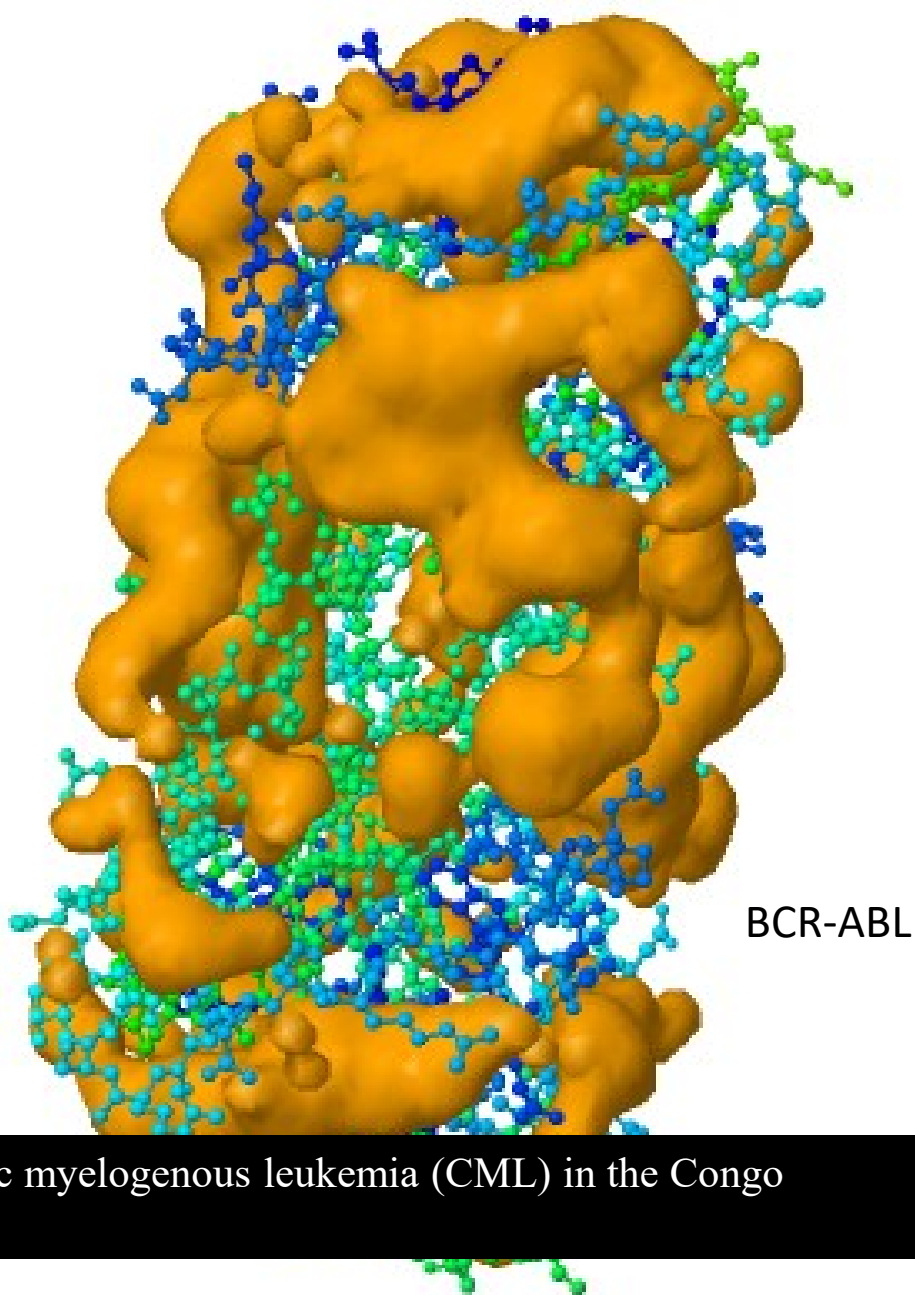


April 2017, Vol 4, No 4

MSD

Medical Science & Discovery



Pattern of chronic myelogenous leukemia (CML) in the Congo

International Journal of
Medical Science and Discovery
Open Access Scientific Journal
ISSN: 2148-6832
Lycia Press LONDON U.K.
www.medscidiscovery.com

Medical Science and Discovery (<http://www.medscidiscovery.com>) is an international open access, peer-reviewed scientific research journal that provides rapid publication of articles in all disciplines of human health, clinical and basic medical science such as Biophysics, Biochemistry, Histology, Physiology, Genetics, Pathology, Toxicology, Anatomical Sciences, Pharmacology, Embryology, Internal and Surgical Medicine.

The policy of top priority of MSD is to put forward and highlight medical innovations and inspiring patents.

MSD offers an exceptionally fast publication schedule including prompt peer-review by the experts in the field and immediate publication upon acceptance. The editorial board aims at reviewing the submitted articles as fast as possible and promptly including them in the forthcoming issues.

This journal is published under ethical publishing policy of international scientific Bioethics and publication rules.

MSD supports the Open Access Initiative. Abstracts and full texts (HTML and PDF format) of all articles published by MSD are freely accessible to everyone immediately upon publication.

Medical Science and Discovery has scientific affiliation with Lycia Clinics London UK

Indexed Databases: NLM Catalog, Chemical Abstracts (CAS), Index Copernicus, Open Air, ULRICHS Database, Proquest, Advanced Science Index, Turkish Citation Index, Tubitak Ulakbim, Research Bible, Scholar Google

Medical Science and Discovery is an international open access, peer-reviewed scientific research journal.

ISSN: 2148-6832 (Print) E-ISSN: 2148-6832 (Online)

Category: Multi Disciplinary Health Science Journal

Abbreviated key title: Med. Sci. Discov.

Frequency: Monthly

Review System: Double Blind Peer Review

Circulation: Globally, Online, Printed

Article Processing Charge (APC): US\$ 100

Licensing: CC-BY-NC 4.0 International License Environmental

Editor-in-Chief: Assoc. Prof. Dr. Dr. Ahmad Rajabzadeh, Anatomical Department of Lorestan, University of Medical Sciences, Tabriz, Iran

Established: 30.04.2014

Web address: www.medscidiscovery.com; <http://dergipark.ulakbim.gov.tr/msd>

E-mail : [editor \[at\] medscidiscovery.com](mailto:editor[at]medscidiscovery.com)

Phone : +44 020 3289 9294

Design and preparation of PDFs, Language editing, Web site design, Graphical design Services of international Journal of Medical Science and Discovery has been contracted with Lycia Press LONDON, UK (as Publisher), by the MSD Board of Directors

Publisher: Lycia Press Inc.

Address: 3rd Floor 86 - 90 Paul Street, EC2A 4NE, London, UK

Web address: www.lycians.com

Phone : +44 020 3289 9294

E-mail : [office \[at\] lycians.com](mailto:office[at]lycians.com)

E-mail : [info \[at\] lycians.com](mailto:info[at]lycians.com)

Editorial Board of Medical Science and Discovery

Honorary Editors

Prof. Dr.	Aziz Sancar	UNC, Faculty of Medicine, Dept. of Biochemistry-Biophysics, Chapel Hill, NC, USA
Prof. Dr.	Giancarlo BAROLAT	Barolat Institute, 1721 E 19th Ave #434, Denver, CO 80218, USA
Prof. Dr.	Joyce REARDON	UNC, Faculty of Medicine, Dept. of Biochemistry-Biophysics, Chapel Hill, NC, USA
Prof. Dr.	Metin TULGAR	Yuzuncu Yil University, School of Medicine, Dept. of Biophysics, Van, TR

Deputy Editors

Assoc. Prof.	Michael George KEMP	UNC, 120 Mason Farm Road, Campus Box 7260, Genetic Medicine Bldg Room 3010 Chapel Hill, NC 27599 USA
Assoc. Prof.	Zafer Akan (Founder)	Lycia Press Inc., 3rd Floor 86 - 90 Paul Street, EC2A 4NE, London, UK

Internal Medicine

Asist. Prof. Dr.	Ahmet YILMAZ	Dicle University, Faculty of Medicine, Dept. of Family Medicine
Prof. Dr.	Ali Rıza BILGE	CBU, Faculty of Medicine, Dept. of cardiology, Manisa, TR
Assoc. Prof. Dr.	Alparslan SAHİN	Dicle University, Faculty of Medicine, Dept. of Eye
Prof. Dr.	Ayşe YÜKSEL	Arel University, Faculty of Medicine, Dept. of Public Health, Istanbul
Assoc. Prof. Dr.	Bekir Serhat YILDIZ	PAU, Faculty of Medicine, Dept. of Cardiology, Denizli, Turkey
Prof. Dr.	Hatice Sınav USLU	ISMU, Faculty of Medicine, Dept. of Nucleer Medicine, Istanbul, TR
Prof. Dr.	Hikmet YILMAZ	CBU, Faculty of Medicine, Dept. of Neurology, Manisa, TR
Prof. Dr.	Hulya Ozdemir	YYU Faculty of Medicine, Dept. of Pharmacology, Van
Assoc. Prof. Dr.	Huseyin GUDUCUOGLU	YYU Faculty of Medicine, Dept. of Microbiology, Van
Asist. Prof. Dr.	Murat ÖZSARAÇ	CBU, Faculty of Medicine, Dept. of Emergency Medicine
Prof. Dr.	Muzaffer POLAT	CBU, Faculty of Medicine, Dept. of Pediatric Neurology
Assist. Prof. Dr.	Nesrin CEYLAN	Ankara Children's Health, Training and Research Hospital, Department of Hematology Oncology , Ankara, Turkey
Prof. Dr.	Nobuo INOTSUME	Hokkaido Pharmaceutical University, Clinical Pharmacology, Hokkaido AC, JAPAN
Assist Prof. Dr.	Secil ILHAN YILMAZ	Erciyes University, Genom and Stem Cell Research Center, Kayseri, TR
Prof. Dr.	Talat ECEMIS	CBU, Faculty of Medicine, Dept. of Microbiology, Manisa, TR

Surgical Medicine

Assoc. Prof. Dr.	Abdullah BOYUK	Dicle University, Faculty of Medicine, Dept. of General Surgery
Assist. Prof. Dr.	Christopher Schmitt	University of California, San Francisco Cardiovascular Res. Inst.
Prof. Dr.	Çetin DİNÇEL	Hacettepe University, Faculty of Medicine, Dept. of Urology
Prof. Dr.	Cuneyt Temiz	CBU, Faculty of Medicine, Dept. of Neurosurgery, Manisa
Prof. Dr.	Gönül Tezcan KELEŞ	CBU, Faculty of Medicine, Dept. of Anesthesiology and Rean.
Prof. Dr.	M. Derya BALBAY	Memorial Hospital, Dept. of Urooncology
Assoc. Prof. Dr.	Mustafa USLU	Duzce University, Faculty of Medicine, Dept. of Orthopedics, Bolu
Asist. Prof. Dr.	Murat YILDIR	BAU Faculty of Medicine, Dept. of General Surgery
Prof. Dr.	Nasuhi Engin AYDIN	Katip Çelebi University, Faculty of Medicine, Dept. of Pathology
Assist. Prof. Dr.	Pinar SOLMAZ HASDEMİR	CBU, Faculty of Medicine, Dept. of Obstetrics and Gynecology, Manisa
Assoc. Prof. Dr.	Tevfik GUNES	PAU, Faculty of Medicine, Dept. of Cardiovascular Surgery, Denizli,
Assoc. Prof. Dr.	Yusuf Izzettin ALIHANOGLU	PAU, Faculty of Medicine, Dept. of Cardiology, Denizli

Editorial Board of Medical Science and Discovery

Basic Sciences

Dr.	Alper Tunga ÖZDEMİR	Manisa ME State Hospital Dept. of Medical Biochemistry
Prof. Dr.	Alev Meltem ERCAN	Istanbul University, Cerrahpasa Medical Faculty, Dept. of Biophysics, Istanbul
Assoc. Prof. Dr.	Anzel BAHADIR	Duzce University, Faculty of Medicine, Dept. of Biophysics, Bolu, TR
Assoc. Prof. Dr.	Ayşe Inhan GARIP	Marmara University, Faculty of Medicine, Dept. of Biophysics
Assoc. Prof. Dr.	Bahriye SİRAN	Gazi University, Faculty of Medicine, Dept. of Biophysics
Prof. Dr.	Beki KAN	Acibadem University, Faculty of Medicine, Dept. of Biophysics
Prof. Dr.	Cevval ULMAN	CBU, Faculty of Medicine, Dept. of Biochemistry, Manisa, TR
Assoc. Prof. Dr.	Gokhan OTO	YYU Faculty of Medicine, Dept. of Pharmacology, Van, TR
Prof. Dr.	Halit DEMİR	YYU Faculty of Science, Dept. of Biochemistry
Prof. Dr.	Hasan YILMAZ	YYU Faculty of Science, Dept. of Parasitology, Van, TR
Prof. Dr.	M. Ali KOPINAR	Istanbul University, Cerrahpasa Medical Faculty, Dept. of Biophysics, Istanbul
Prof. Dr.	Mustafa ÖZBEK	CBU, Faculty of Medicine, Dept. of Physiology
Prof. Dr.	Nobuo Inotsume	Hokkaido Pharmaceutical Univ., Clinical Pharmacology, Hokkaido AC, JAPAN
Asist. Prof. Dr.	Özdemirhan Serçin	Interdisciplinary Research Institute, Université Libre de Bruxelles, Belgium
Prof. Dr.	Seda VATANSEVER	CBU, Faculty of Medicine, Dept. of Histology and Embryology
Prof. Dr.	Sevinç İNAN	CBU, Faculty of Medicine, Dept. of Histology and Embryology
Asist. Prof. Dr.	Shoban GADDAMADI	Washington State University College of Pharmacy, Dept. of Experimental and Systems Pharmacology, Spokane, WA, USA
Asist. Prof. Dr.	Tahir ÇAKIR	YYU Faculty of Medicine, Dept. of Nuclear Medicine Van, TR
Assoc. Prof. Dr.	Tamer ZEREN	CBU, Faculty of Medicine, Dept. of Biophysics
Prof. Dr.	Tunaya KALKAN	Istanbul University, Cerrahpasa Medical Faculty, Dept. of Biophysics, Istanbul
Assist Prof. Dr.	Younes El Bouzekri EL IDRISSE	Place Aboubakr, Imm 22, App 6, Bd Fal ould oumeir, Agdal Rabat
Assist Prof. Dr.	Yusuf Kemal DEMİR	Marmara University, Faculty of Pharmacy, Dept. of Pharmaceutical Tech. Istanbul TR

Statistical Editor

Prof. Dr.	Siddık KESKİN	YYU Faculty of Medicine, Dept. of Medical Statistics, Van, TR
-----------	---------------	---

Language Editor

Asist. Prof. Dr.	Hakan ERGİN	Istanbul University, Dept. of Foreign Languages, Istanbul, TR
------------------	-------------	---

Editorial Office

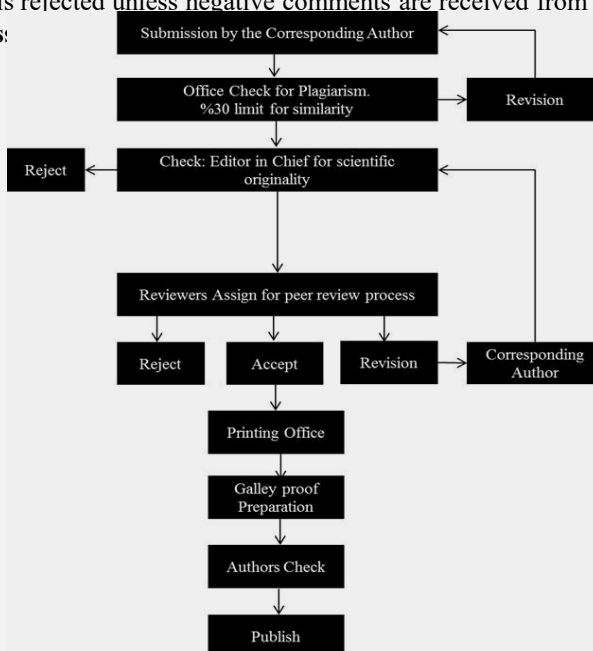
General Coordinator	Elena JALBA	Office Lycia Press, London, UK
Typist-Compositor	Gonul OZGOK	Office Lycia Press, London, UK
Typist-Compositor	Bugra YOLDAS	Office Lycia Press, London, UK

Instruction for Authors

- **Important**
- MSD is committed to deterring plagiarism, including self-plagiarism. Your manuscript will screen to compare for similarity with published articles.
- For research studies using human or animal subjects, the trial's design, conduct and reporting of results must conform to Good Clinical Practice guidelines (such as the Good Clinical Practice in Food and Drug Administration (FDA)-Regulated Clinical Trials (USA) or the Medical Research Council Guidelines for Good Clinical Practice in Clinical Trials (UK)) and/or to the World Medical Association (WMA) Declaration of Helsinki
- Dear Authors, please upload just these three files to the manuscript submission system
- [Title Page Sample](#)
- [Manuscript Sample](#)
- [Copyright Transfer and Author Consent Form](#)
- Please select Keywords from the MESH source
- (<https://www.nlm.nih.gov/mesh/MBrowser.html>)
- Manuscripts should be prepared in accordance with the "Uniform Requirements for Manuscripts Submission to Biomedical Journals" proclaimed by the International Committee of Medical Journal Editors (www.icmje.org).
- MSD uses Vancouver reference style, please prepare articles due to Vancouver reference style rules.
- **Manuscript Preparation Rules**
- **1. Cover letter**
- **a-** A statement that the manuscript has been read and approved by all the authors.
- **b-** That the requirements for authorship have been met for all the authors, based on the criteria stated by *ICMJE*.
- **c-** Approval of all the authors regarding the order in which their names have appeared.
- **d-** That each author confirms the manuscript represents honest work.
- **e-** The name, address, and telephone number of the corresponding author who is responsible for communicating with other authors about revisions and final approval.
- **f-** The letter should give any additional information that may be helpful to the editor, such as the type or format of the article. If the manuscript has been submitted previously to another journal or in another language, it is helpful to include the previous editor's and reviewers' comments with the submitted manuscript, along with the authors' responses to those comments. Submitting previous evaluatory review of another journal accelerates the review process.
- **g-** For accepted manuscripts, the authors are requested to fill and sign the journal's cover letter to express their consent for its publication.
- **h-** To reproduce published material, to use illustrations or tables or report information about identifiable people, the author should submit a copy of the permission with the manuscript to the journal.
- **2. Top Ethic Committee Approval**
Inclusion of the approval letter from the relevant Ethics Committee or Institution's Review Board regarding the research protocol and the rights of the subjects (if applicable to the study)
- **3. Top Consent Form**
Attach a copy of the consent form to the letter, if applicable. Consent forms would be evaluated by the Ethics Committee and then signed by the participant.
- **4. Top RCT or NCT Registration**
Emailing the letter denoting registration of RCTs or NCTs in domestic or international databases (The trial's registration number needs to be mentioned, too).
- 5. Manuscripts submitted in English, must be type written, double-spaced, on good quality A4 paper, or paper of similar format. Authors are requested to reserve margins of at least 2.5cm all around the paper. Original drawings of photos, tables and figures should be furnished together with the manuscripts.
- 6. Manuscripts should be kept to a minimum length and should be subdivided into labeled sections (Title page, Abstract, Keywords, Introduction, Materials and Methods, Results, Discussion, Conclusion, Acknowledgement, and References).
- 7. A title page is to be provided and should include the title of the article, authors' names with full first name (with degrees), authors' affiliation, suggested running title and corresponding author. The affiliation should comprise the department, institution (usually university or company), city and state (or nation). The suggested running title should be less than 50 characters (including spaces) and should comprise the article title or an abbreviated version thereof. For office purposes, the title page should include the name and complete mailing address, telephone and fax number, and email of the one author designated to review proofs.
- 8. An abstract no longer than 250 words for reviews and research articles is to be provided as the second page. Abstract should be structured as objective(s) (including purpose setting), materials and methods, results, and conclusion.

Instruction for Authors

- **Case Report**
- A case report is a case study, case report, or other description of a case that should contain 1500 - 2000 words with a structured abstract of 200 words maximum. Case reports should comprise sections of Introduction, Case Presentation, and Conclusions in Abstract and Introduction, Case Presentation, and Discussion in full text with not more than 2 tables or figures and up to 20 references.
- **Brief Report**
- Brief Reports should contain 1000 - 2000 words with a structured abstract of 200 words maximum. Short reports should comprise sections of Background, Objectives, Materials & Methods, Results and Discussion with not more than 2 tables or figures and up to 20 references.
- **Short Communication**
- Short Communication, follow the instructions for original articles, except that the total word number of the main text (excluding references, tables and figure legends) is limited to 2000 with no more than 2 figures and/or tables and no more than 15 references. An abstract, not exceeding 150 words, should be presented at the beginning of the article.
- **News**
- News should contain 1000 - 2000 words with a structured abstract of 200 words maximum. News should comprise sections of Background, Objectives, Materials & Methods, Results and Discussion with not more than 2 tables or figures and up to 20 references.
- **Publication Policies**
- Manuscripts, or the essence of their content, must be previously unpublished and should not be under simultaneous consideration by another Journal. The authors should also declare if any similar work has been submitted to or published by another Journal. By virtue of the submitted manuscript, the corresponding author acknowledges that all the co-authors have seen and approved the final version of the manuscript. The corresponding author should provide all co-authors with information regarding the manuscript, and obtain their approval before submitting any revisions. Manuscripts are only accepted for publication on the understanding that the authors will permit editorial amendments, though proofs will always be submitted to the corresponding author before being sent finally to press. Prior to the initial submission of a new manuscript, please carefully consider that all authors' names are included as no change to authors' details will be permitted after the acceptance. The decision to accept a contribution rests with the Editorial Board of the MSD.
- Manuscripts will be considered for publication in the form of original articles, Case report, short communications, Letter to editor and review articles. The work should be original or a thorough by an authoritative person in a pertinent field.
- **Peer review process**
- All submissions will be reviewed anonymously by at least two independent referees. All manuscripts will be acknowledged upon presenting to the Journal office, provided that all stated requirements are met. Authors are encouraged to suggest names of three expert reviewers, but selection remains a prerogative of the Editor. The whole review process depends on receiving referees comments and revising the manuscripts based on these comments to the author. On receipt of the revised article from the author, and after final approving by referees, the letter of acceptance is issued to the author. Authors have the right to communicate to the editor if they do not wish their manuscript to be reviewed by a particular reviewer because of potential conflicts of interest. No article is rejected unless negative comments are received from at least two reviewers. **MSD employs double blind reviewing process:**



ous throughout the process.

Instruction for Authors

- **Ethical Rules and Rights**
- **Conflicts of interest**
- Conflicts of interest arise when authors, reviewers, or editors have interests that are not fully apparent and that may influence their judgments on what is published. They have been described as those which, when revealed later, would make a reasonable reader feel misled or deceived. (The Committee on Publication Ethics (COPE) states in its Guidelines on Good Publication Practice 2003).
- Authors should disclose, at the time of submission, information on financial conflicts of interest or other interests that may influence the manuscript. Authors should declare sources of funding for the work undertaken.
- **The Journal's Policy on Plagiarism**
- Any practice of plagiarism will not be tolerated by the journal regarding submitted manuscripts. Non-identifiable quoted segments of articles or close paraphrases from other author/s or even submitting the author's previously published work are known as the act of plagiarism by this journal unless proper use of quotations or paraphrasing with decent citation or referencing are in place. Heavy use of one or a couple of articles is discouraged, even if paraphrased fully. Advertent practice of plagiarism will abort reviewing process or later submission to this journal. All submitted articles will evaluate by *iThenticate* software belonged to cross check for stop any plagiarism and improve publication quality.
- **Statement of Human and Animal Rights**
- All submitted articles involving human experiments should be performed only in accordance with the ethical standards provided by the responsible committee of the institution and in accordance with the Declaration of Helsinki (as revised in Edinburgh 2000), available at <http://www.wma.net/en/30publications/10policies/b3/index.html>. Papers describing animal experiments can be accepted for publication only if the experiment conforms the National Institute of Health Guide (National Institute of Health Publications No. 80-23, Revised 1978) for the care and use of Laboratory Animals for experimental procedure. Authors must provide a full description of their anesthetics and surgical procedures. All manuscripts reporting the results of experimental investigations involving human subjects should include a statement confirming the informed consent was obtained from each subject or subject's guardian.
- **Humans:** When reporting experiments on human subjects, authors should indicate whether the procedures followed were in accordance with the ethical standards of the responsible committee on human experimentation (institutional and national) and with the Helsinki Declaration of 1975, as revised in 2008 (5). If doubt exists whether the research was conducted in accordance with the Helsinki Declaration, the authors must explain the rationale for their approach and demonstrate that the institutional review body explicitly approved the doubtful aspects of the study.
- **Animals:** When reporting experiments on animals, authors should indicate whether the institutional and national guide for the care and use of laboratory animals was followed.
- All animal or human subjects should be used after approval of the experimental protocol by a local ethics committee.
- **Acknowledgements**
- Contributors: In acknowledgement section, name people for their contributions or their permission to reproduce their published material, to use their illustrations or provide information about them- try to fully name people who have helped from the conception of the idea to adoption of the hypothesis, to finalization of the study, etc., earnestly. Statement of financial support: Aside from the title page, state any financial or other relationships that might lead to a conflict of interest.
- **Copyright**
- After acceptance and publication; all ownership rights and Copyrights of the manuscript, passes to international journal of Medical Science and Discovery. Please complete copyright form and send via email to editor. [Download MSD Copyright Transfer and Author Consent Form](#)
- This work is licensed under a [Creative Commons Attribution-NonCommercial 4.0 International License](#).
- Copyright 2014: The Author(s); This is an open-access article distributed under the terms of the Creative Commons Attribution License (<http://creativecommons.org/licenses/by/4.0>), which permits unrestricted use, distribution, and reproduction in any medium, provided the original work is properly cited. All Rights reserved by international journal of Medical Science and Discovery.
- **Disposal of material**
- Once published, all draft copies of the manuscript, correspondence and artwork will be held at least for 6 months before disposal. Authors and Readers may find original PDF file of article on backup servers such as CLOKKS (<https://www.clockss.org/>)
- **Digital Object Identifier DOI**
- Once a manuscript is accepted for publication it will be provided with a registered DOI number following the acceptance decision. Manuscripts accepted for publication by the **MSD** will be published as ahead of print articles prior to the printing date of their scheduled issue. Corresponding author will be provided with a PDF Proof by the publisher once the production process of an accepted manuscript is over.

Instruction for Authors

- **Article Processing Charge**
- MSD is a non-profit Scientific Journal Platform; however, it uses professional services such as Language Editing, DOI, domain and hosting, iThenticate Plagiarism or similarity Detection Software. All of these professional services are used for all the article processes and an inevitable cost arises with this.
- Unfortunately, like most open journals, fees of the publication with MSD are charged to Authors. Payment is under the responsibilities of corresponding Author(s). MSD does not charge any fee during the submission period. However, after the peer-review process, a non-refundable charge (100 USD) for each accepted manuscript must be paid by the author(s) via MSD's official PayPal account. An invoice will be sent for each accepted manuscript to corresponding author(s).
- **Following with completion of payment procedure, the galley proof and acceptance letter of article will be send to authors for last check**
- Preparation of articles in PDF and HTML format is covered by Lycia Press Inc. (press.lycians.com) and Article Processing Charges paid to Lycia Press Inc. (press.lycians.com)
- **MSD revenue sources and Sponsorships**
- All costs arising from the publications are covered by the Sponsor Companies and Article Processing Charges. Sponsorship request evaluates by the MSD Journal Management Board and the **sponsor company logos** will be included on the back page of printed magazine and in the sponsor section of journal website

	Article Processing Charge (APC)	Discount %
Regular	100 USD	
for Editorial Board Members	70 USD	30%
for Affiliated Institution Members	80 USD	20%

- *APC not includes Proofreading Services fee. Editor in Chief may direct the corresponding Author to Lycia Press, Language Office for Proofreading Service www.lycians.com
-
- **References**
- Committee on Publication Ethics (COPE). (2011, March 7). Code of Conduct and Best-Practice Guidelines for Journal Editors. Retrieved from http://publicationethics.org/files/Code_of_conduct_for_journal_editors_Mar11.pdf
- World Association of Medical Editors (WAME). Principles of Transparency and Best Practice in Scholarly Publishing. <http://www.wame.org/about/principles-of-transparency-and-best-practice>

Contents

Original Article

Pattern of chronic myelogenous leukemia in the Congo

30-4

Lydie Ocini Ngolet, Malanda Felix, Alexis Elira Dokekias

Pattern of chronic myelogenous leukemia in the Congo

Lydie Ocini Ngolet^{1*}, Malanda Felix², Alexis Elira Dokekias¹

Abstract

Objective: Chronic myeloid leukemia is a clonal myelo proliferative disorder caused by reciprocal translocation t(9;22) that induces tyrosin kinase protein. Imatinib is a selective inhibitor of this protein. Aim of this study is to describe, the clinical and biological feature of chronic myeloid leukemia in the Congo.

Material and Methods: The study is a retrospective study which conducted in Clinical Hematology unit of teaching hospital in Brazzaville, Congo on newly diagnosed patients with chronic myeloid leukemia. A total of 25 males and 14 females with a mean age of 36 years (16 and 69 years) at time of the diagnosis were enrolled in the study.

Results: The mean duration of the illness at the time of the diagnosis was 11.4 months (0.5 and 50 months). Patients presented with a splenomegaly, mean leukocytosis rate at 168.5 g/l (14.6-381 g/l), moderate anemia at 8.4g/dL (3.1 and 12.8 g/dl) and normal platelet rate at 415.4 g/dl (164 and 998 g/l). Thirty eight on thirty nine patients (97.43%) presented at chronic phase and the Sokal score was high in 46.2%. Imatinib induced complete hematologic response at 3 months in all patients. Complete cytogenetic response was achieved in 20.51%. The median follow up period was months. The Overall Survival was 86.6% at 26 months and Progression Free Survival was 91.8% at 12 months.

Conclusion: This meta analysis report represents the clinical and biological pattern of chronic myeloid leukemia in the Congo.

Key words: chronic myeloid leukemia, pattern, Congo

Introduction

Chronic myelogenous leukemia (CML) is a malignant clonal alteration of the pluripotent hematopoietic stem cell. It is a triphasic disease with a chronic phase (CP) that lasts three to six years, followed by transformation to an accelerated and then a blastic phase, of short durations (1). Biologic basis has been elucidated. The characteristic abnormality of the CML is the Philadelphia chromosome (Ph⁺) that results from a reciprocal chromosomal translocation between chromosome 9 and chromosome 22 (2). The genetic consequence of this translocation is a genetic sequence fusion that forms the BCR-ABL oncogene, which encodes for a constitutively active Bcr-ABL kinase that mediates cellular transformation (3). CML has an annual worldwide incidence of 1/100.000 with a male:female ration of 1.5:1 (4). CML is in the Congo the most frequent chronic leukemia with an incidence of 2.2/ 100.000 (5). The advent of imatinib at no cost in the Congo through North-south partnership has decreased the mortality rate related to CML and increased patients' overall survival (6). The aim of this report is to describe the clinical and biological pattern of CML in the Congo.

Patients and Methods

The descriptive retrospective study took place in the Hematology Unit at the teaching hospital, the largest hospital in the country, from January 2008 to December 2015 (8 years). The diagnosis of CML was established by using cytogenetic studies. Cytogenetic studies were performed in the Cytogenetic Laboratory in Kremlin Bicêtre Teaching Hospital (France). The technique performed was chromosome banding analysis of at least 20 bone marrow cell metaphases, after short-term and long-term culture with standard G or G banding techniques.

Inclusion criteria:

- Newly diagnosed Phi + CML
- Complete medical record

Non inclusion criteria:

- CML not confirmed by cytogenetic analysis
- Incomplete medical record

Cytogenetic and hematologic responses:

Patients were enrolled in the Glivec Initiative Program Assistant Program (GIPAP) and were granted oral IM at the dosage of 400 mg daily. The hematologic and

Received 16-04-2017 Accepted 26-04-2017 Available Online 30-04-2017

¹ Clinical Hematology Unit, Teaching Hospital of Brazzaville, BP 32, Republic of Congo

² Laboratory of Hematology, Teaching Hospital of Brazzaville, BP 32, Republic of Congo

* Corresponding Author: Lydie Ocini Ngolet E-mail: lingolet@yahoo.fr Phone: + 242 05 511 9860



cytogenetic responses to IM were analyzed with regard to the European Leukemia Net Guidelines and U.S National Comprehensive Cancer Network (NCCN) Guidelines.

Hematological response (HR) indicates improvement in peripheral blood cell counts. It may be complete [CHR (White blood cell count below $10 \times 10^9 / l$, platelets below $450 \times 10^9 / l$, immature cells absent or normalized differential, no signs or symptoms of disease)] or partial (persistence of immature cells , platelets below 50% of pre-treatment levels but above $(450 \times 10^9 / l)$).

A Cytogenetic Response (CYR) defines the proportion of Ph+ cells identified in bone marrow or peripheral blood. CYR may be complete (CCYR): complete absence of Ph+ cells, partial (PCYR) 1-35% Ph cells, minor (36 – 65 % Ph+ cells), or minimal 66-95% Ph cells. A Major CYR (MCYR) is defined as CCRYR or PCYR. Loss of CYR is considered when an increase in Ph+ metaphases is observed.

Statistical analysis: Descriptive statistic was used to analyze the mean, median, incidence and percentage .Kaplan-Meyer survival analysis was applied to determine the Progression-Free Survival (PFS) and Overall Survival (OS). PFS was calculated as the time elapsed between IM initiation and progression of the CML.OS was calculated the initiation of IM to death due to any cause.

Results

1. Socio-demographic characteristics

Thirty nine patients were admitted for CML in the hematology department of the Teaching Hospital. They were 25 male (64.10 %) and 14 were female (35.90%) with a median age at the time of diagnosis of 36 years (range 16-69 years).

2. Clinical and biological characteristics of patients with chronic myeloid leukemia

The median duration of symptoms (time between beginning of the symptoms and admission at the department of hematology) was 11.4 months (range 0.5 and 50 months). The main complain at presentation was abdominal pain (51.28%). The health performance status of the patient was assessed by the ECOG status (Eastern Cooperative Oncology Group). It was a grade 1 for 20 patients (51.3%) at the time of presentation. Cells blood counts of patients showed high white cells count with an average of 168.5 giga/l (range 14.6 and 381), low hemoglobin rate at 8.4 g/dl (range 3.1 and 12.8) and mean platelet rate at 415.4 g/l (146 and 998 G/L) . The prognostic score for survival of CML patients (Sokal score) was high for 18 patients (46.2%). Thirty eight (97.43%) on 39 patients presented at chronic phase. The median for follow-up time was 28 months (Table 1).

Table 1: Patient Characteristics

Variable	N
Time since diagnosis in month	
Median (range)	11.4 (0.5-50)
Main complaint; N (%)	
Abdominal pain	20(51.28)
Fatigue	7(17.95)
Headaches	2 (5.13)
weakness	1(2.56)
No symptoms	9(23.08)
ECOG score: N (%)	
0	19 (48.72)
1	20 (51.28)
Median spleen size in cm (range)	16.4 (0-28)
Median hepatomegaly size in cm (range)	6.1 (0-19)
Median Hb rate in g/dl (range)	8.4 (3.1-12.8)
Median white cell count in giga/l (range)	168.5 (14.6-381)
Median platelet count in giga/l (range)	415.4 (146-998)
Median Follow up in month (range)	28 (5-68)
SOKAL score	
Low n (%)	7 (17.9)
Intermediate n (%)	14 (35.9)
High n (%)	18 (46.2)
Chronic phase	38 (97.43)
Accelerated phase	1(2.57)

Hematological response

All patients achieved CHR in 3 months. Two patients (5.13%) lost their CHR at 6 months while receiving Imatinib. At 1 year, 27 patients (89.87%) continued to have a CHR (Table 2).

Cytogenetic response

At 6 months after the initiation of IM, 21 patients (88.18%) achieved a Major Cytogenetic Response (MCYR). The response was complete (CCYR) in 20.51% and partial (PCYR) in 66.67% (Table 3)

Outcomes

After a median follow up of 28 months (range: 5 and 68 months), 6 patients (15.4%) deceased, 1 was lost of follow (2.6%) and 32 (82.1%) were alive.

The projected 26 month Overall Survival rate (OS) was 86.6% (95% CI: 34-71%).The rate was 43% at 53 months (Figure 1).

8 of the 39 patients had progressed to the accelerated or blastic phase. The estimated rate of Progression-Free Survival (PFS) was 91.8% (95%CI: 14-57%) at 12 months and 43.6% at 36 months (Figure 2).

Table 2: Hematologic response

Hematologic remission	3 months	6 months	12 months	24 months
Total patient	39	39	39	33
Complete	39 (100%)	37 (94.87%)	35(89.74%)	27(81.82%)
Partial	0	2 (5.13%)	4(10.26%)	6(18.18%)

Table 3: Cytogenetic response

Variable	N (%)
Complete n (%)	8(20.51)
Partial n (%)	26 (66.67)
Minor n (%)	4(10.26)
No response n (%)	1(2.56)
Total	39(100)

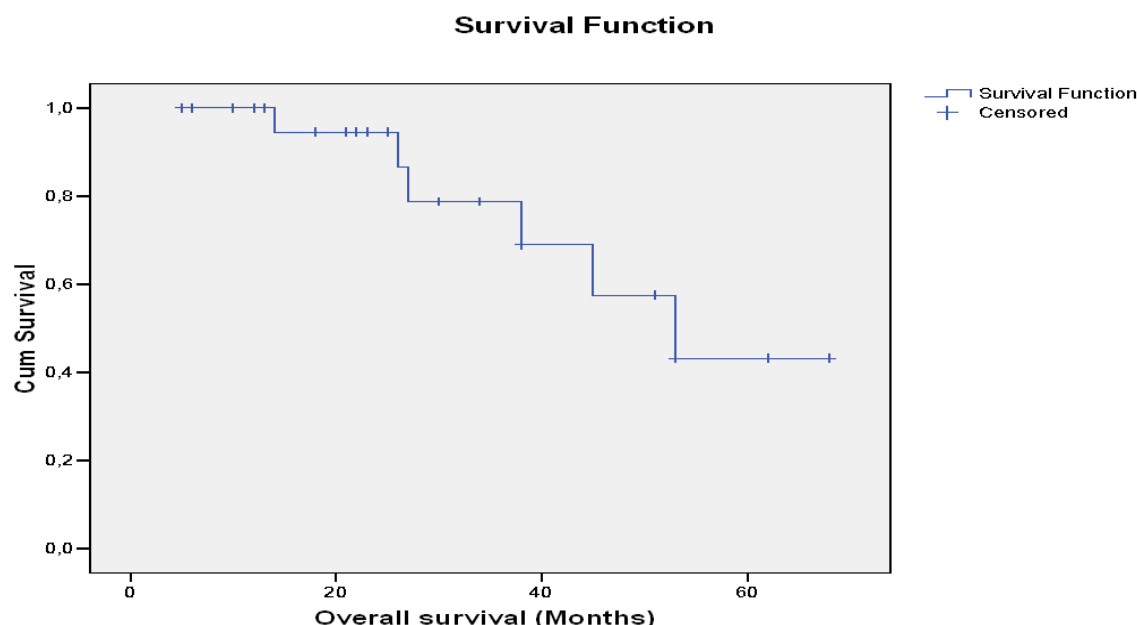


Figure 1: Landmark analysis of overall survival.

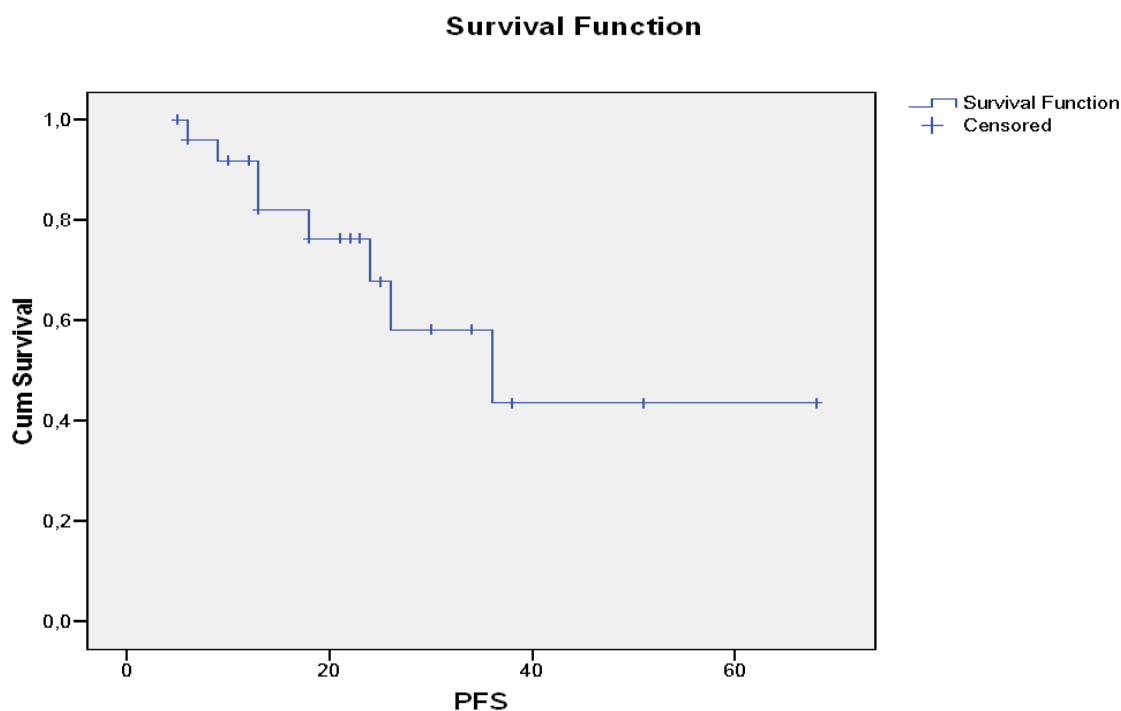


Figure 2: Landmark analysis of the Progression Free Survival

Discussion

This study aims to report clinical and biological feature of Congolese patients with chronic myeloid leukemia and complement previous studies in the African region (7-10). CML in low and middle resources countries shares some clinical and biological pattern that contrast with the one from western countries. CML affects younger population in low and middle resources countries (7-11). The median age at the presentation is a decade even two decades younger compared with the one in the West (6, 11-13). Indeed, the median age of onset goes from 37 to 42 years against the 65 years seen in the US and Europe (11-13). For Fleming and Menendez, this epidemiological distribution is a picture of the demographic distribution and is not relative to any inherent biological characteristics (14).

Because of the long delay diagnosis, 11.4 months our study, patients are symptomatic at the diagnostic and present in medical facilities with common symptoms as abdominal pain related to enlarge spleen (7-10). Splenomegaly is the most common finding followed by a hepatomegaly (7-10, 15). No organomegaly is noticed in only 5.4% (15). In comparison, the delay diagnosis is short in the West (12,13,16). Consequently, 40% of patients are not symptomatic and diagnosis is made on the basis of abnormal blood count (16). Paradoxically, despite the long delay diagnosis reported, chronic phase is the most common stage of the disease noticed at the time of the presentation but prognosis is bad since 46.2% patients presented with high risk CML at the Sokal score in our series (7-10,15).

The prognosis is better in Western countries since only 28.9% showed a high risk at the Sokal score (12,13,16). The Sokal score evaluates the risk of death by including age, spleen size, platelet count and percentage of blasts circulating. The estimated survival is lower for high Sokal scores (17).

Leukocytosis is major and more pronounced with an average of 211.7 Giga/l in Ivory Coast (8). Anemia is moderate; the lowest hemoglobin has been reported by Segbena in Togo (9).

The hematological response is pretty good and complete hematological response is noticed in an average of 3 months (7-10). However cytogenetic response is not as impressive as reported in the West (12,13,16). Data available in Africa region show poor performance of the imatinib (7-10). Only 20.51% of the patients in our trial achieved a CCYR at 6 months, 17% in Ivory Coast and 51% in Nigeria on patients that had previously interferon (7,8). When we compare with the data in Asia, the cytogenetic response is broadly appreciated and ranges from 30% in India to 90% in Singapour (16).

The poorer performance is attributed on one hand to the inadequate cytogenetic monitoring that bias data (16). On the another hand, diagnosis at late chronic phase and poor initial prognosis are both statistically correlated to poor cytogenetic response (8,17). Finally, additional chromosome abnormalities, 41% in the study of Koffi are associated with imatinib resistance (8).

Nonetheless with the poor prognosis of CML in Africa, we found a comparable impressive projected OS rate of 94.4% and PFS at 91.8% at 12 months versus 96% and 91% in Nigeria (7) for the same duration of time. But, our values changed drastically at 53 months with an OS of 43% and a PFS of 43.6% at 36 months.

Conclusion

Chronic myeloid is the most prevalent chronic malignant blood disorder that affects young adults in Africa that present at late chronic phase with voluminous splenomegaly and major leukocytosis. Imatinib is an option treatment given at no cost to patients. Imatinib increased overall survival of patients, but the cytogenetic response remains lower compared to the West.

Conflict of Interest: The authors declare no potential conflicts of interest with respect to the research, authorship, and/or publication of this article.

Acknowledgements: The authors are grateful GIPAP for providing and facilitating the delivery of Imatinib in the Congo. We are also indebted to the Hematologic Laboratory in the Kremlin Bicêtre teaching hospital in Paris-France for the cytogenetic studies.

Author's Contributions: NLO drafted and the work. MF revised the manuscript, EDA approved the final version of the manuscript. All authors read and approved the final manuscript

Ethical issues: All Authors declare that Originality of research/article etc... and ethical approval of research, and responsibilities of research against local ethics commission are under the Authors responsibilities. The study was conducted due to defined rules by the Local Ethics Commission guidelines and audits.

References

- Sawyers CL. Chronic myeloid leukemia. *N. Engl J Med* 1999; 340: 1330-40.
- Rowmey; "A new consistent chromosomal abnormality in chronic myelogenous leukemia identified by quinacrine fluorescence and Giemsa staining"; *Nature* 1973; 243(243): 290-3.
- Daley GQ, Van Etten RA, Baltimore D, "induction of chronic myelogenous leukemia in mice by the P210 (bcr/abl) gene of the Philadelphia chromosome". *Science* 1990; 247(5444): 824-30.
- Redaelli A, Bell C, Casagrande J, Stephens J, Botteman M, Laskin B et al. Clinical and epidemiologic burden of chronic myelogenous leukemia. *Expert Review of Anticancer Therapy* 2014; 1(4): 85-96.
- Nsonde Malanda J, Nkoua Mbon JB, Tozoulabambara A, Ibara G, Minga B, Nkoua Epala B et al. Douze années de fonctionnement du registre des cancers de Brazzaville. *Bull Cancer*. 2013; 2(100):135-39.
- Druker B, Guilhot F, O'Brien GS, Gathmann I, Kantarjian H, Gattermann N, et al. Five-year follow-up of imatinib therapy for newly diagnosed chronic myelogenous leukemia in chronic-phase shows sustained responses and high overall survival. *N Engl J Med* 2006; 355: 2408-17.
- Muheez AD, Faluyi JO, Oyekunle AA et al. The use of imatinib mesylate in Nigerians with chronic myeloid leukemia. *Cellular Therapy and Transplantation* 2008; 1 (2):58-62.
- Koffi KG, Nanho DC, N'dathz E et al. The effect of imatinib mesylate for newly diagnosed Philadelphia chromosome-positive, chronic-myeloid leukemia in Sub-Saharan African patients: the experience of Côte d'Ivoire. *Advances in hematology* 2010; 10 (268921): 1-6.
- Segbena AY, Kueviakoe IMD, Agbetiafa K, Padaro E, ayibo Y, Dorkenoo A, Agbo YM. Leucémie myéloïde chronique et imatinib, expérience du CHU Campus de Lomé au Togo. *Médecine Santé et Tropicales* 2012 ; 22(3) : 307-11.
- Chemegni B, Tayou Tagne C, Nlend Nlend MC, Ngouadjeu E, Ngo Sack f, Kaptue Noche L et, al. La réponse hématologique chez les patients atteints de leucémie myéloïde chronique sous imatinib à Yaoundé. *Health Sci. Dis* 2016 ; 17(1) : 1-6.
- Mendizabal AM, Naji Y, Levine PH. Geographic and income variation in age at diagnosis and incidence of chronic myeloid leukemia. *International of Hematology* 2016; 103(1): 70-8.
- De Lavallade H, Khorashad JFA, Milokovic D et al. Imatinib and newly diagnosed patients with chronic myeloid leukemia: incidence on sustained responses in an intention-to-treat analysis. *Journal of Clinical Oncology* 2008; 26 (20): 3358-63.
- Kantarjian HM, Smith TL, McCredie KB et al. Chronic Myelogenous Leukemia: Multivariate Analysis of the Association of Patients Characteristics and Therapy with survival. *Blood* 1985; 66 (6): 1326-35.
- Fleming AF and Menendez C. "blood", in principles of Medicine in Africa, Parry E, Godfrey R, Mabey D, and G. Gill, Eds., vol. 78, Cambridge University Press, Cambridge UK, 2004.
- Prosanth G and Lalit K. Chronic myeloid leukemia in India. *Journal of Global Oncology* 2017; 3(1): 67-71.
- Wing YA, Caguioa PB, Chuah C, chun Hsu S, Saengsunee J, Dong-Wook K et, al. Chronic myeloid leukemia in Asia. *Int J Hematol* 2009; 89: 14-23.
- Sokal JE. Evaluation of survival data from chronic myelocytic leukemia. *Am J Hematol* 1976; 1 (4): 493-500.



MEDICAL SCIENCE & DISCOVERY



ISSN: 2148-6832

Lycia Press LONDON UK



International Journal of
Medical Science and Discovery
Open Access Scientific Journal
April 2017, Vol.4 No.4
www.medscidiscovery.com



lycians

www.lycians.com