

RESEARCH ARTICLE

The swimming crab *Portunus segnis* (Forskål, 1775): host for the barnacle *Chelonibia patula* (Ranzani, 1818) from the Turkish coast

Tahir Özcan*

Department of Marine Biology, Fisheries Faculty, Mustafa Kemal University, 31200
Iskenderun, Hatay, TURKEY

*Corresponding author: tahozean@yahoo.com

Abstract

During May 2011, the symbiotic barnacles *Chelonibia patula* (Ranzani, 1820) was collected in Iskenderun and Mersin Bays on the Levantine coast of Turkey. Three specimens of the swimming crab *Portunus segnis* (Forskål, 1775) and two specimens of the blue crab *Callinectes sapidus* Rathbun, 1896 infested by *C. patula* were obtained. This is the first record of *C. patula* on the carapace and cheliped of *P. segnis* from the Turkish coasts. Besides, it was also found that within the frame of this study *C. patula* has expanded its distribution range on *C. sapidus* carapace from Iskenderun to Mersin Bay, Levantine coast of Turkey.

Keywords: *Chelonibia patula*, *Portunus segnis*, barnacle, epibiosis, Turkey, Mediterranean Sea.

Introduction

Decapod crustacean species are important in the commercial fisheries of the world. Portunid crabs are economically important decapod crustaceans as human food in the Levantine Sea (Turkish coast), particularly two crabs belonging to the portunid family *Callinectes sapidus* Rathbun, 1896 and *Portunus segnis* (Forskål, 1775) (Özcan 2003). According to TUIK (2010), in 2009 totally 77 tonnes of blue crab *C. sapidus* was caught in the Levantine Sea coast of Turkey, but no catch data was reported for *P. segnis*. Swimming crab *P. segnis* is commercially important at local fish markets in Mersin and Iskenderun Bays where one crab specimen is sold for 0.25 to 0.42 Euro.

P. segnis is distributed in the western Indian Ocean from Pakistan to South Africa, Red Sea and Mediterranean Sea (Lai *et al.* 2010). It is one of the early lessepsian invaders, firstly recorded in the Mediterranean Sea as *Neptunus* (*Portunus*) *pelagicus* from Egypt (Fox 1924 [1898]). Later it was reported from Palestine (Fox 1924); Turkey (Gruvel 1928; Holthuis 1961; Kocataş 1981; Enzenross and Enzenross 1987, 1990; Özcan *et al.* 2005); Syria (Gruvel 1930; Hasan *et al.* 2008); Lebanon (Steinitz 1929); Cyprus (Demetropoulos and Neocleous 1969); Italy, (Ghisotti 1966; Crocetta 2006) and Rhodes Island, Greece (Corsini-Foka *et al.* 2004 [1991]).

Barnacles are sessile, filter-feeding crustaceans that attach to variety of marine substrata, including whales, turtles, crabs and inanimate objects (Pasternak *et al.* 2002). *Chelonibia patula* (Ranzani 1820) is a cosmopolitan species and it was reported host-epizoon for the species. *C. patula* has been known from the western and central Mediterranean Sea, the Levantine Sea and Black Sea (Relini 1980; Koukoura and Matsa 1998; Pasternak *et al.* 2002; Beşir 2010; Bakır *et al.* 2010). *C. patula* has been reported infesting on several crab species such as *P. segnis* [as *Portunus pelagicus* (Linnaeus 1758)] in Israel (Pasternak *et al.* 2002); *P. pelagicus* in Australia (Shields 1992; Gaddes and Sumpton 2004); *Callinectes amnicola* and *Portunus validus* off Lagos Coast, Nigeria (Lawal-Are and Daramola 2010); *Arenaeus cribrarius* (Lamarck 1818) in Ubatubai Brazil (Costa *et al.* 2010) and *C. hellerii* from the Pakistan (Mahjabeen and Mustaqim 1994). According to Farrapeira (2010), *Callinectes bocourti* (Farrapeira 2009); *C. danae* (Farrapeira 2009); *C. exasperatus* (Farrapeira-Assunção 1991; Farrapeira *et al.* 2000) and *C. larvatus* are hosts for *C. patula* along the coast of Brazil.

C. patula barnacle epizooites on the carapace of *P. segnis* which has important commercial value was reported for the first time from the Turkish seas within the frame of this study. At the same time the distribution of *C. patula* on carapace of *C. sapidus* has extended from Iskenderun Bay to Taşucu (Mersin Bay).

Materials and Methods

Samplings were carried out on 12 - 17 May 2011, at two stations. One specimen of the swimming crab and one specimen of the blue crab were collected by commercial trawl in Iskenderun Bay. Two specimens of the swimming crab and one specimen of the blue crab were collected by commercial trawl in Mersin Bay. Sampling coordinates are 36° 40' 830" N 35° 42' 900" E (Iskenderun Bay) and 36° 31' 260" N 35° 13' 422" E (Mersin Bay) (Figure 1). The specimens have been deposited at the Mustafa Kemal University, Faculty of Fisheries Museum, Hatay/Turkey (Collection numbers are for *C. sapidus* MSM-MAX/2011-1. MSM-MAX/2011-2. and for *P. segnis* MSM-MAX/2011-3. MSM-MAX/2011-4).



Figure 1. Sampling locations

Results and Discussion

A total of three specimens of *P. segnis* and two specimens of *C. sapidus* infested by *C. patula* were obtained. Among these, two specimens of *P. segnis* were from Mersin Bay (Figure 2) and one specimen of *P. segnis* was from Iskenderun Bay while one specimen of *C. sapidus* was from Mersin Bay and one specimen of *C. sapidus* was from Iskenderun Bay.

Two specimens of barnacle were found on the cheliped of *P. segnis* [Specimen 1 (Isk. Bay)]. All other barnacle specimens were found on the carapace of *C. sapidus* and *P. segnis*. Some morphometric measurements of the specimens are given in Table 1.

C. patula is a cosmopolitan species and it has wide distribution in the Mediterranean Sea. It was reported for the first time on *C. sapidus* from Iskenderun Bay (Bakır *et al.* 2010) and later reported on *Spondylus gaedoropus* (Mollusca) from Antalya Bay on the Turkish coast (Beşir 2010).

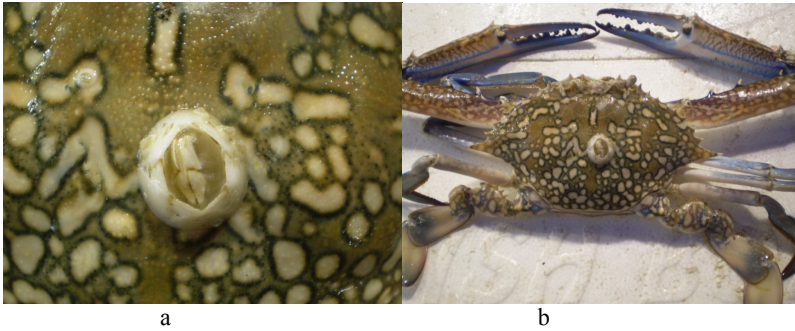


Figure 2. Specimen of *Chelonibia patula* (b) and their host *Portunus segnis* from Mersin Bay (a)

Table 1. Morphometric measurements of *Callinectes sapidus*, *Portunus segnis* and *Chelonibia patula*

	<i>C.sapidus</i>			<i>C.patula</i>		<i>P.segnis</i>		<i>C.patula</i>		
	CW (mm)	W (g)	N	Max Ø	Min Ø	CW (mm)	W (g)	N	Max Ø	Min Ø
Specimen 1 (Isk. Bay)	120.2	89.4	2	9.1	1.2	110.2	79.9	18	2.9	1.5
Specimen 2 (Mer. Bay)	98.4	80.1	1	1.6	-	127.1	92.8	3	8.6	1.7
Specimen 3 (Mer. Bay)	-	-	-	-	-	75.1	59.2	2	3.1	1.7

CW: carapace width in cm; W: weight of crab; N: number of *C. patula* on a crab; Max.: maximum; Min.: minimum; Ø: basal diameter of *C. patula* specimens in mm.

Generally *C. patula* fouling the carapace crabs (Ross and Jackson 1972; Key *et al.* 1997; Pasternak *et al.* 2002; Bakır *et al.* 2010). Several study reported this species on carapace, chelipeds and also walking legs of crabs, such as *C. hellerii* from Pakistan (Mahjabeen and Mustaqium 1994), and *Callinectes amnicola* and *Portunus validus* off Lagos Coast, Nigeria (Lawal-Are and Daramola 2010). The main epibiont of the crab *Arenaeus cribrarius* was *C.patula* (5.6% of mature crab) from Fortaleza and Ubatuba Bays in Brazil (Costa *et al.* 2010). In this study *C. patula* was recorded on the carapace and cheliped of *P. segnis* and on the carapace of *C. sapidus*.

C. patula was placed mostly on the central region of the carapace of the host *P. segnis* (as *P. pelagicus*). According to Pasternak *et al.* (2002), 91% of the *C. patula* orientation on both small and large crab, were at rostro-carinal axis with

(RCA) angles of no more than 120 degree with respect to the anterior margin of the *P. segnis*.

Males showed a higher infestation rate by *C. patula* when compared to mature non-ovigerous crab females (Costa *et al.* 2010). According to Lawal-Are and Daramola (2010) crabs infested by barnacle lose their market values because of the aesthetic problem.

Present study reports a new host (*P. segnis*) for *C. patula* in the Turkish coast and geographical range northwest to Taşucu (Mersin Bay), on carapace *C. sapidus*. *P. segnis* and *C. sapidus* are economically important crabs were being affected negatively by infestation of *C. patula* by means of their market values, fishery production and their physiology. In order to understand the distribution range and the effects of *C. patula*, especially on the economically important species, further studies should be conducted in the area.

Acknowledgements

The authors thank to Suat captain and the crew of the vessel “Umut” for their help in collecting the material.

Yüzücü yengeç *Portunus segnis* (Forskål, 1775): Türkiye kıyılarında sirriped *Chelonibia patula* (Ranzani, 1818) için konakçı

Özet

Mayıs 2011 zarfında, simbiyotik sirriped *Chelonibia patula* (Ranzani, 1820) İskenderun ve Mersin Körfezi’nden (Türkiye kıyıları) toplanmıştır. *C. patula* tarafından infekte olan 3 yüzücü yengeç *Portunus segnis* (Forskål, 1775) ve 2 mavi yengeç *Callinectes sapidus* Rathbun, 1896 bireyi elde edilmiştir. *C. patula*’nın *P. segnis*’in karapası ve kelipedi üzerinden Türkiye kıyılarından ilk kez rapor edilmektedir ve ayrıca *C. patula*’nın *C. sapidus*’un üzerindeki dağılımı İskenderun Körfezi’nden Mersin Körfezi’ne kadar genişlemiştir.

References

- Bakır, K., Özcan, T., Katağan, T. (2010) On the occurrence of *Chelonibia patula* (Cirripedia) on the coasts of Turkey. *Marine Biodiversity Records* 3: E80, 1-2.
- Beşir, C. (2010) Thoracica species (Crustacea: Cirripedia) distributed along Antalya Bay. MSc. Thesis, Ege University. (in Turkish).
- Corsini-Foka, M., Kondylatos, G., Economidis, P.S. (2004) Occurrence of the Lessepsian species *Portunus Pelagicus* (Crustacea) and *Apogon pharaonis*

(Pisces) in the marine area of Rhodes Island. *Mediterranean Marine Science* 5 (1): 5-17.

Costa, T.M., Christofolletti, R.A., Pinheiro, M.A.A. (2010) Epibionts on *Arenaeus cribrarius* (Brachyura: Portunidae) from Brazil. *Zoologia* 27 (3): 387-394.

Crocetta, F. (2006) First record of *Portunus pelagicus* (Linnaeus, 1758) (Decapoda, Brachyura, Portunidae) in the northern Tyrrhenian Sea. *Crustaceana* 79 (9): 1145-1148.

Demetropoulos, A., Neocleous, D. (1969) The fishes and crustaceans of Cyprus. *Fisheries Bulletin Ministry of Agriculture and Natural Resources of Cyprus* 1: 3-21.

Enzenross, R., Enzenross, L. (1987) Studie über das Vorkommen von Mollusca und Crustacea an der Türkischen Küste (Mittelmeer und Ägäis). *Ravensburg, Unveröffentlichtes Manuskript* pp. 2-17.

Enzenross, R., Enzenross, L. (1990) Wissenschaftlich interessante Funde aus der sammlung Enzenross (Marine invertebraten). *Jahreshefte der Gasellschaft für Naturkunde in Württemberg* 145: 283-294.

Farrapeira, C.M.R. (2009) Barnacles (Crustacea: Cirripedia) of the estuarine and marine areas of the Port of Recife (Pernambuco-Brazil): a monitoring study for bioinvasion. *Cah. Biol. Mar.* 50: 119-129.

Farrapeira, C.M.R. (2010) Shallow water Cirripedia of the northeastern coast of Brazil: The impact of life history and invasion on biogeography. *Journal of Experimental Marine Biology and Ecology* 392: 210-219.

Farrapeira, C.M.R., Coelho-Filho, P.A., Santos, M.A. (2000) Zonação vertical da macrofauna bêmica de substratos consolidados do estuário do Rio Paripe (Itamaracá-PE). *Anais do MANGROVE 2000; Sustentabilidade de Estuários e Manguezais: Desafios e Perspectivas*. Universidade Federal Rural de Pernambuco, Recife, pp. 1-9.

Farrapeira-Assunção, C.M. (1991) Estudo comparativo da macrofauna bentônica de substratos duros em estuários não impactados (Rio Paripe-Itamaracá) e impactados (Rio Capibaribe e Bacia do Pina)-Pernambuco. *Anais do 3º Encontro Nacional de Estudos sobre o Meio Ambiente*. Universidade Estadual de Londrina, Londrina, pp. 80-95.

Fox, H.M. (1924) The migration of a Red Sea crab through the Suez Canal. *Nature* 113: 714-715.

Gaddes, S.W., Sumpton, W.D. (2004) Distribution of barnacle epizoites of the crab *Portunus pelagicus* in the Moreton Bay region, eastern Australia. *Marine and Freshwater Research* 55 (4): 241-248.

- Ghisotti, F. (1966) Il *Callinectes sapidus* Rathbun nel Mediterraneo (Crustacea, Decapoda). *Natura, Milano* 67 (1): 177-180.
- Gruvel, A. (1928) Répartition géographique de quelques Crustacés comestibles sur les côtes d'Égypte et de Syrie. *Centre de Recherche de la Société Biogéographique* 5 (39): 45-46.
- Gruvel, A. (1930) Sur les principales zones chalutables de la Méditerranée orientale. Carte de pêche du golfe d'Alexandrette. *Exploitation actuelle Avenir Revue Scientifique, Paris* 190: 477-479.
- Hasan, H., Zeini, A., Noël, P. (2008) The marine decapod crustacea of the area of Lattakia, Syria. *Crustaceana* 81 (5): 513-536.
- Holthuis, L.B. (1961) Report on a collection of Crustacea Decapoda and Stomatopoda from Turkey and the Balkans. *Zoologische Verhandelingen, Leiden* 47: 1-67.
- Key, M.M., Volpe, J.W., Jeffries, W.B., Voris, H.K. (1997). Barnacle fouling of the blue crab *Callinectes sapidus* at Beaufort, North Carolina. *Journal of Crustacean Biology* 17: 424-439.
- Kocataş, A. (1981) Liste préliminaire et répartition des Crustacés Décapodes des eaux Turques. *Rapports et Procès-Verbaux des Réunions de la Commission Internationale pour l'Exploration Scientifique de la Mer Méditerranée*, 27 (2): 161-162.
- Koukoura, A., Matsa, A. (1998) The thoracican cirriped fauna of the Aegean Sea: new information, check list of the Mediterranean species, faunal comparisons. *Senckenbergiana Maritima* 28: 133-142.
- Lai, J.C.Y., Ng, P.K.L., Davie, P.J.F. (2010) A revision of the *Portunus pelagicus* (Linnaeus, 1758) species complex (Crustacea: Brachyura: Portunidae), with the recognition of four species. *The Raffles Bulletin of Zoology* 58 (2): 199-237.
- Lawal-Are, A.O., Daramola, T.O. (2010) Biofouling of the Barnacle, *Chelonibita patula* (Ranzani) on two Portunid Crabs, *Callinectes amnicola* (De Rocheburne) and *Portunus validus* (Herklots) off Lagos Coast, Nigeria. *European Journal of Scientific Research* 44 (3): 520-526.
- Mahjabeen, J., Mustaqim, J. (1994) New record of an acorn barnacle, *Chelonibia patula* (Cirripedia, Thoracica) from Pakistan. *Crustaceana* 66: 124-126.
- Özcan, T. (2003) Blue crab (*Callinectes sapidus* R., 1896) and sand crab (*Portunus pelagicus* (L., 1758) distribution in the Iskenderun Bay. MSc. Thesis, Mustafa Kemal University p. 42 (in Turkish).

Özcan, T., Katağan, T., Kocatas, A. (2005) Brachyuran crabs from Iskenderun Bay (Southeastern Turkey). *Crustaceana* 78 (2): 237-243.

Pasternak, Z., Abelsono, A., Achituv, Y. (2002) Orientation of *Chelonibia patula* (Crustacea: Cirripedia) on the carapace of its crab host is determined by the feeding mechanism of the adult barnacles. *Journal of the Marine Biological Association of the United Kingdom* 82: 583-588.

Relini, G. (1980) Guide per il riconoscimento delle specie animali delle acque lagunari e costiere Italiane. 2. Cirripedi, Toracici. Rome: Consiglio Nazionale delle Ricerche, pp. 1-116.

Ross, A., Jackson, C.G.Jr. (1972) Barnacle fouling of the ornate diamondback terrapin *Malaclemys terrapin macrospilota*. *Crustaceana* 22: 203-205.

Shields, J.D. (1992) Parasites and symbionts of the crab *Portunus pelagicus* from Moreton Bay, eastern Australia. *Journal of Crustacean Biology* 12: 94-100.

Steinitz, W. (1929) Die Wanderung indopazifischer Arten ins Mittelmeer seit Beginn der Quartarperiode. *Internationale Revue Der Gesamten Hydrobiologie Hydrographie* 22: 1-90.

TUIK (2010) Sea Products Statistics, 2009, Turkish Statistical Institute, Ankara, pp. 1-59.

Received: 17.02.2012

Accepted: 15.05.2012