



Determination of genetic relationships between some endemic *Salvia* species using RAPD markers

Emel SÖZEN *, Ersin YÜCEL

Anadolu University, Science Faculty, Biology Department, Yunusemre Campus 26470, Eskişehir, Turkey

Abstract

In this study, randomly amplified polymorphic DNA (RAPD) analysis was used to determine genetic relationship among four endemic *Salvia* species. A total of 15 primers were screened, among them 7 primers produced polymorphic and reproducible bands. Eighty one DNA bands were amplified, among which 80 bands (98.7%) were polymorphic. The number of bands amplified per primer varied from 7 to 14. Similarity coefficients were calculated and a dendrogram was constructed by using UPGMA algorithm. In dendrogram, the four *Salvia* species were divided into two major clusters. Cluster I included two subclusters, one containing all accessions of *S. wiedemannii* and the other one containing accessions of *S. tchihatcheffii*. Cluster II was also separated into two subclusters. The first subcluster contained all accessions belonging to *S. cryptantha* and the second subcluster contained *S. cyanescens*. The genetic relationships estimated by the RAPD analysis are basically in agreement with morphological data. Thus, RAPD technique is a reliable marker system that can be used to study genetic relationship in the genus *Salvia*.

Key words: *Salvia*, Genetic relationship, RAPD, PCR, Endemic plant

----- * -----

Bazı endemik *Salvia* türleri arasındaki genetik akrabalığın RAPD belirteçleri ile saptanması

Özet

Bu çalışmada, rastgele çoğaltılmış polimorfik DNA (RAPD) analizi 4 endemik *Salvia* türü arasındaki genetik akrabalığı belirlemek amacıyla kullanılmıştır. Toplamda 15 primer denenmiş bunlardan 7'si polimorfik ve tekrar çoğaltılabilen bantlar oluşturmuştur. Çoğaltılan 81 banttan 80'i (%98.7) polimorfiktir. Primer başına çoğaltılan bant sayısı 7 ile 14 arasında değişmiştir. Benzerlik katsayısı hesaplanarak UPGMA işlemi ile dendrogram oluşturulmuştur. Bu dendrogramda 4 *Salvia* türü iki ana kümeye ayrılmıştır. Birinci küme iki alt kümeye ayrılarak ilki *S. wiedemannii*'ye ait bireyleri, diğer alt küme ise *S. tchihatcheffii*'ye ait bireyleri içermiştir. İkinci küme de iki alt kümeye ayrılmıştır. İlk alt küme *S. cryptantha*'ya ait bireyleri içerirken ikinci alt küme *S. cyanescens*'i içermiştir. RAPD analizi ile belirlenen bu genetik ilişki temelde morfolojik verilerle uyum göstermektedir. Dolayısıyla, RAPD tekniği *Salvia* cinsi içerisinde genetik akrabalık çalışmalarında kullanılabilir, güvenilir bir belirteç sistemidir.

Anahtar kelimeler: *Salvia*, genetik ilişki, RAPD, PCR, endemik bitki

1. Introduction

Salvia, with over 900 species from both the Old and New World, is the largest genus in the Lamiaceae (Walker et al., 2004). In Turkey, *Salvia* genus is represented by 89 species and 94 taxa and about 50% of which are endemic (Hedge, 1982). Many species of the Lamiaceae are aromatic and are often used as herbs, herbal tea, spices, folk medicines, antioxidant, and fragrances. All of these properties make the *Salvia* very important in the food and drug industry. In addition, *Salvia* species are grown in parks and gardens as ornamental plants (Nakipoglu, 1993).

Information about genetic diversity is important not only for the study of the flora, but also to elaborate strategies of conservation and rational use of genetic resources. Despite its economical importance, *Salvia* has been poorly studied genetically. DNA markers are considered the best tools for determining genetic relationships, as they are unlimited in number, show high polymorphism and are independent of environmental interaction. Several marker

* Corresponding author / Haberleşmeden sorumlu yazar: Tel.: +902223350850; Fax.: +902223204910; E-mail: esozen@anadolu.edu.tr

systems have been developed for DNA fingerprinting such as restriction fragment length polymorphism (RFLP) (Botstein et al. 1980), simple sequence repeats (SSRs) (Tautz 1989), randomly amplified polymorphic DNAs (RAPD) (Williams et al. 1990), inter simple sequence repeats (ISSR; Zietkiewicz *et al.*, 1994), and amplified fragment length polymorphism (AFLP; Vos *et al.*, 1995). Among these, RAPD is an inexpensive and rapid method not requiring any information regarding the genome, and has been widely used to study the genetic diversity in several plants (Belaj et al. 2001; Deshwall et al. 2005). Within the Lamiaceae family, RAPD markers were used to study intraspecific variations in several aromatic and medicinal species such as *Salvia fruticosa* Mill. (Skoula et al. 1999), *Thymus vulgaris* L. (Echeverrigaray et al. 2001), and *Cunila galioides* (Fracaro et al. 2005).

In this study, we have focused on four *Salvia* species, *Salvia cryptantha*, *S. cyanescens*, *S. tchihatcheffii* and *S. wiedemannii*, which are all endemic, and they were recorded as either near threatened (*S. tchihatcheffii*) or least concern in Turkish Red Data Book (Ekim et al. 2000). Until today, no molecular study was performed on these four *Salvia* species, there are only few reports about their chemical composition (Başer, 1995; 2000; Topçu ve ark. 1997) and seed germination characteristics (Yücel and Yılmaz, 2009; Yücel, 2000). Based on their potential as aromatic and medicinal plants, the objective of the present study was to examine genetic relationships among these endemic *Salvia* species growing in Turkey by using RAPD markers.

2. Materials and methods

2.1. Plant material

Four endemic *Salvia* species (*Salvia cryptantha*, *S. cyanescens*, *S. tchihatcheffii* and *S. wiedemannii*) were used in this study. Fresh leaves and whole plant samples were collected at different locations in Eskişehir (Table 1) between June 2002 and July 2003. The sampled leaves were kept at 0 °C in plastic bags during field work and then stored at -20 °C until DNA extraction. Herbarium specimens were taxonomically characterized and deposited at the Herbarium of Anadolu University (ANES).

Table 1. List of *Salvia* genotypes and details of collection sites

Species	Population No.	Sample size	Locality	Latitude, longitude, altitude
<i>Salvia cryptantha</i>	1	10	402 Eskişehir, Alpu, Doğanoglu village, Karasakal cemetery	South, N 39° 49' 110", E 31° 09' 575", 850 m.
	2	1	406 Eskişehir, Mihaliççık, Ahırköy	West, N 39° 47' 121", E 31° 31' 933", 848 m.
	3	9	408 Eskişehir, Mihaliççık, Üçbaşlı village	East, N 39° 47' 668", E 31° 39' 629", 942 m.
	4	1	413 Eskişehir, Akkaya village	East, N 39° 37' 592", E 30° 23' 352, 857 m.
	5	5	414 Eskişehir, Gökçekısık village	East, N 39° 40' 358", E 30° 24' 006", 851 m.
<i>Salvia tchihatcheffii</i>	1	1	402 Eskişehir, Alpu, Doğanoglu village, Karasakal cemetery	South, N 39° 49' 110", E 31° 09' 575", 850 m.
	2	10	406 Eskişehir, Mihaliççık, Ahırköy	West, N 39° 47' 121", E 31° 31' 933", 848 m.
	3	10	407 Eskişehir, Mihaliççık, Üçbaşlı village	East, N 39° 46' 424", E 31° 39' 392", 848 m.
	4	5	414 Eskişehir, Gökçekısık village	East, N 39° 40' 358", E 30° 24' 006", 851 m.
	5	2	415 Eskişehir, Musaözü	North, N 39° 41' 316", E 30° 18' 446", 938 m.
<i>Salvia wiedemannii</i>	1	10	402 Eskişehir, Alpu, Doğanoglu village, Karasakal cemetery	South, N 39° 49' 110", E 31° 09' 575", 850 m.
	2	10	409 Eskişehir, Mihaliççık, Üçbaşlı village, Kızılbilbel	North, N 39° 45' 550", E 31° 37' 525", 762 m.
	3	5	413 Eskişehir, Akkaya village	East, N 39° 37' 592", E 30° 23' 352", 857 m.
	4	5	416 Eskişehir, Akçayır village	North, N 39° 44' 159", E 30° 23' 225", 918 m.
<i>S. cyanescens</i>	1	1	Eskişehir-Ankara highway 40.km.	

2.2. DNA isolation and RAPD-PCR

Genomic DNA was extracted from 0.5 g powdered leaf tissue by using Genomic DNA Purification Kit (Fermentas, Maryland, USA). The quantity and quality of DNA were determined with a Nanodrop® ND-1000 spectrophotometer (Wilmington, Delaware, USA). DNA samples were diluted to 5 µl with DNase-RNase free water (AppliChem, Darmstadt, Germany) and stored at -20°C.

The decamer oligonucleotide primers (Kit AB) used for PCR amplification were purchased from Operon Technologies (Alameda, USA) (Table 2). PCR amplifications were performed in a 25 µl reaction mixture containing 15 ng of template DNA, 1X Taq polymerase buffer and 1 U of Taq polymerase (Fermentas, Maryland, USA), and 2.5 mM MgCl₂, 1 mM dNTP, 1 µM primer. Amplifications were carried out in a Progene Thermal Cycler (Techne Inc., Burlington, USA). The PCR amplification cycle was programmed for an initial denaturation step of 94 °C for 2 min, followed by 40 cycles of 94 °C for 1 min, 36 °C for 30 s, 72 °C for 2 min, and a final elongation at 72 °C for 7 min. The PCR products were separated on a 1.5 % agarose gel containing ethidium bromide (0.5 µg/ml) and digitally photographed with the UVIpro gel documentation system (UVItec, Cambridge, UK). A negative control with no DNA template was also included in each PCR amplification in order to verify the absence of contamination. Duplicate amplifications were conducted for each RAPD primer in order to ensure reproducible results.

2.3. Data Analysis

The presence (1) or absence (0) of the amplified bands were scored for each primer. Faintly stained bands were not considered. The genetic similarity between *Salvia* species was calculated according to the Jaccard's coefficient (Jaccard, 1908) and a dendrogram was generated by Unweighted Pair Group Method with Arithmetic Mean (UPGMA; Sneath & Sokal, 1973) and the SAHN clustering analysis. All analyses were done using the NTSYS-pc 2.01 software package (Rohlf, 1998).

Table 2. List of RAPD primers used in this study

Code	5'-3' Nucleotide sequence	Annealing temperature (°C)
AB-01	CCGTCGGTAG	34
AB-02	GGAAACCCCT	32
AB-03	TGGCGCACAC	34
AB-04	GGCACGCGTT	34
AB-05	CCCGAAGCGA	34
AB-06	GTGGCTTGGA	32
AB-07	GTAAACCGCC	32
AB-08	GTTACGGACC	32
AB-09	GGGCGACTAC	34
AB-10	TTCCCTCCCA	32
AB-11	GTGCGCAATG	32
AB-12	CCTGTACCGA	32
AB-14	AAGTGCGACC	32
AB-15	CCTCCTTCTC	32
AB-16	CCCGGATGGT	34
AB-17	TCGCATCCAG	32
AB-18	CTGGCGTGTC	34
AB-20	CTTCTCGGAC	32

3. Results

As an initial step, a total of 15 arbitrary 10-mer primers was screened. All primers amplified *Salvia* DNA, but only 7 of them gave consistently reproducible banding patterns among samples (Table 2). A total of 81 bands were scored of which 80 (98.7%) were polymorphic. Six primers (OPAB 2, 3, 5, 7, 9, 11 and 14) amplified 100% polymorphic bands. Of the total bands generated, only one was found to be monomorphic across all genotypes (OPAB-9, 450 bp). The number of bands amplified per primer varied from 7 to 14, a minimum of 7 bands were generated by the primer OPAB 2 while the maximum of 14 bands were amplified with primer OPAB 9. The size of the amplified products varied from 200 to 2400 bp. RAPD profiles of a representative primer OPAB 9 are shown in Fig 1.

Pairwise genetic similarities (Table 3) generated using Jaccard's similarity coefficient ranged from as low as 0.130 between populations of *S. tchihatcheffii* and *S. crypthanta*, to as high as 0.667 between two populations of *S. wiedemannii*. At the interspecific level, the highest similarity value was 0.400 between *S. wiedemannii* and *S. crypthanta*, while the lowest value was 0.130 between *S. tchihatcheffii* and *S. crypthanta*.

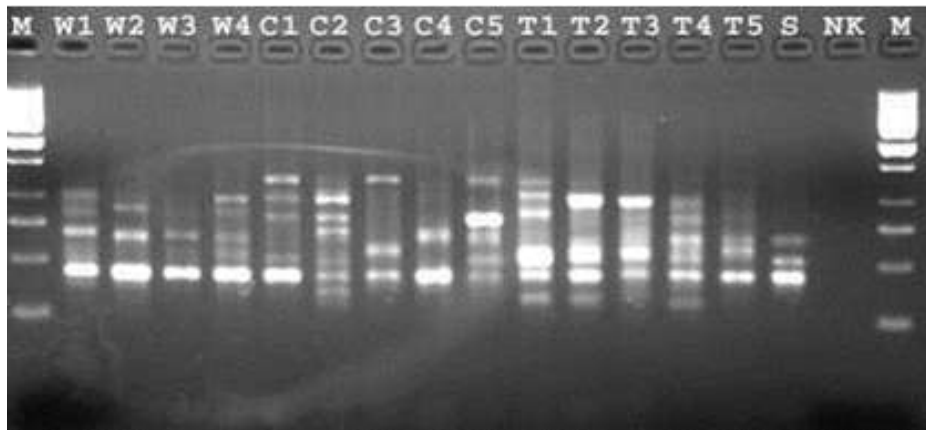


Figure 1. RAPD band profile produced with OPAB-9 primer
M, 1kb DNA ladder (Fermentas), W1-4, *S. wiedemannii*; C1-5, *S. cryptantha*;
T1-5, *S. tchihatcheffii*; S, *S. cyanescens*, NK, negative control.

The mean genetic similarity was highest among *S. wiedemannii* at 0.527 ± 0.1 , followed by *S. tchihatcheffii* at 0.447 ± 0.09 , and *S. cryptantha* at 0.395 ± 0.08 . Since only a single accession was used, the mean genetic similarity value for *S. cyanescens* could not be obtained.

Table 3. Jaccard similarity estimates among *Salvia* species computed from RAPD band profiles

	5W1	5W2	5W3	5W4	5C1	5C2	5C3	5C4	5C5	5T1	5T2	5T3	5T4	5T5	5C
5W1	1.000														
5W2	0.667	1.000													
5W3	0.476	0.600	1.000												
5W4	0.461	0.560	0.400	1.000											
5C1	0.400	0.303	0.345	0.278	1.000										
5C2	0.242	0.200	0.226	0.184	0.324	1.000									
5C3	0.267	0.258	0.250	0.235	0.437	0.323	1.000								
5C4	0.226	0.258	0.296	0.167	0.394	0.323	0.400	1.000							
5C5	0.258	0.212	0.286	0.162	0.516	0.353	0.344	0.536	1.000						
5T1	0.216	0.243	0.235	0.256	0.233	0.182	0.139	0.167	0.250	1.000					
5T2	0.244	0.268	0.231	0.279	0.255	0.289	0.196	0.196	0.273	0.512	1.000				
5T3	0.343	0.371	0.257	0.308	0.250	0.286	0.159	0.186	0.182	0.381	0.600	1.000			
5T4	0.297	0.290	0.216	0.238	0.273	0.250	0.130	0.209	0.233	0.372	0.354	0.356	1.000		
5T5	0.237	0.333	0.294	0.308	0.250	0.174	0.186	0.244	0.182	0.381	0.454	0.538	0.525	1.000	
5C	0.243	0.237	0.265	0.250	0.227	0.204	0.282	0.219	0.244	0.212	0.286	0.229	0.277	0.255	1.000

UPGMA cluster analysis of the genetic similarity values generated a dendrogram illustrating the overall genetic relationships between the species studied and the accessions within those species (Fig. 2). UPGMA dendrogram revealed two distinct clusters, the first cluster was further divided into two subclusters, one comprising all accessions of *S. wiedemannii* and the other one contained all accessions belonging to *S. tchihatcheffii*. The second cluster was also separated into two subclusters. The first subcluster included all accessions belonging to *S. cryptantha* and the second subcluster contained *S. cyanescens*.

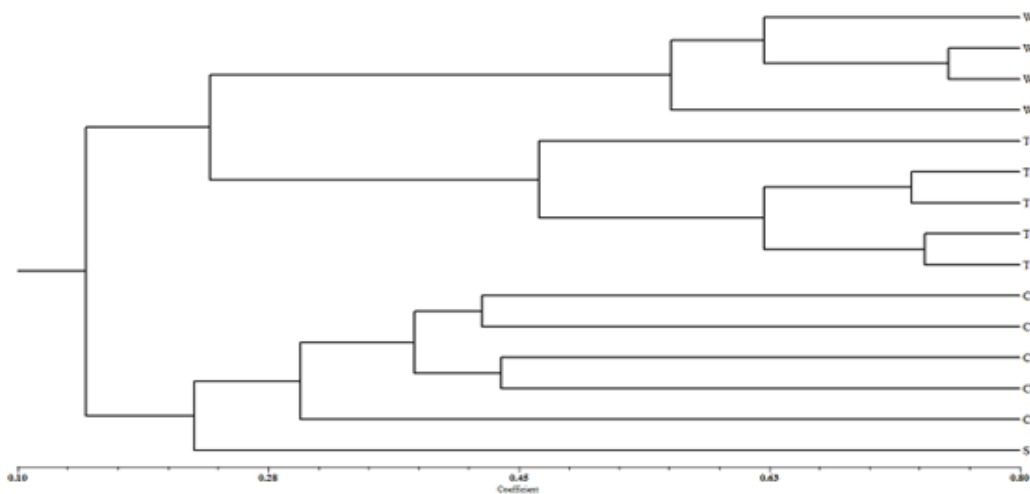


Figure 2. UPGMA dendrogram of 15 *Salvia* accessions generated by using Jaccard similarity coefficient based on RAPD analysis. W: *S. wiedemanniana*, T: *S. tchihatcheffii*, C: *S. cryptantha*, S: *S. cyanescens*

4. Conclusions

RAPD polymorphism detected in four endemic *Salvia* species revealed a high level of variability suggesting that RAPD technique is an efficient approach for genetic diversity studies at inter-specific level. This technique can quickly and cost-effectively generate markers for species without genomic sequence information. Despite of some limitations such as low reproducibility and dominance, the technical simplicity of the RAPD technique has facilitated its use in the analysis of genetic relationship in several plant genera (Li et al., 1999; Kapteyn et al., 2002; Agostini et al., 2008; Ogunkanmi et al., 2010).

In this study, the polymorphism level detected between four *Salvia* species was 98.7%. This result emphasizes the significant genotypic divergences among the species studied. However, when a single species was considered, the percentage of polymorphic bands was 83.9% for *S. tchihatcheffii*, 87.6 % for *S. wiedemanni*, 93.8% for *S. crypthanta*. This percentage of polymorphism is higher than those previously reported at the intraspecific level for other medicinal and aromatic species of the Lamiaceae family: 63.8 and 59.8% for thyme (Echeverrigaray et al., 2001) and dittany (Fracaro et al., 2005), respectively. Genetic relationships between commercial cultivars and Brazilian accessions of *Salvia officinalis* L. were also estimated by using RAPD markers (Echeverrigaray and Agostini, 2006). It was found that in *S. sclarea* 73% of the bands were polymorphic. However, in *S. officinalis* the percentage of polymorphic bands was 59.5 %. A wide genetic variation was also obtained among some other *Salvia* species: balsamic sage (*Salvia tomentosa* Mill.), European sage (*Salvia sclarea* L.), meadow sage (*Salvia virgata* Jacq.), Anatolian sage (*Salvia fruticosa* Mill.) and Turkish sage (*Salvia dichroantha* Stapf.) using combined PCR-RFLP and DAMD-PCR techniques (Karaca et al., 2008).

Cluster analysis indicated that all 15 samples could be distinguished by RAPD markers. In UPGMA dendrogram the first cluster included accessions of *S. wiedemanni* and *S. tchihatcheffii* in different subclusters. On the other hand, the first subcluster of second cluster contained all accessions of *S. crypthanta*, while the second subcluster contained *S. cyanescence*. These results were concordant with morphological data. For example, in flora of Turkey *S. tchihatcheffii* and *S. wiedemanni* were grouped together (Hedge, 1982). They both show suffruticose stems and linear-oblong or shortly obovate-cuneate terminal leaflet characteristics. Moreover, these two species have another common morphological characters; their calyces are expanded in fruit and not membranous-reticulate, and the upper lip is clearly 3-lobed and toothed. *S. crypthanta* which formed the second cluster, has calyces that are expanded in fruit, membranous-reticulate, the upper lip subentire or indistinctly toothed. On the other hand, molecular data did not support morphological data for *S. cyanescence* which constituted other subcluster of the second cluster. This species is characterised by several cauline leaves and many-flowered inflorescence expected to form another distinct cluster in the dendrogram. Using only a single accession, could be one of the reason for discrepancy between molecular and morphological data for *S. cyanescence*.

In conclusion, RAPD markers are an efficient marker system that can be used to determine genetic relationships among closely related *Salvia* species as well as identification of *Salvia* genotypes..

Acknowledgements

This research was supported by Anadolu University Scientific Research Projects grant (Project No: 011072).

References

- Agostini, G., Echeverrigaray, S., Souza-Chies, T. T. 2008. Genetic relationships among South American species of *Cunila* D. Royen ex L. based on ISSR. *Plant Systematics and Evolution* 274/3: 135-141.
- Başer, K.H.C. 1995. Composition of the essential oil of *Salvia cryptantha* from Turkey, *Journal of Essential Oil Research*, 7: 113-114.
- Başer, K.H.C. 2000. In: A. Güner vd. (ed.) *Index to Turkish Plant Chemical Contents, Flora of Turkey and the East Aegean Islands*, Vol. 11: 538-542.
- Belaj, A., Trujilo, I., Rosa, R., Rallo, L., Gimenez, M.J. 2001. Polymorphism and discrimination capacity of randomly amplified polymorphic markers in an olive germplasm bank. *J Am Soc Hort Sci* 126: 64–71
- Botstein, D., White R.L., Skolnick, M., Davis, R.W. 1980. Construction of a genetic linkage map in man using restriction fragment length polymorphism. *American Journal of Human Genetics* 32: 314–331.
- Deshwall, R.P.S., Singh, R., Malik, K., Randhawa, G.J. 2005. Assessment of genetic diversity and genetic relationships among 29 populations of *Azadirachta indica* A. Juss. using RAPD markers. *Genetic Resources and Crop Evolution* 52: 285–292
- Echeverrigaray, S.; Agostini, G. 2006. Genetic relationships between commercial cultivars and Brazilian accessions of *Salvia officinalis* L. based on RAPD markers. *Rev. Bras. Pl. Med.* 8: 13-17.
- Echeverrigaray, S.; Agostini, G.; Atti-Serfini, L.; Paroul, N.; Pauletti, G. F.; Atti dos Santos, A. C. 2001. Correlation between the chemical and genetic relationships among commercial thyme cultivars. *Journal of Agricultural and Food Chemistry* 49: 4220–4223.

- Ekim T., Koyuncu, M., Vural, M., Duman, H., Aytaç, Z. & Adıgüzel, N. 2000. *Turkish Plants Red Data Book.*, Doğal Hayatı Koruma Derneği ve Yüzüncüyıl Üniversitesi, Ankara.
- Fracaro, F.; Zacaria, J.; Echeverrigaray, S. 2005. RAPD based genetic relationships between populations of three chemotypes of *Cunila galioides* Benth. *Biochemical Systematics and Ecology* 33: 409–417.
- Hedge, I.C., 1982. *Salvia* L. In: Davis, P.H. (Ed.), *Flora of Turkey and the East Aegean Islands*, vol. 7. Edinburgh University Press, Edinburgh, pp.400-461.
- Jaccard, P. 1908. Nouvelles recherches sur la distribution florale. *Bulletin de la Societe Vaudoise des Science Naturelles* 44: 223–270.
- Kapteyn, J., Goldsbrough, P. B., Simon, J. E. 2002. Genetic relationships and diversity of commercially relevant Echinacea species. *Theoretical and Applied Genetics* 105: 369–376.
- Karaca, M., Ince, A. G., Tugrul Ay, S., Turgut, K., Onus, A. N. 2008. PCR-RFLP and DAMD-PCR genotyping for *Salvia* species. *J Sci Food Agric* 88: 2508-2516.
- Li, Y.G., C.L. Dewald, and P.L. Sims. 1999. Genetic relationships within *Tripsacum* as detected by RAPD variation. *Annals of Botany* 84:695–702.
- Nakıpoğlu, M. 1993. Türkiye'nin bazı *Salvia* L. Türleri üzerinde karyolojik araştırmalar II. *S.viridis* L., *S.dlutinosa* L., *S.virgata* Jacq., *S.verbenaca* L., *Turkish Journal of Botany* 17: 157-161.
- Oguncanmi, L.A., Okunowo, W.O., Oyelakin, O.O., Oboh, , Adesina, O.O., Adekoya, K.O., Ogundipe, O.T. 2010. Assessment of genetic relationships between two species of jute plants using phenotypic and RAPD markers. *International Journal of Botany* 6: 107-111.
- Rohlf, F.J. 1998. NTSYSpc: Numerical Taxonomy and Multivariate Analysis System. Version 2.02. Exeter Software, Setauket.
- Skoula, M.; Hilali, I. E.; Makris, A. M. 1999. Evaluation of the genetic diversity of *Salvia fruticosa* Mill. clones using RAPD markers and comparison with essential oil profiles. *Biochemical Systematics and Ecology* 27/6: 559–568.
- Sneath, P.H.A., Sokal, R.R. 1973. *Numerical taxonomy*. Freeman Press, San Francisco, California, USA.
- Tautz, D. 1989. Hypervariability of simple sequences as a general source of polymorphic DNA markers. *Nucleic Acids Research* 17: 6463–6471
- Topçu, G., Kartal, M., Ulubelen, A. 1997. Terpenoids from *Salvia tchihatcheffii*, *Phytochemistry* 44/7: 1393-1395.
- Vos, P., Hogers, R., Bleeker, M., Reijans, M., van de Lee, T., Hornes, M., Frijters, A., Pot, J., Peleman, J., Kulper, M., Zabeau, M. 1995. AFLP: a new technique for DNA fingerprinting. *Nucleic Acids Research* 23/21: 4407-4414.
- Walker, J.B., Sytsma, K.J., Treutlein, J., Wink, M. 2004. *Salvia* is not monophyletic: implications for the systematics radiation and ecological specializations of *Salvia* and tribe Mentheae. *American Journal of Botany* 91: 1115–1125.
- Williams, J.G.K., Rubelik, A.R., Livak, K.J., Rafalski, J.A., Tingey, S.V. 1990. DNA polymorphisms amplified by arbitrary primers are useful as genetic markers. *Nucleic Acids Research* 18: 6531–6535.
- Yücel, E. 2000. Effects of different Salt (NaCl), nitrate (KNO₃) and acid (H₂SO₄) concentrations on the germination of some *Salvia* species seeds. *Seed Science & Technology* 28: 853-860.
- Yücel, E., Yılmaz, G. 2009. Effects of different alkaline metal salts (NaCl, KNO₃), acid concentrations (H₂SO₄) and growth regulator (GA₃) on the germination of *Salvia cyanescens* Boiss. & Bal. *Seeds. G.U. Journal of Science* 22/3: 123-127.
- Zietkiewicz E., Rafalski, A., Labuda, D. 1994. Genome fingerprinting by simple sequence repeat (SSR) anchored polymerase chain reaction amplification. *Genomics* 20: 176–183.

(Received for publication 17 October 2015; The date of publication 15 December 2015)