

## The Greek Coins of Black Sea Region at Burdur Archaeological Museum

Hüseyin Köker

The coin collection of Burdur Archaeological Museum includes 81 coins from Black Sea Region<sup>1</sup>. Unfortunately, we do not know where the coins were found. All the coins had been added to the collection through purchasing. The bulk of the coins in the catalogue below are from Tauric Chersonesus: Panticapaeum (1), Thrace: Byzantium (1), Byzantium-Chalchedon (1); Pontus: Amaseia (2), Amisus (61), Cabeira (1), Chabacta (1), Comana (1); Paphlagonia: Amastris (4) and Sinope (6). Two coins are uncertain from Bosphorus on Pontus and both of them are bronze.

The mints of seventy nine coins have been identified, but the remaining two are from an uncertain mint. All coins but four (numbers 1-3, 70) were minted at cities in Pontus and Paphlagonia during the reign of Mithradates VI Eupator (120-63 B.C). 17 of them appear to be a small part of a hoard whose acquisition dates and the dealers are the same (inv. nos. 11711-11719 and 11721-11728). However, they will be evaluated within the others since we are not sure if these coins are from a hoard. Four coins, which mentioned above, belong to Panticapaeum, Byzantium, Byzantium-Chalchedon and Amastris, which are dated between the 5<sup>th</sup> and the 4<sup>th</sup> centuries B.C. (numbers 1-3, 70). The unidentified two, dated to the 2<sup>nd</sup> - 1<sup>st</sup> century B.C., are quite rare and should belong to a city in Pontus or Paphlagonia.

The coins dated to the reign of Mithradates in the collection are 75 in number and are represented by the cities of Amaseia (2), Amisus (61), Cabeira

---

\* I would like to thank the General Directorate for Cultural Heritage and Museums, as well as to the Directorate of Burdur Archaeological Museum for having given me permission to study and publish the Greek Coins of the museum. In addition, I would like to extend my thanks to Mr H. Ali Ekinci, the director of the museum for facilitating my work and providing me with a suitable working environment. I would also like to thank Miss Alime Çankaya, the researcher of the museum.

<sup>1</sup> There is one coin from Istrus in the collection which is obol and is a modern fake, thus it is not included in the catalogue.

(1), Chabacta (1), Comana (1), Amastris (3) and Sinope (6). The majority of the coins belongs yielded to Amisus and they are followed by Sinope and Amastris. The previous studies also the same result (Sivas 1999: 98-99). It is obvious that among all the cities in Pontus and Paphlagonia, Amisus was the one where coins were being minted most heavily.

The coins of the Mithradatic period in the collection were minted in three different denominations which are *obolos* (Young male head in leather cap-Quiver, Head of Zeus-Eagle on thunderbolt, Head of Athena-Perseus), *dikhalkos* (Winged head of youth-Cornucopiae between pilei, Head of Eros-Quiver, Head of Dionysos-Thyrsos) and *tetrakhalkos* (Head of Ares-Sword in sheath, Aegis-Nike, Head of Dionysos-Thyrsos, Head of Mithradates-Cista Mystica, Head of Perseus-Pegasus, Head of Zeus-Eagle on thunderbolt). *Tetrakhalkos*, with amount of a total of 70 percent, forms the major group. The most represented types on these coins were minted in that denomination. *Dikhalkos* (13 percent) and *obolos* (11 percent) follow this denomination. Within these three denominations the weight and the diameter of the coins are close to each other.

The letters (probably "IB") or the monogram seen on Ares-sword in shield type (cat. no. 26) cannot be discerned, because the upper right part of the coin's reverse is well worn, while another monogram (mon. 8) is visible on the bottom left part. However, when we take the monogram on the bottom right part (mon. 7) and the examples given in the references into consideration, the monogram in question should be same with those seen on the coins in *Malloy* 32e and *Karbadüz* page 59-60 numbers 76-85. Although only a small part of the monogram (mon. 11) is visible on the right part on the reverse of the Amisus coin with the Aegis-Nike type (cat. no. 40), it should be the same with those on the *Sivas*, pages 45-46 no.s 311-325. The monogram, which is only right side, the letter 'E', is visible at the left reverse side of on another Amisus coin (no. 42), and this has to be the same monogram as the *Sivas* page 51-53 no's. 457-96. Another monogram (mon. 18), half-readable, on the reverse of an Amisus coin with the type Head of Zeus-Eagle on thunderbolt (no. 62), has to be the same as the one at *Kabadüz* page 63 no. 140. It is remarkable that, contrary to the other examples cited in the references, the monogram on the reverse of the Athena head-Perseus type from Sinope (mon. 9) is on the right.

## Catalogue

The coins indicated with an asterisk in the catalogue and the monograms given in brackets are at the end of the catalogue.

### TAURIC CHERSONESUS

#### Panticapeum

2<sup>nd</sup> -1<sup>st</sup> cent. B.C.

Obv. Head of Pan, l., wearing ivy wreath.

Rev. Cornucopiae between pilei; below ΠΑΝ-ΤΙ

Ref. *BMC* 39; *SNG Cop., Thrace*, 53-4; *SNG München*, 52-55; *SNG BM Black Sea*, 924-5.

1\*. AE. 12 h, 18 mm, 3.18 gr., Inv. No. 27002

### THRACE

#### Byzantium

5<sup>th</sup>-4<sup>th</sup> cent. B.C.

Obv. Cow on dolphin, above mon. 1

Rev. Trident between two dolphins.

Ref. *Schönert-Geiss*, 871-913; *SNG Cop., Thrace*, 488; *SNG BM Black Sea*, 49-50.

2\*. AE. 6 h, 16 mm, 3.2 gr., Inv. No. 8470

#### Byzantium-Chalcedon

3<sup>rd</sup> cent. B.C.

Obv. Head of Poseidon r., with diadem.

Rev. Athena Promachos r., ΒΥΖΑΝ-ΚΑΛΧΑ

Ref. *Schönert-Geiss*, 1296-1300.

3\*. AE. 12 h, 25/26 mm, 9.7 gr., Inv. No. 5984

### PONTUS

#### Amaseia

c. 125-100 B.C. Reign of Mithradates VI Eupator

Obv. Winged head of youth, r.

Rev. Cornucopiae between two pilei, above stars; ΑΜΑΣ-ΣΗΙΑΣ

Ref. *SNG Copenhagen*, 104-5; *SNG v. Aulock*, 15-6; *SNG BM Black Sea*, 1046-47.

4\*. AE. 12 h, 18 mm, 3.60 gr., Inv. No. 26627

5. AE. 12 h, 17 mm, 3.72 gr., Inv. No. 26613

**Amisus****c. 125-100 B.C. Reign of Mithradates VI Eupator**

Obv. Winged head of youth, r.

Rev. Cornucopiae between two pilei, above stars; AMI-ΣOY

Ref. *SNG Copenhagen*, 161-2; *SNG v. Aulock*, 69-70; *SNG v. Aulock, Nachträge*, 6720-1; *Malloy*, 36; *SNG BM Black Sea*, 1129-33.

6. AE. 12 h, 16 mm, 2.7 gr., Inv. No. 3231 Rev. [AMI-Σ]OY

7\*. AE. 12 h, 18/19 mm, 3.52 gr., Inv. No. 799

8. AE. 12 h, 17 mm, 3.6 gr., Inv. No. 6018

9. AE. 12 h, 17 mm, 3.76 gr., Inv. No. 1837

Obv. Head of male wearing leather cap, r.

Rev. Quiver; AMI-ΣOY

Ref. *SNG Copenhagen*, 131; *SNG v. Aulock*, 57-8; *Malloy*, 12; *SNG BM Black Sea*, 1135-38.

10. AE. 12 h, 26 mm, 20.58 gr., Inv. No. 26609

11\*. AE. 12 h, 27 mm, 20.8 gr., Inv. No. 12543

Obv. Head of Artemis r., bow and quiver on shoulder.

Rev. Tripod; [A]MI-ΣOY

Ref. *SNG Copenhagen*, 138; *SNG v. Aulock*, 67; *Malloy*, 18; *SNG BM Black Sea*, 1139.

12\*. AE. 12 h, 20 mm, 8.3 gr., Inv. No. 9120

**c. 125-100 B.C. Reign of Mithradates VI Eupator**

Obv. Head of Eros r.

Rev. Quiver and unstrung bow; AMI-ΣOY

Ref. *SNG Copenhagen*, 163-4; *SNG v. Aulock Pontus*, 71; *SNG v. Aulock, Nachträge*, 6730; *Malloy*, 37; *SNG BM Black Sea*, 1142-1143.

13\*. AE. 12 h, 16/17 mm, 3.6 gr., Inv. No. 11717

**c. 100-85 B.C. Reign of Mithradates VI Eupator**

Obv. Head of Zeus r., laur.

Rev. Eagle l., on thunderbolt, below AMIΣOY

Ref. *Kabadüz* 136; *Samsun*, 1-7; *SNG BM Black Sea*, 1144.

14\*. AE. 12 h, 25/26 mm, 20.8 gr., Inv. No. 11711

- Obv. Head of Ares r., in crested helmet.  
Rev. Sword in sheath; AMI-ΣOY
15. AE. 12 h, 20 mm, 6.5 gr., Inv. No. 3059 Ref. *Kabadüz*, 61-116; *Samsun*, 34-53; *SNG BM Black Sea*, 1147-49.
  16. AE. 12 h, 19/20 mm, 6.62 gr., Inv. No. 24369 Rev. AMI-[ΣOY] Ref. same as above.
  17. AE. 12 h, 21 mm, 7.1 gr., Inv. No. 3065 Rev. AMI-ΣO[Y] Ref. same as above.
  - 18\*. AE. 11 h, 19/20 mm, 7.2 gr., Inv. No. 11714 Rev. AMI-[ΣOY] Ref. same as above.
  19. AE. 12 h, 19/20 mm, 7.1 gr., Inv. No. 3990 Rev. below l., mon. 2; AMI-Σ[OY]
  20. AE. 12 h, 20/21 mm, 7.90 gr., Inv. no. 22162 Rev. AMI-ΣOY
  21. AE. 12 h, 19/20 mm, 7.5 gr., Inv. No. 11712 Rev. above l., star and crescent, below l., mon. 3; AMI-Σ[OY] Ref. *SNG Copenhagen*, 152; *SNG Tübingen*, 2058; *Malloy*, 31a; *Kabadüz*, 96; *Samsun*, 70-4; *SNG BM Black Sea*, 1156-157.
  - 22\*. AE. 12 h, 21/22 mm, 8.38 gr., Inv. No. 26612 Rev. same as above; AMI-[ΣOY]
  23. AE. 12 h, 20/21 mm, 8.18 gr., Inv. No. 26616 Rev. above l., star and crescent; below l., mon. 4; AMI-ΣOY; Ref. *SNG Copenhagen*, 151; *Malloy*, 31d; *Kabadüz*, 103; *Samsun*, 75-7; *SNG BM Black Sea*, 1158.
  - 24\*. AE. 12 h, 20 mm, 6.24 gr., Inv. No. 18838 Rev. above l., star and crescent; below l., mon. 5; Ref. *Kabadüz*, 102; *Samsun* 74.
  - 25\*. AE. 12 h. 19 mm, 7.56 gr., Inv. No. 15008 Rev. above l., star and crescent; above r., IB; below l., mon. 4; r., mon. 6; Ref. *Kabadüz*, 72 ; *Samsun*, 132 ; *SNG BM Black Sea*, 1159
  - 26\*. AE. 12 h, 19 mm, 7.8 gr., Inv. No. 6036 Rev. above l., star and crescent; above r., ?; below l., mon. 7; below r., mon. 8; AMI-[ΣOY]; Ref. Cf. *Malloy*, 32e; *Kabadüz*, 76-85; *Samsun*, 146-162.
  27. AE. 12 h, 19 mm, 8.98 gr., Inv. No. 20144 Rev. above l., star and crescent; above r., IB ?; below l., mon. 7; below r., mon. ?; AMI- ΣO[Y]

### c. 85-65 B.C. Reign of Mithradates VI Eupator

- Obv. Head of Athena Parthenos r., in decorated helmet.  
Rev. Perseus l., holding Medusa's head and harpy; at feet the winged body of Medusa; AMI-ΣOY
- Ref. *SNG Copenhagen*, 136-7; *SNG v. Aulock*, 63; *SNG v. Aulock, Nachträge*, 6722; *Malloy*, 16a; *SNG Tübingen*, 2049; *Kabadüz*, 127-135; *Samsun*, 8-33; *Sivas*, 11-15; *SNG BM Black Sea*, 1166-76.
- 28\*. AE. 12 h, 30 mm, 18.46 gr., Inv. No. 20727 Rev. to l., mon. 9; to r., mon. 10  
Ref. *Malloy*, 16s; *Sivas*, 11-15.
  29. AE. 12 h, 28/29 mm, 19.1 gr., Inv. No. 4345 Rev. mon. illegible; AMI-Σ[OY]

Obv. Aegis.

Rev. Nike r., holding palm; AMI-ΣOY

30. AE. 12 h, 22 mm, 6.3 gr., Inv. No. 8427 *Rev.* no monogram; [A]MI-ΣOY  
Ref. *SNG Copenhagen*, 167; *Malloy*, 45a; *Kabadüz*, 1; *Samsun*, 172-84; *Sivas*, 34-50.
31. AE. 12 h, 20/21 mm, 6.42 gr., Inv. No. 26610 *Rev.* same as above; [AMI]-ΣOY
32. AE. 12 h, 20 mm, 6.60 gr., Inv. No. 26611 *Rev.* same as above; [AMI]-ΣO[Y]
33. AE. 12 h, 20 mm, 7.1 gr., Inv. No. 5990 *Rev.* same as above; [A]MI-Σ[OY]
- 34\*. AE. 12 h, 22/23 mm 7.2 gr., Inv. No. 6024 *Rev.* same as above; [AM]I - Σ[OY]
35. AE. 12 h, 19 mm, 8.18 gr., Inv. No. 26614 *Rev.* same as above; [A]MI-ΣOY
36. AE. 12 h, 21 mm, 6.2 gr., Inv. No. 11719 *Rev.* to l., mon. 4; to r., mon. 11; AMI-Σ[OY]  
Ref. *Malloy*, 45k; *SNG BM Black Sea*, 1177-79; *Kabadüz*, 19; *Samsun*, 241-57; *Sivas*, 55-142.
- 37\*. AE. 12 h, 21 mm, 7.00 gr., Inv. No. 20728 *Rev.* same as above; AMI-ΣOY
38. AE. 1 h, 21 mm, 7.0 gr., Inv. No. 8429 *Rev.* same as above; [A]MI-ΣOY
39. AE. 12 h, 23 mm, 6.77 gr., Inv. No. 448 *Rev.* same as above; AMI-Σ[OY]
- 40\*. AE. 12 h, 20/21 mm, 7.9 gr., Inv. No. 11716 *Rev.* to l., mon. 12; to r. mon. 11; AMI-ΣO[Y]; Ref. *SNG Copenhagen*, 171; *SNG v. Aulock*, *Nachträge*, 6725; *Malloy*, 45o; *SNG BM Black Sea*, 1182; *Kabadüz*, 7; *Samsun*, 277; *Sivas*, 311-325.
- 41\*. AE. 12 h, 20/21 mm, 6.0 gr., Inv. No. 10283 *Rev.* to l., mon. 11; to r., mon. 10; [A]MI-ΣOY; Ref. *Malloy*, 45l; *SNG BM Black Sea*, 1188; *Kabadüz*, 11-12; *Sivas*, 389-410.
- 42\*. AE. 12 h, 20/21 mm, 6.34 gr., Inv. No. 24756 *Rev.* to l., mon. 9; to r., mon. 13; [A]MI-ΣOY Ref. *SNG Copenhagen*, 172; *Malloy*, 45v; *Kabadüz*, 18; *Samsun*, 281; *SNG BM Black Sea*, 1190; *Sivas*, 457-96.
- 43\*. AE. 12 h, 21 mm, 6.3 gr., Inv. No. 8417 *Rev.* to r., mon. 13; [AMI]-ΣOY; Ref. *Malloy*, 45e; *Kabadüz*, 50; *Samsun*, 232-3; *Sivas*, 497-506.
44. AE. 12 h, 20/21 mm, 7.6 gr., Inv. No. 5571 *Rev.* to r., same as above; [A]MI-ΣOY
45. AE. 12 h, 22 mm, 6.32 gr., Inv. No. 23653 *Rev.* to r., mon. 11; [AMI]-ΣOY; Ref. *Kabadüz*, 32; *Samsun*, 211-31; *Sivas*, 184-287.
46. AE. 12 h, 21 mm, 6.4 gr., Inv. No. 12545 *Rev.* same as above; [AMI]-ΣOY
47. AE. 12 h, 19 mm, 7.1 gr., Inv. No. 8416 *Rev.* same as above; AMI-ΣOY
- 48\*. AE. 12 h, 19/21 mm, 7.3 gr., Inv. No. 5804 *Rev.* same as above; [A]MI-ΣOY
49. AE. 1 h, 20/21 mm, 7.7 gr., Inv. No. 6026 *Rev.* same as above; [AMI]-ΣOY
50. AE. 12 h, 21/22 mm, 6.8 gr., Inv. No. 5992 *Rev.* to l., mon. ? ; AMI-ΣOY

Obv. Head of Dionysos r.

Rev. Thyrsos; AMI-ΣΟΥ

Ref. *Malloy*, 27g.

51\*. AE. 12 h, 17 mm, 3.75 gr., Inv. No. 1836 Rev. below l., mon. 12; AMI-ΣΟΥ

Obv. Head of Mithradates VI as Dionysos r., wreathed in ivy.

Rev. Cista mystica, on which panther skin, and thyrsos; below, AMIΣΟΥ

52. AE. 12 h, 22 mm, 6.8 gr., Inv. No. 4632 Rev. No monogram. Ref. *Malloy*, 26a; *SNG BM Black Sea*, 1199-1200; *Kabadüz*, 117.

53\*. AE. 12 h, 20/21 mm, 7.02 gr., Inv. No. 20729 Rev. to l., mon. 14

54\*. AE. 12 h, 20/21 mm, 7.52 gr., Inv. No. 28752 Rev. to l., mon. 15; Ref. *Malloy*, 26b; *Kabadüz*, 123.

55. AE. 12 h, 21/22 mm, 8.0 gr., Inv. No. 11715 Rev. same as above.

56. AE. 12 h, 20 mm, 7.1 gr., Inv. No. 5570 Rev. to l., mon. 16; Ref. *Malloy*, 26c; *SNG BM Black Sea*, 1205-7; *Kabadüz*, 124.

57. AE. 12 h, 22 mm, 8.0 gr., Inv. No. 8428 Rev. same as above.

58. AE. 12 h, 20/21 mm, 8.7 gr., Inv. No. 11713 Rev. same as above.

Obv. Head of Perseus r., in helmet with griffin crest.

Rev. Pegasus drinking l., below, AMIΣΟΥ; mon. illegible.

Ref. *SNG Copenhagen*, 158-159; *SNG v. Aulock*, 62; *SNG v. Aulock, Nachträge*, 6718; *Malloy*, 33; *Kabadüz*, 145-146; *SNG BM Black Sea*, 1212-17.

59\*. AE. 12 h, 22/23 mm, 11.55 gr., Inv. No. 1685

Obv. Head of Zeus r., laur.

Rev. Eagle l., on thunderbolt, below AMIΣΟΥ

60\*. AE. 12 h, 20 mm, 6.9 gr., Inv. No. 8423 Rev. to l., mon. 17; AMIΣ[ΟΥ]  
Ref. *Malloy*, 14a; *Kabadüz*, 141; *SNG BM Black Sea*, 1221.

61. AE. 12 h, 19/20 mm, 7.3 gr., Inv. No. 3063 Rev. same as above.

62\*. AE. 12 h, 20 mm, 7.7 gr., Inv. No. 12544 Rev. to l., mon. 18; [AM]I-ΣΟΥ  
Ref. *Kabadüz*, 140; *SNG BM Black Sea*, 1227.

63. AE. 12 h, 20 mm, 7.10 gr., Inv. No. 20732 Rev. same as above

64\*. AE. 11 h. 20/21 mm, 9.00 gr., Inv. No. 14959 Rev. to l., mon. 19; Ref. *Kabadüz*, 141; *SNG BM Black Sea*, 1221.

65. AE. 12 h, 19 mm, 8.38 gr., Inv. No. 20029 Rev. to l., mon. ?; AMIΣΟΥ

66. AE. 12 h, 21 mm, 7.3 gr., Inv. No. 11718 Rev. to l., mon. ?; AMIΣΟ[Y]

**Cabeira****c. 85-65 B.C. Reign of Mithradates VI Eupator**

Obv. Aegis.

Rev. Nike r., holding palm; KABH-P[ΩN]

Ref. *SNG v. Aulock*, 95-6; *SNG BM Black Sea*, 1245; *Kabadüz*, 165; *Samsun*, 318-9; *Sivas*, 575-586.

67\*. AE. 12 h, 22/23 mm, 7.5 gr., Inv. No. 11728

**Chabacta****c. 100-85 B.C. Reign of Mithradates VI Eupator**

Obv. Aegis.

Rev. Nike r., holding palm; above r., star and crescent, below r., mon. 3; [X]ABA-KT[ΩN]

Ref. *SNG Copenhagen*, 207; *SNG v. Aulock, Nachträge*, 6753; *SNG BM Black Sea*, 1255; *Kabadüz*, 152; *Sivas*, 588-590.

68\*. AE. 12 h, 20 mm, 7.6 gr., Inv. No. 5572

**Comana****c. 85-65 B.C. Reign of Mithradates VI Eupator**

Obv. Aegis.

Rev. Nike r., holding palm, to r., mon. 11; [KOMA]-NΩN

Ref. *SNG v. Aulock*, 123; *Sivas*, 611-620.

69\*. AE. 12 h, 20 mm, 6.9 gr., Inv. No. 11725

**PAPHLAGONIA****Amastris****Mid. 3<sup>rd</sup> cent. B.C.**

Obv. Head of Athena r., in Attic helmet, star on crown.

Rev. Owl l., on thunderbolt; above l., mon. 20; below, AMAΣΤΡΠΕΩN

Ref. *SNG v. Aulock*, 153; *SNG v. Aulock, Nachträge*, 6801; *SNG BM Black Sea*, 1306.

70\*. AE. 12 h, 21 mm, 6.8 gr., Inv. No. 3309

**c. 85-65 B. C. Reign of Mithradates VI Eupator**

Obv. Aegis.

Rev. Nike r., holding palm; AMAΣ-TPEΩΣ

71. AE. 12 h, 21/22 mm, 8.1 gr., Inv. No. 6025 Rev. [AMAΣ]-TPEΩ[Σ]



Ref. *SNG Copenhagen*, 246; *SNG v. Aulock, Nachträge*, 6085; *SNG Tübingen*, 2078; *SNG BM Black Sea*, 1316-18; *Kabadüz*, 169; *Samsun*, 338-57; *Sivas*, 628-661.

72\*. AE. 12 h, 22 mm, 7.9 gr., Inv. No. 11727 Rev. to l., mon. 21; ΑΜΑΣ–ΤΡΕ[ΩΣ]

Ref. *Kabadüz*, 173; *Samsun*, 358-9; *Sivas*, 662-674.

73. AE. 12 h, 19/20 mm, 7.5 gr., Inv. No. 11726 Rev. same as above; ΑΜΑΣ–ΤΡΕ[ΩΣ]

## Sinope

### c. 125-100 B.C. Reign of Mithradates VI Eupator

Obv. Winged head of youth, r.

Rev. Cornucopiae between two plei, above stars; ΣΙΝΩ–ΠΗΣ

Ref. *SNG v. Aulock*, 230-1; *SNG v. Aulock, Nachträge*, 6869-70; *SNG BM Black Sea*, 1520-22.

74\*. AE. 12 h, 17 mm, 4.0 gr., Inv. No. 11723

### c. 100-85 B.C. Reign of Mithradates VI Eupator

Obv. Head of Zeus r., laureate.

Rev. Eagle on thunderbolt r., head reversed; below ΣΙΝΩΠΗΣ

Ref. *SNG Copenhagen*, 302; *SNG v. Aulock*, 229; *SNG v. Aulock, Nachträge*, 6866; *SNG BM Black Sea*, 1526-27.

75\*. AE. 12 h, 27/29 mm, 19.8 gr., Inv. No. 11722

### c. 85-65 B.C. Reign of Mithradates VI Eupator

Obv. Head of Athena Parthenos r.

Rev. Perseus l., holding Medusa's head and harpa; at feet the winged body of Medusa.

76. AE. 12 h, 31 mm, 18.2 gr., Inv. No. 11721 Rev. ΣΙΝ–ΩΠΗΣ

Ref. *Kabadüz*, 185; *Samsun*, 368-70; *Sivas*, 684-688; *SNG BM Black Sea*, 1531-33.

77\*. AE. 12 h, 30 mm, 17.9 gr., Inv. No. 8491 Rev. to r., mon. 9; ΣΙΝΩ–ΠΗΣ

Obv. Aegis.

Rev. Nike r., holding palm; ΣΙΝ–ΩΠΗΣ

78. AE. 12 h, 22/23 mm, 7.8 gr., Inv. No. 11724 Rev. [ΣΙ]ΝΩ–ΠΗΣ; Ref. *Kabadüz*, 176; *Sivas*, 700-702.

79\*. AE. 12 h, 20/21 mm, 7.07 gr., Inv. No. 425 Rev. to r., mon. 22; [ΣΙ]Ν–ΩΠΗΣ

Ref. *Kabadüz*, 179; *Samsun*, 38387-91; *Sivas*, 703-27.

**Bosporus or Pontus (Uncertain)**

Obv. Bowcase, above l., cmk: helmet.

Rev. Star with eight rays, to r., bow.

Ref. *SNG Copenhagen*, 230-1; *SNG BM Black Sea*, 976.

80\*. AE. 12 h, 19 mm, 10.9 gr., Inv. No. 5740

Obv. Leather cap, to l., cmk: gorgoneion; to r., cmk: helmet; below cmk: thunderbolt.

Rev. Star with eight rays, small crescent (illegible).

Ref. *SNG Copenhagen*, 232; *Lindgren*, 61; *SNG BM Black Sea*, 977-980 (different cmk.).

81\*. AE. 12 h, 23 mm, 20.1 gr., Inv. No. 5796

Hüseyin Köker (M.A.)

İstanbul Üniversitesi, Edebiyat Fakültesi

Tarih Bölümü

34134 - İstanbul / Türkiye

huseyinkoker@yahoo.com

## Burdur Müzesi'ndeki Karadeniz Bölgesi Sikkeleri

Burdur Arkeoloji Müzesi sikke koleksiyonu 81 adet Pontos Bölgesi sikkesi içermektedir. Bu sikkelerin satın alınma yoluyla müze koleksiyonuna dahil edilmesi dolayısıyla sikkelerin buluntu yerleri hakkında herhangi bir bilgiye, ne yazık ki, sahip değiliz. Katalogda şu kentler sikkeleriyle temsil edilmektedir: Khersonnesos: Pantikopaion (1), Thrakia: Byzantion (1), Byzantion-Kalkhedon (1); Pontos: Amaseia (2), Amisos (61), Kabeira (1), Khabakta (1), Komana (1); Paphlagonia: Amastris (4) ve Sinope (6). Ayrıca, iki adet de darp-hanesi belli olmayan Bosporos veya Pontos bölgesi sikkesi bulunmaktadır.

İncelenen sikkelerin dördü hariç (Kat. No. 1-3, 70) tümü VI. Mithradates Eupator'un egemenliği zamanında (MÖ. 120-63) Pontos ve Paphlagonia kentleri tarafından darp edilen sikkeleridir. Bu sikkelerin 17 adedi (Env. No. 11711-11719 ve 11721-11728), kondisyonlarının aynı olması ve müzeye geliş tarihi ile satın alınan kişinin aynı olması nedeniyle muhtemel bir definenin parçaları gibi görünmektedir. Ancak bunlar define veya bir definenin parçası olarak değil, katalog içinde değerlendirilmiştir. Pantikapeion, Byzantion, Byzantion-Kalkhedon ve Amastris kentlerine ait olan dört sikke (Kat. No. 1-3, 70) MÖ. 5. ve 4. yüzyıllar arasına tarihlenirken, tanımlanamayan ve oldukça nadir olan iki sikke ise MÖ. 2.-1. yüzyıllar arasına tarihlenmektedir.

Koleksiyonda VI. Mithradates Eupator dönemine tarihlenen 75 adet sikke bulunmaktadır ve bunlar şu kentler ile temsil edilmektedir: Amaseia (2), Amisos (61), Kabeira (1), Khabakta (1), Komana (1), Amastris (3) ve Sinope (6). Tüm bu kentler arasında Amisos kenti sikkeleri büyük çoğunluğu oluştururken, bu kenti Sinope ve Amastris kentleri izlemektedir. Daha önce yapılan araştırmalar da aynı sonucu göstermektedir. Bu da açıkça göstermektedir ki, VI. Mithradates Eupator döneminde Pontos ve Paphlagonia kentleri arasında en yoğun darbu Amisos kenti yapmıştır.

Katalogdaki VI. Mithradates Eupator dönemi sikkeleri üç farklı birimde darp edilmişlerdir: Obol (Genç erkek başı-Sadak, Zeus başı-Şimşek demeti üzerinde kartal, Athena başı-Perseus), dikhalkos (Kanatlı başlıklı genç başı-İki pileus arasında cornucopia, Eros başı-Sadak, Dionysos başı-Thyrsos) ve tetrachalkos (Ares başı-Kını içinde kılıç, Aegis-Nike, Dionysos başı-Thyrsos,

Mithradates başı-Cista mystica, Perseus başı-Pegasos, Zeus başı-Şimşek demeti üzerinde kartal). Tetrakhalkos birimi diğer birimler arasında %70'lik bir oranla en fazla görülen birimdir. Bu birimi %13'lük oran ile dikhalkos ve %11'lik bir oran ile obol birimleri izlemektedir.

Katalog no. 26'daki Ares-kın içinde kılıç tipli sikkenin arka yüzünde, sağ üst kısmının silik olması nedeniyle burada yer alması muhtemel, 'IB' harfleri ya da bir monogram görülememektedir. Aynı sikkenin arka yüzünün sol alt kısmında yer alan monogramın (mon. 8) sadece bir kısmı görünmektedir. Bununla birlikte, sikkenin sağ alt kısmında yer alan monogram (mon. 7) ve referanslarda verilen örnekler göz önüne alındığında bu monogramın, *Malloy*, 32e ve *Kabadüz*, sayfa 59-60'daki 76-85 numaralı sikkelerdeki gibi olması muhtemeldir. Katalog no. 40'daki Aegis-Nike tipli Amisos sikkesinin arka yüzünde sağda yer alan monogramın (mon. 11) çok az bir kısmı görülebilmesine rağmen, sikke tipi ve soldaki monogram göz önüne alındığında bu monogram, *Sivas*, sayfa 45-6'daki no. 311-325'dekiler gibi olmalıdır. Aynı tipi taşıyan bir başka Amisos sikkesinin (no. 42) arka yüzünde soldaki monogram da (mon. 9), yalnızca sağ yarısı yani "E" hafi görüldüğü halde *Sivas*, sayfa 51-3'deki no. 457-96'dakiler gibi olmalıdır. Zeus başı-Yıldırım demeti üstünde kartal tipli başka bir Amisos sikkesinde (no. 62), arka yüzde yer alan monogramın (mon. 18) ancak yarısı okunabilmesine rağmen, bu monogramın *Kabadüz*, sayfa 63 no 140'daki monogram gibi olmalıdır. Katalog no. 77'de Athena başı-Perseus tipli Sinope sikkesinin arka yüzünde yer alan monogram (mon. 9), referanslarda belirtilen örneklerin aksine sağda bulunması bakımından dikkat çekicidir.

## Abbreviations and Bibliography

- BMC**  
1877 R. Stuart Poole, *Catalogue of the Greek Coins. The Tauric Chersonese, Sarmatia, Dacia, Moesia, Thrace, & c.*, London.
- Kabadüz**  
1994 M.T. Göktürk – S.S. Cebesoy, “Kabadüz Definesi”, *Anadolu Medeniyetleri Müzesi 1993 Yılı*: 54-82.
- Lindgren**  
1985 Lindgren, H. C. -F.L. Kovacs, *Ancient Bronze Coins of Asia Minor and the Levant from the Lindgren Collection*, California.
- Malloy**  
1970 Malloy, A.G., *The Coinage of Amisus*, New York.
- Samsun**  
1997 Travaglini, A., “Samsun (Amisos) 1989”, *Museo di İzmir I. Ripostigli di Monete Greche*, Milano: 149-163 (Pl. LI-LXVIII).
- Schönert-Geiss**  
1970 Schönert-Geiss, E. *Die Münzprägung von Byzantion Teil I: Autonome Zeit*, Berlin.
- Sivas**  
1999 O. Tekin, *The Sivas Hoard. Bronze Coins of Pontos and Paphlagonia from the Reign of Mithradates VI*, İstanbul.
- SNG BM Black Sea**  
1993 *Sylloge Nummorum Graecorum. Vol. IX. The British Museum. Part 1: The Black Sea*, London.
- SNG Copenhagen**  
1944 *Sylloge Nummorum Graecorum. The Royal Collection of Coins and Medals. Danish National Museum. Bosphorus-Bithynia*, Copenhagen.
- SNG Cop. Thrace**  
1942 *Sylloge Nummorum Graecorum. The Royal Collection of Coins and Medals. Danish National Museum. Thrace, Part 1: The Tauric Chersonese-Thrace: Mesembria*, Copenhagen.
- SNG München**  
1985 *Sylloge Nummorum Graecorum. Deutschland. Staatliche Münzsammlung München, Heft 7*, Berlin.
- SNG Tübingen**  
1985 *Sylloge Nummorum Graecorum. Deutschland. Münzsammlung der Universität Tübingen. 3. Heft. Akarnanien-Bithynien*, Berlin.
- SNG v. Aulock**  
1957 *Sylloge Nummorum Graecorum. Deutschland. Sammlung H. von Aulock. Pontus-Paphlagonien- Bithynien*, Berlin.
- SNG v. Aulock, Nachträge**  
1967 *Sylloge Nummorum Graecorum. Deutschland. Sammlung H. von Aulock. Nachträge I. Pontus-Paphlagonien-Bithynien*, Berlin.



1



2



3



4



5



6



7



8



9



10



11



12



13



14



15



16



17



18



19



20



21



22





28 (20727)



34 (6024)



37 (20728)



40 (11716)



41 (10283)



42 (24756)



43 (8417)



48 (5804)



51 (1836)



53 (20729)



54 (28752)



59 (1685)



60 (8423)



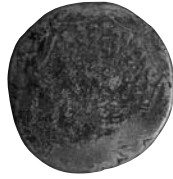
62 (12544)







64 (12544)



67 (11728)



68 (5572)



69 (11725)



70 (3309)



72 (11727)



74 (11723)



75 (11722)



77 (8491)



79 (425)



80 (5740)



81 (5796)



