

The 2011 Season at Oluz Höyük: New Results and Evaluations

Amasya province is located in the North-Central Anatolia and Oluz Höyük is found within the borders of Gökhöyük Agricultural Operation Management on the twenty-seventh kilometer of Amasya-Çorum highway road. Oluz Höyük lies in the fertile Geldingen plains watered by River Çekerek, an important tributary to Yeşilırmak, flowing south of the Höyük. Oluz Höyük lies 2 km northwest of Gözlek Village, about 5 km east of Toklucak (former Oluz) Village and 3 km south of Amasya-Çorum highway road. The mound measures 280 x 260 m; rises about 15 m above the plain level (478.78 m above the sea level); and thus covers an area of *ca.* 45,000 m².

The 2011 campaign at Oluz Höyük was conducted in three stages:

1st Stage – Archaeogeophysical Surveys: As constructional materials of architecture buried under the soil have different properties than the soil, geophysical surveying has found wide spread use in archaeological works. In the recent years geophysical methods are extensively used to compile information about the remains buried at archaeological sites. Equipment and software have advanced so much recently in parallel to the increasing demand for obtaining quick results for shallow depths. Asst. Prof. Dr. Fethi Ahmet Yüksel and Mehmet Şafi Yıldız carried out geomagnetic and geoelectric surveys covering an area of 7400 m². The work lasted 25 and 29 July 2011. The aim was to obtain data regarding possible building remains with their depths, extensions and locations.

2nd Stage – Archaeozoology Surveys: Vedat Onar conducted on zoological remnants from Oluz Höyük. The work lasted from 1 and 25 August 2011.

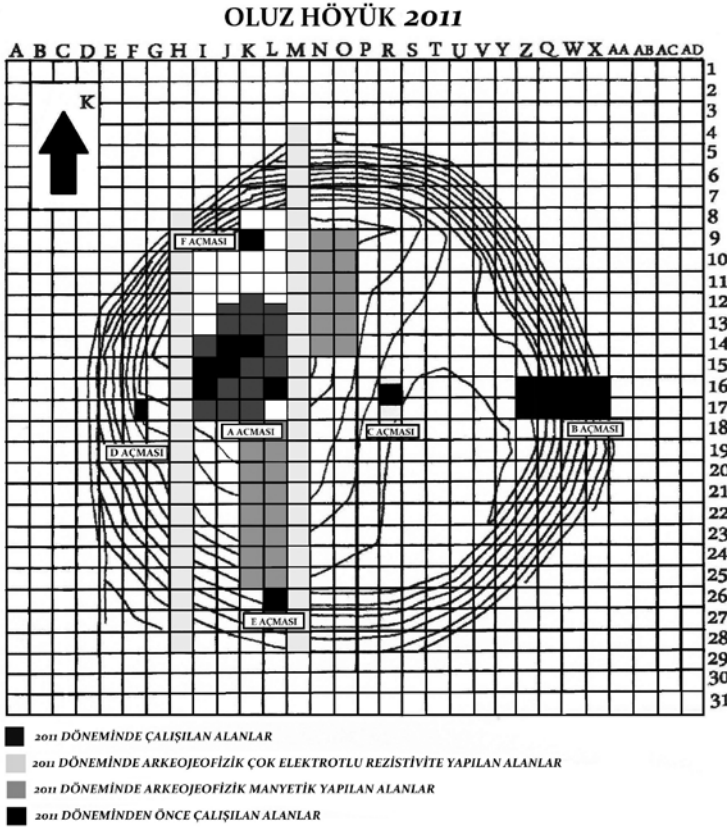
3rd Stage – Archaeological Excavations: Excavations at Oluz Höyük were conducted at Trench A.

Consequently, 9 architectural layers were detected in 2007-2010 excavations of Oluz Höyük, carried out in six trenches (A, B, C, D, E and F) in a 2500 m² field. First four layers of trenches A and B were determined to be contemporary, particularly from evaluations on coins and potsherds. Additionally, 3rd Architectural Layer of Trench C was detected to be the contemporary of the 3rd layers of trenches A and B. In this context, 0 layer

of Oluz Höyük can be dated to Medieval Age, 1st Layer to Hellenistic Period (200 BC - 47 BC), 2A Layer to Late Phase of Late Iron Age (300 BC - 200 BC), 2B Layer to Late Phase of Late Iron Age (425 BC - 300 BC), 4A Layer to Early Phase of Late Iron Age (550 BC - 500 BC) and 4B Layer to Early Phase of Late Iron Age (600 BC - 550 BC). 5th and 6th Architectural Layers, detected in Trench B, were understood to date to 7th and 8th centuries BC respectively. 7th Architectural Layer (15th and 14th centuries) and 8th Architectural Layer (13th century) belong to Late Bronze Age, i.e. Hittite Empire Period. 9th Architectural Layer dates roughly to Early Bronze Age, (4th and 3rd Millennium BC) especially evaluating potsherds and flints.



Harita



Topografik plan



Res. 1 Hava Fotoğrafi, Güneydoğudan, Oluz Höyük



Res. 2 Hava Fotoğrafi, A Açması, Oluz Höyük



Res. 3
Arkeojeofizik Çalışmaları,
Oluz Höyük



Res. 4
Mimari Kalıntılar,
1. Mimari Tabaka,
A Açması, Oluz Höyük



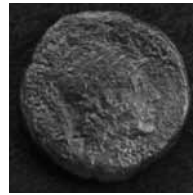
Res. 5a-b Sikke, Tunç, 0 Tabakası, Oluz Höyük



Res. 6 a-b Sikke, Tunç, 1. Mimari Tabaka,
Oluz Höyük



Res. 7 a-b Sikke, Tunç, 1. Mimari Tabaka,
Oluz Höyük



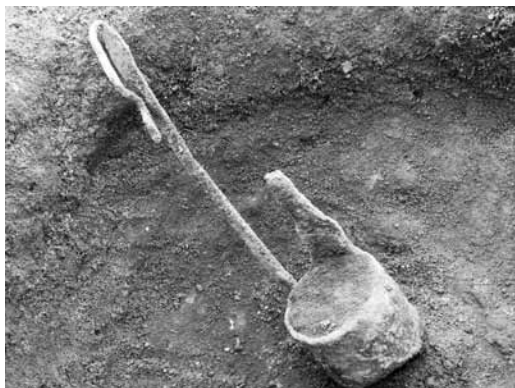
Res. 8 a-b Sikke, Tunç, 1. Mimari Tabaka,
Oluz Höyük



Res. 9
Mimari Kalıntılar,
2A Mimari Tabakası,
A Açması, Oluz Höyük



Res. 10
Mimari Kalıntılar,
2A Mimari Tabakası,
A Açması, Oluz Höyük



Res. 11 Bothros, 2A Mimari Tabakası,
A Açması, Oluz Höyük



Res. 12 a-b
Kepçe, Tunç,
2A Mimari
Tabakası,
Oluz Höyük



Res. 13 Bothros, 2A Mimari Tabakası,
A Açması, Oluz Höyük



Res. 14 a-b
Boğa Başı Biçimli Dinsel Tören Kabı,
Pt, 2A Mimari Tabakası, Oluz Höyük



Res. 15
Yavru Domuz
Kafatasları,
2A Mimari Tabakası,
A Açması, Oluz Höyük



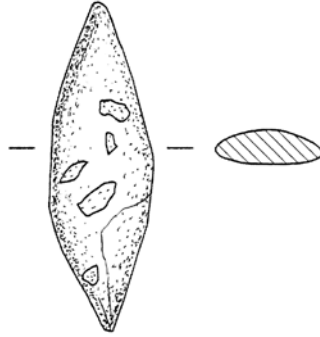
Res. 16
Kalypter, Pt,
2A Mimari Tabakası,
Oluz Höyük



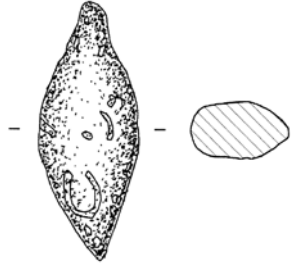
Res. 17
Astragalos, Kemik,
2A Mimari Tabakası,
Oluz Höyük



Res. 18 Fibula, Tunç, 2A Mimari
Tabakası, Oluz Höyük



OLZ-11-78
0 3 cm



OLZ-11-70
0 3 cm

Res. 19 a-b
Sapan Tanesi, Tunç,
2A Mimari Tabakası,
Oluz Höyük

Res. 20 a-b Sapan Tanesi, Tunç, 2A Mimari Tabakası,
Oluz Höyük



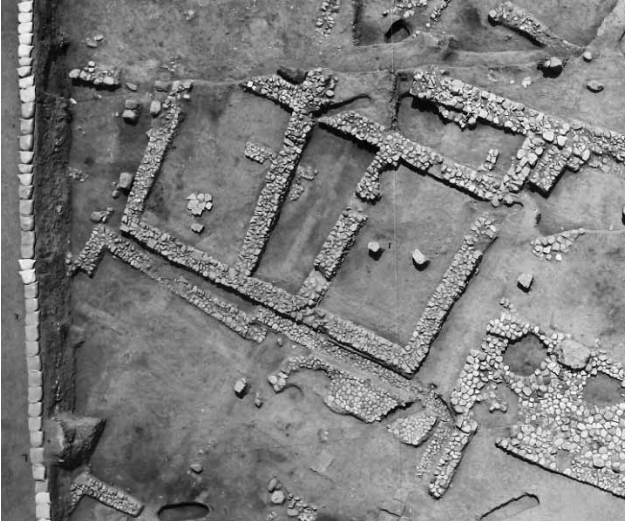
Res. 21
Taş Döşemeli Yol,
2B Mimari Tabakası,
A Açması,
Oluz Höyük



Res. 22
Malikane Yapısı
Ön Birimler,
2B Mimari Tabakası,
A Açması,
Oluz Höyük



Res. 23
Malikane Yapısı
Giriş Bölümü,
2B Mimari Tabakası,
A Açması,
Oluz Höyük



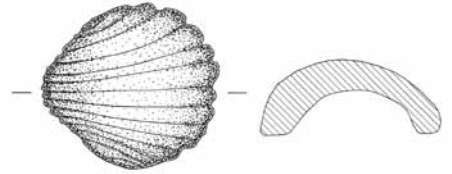
Res. 24
Malikane Yapısı
Ön Birimler,
2B Mimari Tabakası,
A Açması,
Oluz Höyük



Res. 25 a-c
Phiale, Pt,
2B Mimari Tabakası,
Oluz Höyük



Res. 26 Krater, Pt, 2B Mimari Tabakası,
Oluz Höyük



OLZ-11-295

0 3 cm

Res. 27a-b İstiridye Kabuğu Biçimli
Kozmetik Kutusu Kapağı ya
da Ağırılık, Tunç, 2B Mimari
Tabakası, Oluz Höyük



Res. 28 a-b
Basit Toprak Mezar (Sk. 62),
A Açması, Oluz Höyük



Res. 29 Küpe, Tunç, Basit
Toprak Mezar
(Sk. 62), A Açması,
Oluz Höyük



Res. 30 Küpe, Tunç, Basit
Toprak Mezar
(Sk. 62), A Açması,
Oluz Höyük



Res. 31 Fibula, Tunç, Basit
Toprak Mezar
(Sk. 62), A Açması,
Oluz Höyük



Res. 32
Mimari Kalıntılar, 4. Mimari
Tabaka, A Açması, Oluz Höyük



Res. 34
Amulet, Kemik,
4. Mimari Tabaka,
Oluz Höyük



Res. 33
Mimari Kalıntılar,
4. Mimari Tabaka,
A Açması, Oluz Höyük