



Geliş(Received) : 11.06.2013
Kabul(Accepted): 21.10.2013

Araştırma Makalesi

The powdery mildews of Kıbrıs Village Valley (Ankara, Turkey)

Tuğba EKİCİ¹, Makbule ERDOĞDU²,
Zeki AYTAÇ¹, Zekiye SULUDERE¹

¹Gazi University, Faculty of Science,
Department of Biology, Teknikokullar, Ankara-TURKEY
²Ahi Evran University, Faculty of Science and Literature,
Department of Biology, Kırşehir-TURKEY

Abstract: A search for powdery mildews present in Kıbrıs Village Valley (Ankara, Turkey) was carried out during the period 2009-2010. A total of ten fungal taxa of powdery mildews was observed: *Erysiphe alphitoides* (Griffon & Maubl.) U. Braun & S. Takam., *E. buhrii* U. Braun, *E. heraclei* DC., *E. lycopsidis* R.Y. Zheng & G.Q. Chen, *E. pisi* DC. var. *pisi*, *E. pisi* DC. var. *cruchetiana* (S. Blumer) U. Braun, *E. polygoni* DC., *Leveillula taurica* (Lév.) G. Arnaud, *Phyllactinia guttata* (Wallr.) Lév. and *P. mali* (Duby) U. Braun. They were determined as the causal agents of powdery mildew on 13 host plant species. *Rubus sanctus* Schreber. for *Phyllactinia mali* (Duby) U. Braun is reported as new host plant. Microscopic data obtained by light and scanning electron microscopy of identified fungi are presented.

Key words: *Erysiphales*, New host, Taxonomy, Turkey

Kıbrıs Köyü Vadisi' nin (Ankara, Türkiye) Külleme Mantarları

Özet: Kıbrıs Köyü Vadisi' nde (Ankara, Türkiye) bulunan külleme mantarlarının araştırılması 2009-2010 yıllarında yapılmıştır. Külleme mantarlarına ait toplam 10 taxa tespit edilmiştir: *Erysiphe alphitoides* (Griffon & Maubl.) U. Braun & S. Takam., *E. buhrii* U. Braun, *E. heraclei* DC., *E. lycopsidis* R.Y. Zheng & G.Q. Chen, *E. pisi* DC. var. *pisi*, *E. pisi* DC. var. *cruchetiana* (S. Blumer) U. Braun, *E. polygoni* DC., *Leveillula taurica* (Lév.) G. Arnaud, *Phyllactinia guttata* (Wallr.) Lév. ve *P. mali* (Duby) U. Braun. 13 konukçu bitki üzerinde külemeye sebep olan ajan tespit edilmiştir. *Rubus sanctus* türü *Phyllactinia mali* için yeni konukçu olarak kaydedilmiştir. Teşhis edilmiş mantarların ışık ve taramalı elektron mikroskobuna dayalı morfolojik verileri sunulmuştur.

Anahtar Kelimeler: *Erysiphales*, Yeni konukçu, Taksonomi, Türkiye

Introduction

The powdery mildews (*Erysiphales*) are one of the most conspicuous and most studied groups of plant pathogens currently comprising 873 recognized species infecting more than 1500 plant genera (Amano 1986; Braun and Cook 2012). The taxonomy and identification of

different powdery mildew taxa were based largely on their host range and the morphological characteristics of their ascomata formerly known as cleistothecia, but recently re-named as chasmothecia (Braun et al. 2002).

Corresponding author: merdogdu@ahievran.edu.tr



This causes problem when a powdery mildew increases its host range or geographical area, because the teleomorph may not be formed for some years, or may even not be produced at all (Cook et al. 1997). So, the classical morphological criteria and host range data have been supplemented with additional taxonomic features such as scanning electron microscope (SEM) studies of conidial surfaces. In addition, the discovery of additional features based on SEM has provided useful support for identification purposes when crucial characters are not clear only using LM (Cook et al. 1997).

This research was carried out in valley of Kibris village belonging to Mamak district which is about 20 km southeast of Ankara province. Kibris Village Valley is situated in the Irano-Turanian phytogeographic region and according to the grid square system adopted by Davis (1965-1985), it is located in the squares B4. The climate of the province is Mediterranean. Kibris Village Valley is 1st degree field of natural sites and its three areas are 1st archaeological sites. The powdery mildews on plants in Kibris Village Valley were investigated and classified in this paper. 10 taxa of powdery mildews in Kibris Village Valley are described in detail and illustrated.

Materials and methods

Plant specimens infected with powdery mildew were collected from Kibris Village Valley in Ankara province of Turkey. The host specimens were prepared according to established herbarium techniques. Host plants were identified using the Flora of Turkey and East Aegean Islands (Davis 1965-1985). The fungal specimens were isolated from the host plants by obtaining thin sections or scraping. Microscopic examination and microphotographs were done by means of a Leica DM E light microscope. A Leica EZ4D stereo microscope was used for close-up photo of the chasmothecia on the leaf surface. The powdery mildews were identified using relevant literature (Karaca 1961; Dennis 1981; Ellis and Ellis 1987;

Heluta 1989; Fakirova 1991; Braun 1995; Braun and Cook 2012). All specimens examined were deposited in the mycological collection of the Department of Biology, Faculty of Science, Gazi University, in Ankara province of Turkey.

For scanning electron microscopy (SEM), 8-10-mm-square pieces of infected leaves bearing conidia and/or chasmothecia were mounted on the SEM stubs with double-sided adhesive tape. They were coated with gold using a Polaron SC 502 Sputter Coater and were examined with a JEOL JSM 6060 scanning electron microscope operated at 5-10 kV in the Electron Microscopy Unit, Faculty of Science, Gazi University (Turkey).

Results and discussion

The Kibris Village Valley was chosen as a research area, because its climatic conditions and plant distributions are suitable for the growth of numerous microfungi. But the plants are usually completely covered by a dense dust mass caused by the activities of a stone quarries in the research area. This dust mass is a mechanical barrier for the penetration and distribution of leaf-inhabiting fungi. This was detected as a factor for decreasing fungal diversity and rate of contamination.

Ten powdery mildews were identified in the research area. Morphological data obtained by light and scanning electron microscopy of these fungi are provided. The author abbreviations of fungi are according to Kirk and Ansell (1992). The systematics of taxa follow Kirk et al. (2008) and Index Fungorum (www.speciesfungorum.org, accessed 2013). Family and species names are listed in alphabetical order in the text.

Erysiphe alphitoides (Griffon & Maubl.)

U. Braun & S. Takam., *Schlechtendalia* 4: 5. 2000.

Mycelium: amphigenous, mainly epiphyllous, in white patches or effuse, persistent on the upper leaf surface.



Conidiophores: erect, straight, rarely curved or flexuous. Conidia: ellipsoid-ovoid to doliiiform, with squared wrinkling, 20-26 10-14 μm . Chasmothecia: amphigenous, mainly epiphyllous, scattered to gregarious, 78-100 μm diam., each with multiple asci. Appendages: more or less equatorial, straight to somewhat curved, 0.5-1 times as long as the chasmothecial diam., wall almost smooth to verruculose, colourless or only pigmented at the very base, apically (3-4-6 times closely and regularly branched, branched part 35-72 μm long. Asci: broadly ellipsoid-ovoid, saccate, short-stalked, 55-62.5 37.5-45(-47.5) μm , containing (6-)8 ascospores. Ascospores: broadly ellipsoid-ovoid, colourless, guttulate, 15-22.5 (7.5-)10-12.5 μm (Fig. 1).

B4 Ankara: Kibris Village, 1100-1150 m, roadside, on *Quercus pubescens* Willd., 24.09.2009, TE 1097.

Several species of *Erysiphe* R. Hedw. ex DC. are known to infect oaks. These include *Erysiphe abbreviata* (Peck) U. Braun & S. Takam. (syn. *Microsphaera abbreviata* Peck), *E. alphitoides* (Griffon & Maubl.) U. Braun & S. Takam. (syn. *M. alphitoides* Griffon & Maubl.), *E. calocladophora* (G.F. Atk.) U. Braun & S. Takam. (syn. *M. calocladophora* G.F. Atk.), *E. epigena* S. Takam. & U. Braun, *E. extensa* (Cooke & Peck) U. Braun & S. Takam. (syn. *M. extensa* Cooke & Peck), *E. hypogena* S. Takam. & U. Braun, *E. hypophylla* (Nevod.) U. Braun & Cunningt. (syn. *M. hypophylla* Nevod.), and *E. quercicola* S. Takam. & U. Braun (Braun 1987; Braun and Takamatsu 2000; Braun et al. 2003; Braun and Cook 2012). Until now, three *Erysiphe* species including *E. abbreviata*, *E. alphitoides*, and *E. hypophylla* have been reported to cause powdery mildews on *Quercus* spp. in Turkey. *Erysiphe alphitoides* s. lat. is common, widespread in Turkey on *Quercus alba* L., *Q. cerris* L., *Q. ilex* L., *Q. infectoria* Olivier, *Q. infectoria* Olivier subsp. *boussieri* (Reuter) O. Schwarz, *Q. ithaburensis* Decne. subsp. *macrolepis* (Kotschy) Hedge & Yalt., *Q. pedunculata* Ehrb., *Q. pubescens* Willd., *Q. robur* L. subsp. *brutia* (Ten.) Schwarz (Göbelez 1963;

Tamer et al. 1990a; Braun 1995; Bahçecioğlu et al. 2006; Erdoğdu and Hüseyin 2008). *Erysiphe abbreviata* on *Quercus* sp. and *E. hypophylla* on *Q. petraea* (Mattuschka) Liebl. var. *petraea* were reported from Turkey as well (Bahçecioğlu et al. 2006; Kabaktepe and Bahçecioğlu 2006).

Erysiphe buhrii U. Braun, *Česká Mykol.* 32(2): 80. 1978.

Mycelium: amphigenous, white, dense, irregular patches or effuse. Conidiophores: straight, cylindrical, erect. Conidia: single-celled, cylindrical, ellipsoid, 23-30 9-15 μm . Conidia viewed with SEM characterized by randomly orientated reticulated wrinkling. Chasmothecia: *amphigenous*, numerous, scattered, dark brown to black, 110-150 μm diam., each with multiple asci. Appendages: numerous, 0.5-1.5 times as long as the chasmothecial diam., mycelium-like, septate, thin-walled, brown when mature, simple or irregular branched. Asci: 3-10 per ascoma, sessile or short stalked, (62.5-)65-75 (30-)32.5-35 μm , containing 3-5 ascospores. Ascospores: ellipsoid, ovoid, hyaline, 15-22.5 10-15 μm (Fig. 2).

B4 Ankara: Kibris Village, around Durhasanın Kayası, 1300 m, steppe, on *Silene pratensis* subsp. *eriocalycina* (Boiss.) Mc Neill & H.C. Prent. (*Silene eriocalycina* Boiss.), 01.08.2010, TE 1189.

E. buhrii is common on *Caryophyllaceae* throughout the world, especially Asia and Europe. It is known from Turkey on *Dianthus caryophyllus* L., *Gypsophila libanotica* Boiss., *G. paniculata* L., *Silene discolor* Sibth. & Sm., and *S. spergulifolia* (Desf.) Bieb. (Braun 1995; Bahçecioğlu and Yıldız 2005; Bahçecioğlu et al. 2006)

Erysiphe heraclei DC., *Fl. franç.*, Edn 3 (Paris)6: 107. 1815.

Mycelium: amphigenous, irregular white patches, sometimes effuse to covering the whole leaf surface. Conidiophores: straight, cylindrical. Conidia: cylindrical, oval to fusiform, 26-31 12-15 μm in size.

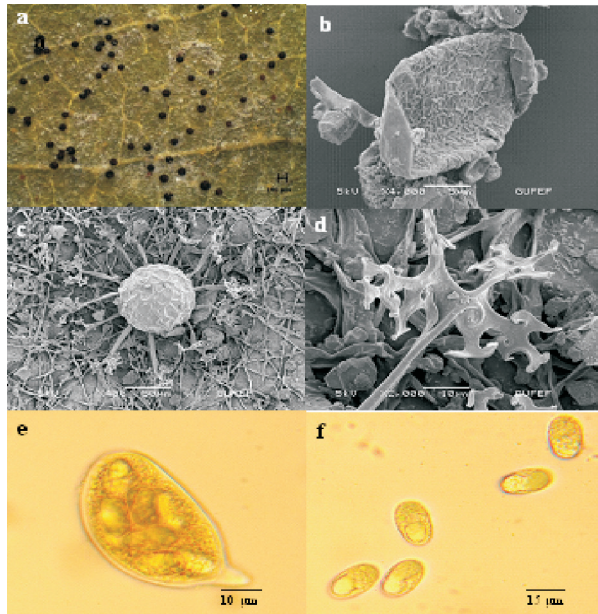


Fig. 1. *Erysiphe alphitoides*: a - general appearance of powdery mildew; b - conidia (SEM); c - chasmothecia (SEM); d - appendage (SEM); e - ascus; f - ascospores

Conidia viewed with SEM characterized by randomly orientated reticulated wrinkling. Chasmothecia: spherical, gregarious, 73-130 μm diam., each with multiple asci. Appendages: 0.5-1.5 times as long as the chasmothecial diam., myceloid with branched tips, septate, thin-walled, brown when mature. Asci: 4-6 per ascoma, sessile or short stalked, round to ovoid, 57.5-65 40-45 μm , containing 3-5 ascospores. Ascospores: ellipsoid to ovoid, hyaline, 25-27.5 12.5-15 μm (Fig. 3).

B4 Ankara: Kibris Village, around Cehrelik, 1300-1360 m, on *Falcaria vulgaris* Bernh., 01.08.2010, TE 1188.

Erysiphe heraclei was reported on several host plants belonging to *Apiaceae*. *E. heraclei* on *Falcaria vulgaris* was recorded from Austria, Bulgaria, Czechia, Slovakia, France, Germany, Hungary, Iran, Israel, Poland, Romania, Russia, Turkey, Ukraine, Yugoslavia (Amano 1986; Braun 1995).

Erysiphe lycopsidis R.Y. Zheng & G.Q. Chen, *Sydowia* 34: 234. 1981.

Mycelium: amphigenous, white, effuse, persistent or evanescent. Conidiophores:

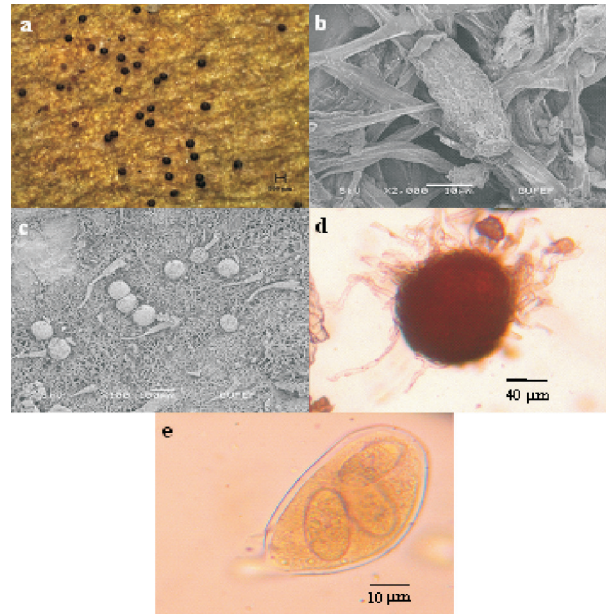


Fig. 2. *Erysiphe buhrii*: a - general appearance of powdery mildew; b - conidia (SEM); c - chasmothecia (SEM); d - chasmothecia and appendages; e - ascus and ascospores

straight, erect, cylindrical. Conidia: single-celled, ellipsoid, doliiform or cylindrical, 20-32 11-16 μm . Conidia viewed with SEM characterized by randomly orientated and reticulated wrinkling. Chasmothecia: gregarious, numerous, scattered, dark brown to black, 110-140 μm diam. Appendages: 0.5-1.5 times as long as the chasmothecial diam., mycelium-like, hyaline or brown in the lower half, septate, simple or irregular branched. Asci: 4-6 per ascoma, short stalked or sessile, 72.5-75 42.5-50 μm , containing 3-5 ascospores. Ascospores: ellipsoid, ovoid, hyaline, 15-25(-27.5) 11-15 μm (Fig. 4).

B4 Ankara: Kibris Village, around Kavak Stream, 1000 m, on *Anchusa leptophylla* Roemer & Schultes subsp. *leptophylla*, 01.08.2010, TE 1180.

Erysiphe lycopsidis infects *Anchusa altissima* Desf. in Germany, *A. arvensis* (L.) Bieb. in Austria, Denmark, France, Germany, Italy, Poland, Romania, Spain, Switzerland, United Kingdom, *A. azurea* Miller in Germany, Romania, *A. gmelinii* Ledeb. in Ukraine, *A. ochroleuca* M. Bieb. in Romania, *A. thessala* Boiss & Spruner in Ukraine, *Buglossoides arvensis* (L.) Johnston.

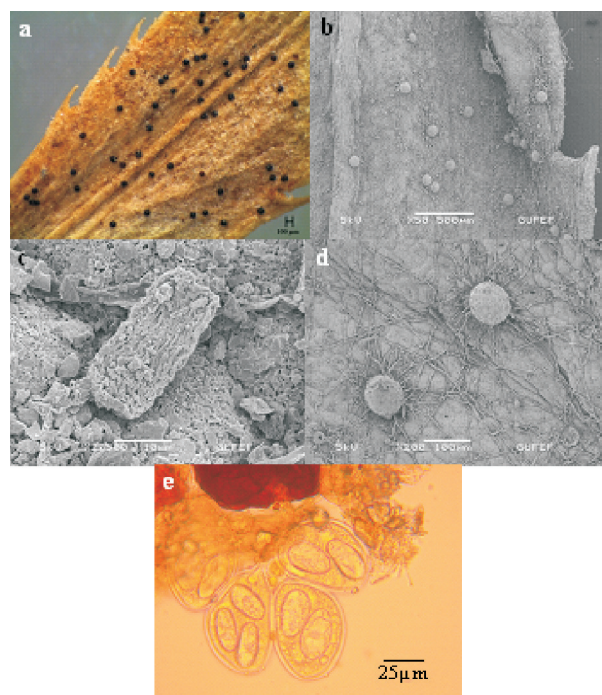


Fig. 3. *Erysiphe heraclei*: a, b - general appearance of powdery mildew; c - conidia (SEM); d - chasmothecia and appendages (SEM); e - asci and ascospores

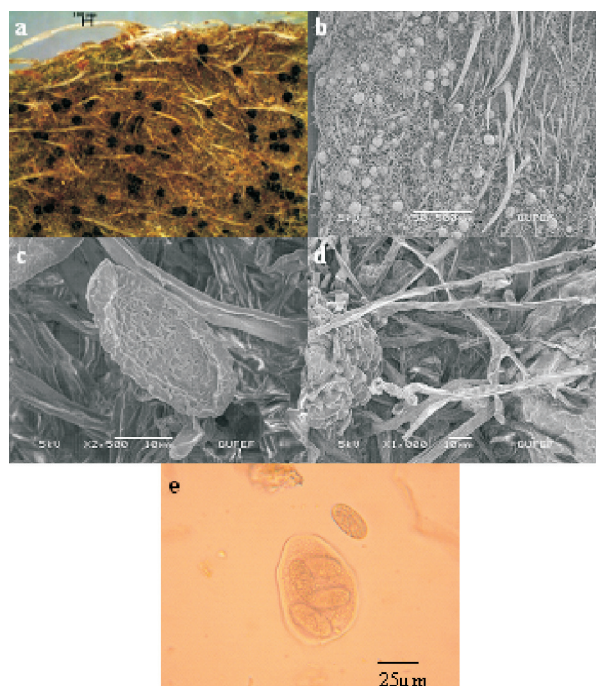


Fig. 4. *Erysiphe lycopsidis*: a, b - general appearance of powdery mildew; c - conidia (SEM); d - chasmothecia and appendages (SEM); e - ascus and ascospores

in Bulgaria, Ukraine, *Pentaglottis sempervirens* (L.) Tausch ex L.H. Bailey in Ukraine (Braun 1995), *A. arvensis* (L.) Bieb. subsp. *orientalis* (L.) Nordh. in China (Amano 1986), Romania, Ukraine (Braun 1995), *A. caespitosa* Lam. in Switzerland (Bolay 2005), *A. capensis* Thunb. in Poland (Mulencko et al. 2008), Switzerland (Bolay 2005), *A. officinalis* L. in Belarus (Girilovich et al. 2005), Bulgaria, Germany, Norway (Braun 1995), Poland (Ruszkiewicz-Michalska & Michalski 2005), Russia (Gasich & Berestetskij 1997), Switzerland (Bolay 2005), *A. ovata* in Iran (Khodaparast et al. 2000), *Echium biebersteinii* (Lacaita) Dobrocz. in Ukraine (Dudka et al. 2004), *Lithospermum arvense* L. in Poland (Mulencko et al. 2008), Ukraine (Braun 1995), *L. officinalis* L. in Russia (Rusanov and Bulgakov 2008), *Lycopsis arvensis* L. in Russia (Rusanov and Bulgakov 2008), Ukraine (Dudka et al. 2004), *L. orientalis* L. in China (Braun 1987), Ukraine (Dudka et al. 2004) and *Onosma* sp. in Ukraine (Dudka et al. 2004). It was observed on *Anchusa officinalis* L., *A.*

leptophylla Roemer & Schultes, and *Alkanna* sp. in Turkey (Braun 1995; Bahçecioğlu and Yıldız 2005; Bahçecioğlu et al. 2006).

Erysiphe pisi* DC., Fl. franç. 2: 274. 1805 var. *pisi

Mycelium: on stems and leaves, amphigenous, white, effuse, sometimes covering the whole leaf surface, persistent or evanescent. Conidiophores: straight, erect, cylindrical. Conidia: single-celled, ellipsoid to cylindrical, 23-29 12-15 µm. Surface ornamentation of conidia viewed with SEM consisting of low reticulate ridges. Chasmothecia: gregarious, numerous, scattered, dark brown to black, 75-150 µm in diam. Appendages: in the lower half, 1.5-3 times as long as the chasmothecial diam., mycelium-like, hyaline or brown, septate, simple or irregular branched. Asci: 4-8 per ascoma, short stalked or sessile, 60-75 20-30 µm in size, containing 3-6 ascospores.



Ascospores: ellipsoid, ovoid, hyaline, 22.5-30 10-17.5 μm (Fig. 5).

B4 Ankara: Kıbrıs Village, around Dipsizgöl, 1050 m, on *Medicago lupina* L., 24.09.2009, TE 1090.

Erysiphe pisi var. *pisi* was reported on several host plants belonging to *Fabaceae*. It is known from Turkey on *Arachis hypogaea* L., *Astragalus odoratus* Lam., *A. oleifolius* DC., *A. ponticus* Pall., *Lathyrus roseus* Stev., *Lathyrus* sp., *Medicago falcata* L., *M. lupina* L., *M. polymorpha* L., *M. rigidula* (L.) All., *M. sativa* subsp. *falcata* (L.) Arcangeli, *M. x varia* Martyn, *Mellilotus neapolitana* Ten ex Guss., *Phaseolus vulgaris* L., *Pisum sativum* L., *Sophora alopecurioides* L., *Trifolium ochroleucum* Huds., *T. pratense* L., *Vicia cracca* L., *V. ervilia* (L.) Willd., *V. faba* L., *V. feyniana* Bornm., *V. lutea* L., *V. noeana* Reuter ex Boiss., *V. sativa* L., and *V. tenuifolia* Roth (Braun 1995; Bahçecioğlu and Yıldız 2005; Bahçecioğlu et al. 2006; Kabaktepe and Bahçecioğlu 2006). *Erysiphe pisi* var. *pisi* on *Medicago lupina* was recorded from Austria, Czechia, Slovakia, Finland, France, Germany,

Hungary, Italy, Netherlands, Poland, Romania, Spain, Sweden, Switzerland, Turkey, United Kingdom, Yugoslavia (Braun 1995; Kabaktepe and Bahçecioğlu 2006).

Erysiphe pisi DC. var. *cruchetiana* (S. Blumer) U. Braun, *Nova Hedwigia* 34(3-4): 692. 1981.

Mycelium: amphigenous, white, effuse, sometimes covering the whole leaf surface, persistent or evanescent. Conidiophores: straight, erect, cylindrical. Conidia: single-celled, ellipsoid to cylindrical, 35-44 15-17.5 μm . Conidia: viewed with SEM characterized by randomly orientated reticulated wrinkling and end of conidium with wart-like structure. Chasmothecia: gregarious, numerous, scattered, dark brown to black, 120-150 μm diam. Appendages: in the lower half, 1-3 times as long as the chasmothecial diam., mycelium-like, hyaline or brown, septate, simple or irregular branched. Asci: 4-8 per ascoma, short stalked or sessile, 60-75 30-35 μm in size, containing 3-6 ascospores. Ascospores: ellipsoid, ovoid, hyaline, 20-25 12.5-15 μm (Fig. 6).

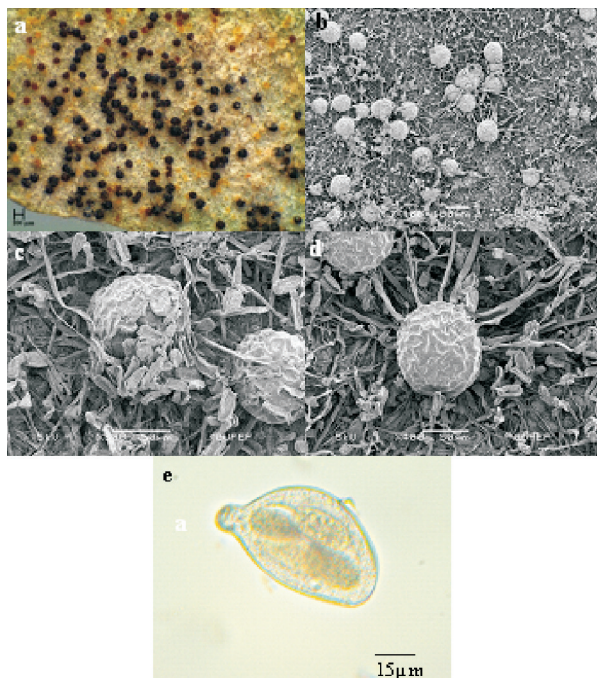


Fig. 5. *Erysiphe pisi* var. *pisi*: a, b - general appearance of powdery mildew; c - conidia (SEM); d - chasmothecia and appendages (SEM); e - ascus and ascospores

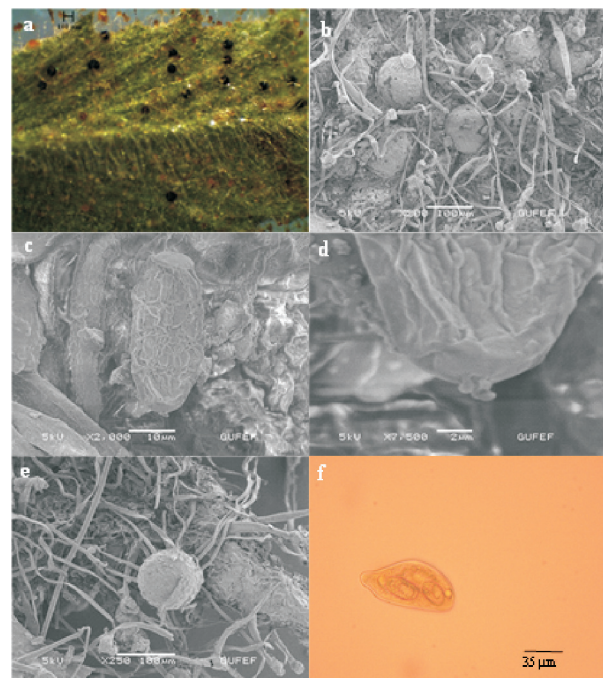


Fig. 6. *Erysiphe pisi* var. *cruchetiana*: a, b - general appearance of powdery mildew; c - conidia (SEM); d - end of conidium showed wart-like structure (SEM); e - chasmothecia and appendages (SEM); f - ascus and ascospores



B4 Ankara: Kıbrıs Village, 1000-1100 m, steppe, on *Ononis pusilla* L., 01.07.2010, TE 1185.

Braun (1995) indicated that *Erysiphe pisi* var. *cruchetiana* is distinguished from *E. pisi* var. *pisi* by frequently irregular branching chasmothecial appendage. However, he did not describe other characteristics of this variety. According to our investigations the conidia of *E. pisi* var. *cruchetiana* are bigger than those of *E. pisi* var. *pisi* conidia and wart-like structures were observed at the end of the conidia when viewed by SEM.

Erysiphe pisi var. *cruchetiana* is known from Turkey on *Ononis arvensis* L., *O. spinosa* L., *Trifolium ochroleucum* Huds., *T. pratense* L. (Braun 1995; Bahçecioğlu and Yıldız 2005; Bahçecioğlu et al. 2006). *Erysiphe pisi* var. *cruchetiana* on *Ononis pusilla* was recorded from Hungary, Italy, Switzerland, Ukraine, Yugoslavia (Braun 1995).

Erysiphe polygoni DC., Fl. franç. 2: 273. 1805.

Mycelium: amphigenous, white, dense, irregular patches or effuse, sometimes covering the entire surface of leaves. Conidiophores: straight, cylindrical, erect. Conidia: single-celled, cylindrical, doliform, 24-38 10-14 µm. Conidia viewed with SEM characterized by randomly oriented wrinkling. Chasmothecia: hypophyllous, numerous, scattered, dark brown to black, 80-140 µm diam., each with multiple asci. Appendages: numerous, 0.5-1.5 times as long as the chasmothecial diam., mycelium-like, septate, thin-walled, brown when mature, simple or irregularly branched. Asci: 3-8 per ascoma, short stalked, sometimes sessile, 45-75 30-45(-50) µm, containing 3-5 ascospores. Ascospores: ellipsoid, ovoid, hyaline, (20-) 25-32.5 10-12.5 µm in size (Fig. 7).

B4 Ankara: Kıbrıs Village, 1000-1200 m, roadside, 39°52'439"N, 32°59'830"E, on *Polygonum aviculare* L., 20.09.2009, TE 1084.

Erysiphe polygoni is common on hosts of various genera of numerous plant families throughout the world. It is known from Turkey on *Astragalus christianus* L., *A. elongatus* Willd., *A.*

leporinus var. *hirsutus* (Post) Chamberlain, *Dahlia* sp., *Dianthus* sp., *Fagopyrum esculentum* Moench, *Gerbera jasmesonii* Bolus ex Hook., *Hesperis bicupidata* (Willd.) Poir., *Mentha spicata* L., *Oenothera latifolia* (Rydb.) Munz., *Ononis pusilla* L., *Papaver rhoeas* L., *Polygonum arenarium* Waldst & Kit., *P. aviculare* L., *P. bistorta* L., *P. hydropiper* L., *P. lapathifolium* L., *P. maritimum* L., *P. pulchellum* Lois., *Raphanus raphanistrum* L., *Rumex acetosella* L., *R. acetosa* L., *R. angustifolius* Campd., *R. crispus* L., *R. conglomeratus* Murray, *R. obtusifolius* subsp. *subalpinus* (Schur) Celak, *R. patientia* L., *R. pulcher* L., *R. scutatus* L., *R. tuberosus* subsp. *horizontalis* (Koch) Rech., *Trifolium* sp. (Göbelez 1963; Uçar and Öner 1977; Tamer and Öner 1978; Sezgin et al. 1981; Tamer et al. 1987; Tamer et al. 1989; Tamer et al. 1990b; Braun 1995; Bahçecioğlu and Yıldız 2005; Bahçecioğlu et al. 2006).

Leveillula taurica (Lév.) G. Arnaud, *Annls Épiphyt.* 7: 92. 1921.

Mycelium: amphigenous, dense, white, confluent, sometimes effuse or evanescent. Conidiophores: simple or occasionally branched, cylindrical, septate. Conidia: hyaline, primary conidia lanceolate with narrowed apex and relatively broad base, secondary conidia elongate to cylindrical, germ tube arising near end of conidium. Surface ornamentation of conidia viewed with SEM consisting of low reticulate ridges between which were scattered low wart-like punctuations. Wart-like punctuations concentrated at the ends. Chasmothecia: gregarious to subscattered, often immersed in the dense mycelium, dark brown to black, 80-150 µm diam., each with multiple asci. Appendages: arising from the lower half of the ascoma, 0.5-1.5 times as long as the chasmothecial diam., myceloid, simple or irregularly branched, septate, hyaline or light brown. Asci: clavate-ovoid, short-stalked, 50-90 25-37.5 µm in size, containing 2(-4) ascospores. Ascospores: ellipsoid-ovoid, subhyaline to pale yellow, 20-37.5 17.5-25 µm in size (Fig. 8).

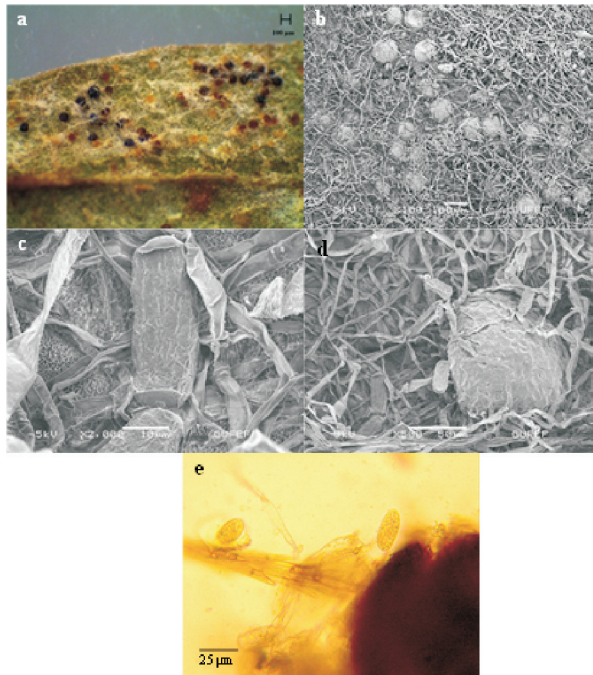


Fig. 7. *Erysiphe polygoni*: a, b - general appearance of powdery mildew; c - conidia (SEM); d - chasmothecia and appendages (SEM); e - ascospores

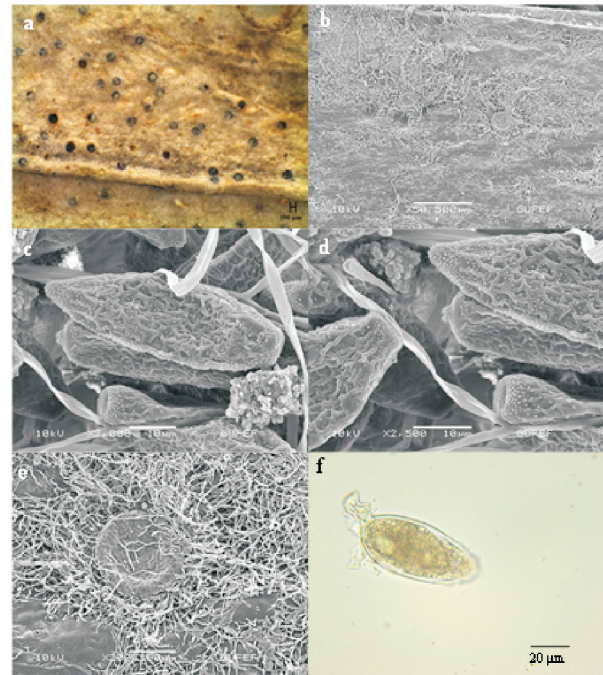


Fig. 8. *Leveillula taurica*: a, b - general appearance of powdery mildew on *Digitalis lamarckii*; c - conidia (SEM) on *Glacium corniculatum*; d - end of conidium showed dense wart-like punctuations (SEM) on *Glacium corniculatum*; e - chasmothecia and appendages (SEM) on *Digitalis lamarckii*; f - ascus on *Andrachne telephioides*

B4 Ankara: Kıbrıs Village, around Kartal Kayası, 1000-1100 m, on *Andrachne telephioides* L., 24.09.2009, TE 1086; B4 Ankara: Kıbrıs Village, around Cellinin Kayası, 1100 m, on *Scariola viminea* (L.) F.W. Schmidt, 24.08.2009, TE 1101; B4 Ankara: Kıbrıs Village, around Dipsizgöl, 1100 m, on *Digitalis lamarckii* Ivan., 01.08.2010, TE 1178; B4 Ankara: Kıbrıs Village, around Dipsizgöl, 1010 m, on *Glacium corniculatum* subsp. *refractum* (Nab.) Cullen, 01.08.2010, TE 1165.

The powdery mildew fungus, *Leveillula taurica*, is a unique foliar pathogen in its ability to infect a large and diverse number of plant species (Correl et al. 1987). Hirata (1968) reported *L. taurica* on some 710 host species from 59 plant families. Additional reports indicate that the host range of *Leveillula taurica* includes a minimum of 750 plant species including 27 economically important crop host (Palti 1974). This fungus is common on hosts of various genera of numerous plant families in Turkey. We collected this fungus

on leaves of *Digitalis lamarckii*, *Glacium corniculatum* subsp. *refractum*, *Scariola viminea*, and *Andrachne telephioides* in our research area.

Phyllactinia guttata (Wallr.) Lév., *Annls Sci. Nat., Bot., Sér.* 3 15: 144. 1851.

Mycelium: amphigenous, mostly hypophyllous, white to greyish. Conidiophores: straight and cylindrical. Conidia: single-celled, clavate, fusiform-clavate, 50-75 15-25 μm . Conidia viewed with SEM characterized by squared serpentine wrinkles between which were scattered low wart-like punctuations. Chasmothecia: hypophyllous, scattered, dark brown to black, 150-250 μm diam., each with multiple asci, ca. 8-25, mostly 15-20. Appendages: equatorial, acicular, with bulbous swelling, 1-2.5 times as long as the chasmothecial diam. Asci: broadly clavate, saccate, 60-70 25-30 μm , containing 2(-3) ascospores.



Ascospores: ellipsoid-ovoid, hyaline, 37.5-42.5 15-20 μm (Fig. 9).

B4 Ankara: Kibris Village, between Dipsizgöl and Kale, 1200 m, on *Crataegus rhipidophylla* Gand., 24.09.2009, TE 1123.

The most common species of these powdery mildews is *Phyllactinia guttata*, occurring on hosts of various genera of numerous plant families (Ellis and Ellis 1987; Farr et al. 1989; Braun 1995). In Turkey the fungus has been recorded on *Aceraceae* (*Acer campestre* L., *A. negundo* L.), *Anacardiaceae* (*Pistacia terebinthus* L.), *Betulaceae* (*Betula pendula* Roth), *Buxaceae* (*Buxus sempervirens* L.), *Corylaceae* (*Corylus avellana* L.), *Fagaceae* (*Castanea sativa* Miller, *Fagus sylvatica* L., *F. orientalis* Lipsky), *Moraceae* (*Morus alba* L., *M. nigra* L.), *Oleaceae* (*Fraxinus syriaca* Boiss.), *Rhamnaceae* (*Paliurus spina-cristi* Miller, *Rhamnus* sp.), *Rosaceae* (*Cerasus* sp.,

Crataegus szovitsii Pojark., *Pyrus communis* L., *Pyrus elaeagnifolia* Pallas subsp. *elaegnifolia*, *Rubus fruticosus* L.), *Ulmaceae* (*Ulmus campestris* L., *U. minor* Miller) (Karel 1958; Göbelez 1963; Braun 1995; Bahçecioğlu and Yıldız 2005; Bahçecioğlu et al. 2006).

Phyllactinia mali (Duby) U. Braun, *Feddes Repert.* 88: 657. 1978.

Mycelium: hypophyllous, effuse or in irregular patches, evanescent. Conidiophores: long and slender. Conidia: hyaline, clavate, 57.5-75 17.5-22.5 μm . Chasmothecia: scattered to gregarious, dark brown to black, 75-180 μm diam., each with multiple asci. Appendages: 4-12, equatorial, 160-180 μm long, bulbous base 25-30 μm diam. Asci: ca. 8-20 per ascoma, stalked, 60-75 (27.5-)30-35 μm , containing 2 ascospores. Ascospores: ellipsoid-ovoid, hyaline, 22.5-35(-37.5) 15-17.5 μm (Fig. 10).

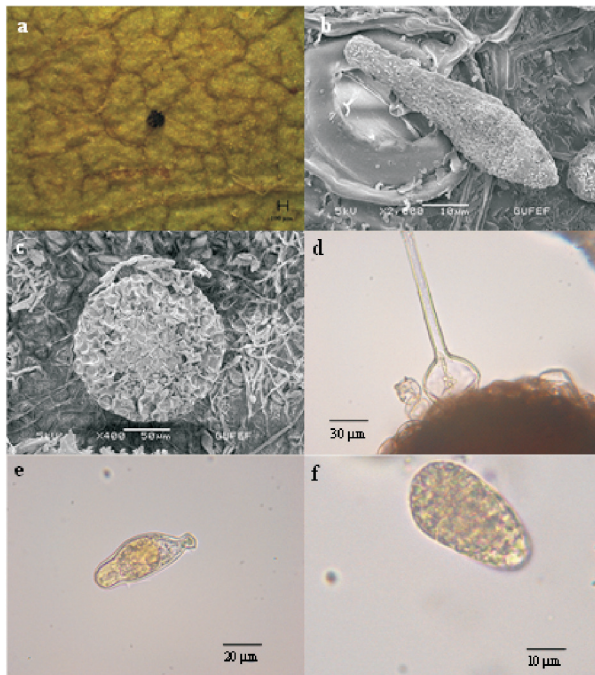


Fig. 9. *Phyllactinia guttata*: a - general appearance of powdery mildew; b - conidia (SEM); c - chasmothecia (SEM); d - appendage; e - ascus; f - ascospores

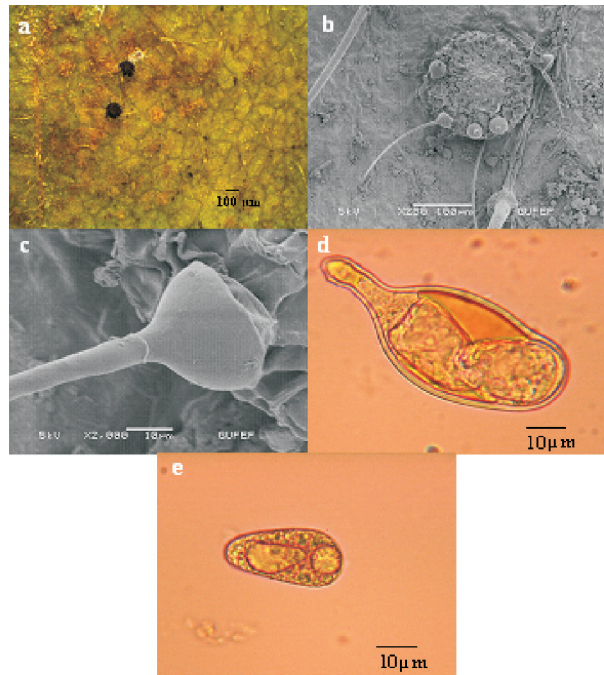


Fig. 10. *Phyllactinia mali*: a - general appearance of powdery mildew; b - chasmothecia (SEM); c - appendage (SEM); d - ascus; e - ascospores



B4 Ankara: Kibris Village, around Kavak Stream, 1080 m, on *Rubus sanctus* Schreber., 24.09.2009, TE 1127.

This species is widespread in Europe on *Amelanchier*, *Crataegus*, *Mespilus*., *Malus*, and *Pyrus* spp. All examined collections on *Rubus* L. were characterized by large ascomata (150-250 µm diam.) and previously referred to *Phyllactinia guttata* s. lat. (Braun 1995), but our examined collection on *Rubus* is characterized by smaller

chasmothecia, 75-180 µm diam. agreeing with *Phyllactinia mali*. *Rubus sanctus* is a new host for *Phyllactinia mali*.

Acknowledge

We would like to thank Uwe Braun (Martin-Luther-Universität, Halle/Saale, Germany) for confirmation of identification of *Phyllactinia mali* (Duby) U. Braun.

References

- Amano K., Host range and geographical distribution of the powdery mildew fungi, Japan Scientific Societies Press, Japan(1986).
- Bahçecioğlu Z., Yıldız B., A study on the microfungi of Sivas province, Turkish Journal of Botany, 29:23-44(2005).
- Bahçecioğlu Z., Kabaktepe Ş., Yıldız B., Microfungi isolated from plants in Kahramanmaraş province, Turkey, Turkish Journal of Botany, 30:419-434(2006).
- Bolay A., Powdery mildews of Switzerland (Erysiphaceae), Cryptogamica Helvetica, 20:1-176(2005).
- Braun U., A monograph of the Erysiphales (powdery mildews), Verlagsbuchhandlung, Berlin(1987).
- Braun U., The powdery mildews (Erysiphales) of Europe, Gustav Fischer Verlag, New York(1995).
- Braun U., Cook R.T.A., Taxonomic Manual of the Erysiphales (Powdery Mildews), CBS, Utrecht, The Netherlands(2012).
- Braun U., Takamatsu S., Phylogeny of Erysiphe, Microsphaera, Uncinula (Erysiphaceae) and Cystotheca, Podosphaera, Sphaerotheca (Cystothecaceae) inferred from rDNA ITS sequences: Some taxonomic consequences, Schlechtendalia, 4:1-33(2000).
- Braun U., Cook R.T.A., Inman A.J., Shin D., The taxonomy of the powdery mildew fungi, In: Bélanger R.R., Bushnell W.R., Dik A.J., Carver T.L.W., (eds). The Powdery Mildews: A Comprehensive Treatise, pp. 13-55, American Phytopathological Society, St. Paul(2002).
- Braun U., Cunnington J.H., Brielmaier-Liebetanz U., Ale-Agha N., Heluta V., Miscellaneous notes on some powdery mildew fungi, Schlechtendalia, 10:91-95(2003).
- Cook R.T.A., Inman A.J., Billings C., Identification and classification of powdery mildew anamorphs using light and scanning electron microscopy and host range data, Mycological Research, 101:975-1002(1997).
- Correll J.C., Gordon T.R., Elliott V.J., Host range, specificity, and biometrical measurements of *Leveillula taurica* in California, Plant Disease, 71:248-251(1987).
- Davis P.H., Flora of Turkey and East Aegean Islands. Vols. 1-9, Edinburgh University Press, Edinburgh(1965-1985).
- Dennis R.W.G., British Ascomycetes, J. Cramer, Stuttgart(1981).
- Dudka I.O., Heluta V.P., Tykhonenko Y.Y., Andrianova T.V., Hayova V.P., Prydiuk M.P., Dzhagan V.V., Isikov V.P., Fungi of the Crimean Peninsula, M.G. Kholodny Institute of Botany, Ukraine(2004).
- Ellis M.B., Ellis J.P., Microfungi on Land Plants, Croom Helm, London, Sydney(1987).
- Erdoğan M., Hüseyin E., Microfungi of Kurtboğazi Dam (Ankara) and its environment. - Ot Sistematik Botanik Dergisi 14(1)131-150(2008).
- Fakirova V.I., Order Erysiphales, In: Vanev S., (ed.). Fungi Bulgaricae. Vol. 1. Bulgarian Academy of Sciences Publishing House, Sofia(1991).
- Farr D.F., Bills G.F., Chamuris G.P., Rossman A.Y., Fungi on plants and plant products in the United States, APS Press, St. Paul(1989).
- Gasich E.L., Berestetskij A.O., Mycobiota of weeds in vicinities of Saratov and Engels, Mikologia i Fitopatologia, 31:18-22(1997).
- Girilovich I.S., Gulis V.I., Khramtsov A.K., Poliksenova V.D., Micromycetes of state national park of republik Belarus II. Powdery mildew fungi, Mikologia i Fitopatologia, 39:24-30(2005).
- Göbelez M., La Mycoflore de Turquie. I, Mycopathologia et Mycologia Applicata, 19:296-314(1963).
- Heluta V.P., Flora of fungi of Ukraine. Powdery mildews, Naukova Dumka, Kiev(1989).
- Hirata K., Notes on host range and geographical distribution of the powdery mildew fungi, Transactions of the Mycological Society of Japan, 9:73-88(1968).
- Kabaktepe Ş., Bahçecioğlu Z., Microfungi identified from the flora of Ordu province in Turkey, Turkish Journal of Botany, 30:251-265(2006).



- Karaca I., A research on Erysiphaceae of Turkey, Atatürk Üniversitesi Yıllığı, Erzurum(1961).
- Karel G.A., Preliminary list of plant diseases in Turkey, Ayyıldız Matbaası, Ankara(1958).
- Khodaparast S.A., Hedjaroude G.A., Ershad D., Zad J., Termeh F., A study on the identification of Erysiphaceae in Gilan Province, Iran (I), Rostaniha, 1:53-63(2000).
- Kirk P.M., Ansell A.E., Authors of fungal names, CAB International, Wallingford(1992).
- Kirk P.M., Cannon P.F., Minter D.W., Stalpers J.A., Ainsworth and Bisby's Dictionary of the Fungi, 10nd edn, CAB International, Wallingford(2008).
- Mulenko W., Majewski T., Ruszkiewicz-Michalska M., A preliminary checklist of micromycetes in Poland. Vol. 9, W. Szafer Institute of Botany, Polish Academy of Sciences, Poland(2008).
- Palti J., Striking divergences in the distribution of *Leveillula taurica* (Lév.) Arn. on some major crop hosts, Phytopathology Mediterranean, 13:17-22(1974).
- Rusanov V.A., Bulgakov, T.S., Powdery mildew fungi of Rostov region, Mikologia i Fitopatologia, 42:314-322(2008).
- Ruszkiewicz-Michalska M., Michalski M., Phytopathogenic micromycetes in Central Poland. I. Peronosporales and Erysiphales, Acta Mycologica, 40:223-250(2005).
- Sezgin E., Karcıoğlu A., Esentepe M., Onan E., Determinations of fungal diseases on the commercially grown ornamental plants in Aegean Region, Journal of Turkish Phytopathology, 10(1)53-61(1981).
- Tamer A.Ü., Öner M., The parasitic fungi of Aydın province, Mycopathologia, 64(2)87-90(1978).
- Tamer A.Ü., Gücin F., Altan Y., Some parasitic fungi determined in plants living in Pötürge district of Malatya, VIII. Biological Congress Botanical Information, Vol. 2, 3-5 September 1986, Ege University Press, Pp. 202-217, İzmir(1987).
- Tamer A.Ü., Altan Y., Gücin F., Some parasitic fungi determined on the flora of Gülveren Village (Erzurum-Şenkaya), Anadolu Üniversitesi Fen-Edebiyat Fakültesi Dergisi, 1(2)45-55(1989).
- Tamer A.Ü., Altan Y., Gücin F., Parasitic fungi determined in plants living in Hazar mountain, X. Biological Congress Botanical Information, Vol. 2, 18-20 July 1990, Atatürk Üniversitesi, Fen Edebiyat Fakültesi Ofset Tesisleri, Pp. 173-181, Erzurum(1990a).
- Tamer A.Ü., Altan Y., Gücin F., Some parasitic fungi from the flora of Eastern Anatolia, Turkish Journal of Botany, 14:83-86(1990b).
- Uçar F., Öner M., A taxonomical investigation on parasitic fungi living on various plants from the vicinity of İzmir, Ege Üniversitesi Fen Fakültesi Dergisi, B1(3)221-240(1977).