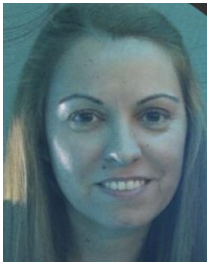


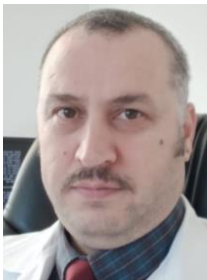
- [12] M. A. Friedl, C. E. Brodley, "Decision tree classification of land cover from remotely sensed data", *Remote Sensing of Environment*, 61, 1997, 399-409
- [13] S. R. Safavian, D. Landgrebe, "A survey of decision tree classifier methodology", *IEEE Transactions on Systems Man and Cybernetics*, 21, 1991, 660-674
- [14] PN. Tan, M. Steinbach, V. Kumar, "Introduction to Data Mining" (First Edition) (March 25, 2006) Copyright 2006, Pearson Addison-Wesley.
- [15] O. Maimon, L. Rokach, "Data Mining and Knowledge Discovery Handbook", Springer; 2nd ed. 2010.
- [16] N. Suneetha, Ch. V. M. Hari, V. Sunil Kumar, "Modified Gini Index Classification: A Case Study of Heart Disease Dataset", *International Journal on Computer Science and Engineering* Vol. 02, No. 06, 2010, 1959-1965
- [17] L. Breiman, J.H. Friedman, R.A. Olshen and C. J. Stone. 1984, "Classification and Regression Trees" Monterey, CA: Wadsworth, 358
- [18] L. E. Raileanu, and K. Stoffel, Theoretical Comparison between the Gini Index and Information Gain Criteria, *Annals of Mathematics and Artificial Intelligence* 41.1, 77-93. May 2004
- [19] K. Teknomo, "Decision Tree Tutorial", *Revoledu.com* Online edition, Last Update: October 2012
- [20] J. Mingers, "An empirical comparison of pruning methods for decision tree induction", *Machine Learning*, 4, 1989, 227-243
- [21] Z. Jingmin, et al. "Prediction model of in-hospital mortality in intensive care unit patients with heart failure: machine learning-based, retrospective analysis of the MIMIC-III database", *Dryad, Dataset*, 2021, <https://doi.org/10.5061/dryad.0p2ngf1zd>.

BIOGRAPHIES



NALAN HAKIME NOGAY Istanbul, Turkey, in 1977. He received the B.S., M.S. and Ph.D. degrees in nutrition and dietetics from Hacettepe University, Ankara, Turkey, in 1999, 2002 and 2009 respectively.

From 2009 to 2015, she was an Assistant Professor with the Nutrition and Dietetic Department. Since 2015, she has been an Associate Professor with the Nutrition and Dietetic Department, Ankara Hacettepe University. She has more than 40 papers. Her research areas are nutrition in the autistic and disabled people, obesity and community nutrition.



HIDIR SELCUK NOGAY Isparta, Turkey, in 1975. He received the B.S. , M.S. and Ph.D. degrees in electrical education from the Kocaeli University, Marmara University and Marmara University respectively in 1999, 2002 and 2008.

From 1999 to 2008, he was a Research Assistant with the Deep Learning and Electrical Machine Laboratory. From 2009 to 2011, he was an Assistant Professor with the Electrical Engineering. From 2011 to 2015, he was an Associate Professor with the Electrical Engineering. Since 2016, he has been a Professor with the Electrical Engineering Department, Kayseri University. His research interests include deep learning applications in medicine, electrical power systems, electrical machinery and renewable energy.