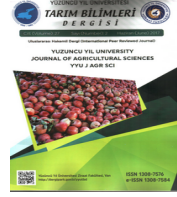




Yuzuncu Yil University  
Journal of Agricultural Sciences  
(Yüzüncü Yıl Üniversitesi Taram Bilimleri Dergisi)

<https://dergipark.org.tr/en/pub/yyutbd>



ISSN: 1308-7576

e-ISSN: 1308-7584

Research Article

**Land Quality Index for Paddy (*Oryza sativa* L.) Cultivation Area Based on Deep Learning Approach using Geographical Information System and Geostatistical Techniques**

**Nurettin ŞENYER<sup>1</sup>, Hasan AKAY<sup>2</sup>, Mehmet Serhat ODABAS\*<sup>3</sup>, Orhan DENGİZ<sup>4</sup>  
Saravanan SIVARAJAN<sup>5</sup>**

<sup>1</sup>Samsun University, Engineering Faculty, Software Engineering Department, 55400, Samsun, Türkiye

<sup>2</sup>Ondokuz Mayıs University, Agriculture Faculty, Field Crops Department, 55139, Samsun, Türkiye

<sup>3</sup>Ondokuz Mayıs University, Bafra Vocational School, Computer Programming Department, 55400, Samsun, Türkiye

<sup>4</sup>Ondokuz Mayıs University, Agriculture Faculty, Department of Soil Science and Plant Nutrition Department, 55139, Samsun, Türkiye

<sup>5</sup>Vellore Institute of Technology, VIT School of Agricultural Innovations and Advanced Learning, Vellore, India.

<sup>1</sup><https://orcid.org/0000-0001-8668-5263>, <sup>2</sup><https://orcid.org/0000-0003-1198-8686>, <sup>3</sup><https://orcid.org/0000-0002-1863-7566>

<sup>4</sup><https://orcid.org/0000-0002-0458-6016>, <sup>5</sup><https://orcid.org/0000-0002-6846-4683>

\*Corresponding author e-mail: [mserhat@omu.edu.tr](mailto:mserhat@omu.edu.tr)

**Article Info**

Received: 20.09.2022

Accepted: 05.12.2022

Online published: 15.03.2023

DOI: 10.29133/yyutbd.1177796

**Keywords**

Deep learning,  
Mapping,  
*Oryza sativa* L.,  
Paddy,  
Precision agriculture

**Abstract:** Türkiye has ideal ecological conditions for growing rice, and its yield per hectare is often higher than the average worldwide. However, unbalanced fertilization, nutrient deficiency, and irrigation problems negatively affect paddy production when soil characteristics are not considered. The present study was conducted on a 1763-hectare field (652000-659000E-W and 4528000-4536000N-S) in 2019. This study's primary goal was to categorize land quality for rice production using 15 different physicochemical parameters and a GIS (Geographical Information Systems) and deep learning (DL) technique. Using these parameters soil types were classified and regression analysis was performed by DL. Different soil parameters as network outputs used in this study caused different performance levels in models. Therefore, different models were suggested for each network output. The R<sup>2</sup> values indicated a respectable level for parameter prediction, and an accuracy of 88% was attained when classifying "class" data. The findings of the study demonstrated that deep learning may be used to forecast soil metrics and distinguish between different land quality classes. Additionally, a field investigation was used to validate the indicated land quality classifications. Using statistical techniques, a substantial positive link between rice yield and land quality classes was discovered.

**To Cite:** Şenyar, N, Akay, H, Odabas, M S, Dengiz, O, SivaraJan, S, 2023. Land Quality Index for Paddy (*Oryza sativa* L.) Cultivation Area Based on Deep Learning Approach using Geographical Information System and Geostatistical Techniques. *Yuzuncu Yil University Journal of Agricultural Sciences*, 33(1): 75-90. DOI: <https://doi.org/10.29133/yyutbd.1177796>

**1. Introduction**

Rice, a warm climate grain (*Oryza sativa* L.) is the main food source for 50% of the world's population (Sirat et al., 2012; Akay et al., 2017). Although rice cultivation is conducted in all

geographical regions in Türkiye, 56.0% of the total rice area is in the Thrace-Marmara region, 36.5% in the Black Sea region, and 7.5% in other regions (Meral and Temizel 2006; Garris et al., 2005)

Considering different scenarios derived from climate change models, food security is the most pressing issue in densely populated developing countries (Jagadish et al., 2007). A great effort has been exerted to meet the nutritional needs of the growing population in developing countries in terms of achieving consistently high yield rates (Araus and Cairns, 2014). In addition, the specification and classification of plant diseases are one of the most vital methods for early-stage intervention to increase yield (Shrivastava et al., 2019). It also ensures the ecological sustainability of soil types, which is one of the important components in both the economic and terrestrial ecosystem, as well as the use of produce considering land needs, its management, yield, and increase in quality. Therefore, important studies have been conducted on soil and land quality index approaches in recent years. The main characteristics of the alluvial land and soils which are widely classified as fluvent sub order of the Entisol order often show large variations in their features such as textural or organic matter distribution over short distances (Dengiz 2010). Identifying land quality is actually a difficult process. The reason for the complex relationship is between the physical, chemical, and biological properties of the soil and other factors. Many studies have been conducted to search the relationships between physical, chemical, and biological properties of soil types and yield (Dengiz 2013; Li et al., 2018; Dedeoğlu and Dengiz, 2019; Mwendwa et al., 2019; Rezaee et al., 2020). While it is possible to assess land quality by directly conducting land testing, several modal approaches such as comparative assessment, dynamic assessment, and land quality index (LQI) can be used indirectly. Since direct approaches are generally expensive, labor-intensive, and time-consuming, modal approaches are used more often (Dengiz 2020). Land Quality Index(LQI) approach was used in the rice land assessment. In this approach, the land quality index assessment process, which usually starts with the creation of a data set, is graded by giving score ratios according to the severity of limiting plant growth on indicators with different units. In addition, the possibility of the deep learning system, which had never been used before in rice land quality studies, was investigated in this study.

Deep learning is a modern and popular technique for image processing and data analysis with promising results and great potential. Deep learning, which has been successfully applied in various fields, has recently been used in precision agriculture applications (Kamilaris 2018). To give an example of these studies, computer-aided diagnosis (CAD) systems, using AI (Artificial Intelligence), were used in order to accurately identify diseases and pests affecting small farmers' production and also to help understand the severity of symptoms, as well as allowing any farmer with access to a smartphone to benefit from expert knowledge in a practical and cost-effective manner (Esgario et al., 2020).

Azizi et al. (2020) used a convolutional neural network (CNN), a deep learning method, to classify soil clusters while they used VggNet16, ResNet50, and Inception-v4 trained models to train CNN. Esgario et al. (2020) used deep learning to classify biotic stress in coffee and to estimate its severity. The ResNet50 produced a high accuracy rate of 95.24%. Padarian et al. (2019) used deep learning to predict soil properties from regional spectral data and this study in which they used CNN showed that it could be reduced by 87% compared to predicting soil properties (PLS), a traditional method. in deeper soil layers with a high accuracy rate.

The decrease in land quality due to intensive rice cultivation threatens the sustainability of rice agriculture in the Çorum-Osmancık region of Türkiye. In the present study, we focused on identifying detailed rice land quality classes and mapping their spatial distributions in order to perform sustainable rice agriculture practices. The possibility of using the deep learning technique, accompanied by geographic information systems and geostatistics to determine the land quality classes for rice production has been investigated in this study. The identification of land quality classes has also been validated with data collected from field studies.

## 2. Material and Methods

### 2.1. Study Area

The study area is located within the boundaries of Çorum- Osmancık district, in the Kızılırmak Valley of the Western Black Sea region, and between the coordinates 652000-659000E-W and 4528000-

4536000N-S (WGS84, Zone 36 UTM-m). The study area covers approximately 1,763 ha and is between 399-480m above sea level (Figure 1).

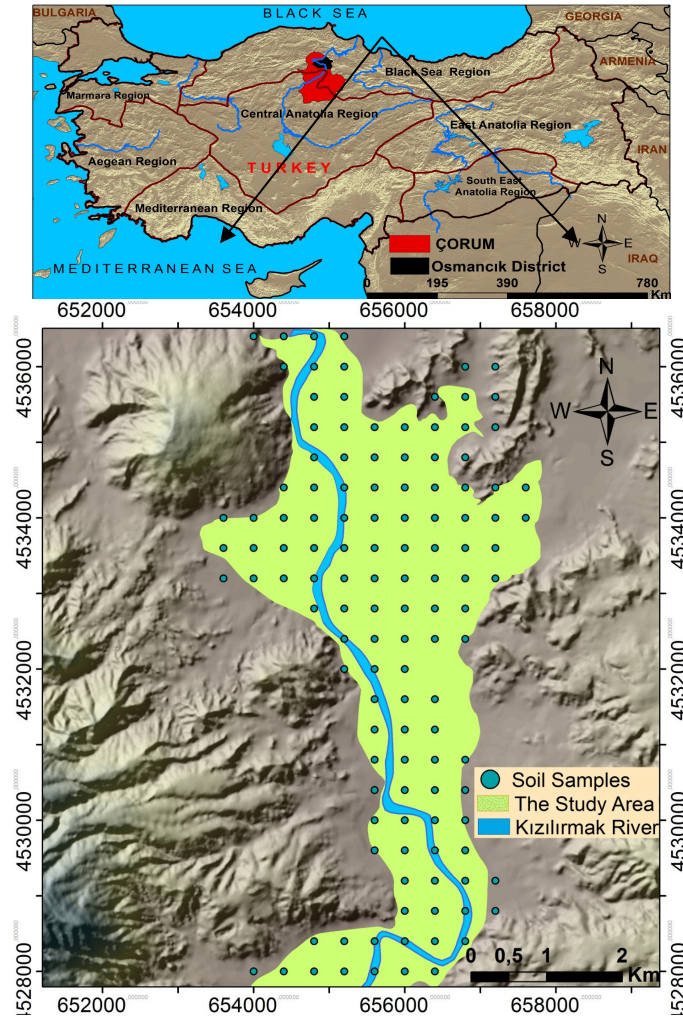


Figure 1. Soil sample pattern and location map of the study area.

The study area is located in a transition area between the Black Sea and Central Anatolian climate regimes and falls into the semi-arid climate class. The physico-chemical properties of the study area were assessed in terms of the coefficient of variation (CV) which clearly indicated that the soil properties were highly variable.

The region is surrounded by Ilgaz Mountains, which extends through the east-west direction, from the west, and by its extensions and Koroglu Mountains from the south. The geological structure of these mountainous areas in the region is generally composed of Paleozoic metamorphic rocks. The wide valley bottom plains through which Kızılırmak (the Halys river) flows, make up alluvial deposits belonging to the Quaternary period. Generally, rice is grown on soil formed on these alluvial deposits. The study area is mostly flat or slightly inclined (0.0-2.0%). A total of eight soil series have been identified in the study area. Dengiz et al., (2009), defined 29 mapping units according to the digital soil map they created (Figure 2).

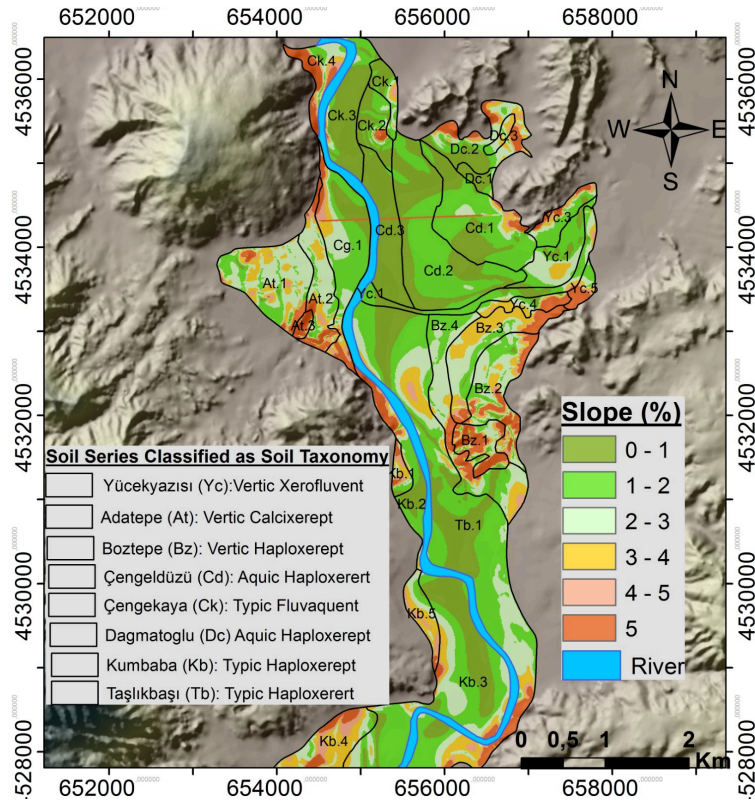


Figure 2. Slope and soil map of the study area.

## 2.2. Soil sampling and indicator selection

In this study, a total of 246 soil samples, disturbed and undisturbed sampling from the surface (0-30 cm), with distributed soil types of Vertisol, Entisol, and Inceptisol were collected from the grid points (400 m x 400 m) created. Soil samplings were conducted especially in the autumn after the harvest, in order to avoid the effects of soil management processes such as fertilization and irrigation during the rice-growing period. Each mapping unit (land mapping units) defined with its unique soil and land properties significantly affects the suitability of the determined land utilization type to the land. Therefore, it is necessary to identify the land needs of each land utilization type for a successful and sustainable agricultural practice.

The land utilization type investigated in this study is rice. Some literature sources were examined in order to identify the land needs of rice and soil physicochemical and topographic indicators required for the model (FAO, 1983 and 1985; Sys et al., 1993; Mongkolsawat et al., 2002; Bunting, 1981; Dengiz, 2013; Sezer and Dengiz, 2014; Dengiz et al., 2015; Nath et al., 2016). The development of the rice plant depends on the physical and chemical conditions of the soil type that affect the plant's root system and affects ability to grow efficiently. Therefore, Moron (2005) stated that the indicators used in soil quality identification should be sensitive enough to track changes and be easily measured and interpreted. Fourteen quality parameters fall into two different main categories for the rice land quality index model (LQIR). These are i-(Nutrient Availability Index (NAI) (including nitrogen, phosphorus, potassium, and zinc content in the soil), ii-) soil quality index (SQI) (including slope, soil depth, bulk density, clay, silt, sand, hydraulic conductivity (HC), organic matter, electrical conductivity (EC), lime-CaCO<sub>3</sub>, and soil reaction-pH (Table 1). Table 1 shows the analytical protocols used.

Table 1. Analytical Protocol measurements for indicators

Indicators	Unit	Protocol	Reference
<b>Soil quality indicators</b>			
Soil Depth	cm	From soil map	Dengiz et al. (2009)
Slope	%	From DEM	Dengiz et al. (2009)
BD	gr cm <sup>-3</sup>	Undisturbed condition	Blacke and Hartge, 1986
HC	cm h <sup>-1</sup>	Undisturbed and saturated condition	Oosterbaan (1994)
Texture (Clay, Silt and Sand)	%	hydrometer method	Soil Survey Staff (1996)
OM	%	wet oxidation method (Walkley-Black) with potassium dichromate (K <sub>2</sub> Cr <sub>2</sub> O <sub>7</sub> )	Nelson and Sommers 1982
pH	1:2.5	(w:v) soil-water suspension	Soil Survey Staff (1996)
EC	dS m <sup>-1</sup>	(w:v) soil-water suspension	Soil Survey Staff (1996)
CaCO <sub>3</sub>	%	Scheibler calsimeter	Soil Survey Staff (1993)
<b>Nutrient availability indicators</b>			
NaHCO <sub>3</sub> -P	mg kg <sup>-1</sup>	the molybdophosphoricblue method	Kacar B (2016)
Total N	%	Kjeldahl	Bremner and Mulvaney (1982)
NH <sub>4</sub> OAc-K,	mg kg <sup>-1</sup>	Ammonium acetate extraction, flame spectrometry detection	Soil Survey Staff (1992)
DTPA-Zn	mg kg <sup>-1</sup>	DTPA extraction, AAS detection	Kacar B (2016)

### 2.3. Land quality index and rating assignment

The rice plant likes soil that is deep, clayish, and rich in plant nutrients and organic matter, as well as being medium resistant to salt (Özkan et al., 2019).

Land quality indicators were used in the study area (Table 2). The identification of the rice land quality index consists of the nutrient availability index and soil quality index. The formula used to identify the nutrient availability index (Dengiz, 2013) is given below.

$$NAI(\text{Nutrient Availability Index}) = N(\%) \times P(\text{mg kg}^{-1}) \times K(\text{mg kg}^{-1}) \times Zn(\text{mg kg}^{-1}) \quad (1)$$

It is used to identify soil quality index (SQI) (Gupta and Abrol, 1993) is shown below.

$$SQI = C_y \times S_i \times S_a \times D \times F \times P \times G \times S \times K \times H \quad (2)$$

Where; C<sub>y</sub> is clay, S<sub>i</sub> is silt, S<sub>a</sub> is sand, D is soil depth, F is slope, P is bulk density, G is hydraulic conductivity, S is exchangeable sodium percentage (ESP), K is (CaCO<sub>3</sub>) content, and H is pH.

Table 2. Rating factors for indications of land quality for paddy cultivation

Land quality indicator	Diagnostic Factor	Unit	Factor rating			
			1.0	0.8	0.5	0.2
			NAI= N x P x K x Zn			
<b>I. Nutrient Availability Index (NAI)</b>	TN	%	>0.2	0.1-0.2	<0.1	-
	P	mg kg <sup>-1</sup>	>25	10-25	<10	-
	K	mg kg <sup>-1</sup>	>60	30-60	<30	-
	Zn	mg kg <sup>-1</sup>	>0.7	0.7-0.5	<0.5	-
<b>II. Soil Quality Index (SQI)</b>			SQI = C <sub>y</sub> x S <sub>i</sub> x S <sub>a</sub> x D x F x P x G x S x K x H			
Texture	Clay-Cy	%	> 50	40-50	25-40	<25
	Silt-Si	%	<25	25-40	40-50	>50
	Sand-Sa	%	<30	30-45	45-50	>50
Depth (D)		cm	> 50	25-50	15-25	< 15
Topography (F)	Land form or Slope	%	Flood plain or 0-2%	Low terrace or 2-4%	Middle terrace or 4-6%	High terrace/ mountain or >6%
Bulk Density (P)	BD	gr cm <sup>-1</sup>	<1,40	1,40-1,45	1,45-1,60	>1,60
Hydraulic conductivity (G)	HC	cm h <sup>-1</sup>	< 0.5	0.5-2.0	2.0-6.25	> 6.25
Electric Conductivity (S) or ESP	EC	dS/m (%)	0-3.1 10	3.2-4 10-20	4.1-5 > 20	> 5.1 > 20
Organic matter (O)		%	>3	3-1,5	1,5-0,5	<0,5
Lime (K)	CaCO <sub>3</sub>	%	0-5	5-15	15-20	> 20
Soil reaction (H)	pH	-	5.5-7.3	7.4-7.8 5.1-5.5	7.9-8.4 4.0-5.0	>8.4 < 4.0

Each indicator was scored with a ratio value between 0.2 and 1.0. The results of the analysis on the indicator take a value of 1.0 if it has the most suitable condition for rice cultivation, and 0.2 if it has the most unfavorable condition. The indicator takes a value between 0.2 and 1.0 according to the severity of limiting rice growth. The spatial information of both descriptive indicators on the NAI and descriptive indicators on the SQI were obtained from land mapping units and surface soil samples. In order to identify the land quality index value for rice, the following formula was used (Dengiz, 2013; Sezer and Dengiz, 2014).

$$\text{LQIR (land quality index)} = \text{NAI} \times \text{SQI} \quad (3)$$

The above-mentioned formula was applied to each soil sample. As a result, the higher the point value is, the higher the suitability of land is for the specified Land Utilization Type. Rice land quality classification according to Dengiz (2013) is given in Table 3.

Table 3. Land quality index value for rice cultivation

Definition	Suitability Class	Land Quality Index Value
Highly Suitable	S1	1.00-0.250
Moderate Suitable	S2	0.250-0.100
Marginally Suitable	S3	0.100-0.025
Unsuitable	N	< 0.025

For the purpose of model verification, for each quality class in the study area, random blocks field trial pattern using 12 paddy varieties (Sumnu, Osmancik-97, Gonen, Beser, Duragan, Halilbey, 7721, Karadeniz, Kizilirmak, Koral, Negis, and Aromatik) was carried out for two years. In the experiment where the strewing planting method was applied, parcel yields were obtained by removing the edge effect so that the plot size was  $4 \times 4 = 16 \text{ m}^2$  and the harvest area was  $3 \times 4 = 12 \text{ m}^2$  (Sezer et al., 2017). ANOVA and LSD0.05 were performed for the grain yields. In addition to that, in order to gain values of basic descriptive statistics parameters, IBM SPSS Statistics 23v. program was used (IBM, 2015).

## 2.4. Deep learning and algorithms

Classification and estimation are skills that a person has learned and used multiple times throughout their life. Previously used neural networks only had one or two hidden layers; however, deep models may have a hundred layers (Goodfellow et al, 2016). These layers are used to classify pre-tagged input data or to perform numerical prediction (Kamilaris, 2018). Multiple linking between layers generates a large number of parameters. These parameters are usually initialized with random values.

## 2.5. Architecture of deep learning and tools

Despite the differences in deep learning architectures with their unique features, they all share the same aim which is to reduce the complexity of the model and increase its accuracy. (Esgario, 2020). Our model in the present study is trained on Google Colaboratory (2020), a free Jupyter notebook environment operating on the cloud. Keras (2020) backend (Python Deep Learning library) is used as a deep learning package with Tensorflow. Python 3 programming language was used to implement the deep model. In addition to many libraries required to implement deep learning algorithms, Numpy, Pandas, and Matplotlib libraries were used. Feedforward Neural Networks (FNN), a basic deep learning method was used (Goodfellow et. al, 2016). In prepared feedforward neural network (FNN) layers, the Sequential model, which provided a flat layer stack, the most common model type in which each layer had one input tensor and one output tensor, was used (Chollet 2020).

Table 4. Deep learning regression (RM1, RM2, RM3) and classification models (CM1, CM2)

Models	Input Layer	Hidden Layer	Output Layer	Trainable parameters
RM1	Dense: 15	Dense: 30 Dropout: 20% Dense: 45	Dense: 1	1.921
RM2	Dense: 15	Dense: 64 Dropout: 20% Dense: 128 Dropout: 40%	Dense: 1	9.473
RM3	Dense: 15	Dense: 64 Dropout: 20% Dense: 64 Dropout: 20% Dense: 128 Dropout: 20%	Dense: 1	13.633
CM1	Dense: 15	Dense: 64 Dropout: 20%	Dense: 4	5.444
CM2	Dense: 15	Dense: 32 Dropout: 20% Dense: 64 Dropout: 30% Dense: 64 Dropout: %40	Dense: 4	7.044

Fifteen different physicochemical properties (pH, EC, lime, OM, depth, slope, HC, BD, clay, silt, sand, N, P, K, and Zn) of soil types investigated in the study were chosen as input layer parameters in the deep learning system. The ReLU (Rectified Linear Unit) activation function, which is a widely used system in identifying the activation status of neurons in models as well as offering a computational advantage, was used in the study. RMSprop, based on gradient descent, was used as the optimization method. The learning rate was chosen as 0.001. In order to eliminate the uncertainty caused by network randomness, fixed seed data were input at the beginning of the program.

## 2.6. Training, Test, and Validation

In the present study, the dataset was divided into education (80%) and test (20%) sets. In addition, 20% of the training set was chosen as validation data. In deep neural networks, the learning is based on a gradient descent algorithm and back propagation approach. The cross entropy cost function was used for classification evaluation. After the cost function was calculated, the derivative of this function was assessed on weights. While performing regression, MSE (Mean squared error) loss function was used.

## 2.7. Performance metrics

During network training, the cases where the models provided the minimum cost function value for the validation set (weight set) were recorded. Then, these recorded models were assessed using the test dataset. In the classification study, the results were compared in terms of Confusion Matrix and Accuracy (ACC). In the regression study, results were assessed in terms of RMSE and R2. To evaluate the proposed deep learning algorithms, the accuracy metric was used as shown in equation 4:

$$\text{Accuracy} = (\text{TP} + \text{TN}) / (\text{TP} + \text{TN} + \text{FP} + \text{FN}) \quad (4)$$

Where TP, TN, FP, and FN are truly positive, true negative, false positive, and false negative, respectively (Aggarwal and Agrawal, 2012).

## 2.8. Interpolation Analyses

Interpolation techniques are used in expressing and mapping the changeability of values on investigated properties depending on the distance (Goovaerts, 1999; Mulla and McBratney, 2000).

IDW is the most commonly used interpolation models in identifying the spatial distribution of rice land quality index (LQIR) value for each point defined within the study area. The RBF (spline)

deterministic and stochastic models (also known as Kriging) models such as ordinary, universal, and simple Kriging models were also used. A total of 15 models used for forming a spatial distribution map of LQIR on the interpolation were (Inverse Distance Weighting-IDW; 1, 2, 3, Radial Basis Function-RBF; Thin Plate Spline-TPS; Completely Regularized Spline (CRS); Spline With Tension (ST), and Ordinary, Simple, and Universal Kriging models. The method that provided the lowest square-root-mean-error-value was assessed as the most suitable method. The following formula was used to calculate the square-root-mean-error.

$$RMSE = \sqrt{\frac{\sum(z_{i*} - z_i)^2}{n}} \quad (5)$$

Zi: refers to the estimated value, measured value, and the number of samples.

### 3. Results and Discussion

#### 3.1. Soil physico-chemical characteristics

The descriptive statistics of some physico-chemical properties of soil samples are shown in Table 5. Wilding et al (1994) and Mulla and McBratney (2000) classified the variability as low if the CV is less than 15%, moderate if the CV is between 15% and 35%, and high if the CV is greater than 35%. In this sense, variables of pH had low CV. On the other hand, the variables of HC, sand, EC and AvP, AvK, AvZn, and OM content showed a high level of variability. In this study, clay, silt, sand, BD, HC, pH, EC, and CaCO<sub>3</sub> showed normal data distribution.

Table 5. Descriptive statistics of some physicochemical properties of soil samples

Indicators	Mean	SD	(%) CV	Variance	Min.	Max.	Skewness	Kurtosis
Clay (%)	53.34	1.21	25.23	181.04	23	67	-0.11	-0.84
Silt (%)	27.15	0.53	21.82	35.08	21	43	1.71	1.41
Sand (%)	19.52	1.26	71.94	197.13	6	55	1.09	1.32
BD (gr cm <sup>-1</sup> )	1.35	0.02	15.42	0.04	0.88	1.88	0.63	-0.31
HC (cm h <sup>-1</sup> )	1.28	0.17	144.6	3.43	0.11	5.93	1.47	1.69
pH	7.76	0.04	5.37	0.42	7.14	8.82	1.79	1.33
EC (dS/m)	6.62	0.46	78.02	26.65	1.14	17.15	-0.83	0.74
CaCO <sub>3</sub> (%)	9.73	0.27	30.47	8.79	3.04	15.97	1.02	-0.19
OM (%)	2.57	0.16	69.34	3.18	0.81	8.08	5.56	2.60
TN (%)	0.13	0.004	31.07	0.002	0.054	0.337	8.86	2.15
P (mg kg <sup>-1</sup> )	18.88	0.69	40.98	59.88	6.67	52.22	2.38	1.19
K (mg kg <sup>-1</sup> )	38.19	2.306	67.25	659.81	11.9	257.15	44.77	5.80
Zn (mg kg <sup>-1</sup> )	2.36	0.26	122.7	8.42	0.31	19.65	13.45	3.29

#### 3.2. Regression with deep learning (dnn) on randomly selected data, independent of soil classes

Parameters on the dataset are clearly grouped into different soil classes. During deep learning, training, and testing dataset were randomly selected without considering class information. the regression estimation of the "index" parameter using DNN is conducted (Figure 3). The R<sup>2</sup> value of 86.07% was achieved for RM2 after 1,500 epochs on the test dataset. The R<sup>2</sup> values on the test conducted for other network models: RM1 77.77%, and RM3 85.61% The number of network parameters in Model 1 was insufficient, the number of network parameters in RM2 was at the optimum level, and the large number of network parameters in RM3 caused overfitting. Therefore, higher estimation was achieved with the network trained using RM2. The error rate decreased as the number of epochs increased. There was not much change after approximately 250 epochs.



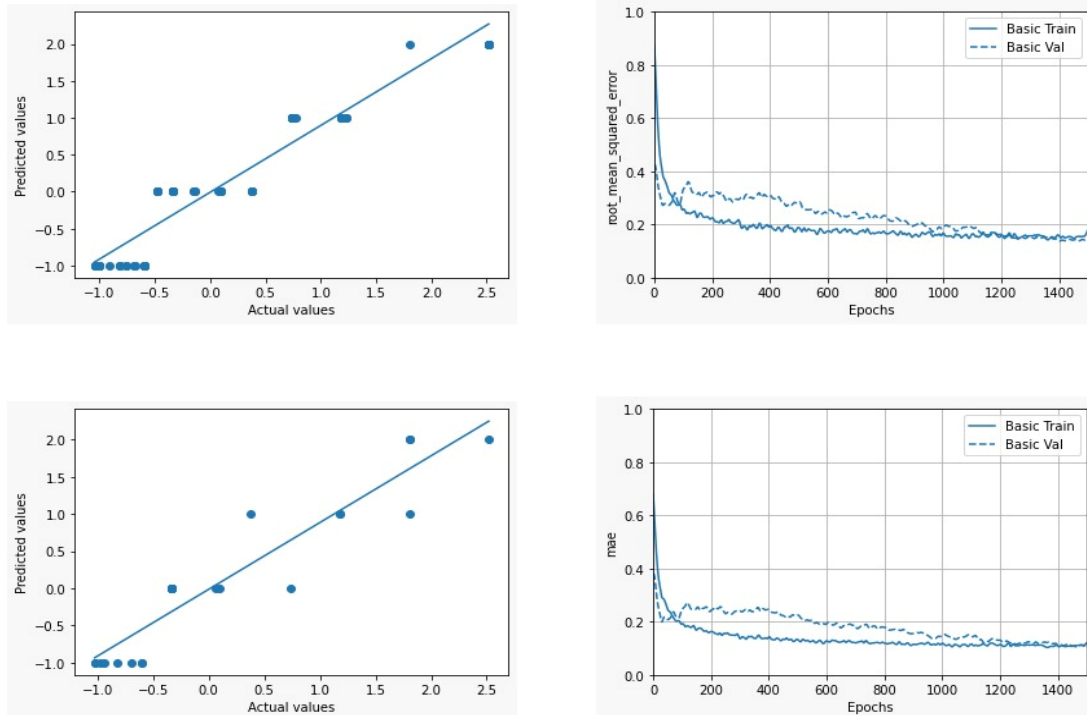


Figure 3. R<sup>2</sup> and error (MAE and RMSE) graphics obtained from RM2 network used for training and test data on the "index" parameter.

According to results obtained in regression estimation using DNN on the "yield" parameter in Figure 4, an R<sup>2</sup> value of 86.61% was obtained on the dataset after 1,000 epochs for RM3. The R<sup>2</sup> values for other network models on the test RM1 81.88%, and RM2 79.61%. A high accuracy rate in estimation is obtained as the number of parameters increases in the network. Therefore, RM3 showed the highest R<sup>2</sup> value. The error rate decreased as the number of epochs increased. After approximately 50 epochs, the training error continues to decrease; however, the validation error decreased in a slower trend.

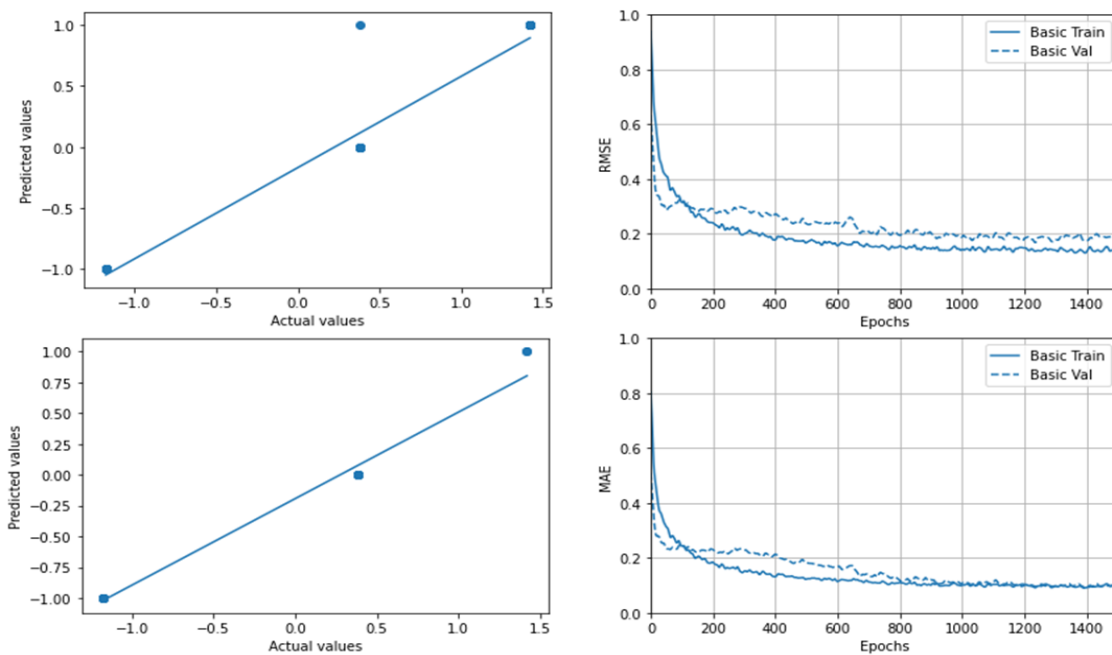


Figure 4. R<sup>2</sup> and error (MAE and RMSE) graphics obtained from RM3 network used for training and test data on the "yield" parameter.

According to results obtained in regression estimation using DNN on the "NAI" parameter in Figure 5, an R<sup>2</sup> value of 84.53% was obtained on the dataset after 1000 epochs for RM2. The R<sup>2</sup> values for other network models on the test were obtained as RM1 81.74%, and RM3 81.07%. The number of parameters in RM2 provided the best estimation success rate for NAI. It also provided a high accuracy rate in the NAI estimation in the other two models. The error rate decreased as the number of epochs increased. There was not much change after approximately 200 epochs.

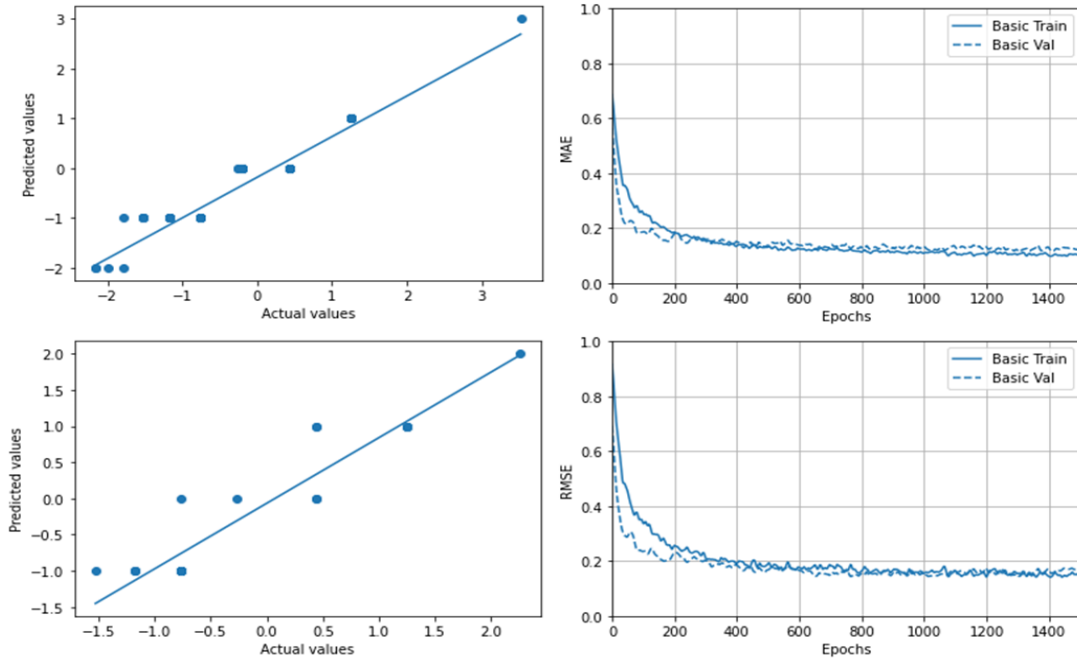


Figure 5. R<sup>2</sup> and error (MAE and RMSE) graphics obtained from RM1 network used for training and test data on the "NAI" parameter.

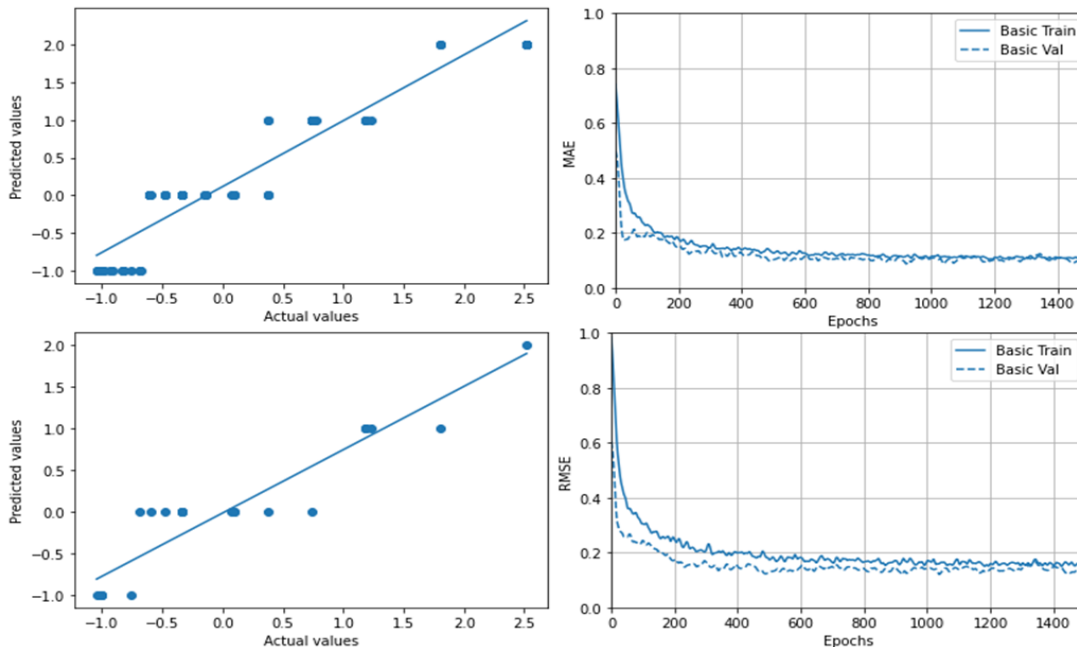


Figure 6. R<sup>2</sup> and error (MAE and RMSE) graphics obtained from RM3 network used for training and test data on "SQI" parameter.

According to results obtained in regression estimation using DNN on the "SQI" parameter in Figure 6, an  $R^2$  value of 87.80% was obtained on the dataset after 1500 epochs for RM3. The  $R^2$  values for other network models on the test were shown to be 83.83% for both RM1 and RM2. Therefore, RM3 indicated the highest  $R^2$  value. The error rate decreased as the number of epochs increased. There was not much change after approximately 200 epochs.

The study found that using the index, efficiency, NAI, and SQI soil characteristics as network outputs led to varying levels of model performance. As a result, various models were recommended for each network output. All of the  $R^2$  values that were obtained for estimating the index, yield, NAI, and SQI parameters were within acceptable bounds.

### 3.3. Regression using deep learning (DNN) on randomly selected data, dependent on soil classes

During deep learning, the training and test dataset were randomly selected depending on the soil class information. The results obtained in this way are given in Table 6.

Table 6.  $R^2$  results of deep learning on randomly selected data dependent/independent of soil classes

	train		test		model	
	(%) Independent	(%) Dependent	(%) Independent	(%) Dependent	Independent	Dependent
Index	88.70	91.49	86.07	91.14	RM2	RM2
Productivity	87.23	88.29	86.61	87.50	RM3	RM3
NAI	89.02	89.00	81.74	87.54	RM2	RM1
SQI	89.50	91.09	87.80	87.54	RM3	RM2
Mean	88.61	89.97	85.56	88.43		

In this sense, selecting samples, considering class information, yields healthier results.

### 3.4. Soil classification using deep learning

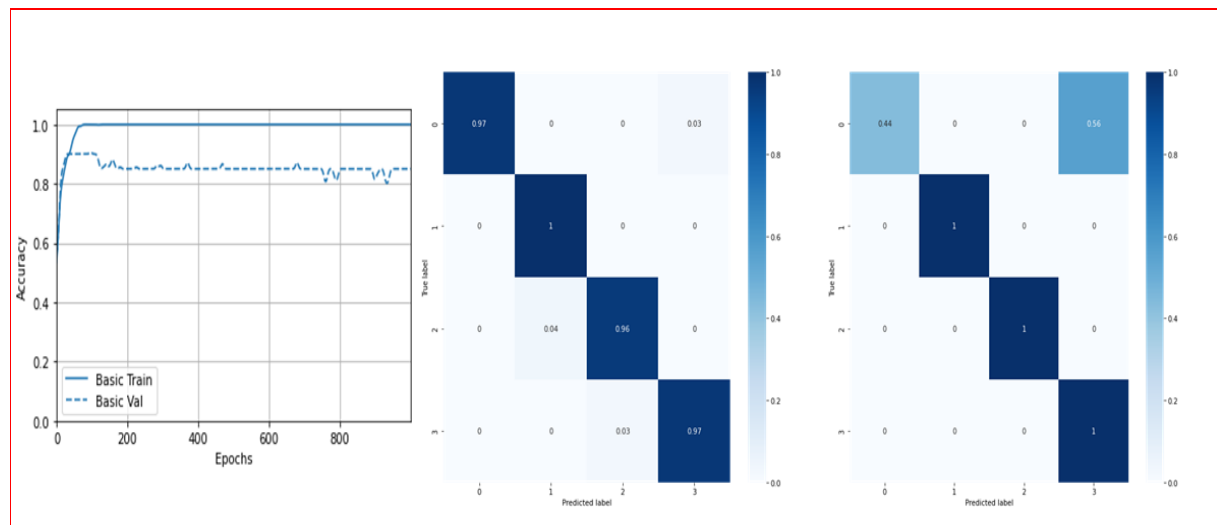


Figure 7. Graphic of Accuracy and Confusion matrix for training and test data for CM1.

In Figure 7, the results obtained from 1,000 epochs are given when CM1 is used to classify the "class" information. A performance rate of 96.97% for training and 80.00% for testing was achieved. The classifying properties generated an error in Class 0. Around 56% of Class 0 samples are classified as Class 3 errors.

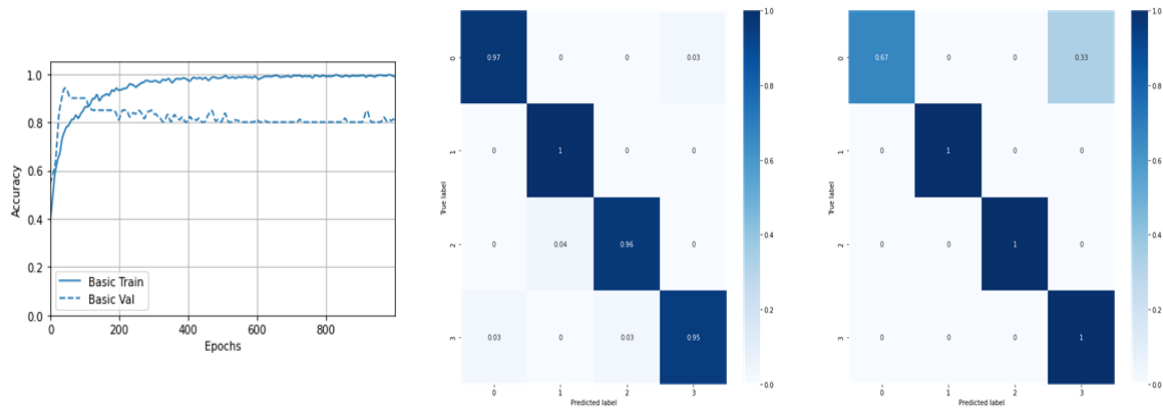


Figure. 8. Graphic of Accuracy and Confusion matrix for training and test data for CM2.

In Figure 8, the results obtained from 1,000 epochs are given when CM2 is used to classify the "class" information. A performance rate of 95.96% for training and 88.00% for testing was achieved. The classifying properties generated an error in Class 0. Around 33% of Class 0 samples are classified as Class 3 errors. The accuracy rate obtained on the test dataset was higher in CM2. Therefore, CM2 should be used in soil classification studies.

### 3.5. Land quality assessment and model verification

In order to form a distribution map of LQIR values for each point identified by the deep learning system, a total of 15 semi-variogram models were applied and the model comparison obtained for RMSE values is given in Table 7. In Table 7, the lowest RMSE value was found to be 0.1095 and the Completely Regularized Spline model, belonging to the Radial Basis Function, was identified. Moreover, in Table 3, a distribution map of the LQIR map, consisting of 4 classes, was created. (Figure 9).

Table 7. Cross validation according to different interpolation models

Criteria	Inverse Distance Weighing IDW			Radial Basis Function RBF					
	1	2	3	TPS	CRS	ST			
LQIR	0.1171	0.1120	0.1098	0.1169	<u>0.1095</u>	0.1096			
Criteria	Kriging Ordinary			Kriging Simple			Kriging Universal		
	Gau.	Exp.	Sph.	Gau.	Exp.	Sph.	Gau.	Exp.	Sph.
LQIR	0.1109	0.1101	0.1101	0.1123	0.1114	0.1109	0.1109	0.1102	0.1101

TPS: Thin Plate Spline, CRS: Completely Regularized Spline, ST: Spline with Tension; Gau.: Gaussian, Exp.: Exponential, Sph.: Spherical.

According to results obtained in the study, it was found that 64.9% of the total land was distributed between suitable (S1) and medium-suitable (S2) classes for rice cultivation while 26.5% was in the marginal class (S3). In addition, a very small part of this land (8.6%) was found to be unsuitable for paddy cultivation. The lands that were found to be unsuitable for rice cultivation were the At.1 mapping unit, belonging to the Adatepe soil series that are classified as Vertic Calcixercept, with shallow soil depth and high slopes, Boztepe (Bz.1) classified as Vertic Haploxerecept, and Bz.2 soil series. The marginal suitability class in terms of land quality is on Dağmatoğlu, Çengeldüzü, Yücekyazısı, and Kumbaba soil series which are respectively classified as Aquic Haploxerecept, Vertic Xerefluent, and Typic Haploxerecept including mapping units Dc.2, Dc.3, Cd.1, Yc.3 and Kb.1 mapping units which were respectively classified as Aquic Haploxerecept, Vertic Xerefluent, and Typic Haploxerecept on Dağmatoğlu, Çengeldüzü, Yücekyazısı, and Kumbaba soil series. The most important limiting feature of these soils is their salinity and coarse texture.

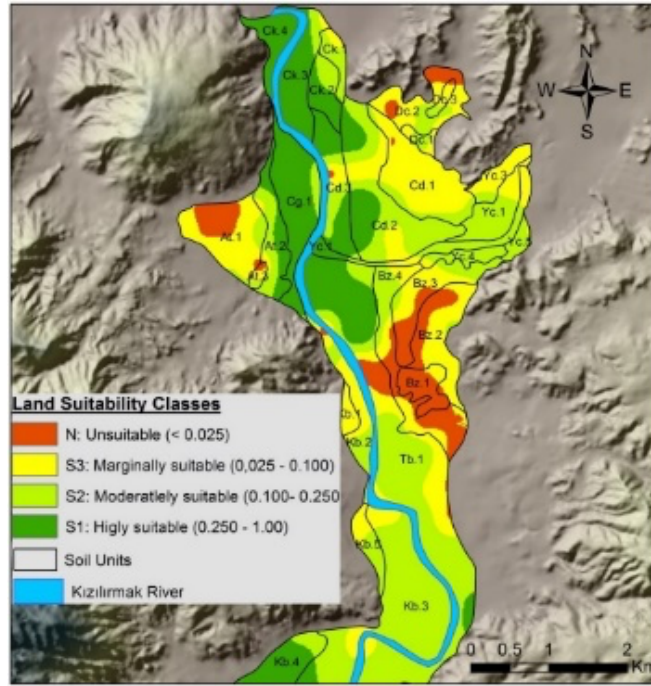


Figure 9. Spatial distribution map of the LQIR.

Table 8. Grain yields (kg ha<sup>-1</sup>) of paddy varieties cultivated in the Çorum-Osmancık (LSD0.05 = 2.07)

Suitability Classes	Variety	Max.	Min.	SD	Mean*
S1	Osmancık-97	8100	8053	17	8078 a
	Neğiş	6135	6015	50	6060 e
	Aromatik	7740	7536	77	7652 b
	Beşer	8365	8002	133	8166 a
	7721	7400	7190	88	7269 c
	Halilbey	7897	7500	165	7748 b
	Gönen	6695	6490	91	6558 d
	Karadeniz	6800	6695	43	6759 d
	Kızılırmak	7840	7368	208	7679 b
	Koral	6310	6140	70	6245 e
	Durağan	7185	6922	100	7036 c
	Şumnu	7383	6940	177	7116 c
S2	Osmancık-97	6150	6045	42	6087 b
	Neğiş	4345	3830	173	4085 h
	Aromatik	2780	2280	210	2595 i
	Beşer	6260	6230	11	6247 ab
	7721	5730	5605	53	5650 c
	Halilbey	6560	6525	53	6480 a
	Gönen	4800	4550	108	4712 g
	Karadeniz	5485	5140	128	5332 d
	Kızılırmak	4135	3825	110	3990 h
	Koral	4955	4870	36	4923 fg
	Durağan	5405	5030	134	5232 de
	Şumnu	5130	4950	72	5058 ef
S3	Osmancık-97	4475	4240	100	4390 b
	Neğiş	2505	2305	78	2423 g
	Aromatik	1805	1645	68	1703 h
	Beşer	4357	3830	185	4079 cd
	7721	4318	4063	87	4187 bcd
	Halilbey	5930	5463	179	5662 a
	Gönen	3830	3275	212	3513 f
	Karadeniz	4515	4155	149	4291 bc
	Kızılırmak	1657	1244	174	1505 i
	Koral	4063	3873	73	3954 de
	Durağan	4075	3650	166	3827 e
	Şumnu	3375	3302	25	3339 f

\*Means followed by the same subscripted letters are not significantly different.

In order to test the model verification, a field trial study was conducted for two years in classes belonging to different rice land quality indices identified within the study area. The yield values of all rice cultivars were affected by their location. The average yield values for S1-class, S2-class, and S3-class were found to be 7,197, 5,032, and 3,572 kg ha<sup>-1</sup> respectively. The difference between S1 and S3 was found to be 3,624 kg ha<sup>-1</sup>. The highest yield was in S1 in the class Beser and Osmancik-97 varieties with 8,166 and 8,078 kg ha<sup>-1</sup> respectively while the lowest yield was obtained in the S3 suitability class in Kızılırmak variety with 1,505 kg ha<sup>-1</sup> (Table 7). According to statistical analysis, the grain yields were significantly affected by LSC and it also affected varieties differently (ANOVA, P < 0.001).

The results of the LSD test are shown in Table 8. For the S1 class, the ranking of paddy varieties for decreasing grain yield was Beser > Osmancik > Halilbey > Kizilirmak > Aromatik > 7721 > Sumnu > Duragan > Karadeniz > Gonen > Koral > Negis. As for the S2 class, Kizilirmak was also observed to have the lowest grain yield for the S3 class. According to grain yield, Beser, Osmancik-97, and Halilbey were the 3 best varieties. The worst varieties are Aromatik, Kizilirmak, and Negis. According to the results, the most suitable class was determined as S1 for growing high grain yield, followed by S2 and S3 classes.

## Conclusion

Considering the land quality distribution for rice, most of the land (64.9%) was found to be suitable for rice cultivation while very few (8.6%) were found to have low land quality, and unsuitable for rice cultivation. The decrease in soil quality due to intensive rice cultivation threatens the sustainability of rice agriculture in the Çorum-Osmancik region. Land quality classes, which are an important factor in agricultural production, have been prioritized in this study, and different physicochemical soil properties have been chosen as input parameters in order to conduct a regression analysis and classification using deep learning. It was found that the selection of training and test samples in the dataset, considering class information, produced high-performance results in estimating soil parameters and identifying land quality classes for rice. In addition, field trials were conducted in order to identify the accuracy levels of defined land quality classes, and results showed that the data were statistically significant according to obtained test results.

## Acknowledgements

The authors declare the contribution of the authors is equal. The authors have declared no conflict of interest.

## References

- Aggarwal, N., & Agrawal, R. K. (2012). First and second order statistics features for classification of magnetic resonance brain images. *Journal of Signal and Information Processing*, 3, (pp. 146-153). 10.4236/jsip.2012.32019
- Akay, H., Sezer, I., Mut, Z., & Dengiz, O. (2017). Yield and Quality Performance of Some Paddy Cultivars Grown in Left Bank of Bafra Plain. *KSU Journal of Natural Science*, 20 (special issue), 297-302. 10.18016/ksudobil.349264
- Araus, J. L., & Cairns, J. E. (2014). Field high-throughput phenotyping: the new crop breeding frontier. *Trends in plant science*, 19(1), 52–61. 10.1016/j.tplants.2013.09.008
- Azizi, A., Gilandeh, Y. A., Mesri-Gundoshmian, T., Saleh-Bigdeli, A. A., & Moghaddam, H. A. (2020). Classification of soil aggregates: A novel approach based on deep learning. *Soil and Tillage Research*, 199,104586. 10.1016/j.still.2020.104586
- Bunting, E. S. (1981). Assessments of the effects on yield of variations in climate and soil characteristics for twenty crop species. Bogor (Indonesia): *Centre for Soil Research*. UNDP/FAO, AGOF/INS/78/006 Technical Note, No: 12.
- Chollet, F. (2020). The Sequential model. [https://keras.io/guides/sequential\\_model/](https://keras.io/guides/sequential_model/). (Online accessed Sept 4th 2020).
- Dedeoğlu, M., Dengiz, O. (2019). Generating of land suitability index for wheat with hybrid system approach using AHP and GIS. *Comput. Electron. Agric.*, 167, 105062

- 10.1016/j.compag.2019.105062 Dengiz, O. (2010). Morphology, Physico-Chemical Properties and Classification of Soils on Terraces of the Tigris River in the South-East Anatolia Region of Turkey. *Journal of Agricultural Sciences*, 16 (3), 205-212.
- Dengiz, O. (2013). Land Suitability Assessment for Rice Cultivation Based on GIS Modeling. *Turkish Journal of Agriculture and Forestry*, 37, 326-334. 10.3906/tar-1206-51
- Dengiz, O. (2020). Soil quality index for paddy fields based on standard scoring functions and weight allocation method. *Archives of Agronomy and Soil Science*, 66(3), 301-315. 10.1080/03650340.2019.1610880
- Dengiz, O., Gol, C., Ekberli, I., & Ozdemir, N. (2009). Determination of distribution and properties of soil formed on different alluvial terraces. *Anadolu Journal of Agricultural Sciences*, 24(3), 184-193.
- Dengiz, O., Ozyazıcı, M. A., & Saglam, M. (2015). Multi-criteria assessment and geostatistical approach for determination of rice growing suitability sites in Gokirmak Catchment. *Paddy Water Environ.* 13, 1–10. 10.1007/s10333-013-0400-4
- DMI, (2019). Turkish state meteorological service. Ankara, Turkey. (Accessed October 4, 2020).
- Esgario, J. G., Krohling, R. A., & Ventura, J. A. (2020). Deep learning for classification and severity estimation of coffee leaf biotic stress. *Computers and Electronics in Agriculture*, 169, 105162. 10.1016/j.compag.2019.105162
- FAO, (1983). Guidelines. Land Evaluation for Rainfed Agriculture. Rome: FAO Soils Bulletin No. 52. (Accessed October 4, 2020).
- FAO, (1985). Guidelines. Land Evaluation for Irrigated Agriculture. Rome: FAO Soils Bulletin No. 55. (Accessed October 4, 2020).
- Garris, A. J., Tai, T. H., Coburn, J., Kresovich, S., & McCouch, S. (2005). Genetic Structure and Diversity in *Oryza sativa* L. *Genetics*, 169(3), 1631-1638. 10.1534/genetics.104.035642
- Goodfellow, I., Bengio, Y., & Courville, A. (2016). Deep Learning. Cambridge: MIT Press, USA.
- Google-Colab, (2020). Google Colaboratory platform. <https://colab.research.google.com>. (Accessed September 4, 2020).
- Goovaerts, P. (1999). Using elevation to aid the geostatistical mapping of rain fall erosivity. *Catena* 34, 227–242. 10.1016/S0341-8162(98)00116-7
- Gupta, R. P., & Abrol, I. P. (1993). A study of some tillage practices for sustainable crop production in India. *Soil Till. Res*, 27, 253–273.
- IBM, (2015). Released 2015. IBM SPSS Statistics for Windows, Version 23.0. IBM Corp., Armonk, NY.
- Jagadish, S. V. K., Craufurd, P. Q., & Wheeler, T. R. (2007). High temperature stress and spikelet fertility in rice (*Oryza sativa* L.). *Journal of Experimental Botany*, 58(7), 1627–1635. 10.1093/jxb/erm003
- Kamilaris, A., & Prenafeta-Boldu, F. X. (2018). Deep learning in agriculture: A survey. *Computers and electronics in agriculture*, 147, 70-90. 10.1016/j.compag.2018.02.016
- Keras, (2020). <https://keras.io/>. (Accessed September 4, 2020).
- Li, X., Li, H., Yang, L., & Ren, Y. (2018). Assessment of soil quality of croplands in the corn belt of Northeast China. *Sustainability*, 1, 1–16. 10.3390/su10010248
- Meral, R., & Temizel, K. E. (2006). Irrigation Applications and Efficient Water Use in Rice Production. KSU. *Journal of Science and Engineering* 9(2), 104-109.
- Mongkolsawat, C., Thirangoon, P., & Kuptawutinan, P. (2002). A physical evaluation of land suitability for rice: a methodological study using GIS. Khon Kaen (Thailand): Computer Centre, Khon Kaen University, Thailand.
- Moron, A. (2005). Indicadores para el diagnóstico de la calidad de suelos en sistemas agrícolas. In: Marelli, H.J. (Ed.), Indicadores de Calidad de Suelo. Seminario Internacional. Marcos Juárez, Argentina.
- Mulla, D. J., & McBratney, A. B. (2000). Soil Spatial Variability A-321-A-351, In: Handbook of Soil Science, Malcolm E. Sumner (Ed. In Chief) CRS Press, USA.
- Mwendwa, S. M., Mbuvi, J. P., & Kironchi, G. (2019). Land evaluation for crop production in Upper Kabete Campus field, University of Nairobi, Kenya. *Chem. Biol. Technol. Agric.*, 6(16), 2-10. 10.1186/s40538-019-0156-1

- Nath, J. A., Charyya, T. B., Ray, S. K., Deka, J., Das, A., & Devi, H. (2016). Assessment of rice farming management practices based on soil organic carbon pool analysis. *Trop Ecol.* 57, 607–611.
- Özkan, B., Dengiz, O., & Demirag Turan, I. (2019). Site suitability assessment and mapping for rice cultivation using multi-criteria decision analysis based on fuzzy-AHP and TOPSIS approaches under semihumid ecological condition in delta plain. *Paddy Water Environ.* 17,655-676. 10.1007/s10333-019-00692-8
- Padarian, J., Minasny, B., & McBratney, A. B. (2019). Using deep learning to predict soil properties from regional spectral data. *Geoderma Regional*, 16, e00198. 10.1016/j.geodrs.2018.e00198
- Rezaee, L., Moosavi, A. A., Davatgar, N., & Sepaskhan, A. R. (2020). Soil quality indices of paddy soils in Guilan province of northern Iran: Spatial variability and their influential parameters. *Ecological Indicators*, 117, 106566. 10.1016/j.ecolind.2020.106566
- Sezer, I., & Dengiz, O. (2014). Application of multi-criteria decision making approach for rice land suitability analysis in Turkey. *Turkish Journal of Agriculture and Forestry*, 1, 926-934. 10.3906/tar-1405-85
- Sezer, I., Senocak, H. S., & Akay, A. (2017). Comparison of Transplanting and Broadcasting Methods in Some Paddy Cultivars. *KSU Journal of Natural Science*, 20 (Special Issue),292-296. 10.18016/ksudobil.349263
- Shrivastava, V. K., Pradhan, M. K., Minz, S., & Thakur, M. P. 2019. Rice Plant Disease Classification Using Transfer Learning Of Deep Convolution Neural Network. *International Archives of the Photogrammetry, Remote Sensing & Spatial Information Sciences*, 1, 631-635.
- Sirat, A., Sezer, I., & Akay, H. (2012). Organic rice farming in the Kızılırmak Delta. *Gumushane University Journal of Science and Technology Institute*, 2(2),76-92.
- Sys, C., Van Ranst, E., Debaveye, I. J., & Beernaert, F. (1993). Land evaluation. Part III: Crop Requirements. General Administration for Development Cooperation, Agricultural publication-No. 7, pp.199, Brussels-Belgium.
- Wilding, L. P., Bouma, J., & Goss, D. W. (1994). Impact of spatial variability on interpretive modeling. In: Bryant RB, Arnold RW, editors. Quantitative modeling of soil forming processes (Vol. 39). Madison: SSSA Special Publication, 65–75. 10.2136/sssaspecpub39.c4