

Strontium Isotopes, Ostracod Fauna, and Paleoenvironmental Characteristics in the Late Miocene Sequence of the Mut/Dağpazarı Region, Southern Turkey

Umit Safak*  Hande Sonsun  Nusret Nurlu 

 Cukurova University, Department of Geological Engineering, Adana, Türkiye

ABSTRACT

The primary focus of this study was the Dağpazarı village in the Mut region of Mersin, southern Turkey. In this research area, two stratigraphic sections were meticulously measured. The study conducted a comprehensive examination of the Middle-Late Miocene period in the Dağpazarı, Ballı, and Mut Formations by analyzing the ostracod fauna and utilizing strontium isotope chemostratigraphic dating. This research determined that the upper levels of the Mut/Köselerli formations, specifically from the Burdigalian to Serravallian, signify the commencement of the Miocene succession in the study area. The Dağpazarı Formation, characterized by abundant silty-clay, *Ostrea* fossils, and lignite layers, is deposited unconformably just above these levels. This formation contains the following ostracod taxa; *Bairdia subdeltoidea*, *C. glypta*, *Cytheridea acuminata acuminata*, *Acanthocythereis hystrix*, *Krithe monosteruensis*, *Neomonoceratina mouliana*, *Hemicyprideis sp.*, *Cistacythereis caelatura*, *Cyherella terguemi*, *T. prava*, *K. langhiana*, *A. ulicznyi*, *Pokornyella deformis minor*, *Loxoconcha alata*, *Tenedocythere salebrosa*. Furthermore, the planktonic foraminifera species are; *O. universa*, *Globigerinoides trilobus*, *Glb. ruber*, *Orbulina bilobata*, *Glb. sacculifer*, *O. suturalis*, and the formation includes abundant bryozoa, echinoid spines, gastropods such as *Terebralia* at distinct levels, and fish otolith. The formation, dating from the late Serravallian to the early Tortonian, exhibits the shallow reef characteristics that continued to develop in the late Miocene. The formation consists of dark green, bulbous weathered claystone, *Bairdia subdeltoidea* and *Ostrea* which are reduced in size at the levels that pass into hard clayey sandstone, abundant benthic foraminifera with abundant echinoid spines. The formation consists of benthic foraminifera, hard clayey sandstone, and weathered dark green claystone, which contains numerous echinoid spines. *Ostrea* and *Bairdia subdeltoidea* are also present. The upper section of the analyzed succession concludes with silty, compact, clayey limestone layers and light-colored limestone bands. The Tirtar Ballı Formation, which conformably overlays the Dağpazarı Formation, signifies the culmination of a relatively recent reef formation during the Tortonian period. Ostracod species such as *Aurila pigadiana*, *Thalmannea hodgii*, *Buntonia sublatissima dertonensis*, *Bairdia subdeltoidea*, *Aurila sp.* *Bassiouni* have been defined. The limestones also contain abundant benthic foraminifera and echinoid spines. The $^{87}\text{Sr}/^{86}\text{Sr}$ ratio analyzed from the carbonate sample obtained from the Dağpazarı formation is 0.708920. Based on these isotope data, the age of the Dağpazarı formation was calculated to be 8.7 million years (Ma).

Keywords:

Mut; Dağpazarı; Planktonic foraminifera; Strontium isotope; Ostracod

INTRODUCTION

The study area is situated in the northern part of the town center of Mut, within the Central Taurus Mountains (Fig. 1). In the initial geological investigations conducted in the research area and its vicinity, particular emphasis was placed on studying

the structural evolution of the region since the Paleozoic, mapping the rock formations, and analyzing tectono-stratigraphic developments. Following this, numerous researchers conducted comprehensive studies in the fields of general geology, paleontology,

Article History:

Received: 2023/02/18

Accepted: 2023/11/29

Online: 2023/12/31

Correspondence to: Umit Şafak,

E-mail: usafako1@gmail.com;

Phone: +05433980699

This article has been checked for similarity.



This is an open access article under the CC-BY-NC licence

<http://creativecommons.org/licenses/by-nc/4.0/>

Cite as:

U. SAFAK, H. SONSUN and N. NURLU, "Strontium Isotopes, Ostracod Fauna, and Paleoenvironmental Characteristics in the Late Miocene Sequence of the Mut/Dağpazarı Region, Southern Turkey" Hittite Journal of Science and Engineering, vol. 10, no. 4, pp. 287-299, 2023. doi:10.17350/hjse19030000318

and stratigraphy [1-23]; [24-33]. Economic geology studies have predominantly focused on oil and coal [34-35]. Furthermore, there has been a significant increase in studies related to carbonate precipitation in Neogene rocks. This research was conducted to provide a comprehensive analysis of the Neogene sediments exposed in the Dağpazarı area, with a primary focus on ostracod fauna. In the Mut Basin, situated in the Middle Taurus Belt, calcareous nannofossil biochronology has been documented in the Mut-Ermenek section, specifically in the Dağpazarı reef. This reef developed as a result of the Miocene marine transgression and is primarily found in the upper sections of the reef, known as the Dağpazarı Formation. Coral biofacies were identified by Gürler [22], and Ilgar et al. [137] documented the late Serravallian to early Tortonian dug valley fill sediments, known as the Dağpazarı Formation [33-23]. The main objective of this study was to conduct a comprehensive analysis, including stratigraphic, chemostratigraphic (Sr isotopic), and micropaleontological examinations, with a specific focus on ostracod fauna. The research highlights the relatively recent reef sediments found in the Dağpazarı Formation, which is the primary subject of this study, as well as the overlying Tirtar/Ballı Formation.

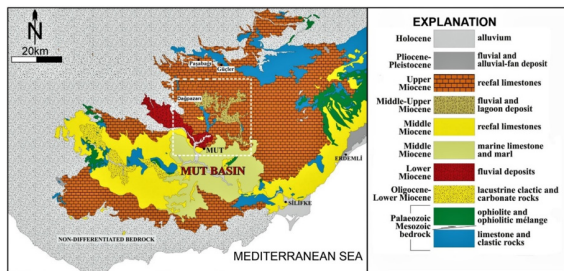


Figure 1. Geological map of the Dağpazarı research area and its vicinity [23].

The ostracod assemblages from the Late Miocene (Tortonian) in this research were examined and compared with ostracod faunas from Late Miocene (Tortonian) studies conducted in other regions of the Eastern Mediterranean in Turkey. Additionally, isotope data reported from nearby areas were analyzed in conjunction with the data obtained in this study. Ostracod assemblages from the Tortonian period in these Eastern Mediterranean-origin basins, namely Antalya/Serik, Mut, Mut/Dağpazarı, Karaman, Silifke-Erdeмли/Mersin, Adana, and Antakya basins, were compared with the ostracod assemblage in this study. It was observed that they shared similar species. This study elucidates the formation of a young reef during the Tortonian period in the Adana Basin (Kuzgun Formation) [36], as well as in Silifke-Erdeмли (Sarıaydın Formation) [37]. Similar depositional conditions and young reef characteristics were also identified in the Antakya Basin (Nurzeytin Formation) [38-39] (Fig. 8).

MATERIAL AND METHODS

Paleontological Analysis

The research was carried out on the 1/25000 scaled Mersin O30b3 map sheet. Measured sections were taken from two different areas in Dağpazarı Village and 50 washing samples were collected for micropaleontological analyses. The laboratory washing method was performed to obtain the ostracod fauna. 150 grams of each of the hard and moderately soft samples obtained from the sections were taken and divided into small pieces by placing them between thick paper and hitting them with a hammer. Crumbled samples were placed in 1-liter glass beakers and hot water and 15% diluted hydrogen peroxide (H_2O_2) were added to disintegrate and left for 24 hours to dissolve. The samples have been washed under pressurized water with a set of 60, 120, 230 mesh sieves and then dried in an oven and put into separate bags according to their sieve numbers. After the separation of the microfossils contained in the samples from the grains, the genus and species of the samples collected in the collection slides were determined. 28 ostracod genera and 44 taxa have been defined in the research.

Identified species and genera have been counted, lateral and vertical distribution of ostracods have been enumerated and their numerical abundances have been defined. Symbols describing the semiquantitative frequency of ostracods are used in this distribution table. Very rare (1-2 cover) ve rare (3-5 cover) frequencies are denoted by symbols such as r + and o, common (6-15 cover), frequent (16- 25 cover) and very frequent (>25 cover) and frequencies ●, □, ■. Paleoenvironmental interpretation of the research area was conducted based on the statistical and relative data. This interpretation was carried out in accordance with previous works by Morkhoven [110], Doruk [111], Bassiouni [112], and Freels [40-43]. Plate 1-2 was created by choosing scanning electron microscope (SEM) images of specific ostracod species and genera that were identified in these studies.

Petrographical and Isotopical Analyses

Thin sections of the samples were analyzed using binocular microscopes under polarized light (Leica DMPEP). Subsequently, these thin sections were further examined using an optical microscope that utilized both transmitted and reflected light. Two of the most commonly utilized classifications are those developed by Folk and Dunham [44-45,46]. The thin sections of the limestones from the Dıvlek and Maz Formations were prepared by the Department of Geological Engineering at Çukurova University. The petrographic examination was conducted using the Leica DMPEP microscope at Çukurova University. Strontium isotope geochemistry experiments were carried out at the Radiogenic Isotope Laboratory, R & D Training, and Mea-

surement Center of METU (Sr Isotope Ratio Analysis Experimental Instruction), following the detailed procedures and conditions outlined by Köksal et al. [47]. The isotope analyses were conducted by METU and involved using ultrapure water and chemicals. Weighing, chemical dissolution, and chromatographic operations were performed in a clean laboratory setting that met class 100 cleanroom standards. Specifically, certain sedimentary (limestone) samples underwent $^{87}\text{Sr}/^{86}\text{Sr}$ isotopic analyses at the METU Central Laboratory's Radiogenic Isotope Laboratory in Ankara, following the analytical techniques outlined by Köksal and Göncüoğlu [48].

RESULTS

Stratigraphy

The Miocene units in the research region can be listed from bottom to top as follows: Langhian-Serravalian Mut Formation, late Serravalian-early Tortonian Dağpazarı Formation, and Tortonian Tirtar/Balı Formation (Fig. 2).

Lithostratigraphy

Mut Formation

The Mut Formation was initially named by Sezer [119], and later Gedik et al. [34] also used this name [49, 34]. The reefal Mut Formation can be correlated with the fol-

lowing formations: Silifke Formation [27], Göktepe Reef Limestone Member defined around Ermenek-Karaman [11], Mut Formation around Ermenek [50], and Karaisalı Formation in the Adana Basin [51]. The Mut Formation is characterized by reefal limestone and is found at the base of the succession in a relatively low thickness in this study. The age of the formation has been defined by different researchers as late Burdigalian-Langhian [23], Langhian-Serravalian [28-30,17], Middle Miocene [19-21], and late Serravalian-Tortonian [22]. When analyzing the age of the Mut Formation based on the age given by the overlying unit in this study, it is reported as Burdigalian-Serravalian (Fig. 3).

Dağpazarı Formation

The Dağpazarı Formation was initially defined by Atabey et al. [87], while Gedik et al. [34] referred to it as the Köseliler Formation [17,34]. This formation begins with silt, clay, and clayey limestone, and includes oostreal silty and sandy layers, greenish claystone with vegetation, and lignite. Towards the upper part of the succession, there is a lithological transition to fossiliferous sandstones and hard clayey sandstones (Fig. 2).

The age of the Dağpazarı Formation has been previously reported as Serravalian [17] and late Serravalian-Tortonian [23]. In this study, the age of the formation was determined as late Serravalian-early Tortonian, primarily based on the ostracod content and supported by strontium isotope data.

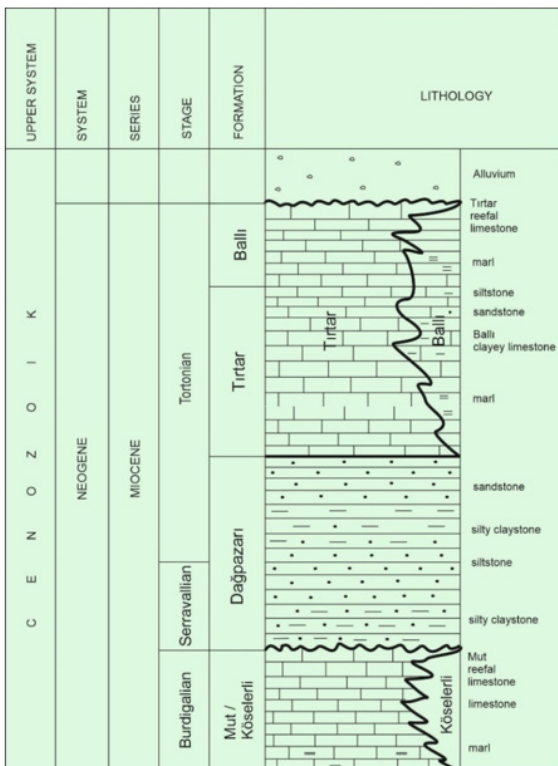


Figure 2. Generalized stratigraphic section of the research region of Dağpazarı [47].



Figure 3. a. General view of the outcrops of Mut formation (view to north) b-c. General outcrop of Dağpazarı formation and clayey limestone.

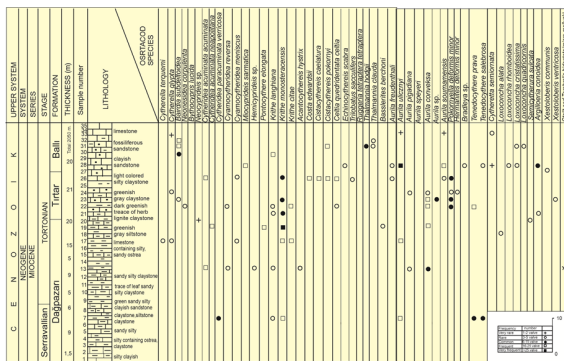


Figure 4. The distribution of the ostracod species in the Dağpazarı I measured stratigraphic section.

Tırtar Formation

The Tırtar Formation was initially named by Atabey et al. [87]. This unit is characterized by limestone as the predominant lithology and contains algae, corals, benthic foraminifers, and mollusks [17]. Atabey et al. [87] and Ilgar et al. [93] proposed the age of the formation as Tortonian (Fig. 2) [17,34]. In this study, a predominant consideration of ostracod content and strontium isotope data led to the determination of the formation's age as Tortonian.

Ballı Formation

Atabey et al. [87] the unit was named for the first time and this name was given because the type section location is in the village of Ballı [17]. Planktonic foraminifera and nannoplanktons have been defined in the formation where claystone, marl and clayey limestone form the dominant lithology (Fig.2). Atabey et al. [87] found *Globigerinoides obliquus extremus* in the unit [17]. In addition, Ilgar et al. [93] suggested the age of the formation as Tortonian [23]. In this study, when the ostracod content and strontium isotope data are evaluated predominantly, the age of the formation is considered as Tortonian.

Measured Stratigraphic Sections

Stratigraphic sections were measured from two distinct ridges by selecting strategic locations within the research area. These locations offered the best exposure of successions providing Late Miocene age information in the Dağpazarı region.

Dağpazarı I Measured Stratigraphy Section

The section was measured between coordinates X1: 36.829371, Y1: 33.464047, Z1: 1287 m, and X2: 36.828976, Y2: 33.464154, Z2: 1492 m, with a total thickness of 205 meters. The section begins at the base with ostreid-rich, clayey, and silty layers belonging to the Dağpazarı Formation. As we move upwards, it transitions into weathered, greenish-gray claystone, silty clay, and fossiliferous clay-siltstone layers. Above this, the Tırtar/Ballı Formation is found, showing a smooth transition. The upper part of the succession is characterized by clayey sandstone, fossi-

liferous clayey sandstone, which remains relatively intact. This formation characterizes a reef in unweathered silty, clayey limestone (Tırtar) and upwardly unweathered limestone (Ballı) lithology. The following ostracod taxa were reported at the base levels of the Dağpazarı Formation in the section: *Cytherella terguemi*, *Cytheridea acuminata acuminata*, *Cytheridea acuminata verrucosa*, *Krithe monosteracensis*, *Krithe langhiana*, *Aurila ulicznyi*, *Cytherella glypta*, *Cytheridea acuminata neapolitana*, *Miocyprideis sarmatica*, *Hemicyprideis sp.*, *Krithe monosteracensis*, *Krithe citae*, *Aurila convexa*, *Ruggieria tetraptera tetraptera*, *Aurila soummamensis*, *Tenedocythere salebrosa*, *Pokornyyella deformis minor*, *Tenedocythere prava*, *Echinocythereis scabra*. In the upper levels, *Bairdia subdeltoidea*, *Thalmannia hodgii*, *Thalmannia clauda*, *Aurila soummamensis*, and *Aurila ulicznyi* were identified in the middle level of the formation. At the bottom levels, gastropods like *Terebralia* and fish otoliths were found. It's also notable that there is an increase in shallowing, and lagoonal conditions seem to dominate the environment. The ostracod genera identified in this formation generally suggest an epineritic environment, including *Ruggieria*, *Tenedocythere*, *Cytheretta*, *Aurila*, and *Pokornyyella*. Additionally, ostracod species that typically indicate infraneritic environments, like *Krithe*, *Echinocythereis*, and *Buntonia*, have also been reported. The presence of ostracod species characterizing lagoon-littoral environments suggests a transitional feature from very shallow marine conditions to partially deep-sea conditions, including species like *Hemicyprideis*, *Loxoconcha*, and *Loxocorniculum*. Hence, it can be concluded that there is data indicating the presence of reef front and back textures in the Late Miocene (Tortonian) sequence. Shallow-water (epineritic depth) ostracod species like *Bairdia subdeltoidea*, *Aurila ulicznyi*, and *Aurila soummamensis* symbolize the reef's back and roof within the clay layers between the limestone beds of the Tırtar/Ballı Formation.

In the stratigraphic section, the Tırtar/Ballı Formation contains a wealth of bryozoa, echinoid spines, and gastropods, including *Terebralia*, which is also observed at various levels within the section.

Dağpazarı II Measured Stratigraphy Section

The section was measured between coordinates X1: 36.826641, Y1:33.460034, Z1:1315 m., and X2: 36.826871, Y2:33.461080, Z2:1420 m. The section has a total thickness of 135 m and consists of cream-colored clayey limestone, clayey limestone-sandstone alternation, and sandstone belonging to the Dağpazarı Formation, which are observed at the lower, middle, and upper levels of the succession. The Dağpazarı Formation is succeeded by the reefal Tırtar/Ballı Formation, which consists of claystone, hard clayey limestone, and hard limestone, conformably overlaying it (Fig.5).

The ostracod species observed at the base levels of the Dağpazarı Formation in the section include *Cytherella glypta*, *Neonesidea corpulenta*, *Bairdoppilata supradentata*, *Neomonoceratina mouliana*, *Ruggieria tetraptera tetraptera*, *Aurila convexa*, *Aurila albicans*, *Aurila soummamensis*, *Aurila woodwardii*. Planktonic foraminifera species reported at the base of the section comprise *Trilobatus sacculifera*, *Orbulina suturalis*, *Morozovella angulosa*. Planktonic foraminifera species identified in the middle and upper levels include *Cytherella terquemi*, *Aurila sp.* Additionally, ostracoda species such as *Globigerinoides ruber*, *Orbulina bilobata*, *Orbulina suturalis*, *Orbulina universa* have been reported. The ostracod species identified in the claystone and clayey limestone levels of the Tirtar/Ballı Formation include *Aurila convexa*, *Krithe langhiana*, *Pokornyella deformis minor*, *Ruggieria tetraptera tetraptera*, *Acanthocythereis hystrix*, *Aurila speyeri*, *Aurila soummamensis*, *Aurila ducasseae*, *Tenedocythere mediterranea*, *Loxococoncha tumida*, *Argilloecia conoidea* (Fig.5). This assemblage characterizes the reef lagoon and the core of a young reef, indicating that the section is influenced by lagoon-littoral conditions as well as the neritic marine environment.

Strontium Isotope Chemostratigraphy

Strontium isotope chemostratigraphy plays a crucial role in deciphering the Earth's geological history. The $^{87}\text{Sr}/^{86}\text{Sr}$ pattern in seawater can be employed for robust correlations when other chemostratigraphic, lithostratigraphic, or biostratigraphic indicators prove to be inadequate. The accuracy of reconstructing seawater strontium isotopes depends significantly on two factors: the quality and reliability of chronological control in the reference data and the preservation of the samples, both of which can vary with the age of the period under examination.

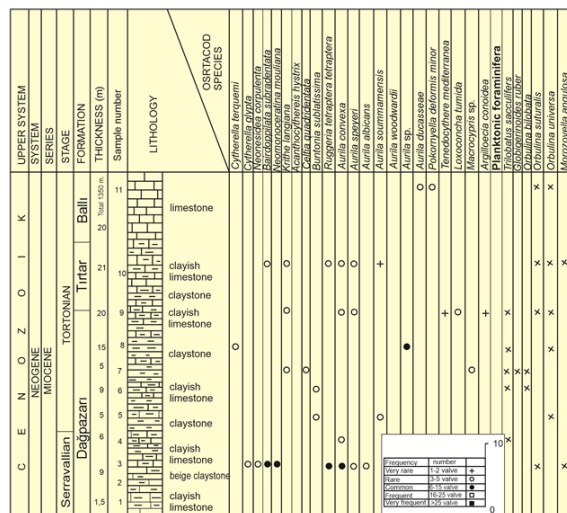


Figure 5. The distribution of the ostracod species in the Dağpazarı 2 measured section

Marine strontium ratios ($^{87}\text{Sr}/^{86}\text{Sr}$) have evolved over the Earth's history, primarily driven by the interplay between unradiogenic strontium sourced from the Earth's mantle and radiogenic strontium from terrestrial input (continental crust) [54-55], as illustrated in Fig. 6 [52-53].

Three samples (Dp-1; 0,708920±15, Dp-2; 0,709644±8, Dp-3; 0,709733±7) were gathered from the studied area in order to analyze strontium and two of these samples did not yield results due to effects such as contamination and diagenesis. The ratio of $^{87}\text{Sr}/^{86}\text{Sr}$ analyzed from the limestone sample collected from the Dağpazarı formation is 0.708920. The age of the Dağpazarı formation was estimated as 8.7 Ma based on these isotope data.

DISCUSSION

Ostracod fauna-based correlation of Late Miocene (Tortonian) lithostratigraphic units of the study area with other Late Miocene (Tortonian) lithostratigraphic units in the Eastern Mediterranean region of Turkey is depicted in Fig. 7.

Antalya (Serik), Karpuzçay Formation

Karpuzçay formation was first named and reported by Akay et al. [57]. The type locality of the formation is Karpuzçay Village in the Antalya Miocene Basin. This formation comprises siltstone, thin-bedded sandstone, and sandy limestone alternations. The ostracod assemblage identified in the formation includes *Bairdia subdeltoidea*, *Miocyprideis sarmatica*, and *Aurila soummamensis* [57-58] (Fig.8).

Dağpazarı/Mut, Dağpazarı and Tirtar/Ballı Formations

The Dağpazarı/Mut, Dağpazarı, and Tirtar/Ballı formations were initially named by Atabey et al. [17]. The Dağpazarı Formation is characterized by clayey, weathered, greenish-gray siltstone at its base, which transitions into oostreal-bearing clayey siltstone, and further up

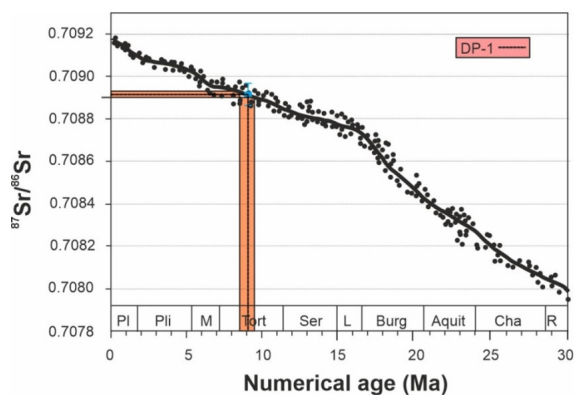


Figure 6. Strontium isotope variation curve for the Miocene interval [56].

within this formation includes the following genera and species: *Cytherella vandenboldi*, *C. creutzburgi*, *C. sordida*, *C. seminulum*, *Neomonoceratina acupicta*, *N. interiecta*, *Miocyprideis sarmatica*, *Parakrithe robusta*, *Cyprideis anatolica*, *Krithe monosteracensis*, *C. pannonica*, *Cytheridea acuminata acuminata*, *Cistacythereis pokornyii*, *C. caelatura*, *Loxoconcha tumida*, and *Paracypris polita*. The age of the Saraydın Formation was given as Tortonian? [27] (Gökten, [97]) and Late Serravallian-Tortonian [37], (Fig.8).

Kuzgun (Adana) Formation

The Formation (Adana) Formation was originally defined by Schmidt [51], and its type locality is situated in Kuzgun Village along the Adana-Karaisalı road. This formation is characterized by a transition from meandering river sediments at the base to shallow marine conditions in the upper levels. During the Tortonian, the region experienced sea level fluctuations, with alternating rises and falls [61]. Within this formation, you can find substantial fossiliferous greenish claystone, light-colored clayey limestone, and well-sorted yellowish-cream colored sandstones with a reefal character, particularly at the İncirlik locality, situated to the southeast of Adana [36]. The ostracod community in this formation is exceptionally diverse, including the following species: *Cytherella vulgata*, *C. glypta*, *Neomonoceratina mouliana*, *Schneidrella dromas*, *Cyamocytheridea meniscus*, *Carinocythereis antiquata antiquata*, *Aurila soummamensis*, *Loxoconcha rhomboidea*, *Paracypris polita*. The formation is attributed to the Tortonian age [36,61-62].

Nurzeytin (Antakya Basin) Formation

The Nurzeytin Formation in the Antakya Basin was initially designated by Selçuk in [63]. The type locality is situated in the vicinity of Nurzeytin, Yazır, Sivrikavak, and Babatorun. This formation is characterized by reef-like lithologies including sandstone, clayey limestone, marl, and claystone. The ostracod assemblage in this formation is highly diverse, and the following taxa have been identified: *Cytherella glypta*, *Cyprideis torosa*, *Acaocythereis hystrix*, *Aurila convexa*, *A. speyeri*, *Hermanites haidingeri minor*, *Ruggieria tetraptera tetraptera*, *Tenedocythere prava*, *T. mediterranea*, *Xestoleberis ventricosa*, *X. communis*. The formation has been suggested to span the Late Serravallian-Tortonian and Tortonian ages [38-39,63]. From these descriptions, it's clear that the Tortonian development in these six significant locations in the Eastern Mediterranean Region of Anatolia is remarkably similar in terms of lithology, environmental conditions, and ostracod fauna. The ostracod fauna of the Dağpazarı Formation in this new study closely resembles the ostracod species identified from these six locations, with the exception of *Cyprideis* species, which were not encoun-

tered in this study. The environment exhibits distinct back-reef facies characteristics with lagoon-like *Neocyprideis* and lagoon-litoral ostracod species like *Hemicyprideis* and *Loxoconcha*. It also displays distinct shallow reef front and core characteristics with ostracod genera adapted to epineritic depths, such as *Acanthocythereis*, *Aurila*, *Pokornyella*, *Tenedocythere*, *Neomonoceratina*, *Pontocythere*, and *Ruggieria*. Furthermore, ostracod genera indicative of infraneritic depths and bathyal environments, such as *Macrocypris*, *Argilloecia*, *Bythocypris*, *Krithe*, and *Bradleya*, are typical of deep reef front facies (Fig. 7). The Mut Basin is situated in the Eastern Mediterranean region of the Alpine-Himalayan Mountain Belt (AHMB) and in the Central Taurus sector of the Taurus Mountains in southern Turkey.

The late Burdigalian marine transgression led to the submersion of the Antalya, Mut, and Adana basins, initiating the deposition of the first marine sediments in these basins during the Neogene. Consequently, the Burdigalian-Serravallian period witnessed the formation of the reefal limestones of the Mut Formation and the marl-clay limestones of the Köselirli Formation in the Mut Basin. As a result of the decrease in sea level in the Late Serravallian, the basin started to become shallow and a young reef deposition took place on the Mut formation reef limestones in the Late Serravallian-early Tortonian. This unit is the Dağpazarı Formation, and the reef limestones of the Tirtar Formation and the layered limestones of the Ballı Formation were deposited on the unit in the north of the Mut Basin. In the vicinity of Dağpazarı Village, the sedimentary layers consisting of mudstone, silty claystone, and sandstone that overlay the Mut Formation were initially considered part of the Köselirli Formation and examined. However, due to variations in lithology, deposition environment, and age, these layers were later designated as the Sertavul Formation. The formation typically represents a lagoon environment situated behind the reef. It is occasionally associated with fluvial deposits, coastal sand, coal seams, and limestone deposits. This rock unit has been identified as the Dağpazarı Formation, indicating its characteristics of a back-reef lagoon and alluvial fan environment. [17]. It was also stated by these authors that the Dağpazarı formation is transitional with the Köselirli and Mut formations deposited in the completely regressive phase of the sea. Early-middle Miocene sea level changes in the Mut Basin have also been studied, but clear data are not available [20, 22].

It is detailed that an incised valley, formed as a result of the late Serravallian eustatic sea-level decline, is observed, where the Dağpazarı Formation overlies the Mut reefal limestones with erosive unconformity [23]. It is mentioned that the sedimentary facies identified in the formation were deposited within this valley, following a subsequent relative

sea-level rise that occurred in the early Tortonian. A comprehensive study of planktonic foraminifera was conducted using mudstone and marl samples obtained from the Dağpazarı and Ballı Formations.

The study employed Mediterranean planktonic foraminiferal biostratigraphy and the ATNT52004 magnetic chronostratigraphy table to determine the Serravallian and Tortonian ages. It was also noted that due to the isostatic uplift of the Taurus Mountains in the late Tortonian, marine sedimentation in the Mut Basin ceased, leading to the exposure of the basin [65-67]. In this research, the fossil content of the unconformable Dağpazarı Formation overlying the Mut limestones at the base and the Tirtar/Ballı Formations, based on the ostracod fauna, was documented. These three lithological units (Dağpazarı, Tirtar/Ballı Formations) have developed with a young reef character and contain ostracod genera and species that accurately represent the back-reef-lagoon, core, and fore-reef facies.

In this new study, the Dağpazarı Formation exhibits a lagoon character with ostracod species like *Neocyprideis*, while the back reef is characterized by ostracod species such as *Hemicyprideis* and *Loxoconcha*, displaying lagoon-littoral characteristics. Additionally, the shallow reef fore-core is marked by ostracod genera with epineritic depth, including *Acanthocythereis*, *Aurila*, *Pokorniyella*, *Tenedocythere*, *Neomonoceratina*, *Pontocythere*, and *Ruggieria*. The deep reef front is identified by ostracod genera with infraneritic depth, including *Macrocypris*, *Argilloecia*, *Bythocypris*, *Krithe*, and *Bradleya*. Additionally, this study identified significant genera indicative of lagoon sediments and marine input. [23].

The study notably provided a comprehensive presentation of the ostracod genera and species specific to the fore-reef facies, marking the first such detailed account in this research. Additionally, banded levels of *Ostrea* were identified in the littoral sections of the middle levels of the Dağpazarı Formation. The presence of the genus *Ostrea* is recognized as an indicator of shallowing in the environment [68-69]. This study was conducted in a succession characterized by the deposition of a young reef, which culminated in the Tortonian age in the northern part of the Mut Basin.

CONCLUSIONS

This study was conducted in and around Dağpazarı Village, located to the north of the Mut Basin. The research area includes sandy, clayey, silty, fossiliferous, and relatively younger sequences that overlay the Mut limestones (Mut Formation). The fossil content of the Dağpazarı, Tirtar/Ballı formations, which are very thin and unconformably emplaced on the Mut formation, has been revealed by predominantly using the ostracod assemblage and

strontium isotopic data. Within this assemblage, ostracod genera indicative of a deepening neritic environment with a shallow neritic core, along with a littoral reef next to a lagoon, have been identified. This reefal succession, which originated during the Tortonian, has been investigated from lithological, chronostratigraphic, and chemostratigraphic perspectives. Furthermore, the ostracod assemblages from late Miocene (Tortonian) studies within the Eastern Mediterranean bioprovince of Turkey were also compared. In the lithostratigraphic and chronostratigraphic correlation from west to east, it was observed that the ostracod assemblages in the Tortonian of the Antalya, Mut, Karaman, Silifke-Erdemli, Adana, and Antakya basins closely resemble the ostracod assemblages found in the Tortonian of the Dağpazarı region.

Late Miocene reef-like sedimentary deposits with young reef characteristics were identified in the Late Tortonian (Miocene) successions within the Antalya, Dağpazarı/Mut, Karaman, Silifke-Erdemli, and Adana Basins, which are part of the Turkey-Eastern Mediterranean Province.

The ostracod assemblage has confirmed that the late Miocene (Tortonian) sediments in the Antakya Basin exhibit a shallow reefal character, characterized by creamy-white clayey units and marls. The $^{87}\text{Sr}/^{86}\text{Sr}$ ratio obtained from the carbonate sample within the Dağpazarı Formation is 0.708920. Based on this isotope data, the age of the Dağpazarı Formation has been calculated as 8.7 million years (Ma).

ACKNOWLEDGEMENT

Financial support for this research was generously provided by the Çukurova University Research Foundation under Project No: FBA-2021-13446. We would like to express our gratitude to two anonymous reviewers for their valuable comments, which have greatly improved this paper. We extend our thanks to Dr. Köksal for conducting the strontium isotopic analyses.

CONFLICT OF INTEREST

Authors approve that to the best of their knowledge, there is not any conflict of interest or common interest with an institution/organization or a person that may affect the review process of the paper.

AUTHOR CONTRIBUTION

The authors shared all the roles and contributed equally to the paper.

REFERENCES

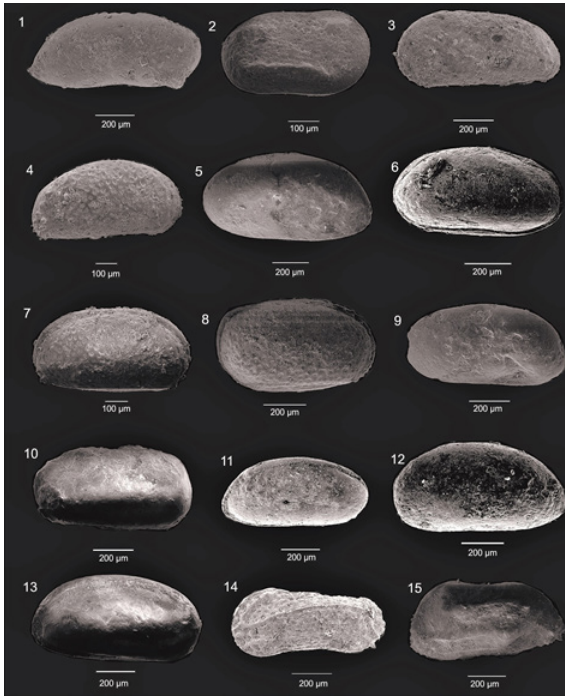
1. Blumenthal, M.M., Niğde ve Adana vilâyetleri dahilinde Torosların jeolojisine umumi bakış. Maden Tetkik Arama Enst., Ankara, No 8, 48 s., 1941.
2. Blumenthal, M., Schichtfolge und Bauder Taurusketten im Hinterland Von Bozkır: Rev. Fak. Sc. Üniv., İstanbul, Serie B,t. IX, fasc., 2, 1944.
3. Blumenthal, M., Recherces géologiques dansle Taurus occidental dans l'arriere-pays d'Alanya. MTA Enst. Yay. Seri D., No: 5, 134 s., 1951.
4. Blumenthal, M., Géologie des Hohen Bolkardağ, seiner nördlichen Randgebiete und westlichen Ausläufer. Veröff des Inst. M. T. A., Serie D, No. 7, 1955.
5. Blumenthal, M., Karaman-Konya havzası güneybatısında Toros kenar silsileleri ve şist-radyolarit formasyonunun stratigrafi meselesi. Maden Tetkik Arama Dergisi No 48, s. 1-36, 1956.
6. Blumenthal, M., Gülek Boğazı-Tarsus ile SilifkeMut arasındaki sahanın (Güney Anadolu Torosları / Kilikya Zonu) tabaka serileri ve yapısı. MTA Derleme Rapor No : 2590, Yayınlanmamış, 1961.
7. Akarsu.İ., Mut Bölgesi Jeolojisi. Maden Tetkik Arama Dergisi, Cilt 54, s.35-35, 1960, Ankara.
8. Niehoff, W., Mut 126/1 numaralı harita paftasının revizyon neticeleri hakkında rapor. MTA Derleme rapor no: 3390 (yayımlanmamış), 1960.
9. Özgül, N., Orta Torosların Kuzey Kesiminin Yapısal Gelişiminde Blok Hareketlerinin Önemi. Türkiye Jeoloji Bülteni, 14 (1), 85-101, 1971.
10. Özgül, N., Torosların bazı temel jeoloji özellikleri; Türkiye Jeol. Kur. Bült., 19/1, 65-78, 1976.
11. Koçyiğit, A., Karaman-Ermenek (Konya) Bölgesinde ofiyolitli melanj ve diğer oluşuklar. TJK Bülteni, 19: 103-116,1976.
12. Koçyiğit, A., Karaman-Ermenek arasındaki bölgenin tektoniği. Türkiye Jeoloji Kur. Bült., 20-1, 1-8,1977.
13. Şaroğlu, F., Boray, A., Özer, S., ve Kuşçu, İ., Orta Anadolu'nun Neotektoniği Üzerine Bazı Görüşler. Türkiye jeoloji Kurultayı Bildiri Özetleri,1982.
14. Şaroğlu, F., Boray, A., Özer, S., Kuşçu, İ., Orta Toroslar – Orta Anadolu'nun Güneyinin Neotektoniği İle İlgiliGörüşler. Jeomorfoloji Dergisi, S:11, s:35-44, 1983.
15. Demirtaşlı, E., Gedik, İ., İmik, M. Ermenek batısında Göktepe-Dumluğöze ve Tepebaşı arasında kalan bölgenin jeolojisi. Maden Tetkik ve Arama Genel Müdürlüğü Rapor No: 5783, Ankara (yayımlanmamış), 1986.
16. Pampal, S., Ayrancı Havzasında metamorfik Bolkar grubu ve Tersiyer oluşukları. Gazi Üni-versitesi Mühendislik Mimarlık Fakültesi Dergisi, 2 (2), 99-115, 1987.
17. Atabey, E., Atabey, N., Hakyemez, A., İslamoğlu, Y., Sözeri, Ş., Özçelik, N.N., Saraç, G., Ünay, E., Babayiğit, S., Mut-Karaman arası Miyosen havzasının litostratigrafisi ve sedimantolojisi (Orta Toroslar). Maden Tetkik Arama Enstitüsü Dergisi, Sayı 122, s. 53-72, 2000.
18. Gül, M. And Eren, M., The Sedimentary Characteristics of Dağpazarı Patch Reef (Middle Miocene, Mut- İçel/ Turkey). Carbonates and Evaporites, v. 18, No. 1, 2003, p. 51- 62,2003.
19. Mandic O., Harzhauser M., Schlaf J., Piller W. E. Schuster F., Wielandt-Schuster U., Nebelsick J.H., Kroh A., Rögl F., Bassant P., Palaeoenvironmentalreconstruction of an epicontinental flooding-Burdigalian (early Miocene) of the Mut Basin (southern Turkey). Courier Forschungsinstitut Senckenberg 248, 57- 92, 2004.
20. Bassant, P., van Buchem, F.S.P., Görür, N. The stratigraphic architecture and evolution of the Burdigalian carbonate-siliciclastic sedimentary systems of the Mut Basin, Turkey. Sedimentary Geology 173, 187–232, 2005.
21. Şafak, Ü., Kelling, G., Gökçen, N. and Gürbüz, K., The mid-Cenozoic succession and evolution of the Mut basin, southern Turkey, and its regional significance. Sedimentary Geology, 173(1):121-150, 2005.
22. Cipollari, P., Halasova, E., Gürbüz, K., Cosentino, D., Middle-Upper Miocene paleogeography of southern Turkey: insights from stratigraphy and calcareous nannofossil biochronology of the Olukpınar and Başyayla sections (Mut-Ermenek Basin). Turkish Journal of Earth Sciences 22, 820–838,2013.
23. Ilgar,A.,Esirtgen,T.,Hakyemez,A.,Çulha,G.,Demirkaya,S.,Türkm en-Bozkurt,B.,The control of sea-level changes on sedimentation in the Mut Basin: Late Serravallian-Early Tortonian incised valley-fill. Bull. Min. Res. Exp.159, 2019.
24. Erünel-Erentöz, L., Mollusques du Neogene desbassing de Karaman, Adana et Hatay (Turquie). MTA Bulletin, Serie, C, No: 4, 232 p. 36 pl., 1958.
25. Özer, B., Duval, B., Courrier, P., Letouzey, J., Antalya-Mut-Adana Neojen Havzaları Jeolojisi. Türkiye II. Petrol Kongresi, Ankara, 57–84, 1974.
26. Bizon, G., Bizon, J.J., Feinberg, H. ve Öztümer, E., Antalya-Mut-Adana Neojen Havzaları Tersiyer biyostratigrafisi ve mikropaleontoloji yenilikleri. Türkiye ikinci Petrol Kongresi Tebliğleri, 217-228, 1974.
27. Gökten, E., Silifke yöresinin temel kaya birimleri ve Miyosen stratigrafisi. Türkiye Jeol. Kur. Bült., 19, 2, 103-117, 1976.
28. Tanar, Ü., Mut Havzası Tersiyer istifinin stratigrafisi ve mikropaleontolojisi, MTA Dergisi, sayı:110, s.175-180, 1989.
29. Tanar Ü., ve Gökçen, N., Mut-Ermenek Tersiyer istifinin stratigrafisi ve mikropaleontolojisi; MTA Derg., 110; 175-181, 1990.
30. Şafak, Ü., ve Gökçen, N., Planktik Foraminifer Zonlamasına Doğu Akdeniz Provansından Bir Örnek: Mut Havzası Tersiyer İstifi, Türkiye Jeoloji Bülteni, C.34 27-3.5, 1991.
31. Özdoğan, M., Şahbaz, A., Transgresif set ada-lagüner sistemi içinde yıkılmış bir yelpaze deltanın gelişimi ve fasiyes özellikleri (Mut Miyosen havzası, Güney Türkiye). H.Ü. Yerbilimleri Uyg. ve Araş. Mrkz. Bülteni, 21, 143-160, 1999.
32. Özkan Köksoy, T., Catapsydrax, Globorotalia, Globigerinoita'nın (planktik foraminifer) Mut havzası denizel Miyosen istifindeki biyostratigrafisi ve sistematik paleontolojisi, Yerbilimleri, 29, 11-27, 2004.
33. Gürler, G., Mut Baseni (Güney Türkiye) Miyosen Resiflerin Mercan Sistematiği, Stratigrafisi Biyofasiyesleri ve Paleoeolojisi. Çukurova Üniversitesi Doktora Tezi, 2017.
34. Gedik, A., Birgili, Ş., Yılmaz, H. ve Yoldaş, R., Mut-Ermenek-Silifke yöresinin jeolojisi ve petrol olanakları. Türkiye Jeol. Kur. Bülteni, C.22, S.1 s.7-26, 1979.
35. Korkmaz, S. ve Gedik, A., Mut - Ermenek - Silifke (Konya - Mersin) havzasında ana kaya fasiyesi ve petrol oluşumunun organik jeokimyasal yöntemlerle incelenmesi. Türkiye Jeoloji Bülteni, C. 33, 29-38,1990.
36. Şafak, Ü., Ünlügenç, U.C. ve Şenol, M., İncirlik (Adana güneydoğusu) çevresinde yeralan Geç Miyosen resifinin stratigrafisi ve mikropaleontolojisi. T.J.K. Bülteni, 11, 138-153, 1996.
37. Şafak, Ü. and Nurlu, N., A strontium isotopic, petrographic, and Ostracoda biostratigraphic study of Middle-Late Miocene sequences: implications of record in the Silifke-Erdemli/Mersin, southern Turkey. Arabian Journal of Geosciences 11:168, 2018.
38. Şafak, Ü., Antakya Havzası ostrakod biyostratigrafisi. Türkiye Jeoloji Bülteni, c.36, s.2, 115-137, 1993.
39. Boulton, S., Robertson, H.F. A., Ellam, R.M., Şafak, Ü. and

- Ünlügenç, U.C., Strontium Isotopic and Micropalaeontological Dating Used to Help Redefine the Stratigraphy of the Neotectonic Hatay Graben, Southern Turkey. *Turkish Journal of Earth Sciences* (Turkish J. Earth Sci.), Vol. 16, pp.141-179, 2007.
40. Morkhoven, F.P.C.M., Post-Palaeozoic Ostracoda. V.II, 478 p., Newyork, 1963.
41. Doruk, N., A stereo-atlas of ostracod shells. Puplished by the department of Geology in the University of Leicester, volume 1, part 1, England, 1973.
42. Bassiouni, M.A., Brackische und marine Ostrocoden (Cytherideinae, Hemicytherinae, Trachyleberidinae) aus dem Oligozaen und Neogen der Turkei. *Geol. Jb. Reihe B, Heft 31*, Hannover, 1-200, 1979.
43. Freels, D., Limnische Ostrakoden aus jungtertiar und Quartar der Turkey. *Geologische Jahrbuch, Reihe B, Heft 39*, 172 p., 1980.
44. Folk, R.L., Practical Petrographie classification of limestones. *A.A.P.G. Bull.*, 43, 1-38, 1959.
45. Folk R.L., Spectral subdivision of limestone types, *Amer. Assoc. Petrol. Geol. Mem.* 1, p. 62-84, 1962.
46. Dunham, R.J., Classification of carbonate rocks according to depositional texture. In: Ham, W.E. (Ed.), *Classification of Carbonate Rocks*, 1,62-84, 108-121, 1962
47. Köksal, S., Toksoy-Köksal, F., Göncüoğlu, M.C., Petrogenesis and geodynamics of plagiogranites from Central Turkey (Ekecikdağ/Aksaray): new geochemical and isotopic data for generation in an arc basin system within the northern branch of Neotethys. *Int. J. Earth Sci.*, 106, 1181-1203, 2017.
48. Köksal, S., Göncüoğlu, M.C., Sr and Nd Isotopic Characteristics of Some S-, I- and A-type Granitoids from Central Anatolia. *Turkish J. Earth Sci.*, 17, 111-127, 2008.
49. Sezer, S., The Miocene stratigraphy of Mut region, southern Turkey (Doktora tezi). Birkbeck college London University, 1970.
50. Demirel, İ. H., Köksoy, M., Ermenek Yöresinin Litostratigrafisi ve Jeoloji Evrimi. *Türkiye 9. Petrol Kongresi*, 17-21 Şubat 1992, s:198-206, 1992.
51. Schmitd, G.C., Adana petrol bölgesinin stratigrafik homenklatürü. *Petrol Dairesi Negriyatı No. 6*, s. 49-65, 1961.
52. Peterman, Z.E., Hetge, C.E., Tourtelot, H.A., Isotopic composition of strontium in sea water through out Phanero-zoic time. *Geochim. Cosmochim. Acta* 34, 105, 1970.
53. Veizer, J., Compston, W., 87Sr/86Sr composition of seawater during the Phanerozoic. *Geochim. Cosmochim. Acta* 38,1461-1484, 1974.
54. Palmer M. R. and Edmond, J. M., Strontium isotope budget of the modern ocean. *Earth Planet.Sci. Lett.*, 92, 11-26, 1989.
55. Taylor, A.S., Lasaga, A.C., The role of basalt weathering in the Sr isotope budget of the oceans. *Chem. Geol.* 161 (1-3), 199-21, 1999.
56. McArthur JM, Howarth RJ, Bailey T. R., Strontium isotope stratigraphy: LOWESS version 3: best fit to the marine Sr-isotope curve for 0-509 Ma and accompanying look-up table for deriving numerical age. *J Geol* 109:155-170, 2001.
57. Akay, E., Uysal, S., Poisson, A., Cravatte C.F.P.J. ve Müller, C., Antalya Neojen havzasının stratigrafisi. *Türkiye Jeoloji Kurumu Bülteni*, 28, 105-119, 1985.
58. Şafak, Ü. ve Subaşı, Y., Beşkonak-Altınkaya (Serik KD'su, Antalya) dolayı Miyosen İstifinin mikropaleontolojik ve ortamsal özellikleri. *İstanbul Üniversitesi Yerbilimleri Dergisi*, Cilt 11, Sayı 1, s. 67-86, 1998.
59. Koçyiğit, A., Sarıkaya-Üçbaşı (Karaman) Yöresinin Jeolojisi. *Türkiye Jeoloji Kurumu Bülteni*, c. 21, 77-86, 1978.
60. Şafak, Ü., Karaman yöresi Üst Miyosen-Pliyosen istifinin ostrakod faunası ve ortamsal yorumu. *M. T. A. Dergisi*, No. 119, 89-102, 1997.
61. Ünlügenç, U.C., Kelling, G., Williams, G.D., Demirkol, C., Aspects of Basin Evolution in the Neogene Adana Basin, SE Turkey, *International Earth Sciens Congress on Aegean Regions (IESCA)*, 1-6 October, Edit: Savaşçın, M.Y. and Eronat, A.H., p. 353-369, 1990.
62. Avcı, N., Nazik, A., Dinger, F. ve Darbaş, G. Adana Havzası Kuzgun Formasyonunun mikro fosiller ile ortamsal yorumu. *Hacettepe Yerbilimleri Dergisi*, 27 (1), 1-21, 2006.
63. Selçuk, H., Kızıldağ - Keldağ (Hatay) dolayının jeolojisi ve jeodinamik evrimi. *M.T.A. Enst. (Doktora Tezi)*, 75 -103, 1985.
64. Demir, N. E., Mut doğu yöresi Miyosen yaşta ki kayaçların stratigrafisi, *Yük. Müh. Tezi. H.Ü. Fen Bilimleri Enstitüsü* 93 s., Ankara, 1997.
65. Cosentino, D., Schildgen, T.F., Cipollari, P., Faranda, C., Gliozzi, E., Hudáčková, N., Lucifora, S., Strecker, M.R., Late Miocene surface uplift of the southern margin of the Central Anatolian plateau, Central Taurides, Turkey. *Bulletin of the Geological Society of America* 124, 133-145, 2012.
66. Ilgar, A., Nemec, W., Hakyemez, A., Karakuş, E., Messinian forced regressions in the Adana Basin: a near-coincidence of tectonic and eustatic forcing. *Turkish Journal of Earth Sciences Special Publication* 22, 864-889, 2013a.
67. Ilgar, A., Nemec, W., Hakyemez, A., Esirtgen, T., Messina, C., Türkmen, B., Çiner, A., The varied development and regional implications of late Serravalian erosional unconformity in the peri-Mediterranean basins of southern Turkey. *RCMNS, 14th Congress of Regional Committee on Mediterranean Neogene Stratigraphy*, İstanbul, Turkey, p. 21, 2013b.
68. Bremer, H., Paleontoloji. *Ege Üniversitesi Fen Fakültesi Kitapları Serisi*, No 46, 1978.
69. Sayar, C., Paleontoloji Omurgasız Fosiller. *İstanbul Teknik Üniversitesi Kütüphanesi Sayı: 1435*, 1991.
70. Morkhoven, F.P.C.M., Post-Palaeozoic Ostracoda. V.II, 478 p., Newyork, 1963.
71. Blumenthal, M.M., Niğde ve Adana vilayetleri dahilinde Torosların jeolojisine umumi bakış. *Maden Tetkik Arama Enat.*, Ankara, No 8, 48 s., 1941.
72. Blumenthal, M., Schichtfolge und Bauder Taurusketten im Hinterland Von Bozkır: *Rev. Fak. Sc. Üniv., İstanbul, Serie B,t. IX, fasc., 2*, 1944.
73. Blumenthal, M., Recherces géologiques dansle Taurus occidental dans l'arriere-pays d'Alanya. *MTA Enst. Yay. Seri D.*, No: 5, 134 s., 1951.
74. Blumenthal, M., Géologie des Hohen Bolkardağ, seiner nördlichen Randgebiete und westlichen Ausläufer. *Veröff des Inst, M. T. A., Serie D*, No. 7, 1955.
75. Blumenthal, M., Karaman-Konya havzası güneybatısında Toros kenar silsileleri ve şişir-radyolarit formasyonunun stratigrafisi meselesi. *Maden Tetkik Arama Dergisi* No 48, s. 1-36, 1956.
76. Blumenthal, M., Gülek Boğazı-Tarsus ile SilifkeMut arasındaki sahanın (Güney Anadolu Torosları / Kilikya Zonu) tabaka serileri ve yapısı. *MTA Derleme Rapor No : 2590*, Yayınlanmamış, 1961.
77. Akarsu.İ., Mut Bölgesi Jeolojisi. *Maden Tetkik Arama Dergisi*, Cilt 54, s.35-35, 1960, Ankara.
78. Niehoff, W., Mut 126/1 numaralı harita paftasının revizyon neticeleri hakkında rapor. *MTA Derleme rapor no: 3390* (yayınlanmamış), 1960.
79. Özgül, N., Orta Torosların Kuzey Kesiminin Yapısal Gelişiminde Blok Hareketlerinin Önemi. *Türkiye Jeoloji Bülteni*, 14 (1), 85-101, 1971.
80. Özgül, N., Torosların bazı temel jeoloji özellikleri; *Türkiye Jeol. Kur. Bült.*, 19/1, 65-78, 1976.
81. Koçyiğit, A., Karaman-Ermenek (Konya) Bölgesinde ofiyolitli melanaj ve diğer oluşuklar. *TJK Bülteni*, 19: 103-116,1976.

82. Koçyigit, A., Karaman-Ermenek arasındaki bölgenin tektoniği. Türkiye Jeoloji Kur. Bült., 20-1, 1-8,1977.
83. Şaroğlu, F., Boray, A., Özer, S., ve Kuşçu, İ., Orta Anadolu'nun Neotektoniği Üzerine Bazı Görüşler. Türkiye jeoloji Kurultayı Bildiri Özetleri,1982.
84. Şaroğlu, F., Boray, A., Özer, S., Kuşçu, İ., Orta Toroslar – Orta Anadolu'nun Güneyinin Neotektoniği İle İlgiliGörüşler. Jeomorfoloji Dergisi, S:11, s:35-44, 1983.
85. Demirtaşlı, E., Gedik, İ., İmik, M. Ermenek batısında Göktepe-Dumluğöze ve Tepebaşı arasında kalan bölgenin jeolojisi. Maden Tetkik ve Arama Genel Müdürlüğü Rapor No: 5783, Ankara (yayımlanmamış), 1986.
86. Pampal, S., Ayrancı Havzasında metamorfik Bolkar grubu ve Tersiyer oluşukları. Gazi Üni-versitesi Mühendislik Mimarlık Fakültesi Dergisi, 2 (2), 99-115, 1987.
87. Atabey, E., Atabey, N., Hakyemez, A., İslamoğlu, Y., Sözeri, Ş., Özçelik, N.N., Saraç, G., Ünay, E., Babayigit, S., Mut-Karaman arası Miyosen havzasının litostratigrafisi ve sedimantolojisi (Orta Toroslar). Maden Tetkik Arama Enstitüsü Dergisi, Sayı 122, s. 53-72, 2000.
88. Gül, M. And Eren, M., The Sedimentary Characteristics of Dağpazarı Patch Reef (Middle Miocene, Mut- İçel/ Turkey). Carbonates and Evaporites, v. 18, No. 1, 2003, p. 51- 62,2003.
89. Mandic O., Harzhauser M., Schlaf J., Piller W. E. Schuster F., Wieland-Schuster U., Nebelsick J.H., Kroh A., Rögl F., Bassant P., Palaeoenvironmentalreconstruction of an epicontinental flooding-Burdigalian (early Miocene) of the Mut Basin (southern Turkey). Courier Forschungsinstitut Senckenberg 248, 57- 92, 2004.
90. Bassant, P., van Buchem, F.S.P., Görür, N. The stratigraphic architecture and evolution of the Burdigalian carbonate-siliciclastic sedimentary systems of the Mut Basin, Turkey. Sedimentary Geology 173, 187–232, 2005.
91. Şafak, Ü., Kelling, G., Gökçen, N. and Gürbüz, K., The mid-Cenozoic succession and evolution of the Mut basin, southern Turkey, and its regional significance. Sedimentary Geology, 173(1):121-150, 2005.
92. Cıpollari, P., Halasova, E., Gürbüz, K., Cosentino, D., Middle-Upper Miocene paleogeography of southern Turkey: insights from stratigraphy and calcareous nannofossil biochronology of the Olukpınar and Başyayla sections (Mut-Ermenek Basin). Turkish Journal of Earth Sciences 22, 820–838,2013.
93. Ilgar,A.,Esirtgen,T.,Hakyemez,A.,Çulha,G.,Demirkaya,S.,Türkm en-Bozkurt,B.,The control of sea-level changes on sedimentation in the Mut Basin: Late Serravallian-Early Tortonian incised valley-fill. Bull. Min. Res. Exp.159, 2019.
94. Erunal-Erentöz, L., Mollusques du Neogene desbassing de Karaman, Adana et Hatay (Turquie). MTA Bulletin, Serie, C, No: 4, 232 p. 36 pl., 1958.
95. Özer, B., Duval, B., Courrier, P., Letouzey, J., Antalya-Mut-Adana Neojen Havzaları Jeolojisi. Türkiye II. Petrol Kongresi, Ankara, 57–84, 1974.
96. Bizon, G., Bizon, J.J., Feinberg, H. ve Öztümer, E., Antalya-Mut-Adana Neojen Havzaları Tersiyer biyostratigrafisi ve mikropaleontoloji yenilikleri. Türkiye ikinci Petrol Kongresi Tebliğleri, 217-228, 1974.
97. Gökten, E., Silifke yöresinin temel kaya birimleri ve Miyosen stratigrafisi. Türkiye Jeol. Kur. Bült., 19, 2, 103-117, 1976.
98. Tanar, Ü., Mut Havzası Tersiyer istifinin stratigrafisi ve mikropaleontolojisi, MTA Dergisi, sayı:110, s.175-180, 1989.
99. Tanar Ü., ve Gökçen, N., Mut-Ermenek Tersiyer istifinin stratigrafisi ve mikropaleontolojisi; MTA Derg., 110; 175-181, 1990.
100. Şafak, Ü., ve Gökçen, N., Planktik Foraminifer Zonlamasına Doğ u Akdeniz Provensinden Bir Örnek: Mut Havzası Tersiyer İstifi, Türkiye Jeoloji Bülteni, C.34 27-3.5, 1991.
101. Özdoğan, M., Şahbaz, A., Transgresif set ada-lagüner sistemi içinde yıkanmış bir yelpaze deltanın gelişimi ve fasiyes özellikleri (Mut Miyosen havzası, Güney Türkiye). H.Ü. Yerbilimleri Uyg. ve Araş. Mrkz. Bülteni, 21, 143-160, 1999.
102. Özkan Köksoy, T., Catapsydrax, Globorotalia, Globigerinoida'nın (planktik foraminifer) Mut havzası denizel Miyosen istifindeki biyostratigrafisi ve sistematik paleontolojisi, Yerbilimleri, 29, 11-27, 2004.
103. Gürler, G., Mut Baseni (Güney Türkiye) Miyosen Resiflerin Mergan Sistematiği, Stratigrafisi Biyofasiyesleri ve Paleoeolojisi. Çukurova Üniversitesi Doktora Tezi, 2017.
104. Gedik, A., Birgili, Ş., Yılmaz, H. ve Yoldaş, R., Mut-Ermenek-Silifke yöresinin jeolojisi ve petrol olanakları. Türkiye Jeol. Kur. Bülteni, C.22, S.1 s.7-26, 1979.
105. Korkmaz, S. ve Gedik, A., Mut - Ermenek - Silifke (Konya - Mersin) havzasında ana kaya fasiyesi ve petrol oluşumunun organik jeokimyasal yöntemlerle incelenmesi. Türkiye Jeoloji Bülteni, C. 33, 29-38,1990.
106. Şafak, Ü., Ünlügenç, U.C. ve Şenol, M., İncirlik (Adana güneydoğusu) çevresinde yeralan Geç Miyosen resifinin stratigrafisi ve mikropaleontolojisi. T.J.K. Bülteni, 11, 138-153, 1996.
107. Şafak, Ü. and Nurlu, N., A strontium isotopic, petrographic, and Ostracoda biostratigraphic study of Middle-Late Miocene sequences: implications of record in the Silifke–Erdemli/Mersin, southern Turkey. Arabian Journal of Geosciences 11:168, 2018.
108. Şafak, Ü., Antakya Havzası ostrakod biyostratigrafisi. Türkiye Jeoloji Bülteni, c.36, s.2, 115-137, 1993.
109. Boulton, S., Robertson, H.F. A., Ellam, R.M., Şafak, Ü. and Ünlügenç, U.C., Strontium Isotopic and Micropalaeontological Dating Used to Help Redefine the Stratigraphy of the Neotectonic Hatay Graben, Southern Turkey. Turkish Journal of Earth Sciences (Turkish J. Earth Sci.), Vol. 16, pp.141-179, 2007.
110. Morkhoven, F.P.C.M., Post-Palaeozoic Ostracoda. V.II, 478 p., Newyork, 1963.
111. Doruk, N., A stereo-atlas of ostracod shells. Puplished by the department of Geology in the University of Leicester, volume 1, part 1, England, 1973.
112. Bassiouni, M.A., Brackische und marine Ostrocoden (Cytherideinae, Hemicytherinae, Trachyleberidinae) aus dem Oligozoen und Neogen der Turkei. Geol. Jb. Reihe B, Heft 31, Hannover, 1-200, 1979.
113. Freels, D., Limnische Ostrakoden aus jungtertiar und Quartarder Turkey. Geologische Jahrbuch, Reihe B, Heft 39, 172 p., 1980.
114. Folk, R.L., Pracial Petrographie classification of limestones. A.A.P.G. Bull., 43, 1-38, 1959.
115. Folk R.L., Spectral subdivision of limestone types, Amer. Assoc. Petrol. Geol. Mem. 1, p. 62–84, 1962.
116. Dunham, R.J., Classification of carbonate rocks according to depositional texture. In: Ham, W.E. (Ed.), Classification of Carbonate Rocks, 1,62–84, 108-121, 1962
117. Köksal, S., Toksoy-Köksal, F., Göncüoğlu, M.C., Petrogenesis and geodynamics of plagiogranites from Central Turkey (Ekcekidağ/ Aksaray): new geochemical and isotopic data for generation in an arc basin system within the northern branch of Neotethys. Int. J. Earth Sci., 106, 1181–1203, 2017.
118. Köksal, S., Göncüoğlu, M.C., Sr and Nd Isotopic Characteristics of Some S-, I- and A-type Granitoids from Central Anatolia. Turkish J. Earth Sci., 17, 111–127, 2008.
119. Sezer, S., The Miocene stratigraphy of Mut region, southern Turkey (Doktora tezi). Birkbeck college London University, 1970.

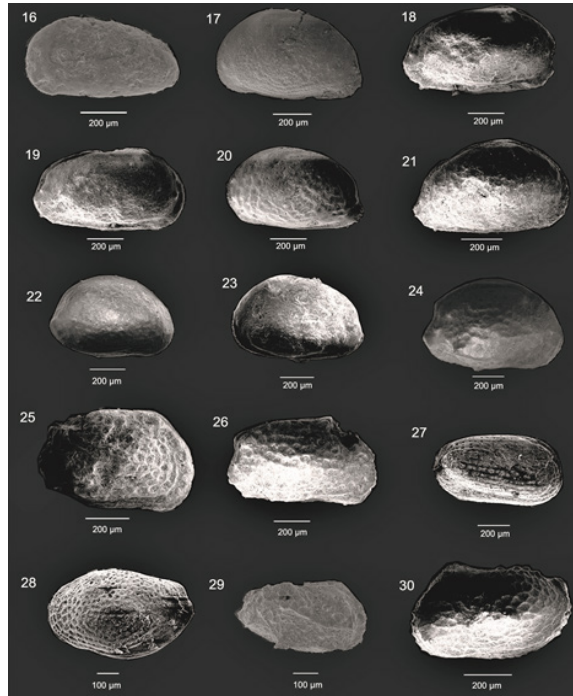
120. Demirel, İ. H., Köksoy, M., Ermenek Yöresinin Litostratigrafisi ve Jeoloji Evrimi. Türkiye 9. Petrol Kongresi, 17-21 Şubat 1992, s:198-206, 1992.
121. Schmitd, G.C., Adana petrol bölgesinin stratigrafik homenklatürü. Petrol Dairesi Negriyatı No. 6, s. 49-65, 1961.
122. Peterman, Z.E., Hetge, C.E., Tourtelot, H.A., Isotopic composition of strontium in sea water through out Phaner-ozoic time. Geochim. Cosmochim. Acta 34, 105, 1970.
123. Veizer, J., Compston, W., 87Sr/86Sr composition of seawater during the Phanerozoic. Geochim. Cosmochim. Acta 38,1461-1484, 1974.
124. Palmer M. R. and Edmond, J. M., Strontium isotope budget of the modern ocean. Earth Planet.Sci. Lett., 92, 11-26, 1989.
125. Taylor, A.S., Lasaga, A.C., The role of basalt weathering in the Sr isotope budget of the oceans. Chem. Geol. 161 (1-3), 199-21, 1999.
126. McArthur JM, Howarth RJ, Bailey T. R., Strontium isotope stratigraphy: LOWESS version 3: best fit to the marine Sr-isotope curve for 0-509 Ma and accompanying look-up table for deriving numerical age. J Geol 109:155-170, 2001.
127. Akay, E., Uysal, S., Poisson, A., Cravatte C.F.P.J. ve Müller, C., Antalya Neojen havzasının stratigrafisi. Türkiye Jeoloji Kurumu Bülteni, 28, 105-119, 1985.
128. Şafak, Ü. ve Subaşı, Y., Beşkonak-Altınkaya (Serik KD'su, Antalya) dolayı Miyosen İstifinin mikropaleontolojik ve ortamsal özellikleri. İstanbul Üniversitesi Yerbilimleri Dergisi, Cilt 11, Sayı 1, s. 67-86, 1998.
129. Koçyiğit, A., Sarıkaya-Üçbaşı (Karaman) Yöresinin Jeolojisi. Türkiye Jeoloji Kurumu Bülteni, c. 21, 77-86, 1978.
130. Şafak, Ü., Karaman yöresi Üst Miyosen-Pliyosen istifinin ostrakod faunası ve ortamsal yorumu. M. T. A. Dergisi, No. 119, 89-102, 1997.
131. Ünlügenç, U.C., Kelling, G., Williams, G.D., Demirkol, C., Aspects of Basin Evolution in the Neogene Adana Basin, SE Turkey, International Earth Sciens Congress on Aegean Regions (IESCA), 1-6 October, Edit: Savaşçın, M.Y. and Eronat,A.H., p. 353-369, 1990.
132. Avcı, N., Nazik, A., Dinçer, F. ve Darbaş, G. Adana Havzası Kuzgun Formasyonunun mikro fosiller ile ortamsal yorumu. Hacettepe Yerbilimleri Dergisi, 27 (1), 1-21, 2006.
133. Selçuk, H., Kızıldağ - Keldağ (Hatay) dolayının jeolojisi ve jeodinamik evrimi. M.T.A. Enst. (Doktora Tezi), 75 -103, 1985.
134. Demir, N. E., Mut doğu yöresi Miyosen yaştaki kayaçların stratigrafisi, Yük. Müh. Tezi. H.Ü. Fen Bilimleri Enstitüsü 93 s., Ankara, 1997.
135. Cosentino, D., Schildgen, T.F., Cipollari, P., Faranda, C., Gliozzi, E., Hudáčková, N., Lucifora, S., Strecker, M.R., Late Miocene surface uplift of the southern margin of the Central Anatolian plateau, Central Taurides, Turkey. Bulletin of the Geological Society of America 124, 133-145, 2012.
136. Ilgar, A., Nemeç, W., Hakyemez, A., Karakuş, E., Messinian forced regressions in the Adana Basin: a near-coincidence of tectonic and eustatic forcing. Turkish Journal of Earth Sciences Special Publication 22, 864-889, 2013a.
137. Ilgar, A., Nemeç, W., Hakyemez, A., Esirtgen, T., Messina, C., Türkmen, B., Çiner, A., The varied development and regional implications of late Serravalian erosional unconformity in the peri-Mediterranean basins of southern Turkey. RCMNS, 14th Congress of Regional Committee on Mediterranean Neogene Stratigraphy, İstanbul, Turkey, p. 21, 2013b.
138. Bremer, H., Paleontoloji. Ege Üniversitesi Fen Fakültesi Kitapları Serisi, No 46, 1978.
139. Sayar, C., Paleontoloji Omurgasız Fosiller. İstanbul Teknik Üniversitesi Kütüphanesi Sayı: 1435, 1991.

Plate I



- Figure 1. *Bythocypris lucida* (Sequenza)
1. Left cover, side view, Dağpazarı 1 Measured Stratigraphy Section, Sample 21
- Figure 2. *Cytherella glypta* Doruk
2. Shell, left exterior view, Dağpazarı 2 Measured Stratigraphy Section, Sample 3
- Figure 3. *Cytheridea acuminata neapolitana* Kollmann
3. Left cover, side view, Dağpazarı 1 Measured Stratigraphy Section, Sample 7
- Figure 4. *Cytheridea acuminata acuminata* Bosquet
4. Right cover, side view, Dağpazarı 1 Measured Stratigraphy Section, Sample 26
- Figure 5-6. *Cyamocytheridea reversa* (Egger)
5. Carapace, right external view, Dağpazarı 1 Measured Stratigraphy Section, Sample 22
6. Shell, right external view, Dağpazarı 1 Measured Stratigraphy Section, Sample 13
- Figure 7-8. *Cyamocytheridea meniscus* Doruk
7. Shell, left exterior view, Dağpazarı 1 Measured Stratigraphy Section, Sample 26
8. Carapace, right side view, Dağpazarı 1 Measured Stratigraphy Section, Sample 17
- Figure 9-10. *Pontocythere elongata* (Brady)
9. Shell, right external view, Dağpazarı 1 Measured Stratigraphy Section, Sample 21
10. Carapace, right side view, Dağpazarı 1 Measured Stratigraphy Section, Sample No. 21
- Figure 11-12. *Krithe citae* Oertli
11. Shell, right external view, Dağpazarı 1 Measured Stratigraphy Section, Sample 23
12. Right cover, side view, Dağpazarı 1 Measured Stratigraphy Section, Sample 13
- Figure 13. *Krithe monostercensis* (Sequenza)
13. Shell, right external view, Dağpazarı 1 Measured Stratigraphy Section, Sample 26
- Figure 14. *Cistacythereis pokornyi* (Ruggieri)
14. Shell, left exterior view, Dağpazarı 1 Measured Stratigraphy Section, Sample 31
- Figure 15. *Ruggieria tetraptera tetraptera* (Sequenza)
15. Shell, left exterior view, Dağpazarı 2 Measured Stratigraphy Section, Sample 10

Plate II



- Figure 16. *Thalmannia clauda* (Doruk)
16. Shell, left exterior view, Dağpazarı 1 Measured Stratigraphy Section, Sample 32
- Figure 17. *Aurila convexa* (Baird)
17. Shell, left exterior view, Dağpazarı 2 Measured Stratigraphy Section, Sample 10
- Figure 18-19. *Aurila freudenthali* Sissingh
18. Shell, right external view, Dağpazarı 1 Measured Stratigraphy Section, Sample 26
19. Shell, right external view, Dağpazarı 1 Measured Stratigraphy Section, Sample 26
- Figure 20-21. *Aurila ulicznyi* Sissingh
20. Shell, left exterior view, Dağpazarı 1 Measured Stratigraphy Section, Sample 28
21. Shell, right external view, Dağpazarı 1 Measured Stratigraphy Section, Sample 17
- Figure 22. *Aurila speyeri* (Brady)
22. Shell, right external view, Dağpazarı 2 Measured Stratigraphy Section, Sample 9
- Figure 23. *Aurila soummamensis* Coutelle and Yassini
23. Shell, left exterior view, Dağpazarı 1 Measured Stratigraphy Section, Sample 28
- Figure 24. *Pokorniyella deformis minor* Moyes
24. Shell, right external view, Dağpazarı 2 Measured Stratigraphy Section, Sample 11
- Figure 25. *Tenedocythere prava* (Baird)
25. Shell, right external view, Dağpazarı 1 Measured Stratigraphy Section, Sample 22
- Figure 26. *Tenedocythere salebrosa* Uliczny,
26. Shell, right external view, Dağpazarı 1 Measured Stratigraphy Section, Sample 28
- Figure 27. *Cytheretta semiornata* (Egger)
27. Shell, right external view, Dağpazarı 1 Measured Stratigraphy Section, Sample 34
- Figure 28. *Loxoconcha rhomboidea* (Fischer)
28. Shell, left exterior view, Dağpazarı 1 Measured Stratigraphy Section, Sample 28
- Figure 29. *Loxoconcha cristatissima* Ruggieri
29. Shell, right external view, Dağpazarı 1 Measured Stratigraphy Section, Sample 31
- Figure 30. *Loxocorniculum quadricornis* (Ruggieri)
30. Shell, left exterior view, Dağpazarı 1 Measured Stratigraphy Section, Sample 31