



## INVESTIGATION OF GEOLOGICAL STRUCTURES BETWEEN ACIPINAR-HANOBASI-ALTINKAYA (AKSARAY-TÜRKİYE) ABOUT SATELLITE-BASED TECTONIC LINEAMENTS

Ramazan DEMİRCİOĞLU<sup>1\*</sup>


<sup>1</sup>Aksaray University, Faculty of Health Sciences, Department of Emergency Aid and Disaster Management, 42250, Aksaray, Türkiye

**Abstract:** The region between Aksaray, Central Anatolia, and Altinkaya (Türkiye) is included in the study area. The area's basement comprises ophiolites, igneous rocks from the Late Cretaceous period, and metamorphic rocks from the Palaeozoic to Mesozoic ages. Late Cretaceous-Quaternary sedimentary units were formed in the area Tuzgölü Basin. The Late Cretaceous-Mio-Pliocene sedimentary rocks in the study area have undergone polyphase deformation under compressive and extensional tectonic regimes. As a result of these deformations the folded, faulted and fractured structures have been developed in the rocks of the area. These structures have formed lineations. In this study, the relationship between the tectonic lineaments identified in the field and those obtained by computer processing of Landsat 8 images was evaluated. The lineament densities obtained by satellite were N40-500E, N50-600E, N30-400W, N40-500W and N80-900W. Similarly, the lineament densities obtained from field studies were determined as N40-500E, N50-600E, N40-500W, N30-400W and N80-900W. The lineaments belonging to the Tuzgölü fault and the structural geological structures determined in the field are in significant agreement.

**Keywords:** Türkiye, Tuzgolü basin, Aksaray, Acipınar-Altinkaya, Lineament

\*Corresponding author: Aksaray University, Faculty of Health Sciences, Department of Emergency Aid and Disaster Management, 42250, Aksaray, Türkiye

E mail: ra.demircioglu@gmail.com (R. DEMİRCİOĞLU)

Ramazan DEMİRCİOĞLU  <https://orcid.org/0000-0003-0616-0331>

Received: April 22, 2024

Accepted: November 26, 2024

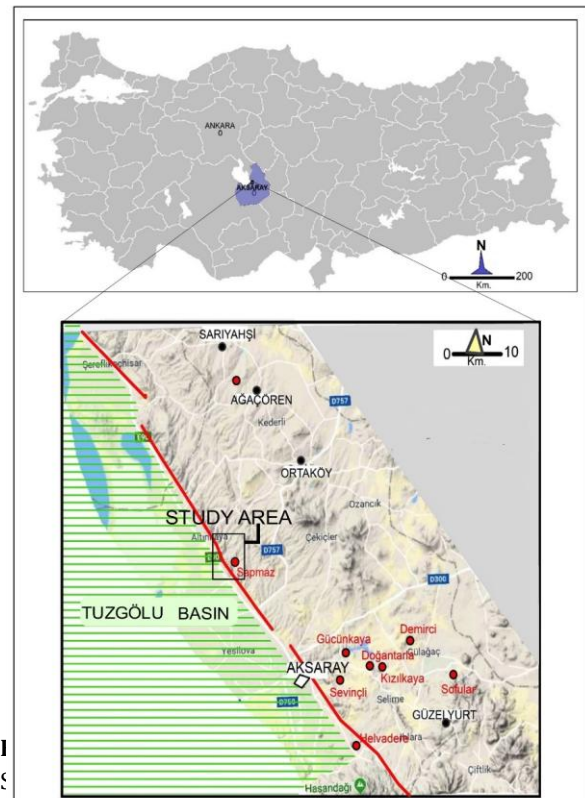
Published: March 15, 2025

**Cite as:** Demircioğlu. 2025. Investigation of geological structures between Acipınar-Hanobası-Altinkaya (Aksaray-Türkiye) about satellite-based tectonic lineaments. BSJ Eng Sci, 8(2): xx-xx.

### 1. Introduction

The study area is located in the Tuzgölü basin in Central Anatolia, northeast of the Tuzgölü fault zone (Figure 1). It covers the area between Acipınar and Altinkaya towns in Aksaray province. Important studies have been carried out in different fields of geology in and around the study area.

The study area, it's around have been thoroughly examined by various researchers over the years. Erol (1969), Arıkan (1975), Uygun (1981), Görür et al. (1984), Atabey et al. (1987), Dellaloğlu (1997), and Uçar (2008) also conducted sedimentological studies. Additionally, Çemen et al. (1999) analyzed the geodynamic evolution of the Tuzgölü basin, Dirik and Erol (2003) examined the morphotectonic features of the area and its surroundings, and Koçyiğit (2000) investigated the seismic characteristics of Central Anatolia.



(1991), conducted active fault mapping studies in some researchers, such as Şaroğlu et al. (1992) and Emre



(1991), conducted active fault mapping studies in Türkiye to assess the earthquake-generating potential of the Tuzgölü fault zone, which passes through the study area. Kürçer (2012), Kürçer and Gökten (2011), and Kürçer and Gökten (2014) also realised palaeoseismological studies on segments of the Tuzgölü fault zone.

Recently, remote sensing studies with satellite and aerial photographs have increased. One of these studies is the determination of tectonic lineaments obtained by remote sensing studies. Lineament studies are very important in geological studies. In particular, there are many studies on the relationship between mining areas and tectonic lineaments. Some of these studies are Shirazi et al. (2022), Cherai et al. (2022), Sassioui et al. (2023), Dutra et al. (2023), Nouri and Arian (2023). For geothermal areas, linearity studies are important. Some of the related studies are Arrofi et al. (2022), Mahwa et al. (2023), and Heriawan et al. (2019). There are also studies on the relationship between geological structures and tectonic linearity. Some of them are Benaafi et al. (2017), Akram et al. (2019), Redouane et al. (2022), Skakni et al. (2022), Ahmadi et al. (2023), and Baruah et al. (2023).

The purpose of this study is to compare satellite-based tectonic lineaments with the lineament structures in a specific area. This comparison has not been performed in any other study. This study looks at lineaments belonging to faults, folded structures, and shear fractures observed in the Late Cretaceous-Miocene aged units between Acıpinar and Altınkaya. These lineaments were compared with those obtained by processing satellite images. This study found that the lineaments collected from satellite-based methods and field studies are generally compatible.

## 2. Materials and Methods

To begin with, the study area underwent comprehensive field evaluations that took into account prior research. Through a combination of on-site and remote sensing methods that utilized satellite imagery, the tectonic lineaments of the region were determined. The Landsat-8 OLI satellite image was initially processed in the ENVI program within a computer environment. From there, the resultant image was transferred to the ArcGis program after taking into account the threshold values in the Geomatica program, revealing the lineaments. Linearities obtained from both field and satellite studies were used to create rose diagrams, which were generated using the Rockwork program. A visual representation of these processes can be found in Figure 2.

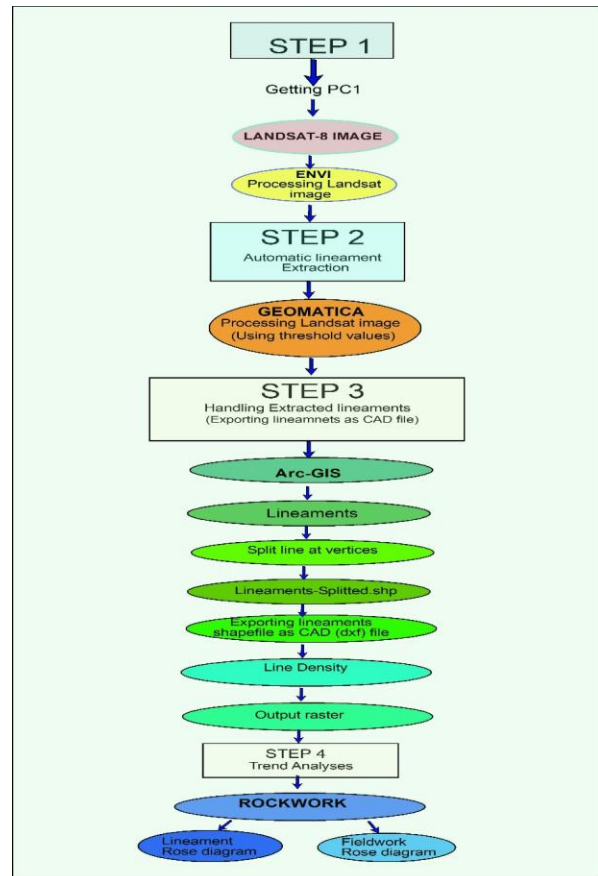


Figure 2. Flowchart of the lineament map generation.

Through the acquisition of data, an assessment was conducted on the tectonic lineaments in the area spanning from Acıpinar to Altınkaya. This was accomplished by analyzing both field and satellite-based lineaments. The lineaments extracted from the Landsat-8 satellite image were cross-referenced with those found in field research, which are related to various faults and fractures.

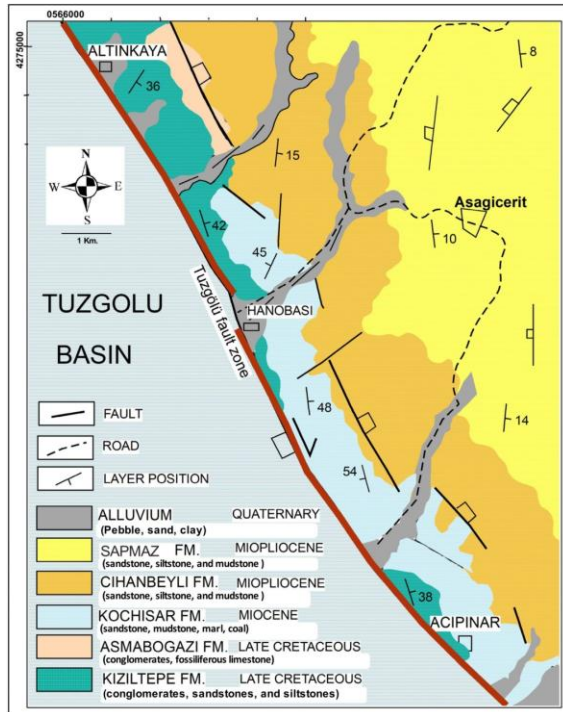
### 2.1. Geological Setting

#### 2.1.1. Stratigraphy

The study area and its surroundings cover the region between Acıpinar and Altınkaya in Aksaray province. Late Cretaceous-Mio-Pliocene aged rocks outcrop in this area (Figure 3).

Although not visible in the study area, the Kirsehir massif's Paleozoic-Mesozoic aged metamorphites, Late Cretaceous aged ophiolites, and plutonic rocks form the surrounding and study area's basement. The Kızıltepe Formation, consisting of late Cretaceous-aged sedimentary rocks, is the oldest unit in the study area, with burgundy-red-colored conglomerates, sandstones, and siltstones indicating a terrestrial environment (Figure 3). The Asmabogazi Formation overlays this unit unconformably, starting with conglomerates and continuing with sandstones containing *Orbitoides* fossils and limestones containing Rudist and *Hippurites* towards the top, indicating a terrestrial-marine environment (Uçar, 2008). These unit's sandstone, mudstone, and marl succession sometimes have thin coaly levels. Dellalolu

(1997) set the unit's age as Miocene based on the palaeontological studies on the coal levels. The Miocene aged Cihanbeyli formation covers this unit angularly, with sandstone, siltstone, and mudstone levels present towards the top, including tuffaceous levels. Dellaloğlu (1997) and Toprak and Rojay (1997) set the late Miocene-Pliocene age for this unit based on palaeontological and radiometric ageing studies on the units and tuffaceous levels, respectively. The Sapmaz formation, of the Miocene-Pliocene aged, is laterally vertically transitional with this unit (Uçar, 2008). Finally, all these units are unconformably overlaid by Quaternary aged alluvium (Figure 3).



**Figure 3.** Geological map of the research region and its environs.

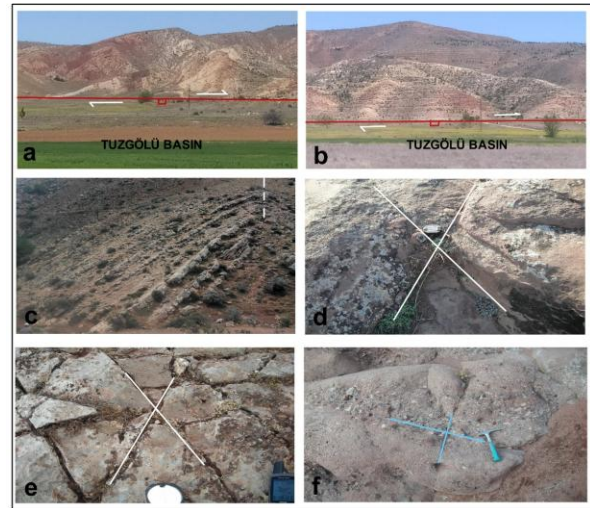
### 2.1.2. Structural geology

The Tuzgölü basin boasts numerous geological studies, with a particular focus on the Koçhisar-Aksaray segment of the Tuzgölü fault zone. Here, the fault segment's strikes tend to vary between N30 and 45°W. The study area features northwest-southeast horst and graben structures, including the Hanobasi horst and Asagicerit graben (Figure 3). The Late Cretaceous-Mio-Pliocene aged rocks in these areas have undergone significant deformation, attributable to the closure of the Inner Tauride Ocean and the ensuing compressive tectonic regime. The formation of folded structures, faults, and shear fractures were realised in this period. In more recent times, during the late Miocene and early Pliocene, the area has experienced the effects of the extensional tectonic regime, leading to the formation of the Tuzgölü fault zone and normal faults that possess a directional thrust fault character and a vertical thrust component (Kürçer and Gökten, 2014).

## 3. Results

### 3.1. Geological Structures Presenting Linearity

The Tuzgölü Fault Zone is the most significant linear tectonic structure in the study area. The direction of the Tuzgölü fault zone varies, and it includes the Koçhisar-Aksaray segment within the study area. Field studies show that structures like faults, fractures, and fold axes exhibit tectonic linearity, as shown in Figure 4. In Altinkaya village, the Koçhisar-Aksaray fault line is visible (Figure 4a). Similarly, the Koçhisar-Aksaray fault line is clearly visible around Acipinar village (Figure 4b). Furthermore the fold axes of the units which exhibit folding form lineations in the study area. The shear and tension fractures also formed due to the polyphase deformation in the study area (Figure 4d, e, f).



**Figure 4.** a-The Koçhisar-Aksaray fault line from Altinkaya village. b-The Koçhisar-Aksaray fault line from Acipinar village c- Fold and fold axis appearance in the Asmabogazi Formation. d- Shear fractures in sandstones of the Koçhisar Formation. e- Shear fractures in Asmabogazi limestones f- Tension fractures in conglomerate of the Sapmaz Formation.

In the study area, there are two types of lineations: morphological lineations caused by erosion and tectonic lineations. Additionally, there are important normal faults including the Koçhisar-Aksaray fault that forms the Hanobasi horst are present. The normal faults, which have developed in parallel or semi-parallel directions to this fault, also form lineations.

### 3.2. Lineament maps

One of the satellite images between Acipinar and Altinkaya is the Google Earth image where the Koçhisar-Aksaray fault is seen (Figure 5). In this image, the Koçhisar-Aksaray fault is visible. Landsat-8 OLI satellite imagery obtained from [earthexplorer.usgs.gov/](http://earthexplorer.usgs.gov/) web address was used to create the lineament maps (Figure 6). This image was processed in the Envi programme. Then, in Geomatica, the image was prepared for the ArcGIS program by using threshold values to obtain sufficient detail. A lineament map was obtained in the

ArcGis programme (Figure 7). By superimposing the density map and lineament map of the lineaments between Acıpinar and Altınkaya, a density-lineament map of the study area was created (Figure 8).

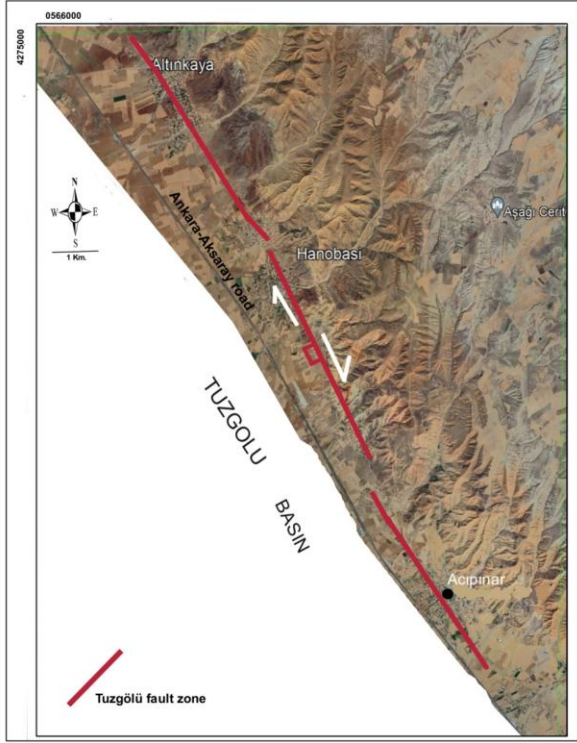


Figure 5. Google Earth image of Acıpinar-Altınkaya.

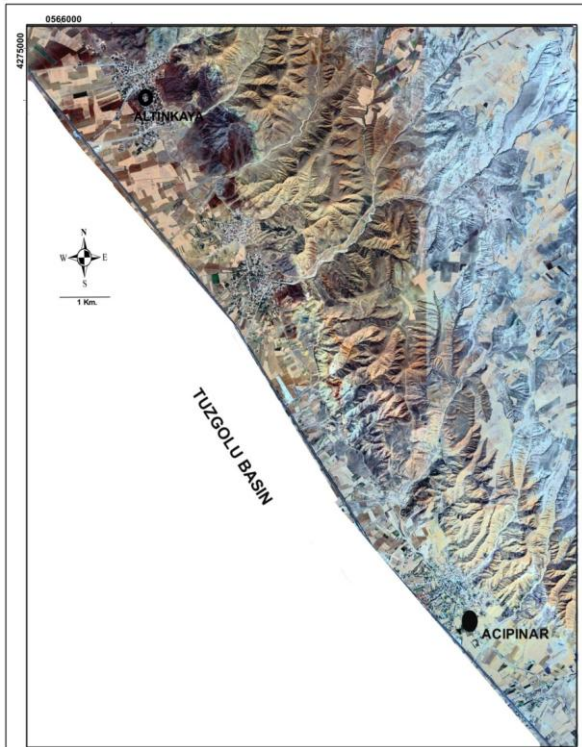


Figure 6. Landsat-8 OLI satellite image.

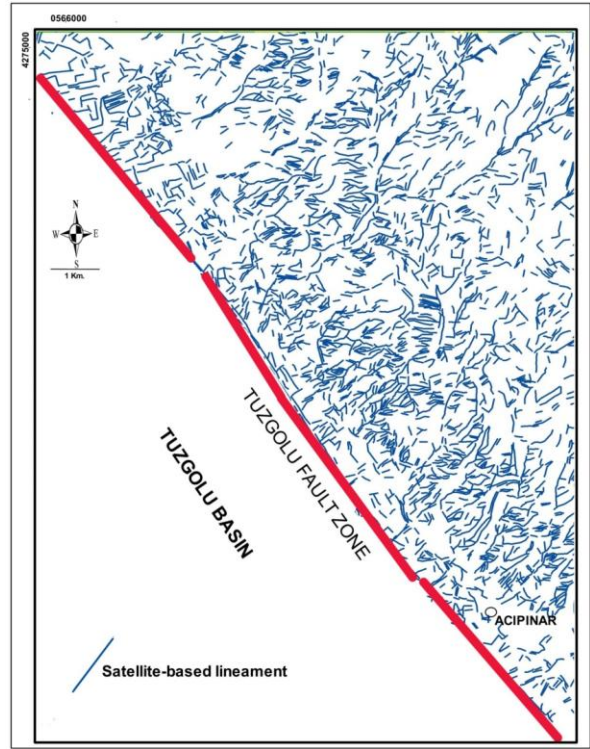


Figure 7. Tectonic lineament map between Acıpinar-Altınkaya.

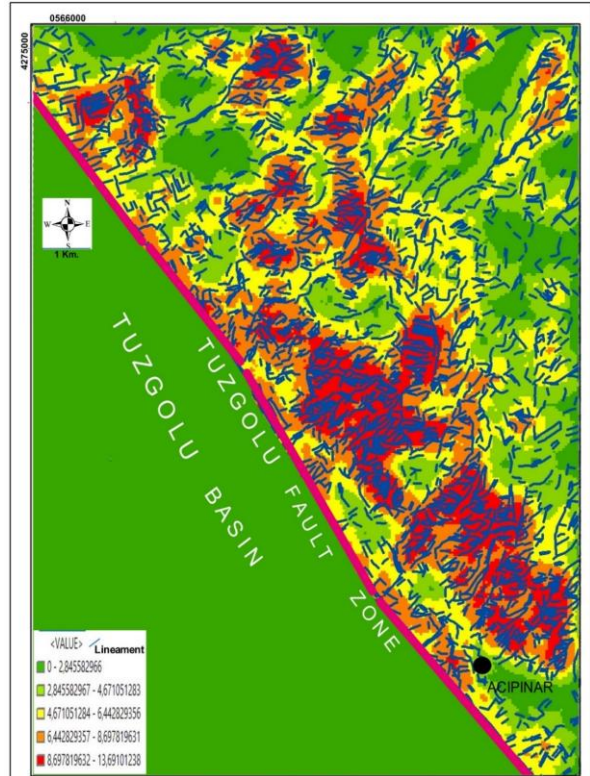


Figure 8. Lineament density and lineaments map.

### 3.3. Assessment of fieldwork and satellite lineaments

To ascertain the predominant distribution directions of the lineaments collected between Altınkaya and Acıpinar, rose diagrams were constructed. The length as a proportion of the total lineament length (%L) and the

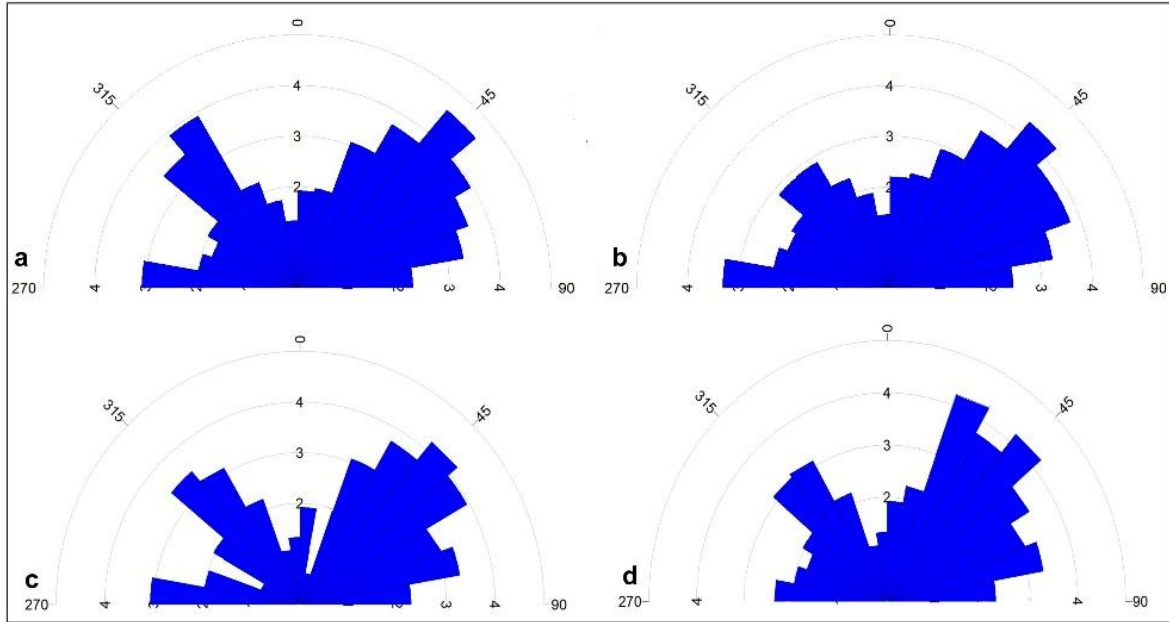
length as a percentage of the total lineament population (%N) were used to produce two different types of rose diagrams.

The diagrams showed that lineaments were present in all directions, but the dominant directions were N40°-50°E, N50°-60°E, N30°-40°W, N40°-50°W, and N80°-90°W.

Furthermore, a rose diagram of the faults was created in the Rockwork programme. It was based on 67 measurements taken from faults ranging from centimetres to metres in size, which were determined in

the Late Cretaceous-Mio-Pliocene aged rocks. The dominant fault directions were found to be concentrated between N40°-50°E, N50°-60°E, N30°-40°W, N40°-50°W, and N80°-90°W

Based on the measurements taken from the shear fractures in Late Cretaceous-Miocene-aged units, a rose diagram was created. The dominant fracture directions were N20°-30°E, N40°-50°E, N30°-40°W, N40°-50°W, and N80°-90°W, totaling 157 measurements.



**Figure 9.** a- %L rose diagram b- %N rose diagram. c- Rose diagram of the faults d- Rose diagram of shear fracture in sedimentary rocks.

#### 4. Conclusions

Lineaments in the region between Acıpinar and Altinkaya, derived from field and satellite-based surveys, were analyzed. Within the Late Cretaceous-Mio-Pliocene aged rocks in the study area, faults, fractures, and folds resulted from polyphase deformations, forming lineaments. These lineaments were assessed, particularly those located northeast of the Tuzgölü fault zone. Using the Rockwork program, rose diagrams were generated for both field and satellite-based lineaments, which revealed that the lineaments were distributed in all directions due to polyphase deformations, with the most intense directions being N40°-50°E, N50°-60°E, N30°-40°W, N40°-50°W, and N80°-90°W, according to %L and %N. A rose diagram was created based on the directional measurements of the faults determined in the field, which showed that the dominant fault directions were N40°-50°E, N50°-60°E, N40°-50°W, N30°-40°W, and N80°-90°W, similar to the fault directions of the Koçhisar-Aksaray segment. Similarly, a rose diagram was prepared for the measurements taken from the fractures in the area, revealing dominant fracture directions of N20°-30°E, N40°-50°E, N30°-40°W, N40°-50°W, and N80°-90°W, similar to the faults.

From the obtained rose diagrams, fractures have

developed in all orientations due to polyphase deformation. By evaluating the fracture and fault planes in the rose diagrams, it is possible to determine the dominant compression and extension directions.

The lineaments obtained from the field surveys and satellite-based studies were found to be highly compatible.

**Author Contributions**

The percentage of the author contributions is presented below. The author reviewed and approved the final version of the manuscript.

	R.D.
C	100
D	100
S	100
DCP	100
DAI	100
L	100
W	100
CR	100
SR	100
PM	100
FA	100

C=Concept, D= design, S= supervision, DCP= data collection and/or processing, DAI= data analysis and/or interpretation, L= literature search, W= writing, CR= critical review, SR= submission and revision, PM= project management, FA= funding acquisition.

**Conflict of Interest**

The author declared that there is no conflict of interest.

**Ethical Consideration**

Ethics committee approval was not required for this study because of there was no study on animals or humans.

**References**

Ahmadi H, Pekkan E, Seyitoğlu G. 2023. Automatic lineaments detection using radar and optical data with an emphasis on geologic and tectonic implications: a case study of Kabul Block, eastern Afghanistan. *Geocarto Inter*, 38(1): 2231400. <https://doi.org/10.1080/10106049.2023.2231400>

Akram MS, Mirza K, Zeeshan M, Ali I. 2019. Correlation of tectonics with geologic lineaments interpreted from remote sensing data for Kandiah Valley, Khyber-Pakhtunkhwa, Pakistan. *J Geol Soc India*, 93: 607-613. <https://doi.org/10.1007/s12594-019-1224-7>

Arikan Y. 1975. Tuz Gölü havzasının jeolojisi ve petrol imkanları. *M.T.A. Derg*, 85: 17-37.

Arrofi D, Abu-Mahfouz IS, Prayudi SD. 2022. Investigating high permeable zones in non-volcanic geothermal systems using lineament analysis and fault fracture density (FFD): northern Konawe Regency, Indonesia. *Geothermal Ener*, 10(1): 1-17. <https://doi.org/10.1186/s40517-022-00241-3>

Atabey E, Tarhan N, Akarsu B, Taşkıran A. 1987. Şereflikoşisar, Panlı (Ankara) Acıpınar (Niğde) yöresinin jeolojisi, maden tetkik ve arama genel müdürlüğü raporu. Derleme no; 8155, Ankara, Ankara, Türkiye, ss: 63.

Baruah M P, Goswami T K, Bezbaruah D. 2023. Understanding the tectonics of the Mikir massif, northeast India: insights from lineament analysis. *Arabian J Geosci*, 16(10): 545. <https://doi.org/10.1007/s12517-023-11658-w>

Benaafi M, Hariri M, Abdullatif O, Makkawi M., Al-Shaibani A. 2017. Analysis of lineaments within the Wajid Group, SW

Saudi Arabia, and their tectonic significance. *Arabian J Geosci*, 10: 1-17. <https://doi.org/10.1007/s12517-017-2860-0>

Cherai,M, Marzouki A, Talbi F. 2022. Mineralization-tectonic relationship in the jbeltirremi fluorite mine (Taourirt region-eastern morocco): contribution of remote sensing for geological exploration. *J Mines, Metals Fuels*, 70(5): 251-257. <https://doi.org/10.18311/jmmf/2022/28374>

Çemen İ, Göncüoğlu MC, Dirik K.1999. Structural evolution of the Tuzgölü basin in Central Anatolia. *Turkey, J Geol*, 107 (6): 693-706.

Dellaloğlu A. 1997. Ankara ili-Tuz Gölü arasındaki Neotetis'in kuzey kolunun evrimi (Haymana-Tuzgölü Basenlerinin stratigrafileri ve jeoteknik evrimleri. Doktora tezi, Çukurova Üniversitesi, Adana, Türkiye, ss: 154.

Dirik K, Erol O. 2003.Tuzgölü ve çevresinin tektonomorfolojik evrimi, Orta Anadolu-Türkiye. *TPJD*, 5: 27-46.

Dutra LF, Louro VHA, Monteiro LVS. 2023. The southern IOCG and hydrothermal nickel mineralization trend of the Carajás Mineral Province: Airborne geophysical and remote sensing evidence for structural controls and hydrothermal signature. *J Appl Geophys*, 213: 105016. <https://doi.org/10.1016/j.jappgeo.2023.105016>

Emre Ö. 1991. Hasandağı-Keçiboyduran dağı yöresivolkanizmasının jeomorfolojisi, Tuz Gölü fay zonunun neotektonik özellikleri. Doktora tezi, İstanbul Üniversitesi, Deniz Bilimleri ve Coğrafya Enstitüsü, İstanbul, Türkiye, ss: 198.

Erol O. 1969. Tuz Gölü havzasının jeolojisi ve jeomorfolojisi. MTA Derleme rapor no; 4220, Ankara, Türkiye, ss: 43.

Görür N, Oktay FY, Seymen İ, Şengör AMC. 1984. Paleotectonic evolution of the Tuzgölü basin complex, Central Turkey. Sedimentary record of a Neo-Tethyan closure, The Geological Evolution of the Eastern Mediterranean. *Geology Society Special Publication*, 17, In J.E. Dixon, and A.H.F. Robertson (eds.). Oxford, UK, pp: 467-482.

Heriawan M N, Hafizsyah RA, Hanunah J S, Hede A N H, Malik D. 2020. Surface and subsurface fracture zones modeling using automatic lineament analysis and geostatistical method, with case study of Wayang Windu geothermal field, West Java, Indonesia. *Earth Environ Sci*, 417: 012007. <https://doi.org/10.1088/1755-1315/417/1/012007>

Koçyiğit A. 2000. General neotectonic characteristics and seismicity of Central Anatolia, Haymana-Tuzgölü-Ulukışla basenlerinin uygulamalı çalışması (workshop). URL: <http://tpjd.org.tr/images/bultenler/pdf/haymana5.pdf> (accessed date: March 15, 2024).

Koçyiğit A. 2003. Orta anadolunun sismisitesi ve neotektonik özellikleri. *Türkiye Petrol Jeolog Der*, 5: 1-26.

Kürçer A, Gökten YE. 2011. Paleoseismic Trenching on the southern part of Tuzgölü Fault Zone, Central Anatolia, Turkey. *Geophysical Research Abstracts Vol. 13*, EGU2011-5767, 3 – 8 April, Vienna, Austria, pp: 43.

Kürçer A. 2012. Tuz Gölü Fay Zonu'nun neotektonik özellikleri ve paleosismolojisi, Orta Anadolu, Türkiye. Doktora Tezi, Ankara Üniversitesi, Fen Bilimleri Enstitüsü, Ankara, Türkiye, ss: 318,

Kürçer A, Gökten YE. 2014. Paleosismolojik üç boyutlu sanal fotoğraflama yöntemi, örnek çalışma: Duru-2011 Hendeği, Tuz Gölü Fay Zonu, Orta Anadolu, Türkiye. *Türkiye Jeoloji Bülteni*, 2014: 57-61.

Mahwa J, Ping J, Leng W, Zhao J, Liu J. 2023. Tectonics and hydrogeochemical features of geothermal waters in Tangyin Rift SE Taihang Mountain. *Geothermics*, 109: 102657. <https://doi.org/10.1016/j.geothermics.2023.102657>

Nouri R, Arian M. 2023. Multifractal modelling of gold

- mineralization and lineaments in the 1: 100,000 Chaapaan sheet (NW IRAN). *J Mining Environ*, 14(3): 973-980. <https://doi.org/10.22044/jme.2023.12919.2343>
- Redouane M, Mhamdi H S, Haissen F, Raji M, Sadki O. 2022. Lineaments extraction and analysis using landsat 8 (OLI/TIRS) in the Northeast of Morocco. *Open J Geol*, 12(5): 333-357. <https://doi.org/10.4236/ojg.2022.125018>
- Sassioui S, Lakhloufi A, Aarab A, Zouggarh A, EL HILALI M, Courba S, Larabi A. 2023. Contribution of remote sensing to mapping lineaments and ore-mineral occurrences in the Taghbalt Region, Moroccan Eastern Anti-Atlas. *Iraqi Geol J*, 2023: 307-323. <https://doi.org/10.46717/igj.56.2D.23ms-2023-10-29>
- Seymen İ. 1981. Kaman (Kırşehir) dolayında Kırşehir Masifi'nin stratigrafisi ve metamorfizması, *Türkiye Jeol Kurumu Bülten*, 24: 7-14.
- Shirazi A, Hezarkhani A, Pour AB. 2022. Fusion of lineament factor (Lf) map analysis and multifractal technique for massive sulfide copper exploration: The Sahlabad area, East Iran. *Minerals*, 12(5): 549. <https://doi.org/10.3390/min12050549>
- Skakni O, Hlila R, Pour AB, Martín M, Maate A, Maate S, Hossain MS. 2022. Integrating remote sensing, GIS and in-situ data for structural mapping over a part of the NW Rif belt, Morocco. *Geocarto Inter*, 37(11): 3265-3292. <https://doi.org/10.1080/10106049.2020.1852611>
- Şaroğlu F, Emre Ö, Boray A. 1992. Türkiye diri fay haritası. Maden Tetkik Arama Genel Müdürlüğü, Ankara, Türkiye, ss: 63.
- Toprak V, Rojay B. 1997. Neojen peçenek havzasının jeolojik evrimi (Orta Anadolu). Selçuk Üniversitesi, Mühendislik-Mimarlık Fakültesi, Jeoloji Bölümü, 20 yıl Sempozyumu Bildiri Özleri, 12-16 Mayıs, Konya, Türkiye, ss: 125-127.
- Uçar L. 2008. Hanobası-Karapınar (KB Aksaray) alanının stratigrafik incelenmesi. *Geosound*, 2008: 52-61.
- Uygun A. 1981. Tuzgölü havzasının jeolojisi, evaporit oluşumları ve hidrokarbon olanakları. TJK İç Anadolu Sempozyumu, Ankara, Türkiye, ss: 66-71.