



Convex Loom Weights in the Akarçay Basin and its Surroundings

Özdemir Koçak¹ , Kamal Bayramov² 



¹Prof. Dr., Selçuk University, Faculty of Letters,
Department of History, Konya, Türkiye
²Selçuk University, Faculty of Letters,
Department of History, Konya, Türkiye

ORCID ID: Ö.K. 0000-0003-2284-0441;
K.B. 0000-0003-2358-2528

Corresponding author:

Özdemir Koçak,
Selçuk Üniversitesi, Edebiyat Fakültesi Tarih
Bölümü, Alaeddin Keykubat Yerleşkesi, Akademi
Mah. Yeni İstanbul Cad. Posta Kodu: 42130,
Konya, Türkiye
E-mail: okocak@selcuk.edu.tr

Submitted: 13.05.2024

Revision Requested: 02.11.2024

Last Revision Received: 03.11.2024

Accepted: 07.11.2024

Citation: Koçak, Ö., & Bayramov, K. (2024).
Convex loom weights in the Akarçay basin and
its surroundings. *Anadolu Arařtırmaları-Anatolian
Research*, 31, 77–115.
<https://doi.org/10.26650/anar.2024.31.1481942>

ABSTRACT

The Akarçay basin and its surrounding mountainous areas have long been vital for livestock activities and wool and textile production, both in the Bronze Ages and today. Spindle whorls and loom weights discovered in this basin serve as tangible evidence of the high-quality craftsmanship in wool and textile production. Notably, the loom weights, often referred to as “crescent-shaped loom weights” but here termed “convex loom weights,” represent a special material group related to Bronze Age production. These textile loom weights are crucial elements and evidence of Bronze Age textile production, encountered in many settlements throughout the northwest–southeast oriented basin. The Bolvadin Üçhöyük settlement, where these loom weights are intense, is a key hub for production and trade in the area. These loom weights are divided into different groups based on their form, with the “crescent-shaped” ones being the most prevalent. These artifacts significantly enhance our understanding of wool and textile production, as well as livestock activities in the region.

Keywords: Akarçay basin, Inner-West Anatolia, convex loom weights, crescent-shaped loom weights, Üçhöyük



Introduction

The Akarçay basin stretches from İhsaniye–Sinanpaşa in the west to Akşehir–Tuzlukçu in the east, and around Şuhut and Karaadilli in the south. This closed basin, covering 2,985 km² of plains and a drainage area of 7,340 km², is approximately 130 km long and 20 km wide. The elevation ranges from 960 m to 2,611 m (Ardos 1978, 30, 63, 70; Darkot & Tuncel 1988, 11; Kargioğlu, Serteser, Şenkul & Özdemir 2008, 33; Yılmaz 2005, 4; Kuzay & Tombul 2020, pp. 53-54; Akarçay Havzası Taşkın 2019, 5 ff.; Akarçay Havzası Sektörel (2019-2024) 2018), encompassing the Sincanlı Plain in the west, Şuhut Plain in the south, the Afyonkarahisar and Bolvadin Plains in the north, and the Akşehir Plain in the east. The Akarçay River, which sustains the basin, originates near İhsaniye and Sinanpaşa, extends from the Afyonkarahisar city center to Çobanlar, forms a delta south of Bolvadin, and flows into Lake Eber. This river basin has provided a favorable living environment since the Neolithic Age. Its significance lies in the natural corridor it forms, surrounded by the Sultandağı Mountains, Akşehir and Eber Lakes, Emirdağ Mountains, Paşadağ Mountains, Karakuş Mountains, Kumalar Mountains. This corridor serves as a crucial transition point, connecting Central Anatolia to the western half of Anatolia (Ardos 1978, 30, 70; Darkot & Tuncel 1988, 11; Taş & Yakar 2010, pp. 71-72; Kargioğlu et al., 2008, 33; Akarçay Havzası Sektörel (2019-2024) 2018; Kuzay & Tombul 2020, pp. 53-54; Akarçay Havzası Taşkın 2019, 5 ff.; Afyonkarahisar İli Doğa Turizmi Master Planı, 31).

Our study, conducted within the scope of surveys around Afyonkarahisar, covers most of the Akarçay basin and extends southward toward Küçük Ova, Sandıklı Ovası, and Çölovası (Figure 3). We identified 98 crescent-shaped loom weights/samples during these surveys (Table 1).

Table 1: Settlements where loom weights were found, their dimensions, find status (sizes and elevations are given in meters)

FIND CENTER		SIZE			FIND STATUS		TOTAL FINDS
District	Settlement	Size	Height	Elevation	Broken	Intact	
İhsaniye	Alanlı Höyük	90x90	6	-	1	-	1
	Yukarıtandır	260x220 (KG-DB)	17	1088	2	-	2
	Manastır Çeşme	90x90	-	-	1	-	1
	Ablak Höyük	460x350 (KG-DB)	21	1043	8	-	8
	Çiftlik Höyük	360x330 (KD-GB / KB-GD)	14	1066	-	1	1
Sinanpaşa	Küçük Höyük	520x470 (KG-DB)	14	1091	2	1	3
	Nuh Höyük	90x210 (KG-DB)	8	1195	3	-	3
	Kımk Höyük	410x310 (KG-DB)	10	1152	5	-	5
Afyonk. Merkez	Kırınardı Mevkii	250x110 (KD-GB / KB-GD)	7	1045	3	-	3
	Çorca Höyük	240x280 (KD-GB / KB-GD)	21	1031	2	-	2

İscehisar	Çalışlar Höyük	110x180 (KD-GB / KB-GD)	12	1092	2	-	2
	Sarıçayır Mevkii	180/150 (KG-DB)	5	1346	2	-	2
Bayat	Ahaların Çeşme	150x110 (KG-DB)	-	1103	5	-	5
	Asarcık Höyük	80x80	7	1115	1	-	1
	Köy Kalesi	110x160 (KD-GB / KB-GD)	21	1316	1	-	1
Bolvadin	Yörükkaracaören	-	-	1250	1	-	1
	Üçhöyük	650x700 (KG-DB)	12	996	16	1	17
Emirdağ	Tezköy	190x150 (KG / KB-GD)	25?	1068	1	-	1
	Akçaşar Höyük	180x240 (KG-DB)	14	1080	1	-	1
Hocalar	Örencik Köyiçi	-	-	1159	1	-	1
Sandıklı	Örenkaya Üyük.	230x270 (KG-DB)	22	1040	5	-	5
	Menteş Höyük	430x470 (DB / KD-GB)	11	1076	2	1	3
Dinar	İsmail Höyük	-	-	-	3	-	3
	Tüysüz I	140x110 (KG-DB)	7	1455	1	-	1
	Alpaslan Höyük	400x430 (DB / KB-GD)	10	1142	2	-	2
	Akgün Tepe H.	260x260	7	1033	4	-	4
	Kerim Çayırı	120x190 (KD-GB)	5	1123	3	-	3
Şuhut	Pınarbaşı Höyük	190x280 (KD-GB / KB-GD)	20	1099	1	-	1
	Mahmut Höyük	320x320	9	1142	9	-	9
	Hasanlı Höyük	220x210 (KD-GB / KB-GD)	10	1105	5	-	5
	Anayurt Mevkii	600x600	3	1131	1	-	1
TOTAL	31 settlement	-	-	-	94	4	98

Convex Loom Weights

The diverse plains and surrounding mountainous areas of the Akarçay basin provide an ideal setting for agriculture, animal husbandry, and consequently, wool and textile production. Numerous pieces of evidence support these production activities in the region. The abundance of Bronze Age loom weights clearly documents the region's animal husbandry, wool and textile production, and trade activities in the region (Koçak, Bilgin & Küçükbezi 2019; Koçak, Baytak & Esen 2021)¹.

A notable group of finds related to textile production is the loom weights, commonly referred to as “crescent-shaped loom weights” which we term “convex loom weights.” The scientific community has long debated the function and definition of these objects². Their discovery alongside other loom weights and textile-related materials during excavations

1 In this study, the examples we found during the surveys conducted in the region were evaluated. The finds from Kusura, which is located in the vicinity and where short-term excavations were carried out, were used for comparison where relevant.

2 For discussion, see Lassen 2013, pp. 80-81; Lassen 2015, 136. See Koçak et al., 2021, 722-723.

suggests their use in warp-weighted looms (Korfmann 1983, 33 ff.; Lassen 2013, pp. 83-84, 89-90; Lassen 2015, pp. 128-129; Kull 1988; Mellaart & Murray 1995, 120; Goldman 1956, 319). Crescent-shaped loom weights are found in various contexts, such as palaces, temples, domestic areas, and tombs (Lassen 2015, 128-129).

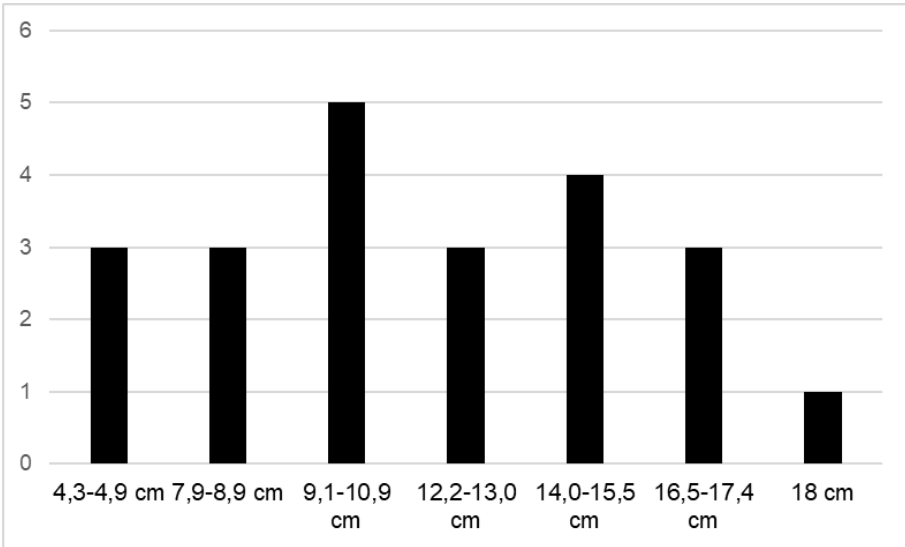


Figure 1: Approximate distances between holes in loom weights

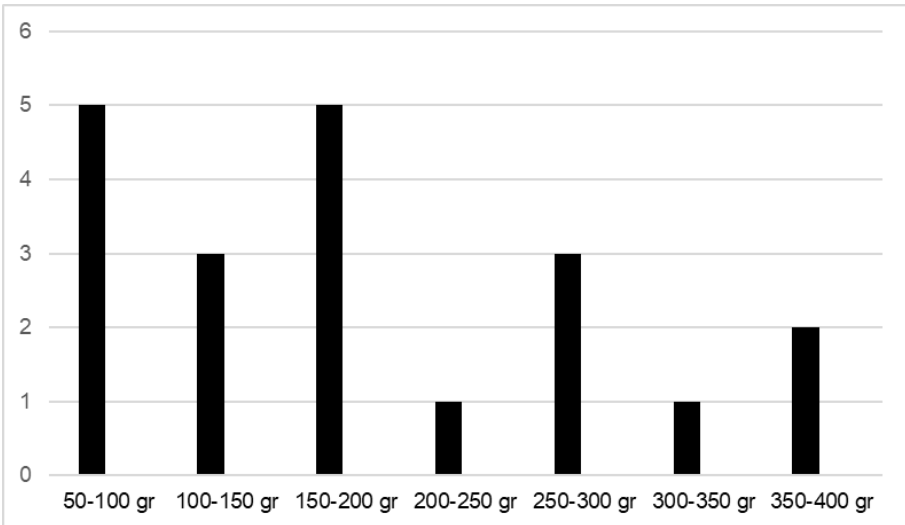


Figure 2: Average masses of loom weights

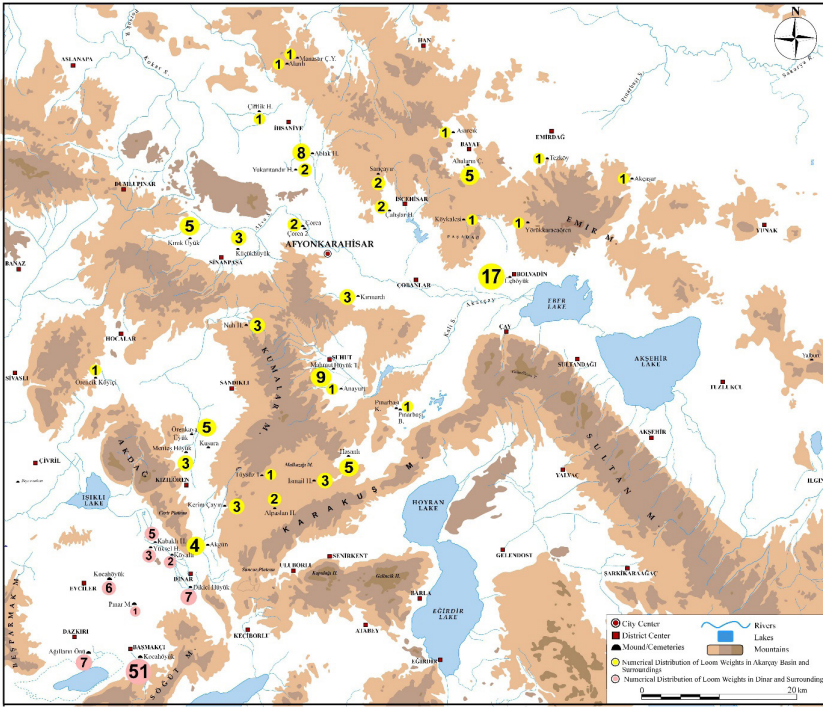


Figure 3: Distribution of loom weights found in Akarçay basin and its surrounding



Figure 4: Bolvadin Üçhöyük settlement

Table 2: Dimensions and mass weights of loom weights (dimensions are given in cm, weights are given in grams)

Sequence No	Inventory No Find Location	Figure No	Find Status	Length (available)	Length (approximately)	Width	Thickness	Height	Hole Diameter	Distance Between Holes	Current Weight	Weight (whole)
1	313.12.16.52 Tüysüz I	Figure 1:10; 8:8	Broken 1/2	7	-	2,6	2,4	-	0,4x0,5	-	64	-
2	307.26.16.23 Alpaslan H.	Figure 13:10; 9:10	Broken 1/3	5,2	-	2,2	2,2	-	Broken	-	35	-
3	307.26.16.34 Alpaslan H.	Figure 12:8; 8:6	Broken 1/3	4,9	-	2,2	1,9	-	0,4x0,5	-	30	-
4	313.14.16.21 Akgün Tepe H.	Figure 13:23; 9:23	Broken 1/2	8,2	-	2,8	2,4	-	0,4x0,5	-	64	-
5	313.14.18.98 Akgün Tepe H.	Figure 12:21; 8:19	Broken 1/2	10,7	21,1	4,3	2,8	9,1	0,5	18	148	296
6	313.14.18.144 Akgün Tepe H.	Figure 11:19; 7:18	Broken 1/3	5,1	-	2,7	2,8	-	0,3x0,4	-	45	-
7	313.14.18.121 Akgün Tepe H.	Figure 11:12; 7:12	Broken 1/4	5,5	-	3,3	1,8	-	Broken	-	35	-
8	308.19.16.20 İsmail Höyük	Figure 13:15; 9:15	Broken 1/3	8,4	-	3,7	2,8	-	Broken	-	139	-
9	308.19.16.23 İsmail Höyük	Figure 13:16; 9:16	Broken 1/2	6,8	-	3,1	2,6	-	0,3x0,4	-	75	-
10	308.19.16.12 İsmail Höyük	Figure 12:16; 8:14	Broken 1/3	5,6	-	3	2,4	-	0,4x0,6	-	59	-
11	313.18.16.06 Kerim Çayırı	Figure 13:18; 9:18	Broken 1/2	9,6	17,1	3,3	2,6	5,2	0,7x0,8	16,5	162	324
12	313.18.16.59 Kerim Çayırı	Figure 11:16; 7:16	Broken 1/3	5,9	-	2,1	2	-	Broken	-	46	-
13	313.18.16.31 Kerim Çayırı	Figure 11:5; 7:5	Broken 1/2	10,5	17,2	2,4	1,9	5,7	0,5	17	66	132
14	310.10 Örencik Köyiçi	Figure 11:7; 7:7	Broken 1/4	4	-	2,4	2,2	-	Broken	-	47	-
15	304.32.07.130 Tezköy	Figure 11:11; 7:11	Broken 1/2	6,7	-	2,9	3,2	-	Broken	-	80	-
16	304.27.07.130 Akçaşar H.	Figure 12:2	Broken 1/2	7	-	3,8	2,9	-	Broken	-	-	-

17	301.09.02.23 Y.Karacaören	Figure 14:11; 10:11	Broken 1/2	4,3	7,5	2,9	2,1	4,8	0,3x0,6	4,9	40	80
18	Üçh.22.YB.66 Üçhöyük	Figure 12:22; 8:20	Broken 1/3	5,5	-	3,9	2	-	0,6x0,9	-	47	-
19	Üçh.22.YB.81 Üçhöyük	Figure 12:5; 8:3	Broken 1/4	4,8	-	2,9	2,4	-	0,6	-	28	-
20	Üçh.22.YB.61 Üçhöyük	Figure 13:6; 9:6	Broken 1/5	4,1	-	3,5	2	-	0,4x0,6	-	27	-
21	Üçh.22.YB.62 Üçhöyük	Figure 14:8; 10:8	Broken 1/2	7	12	4,1	2,5	3	0,6x0,7	8,5	94	188
22	Üçh.22.YB.77 Üçhöyük	Figure 14:7; 10:7	Broken 1/3	5,2	-	3,6	1,9	-	0,5x1	-	51	-
23	Üçh.22.YB.149 Üçhöyük	Figure 13:25; 9:25	Broken 1/2	7,7	-	3,5	3,1	-	0,5x0,7	-	103	-
24	Üçh.21.YB.01 Üçhöyük	Figure 11:21; 7:20	Broken 1/3	4,1	-	2,5	1,5	-	0,3x0,4	-	19	-
25	Üçh.21.YB.02 Üçhöyük	Figure 12:25; 8:23	Broken 1/2	8,7	18	3,1	2	7	0,6x0,8	15,1	63	126
26	Üçh.21.YB.03 Üçhöyük	Figure 11:24; 7:23	Broken 1/3	6,1	-	3,4	2	-	0,5x0,9	-	43	-
27	Üçh.21.YB.04 Üçhöyük	Figure 13:13; 9:13	Broken 1/2	6,5	-	2,7	2,3	-	0,5	-	53	-
28	Üçh.21.YB.05 Üçhöyük	Figure 14:1; 10:1	Broken 1/2	6,8	13	3,3	2,2	6,8	0,4x0,6	9,1	71	142
29	Üçh.21.YB.06 Üçhöyük	Figure 13:4; 9:4	Broken 1/3	7,1	-	3,2	1,9	-	0,5x0,7	-	48	-
30	Üçh.21.YB.07 Üçhöyük	Figure 14:12; 7:12	Broken 1/2	4,5	10,2	3,9	2		0,8x1	8,9	48	96
31	Üçh.21.YB.08 Üçhöyük	Figure 12:11; 8:9	Broken 1/3	6,3	-	3,6	1,9	-	0,7x0,9	-	47	-
32	Üçh.21.YB.09 Üçhöyük	Figure 13:2; 9:2	Broken 1/4	5,5	-	4,2	1,6	-	0,7x1,1	-	47	-
33	Üçh.21.YB.10 Üçhöyük	Figure 12:13; 8:11	Broken 1/4	5,4	-	4,4	2,2	-	0,6x0,9	-	64	-
34	Üçh.21.A.L1.54 Üçhöyük	Figure 14:15; 10:15	Tüm	8	Tüm	3,1x4,2	1,4x2	8	0,3x0,7	4,9	84	84
35	318.11.20.27 Alanlı Höyük	Figure 13:5; 9:5	Broken 1/2	5,6	11,5	3	2,8	6	0,6x0,7	9,7	55	165

36	318.03.18.104 Yukarıtandır H.	Figure 14:6; 10:6	Broken 1/2	4,9	-	2	3,2	-	0,6x0,7	-	39	-
37	318.03.18 Yukarıtandır H.	Figure 12:18 8:16	Broken 1/2	5,7		3	2,7	-	0,2x0,5	-	60	-
38	318.12.20.123 Manastır Çeşme	Figure 11:20; 7:19	Broken 1/4	4,3	-	5,5	2,7	-	0,8x1	-	59	-
39	318.02.18.67 Ablak Höyük	Figure 14:13; 10:13	Broken 1/2	6,2	11,3	4,2	2,5	7,8	0,5x0,8	7,9	84	168
40	318.02.18.30 Ablak Höyük	Figure 12:24; 8:22	Broken 1/2	5,7	-	3,2	2,8	-	0,5x0,7	-	78	-
41	318.02.19.263 Ablak Höyük	Figure 12:20; 8:18	Broken 1/3	5	-	2,1	2	-	0,4x0,7	-	34	-
42	318.02.19.208 Ablak Höyük	Figure 12:28; 8:26	Broken 1/5	3,3	-	2,9	1,6	-	0,8x1	-	16	-
43	318.02.19.265 Ablak Höyük	Figure 12:27; 8:25	Broken 1/5	4,3	-	3,4	2,1	-	0,5x0,7	-	27	-
44	318.02.19.204 Ablak Höyük	Figure 12:23; 8:21	Broken 1/5	4,8	-	3,3	2	-	0,5x0,6	-	42	-
45	318.02.19.343 Ablak Höyük	Figure 12:6; 8:4	Broken 1/2	6,2	-	4,1	2,5	-	Broken	-	77	-
46	318.02.19.178 Ablak Höyük	Figure 13:19; 9:19	Broken 1/2	8	-	2,6	2,4	-	Broken	-	63	-
47	318.08.20.12 Çiftlik Höyük	Figure 11:1; 7:1	Tüm	16,9	16,9	3,1	3,1		0,5x0,8	14	64	64
48	307.03.20.161 Çalışlar Höyük	Figure 13:26; 9:26	Broken 1/2	6,6	-	3,1	2,3	-	Broken	-	72	-
49	307.03.20.158 Çalışlar Höyük	Figure 2:12; 5:10	Broken 1/5	4	-	3,6	1,8	-	0,9	-	33	-
50	311.22.18.120 Pınarbaşı H.	Figure 12:15; 8:13	Broken 1/2	6,3	-	2,3	2,2	-	0,5x0,7	-	44	-
51	311.06.11.95 Mahmut Höyük	Figure 11:8; 7:8	Broken 1/3	7,2		3,5	2,2	-	Broken	-	76	-
52	311.06.11.125 Mahmut Höyük	Figure 11:2; 7:2	Broken 1/3	5,7	-	1,8	1,6	-	Broken	-	24	-
53	311.06.11.05 Mahmut Höyük	Figure 13:20; 9:20	Broken 1/2	7,5	-	2,6	1,5	-	Broken	-	44	-

54	311.06.11.88 Mahmut Höyük	Figure 13:30; 9:30	Broken 1/3	5,5	-	2,4	2,4	-	Broken	-	50	-
55	311.06.11.150 Mahmut Höyük	Figure 11:9; 7:9	Broken 1/2	6,9	14,5	1,8	1,9	4,3	0,4x0,5	12,5	35	70
56	311.26.12.30 Mahmut Höyük	Figure 11:6; 7:6	Broken 1/4	3,7	-	2,2	2,1	-	Broken	-	28	-
57	308.20.09.158 Mahmut Höyük	Figure 13:7; 9:7	Broken 1/5	3,5	-	2,4	1,7	-	0,4x0,6	-	18	-
58	311.06.11.149 Mahmut Höyük	Figure 13:3; 9:3	Broken 1/4	3,5	-	2,2	2,3	-	0,2x0,4	-	24	-
59	311.06.11.121 Mahmut Höyük	Figure 13:27; 9:27	Broken 1/2	8,1	-	2,5	2,4	-	0,5	-	74	-
60	311.26.12.20 Hasanlı Höyük	Figure 13:14; 9:14	Broken 4/5	14	15,1	2,7	2	6,6	0,6x0,7	12,2	133	166
61	311.26.72.53 Hasanlı Höyük	Figure 12:14; 8:12	Broken 1/2	6,5	-	2,1	2	-	0,4	-	49	-
62	311.26.12.27 Hasanlı Höyük	Figure 11:4; 7:4	Broken 1/3	7,2	-	2,7	1,9	-	Broken	-	58	-
63	311.26.12.54 Hasanlı Höyük	Figure 13:9; 9:9	Broken 1/4	5,5	-	2,5	2,3	-	Broken	-	50	-
64	311.26.12.43 Hasanlı Höyük	Figure 13:24; 9:24	Broken ½	7	-	2,8	2,5	-	0,4	-	81	-
65	311.31.12.181 Anayurt Mevkii	Figure 11:3; 7:3	Broken 1/3	6	-	1,9	1,8	-	Broken	-	26	-
66	309.12.10.26 Örenkaya Ü.	Figure 11:14; 7:14	Broken 1/2	8,5	-	3	2	-	Broken	-	77	-
67	309.12.18.142 Örenkaya Ü.	Figure 11:23; 7:22	Broken 1/4	5	-	2,8	2,9	-	0,5x0,6	-	46	-
68	309.12.18.113 Örenkaya Ü.	Figure 14:14; 10:14	Broken 3/4	10	13,4	3	3,4	7	0,7	10	179	223
69	309.12.18.146 Örenkaya Ü.	Figure 12:9; 8:7	Broken 1/2	7,7	-	2,5	2	-	0,3x0,4	-	59	-
70	309.12.18.139 Örenkaya Ü.	Figure 13:17; 9:17	Broken 1/2	7,7	-	3,1	3	-	0,4x0,6	-	116	-
71	309.13.18.115 Menteş Höyük	Figure 13:12; 9:12	Broken 1/2	6	-	2,5	1,8	-	0,3x0,5	-	42	-
72	309.13.18.160 Menteş Höyük	Figure 11:17; 7:17	Broken 4/5	14,3	15,9	3,6	3,3	7	0,5x0,6	15,5	221	265
73	309.13.10.04 Menteş Höyük	Figure 13:22; 9:22	Tüm	17,1	17,1	2,9	2,8	7,2	0,5	14,9	-	-

74	306.08.05.131 Ahaların Çeşme	Figure 14:4; 10:4	Broken 1/2	6,6	-	3,5	2,8	-	0,5x0,8	-	102	-
75	306.08.05.128 Ahaların Çeşme	Figure 13:1; 9:1	Broken 1/2	8,8	18,2	4,3	3,7	8,5	0,6x0,8	13	187	374
76	306.08.05.129 Ahaların Çeşme	Figure 14:3; 10:3	Broken 1/3	6,5	-	3,9	2,2	-	0,3x0,8	-	74	-
77	306.08.05.130 Ahaların Çeşme	Figure 12:26; 8:24	Broken 1/4	5,7	-	4,9	3,4	-	0,5x0,8	-	97	-
78	306.08.05.127 Ahaların Çeşme	Figure 11:15; 7:15	Broken 1/2	7,6	-	4,1	2,7	-	0,5x0,6	-	119	-
79	306.04.05.470 Asarcık Höyük	Figure 11:18	Broken 1/3	5,4	-	2,9	1,5	-	0,5	-	-	-
80	306.01.06.365 Köy Kalesi	Figure 12:4	Broken 1/4	5	-	2,6	3,4	-	0,6	-	-	-
81	308.15.08.151 Kınık Höyük	Figure 12:3; 8:2	Broken 1/3	4,1	-	2,1	2	-	0,5x0,6	-	22	-
82	308.15.09.133 Kınık Höyük	Figure 12:7; 8:5	Broken 1/2	6,4	-	1,9	1,9	-	0,5	-	35	-
83	308.15.09.121 Kınık Höyük	Figure 11:13; 7:13	Broken 1/2	10,5	20,1	2,9	2,1	6	0,3x0,6	17,4	86	172
84	308.15.08.126 Kınık Höyük	Figure 11:10; 7:10	Broken 1/3	6,9	-	2,6	2	-	Broken	-	47	-
	308.15.08.48 Kınık Höyük	Figure 12:17; 8:15	Broken 1/3	5,9	-	2,1	2,4	-	0,5x0,6	-	46	-
86	308.20.18.414 Küçük Höyük	Figure 14:5; 10:5	Broken 1/2	7,5	13,1	4	4	8,1	0,6x1	10,4	178	356
87	308.20.18.397 Küçük Höyük	Figure 12:19; 8:17	Broken 1/2	6	-	2,5	2,5	-	0,5	-	44	-
88	308.20.18.07 Küçük Höyük	Figure 14:9; 10:9	Tüm	13,6	13,6	4	3,9	8,5	0,6x0,9	10,9	-	-
89	308.16.09.196 Nuh Höyük	Figure 13:21; 9:21	Broken 1/4	4,8	-	1,9	2	-	0,4	-	31	-
90	308.16.09.198 Nuh Höyük	Figure 12:1; 8:1	Broken 1/3	6	-	3,3	2,4	-	0,5x0,7	-	62	62
91	308.16.09.110 Nuh Höyük	Figure 11:22; 7:21	Broken 1/4	4,4	-	2,5	2,2	-	0,4x0,6	-	25	-
92	317.12.17.55 Kırınardı M.	Figure 14:10; 10:10	Broken 1/2	7	-	3,2	1,9	-	0,5x0,8	-	52	-

93	317.12.17.15 Kırınardı M.	Figure 13:29; 9:29	Broken 1/2	6,7	-	2,9	2,9	-	0,6x0,8	-	85	-
94	317.12.17.23 Kırınardı M.	Figure 14:16; 10:16	Broken 2/3	5	6,2	3	2,4	5,4	0,5	4,3	49	65
95	317.18.18.22 Çorca Höyük	Figure 13:8; 9:8	Broken 1/3	5,1	-	2	1,9	-	0,3x0,5	-	31	-
96	317.18.18.60 Çorca Höyük	Figure 13:11; 9:11	Broken 1/3	5,1	-	2,2	1,8	-	0,5	-	24	-
97	307.08.06.66 Sarıçayır M.	Figure 14:2; 10:2	Broken 1/2	6,8	-	4,3	3,3	-	0,5x0,8	-	109	-
98	307.08.36.69 Sarıçayır M.	Figure 13:28; 9:28	Broken 1/2	8	-	2,7	2,1	-	0,5	-	72	-

Common terms like “crescent-shaped loom weights” and “arc-shaped loom weights” may not fully encompass the variety of these weights, especially those resembling “horseshoe/U” or “V” forms. A careful classification of the material repertoire might lead to a more inclusive term, such as “**convex loom weights**.” This typological distinction could be based on the ratio between the lengths and widths of the loom weights, their cross-sections, and other characteristics. (Koçak et al., 2021, Figure 11).

Form Properties

In evaluating the “crescent-shaped loom weights” east of the Büyük Menderes River basin, three main forms are identified: Type 1, which is open-mouthed and crescent-shaped; Type 2, which is deeply convex or “V”-shaped; and Type 3, which is horseshoe- or “U”-shaped (Koçak et al., 2021, 731-732, Figure 11).

These loom weights are categorized into three groups based on form. Type 1 include those whose length is at least twice or more their height. Type 2 comprises weights whose length is less than twice their height or whose lower parts become sharper and evolve into a “V” shape. Type 3, less commonly found, is horseshoe- or “U”-shaped.

In this study, Type 1, or arc-shaped weights, were further divided into two subgroups: “open-mouthed” and “crescent-shaped,” based on variations in length and width. Of the 98 loom weights examined, 85 belong to this group, with 1/3 of them being open-mouthed and the remainder crescent-shaped. Among the open-mouthed samples, an intact loom weight from Çiftlik Höyük (Figure 11: 1; 7: 1) stands out owing to its less convex curve. Similar weights are found in the MBA layers of Seyitömer (Karaoğlan 2018, 24, Figure 3: d20),

Demircihöyük and Beycesultan³. The open-mouthed, slightly convex loom weights typically have quadrangular cross-sections with rounded corners and tips (Figure 11; 7), though some feature pointed corners. Similar examples are found in the Menderes basin (Koçak et al., 2021, pp. 731-732, Figure 11), Beycesultan (Mellaart & Murray 1995, 172, Figure O.22: 216; 173, Figure O.2: 219; Mixed Layer; PLATE XIV(b)), Aphrodisias⁴, Gordion⁵, Konya Karahöyük (Alp 1994, Lev. 143-245) and Boğazköy (Fischer 1963, 75, 153, TAFEL 126: 1208, 1203, 1207). Crescent-shaped loom weights are mostly quadrangular in cross-section with rounded corners and tips (Figures 12-13; Figure 8-9), though a few are oval or elliptical. Angular and pointed samples are generally rare. Similar crescent-shaped loom weights are found in the Menderes basin (Koçak et al., 2021, pp. 732-733), Demircihöyük (Kull 1988, pp. 200-204, Tafel 36, 38-40, 42-44, 46, 48), Beycesultan (Mellaart & Murray 1995, 119, 165, Figure O.15: 170, 169, O.19: 205, 206; O.20: 207; 173, O.23: 217), Konya Karahöyük (Alp 1994, pp. 73-101, Plates 143-245), Gordion (Fischer 1963, 75, 153, TAFEL 126: 1208, 1203, 1207), Boğazköy (Fischer 1963, 75, 153, TAFEL 126: 1208, 1203, 1207), Seyitömer (Bilgen 2015, 100, Figure 110; Karaoğlan 2018, 24, Figure 3: d7, d31, d33), Alacahöyük (Koşay & Akok, 1973, pp. 28-30, Lev. XLVIII Pl. XLVIII, Lev. XLIX Pl. XLIX), Erenler Höyük, Aktaş Höyük, Bölme Höyük (Yılmaz & Kalkan 2021, 56, Pl. 2: 17; 15; 13; 10; 6; 3).

In the study area, only 4 convex loom weights were found to be fully preserved, while the remaining 94 were broken. Two of these weights had their surfaces carved and were later repurposed as “burnishing tools” (Figure 13: 25; 9: 25; 14: 1; 10: 1). Of the 18 loom weights, either half or more were preserved. Their approximate weights and lengths were determined based on their preserved parts, including the 4 intact samples, resulting in a total evaluation of 22 loom weights (Table 2; Figure 2).

The lengths of these 22 loom weights vary between 6.2 and 21.1 cm (Table 2; Figure 1). Half of them (11 weights) measure approximately 10–16 cm in length. The distance between the holes of the loom weights varies between 4.3 and 18 cm, while most falling between 9 and 15.5 cm (Koçak et al., 2021, 746, Table 2, 5-6; Figure 3). These samples constitute 54% (12 samples) of the evaluated loom weights. Excluding two shorter samples from Akarçay, there is a similarity with samples from the Menderes basin samples regarding the distance between the holes (Koçak et al., 2021, pp. 749-750, Table 5). A comparison can also be made with Konya Karahöyük (Alp 1994, 70).

3 The loom weight in Beycesultan is an example belonging to the 5th Layer. For a suggestion on the layering of the settlement, see Dedeoğlu & Abay 2014, 9, Pic.32: 11, Table 1. 69; Kull 1988, pp. 196-204, Tafel 48:15.

4 It is similar to the examples in the layers of Aphrodisias from the Bronze Age to the Iron Age. See Joukowsky 1986, II, 701, Fig.495: 1-4; II, 576, Pic.417: 10; II.624, Pic.451, 9, Acropolis Trench 5, F-E Complexes, Bronze Age 4-MBA. For comparison with the Aphrodisias of the Iron Age, see. 701, Fig.495, 1-4, Acropolis, Layer 9, A-5 Complex. For an example of the LBA, see. 682, Fig.487, 9, Acropolis Layer 8, A-4 Complex.

5 Similar examples in Gordion are encountered in the MBA-LBA layers. See Gunter 1991, pp. 84-85, Plate 29: 529.



Figure 5: İhsaniye Ablak Höyük



Figure 6: Şuhut Anayurt Üyükler settlement

Of these 22 samples, the masses of the intact ones from Küçük Höyük (Figure 14: 9) and Menteş Höyük (Figure 12: 22) are unknown. Among the other 20 samples, 65% (13 samples) weighted between 50 and 200 g. The closest comparison can be made with samples from the Menderes basin (Koçak et al., 2021, pp. 749-750, Table 2, 4; Figure 2).



Figure 7: Loom weights

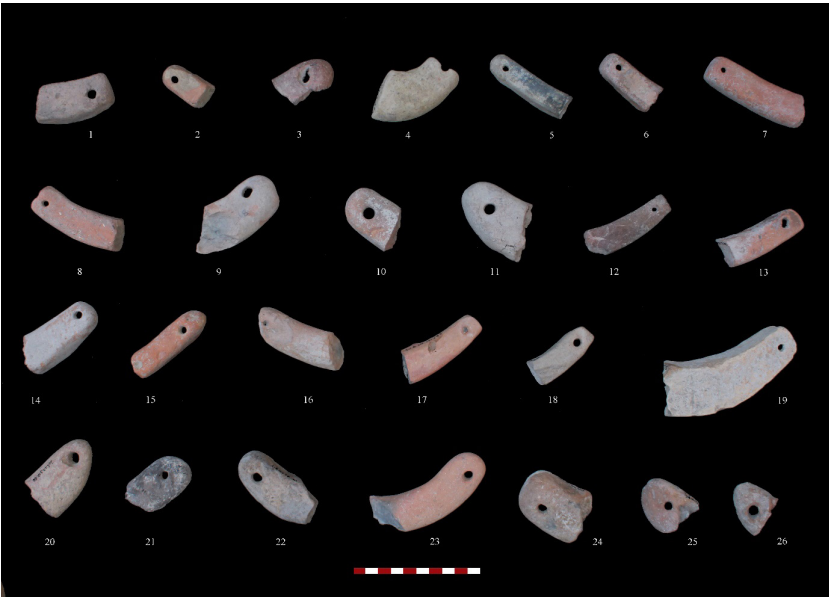


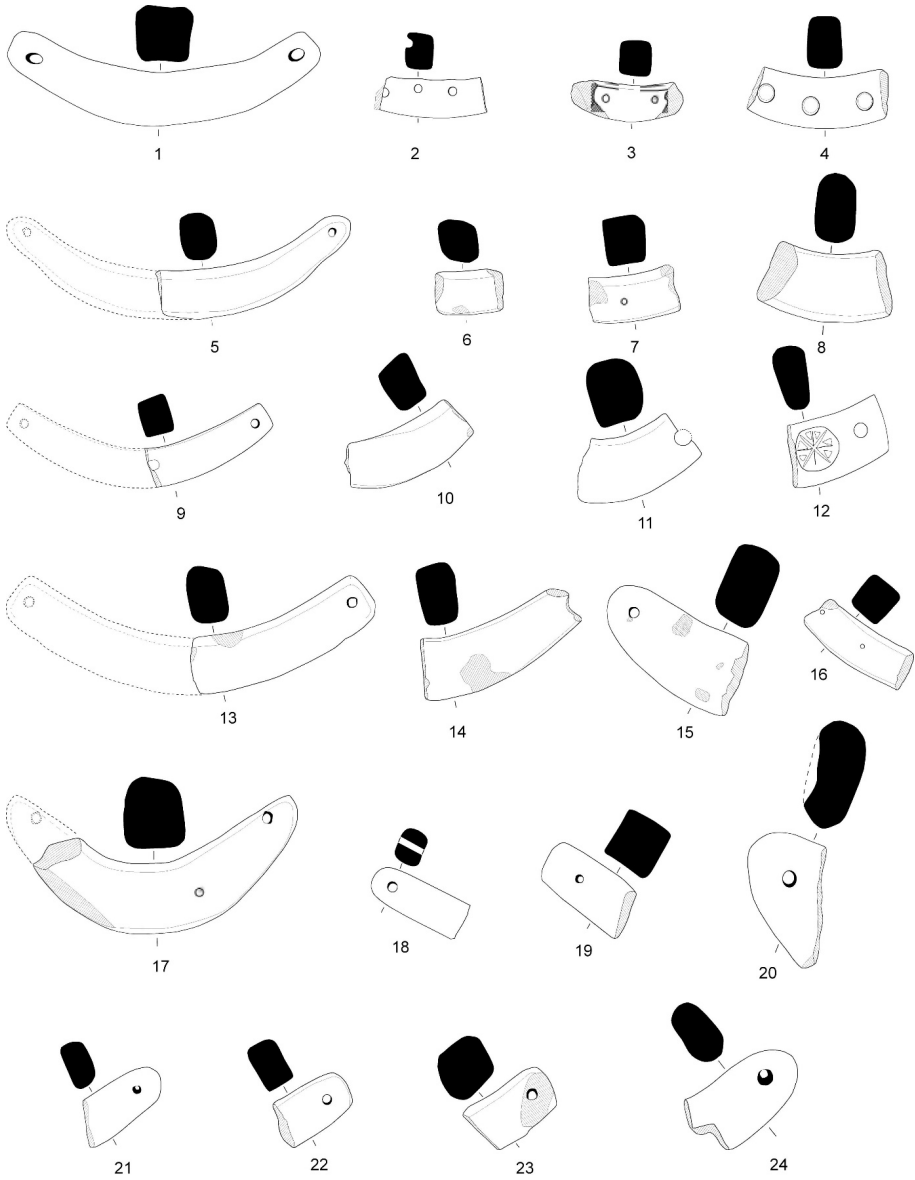
Figure 8: Loom weights



Figure 9: Loom weights



Figure 10: Loom weights



0 10 cm

Figure 11:

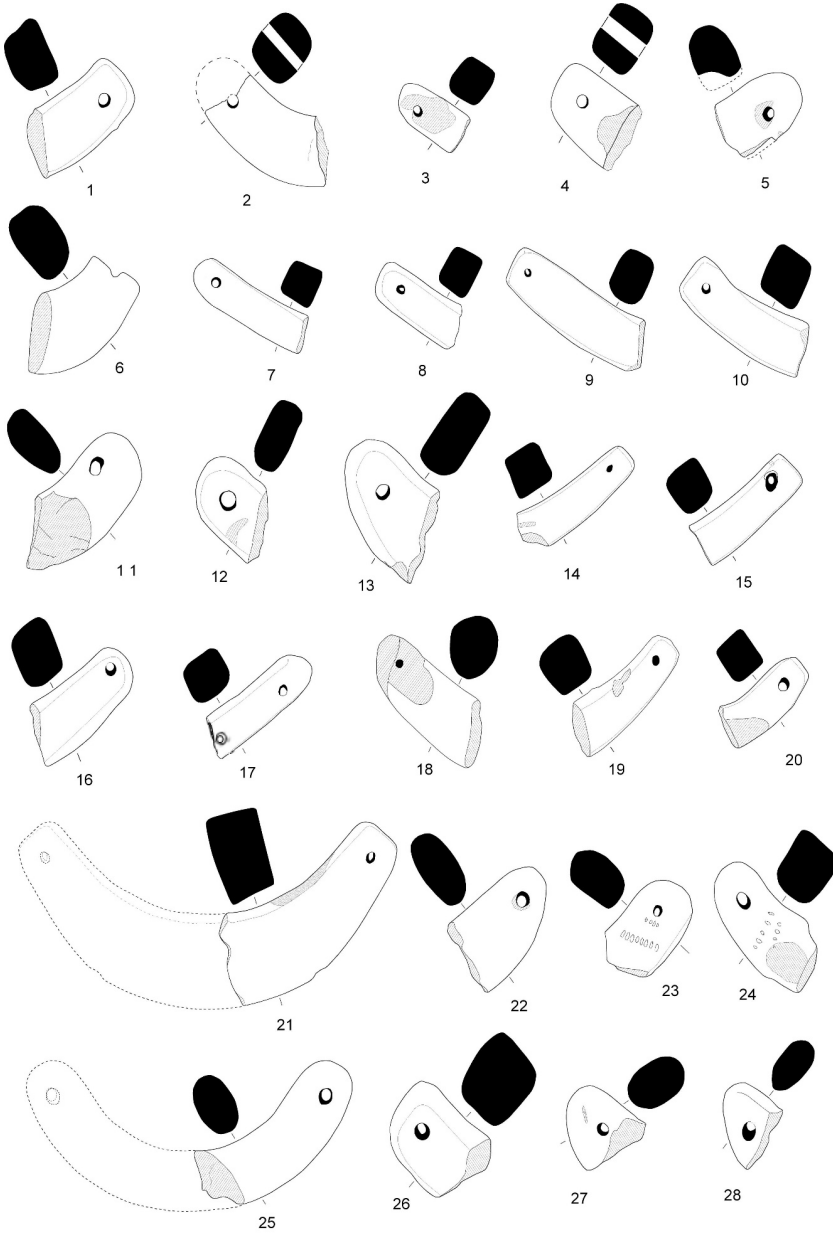


Figure 12:

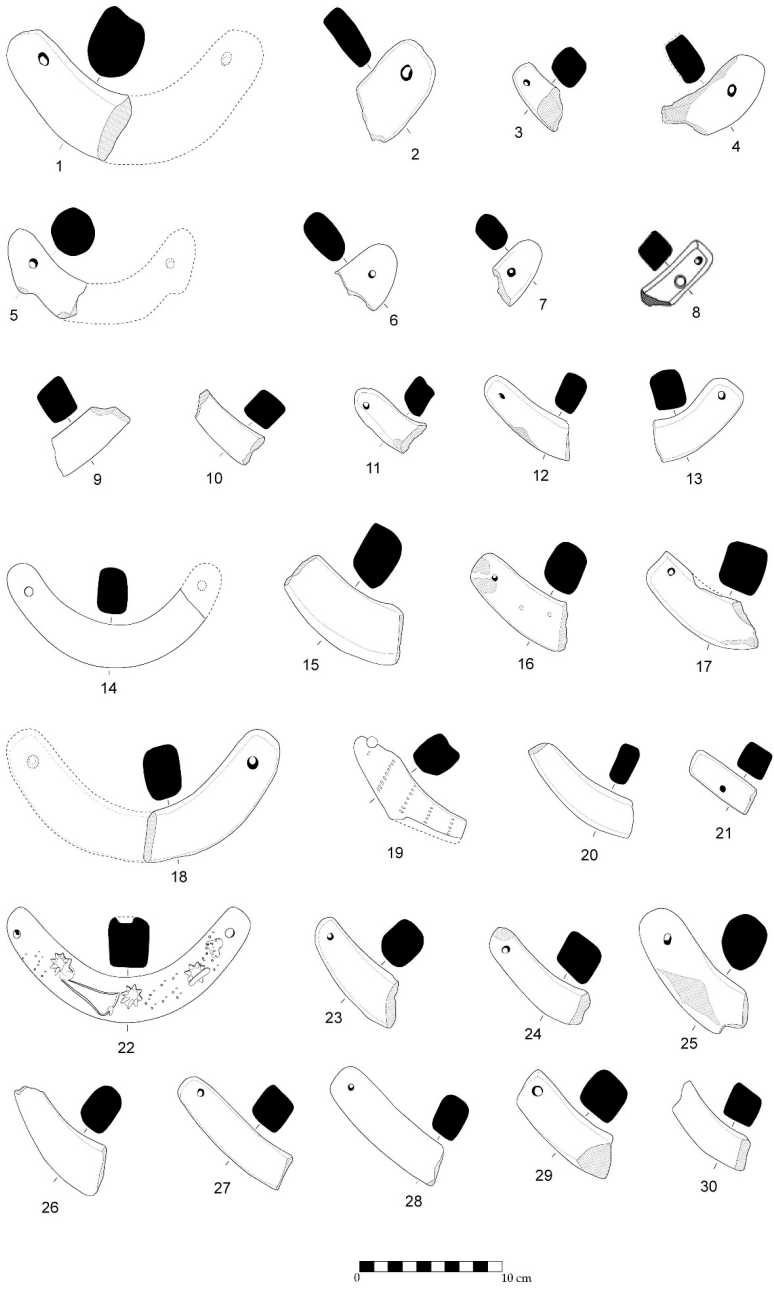


Figure 13:

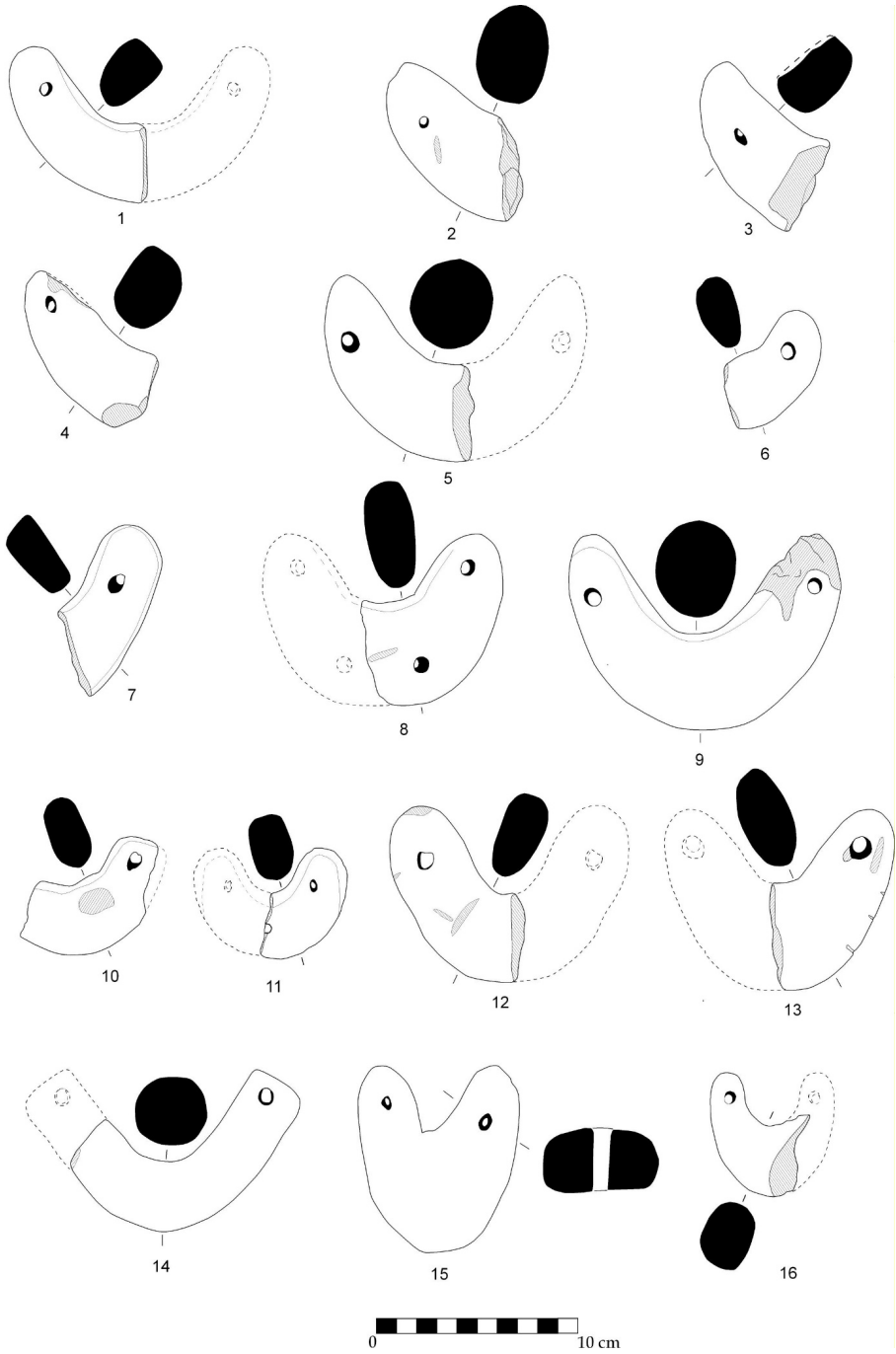


Figure 14:

Among the loom weights we have, very few are “V”- and horseshoe- or “U”-shaped. These samples feature oval, elliptical, and quadrangular cross-sections (Figure 14; 10). There are seven “V”-shaped samples found in Üçhöyük (4), Örenkaya Üyükaltı (1), Ablak Höyük (1) and Mahmut Höyük (1). These loom weights have quadrangular (Figure 13: 27–28, 14: 7; 9: 27–28, 10: 7), elliptical (Figure 14: 12–13, 10: 12–13), and oval (Figure 13: 25, 14: 14; 9: 25, 10: 14) sections. The two elliptical samples from Üçhöyük (Figure 4) and Ablak Höyük (Figure 5) are similar (Figure 14: 12–13; 10:12–13). The oval loom weight found in Örenkaya Üyükaltı differs from the others (Figure 14: 14; 7: 14). Similar “V”-shaped loom weights from Üçhöyük and Ablak Höyük are found in the Menderes basin (Koçak et al., 2021, 731 ff., Figure 6-9, 11; Figure 1-6), Seyitömer (Karaođlan 2018, 24, Figure 3: d18, d23), and Boyalı Höyük (Sipahi 2013-14, 13, Figure 14). The loom weights found in Örenkaya Üyükaltı, Mahmut Höyük, and Sarıçayır can be compared with those from Seyitömer (Karaođlan 2018, 24, Figure 3: d14) and Beycesultan (Ergün 2020, 11, Figure 10, 5b).

We have six horseshoe or “U”-shaped loom weights. Samples from Yörük Karacaören, Ablak Höyük, and Üçhöyük have a complete “U” form. (Figure 14: 8, 15–16; 10: 8, 15–16). Similar examples are found in the Menderes basin (Koçak et al., 2021, 733 ff., Figure 9, 11, Figure 7), Boyalı Höyük (Sipahi 2013-14, 13, Figure 14), Seyitömer (Karaođlan 2018, 24, Figure 3: d15), Demircihöyük (Kull 1988, Tafel, 41, 2; 39, 2, 8), and Beycesultan (Mellart & Murray 1995, 177, Figure O.27: 239, 241). The two samples from Küçük Höyük are not exactly “U”-shaped but show a transition from crescent to a “U” shape (Figure 4: 5, 9; Figure 10: 5, 9). These can be compared with the samples from Seyitömer (Karaođlan 2018, 24, Figure 3: d10), Beycesultan (Ergün 2020, 14, Figure 13: 5a), Demircihöyük (Kull 1988, Tafel 40, 1; 46, 7), and Kültepe.

One of the most distinctive features of the 98 loom weights is their quadrangular cross-section with rounded corners. Among these, arc and crescent shapes are predominant. Crescent-shaped loom weights also include oval elliptical forms (Figures 12: 11, 18, 22, 25, 27, 28; 13: 1, 5, 6, 7, 25; 8: 9, 16, 20, 23, 25, 26; 9: 1, 5, 6, 7, 25). The tips are generally rounded, with a few samples having angular and pointed tips (Figures 11: 9, 13, 17; 7: 9, 13, 17). The U- and V-shaped loom weights mostly have oval and elliptical cross-sections, with rounded tips.

Decoration Features

Standard types of convex loom weights are considered indicative of organized production. In addition, the decorations on these weights are sometimes interpreted as workshop signs (Lassen 2013, 87, pp. 89-90; Koçak et al., 2019, pp. 104-105). During our studies around the Yukarı Menderes (Koçak et al., 2021) and Akarçay basins, many decorated loom weights were identified.

Some loom weights feature scratched or imprinted decorations. One was found in Menteş Höyük (Koçak et al., 2019, pp. 104-105, Figure 95, Plate 44: 363) (Figure 13: 22; 9: 22)⁶ and another in Akgün Tepe Höyük (Figure 11: 12; 7: 12). These prints are thought to be workshop signs. Similar printed loom weights from the 2nd millennium BC are found in Konya Karahöyük (Alp 1995, Lev. 152-183), Beycesultan (Mellaart & Murray 1995, 170; 0.15: 215), and Kusura (Lamb 1936, 34, Figure 15: 2-3). The loom weight from Menteş Höyük closely resembles the Beycesultan sample in both form and imprint.

The decorated samples include notch, dot, and ring-shaped imprints. These loom weights from Ablak Höyük feature horizontal notches (Figure 12: 23-24, 13: 19; 8: 21-22, 9: 19). The decoration starts from the rim's bottom toward the center, with two weights having two rows and one having five rows. This decoration style is common in Konya Karahöyük. Vertical decorations are also present on Karahöyük samples (Alp 1995, the Lev. 242-245). Similar examples are found in Demircihöyük (Kull 1988, Tafel 36: 14; 46: 8). See 41: 3-4; 43: 1-4) and Gordion (Korfmann 1977/1978, pp. 28-29, Tafel 8: 5).

Ring-shaped decorations are located in the middle part of the loom weights and vary according to their sizes. Three of our weights have such decorations. The loom weights from Çorca Höyük (Figure 13: 8; 9: 8) and Kınık Höyük (Figure 12: 17; 7: 15) have one ring decoration, while the one from Hasanlı Höyük (Figure 11: 4; 7: 4) has three. Similar decorated loom weights are found in Beycesultan (Mellaart & Murray 1995, 172; 0.22: 216; Pl. XIV:b. See Ergün 2020, 11, Figure 10) and Konya Karahöyük (Alp 1995, Lev. 164: 503-504; 165: 507-508).

Some loom weights feature holes, typically located at their center. The holes in loom weights from Anayurt Mevkii (Figure 11: 3; 6, 7: 3), Köyiçi Mevkii (Figure 11: 7; 7: 7), Kerim Çayırı (Figure 11: 16; 7: 16), Menteş Höyük (Figure 11: 17; 7: 17), and Mahmut Höyük (Figure 11: 2; 7: 2) are small and shallow. These samples can be compared with finds from Beycesultan (Mellaart & Murray 1995, 169; 0.19: 206; 173; 0.23: 217, 2019; Pl. XIV:b; Tütüncüler 2005, Figure 4.), Kusura C (Lamb 1936, 34, Figure 15:1), and Demircihöyük MBA (Kull 1988, Tafel 39: 2; 48: 10). By contrast, the holes in loom weights from Yörük Karacaören (Figure 14: 11; 10: 11) and Mahmut Höyük (Figure 11: 9; 7: 9) are wider and deeper. The single sample from Üçhöyük (Figure 4: 8; 10: 8), has a central hole similar in shape to those at the tips of loom weights used for hanging ropes.

Most loom weights with visible imprints are angular crescent-shaped. A few rounded types also feature notches and dot decorations.

6 For examples from Karahöyük and Beycesultan see. Alp 1994, 69 ff., Plates 144-245; Mellaart & Murray 1995, pp. 119-120, 169-173, Pic. O.19-0.23.

Dough and Baking

The majority of crescent-shaped loom weights are made from red clay. Of the 98 loom weights, 64 (62%) are red or shades of red. This is followed by brown and pink, with very few made from yellow and gray clays. It is likely that the clay used for these loom weights was obtained from the same deposits used for ceramics. The crescent-shaped loom weights have medium-fine baking quality. Among them, 29 (28%) are well-baked, 52 (50%) are medium-baked, and 17 (16%) are poorly baked. Very few samples are exceptionally well burnished. Rough quality is generally observed in the rounded types. This lack of care in manufacturing suggests a focus on textile production, prioritizing quantity over quality.

Conclusion

The Akarçay basin and its surrounding elevations provide an ideal environment for animal husbandry, which is crucial for obtaining wool required for textile production. During the Bronze Age, textile production and trade were likely significant sources of income in the region.

Loom weights serve as the most important material evidence of textile production from this era. Among these, pyramidal, round, and “crescent-shaped” loom weights hold particular significance.

These loom weights, found in many different settlements around the Akarçay basin, clearly indicate widespread production activities. The high number of samples found in settlements such as Üçhöyük, Ablak Höyük, and Mahmut Höyük in Bolvadin is likely attributed to their proximity to the reserve areas. These production activities could be driven by local needs or, as in the case of Üçhöyük, by surplus products and trade. Üçhöyük, a Bronze Age settlement spanning 50 hectares, may have served as a collection center for wool and textile products.

Crescent-shaped loom weights in the region are divided into three main groups. The first group includes those whose length is at least twice their height. The second group consists of weights whose length is less than twice their height or whose lower parts become sharper and evolve into a “V” shape. The third group comprises horseshoe- or “U“-shaped weights. Approximately 88% of the samples belong to the first group, characterized by a quadrangular cross-section, rounded and tips, with some having oval and elliptical cross-sections. Similar finds from these groups are common in western and Central Anatolia. The “U“- and “V“-shaped samples also have oval and elliptical cross-sections with rounded tips, found in western Anatolia.

Patterns such as grooves, dots, and imprinted decorations, which can be interpreted as possible workshop marks, are present in many loom weights in Anatolia. Most of these loom

weights are made from red clay and lining. Typically, the distance between the holes varies between 9 to 15.5 cm, and their mass varies between 50 and 200 g.

To better interpret the loom weights of the Akarçay basin or Western Anatolian Bronze Age settlements, data from ongoing excavations at the Bolvadin Üçhöyük settlement, an important production and trade center, are crucial.

Acknowledgments: This study was carried out with the permission of the Ministry of Culture and Tourism, General Directorate of Cultural Heritage and Museums, and with the support of Selçuk University Scientific Research Projects Coordination Office and the Turkish Historical Society. We would like to thank these institutions and their officials.

Peer-review: Externally peer-reviewed.

Author Contributions: Conception/Design of Study- Ö.K., K.B.; Data Acquisition- Ö.K., K.B.; Data Analysis/ Interpretation- Ö.K., K.B.; Drafting Manuscript- Ö.K., K.B.; Critical Revision of Manuscript- Ö.K., K.B.; Final Approval and Accountability- Ö.K., K.B.

Grant Support: Selçuk University Scientific Research Projects Coordination Office, "Archaeological Surveys in Afyonkarahisar and Vicinity 2017-2018" (Project no.: 17401020); "2019 Archaeological Surveys and Mapping Studies in Afyonkarahisar and Its Districts" (Project no.: 19401082) "2020 Archaeological Surveys and Mapping Studies in Afyonkarahisar and Its Districts" (Project no: 20401083); "2021 Surveys in and around Bolvadin Üçhöyük Settlement, Mapping and Geophysics Studies" (Project no: 21401092); "2022 Surveys, Mapping and Geophysics Studies in and around Bolvadin Üçhöyük Settlement" (Project no: 22401084).

Conflict of Interest: The authors has no conflict of interest to declare.

References

- Afyonkarahisar İli Doğa Turizmi Master Planı (2013-2023) 2013*, T. C. Orman ve Su İşleri Bakanlığı, Doğa Koruma ve Millî Parklar Genel Müdürlüğü V. Bölge Müdürlüğü, Afyonkarahisar.
- Akarçay Havzası Sektörel Su Tahsis Planı Hazırlanması Projesi. Sektörel Su Tahsisi Eylem Planı ve Genelgesi (2019-2024)*, T.C. Tarım ve Orman Bakanlığı Su Yönetimi Genel Müdürlüğü, Ankara, 2018.
- Akarçay Havzası Taşkın Yönetim Planı*, T.C. Tarım ve Orman Bakanlığı Su Yönetimi Genel Müdürlüğü Taşkın ve Kuraklık Yönetimi Daire Başkanlığı, Mayıs 2019, Ankara.
- Alp, S. (1994). *Konya Civarında Karahöyük Kazılarında Bulunan Silindir ve Damga Mühürleri*, Ankara: TTK Yayınları.
- Ardos, M. (1978). *Afyonkarahisar Bölgesinin Jeomorfolojisi*. İstanbul.
- Bilgen, A. N. & Bilgen, Z. (2015). Orta Tunç Çağ Yerleşimi (IV. Tabaka). In A. N. Bilgen (Ed.), *Seyitömer Höyük I* (pp. 61-118), İstanbul: Arkeoloji ve Sanat Yayınları.
- Darkot, B. & Tuncel, M. (1988). *Ege Bölgesi Coğrafyası*. İstanbul: İ.Ü. Edebiyat Fakültesi.
- Dedeoğlu, F. & Abay, E. (2014). Beycesultan Höyük Excavation Project: New Archaeological Evidence from Late Bronze Layers- Beycesultan Höyük Kazı Projesi: Geç Tunç Çağı Tabakalarına İlişkin Yeni Arkeolojik Veriler. *Arkeoloji Dergisi*, XIX, 1-39.
- Ergün, G. (2020). Late Bronze Age Spindle Whorls and Loom Weights from Beycesultan in Western Anatolia: New Findings, New Observations. *Mediterranean Archaeology and Archaeometry*, 20(2), 1-18.
- Fischer, F. (1963). *Die Hethitische Keramik von Boğazköy*. Berlin.
- Goldman, H. (1956). *Excavations at Gözlü Kule, Tarsus. Volume II. Text. From the Neolithic through the Bronze Age*. London: Princeton University Press.

- Gunter, Ann C. (1991). *The Gordion Excavations Final Reports. Volume III. The Bronze Age*. E. L. Kohler (Ed.), Philadelphia: Published by University of Pennsylvania Museum.
- Joukowsky, M. S. (1986). *Prehistoric Aphrodisias. An Account of the Excavations and Artifact Studies. Volume I: Excavations and Studies. Volume II: Bibliography, Catalogue, Appendix, Index*. Louvain-La-Neuve.
- Karaođlan, H. (2018). Seyitömer Höyüğü'nde Orta Tunç Çađı'na Tarihlendirilen Bir Grup Dokuma Tezgah Ađırlığı. *Dumlupınar Üniversitesi Sosyal Bilimler Dergisi*, (58), 15-30. <https://doi.org/10.30794/pausbed.546644>
- Kargiođlu, M., Serteser, A., Őenkul, Ç. & Özdemir, M. A. (2008). Akarçay Havzası (Afyonkarahisar)'ndaki Tehlike Altındaki (Cr, En, Vu) Endemik Bitkilerin Cođrafı Bilgi Sistemleri (Cbs) ile Haritalanması ve Koruma Statüleri. *Biyoloji Bilimleri Arařtırma Dergisi*, 1(2), 33-36. Eriřim adresi: <https://bibad.gen.tr/index.php/bibad/article/view/15>
- Koçak, Ö., Bilgin, M. & Küçükbezci, H. G. (2019). *MÖ II. Binyılda Afyonkarahisar ve Çevresi Kùltürleri*. Ankara: TTK Yayınları.
- Koçak, Ö., Baytak, İ. & Esen, Ö. (2021). Büyük Menderes Nehri Havzasının Dođusunda MÖ II. Bin Yıla ait Hilal Biçimli Tezgah Ađırlıkları (Bir Grup Piramidal Ađırlıkla Beraber)". *Belleten*, 85(304), 713-780. <https://doi.org/10.37879/belleten.2021.713>
- Korfmann, M. (1977/1978). Demircihüyük. Vorbericht Über Die Ergebnisse der Grabung von 1975. *Istanbul Mitteilungen*, Vol. 27/28, 5-31.
- Korfmann, M. (1983). *Demircihüyük. Die Ergebnisse der Ausgrabungen 1975-1978. Volume I. Architektur, Stratigraphie und Befunde*. Mainz: Verlag von Zabern.
- Koşay, H. Z., Akok, M. (1973). *Alaca Höyük Kazısı 1963-1967 Çalıřmaları ve Keřiflere ait İlk Rapor. Alaca Höyük Excavations Preliminary Report on Research and Discoveries 1963-1967*. Ankara: TTK Yayınları.
- Kull, B. (1988). *Die Mittelbronzezeitliche Siedlung, Mit Einem Anhang von H. Kammerer- Grothaus und A.- U. Kossatz zu Antiken Funden aus Demircihüyük, Die Ergebnisse der Ausgrabungen 1975-1978*, Herausgegeben von Manfred Korfmann, Band V, Mainz.
- Kuzay, M. & Tombul, M. (2020). Akarçay Havzası ve Van Gölü Havzası için 1901-2015 Yılları Arasında Standartlaştırılmıř Yađıř İndeksi'ne (SPI) Göre Trend Analizi, *BŐEÜ Fen Bilimleri Dergisi*, 7- Milli Mücadele ve TBMM'nin Açılıřının 100. Yılı Anısına-100. Yıl Özel Sayısı, 51-61. DOI: 10.35193/bseufbd.645316
- Lamb, W. (1936). Excavations at Kusura near Afyon Karahisar. *Archaeologia*, LXXXVI, 1-64, pl. 1-8.
- Lassen, A. W. (2013). Technology and Palace Economy in Middle Bronze Age Anatolia: the Case of the Crescent Shaped Loom Weight. In M.-L. Nosch, H. Koefoed, & E. Andersson Strand (Eds.), *Textile Production and Consumption in the Ancient Near East. Archaeology, Epigraphy, Iconography* (pp. 78-92). Oxford: Oxbow Books, 12.
- Lassen, A. W. (2015). Weaving with Crescent Shaped Loom Weights. An Investigation of a Special Kind of Loom Weight. In E. A. Strand & M.-L. Nosch (Eds.), *Tools, Textiles and Contexts, Investigating Textile Production in the Aegean and Eastern Mediterranean Bronze Age* (pp. 127-137), Oxford: Oxbow Books.
- Mellaart, J. & Murray, A. (1995). *Beycesultan, VOL. III, Part II*. Ankara: British Institute at Ankara.

- Michel, C. (2011). Asur ve Kaniş'in Kadınları, *Anadolu'nun Önsözü Kültepe Kaniş-Karumu: Asurlular İstanbul'da* (pp. 124-133), ed. F. Kulakoğlu & S. Kangal (Eds.), Kayseri Büyükşehir Kültür Yayınları No: 78.
- Oy, H. (2024). Bronze Age Settlement and Cemetery in the Ulubey Canyon in Inland Western Anatolia: Mehmet Bey Dere, Uşak, Turkey, *Andolu Araştırmaları/Anatolian Research*, 30, 67-92. <https://doi.org/10.26650/anar.2024.30.1283747>
- Sipahi, T. (2013-14). Hitit Çağında Boyalı Höyük ve Eskiyapar, *Çorum Kültür Sanat. Bilim, Kültür, Sanat, Tarih ve Turizm Dergisi, (Hitit Söyleşileri II Özel Sayısı)*, 4-22.
- Taş, B. & Yakar, M. (2010). Afyonkarahisar İlinde Yükselti Basamaklarına Göre Arazi Kullanımı. *Coğrafi Bilimler Dergisi*, 8(1), 57-76. https://doi.org/10.1501/Cogbil_0000000107
- Tütüncüler, Ö. (2005). *M.Ö. 2. Bin Ege Bölgesi Dokuma Aletleri*. (Doktora Tezi). Ankara Üniversitesi Sosyal Bilimler Enstitüsü, Ankara.
- Yılmaz, Ö. (2005). Afyonkarahisar İli Genel Coğrafya Özellikleri. *Afyonkarahisar Kütüğü, I*, Afyonkarahisar.
- Yılmaz, M. A. & Kalkan, E. (2021). Weaving Tools from the Uşak Protohistoric Survey Project (UPDAP). *CEDRUS*, IX, DOI: 10.13113/CEDRUS.202103

Inventory List

Figure 12:10; 8:8 Code: 313.21.16.52; Tüysüz I (Dinar- Haydarlı Town); Length, width, thickness: 7, 2.6, 2.4; H. Diameter: 0.4x0.5; 2.5YR 6/6 light red clay; Fine sandy, mica, grit, lime; 2.5YR 6/8 light red slip; Very faintly burnished; Medium baked; Crescent-shaped, quadrangular in cross-section, with rounded corners and angular tips. Broken and 1/2 of it is present. 64 gr.

Figure 13:10; 9:10 Code: 307.26.16.23; Alpaslan Höyük (Dinar- Alpaslan Village); Length, width, thickness: 5.2, 2.2, 2.2; H. Diameter: Broken; 5YR 7/6 reddish yellow clay; Fine sandy, mica, grit, lime; 5YR 6/4 light reddish brown slip; Faintly burnished; Medium badly; Crescent-shaped, quadrangular in cross section; no tip. Broken and 1/3 of it is present. 35 gr.

Figure 11:8; 8:6 Code: 307.26.16.34; Alpaslan Höyük (Dinar- Alpaslan Village); Length, width, thickness: 4.9, 2.2, 1.9; H. Diameter: 0.4x0.5; 5YR 7/6 reddish yellow clay; Fine sandy, mica, grit, lime; 7.5YR 5/4 brown slip; Faintly burnished; Medium baked; Crescent-shaped, quadrangular in cross section with a rounded tip. Broken and 1/3 of it is present. 30 gr.

Figure 13:23; 9:23 Code: 313.14.16.21; Akgün Tepe Höyük (Dinar- Akgün Village); Length, width, thickness: 8.2, 2.8, 2.4; H. Diameter: 0.4x0.5; 2.5Y 7/4 pale yellow clay; Fine sandy, mica, grit, lime; 2.5Y 7/3 pale yellow slip; Faintly burnished; Well baked; Crescent-shaped, quadrangular in cross-section, with rounded corners and a rounded tip. Broken and 1/2 of it is present. 64 gr.

Figure 12:21; 8:19 Code: 313.14.18.98; Akgün Tepe Höyük (Dinar- Akgün Village); Length, width, thickness: 10.7 (approx. 21.1), 4.3, 2.8; H. Diameter- D.B.H.: 0.5, 18; 10YR 8/4 very pale brown clay; Fine sandy, little mica, little grit, lime; 7.5YR 6/4 light brown slip; Faintly burnished; Medium baked; Crescent-shaped, quadrangular in cross-section and angular tips. Broken and 1/2 of it is present. 148 gr.

Figure 11:19; 7:18 Code: 313.14.18.144; Akgün Tepe Höyük (Dinar- Akgün Village); Length, width, thickness: 5.1, 2.7, 2.8; H. Diameter: 0.3x0.4; 10YR 8/4 very pale brown clay; Very well sifted sandy, little mica, little grit; 10YR 6/3 pale brown slip, with a thin watery undercoat was applied; Faintly burnished; Medium baked; Crescent-shaped, quadrangular in cross-section and angular tips. Broken and 1/3 of it is present. 45 gr.

Figure 11:12; 7:12 Code: 313.14.18.121; Akgün Tepe Höyük (Dinar- Akgün Village); Length, width, thickness: 5.5, 3.3, 1.8; H. Diameter: Broken; 10 YR 7/3 very pale brown clay; Fine sandy, mica, lime, grit; 10 YR 5/1 gray slip; Faintly burnished; Decoration: There is a wheel of fortune motif in a circular area 2.3 cm wide in the center. There is a 0.7 cm

wide and 0.4 cm deep hole on the right side of this motif; Medium baked; Crescent-shaped, quadrangular in cross-section, with rounded corners; no tip. Broken and 1/4 of it is present. 35 gr.

Figure 13:15; 9:15 Code: 308.19.16.20; İsmail Höyük (Dinar- Göçerli); Length, width, thickness: 8.4, 3.7, 2.8; H. Diameter: Broken; 2.5YR 6/8 light red clay; Fine sandy, mica, grit; 5YR 7/6 reddish yellow slip; Faintly burnished; Medium baked; Crescent-shaped, quadrangular in cross-section with rounded corners; no tip. Broken and 1/3 of it is present. 139 gr.

Figure 13:16; 9:16 Code: 308.19.16.23; İsmail Höyük (Dinar- Göçerli); Length, width, thickness: 6.8, 3.1, 2.6; H. Diameter: 0.3x0.4; 2.5YR 7/8 light red clay; Fine sandy, mica, grit; 10R 6/8 light red slip; Faintly burnished; Well baked; V-shaped, quadrangular in cross-section, with rounded corners and angular tips. There are fractures at the tip. Broken and 1/2 of it is present. 75 gr.

Figure 12:16; 8:14 Code: 308.19.16.12; İsmail Höyük (Dinar- Göçerli); Length, width, thickness: 5.6, 3, 2.4; H. Diameter: 0.4x0.6, 5R 8/1 white clay; Fine sandy, mica, lime; 5YR 6/8 reddish yellow slip; Unburnished; Well baked; Crescent-shaped, quadrangular in section, with rounded corners and a rounded tip. Broken and 1/3 of it is present. 59 gr.

Figure 13:18; 9:18 Code: 313.18.16.06; Kerim Çayırı (Dinar- Cumhuriyet Village); Length, width, thickness: 9.6 (approx. 17.1), 3.3, 2.6; H. Diameter- D.B.H.: 0.7x0.8, 16.5; 2.5YR 7/8 light red clay; Fine sandy, mica, abundant lime; 5YR 7/6 reddish yellow slip; Unburnished; Medium baked; Crescent-shaped, quadrangular in cross-section, with rounded corners and angular tips. Broken and 1/2 of it is present. 162 gr.

Figure 11:16; 7:16 Code: 313.18.16.59; Kerim Çayırı (Dinar- Cumhuriyet Village); Length, width, thickness: 5.9, 2.1, 2; H. Diameter: Broken; 5YR 7/8 reddish yellow clay; Fine sandy, mica; 5YR 7/6 reddish yellow slip; Well baked; Unburnished; Decoration: There are 3 holes 0.3 cm wide and 0.4 cm deep on the upper part. None; Crescent-shaped, quadrangular in cross section; no tip. Broken and 1/3 of it is present. 46 gr.

Figure 11:5; 7:5 Code: 313.18.16.31; Kerim Çayırı (Dinar- Cumhuriyet Village); Length, width, thickness: 10.5 (approx. 17.2), 2.4, 1.9; H. Diameter- D.B.H.: 0.5, 17; 5YR 6/8 reddish yellow clay; Fine sandy, mica, grit, lime; 5YR 7/6 reddish yellow slip; Faintly burnished; Medium baked; Crescent-shaped, quadrangular in cross-section, with rounded corners and a rounded tip. Broken and 1/2 of it is present. 66 gr.

Figure 11:7; 7:7 Code: 310.10; Köyiçi Mevkii (Hocalar- Örencik Village); Length, width, thickness: 4, 2.4, 2.2; H. Diameter: Broken; 7.5YR 7/6 reddish yellow clay; Fine

sandy, mica, grit, lime; 7.5YR 6/4 light brown slip; Burnished; Badly baked; Decoration: There is a 0.4 cm wide, 0.2 cm deep hole in the center of the existing piece; Crescent-shaped, quadrangular in cross-section, no tip. Broken and 1/4 of it is present. 47 gr.

Figure 11:11; 7:11 Code: 304.32.07.130; Tezköy (Emirdağ- Tezköy Village) Length, width, thickness: 6.7, 2.9, 3.2; H. Diameter: Broken; 5YR 5/3 reddish brown clay; Fine sandy, mica, grit, lime; 7.5YR 5/4 brown; Unburnished; Badly baked; Crescent-shaped, quadrangular in cross-section, with rounded edges; no tip. Broken and 1/2 of it is present. 80 gr.

Figure 12:2 Code: 304.27.07.130; Akçaşar Höyük (Emirdağ- Bademli Town); Length, width, thickness: 7, 3.8, 2.9; H. Diameter: Broken; 2.5YR 5/8 red clay; Fine sandy, mica, grit, lime, plant; 5YR 6/6 reddish yellow slip; Faintly burnished; Medium baked; Crescent-shaped, quadrangular in cross-section; no tip. 1/2 of it is present.

Figure 14:11; 10:11 Code: 301.09.02.23; Yörükkaracaören (Bolvadin- Yörükkaracaören Village); Length, width, thickness: 4.3 (approx. 7.5), 2.9, 2.1; H. Diameter- D.B.H.: 0.3x0.6, 4.9; 2.5YR 7/3 pale yellow clay; Fine sandy, mica, grit, plenty of lime; 2.5YR 6/3 light yellowish brown slip; Unburnished; Medium baked; Decoration: There is a 0.3 cm wide hole in the center; U-shaped, elliptical in cross section with a rounded tip. The inside of the loom weight is flattened. Broken and 1/2 of it is present. 40 gr.

Figure 12:22; 8:20 Code: Üçh.22.YB.66; Üçhöyük (Bolvadin District); Length, width, thickness: 5.5, 3.9, 2; H. Diameter: 0.6x0.9; 2.5YR 6/6 light red clay; Fine sandy, mica, grit; 2.5YR 6/4 light reddish brown slip; Unburnished; Medium baked; Crescent-shaped, elliptical in cross section with a rounded tip. Broken and 1/3 of it is present. 47 gr.

Figure 12:5; 8:3 Code: Üçh.22.YB.81; Üçhöyük (Bolvadin District); Length, width, thickness: 4.8, 2.9, 2.4; H. Diameter: 0.6; 5YR 7/6 reddish yellow clay; Fine sandy, little mica, little grit, lime; 2.5YR 5/4 reddish brown slip; Burnished; Medium baked; Crescent-shaped, oval in cross section with a rounded tip. Broken and 1/4 of it is present. 28 gr. There are fractures on the back of the existing piece.

Figure 13:6; 9:6 Code: Üçh.22.YB.61; Üçhöyük (Bolvadin District); Length, width, thickness: 4.1, 3.5, 2; H. Diameter: 0.4x0.6; 7.5YR 7/4 pink clay; Fine sandy, mica, little grit, lime; 7.5YR 6/3 light brown slip; Faintly burnished; Well baked; Crescent-shaped, elliptical in cross section with a rounded tip. Broken and 1/5 of it is present. 27 gr.

Figure 14:8; 10:8 Code: Üçh.22.YB.62; Üçhöyük (Bolvadin District); Length, width, thickness: 7 (approx. 12); 4.1, 2.5, H. Diameter- D.B.H.: 0.6x0.7, 8.5; 5YR 8/4 pink clay; Fine sandy, abundant mica, grit, plant; 2.5YR 6/6 light red slip; Unburnished; Medium baked;

Decoration: There is a complete hole measuring 0.6x0.7 cm in the center; U-shaped, elliptical in cross section with a rounded tip. Broken and 1/2 of it is present. 94 gr.

Figure 14:7; 10:7 Code: Üçh.22.YB.77; Üçhöyük (Bolvadin District); Length, width, thickness: 5.2, 3.6, 1.9; H. Diameter: 0.5x1; 10R 5/3 weak red clay; Fine sandy, little mica, lime; 10R 5/6 red slip; Faintly burnished; Medium baked; Crescent-shaped, elliptical in cross section, with sharp corners and rounded tips. Broken and 1/3 of it is present. 51 gr.

Figure 13:25; 9:25 Code: Üçh.22.YB.149; Üçhöyük (Bolvadin District); Length, width, thickness: 7.7, 3.5, 3.1; H. Diameter: 0.5x0.7; 10R 6/4 pale red clay; Fine sandy, mica, grit, abundant lime; 10YR 5/4 weak red slip; Very faintly burnished; Medium baked; V-shaped, oval in cross section with a rounded tip. Broken and 1/2 of it is present. 103 gr. The flattening marks on the broken part indicate that it was used for the second time. There are fractures on the front face.

Figure 11:21, 7:20 Code: Üçh.21.YB.01; Üçhöyük (Bolvadin District); Length, width, thickness: 4.2, 2.5, 1.5; H. Diameter: 0.3x0.4; 10R 6/6 light red clay; Fine sandy, mica, grit, lime; 10R 6/8 light red slip; Faintly burnished; Well baked; Crescent-shaped, quadrangular with rounded corners and rounded tips. Broken and 1/3 of it is present. 19 gr.

Figure 12:25; 8:23 Code: Üçh.21.YB.02; Üçhöyük (Bolvadin District); Length, width, thickness: 8.7 (approx. 18), 3.1, 2; H. Diameter- D.B.H.: 0.6x0.8, 15.1; 5YR 7/6 reddish yellow clay; Fine sandy, mica, grit, lime; 5YR 7/6 reddish yellow slip; Unburnished; Badly baked; Crescent-shaped, elliptical in cross section with a rounded tip. Broken and 1/2 of it is present. 63 gr.

Figure 11:24; 7:23 Code: Üçh.21.YB.03; Üçhöyük (Bolvadin District); Length, width, thickness: 6.1, 3.4, 2; H. Diameter: 0.5x0.9; 2.5YR 7/8 light red clay; Fine sandy, mica, little grit, lime; 10R 6/8 light red slip; Unburnished; Well baked; Crescent-shaped, elliptical in cross section with a rounded tip. Broken and 1/3 of it is present. 43 gr.

Figure 13:13; 9:13 Code: Üçh.21.YB.04; Üçhöyük (Bolvadin District); Length, width, thickness: 6.5, 2.7, 2.3; H. Diameter: 0.5; 5YR 6/4 light reddish brown clay; Fine sandy, mica, grit; 5YR 5/3 reddish brown slip; Faintly burnished; Medium baked; Crescent-shaped, quadrangular in cross-section, with rounded corners and angular tips. Broken and 1/2 of it is present. 53gr

Figure 14:1; 10:1 Code: Üçh.21.YB.05; Üçhöyük (Bolvadin District); Length, width, thickness: 6.8 (approx. 13), 3.3, 2.2; H. Diameter- D.B.H.: 0.4x0.6, 9.1; 7.5YR 8/4 pink clay; Fine sandy, little mica, grit, lime, plant; 5YR 7/6 reddish yellow slip; Faintly burnished; Medium baked; Crescent-shaped, elliptical in cross section with a rounded tip. Broken and 1/2 of it is present. 71 gr. The flattening marks on the broken part indicate that it was used for the second time.

Figure 13:4; 9:4 Code: Üçh.21.YB.06; Üçhöyük (Bolvadin District); Length, width, thickness: 7.1, 3.2, 1.9; H. Diameter: 0.5x0.7; 2.5YR 7/6 pink clay; Fine sandy, mica, lime, grit; 10R 6/6 light red slip; Unburnished; Well baked; Crescent-shaped, quadrangular in section, with rounded corners and a rounded tip. Broken and 1/3 of it is present. 48 gr. There are fractures on the back of the existing piece.

Figure 14:12; 10:12 Code: Üçh.21.YB.07; Üçhöyük (Bolvadin District); Length, width, thickness: 4.5 (approx. 10.2), 3.9, 2; H. Diameter- D.B.H.: 0.8x1, 8.9; 2.5YR 7/6 light red clay; Fine sandy, abundant mica, grit; 2.5YR 7/6 light red slip; Unburnished; Medium baked; V shaped, elliptical in cross section with a rounded tip. Broken and 1/2 of it is present. 73 gr.

Figure 12:11; 8:9 Code: Üçh.21.YB.08; Üçhöyük (Bolvadin District); Length, width, thickness: 6.3, 3.6, 1.9; H. Diameter: 0.7x0.9; 2.5YR 7/6 light red clay; Fine sandy, mica, grit, lime, plant; 2.5YR 7/6 light red slip; Unburnished; Medium baked; Crescent-shaped, elliptical in cross section with a rounded tip. Broken and 1/3 of it is present. 47gr. There are fractures on the back and front of the existing piece.

Figure 13:2; 9:2 Code: Üçh.21.YB.09; Üçhöyük (Bolvadin District); Length, width, thickness: 5.5, 4.2, 1.6; H. Diameter: 0.7x1.1; 10R 6/8 light red clay; Fine sandy, mica, grit, little lime; 10R 7/6 light red slip; Unburnished; Well baked; Crescent-shaped, quadrangular in section, with rounded corners and a rounded tip. Broken and 1/4 of it is present. 47 gr.

Figure 12:13; 8:11 Code: Üçh.21.YB.10; Üçhöyük (Bolvadin District); Length, width, thickness: 5.4, 4.4, 2.2; H. Diameter: 0.7x0.9; 5YR 7/3 pink clay; Fine sandy, mica, grit, lime; 5YR 5/3 reddish brown slip; Unburnished; Medium baked; Crescent-shaped, quadrangular in cross section, rounded corners, a rounded tip. Broken and 1/4 of it is present. 64 gr. The lower part of the loom weight is shaped like a fish's back.

Figure 14:18; 10:18 Code: Üçh.21.A.L1.54; Üçhöyük (Bolvadin District); Length, width, thickness: 8, 3.1x4.2, 1.4x2; H. Diameter-D.B.H.: 0.3x0.7, 4.9; 7.5YR 5/4 pink clay; Fine sandy, mica, grit (coarse grit), lime, plant; Grey 1 2.5 N black slip; Badly baked; U-shaped, irregularly elliptical in cross section with a rounded tip. Intact. 84 gr. The front side of the loom weight is rounded and the back side is partially flattened.

Figure 13:5; 9:5 Code: 318.11.20.27; Alanlı Höyük (İhsaniye- Döğer Town); Length, width, thickness: 5.6 (approx. 11.5) 3; 2.8; H. Diameter- D.B.H.: 0.6x0.7, 9.7; 2.5YR 6/6 light red clay; Fine sandy, mica, grit; 2.5YR 6/8 light red slip; Unburnished; Medium baked; Crescent-shaped, oval in cross section with a rounded tip. There are fractures on the exterior of the existing fragment. Broken and 1/2 of it is present. 55 gr.

Figure 14:6; 10:6 Code: 318.03.18.104; Yukarıtandır Höyük (İhsaniye- Yukarıtandır Village); Length, width, thickness: 4.9, 2, 3.2; H. Diameter: 0.6x0.7; 10YR 8/2 very pale yellow clay; Fine sandy, mica, grit, lime, plant; 2.5YR 4/1 dark gray slip; Burnished; Badly baked; U-shaped, irregular elliptical section with a rounded tip. Broken and 1/2 of it is present. 39 gr.

Figure 12:18; 8:16 Code: 318.03.18; Yukarıtandır Höyük (İhsaniye- Yukarıtandır Village); Length, width, thickness: 5.7, 3, 2.7; H. Diameter: 0.2x0.5; 7.5YR 7/4 pink clay; Fine sandy, mica, grit; 10YR 7/4 very pale brown slip; Very faintly burnished; Medium baked; Crescent-shaped, oval in cross-section, with a rounded tip. There are fractures at the tip of the existing piece. The hole was closed later. Broken and 1/2 of it is present. 60 gr.

Figure 11:20; 7:19 Code: 318.12.20.123; Next to Manastır Çeşme (İhsaniye- Alanlı Neighbourhood); Length, width, thickness: 4.3, 5.5, 2.7; H. Diameter: 0.8x1; 10YR 7/3 very pale brown clay; Fine sandy, mica, grit, lime, plant; 5YR 6/6 reddish yellow slip; Unburnished; Badly baked; Crescent-shaped, elliptical in cross section with a rounded tip. Broken and 1/4 of it is present. 59 gr.

Figure 14:13; 10:13 Code: 318.02.18.67; Ablak Höyük (İhsaniye- Ablak Village); Length, width, thickness: 6.2 (approx. 11.3), 4.2, 2.5; H. Diameter- D.B.H.: 0.5x0.8, 7.9; 2.5YR 7/6 light red clay; Fine sandy, mica, grit, lime, plant; 5YR 6/6 reddish yellow slip; Unburnished; Decoration: Four parallel long notches on the dorsal side; Badly baked; V-shaped, elliptical in cross section with a rounded tip. Broken and 1/2 of it is present. 84 gr.

Figure 12:24; 8:22 Code: 318.02.18.30; Ablak Höyük (İhsaniye- Ablak Village); Length, width, thickness: 5.7, 3.2, 2.8; H. Diameter: 0.5x0.7; 2.5YR 8/3 pale yellow clay; Fine sandy, mica, grit; 2.5YR 8/3 pale yellow slip; Faintly burnished; Decoration: Two parallel rows of notched decoration on the upper part just below the hole; Badly baked; Crescent-shaped, quadrangular in cross-section, with rounded corners and a rounded tip. Broken and 1/2 of it is present. 78 gr.

Figure 12:20; 8:18 Code: 318.02.19.263; Ablak Höyük (İhsaniye- Ablak Village); Length, width, thickness: 5, 2.1, 2; H. Diameter: 0.4x0.7; 2.5Y 7/3 pale yellow clay; Fine sandy, mica, grit, lime; 2.5Y 7/3 pale yellow; Burnished; Well baked; Irregular quadrangular section with angular tips. Broken and 1/3 of it is present. 34 gr.

Figure 12:28; 8:26 Code: 318.02.19.208; Ablak Höyük (İhsaniye- Ablak Village); Length, width, thickness: 3.3, 2.9, 1.6; H. Diameter: 0.8x; 7.5YR 6/4 light brown clay; Fine sandy, mica, grit, lime; 7.5YR 6/4 light brown slip; Unburnished; Well baked; Crescent-shaped, with slip section and a rounded tip. Broken and 1/5 of it is present. 16 gr.

Figure 12:27; 8:25 Code: 318.02.19.265; Ablak Höyük (İhsaniye- Ablak Village); Length, width, thickness: 4.3, 3.4, 2.1; H. Diameter: 0.5x0.7; 2.5R 6/1 gray clay; Fine sandy, mica, grit, abundant lime; 2.5YR 6/4 light reddish brown slip; Faintly burnished; Badly baked; Crescent-shaped, elliptical in cross section with a rounded tip. Broken and 1/5 of it is present. 27 gr.

Figure 12:23; 8:21 Code: 318.02.19.204; Ablak Höyük (İhsaniye- Ablak Village); Length, width, thickness: 4.8, 3.3, 2; H. Diameter: 0.5x0.6; 10YR 6/2 light brownish gray clay; Fine sandy, mica, grit, lime; 10YR 6/3 pale brown slip; Faintly burnished; Decoration: There are two rows of vertical notch decoration on the top, just below the hole; Badly baked; Crescent-shaped, elliptical in cross section with a rounded tip. Broken and 1/4 of it is present. 42 gr.

Figure 12:6; 8:4 Code: 318.02.19.343; Ablak Höyük (İhsaniye- Ablak Village); Length, width, thickness: 6.2, 4.1, 2.5; H. Diameter: Broken; 2.5Y 8/3 pale yellow clay; Fine sandy, mica, grit; 2.5Y 7/3 pale yellow slip; Unburnished; Well baked; Crescent-shaped, quadrangular in cross-section, with rounded corners; no tip. The interior is flattened. Broken and 1/2 of it is present. 77 gr. The edges of the existing piece were smoothed and used for the second time.

Figure 13:19; 9:19 Code: 318.02.19.178; Ablak Höyük (İhsaniye- Ablak Village); Length, width, thickness: 8, 2.6, 2.4; H. Diameter: Broken; 2.5YR 7/6 light red clay; Fine sandy, mica, grit, lime; 2.5YR 7/6 light red slip; Faintly burnished; Decoration: There are four vertical rows of nail imprint decoration on the upper part. There is a 0.4 cm wide and 0.9 cm deep hole at the tip; Medium baked; Crescent-shaped, irregular quadrangular section, rounded corners, no tip. Broken and 1/2 of it is present. 63 gr.

Figure 11:1; 7:1 Code: 318.08.20.12; Çiftlik (İhsaniye- Karacaahmet Village); Length, width, thickness: 16.9, 3.1, 3.1; H. Diameter: 0.5x0.8; 14; 5 YR 6/6 reddish yellow clay; Fine sandy, mica, grit, lime, plant; 5 YR 6/1 gray slip; Faintly burnished; Badly baked; Crescent-shaped, quadrangular in cross-section with angular tips. Intact. 64 gr.

Figure 13:26; 9:26 Code: 307.03.20.161; Çalışlar Höyük (İscehisar- Çalışlar Village); Length, width, thickness: 6.6, 3.1, 2.3; H. Diameter: Broken; 2.5YR 6/6 light red clay; Fine sandy, mica, grit, lime; 2.5YR 5/4 reddish brown slip; Burnished; Well baked; Crescent-shaped, quadrangular in cross-section, with rounded corners; no tip. Broken and 1/2 of it is present. 72 gr.

Figure: 12:12; 8:10 Code: 307.03.20.158; Çalışlar Höyük (İscehisar- Çalışlar Village); Length, width, thickness: 4, 3.6, 1.8; H. Diameter: 0.9; 2.5YR7/8 light red clay; Fine sandy, mica, grit, lime; 2.5YR 6/6 light red slip; Faintly burnished; Well baked; Crescent-shaped, elliptical in cross section with a rounded tip. Broken and 1/5 of it is present. 33 gr.

Figure 12:15; 8:13 Code: 311.22.18.20; Pınarbaşı Höyük (Şuhut- Kılıçkaya Village); Length, width, thickness: 6.3, 2.3, 2.2; H. Diameter: 0.5x0.7; 10R 6/6 pale red clay; Fine sandy, mica, grit, lime; 2.5YR 6/6 light red slip; Faintly burnished; Well baked; Crescent-shaped, quadrangular in section, with rounded corners and angular tips. Broken and 1/2 of it is present. 44 gr.

Figure 11:8; 7:8 Code: 311.06.11.95; Mahmut Höyük (Şuhut- Mahmut Village); Length, width, thickness: 7.2, 3.5, 2.2; H. Diameter: Broken; 5YR 7/6 reddish yellow clay; Fine sandy, mica, grit, lime; 5YR 7/6 reddish yellow slip; Faintly burnished; Medium baked; Crescent-shaped, elliptical in cross-section; no tip. The upper part is flattened. Broken and 1/3 of it is present. 76 gr.

Figure 11:2; 7:2 Code: 311.06.11.125; Mahmut Höyük (Şuhut- Mahmut Village); Length, width, thickness: 5.7, 1.8, 1.6; H. Diameter: Broken; 2.5YR 7/8 light red clay; Fine sandy, grit, lime, few plants; 5YR 7/6 reddish yellow slip; Burnished; Decoration: There are three holes 0.4 cm thick and deep in the middle part of the piece; Well baked; Crescent-shaped, quadrangular in cross-section; no tip. Broken and 1/3 of it is present. 24 gr.

Figure 13:20; 9:20 Code: 311.06.11.05; Mahmut Höyük (Şuhut- Mahmut Village); Length, width, thickness: 7.5, 2.6, 1.5; H. Diameter: Broken; 10YR 7/6 reddish yellow clay; Fine sandy, mica, grit slip; 2.5YR 6/6 pale red slip; Burnished; Well baked; Crescent-shaped, quadrangular in cross-section, with rounded corners; no tip. Broken and 1/2 of it is present. 44 gr.

Figure: 13:30; 9:30 Code: 311.06.11.88; Mahmut Höyük (Şuhut- Mahmut Village); Length, width, thickness: 5.5, 2.4, 2.4; H. Diameter: Broken; 2.5YR 7/4 light reddish brown clay; Fine sandy, abundant mica, grit, lime; 2.5YR 5/4 reddish brown slip; Faintly burnished; Badly baked; Crescent-shaped, quadrangular in cross-section; no tip. Broken and 1/3 of it is present. 50 gr.

Figure 11:9; 7:9 Code: 311.06.11.150; Mahmut Höyük (Şuhut- Mahmut Village); Length, width, thickness: 6.9 (approx. 14.5), 1.8, 1.9; H. Diameter- D.A.M.: 0.4x0.5, 12.5; 2.5YR 7/4 light reddish brown clay; Fine sandy, mica, grit, little lime; 2.5YR 6/4 light reddish brown slip; Faintly burnished; Decoration: There is a 0.4 cm wide, 1.3 cm deep hole broken in the middle part; Well baked; Crescent-shaped, quadrangular in cross-section and angular tips. Broken and 1/2 of it is present. 35 gr.

Figure 11:6; 7:6 Code: 311.26.12.30; Mahmut Höyük (Şuhut- Mahmut Village); Length, width, thickness: 3.7, 2.2, 2.1; H. Diameter: Broken; 5Y 8/1 white clay; Fine sandy, little mica, grit, lime; 2.5YR 5/4 reddish brown slip; Burnished; Well baked; Crescent-shaped, irregular quadrangular section with rounded edges; no tip. Broken and 1/4 of it is present. 28 gr.

Figure 13:7; 9:7 Code: 308.20.09.158; Mahmut Höyük (Şuhut- Mahmut Village); Length, width, thickness: 3.5, 2.4, 1.7; H. Diameter: 0.4x0.6; 5YR 7/8 reddish yellow clay; Fine sandy, mica, grit, lime; 5YR 7/8 reddish yellow slip; Unburnished; Crescent-shaped, elliptical in cross section with a rounded tip. Broken and 1/5 of it is present. 18 gr.

Figure 13:3; 9:3 Code: 311.06.11.149; Mahmut Höyük (Şuhut- Mahmut Village); Length, width, thickness: 3.5, 2.2, 2.3; H. Diameter: 0.2x0.4; 5YR 7/6 reddish yellow clay; Fine sandy, mica, grit, lime; 10R 6/8 light red slip; Unburnished; Medium baked; Crescent-shaped, quadrangular in section, with rounded corners and a rounded tip. Broken and 1/4 of it is present. 24 gr.

Figure 13:27; 9:27 Code: 311.06.11.121; Mahmut Höyük (Şuhut- Mahmut Village); Length, width, thickness: 8.1, 2.5, 2.4; H. Diameter: 0.5; 5YR 7/6 reddish yellow clay; Fine sandy, mica, grit, lime; 2.5YR 6/6 light red slip; Faintly burnished; Medium baked; V-shaped, quadrangular in cross section with a rounded tip. Broken and 1/2 of it is present. 74 gr.

Figure 13:14; 9:14 Code: 311.26.12.20; Hasanlı Höyük (Şuhut- Karaadilli Village); Length, width, thickness: 14 (approx. 15.1), 2.7, 2; H. Diameter- D.A.M.: 0.6x0.7, 12.2; 2.5YR 5/8 red clay; Fine sandy, little mica, grit; 7.5YR 4/3 brown slip; Faintly burnished; Well baked; Crescent-shaped, quadrangular in cross section with a rounded tip. Broken and 4/5 of it is present. 133 gr.

Figure 12:14; 8:12 Code: 311.26.72.53; Hasanlı Höyük (Şuhut- Karaadilli Village); Length, width, thickness: 6.5, 2.1, 2; H. Diameter: 0.4; 5YR 4/3 reddish brown clay; Fine sandy, little mica; 7.5YR 4/2 brown slip; Burnished; Medium baked; Crescent-shaped, quadrangular in cross section with angular tips. Broken and 1/2 of it is present. 49 gr.

Figure: 11:4; 7:4 Code: 311.26.12.27; Hasanlı Höyük (Şuhut- Karaadilli Village); Length, width, thickness: 7.2, 2.7, 1.9; H. Diameter: Broken; 5YR 8/1 white clay; Fine sandy, mica, grit, lime; 5YR 4/6 red slip; Brightly burnished; Well baked; Decoration: There are three rosette-shaped circular imprinted decorations side by side on the upper part; Crescent-shaped, quadrangular in cross section; no tip. Broken and 1/3 of it is present. 58 gr.

Figure 13:9; 9:9 Code: 311.26.12.54; Hasanlı Höyük (Şuhut- Karaadilli Village); Length, width, thickness: 5.5, 2.5, 2.3; H. Diameter: Broken; 5YR 7/6 reddish yellow clay; Fine sandy, mica, grit, lime; 7.5YR 5/4 brown slip; Faintly burnished; Medium baked; Crescent-shaped, quadrangular in cross-section; no tip. Broken and 1/4 of it is present. 50 gr.

Figure 13:24; 9:24 Code: 311.26.12.43; Hasanlı Höyük (Şuhut- Karaadilli Village); Length, width, thickness: 7, 2.8, 2.5; H. Diameter: 0.4; 5YR 7/6 reddish yellow clay; Medium sandy, mica, abundant grit; 10R 4/4 weak red slip; Burnished; Medium baked; Crescent-shaped, quadrangular in cross section with a rounded tip. Broken and 1/2 of it is present. 81 gr.

Figure 11:3; 7:3 Code: 311.31.12.181; Anayurt Mevkii (Şuhut- Anayurt Village); Length, width, thickness: 6, 1.9, 1.8; H. Diameter: Broken; 2.5YR 6/6 light red clay; Fine sandy, mica, lime; 5Y 6/4 reddish brown slip; Burnished; Well baked; Decoration: There are two 0.4 cm wide and 0.2 cm deep holes side by side on the upper part; Crescent-shaped, quadrangular in cross-section; no tip. Broken and 1/3 of it is present. 26 gr.

Figure 11:14; 7:14 Code: 309.12.10.26; Örenkaya Üyükaltı (Sandıklı- Örenkaya Village); Length, width, thickness: 8.5, 3, 2; H. Diameter: Broken; 2.5YR 6/6 light red clay; Fine sandy, little mica, little grit; 2.5YR 3/2 dusky red slip; Burnished; Medium baked; Decoration: There is a 0.5 cm wide and 0.8 cm deep hole in the middle of the existing piece; Crescent-shaped, quadrangular in cross-section; no tip. Broken and 1/2 of it is present. 77 gr.

Figure 11:23; 7:22 Code: 309.12.18.142; Örenkaya Üyükaltı (Sandıklı- Örenkaya Town); Length, width, thickness: 5, 2.8, 2.9; H. Diameter: 0.5x0.6; 2.5YR 5/6 red clay; Fine sandy, mica, grit, lime; 2.5YR 5/6 red slip; Faintly burnished; Well baked; Crescent-shaped, irregular quadrangular section with rounded corners and a rounded tip. There are fractures on the tip and inside. Broken and 1/4 of it is present. 46 gr.

Figure 4:17; 10:17 Code: 309.12.18.113; Örenkaya Üyükaltı (Sandıklı- Örenkaya Town); Length, width, thickness: 10 (approx. 13.4), 3, 3.4; H. Diameter- D.B.H.: 0.7; 10; 2.5YR 7/8 light red clay; Fine sandy, mica, grit, lime; 2.5YR 6/8 light red slip; Faintly burnished; Medium baked; V-shaped, oval in cross section with a rounded tip. Broken and 3/4 of it is present. 179 gr.

Figure 12:9; 8:7 Code: 309.12.18.146; Örenkaya Üyükaltı (Sandıklı- Örenkaya Town); Length, width, thickness: 7.7, 2.5, 2; H. Diameter: 0.3x0.4; 2.5YR 6/6 light red clay; Fine sandy, mica, grit, lime; 2.5YR 5/6 red slip; Faintly burnished; Medium baked; V-shaped, quadrangular in cross-section, with rounded corners and angular tips. Broken and 1/2 of it is present. 59 gr.

Figure 13:17; 9:17 Code: 309.12.18.139; Örenkaya Üyükaltı (Sandıklı- Örenkaya Town); Length, width, thickness: 7.7, 3.1, 3; H. Diameter: 0.4x0.6; 2.5YR 6/8 light red clay; Fine sandy, mica, grit, lime; 2.5YR 5/6 red slip; Burnished; Medium baked; V-shaped, quadrangular in cross-section with angular tips. Broken and 1/2 of it is present. 116 gr.

Figure 13:12; 9:12 Code: 309.13.18.115; Menteş Höyük (Sandıklı- Menteş Village); Length, width, thickness: 6, 2.5, 1.8; H. Diameter: 0.3x0.5; 2.5YR 6/6 light red clay; Fine sandy, mica, grit; 5YR 6/6 reddish yellowish slip; Burnished; Medium baked; Crescent-shaped, quadrangular in section, with rounded corners and angular tips. Broken and 1/2 of it is present. 42 gr.

Figure 11:17; 7:17 Code: 309.13.18.160; Menteş Höyük (Sandıklı- Menteş Village); Length, width, thickness: 14.3 (approx. 15.9), 3.6, 3.3; H. Diameter- D.B.H.: 0.5x0.6; 12.5; 10R 5/6 red clay; Fine sandy, mica, grit, lime, plant; 5YR 6/6 reddish yellowish slip; Burnished; Medium baked; Decoration: There is a 0.5 cm wide and 0.5 cm deep hole in the middle of the existing piece; Crescent-shaped, quadrangular in cross-section, with rounded corners and pointed tips. Broken, 4/5 of it present. 221 gr.

Figure 13:22; 9:22 Code: 309.13.10.04; Menteş Höyük (Sandıklı- Menteş Village); Length, width, thickness: 17.1, 2.9, 2.8; H. Diameter- D.B.H.: 0.5, 14.9; 5YR 6/8 reddish yellow clay; Medium sandy, mica, grit, lime, plant; 2.5YR 6/8 light red slip; Unburnished; Badly baked; Decoration: Sun (ray) shaped-notched decorations on both sides on the upper part, a single sun-shaped printed cloth in the middle; Crescent-shaped, quadrangular in cross-section, with angular tips. Intact.

Figure 14:4; 10:4 Code: 306.08.05.05.131; Ahaların Çeşme (Bayat District); Length, width, thickness: 6.6, 3.5, 2.8; H. Diameter: 0.5x0.8; 10YR 7/4 very pale brown clay; Fine sandy, abundant mica, coarse grit, lime; 7.5YR 5/4 brown slip; Unburnished; Badly baked; Crescent-shaped, oval in cross section with a rounded tip. The inner part is flattened. Broken and 1/2 of it is present. 102 gr.

Figure 13:1; 9:1 Code: 306.08.05.05.128; Ahaların Çeşme (Bayat District); Length, width, thickness: 8.8 (approx. 18.2), 4.3, 3.7, H. Diameter- D.B.H.: 0.6x0.8; 13; 2.5YR 5/6 red clay; Fine sandy, mica, grit, lime; 2.5YR 6/4 light reddish brown slip; Unburnished; Medium baked; Crescent-shaped, oval in cross section with a rounded tip. The inner part is flattened. Broken and 1/2 of it is present. 187 gr.

Figure 14:3; 10:3 Code: 306.08.05.05.129; Ahaların Çeşme (Bayat District); Length, width, thickness: 6.5, 3.9, 2.2; H. Diameter: 0.3x0.8; 2.5YR 5/4 reddish brown clay; Fine sandy, mica, grit, lime; 10R 6/2 light brownish gray slip; Unburnished; Medium baked; Crescent-shaped, elliptical in cross-section; pointed tips. Broken and 1/3 of it is present. 74 gr. The front part of the existing piece is completely broken.

Figure 12:26; 8:24 Code: 306.08.05.130; Ahaların Çeşme (Bayat District); Length, width, thickness: 5.7, 4.9, 3.4; H. Diameter: 0.5x0.8; 2.5YR 7/6 light red clay; Fine sandy, mica, grit, lime; 7.5YR 7/4 pink slip; Very faintly burnished; Medium baked; Crescent-shaped, quadrangular in cross-section, with rounded corners and angular tips. Broken and 1/4 of it is present. 97 gr.

Figure 11:15; 7:15 Code: 306.08.05.05.127; Ahaların Çeşme (Bayat District); Length, width, thickness: 7.6, 4.1, 2.7; H. Diameter: 0.5x0.6; 2.5YR 6/6 light red clay; Fine sandy, abundant mica, grit, lime, plant; 7.5YR 7/4 pink slip; Very faintly burnished; Badly baked;

Crescent-shaped, quadrangular in section, with rounded corners and a rounded tip. Broken and 1/2 of it is present. 119 gr.

Figure 11:18; -; Code: 306.04.05.470; Asarcık Höyük (Bayat District); Length, width, thickness: 5.4, 2.9, 1.5; H. Diameter: 0.5; 7.5YR 5/4 brown clay; Fine sandy, mica, little lime; 7.5YR 4/3 brown slip; Faintly burnished; Well baked; Crescent-shaped, quadrangular in cross section, with rounded corners and a rounded tip. Broken and 1/3 of it is present.

Figure 12:4; -; Code: 306.01.06.365; Köy Kalesi (Bayat- Yukarı Çaybelen); Length, width, thickness: 5, 2.6, 3.4; H. Diameter: 0.6; 5YR 4/4 Reddish brown clay; Fine sandy, abundant mica, grit, lime; 2.5YR 4/2 weak red slip; Unburnished; Badly baked; Crescent-shaped, quadrangular in cross section, with rounded corners and a rounded tip. Broken and 1/4 of it is present.

Figure: 12:3; 8:2 Code: 308.15.08.151; Kınık Höyük (Sinanpaşa- Kınık Village); Length, width, thickness: 4.1, 2.1, 2; H. Diameter: 0.5x0.6; 10YR 6/4 light yellowish brown clay; Fine sandy, mica, grit, lime, plant; 2.5YR 6/6 light red slip; Faintly burnished; Medium baked; Crescent-shaped, quadrangular in cross section with a rounded tip. Broken and 1/5 of it is present. There are 1/3 fractures on the front face. 22 gr.

Figure 12:7; 8:5 Code: 308.15.09.133; Kınık Höyük (Sinanpaşa- Kınık Village); Length, width, thickness: 6.4, 1.9, 1.9; H. Diameter: 0.5; 7.5YR 5/4 strong brown clay; Fine sandy, mica, grit; 7.5YR 6/4 light brown slip; Faintly burnished; Badly baked; some parts of the surface is black due to cooking; Crescent-shaped, quadrangular in cross-section with a rounded tip. Broken and 1/2 of it is present. 35 gr.

Figure 11:13; 7:13 Code: 308.15.09.121; Kınık Höyük (Sinanpaşa- Kınık Village); Length, width, thickness: 10.5 (approx. 20.1), 2.9, 2.1; H. Diameter- D.B.H.: 0.3x0.6, 17.4; 5Y 8/1 white clay; Fine sandy, mica, grit, lime; 5YR 7/6 reddish yellow slip; Faintly burnished; Well baked; Crescent-shaped, quadrangular in cross-section, with rounded corners and angular tips. Broken and 1/2 of it is present. 86 gr.

Figure 11:10; 7:10 Code: 308.15.08.126; Kınık Höyük (Sinanpaşa- Kınık Village); Length, width, thickness: 6.9, 2.6, 2; H. Diameter: Broken; 2.5YR 7/8 light red clay; Fine sandy, mica, grit, lime; 5YR 7/6 reddish yellow slip; Faintly burnished; Medium baked; Crescent-shaped, quadrangular in cross-section; no tip. Broken and 1/3 of it is present. 47 gr.

Figure 12:17; 8:15 Code: 308.15.08.48; Kınık Höyük (Sinanpaşa- Kınık Village); Length, width, thickness: 4.9, 2.1, 2.4; H. Diameter: 0.5x0.6; 10R 6/8 light red clay; Fine sandy, mica, grit; 10R 6/8 light red slip; Faintly burnished; Well baked; Decoration: There is a circular imprint (rosette?) by turning a short tool in the middle; Crescent-shaped, quadrangular in cross-section, with rounded corners and a rounded tip. Broken and 1/3 of it is present. 46 gr.

Figure 14:5; 10:5 Code: 308.20.18.414; Küçük Höyük (Sinanpaşa- Küçükhüyük Town); Length, width, thickness: 7.5 (approx. 13.1), 4, 4; H. Diameter- D.B.H.: 0.6x1, 10.4; 5YR 7/6 reddish yellow clay; Fine sandy, abundant mica, grit; 5YR 6/6 reddish yellow slip; Faintly burnished; Badly baked; U-shaped, oval in cross section with pointed tips. Broken and 1/2 of it is present. 178 gr.

Figure 12:19; 8:17 Code: 308.20.18.397; Küçük Höyük (Sinanpaşa- Küçükhüyük Town); Length, width, thickness: 6, 2.5, 2.5; H. Diameter: 0.5; 2.5YR 7/6 reddish yellow clay; Fine sandy, mica, grit, lime, plant; 2.5YR 7/6 reddish yellow slip; Burnished; Badly baked; Crescent-shaped, quadrangular in cross-section with angular tips. There is a piece of metal in the hole. Broken and 1/2 of it is present. 44 gr.

Figure 14:9; 10:9 Code: 308.20.18.07; Küçük Höyük (Sinanpaşa- Küçükhüyük Town); Length, width, thickness: 13.6, 4, 3.9; H. Diameter- D.B.H.: 0.6x0.9, 10.9; 10R 5/6 red clay; Medium sandy, abundant mica, abundant grit, lime, plant; 2.5YR 5/8 red slip; Unburnished; Medium baked; U-shaped; oval in cross-section; angular tips. Intact. One of the tips is partially broken.

Figure 13:21; 9:21 Code: 308.16.09.196; Nuh Höyük (Sinanpaşa- Nuh Village); Length, width, thickness: 4.8, 1.9, 2; H. Diameter: 0.4; 10YR 6/6 brownish yellow clay; Fine sandy, little mica, abundant grit, lime; 10YR 7/4 very pale brown slip; Faintly burnished; Medium baked; Crescent-shaped with irregular quadrangular cross-section and an irregular angular tip. Broken and 1/4 of it is present. 31 gr.

Figure 12:1; 8:1 Code: 308.16.09.198; Nuh Höyük (Sinanpaşa- Nuh Village); Length, width, thickness: 6, 3.3, 2.4; H. Diameter: 0.5x0.7; 5YR 7/8 reddish yellow clay; Fine sandy, mica, grit, lime; 5YR 6/6 reddish yellow slip; Faintly burnished; Medium baked; Crescent-shaped, quadrangular in section, with rounded corners and an irregular tip. The interior of the loom weight is flattened. Broken and 1/3 of it is present. 62 gr.

Figure 11:22; 7:21 Code: 308.16.09.110; Nuh Höyük (Sinanpaşa- Nuh Village); Length, width, thickness: 4.4, 2.5, 2.2; H. Diameter: 0.4x0.6; 10YR 7/4 very pale brown clay; Fine sandy, abundant fine mica, grit, lime; 7.5YR 5/4 brown slip; Faintly burnished; Medium baked; Crescent-shaped, quadrangular in section, with rounded corners and a rounded tip. Broken and 1/4 of it is present. 25 gr.

Figure 14:10; 10:10 Code: 317.12.17.55; Kırınardı Mevkii (Afyon- Nuribey Town); Length, width, thickness: 7, 3.2, 1.9; H. Diameter: 0.5x0.8; 10YR 6/4 light yellow brown clay; Fine sandy, mica, grit, lime; 10YR 6/4 light yellowish brown slip; Burnished; Badly baked; U-shaped, irregular elliptical section; fractures at the tip. The back side is flattened. Broken and 1/2 of it is present. 52 gr.

Figure 13:29; 9:29 Code: 317.12.17.15; Kırınardı Mevkii (Afyon- Nuribey Town); Length, width, thickness: 6.7, 2.9, 2.9; H. Diameter: 0.6x0.8; 5YR 7/6 reddish yellow clay; Fine sandy, mica, grit, lime, plant; 10R 5/4 weak red slip; Burnished; Well baked; Crescent-shaped, quadrangular in cross-section, with rounded corners and angular tips. Broken and 1/2 of it is present. 85 gr.

Figure 14:20; 10:20 Code: 317.12.17.23; Kırınardı Mevkii (Afyon- Nuribey Town); Length, width, thickness: 5 (approx. 6.2), 3, 2.4; H. Diameter: 0.5; 4.3; 5YR 6/6 reddish yellow clay; Fine sandy, mica, grit, lime, plant; 7.5YR 6/4 light brown slip; Faintly burnished; Medium baked; U-shaped, oval in cross section and pointed tips. Broken and 2/3 of it is present. 49 gr.

Figure 13:8; 9:8 Code: 317.18.18.22; Çorca Höyük (Afyonkarahisar); Length, width, thickness: 5.1, 2, 1.9; H. Diameter: 0.3x0.5; 7.5YR 7/4 pink clay; Fine sandy, mica, grit, lime, plant; 7.5YR 6/4 light brown slip; Faintly burnished; Medium baked; Decoration: There is a 0.8 cm wide circular imprint near the tip of the piece; Crescent-shaped, quadrangular in cross-section, and angular tips. Broken and 1/3 of it is present. 31 gr.

Figure 13:11; 9:11 Code: 317.18.18.60; Çorca Höyük (Afyonkarahisar); Length, width, thickness: 5.1, 2.2, 1.8; H. Diameter: 0.5; 10YR 6/4 light yellow brown clay; Fine sandy, mica, grit, lime; 10YR 6/4 light yellowish brown slip; Unburnished; Well baked; Crescent-shaped, irregular quadrangular section with a rounded tip. There are fractures on the back. Broken and 1/3 of it is present. 24 gr.

Figure 14:2; 10:2 Code: 307.08.06.66; Sarıçayır Mevkii (İscehisar- Doğanlar Village); Length, width, thickness: 6.8, 4.3, 3.3; H. Diameter: 0.5x0.8; 5YR 6/2 pinkish gray clay; Medium sandy, mica, grit, lime; 2.5YR 4/6 red slip; Burnished; Badly baked; Crescent-shaped, oval in cross section with a rounded tip. Broken and 1/2 of it is present. 109 gr.

Figure 13:28; 9:28 Code: 307.08.36.69; Sarıçayır Mevkii (İscehisar- Doğanlar Village); Length, width, thickness: 8, 2.7, 2.1; H. Diameter: 0.5; 10YR 6/2 light brownish gray clay; Fine sandy, abundant mica, grit, lime; 7.5YR 6/4 light brown slip; Unburnished; Badly baked; V-shaped, quadrangular in cross-section, with rounded edges and angular tips. Broken and 1/2 of it is present. 72 gr.

Dimensions are given in cm, weights are given in grams. H. Diameter: Hole Diameter; D.B.H: Distance Between Holes

