

# Histological structure of the colonic lymphoglandular complex in the Angora goat

Alev Gürol BAYRAKTAROĞLU\*, Mehmet ÖZBEK\*\*, Nevin KURTDEDE\*\*\*, Hikmet ALTUNAY\*\*\*, Levent ERGÜN\*\*\*, Emel ERGÜN\*\*\*, Reşat Nuri AŞTI\*

**Abstract:** In this study, the histological structure of the colonic mucosal lymphoid tissues was investigated in the Angora goat. Tissue specimens taken from the proximal and distal colon of 5 healthy adult Angora goats, were used as the material for histological examination, which were slaughtered at slaughterhouses in the vicinity of the Ankara province. Histological examination demonstrated the presence of the colonic lymphoglandular complex (LGC), which had a dome-like structure and was composed of solitary lymphoid follicles. It was observed that the follicle-associated epithelium of the LGC was composed of prismatic enterocytes and M cells, the latter of which were ascertained to have taken up intraepithelial immune cells. M cells were distinguished from enterocytes by the presence of irregular microvilli, referred to

as microfolds, and also pinocytic vesicles on their apical surface. M cells had oval nuclei localized to the basal region of the cell, and in this respect, showed histomorphological similarity to the M cells of the Peyer's patches. High endothelial venules (HEVs) were observed at the base of the lymphoid follicles. In result, it was determined that, solitary mucosal lymphoid follicles displayed a dome-type lymphoglandular complex configuration in the colon of the Angora goat.

*Keywords:* Angora goat, colon, lymphoglandular complex, m cells.

## Ankara keçilerinde kolon lenfoglanduler kompleksinin histolojik yapısı

**Öz:** Bu çalışma Ankara keçisinde kolondaki mukozal lenfoid dokuların histolojik yapısını araştırmak amacıyla

\* Assoc. Prof. Dr., Department of Histology and Embryology, Faculty of Veterinary Medicine, University of Ankara, Ankara, Turkey

\*\* Res. Asst, Department of Histology and Embryology, Faculty of Veterinary Medicine, University of Ankara, Ankara, Turkey

\*\*\* Prof. Dr., Department of Histology and Embryology, Faculty of Veterinary Medicine, University of Ankara, Ankara, Turkey

yapıldı. Çalışmada materyal olarak, Ankara çevresindeki mezbahalardan sağlıklı erişkin 5 adet Ankara keçisinin kesim sonrası proksimal ve distal kolonundan alınan doku örnekleri, histolojik inceleme için kullanıldı. Yapılan incelemeler sonrasında kolonda dom yapısı gösteren ve soliter tarzda lenf foliküllerinden oluşan lenfoglandular kompleks (LGC) yapısı gözlemlendi. LGC'ye ait folikülle ilişkili epitelin, prizmatik enterositler ve intraepitelial yerleşim gösteren immun sistem hücrelerini paketleyen M hücrelerinden oluştuğu dikkat çekti. M hücrelerinde, enterositlerden farklı olarak, apikal yüzlerinde mikrofild adı verilen düzensiz mikrovilluslar ve pinositoz veziküllerinin yer aldığı gözlemlendi. Ayrıca, M hücrelerinin bazale yerleşmiş oval çekirdeğe sahip olduğu dikkat çekti. Bu özellikleri ile Peyer plaklarındaki M hücrelerine histomorfolojik olarak benzerlik gösterdiği saptandı. Foliküllerin dip kısmında “yüksek endoteliyal venüller (HEV)” gözlemlendi. Sonuç olarak, Ankara keçisi kolonunda soliter tarzda dağılım gösteren mukozal lenf foliküllerinin, lenfoglandular kompleks dome tipi bir yerleşim gösterdiği belirlendi.

*Anahtar kelimeler:* Ankara keçisi, kolon, lenfoglandular kompleks, m hücresi

## Introduction

In mammals, the digestive system mucosa is the main site, where the organism is exposed to antigens. Both solitary and aggregated lymphoid follicles play an important role in the immune protection of the digestive system. In several animal species, gut-associated lymphoid tissue (GALT) was reported to exist in the form of the ileocecal tonsil in the lower part of the small intestine (3, 6, 9). The mucosal lymphoid tissue shows two different localisation patterns in the terminal area of distribution of the GALT in the gastrointestinal tract. The first localisation pattern is characterized by the presence of solitary and isolated lymphoid follicles restricted to the lamina propria of the colonic mucosa, the luminal surface of which is lined by follicle-associated epithelium (FAE). These structures are referred to as the “propria nodules (PN)” (3, 11, 12, 17). In the other immunological tissues of the colon, the lymphoid follicles are, to a large extent, localised to the submucosa beneath the lamina muscularis. Differently from the PN, on the luminal surface of these follicles, the crypts closely associated with the colonic lumen give off many branches into the inner regions of the lymphoid tissue, in the form of smaller diverticula. In several

species, these structures are referred to as the “lymphoglandular complex (LGC)” (3, 13, 14). The LGC, which is a structure specific to the colon, is suggested to be analogous to the Peyer’s patches and appendix (3).

O’leary and Sweeney (13) described two different types of LGC in the human colon, namely, the non-dome and dome configurations. These researchers also reported the presence of M cells, similar in structure to those of the Peyer’s patches, in the follicle-associated epithelium of only the dome-type lymphoid follicles. Afterwards, Fujimura et al. (6) reported to have observed features typical of colonic M cells upon the transmission electron microscopic (TEM) examination of biopsy samples taken from the human colon. Accordingly, the M cells were observed to have taken up many mature and immature lymphocytes and plasmocytes into their cytoplasm. Their apical cytoplasm contained microfolds and a well-developed tubulo-alveolar system (6).

On the basis of their investigation on the human colon, Jacob et al. (9) reported that the columnar cells lining the follicles of the LGC possessed a centrally or basally located nucleus and multiple mitochondria. These researchers also ascertained that the supranuclear area

of these cells contained membrane-bound structures, which resembled lysosomes. goblet cells, which are generally exist in crypts, are not frequent in follicle- associated epithelium (9).

Lymphocytes are continuously circulated from the bloodstream into secondary lymphoid organs, and from secondary lymphoid organs into the bloodstream. In secondary lymphoid organs, this continuous circulation is regulated by specialized post-capillary venules, referred to as the “high endothelial venules (HEVs)”, and by a series of adhesive interactions which occurs among lymphocytes (10).

To date, research on the GALT has mostly focussed on the investigation of the Peyer’s patches, appendix and the avian bursa of Fabricius. To the authors’ knowledge, the colonic lymphoid tissues of the Angora goat, which is a local breed of Anatolia, was not investigated before. Aim of this study was to investigate the histological structure of the LGC in the Angora goat.

### **Material and Methods**

In this study, tissue specimens taken from the proximal and distal colon of 5 healthy adult Angora goats, slaughtered at slaughterhouses of the Ankara province, were used for histological examination. After being prefixed

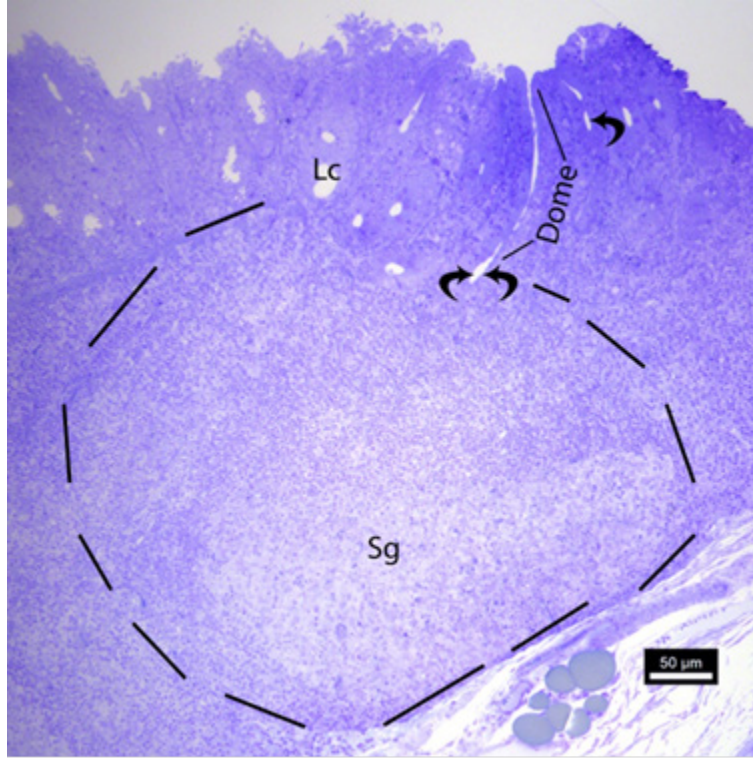
in glutaraldehyde and paraformaldehyde, and then fixed in osmic acid, the tissue samples were passed through a series of graded alcohols and propylene oxide, and finally, were embedded in Araldite M. One-micron-thick semi-thin serial sections were cut and stained with toluidine blue. After the targeted areas were marked in these sections, thin sections of a thickness of 300-400 Angstrom were cut. These thin sections were stained with uranyl acetate and lead citrate (18), and examined using a Carl Zeiss EM 9S2 model electron microscope.

### Results

The light microscopic examination of the semi-thin sections of the proximal and distal colon revealed the presence of the dome-type LGC in the lymphoid tissue (Figure 1). It was observed that the LGC was composed of solitary lymphoid follicles. The secondary lymphoid follicles, which contained a germinal centre, penetrated the lamina muscularis, and extended from the lamina propria to the submucosa. In this region, the lamina muscularis was observed to be disrupted. A distinct dome region was distinguished on the luminal surface of the follicles. The dome region harboured high prismatic enterocytes and M cells (Figure 2), but lacked goblet cells. The cells in the dome

region were predominated by columnar cells. Lymphocytes were observed in the proximity of the cytoplasm of the M cells. High endothelial venules, of typical cubic shape, were present at the base of the lymphoid follicles (Figure 3).

The examination of the ultrastructure of the follicle-associated epithelium (Figure 4) demonstrated that the enterocytes making up the epithelium had euchromatic nuclei and contained multiple mitochondria in their cytoplasm. The luminal surface of these cells was covered by regular microvilli, and beneath these microvilli a terminal web existed. It was determined that, while the M cells formed junctional complexes with tight junctions and desmosomes, they did not have any connection with the intraepithelial immune cells. M cells were distinguished from enterocytes by the irregular microvilli and pinocytic vesicles on their apical surface. M cells were observed to have a basally situated oval nucleus. Furthermore, it was observed that the intraepithelial lymphocytes (IEL) with heterochromatic nuclei surrounded the M cells.



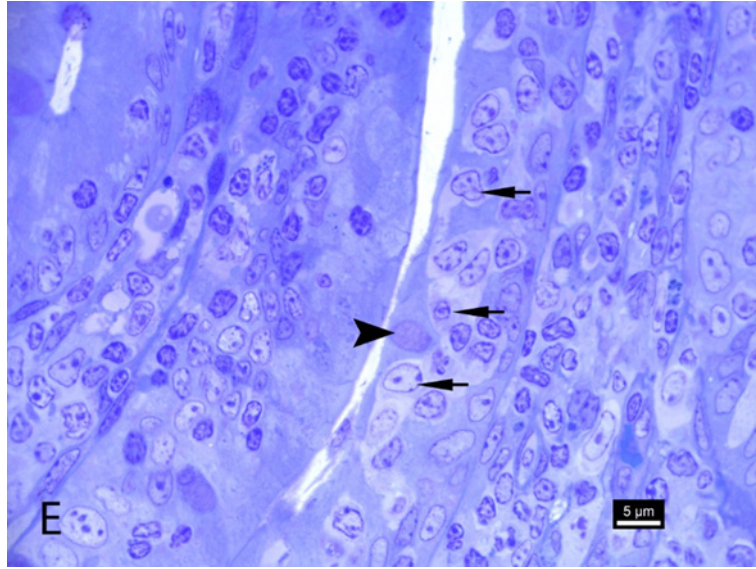
**Figure 1:** The structure of the colonic lymphoglandular complex. A secondary follicle with the germinal centre (Sg) (the inside of the circle drawn with the dashed line). The epithelial diverticula of the dome-type LGC (curved arrows), Lieberkühn's crypts (Lc). (Toluidine blue)

**Şekil 1:** Kolon lenfoglandular kompleks yapısı. Sentrum germinativum (Sg) yapısı gösteren sekonder tip folikül (kesik çizgili alanın içi). Dom yapısı gösteren LGC epitelyal divertiküller (eğri oklar), Lieberkühn kripleri (Lc). (Toluidin blue)

### Discussion and Conclusion

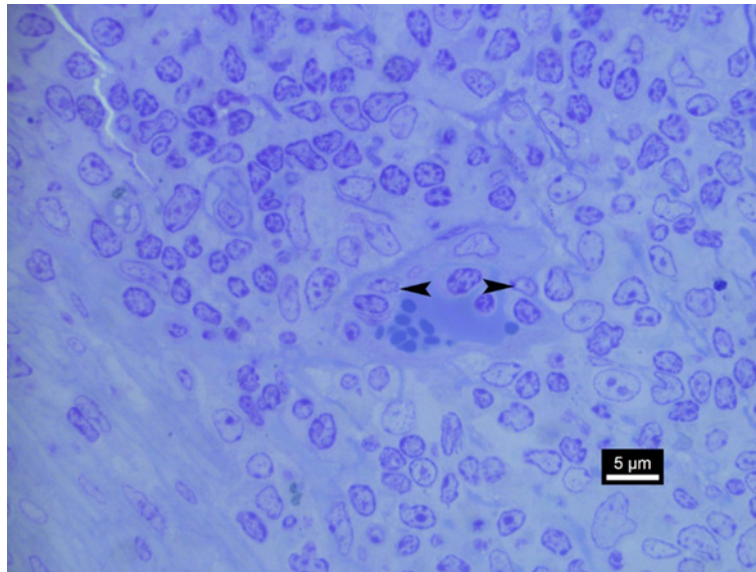
The presence of GALT in the large intestine was reported in cattle (8), sheep (8), pigs (2, 5, 8), dogs (1, 8), cats (8), rats (3), primates (16) and humans (19). In the large intestine, the lymphoid follicles of the GALT display an aggregated distribution in only rats (3), and a solitary distribution in humans (19), pigs (2, 5, 12) and horses (8). Histologically, the colonic

lymphoid follicles exist either in the form of a lymphoglandular complex (LGC) or in the form of propria nodules (PN). The LGC is composed of submucosal lymphoid follicles, which are distributed throughout the mucosa and contain epithelial diverticula (11). The histomorphology of the lymphoid tissue of the large intestine varies among animal species.



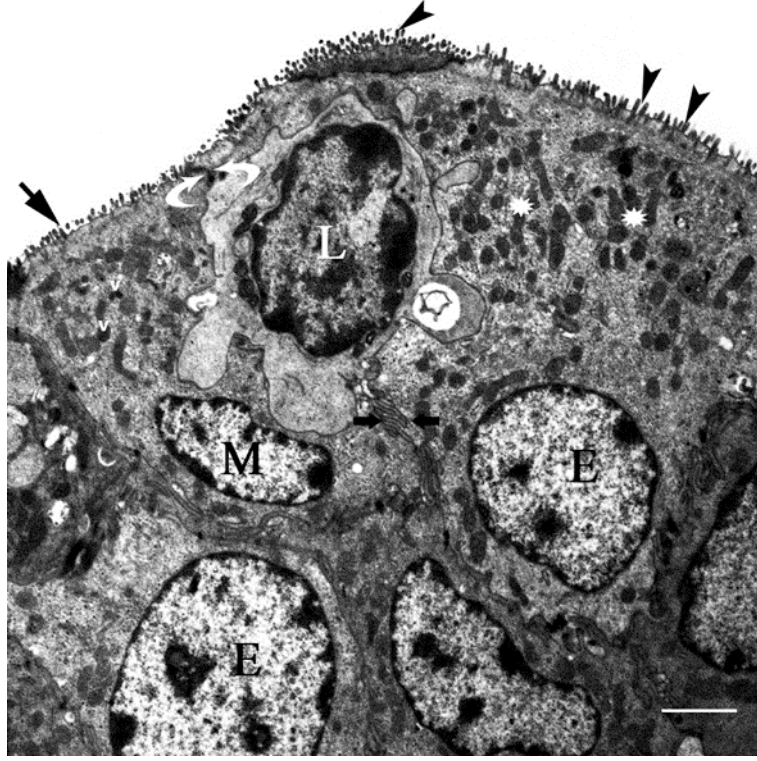
**Figure 2:** The FAE of the dome region of the LGC. M cell (arrowhead), lymphocytes (arrows), enterocyte (E). (Toluidine blue)

**Şekil 2:** LGC'nin dom bölgesinin FAE'si. M hücresi (ok başı), lenfositler (oklar), enterosit (E). (Toluidin blue)



**Figure 3:** The HEVs at the base of the follicles. Cubic endothelial cells (arrowheads). (Toluidine blue)

**Şekil 3:** Foliküllerin dip kısımlarında yerleşen HEV'ler. Kübik şekilli endotel hücreleri (ok başları). (Toluidin blue)



**Figure 4:** The ultrastructure of the FAE of the dome region of the LGC. Microfold (arrows) and M cell (M) displaying a vesicle (V) in its apical cytoplasm. The intercellular connections of the M cells, namely, the tight junctions (curved arrows) and desmosomes (bold arrows). IEL (L). Enterocytes (E) with dense mitochondria (stars), regular microvilli on their apical surface (arrowheads), and a euchromatic nucleus. Bar=3  $\mu$ m.

**Şekil 4:** LGC'in dom bölgesinin FAE'sinin ultrastruktürel yapısı. Mikrofold (oklar) ve apikal sitoplazmasında vezikül (V) yapısı gösteren M hücresi (M). M hücrelerinin hücresel bağlantıları olan tight junction (eğri oklar) ve lateral uzantılar (kalın oklar). IEL (L). Sitoplazmasında yoğun mitokondriyon (yıldız), apikal yüzünde düzenli mikrovillus (ok başları) ve ökromatik çekirdeğe sahip enterositler (E). Bar=3  $\mu$ m.

While both the PN and LGC exist in the bovine large intestine, in other animal species either the PN or the LGC exists in the large intestine (11). Liebler et al. (11) suggested that while the propria nodules existed in greater numbers in one-week-old calves, the LGC predominated in older calves. In the present study, the dome-type LGC was detected in the colon of the Angora goat.

Histomorphologically, the colonic LGC displays similarity to the Peyer's patches. These two structures are differentiated by the Peyer's patches containing aggregated lymphoid follicles and the colonic lymphoid follicles having a solitary distribution. The lymphoid follicles of the LGC and the germinal centre of these follicles are smaller than those of the Peyer's patches (14). In their research on the human colon, O'leary and Sweeney (13) determined that in normal individuals, approximately 1% of the LGC possessed a germinal centre. In agreement with the findings reported by Owen et al. (14), in the present study, it was observed that the LGC contained solitary secondary lymphoid follicles with a germinal centre.

The LGC contains all types of cells found in the lymphoepithelial structure of the small intestine. In healthy individuals, in the LGC of the proximal colon, each 20 colonic epithelial cells contain 1 or 2 M cells, and it was indicated that this number is four-fold in the rectum (13). In the distal colon of mice, in each centimetre square, on average 1.4 LGC is randomly distributed. On the other hand, in the proximal colon of mice and rats, the

LGC shows an antimesenteric distribution (4, 12, 15). In the present study, in agreement with the findings reported by O'leary and Sweeney (13), it was ascertained that the FAE of the LGC was predominated by prismatic enterocytes and contained only a few M cells.

In calves, the FAE lining the PN and LGC contains cells, which resemble the M cells localised to the dome region of the Peyer's patches in the small intestine. These cells display similarity to the M cells of the Peyer's patches in that they have an electron-lucent cytoplasm and harbour short and thin microfolds and numerous apical vesicles. Furthermore, these cells are associated with intraepithelial immune cells (11). The ultrastructure of the lymphoid tissue in the large intestine has been described in rodents. In their research on rats, Bland and Britton (3) reported that colonic M cells took up ferritin and antigens, such as bacteria, into their cytoplasm, and transferred them to intraepithelial lymphocytes. In the present study, it was determined that M cells displayed these features previously reported by the indicated researchers.

Although the localisation of HEVs in lymphoid organs concentrates in T lymphocyte regions, these specialised blood vessels serve for the entry of not only T lymphocytes but also B lymphocytes into lymphoid organs (7). When examined by light microscopy, it is observed that the endothelial cells of the HEVs are typically of cubic shape and contain abundant lymphocytes in their lumen (10). In humans, HEVs are found in all secondary lymphoid organs, excluding the spleen (7).



The development of the organised mucosal lymphoid response in all mucosae is made possible through the transfer of memory cells to other mucosal lymphoid tissues by circulation (11). In the present study, the observation of HEVs at the base of lymphoid follicles suggests that this structure is essential to the mucosal defence of the colon.

In conclusion, the determination of the presence of the dome-type LGC in the colon of the Angora goat and the presence of M cells in the FAE of the LGC suggests that the colon is involved in the mucosal defence system.

### References

1. **Atkins AM, Schofield GC** (1972): *Lymphoglandular complexes in the large intestine of the dog*. J Anat, **113(2)**: 169-178.
2. **Biswal G, Morrill CC, Dorstewitz EL** (1953): *Glands in the submucosa of the porcine colon*. Cornell Vet, **44(1)**:93-102.
3. **Bland PW, Britton DC** (1984): *Morphological study of antigen-sampling structures in the rat large intestine*. Infect Immun, **43 (2)**: 693-699.
4. **Deasy JM, Steele JrG, Ross DS, Lahey SJ, Wilson RE, Madara J** (1983): *Gut-associated lymphoid tissue and dimethylhydrazine-induced colorectal carcinoma in the wistar/furth rat*. J Surg Oncol, **24(1)**: 36-40.
5. **Ferguson HW, Neill SD, Pearson GR** (1980): *Dysentery in pigs associated with cystic enlargement of submucosal glands in the large intestine*. Can J Comp Med. **44(2)**: 109-114.
6. **Fujimura Y, Hosobe M, Kihara T** (1992): *Ultrastructural study of M cells from colonic lymphoid nodules obtained by colonoscopic biopsy*. Dig Dis Sci, **37(7)**: 1089-1098.
7. **Girard JP, Springer TA** (1995): *High endothelial venules (HEVs): specialized endothelium for lymphocyte migration*. Immunol Today, **16(9)**: 449-457.
8. **Hebel R** (1960): *Untersuchungen über das vorkommen von lymphatischen darmkrypten in der tunica submucosa des darmes von schwein, rind, schaf, hund und katze*. Anat Anz, **109**:7-27.
9. **Jacob E, Baker SJ, Swaminathan SP** (1987): *'M' cells in the follicle-associated epithelium of the human colon*. Histopathology, **11(9)**: 941-952.
10. **Kawashima H, Hirakawa J, Tobisawa Y, Fukuda M, Saga Y** (2009): *Conditional gene targeting in mouse high endothelial venules*. J Immunol, **182(9)**: 5461-5468.
11. **Liebler EM, Pohlenz JF, Woode GN** (1988): *Gut-associated lymphoid tissue in the large intestine of calves. I. Distribution and Histology*. Vet Pathol, **25(6)**: 503-508.
12. **Morfitt DC, Pohlenz JFL** (1989): *Porcine colonic lymphoglandular complex: Distribution, structure, and epithelium*. Am J Anat, **184 (1)**: 41-51.
13. **O'leary AD, Sweeney EC** (1986): *Lymphoglandular complexes of the colon: structure and distribution*. Histopathology, **10 (3)**: 267-283.

- 14. Owen RL, Piazza AJ, Ermak TH (1991):** *Ultrastructural and cytoarchitectural features of lymphoreticular organs in the colon and rectum of adult BALB/c mice.* Am J Anat, **190 (1):** 10-18.
- 15. Perry GA, Sharp JG (1988):** *Characterization of proximal colonic lymphoid tissue in the Mouse.* Anat Rec, **220(3):** 305-312.
- 16. Scott GB (1979):** *The comparative pathology of the primate colon.* J Pathol, **127(2):** 65-72.
- 17. Szakal AK, Diwan BA, Blackman KE (1980):** *Modulation of immunological competence in 1,2-dimethylhydrazinesensitive SWR/J mice during colorectal carcinogenesis.* Cancer Res, **40:** 2475.
- 18. Venable JH, Coggeshall RA (1965):** *Simplified lead citrate stain for use in electron microscopy.* J Cell Biology, **25:** 407-408.
- 19. Watanabe H, Margulis AR, Harter L (1983):** *The occurrence of lymphoid nodules in the colon of adults.* J Clin Gastroenterol, **5(6):** 535-539.

---

Geliş: 27.01.2016 / Kabul: 25.02.2016

**Yazışma Adresi:**

Doç.Dr. Alev Gürol BAYRAKTAROĞLU  
Ankara Üniversitesi Veteriner Fakültesi  
Histoloji-Embriyoloji Anabilim Dalı, 06110,  
Dışkapı/ ANKARA.  
dralevgurol@gmail.com