

**TÜRKİYE LEPİDOPTERA FAUNASI İÇİN İLKEL LİSTE : III**  
**THE PRELIMINARY LIST OF LEPIDOPTERA FAUNE OF TURKEY: III**

**İ. Akif KANSU**

Familiya (Family) : LYCAENIDAE.

66) *Lampides (Cosmolyce) boeticus* L.

The Long-tailed Blue.

Aydın (Germencik), Hatay (Antakya, İskenderun), İzmir (Bornova, Çeşme),  
Ordu (Merkez), Seyhan (Osmaniye).

67) *Strymon W-album* Knoch.

Ankara (Kacıkadın).

68) *Strymon acaciae* F.

The Acacia Hairstreak.

Ankara (Kacıkadın, Bağlum, Çubuk barajı),

*S. acaciae gerhardi* Stgr.

Ankara (Hacıkadın, Gölbaşı), Konya (Ereğli).

69) *Callophrys rubi* L.

Ankara (Hacıkadın, Etlik).

70) *Lycaena phlaeas* L.

The Small Copper.

Ankara (Merkez, Çubuk Barajı, Atatürk Orman Çiftliği), Balıkesir (Erdek),  
Diyarbakır (Sath köy), Hatay (İskenderun), İzmir (Bornova, Çeşme), Sam-  
sun (Merkez, Gelemen).

71) *Heodes (Chrysophanus) ottomanus* Lef.

Ankara (Merkez, Keçiören, Hacıkadın, Bağlum), Hatay (Antakya), Seyhan  
(Adana).

72) *Lysandra bellargus* Rott.

The Clifden or Adonis Blue.

Ankara (Merkez, Keçiören, Hacıkadın, Bağlum).

73) *Lysandra coridon* Poda.

Ankara (Hacıkadın).

- 74) *Agrodietus (Lycaena) dolus* Hbn.  
Ankara (Hacıkadın, Dikmen, Hasanoğlu - Elmadağ).
- 75) *Meleageria daphnis* Schiff. (*Lycaena meleager* Esp.).  
The Meleager Blue.  
Ankara (Hacıkadın), Konya (Dörtgöz değirmeni).
- 76) *Cyaniris (Lycaena) semiargus* Rott.  
Ankara (Beynam).
- 77) *Celastrina (Cyaniris) agriolus hypoleuca* Koll.  
The Holly Blue.  
İzmir (Çeşme), Niğde (Merkez).
- 78) *Aricia (Polyommatus) anterus* Frey.  
Freyer's Blue.  
Bolu (Akçakoca).
- 79) *Glaucopsyche alexis aeruginosa* Stgr.  
The Green Blackspot Blue.  
Ankara (Hacıkadın)
- 80) *Zizeeria knysana karsandra* Mre.  
The Small Mauve Blue.  
Hatay (İskenderun), Seyhan (Adana).
- 81) *Aricia agestis* Schiff. (*Lycaena astrache* Berg.)  
The Brown Argus.  
Ankara (Bağlum.)  
*A. agestis infracandida* Vty.  
Ankara (Merkez, Hacıkadın), Konya (Dörtgöz değirmeni), Sakarya (Adapazarı).
- 82) *Plebejus argus sultana* Frost.  
Ankara (Hasanoğlu-Elmadağ), Balıkesir (Erdek), Bolu (Akçakoca), Sakarya (Adapazarı).
- 83) *Polyommatus icarus* Rott.  
The Common Blue.  
Ankara (Merkez, Keçiören, Hacıkadın, Çubuk barajı, Esenboğa, Bağlum, Dikmen Gölbaşı, Beynam), Artvin (Murgul), Balıkesir (Erdek), Bolu (Akçakoca), Diyarbakır (Sathi köy), İstanbul (Çınarcık - Yalova), İzmir (Çeşme), Konya (Dörtgözdeğirmeni), Muğla (Dalaman), Niğde (Merkez), Ordu (Merkez), Sakarya (Adapazarı), Seyhan (Adana, Karatas, Kozan, Osmaniye).
- P. icarus lucia* Culot.  
Muğla (Dalaman).
- 84) *Tarucus teophrastus balcanicus* Frr.  
The Little Tiger Blue.  
Seyhan (Adana).

**Familiya (Family) : LIBYTHEIDAE**

85) *Libythea celtis* Fuessl.

Ankara (Hacıkadın).

**Familiya (Family) : HESPERIIDAE.**

86) *Thymelicus (Adopaea) thaumas* Hfn.

Ankara (Merkez, Hacıkadın, Atatürk Orman Çiftliği, Hasanoğlan - Elmadağ),  
Bolu (Akçakoca).

87) *Thymelicus lineola* O.

The Essex Skipper.

Ankara (Hasanoğlan - Elmadağ).

88) *Thymelicus actaeon* Rott.

The Lulworth Skipper.

Ankara (Merkez, Hacıkadın).

89) *Gegenes (Parnara) mathias* F.

Seyhan (Adana).

90) *Gegenes nostradamus* F.

The Peaty Skipper

Seyhan (Adana).

91) *Reverdinus alchymillae* Hbn.

Ankara (Merkez, Hacıkadın), İzmir (Bornova).

92) *Pyrgus serratulae alveoides* Stgr.

Rambur's Skipper.

Ankara (Aydos).

93) *Muschampia tessellum nomas* Led.

The Large Chequered Skipper.

Yer belirsiz (No locality).

#### **ADDENDA (Ekler)**

**Familiya (Family) : PIERIDAE**

94) *Gonepteryx cleopatra* L.

Ege bölgesinden tek örnek, yer belirtilmemiş (Only one specimen from Aegean region, no exact locality.)

95) *Leptidia (Leucophasia) sinapis* L.

Ankara (Merkez-Hacıkadın) Artvin (Maradit).

*L. sinapis diniensis* Bdv.

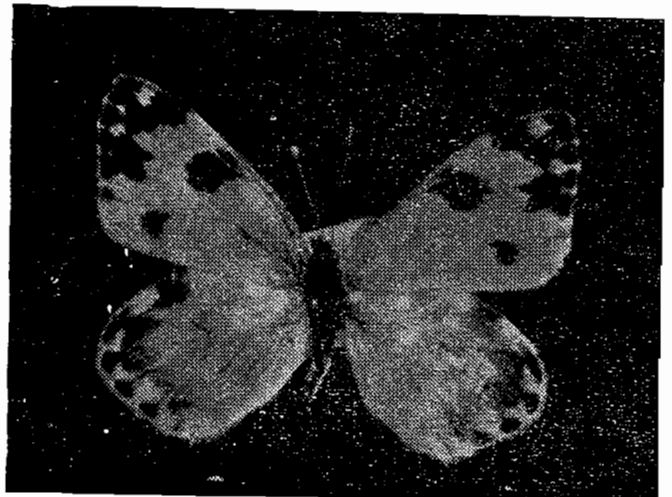
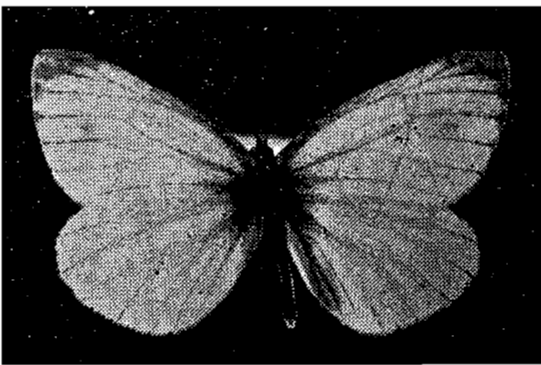
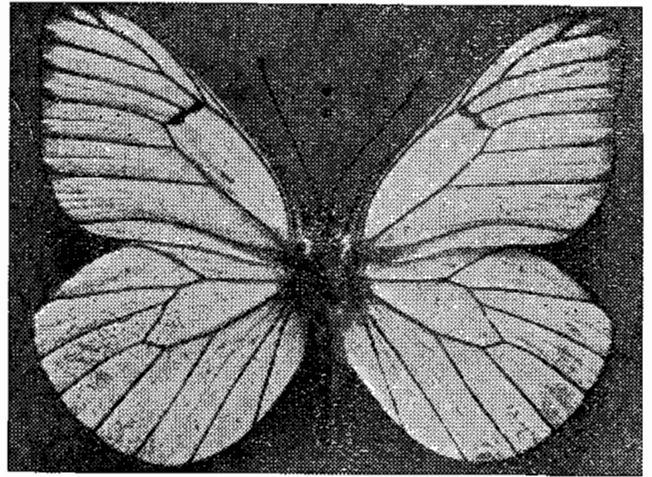
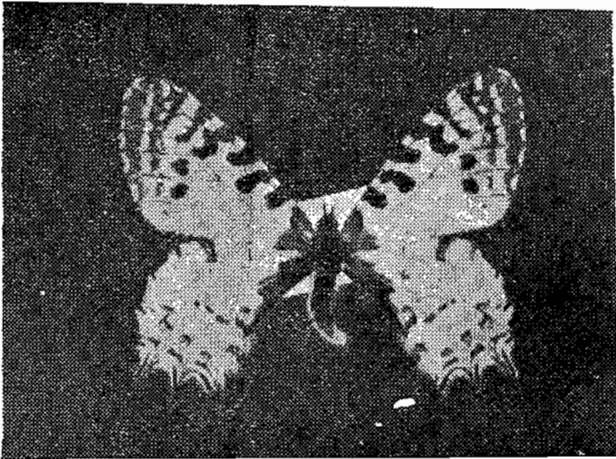
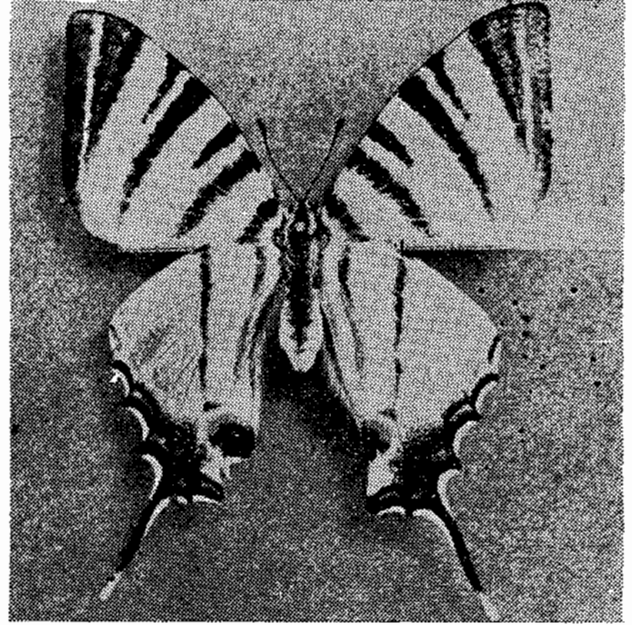
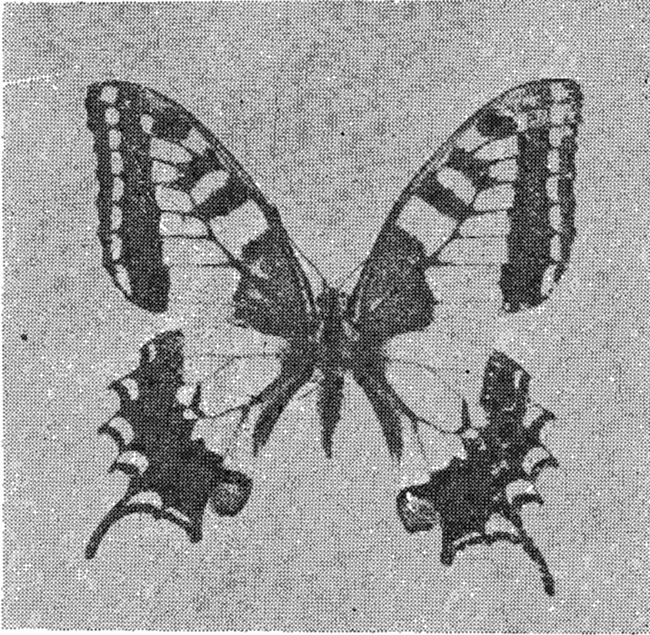
Ankara (Hacıkadın), Artvin (Murgul, Maradit)

**Familiya (Family) : NYMPHALIDAE**

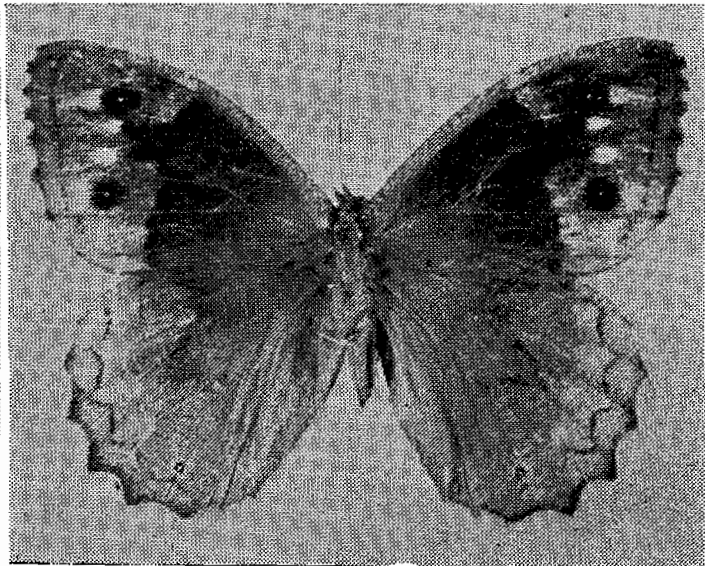
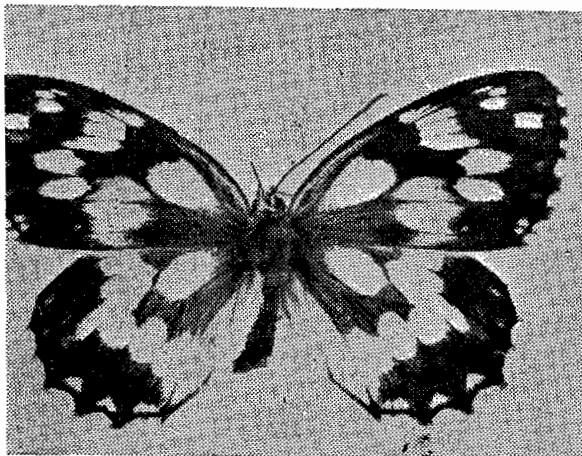
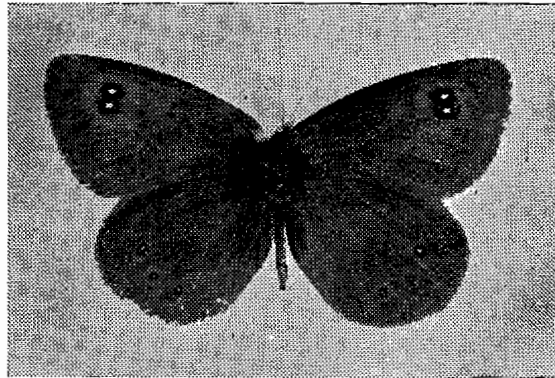
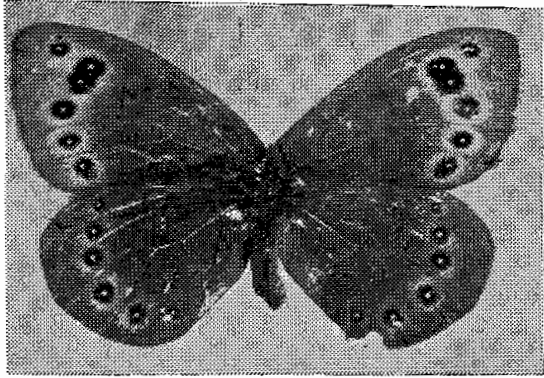
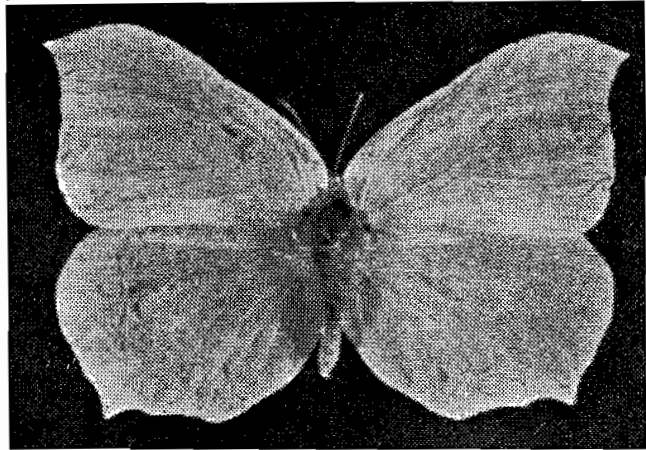
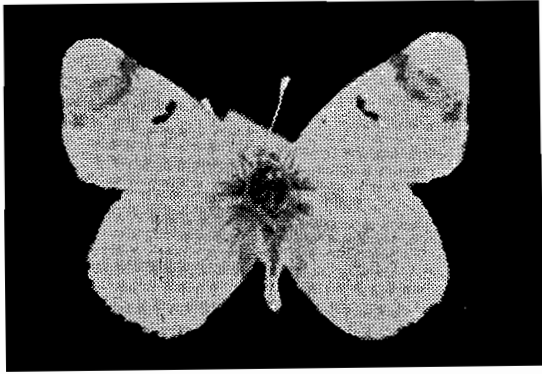
96) *Charaxes jasius* L.

Muğla (Dalaman).

1. *Papilio machaon* L. (No. 1)
2. *Iphiclides podalirius* L. (No. 2)
3. *Zerynthia cerisyi deyrollei* Obn. (No. 3)
4. *Aporia crataegi* L. (No.6) ♂
5. *Pieris napi* L. (No. 10) ♂
6. *Leucochloe daplidice* L. (No. 12)

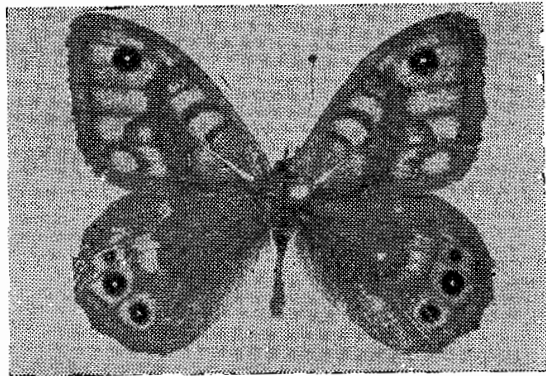
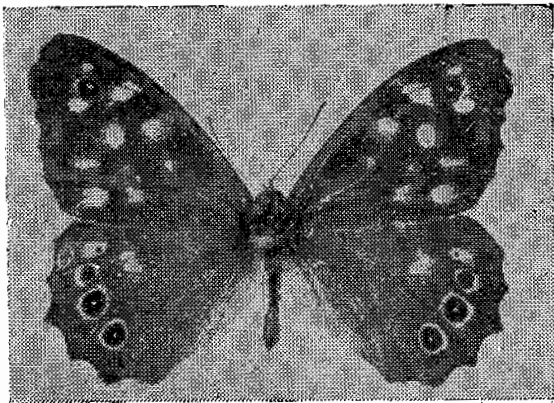
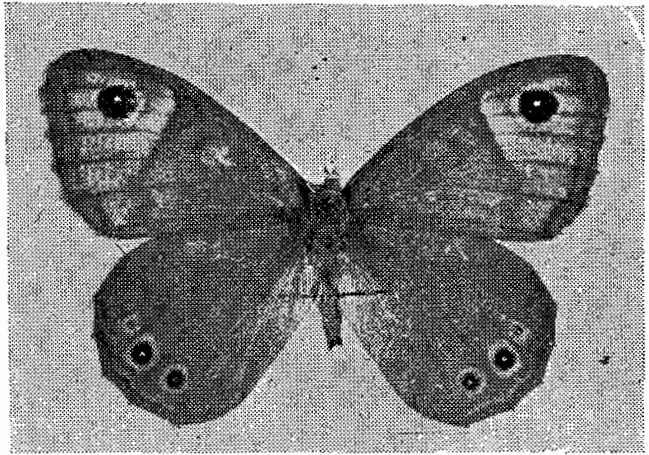
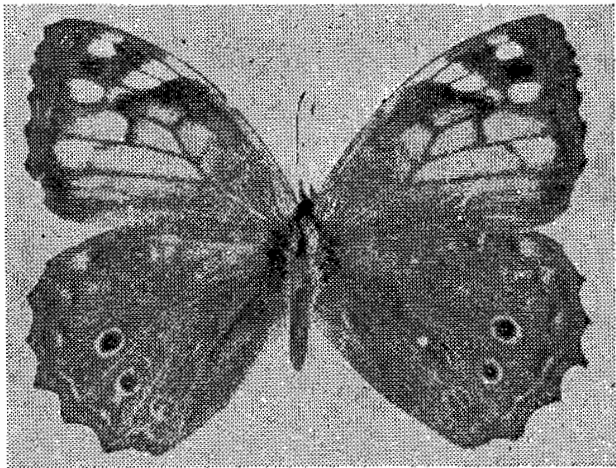
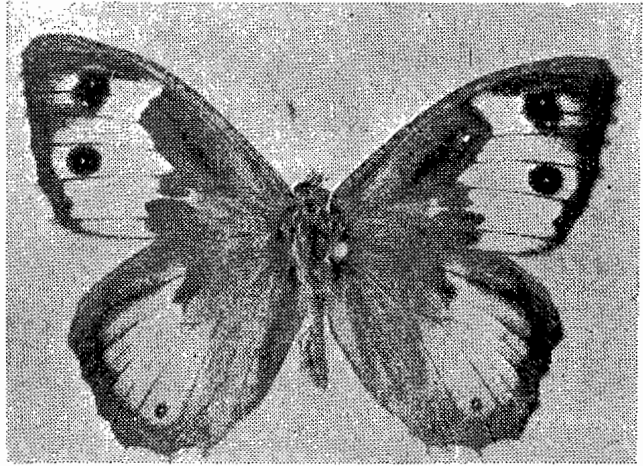
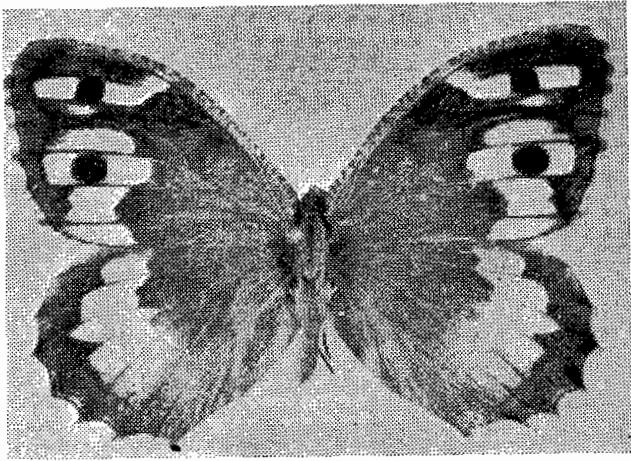


7. *Zegris eupheme* Esp. (No. 16)
8. *Gonepteryx farinosa* Zell. (No. 19) ♀
9. *Erebia afer dalmata* God. (No. 22)
10. *Erebia pronœ* Esp. (No. 23) ♂
11. *Agapetes melenargia* L. (No. 24)
12. *Hipparchia fatua ? sichaea* Led. (No. 28) ♀

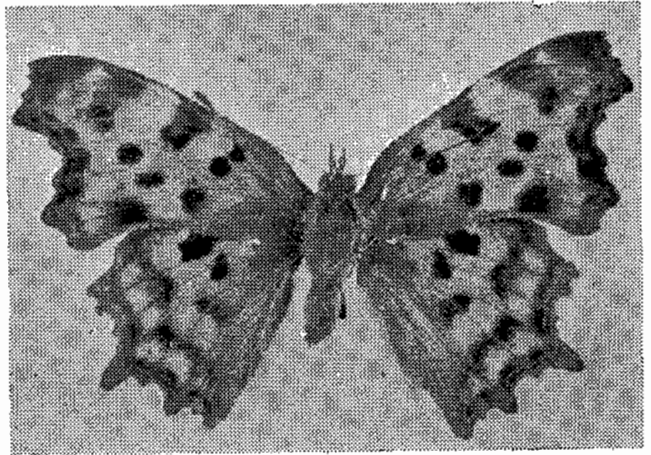
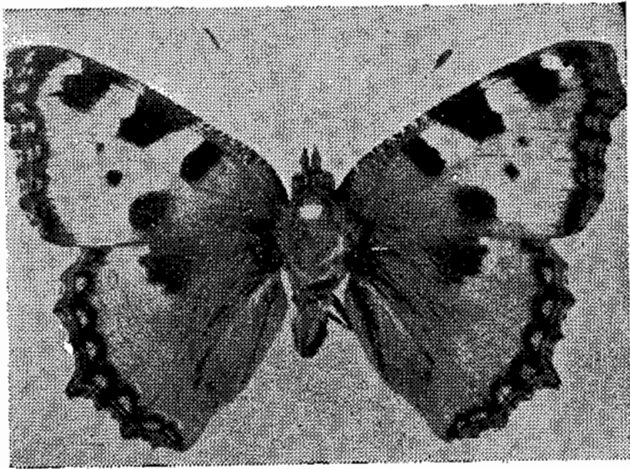
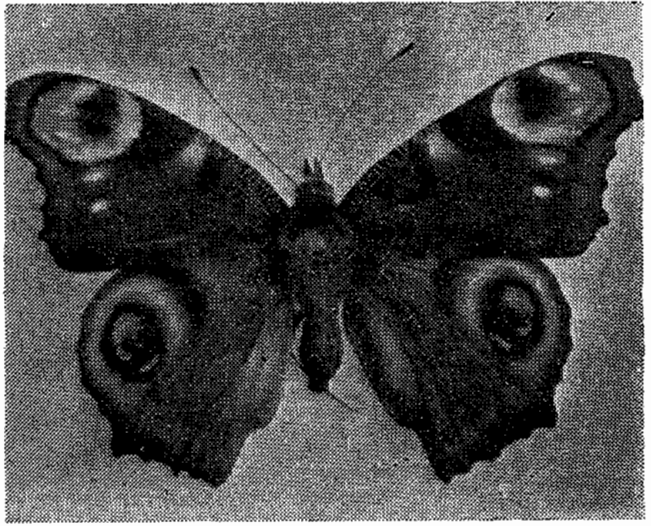
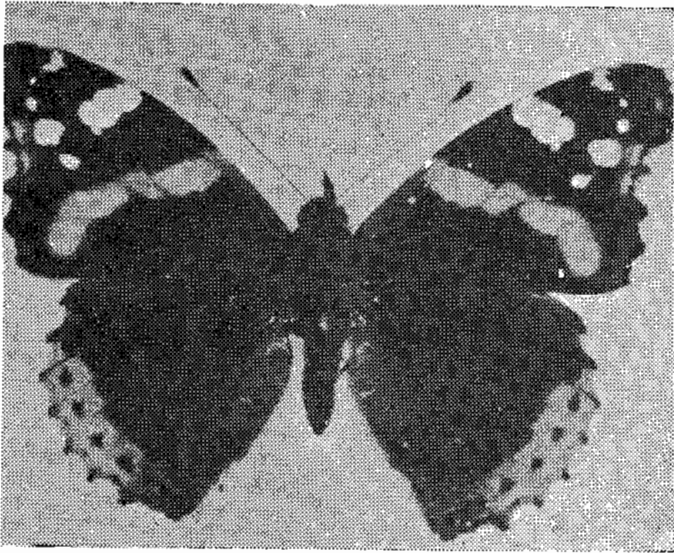
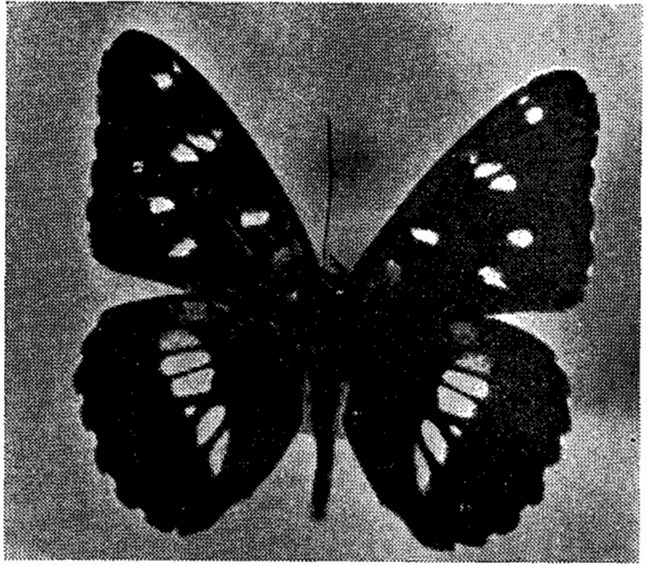
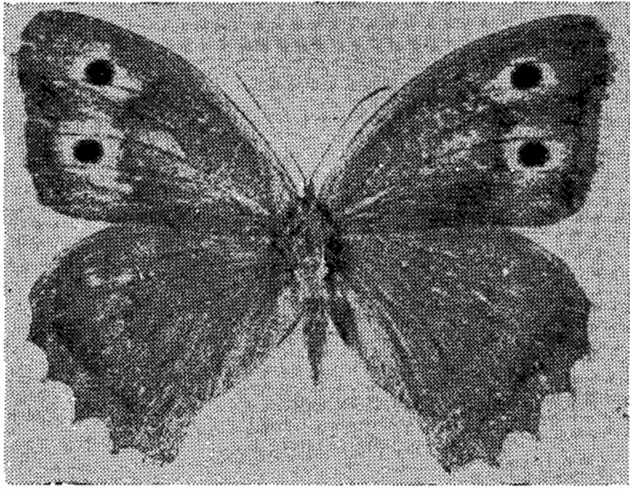


13. *Karanasa anthe* Och. (No. 31)
14. *Karanasa anthelea* Hbn. (No. 32)
15. *Dira roxelana* Cr. (No. 39) ♀
16. *Pararge maera* L. (No. 40) ♀
17. *Dira aegeria egerides* Stgr. (No. 41) ♂
18. *Dira megera megaerina* H.S. (No. 42) ♂



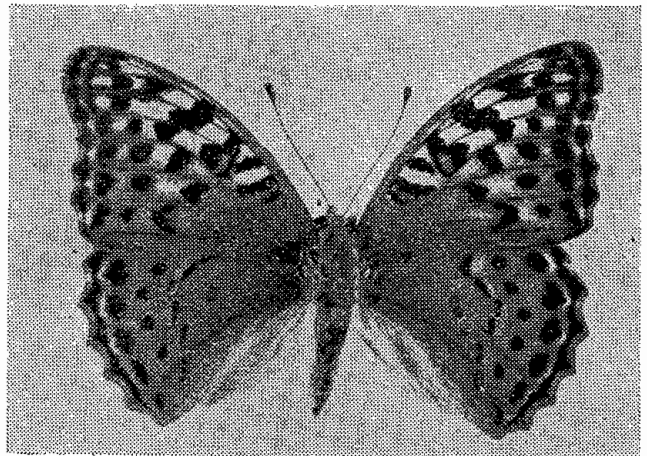
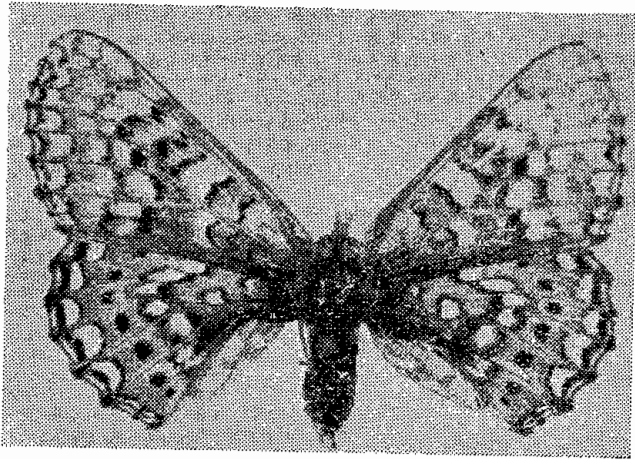
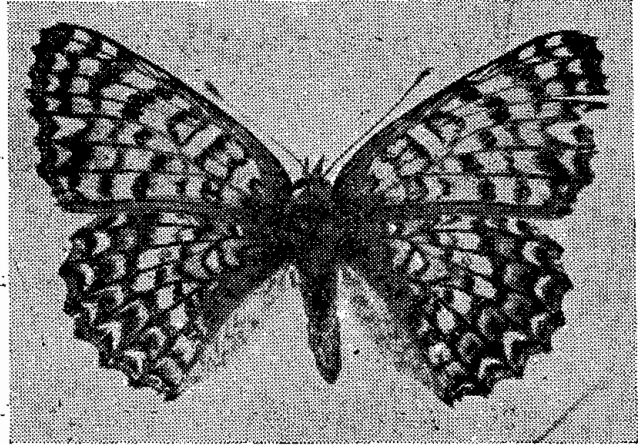
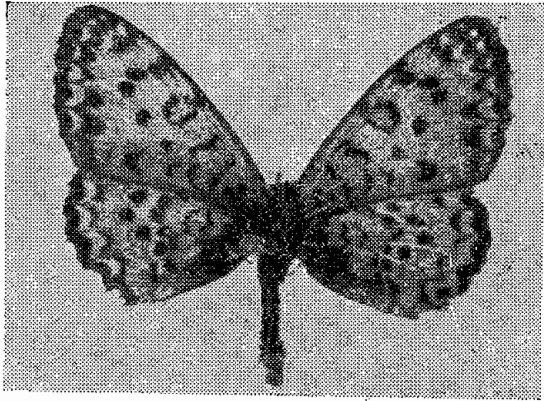
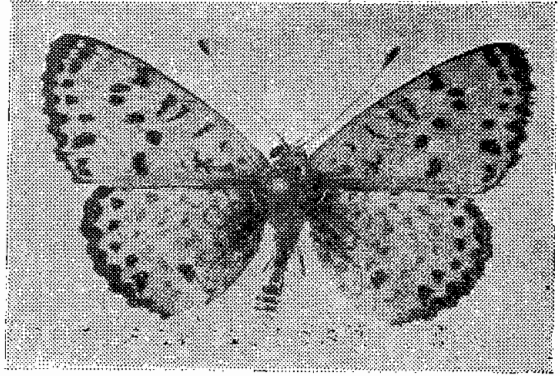
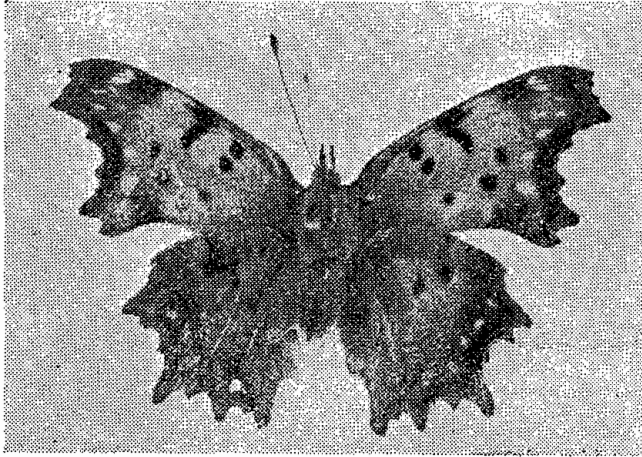




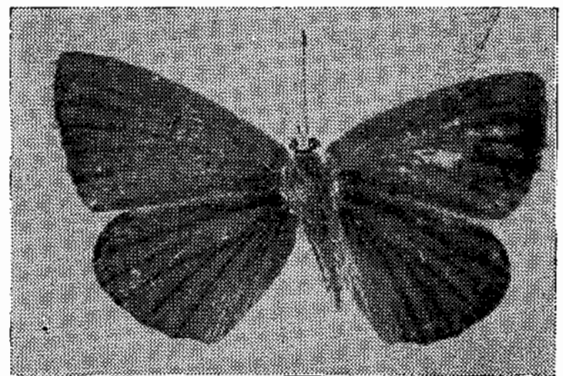
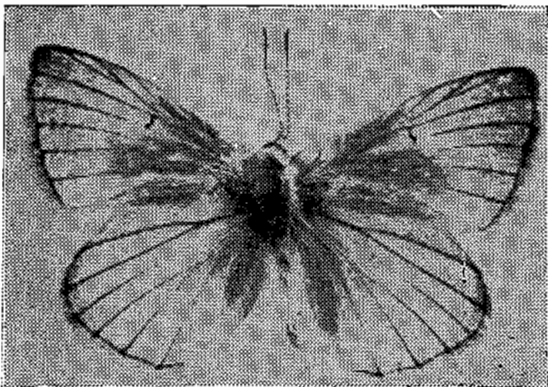
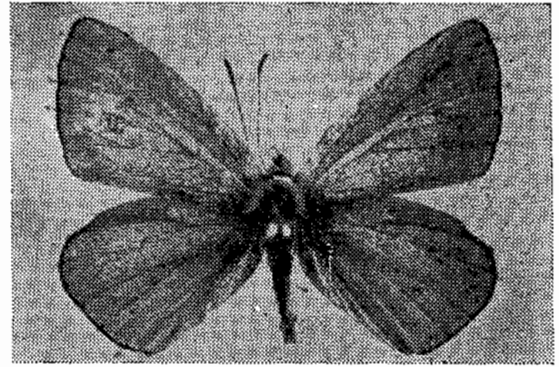
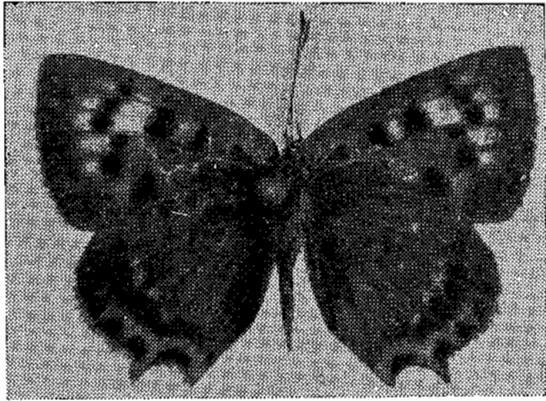
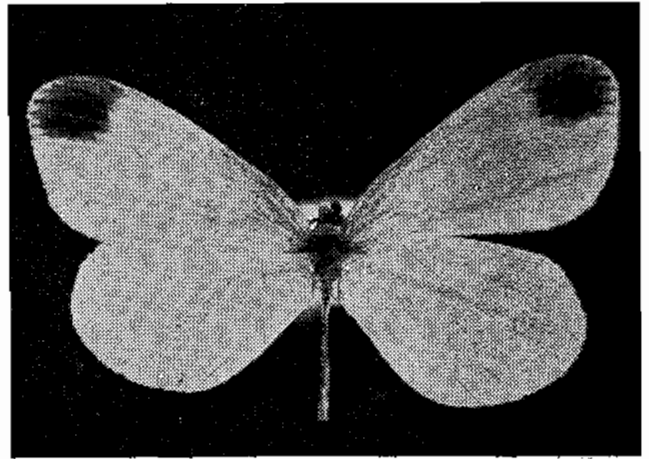
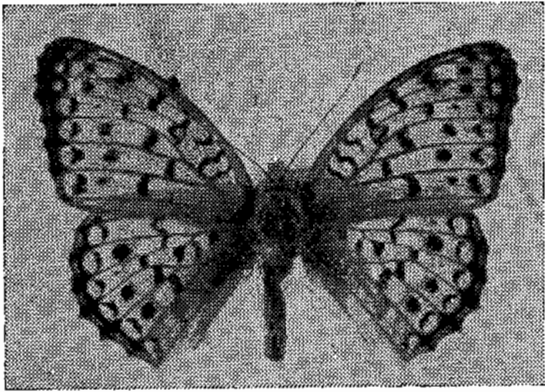


25. *Poligonia egae* Cr. (No. 57)
26. *Melitaea didyma dalmatina* Stgr. (No. 58) ♂
27. *Melitaea trivia pseudodidyma* Reb. (No. 59) ♂
28. *Melitaea phoebe* W.V. (No. 60) ♂  
+
29. *Euphydrias desfontainii orientalis* H. S.  
(No. 62) ♂  
+
30. *Argynnis maia* Cr. (No. 64)





31. *Fabriciana niobe orientalis* Alph. (No. 65)
32. *Leptidia sinapis* L. (No. 95)
33. *Lycaena phlaeas* L. (No. 70) ♂
34. *Lysandra bellargus* Rott. (No. 72) ♂
35. *Agrodietus dolus* Hbn. (No. 74) ♂
36. *Agrodietus dolus* Hbn. (No. 74) ♀



37. *Thymelicus thaumas* Hfn. (No. 86) ♂

38. *Thymelicus lineola* O. (No. 87)

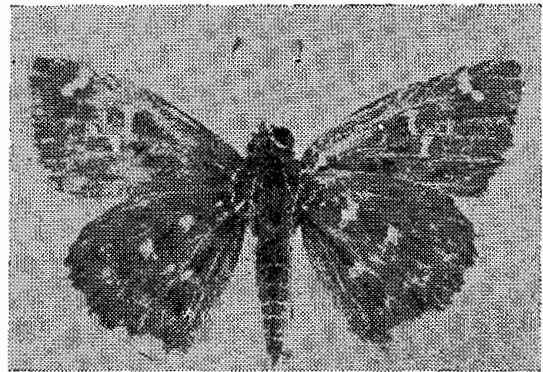
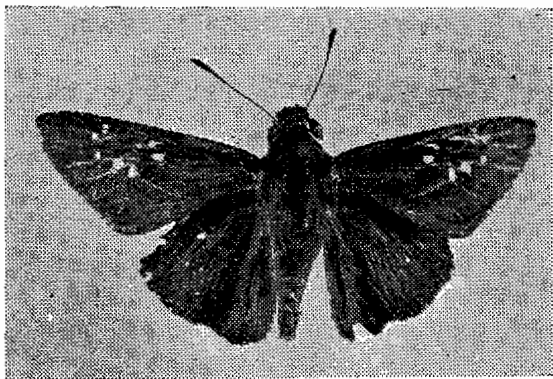
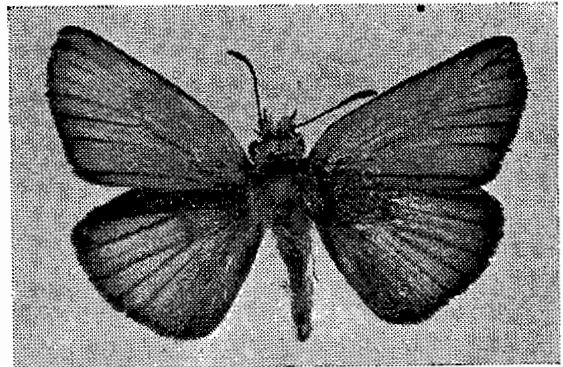
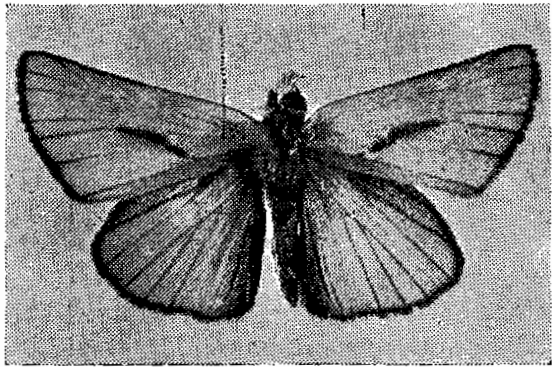
39. *Gegenes mathias* F. (No. 89)

40. *Reverdinus alchymillae* Hbn. (No. 91)

---

Yazar fotoğraflar için Ankara Ziraî Mücadele Enstitüsü Müdürlüğüne  
ve müessese fotoğrafçısı B. Kâni Ünal'a teşekkür eder,





100