



## Effects of Sodium Nitroprusside and Gibberellic Acid Applications on Direct Germination of Fully Mature Grapevine Seeds and Seedling Growth

Zeki Kara<sup>1</sup>, Osman Doğan<sup>1,\*</sup>, Kevser Yazar<sup>1</sup>

<sup>1</sup>Selcuk University Faculty of Agriculture Department of Horticulture 42130 Konya, Turkey

### HIGHLIGHTS

- The in vivo germination protocol of fully mature grapevine seeds just after harvest was determined.
- The grapevine seeds separated from the berries just after harvest, before drying, were germinated in vivo.
- Drying the mature seeds reduced the germination rate.
- NO generator Sodium nitroprusside (SNP) and GA<sub>3</sub> increased germination and plant transformation rates and vegetative development parameters of seedlings.
- Genotypic differences in germination rates and vegetative growth characteristics were significant.

### Abstract

Seeds are widely used in grapevine breeding to obtain new genotypes; however, physical and physiological constraints in seeds reduce the germination rate and slow down breeding programs. The germination rate of mature grapevine seeds and in vitro methodologies that shorten the process of obtaining seedlings have been described. Still, the early germination of fully mature seeds in vivo has not been adequately studied. In this study, the effects of Sodium nitroprusside (SNP) and Gibberellic Acid (GA<sub>3</sub>) on germination stimulation were examined. At the same time, fresh (F) and dried (D) seeds were used to determine the drying effect of the seeds separated from the fruit flesh. The effects of control (pure water), SNP (100–500 µM), and GA<sub>3</sub> (1–5 gL<sup>-1</sup>) 24-hour immersion applications on seed germination, vegetative development, and seedling development were evaluated. While SNP (F-500 µM SNP in cv. Gök Üzümlü, 77.94%) and GA<sub>3</sub> (F-GA<sub>3</sub> 1 gL<sup>-1</sup> in cv. Royal 70.87%) applications increased germination and plant transformation rates, the effects of applied dose were relatively limited. GA<sub>3</sub> treatments promoted germination more in cv. Royal and SNP in cv. Gök Üzümlü. GA<sub>3</sub> (2.5 gL<sup>-1</sup>) and SNP (500 µM) applications also increased shoot growth and leaf chlorophyll contents. The technique of SNP and GA<sub>3</sub> applications can contribute to and accelerate breeding programs carried out with seed-producing vines, as it provides higher germination rates and seed germination and seedling production immediately after the fully mature clusters are harvested.

**Keywords:** Vine; fully matured seed; seedling; germination; stimulants

**Citation:** Kara Z, Doğan O, Yazar K (2025). Effects of sodium nitroprusside and gibberellic acid applications on direct germination of fully mature grapevine seeds and seedling growth. *Selcuk Journal of Agriculture and Food Sciences*, 39(2), 268-279. <https://doi.org/10.15316/SJAIFS.2025.023>

\*Correspondence: [osmandogan@selcuk.edu.tr](mailto:osmandogan@selcuk.edu.tr)

Received date: 12/11/2024

Accepted date: 25/03/2025

Author(s) publishing with the journal retain(s) the copyright to their work licensed under the CC BY-NC 4.0.

<https://creativecommons.org/licenses/by-nc/4.0/>

## 1. Introduction

Vines are commercially propagated by grafting and cuttings. Seed propagation is used in breeding programs to obtain new hybrids (Ritschel et al. 2014; dos Santos et al. 2019). Dormancy of grapevine seeds results in low germination rates, which disrupts grapevine breeding programs (Ellis et al. 1983; Maeda et al. 1985; Pommer et al. 1988; Conner 2008; Generoso et al. 2019;). Physical dormancy in grapevine seeds is due to the waterproof seed coat (Eriş and Düring 1978; Conner 2008), and it is associated with high endogenous abscisic acid (ABA) levels (Rajasekaran et al. 1982). Cold stratification can lead to a decrease in ABA levels. To eliminate dormancy in grape seeds, stratification is done for 75-90 days in a humid environment at temperatures between 0-5 °C (Ellis et al. 1983; Pommer et al. 1988; Selim et al. 2016; do Brasil and Brasília 2016; Çelik 2014) or with GA<sub>3</sub> pre-applications (Kang 1968; Kachru 1969; Manivel and Weaver 1974; Selim et al. 1981) where the benefits of cold stratification can be combined (Kachru 1969; Manivel and Weaver 1974; Pal and Singh 1976; Chohan and Dhillon 1976; Selim et al. 1981; Ergenoglu et al. 1996) have been reported. Recommended GA<sub>3</sub> doses are 0.05 - 8 gL<sup>-1</sup> and application time varies from 15 seconds to 24 hours (Kang 1968; Manivel and Weaver 1974; Selim et al. 1981; Kara et al. 2020). These methods require significant time, and germination rates often remain below 50%.

Levels of plant growth regulators are effective in stimulating germination or breaking dormancy in seeds, especially GA inactivates ABA in dormant seeds, accelerates the hydrolysis of starch and storage proteins, and stimulates seed germination (Cardemil and Reinero 1982; Hopkins 1995).

Endogen GA<sub>3</sub> application to seeds accelerates germination by increasing  $\alpha$ -amylase activity (Wurzbürger et al. 1974), initiates germination by replacing environmental effects such as stratification (Özen and Onay 1999), light and temperature, and directly stimulates embryo growth by providing hydrolysis events in the endosperm (Ünal et al. 2004), ensures elongation by enlarging the cells in the elongation zone (Hopkins 1995). Significant differences have been determined between germination rates and processes depending on factors of applications and grapevine genotypes (da Costa Júnior et al. 2022; Ergenoglu et al. 1996).

Reactive oxygen species (ROS) play an important role in regulating germination under both normal and stress conditions. ROS accumulation is required to break seed dormancy in many plant species (Bailly et al. 2008; Gniazdowska et al. 2010a; Leymarie et al. 2012). H<sub>2</sub>O<sub>2</sub>, a ROS, accumulates more in seeds germinated in saline conditions (Lee et al. 2010; Lin et al. 2012). Hydrogen peroxide mediates the interaction between ABA and GA<sub>3</sub> in the stimulation of seed germination in *Arabidopsis* (Leymarie et al. 2012).

Nitric Oxide (NO) acts as a signaling molecule involved in the control and regulation of various plant responses to environmental stresses at almost all stages of development (Delledonne et al. 1998; Durner and Klessig 1999; García-Mata and Lamattina 2001; Beligni et al. 2002; Zhao et al. 2004; Shi et al. 2005; Zhao et al. 2007; Wang et al. 2009), seed germination, root development, cell senescence and stomatal closure (García-Mata et al. 2003) depending on the concentration and the metabolic state in which it is involved, protective or it is also toxically involved in apoptosis (Beligni and Lamattina 2002). The protective effects of NO have been associated with the regulation of ROS levels and toxicity, which are involved in lipid peroxidation (Sharpe et al. 2003; Hung and Kao 2004; Hummel et al. 2006).

NO protects cell subunits of membrane-bound enzymes and substrates by regulating tissue antioxidant capacity and lipid peroxidation (Duan et al. 2007), often providing its regulatory activity through tight coordination with other molecules such as ROS (Wang et al. 2009; Gniazdowska et al. 2010b). Cyanide (CN) is the primary volatile dormancy-breaking compound produced by NO. The donor SNP (Bethke et al. 2006) stimulates germination by enabling ethylene production (Gniazdowska et al. 2007; Ahlfors et al. 2009; García et al. 2011; Soltys et al. 2012) under various conditions such as ozone stress and ion deficiency (Gniazdowska et al. 2010b; Liu et al. 2010). However, there is a lack of information on the effects of NO on the germination of fully matured grape seeds. Although low (10<sup>-4</sup>-10<sup>-8</sup> M) doses of SNP significantly increased germination percentage, root length and shoot control, high doses (10<sup>-3</sup>-1 M) inhibited seed germination, root and shoot growth, and maximum inhibition was recorded when seeds were soaked in 1 M SNP. 10<sup>-5</sup> M SNP provided significant increases in germination rate, root and shoot length (Hayat et al. 2014).

To accelerate breeding programs, *in vitro*, germination of immature embryos has been used in different species such as grapevine (Val et al. 2010; Generoso et al. 2019; Costa Júnior et al. 2022), pepper (Walter et al. 2018), palm (Mbi et al. 2016). For the same purpose, the production of seedlings from immature embryos has also been studied (Yang et al. 2007; Tian et al. 2008; Tang et al. 2009; Li et al. 2015; Li et al. 2020). However, there is a paucity of studies investigating the early germination of mature grapevine seeds *in vivo*.

We aimed to develop methodologies that increase the germination rate of fully matured grapevine seeds and shorten the process of obtaining seedlings. For this purpose, we examined the effects of GA<sub>3</sub> and SNP (NO donor) applications on the promotion of germination in both F and D seeds of cv. Gök Üzümleri and cv. Royal immediately after harvest.

## 2. Materials and Methods

In the experiment, two grape varieties (cv. Gök Üzümleri and cv. Royal), two seed types (F and D), (0 (Control), three SNPs (100 µM, 250 µM, and 500 µM), and three GA<sub>3</sub> (1 gL<sup>-1</sup>, 2.5 gL<sup>-1</sup> and 5 gL<sup>-1</sup>) was applied by immersion for 24 hours. In the control, the seeds were soaked in pure water for 24 hours. The seeds were germinated in petri dishes in an environment adjusted to 25°C temperature and 16:8 h (dark: light) photoperiod.

Germinated seeds were grown by planting them in 8\*8\*10 cm plastic containers in a 3:1 peat: perlite mix media. The study was conducted in a randomized parcel trial design with three replications. Variance analysis was performed on the numerical data obtained in the SPSS 17.0 statistical program and compared with the Student's t-test at the p=0.05 significance level. The effects of pre-germination treatments on seedling development were evaluated with three-way ANOVA.

In the experiment, the seeds of cv. Gök Üzümleri (autochthonous variety of Konya Türkiye) and cv. Royal (Karistvala Kolkhuri × Muscat Hamburg) were taken from grapevines in the Selcuk University Faculty of Agriculture Collection and Used. Fully matured clusters of both grape varieties were harvested (August 25, 2021), the clusters were squeezed, the seeds were removed and washed to remove the fruit flesh, and the empty seeds were removed by dipping into water and excluded from the experiment (Olmo 1934). F seeds were forced to germinate by pre-treatments. To determine the effect of drying the seeds after harvest, the washed seeds were laid on drying papers in room temperature without direct sunlight, dried for 72 hours in room conditions, and then used in pre-germination applications as dried (D) seeds. Germination stimulating chemicals GA<sub>3</sub> (Cas No. 77-06-5) and SNP (Cas No: 13755-38-9) were obtained from Ciba-Geigy AG.

### 2.1. Effects on seed germination and plant transformation rates

When the root tips of the seeds germinated in petri dishes containing agricultural perlite reached approximately 2 mm in length, they were considered germinated and transferred to the growth medium. % germination values were determined by the ratio of germinated seeds to the number of seeds treated before germination. Among the plants that developed from germinated seeds planted in growing containers, those that formed their first true leaves were considered to have turned into plants, and their conversion rates to plants were determined by counting them.

### 2.2. Shoot length (cm) and diameter (mm)

The lengths of the seedlings grown for 70 days were measured with a tape measure, and the shoot lengths (cm), and the diameters were determined by measuring the distance between the 1st and 2nd nodes from two directions with a digital caliper.

### 2.3. Leaf area (cm<sup>2</sup>), fresh and dry weights (g)

The leaves in the middle 1/3 of the shoots were taken from each replicate and evaluated as leaf samples. Leaf areas were determined with the Photoshop portable (PS 12.1) package program. Fresh leaf weights were determined by weighing leaf samples. Leaf dry weight was determined by drying in an oven at 70 °C for 72 hours and weighing.

#### 2.4. Leaf chlorophyll content (SPAD value)

Chlorophyll contents of 3-4 leaves from the shoot tip of the seedlings were determined with a chlorophyll meter (SPAD-502, Minolta, Japan).

#### 2.5. Root fresh and dry weight (g)

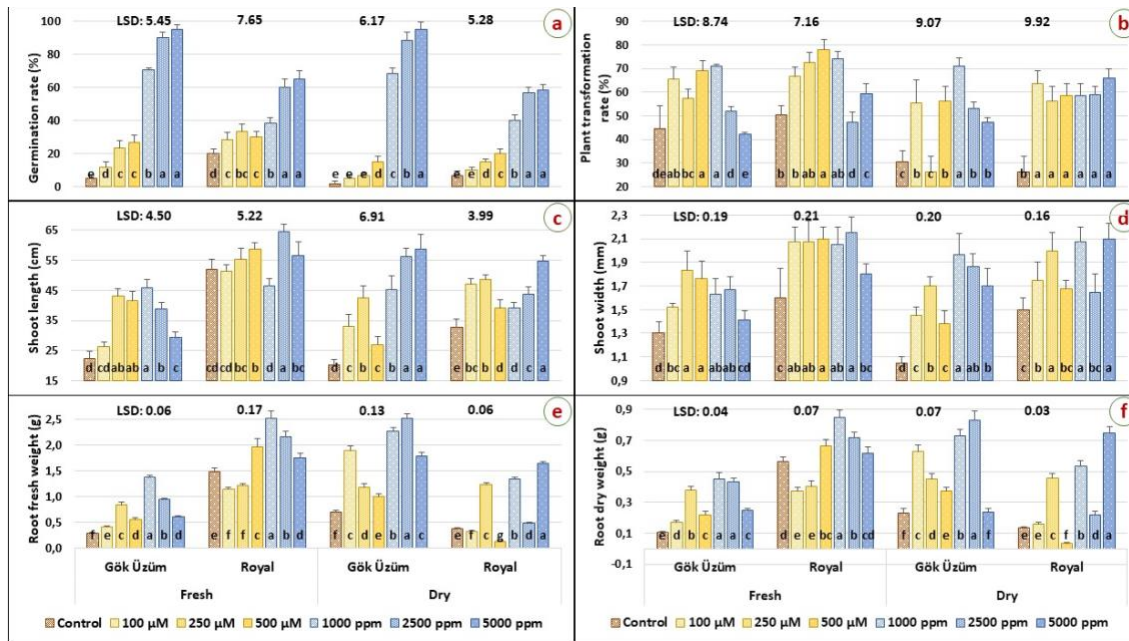
All roots of the seedlings grown in containers for 70 days were cut 3 cm away from the root branching point. After washing, the root fresh weights were determined (g), and these roots were kept in the oven (70 °C) for 72 hours and weighed to determine the root dry weights.

### 3. Results

#### 3.1. Germination and Seedling Rate (%)

GA<sub>3</sub> and SNP were applied to the F and D seeds of cv. Gök Üzümlü and cv. Royal immediately after harvest affected the germination rates (Figure 1a). While the lowest germination rate of cv Gök Üzümlü was recorded in the control, the highest germination rate was in the D-GA<sub>3</sub> 5 gL<sup>-1</sup> application. The highest germination rate in F seeds was obtained in the F-GA<sub>3</sub> 5 gL<sup>-1</sup> application.

In the D seeds in the cv. Royal, the lowest germination rate was in the control and the highest was in the D-GA<sub>3</sub> 5 gL<sup>-1</sup> application. In the F seeds, the lowest germination rate was in control, while the highest germination rate was again in the F-GA<sub>3</sub> 5 gL<sup>-1</sup> application (Figure 1a).



**Figure 1.** Effects of SNP and GA<sub>3</sub> treatments on germination rate (a), plant transformation (b), shoot length (c), shoot width (d), root fresh weight (e), and root dry weight (f). Statistically significant ( $p < 0.05$ ) differences were indicated by different letters on the bars. Standard error values are given one-sided on the bars.

GA<sub>3</sub> and SNP applications affected seedling emergence rates in both grapevine varieties (Figure 1b). Considering only the control, the seedling conversion rate of both cultivars in applications using F seeds was higher in the cv. Royal (50.23%) than in the cv. Gök Üzümlü (44.44%). In cv. Gök Üzümlü, the effects of SNP applications on the seedling rate were higher in F seeds than in D seeds. The highest seedling rates were determined in F-500 µM SNP ( $68.93 \pm 4.32$ ) and F-GA<sub>3</sub> 1 gL<sup>-1</sup> ( $70.87 \pm 0.96$ ) applications.

In the F seeds of the cv. Royal, all SNP applications increased the seedling conversion rates (Figure 1b), and the maximum value was obtained from the F-500 µM SNP application ( $77.94 \pm 4.34\%$ ). In the F-GA<sub>3</sub> 1 gL<sup>-1</sup> application, the seedling conversion rate was  $74.01 \pm 3.22\%$ . In general, in applications where F seeds are used,

the rate of transformation into plants is higher than that of D seeds. SNP applications increased the rate of transformation into plants more than GA<sub>3</sub> applications.

### 3.2. Shoot Length (cm) and Width (mm)

GA<sub>3</sub> and SNP applications to F and D seeds of both grape varieties before germination increased shoot growth, although it varied according to the applied dose (Figure 1c). In F seeds, the maximum shoot length was determined in the F-250  $\mu$ M SNP application ( $43.25 \pm 2.38$  cm) in the Royal cultivar, while it was  $42.52 \pm 4.03$  cm in the D-250  $\mu$ M SNP application in the Gök Üzümlü cultivar. This value was  $45.83 \pm 2.93$  cm in the F-GA<sub>3</sub> 1 gL<sup>-1</sup> application, and  $45.33 \pm 4.48$  cm in the D-GA<sub>3</sub> 1 gL<sup>-1</sup> application (Figure 1c).

The height of the seedlings developed from cv. Royal F-seeds were greater in all treatments using control, SNP, and GA<sub>3</sub> than in all treatments using D-seeds. In general, the shoot length of cv. Royal seedlings were longer than those of cv. Gök Üzümlü seedlings. The maximum shoot length was determined as  $58.57 \pm 2.40$  cm in the F-500  $\mu$ M SNP application and  $64.51 \pm 2.59$  cm in the F-GA<sub>3</sub> 2.5 gL<sup>-1</sup> application, while it was  $48.75 \pm 1.25$  cm in the D-250  $\mu$ M SNP application and  $54.67 \pm 2.02$  cm in the D-GA<sub>3</sub> 5 gL<sup>-1</sup> application.

GA<sub>3</sub> and SNP applications to the seeds of both grape varieties affected the shoot width (Figure 1d). Control and F-SNP applications increased shoot width. In D-seeds that were used, a thicker shoot width was obtained in the control and SNP treatments. In other words, shoot width remained weaker in D-GA<sub>3</sub> applications. All doses of both SNP and GA<sub>3</sub> applications supported shoot thickening. The maximum shoot width was  $2.15 \pm 0.13$  mm in the F-GA<sub>3</sub> 2.5 gL<sup>-1</sup> application, and  $2.08 \pm 0.13$  mm in the D-GA<sub>3</sub> 5 gL<sup>-1</sup> application in Royal.

### 3.3. Root Fresh and Dry Weight (g)

GA<sub>3</sub> applications increased the root fresh weight of seedlings developed from F-seeds and D-seeds of both grape varieties more than SNP. This increasing effect was more evident in those treated with D-GA<sub>3</sub>, but no significant change could be noticed with the increase in dose.

In the seedlings developed from cv. in Royal F-seeds, the highest fresh root weight ( $2.52 \pm 0.14$  g) was obtained from the F-GA<sub>3</sub> 1 gL<sup>-1</sup> application, while in the seedlings developed from the D-seeds, the highest value ( $1.65 \pm 0.04$  g) was obtained from D-GA<sub>3</sub> 5 gL<sup>-1</sup> application (Figure 1e).

While pre-germination applications to F and D seeds increased root dry weights, the highest values were in F-GA<sub>3</sub> 1 gL<sup>-1</sup>, D-GA<sub>3</sub> 2.5 gL<sup>-1</sup> and F-250  $\mu$ M SNP applications (Figure 1f).

In the cv. Royal F-seeds applications, F-100  $\mu$ M SNP and F-250  $\mu$ M SNP, gave lower root dry weight than the control ( $0.56 \pm 0.03$  g), while the highest value was obtained from the F-GA<sub>3</sub> 1 gL<sup>-1</sup> ( $0.85 \pm 0.05$  g) application. In the D seeds applications, the lowest root weight ( $0.04 \pm 0.00$  g), including the control ( $0.13 \pm 0.01$  g), was obtained from the D-500  $\mu$ M SNP application, while the highest value ( $0.75 \pm 0.04$  g) was recorded in the D-GA<sub>3</sub> 5 gL<sup>-1</sup> application.

### 3.4. Leaf Fresh and Dry Weight

The leaf dry weights of the seedlings developed from the cv. Gök Üzümlü F-seeds were higher in the control and SNP-applied ones. D-GA<sub>3</sub> applications increased fresh leaf weights in seedlings. While the fresh leaf weight was  $0.45 \pm 0.06$  g in the control of F-seeds, it was recorded as  $0.89 \pm 0.04$  g in the F-500  $\mu$ M SNP application. The fresh leaf weight was  $0.18 \pm 0.02$  g in the D-seeds control and  $0.84 \pm 0.08$  g in the D-GA<sub>3</sub> 2.5 gL<sup>-1</sup> application (Figure 2a).

The fresh leaf weight of the cv. Royal seedlings of F-seeds were determined as  $0.54 \pm 0.04$  g in the control,  $0.74 \pm 0.01$  g in the F-500  $\mu$ M SNP application, and  $0.94 \pm 0.06$  g in the F-GA<sub>3</sub> 2.5 gL<sup>-1</sup> application, while it was  $0.48 \pm 0.06$  g in the D-seeds control. D-500  $\mu$ M SNP and D-GA<sub>3</sub> in 2.5 gL<sup>-1</sup> applications were recorded as  $0.60 \pm 0.08$  g and  $0.69 \pm 0.03$  g, respectively (Figure 2a).

The effects of SNP and GA<sub>3</sub> applications on F and D seeds of both grape cultivars on leaf dry weight were significant and similar to fresh leaf weights (Figure 2b). In the cv. Gök Üzümlü, the lowest ( $0.050 \pm 0.008$  g) leaf dry weight was determined in the F-GA<sub>3</sub> 5 gL<sup>-1</sup> application, which was also below the control. While the lowest leaf dry weight of this variety was determined as  $0.026 \pm 0.004$  g in the D-seeds control, it was  $0.132 \pm 0.021$  g and  $0.168 \pm 0.011$  g in D-SNP 500  $\mu$ M and D-GA<sub>3</sub> 2.5 gL<sup>-1</sup> applications, respectively (Figure 2b).

The dry leaf weight of the cv. Royal seedlings developed from F-seeds was  $0.087 \pm 0.005$  g (F-250  $\mu$ M SNP) and  $0.194 \pm 0.011$  g (F-GA<sub>3</sub> 2.5 gL<sup>-1</sup>), and in D-seeds, it was  $0.098 \pm 0.015$  g (control) and  $0.147 \pm 0.006$  g (D-GA<sub>3</sub> 2.5 gL<sup>-1</sup>) and no significant change could be determined between applied doses (Figure 2b).

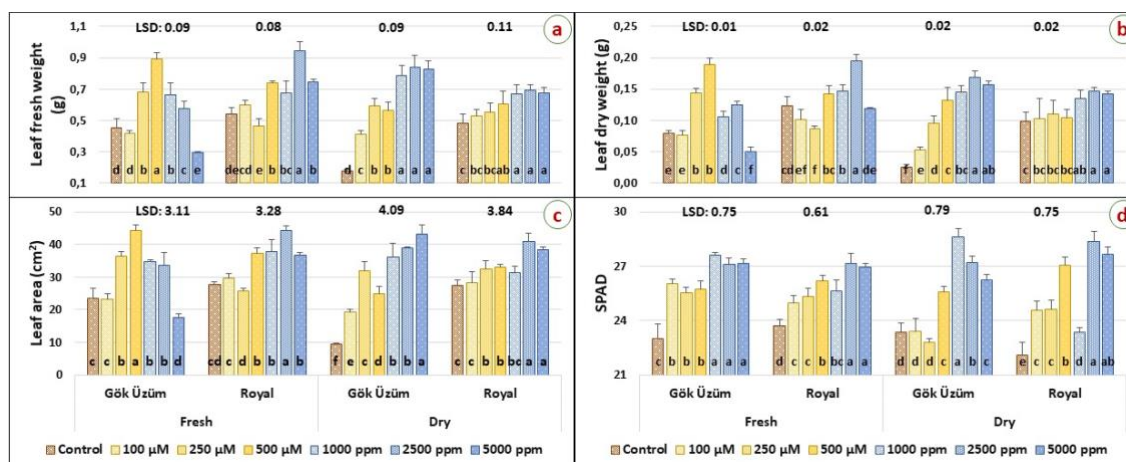


Figure 2. Effects of SNP and GA<sub>3</sub> treatments on leaf fresh weight (a), leaf dry weight (b), leaf area (c), and leaf chlorophyll content (SPAD value) (d). Statistically significant ( $p < 0.05$ ) differences were indicated by different letters on the bars. Standard error values are given one-sided on the bars.

### 3.5. Leaf Area

In the cv. Gök Üzüml F and D seeds, 250  $\mu$ M and 500  $\mu$ M SNP, GA<sub>3</sub> 1 gL<sup>-1</sup> and GA<sub>3</sub> 2.5 gL<sup>-1</sup> applications increased the leaf area (Figure 2c). In the cv. For Royal F and D seeds, the highest leaf area was obtained from the D-GA<sub>3</sub> 2.5 gL<sup>-1</sup> application. Only in the F 250  $\mu$ M SNP application, the average leaf area remains below control (Figure 2c).

### 3.6. Leaf Chlorophyll Content (SPAD Value)

SNP and GA<sub>3</sub> applications increased leaf chlorophyll content in the cv. Gök Üzüml F-seeds seedlings (Figure 2d), and in the D-seeds seedlings, the highest leaf chlorophyll content was obtained by D-GA<sub>3</sub> 1 gL<sup>-1</sup> application. In both cultivars F and D-seeds applications, GA<sub>3</sub> increased leaf chlorophyll content more than SNP, but the effects of dosages were not clear.

### 3.7. Effects of Pre-applications on Germination and Seedling Development

The effects of pre-germination treatments on germination and seedling development were examined by genotype (two grape cultivars), use of seeds in fresh (F) and dried (D), and pre-germination treatments (0 (Control), three SNPs (100  $\mu$ M, 250  $\mu$ M, and 500  $\mu$ M), and three GA<sub>3</sub> (1 gL<sup>-1</sup>, 2.5 gL<sup>-1</sup>, and 5 gL<sup>-1</sup>) data were evaluated by three-way analysis of variance (Table 1). In the germination rate, genotype\*drying\*application was insignificant, other parameters and the relationships between them were important. In the seedling conversion rate, genotype\*drying was unimportant, other parameters and the relationships between them were important. All parameters examined and the relationships between them regarding shoot length and root dry weight were important.

In assessing effects on shoot width, genotype\*treatment was unimportant. Other parameters evaluated in this context and the relationships between them were important. In terms of root and leaf fresh weight, drying was unimportant, other parameters and the relationships between them were important. In leaf dry weight evaluation, drying and genotype\*drying were insignificant, other parameters and the relationships between them were important. In leaf area evaluation, genotype\*drying was unimportant, other parameters and their relationships were important. In the evaluation of leaf chlorophyll content effects, genotype was unimportant, while other parameters and their relationships were important. When the applications were evaluated as a whole, SNP and GA<sub>3</sub> applications applied to F and D seeds before germination increased the germination rate and plant transformation rates in the seeds of both grape cultivars and generally encouraged seedling development.



**Table 1.** Three-way Anova for relationships between treatments

	Germination rate	Plant transformation rate	Shoot length	Shoot width	Root fresh weight	Root dry weight	Leaf fresh weight	Leaf dry weight	Leaf area	SPAD
Genotype (G)	0.000	0.000	0.000	0.000	0.000	0.000	0.000	0.000	0.000	0.192
Drying (D)	0.000	0.000	0.000	0.006	0.053	0.000	0.074	0.111	0.010	0.000
Application (A)	0.000	0.000	0.000	0.000	0.000	0.000	0.000	0.000	0.000	0.000
G*D	0.015	0.950	0.000	0.008	0.000	0.000	0.000	0.079	0.776	0.044
G*A	0.000	0.000	0.000	0.120	0.000	0.000	0.000	0.000	0.000	0.000
D*A	0.000	0.000	0.000	0.000	0.000	0.000	0.000	0.000	0.000	0.000
G*D*A	0.053	0.003	0.000	0.003	0.000	0.000	0.000	0.000	0.000	0.000

#### 4. Discussion

Since physical and physiological dormancy in grapevine seeds (Rajasekaran et al. 1982; Ellis et al. 1983; Maeda et al. 1985; Pommer et al. 1988; Conner 2008; Val et al. 2010; Generoso et al. 2019) reduces or delays seed germination (Generoso et al. 2019), GA<sub>3</sub> soaking and beak cutting (Wang et al. 2022), SNP and for 90 days of stratified seeds GA<sub>3</sub> application (Kara et al. 2020), for remove seeds from berries five weeks after flowering GA<sub>3</sub> and Kinetin applications (Pandey and Singh 1988), for removed immature zygotic embryos 80 days after flowering keeping them in 2.5 gL<sup>-1</sup> GA<sub>3</sub> + 55 °C water for 15 minutes and then keeping them at room temperature for 24 hours (Zhang et al. 2023) were recommended.

In a previous study, cv. Romi seeds that were intended to germinate immediately after harvest did not germinate. When the seeds were stratified at 5 - 18 °C for 30 - 120 days, as the stratification time increased and at the same time the dose of GA<sub>3</sub> was increased from 0.05 gL<sup>-1</sup> to 5 gL<sup>-1</sup> the germination rate increased. By soaking in pure water for 24 hours, the germination rate reached 4.2% recorded (Selim et al. 1981).

Ergenoglu et al. (1996), reported that stratification at 5 °C for 21 days increased the germination rate and shortened the germination time and that GA<sub>3</sub> applications caused excessive elongation and poor development in seedlings. In previous studies, stratification was accepted necessary to break dormancy in seeds (Ellis et al. 1983; Pommer et al. 1988), and the proposed methodologies were time-consuming and relatively low-yield (Ellis et al. 1983; Pommer et al. 1988; Conner 2008) and depends on the genotype (da Costa Júnior et al. 2022).

GA<sub>3</sub> applied to seeds generally increases germination. It promotes growth by increasing the plastids in the cell walls, converts carbohydrates into sugar, and reduces the pressure on the cell wall. Thus, it ensures water intake into the cell and cell elongation (Arteca 1996; Hopkins 1995). Moreover, GA<sub>3</sub> applications also promote the production of some hydrolase enzymes such as  $\alpha$ -amylase (Arif et al. 2008). Moreno et al. (2011) indicated that GA<sub>3</sub> promotes net carbon fixation and transport, promoting correct carbon allocation to roots and fruits. Dormancy was broken in *in vitro* GA<sub>3</sub> applications (Val et al. 2010; Generoso et al. 2019; da Costa Júnior et al. 2022), but in our study, *in vivo* grapevine seeds germination was achieved at high rates (in cv. Gök Üzümlü F control 5.00±1.67, in cv. Royal 20.00±2.89) with GA<sub>3</sub> and (in cv. Gök Üzümlü GA<sub>3</sub> 5 gL<sup>-1</sup> 95.00±2.89, in cv. Royal GA<sub>3</sub> 5 gL<sup>-1</sup> 65.00±5.00) SNP (in cv. Gök Üzümlü SNP 500  $\mu$ M 26.67±4.41, in cv. Royal SNP 250  $\mu$ M 33.33±4.41) pre-applications to fresh seeds.

Grape seeds have a physical and physiological rest requirement (Cadot et al. 2006; Val et al. 2010; Çelik 2014; Generoso et al. 2019; Kara et al. 2020; Wang et al. 2022). Since physiological dormancy is not found in the embryo, but in the tissues surrounding it (da Costa Júnior et al. 2022), it was possible to break dormancy with SNP and GA<sub>3</sub> applications immediately after harvest, before completely drying the seeds.

We broke physical and physiological dormancy in *in vivo* culture with SNP and GA<sub>3</sub> applications to seeds with mature zygotic embryos in two grape cultivars immediately after harvest. We obtained a high rate of germination and seedlings from matured grape seeds in the harvest season. Both factors are known to naturally inhibit germination. The decrease in germination rate even after 72 hours of drying proved by this.

In the control of F and D seeds, 24-hour of soaking in water contributed to overcoming both physical and physiological barriers.

There is a great need for new varieties of cultivated plant species that can be produced in a short time. These new genotypes, the products of breeding programs, may be more resistant to biotic and abiotic factors, and productive and high-quality varieties. Methods that will accelerate this process will contribute to the acceleration of plant breeding.

Our results may be a good indication that matured seeds can be used for seed germination regardless of the cultivar or species of the *Vitis* genus. However, further studies with other species, hybrids, and varieties should be conducted for verification.

When our results were evaluated together, applications of NO donor SNP and GA<sub>3</sub> to grapevine F and D seeds immediately after harvesting increased germination and plant transformation rates. The effects of SNP and GA<sub>3</sub> dosage on germination and transformation into plants remained at relatively limited levels. GA<sub>3</sub> treatments promoted germination more compared to SNP. GA<sub>3</sub> and SNP applications positively affected shoot length and leaf chlorophyll content.

According to these results, GA<sub>3</sub> and SNP can be used to reduce losses in the process of converting seeds obtained through hybridization into plants, especially in grapevine breeding. With the protocol created in our study, a stable and repeatable method was presented that could prevent wasting time during the rest period for seed germination, which is especially necessary for grapevine breeding and other biotechnological studies.

## 5. Conclusions

In this study, the methodology for in vivo germination of fully matured grapevine seeds immediately after harvest was described. Although GA<sub>3</sub> promoted the germination of F and D seeds by approximately 40% even at the lowest application, this effect was more limited in the conversion rates to plants (55-65%).

Germination rates were higher in both grape varieties in treatments using F seeds. In D-GA<sub>3</sub> treatments, the germination rate was over 65% in the cv. Royal and over 95% in the cv. Gök Üzümlü. In mature seeds, drying after harvest reduced the germination rate.

The germination-stimulating effect of SNP treatments was significant, and this activity was higher in D seeds of both grape cultivars.

The stimulatory effect of SNP applications to F seeds was more evident in plant conversion rates, shoot length and diameter, leaf fresh weight, and leaf area.

This methodology increased the number of germinating seeds. By shortening the time required for germination and seedling production, the time required to obtain new grapevine varieties can be reduced and grapevine breeding programs can be accelerated.

---

**Author Contributions:** Conceptualization: Z.K., Data collection: O.D., Z.K., K.Y., Data analysis: Z.K., O.D., K.Y., Methodology Design: Z.K., O.D., Written and edited by: Z.K., O.D., K.Y.

**Funding:** This research received no external funding.

**Conflicts of Interest:** The authors declared no potential conflicts of interest with respect to the research, authorship, and/or publication of this article.

---

## References

Ahlfors R, Brosché M, Kangasjär J (2009). Ozone and nitric oxide interaction in *Arabidopsis thaliana*, a role for ethylene? A role for ethylene?. *Plant Signaling & Behavior* 4(9), 878-879. <https://doi.org/10.4161/psb.4.9.9428>



- Arif İ, Kaya MD, Gürbüz B (2008). Çemen *Trigonella foenum-graecum* L. ve kimyon *Cuminum cyminum* L. tohumlarının çimlenmesi üzerine tohum yaşı ve gaz uygulamalarının etkileri. *Tarım Bilimleri Dergisi* 14(01), 57-61.
- Arteca RN (1996). Plant growth substances: principles and applications. Springer Science & Business Media.
- Bailly C, El-Maarouf-Bouteau H, Corbineau F (2008). From intracellular signaling networks to cell death: the dual role of reactive oxygen species in seed physiology. *Comptes Rendus Biologies* 331(10), 806-814. <https://doi.org/10.1016/j.crvi.2008.07.022>
- Beligni M, Lamattina L (2002). Nitric oxide interferes with plant photo-oxidative stress by detoxifying reactive oxygen species. *Plant Cell Environ* 25(6), 737-748. <https://doi.org/10.1046/j.1365-3040.2002.00857.x>
- Beligni MV, Fath A, Bethke PC, Lamattina L, Jones RL (2002). Nitric oxide acts as an antioxidant and delays programmed cell death in barley aleurone layers. *Plant Physiology* 129(4), 1642-1650. <https://doi.org/10.1104/pp.002337>
- Cardemil L, Reinero A (1982). Changes of Araucaria araucana seed reserves during germination and early seedling growth. *Canadian Journal of Botany* 60(9), 1629-1638. <https://doi.org/10.1139/b82-211>
- Chohan G, Dhillon B (1976). Seed dormancy and endogenous growth substances in Anab-e-Shahi grapes. *Vitis* 15(1), 5-10.
- Conner PJ (2008). Effects of stratification, germination temperature, and pretreatment with gibberellic acid and hydrogen peroxide on germination of 'Fry' muscadine (*Vitis rotundifolia*) seed. *HortScience* 43(3), 853-856. <https://doi.org/10.21273/HORTSCI.43.3.853>
- Çelik M (2014). The effects of stratification periods and GA<sub>3</sub> (Gibberellic acid) applications on germination of seeds of some grape cultivars. *Turkish Journal of Agricultural and Natural Sciences* (Özel Sayı-1), 1118-1122.
- da Costa Júnior OD, Carvalho VS, Generoso AL, da Silva LM, de Sales RA, Viana AP (2022). Overcoming germination barriers through in vitro culture of mature zygotic embryos of grapevine cultivars. *Plant Cell Culture & Micropropagation* 18(18), e182-118. <https://doi.org/10.46526/pccm.2022.v18.182>
- Delledonne M, Xia Y, Dixon RA, Lamb C (1998). Nitric oxide functions as a signal in plant disease resistance. *Nature* 394(6693), 585-588. <https://doi.org/10.1038/29087>
- do Brasil F, Brasília D (2016). Ministério da agricultura, pecuária e abastecimento. *Secretaria de Defesa Agropecuária. Disponível em: Acesso em, 5(10):2016.*
- dos Santos PR, Viana A, Santos, EA, de Barros Walter FH, Riaz S, Walker AM (2019). Molecular genetic diversity in segregates of Vitis: implications for the breeding of grapevine aiming at resistance to *Pratylenchus brachyurus*. *Euphytica* 215, 1-10. <https://doi.org/10.1007/s10681-019-2403-8>
- Duan X, You Y, Su X, Qu H, Joyce D, Jiang Y (2007). Influence of the nitric oxide donor, sodium nitroprusside, on lipid peroxidation and anti-oxidant activity in pericarp tissue of longan fruit. *The Journal of Horticultural Science and Biotechnology* 82(3), 467-473. <https://doi.org/10.1080/14620316.2007.11512260>
- Durner J, Klessig DF (1999). Nitric oxide as a signal in plants. *Current Opinion in Plant Biology* 2(5), 369-374. [https://doi.org/10.1016/S1369-5266\(99\)00007-2](https://doi.org/10.1016/S1369-5266(99)00007-2)
- Ellis R, Hong T, Roberts E (1983). A note on the development of a practical procedure for promoting the germination of dormant seed of grape (*Vitis* spp.). *Vitis* 22(3), 211-219.
- Ergenoglu F, Tangolar S, Gök S (1996). The effects of some pre-treatments for promoting germination of grape seeds. *V Temperate Zone Fruit in the Tropics and Subtropics* 441, 207-212. <https://doi.org/10.17660/ActaHortic.1997.441.27>
- Eriş A, Düring H (1978). Hamburg misketi üzüm çeşidi çekirdeklerinde katlama uygulamaları ile değişen absizik asit (ABA) miktarının yüksek basınçlı sıvı Kromatografi cihazı ile saptanması. *Ankara Üniversitesi Ziraat Fakültesi Yıllığı* 27(3-4), 489-498.

- García MJ, Suárez V, Romera FJ, Alcántara E, Pérez-Vicente R (2011). A new model involving ethylene, nitric oxide and Fe to explain the regulation of Fe-acquisition genes in Strategy I plants. *Plant Physiology and Biochemistry* 49(5), 537-544. <https://doi.org/10.1016/j.plaphy.2011.01.019>
- García-Mata C, Graziano M, Pagnussat G (2003). Nitric oxide: the versatility of an extensive signal molecule. *Annual Review Plant Biology* 54, 109-136. <https://doi.org/10.1146/annurev.arplant.54.031902.134752>
- García-Mata C, Lamattina L (2001). Nitric oxide induces stomatal closure and enhances the adaptive plant responses against drought stress. *Plant Physiology* 126(3), 1196-1204. <https://doi.org/10.1104/pp.126.3.1196>
- Generoso AL, Viana AP, Carvalho VS, Costa Júnior ODD (2019). *In vitro* germination to overcome dormancy in seeds of 'Red Globe', 'Italia' and 'Niagara Rosada' grapes. *Revista Brasileira de Fruticultura* 41, e-495. <https://doi.org/10.1590/0100-29452019495>
- Gniazdowska A, Dobrzyńska U, Babińczyk T, Bogatek R (2007). Breaking the apple embryo dormancy by nitric oxide involves the stimulation of ethylene production. *Planta* 225(4), 1051-1057. <https://doi.org/10.1007/s00425-006-0384-z>
- Gniazdowska A, Krasuska U, Bogatek R (2010a). Dormancy removal in apple embryos by nitric oxide or cyanide involves modifications in ethylene biosynthetic pathway. *Planta* 232(6), 1397-1407. <https://doi.org/10.1007/s00425-010-1262-2>
- Gniazdowska A, Krasuska U, Dębska K, Andryka P, Bogatek R (2010b). The beneficial effect of small toxic molecules on dormancy alleviation and germination of apple embryos is due to NO formation. *Planta* 232(4), 999-1005. <https://doi.org/10.1007/s00425-010-1214-x>
- Hayat S, Yadav S, Alyemeni M, Ahmad A (2014). Effect of sodium nitroprusside on the germination and antioxidant activities of tomato (*Lycopersicon esculentum* Mill). *Bulgarian Journal of Agricultural Sciences*, 20(1), 140-144.
- Hopkins W (1995). Introduction to Plant Physiology. John Wiley and Sons, Inc, USA.
- Hummel SG, Fischer AJ, Martin SM, Schafer Q, Buettner GR (2006). Nitric oxide as a cellular antioxidant: a little goes a long way. *Free Radical Biology & Medicine* 40(3), 501-506. <https://doi.org/10.1016/j.freeradbiomed.2005.08.047>
- Hung KT, Kao CH (2004). Nitric oxide acts as an antioxidant and delays methyl jasmonate-induced senescence of rice leaves. *Journal of Plant Physiology* 161(1), 43-52. <https://doi.org/10.1078/0176-1617-01178>
- Kachru R (1969). Physiological studies on dormancy in grape seeds (*Vitis vinifera*) 1. On the naturally occurring growth substances in grapes and their changes during low temperature after ripening. *Vitis* 8, 12-18.
- Kang Y (1968). Effect of low temperature and growth regulators on germination of seeds of 'Tokay grapes' grapes. *Proceedings of the American Society for Horticultural Science*, 323-330. <https://doi.org/10.6964/JCSHS.196712.0066>
- Kara Z, Yazar K, Doğan O, Vergili E (2020). Sodium nitroprusside and gibberellin effects on seed germination and seedling development of grapevine (*Vitis vinifera* L.) cvs. Ekşi Kara and Gök Üzümleri. *Erwerbs-Obstbau* 62, 61-68. <https://doi.org/10.1007/s10341-020-00497-8>
- Lee S, Kim SG, Park CM (2010). Salicylic acid promotes seed germination under high salinity by modulating antioxidant activity in Arabidopsis. *New Phytologist* 188(2), 626-637. <https://doi.org/10.1111/j.1469-8137.2010.03378.x>
- Leymarie J, Vitkauskaitė G, Hoang HH, Gendreau E, Chazoule V, Meimoun P, Corbineau F, El-Maarouf-Bouteau H, Bailly C (2012). Role of reactive oxygen species in the regulation of Arabidopsis seed dormancy. *Plant & Cell Physiology* 53(1), 96-106. <https://doi.org/10.1093/pcp/pcr129>
- Li J, Wang X, Wang X, Wang Y (2015). Embryo rescue technique and its applications for seedless breeding in grape. *Plant Cell Tissue and Organ Culture* 120, 861-880. <https://doi.org/10.1007/s11240-014-0656-4>

- Li S, Li Z, Zhao Y, Zhao J, Luo Q, Wang Y (2020). New disease-resistant, seedless grapes are developed using embryo rescue and molecular markers. *3 Biotech* 10, 1-12. <https://doi.org/10.1007/s13205-019-1993-0>
- Lin Y, Wang J, Zu Y, Tang Z (2012). Ethylene antagonizes the inhibition of germination in Arabidopsis induced by salinity by modulating the concentration of hydrogen peroxide. *Acta Physiologiae Plantarum* 34(5), 1895-1904. <https://doi.org/10.1007/s11738-012-0989-8>
- Liu Y, Ye N, Liu R, Chen M, Zhang J (2010). H<sub>2</sub>O<sub>2</sub> mediates the regulation of ABA catabolism and GA biosynthesis in Arabidopsis seed dormancy and germination. *Journal of Experimental Botany* 61(11), 2979-2990. <https://doi.org/10.1093/jxb/erq125>
- Maeda JA, Pereira MdFDA, Terra MM (1985). Effect of storage conditions on the viability and dormancy of grape seeds. *Bragantia* 44, 245-254. <https://doi.org/10.1590/S0006-87051985000100023>
- Manivel L, Weaver R (1974). Effect of growth regulators and heat on germination of Tokay grape seeds. *Vitis* 12(4), 286-290.
- Mbi KT, Tonfack LB, Ntsefong GN, Mir BA, Ebongue GFN, Ngaha D, Njembele C, Namuene KS, Youmbi E (2016). Mature zygotic embryo rescue improves *in vitro* germination and seedling production in high value oil palm (*Elaeis guineensis* Jacq.) cultivars. *Industrial Crops and Products* 94, 445-453. <https://doi.org/10.1016/j.indcrop.2016.09.002>
- Moreno D, Berli FJ, Piccoli PN, Bottini R (2011). Gibberellins and abscisic acid promote carbon allocation in roots and berries of grapevines. *Journal of Plant Growth Regulation* 30, 220-228. <https://doi.org/10.1007/s00344-010-9186-4>
- Olmo H (1934). Empty-seededness in varieties of *Vitis vinifera*. *Proceedings of the American Society for Horticultural Science* 376-385.
- Özen H, Onay A (1999). Bitki büyüme ve gelişme fizyolojisi. Dicle Üniversitesi Basımevi. Diyarbakır, 166.
- Pal R, Singh R (1976). Effect of gibberellins GA<sub>3</sub>, GA+7 and GA13 on seed germination and subsequent seedling growth in Early Muscat grape (*Vitis vinifera*). *Vitis* 14(4), 265-268.
- Pandey S, Singh R (1988). Germination of seeds extracted from immature berries of grapes. *Indian Journal of Horticulture* 45(1 and 2), 56-60.
- Pommer CV, Maeda JA, Ribeiro IJA (1988). Capacidade de germinação e quebra de dormência em sementes de cultivares de videira. *Bragantia* 47, 143-157. <https://doi.org/10.1590/S0006-87051988000200001>
- Rajasekaran K, Vine J, Mullins M (1982). Dormancy in somatic embryos and seeds of *Vitis*: changes in endogenous abscisic acid during embryogeny and germination. *Planta* 154, 139-144. <https://doi.org/10.1007/BF00387907>
- Ritschel P, Maia JDG, Camargo UA, Zanús MC, Souza RTd, Fajardo TVM (2014). 'BRS MAGNA'-a novel grape cultivar for juice making, with wide climatic adaptation. *Crop Breeding and Applied Biotechnology* 14, 266-269. <https://doi.org/10.1590/1984-70332014v14n4c42>
- Selim H, Ibrahim F, Fayek M, El-Deen SS, Gamal N (2016). Effect of different treatments on germination of Romi red grape seeds. *Vitis* 20(2), 115-121.
- Sharpe MA, Robb SJ, Clark JB (2003). Nitric oxide and Fenton/Haber-Weiss chemistry: nitric oxide is a potent antioxidant at physiological concentrations. *Journal of Neurochemistry* 87(2), 386-394. <https://doi.org/10.1046/j.1471-4159.2003.02001.x>
- Shi S, Wang G, Wang Y, Zhang L, Zhang L (2005). Protective effect of nitric oxide against oxidative stress under ultraviolet-B radiation. *Nitric Oxide* 13(1), 1-9. <https://doi.org/10.1016/j.niox.2005.04.006>
- Soltys D, Rudzińska-Langwald A, Gniazdowska A, Wiśniewska A, Bogatek R (2012). Inhibition of tomato (*Solanum lycopersicum* L.) root growth by cyanamide is due to altered cell division, phytohormone balance and expansin gene expression. *Planta* 236(5), 1629-1638. <https://doi.org/10.1007/s00425-012-1722-y>

- Tang D, Wang Y, Cai J, Zhao R (2009). Effects of exogenous application of plant growth regulators on the development of ovule and subsequent embryo rescue of stenospermic grape (*Vitis vinifera* L.). *Scientia Horticulturae* 120(1), 51-57. <https://doi.org/10.1016/j.scienta.2008.09.018>
- Tian L, Wang Y, Niu L, Tang D (2008). Breeding of disease-resistant seedless grapes using Chinese wild *Vitis* spp.: I. *In vitro* embryo rescue and plant development. *Scientia Horticulturae* 117(2), 136-141. <https://doi.org/10.1016/j.scienta.2008.03.024>
- Ünal O, Gökceoğlu M, Topçuoğlu ŞF (2004). Antalya endemiği *Origanum* türlerinin tohum çimlenmesi ve özellikle çoğaltılması üzerinde araştırmalar. *Akdeniz University Journal of the Faculty of Agriculture* 17(2), 135-147.
- Val ADBd, Motoike SY, Alvarenga EM, Cecon PR (2010). Breaking the dormancy of Niagara Rosada seeds without stratification. *Revista Ceres* 57, 234-238. <https://doi.org/10.1590/S0034-737X2010000200015>
- Walter R, Carvalho VS, Generoso AL, Rodrigues R, Gravina GdA (2018). Cultivation of immature *Capsicum* spp. embryos for incompatible-crossing embryo rescue. *Acta Scientiarum Agronomy* 40. <https://doi.org/10.4025/actasciagron.v40i1.39474>
- Wang H, Liang X, Wan Q, Wang X, Bi Y (2009). Ethylene and nitric oxide are involved in maintaining ion homeostasis in *Arabidopsis* callus under salt stress. *Planta* 230(2), 293-307. <https://doi.org/10.1007/s00425-009-0946-y>
- Wang Z-L, Hui M, Shi, X-Q, Wu D, Wang Y, Han X, Cao X, Yao F, Li H, Wang H (2022). Characteristics of the seed germination and seedlings of six grape varieties (*V. vinifera*). *Plants* 11(4), 479. <https://doi.org/10.3390/plants11040479>
- Wurzbarger J, Leshem Y, Koller D (1974). The role of gibberellin and the hulls in the control of germination in *Aegilops kotschy* caryopses. *Canadian Journal of Botany* 52(7), 1597-1601. <https://doi.org/10.1139/b74-209>
- Yang D, Li W, Li S, Yang X, Wu J, Cao Z (2007). *In vitro* embryo rescue culture of F1 progenies from crosses between diploid and tetraploid grape varieties. *Plant Growth Regulation* 51, 63-71. <https://doi.org/10.1007/s10725-006-9148-9>
- Zhang J, Wu J, Hao X, Xie Y, Lv K, Xu W (2023). Establishment of a stable grape immature zygotic embryo-based genetic transformation system. *Scientia Horticulturae* 316, 112009. <https://doi.org/10.1016/j.scienta.2023.112009>
- Zhao L, Zhang F, Guo J, Yang Y, Li B, Zhang L (2004). Nitric oxide functions as a signal in salt resistance in the calluses from two ecotypes of reed. *Plant Physiology* 134(2), 849-857. <https://doi.org/10.1104/pp.103.030023>
- Zhao MG, Tian Q-Y, Zhang WH (2007). Nitric oxide synthase-dependent nitric oxide production is associated with salt tolerance in *Arabidopsis*. *Plant Physiology* 144(1), 206-217. <https://doi.org/10.1104/pp.107.096842>