



## Wetland flora diversity in Afyon (Türkiye): Karamuk, Eber-Akşehir and Karakuyu

Ümit SUBAŞI \*<sup>1</sup>, Fatoş ŞEKERCİLER SUBAŞI<sup>1</sup>  
ORCID: 0000-0002-8003-6227; 0000-0003-2085-2668

<sup>1</sup> Bıtey Eğitim Çevre ve Danışmanlık, Cevizlidere Mah. 1226 Sok No :14/3 06520 Ankara, Türkiye

### Abstract

**Purpose:** The aim of the present study is to examine the flora of Eber-Akşehir, Karakuyu and Karamuk Wetlands and their surrounding areas in Afyonkarahisar, Türkiye.

**Method:** The two-year study (2016–2018) examined plant samples collected from the region and identified taxa based on field observations and floristic evaluation.

**Findings:** A total of 491 taxa and 323 genera belonging to 93 families were determined. The largest families in terms of taxon number were Asteraceae (56), Fabaceae (39), and Lamiaceae (38). The Jaccard Similarity Index indicated the highest overlap between Eber-Akşehir and Karakuyu, while the lowest similarity was observed between Karakuyu and Karamuk wetlands. Phytogeographical analysis revealed 67 taxa (13.6%) Irano-Turanian, 56 taxa (11.4%) Euro-Siberian, 37 taxa (7.5%) East Mediterranean, 31 taxa (6.3%) Mediterranean, and 300 taxa (61.1%) cosmopolitan or of unknown phytogeographical origin.

**Conclusion:** The results highlight the floristic richness of the studied wetlands and emphasize their importance for biodiversity conservation in transitional biogeographical regions.

**Keywords:** wetland flora, karamuk, Eber-Akşehir, karakuyu

----- \* -----

## Afyon (Türkiye) sulak alan flora çeşitliliği: Karamuk, Eber-Akşehir ve Karakuyu

### Özet

**Amaç:** Bu çalışmanın amacı, Afyonkarahisar ilinde yer alan Eber-Akşehir, Karakuyu ve Karamuk Sulak Alanları ile çevresinin florasını incelemektir.

**Metod:** İki yıllık (2016–2018) arazi çalışmaları kapsamında bölgeden toplanan bitki örnekleri ve arazi gözlemleri değerlendirilmiştir.

**Bulgular:** Çalışma alanında 93 familyaya ve 323 cinsine ait toplam 491 takson belirlenmiştir. Takson sayısı bakımından en büyük familyalar Asteraceae (56), Fabaceae (39) ve Lamiaceae (38) olarak tespit edilmiştir. Jaccard Benzerlik İndeksi, Eber-Akşehir ile Karakuyu arasında en yüksek örtüşmeyi, Karakuyu ile Karamuk arasında ise en düşük örtüşmeyi göstermiştir. Fitocoğrafik dağılımda 67 takson (%13,6) İran-Turan, 56 takson (%11,4) Avrupa-Sibirya, 37 takson (%7,5) Doğu Akdeniz, 31 takson (%6,3) Akdeniz ve 300 takson (%61,1) kozmopolit veya fitocoğrafik bölgesi bilinmeyen grupta yer almıştır.

**Sonuç:** Elde edilen bulgular, çalışma alanındaki sulak alanların yüksek floristik çeşitliliğe sahip olduğunu ve geçiş biyocoğrafik bölgelerde biyolojik çeşitliliğin korunması açısından önemli olduğunu göstermektedir.

**Anahtar kelimeler:** sulak alan florası, karamuk, Eber-Akşehir, karakuyu

\* Corresponding author: +90 555 707 85 03; Fax.: +90 312 286 88 40; E-mail: subasi\_omit@hotmail.com

## 1. Introduction

Lake wetlands are important ecosystems due to their high biodiversity and the various services they provide, such as fisheries, flood control, wildlife habitat, and bird watching [1]. The Mediterranean basin is home to 19-26 million hectares of wetlands. 400 samples from Mediterranean wetlands showed that approximately 48% of natural wetland habitats were lost between 1970 and 2013. In the last decade, the surface area of natural coastal wetlands, such as wet meadows and marshes, has decreased by more than 10%, while artificial wetlands, such as ponds, reservoirs, and storage basins, have reportedly increased by more than 50%. Over the last 30 years, the area of inland surface waters in the Mediterranean Basin has increased by almost 13%, despite the continuous loss of natural wetlands [2]. This increase is partly due to the significant construction of dams and reservoirs in the region during this period [3]. In recent years, many Mediterranean countries have focused their water management policies on meeting the needs of important socio-economic sectors such as agricultural irrigation and drinking water demand. Nonetheless, this has resulted in the degradation of natural ecosystems, leading to a decrease in surface water within some natural wetlands and causing permanent open water areas to gradually dry out, transforming into temporary wetlands or even vanishing completely [4].

There are 122 registered natural wetlands in Türkiye, 14 of which are Ramsar Sites (184,487 ha), 59 are Wetlands of National Importance (869,697 ha), and 49 are Wetlands of Local Importance (107,021 ha), with a total area of 1,161,205 ha. Three natural wetlands in Afyon province are evaluated in the "Wetlands of National Importance" category. These wetlands, Akşehir Eber (117,779 ha), Karamuk (15,785 ha) and Karakuyu (12,625 ha), cover a total area of 146,189 ha and represent 12.5% of Turkey's natural wetlands [5].

The biodiversity of wetlands in Türkiye is declining due to factors such as the diversion or extraction of water for agricultural irrigation, unsustainable use of wetland resources like overfishing, the invasion of non-native species into the wetland ecosystem, and insufficient awareness of the impacts of climate change. The study area was chosen due to the rapid increase in renewable energy facilities such as wind and solar energy, as well as the growth of mining areas in recent years. The main objective of this study is to identify all species with conservation priority in this region and create a comprehensive list of all plants. The wetland basin in Afyon province has been the subject of several flora studies, but there has not been detailed documentation of the wetland flora in these three areas. This study aims to compare the floral diversity of nationally important wetlands and their surroundings in Afyon province and to determine the conservation needs of the existing flora.

## 2. Materials and methods

### 2.1. Study Area

Afyonkarahisar is located at an altitude of 1,034 meters above sea level, with coordinates of 38° 45'N latitude and 30° 32'E longitude. The total surface area of Afyonkarahisar is 14,295 km<sup>2</sup>, representing 1.8% of Turkey's total land area. Afyonkarahisar is situated within the Turkish Lakes Region. The winter season is characterised by cold temperatures and heavy snowfall, while the summer months are marked by high temperatures and low precipitation. The spring and autumn seasons are distinguished by the presence of rainfall. The precipitation that occurs in spring and autumn takes the form of rain. The temperature range is considerable, spanning a maximum of 39,8°C and a minimum of -27°C. The annual average precipitation is 443 mm [6]. The location map of the study area was prepared using ArcGIS software (Figure 1). The Akşehir-Eber wetland is the largest lake in Turkey by surface area, while Karamuk is ranked 26th and Karakuyu Lake is ranked 34th.

**Akşehir-Eber:** The Akşehir-Eber lakes are situated at the following geographical coordinates: 38°33'N-31°18'E, 38°37'N-31°32'E, 38°35'N-31°34'E, and 38°25'N-31°25'E. The mean annual precipitation is 461.26 mm, while the mean annual temperature is 11,6°C. Eber Lake has a surface area of 150 km<sup>2</sup> within the borders of Çay and Bolvadin districts, with a depth ranging from 1 to 3 m. Akşehir Lake has a surface area of 304,4 km<sup>2</sup> within the borders of Afyonkarahisar and Konya provinces. Both lakes are located in the depression area between the Sultan Mountains and the Emir Mountains.

**Karamuk Reeds:** The Karamuk Reeds are located between the following coordinates: 38° 30'N 30° 43'E, 38° 30'N 30° 54'E, 38° 21'N 30° 54'E, and 38° 21'N 30° 43'E. The altitude of the lake above sea level is 1002 m, with a surface area of 60,15 km<sup>2</sup>. The depth of the lake is generally 1-2 metres, reaching 3-4 metres in the middle parts. The average total rainfall is 406.43 mm, with an average annual temperature of 11,6 °C.

**Karakuyu:** Karakuyu Lake Wetland occupies an area of approximately 361 km<sup>2</sup> within the Dinar district of Afyon province, at coordinates 38° 02'N- 30°14'E. The lake is located at an altitude of 1,005 meters above sea level. The depth of the lake varies between 0.5 and 4 metres. The wetland has a surface area of 10,99 km<sup>2</sup>. The mean annual precipitation is 431.5 mm. The average annual temperature is 13,9°C.

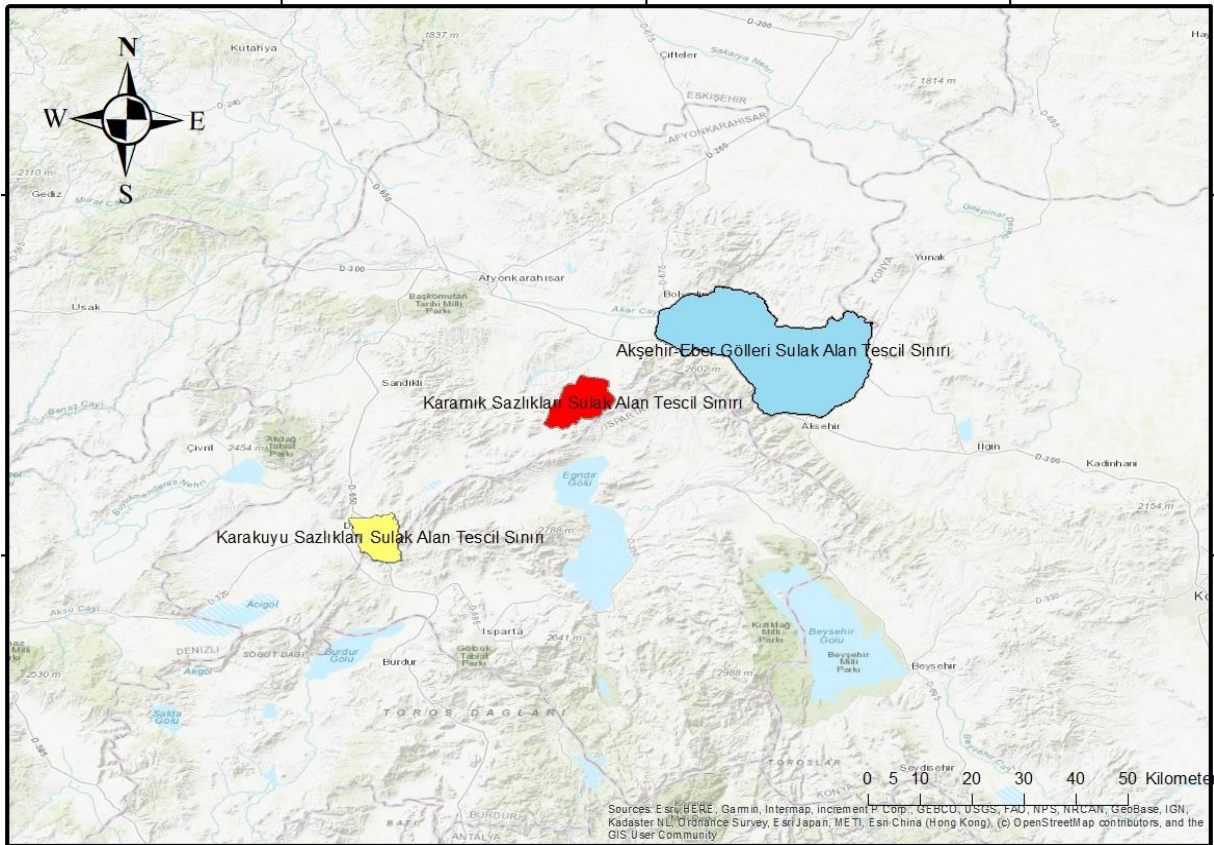


Figure 1. Map of the study area

## 2.2. Data collection

Plant samples and photographs were collected from the Eber-Akşehir, Karamuk, and Karakuyu wetlands and their surrounding areas between 2016 and 2018 in order to determine the floristic composition of the region. Some taxa were identified directly during field studies, while plants that could not be identified in the field were collected for further examination. Collected specimens were prepared as herbarium specimens for identification. Taxa identified by field observation are indicated as FO, whereas collected specimens are documented with collector numbers, as presented in Appendix 1. The majority of the specimens were identified using the Flora of Turkey and the East Aegean Islands [7; 8; 9]. Some identifications were cross-referenced with Flora Europaea [10] and Flora Iranica [15].

A list of the flora in the study area was compiled based on the current taxonomic status of the plants by Güner et al. [12]. The plant taxa of the wetlands flora are presented in alphabetical order. Abbreviations of the taxa follow Brummitt & Powell [13], and Raunkiaer [14] has been consulted for determining the life forms. The taxa list was organized by family, taxon name, locality number, life form, phytogeographical region, and endemism status, if applicable. Risk categories were evaluated using the IUCN [15] and the Red Data Book of Turkish Plants [16].

The IUCN abbreviations (EN: Endangered, LC: Least concern, NE: Not Evaluated, NT: Near Threatened, VU: Vulnerable) are given for endemic and non-endemic species in the text. The life forms and phytogeographic regions abbreviations used in the text and the appendix are Euxine (Eux.), Euro-Siberian element (Euro-Sib.), Mediterranean element (Medit.), East Mediterranean element (E. Medit.), Irano-Turanian element (Ir.-Tur.), Hemicryptophyte (Hcrp.), Therophyte (Th.), Cryptophyte (Crp.), Chamaephyte (Ch.), Vascular parasite (Vp.), Mesophanerophyte (Msph.).

## Jaccard's Similarity Index

A Venn diagram was drawn based on the taxa by the three selected regions and the related Jaccard Similarity Index for each pairing of the considered regions was calculated by the following formula:

$$J=C/A+B$$

Here, A and B represent the numbers of the taxa present in different data sets, and C represents the number of common taxa present in both data sets. The number of taxa present in either of the data sets is given by A + B [17].

### 3. Results

The study examines the flora of the Karamuk, Eber-Akşehir, and Karakuyu Wetlands, covering 146.189 hectares of internationally recognized wetlands. During the present floristic study carried out in the wetland habitats (rocky, steppe, forest, wet meadows, etc.) of Afyon, 491 taxa belonging to 93 families and 323 genera have been identified. The floristic list of this study is given Appendix 1. The total number of taxa in the Eber-Akşehir, Karakuyu and Karamuk wetlands are 419, 209, and 130, respectively (Table 1). The largest families are Asteraceae (56), Fabaceae (39) and Lamiaceae (38) in terms of the number of taxa included. Approximately 55% of the plant species in the whole flora can be represented by the first 10 families. These families are: Asteraceae (11%), Fabaceae (8%), Lamiaceae (8%), Rosaceae (5%), Apiaceae (5%), Caryophyllaceae (5%), Poaceae (4%), Brassicaceae (4%), Boraginaceae (3%), and Ranunculaceae (3%) (Figure 2).

Table 1. Number of vascular plants

	Family	Genus	Species
<b>Eber-Akşehir (1)</b>	91	302	419
<b>Karakuyu (2)</b>	60	163	209
<b>Karamuk (3)</b>	49	103	130
<b>Total</b>	<b>93</b>	<b>323</b>	<b>491</b>

Table 2. Distribution of taxa into families

Family	Total		Eber Akşehir		Karamuk Sazlığı		Karakuyu	
	N	Ratio (%)	N	Ratio (%)	N	Ratio (%)	N	Ratio (%)
Asteraceae	56	11	51	12,1	14	10,8	19	9,1
Fabaceae	39	8	35	8,3	8	6,2	14	6,7
Lamiaceae	38	8	28	6,7	14	10,8	19	9,1
Subtotal	133	27	114	27,1	36	27,7	52	24,9
Other Families	358	73	305	72,9	94	72,3	157	75,1
<b>Total</b>	<b>491</b>	<b>100</b>	<b>419</b>	<b>100,0</b>	<b>130</b>	<b>100,0</b>	<b>209</b>	<b>100,0</b>

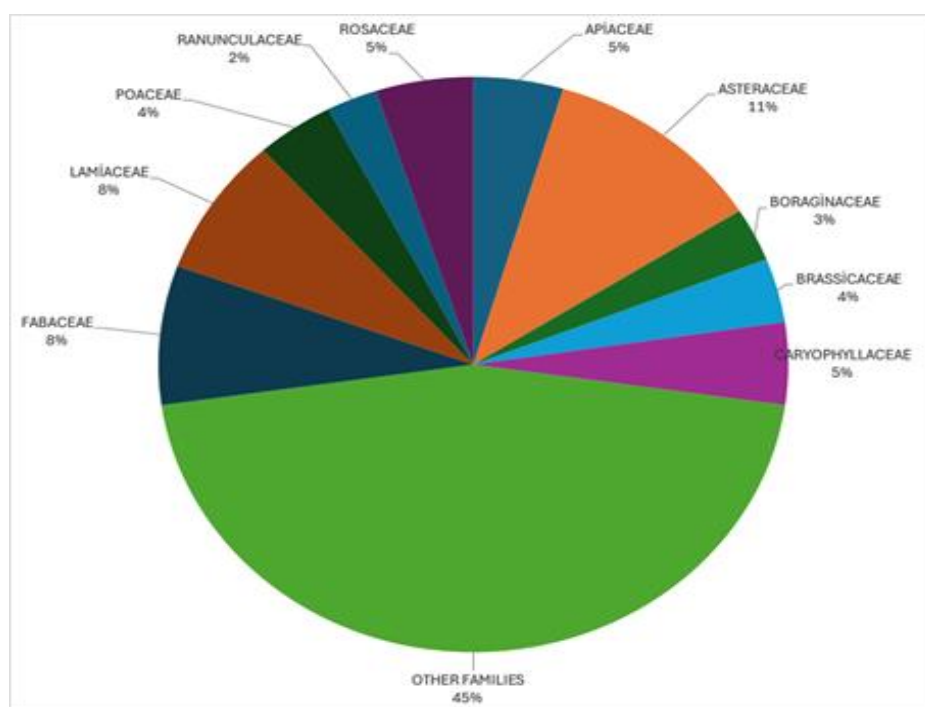


Figure 2. Diagram of family diversity analysis

The identified taxa were evaluated based on their phytogeographic regions, yielding the following results: 67 taxa (13.6%) to the Irano-Turanian region, 56 taxa (11.4%) to the Euro-Siberian region, 37 taxa (7.5%) were assigned to the East Mediterranean phytogeographic region, 31 taxa (6.3%) to the Mediterranean region, and 300 taxa (61.1%) were classified as cosmopolitan, and/or their phytogeographical regions remain unknown. The life forms were categorized according to Raunkiaer's classification. Among the taxa: 27 (5.5%) are Chamaephytes, 43 (8.8%) are Cryptophytes (Geophytes), 14 (2.9%) are Cryptophytes (Helophytes), 17 (3.5%) are Cryptophytes (Hydrophytes), 209 (42.6%) are Hemicryptophytes, 116 (23.6%) are Therophytes, 63 (12.8%) are Phanerophytes, and 2 (0.4%) are vascular parasites. (Table 3).

Table 3. Life Form, phytogeographic region and IUCN categories of endemic and non-endemic taxa (IUCN, 2024)

	<i>Endemic</i>		<i>Non endemic</i>		<i>Total</i>	
<i>Phytogeographic Region</i>	<i>Taxon number</i>	<i>%</i>	<i>Taxon number</i>	<i>%</i>	<i>Taxon number</i>	<i>%</i>
East Mediterranean	9	1,8	28	5,7	37	7,5
Irano-Turanian	25	5,1	42	8,6	67	13,6
Euro-Siberian	2	0,4	54	11,0	56	11,4
Mediterranean	3	0,6	28	5,7	31	6,3
Unknown and other	16	3,3	284	57,8	300	61,1
<i>Total</i>	55	11,2	436	88,8	491	100,0
<i>IUCN Risk categories</i>	<i>Taxon number</i>	<i>%</i>	<i>Taxon number</i>	<i>%</i>	<i>Taxon number</i>	<i>%</i>
Critically Endangered (CR)	1	0,2	-	-	1	0,2
Endangered (EN)	1	0,2	-	-	1	0,2
Least Concern (LC)	35	7,1	24	4,9	59	12
Not Evaluated (NE)	15	3,1	409	83,3	424	86,4
Near Threatened (NT)	4	0,8	1	0,2	5	1
Data Deficient (DD)	-	-	2	0,4	2	0,4
<i>Total</i>	55	11,2	436	88,8	491	100,0
<i>Life form</i>	<i>Taxon number</i>	<i>%</i>	<i>Taxon number</i>	<i>%</i>	<i>Taxon number</i>	<i>%</i>
Chamaephyte	5	1,0	22	4,5	27	5,5
Cryptophyte (Geophyte)	6	1,2	37	7,5	43	8,8
Cryptophyte (Helophytes)	-	-	14	2,9	14	2,9
Cryptophyte (Hydrophyte)	-	-	17	3,5	17	3,5
Hemicryptophyte	36	7,3	173	35,2	209	42,6
Phanerophyte	3	0,6	60	12,2	63	12,8
Therophyte	5	1,0	111	22,6	116	23,6
Vascular parasite	-	-	2	0,4	2	0,4
<i>Total</i>	55	11,2	436	88,8	491	100,0

In a comprehensive evaluation, Ekim et al. (2014) and the IUCN (2024) assessed the threat categories of both endemic and non-endemic plant species. The distribution of endemic and rare non-endemic plants into threat categories is detailed in Table 3. The distribution of endemic taxa into threat categories is as follows: CR (1 taxon), EN (1 taxon), VU (1 taxon), NT (4 taxa), LC (35 taxa), NE (14 taxa) and the threat categories of rare plants that are non-endemic are as follows: DD (2 taxa), NT (1 taxon), LC (24 taxa), NE (409 taxa). *Scabiosa hololeuca* Bornm. is categorised as Endangered (EN), while *Vuralia turcica* (Kit Tan, Vural & Küçüködük) Uysal & Ertuğrul is classified as Critically Endangered (CR). These taxa are assigned a conservation priority in accordance with the IUCN threat categories (2024).

#### 4. Conclusions and discussion

The findings of this study provide important insights into the floristic structure of the studied wetlands. First, the floristic structure was identified, and second, all species with conservation priority in this region were established. Furthermore, a comprehensive list of all plants was created, and a comparison was made of the floral diversity of wetlands of national importance and their surroundings in Afyon Province.

The largest family in the study area is Asteraceae, which is also the largest family in the Flora of Turkey. This is due to the fact that the family exhibits a high level of ecological tolerance and has a propensity for seed dispersal. A comparative analysis of flora studies conducted in the surrounding areas of the Eber-Akşehir, Karakuyu and Karamuk wetlands reveals an outcome similar to that of our study [18;19;20].

A large number of hemicryptophyte taxa were identified in this study. The second most prevalent group of plants in the study area is therophytes, which are succeeded by cryptophytes. The Balıkdamı wetland flora, the closest wetland in the study area, exhibits a similar range of life forms [21].

The Jaccard index showed the highest overlap between Eber-Akşehir and Karakuyu, possibly due to the higher taxon richness and more extensive land cover of Eber-Akşehir. In contrast, the lowest overlap was observed between the Karakuyu and Karamuk wetlands, which can be attributed primarily to the geographical distance between these two sites. Although the Karakuyu and Karamuk wetlands are similar in size, Karakuyu exhibits a higher species diversity than Karamuk. The floristic richness identified in this study is consistent with previous studies emphasizing the importance of wetlands in Mediterranean and inner regions in terms of plant biodiversity (23).

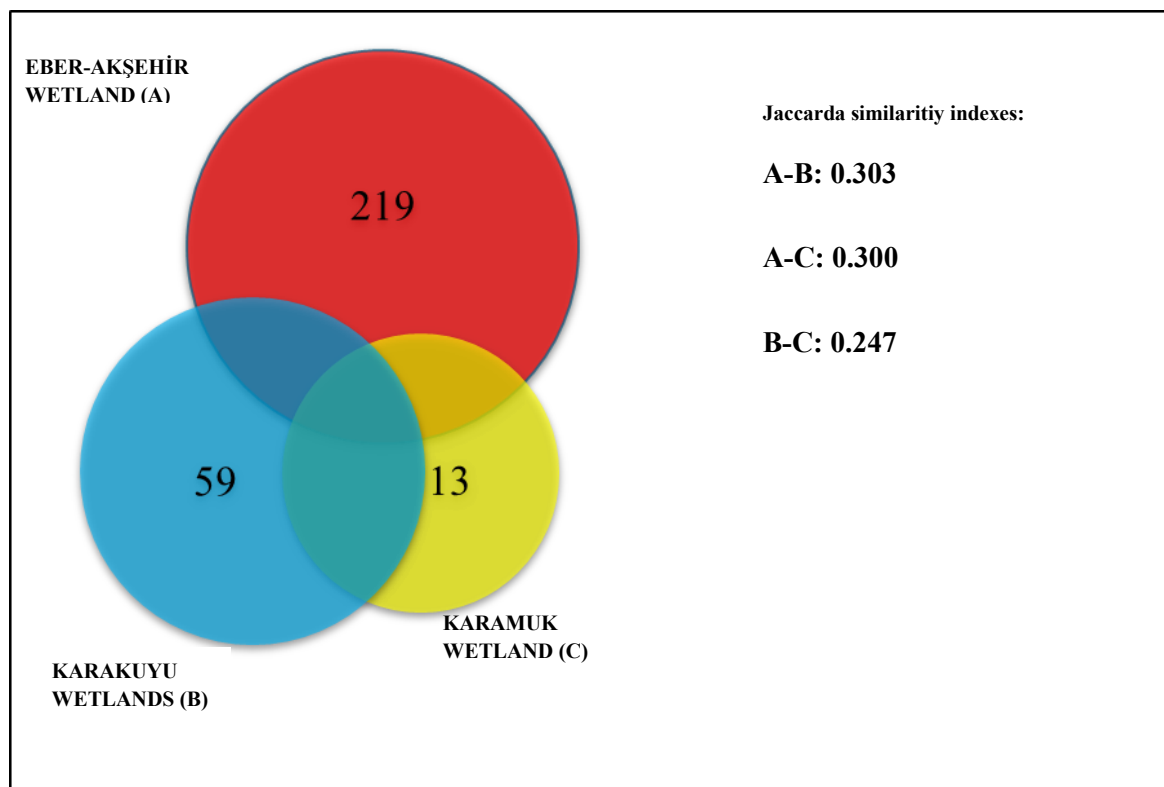


Figure 3. The overlap in the number of taxa by three wetlands

Figure 3 presents a Venn diagram that demonstrates the overlap among Eber Akşehir, Karakuyu, and Karamuk wetlands. It shows the number of common taxa with high similarity percentages and the related Jaccard Similarity Indexes. As a result of this study, endemic and rare species of three wetlands of Afyon region were determined. The endemism ratio is 11.2%, with 55 taxa. Twenty-five (45.5%) of the endemic taxa in question are associated with the Irano-Turanian phytogeographic region. Nineteen (21.8%) are linked to the Mediterranean region, while two (3.6%) are classified as Euro-Siberian. The remaining sixteen (29.1%) are phytogeographically unknown endemics. The results of our study are comparable to those of Kargıoğlu [19], who conducted research in the nearby area, with regard to the phytosociological composition of the flora.

As in Turkey, Afyon's wetlands are affected by human activities, including irrigation, habitat conversion, and reed and shrub burning [24]. The impact of renewable energy production on endemic or rare plant species is also a concern [22]. There is an urgent need for conservation efforts, especially for the plant species *Scabiosa hololeuca*

Bornm. (EN) and *Vuralia turcica* (Kit Tan, Vural & Küçüködük) Uysal & Ertuğrul (CR), which have been identified in the area.

**Acknowledgement:** This study was financially supported by the General Directorate of Nature Conservation and National Parks, Department of Wetlands. The authors gratefully acknowledge this support.

**Conflicts of interest:** No Conflict of Interest.

**Funding:** This research was funded by the General Directorate of Nature Conservation and National Parks, Department of Wetlands.

**Ethical statement:** This study does not require ethical approval.

**Author contributions:** All authors contributed to the study conception and design. All authors read and approved the final manuscript.

## References

- [1] Heino, J., Alahuhta, J., Bini, L. M., Cai, Y., Heiskanen, A. S., Hellsten, S., ... Angeler, D. G. (2021). Lakes in the era of global change: Moving beyond single-lake thinking in maintaining biodiversity and ecosystem services. *Biological Reviews*, 96(1), 89–106. <https://doi.org/10.1111/brv.12648>
- [2] Geijzendorffer, I., Chazée, L., Gaget, E., Galewski, T., Guelmami, A., Perennou, C., Davidson, N., & McInnes, R. (2018). *Mediterranean wetlands outlook 2: Solutions for sustainable Mediterranean wetlands*. Secretariat of the Ramsar Convention. Retrieved February 27, 2024, from <https://medwet.org/publications/med-wetlands-outlook-2-2018/>
- [3] Lehner, B., Liermann, C. R., Revenga, C., Vörösmarty, C., Fekete, B., Crouzet, P., ... Wissler, D. (2011). High-resolution mapping of the world's reservoirs and dams for sustainable river-flow management. *Frontiers in Ecology and the Environment*, 9(9), 494–502. <https://doi.org/10.1890/100125>
- [4] Perennou, C., Gaget, E., Galewski, T., Geijzendorffer, I., & Guelmami, A. (2020). Evolution of wetlands in the Mediterranean region. In *Water resources in the Mediterranean region* (pp. 297–320). Elsevier.
- [5] Tarım ve Orman Bakanlığı. (2025). *Sulak alanlar*. Retrieved February 23, 2025, from <https://www.tarimorman.gov.tr>
- [6] Meteoroloji Genel Müdürlüğü. (2024). *İklim verileri*. Retrieved December 10, 2024, from <https://www.mgm.gov.tr>
- [7] Davis, P. H. (1965–1985). *Flora of Turkey and the East Aegean Islands* (Vols. 1–9). Edinburgh, UK: Edinburgh University Press.
- [8] Davis, P. H., Mill, R. R., & Tan, K. (1988). *Flora of Turkey and the East Aegean Islands* (Vol. 10). Edinburgh, UK: Edinburgh University Press.
- [9] Güner, A., Özhatay, N., Ekim, T., Başer, K. H. C., & Hedge, I. C. (2000). *Flora of Turkey and the East Aegean Islands* (Vol. 11). Edinburgh, UK: Edinburgh University Press.
- [10] Tutin, T. G., Heywood, V. H., Burges, N. A., Moore, D. M., Valentine, D. H., Walters, S. M., & Webb, D. A. (1964–1980). *Flora Europaea* (Vols. 1–5). Cambridge, UK: Cambridge University Press.
- [11] Rechinger, K. H. (1965–1977). *Flora Iranica*. Graz, Austria: Akademische Druck- und Verlagsanstalt.
- [12] Güner, A., Aslan, S., Ekim, T., Vural, M., & Babaç, M. T. (2012). *Türkiye Bitkileri Listesi (Damarlı Bitkiler)*. İstanbul, Türkiye: Nezahat Gökyiğit Botanik Bahçesi Yayınları.
- [13] Brummitt, R. K., & Powell, C. E. (1992). *Authors of plant names*. London, UK: Royal Botanic Gardens, Kew.
- [14] Raunkiaer, C. (1934). *The life-forms of plants and their bearing on geography*. Oxford, UK: Clarendon Press.
- [15] IUCN. (2012). *IUCN Red List categories and criteria* (Version 3.1). Gland, Switzerland & Cambridge, UK: IUCN Species Survival Commission.
- [16] Ekim, T., Koyuncu, M., Vural, M., Duman, H., Aytac, Z., & Adıgüzel, N. (2000). *Türkiye Bitkileri Kırmızı Kitabı (Eğrelti ve Tohumlu Bitkiler)*. Ankara, Türkiye: Türkiye Tabiatını Koruma Derneği.
- [17] Jaccard, P. (1908). Nouvelles recherches sur la distribution florale. *Bulletin de la Société Vaudoise des Sciences Naturelles*, 44, 223–270.
- [18] Akçiçek, E. (2003). Flora of Kumalar Mountain (Afyon). *Turkish Journal of Botany*, 27(5), 383–420.
- [19] Kargioğlu, M. (2003). The flora of Ahırdağı (Afyonkarahisar) and its environs. *Turkish Journal of Botany*, 27(5), 357–381.

- [20] Kocabiyik, T., Serteser, A., & Kargioğlu, M. (2009). Emir Dağları (Afyonkarahisar) güney yarısı florası. *Selçuk Üniversitesi Fen Fakültesi Fen Dergisi*, 2(33), 1–20.
- [21] Koyuncu, O., Ataşlar, E., Tokur, S., Erten, M. E., & Ardıç, M. (2008). The flora of Balıkdanı wetland and its surroundings (Sivrihisar, Eskişehir, Turkey). *Turkish Journal of Botany*, 32(3), 227–241.
- [22] Urziceanu, M., Anastasiu, P., Rozyłowicz, L., & Şesan, T. E. (2021). Local-scale impact of wind energy farms on rare, endemic, and threatened plant species. *PeerJ*, 9, e11390. <https://doi.org/10.7717/peerj.11390>.
- [23] Bozyel, D., Pelit, N. B., & Şenol, S. G. (2021). A new record from the Mediterranean temporary wetland habitats, for flora of Turkey: *Crassula vaillantii*. *Biological Diversity and Conservation*, 14(3), 359–364. <https://doi.org/10.46309/biodicon.2021.763528>.
- [24] Yücel, E. 1987. Eber Gölü ve Yaban Ördekleri. *Tabiat ve İnsan Dergisi*, 21(4), 34-39.

#### Appendix 1. List of recorded plant taxa in the study area

Collector numbers indicate taxa from which plant specimens were collected. “FO” indicates field observation (including photographic record).

Family	Taxa	Local Name	Endemizm	Risk Categories	Life Form	Phytogeographical Regions	Wetlands No	Collector No. / Record Type
ACANTHACEAE	<i>Acanthus hirsutus</i> Boiss.	Kılıyapınçesi	Non-Endemic	LC	Hemicryptophyte	Unknown	1,2,3	FO
ADOXACEAE	<i>Sambucus nigra</i> L.	Ağaçmürver	Non-Endemic	NE	Phanerophyte	Unknown	1	FO
ADOXACEAE	<i>Viburnum lantana</i> L.	Germeşe	Non-Endemic	NE	Phanerophyte	Unknown	1	FO
ALISMATACEAE	<i>Alisma gramineum</i> Lej.	İnceçobandüğü	Non-Endemic	LC	Hemicryptophyte	Unknown	1,2,3	FO
ALISMATACEAE	<i>Alisma lanceolatum</i> With.	Kurbağakaşığı	Non-Endemic	NE	Hemicryptophyte	Unknown	1	FO
ALISMATACEAE	<i>Alisma plantago-aquatica</i> L.	Çakalkulağı	Non-Endemic	NE	Hemicryptophyte	Euro-Siberian	1,3	FO
ALISMATACEAE	<i>Baldellia ranunculoides</i> (L.) Pari.	Sutopuzu	Non-Endemic	NE	Cryptophyte (Helophytes)	Euro-Siberian	1	FO
AMARANTHACEAE	<i>Beta vulgaris</i> L.	Pancar	Non-Endemic	NE	Hemicryptophyte	Unknown	2	FO
AMARANTHACEAE	<i>Chenopodium foliosum</i> Aesch	Cülek	Non-Endemic	NE	Therophyte	Unknown	1	FO
AMARYLLIDACEAE	<i>Allium atroviolaceum</i> Boiss.	Lifli Körmən	Non-Endemic	DD	Cryptophyte (Geophyte)	Unknown	2	ÜS 1652
AMARYLLIDACEAE	<i>Allium myrianthum</i> Boiss.	Paksoğan	Non-Endemic	NE	Cryptophyte (Geophyte)	Irano-Turanian	1	FO
AMARYLLIDACEAE	<i>Allium phrygium</i> Boiss.	Yazılı Soğanı	Endemic	LC	Cryptophyte (Geophyte)	Irano-Turanian	2	ÜS 1657
AMARYLLIDACEAE	<i>Allium scorodoprasum</i> L. subsp. <i>rotundum</i> (L.) Stearn	Delipırasa	Non-Endemic	NE	Cryptophyte (Geophyte)	Euro-Siberian	1	FO
AMARYLLIDACEAE	<i>Allium vineale</i> L.	Sirmo	Non-Endemic	NE	Cryptophyte (Geophyte)	Unknown	2	ÜS 1655
ANACARDIACEAE	<i>Pistacia palaestina</i> Boiss.	Çöğre	Non-Endemic	NE	Phanerophyte	East Mediterranean	1	FO
APIACEAE	<i>Artemisia squamata</i> L.	Karabenek	Non-Endemic	NE	Therophyte	Unknown	2	FO
APIACEAE	<i>Bifora testiculata</i> (L.) Sprengel ex Schultes	Yumurca	Non-Endemic	NE	Therophyte	Unknown	1	FO
APIACEAE	<i>Bunium microcarpum</i> (Boiss.) Freyn. subsp. <i>microcarpum</i>	İncirop	Non-Endemic	NE	Cryptophyte (Geophyte)	East Mediterranean	1	FO
APIACEAE	<i>Bupleurum heldreichii</i> Boiss. & Balansa	Şeytantuzu	Endemic	LC	Therophyte	Irano-Turanian	1,2,3	FO
APIACEAE	<i>Bupleurum sulphureum</i> Boiss. & Balansa	Ters Şeytanayağı	Endemic	LC	Therophyte	Irano-Turanian	2	FO
APIACEAE	<i>Caucalis platycarpus</i> L.	Kavkal	Non-Endemic	NE	Therophyte	Unknown	1	FO
APIACEAE	<i>Daucus carota</i> L.	Yabani Havuç	Non-Endemic	NE	Hemicryptophyte	Unknown	2	FO
APIACEAE	<i>Echinophora tenuifolia</i> L. subsp. <i>sibthorpii</i> (Guss.) Tutin	Sarıçördük	Non-Endemic	NE	Hemicryptophyte	Irano-Turanian	1	FO
APIACEAE	<i>Echinophora tournefortii</i> Jaub. ex Spach	Dikenliçördük	Non-Endemic	NE	Hemicryptophyte	Irano-Turanian	1	FO
APIACEAE	<i>Eryngium campestre</i> L.	Boğadikeni	Non-Endemic	NE	Hemicryptophyte	Unknown	1,2	FO
APIACEAE	<i>Falcaria vulgaris</i> Bern	Orakotu	Non-Endemic	NE	Hemicryptophyte	Unknown	1	FO
APIACEAE	<i>Ferulago aucheri</i> Boiss.	Yaylakışnişi	Endemic	LC	Hemicryptophyte	Unknown	3	FO
APIACEAE	<i>Ferulago trachycarpa</i> Boiss.	Yaylakışnişi	Endemic	LC	Hemicryptophyte	East Mediterranean	1	FO

APIACEAE	<i>Heracleum platytaenium</i> Boiss.	Öğrekotu	Endemic	LC	Hemicryptophyte	Euro-Siberian	1	FO
APIACEAE	<i>Malabaila secacul</i> Banks et Sol.	Davarotu	Non-Endemic	NE	Hemicryptophyte	Unknown	1	FO
APIACEAE	<i>Orlaya daucooides</i> (L.) Greuter	Dilkanatan	Non-Endemic	NE	Therophyte	Mediterranean	1	FO
APIACEAE	<i>Pastinaca sativa</i> L.	Şekerhavucu	Non-Endemic	NE	Hemicryptophyte	Unknown	1	FO
APIACEAE	<i>Pimpinella tragiium</i> subsp. <i>polyclada</i> (Boiss. & Heldr.)	Dağanasonu	Non-Endemic	NE	Cryptophyte (Geophyte)	Unknown	1	FO
APIACEAE	<i>Scandix iberica</i> Bieb.	Atkişnekotu	Non-Endemic	NE	Therophyte	Unknown	1	FO
APIACEAE	<i>Scandix pecten-veneris</i> L.	Zühretarağı	Non-Endemic	NE	Therophyte	Unknown	1,3	FO
APIACEAE	<i>Torilis leptophylla</i> (L.) Reichb. f.	Dercikotu	Non-Endemic	NE	Therophyte	Unknown	1	FO
APIACEAE	<i>Torilis ucranica</i> Spreng.	Çayır Dercikotu	Non-Endemic	NE	Therophyte	Unknown	2	ÜS 1656
APIACEAE	<i>Turgenia latifolia</i> (L.) Hoffm.	Karaheci	Non-Endemic	NE	Therophyte	Unknown	1	FO
APOCYNACEAE	<i>Cionura erecta</i> (L.) Griseb	Babrik	Non-Endemic	NE	Phanerophyte	East Mediterranean	2	FO
APOCYNACEAE	<i>Cynanchum acutum</i> subsp. <i>acutum</i> L.	Bacırgan	Non-Endemic	NE	Hemicryptophyte	Unknown	1	FO
APOCYNACEAE	<i>Vinca herbacea</i> Waldst. & Kit	Bikirçiçeği	Non-Endemic	NE	Chamaephyte	Unknown	1	FO
ARACEAE	<i>Arum elongatum</i> C.A. Meyer var. <i>detruncatum</i> C.A. Meyer	yılancıctüğü	Non-Endemic	NE	Cryptophyte (Geophyte)	Unknown	2	FO
ARACEAE	<i>Arum rupicola</i> Boiss.	Dağsorsalı	Non-Endemic	NE	Cryptophyte (Geophyte)	Unknown	1	FO
ARACEAE	<i>Lemna minor</i> L.	Sumercimeği	Non-Endemic	LC	Cryptophyte (Hydrophyte)	Unknown	1,2,3	FO
ARACEAE	<i>Lemna trisulca</i> L.	Yivlisumercimeği	Non-Endemic	LC	Cryptophyte (Hydrophyte)	Unknown	1,2	FO
ASPARAGACEAE	<i>Asparagus tenuifolius</i> Lam.	Tülyaparak	Non-Endemic	NE	Hemicryptophyte	Euro-Siberian	1	FO
ASPARAGACEAE	<i>Bellevalia tauri</i> Feinbrun	Güneysümbülü	Endemic	NE	Cryptophyte (Geophyte)	East Mediterranean	1	FO
ASPARAGACEAE	<i>Muscari armeniacum</i> Leichtlin ex Baker	Gävurbaşı	Non-Endemic	NE	Cryptophyte (Geophyte)	Unknown	1	FO
ASPARAGACEAE	<i>Muscari comosum</i> (L.) Mill	Morbaş	Non-Endemic	NE	Cryptophyte (Geophyte)	Mediterranean	1	FO
ASPARAGACEAE	<i>Muscari neglectum</i> Guss. ex Ten.	Arapüzümü Göster	Non-Endemic	NE	Cryptophyte (Geophyte)	Unknown	1	FO
ASPARAGACEAE	<i>Ornithogalum armeniacum</i> Baker	Soryaz	Non-Endemic	NE	Cryptophyte (Geophyte)	East Mediterranean	1	FO
ASPARAGACEAE	<i>Ornithogalum oligophyllum</i> E.D. Clarke	Kurtsoğanı	Non-Endemic	NE	Cryptophyte (Geophyte)	Unknown	1	FO
ASPARAGACEAE	<i>Scilla bifolia</i> L.	Ormansümbülü	Non-Endemic	NE	Cryptophyte (Geophyte)	Mediterranean	1	FO
ASPLENIACEAE	<i>Asplenium ceterach</i> L.	Dalakotu	Non-Endemic	NE	Hemicryptophyte	Unknown	1,3	FO
ASPLENIACEAE	<i>Dryopteris filix-mas</i> (L.) Schott	Erkeğrelti	Non-Endemic	NE	Cryptophyte (Geophyte)	Unknown	1	FO
ASTERACEAE	<i>Achillea arabica</i> Kotschy	Hanzabel	Non-Endemic	NE	Hemicryptophyte	Irano-Turanian	1,2	ÜS 1650
ASTERACEAE	<i>Achillea millefolium</i> L. subsp. <i>millefolium</i>	Civanperçemi	Non-Endemic	NE	Hemicryptophyte	Euro-Siberian	1,2	ÜS 1677
ASTERACEAE	<i>Achillea setacea</i> Waldst. & Kit	Ayvabala	Non-Endemic	NE	Hemicryptophyte	Euro-Siberian	1	FO
ASTERACEAE	<i>Achillea teretifolia</i> Willd.	Bezazcivanperçemi	Endemic	LC	Hemicryptophyte	Irano-Turanian	1,3	FO
ASTERACEAE	<i>Anthemis cretica</i> L. subsp. <i>anatolica</i> (Boiss.) Grierson	Horozpapatyası	Non-Endemic	NE	Hemicryptophyte	Unknown	1,2	ÜS 1660
ASTERACEAE	<i>Anthemis wallii</i> Hub. -Mor. & Reese	burdur papatyası	Endemic	NT	Hemicryptophyte	Irano-Turanian	2	FO
ASTERACEAE	<i>Arctium minus</i> (Hill) Bernh	Löşlek	Non-Endemic	NE	Hemicryptophyte	Euro-Siberian	1	FO
ASTERACEAE	<i>Artemisia campestris</i> L. var. <i>campestris</i>	Karasüpürge	Non-Endemic	NE	Hemicryptophyte	Unknown	1	FO
ASTERACEAE	<i>Asteriscus aquaticus</i> (L.) Less.,	Santop	Non-Endemic	NE	Therophyte	Mediterranean	1	FO
ASTERACEAE	<i>Bellis perennis</i> L.	Koyungözü	Non-Endemic	NE	Hemicryptophyte	Euro-Siberian	1	FO
ASTERACEAE	<i>Bidens tripartita</i> L.	Üçsuketeni	Non-Endemic	NE	Therophyte	Unknown	1	FO
ASTERACEAE	<i>Cardopatum corymbosum</i> (L.) Pers.	Kurtludiken	Non-Endemic	NE	Hemicryptophyte	East Mediterranean	1	FO
ASTERACEAE	<i>Carduus nutans</i> L. subsp. <i>nutans</i>	Eşekdikeni	Non-Endemic	NE	Hemicryptophyte	Unknown	1	FO
ASTERACEAE	<i>Carlina oligocephala</i> Boiss. & Kotschy subsp. <i>oligocephala</i>	Domuzdikeni	Non-Endemic	NE	Therophyte	Unknown	1	FO
ASTERACEAE	<i>Carthamus dentatus</i> Vahl	Kinadikeni	Non-Endemic	NE	Hemicryptophyte	Unknown	1	FO
ASTERACEAE	<i>Centaurea drabifolia</i> Sibth. & Sm.	öbek saribaş	Non-Endemic	LC	Hemicryptophyte	Unknown	3	FO

ASTERACEAE	<i>Centaurea iberica</i> Trev. ex Sprengel	Deligözdikeni	Non Endemic	NE	Hemicryptophyte	Unknown	1,3	FO
ASTERACEAE	<i>Centaurea kotschyi</i> (Boiss.) Hayek var. <i>kotschyi</i>	Dişleksarıbaş	Endemic	LC	Hemicryptophyte	Unknown	1	FO
ASTERACEAE	<i>Centaurea solstitialis</i> L. subsp. <i>solstitialis</i> L.	Çakırdikeni	Non Endemic	NE	Therophyte	Unknown	1,2,3	FO
ASTERACEAE	<i>Centaurea urvillei</i> DC. subsp. <i>urvillei</i>	Alakötürüm	Non Endemic	LC	Hemicryptophyte	East Mediterranean	1,2,3	FO
ASTERACEAE	<i>Centaurea virgata</i> Lam.	Acısüpürge	Non Endemic	NE	Hemicryptophyte	Irano-Turanian	1,2,3	ÜS 1664
ASTERACEAE	<i>Cichorium intybus</i> L.	Hindiba	Non Endemic	NE	Hemicryptophyte	Unknown	1	FO
ASTERACEAE	<i>Cirsium arvense</i> (L.) Scop.	Köyğöçüren	Non Endemic	NE	Hemicryptophyte	Unknown	1,2,3	FO
ASTERACEAE	<i>Cota tinctoria</i> (L.) J. Gay	Boyacıpapatyası	Non Endemic	NE	Hemicryptophyte	Unknown	1,2	ÜS 1663
ASTERACEAE	<i>Cousinia halysensis</i> Hub. -Mor.	Yerkızanı	Endemic	LC	Hemicryptophyte	Irano-Turanian	3	FO
ASTERACEAE	<i>Cousinia iconica</i> Hub. -Mor.	Çatalkızan	Non Endemic	NE	Hemicryptophyte	Irano-Turanian	2	FO
ASTERACEAE	<i>Crepis foetida</i> L. subsp. <i>rheadiifolia</i> (M. Bieb.) Celak.	Kohum	Non Endemic	NE	Therophyte	Unknown	1	FO
ASTERACEAE	<i>Crepis sancta</i> (L.) Babcock	Yabankıskısı	Non Endemic	NE	Therophyte	Unknown	1	FO
ASTERACEAE	<i>Cyanus depressus</i> (M. Bieb.) Soják	Gökbaş	Non Endemic	NE	Therophyte	Unknown	1,3	FO
ASTERACEAE	<i>Cyanus triumfettii</i> (All.) Dostál ex A. Löve & D. Löve	Delikapele	Non Endemic	NE	Hemicryptophyte	Unknown	1	FO
ASTERACEAE	<i>Doronicum orientale</i> Hoffm	Kaplanotu	Non Endemic	NE	Cryptophyte (Geophyte)	Unknown	1	FO
ASTERACEAE	<i>Echinops spinosissimus</i> subsp. <i>spinosissimus</i> Turra	Eşekköftesi	Non Endemic	NE	Hemicryptophyte	East Mediterranean	1,2	FO
ASTERACEAE	<i>Filago pyramidata</i> L.	Ateşpamuğu	Non Endemic	NE	Therophyte	Unknown	1	FO
ASTERACEAE	<i>Helichrysum plicatum</i> DC subsp. <i>plicatum</i> DC.	Mantuvar	Non Endemic	NE	Hemicryptophyte	Unknown	1	FO
ASTERACEAE	<i>Inula britannica</i> L.	Çayırاندızı	Non Endemic	NE	Hemicryptophyte	Euro-Siberian	1	FO
ASTERACEAE	<i>Inula heterolepis</i> Boiss.	Ak Andızotu	Non Endemic	NE	Hemicryptophyte	East Mediterranean	2,3	ÜS 1659
ASTERACEAE	<i>Jurinea consanguinea</i> DC.	Geyikgöbeği	Non Endemic	NE	Hemicryptophyte	Unknown	1	FO
ASTERACEAE	<i>Lactuca serriola</i> L.	Delimarul	Non Endemic	NE	Hemicryptophyte	Unknown	1	FO
ASTERACEAE	<i>Leontodon asperimus</i> (Willd.) Endl.	Aşyemliği	Non Endemic	NE	Hemicryptophyte	Irano-Turanian	1	FO
ASTERACEAE	<i>Matricaria chamomilla</i> L. var. <i>recutita</i> (L.) Grierson	Almenpapatyası	Non Endemic	NE	Therophyte	Unknown	1	FO
ASTERACEAE	<i>Onopordum anatolicum</i> Boiss. & Heldr. ex Eig	Kangal	Endemic	LC	Hemicryptophyte	Irano-Turanian	1,2,3	FO
ASTERACEAE	<i>Picnoman acarna</i> (L.) Cass.	Kılıçkaldiken	Non Endemic	NE	Therophyte	Mediterranean	1,2	FO
ASTERACEAE	<i>Pilosella hoppeana</i> (Schultes) C.H. et F.W. Schultz subsp. <i>troica</i> (Zahn) Sell et West	Ertınakotu	Non Endemic	NE	Hemicryptophyte	Unknown	1	FO
ASTERACEAE	<i>Ptilostemon afer</i> (Jacq.) Greuter subsp. <i>eburneus</i> Greuter	Hasbozlanotu	Endemic	NE	Hemicryptophyte	Unknown	1,2,3	FO
ASTERACEAE	<i>Rhaponticum repens</i> (L.) Hidalgo	Kekredikeni	Non Endemic	NE	Cryptophyte (Geophyte)	Irano-Turanian	1	FO
ASTERACEAE	<i>Scolymus hispanicus</i> L.	Şevketibostan	Non Endemic	NE	Hemicryptophyte	Mediterranean	1,2	FO
ASTERACEAE	<i>Scorzonera cana</i> (C.A. Mey.) Griseb. var. <i>radicosa</i> (Boiss.) D.F. Chamb.	Çukurçitliği	Non Endemic	NE	Hemicryptophyte	Unknown	1	FO
ASTERACEAE	<i>Senecio vernalis</i> Waldst. & Kit.	Kanaryaotu	Non Endemic	NE	Therophyte	Unknown	1	FO
ASTERACEAE	<i>Senecio vulgaris</i> L.	Taşakelotu	Non Endemic	NE	Therophyte	Unknown	1	FO
ASTERACEAE	<i>Sonchus asper</i> (L.) Hill subsp. <i>glaucescens</i> (Jord.) Ball	Yaraotu	Non Endemic	NE	Therophyte	Unknown	1	FO
ASTERACEAE	<i>Taraxacum scaturiginosum</i> G.E. Haglund	Karahindiba	Non Endemic	NE	Hemicryptophyte	Unknown	1	FO
ASTERACEAE	<i>Tragopogon latifolius</i> Boiss. var. <i>angustifolius</i> Boiss.	Isırık	Non Endemic	NE	Hemicryptophyte	Unknown	1	FO
ASTERACEAE	<i>Tussilago farfara</i> L.	Öksürükotu	Non Endemic	NE	Cryptophyte (Geophyte)	Euro-Siberian	1	FO
ASTERACEAE	<i>Xanthium spinosum</i> L.	Pıtrak	Non Endemic	NE	Therophyte	Unknown	1,2	FO
ASTERACEAE	<i>Xanthium strumarium</i> L. subsp. <i>cavamillesii</i> (Schouw.) D.Löve & P. Dansereau	Kocapıtrak	Non Endemic	NE	Therophyte	Unknown	1	FO
ASTERACEAE	<i>Xeranthemum annuum</i> L.	Kağıtçiçeği	Non Endemic	NE	Therophyte	Unknown	1,2,3	FO
BERBERİDACEAE	<i>Berberis crataegina</i> DC.	Karamuk	Non Endemic	NE	Phanerophyte	Unknown	1,2,3	FO
BETULACEAE	<i>Corylus avellana</i> L. var. <i>avellana</i>	Findik	Non Endemic	NE	Phanerophyte	Euro-Siberian	1	FO

BORAGİNACEAE	<i>Alkanna areolata</i> var. <i>areolata</i> Boiss.	Sipihavacıaotu	Non Endemic	LC	Hemicryptophyte	East Mediterranean	1,3	FO
BORAGİNACEAE	<i>Alkanna tinctoria</i> (L.) Taush.	Havacıaotu	Non Endemic	NE	Hemicryptophyte	Mediterranean	1	FO
BORAGİNACEAE	<i>Anchusa azurea</i> Mill.	Siğurdili	Non Endemic	NE	Hemicryptophyte	Unknown	1,2,3	FO
BORAGİNACEAE	<i>Anchusa hybrida</i> Ten.	Tatlibaba	Non Endemic	NE	Hemicryptophyte	Mediterranean	1,2,3	FO
BORAGİNACEAE	<i>Cerithe minor</i> L. subsp. <i>auriculata</i> (Ten.) Domac	Livarotu	Non Endemic	NE	Hemicryptophyte	Euro-Siberian	1	FO
BORAGİNACEAE	<i>Cynoglossum montanum</i> L.	Dağköpek dili	Non Endemic	NE	Hemicryptophyte	Euro-Siberian	1	FO
BORAGİNACEAE	<i>Echium italicum</i> L.	Kurtkuyruğu	Non Endemic	NE	Hemicryptophyte	Mediterranean	1,2,3	FO
BORAGİNACEAE	<i>Heliotropium europaeum</i> L.	Akrepotu	Non Endemic	NE	Therophyte	Irano-Turanian	1,2,3	FO
BORAGİNACEAE	<i>Moltkia aurea</i> Boiss.	Sarikesen	Endemic	LC	Hemicryptophyte	Irano-Turanian	2	FO
BORAGİNACEAE	<i>Myosotis alpestris</i> subsp. <i>alpestris</i> F.W. Schmidt	Boncukotu	Non Endemic	NE	Hemicryptophyte	Unknown	3	FO
BORAGİNACEAE	<i>Myosotis ramosissima</i> Rochel	Boncukotu	Non Endemic	NE	Therophyte	Unknown	1	FO
BORAGİNACEAE	<i>Onosma bornmuelleri</i> Hausskn. & Bornm.	Amasya Şıncarı	Endemic	NE	Hemicryptophyte	Irano-Turanian	2	FO
BORAGİNACEAE	<i>Onosma frutescens</i> Lam.	Sarkıemcek	Non Endemic	NE	Hemicryptophyte	East Mediterranean	1,3	FO
BORAGİNACEAE	<i>Onosma taurica</i> Willd. var. <i>taurica</i>	Divanköşk	Non Endemic	NE	Hemicryptophyte	Irano-Turanian	1	FO
BRASSICACEAE	<i>Aethionema arabicum</i> (L.) Andr. ex DC.	Araptaşantası	Non Endemic	NE	Therophyte	Unknown	1	FO
BRASSICACEAE	<i>Alyssum desertorum</i> Stapf.	Dumanotu	Non Endemic	NE	Therophyte	Unknown	1	FO
BRASSICACEAE	<i>Alyssum murale</i> Waldts. & Kit var. <i>murale</i>	Sekikuduzotu	Non Endemic	NE	Hemicryptophyte	Unknown	1	FO
BRASSICACEAE	<i>Alyssum strigosum</i> subsp. <i>strigosum</i> Banks & Sol.	Dökükkuduzotu	Non Endemic	NE	Therophyte	Unknown	1	FO
BRASSICACEAE	<i>Arabis sagittata</i> (Bertol.) DC.	Temrentere	Non Endemic	NE	Therophyte	Unknown	1	FO
BRASSICACEAE	<i>Aubrieta pinardii</i> Boiss.	Hasobrizya	Endemic	LC	Hemicryptophyte	Unknown	1,3	FO
BRASSICACEAE	<i>Brassica elongata</i> Ehrh.	Uzunşalgam	Non Endemic	NE	Hemicryptophyte	Unknown	1	FO
BRASSICACEAE	<i>Capsella bursa-pastoris</i> (L.) Medik.	Çobançantası	Non Endemic	NE	Therophyte	Mediterranean	1,2	FO
BRASSICACEAE	<i>Chypeola jonthlaspi</i> L.	Akçeotu	Non Endemic	NE	Therophyte	Unknown	1	FO
BRASSICACEAE	<i>Diploxis tenuifolia</i> (L.) DC.	Türpenk	Non Endemic	NE	Hemicryptophyte	Unknown	1	FO
BRASSICACEAE	<i>Erysimum crassipes</i> Fisch. Et C.A. Mey.	Zarifeotu	Non Endemic	NE	Hemicryptophyte	Unknown	1,2	FO
BRASSICACEAE	<i>Hirschfeldia incana</i> (L.) Lag. - Foss.	Nadasturpu	Non Endemic	NE	Therophyte	Unknown	1	FO
BRASSICACEAE	<i>Isatis glauca</i> Aucher ex Boiss.	Soğutot	Non Endemic	NE	Hemicryptophyte	Unknown	1	FO
BRASSICACEAE	<i>Lepidium latifolium</i> L.	Nujdar	Non Endemic	NE	Hemicryptophyte	Unknown	1,2	FO
BRASSICACEAE	<i>Microthlaspi perfoliatum</i> (L.) F.K. Mey.	Giyle	Non Endemic	NE	Therophyte	Unknown	1,2	FO
BRASSICACEAE	<i>Nasturtium officinale</i> R. Br.	Suteresi	Non Endemic	NE	Hemicryptophyte	Unknown	1,2	FO
BRASSICACEAE	<i>Raphanus raphanistrum</i> L.	Eşekturpu	Non Endemic	NE	Therophyte	Unknown	1,2	FO
BRASSICACEAE	<i>Sinapis arvensis</i> L.	Hardal	Non Endemic	NE	Therophyte	Unknown	1,2	FO
BUTOMACEAE	<i>Butomus umbellatus</i> L.	Bataklıkgülü	Non Endemic	LC	Cryptophyte (Helophytes)	Euro-Siberian	1,2,3	FO
CAMPANULACEAE	<i>Asyneuma limonifolium</i> subsp. <i>pestalozzae</i> (Boiss.) Damboldt	Tavşankatırğı	Endemic	NE	Hemicryptophyte	Unknown	1,3	FO
CAMPANULACEAE	<i>Campanula cymbalaria</i> Sibth. & Sm.	Duldaçanı	Non Endemic	NE	Hemicryptophyte	East Mediterranean	1,3	FO
CAMPANULACEAE	<i>Campanula lyrata</i> Lam. subsp. <i>lyrata</i>	Memek	Non Endemic	NE	Hemicryptophyte	Unknown	1,2	FO
CAMPANULACEAE	<i>Legousia falcata</i> (Ten.) Fritsch ex Janch	Eğrikadınaynası	Non Endemic	NE	Therophyte	Mediterranean	1,3	FO
CAMPANULACEAE	<i>Legousia pentagonia</i> (L.) Theflung	Kadınaynası	Non Endemic	NE	Therophyte	East Mediterranean	1,2	FO
CANNABACEAE	<i>Celtis planchoniana</i> K.I.Chr.	Dahum	Non Endemic	NE	Phanerophyte	Unknown	1	FO
CAPRİFOLİACEAE	<i>Centranthus longiflorus</i> Stev. subsp. <i>longiflorus</i>	Mahmuzççeği	Non Endemic	NE	Hemicryptophyte	Irano-Turanian	1	FO
CAPRİFOLİACEAE	<i>Dipsacus laciniatus</i> L.	Fesçitarağı	Non Endemic	NE	Hemicryptophyte	Unknown	1	FO
CAPRİFOLİACEAE	<i>Knautia integrifolia</i> (L.) Bert.	Göttürotu	Non Endemic	NE	Therophyte	Mediterranean	2	FO
CAPRİFOLİACEAE	<i>Morina persica</i> L.	Merdivenççeği	Non Endemic	NE	Hemicryptophyte	Irano-Turanian	1,3	FO

CAPRIFOLIACEAE	<i>Scabiosa argentea</i> L.	Yazsüprügesi	Non Endemic	NE	Hemicryptophyte	Unknown	1,2	FO
CAPRIFOLIACEAE	<i>Scabiosa hololeuca</i> Bornm.	Yastıkuyuzotu	Endemic	EN	Hemicryptophyte	Irano-Turanian	3	FO
CAPRIFOLIACEAE	<i>Valeriana dioscoridis</i> Sm.	Çobanzurnası	Non Endemic	NE	Hemicryptophyte	East Mediterranean	1	FO
CARYOPHYLLACEAE	<i>Bolanthus minuartioides</i> (Jaub. & Spach) Hub. -Mor.	Havalotu	Endemic	NE	Cryptophyte (Geophyte)	Mediterranean	2	FO
CARYOPHYLLACEAE	<i>Cerastium banaticum</i> (Rochel) Steud.	Hasırboynuzotu	Non Endemic	LC	Hemicryptophyte	Unknown	1,2	ÜS1672
CARYOPHYLLACEAE	<i>Cerastium macranthum</i> Boiss.	Kababoynuzotu	Endemic	LC	Hemicryptophyte	Unknown	3	FO
CARYOPHYLLACEAE	<i>Dianthus micranthus</i> Boiss. & Heldr.	Kırkaranfili	Non Endemic	NE	Hemicryptophyte	Unknown	1,3	FO
CARYOPHYLLACEAE	<i>Dianthus zonatus</i> Fenzl	Kayakaranfili	Non Endemic	NE	Hemicryptophyte	Unknown	1,2,3	ÜS1675
CARYOPHYLLACEAE	<i>Eremogone ledebouriana</i> (Fenzl) Ikonn.	İğnekumotu	Endemic	LC	Chamaephyte	Unknown	1,2	FO
CARYOPHYLLACEAE	<i>Herniaria glabra</i> L.	Atyaran	Non Endemic	NE	Hemicryptophyte	Unknown	1	FO
CARYOPHYLLACEAE	<i>Holosteum umbellatum</i> L. var. <i>umbellatum</i>	Şeytänküpesi	Non Endemic	NE	Therophyte	Unknown	1	FO
CARYOPHYLLACEAE	<i>Minuartia anatolica</i> var. <i>arachnoidea</i> McNeill	Çengelstıstı	Endemic	NE	Hemicryptophyte	Irano-Turanian	2	FO
CARYOPHYLLACEAE	<i>Minuartia hirsuta</i> subsp. <i>falcata</i> (Gris.) Mattf.	Çengelstıstı	Non Endemic	NE	Hemicryptophyte	Unknown	1	FO
CARYOPHYLLACEAE	<i>Paronychia chionaea</i> subsp. <i>chionaea</i> var. <i>chionaea</i> Boiss.	Delikepekotu	Non Endemic	NE	Hemicryptophyte	Unknown	1,3	FO
CARYOPHYLLACEAE	<i>Paronychia dudleyi</i> Chaudhri	Özge Etyaran	Endemic	NE	Hemicryptophyte	Irano-Turanian	2	FO
CARYOPHYLLACEAE	<i>Saponaria prostrata</i> subsp. <i>prostrata</i> Willd.	Ebemerliđi	Endemic	LC	Hemicryptophyte	Irano-Turanian	2	FO
CARYOPHYLLACEAE	<i>Silene chlorifolia</i> Sm.	Puškullu	Non Endemic	NE	Therophyte	Irano-Turanian	2	ÜS 1653
CARYOPHYLLACEAE	<i>Silene compacta</i> Fisch. ex Hornem.	Salkımçıçeđi	Non Endemic	NE	Hemicryptophyte	Unknown	1	FO
CARYOPHYLLACEAE	<i>Silene dichotoma</i> Ehrh. subsp. <i>dichotoma</i>	Yemakılı	Non Endemic	NT	Therophyte	Unknown	1	FO
CARYOPHYLLACEAE	<i>Silene italica</i> subsp. <i>italica</i> (L.) Pers.	Yuđusyüređi	Non Endemic	NE	Hemicryptophyte	Mediterranean	1	FO
CARYOPHYLLACEAE	<i>Silene oreades</i> Boiss. & Heldr	Yernakılı	Endemic	NT	Hemicryptophyte	East Mediterranean	3	FO
CARYOPHYLLACEAE	<i>Silene squamigera</i> Boiss.	Pullunakıl	Non Endemic	NE	Therophyte	East Mediterranean	1,3	FO
CARYOPHYLLACEAE	<i>Silene vulgaris</i> (Moench) Garcke	Ecibücü	Non Endemic	NE	Chamaephyte	Unknown	1,3	FO
CARYOPHYLLACEAE	<i>Spergularia media</i> (L.) C. Presl	Kuşremilotu	Non Endemic	NE	Hemicryptophyte	Unknown	1	FO
CARYOPHYLLACEAE	<i>Vaccaria hispanica</i> (Mill.) Rauschert	Ekinebesi	Non Endemic	NE	Therophyte	Unknown	1	FO
CARYOPHYLLACEAE	<i>Velezia rigida</i> L.	Tıđotu	Non Endemic	NE	Therophyte	Unknown	2	FO
CELASTRACEAE	<i>Euonymus latifolius</i> (L.) Mill. subsp. <i>latifolius</i>	İđađacı	Non Endemic	NE	Phanerophyte	Euro-Siberian	1	FO
CERATOPHYLLACEAE	<i>Ceratophyllum demersum</i> L.	Kınalısuboynuzu	Non Endemic	LC	Cryptophyte (Hydrophyte)	Euro-Siberian	2,3	FO
CERATOPHYLLACEAE	<i>Ceratophyllum submersum</i> L.	Suboynuzu	Non Endemic	NE	Cryptophyte (Hydrophyte)	Euro-Siberian	1	FO
CHENOPODIACEAE	<i>Atriplex nitens</i> Schkuhr	Dađıspanađı	Non Endemic	NE	Therophyte	Unknown	1,2	FO
CHENOPODIACEAE	<i>Chenopodium album</i> L. subsp. <i>album</i> var. <i>album</i>	Aksirken	Non Endemic	NE	Therophyte	Unknown	1,2	FO
CHENOPODIACEAE	<i>Chenopodium ambrosioides</i> L.	Sirken	Non Endemic	NE	Therophyte	Unknown	1	FO
CİSTACEAE	<i>Cistus laurifolius</i> L.	Karađan	Non Endemic	NE	Phanerophyte	Mediterranean	1	FO
CİSTACEAE	<i>Fumana procumbens</i> (Dunal) Gren. & Godr.	Yergüneşotu	Non Endemic	NE	Chamaephyte	Unknown	1	FO
CİSTACEAE	<i>Helianthemum oelandicum</i> subsp. <i>incanum</i> (Willk.) G. López	Tüylüđüngülü	Non Endemic	NE	Hemicryptophyte	Unknown	1	FO
CONVOLVULACEAE	<i>Calystegia sepium</i> (L.) R.Br.	Çıtsarmaşıđı	Non Endemic	NE	Hemicryptophyte	Unknown	1	FO
CONVOLVULACEAE	<i>Convolvulus arvensis</i> L.	Tarlasarmaşıđı	Non Endemic	NE	Hemicryptophyte	Cosmopolitan	1,2	FO
CONVOLVULACEAE	<i>Convolvulus compactus</i> Boiss.	Bodurdolaşan	Non Endemic	NE	Hemicryptophyte	Irano-Turanian	1,3	FO
CONVOLVULACEAE	<i>Convolvulus lineatus</i> L.	Topyayılgan	Non Endemic	NE	Hemicryptophyte	Unknown	1	FO
CONVOLVULACEAE	<i>Cuscuta approximata</i> Bab.	Bađbođanotu	Non Endemic	NE	Vascular parasite	Unknown	2	FO
CONVOLVULACEAE	<i>Cuscuta campestris</i> Yancker	Kafırsacı	Non Endemic	NE	Vascular parasite	Unknown	1	FO
CORNACEAE	<i>Cornus mas</i> L.	Kızılçık	Non Endemic	NE	Phanerophyte	Euro-Siberian	1	FO
CRASSULACEAE	<i>Sedum acre</i> subsp. <i>acre</i> L.	Acıdamkoruđu	Non Endemic	NE	Chamaephyte	Unknown	1,2,3	FO

CRASSULACEAE	<i>Sedum pallidum</i> M. Bieb.	Koyunörmece	Non Endemic	NE	Therophyte	Euro-Siberian	1,2,3	FO
CRASSULACEAE	<i>Umbilicus luteus</i> (Huds.) Webb & Berthel	Sarıgöbekotu	Non Endemic	NE	Cryptophyte (Geophyte)	Unknown	1,2	FO
CUCURBITACEAE	<i>Bryonia multiflora</i> Boiss & Heldr	Ülüngür	Non Endemic	NE	Hemicryptophyte	Irano-Turanian	1	FO
CUCURBITACEAE	<i>Ecballium elaterium</i> (L.) A Rich	Eşekhiyarı	Non Endemic	NE	Cryptophyte (Geophyte)	Mediterranean	1,2	FO
CUPRESSACEAE	<i>Juniperus communis</i> L. var. <i>saxatilis</i> Pall	Bodurardıç	Non Endemic	NE	Phanerophyte	Unknown	1	FO
CUPRESSACEAE	<i>Juniperus excelsa</i> M. Bieb.	Bozardıç	Non Endemic	NE	Phanerophyte	Unknown	1,2,3	FO
CUPRESSACEAE	<i>Juniperus foetidissima</i> Willd.	Kokarardıç	Non Endemic	NE	Phanerophyte	Unknown	1	FO
CUPRESSACEAE	<i>Juniperus oxycedrus</i> L. subsp. <i>oxycedrus</i>	Katranardıç	Non Endemic	NE	Phanerophyte	Unknown	1,2	FO
CYPERACEAE	<i>Bolboschoenus maritimus</i> subsp. <i>maritimus</i> (L.) Palla	Sandalyesazı	Non Endemic	NE	Hemicryptophyte	Unknown	3	FO
CYPERACEAE	<i>Carex distans</i> subsp. <i>distans</i> L.	Sinaayakotu	Non Endemic	NE	Cryptophyte (Geophyte)	Euro-Siberian	1,3	FO
CYPERACEAE	<i>Carex divulsa</i> Stokes subsp. <i>divulsa</i>	Ayakotu	Non Endemic	NE	Cryptophyte (Geophyte)	Unknown	1	FO
CYPERACEAE	<i>Carex hordeistichos</i> Vill.	Arpaçayırsacı	Non Endemic	NE	Cryptophyte (Helophytes)	Unknown	1	FO
CYPERACEAE	<i>Eleocharis palustris</i> subsp. <i>palustris</i> (L.) Roem. & Schult.	Delisaz	Non Endemic	NE	Cryptophyte (Helophytes)	Unknown	1,2,3	FO
CYPERACEAE	<i>Schoenoplectus litoralis</i> subsp. <i>litoralis</i> (Schrad.) Palla	Gölsemerotu	Non Endemic	NE	Cryptophyte (Helophytes)	Unknown	1,2,3	FO
CYPERACEAE	<i>Scirpoides holoschoenus</i> subsp. <i>holoschoenus</i> (L.) Soják	Vurla	Non Endemic	NE	Cryptophyte (Helophytes)	Unknown	1,2,3	FO
DENNSTAEDTIACEAE	<i>Pteridium aquilinum</i> (L.) Kuhn	Eğrelti	Non Endemic	NE	Hemicryptophyte	Unknown	1,3	FO
ELAEAGNACEAE	<i>Elaeagnus angustifolia</i> L.	İğde	Non Endemic	NE	Phanerophyte	Unknown	1	FO
EPHEDRACEAE	<i>Ephedra major</i> Host subsp. <i>major</i>	Hum	Non Endemic	NE	Phanerophyte	Mediterranean	1	FO
EQUISETACEAE	<i>Equisetum arvense</i> L.	Atkuyruğu	Non Endemic	NE	Cryptophyte (Geophyte)	Unknown	1	FO
EQUISETACEAE	<i>Equisetum palustre</i> L.	Kırkbacak	Non Endemic	NE	Cryptophyte (Geophyte)	Unknown	1	FO
EUPHORBIACEAE	<i>Euphorbia anacamperos</i> Boiss. var. <i>anacamperos</i>	Sütleşen	Endemic	LC	Hemicryptophyte	Unknown	1,3	FO
EUPHORBIACEAE	<i>Euphorbia herniariifolia</i> var. <i>herniariifolia</i> Willd.	Boncuksütleşeni	Non Endemic	NE	Therophyte	Unknown	1	FO
EUPHORBIACEAE	<i>Euphorbia kotschyana</i> Fenzl	Sütlüce	Non Endemic	NE	Therophyte	East Mediterranean	1,2,3	FO
EUPHORBIACEAE	<i>Euphorbia macroclada</i> Boiss.	Nebül	Non Endemic	NE	Therophyte	Irano-Turanian	1,2,3	FO
EUPHORBIACEAE	<i>Euphorbia platyphyllos</i> L.	Kocasütleşen	Non Endemic	NE	Therophyte	Unknown	1	FO
FABACEAE	<i>Alhagi maurorum</i> Medik.	Aguldikeni	Non Endemic	NE	Hemicryptophyte	Irano-Turanian	1	FO
FABACEAE	<i>Astragalus angustifolius</i> subsp. <i>angustifolius</i> Lam.	Keçiğeveni	Non Endemic	NE	Chamaephyte	Unknown	1	FO
FABACEAE	<i>Astragalus mesogitanus</i> Boiss.	Aydingeveni	Endemic	NE	Chamaephyte	Irano-Turanian	1	FO
FABACEAE	<i>Astragalus microcephalus</i> subsp. <i>microcephalus</i> Willd.	Anadolukitresi	Non Endemic	NE	Chamaephyte	Irano-Turanian	1,3	FO
FABACEAE	<i>Astragalus odoratus</i> Lam.	Miskgeveni	Non Endemic	NE	Chamaephyte	Unknown	1,3	FO
FABACEAE	<i>Astragalus ptilodes</i> Boiss.	Sipilgeveni	Non Endemic	NE	Chamaephyte	Unknown	1,3	FO
FABACEAE	<i>Astragalus wiedemannianus</i> Fischer	Karingeveni	Non Endemic	NE	Chamaephyte	Irano-Turanian	1,2,3	FO
FABACEAE	<i>Colutea melanocalyx</i> Boiss. & Heldr. subsp. <i>melanocalyx</i>	Karapatlangaç	Endemic	LC	Phanerophyte	East Mediterranean	1	FO
FABACEAE	<i>Cytisus hirsutus</i> L.	Keçitürlü	Non Endemic	NE	Chamaephyte	Unknown	1	FO
FABACEAE	<i>Dorycnium pentaphyllum</i> subsp. <i>haussknechtii</i> (Boiss.) Gams	Gervenük	Endemic	NE	Hemicryptophyte	Unknown	2	FO
FABACEAE	<i>Galega officinalis</i> L.	Keçisedefi	Non Endemic	NE	Hemicryptophyte	Euro-Siberian	1	FO
FABACEAE	<i>Genista albida</i> Willd.	Akborcak	Non Endemic	NE	Chamaephyte	Unknown	1	FO
FABACEAE	<i>Hedysarum varium</i> Willd.	Batalak	Non Endemic	NE	Hemicryptophyte	Irano-Turanian	1	FO
FABACEAE	<i>Lathyrus aphaca</i> L.	Sarıburçak	Non Endemic	NE	Therophyte	Unknown	1	FO
FABACEAE	<i>Lotus corniculatus</i> var. <i>corniculatus</i> L.	Gazalboynuzu	Non Endemic	NE	Hemicryptophyte	Unknown	1,2	ÜS1680
FABACEAE	<i>Medicago fischeriana</i> (Ser.) Trautv.	Mızrakyonca	Non Endemic	NE	Therophyte	Irano-Turanian	1	FO
FABACEAE	<i>Medicago orbicularis</i> (L.) Bart.	Paralık	Non Endemic	NE	Therophyte	Unknown	1	FO
FABACEAE	<i>Medicago rostrata</i> (Boiss. & Balansa) E. Small	niğdeyonca	Endemic	NE	Therophyte	Unknown	2	FO

FABACEAE	<i>Medicago sativa</i> L. subsp. <i>sativa</i>	Karayonca	Non Endemic	NE	Therophyte	Unknown	1	FO
FABACEAE	<i>Melilotus bicolor</i> Boiss. & Balansa	hercaiyonca	Endemic	NT	Therophyte	Irano-Turanian	2	FO
FABACEAE	<i>Melilotus officinalis</i> (L.) Desr.	Kokuluyonca	Non Endemic	NE	Therophyte	Unknown	1,2	FO
FABACEAE	<i>Onobrychis oxydonta</i> var. <i>armena</i> (Boiss. & Huet) Aktoklu	Korunga	Non Endemic	LC	Hemicryptophyte	Unknown	1,2,3	FO
FABACEAE	<i>Ononis spinosa</i> L.	Kayışkırın	Non Endemic	NE	Chamaephyte	Unknown	1,2,3	FO
FABACEAE	<i>Securigera parviflora</i> (Desv.) Lassen	Bahçetacı	Non Endemic	NE	Therophyte	East Mediterranean	1	FO
FABACEAE	<i>Securigera varia</i> (L.) Lassen	Körigen	Non Endemic	NE	Hemicryptophyte	East Mediterranean	1	FO
FABACEAE	<i>Sphaerophysa kotschyana</i> Boiss.	Hürmüzotu	Endemic	LC	Hemicryptophyte	Irano-Turanian	1	FO
FABACEAE	<i>Tetragonolobus maritimus</i> (L.) Roth	Canavardışı	Non Endemic	NE	Hemicryptophyte	Unknown	1,3	FO
FABACEAE	<i>Trifolium campestre</i> Schreb.	Üçgül	Non Endemic	NE	Therophyte	Unknown	1	FO
FABACEAE	<i>Trifolium fragiferum</i> L. var. <i>fragiferum</i>	Çilektüçgülü	Non Endemic	NE	Hemicryptophyte	Unknown	1,2	FO
FABACEAE	<i>Trifolium grandiflorum</i> Schreb.	Hanmüçgülü	Non Endemic	NE	Therophyte	East Mediterranean	1,3	FO
FABACEAE	<i>Trifolium nigrescens</i> subsp. <i>petrisavii</i> (Clementi) Holmboe	Yelüçgülü	Non Endemic	NE	Therophyte	Unknown	1	FO
FABACEAE	<i>Trifolium pratense</i> L. var. <i>pratense</i>	Çayırçülü	Non Endemic	NE	Hemicryptophyte	Unknown	1,2	FO
FABACEAE	<i>Trifolium resupinatum</i> var. <i>resupinatum</i> L.	Anadolüçgülü	Non Endemic	NE	Therophyte	Unknown	1	FO
FABACEAE	<i>Trifolium stellatum</i> L. var. <i>stellatum</i>	Yıldzyonca	Non Endemic	NE	Therophyte	Unknown	1,2	FO
FABACEAE	<i>Trifolium tomentosum</i> L.	Yünlüyonca	Non Endemic	NE	Therophyte	Unknown	1	FO
FABACEAE	<i>Tripleurospermum callosum</i> (Boiss. & Heldr.) E. Hossain	Göde	Endemic	NE	Hemicryptophyte	Unknown	2	FO
FABACEAE	<i>Vicia cracca</i> subsp. <i>stenophylla</i> Vel.	Meşefiği	Non Endemic	NE	Hemicryptophyte	Unknown	1,2	FO
FABACEAE	<i>Vicia hybrida</i> L.	Melezbakla	Non Endemic	NE	Therophyte	Unknown	1,2	FO
FABACEAE	<i>Vuralia turcica</i> (Kit Tan, Vural & Küçükdökük) Uysal & Ertuğrul	Piyan	Endemic	CR	Cryptophyte (Geophyte)	East Mediterranean	1	FO
FAGACEAE	<i>Quercus cerris</i> L.	Saçlımeşe	Non Endemic	NE	Phanerophyte	Mediterranean	1	FO
FAGACEAE	<i>Quercus coccifera</i> L.	Kermesmeşe	Non Endemic	NE	Phanerophyte	Mediterranean	1,2	FO
FAGACEAE	<i>Quercus infectoria</i> Oliv. subsp. <i>veneris</i> (A. Kern.) Meikle	Mazmeşesi	Non Endemic	NE	Phanerophyte	Unknown	1	FO
FAGACEAE	<i>Quercus pubescens</i> Willd.	Tüylü Meşe	Non Endemic	NE	Phanerophyte	Unknown	2	FO
GENTIANACEAE	<i>Centaurium erythraea</i> Rafn.	Kırmızıkantaron	Non Endemic	NE	Therophyte	Euro-Siberian	1	FO
GENTIANACEAE	<i>Centaurium pulchellum</i> (Sw.) Druce	Pembetukul	Non Endemic	NE	Therophyte	Unknown	1	FO
GERANIACEAE	<i>Erodium cicutarium</i> (L.) L' Her. subsp. <i>cicutarium</i>	iğnelik Göster	Non Endemic	NE	Therophyte	Unknown	1,2	FO
GERANIACEAE	<i>Geranium lucidum</i> L.	Dakkaotu	Non Endemic	NE	Therophyte	Unknown	1,2	ÜS 1662
GERANIACEAE	<i>Geranium purpureum</i> Vill.	Ebedön	Non Endemic	NE	Therophyte	Unknown	1,2,3	FO
HALORAGACEAE	<i>Myriophyllum spicatum</i> L.	Başaklısucivanpe rçemi	Non Endemic	LC	Cryptophyte (Hydrophyte)	Unknown	1,2,3	FO
HALORAGACEAE	<i>Myriophyllum verticillatum</i> L.	Halkalısucivanpe rçemi	Non Endemic	LC	Cryptophyte (Hydrophyte)	Unknown	1,2,3	FO
HYDROCHARITACEAE	<i>Hydrocharis morsus-ranae</i> L.	Kurbağazehiri	Non Endemic	NE	Cryptophyte (Hydrophyte)	Unknown	1,2,3	FO
HYDROCHARITACEAE	<i>Najas marina</i> L.	Dikenlisuperisi	Non Endemic	NE	Cryptophyte (Hydrophyte)	Cosmopolitan	1	FO
HYPERICACEAE	<i>Hypericum origanifolium</i> L.	Lüferotu	Non Endemic	NE	Hemicryptophyte	Irano-Turanian	1	FO
HYPERICACEAE	<i>Hypericum perforatum</i> L.	Binbirdelikotu	Non Endemic	NE	Hemicryptophyte	Mediterranean	1	FO
IRIDACEAE	<i>Iris orientalis</i> Mill.	Ankarasüseni	Non Endemic	NE	Cryptophyte (Geophyte)	Unknown	1,3	FO
IRIDACEAE	<i>Iris pseudacorus</i> L.	Bataksüseni	Non Endemic	NE	Cryptophyte (Geophyte)	Unknown	1,3	FO
JUNCACEAE	<i>Juncus articulatus</i> subsp. <i>articulatus</i> L.	Çamışotu	Non Endemic	NE	Cryptophyte (Helophytes)	Euro-Siberian	1,3	FO
JUNCACEAE	<i>Juncus bufonius</i> L.	Kamır	Non Endemic	NE	Therophyte	Unknown	1	FO
JUNCACEAE	<i>Juncus fontanesii</i> J. Gay ex Laharpe	Allı Kofa	Non Endemic	LC	Cryptophyte (Helophytes)	Unknown	2	ÜS1673
JUNCACEAE	<i>Juncus inflexus</i> L.	Sazak	Non Endemic	NE	Cryptophyte (Helophytes)	Unknown	1,2	FO
JUNGLANDACEAE	<i>Juglans regia</i> L.	Ceviz	Non Endemic	NE	Phanerophyte	Unknown	2	FO

LAMIACEAE	<i>Ajuga chamaepitys</i> (L.) Schreb.	Acıgıcı	Non Endemic	NE	Hemicryptophyte	Unknown	1,2,3	FO
LAMIACEAE	<i>Clinopodium graveolens</i> subsp. <i>graveolens</i> (M. Bieb.) Kuntze	Filiskin	Non Endemic	NE	Hemicryptophyte	Unknown	1	FO
LAMIACEAE	<i>Lamium amplexicaule</i> L. var. <i>amplexicaule</i>	Baltutan	Non Endemic	NE	Therophyte	Unknown	1	FO
LAMIACEAE	<i>Lamium garganicum</i> L.	Bol Balıcaık	Non Endemic	NE	Hemicryptophyte	Euro-Siberian	2	ÜS 1654
LAMIACEAE	<i>Lamium orientale</i> (Fisch. & C.A. Mey.) E.H.L. Krause	Güzelve	Non Endemic	NE	Therophyte	Irano-Turanian	3	FO
LAMIACEAE	<i>Lycopus europaeus</i> L.	Kurtayağı	Non Endemic	NE	Hemicryptophyte	Euro-Siberian	1,2,3	ÜS1679
LAMIACEAE	<i>Marrubium anisodon</i> K. Koch	Yayotu	Non Endemic	NE	Hemicryptophyte	Unknown	1,3	FO
LAMIACEAE	<i>Marrubium parviflorum</i> Fisch. & C.A. Mey.	Bozotu	Non Endemic	NE	Hemicryptophyte	Irano-Turanian	2	FO
LAMIACEAE	<i>Melissa officinalis</i> L.	Oğulotu	Non Endemic	NE	Hemicryptophyte	Euro-Siberian	1	FO
LAMIACEAE	<i>Mentha aquatica</i> L.	Sunanesi	Non Endemic	NE	Hemicryptophyte	Unknown	1	FO
LAMIACEAE	<i>Mentha longifolia</i> subsp. <i>typhoides</i> (Briq.) Harley	Derenanesi	Non Endemic	NE	Hemicryptophyte	Unknown	1,2	FO
LAMIACEAE	<i>Mentha pulegium</i> L.	Yarpuz	Non Endemic	NE	Hemicryptophyte	Unknown	1	FO
LAMIACEAE	<i>Mentha spicata</i> L.	Eşek Nanesi	Non Endemic	NE	Hemicryptophyte	Unknown	2	FO
LAMIACEAE	<i>Nepeta italica</i> L.	Eşekçayı	Non Endemic	NE	Hemicryptophyte	Mediterranean	1,2,3	FO
LAMIACEAE	<i>Nepeta nuda</i> subsp. <i>nuda</i> L.	Morküncü	Non Endemic	NE	Hemicryptophyte	Euro-Siberian	1,2,3	ÜS 1648
LAMIACEAE	<i>Origanum sipyleum</i> L.	Mormercan	Endemic	LC	Chamaephyte	East Mediterranean	2	FO
LAMIACEAE	<i>Origanum vulgare</i> L. subsp. <i>hirtum</i> (Link) Ietsw.	Karamercan	Non Endemic	NE	Hemicryptophyte	East Mediterranean	1	FO
LAMIACEAE	<i>Phlomis armeniaca</i> Willd.	Bozşavlak	Non Endemic	NE	Hemicryptophyte	Irano-Turanian	1,2	FO
LAMIACEAE	<i>Phlomis linearis</i> Boiss. & Balansa	Yaylaotu	Endemic	LC	Hemicryptophyte	Irano-Turanian	1	FO
LAMIACEAE	<i>Phlomis pungens</i> var. <i>pungens</i> Willd.	Silvanok	Non Endemic	NE	Hemicryptophyte	Unknown	1	FO
LAMIACEAE	<i>Salvia absconditiflora</i> (Montbret & Aucher ex Benth.) Greuter & Burdet	Karaot	Endemic	LC	Hemicryptophyte	Irano-Turanian	1,2,3	FO
LAMIACEAE	<i>Salvia aethiops</i> L.	Habeşadaçayı	Non Endemic	NE	Hemicryptophyte	Unknown	1,3	FO
LAMIACEAE	<i>Salvia candidissima</i> Vahl	Galabor	Non Endemic	NE	Hemicryptophyte	Irano-Turanian	2	ÜS1668
LAMIACEAE	<i>Salvia pisidica</i> Boiss. & Heldr. ex Benth.	Benli Şalba	Endemic	LC	Chamaephyte	Mediterranean	2	ÜS1674
LAMIACEAE	<i>Salvia tomentosa</i> Mill.	Şalba	Non Endemic	NE	Chamaephyte	Mediterranean	2	ÜS 1649
LAMIACEAE	<i>Salvia virgata</i> Jacq.	Fatmanaotu	Non Endemic	NE	Hemicryptophyte	Irano-Turanian	1	FO
LAMIACEAE	<i>Scutellaria orientalis</i> L. subsp. <i>pinnatifida</i> J.R. Edm.	Kırbaçsırımı	Non Endemic	NE	Hemicryptophyte	Unknown	1,3	FO
LAMIACEAE	<i>Sideritis montana</i> L.	Karaçay	Non Endemic	NE	Therophyte	East Mediterranean	1,2	FO
LAMIACEAE	<i>Stachys annua</i> (L.) L.	Haciosmanotu	Non Endemic	NE	Therophyte	Irano-Turanian	2	ÜS1669
LAMIACEAE	<i>Stachys cretica</i> L. subsp. <i>anatolica</i> Rech.fil	Yağlıkara	Endemic	LC	Hemicryptophyte	Unknown	1,2,3	ÜS 1665, ÜS1666
LAMIACEAE	<i>Stachys palustris</i> L.	Gölisırganı	Non Endemic	NE	Hemicryptophyte	Euro-Siberian	1	FO
LAMIACEAE	<i>Teucrium chamaedrys</i> L.	Kısamahmur	Non Endemic	NE	Chamaephyte	Irano-Turanian	1,2,3	FO
LAMIACEAE	<i>Teucrium polium</i> L.	Acıyavşan	Non Endemic	NE	Chamaephyte	Unknown	1,3	FO
LAMIACEAE	<i>Thymus leucostomus</i> Hausskn. & Velen	Anakekik	Endemic	LC	Chamaephyte	Irano-Turanian	1	ÜS1676
LAMIACEAE	<i>Thymus longicaulis</i> C. Presl subsp. <i>chaubardii</i> (Rech.f.) Jalas	Dağkekikiği	Non Endemic	NE	Chamaephyte	Mediterranean	1,2,3	FO
LAMIACEAE	<i>Ziziphora capitata</i> L.	Anuk	Non Endemic	NE	Therophyte	Unknown	3	FO
LAMIACEAE	<i>Ziziphora taurica</i> subsp. <i>taurica</i> M. Bieb.	Çölreyhanı	Non Endemic	NE	Therophyte	Unknown	1	FO
LAMIACEAE	<i>Ziziphora tenuior</i> L.	Fareotu	Non Endemic	NE	Therophyte	Irano-Turanian	1	FO
LENTİBULARİACEAE	<i>Utricularia australis</i> R.Br.	Durgun Sumiğferi	Non Endemic	LC	Cryptophyte (Hydrophyte)	Euro-Siberian	3	FO
LENTİBULARİACEAE	<i>Utricularia vulgaris</i> L.	Sumiğferi	Non Endemic	LC	Cryptophyte (Hydrophyte)	Euro-Siberian	1,2	FO
LİLİACEAE	<i>Gagea bithynica</i> Pasch.	Çamyıldızı	Endemic	LC	Cryptophyte (Geophyte)	East Mediterranean	2	FO
LİLİACEAE	<i>Gagea foliosa</i> (C. Presl) Schult. & Schult.f.	Yaprakhyıldız	Non Endemic	NE	Cryptophyte (Geophyte)	Unknown	1	FO

LİNACEAE	<i>Linum hirsutum</i> L. subsp. <i>anatolicum</i> (Boiss.) Hayek var. <i>anatolicum</i>	Keten	Endemic	LC	Hemicryptophyte	Irano-Turanian	1,3	FO
LİNACEAE	<i>Linum hirsutum</i> subsp. <i>pseudoanatolicum</i> P.H. Davis	Bozkır Keteni	Endemic	LC	Hemicryptophyte	Irano-Turanian	2	FO
LİNACEAE	<i>Linum tenuifolium</i> L.	Narinketen	Non Endemic	NE	Hemicryptophyte	Unknown	1	FO
LYTRACEAE	<i>Lythrum salicaria</i> L.	Hevhulma	Non Endemic	NE	Hemicryptophyte	Euro-Siberian	1,2	FO
MALVACEAE	<i>Alcea biennis</i> Winterl	Fatmaanothu	Non Endemic	NE	Hemicryptophyte	Unknown	1,2	FO
MALVACEAE	<i>Alcea setosa</i> (Boiss.) Alef.	Hitmiyeçeği	Non Endemic	NE	Hemicryptophyte	East Mediterranean	3	FO
MALVACEAE	<i>Althaea officinalis</i> L.	Delihatmi	Non Endemic	NE	Hemicryptophyte	Unknown	1,2	FO
MALVACEAE	<i>Malva neglecta</i> Wallr.	Çobançořeği	Non Endemic	NE	Hemicryptophyte	Unknown	1,2,3	FO
MALVACEAE	<i>Malva sylvestris</i> L.	Ebegümcei	Non Endemic	NE	Hemicryptophyte	Unknown	1	FO
MORACEAE	<i>Ficus carica</i> L. subsp. <i>carica</i>	İncir	Non Endemic	NE	Phanerophyte	Mediterranean	1	FO
MORACEAE	<i>Morus alba</i> L.	Dut	Non Endemic	NE	Phanerophyte	Unknown	1	FO
NİTRARİACEAE	<i>Peganum harmala</i> L.	Üzerlik	Non Endemic	NE	Hemicryptophyte	Unknown	1,2,3	FO
NYMPHAEACEAE	<i>Nymphaea alba</i> L.	Nilüfer	Non Endemic	LC	Cryptophyte (Hydrophyte)	Unknown	1,2,3	FO
OLEACEAE	<i>Fraxinus angustifolia</i> subsp. <i>angustifolia</i> Vahl	Sivridişbudak	Non Endemic	NE	Phanerophyte	Unknown	1,3	FO
OLEACEAE	<i>Jasminum fruticans</i> L.	Boruk	Non Endemic	NE	Phanerophyte	Mediterranean	1,2	FO
OLEACEAE	<i>Ligustrum vulgare</i> L.	Kurtbağrı	Non Endemic	NE	Phanerophyte	Euro-Siberian	1	FO
OLEACEAE	<i>Olea europaea</i> L. var. <i>sylvestris</i> (Miller) Lehr.	Zeytin	Non Endemic	NE	Phanerophyte	Mediterranean	1	FO
ONAGRACEAE	<i>Epilobium hirsutum</i> L.	Hasanhüseyniçe eği	Non Endemic	NE	Hemicryptophyte	Unknown	1,2	FO
ONAGRACEAE	<i>Oenothera biennis</i> L.	Ezaniçeği	Non Endemic	NE	Chamaephyte	Unknown	1	FO
ORCHIDACEAE	<i>Cephalanthera epipactoides</i> Fisch & C.A. Mey.	Anaçmçeği	Non Endemic	NE	Cryptophyte (Geophyte)	East Mediterranean	1	FO
ORCHIDACEAE	<i>Orchis palustris</i> Jacq.	Çayırsalebi	Non Endemic	NE	Cryptophyte (Geophyte)	Unknown	1,2	FO
OROBANCHACEAE	<i>Odontites vulgaris</i> Moench	Davunotu	Non Endemic	NE	Therophyte	Euro-Siberian	1	FO
PAEONIACEAE	<i>Paeonia mascula</i> (L.) Mill. subsp. <i>mascula</i>	Ayığılü	Non Endemic	NE	Cryptophyte (Geophyte)	Unknown	1	FO
PAPAVERACEAE	<i>Corydalis solida</i> (L.) Clairv. subsp. <i>solida</i>	Rumelikazgagası	Non Endemic	NE	Cryptophyte (Geophyte)	Unknown	1	FO
PAPAVERACEAE	<i>Fumaria officinalis</i> subsp. <i>cilicica</i> (Hausskn.) Lidén	Yersofrası	Non Endemic	NE	Therophyte	Irano-Turanian	1	FO
PAPAVERACEAE	<i>Glaucium grandiflorum</i> subsp. <i>refractum</i> (Nábelek) Mory	Alagögündürme	Non Endemic	NE	Therophyte	Irano-Turanian	1,2	FO
PAPAVERACEAE	<i>Glaucium leiocarpum</i> Boiss.	Gavurhaşası	Non Endemic	NE	Hemicryptophyte	Unknown	1,2	FO
PAPAVERACEAE	<i>Hypocoum pendulum</i> L.	Tarladığmeciği	Non Endemic	NE	Therophyte	Unknown	1,3	FO
PAPAVERACEAE	<i>Hypocoum pseudograndiflorum</i> Petrovic	Hidrellezotu	Non Endemic	NE	Therophyte	Unknown	1	FO
PAPAVERACEAE	<i>Papaver dubium</i> L.	Köpekyacı	Non Endemic	NE	Therophyte	Unknown	2	ÜS 1661
PAPAVERACEAE	<i>Papaver rhoas</i> L.	Gelincil	Non Endemic	NE	Therophyte	Unknown	1	FO
PİNACEAE	<i>Cedrus libani</i> A. Rich.	Sedir	Non Endemic	NE	Phanerophyte	Mediterranean	1	FO
PİNACEAE	<i>Pinus nigra</i> subsp. <i>pallasiana</i> (Lamb.) Holmboe	Karaçam	Non Endemic	NE	Phanerophyte	Euro-Siberian	1,2,3	FO
PİNACEAE	<i>Pinus sylvestris</i> L. var. <i>hamata</i> Steven	Sarıçam	Non Endemic	NE	Phanerophyte	Euro-Siberian	1	FO
PLANTAGİNACEAE	<i>Chaenorhinum minus</i> subsp. <i>minus</i> (L.) Lange	Balıkağzı	Non Endemic	NE	Therophyte	Unknown	2	ÜS1670
PLANTAGİNACEAE	<i>Digitalis ferruginea</i> L. subsp. <i>ferruginea</i>	Arikovani	Non Endemic	NE	Hemicryptophyte	Unknown	1	FO
PLANTAGİNACEAE	<i>Digitalis lamarckii</i> Ivanina	Yüksükotu	Endemic	LC	Hemicryptophyte	Euro-Siberian	2	FO
PLANTAGİNACEAE	<i>Globularia orientalis</i> L.	Küreçeği	Non Endemic	NE	Chamaephyte	Irano-Turanian	1,2,3	FO
PLANTAGİNACEAE	<i>Hippuris vulgaris</i> L.	Kısrakuyruğu	Non Endemic	NE	Cryptophyte (Helophytes)	Unknown	1	FO
PLANTAGİNACEAE	<i>Linaria grandiflora</i> Desf.	Kocaslanağı	Non Endemic	NE	Hemicryptophyte	Unknown	1	FO
PLANTAGİNACEAE	<i>Plantago lanceolata</i> L.	Damarlıca	Non Endemic	NE	Hemicryptophyte	Unknown	1,2,3	FO
PLANTAGİNACEAE	<i>Plantago major</i> L.	Sinirotu	Non Endemic	NE	Hemicryptophyte	Unknown	1,2	FO
PLANTAGİNACEAE	<i>Veronica anagallis-aquatica</i> L.	Sugedemesi	Non Endemic	NE	Hemicryptophyte	Unknown	1,2	FO

PLANTAGINACEAE	<i>Veronica anagalloides</i> Guss.	Sucamağı	Non Endemic	NE	Therophyte	Unknown	1,2	FO
PLANTAGINACEAE	<i>Veronica biloba</i> Schreber	Çiftemaviş	Non Endemic	NE	Therophyte	Irano-Turanian	1	FO
PLANTAGINACEAE	<i>Veronica chamaedrys</i> L.	Cancan	Non Endemic	NE	Hemicryptophyte	Euro-Siberian	1,2	FO
PLUMBAGINACEAE	<i>Acantholimon ulicinum</i> var. <i>ulicinum</i> (Willd. ex Schultes) Boiss.	Kardikeni	Non Endemic	NE	Chamaephyte	East Mediterranean	1,3	FO
PLUMBAGINACEAE	<i>Limonium lilacinum</i> (Boiss. & Balansa) Wagenitz	Çoraklavantası	Endemic	LC	Hemicryptophyte	Irano-Turanian	1	FO
PLUMBAGINACEAE	<i>Plumbago europaea</i> L.	Karakına	Non Endemic	NE	Hemicryptophyte	Euro-Siberian	1	FO
POACEAE	<i>Aegilops umbellulata</i> Zhukovsky	Hanımbuğdayı	Non Endemic	NE	Therophyte	Irano-Turanian	1,2	FO
POACEAE	<i>Aeluropus litoralis</i> (Gouan) Parl.	Sahilyarığı	Non Endemic	NE	Therophyte	Unknown	1	FO
POACEAE	<i>Agrostis stolonifera</i> L.	Tavusotu	Non Endemic	NE	Therophyte	Euro-Siberian	1	FO
POACEAE	<i>Alopecurus arundinaceus</i> Poir.	kamiş tilkikuyruğu	Non Endemic	NE	Cryptophyte (Geophyte)	Euro-Siberian	2	FO
POACEAE	<i>Alopecurus myosuroides</i> Huds.	Tarlatilkikuyruğu	Non Endemic	NE	Therophyte	Euro-Siberian	1	FO
POACEAE	<i>Briza humilis</i> M. Bieb.	Kadındılı	Non Endemic	NE	Therophyte	Unknown	1	FO
POACEAE	<i>Bromus tectorum</i> L.	Kırbromu	Non Endemic	NE	Therophyte	Unknown	1,2	FO
POACEAE	<i>Cynodon dactylon</i> (L.) Pers.	Köpekdişi	Non Endemic	NE	Therophyte	Unknown	1,2	FO
POACEAE	<i>Dactylis glomerata</i> L. subsp. <i>hispanica</i> (Roth) Nyman	Killidomuzarığı	Non Endemic	NE	Hemicryptophyte	Unknown	1,2	FO
POACEAE	<i>Elymus elongatus</i> (Host) Runemark	Putao tu	Non Endemic	NE	Hemicryptophyte	Unknown	1	FO
POACEAE	<i>Festuca arundinacea</i> subsp. <i>arundinacea</i>	Kamişyumağı	Non Endemic	NE	Hemicryptophyte	Unknown	1	FO
POACEAE	<i>Hordeum murinum</i> L. subsp. <i>leporinum</i> (Link.) Arc. var. <i>leporinum</i>	Kılıçkarpa	Non Endemic	NE	Therophyte	Irano-Turanian	1,2	FO
POACEAE	<i>Phalaris arundinacea</i> L.	kanyaş	Non Endemic	NE	Cryptophyte (Geophyte)	Unknown	2	FO
POACEAE	<i>Phalaris paradoxa</i> L.	Topuzlukanyaş	Non Endemic	NE	Therophyte	Mediterranean	1	FO
POACEAE	<i>Phragmites australis</i> (Cav.) Trin. ex Steud.	Kamişyumağı	Non Endemic	LC	Cryptophyte (Helophytes)	Euro-Siberian	1,2,3	FO
POACEAE	<i>Poa bulbosa</i> L.	Yumrulusalakım	Non Endemic	NE	Hemicryptophyte	Unknown	1,2	FO
POACEAE	<i>Poa trivialis</i> L.	Kabasalkımotu	Non Endemic	NE	Hemicryptophyte	Unknown	1	FO
POACEAE	<i>Polypogon monspeliensis</i> (L.) Desf.	Hitir	Non Endemic	NE	Therophyte	Unknown	1,2,3	FO
POACEAE	<i>Puccinellia distans</i> (Jacq.) Parl.	Ayrıktuzçimi	Non Endemic	NE	Hemicryptophyte	Unknown	1	FO
POACEAE	<i>Stipa holosericea</i> Trin.	Dirgenkilaç	Non Endemic	NE	Hemicryptophyte	Irano-Turanian	1,3	FO
POLYGALACEAE	<i>Polygala pruinosa</i> Boiss. subsp. <i>pruinosa</i>	Pulusütotu	Non Endemic	NE	Hemicryptophyte	Unknown	1	FO
POLYGONACEAE	<i>Atraphaxis billardieri</i> Jaub. & Spach	Tekebuğdayı	Non Endemic	NE	Hemicryptophyte	Irano-Turanian	1,3	FO
POLYGONACEAE	<i>Polygonum amphibium</i> L.	Yerdeğıştiren	Non Endemic	NE	Cryptophyte (Geophyte)	Unknown	1,2,3	FO
POLYGONACEAE	<i>Polygonum cognatum</i> Meissn.	Madımak	Non Endemic	NE	Hemicryptophyte	Unknown	1,2	ÜS1667
POLYGONACEAE	<i>Rumex acetosella</i> L.	Kuzukulağı	Non Endemic	NE	Hemicryptophyte	Unknown	1	FO
POLYGONACEAE	<i>Rumex crispus</i> L.	Labada	Non Endemic	NE	Hemicryptophyte	Unknown	1	FO
POLYGONACEAE	<i>Rumex scutatus</i> L.	ekşimen	Non Endemic	NE	Chamaephyte	Unknown	2	ÜS1671
PORTULACEAE	<i>Portulaca oleracea</i> L.	Semizotu	Non Endemic	NE	Therophyte	Unknown	1,2	FO
POTAMOGETONACEAE	<i>Groenlandia densa</i> (L.) Fourr.	Suteleği	Non Endemic	NE	Cryptophyte (Hydrophyte)	Euro-Siberian	1	FO
POTAMOGETONACEAE	<i>Potamogeton crispus</i> L.	Susümbülü	Non Endemic	LC	Cryptophyte (Hydrophyte)	Unknown	1,2	FO
POTAMOGETONACEAE	<i>Potamogeton lucens</i> L.	Telsusümbülü	Non Endemic	LC	Cryptophyte (Hydrophyte)	Unknown	1,2,3	FO
POTAMOGETONACEAE	<i>Potamogeton natans</i> Boiss.	Suotu	Non Endemic	LC	Cryptophyte (Hydrophyte)	Unknown	1,2	FO
POTAMOGETONACEAE	<i>Stuckenia pectinata</i> (L.) Börner	Sutarağı	Non Endemic	LC	Cryptophyte (Hydrophyte)	Unknown	1,3	FO
POTAMOGETONACEAE	<i>Zannichellia palustris</i> L.	Sukılı	Non Endemic	NE	Cryptophyte (Hydrophyte)	Unknown	1	FO
PRIMULACEAE	<i>Anagallis arvensis</i> var. <i>arvensis</i> L.	Farekulağı	Non Endemic	NE	Therophyte	Unknown	1,2,3	FO
PRIMULACEAE	<i>Cyclamen cilicium</i> Boiss. & Heldr.	Şeytankabalağı	Endemic	NT	Cryptophyte (Geophyte)	Unknown	1	FO

PRIMULACEAE	<i>Lysimachia vulgaris</i> L.	Kargaotu	Non Endemic	LC	Hemicryptophyte	Unknown	2	ÜS1678
PRIMULACEAE	<i>Primula acaulis</i> (L.) L. subsp. <i>acaulis</i>	Çuhaççeği	Non Endemic	NE	Hemicryptophyte	Euro-Siberian	1	FO
PTERIDACEAE	<i>Paraceterach marantae</i> (L.) R.M. Tyron	Telekeğreltisi	Non Endemic	NE	Cryptophyte (Geophyte)	Unknown	1	FO
RANUNCULACEAE	<i>Adonis flammea</i> Jacq.	Cinlalesi	Non Endemic	NE	Therophyte	Unknown	1,3	FO
RANUNCULACEAE	<i>Consolida orientalis</i> (J. Gay) Schrödinger	Morççek	Non Endemic	NE	Therophyte	Unknown	1,3	FO
RANUNCULACEAE	<i>Consolida raveyi</i> (Boiss.) Schrödinger	Topalmahmuz	Endemic	LC	Therophyte	Irano-Turanian	1,3	ÜS 1651
RANUNCULACEAE	<i>Consolida regalis</i> Gray	Çatal Mahmuzotu	Non Endemic	NE	Therophyte	Unknown	2	FO
RANUNCULACEAE	<i>Delphinium peregrinum</i> L.	Telhezaren	Non Endemic	NE	Hemicryptophyte	East Mediterranean	1,2	ÜS 1658
RANUNCULACEAE	<i>Eranthis hyemalis</i> (L.) Salisb.	Sarikokulu	Non Endemic	NE	Cryptophyte (Geophyte)	Unknown	1	FO
RANUNCULACEAE	<i>Nigella arvensis</i> L.	Tarlaçörekotu	Non Endemic	NE	Therophyte	Unknown	1,2,3	FO
RANUNCULACEAE	<i>Ranunculus arvensis</i> L.	Mustafaççeği	Non Endemic	NE	Therophyte	Unknown	1	FO
RANUNCULACEAE	<i>Ranunculus constantinopolitanus</i> (DC.) d'Urv.	Kağıthaneççeği	Non Endemic	NE	Hemicryptophyte	Unknown	1	FO
RANUNCULACEAE	<i>Ranunculus ficaria</i> L. subsp. <i>ficariiformis</i> Rouy & Fouc	Arpacısalebi	Non Endemic	NE	Hemicryptophyte	Unknown	1,2	FO
RANUNCULACEAE	<i>Ranunculus sceleratus</i> L.	Batakdüğünççeği	Non Endemic	NE	Hemicryptophyte	Unknown	1,2	FO
RANUNCULACEAE	<i>Ranunculus sphaerospermus</i> Boiss. & Blanche	Suççeği	Non Endemic	NE	Therophyte	Unknown	1,2,3	FO
RANUNCULACEAE	<i>Ranunculus trichophyllus</i> Chaix ex Vill.	Suluçanak	Non Endemic	NE	Hemicryptophyte	Unknown	1,2	FO
RESEDACEAE	<i>Reseda lutea</i> L. var. <i>lutea</i>	Muhabbetççeği	Non Endemic	NE	Therophyte	Unknown	1	FO
RHAMNACEAE	<i>Paliurus spina-christi</i> P. Mill.	karaçalı	Non Endemic	NE	Phanerophyte	Unknown	2	FO
RHAMNACEAE	<i>Rhamnus petiolaris</i> Boiss. & Balansa	Cehri	Endemic	LC	Phanerophyte	Unknown	1,2,3	FO
ROSACEAE	<i>Amelanchier ovalis</i> Medik.	Kurtağacı	Non Endemic	NE	Phanerophyte	Unknown	1,3	FO
ROSACEAE	<i>Amygdalus orientalis</i> Miller	Payam	Non Endemic	NE	Phanerophyte	Irano-Turanian	1,2	FO
ROSACEAE	<i>Amygdalus webbii</i> Spach	Badem	Non Endemic	DD	Phanerophyte	Irano-Turanian	2	FO
ROSACEAE	<i>Armeniaca vulgaris</i> L.	Kayısı	Non Endemic	NE	Phanerophyte	Unknown	1	FO
ROSACEAE	<i>Cerasus avium</i> (L.) Moench	Kiraz	Non Endemic	NE	Phanerophyte	Unknown	1,2	FO
ROSACEAE	<i>Cerasus mahaleb</i> (L.) Mill. var. <i>mahaleb</i>	Mahlep	Non Endemic	NE	Phanerophyte	Unknown	1,2	FO
ROSACEAE	<i>Cotoneaster nummularius</i> Fisch. & C.A. Mey.	Dağmuşması	Non Endemic	NE	Phanerophyte	Unknown	1	FO
ROSACEAE	<i>Crataegus azarolus</i> L. var. <i>azarolus</i>	Müzümldek	Non Endemic	NE	Phanerophyte	Unknown	1,2	FO
ROSACEAE	<i>Crataegus monogyna</i> Jacq.	Yemişen	Non Endemic	NE	Phanerophyte	Unknown	1	FO
ROSACEAE	<i>Crataegus orientalis</i> Pall. ex M. Bieb.	Alıç	Non Endemic	NE	Phanerophyte	Unknown	1,2,3	FO
ROSACEAE	<i>Cydonia oblonga</i> Mill.	ayva	Non Endemic	NE	Phanerophyte	Unknown	2	FO
ROSACEAE	<i>Fragaria vesca</i> L.	dağ çileği	Non Endemic	NE	Hemicryptophyte	Euro-Siberian	2	FO
ROSACEAE	<i>Malus sylvestris</i> (L.) Mill. subsp. <i>orientalis</i> var. <i>orientalis</i>	Yabanelması	Non Endemic	NE	Phanerophyte	Unknown	1,2	FO
ROSACEAE	<i>Potentilla recta</i> L.	Suparmakotu	Non Endemic	NE	Hemicryptophyte	Unknown	1,3	FO
ROSACEAE	<i>Potentilla reptans</i> L.	Reşatınotu	Non Endemic	NE	Hemicryptophyte	Unknown	2	FO
ROSACEAE	<i>Prunus divaricata</i> Ledeb. subsp. <i>divaricata</i>	Yunuseriği	Non Endemic	NE	Phanerophyte	Unknown	1,2	FO
ROSACEAE	<i>Prunus spinosa</i> L.	Çakaleriği	Non Endemic	NE	Phanerophyte	Euro-Siberian	1,2	FO
ROSACEAE	<i>Pyrus communis</i> subsp. <i>sativa</i> (DC.) Hegi	Armut	Non Endemic	NE	Phanerophyte	Unknown	2	FO
ROSACEAE	<i>Pyrus elaeagnifolia</i> Pall.	Ahlat	Non Endemic	NE	Phanerophyte	Unknown	2	FO
ROSACEAE	<i>Rosa canina</i> L.	Kuşburnu	Non Endemic	NE	Phanerophyte	Unknown	1,2,3	FO
ROSACEAE	<i>Rubus canescens</i> DC. var. <i>canescens</i>	Çobankösteği	Non Endemic	NE	Phanerophyte	Euro-Siberian	1,2	FO
ROSACEAE	<i>Rubus sanctus</i> Schreb.	Böğürtlen	Non Endemic	NE	Phanerophyte	Unknown	2	FO
ROSACEAE	<i>Sanguisorba minor</i> L.	Çayırduğmesi	Non Endemic	NE	Hemicryptophyte	Unknown	1,3	FO
ROSACEAE	<i>Sorbus torminalis</i> (L.) Crantz var. <i>torminalis</i>	Pitlicen	Non Endemic	NE	Phanerophyte	Unknown	1	FO

RUBIACEAE	<i>Asperula lilaciflora</i> Boiss. subsp. <i>phrygia</i> (Bornm.) Schönb. -Tem.	Sarmaşbelum	Endemic	LC	Hemicryptophyte	Unknown	1	FO
RUBIACEAE	<i>Asperula stricta</i> subsp. <i>latibracteata</i> (Boiss.) Ehrend.	Berit Belumotu	Endemic	NE	Hemicryptophyte	Irano-Turanian	2	FO
RUBIACEAE	<i>Galium canum</i> Req. ex DC.	İtıplikçığı	Non Endemic	NE	Hemicryptophyte	East Mediterranean	1,2,3	FO
RUBIACEAE	<i>Galium dumosum</i> Boiss.	Yurtyoğurtotu	Endemic	LC	Hemicryptophyte	Mediterranean	1,3	FO
RUBIACEAE	<i>Galium spurium</i> L. subsp. <i>spurium</i>	Arsızıplikçik	Non Endemic	NE	Hemicryptophyte	Euro-Siberian	1	FO
RUBIACEAE	<i>Galium verum</i> L.	Boyalık	Non Endemic	NE	Hemicryptophyte	Euro-Siberian	1,2,3	FO
SALICACEAE	<i>Populus alba</i> L.	Akkavak	Non Endemic	NE	Phanerophyte	Euro-Siberian	1,2	FO
SALICACEAE	<i>Populus nigra</i> subsp. <i>nigra</i> L.	Kara Kavak	Non Endemic	NE	Phanerophyte	Euro-Siberian	2	FO
SALICACEAE	<i>Salix alba</i> L.	Sögüt	Non Endemic	NE	Phanerophyte	Euro-Siberian	1,2	FO
SANTALACEAE	<i>Thesium billardieri</i> Boiss.	Meşegüveleği	Non Endemic	NE	Hemicryptophyte	Irano-Turanian	1	FO
SANTALACEAE	<i>Viscum album</i> L. subsp. <i>album</i>	Ökseotu	Non Endemic	NE	Phanerophyte	Unknown	1	FO
SAPINDACEAE	<i>Acer hyrcanum</i> Fisch. & C.A. Mey. subsp. <i>sphaerocaryum</i> Yalt.	Kasnakakaağacı	Endemic	LC	Phanerophyte	East Mediterranean	1	FO
SCROPHULARIACEAE	<i>Scrophularia canina</i> L. subsp. <i>bicolor</i> (Sm) Greuter	İtsiracaotu	Non Endemic	NE	Hemicryptophyte	East Mediterranean	1,2	FO
SCROPHULARIACEAE	<i>Scrophularia cryptophila</i> Boiss. & Heldr.	Örensiracaotu	Endemic	NE	Hemicryptophyte	East Mediterranean	1,3	FO
SCROPHULARIACEAE	<i>Scrophularia pinardii</i> Boiss	Çalışiracaotu	Non Endemic	NE	Chamaephyte	East Mediterranean	1,3	FO
SCROPHULARIACEAE	<i>Scrophularia rimarum</i> Bornm.	Sadırlısiraca	Non Endemic	NE	Hemicryptophyte	Unknown	1,3	FO
SCROPHULARIACEAE	<i>Verbascum cheiranthifolium</i> var. <i>helderichii</i> Boiss.	Bozkulak	Endemic	NE	Hemicryptophyte	Unknown	2	ÜS1682
SCROPHULARIACEAE	<i>Verbascum cherianthifolium</i> var. <i>cherianthifolium</i> Boiss.	Bozkulak	Non Endemic	NE	Hemicryptophyte	Unknown	1	FO
SCROPHULARIACEAE	<i>Verbascum insulare</i> Boiss. & Heldr.	Ada Sığırkuyrugu	Endemic	LC	Hemicryptophyte	Irano-Turanian	3	FO
SOLANACEAE	<i>Hyoscyamus niger</i> L.	Banotu	Non Endemic	NE	Hemicryptophyte	Unknown	1,2	FO
TAMARICACEAE	<i>Tamarix parviflora</i> DC.	Delilgin	Non Endemic	NE	Phanerophyte	Mediterranean	1	FO
TAXACEAE	<i>Taxus baccata</i> L.	Porsuk	Non Endemic	NE	Phanerophyte	Unknown	1	FO
THYMELAEACEAE	<i>Daphne oleoides</i> Schreb. subsp. <i>oleoides</i>	Gövçek	Non Endemic	NE	Phanerophyte	Unknown	1	FO
TYPHACEAE	<i>Sparganium erectum</i> subsp. <i>microcarpum</i> (Neuman) Domin	Küçükkindra	Non Endemic	NE	Hemicryptophyte	Euro-Siberian	1,2,3	FO
TYPHACEAE	<i>Typha angustifolia</i> L.	Sazak	Non Endemic	NE	Cryptophyte (Helophytes)	Unknown	1,2,3	ÜS1681
TYPHACEAE	<i>Typha domingensis</i> Pers.	Şeytanmumu	Non Endemic	NE	Cryptophyte (Helophytes)	Unknown	1,2,3	FO
TYPHACEAE	<i>Typha latifolia</i> L.	Cil	Non Endemic	LC	Cryptophyte (Helophytes)	Unknown	1,2,3	FO
ULMACEAE	<i>Ulmus glabra</i> Hudson	Dağkaraağacı	Non Endemic	NE	Phanerophyte	Euro-Siberian	1	FO
URTICACEAE	<i>Parietaria judaica</i> L.	Duvarfesleğeni	Non Endemic	NE	Chamaephyte	Unknown	1	FO
URTICACEAE	<i>Urtica dioica</i> L.	Isırgan	Non Endemic	NE	Hemicryptophyte	Euro-Siberian	2	FO
VERBENACEAE	<i>Verbena officinalis</i> L.	Mineççeği	Non Endemic	NE	Hemicryptophyte	Unknown	1,2,3	FO
VIOLACEAE	<i>Viola sieheana</i> Becker	Çayirmenekşesi	Non Endemic	NE	Hemicryptophyte	Unknown	1	FO
VITACEAE	<i>Vitis sylvestris</i> Gmelin	Deliasma	Non Endemic	NE	Phanerophyte	Unknown	1	FO
XANTHORRHOACEAE	<i>Asphodeline taurica</i> (Pall.) Endl.	Kılıçiris	Non Endemic	NE	Cryptophyte (Geophyte)	East Mediterranean	1	FO
ZYGOPHYLLACEAE	<i>Tribulus terrestris</i> L.	Çobançökerten	Non Endemic	NE	Therophyte	Unknown	1,2	FO
ZYGOPHYLLACEAE	<i>Zygophyllum fabago</i> L.	İtüzerliği	Non Endemic	NE	Hemicryptophyte	Irano-Turanian	1,2	FO