

*Engin Öncü Sümer ve Mine Sümer
Hacettepe Üniversitesi, Jeoloji Mühendisliği
Bölümü, Beytepe 06532 Ankara*

Jeoloji Panorama

Jeoloji Panorama'nın bu sayısında "Dünya Periyodiklerinden CD-tarama sayfalarında "Minerallerin Çevre Kirliliğine Etkisi ve Yeraltısu Kirlenmesi" alt başlıkları altında "Çevre Jeolojisi" konusuna ait önemli bazı makaleler araştırmacılara sunulmaktadır. Özler/Abstracts bölümünde 1996 ve 1997 yılları içinde yurtdışında önemli dergilerde yayınlanmış Türkiye Jeolojisi ile ilgili 4 makaleye yer verilmektedir. Sempozyum/Seminer/Konferans bölümünde 1996-1997 yıllarında TMMOB Jeoloji Mühendisleri Odası tarafından düzenlenen "1. Ulusal Kırmataş Sempozyumu '96", "Su ve Çevre Sempozyumu '97" ve "GEOENV '97 Çevre Sempozyumu"nda yer alan konu başlıklarına yer verilmektedir. Ayrıca aynı bölümde 1998 yılında yapılacak olan bazı sempozyumlar hakkında duyurular yer almaktadır. Yeni Yayınlar/Kitaplar bölümünde 1997 yılında Türkiye'de yayınlanmış kitap tanıtımları okurlarımıza sunulmaktadır. Türkiye'deki jeolojik araştırmalara ve okurlarımıza katkı sağlayacağına inandığımız "Jeoloji Panorama" sizlerin görüş ve eleştirilerinizi beklemektedir.

Not: "Jeoloji Panorama" ile ilgili görüş ve düşüncelerinizi ve yayınlanmasını istediğiniz konuları aşağıdaki e-mail adresine yazabilirsiniz.

engin@jeo.hun.edu.tr (Engin Öncü Sümer)

CEVRE JEOLojİSİ

(Mineral Kirliliği ve Yeraltı Suyu Kirliliği)
(1983-1993 GEOREF CD-taraması)

Hazırlayanlar: Engin Öncü Sümer ve Mine Sümer

Kısaltmalar:

TI = Başlık

AU = Yazar(lar)

OS =Yayınlandığı yer, cilt, sayfa

AB = Yayının özeti

YR = Yayınlandığı yıl

LA = Yayının yazıldığı dil

DE = Yayının anahtar sözcükleri

TI: Retention of acetonitrile and acrylonitrile on clays.

AU: Zhang-Z-Z; Sparks-D-L; Scrivner-N-C

SO: American-Geophysical-Union. 72. (17). p. 110 YR: 1991

DE: geochemistry-; processes-; sorption-; waste-disposal; injection-; hazardous-waste; experimental-studies; clay-minerals; sheet-silicates; silicates-; acetonitrile-; acrylonitrile-; underground-storage

TI: Mapping subsurface organic compounds noninvasively by their reactions with clays.

AU: Olhoeft-G-R; King-T-V-V

SO: Open-File-Report-U.-S.-Geological-Survey. p. 104 YR: 1991

DE: organic-materials; analysis-; polymerization-; Calcasieu-Parish-Louisiana; USGS-; waste-disposal; pollution-; hazardous-waste; montmorillonite-; clay-minerals; sheet-silicates; silicates-; experimental-studies; Louisiana-; Southern-U.S.; United-States; southwestern-Louisiana; ion-exchange; toluene-; aromatic-hydrocarbons; hydrocarbons-

TI: Preliminary interpretation of geophysical logs and in situ hydrologic properties in fractured limestone at Loring Air Force Base.

AU: Dearborn-L-L; Baker-P-S; Davis-J-B

SO: Geotechnical,-and-Groundwater-Applications.3. p.595-622. YR: 1989

DE: Maine-; engineering-geology; waste-disposal; seepage-; hazardous-waste; well-logging; electrical-logging; resistivity-; Limestone-County-Maine; New-England; Eastern-U.S.; United-States; limestone-; carbonate-rocks; interpretation-; boreholes-; migration-; Loring-Air-Force-Base; in-situ

TI: Log evaluation required for permitting of a Class I hazardous waste injection well; a case history.

AU: Lowe-D-J

SO: Geophysics - for - Minerals, - Geotechnical, - and - Groundwater - Applications. 3. p. 261-268. YR: 1989

DE: Alaska-; engineering-geology; waste-disposal; well-logging; seismic-logging; applications-; Western-U.S.; United-States; hazardous-waste; case-studies; Endicott-Field; fluid-injection; techniques-

TI: Stabilizing compacted clay against chemical attack.

AU: Broderick-Gregory-P; Daniel-David-E

SO: Journal-of-Geotechnical-Engineering. 116. (10). p. 1549-1569. YR: 1990

AB: Large increases in the hydraulic conductivity of compacted clay have been shown to be caused by concentrated organic chemicals. Mechanical and chemical methods of stabilizing four different types of compacted clay against chemical attack are investigated. Mechanical stabilization using a large compactive effort (modified Proctor compaction) or application of a compressive stress >10 psi (70 kPa) is found to render a compacted clay invulnerable to attack by concentrated organic chemicals under laboratory-test conditions. Attapulgite, a clay mineral having little electrical charge, was found to be relatively unaffected (compared to more common clay minerals such as kaolinite, illite, and smectite) by concentrated organic chemicals. Addition of approximately 7 percent (by weight) of lime, portland cement, or lime plus sodium silicate greatly improved the ability of compacted clay to resist attack by concentrated organic chemicals; in some cases the amended soils were less permeable to concentrated organic chemicals than the unamended soils were to water.--Modified journal abstract.

DE: soil-mechanics; methods-; stabilization-; waste-disposal; seepage-; soil-liners; geochemistry-; clay-; clastic-sediments; hydraulic-conductivity; clay-liners; compaction-; hazardous-waste; lime-; sodium-silicate; organic-materials; kaolinite-; clay-minerals; sheet-silicates; silicates-; illite-

TI: Hydrologic hydrochemical characterization of Texas Frio Formation used for deep-well injection of chemical wastes.

AU: Kreidler-Charles-W; Akhter-M-Saleem; Donnelly-Andrew-C-A
 SO: Environmental-Geology-and-Water-Sciences. 16. (2). p. 107-120.
 YR: 1990

DE: Texas-; environmental-geology; waste-disposal; Gulf-Coastal-Plain; oxygen-; isotopes-; O-18/O-16; Frio-Formation; Southwestern-U.S.; United-States; North-America; hydrochemistry-; East-Texas; southeastern-Texas; hazardous-waste; brines-; fluid-injection; biodegradation-; liquid-waste; Tertiary-; stable-isotopes; illite-; clay-minerals; sheet-silicates; silicates-; calcite-; carbonates-

TI: Mapping organic contamination by detection of clay-organic processes.

AU: King-Trude-V-V; Olhoeft-Gary-R

SO: Anonymous. Proceedings of the conference on Petroleum hydrocarbons and organic chemicals in ground water; prevention, detection and restoration. p. 627-640. YR: 1989

DE: pollution-; detection-; contamination-; sheet-silicates; silicates-; hazardous-waste; toluene-; aromatic-hydrocarbons; hydrocarbons-; organic-materials; montmorillonite-; clay-minerals; polymerization-; landfills-; cations-

TI: Utilizing a borehole geophysical logging program in poorly consolidated sediments for a hazardous waste investigation.

AU: Crowder-Robert-E; Brouillard-Lee; Irons-Larry-A

SO: Geophysics - for - Minerals, - Geotechnical, - and - Groundwater - Applications. 2. p. 65-97. YR: 1987

DE: Colorado-; geophysical-surveys; well-logging; applications-; waste-disposal; Adams-County-Colorado; unconsolidated-materials; hazardous-waste; Rocky-Mountain-Arsenal; Western-U.S.; United-States; gamma-gamma-methods; self-potential-methods; temperature-logging; radioactivity-; resistivity-; electrical-logging

TI: Clay basins as especially suitable areas for hazardous waste repositories.

AU: Czurda-Kurt-A; Boehler-Ulrike; Wagner-Jean-Frank

SO: Chaing Mai Univ., Dep. Geol. Sci., Chaing Mai, Thailand. p. 146-160. YR: 1989

DE: West-Germany; engineering-geology; waste-disposal; clay-mineralogy; areal-studies; hazardous-waste; site-exploration; intermontane-basins; clay-; clastic-sediments; marl-; clastic-rocks; Tertiary-; Upper-Rhine-Graben; Germany-; Central-Europe; Europe-; Rhine-Graben; Eisenberg-Basin; Wiesloch-Clay; clay-basins; adsorption-; clays-; properties-; refractory-materials; Rupelian-; lower-Oligocene; Oligocene-; Paleogene-; Dammelwald-; sedimentation-; provenance-; Pliocene-; Neogene-; Foraminiferenmergel-; X-ray-diffraction-data; claystone-; kaolinite-; clay-minerals; sheet-silicates; silicates-; illite-; heavy-metals; physicochemical-properties; sorption-; permeability-; diffusion-

TI: Asbestos schizophrania.

AU: Rutstein-Martin-S

SO: Abstracts-with-Programs-Geological-Society-of-America. 20. (1). p. 67
 YR: 1988

DE: minerals-; silicates-; asbestos-; hazardous-materials; medical-geology

TI: Talc and tremolite as "asbestos" hazards.

AU: Rutstein-Martin-S

SO: Abstracts-with-Programs-Geological-Society-of-America. 20. (1). p. 66-67 YR: 1988

DE: minerals-; silicates-; physical-properties; tremolite-; clinoamphibole-; amphibole-group; chain-silicates; talc-; sheet-silicates; hazardous-materials

TI: The chemistry of shallow groundwaters in the Murrumbidgee irrigation area, New South Wales.

AU: Williams-Baden-G; Ward-J-K

SO: Australian-Journal-of-Soil-Research. 25. (3). p. 251-261. YR: 1987

DE: ground-water; surveys-; New-South-Wales; hydrogeology-; Murrumbidgee-; Australia-; Australasia-; chemical-composition; waterways-; irrigation-; saturation-; calcium-; minerals-; ions-; salt-; evaporites-; chemically-precipitated-rocks; concentration-; geochemistry-; hazardous-materials; infiltration-; water-table; methods-; aquifers-

TI: Solute transport during unsteady, unsaturated soil water flow; the pulse input.

AU: Bond-W-J

SO: Australian-Journal-of-Soil-Research. 25. (3). p. 223-241. YR: 1987

DE: soils-; water-regimes; dissolved-materials; pollution-; ground-water; hazardous-materials; solutes-; geochemistry-; flows-; ions-; Clay-soils; infiltration-; tritium-; chlorides-; halides-; minerals-; dispersion-; surveys-

TI: A nontoxic substitute for hazardous heavy liquids; aqueous sodium polytungstate (3Na₂WO₄.9WO₃.H₂O) solution.

AU: Gregory-Murray-R; Johnston-Keith-A

SO: New-Zealand-Journal-of-Geology-and-Geophysics. 30. (3). p. 317-320. YR: 1987

DE: geochemistry-; processes-; filtration-; sodium-polytungstate; salt-; evaporites-; chemically-precipitated-rocks; aqueous-solutions; heavy-minerals; halogenated-hydrocarbons; tetrabromoethane-; bromoform-; separation-

TI: Clay mineral barriers to hazardous waste migration.

AU: Warren-Robin-L; Hughes-Randall-E; Chou-Sheng-Fu; Griffin-Robert-A

SO: Program-and-Abstracts-Annual-Clay-Minerals-Conference. 24. p. 140 YR: 1987

DE: Illinois-; environmental-geology; waste-disposal; methods-; sedimentary-rocks; clay-; clastic-sediments; liquid-waste; organic-materials; Midwest-; United-States; Wilsonville-; clay-mineralogy

TI: Environmental impact of mineral transformations undergone during coal combustion.

AU: Chinchon-J-S; Querol-X; Fernandez-Turiel-J-L; Lopez-Soler-A

SO: Environmental-Geology-and-Water-Sciences. 18. (1). p. 11-15. YR: 1991

DE: pollution-; air-; sulfur-; Spain-; environmental-geology; organic-residues; ash-; coal-; X-ray-data; sedimentary-rocks; experimental-studies; Iberian-Peninsula; Southern-Europe; Europe-; Teruel-District; environment-; transformations-; minerals-; anhydrite-; sulfates-; case-studies

TI: Radioactive waste isolation in arid zones.

AU: Nativ-R

SO: Ginzburg, D., Shirav, M. The Israeli Association for the Advancement of Mineral Engineering; the Tenth conference. Conference-Israeli-Association-for-the-Advancement-of-Mineral-Engineering. 10. p. E42 YR: 1990

DE: waste-disposal; radioactive-waste; pollution-; ground-water; surface-water; unsaturated-zone; water-; water-quality; arid-environment; environment-

TI: Earth sciences and the environment.

AU: Templeman-Kluit-Dirk

SO: Canadian-Geophysical-Union,-Joint-Annual-Meeting. 15. p. 129 YR: 1990

DE: geology-; practice-; planning-; engineering-geology; pollution-; controls-

TI: Study of two alteration systems as natural analogues for radionuclide release and migration.

AU: Ildefonse-Philippe; Muller-Jean-Pierre; Clozel-Blandine; Calas-Georges

SO: Wolff, F. C., Cendrero, A. *Geology and the environment. Geol. Surv. Norway, Trondheim, Norway. Engineering-Geology.* 29. (4). p. 413-439. YR: 1990

AB: U-deposit hosted in hydrothermally altered tuffs in Mexico, together with weathering profiles from Cameroon were studied as natural analogues of radionuclide release and migration. Using petrological and spectroscopic methods (infrared and electron paramagnetic resonance), successive secondary mineral parageneses, and the behaviour of radionuclides, were distinguished. It is concluded that paramagnetic defect centres in kaolinites might allow an efficient fingerprint of successive irradiations in the natural analogues under study and could be an useful tool to control radionuclides migration through kaolinite-containing clayey materials such as those used for waste repository.-- Modified journal abstract.

DE: Mexico-; geochemistry-; metasomatism-; Cameroon-; weathering-; processes-; hydrothermal-alteration; waste-disposal; radioactive-waste; pollution-; radioactive-isotopes; clay-mineralogy; experimental-studies; isotopes-; analysis-; uranium-minerals; analog-simulation; transport-; tuff-; pyroclastics-; volcanic-rocks; SEM-data; Chihuahua-; West-Africa; Africa-; laterites-; soils-; kaolinite-; clay-minerals; sheet-silicates; silicates-; EPR-spectra; TEM-data; saprolite-; clastic-rocks

TI: Bioindication of the environmental pollution of the cities.

AU: Revich-B-A; Kiseleva-E-S (Kiseleva, Ye. S.); Moskalenko-N-N

SO: Pulkkinen, Eelis. *Symposium on Environmental geochemistry in Northern Europe; abstracts. Geol. Surv. Finl., Geochem. Dep., Rovaniemi, Finland.* p. 45 YR: 1989

DE: pollution-; detection-; bioindicators-; geochemistry-; environment-; elements-; ecology-; chemical-composition; toxic-materials; concentration-; human-ecology; substrates-; biology-; biota-; methods-; analysis-; indicators-

TI: Geochemical mapping as a method of indication of hazardous ecological situations.

AU: Burenkov-E-C (Burenkov, E. K.); Smirnova-R-S; Sorokina-E-P

DE: ecology-; analysis-; terrestrial-environment; geochemistry-; cartography-; pollution-; environment-; heavy-metals

TI: Uranium distribution and geology in the Fish Lake surficial uranium deposit, Esmeralda County, Nevada.

AU: Macke-David-L; Schumann-R-Randall; Otton-James-K

OS: U. S. Geol. Surv., United-States

SO: *Geological-Survey-Bulletin-(Washington).* 22 p. YR: 1990

DE: Nevada-; economic-geology; uranium-ores; uranium-; geochemistry-; sediments-; mineral-exploration; geochemical-methods; trace-elements; mineral-deposits; genesis-; environment-; Esmeralda-County-Nevada; USGS-; Western-U.S.; United-States; southern-Nevada; Fish-Lake-Deposit; actinides-; metals-; metal-ores; marshes-; pollution-; lake-sediments; geologic-hazards; organic-materials; springs-; ground-water; paludal-environment; mineral-deposits-; genesis-; geochemical-controls; hydrogeological-controls; paleogeographic-controls

TI: Comparison of the mineralogy and geochemistry of the Kerosene Creek Member, Rundle and Stuart oil shale deposits, Queensland, Australia.

AU: Patterson-J-H; Henstridge-D-A

SO: *Chemical-Geology.* 82. (3-4). p. 319-339. YR: 1990

DE: Queensland-; geochemistry-; trace-elements; economic-geology; oil-shale; sedimentary-rocks; organic-residues; sedimentation-; environment-; lacustrine-environment; Australia-; Australasia-; Rundle-Formation; Stuart-Formation; Kerosene-Creek-Member; major-

elements; mineral-composition; pollution-; beneficiation-; Tertiary-; statistical-analysis

TI: Mineral sand mining and its effect on groundwater quality.

AU: Viswanathan-M-N

SO: *Water-Science-and-Technology.* 22. (6). p. 95-100. YR: 1990

DE: New-South-Wales; environmental-geology; pollution-; ground-water; surveys-; water-quality; aquifers-; iron-; metals-; sulfates-; water-treatment; unconfined-aquifers; Tomago-sandbeds; Australia-; Australasia-; biodegradation-; sands-; solution-mining; coastal-environment; environment-

TI: Natural radioactivity of fresh waters in Slovenia, Yugoslavia.

AU: Kobal-Ivan; Vaupotic-J; Mitic-D; Kristan-J-J; Ancik-M; Jerancic-S; Skofljanec-M

SO: *Environment-International.* 16. (2). p. 141-154. YR: 1990

DE: Yugoslavia-; environmental-geology; pollution-; radon-; isotopes-; Rn-222; radium-; Ra-226; water-; radioactive-isotopes; ground-water; surveys-; hydrology-; Southern-Europe; Europe-; Slovenia-; radioactivity-; geochemistry-; noble-gases; alkaline-earth-metals; metals-; uranium-; actinides-; surface-water; uranium-ores; metal-ores; phosphate-rocks; chemically-precipitated-rocks; radioactive-waste; thermal-waters; mineral-waters

TI: Microbially mediated fixation of uranium, sulfur, and iron in a peat-forming montane wetland, Larimer County, Colorado.

AU: Robbins-Eleanora-I; Zielinski-R-A; Otton-James-K; Owen-D-E; Schumann-R-R; McKee-J-P

SO: *Geological-Survey-Circular.* p. 70-71 YR: 1990

DE: Colorado-; geochemistry-; trace-elements; Larimer-County-Colorado; USGS-; Western-U.S.; United-States; north-central-Colorado; Rocky-Mountains; North-America; biogenic-effects; bacteria-; uranium-; actinides-; metals-; sulfur-; iron-; peat-; organic-residues; wetlands-; coal-; pollution-; pH-; mountains-; paludal-environment; environment-

TI: Natural and man-made anomalies of heavy metals in soils of Finland.

AU: Kauranne-L-K

SO: *Hydrogeol. and Eng. Geol., Moscow, USSR.* p. 161-208. YR: 1989

DE: Finland-; environmental-geology; pollution-; soils-; surveys-; ground-water; geochemistry-; metals-; sediments-; clastic-sediments; drift-; mining-geology; effects-; Scandinavia-; Western-Europe; Europe-; anomalies-; heavy-metals; mineral-composition; organic-materials; grain-size

TI: Etude de la pollution metallique (Cd,Cu,Pb,Zn) du littoral atlantique marocain entre Kenitra et Temara.

Translated title: Research in metallic pollution (Cd, Cu, Pb, Zn) in the intertidal environment of the Moroccan Atlantic Coast, between Kenitra and Temara.

AU: Mahayoui-M; Saghi-M; Karchaf-I

SO: *Chemosphere-(Oxford).* 18. (7-8). p. 1639-1655.

YR: 1989 LA: French LS: English

DE: Morocco-; environmental-geology; pollution-; heavy-mineral-deposits; intertidal-environment; environment-; North-Africa; Africa-; Atlantic-Ocean; Kenitra-; Temara-; Moroccan-Atlantic-Coast; analysis-; cadmium-; metals-; biochemistry-; sediments-; marine-sediments; copper-; lead-; zinc-

TI: Antarctic environment, keeping the South Pole clean.

AU: Austin-Penelope

SO: *Nature-(London).* 341. (6238). p. 93 YR: 1989

DE: Antarctica-; environmental-geology; conservation-; mineral-exploration; objectives-; Polar-regions; oil-spills; pollution-; international-cooperation

TI: Schwermetalle in der Donau im Raum Wien; Eine Vorstudie.
Translated title: Heavy metals in the Danube River in the vicinity of Vienna; a previous study.

AU: Kralik-M; Sager-M

SO: Nachrichten-Deutsche-Geologische-Gesellschaft. 33. p. 53-54
 YR: 1985

DE: hydrology-; surveys-; Austria-; metals-; geochemistry-; clastic-sediments-; environmental-geology-; pollution-; organic-materials-; sediments-; Danube-River-; Vienna-; Central-Europe-; Europe-; Lower-Austria-; hydrogeology-; heavy-metals-; hydrochemistry-; mineral-composition-; fluvial-environment-; environment-; surface-water

TI: Groundwater contamination incidents in Australia; an initial survey.

AU: Jacobson-G; Lau-J-E

SO: Report-Bureau-of-Mineral-Resources,-Geology-and-Geophysics. 21 p.
 YR: 1988

DE: Australia-; environmental-geology-; pollution-; ground-water-; surveys-; Australasia-; pollutants-; sewage-; leaching-; Perth-Basin-; Gambier-Limestone-; aquifers-; water-management-; urban-environment-; environment-; agriculture-; water-quality

TI: Radon emanations in surficial geologic deposits of Kenosha, Racine and Waukesha counties in southeastern Wisconsin.

AU: Kochis-Nancy-S; Orlovsky-Steven-J; Leavitt-Steven-W

SO: Abstracts-with-Programs-Geological-Society-of-America. 21. (4). p. 18
 YR: 1989

DE: Wisconsin-; environmental-geology-; pollution-; Kenosha-County-Wisconsin-; Racine-County-Wisconsin-; Waukesha-County-Wisconsin-; Oak-Creek-Formation-; Horicon-Formation-; Midwest-; United-States-; southeastern-Wisconsin-; radon-; noble-gases-; air-; indoor-environment-; Kettle-Moraine-; Lake-Plain-; in-situ-; geochemistry-; mineral-composition-; textures-

TI: Impact of mineral exploration on environment and its management.

AU: Nene-S-G; Panja-S-R

SO: India, Mining, Geological and Metallurgical Institute, India. 8 p.
 YR: 1987

DE: India-; environmental-geology-; conservation-; pollution-; risk-assessment-; mining-; human-activity-; Indian-Peninsula-; Asia-

TI: India's environment; problems and perspectives; proceedings of the seminar.

AU: Radhakrishna-B-P; Ramachandran-K-K

SO: Memoir-Geological-Society-of-India. 5. 298 p. YR: 1986

DE: symposia-; environmental-geology-; pollution-; India-; Indian-Peninsula-; Asia-; shorelines-; mining-geology-; mineral-resources

TI: Effect of mineral sand mining on iron solubility in a coastal aquifer.

AU: Viswanathan-M-N

SO: Univ. Kebangsaan, Selangor, Malaysia. p. F58-F68. YR: 1987

DE: ground-water-; surveys-; New-South-Wales-; hydrogeology-; sands-; aquifers-; Newcastle-; Australia-; Australasia-; rutile-; oxides-; zircon-; nesosilicates-; orthosilicates-; silicates-; ilmenite-; Tomago-Sandbeds-; iron-; mathematical-geology-; equations-; water-quality-; bacteria-; pollution-; mining-geology-; principles-

TI: The use of stable isotopes to determine the source of brine in Saskatchewan potash mines.

AU: Wittrup-M-B; Kyser-T-K; Danyluk-T

SO: Canada. Special-Publication-Saskatchewan-Geological-Society. 8. p. 159-165. YR: 1986

DE: Saskatchewan-; economic-geology-; potash-; mineral-deposits-; genesis-; environment-; oxygen-; isotopes-; O-18/O-16-; hydrogen-; D/H-; deuterium-; geochemistry-; brines-; tracers-; Western-Canada-; Canada-; evaporites-; chemically-precipitated-rocks-; leakage-anomalies-; water-; aquifers-; Mannville-Group-; floods-; Devonian-; Prairie-Evaporite-Formation-; Cory-Division-; Allan-Division-; stable-isotopes-; hydrogeology-; pollution-; mineral-deposits-; genesis

TI: Massenverlagerung durch Rohstoffgewinnung und ihre umweltgeologischen Folgen.

Translated title: Mass displacement by mineral exploitation and its impact on the geologic environment.

AU: Meyer-D-E

SO: Zeitschrift-der-Deutschen-Geologischen-Gesellschaft. 137. (1). p. 177-193. YR: 1986

DE: conservation-; natural-resources-; energy-sources-; raw-materials-; exploitation-; production-; mass-balance-; dynamics-; erosion-; pollution-; lithosphere-; atmosphere-; hydrosphere-; +-environmental-geology

TI: Interaction of Fe,Ni-metal with preplanetary nebula gases (H₂O, H₂S, CO, CO₂); physicochemical aspect.

AU: Mendybaev-R-A (Mendybayev, R. A.); Kuyunko-N-S; Lavrukhina-A-K

SO: Wasson, John T. Meteoritical Society, 52nd meeting; abstracts. Meteoritics. 24. (4). p. 303 YR: 1989

DE: meteorites-; geochemistry-; ordinary-chondrites-; chondrites-; stony-meteorites-; nickel-; metals-; iron-; solar-nebula-; gases-; effects-; regolith-; breccia-; clastic-rocks-; mineral-assemblages-; hydrogen-disulfide-; water-; carbon-monoxide-; carbon-dioxide

TI: The role of water-rock interaction and fluid evolution in forming the porphyry-related Sisson Brook W-Cu-Mo deposit, New Brunswick.

AU: Nast-Heidi-J; Williams-Jones-Anthony-E

SO: Geology-and-the-Bulletin-of-the-Society-of-Economic-Geologists. 86. (2). p. 302-317. YR: 1991

DE: New-Brunswick-; economic-geology-; base-metals-; mineral-deposits-; genesis-; ore-forming-fluids-; paragenesis-; fluid-inclusions-; geologic-thermometry-; petrography-; Maritime-Provinces-; Eastern-Canada-; Canada-; metal-ores-; evolution-; porphyry-; igneous-rocks-; Sisson-Brook-Deposit-; copper-ores-; molybdenum-ores-; tungsten-ores-; Devonian-; intrusions-; host-rocks-; metagabbro-; metaigneous-rocks-; metavolcanic-rocks-; metasedimentary-rocks-; veins-; disseminated-deposits-; biotitization-; mass-balance-; leaching-; temperature-; mineral-deposits-; genesis-; mineral-composition-; inclusions-; electron-probe-data

TI: Meteoric interaction with magmatic discharges in Japan and the significance for mineralization.

AU: Hedenquist-Jeffrey-W; Aoki-Masahiro

SO: Geology-(Boulder). 19. (10). p. 1041-1044. YR: 1991

DE: Japan-; hydrogeology-; thermal-waters-; volcanology-; volcanoes-; mineral-deposits-; genesis-; metal-ores-; hydrothermal-processes-; metals-; geochemistry-; Far-East-; Asia-; Kyushu-; Kirishima-; Hokkaido-; Esan-Cape-; fumaroles-; hot-springs-; springs-; geothermal-systems-; meteoric-water-; magmas-; gases-; pH-; mineral-deposits-; genesis-; epithermal-processes

TI: Strontium isotopes and water-rock interaction of Agrokipia "B" stockwork deposit in the Troodos Ophiolite, Cyprus; a fossil subseafloor ore body.

AU: Kawahata-Hodaka; Scott-Steven-D

SO: Geochemical-Journal. 24. (6). p. 349-356. YR: 1990

DE: Cyprus-; economic-geology; metal-ores; minerals-; sulfides-; chemical-composition; strontium-; isotopes-; Sr-87/Sr-86; igneous-rocks; ultramafics-; ophiolite-; mineral-deposits; genesis-; processes-; hydrothermal-processes; Troodos-Ophiolite; Middle-East; Asia-; Agropikopia-; stockwork-deposits; geochemistry-; alkaline-earth-metals; metals-; stable-isotopes; rock-water-interface; hydrothermal-alteration; metasomatism-; mineral-deposits,-genesis

TI: Stable isotope and fluid inclusion studies of W-Sn-Ag deposits, Silver Mine District, southeastern Missouri, tectonic control of water-rock interaction in a magmatic hydrothermal system.

AU: Shelton-Kevin-L; Lofstrom-Dotty-M

SO: Univ. Mo., Dep. Geol. and Geophys., Rolla, MO, United-States. p. 368-377. YR: 1988

DE: Missouri-; economic-geology; metal-ores; mineral-deposits; genesis-; processes-; hydrothermal-processes; fluid-inclusions; geochemistry-; isotopes-; oxygen-; O-18/O-16; hydrogen-; D/H-; ratios-; deuterium-; Madison-County-Missouri; southeastern-Missouri; stable-isotopes; inclusions-; wolframite-; tungstates-; silver-ores; tin-ores; tungsten-ores; Midwest-; United-States; mineral-deposits,-genesis; Silver-Mine-District; structural-controls

TI: Oxygen isotopic composition of Lower Cretaceous tholeiites and Precambrian basement rocks from the Parana Basin (Brazil); the role of water-rock interaction.

AU: Iacumin-P; Piccirillo-E-M; Longinelli-A

SO: Chemical-Geology-; Isotope-Geoscience-Section. 86. (3). p. 225-237. YR: 1991

DE: Brazil-; geochemistry-; isotopes-; oxygen-; O-18/O-16; igneous-rocks; basalts-; tholeiite-; metasomatism-; processes-; hydrothermal-alteration; lava-; South-America; Parana-Basin; stable-isotopes; volcanic rocks; Lower-Cretaceous; Cretaceous-; basement-; crystalline-rocks; Precambrian-; whole-rock; rock-water-interface; wallrock-alteration

TI: Fluid inclusion and stable isotope evidence for interaction between granites and magmatic hydrothermal fluids during formation of disseminated and pipe-style mineralization at the Zaaiplaats tin mine.

AU: Pollard-P-J; Andrew-Anita-S; Taylor-R-G

SO: Economic-Geology-and-the-Bulletin-of-the-Society-of-Economic-Geologists. 86. (1). p. 121-141. YR: 1991

DE: South-Africa; economic-geology; tin-ores; fluid-inclusions; P-T-conditions; paleosalinity-; isotopes-; stable-isotopes; oxygen-; O-18/O-16; hydrogen-; D/H-; mineral-deposits; genesis-; ore-forming-fluids; deuterium-; geochemistry-; Southern-Africa; Africa-; metal-ores; inclusions-; granites-; hydrothermal-processes; mineral-deposits,-genesis; disseminated-deposits; pipes-; intrusions-; Zaaiplaats-Mine; host-rocks; Lease-Granite; Bobbejaankop-Granite; Lebowa-Granite-Suite; Bushveld-Complex; rare-earth; metals-; hydrothermal-alteration; metasomatism-; crystallization-; mineral-composition; geologic-thermometry; water-; salt-; evaporites-; chemically-precipitated-rocks; carbon-dioxide; ore-bodies; ore-grade

TI: A new kinetic approach to modeling water-rock interaction; the role of nucleation, and Ostwald ripening.

AU: Steefel-Carl-I; Van-Cappellen-Philippe

SO: Geochimica-et-Cosmochimica-Acta. 54. (10). p. 2657-2677. YR: 1990

DE: crystal-growth; sheet-silicates; clay-minerals; nucleation-; minerals-; igneous-rocks; granites-; rock-water-interface; geochemistry-; processes-; solution-; models-; kinetics-; dissolved-materials; hydrochemistry-; mineral-assemblages; surface-areas; Ostwald-ripening; weathering-; rainfall-; kaolinite-; silicates-; halloysite-; sheet-silicates-; clay-minerals; secondary-minerals; K-feldspar; alkali-feldspar; feldspar-group; framework-silicates; quantitative-analysis; phase-equilibria; muscovite-; mica-group; gibbsite-; oxides-

TI: The impact of synthetic leachate on the hydraulic conductivity of a smectitic till underlying a landfill near Saskatoon, Saskatchewan.

AU: Yanful-Ernest-K; Haug-Moir-D; Wong-Lionel-C

SO: Canadian - Geotechnical - Journal - - Revue - Canadienne - de - Geotechnique. 27. (4). p. 507-519. YR: 1990

AB: A water-moulded till used in the construction of a liner for a landfill was tested for low-gradient triaxial permeability over a 7-month period with six pore volumes of test leachate. At a hydraulic gradient of approximately 100 the hydraulic conductivity was 3.0×10^{-9} cm/s, compared with 6.0×10^{-9} cm/s for the water-permeated sample at the same gradient. The k was also evaluated at gradients of 20 and 50 during water permeation and found to be 8.0×10^{-9} and 6.8×10^{-9} cm/s, respectively. The slightly decrease in k with increase in gradient was attributed to a decrease in void ratio, resulting from a net increase in applied effective stress at the outflow end of the specimen. An assessment of the clay mineral composition of the till at the end of permeability testing did not show collapse of the smectite peak. Instead, the leachate appeared to have actually enhanced the smectite peak relative to the illite peak. It was concluded that the leachate did not have any detrimental impact on the till and that the hydraulic conductivity of the 0.3-m-thick liner underlying the landfill may not be expected to increase as a result of interaction with leachate.--Modified journal abstract.

TI: Modeling water-rock interaction in the surficial environment; the role of precursors, nucleation, and Ostwald ripening.

AU: Steefel-C-I; Van-Cappellen-Philippe; Nagy-K-L; Lasaga-A-C

SO: Chemical-Geology. 84. (1-4). p. 322-325. YR: 1990

DE: weathering-; geochemistry-; reactions-; phase-equilibria; crystal-growth; nucleation-; Ostwald-ripening; halloysite-; clay-minerals; sheet-silicates; silicates-; allophane-; kaolinite-; rock-water-interface; thermodynamic-properties; transformations-; theoretical-studies; models-

TI: The composition of weathering solutions on granitic rocks; comparison between field observations and water-rock interaction simulations based on thermodynamic and kinetic laws.

AU: Made-B; Fritz-Bertrand

SO: Chemical-Geology. 84. (1-4). p. 100-104. YR: 1990

DE: weathering-; geochemistry-; solution-; thermodynamic-properties; kinetics-; aqueous-solutions; pH-; phase-equilibria; SiO₂-Al₂O₃-Na₂O; rock-water-interface

TI: Platform limestone-shale basin interaction during diagenesis; an example from the Middle Ordovician of East Tennessee.

AU: Johnson-R-E; Walker-K-R; Armseth-R-W

SO: Abstracts - Society - of - Economic-Paleontologists-and-Mineralogists, -Annual-Midyear-Meeting. 1986 (Vol. 3). p. 57 YR: 1986

DE: Tennessee-; stratigraphy-; Ordovician-; Middle-Ordovician; eastern-Tennessee; Southern-U.S.; United-States; clay-minerals; sheet-silicates; silicates-; limestone-; carbonate-rocks; shale-; clastic-rocks; diagenesis-; sedimentary-basins; lithofacies-; tectonic-controls; oxides-; pore-water; mineral-composition

TI: The characteristics of fluorine in groundwater of North China and the significance of fluorite-water interaction to fluorine transportation.

AU: Shen-Zhaoli; Zhou-Mi; Tang-Minggao

SO: International-Symposium-on-Water-Rock-Interaction. 6. p. 801-804. YR: 1989

DE: China-; hydrogeology-; ground-water; fluorine-; geochemistry-; surveys-; Far-East; Asia-; Northern-China; halogens-; fluorite-; fluorides-; halides-; rock-water-interface; experimental-studies; theoretical-studies; solubility-; hydrochemistry-

TI: Thermal decompaction of rocks and its effect on permeability.

AU: Zaraisky-G-P (Zarayskiy, G. P.); Balashov-V-N; Zonov-S-V
 SO: International-Symposium-on-Water-Rock-Interaction. 6. p. 797-800. YR: 1989

DE: metamorphism-; interpretation-; compaction-; igneous-rocks; granites-; properties-; elastic-properties; temperature-; permeability-; microcracks-; grain-boundaries; porosity-; percolation-; hydrothermal-conditions; thermal-effects

TI: Experimental modelling of metasomatic zoning at fluid-rock interaction.

AU: Zaraisky-G-P (Zarayskiy, G. P.)
 SO: International-Symposium-on-Water-Rock-Interaction. 6. p. 793-796. YR: 1989

DE: metasomatism-; experimental-studies; zoning-; models-; geochemistry-; rock-water-interface; interpretation-; brucite-; oxides-; numerical-models; infiltration-

TI: Experimental study about the activation and migration of gold and silver in volcanic rocks.

AU: Liang-Xiangji; Qiao-Li
 SO: International-Symposium-on-Water-Rock-Interaction. 6. p. 785-788. YR: 1989

DE: mineral-deposits; genesis-; interpretation-; ore-forming-fluids; potassium-; geochemistry-; metal-ores; sodium-; China-; economic-geology; gold-ores; silver-ores; experimental-studies; gold-; metals-; silver-; alkali-metals; volcanic-rocks; mineral-deposits,-genesis; Far-East; Asia-; cyanides-; thiosulfate-ion; bicarbonate-ion

TI: Sorptive interactions between organic micropollutants and the mineral fraction of Permo-Triassic sandstone.

AU: Williamson-D-J; Lerner-D-L; Astin-M
 SO: International-Symposium-on-Water-Rock-Interaction. 6. p. 777-779. YR: 1989

DE: organic-materials; geochemistry-; pollutants-; soils-; pollution-; analysis-; processes-; sorption-; experimental-studies; continuous-flow-method; adsorption-; Permian-; Triassic-; sandstone-; clastic-rocks; sedimentary-rocks; rock-water-interface; minerals-; isotherms-; tracers-; environmental-geology; methods-

TI: Diverse fluid phases associated with the crystallisation and alteration of lithium pegmatites at Moylisha and Stranakelly, SE Ireland.

AU: Whitworth-Martin-P; Rankin-Andrew-H
 SO: International-Symposium-on-Water-Rock-Interaction. 6. p. 769-772. YR: 1989

DE: Ireland-; economic-geology; lithium-ores; mineral-deposits; genesis-; ore-forming-fluids; oxygen-; isotopes-; O-18/O-16; lithium-; geochemistry-; pegmatite-; Western-Europe; Europe-; southeastern-Ireland; granites-; lithium-pegmatite; alkali-metals; metals-; crystallization-; Leinster-Granite; metal-ores; stable-isotopes; P-T-conditions; barren-deposits; mineral-deposits,-genesis; Moylisha-; Stranakelly-; fluid-inclusions; inclusions-

TI: Electron transfer mechanisms associated with the surface dissolution and oxidation of magnetite and ilmenite.

AU: White-Art-F; Hochella-Michael-F Jr
 SO: International-Symposium-on-Water-Rock-Interaction. 6. p. 765-768. YR: 1989

DE: geochemistry-; processes-; solution-; ferrous-iron; electrons-; oxidation-; magnetite-; oxides-; ilmenite-; electron-transfer; mineral-water-interface; iron-; metals-; aqueous-solutions; Eh-; experimental-studies; iron-oxides; X-ray-spectra

TI: Surface structure and mineral dissolution kinetics; a Monte Carlo study.

AU: Wehrli-B
 SO: International-Symposium-on-Water-Rock-Interaction. 6. p. 751-753. YR: 1989

DE: crystal-structure; lattice-parameters; phase-equilibria; minerals-; weathering-; chemical-weathering; solution-; kinetics-; geochemistry-; Monte-Carlo-analysis; statistical-analysis; pH-; crystal-chemistry

TI: The paleohydrogeochemical conditions for the genesis of some sedimentary-reworked siderite deposits in China.

AU: Wang-Yanxin; Shen-Zhaoli
 SO: International-Symposium-on-Water-Rock-Interaction. 6. p. 743-746. YR: 1989

DE: China-; economic-geology; iron-ores; mineral-deposits; genesis-; sedimentary-processes; Far-East; Asia-; siderite-; carbonates-; reworking-; metal-ores; mineral-deposits,-genesis; stratabound-deposits; geochemistry-; ore-forming-fluids; models-

TI: Electrostatic approach for calculating mineral solubilities and complex formation in supercritical volatile-salt aqueous solutions.

AU: Walther-J-V; Schott-J
 SO: International-Symposium-on-Water-Rock-Interaction. 6. p. 731-733. YR: 1989

DE: metamorphism-; theoretical-studies; thermodynamic-properties; geochemistry-; properties-; solubility-; free-energy; volatiles-; electrical-properties; aqueous-solutions; P-T-conditions; dielectric-properties; ions-; rock-water-interface; complexing-

TI: Dissolution kinetics of calcite in CO₂-H₂O systems at 210 degrees C.

AU: Talman-S; Wiwchar-B; Gunter-W-D; Scarfe-C-M
 SO: International-Symposium-on-Water-Rock-Interaction. 6. p. 673-674. YR: 1989

DE: phase-equilibria; carbonates-; CO₂-H₂O; weathering-; minerals-; calcite-; geochemistry-; processes-; solution-; kinetics-; carbon-dioxide; aqueous-solutions; temperature-; experimental-studies; mineral-water-interface; rates-

TI: Alteration mineralogy of the Ellidaar geothermal field, Reykjavik, Iceland.

AU: Smarason-Omar-Bjarki; Tomasson-Jens; Ganda-Sugiarto
 SO: International-Symposium-on-Water-Rock-Interaction. 6. p. 643-646. YR: 1989

DE: Iceland-; economic-geology; geothermal-energy; metasomatism-; processes-; hydrothermal-alteration; Western-Europe; Europe-; Reykjavik-region; Ellidaar-Field; geothermal-fields; secondary-minerals; laumontite-; zeolite-group; framework-silicates; silicates-; low-temperature; mineral-composition; genesis-; properties-; mineral-water-interface; vugs-; polyphase-processes; chabasite-; thomsonite-; mesolite-; scolesite-; stilbite-; heulandite-; epidote-; epidote-group; sorosilicates-; orthosilicates-; chlorite-; chlorite-group; sheet-silicates

TI: Kinetics and non-stoichiometry of labradorite dissolution.

AU: Sjoberg-Lennart
 SO: International-Symposium-on-Water-Rock-Interaction. 6. p. 639-642. YR: 1989

DE: crystal-chemistry; framework-silicates; plagioclase-; labradorite-; minerals-; phase-equilibria; interpretation-; geochemistry-; processes-; solution-; feldspar-group; silicates-; kinetics-; framework-silicates-; plagioclase; pH-; temperature-; weathering-; mineral-water-interface

TI: Pressure dependence of mineral-water reaction equilibrium in the low pressure range.

AU: Hiroshi-Shinohara; Koichiro-Fujimoto
 SO: International-Symposium-on-Water-Rock-Interaction. 6. p. 635-638. YR: 1989

DE: phase-equilibria; experimental-studies; P-T-conditions; equilibrium-; low-pressure; mineral-water-interface; thermodynamic-properties; andalusite-; nesosilicates-; orthosilicates-; silicates-; quartz-; silica-minerals; framework-silicates; albite-; plagioclase-; feldspar-group; sodium-chloride; high-temperature; minerals-; geochemistry-

TI: Rare earth element geochemistry and evolution of submarine geothermal system accompanied by Kuroko sulfide-sulfate mineralization in Japan.

AU: Shikazono-N; Matsumoto-Ryo

SO: International-Symposium-on-Water-Rock-Interaction. 6. p. 633. YR: 1989

DE: Japan-; economic-geology; polymetallic-ores; mineral-deposits; genesis-; hydrothermal-processes; rare-earths; geochemistry-; europium-; cerium-; trace-elements; metals-; geothermal-systems; kuroko-type; sulfides-; sulfates-; Far-East; Asia-; anomalies-; host-rocks; volcanic-rocks; basalts-; Eh-; marine-environment; environment-; metal-ores; mineral-deposits,-genesis

TI: Mixing diagrams of hydrothermal solutions and their applications to some hydrothermal ore deposits in Japan.

AU: Shibue-Yasuhiro

SO: International-Symposium-on-Water-Rock-Interaction. 6. p. 625-628. YR: 1989

DE: Japan-; economic-geology; tungsten-ores; mineral-deposits; genesis-; hydrothermal-processes; fluid-inclusions; geochemistry-; Far-East; Asia-; metal-ores; mixing-; graphic-methods; temperature-; chloride-ion; ore-forming-fluids; inclusions-; Fujigatani-Deposit; Kiwada-Deposit; Kaneuchi-Deposit; Ohtani-Deposit; Yaguki-Deposit; mineral-deposits,-genesis; methods-; paleosalinity-

TI: A comparison of pyrite oxidation rates in batch, mixed flow, and plug flow reactors.

AU: Rimstidt-J-Donald; Newcomb-William-D

SO: International-Symposium-on-Water-Rock-Interaction. 6. p. 581-584. YR: 1989

DE: geochemistry-; processes-; oxidation-; iron-; pyrite-; sulfides-; experimental-studies; methods-; reactions-; ferric-iron; metals-; mineral-water-interface

TI: The effect of iron and magnesium on the stability of illite and smectite.

AU: Raz-Urs; Peters-Tjerk

SO: International-Symposium-on-Water-Rock-Interaction. 6. p. 569-572. YR: 1989

DE: iron-; geochemistry-; clay-minerals; magnesium-; clay-mineralogy; experimental-studies; stability-; phase-equilibria; sheet-silicates; minerals-; metals-; alkaline-earth-metals; illite-; silicates-; smectite-; ferric-iron; ferrous-iron; thermodynamic-properties; muscovite-; mica-group; celadonite-; pyrophyllite-

TI: Quench fractionation in Columbia River Basalt and implications for basalt-ground water interaction.

AU: Hoover-James-D; Murphy-William-M

SO: Special-Paper-Geological-Society-of-America. 239. p. 307-320. YR: 1989

DE: Columbia-Plateau; petrology-; igneous-rocks; basalts-; chemical-fractionation; Columbia-River-Basalt; Grande-Ronde-Basalt; Cohasset-Basalt; Western-U.S.; United-States; North-America; volcanic-rocks; ground-water; composition-; glasses-; mineral-composition; differentiation-; crystallization-; major-elements; chemical-composition; cooling-

TI: Interaction between surface water and basalt flows of the Grand Ronde Formation, Columbia River basalt group; secondary hydroexplosion structures.

AU: Orzol-L-L; Cummings-M-L

SO: Bulletin-New-Mexico-Bureau-of-Mines-and-Mineral-Resources. 131. p. 209. YR: 1989

DE: Washington-; stratigraphy-; Miocene-; Idaho-; petrology-; igneous-rocks; Grande-Ronde-Basalt; Columbia-River-Basalt; surface-water; basalts-; volcanic-rocks; phreatomagmatism-; northeastern-Oregon; Grande-Ronde-River; Wenaha-River; lava-; textures-; lava-flows; volcanic-breccia; breccia-; clastic-rocks; mixing-; oxidation-; Mossbauer-spectra; shear-; fractures-; vaporization-; joints-; patterns-; magnetite-; oxides-; Neogene-; Tertiary-; Pacific-Coast; Western-U.S.; United-States

TI: Calculating the theoretical change in the mode of a rock by simple and ideal water-rock interaction.

AU: Tsuzuki-Yoshiro

SO: Geochemical-Journal. 23. (3). p. 117-128. YR: 1989

DE: metasomatism-; processes-; hydrothermal-alteration; phase-equilibria; minerals-; theoretical-studies; rock-water-interface; mineral-composition; dissolved-materials; reactions-; precipitation-; physicochemical-properties; matrix-; geothermal-gradient; temperature-; models-; mineral-assemblages; veins-; wallrock-alteration; petrology-; gibbsite-; oxides-; kaolinite-; clay-minerals; sheet-silicates; silicates-; quartz-; silica-minerals; framework-silicates; solubility-; equations-; qualitative-analysis

TI: The effect of temperature gradient on the interaction between geothermal water and rock; an approach by numerical simulation.

AU: Takeno-Naoto

SO: Mining-Geology. 39. (5(217)). p. 295-304. YR: 1989

DE: metasomatism-; processes-; hydrothermal-alteration; mineral-deposits; genesis-; hydrothermal-processes; igneous-rocks; pyroclastics-; tuff-; alteration-; mineral-deposits,-genesis; geochemistry-; experimental-studies; volcanic-rocks

TI: Epidosites; implications for water/rock interaction in submarine hydrothermal systems.

AU: Bettison-Lori-A; Schiffman-Peter; Smith-Brian-M

SO: Anonymous. AGU 1987 fall meeting. Eos,-Transactions,-American-Geophysical-Union. 68. (44). p. 1546 YR: 1987

DE: metasomatic-rocks; mineral-assemblages; interpretation-; epidosite-; epidotization-; hydrothermal-alteration; metasomatism-; hydrothermal-conditions; salinity-; chemical-composition; oxygen-; isotopes-; O-18/O-16; stable-isotopes; vents-

TI: Thermobarometry of hydrothermal alteration in the Los Azufres geothermal system (Michoacan, Mexico); significance of fluid-inclusion data.

AU: Cathelineau-M; Izquierdo-G; Nieva-D

SO: Chemical-Geology. 76. (3-4). p. 229-238. YR: 1989

DE: Mexico-; economic-geology; geothermal-energy; metasomatism-; processes-; hydrothermal-alteration; fluid-inclusions; P-T-conditions; geologic-thermometry; Michoacan-; Los-Azufres; reservoir-properties; geothermal-fields; geologic-barometry; inclusions-; mineral-inclusions; hydrothermal-conditions

TI: Kinetics of the interaction of plagioclase with a water-salt fluid at 500 degrees C and Pfl 1 kbar.

AU: Kotel'-nikov-A-R; Shchekina-T-I

SO: Geochemistry-International. 24. (4). p. 13-22. YR: 1987

DE: geochemistry-; processes-; ion-exchange; phase-equilibria; framework-silicates; plagioclase-; P-T-conditions; feldspar-group; silicates-; minerals-; framework-silicates,-plagioclase; kinetics-; chemical-composition

TI: Geochemistry of groundwater-lake interaction in a carbonate terrain; application to geochemical exploration.

AU: Welhan-J-A; Millar-W-D; Gale-J-E

SO: Canadian-Geophysical-Union,-Joint-Annual-Meeting. 13. p. A133
YR: 1988

DE: Newfoundland-; geochemistry-; water-; ground-water; lakes-; lacustrine-features; carbonate-rocks; saturation-; calcite-; carbonates-; runoff-; mathematical-models; models-; PHREEQE-; data-processing; mixing-; carbon-dioxide; Daniel's-Harbour; western-Newfoundland; Eastern-Canada; Canada-; discharge-; zinc-; metals-; mineral-exploration; geochemical-methods; zinc-ores; metal-ores

TI: Geochemical modelling of water-rock interaction in deep groundwater.

AU: Pitkanen-P; Pirhonen-V; Snellman-M

SO: Water-Science-and-Technology. 20. (3). p. 245-246. YR: 1988

DE: Finland-; hydrogeology-; ground-water; geochemistry-; models-; surveys-; Scandinavia-; Western-Europe; Europe-; Lavia-; rock-water-interface; PHREEQE-; EQ-3/6; chemical-composition; mineral-composition; intrusions-; equilibrium-; igneous-rocks

TI: Partition between trace and major elements during mineral dissolution.

AU: Michard-Gil

SO: International-Symposium-on-Water-Rock-Interaction. 5. p. 386-389. YR: 1986

DE: crystal-chemistry; sulfates-; partitioning-; trace-elements; major-elements; solution-; partition-coefficients; precipitation-; solubility-

TI: Chemical and isotopic systematics of oceanic hot springs.

AU: Bowers-Teresa-Suter

SO: International-Symposium-on-Water-Rock-Interaction. 5. p. 76-78. YR: 1986

DE: Pacific-Ocean; oceanography-; ocean-floors; rock-water-interface; sea-water; basalts; volcanic-rocks; hot-springs; springs-; oxygen-; hydrogen-; isotopes-; O-18/O-16; stable-isotopes; D/H-; deuterium-; sulfur-; S-34/S-32; mid-ocean-ridge-basalts; mineral-composition; East-Pacific-Rise; thermal-waters; hydrogeology-

TI: Groundwater/rock interaction; water interaction with clinker from Powder River basin.

AU: Herring-James-R; Wilson-Stephen-A

SO: American-Geophysical-Union. 68. (44). p. 1291 YR: 1987

DE: United-States; hydrogeology-; ground-water; water-; clinker-; mineral-composition; composition-; temperature-; aquifers-; water-quality; Western-U.S.; Southwestern-U.S.; experimental-studies; hydrochemistry-; geochemistry-

TI: (18)O/(16)O evidence for fluid-rock interaction in the upper mantle; data from ultramafic nodules and K-rich volcanic rocks in Italy.

AU: Taylor-Hugh-P Jr; Gregory-Robert-T; Turi-Bruno

SO: Mathematical-and-Physical-Sciences. 218. p. 1-37. YR: 1987

DE: Italy-; geochemistry-; isotopes-; oxygen-; O-18/O-16; magmas-; differentiation-; fractional-crystallization; igneous-rocks; volcanic-rocks; Southern-Europe; Europe-; ultramafic-composition; stable-isotopes; rock-water-interface; upper-mantle; mantle-; alkali-basalts; basalts-; kimberlite-; ultramafics-; mineral-composition; concretions-; secondary-structures; sedimentary-structures; open-systems; Alban-Hills; Mount-Vulsini

TI: Interaction of organic acids with carbonate mineral surfaces in seawater and related solutions; I, Fatty acid adsorption.

AU: Zullig-James-J; Morse-John-W

SO: Geochimica-et-Cosmochimica-Acta. 52. (6). p. 1667-1678. YR: 1988

DE: sea-water; geochemistry-; organic-materials; fatty-acids; processes-; adsorption-; diagenesis-; carbonates-; aqueous-solutions; solubility-; calcite-; aragonite-; dolomite-; magnesite-; desorption-; thermodynamic-properties

TI: A study of lake-ground water interaction in west-central Minnesota; Mineral Lake.

AU: McArdell-Brian-W; Leete-Jeanette-H; Nohring-Eric

SO: American-Geophysical-Union. 68. (44). p. 1274 YR: 1987

DE: Minnesota-; hydrogeology-; hydrology-; Ottertail-; Midwest-; United-States; lakes-; ground-water; surveys-; west-central-Minnesota; Mineral-Lake; Ottertail-County; legislation-; changes-of-level; water-management; laboratory-studies

TI: The interaction of water with clay mineral surfaces.

AU: Newman-A-C-D

SO: Monograph-Mineralogical-Society. 6. p. 237-274. YR: 1987

DE: clay-mineralogy; experimental-studies; water-; spectra-; EPR-spectra; isotherms-; ions-; vermiculite-; clay-minerals; sheet-silicates; silicates-; montmorillonite-; beidellite-; smectite-; sepiolite-; palygorskite-; mixed-layer-minerals; sorption-; halloysite-; thermodynamic-properties; infrared-spectra; expansive-materials; mathematical-models; models-

TI: Interaction of radium with freshwater sediments and their mineral components; III, Muscovite and feldspar.

AU: Benes-P; Borovec-Z; Strejc-P

SO: Journal-of-Radioanalytical-and-Nuclear-Chemistry. 90. (1). p. 91-103. YR: 1986

DE: radium-; isotopes-; Ra-224; sediments-; geochemistry-; freshwater-environment; adsorption-; desorption-; radioactive-tracers; muscovite-; mica-group; sheet-silicates; silicates-; feldspar-group; framework-silicates; albite-; plagioclase-; migration-; composition-; mineral-composition

TI: Mineral alteration and fluids characterization of Miravalles geothermal field, Costa Rica.

AU: Pietro-Viale; Corrales-Rodrigo; Maineri-Alfredo; Mayra-Corella; Vaca-Leonel

SO: International-Symposium-on-Water-Rock-Interaction. 5. p. 667-670. YR: 1986

DE: Costa-Rica; hydrogeology-; thermal-waters; Central-America; geothermal-fields; Miravalles-; mineral-assemblages; hydrothermal-alteration; metasomatism-; northeastern-Costa-Rica; aquifers-; chemical-composition; rock-water-interface

TI: Experimental study of the interaction between carbonate rocks and F-bearing solutions under a flow condition at elevated pressure and temperatures.

AU: Yishan-Zeng; Juying-Wei; Dingguo-Xiong

SO: International-Symposium-on-Water-Rock-Interaction. 5. p. 656-659. YR: 1986

DE: China-; economic-geology; mineral-resources; P-T-conditions; carbonate-rocks; fluorine-; rock-water-interface; chemical-composition; thermodynamic-properties; mineral-assemblages; hydrothermal-alteration; metasomatism-; hydrothermal-processes; mineral-deposits,-genesis; Far-East; Asia-; Inner-Mongolia; Northern-China

TI: The geochemical environment of formation of the unconformity uranium deposits of northern Australia.

AU: Vidale-Buden-Rosemary

SO: International-Symposium-on-Water-Rock-Interaction. 5. p. 597-600. YR: 1986

DE: Northern-Territory; economic-geology; uranium-ores; metal-ores; mineral-deposits,-genesis; unconformities-; chemical-composition; metasedimentary-rocks; host-rocks; schists; mineral-assemblages; ore-forming-fluids; Nabarlek-; Jabiluka-; Ranger-; Koongarra-; Australia-; Australasia-

TI: Hydrothermal alteration in wells LA-3, LA-4 and LA-6 Aluto-Langano geothermal field, Ethiopia.

AU: Teklemariam-Meseret

SO: International-Symposium-on-Water-Rock-Interaction. 5. p. 565-568. YR: 1986

DE: Ethiopia-; petrology-; metasomatism-; geothermal-fields; East-Africa; Africa-; wells-; hydrothermal-alteration; Aluto-; Langano-; permeability-; high-temperature; clay-minerals; sheet-silicates; silicates-; carbon-dioxide; mineral-assemblages; basalts-; volcanic-rocks; geologic-thermometry

TI: The chemical characteristics of the hydrothermal fluids at the Krafla and Reykjanes systems, as inferred from the coexisting mineralogy.

AU: Sveinbjornsdottir-Arny-E

SO: International-Symposium-on-Water-Rock-Interaction. 5. p. 546-549. YR: 1986

DE: Iceland-; hydrogeology-; thermal-waters; Western-Europe; Europe-; Krafla-; hydrothermal-alteration; metasomatism-; geothermal-systems; mineral-assemblages; chemical-composition; smectite-; clay-minerals; sheet-silicates; silicates-; chlorite-; chlorite-group; amphibole-group; chain-silicates; epidote-; epidote-group; sorosilicates-; orthosilicates-; Reykjanes-Peninsula

TI: Acid hydrothermal alteration occurrences in Philippine geothermal areas.

AU: Reyes-Agnes-G

SO: International-Symposium-on-Water-Rock-Interaction. 5. p. 461-465. YR: 1986

DE: Philippine-Islands; petrology-; metasomatism-; hydrothermal-alteration; Far-East; Asia-; mineral-assemblages; acids-; geothermal-fields; pH-; fluid-inclusions; chemical-composition; Palimpinon-; hot-springs; springs-; fumaroles-; SEM-data; petrography-; rock-water-interface; oxidation-; hydrolysis-

TI: Study on experiments of iron-bearing ore solution formed by interaction of potassium-sodium halogenide water with rocks.

AU: Liang-Xiangji

SO: International-Symposium-on-Water-Rock-Interaction. 5. p. 368-371. YR: 1986

DE: China-; economic-geology; iron-ores; experimental-studies; rock-water-interface; high-temperature; high-pressure; Far-East; Asia-; solution-; metal-ores; potassium-; sodium-; geochemistry-; hydrothermal-processes; ore-forming-fluids; mineral-deposits,-genesis; diabase-

TI: Moderate temperature zeolitic alteration in a cooling pyroclastic deposit.

AU: Levy-Schon-S; O'-Neil-James-R

SO: International-Symposium-on-Water-Rock-Interaction. 5. p. 361-364. YR: 1986

DE: Nevada-; petrology-; metasomatism-; Nye-; Topopah-Spring-Member; Paintbrush-Tuff; pyroclastics-; volcanic-rocks; Yucca-Mountain; southwestern-Nevada; Western-U.S.; United-States; zeolite-group; framework-silicates; silicates-; alteration-; temperature-; cooling-; zeolitization-; oxygen-; isotopes-; O-18/O-16; stable-isotopes; smectite-; clay-minerals; sheet-silicates; Nye-County; vitrophyre-; mineral-assemblages; hydrothermal-alteration; Miocene-; Neogene-; Tertiary-

TI: The distribution of alteration phases during basalt-groundwater interactions; preliminary insights from flow-through experiments.

AU: Lane-D-L; Rawson-S-A; Allen-C-C; Burnell-J-R

SO: International-Symposium-on-Water-Rock-Interaction. 5. p. 349-452. YR: 1986

DE: Washington-; engineering-geology; waste-disposal; rock-water-interface; basalts-; volcanic-rocks; ground-water; Pacific-Coast; Western-U.S.; United-States; repository-; radioactive-waste; construction-; experimental-studies; alteration-; mineral-assemblages; movement-

TI: Alteration mineralogy and groundwater composition in the East Bull Lake anorthosite-gabbro complex, NE Ontario, Canada.

AU: Kamineni-D-C; Gascoyne-M

SO: International-Symposium-on-Water-Rock-Interaction. 5. p. 310-312. YR: 1986

DE: Canadian-Shield; hydrogeology-; ground-water; East-Bull-Lake; anorthosite-; gabbros-; North-America; plutonic-rocks; alteration-; rock-water-interface; epidote-; epidote-group; sorosilicates-; orthosilicates-; silicates-; amphibole-group; chain-silicates; prehnite-; sheet-silicates; pumpellyite-; zeolite-group; framework-silicates; P-T-conditions; clay-minerals; chemical-composition; hydrogen-; oxygen-; metamorphism-; mineral-assemblages; low-grade-metamorphism; isotopes-; D/H-; stable-isotopes; O-18/O-16

TI: Hydrothermal alteration at Mururoa Atoll (French Polynesia).

AU: Dudoignon-P; Meunier-A; Beaufort-D; Gachon-A; Buigues-D

SO: International-Symposium-on-Water-Rock-Interaction. 5. p. 175-178. YR: 1986

DE: Polynesia-; petrology-; metasomatism-; French-Polynesia; Mururoa-Atoll; Tuamotu-Islands; basalts-; volcanic-rocks; hydrothermal-alteration; secondary-minerals; physicochemical-properties; electron-probe-data; paragenesis-; trachytes-; mineral-assemblages; olivine-; olivine-group; nesosilicates-; orthosilicates-; silicates-; ankerite-; carbonates-; calcite-; nontronite-; clay-minerals; sheet-silicates

TI: Tourmalines in hydrothermal mineral assemblages from Larderello geothermal field (Italy).

AU: Cavarretta-Giuseppe; Puxeddu-Mariano

SO: International-Symposium-on-Water-Rock-Interaction. 5. p. 108-111. YR: 1986

DE: Italy-; petrology-; metamorphism-; Larderello-; Southern-Europe; Europe-; mineral-assemblages; tourmaline-; ring-silicates; silicates-; geothermal-fields; authigenic-minerals; contact-metamorphism; emplacement-; San-Pompeo-Well

TI: A nodal domain integration model of two-dimensional heat and soil-water flow coupled by soil-water phase change.

AU: Hromadka-Ted

SO: International - Journal - of - Rock - Mechanics - and - Mining Sciences -and- Geomechanics-Abstracts. 87-9. 124 p. YR: 1987

AB: A model of phase change in freezing and thawing soils is developed for cold regions engineering problems which require two-dimensional analysis of the thermal regime of soils. These problems include complex boundary conditions such as atmosphere/ground surface thermal interaction and snowpack insulation. Other concerns include complex soil conditions such as the presence of a peaty muskeg or tundra-like soil which may provide thermal insulation for underlying muskeg or tundra-like soil which may provide thermal insulation for underlying ice-rich mineral soil. A simple two-dimensional model is developed for use in cold regions engineering studies. A Fortran computer program is available which accommodates two-dimensional heat and soil-water flow models as coupled by an isothermal phase change model. The program can be used to analyze two-dimensional freezing-thawing problems which have sufficient known information to supply the necessary modeling parameters, boundary conditions, and initial conditions.--Modified journal abstract.

Özler / Abstracts

Erdin Bozkurt, Brian K. Holdsworth and Ali Koçyiğit, 1997: *Implications of Jurassic chert identified in the Tokat Complex, northern Turkey*: *Geol. Mag.* 134 (1), 91-97.

Abstract: The Tokat Complex is a strongly deformed tectono-sedimentary mixture of low-grade metamorphic rocks with abundant recrystallized limestone and relatively rare serpentinite and radiolarian chert in blocks of variable size. Samples from the radiolarian chert blocks, found in highly crushed zones, each of which corresponds to a thrust sheet within an imbricate thrust zone, have yielded a Tithonian fossil assemblage. They are interpreted as tectonic inclusions emplaced within the Tokat Complex after its main post-early Permian-pre-Permian metamorphism, and were derived from the rifting and opening of a Neotethyan ocean. The presence of Tithonian blocks within low-grade metamorphic rocks of the Tokat Complex shows that Tethys ocean was in existence in this region by latest Jurassic time. We also suggest that the presence of ophiolitic slices imbricated with the Pontide basement, Tokat Complex, explains the swarm of North Anatolian Fault Zone (NAFZ) splays in this region where the NAFZ likely followed a major pre-existing crustal weakness (Figs. 1-2).

Nilüfer A. Saraç, 1996, *Seismo-Tektonic Characteristics of the North Anatolian Fault Zone Between Akyazı and Düzce (Bolu, Turkey)*: *International Geology Review*, vol. 38 p: 876-882

Abstract: The active Anatolian fault zone (NAFZ) presents very complex seismo-tectonic activity. The occurrence of the Abant earthquake in 1957 ($M_s=7.1$) and the Mudurnu earthquake in 1967 ($M_s=6.8$) are only two examples of several seismic events associated with intense tectonic activity of the NAFZ. Statistical analyses of earthquakes in an area extending between $30^{\circ} 30'$ to $31^{\circ} 30'$ E Long. and $40^{\circ} 15'$ to $41^{\circ} 00'$ N Lat. reveal that epicenters generally were shallow. However, a few deep epicenters also were located, some of which reached a depth of 30 km. The epicenters were found to concentrate in a zone lying between the Düzce and Akyazi Plain to the north of Almacik Mountain and in the Adapazarı Plain. The Northern Anatolian fault displays an echelon character in the area, except for the eastern part, where it extends as a single segment. The en echelon character of the NAFZ is interpreted as a structure distributing the potential energy and consequently reducing the intensity of earthquakes, giving rise to micro-earthquakes of magnitudes less than 4.2 (Fig. 7).

Figure 7. A. Depth histogram of micro-earthquakes, in km. B. Magnitude (M_s) histogram of micro-earthquakes.

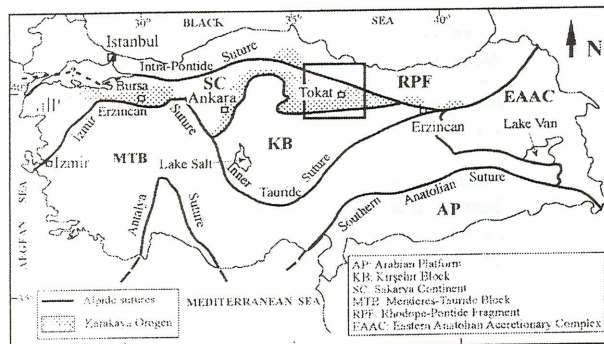


Figure 1. Summary map showing distribution of Karakaya complex and the location of the study area (slightly modified after Tüysüz & Yigitbaş, 1994).

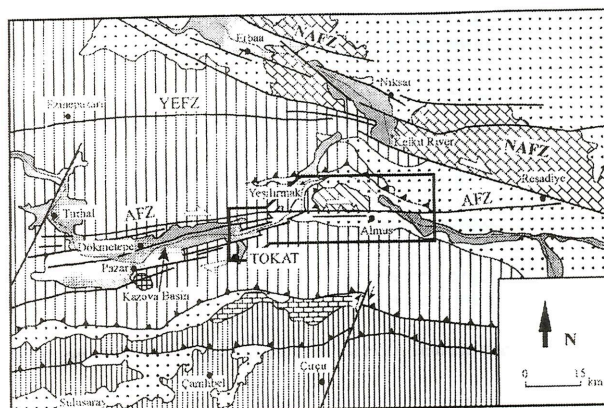
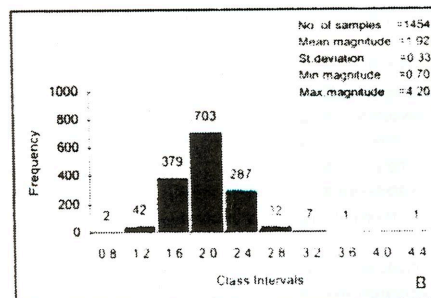
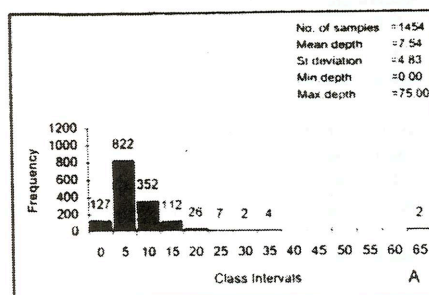


Figure 2. Map showing the regional setting of the study area and the regional distribution of Tokat metamorphic rocks. The half arrows show the relative motion sense on the faults. AFZ-Almus Fault Zone, NAFZ-North Anatolian Fault Zone, YEFZ-Yağmurlu Ezinepazar Fault zone (modified after Bozkurt & Koçyiğit, 1995a). For location see Figure 1.



W.T. Dean, F. Martin, O. Monod, Y. Günay, H. Kozlu and N. Bozdoğan, 1997, *Precambrian and Cambrian stratigraphy of the Penbeğli-Tut inlier, southeastern Turkey*: *Geol. Mag.* 134(1), 37-53.

Abstract: The oldest rocks in the Penbeğli-Tut inlier of southeastern Turkey belong to the Meryemuşağı Formation (base not seen); they are mostly clastic rocks of late Precambrian age, overlain with angular unconformity by unfossiliferous quartzites (270 m est.) of the Zabuk Formation. The latter unit is succeeded conformably by the Koruk Formation (Lower-/Middle Cambrian), comprising almost 200 m of dolomite and grey and red nodular limestone, and the Sosink Formation (Middle Cambrian), about 600 m of silty mudstone and sandstone with a few thin limestone beds, overlain unconformably by Cretaceous carbonates. The closest comparison is with the Derik-Mardin area, 220 km to the east, where the section is more complete. The upper Koruk Formation contains trilobites of the Pardailhania and Solenopleuropsis biozones; trilobites from the Sosink Formation indicate the Solenopleuropsis Biozone, a post-Solenopleuropsis interval, and a level

with *Holasaphus mesopotamicus*, known only from the Derik area. Acritarchs from the highest Koruk Formation and the whole of the Sosink belong to the lower part of microfara A2, described from the Middle Cambrian of eastern Newfoundland (Fig. 2-3).

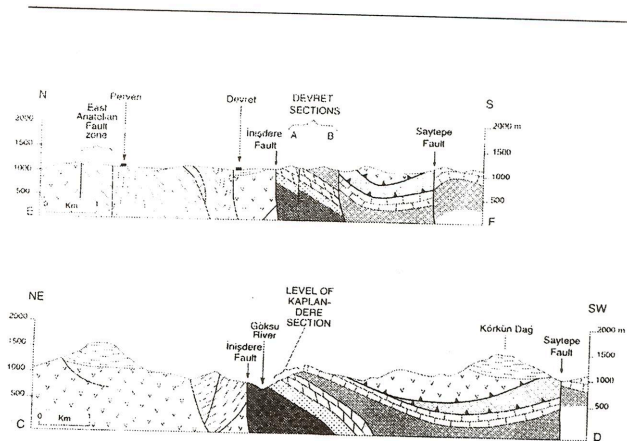


Figure 3. Transverse sections in the western (E-F) and eastern (C-D) parts of the inlier. For location and key, see Figure 2 (Dean ve diğ., 1997-Abstract).

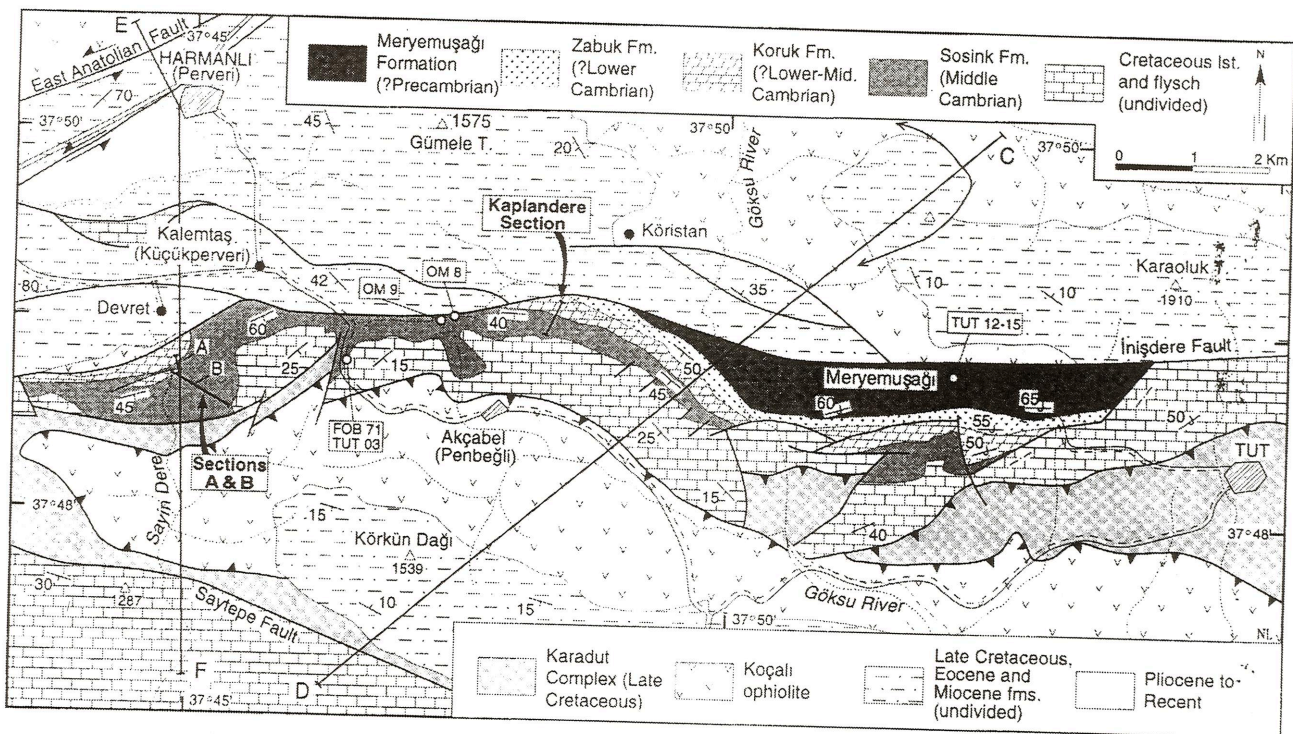


Figure 2. Geological map (courtesy T.P.A.O., with emendations) of part of the Penbeğli-Tut inlier. Note recent changes to certain older place names, which are shown in parentheses. Letters A and B denote measured sections south of Devret (Dean ve diğ. 1997).

A.Poisson, J.C. Guezou, A. Öztürk, S. İnan, H. Temiz, H. Gürsoy, K.S. Kavak and S. Özden, 1996, *Tectonic Setting and Evolution of the Sivas Basin, Central Anatolia, Turkey*; *International Geology Review*, Vol. 38, p: 838-353.

Abstract: The Sivas Basin is one of several Central Anatolian basins. It developed mainly after the closure of the northern branch of Neotethys. Its location between the Kırşehir Massif and the Taurides implies that it should not be confused with the Inner Tauride ocean located south of the Eastern Taurides. The basement of the Sivas Basin consists of ophiolitic nappes and mélanges that were thrust toward the margins of the continental blocks present in this area—the Pontide belt to the north and the Anatolide-Tauride platform to the south. The basin was initiated by tectonic subsidence at the end of the Cretaceous, and it can be compared to a foreland basin during Paleocene and early to middle Eocene time. It was emergent during late Eocene and Oligocene time, although it continued to subside. A transgression in some parts of the basin occurred during the Oligocene and early Miocene (maximum flooding). During the Pliocene, it was affected by regional compression directed toward the NNW, which resulted from convergence of the Arabian and Eurasian plates. This basin may have developed as an intracontinental basin within the Tauride platform and probably never had an oceanic basement. As a result of this work, the general paleogeographic organization of Central Anatolia and Northern Tethys during the Mesozoic should to be revised.

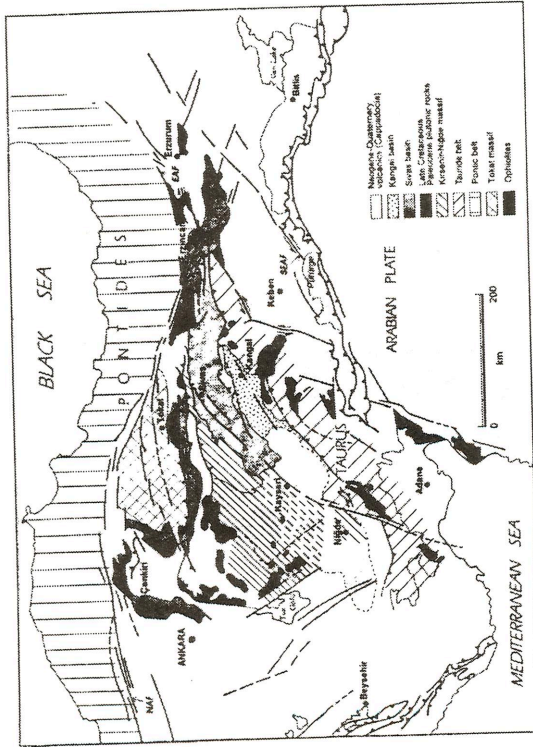


Figure 1. Location of the Sivas Basin in the geodynamic context of the Middle East.

KASIM 1997

Sempozyum / Seminer / Konferans

I. ULUSAL KIRMATAŞ SEMPOZYUMU '96

Kırmataşlar konusunda ilk yapılan ulusal sempozyumu, TMMOB Maden Mühendisleri Odası (İstanbul Şubesi) ile TMMOB Jeoloji Mühendisleri Odası (İstanbul Şubesi) tarafından, 7-8 Ekim 1996 tarihinde İstanbul'da gerçekleştirilmiştir. Yaklaşık 30'a yakın bildirinin verildiği sempozyumda, bildiri- lere ait makale metinleri bildiriler kitabı olarak basılmıştır. 24 Makaleden oluşan bu kitabın içindekiler aşağıda verilmiştir.

I. ULUSAL KIRMATAŞ SEMPOZYUMU '96
BİLDİRİLER KİTABI

I. ULUSAL KIRMATAŞ SEMPOZYUMU

'96

7 - 8 EKİM 1996
İSTANBUL



TMMOB
MADEN MÜHENDİSLERİ ODASI
İSTANBUL ŞUBESİ



TMMOB
JEOLOJİ MÜHENDİSLERİ ODASI
İSTANBUL ŞUBESİ

İÇİNDEKİLER

Kırmataş Hammaddeleri ve Standartları
Dr. Vildan ESENLİ

Endüstriyel Kullanım Açısından Karbonat Kayaçları
Doç. Dr. M. Sezai KIRIKOĞLU

Dünyadaki Geri Kazanılmış Agrega Üretim ve Politikalarının
Gözden Geçirilmesi ve Ülkemiz Açısından İrdelenmesi
Prof. Dr. Ergin ARIOĞLU, Dr. Özgür S. KÖYLÜOĞLU,
Dr. Nihal ARIOĞLU

Kocaeli-Gebze İlçesi, Tavşanlı Köyü Civarındaki Kireçtaşı Sahalarının Jeolojisi Rezerv Analizi ve İstanbul Metropolü Yönünden Önemi

Doç. Dr. R. Hayri EREN, Prof. Dr. Erkin NASUF, Doç. Dr. Gündüz ÖKTEN, Doç. Dr. Tayfun EVERGEN

Zonguldak Bölgesi Kum-Çakıl-Kırmetaş Yataklarının Etüdü
Y. Doç. Dr. İbrahim BUZKAN

Ş. Urfa Ovası Sulaması IV. Kısım İnşaatı Betonlarında Kullanılan Kırmetaş Kalker Agreganın Taşunu ile İyileştirilmesi
Fatih KOCABEYLER

Sarıbayır Kuvars Kum Ocağı Patlatmalarının Çevreye Etkisinin İncelenmesi

Doç. Dr. Tayfun EVERGEN, Y. Doç. Dr. Cengiz KUZU

Optimum Parçalanma ve Taşocağı İşletmeciliğinde Verim
Ö. Yılmaz ERKOÇ

Mermer Atıklarının Maden İşletmelerinde Stabilizasyon Amaçlı Değerlendirilebilirliği

Doç. Dr. Lütfullah GÜNDÜZ, Doç. Dr. Ahmet ŞENTÜRK

KKTC Kırmetaş Endüstrisine Bakış
Mehmet NECDET, Zekai GÖKER

Beton ve Asfalt Molozları, Yüksek Fırın Cürufu ve Benzeri Atıkların İnşaat Malzemesi Olarak Değerlendirilmesi

Ali KIZILAY

Yapı Merkezi Prefabrikasyon A.Ş.'de Beton Agregası Kalite Denetimi ve Değerlendirilmesi

Orhan MANZAK, Adnan DONDURMACI, Dr. Özgür S. KÖYLÜOĞLU, Prof. Dr. Ergin ARIOĞLU

Mahmutbey-Paşa Değirmeni (İstanbul) Civarı Kırmetaş Ocakları Jeolojisi ve Petrografik İncelenmesi

Prof. Dr. Bektaş UZ

Hazır Beton Sektörü Açısından Agregası Sektörüne Bakış
Cengiz KOCA

Kırmetaş Kalitesi İçin Maden Mühendisliği Disiplini
Ö. Yılmaz ERKOÇ

Kırmetaş Endüstrisinde Yeni Kazı Teknolojileri
Prof. Dr. Nuh BİLGİN, Araş. Gör. Cemal BALCI

Küçükçekmece İlçesi İkitelli Köyünde Bulunan Pafta No: 2666 Olan Taşocağı Sahasının Jeolojisi ve İşletilebilirlik Etüdü
Doç. Dr. Tayfun EVERGEN, Doç. Dr. R. Hayri EREN

Kırmetaş Tozunun Betonda Kullanılabilirliği
Dr. Necip TERZİBAŞIOĞLU

Filler Malzemelerin Betonun Mekanik Özelliklerine ve Durabilitesine Etkisi

Y. Doç. Dr. Canan TAŞDEMİR, Hakan N. ATAHAN

Orhangazi (Bursa) Mermerleri, Özellikleri ve Kullanım Yönünden Değerlendirilmesi

Prof. Dr. Bektaş UZ

Boyut Küçültme Teknolojisindeki Yenilikleri

Prof. Dr. Yalçın KAYTAZ, Araş. Gör. İsmail YILDIRIM

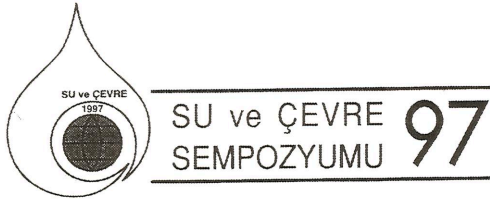
Taşunu Kullanımının Beton Özellikleri Üzerindeki Etkisi
Ali UĞURLU

Sivas ve Dolayındaki Doğal ve Kırmetaş Ocaklarından Elde Edilen Agregaların Yapı Gereci Olarak Kullanılabilirliği
Fuat ERDEM, Ali Burak YENER, Zafer ÖZGÖRÜN, Atilla TURABİK

Otoyol İnşasında Kırmetaş Ocağı Seçimi: Bir Vaka Analizi
Dr. Süleyman DALGIÇ, A. Malik GÖZÜBOL, Selahattin HASDEMİR

SU VE ÇEVRE SEMPOZYUMU

2-5 Haziran 1997 tarihinde TMMOB Jeoloji Mühendisleri Odası İstanbul Şubesi ile Bakırköy Belediyesi-Çevre Koruma Müdürlüğü tarafından gerçekleştirilen "Su ve Çevre Sempozyumu 1997"de 55 bildiri sunulmuş ve bu bildiri metinleri Bildirilen Kitabı altında toplanmıştır. Sempozyumda genellikle Su, Çevre ve Kentleşme çerçevesinde bildiriler sunulmuştur. Bildiriler kitabında yer alan makale bibliyografyası aşağıda verilmiştir.



BİLDİRİLER



İÇİNDEKİLER

İstanbul Su Havzalarının Korunması İçin Yeni Bir Yöntem Modeli : **Dr. Ali Talip ÖZDEMİR**

Hızlı Kentleşmenin Yüzeysuları ve Yeraltıları Üzerindeki Etkilerinin İstanbul-Bakırköy Su Havzası Örneğinde İncelenmesi ve Bakırköy Sutaşındaki Sorunların Çözümünde Yapay Besleme Yönteminin Yeri : **Doç. Dr. Turgut ÖZTAŞ**

Şehirleşmenin Marmara Bölgesindeki Yağışlara Etkisi : **Doç. Dr. Mikdat KADIOĞLU**

İstanbul Su Kaynakları ve Büyük Melen Sistemi'nin Değerlendirilmesi : **Prof. Dr. Emin KARAHAN, Murat ALP**

İstanbul Su Temini Sisteminin İşletme Kurallarının Araştırılması : **Dr. İ. KURANYILDIZ, B. ÖNÖZ, B. OĞUZ**

Beykoz Bölgesinde (İstanbul) Yeraltısu Kullanımı ve Çevresel Etkileri : **Yrd. Doç. Dr. Hüseyin ÖZTÜRK, Aysun ÖZTÜRK**

Büyükçekmece Su Havzası'nın Jeolojik-Hidrojeolojik ve Hidrojeokimyasal Özellikleri, İstanbul : **Yrd. Doç. Dr. Yüksel ÖRGÜN**

Küçükçekmece Gölü'nün Su Kalitesi, Kullanılabilirliği ve Kirlenme Nedenleri : **Dr. Rüstem PEHLİVAN, Prof. Dr. Osman YILMAZ**

Küçükçekmece Gölü'nün Saptanan Bazı Çevresel Parametreleri : **Dr. Sayhan TOPÇUOĞLU, Nurdan GÜNGÖR, Çiğdem KIRBAŞOĞLU**

Türkiye'de Su Kullanımı, Atık Suları Geri Kazanma ve Yeniden Kullanma Uygulamaları : **Mustafa KAVAKLI, Zuhale CİVAN**

Sınır Ötesi Bir Çevre Sorunu Olarak Yertüstü Su Kirliliği ve Uluslararası İşbirliğinin Önemi : **Yrd. Doç. Dr. Ömer Faruk NOYAN**

Sferihisar (İzmir) Jeotermal Alanındaki Sıcak Suların Hidrojeokimyasal İncelenmesi : **Prof. Dr. Şevki FİLİZ, Dr. Gültekin TARCAN, Ünsal GEMİCİ**

Yukarı Çürüksü Havzasının (Denizli) Hidrojeokimyasal İncelenmesi : **Dr. Nesrin BARIŞ, Prof. Dr. Şevki FİLİZ, Dr. Gültekin TARCAN**

Balçova Termal Alanı'nın (İzmir) Hidrojeokimyasal İncelenmesi : **Prof. Dr. Şevki FİLİZ, Ünsal GEMİCİ, Dr. Gültekin TARCAN**

Köyceğiz-Dalyan Sucul Ekosisteminin Hidrobiyolojisi, Biyolojik Çeşitlilik Yönünden Önemi ve Korunması : **Prof. Dr. Nilgün KAZANCI, Dr. Muzaffer DÜGEL**

Suyun İnsan Sağlığındaki Önemi ve İçme Sularının Mikrobiyal Kalitesi : **Salih KUŞÇUOĞLU**

Pestisitlerin ve PCB'lerin Biyoakümülyasyonu ve Deniz Ortamında Dağılımları : **Doç. Dr. Oya ZEREN, Kubilay YILMAZ**

Florozis : **Doç. Dr. Ulvi Reha FİDANCI**

İç Sularda Ötrafikasyon : **Prof. Dr. Semra CİRİK, Prof. Dr. Şükran CİRİK**

Bigadiç Zeolitik Tüflerinin Bazı Katyonik İyon Değiştirme Yetenekleri : **Prof. Dr. Yılmaz BÜRKÜT, Dr. Vildan ESENLİ, Ahmet ÇELENLİ**

Aminoasitlerin Doğal Sulardan XAD-2 Reçinesi ile Alınması Üzerine Bir Çalışma : **Mehtap YILDIZ, Bilal ÖZER, Ayla DEMİRCİ, Mustafa ÖZCİMDER**

Kağıt Sektöründe Atık Sular ve Yeniden Kazanılması : **Yrd. Doç. Dr. Özkan CORUK, Ferah KUVEL**

Tekstil Endüstrisinde Arıtma Tesislerindeki Problemler : **Dr. Neşe TÜFEKÇİ, Volkan ARINCI, Fehiman ÇİNER, Suzan UÇAR**

Süt Endüstrisinde Su Kullanımı ve Atık Sularının Arıtılması : **Fehiman ÇİNER, Dr. Neşe TÜFEKÇİ**

Lefke Bölgesindeki (KKTC) Maden Yataklanması ve Yapılmış Olan Madencilik Çevre ve Yüzeysuyunda Yarattığı Sorunlar : **Mehmet NECDET**

Sahil Otellerinden Kaynaklanan Atıksuların Geri Kazanılması Modeli : **Prof. Dr. Kriton CURİ, Doç. Dr. Erol İNELMAN, Prof. Dr. Günay KOCASOY**

İçel Sahil Bandı Belediyeleri Pissu ve Katı Atık Hizmetleri Birliği Kanalizasyon ve Merkezi Arıtma Tesisi Ön Etüd Projesi : **Doç. Dr. Halil KUMBUR, Ali DEMİREL, Emine GÜNDOĞAN, Neslihan DOĞAN**

Marmara Gölü'nün (Manisa) Düzenlenmesi Çalışmaları Üzerine Bazı Görüşler : **Dr. Mustafa GİRGİN**

İkinci Konutların Çevre ve Ekolojik Denge Üzerine Etkisi: Ekolojik Mimari : **Murat Akyaz ERGİNÖZ**

Erzurum'un İçme-Kullanma Suyu Sorunu ve Kente Su Sağlayan Rezervler (Kısa Bir Değerlendirme) : **Prof. Dr. Hayati DOĞANAY**

Tercan Ovasında (Erzincan) Başlıca Hidrografik Sorunlar : **Yrd. Doç. Dr. Hakkı YAZICI**

Sivas Belediyesi Mücavir Alanı arazi Kullanım Potansiyeli ve Su Havzalarının Korunması İçin Öngörülen Tedbirler: **Necmettin AVI, İ. Fikri CADOĞLU, M. Emrah AYAZ**

Amasya Şehri Yeşilirmak Kirliliği : **Seher TEKİN, Sevilay TOZAKÇI**

Yeraltısuyu Havzalarının Korunması, İzmit Havzası Örneği : **Yrd. Doç. Dr. Özkan CORUK, Cihangir ÖZER, Ertan MERT**

Kirmir Çayı'nın Su Kalitesi Üzerine Bir Araştırma : **Dr. Sönmez GİRGİN, Prof. Dr. Nilgün KAZANCI**

Ceyhan Nehri Suları ve Asılı Katıların Ağır-Metal İçeriği ve Kullanım Etkileri : **Dilek YILMAZER, Prof. Dr. Servet YAMAN**

Kelkit-Yeşilirmak Kavuşum Bölgesinde (Erbaa Yöresi) Yatak Değişiminin Bazı Önemli Sonuçları : **Dr. İhsan BULUT**

Enerji Amaçlı Barajların Matematiksel Programlama Yöntemleri ile Optimizasyonu : **Dr. Recep YURTAL**

Kuyulardan Alınabilecek Optimum Debinin Hesaplanmasında Genetik Algoritma Yaklaşımı : **Dr. Ahmet BAYLAR, Dr. Nihat KAYA, Doç. Dr. Abdüssamet ARSLAN**

Kuyularda Su toplama Alanları ve Kirlenme Süreleri : **Orhan DUMLU, Erkan BOZKURTOĞLU**

Katı Atık Depolama Alanlarının Hidrojeolojik Açısından Değerlendirilmesi : **Yrd. Doç. Dr. Şaziye ABACI**

Doymuş-Doymamış Bölgede İki Boyutlu Boron Taşınımı İçin Nümerik Model : **Yrd. Doç. Dr. Gökmen TAYFUR, Prof. Dr. Kenneth K. TANYİ**

Jeoteknik Çalışmalarda Suyun Önemi : **Doç. Dr. İlyas YILMAZER**

Basınçlı Akiferlerin Zemin Stabilitesine Etkisi : **Dr. H. Murat ÖZLER**

Zemin Suyu Etkisinde Kaplama Taşı Olarak Mermer Karakteristiği-Kalite Belirleme Analizi : **Doç. Dr. Lütfullah GÜNDÜZ, Ali SARIŞIK**

Mermer Türlerinin Kapilerite Özellikleri : **Ali SARIŞIK, Doç. Dr. Lütfullah GÜNDÜZ**

Konutlarda Kullanılan Kaplama Taşlarının Kimyasal Solüsyonlu Maddeler ile Su Yalıtımının Sağlanması : **Doç. Dr. Ahmet ŞENTÜRK, Doç. Dr. Lütfullah GÜNDÜZ, Canpolat ÇETİN**

Yüzey Akış Suyu Kazanım Teknikleri : **Yrd. Doç. Dr. Harun KÖKSAL**

Kar Yağışının Havza Su Potansiyeline Etkisi : **Ömer Murat YAVAŞ**

Su Üretim Havzalarında Doğal Bitki Örtüsünün Fonksiyonları ve Havza Bazında Arazi Kullanımının Planlanması : **Prof. Dr. Kamil ŞENGÖNÜL**

Devlet Sulama Şekelerinde Su Kullanım Etkinliği : **Doç. Dr. Mevlüt BEYRİBEY, Prof. Dr. İrfan GİRGİN, Prof. Dr. Ali BALABAN**

Atatürk Baraj Gölü Havzasındaki Tarımsal Arazi Potansiyeli ve Sulamayla Birlikte Ortaya Çıkabilecek Tarımsal Kirlilik : **Dr. Reşit GERGER, M. İrfan YEŞİLÇINAR, Mustafa S. YAZGAN**

Su Kirliliğinin Tarla Tarımı Açısından Değerlendirilmesi :
Ufuk KARADAVUT, Okan ŞENER,
Hüseyin GÖZÜBENLİ

Tarım Alanlarında Kullanılan Pestisitlerin Çevresel Etkileri ve
Alınması Gereken Önlemler : Fehiman ÇİNER

Türkiye'de Sulak alanların Önemi ve Sorunları :
Sezgin ÖZDEN

GEOENV'97

Uluslararası GEOENV'97 JEOLJİ VE ÇEVRE Sempozyumu 1-5-9 1997 tarihleri arasında büyük bir katılımı gerçekleştirildi. JMMOBJeoloji Mühendisleri Odası tarafından gerçekleştirilen Sempozyum süresince bildiri ve poster olmak üzere topluma 212 sunum yapılmıştır. 212 bildiriye ait abstracları başlık ve yazıları aşağıda verilmiştir.

CONTENTS

Thegeology of fossil fuels and renewable enegy resources in the twenty first century : R. L. BRENNER

Coral reef in the persian gulf-consequences of the gulf war investigated with underwater video recordings : H. P. VOGT

Geochemical assesment of environmental effects of fly-ash from seyitömer (Kütahya) power plant : B. ÇANCI, N. GÜLEÇ, A. ERLER

Retrofitting leachate collection systems for existng sanitary landfills as contrasted to newly-constructed sanitary landfills : T. R. WEST

Acid drainage and other environmental impacts associate with sulfide-bearing rocks : D. W. BYERLY

Effect of fault zone on the stability of the Istanbul subway : S. DALGIÇ, H. KORAL, S. BİBEROĞLU

Active tectonics in far west texas, usa : N. R. TILFORD

Land degradation in dissected tertiary sediments as a result of tree clearing : P. DAHLHAUS, R. Mac EWAN

Desing and operation of nitrifying filters : M. SARIOĞLU

Long-Term and Short-Term shoreline changes along the zam-bales coast: Controls of shoreline change and the impact of the 1991 MT. pinatubo eruption : F. P. SIRINGAN, C.L. RINGOR

Biostratigraphy, correlation and paleoenvironment of principal reservoir units within the productive series of eastern azerbaijan and south caspian basin : M. D. MAMEDOVA

KASIM 1997



Flooding in the massawippi drainage basin, southern quebec, Canada : N. K. JONES

The study on economical storing of petroleum and natural gas inside salt demes in Turkey : G. TUNCER, A. KESİMAL

Lineaments and their control over nilgiri landslides, india : S. FRANCIS, R. NEELAKANTAN, S. M. RAMASAMY

Petrographic and petrophysical analyses in study of sedimentary rock diagenesis : A. MALISZEWSKA, P. SUCH

Evaluation of ground subsidence in sarir area, Libya : N. SABTİ, S. RASHRNAH

Preliminary economic feasibility of diatomite occurrence, sabkhat ghuzayil, middle-northern Libya : A. M. EIDERNEWI, S. M. ÇAĞMAN

Petrophysical characteristics of late eocene tuffs of northern thrace basin, Tekirdağ, Turkey : M. ÖZKANLI, N. SONEL, A. U. DOĞAN

Formation mechanism of opal at pillow lava contact, Ayaş, Ankara Turkey : A.U. DOĞAN, M. DOĞAN

Changes of the secchia river channel during the last hundred years near sassouolo (Modena-Italy) : **U. BONAZZI**

Regional changes in climate, seismicity and water level of Van, urumiye, caspian (Hazar) lakes and their impacts on the coastal zone : **M. S. BAYRAKTUTAN, C. FERHOUD, A. KADIROV, R. MAMMEDOV**

Chronological development of Seyhan and Ceyhan deltas and their effects on the shoreline changes : **K. GÜRBÜZ**

Environmental geochemistry and pollution studies of metal industry district (Aliağa-Izmir-Turkey) : **N. KARAOĞLU, D. SPONZA**

Palynological data and paleoclimatic conditions of the cretaceous period in the south-east of the greater caucasus : **V.G. SHAKHBAZOVA**

Cost-effective joint dc resistivity and tem investigations of old landfill sites in urban areas : **M. A. MEJU**

Interpretation of induced polarization (Time-Domain) anomalies under complicated environments : **B. E. KHESIN, V. V. ALEXEYEV, L. V. EPPELBAUM**

Joint application of the pmr and tdm methods in ground water exploration : **M. GOLDMAN, A. LEGCHENKO, A. BEAUCE, P. VALLA, E. FLEISHER, M. EZERSKY**

Application of seismic methods in environmental-geophysical exploration : **S. STANIC, S. KOMATINA**

Applications of geophysics techniques in environmental problem solving of field of sadabad (Kağıthane-Istanbul) : **F. A. YÜKSEL, F. ÇAKAN, M. ÖZDEMİR**

Environmental protection in seismic areas: Impact of earthquakes induced effects : **Y. BOUHADAD**

Educating environmental geochemists for the 21st century : **A. I. KILINÇ, W.A. PRYOR, J. B. MAYNARD**

Distribution and ecological reassessment of minor and trace elements in abu tartur black shales and intercalated phosphorite deposits (western desert, egypt) : **A. K. ATTIA, M. E. HILMY, S. N. BOULIS, H. A. AHMED**

Leachate hydrogeochemistry at Gölbaşı municipal waste disposal area, Ankara-Turkey : **F. CANPOLAT, M. Z. ÇAMUR, H. YAZICIGİL**

Barriers systems for waste disposal sites mineralogical, geochemical and isotopic constraints for fluid-rock interactions : **H. TAUBALD, M. SATIR**

Water pollution from the lahanos mine (Espiye-Giresun, ne Turkey) : Implications on its effects on the water supply of the town of espiye : **N. TÜYSÜZ, M. AKÇAY, M. TÜFEKÇİ**

Soil and water pollution from the acid rains and mine drainage around the murgul copper deposit, ne Turkey : **M. AKÇAY, N. TÜYSÜZ, M. TÜFEKÇİ**

Geochemistry of volcanic gas-environmental interactions from la fossa crater, vulcano island (Sicily, Italy) : **M. VOLTAGGIO, L. ROMOLÌ**

Distribution of selenium in different soil profiles in the velenca hill, hungary : **E. BEREZ-HORVATH, G. PANTO, Z. WIESZT**

Multivariate techniques applied on a comparative basis to environmental assessment related mine wastes, portugal : **P. PREIRE AVILA, M. SANTOS OLIVEIRA**

Mass-Balance calculations for the Ömer-Gecek thermal waters, Afyon area, Turkey : **H. MUTLU, N. GÜLEÇ**

Hydrogeochemical and isotope geochemical features of the thermal waters of Kızıldere, Salavatlı and Germencik in the rift zone of Büyük Menderes, western Anatolia, Turkey : **N. ÖZGÜR, A. PEKDEĞER, M. WOLF**

Geochemical characteristics and re-injection of the Kızıldere-Tekke Hamam geothermal fluids : **N. YILDIRIM, Z. DEMİREL, A. U. DOĞAN**

Listwaenites from central east Anatolia: Explanatory models for its formation, and precious metal concentrations : **A. UÇURUM, L. T. LARSON**

Partial melting modeling of the magma source of the Yıldızdağ gabbroic pluton, Yıldızeli-Sivas region, Central Anatolia, Turkey : **D. BOZTUĞ, S. TATAR, N. OTLU**

Effect of moisture content on cbr of gypsiferous subgrade soils: **A. MEMON**

234U/238U and 87Sr/86Sr applications to the hydrogeology of sangemini area (Terni-central Italy) : **M. BARBIERI, M. VOLTAGGIO**

Physical-chemical modeling of Sb-behaviour at the tailings impoundment of konsomolsky gold-recovery plant : **O. L. GASKOVA, E. P. BORTNIKOVA, M. V. PASHKOV**

Triple relations of the granitoid enclaves and gabbro of the Ağaçören intrusive suite (central Anatolia-Turkey): Geological, petrographic and geochemical constraints : **Y. K. KADIOĞLU, N. GÜLEÇ**

Usage of pumice for dichlorvos removal : **A. N. ONAR, N. BALKAYA**

Thermal and mineralized waters of Kızılcahamam, Ankara, Turkey : **S. PASVANOĞLU, B. CANIK, A. Ü. DOĞAN**

Application of geochemical and isotopic analysis methods ($^{87}\text{Sr}/^{86}\text{Sr}$) in hydrogeological characterization of some springs in simbruini mountains : **G. SAPPA, M. BARBIERI**

A new type of hydrothermal alteration in the geothermal field of Kızıldere in the rift zone of the Büyük Menderes, western Anatolia, Turkey : **M. VOGEL, N. ÖZGÜR, A. PEKDEĞER**

Investigations on the kinetics of sulphide weathering in lignite opencast dumps : **N. SELLSCHOPP, H. FELDMANN**

The nature of laminated underlayered rock salts at verkhnekamskoye deposits : **A. I. KONDRYASHOV, N. MOROSHKINA**

Influence of geology and mining activities on pollution of the kaue river in zambia : **R. PANDIAN**

An update on the coastline changes and evolution of the Seyhan and Ceyhan deltas in the northeast mediterranean, Turkey: **Y. BAL, H. ÇETİN, C. DEMİRKOL**

Evaluation of the digital spectral data by landsat satellite for estimating and mapping water quality parameters in the parkdam lake, Eskişehir-Turkey : **F. BİLGE, T. DÖĞEROĞLU, C. AYDAY**

Recent changes in the surface cover and their environmental consequences in some pilot areas in kuwait : **D. AL-AJMI, R. MISAK, A. M. AL**

A case of study using remote sensing and gis techniques after Dinar (Western Turkey) earthquake : **M. NURLU, V. ÖZSARAÇ, B. ÖZMEN**

The prospects of creating an autonomous monitoring system of kamchatkas volcanic lakes : **S. V. USHAKOV**

Law, land use policy and land degradation in southern greece (Messoghia plain) : **F. PAPADIMITRIOU**

Gis applications for land hazard zonation (lhz) in kedarnath okhimath region, main central thrust zone, gigher garhwal himalayas, india : **A. SAHAI, I. C. DAS**

Effects of the kısıklı tunnel excavation on environment: **S. DALGIÇ**

Landslides and environment : **V. VUJANIC, V. VLADIKOVIC**

Problem soil investigation for a highway construction in northern Greece : **G. S. XEIDAKIS, E. G. VARAGOULI, P. D. KOUDOUMAKIS**

Rehabilitation of golden horn and geoenvironmental concerns: **K. ÖZAYDIN, M. YILDIRIM**

Why the water-discontinuity-clay (wdc) trinity has to be highlighted in geotechnical investigations : **T. ÇAN, T. Y. DUMAN, İ. YILMAZER**

Intelligent decision support systems (IDSS) for geotechnical purposes: Environmental models : **Ş. ÖZMUTLU**

Engineering geological and hydrogeological problems encountered at the ermenek dam and hepp project area : **S. ÖNÇ**

Identification of aquifer transmissivities: Comparison of ground water modeling approaches : **Y. N. FARMAN**

Parameters for the appraisal of influence exerted by linear structures and waste dumps on underground waters : **V. VUJANIC, J. JOSIPOVIC, L. ROKIC, M. JOTIC**

Physico-mechanical properties of hardgrounds from Ankara, Turkey : **A. U. DOĞAN, A. ÖZSAN, C. KARPUZ**

Engineering geological assessment of an organized industrial district to be located in a terrain of flysch: A case study from western black sea region, Turkey : **T. Y. DUMAN, İ. ÇAN, İ. YILMAZER, Ö. EMRE**

A wide enough construction platform and new aquifer created by artificial dikes in a barren and highly dissected valley : **L. AKDUMAN, Y. LEVENTELİ, İ. YILMAZER**

Petrographical and geomechanical characteristics of weathered granitic rocks in Çavuşbaşı, northwestern Turkey : **E. AREL, A. TUĞRUL**

The influence of mineralogical textural characteristics on the durability of selected sandstone in Istanbul, Turkey : **A. TUĞRUL, I. H. ZARİF**

Slope stability in "Istanbul green clay" and effects to urbanization : **Ö. ÇORUK**

Engineering geological setting of some major cities of Greece: **P. MARINOS, G. KOUKIS, G. TSIAMBAOS, N. SABATAKAKIS**

Via egnatia: The first highway to unify the Balkan peoples : **G. S. XEIDAKIS, E. G. VARAGOULI**

Estimation of the mechanical behaviour of soils for urban planning, using in-situ ultrasonic velocity techniques : **H. LEMONI, B. CHRISTARAS**

Natural monuments in the plain between Osmaniye and Yumurtalık, southern Turkey : **N. PELEN, S. TÜRKMEN, Ş. ABACI**

An analysis of relationships between urban geology and environmental planning and proposals for future development the case study of ercise mountain volcanic area, Kayseri Sub-region : **M. SOMUNCU, K. ÇAMUR, N. KARADENİZ, N. AKPINAR**

Transport, transformation, and retention of anthropogenic harmful substances in urban areas-the city of karlsruhe as an example : **D. STÜBEN, M. MEURER, K. HUCK, S. NORRA**

Geological investigations for the remediation of an old coal mining site for housing development purposes : **H. T. DURGUNOĞLU, K. ORUÇ, T. KARADAYILAR, C. G. OLGUN**

Recognition of distinct morphologies and its significance on site selection study : **İ. YILMAZER, Y. LEVENTLİ, L. AKDUMAN**

How to locate a housing estate and the similar structures over stratified and tildet units: A case study from Turkey : **M. GÜRLER, Ö. YILMAZER**

Site-Selection study based on the unified alteration index (UAI) and on analysis of discontinuities : **R. KILIÇ**

Hydrogeological base in the planning of urban and appropriate protection measures : **M. KOMATINA, S. KOMATINA**

Geological exploration using natural (TL) thermoluminescence of quartz and zircon at the otake-hatchob aru geothermal field in Japan : **M. HAYASHI**

Aquifer thermal energy storage in Turkey : **Ş. ABACI, H. Ö. PAKSOY, H. EVLİYA**

Duct thermal energy storage in warm and cold climate : **S. GEHLIN, H. Ö. PAKSOY**

Exploitation of methane-containing thermomineral waters of vojvodina : **D. STOJILJKOVIĆ, G. SEKULARAC, B. KRESOVIC**

Geochemical characteristics and environmental significance of some basin lignites, Turkey : **C. A. PALMER, E. TUNCALI, R. B. FINKELMAN**

Environmental impacts and the capacity of geothermal resources in eastern Turkey : **M. S. BAYRAKTUTAN**

Mineralogical evaluation of Beypazarı oil shale, Ankara, Turkey : **İ. ŞENGÜLER, A. U. DOĞAN, M. ŞENER**

An example for the optimal use of geothermal energy-the integrated development project for Kula/west Anatolia : **M. Y. SAVAŞÇIN, A. PEKDEĞER, O. KAYA, H. WOITH, M. ERGÜN**

The purpose and applications of the re-injection studies in Kızıldere geothermal field, Denizli-Turkey : **Z. DEMİREL, Ö. ÖLMEZ, N. ŞENTÜRK**

Characterization and assessment of under water disposal of fresh sulfidic tailings from the Louvicourt Mine, Quebec, Canada : **A. D. PAKTUNÇ, M. BLANCHETIE, J. WILSON**

Mining-related pollution: When is a contaminated site not a contaminated site : **S. MC GINNESS, P. H. WHITBREAD-ABRUTAT, P. MITCHELL, K. ATKINSON**

Environment Canada's approach to and prediction : **B. GODIN**

Preventing acid drainage in a Mine waste rock, a statistical interpretation of column weathering data : **E. K. YANFUL, M. P. ORLANDEA, M. ELIASZIW**

Characterization of hydrogeochemical baselines and metal Mine drainage for site remediation and prevention at west Mine resources' myra falls Cu-Zn operations, Vancouver Island, British Columbia : **G. C. PHIPPS, D.R. BOYLE, I. D. CLARK**

Geochemical controls on arsenic levels in some pit lakes and groundwaters associated with mining : **D. LANGMUIR, J. J. MAHONEY**

The scales of the chemical weathering of storage tailings : **S. B. BORTNIKOVA, N. V. SIDENKO, E. V. LAZAREVA**

Environmental restoration of uranium mining tailing ponds in Hungary : **P. SZERBIN, L. JUHASZ, Z. LENDVAI, M. CSOVARI, I. BENKOVICS**

Some environmental geochemical aspects of solid wastes from copper and mercury mines in the Philippines : **J. P. DUYANEN, G. D. GONZALES**

The assessment of contaminated disused colliery sites in County Durham, England : **S. C. F. Mc. CLURE, R. A. FORHT, D. BEAHMONT**

Simultaneous mining of clay and lignite environmental and economical aspects : **H. G. FIEDERLING-KAPTEINAT**

Evaluation of measurements of ground vibration produced from blasting a quarry located near Istanbul in Turkey :
A. KAHRAMAN, A. MISIRLIOĞLU, C. S. DOLU

Solid mineral wastes in Bulgaria: Types, quality and quantity:
T. TODOROV

The integrity of non-carbonate and carbonate-rich slurry wall backfills exposed to acid rock drainage : **E. K. YANFUL, M. A. KASHIR**

An approach to meet the gap between urban recreational demand and supply by the reclamation of derelict brickyards as a wetland: Imrahor-Ankara brickyards-case study :
N. AKPINAR, N. KARADENİZ, K. ÇAMUR, M. SOMUNCU

Genesis and characterisation of marmor misium from Kozak (Turkey), a granite used in antiquity : **G. DE VECCHI, L. LAZZARINI, T. LÜNEL, A. MIGNUCCI, D. VISONA**

Petrophysical approach in stone conservation studies :
M. MONTOTO

Biodeterioration of monumental rocks: Decay mechanisms and control methods : **P. TIANO**

Problems of stone preservation on historical monuments in Germany-a review of the methods and materials in use :
E. WENDLER

Decay and treatment of granitic rocks : **J. D. RODRIGUES**

The conservation of cappadocian rock-hewn churches: The role of ICCROM and other intergovernmental organisations :
M. L. TABASSO

Deterioration of the natural and historical monuments in Cappadocia (Turkey) : **A. BABA, İ. YILMAZER**

Accelerated weathering in Cappadocian tuff : **T. TOPAL**

Preservation of geological remains: A philosophical approach to the foundations : **A. SOL, H. ÜNDER**

Geomechanical factors causing damage to monuments, experience from northern Greece : **B. CHRİSTARAS**

Stone as building material in Lombardy (Italy) geology, quarries, use, decay : **L. FOLLI, R. BUGINI**

The weathering of historical monuments exposed to urban and rural environments in Korea : **H. D. PARK, H. Y. LEE**

Characterization of ancient building materials and historical artistic facies for the Rapolla cathedral (Basilicata, Italy) :
A. CAPRA, L. CINQUEGANA, DIVITIS, A. PELLETTIRE, M. RD. POTENZA

Geoconservation in Albania : **A. SERJANI**

The protection of the geological environment of the Fruska Gora natural park : **M. VASIC, L. PETER, M. PETRICEVIC**

Contribution of sedimentology to environmental studies :
V. PETRIDOU-NAZOU

Conservation relevant problems about rock-hewn churches and settlements in Meskendir valley (Cappadocia, Turkey) :
E. BURRI, R. MASSOLI-NOVELLI, M. PETTITA

Geological Heritage conservation in Bulgaria: State of art :
T. TODOROV

Ancient stones used in the Neapolitan architecture :
L. CINQUEGRANA, DIVITIS, FOLLI

The conservation of stone material by impregnation case studies of Milan buildings (Italy) : **G. ALESSANDRINI**

Cultural aspects of conservation of geological and historical heritage : **P. PAPADIMITRIOU, H. LAONTARIDI**

Biologically supported water covers to prevent acid generation in tailings ponds : **N. KUYUCAK**

Techniques for establishing aquatic vegetation in permanently flooded tailings-a field test : **P. BECKETT**

So many problems; so few resources: Developing a management system for solving environmental problems :
P. O. CHAMBERLAIN, P.G. CHAMBERLAIN, A.P. EGER

Coal desulphurization by flotation of bacterially conditioned coal : **M. Z. DOĞAN, G. ÖZBOYOĞLU**

Gold recovery by the use of *Kluyveromyces marxianus* :
G. ÖZCENGİZ, G. ALEDDİNOĞLU, A. YAZGAN, M. Z. DOĞAN

Metal enrichments in water and stream sediments, originating from the copper mining works of Maden, Elazığ and their reflections in biogeochemistry : **Z. ÖZDEMİR, A.SAĞIROĞLU, Y. ÖZDEMİR**

Micro-structure and possible micro-biologic effects of recent Sıcakçermik travertines of Sivas, Turkey : **E. TEKİN, A. U. DOĞAN, B. VAROL, C. TURAN, P. TÜRKER**

Biosorption of heavy metal ions by immobilised dead fungal biomass : **R. İLERİ, H. ÜÇPİRTİ**

Impacts of air pollution on public health : **G. KOCASOY**

- Traffic emissions in Turkey : **E. EKİNCİ, M. TIRIS**
- Air pollution in Turkey a spectrum of case studies : **S. KARA, T. DÖGEROĞLU, M. BANAR, S. ARITÜRK, A. ÇİÇEK**
- Activation of calcium hydroxide by hydrotion with different siliceous materials : **A. ERSOY (MERİÇBOYU)**
- Newenergy conversion technologies for minimizing air pollution and sorbents developed for absorption of hydr ogen sulfide : **A. ATIMAY, C. DERİNÖZ**
- A comparison on the flue gas desulphurization processes : **N. KARATEPE**
- Risk potential of rivers for groundwater : **H. HOETZL, B. REİCHER**
- Hevay metal load and chemical profile of Ceyhan river, Adana, Turkey : **D. YILMAZER, S. YAMAN**
- Aspects regarding the quality of some surface water usel like supplies for drinking water : **C. COSMA, M. NICOLAU, A. BALLO, NITOI**
- River remediation in desert regions using diversion structures and retention basins : **D. J. GREEN, N. R. TILFORD**
- Influence of mining activity on the Sediments of an artificial lake system in southern sardinia : **S. FADDA, M. FIORI, M. S. GRILLO, A. MARCELLO, S. PRETTI**
- Geologic factor as source contamination of surface waters : **M. PERISIC, S. TIMOTUJEVIC**
- Heavy metals in the water vegetation in the mining regions : **S. B. BORTNIKOVA, E. I. HIZHINA**
- Water quality, utilization and pollution reasons of Küçük Çekmece lake, İstanbul : **R. PEHLİVAN, O. YILMAZ**
- Environnemental study of the monastir-khniss littoral (eastern tunisia): Analysis of the organic matter in the surface sediments : **R. SASSI, F. SOUISSI, S. ABDELJAOUED, H. BELAYOUNI**
- Lead isotopes radionuclides in the river elbe, germany and czech republik : **E. ECKERT, M. SATIR**
- Assesment of groundwater pollution by contaminated waste water from an open pit mining lake : **G. STRAUCH, B. ECCARIUS, P. KOUWSKY, R. TRETTIN, U. STOTTMEISTER, G. MARTIUS**
- The influence of lignite on the transport of contaminants in the ground water aquifer system of the bitterfeld region : **J. DEMIETZEL, P. KOWSKI, D. LAZIK, W. GLABER**
- Hydrogeological and hydrogeochemical investigations on arsenic damage to ground water system of quartuer haveleck of Berlin, germany : **C. SOMMER, V. J. ARMERSTED, A. PEKDEĞER, N. ÖZGÜR**
- Improvement of a ground water vulnerability assessment method through uncertainty and contamination risk indexes : **M. CREMONINI, F. PITTALUGA, R. PEDONE, P. LOMBARDI**
- Conditional simulation approach to assesment of ground water contamination: A case study : **A. E. TERCAN, C. SARAC**
- Investigation of a rn/th contaminationin a shallow aquifer-a case study : **A. WINKLER, U. MAIWALD**
- Hydrogeological investigation of Antalya basin concerning the future domestic water needs of Antalya city (Turkey) : **R. KARAGÜZEL, R. SCHOLZ, B. EBEL**
- Influence of water gate "kajtasovi" to ground water regime : **D. STOJILJKOVIC, E. NIKOLIC-DORIC, G. SEKULARAC**
- Ground water pollutionin Samsun : **N. BALKAYA, A. KULEYİN, F. ÖZTÜRK, K. SARICAOĞLU, O. ÖZDEMİR H. BÜYÜKGÜNGÖR, A. N. ONAR**
- Exploitation of methani-containing thermomineral waters of vojvodina : **D. STOJILJKOVIC, G. SEKULARAC, M. RAJIC**
- Aquifer vulnerability and ground water quality in Adana plain, Turkey : **Ş. ABACI**
- Water quality management for the citizens of Islamabad and rawalpindi : **R. J. CHAUNAN, M. T. RAFIQUE**
- Physicochemical, hydrochemical and biochemical studies for surface ground water contamination in industrial area, Islamabad : **M. T. RAFIQUE, R. J. CHAUNAN**
- Anintegrated environmental control system for identification and evaluation of environmental impacts : **R. J. CHAUNAN, M. T. RAFIQUE**
- A pollution study for the groundwater used for drinking in the Samsun region : **S. YÜKSEL, M. T. NALBANTÇILAR, A. N. ONAR, N. BAYKARA**
- Mass killing at the kit boundary, Nallıhan, Ankara, Turkey : **A. U. DOĞAN, V. TOKER, M. DOĞAN**
- Factors affecting the distribution and occurrences of heavy metals in the bottom sediments of manila bay, Philippines : **J. P. DUANEN, G. GONZALES**

The effects of the land-based pollutants on the pollution of the Black Sea, Turkey : **Y. ORHAN, G. BAKAN, N. KADER, E. DOĞANGÜN, H. BÜYÜKGÜNGÜR**

Trace element pollution of surface sediments in Haifa bay, Israel : **J. PENCİNER, I. MODNENCO, J. KRONFELT**

Response of benthic foraminifera to pollution by heavy metals in the eastern Mediterranean : **V. YANKO, N. AVŞAR**

Water pollution according to vertical and horizontal distribution of recent ostracoda association in the sea of Marmara, NW Turkey : **C. TUNOĞLU**

Distribution of selected heavy minerals and metals of placer beach deposits, Çarşamba plain, Samsun, Turkey : **M. DOĞAN, A. U. DOĞAN, B. ŞAHİN, S. KAYAKIRAN**

Application of a simple lung function device in field studies of older persons : **R. WALLACE, K. SWALLEN, N. SPRINCE, C. ZWERLING**

Endemic pleural calcification due to tremolite asbestos in Edirne, Turkey : **S. EMRİ, A. U. DOĞAN, E. TABAKOĞLU, M. DOĞAN, İ. ÇAĞLAR, F. ÖNER, Y. KARAKOCA, İ. BARIŞ**

Mineral dust related diseases in the vicinity of Çankırı, Turkey : **M. DOĞAN, A. U. DOĞAN, S. EMRİ, İ. BARIŞ**

Coal quality and public health : **R. B. FINKELMAN, C. A. PALMER**

Investigation of volcanoclastic sediments and drinking waters around of Doğanbey (Konya, Turkey) about public health : **M. ÇELİK, N. KARAKAYA, M. T. NALBANTÇILAR**

Iodine geochemistry and urinary iodine levels in endemic region in ne Turkey and its relations to magmatic arc environment : **S. TOKEL**

Hydrogeological concepts in water resources protection practice and regulations in Turkey : **G. GÜNAY, M. EKMEKÇİ**

Environmental considerations in the Hawaii water code : **R. H. COX**

Water pollution according to vertical and horizontal distribution of recent ostracoda association in the sea of Marmara, NW Turkey environmental planning and community participation-an Australian case study : **R. Mac EWAN, P. DAHLHAUS**

Law, land use policy and land degradation in southern Greece (Messoghia plain) : **F. PAPANIMITRIOU**

Asce standards for water-related policies, laws, and regulations : **S. E. DRAPER, A. I. JOHNSON**

Regional groundwater hydrogeochemical surveys: Applications to land use planning and health risk assessments : **D. R. BÖYLE**

Mixing of Danube water and shallow groundwater in the bank filtered wells of Budapest : **I. FORIZS, J. DEAK**

Evaluation of groundwater flow systems in the Duna, Tisza interfluvial area, Hungary : **B. ANGELUS, J. TOTH, J. M. SZÖNLY, A. ARDAY, L. ADAM**

Mineralogical, geochemical analysis of Sapanca lake bottom sediments and its effects on water quality : **O. ERTÜRK, O. YILMAZ**

Protection of mineral and water resources in Poland - a Ph.D. thesis supported postgraduate course at Agir Krakow : **A. PAULO, B. STRZELSKA-SMAKOWSKA**

Investigation of ancient waste disposal sites - a hydrogeological and hydrochemical approach : **O. KISSLING, W. BALDERER, P. JORDAN**

Causes and effects of decreasing groundwater level in İzmit basin and protection methods : **Ö. CORUK, C. ÖZER, E. MERT**

Different groundwater vulnerability assessment methods applied for the Transdanubian Central Range, Hungary : **G. HALUPKA, J. MADI-SZÖNYI, L. FÜLE**

PCE contaminated groundwater: Use of simulation to estimate human exposure : **M. L. MASLIA, M. M. ARAL**

Use of groundwater modeling and GIS to determine population exposure to TCE at the Tucson International Airport : **S. E. RODENBECK, M. L. MASLIA**

Modeling natural attenuation of selected explosive chemicals at a DOE site : **M. ZAKIKHANI**

In-situ cleanup of petroleum contaminated soil and groundwater using alcohol flooding : **D. G. GRUBB, N. R. DAVIES**

Pump and treat system design using genetic algorithms with locations of wells selected as decision variables : **M. M. ARAL, J. GUAN**

Modeling and simulation of environmental change in Mediterranean landscape : **F. PAPANIMITRIOU**

Simulation tool for estimating human exposure to the analytical contaminant transport system (ACTS) software : **M. M. ARAL, M. L. MASLIA**

Chemical element behavior in soil, micro-organisms and different parts of plants in polluted and background zones :

I. V. SHTANGEEVA

Microscopic chemical imaging of contaminant adsorption of mineral surfaces : **G. S. GROENEWOLD, J. C. INGRAM, J. E. OLSON, A. K. GIANOTTO**

Chemical effects of biofilm colonization on stainless steel surfaces : **R. AVCI, J. PENDYALA**

The use of surface science techniques in studying interactions of exopolymers produced by sulphate-reducing bacteria with iron : **I. B. BEECH, V. ZINKEVICH, R. TAPPER, R. GUBNER, R. AVCI**

Electrochemical effects of microbial colonization of metal surfaces : **Z. LEWANDOWSKI, E. ROE, W. DICSINSON, B. OLESEN, R. AVCI**

Detection on pitting corrosion of metals in aqueous solutions by 3-D optical interferometry : **K. HABIB**

TÜRKİYE 11. KÖMÜR KONGRESİ (1998)

10-12 Haziran 1998 tarihleri arasında Bartın-Amasra'da yapılacak olan kongrede, TMMOB Maden Mühendisleri Odası Zonguldak Şubesi tarafından düzenlenecektir.
Kongrede İşlenecek Konular

1. Kömür Madenciliğinde Ekonomik Politikalar ve Sosyal Sorunlar

- Kömür madenciliğinde gelişmeler
- Enerji, demir-çelik vb. sektörler açısından üretim-tüketim politikaları
- Teknoloji transferi ve etkileri
- Kapatılan/özelleştirilen sahalarda sosyal sorunlar
- Eğitim ve istihdam sorunları

2. Kömür Madenciliğinin Bilim ve Teknolojisi

- Arama ve Değerlendirme
- Araştırma-Geliştirme çalışmaları
- Teknolojik gelişmeler
- Kömür işletmelerinin özel sorunları ve çözümleri
- Ürün çeşitlendirme (koklaşırma, briketleme vb.)

3. İş Güvenliği ve İşçi Sağlığı


- Gaz, toz, gürültü, yangın
- İş kazaları ve meslek hastalıkları

4. Çevre Sorunları


TÜRKİYE 11. KÖMÜR KONGRESİ
THE ELEVENTH COAL CONGRESS OF TURKEY

10-12 Haziran 1998
10-12 June 1998

BİRİNCİ DUYURU
First Announcement



BARTIN-AMASRA / TÜRKİYE



TMMOB
MADEN MÜHENDİSLERİ ODASI
ZONGULDAK ŞUBESİ

Zonguldak Branch of the Chamber
of Mining Engineers

51. TÜRKİYE JEOLJİ KURULTAYI (1998)

51. Türkiye Jeoloji Kurultayı 16-20 Şubat 1998 tarihleri arasında Orta Doğu Teknik Üniversitesi Kültür ve Kongre Merkezi'nde yapılacaktır. TMMOB Jeoloji Mühendisleri Odası tarafından düzenlenecek olan kurultayda işlenecek olan konular:

1. Genel Jeoloji

Stratigrafi-Paleontoloji, Sedimentoloji, Tektonik Mineroloji, Petrografi, Jeokimya, Jeostatistik

2. Metalik Madenler

Demir, Manganez, Bakır, Kurşun, Çinko, Krom, Nikel

3. Endüstriyel Hammaddeler

İnşaat Sanayi Hammaddeleri, Refrakter Sanayi Hammaddeleri, Seramik Sanayi Hammaddeleri, Kimya Sanayi Hammaddeleri

4. Enerji Hammaddeleri

Petrol ve Doğalgaz, Jeotermal Enerji, Kömür, Radyoaktif Mineraller



5. Mühendislik Jeolojisi-Jeoteknik Etüt ve Uygulamalar

Baraj ve Gölet Yerleri, Tünel, Yol, Köprü Ayakları, Liman, Rıhtım, Dalgakıran, Barınak Yerleri, Kaya ve Zemin Mekaniği

6. Hidrojeoloji

Karst Jeolojisi ve Hidrojeolojisi, Yeraltısu Araştırma ve İşletmesi, Kuyu Hidrolojisi, Yeraltısu Kirliliği

7. Doğal Afetler, Kentleşme ve Çevre Jeolojisi

İmar Planına Esas Jeoloji Hizmetleri, Yerleşim Alanlarının Depremselliliği, Yerleşim Alanlarının Belirlenmesinde Çevre Jeolojisi, Çevre Sağlığı ve Jeoloji, Doğal Anıtlar

8. Kıyı ve Deniz Jeolojisi

9. Maden, Petrol ve İnşaat Sektöründe Sondajcılık

Maden Arama Sondajları, Temel Sondajları, Enjeksiyon Uygulamaları, Petrol ve Doğalgaz Kaynaklarının Aranmasında Sondajcılık Çalışmaları

KASIM 1997

10. Doğal Kaynakların Aranması ve Değerlendirilmesi

Arama, Yarma, Kuyu, Galeri ve Sondajların Planlanması ve Projelendirilmesi, Aramalarda Jeokimyasal ve Jeofiziksel Yöntemler, Yeraltı Jeolojisi, Türkiye'nin Doğal Kaynak Potansiyeli ve Ekonomisi, Doğal Kaynakların Arama ve İşletme Aşamalarındaki Jeoloji Hizmetleri ve Yasalardaki Yeri

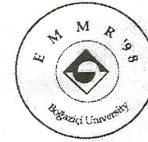
11. Uzaktan Algılama-Coğrafik Bilgi Sistemi Uygulamaları

Kriton Curi Akdeniz Bölgesi Çevre Yönetimi Uluslararası Sempozyumu

I. DUYURU

KRİTON CURI AKDENİZ BÖLGESİ ÇEVRE YÖNETİMİ ULUSLARARASI SEMPOZYUMU

18-20 Haziran 1998
Antalya



Düzenleyen
Boğaziçi Üniversitesi

18-20 Haziran 1998 tarihleri arasında Antalya'da gerçekleştirilecek olan "Kriton Curi Akdeniz Bölgesi Çevre Yönetimi Uluslararası Sempozyumu" Boğaziçi Üniversitesi tarafından düzenlenmektedir.

Sempozyum Konuları

- Çevre Yönetimi Standartları (ISO 14000 vb.)
- Çevre Kirliliği Anlaşmazlıklarının Çözüm Yöntemleri
- Çevre Yönetiminde Bölgesel İşbirliği
- Çevre-Tüketici Korunması
- Çevre Dostu Ürünlerin Ekonomik Gelişmeye Etkileri

- Enerji Politikaları-Çevre Etkileşimi
- Turizm ve Çevre İlişkisi
- Çevre Yönetiminde Yerel Yönetimler ve Sivil Toplum Örgütleri
- Medya ve Çevre
- Çevre Konusunda Araştırma ve Geliştirme Yöntemleri
- Çevre Veri Yönetimi: Veri Toplama ve Veri Tabanı Oluşturma
- Çevre Konularında Tahmin Yöntemleri
- Kirliliğin Önlenmesi: Etkin Yönetim Stratejileri
- Çölleşme ve Erozyon Önleme Politikaları
- Su Ürünleri Yönetimi
- Ormancılık Politikaları ve Yönetimi
- Tarım Politikaları ve Çevre
- Atıkların Uzaklaştırılması: Taşıma, Tasnif ve Yer Seçimi
- Hava Kalitesi ve Hava Kirliliği
- Deniz Kirliliği
- İçme Suyu Kaynakları ve Su Kalitesi
- Tehlikeli Maddelerin Taşınması ve Sınır Ötesi Hareketleri

Yeni Yayınlar / Kitaplar

KARBONAT SEDİMANTOLOJİSİ

Dr. Eşref Atabey

TMMOB Jeoloji Mühendisleri Odası

Yayınları 45 (130 s.)

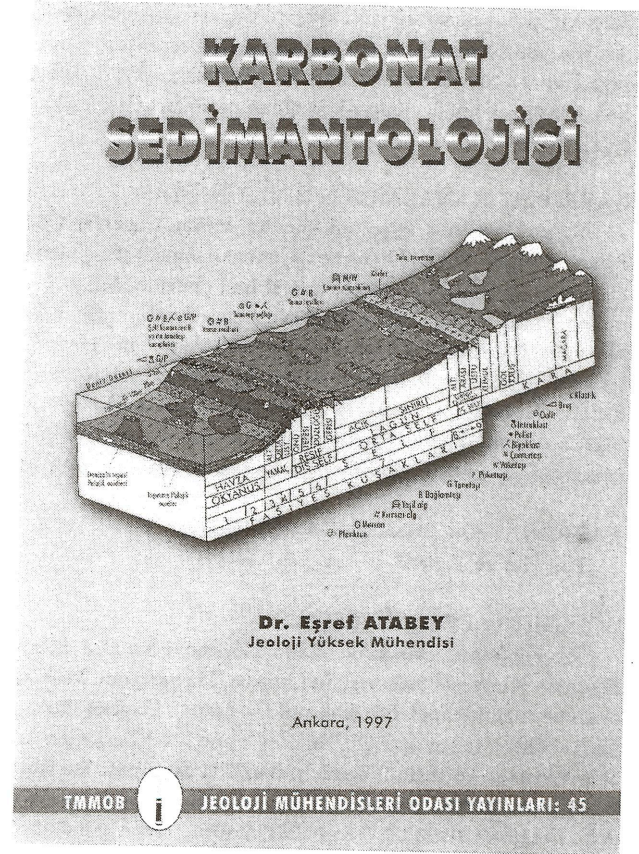
İÇİNDEKİLER

KARBONAT PETROGRAFİSİ

Karbonat Taneleri, Kütleli Özellikler, Karbonat Kayacı Bileşenleri, Taneler, İskeletsel olmayan taneler, Giysili taneler, Ooid ve pisoidler, Onkoidler, İskeletsel olmayan diğer taneler, Biyojen, Peloidler, Agregat taneler, İntraklastlar, Ekstraklastlar (litoklast, kalklitit), Terijen taneler, Otijen taneler, İskeletsel taneler, Bitkiler, Stromatolit oluşumu, Hayvanlar, Bazı organizmaların ekolojik-paleoekolojik özellikleri, Matris (Kireç çamuru), Karadan türeme, İskeletsel gercin parçalanması, Fiziko-kimyasal tepkime ile oluşan kireç çamuru, Biyo-kimyasal tepkimeler, Su kimyasının değişimi, Duru Kalsit (Spari Kalsit), Karbonat Kayası Sınıflaması (Adlanması), Çökeltme koşulları

KARBONAT DEPOLANMA ORTAMLARI ve FASİYES ÖZELLİKLERİ

Karasal Karbonat Ortamları, Karst fasiyesi, Kaliş fasiyesi, Karst ve kalişi tanımlayıcı kriterler, Tufa, palustrine karbonatlar, Traverten, Karasal karbonatların ekonomik önemi, Göl ortamı, Sürekli göller, Göl kıyıları, Açık alanlar, Geçici göller, Yel (kumul) ortamı, Denizel Karbonat Ortamları, Gelgit düzlüğü ortamı, Gelgitüstü zonu fasiyesi kriterleri, Gelgitarası zonu fasiyesi kriterleri, Gelgitaltı zonu fasiyesi kriterleri, Sahil ortamı, Orta şelf (lagün) ortamı, Resif ortamı, Resif tanımı,



Resif karmaşığı, Olgunlaşmış resif karmaşığı, Olgunlaşmamış resif karmaşığı, Resiflerin sınıflandırılması, Bileşime dayanan sınıflama, Organik çatı resifi, Vermetid resifleri, Serpulid resifleri, Oyster (istiridyeye) resifleri, Organik çatı ya da ekolojik resif, Şekle dayanan sınıflama, Kule resifi, Yama resifi, Tepecik resifi, Saçak resifi, Set resifi, Faro, Atol, Stratigrafi ve iç fasiyes dağılımına dayanan sınıflama, Yamaç aşağı karbonat çamuru tümsekleri, Tepecik resifi yokuşları, Duvarlı resif karmaşıkları, Resif kenarı tipleri, Resiflerin doku sınıflaması, Olgunlaşmış resif karmaşığı fasiyesleri, Lagüner fasiyes, Resif gerisi kum fasiyesi, Resif düzlüğü, Resif tepesi fasiyesi, Resif çatısı fasiyesi, Resif yamacı fasiyesi, Yakınca döküntü fasiyesi, Uzakça döküntü fasiyesi, Resif morfolojisini kontrol eden etkenler, Resif oluşturan organizmaların özellikleri, Taban topografyası ve deniz düzeyindeki nisbi değişiklikler, Transgresyon ve regresyon, Denizel çimentolanma, Bozucu fiziksel ve biyolojik işlevler, Resif karmaşığının gelişimi, Resif kayalarının rezervuar potansiyeli, Bank kenarı ortamı, Havza yamacı ortamı, Açık deniz (pelajik) ortamı, Özel çökeltme ortamları, Sert zeminler ve kondanse istifler, Fosfatlı çökeltiler, Fırtına çökeltileri, Anoksik ortamlar, Anoksik göller, Anoksik havzalar, Su kabarması (upwelling) sistemi etkisinde kalan şelf alanları, Açık deniz (okyanus) anoksik ortamlar, Karbonatlarda Fasiyes ve Mikrofasiyes, Fasiyes, Çökeltme fasiyesi, Ortam, Çökeltme ortamı, Mikrofasiyes, Havza ve alt yamaç ortamları (1 ve 3 fasiyes kuşakları), Yamaç ortamları (fasiyes kuşağı 3 ve 4), Ya-

maç, yığışım, şelf ve sıg su ortamları, Organik yığışım ortamları (fasiyes kuşağı 5), Açık dolaşımli şelf ortamı (fasiyes kuşağı 2 ve 7), Sınırlı denizel sıglıklar (Fasiyes kuşağı 7 ve 8), Sınırlı denizel şelf lagünleri-korunmalı ortamlar (Fasiyes kuşağı 7 ve 8)

KARBONAT KAYALARININ DİYAJENEZİ

Yıkıcı Diyajenez, Biyolojik işlevler, Mekanik işlevler, Çözünme (erime), Yapıcı Diyajenez, Çimentolanma, Lifsi çimento, Taneli (granüler) çimento, Işınsal lifsi çimento, Mikrit çimento, Sintaksiyal çimento, Menüsküs çimento, Mikroskalaktik (pandül) çimento, Köpek dişi çimento, Vodoz mili (Jeopetal yapı), Tekrar kristallenme, Minerallerin kimyasal değıştirmeleri (replasman), Fiziksel işlevler, Diyajenez Ortamları, Mg/Ca oranına bağımlı kristalleşme oranları, Karbonatlı çökellerin diyajenez alanları, Resif karmaşıklarında diyajenez

KARBONAT KAYALARINDA POROZİTE

Porozite ve Tipleri

DOLOMİT ve DOLOMİTLEŞME

Protodolomit, Didolomit, Dolomitleşmeyi Kontrol Eden Etkenler, Kimyasal etkenler, Su kimyası, Magnezyum, Mg/Ca oranı ve tuzluluk, pH, Sıcaklık-ppCO₂-basınç, Fiziksel-litolojik özellikler, İklim özelliği, Dolomitleşme Modelleri, Geriye akış (seepage reflexion) modeli, Tuz kabuklaşması (sapka) modeli, Mg temizliği modeli, Karışım zonu (dorag türü) modeli, Dengesiz tuzluluk (şizohalin) modeli, Derin gömülme modeli, Dolomitleşmenin Kökeni, Litolojik veriler, Duraylı izotop, İz elementler, Dolomit Petrografisi

DİDOLOMİTLEŞME

Didolomitleşme ile Gelişen Doku Tipleri, Didolomitleşme Olayının Belirtileri

KARBONAT ÇÖKELLERİ SEDİMANTOLOJİ-STRATİGRAFI PRENSİPLERİ, SEDİMANTASYON VE TEKTONİK

Sedimentoloji Prensipleri, Stratigrafi Prensipleri, Litozom ve biyozom kavramı, Litozomlar arasındaki dikey ilişkiler, Korelasyon, Fasiyes kavramı, Sedimentasyon ve Tektonik

KARBONAT PLATFORMLARI

Karbonat Kenarlı Şelfleri, Karbonat Yokuşları, Epirik Platformlar, Yahtılmış Platformlar, Batmış Platformlar

Not: Kitap Jeoloji Mühendisleri Odasından temin edilebilir.

METAMORFİK PETROGRAFI

Prof. Dr. Yavuz Erkan

Hacettepe Üniversitesi Mühendislik

Fakültesi Yayın No: 28 (202 s.)

İÇİNDEKİLER

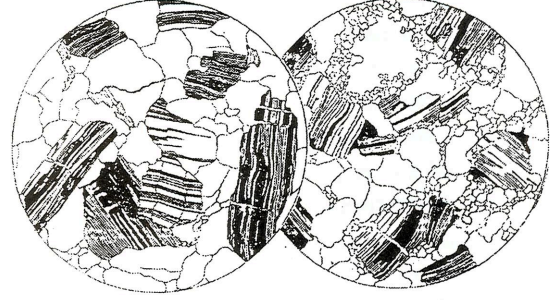
GİRİŞ

Metamorfizmanın Tanımı, Metamorfizma Türleri

KASIM 1997



HACETTEPE ÜNİVERSİTESİ
MÜHENDİSLİK FAKÜLTESİ
YAYIN NO: 28



METAMORFİK PETROGRAFI

Prof. Dr. Yavuz Erkan

METAMORFİZMAYI OLUŞTURAN ETKENLER

Sıcaklık, Basınç, Litostatik Basınç, Stres, Akışkan Faz Basıncı, Kimyasal Bileşim

METAMORFİZMA SÜREÇLERİ

Yeniden Kristalleşme, Yeni Mineral Oluşumu, Metamorfik Farklılaşma, Metasomatizma, Anateksi

MİNERAL TOPLULUKLARININ DİYAGRAM ÜZERİNDE GÖSTERİLMELERİ

Giriş ve Tanımlamalar, ACF-Diyagramı, A^{*}FK-Diyagramı, AFM-Diyagramı, Hesaplalarda İzlenecek Sıra

METAMORFİZMA ZON VE FASİYESLERİ

Metamorfizma Zonları, Metamorfizma Fasiyesleri, Metamorfizma Şiddeti/Derecesi

METAMORFİK KAYAÇLARIN SINIFLANDIRILMASI

METAMORFİK KAYAÇLARIN DOKUSAL ÖZELLİKLERİ

Kristaloblastik Doku, Kristaloklastik Doku, Kalıntı Dokuları, Yönlü Doku

KONTAKT METAMORFİZMA**Giriş**

Kontakt Metamorfizma Fasiyesleri, Kontakt Metamorfik Kayaçların Tanımlanmaları, Killi Kayaçların Kontakt Metamorfizması ile Oluşan Kayaçlar, Karbonatların Kontakt Metamorfizması ile Oluşan Kayaçlar, Epiklastik Sedimanter Kayaçların Kontakt Metamorfizması ile Oluşan Kayaçlar, Magmatik Kayaçların Kontakt Metamorfizması ile Oluşan Kayaçlar, Kontakt Metamorfizma ile ilgili olarak Türkiye'den Örnekler

DİNAMİK METAMORFİZMA**Giriş**

Kataklastik Kayaçların Sahada Gösterdikleri Özellikler, Kataklastik Kayaçların Dokusal Özellikleri, Kataklastik Kayaçların Sınıflandırılması, Birincil Bağlantıya Sahip Olmayan Kataklastik Kayaçlar, Birincil Bağlantıya Sahip Olan Kataklastik Kayaçlar, Kataklastik Kayaçların Birbirleri ile İlişkileri, Çarpma Metamorfizması, Dinamik Metamorfizma ile ilgili olarak Türkiye'den Örnekler

BÖLGESEL METAMORFİZMA**Giriş**

Bölgesel Metamorfizma ile Oluşan Kayaçlar, Killi Kayaçların Bölgesel Metamorfizması ile Oluşan Kayaçlar, Magmatitlerin Bölgesel Metamorfizması ile Oluşan Kayaçlar, Karbonatların Bölgesel Metamorfizması ile Oluşan Kayaçlar, Epiklastik Sedimanter Kayaçların Bölgesel Metamorfizması ile Oluşan Kayaçlar, Granulitler, Eklojitler, Migmatitler, Bölgesel Metamorfizma ile İlgili Olarak Türkiye'den Örnekler

LEVHA TEKTONİĞİ VE METAMORFİZMA

Not: Kitap Jeoloji Mühendisleri Odası ve H.Ü. Jeoloji Müh. Bölümü 06532 Beytepe/Ankara adresinden temin edilebilir.

MAGMATİK PETROGRAFI**Prof. Dr. Yavuz Erkan****Hacettepe Üniversitesi Mühendislik****Fakültesi Yayın No: 40 (181 s.)****İÇİNDEKİLER****GİRİŞ**

Tanımlamalar, Petrografinin Tarihçesi, Yerkürenin Genel Yapısı ve Yerkabuğu, Genel Bilgiler, Yerkabuğu, Manto, Diğer Tanımlamalar, Kayaçların Genel Sınıflandırılmaları ve Kayaç Çevrimi, Kayaçları Oluşturan Mineraller, Petrografik Çalışma Yöntemleri

MAGMATİK KAYAÇLARIN OLUŞUMU

Magma, Magmanın Katılaşması, Magmanın Evrimi, Magmatik Farklılaşma, Özümleme, Magmaların Birbirleriyle Karışmaları

MAGMATİK KAYAÇLARIN JEOLojİK BULUNUŞ ŞEKİLLERİ

Intrüzif Kayaçlar, Çevre Kayaçlarla Konkordan İlişkide Olan Kütleler, Çevre Kayaçlarla Diskordan İlişkide Olan Kütleler, Ekstrüzif Kayaçlar

MAGMATİK KAYAÇLARIN YAPISAL/DOKUSAL ÖZELLİKLERİ

Kayaçların Kristalleşme Derecesi, Kayaç Oluşturan Minerallerin Şekilleri, Kayaç Oluşturan Minerallerin Tane Büyüklükleri, Bileşenlerin Birbirlerine Göre Olan Bağlı Büyüklükleri, Minerallerin Kayaç İçinde Birbirlerine göre olan Durum ve Düzenleri, Magmatik Sokulumların İç Yapısı

MAGMATİK KAYAÇLARDA RENK VE BOZUNMA

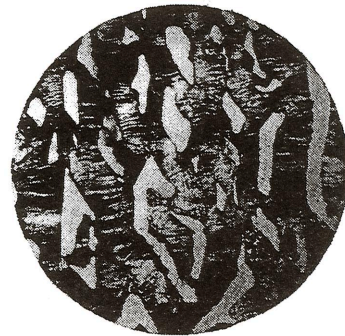
Renk, Bozunma

MAGMATİK KAYAÇLARIN SINIFLANDIRILMALARI

Modal Mineralojik Bileşimin Saptanması, Normatif Mineralojik Bileşimin Saptanması, Magmatik Kayaçların Sınıflandırılmaları, Magmatik Kayaçlardaki Birliktelik



HACETTEPE ÜNİVERSİTESİ
MÜHENDİSLİK FAKÜLTESİ
YAYIN NO: 40

**MAGMATİK PETROGRAFI**

Prof. Dr. Yavuz Erkan

PLÜTONİK KAYAÇLARIN TANIMLANMALARI

Açık Renkli Minerallerden Ana Bileşen Olarak KUVARS ve FELDİSPAT İçeren Plütonik Kayaçlar, Granit, Granodiyorit, Tonalit, Granitik Kayaçların Jeolojik Bulunuş Şekilleri, Açık Renkli Minerallerden Ana Bileşen Olarak FELDİSPAT İçeren, Kuvars ve Feldspatoidin Çok Az Bulunduğu veya Hiç Olmadığı Plütonik Kayaçlar , Siyenit, Monzanit, Diyorit, Gabro, Açık Renkli Minerallerden Ana Bileşen Olarak FELDİSPAT ve FELDİSPATOİD İçeren Plütonik Kayaçlar, Foid-Siyenit, Foid-Monzodiyorit/Foid-Monzogabro, Foid-Diyorit/Foid-Gabro, Feldspatoidli Plütonik Kayaçlar ve Karbonatitler, Foidolitler, Karbonatitler, Ultramafik Plütonik Kayaçlar

DAMAR KAYAÇLARININ TANIMLANMALARI

Mineralojik Bileşimleri Plütonik Kayaçlara Benzeyen Damar Kayaçları, Granitik Bileşimdeki Damar Kayaçları, Siyenitik ve Monzonitik Bileşimdeki Damar Kayaçları, Diyoritik Bileşimdeki Damar Kayaçları, Gabroik Bileşimdeki Damar Kayaçları, Feldspatoidli Damar Kayaçları, Mineralojik Bileşim-

leri Plütonik Kayaçlara Benzemeyen Damar Kayaçları, Kalkali Lamprofirler, Alkali Lamprofirler, Alkali-Ultrabazik Lamprofirler

VOLKANİK KAYAÇLARIN TANIMLANMALARI

Riyolit ve Dasit, Trakit, Latit, Andezit, Bazalt, Fonolit, Tefrit, Foiditik Volkanik Kayaçlar, Melilitit, Pikrit, Volkan-camları, Obsidyen, Pekştayn, Perlit, Pümis, Takilit

PIROKLASTİK KAYAÇLARIN TANIMLANMASI

Piroklastik Malzemenin Tanımlanması, Piroklastik Kayaçların Sınıflandırılması, Piroklastik Kayaçların Dokusal Özelliklerine ve Mineralojik Bileşimlerine Göre Adlandırılmaları, Piroklastik Kayaçların Oluşum Şekillerine Göre Adlandırılmaları, Piroklastik Kayaçların Bozunması

LEVHA TEKTONİĞİ VE MAGMATİZMA

Not : Kitap Jeoloji Mühendisleri Odası ve H.Ü. Jeoloji Mühendisliği Bölümü 06532 Beytepe/ANKARA adresinden temin edilebilir.

Jeoloji Takvimi

1998

January

7-8 January 1998

VOLCANIC AND MAGMATIC STUDIES GROUP ANNUAL RESEARCH IN PROGRESS AND THEMATIC MEETING (Thematic sessions: Planetary Volcanism & Oceanic Volcanism: Processes and Products), Gilbert Murray Hall, University of Leicester, Leicester, UK. (Contact: Andrew C. Kerr, Department of Geology, University of Leicester, University Road, Leicester LE1 7RH, UK. Fax: +44 116 252 3639; E-mail: ack2@leicester.ac.uk; URL: <http://www.le.ac.uk/geology/ack2/vmindex.html>)

26-27 January 1998

● **REMEDICATION BY NATURAL ATTENUATION** (Training), Madison, Wisconsin, USA. (Contact: Mike Waxman, University of Wisconsin-Madison, 432 N. Lake St., Madison, Wis. 53706. Tel: +1 800 462 0876; Fax: +1 608 263 3160)

26-28 January 1998

● **LATIN AMERICAN MINING SUMMIT**, Miami, Florida, USA. (Contact: World Research Group, 7th floor, 1120 Avenue of the Americas, New York, N.Y. 10036, USA. Tel: +1 800 647 7600; Fax: +1 800 717 3237; E-mail: info@worldrg.com)

28-30 January 1998

EXPLORATION METHODS '98: PATHWAYS TO DISCOVERY (International Meeting following annual Cordilleran Roundup), Vancouver, Canada. (Contact: BC and Yukon Chamber of Mines, Attn. Technical Chair, 840 West Hastings St., Vancouver, British Columbia, Canada V6C 1C8. Fax: 604 681 2363; WWW: <http://www.eos.ubc.ca/pathways98>)

28-30 January 1998

SOCIETY OF ECONOMIC GEOLOGISTS (International Meeting, with Exploration Methods '98), Vancouver, British Columbia, Canada. (Contact: <http://www.eos.ubc.ca/pathways98>)

31 January 1998

● **SWISS SEDIMENTOLOGISTS** (Annual Meeting), Fribourg, Switzerland. (Contact: Andre Strasser, Institut de Geologie, Perolles, 1700 Fribourg, Switzerland. Fax: +41 26 300 9742; E-mail: andreas.strasser@unifr.ch)

31 January-14 February 1998

● **VULCANOSPELEOLOGY** (International Symposium and Field Camps), Nairobi, Kenya. (Contact: Bruce Randall, 324 Questend Ave., Pittsburgh, PA 15228, USA. Tel: +1 412 344 0356)

February

1-5 February 1998

● **TERTIARY TO RECENT LARGER FORAMINIFERA: THEIR DEPOSITIONAL ENVIRONMENTS AND IMPORTANCE AS PETROLEUM RESERVOIRS** (Conference and Workshop), Elf-Aquitaine Technical Centre, Pau, France. (Contact: Robert Loucks, ARCO EPT, 2300 W. Plano Parkway, Plano, TX 75075, USA. Fax: +1 972 509 3017)

5-8 February 1998

● **TERTIARY TO RECENT LARGER FORAMINIFERA: THEIR DEPOSITIONAL ENVIRONMENTS AND IMPORTANCE AS PETROLEUM RESERVOIRS** (Field Trip), Kairouan, Tunisia. (Contact: Robert Loucks, ARCO EPT, 2300 W. Plano Parkway, Plano, TX 75075, USA. Fax: +1 972 509 3017)

8-13 February 1998

● **GROUNDWATER—SUSTAINABLE SOLUTIONS** (Conference of IAH Australian Chapter), Melbourne, Australia. (Contact: Convention and Incentive Services, Level 2, 370 Glenhuntly Road, Elsternwick, VIC 3185, Australia. Tel: +61 3 9523 8290; Fax: +61 39528 4046; E-mail: cis@ozemail.com.au)

9-13 February 1998

● **OCEAN SCIENCES** (Meeting), San Diego, California, USA. (Contact: American Geophysical Union, Meetings Dept., 2000 Florida Ave., Washington, DC, USA. Tel: +1 202 462 6900; Fax: +1 202 328 0566; E-mail: meetinginfo@kosmos.agu.org. WWW: <http://www.agu.org>)

15-19 February 1998

● **STATUS OF GLOBAL ENERGY RESOURCES** (Symposium), San Antonio, Texas, USA. (Contact: Don Hausen, 1767 South Woodside Drive, Salt Lake City, Utah 84124, USA. Tel: +1 801 277 0883; Fax: +1 801 277 0612; E-mail: mjoanh@aol.com)

23-25 February

● **AIRBORNE ELECTROMAGNETICS** (International Conference), Sydney, Australia. (Contact: Airborne EM Conference Secretariat, c/o Well Done Events, P.O. Box 1758, North Sydney, NSW 2059, Australia. Tel: 61 44 460 318; Fax: 61-44-460-319; E-mail: judyp@welldone.com.au)

26-28 February 1998

● **GEOLOGICAL DYNAMICS OF ALPINE-TYPE MOUNTAIN BELTS**, Berne, Switzerland. (Contact: Prof. Dr. Albert Matter, Geologisches Institut, Baltzerstrasse 1, CH-3012 Berne Switzerland. Tel: +41 31 631 8767; Fax: +41 31 631 4843; E-mail: amatter@geo.unibe.ch)

March

8-15 March 1998

● **CASE HISTORIES IN GEOTECHNICAL ENGINEERING** (International Conference), St. Louis, Missouri, USA. (Contact: Continuing Education, University of Missouri-Rolla, 103 ME Annex, Rolla, MO 65409-1560, USA. Fax: 1 573 341 4992)

9-11 March 1998

INTEGRATED GEOPHYSICAL TECHNIQUES IN SEISMIC INTERPRETATION (Seminar), Kristiansand, Norway. (Contact: Norwegian Petroleum Society, P.O. Box 1897 Vika, N-0124 Oslo, Norway. Fax: 47 22 55 46 30; E-mail: karin.haugness@npf.no)

9-11 March 1998

● **SOCIETY FOR MINING, METALLURGY, AND EXPLORATION** (Annual Meeting), Orlando, Florida, USA. (Contact: SME, P.O. Box 625002, Littleton, CO 80162, USA. Tel: 1 800 763 3132; Fax: 1 303 979 3461)

10-13 March 1998

● **GEOCHEMICAL EARTH REFERENCE MODEL** (Workshop), La Jolla, California, USA. (Contact: E-mail: germ@igpp.ucsd.edu; WWW: <http://www-ep.es.llnl.gov/germ>)

11-13 March 1998

● **INTERNATIONAL OIL AND GAS EXHIBITION AND CONFERENCE** (TIOGE '98), Ashgabat, Turkmenistan. (Contact: Oil and Gas Division, International Trade and Exhibitions, Byron House, 112a Shirland Rd., London W9 2EQ, UK; Fax: 44 171 286 0177; E-mail: oil+gas@ite-group.com)

16-18 March 1998

● **SEISMOLOGICAL SOCIETY OF AMERICA** (Annual Meeting), Boulder, Colorado, USA. (Contact: SSA, 201 Plaza Professional Bldg., El Cerrito, CA 94530, USA; Tel: 1 510 525 5474; Fax: 1 510 525 7204; E-mail: sneman@seis.nsoz.org)

16-20 March 1998

LUNAR AND PLANETARY SCIENCE (International Conference), Houston, Texas, USA. (Contact: LeBecca Simmons, Conference Administrator, LPI Publications and Program Services Department, 3600 Bay Area Boulevard, Houston, TX 77058-1113, USA. Tel: 1 281 486 2158; Fax: 1 281 486 2160; E-mail: simmons@lpi.jsc.nasa.gov)

22-24 March 1998

● **GEOLOGICAL CONFERENCE ON EXPLORATION IN MURZUQ BASIN**, Sebha, Libya. (Contact: Dr. Mustafa Sola, Organizing Committee Secretary, National Oil Corporation, P.O. Box 2655, Tripoli, Libya. Tel: +218 21 44 46181-9 ext. 2303; Fax: +218 21 333 1930)