

HIGHLAND FORTRESSES-CEMETERIES AND SETTLEMENT COMPLEXES OF MT SÜPHAN-MUŞ PLAINS IN THE LAKE VAN BASIN: FROM THE MIDDLE BRONZE TO THE MIDDLE IRON AGE (URARTU)

VAN GÖLÜ HAVZASI SÜPHAN DAĞI-MUŞ OVALARI YÜKSEK YAYLA KALELERİ-MEZARLIKLARI VE YERLEŞİM KOMPLEKSLERİ: ORTA TUNÇ ÇAĞI'NDAN ORTA DEMİR ÇAĞI'NA (URARTU)

Aynur ÖZFIRAT *

Makale Bilgisi

Başvuru: 5 Aralık 2016

Hakem Değerlendirmesi: 5 Ocak 2017

Kabul: 17 Şubat 2017

DOI Numarası: 10.22520/tubaar.2017.20.003

Article Info

Received: December 5, 2016

Peer Review: January 5, 2017

Accepted: February 17, 2017

DOI Number: 10.22520/tubaar.2017.20.003

Keywords: Muş Plains, Mt Süphan, Middle Bronze Age, Late Bronze-Early Iron Age, Urartu, Lake Van Basin

Anahtar Kelimeler: Muş Ovaları, Süphan Dağı, Orta Tunç Çağ, Son Tunç-Erken Demir Çağ, Urartu, Van Gölü Havzası

ABSTRACT

Fortresses-cemeteries and settlement complexes situated in the high plateau on the western slope of Mt Süphan which were studied in the basin of Lake Van survey is discussed in this article. In many archaeological sites located on Mt Süphan and the surrounding foothills in the Murat Valley-Muş Plains, fortresses and cemeteries, situated on the western slope of the mountain, are in large quantities. The most remarkable sites of our survey are settlement complexes. It seems that highlands, which had been very limitedly used in Early Bronze Age-Kura Araxes, were highly densely populated from Middle Bronze to the Early Iron Age. The cemeteries of Middle Bronze Age, found widespread on the highlands of Mt Süphan, imply the existence of a considerable population, no related settlements is observed. Settlement pattern again changed in the Late Bronze-Early Iron Age, as shown by the highland fortresses-cemeteries. The increase in the number of fortresses in this period is striking in the whole region.

* Prof. Dr., Mardin Artuklu Üniversitesi, Edebiyat Fakültesi, Arkeoloji Bölümü, Kampüs Yerleşkesi, Diyarbakır Yolu 5. km, Artuklu-Mardin
E-mail: aynurozfirat@gmail.com

Assyrian and Urartian epigraphic sources give information about these local pre-Urartian polities of eastern Anatolia starting from 13th century BC, which are mentioned under the names of Uruatri and Nairi lands. Fortresses-cemeteries located in highlands, which were understood to be used extensively by these Early Iron Age (pre-Urartian) polities. Middle Iron Age-Urartian pottery were seen, though smaller in numbers compared to the Early Iron Age. It seems that, some of the local fortresses and seasonal settlements for animal husbandry have been used in Middle Iron Age-Urartu. Basically, Urartian constructions were built on a strategic location in the lower areas compared to the Early Iron Age.

ÖZET

Süphan Dağı'nın batı eteğindeki yüksek yaylada yer alan kaleler ve mezarlıklar ile yerleşim kompleksleri makalenin konusunu oluşturur. Van Gölü Havzası yüzey araştırmamız çerçevesinde incelenen bu yüksek yayla ile onu çevreleyen Van Gölü ve Murat Vadisi-Muş Ovalarına bakan eteklerinde yer alan kale ve mezarlıklar oldukça fazladır. Yerleşim Kompleksleri bu alanlar içinde ayrıcalıklı konuma sahiptir. İlk Tunç Çağ-Kura Araxes dönemine ait birkaç parça çanak çömlek otlakların-yaylaların bu dönemde kısmen kullanılmış olduğunu gösterse de çok sayıdaki bulgu Orta Tunç ve Son Tunç-Erken Demir çağlarında yüksek yaylaların oldukça yoğun bir şekilde kullanıldığını gösterir. Orta Tunç Çağı'na ait yerleşim izine rastlanmamıştır, bu döneme ait yalnızca geniş alanlara yayılmış mezarlıklar bulunmuştur. Son Tunç-Erken Demir Çağ'ında yerleşim sistemi yeniden değişmiştir, tüm bölgede yüksek alanlarda ve ovaları-vadileri çevreleyen dağ eteklerinde çok sayıda kale ve mezarlık karşımıza çıkar.

Assur kaynaklarında MÖ 13. yüzyıldan başlayarak Uruatri ve Nairi adlarıyla karşımız çıkan ve Urartu Krallığı öncesinde bölgeyi küçük coğrafi birimler çerçevesinde yöneten Erken Demir Çağ (pre-Urartu) beyleri ya da yerel krallıkları tarafından yoğun olarak kullanıldığı anlaşılan bu kale ve mezarlıklarda Orta Demir Çağ-Urartu Dönemi'ne ilişkin çanak çömleklere daha az sayıda olmak üzere rastlanmıştır. Bu durum, Urartu tarafından çok daha alçak alanlarda kurulan yeni kaleler dışında, eskinin yüksek yaylalarda ve dağ eteklerindeki yerel kalelerinin kullanımının hayvancılık ve yayla faaliyetleri nedeniyle devam etmesiyle açıklanabilir.

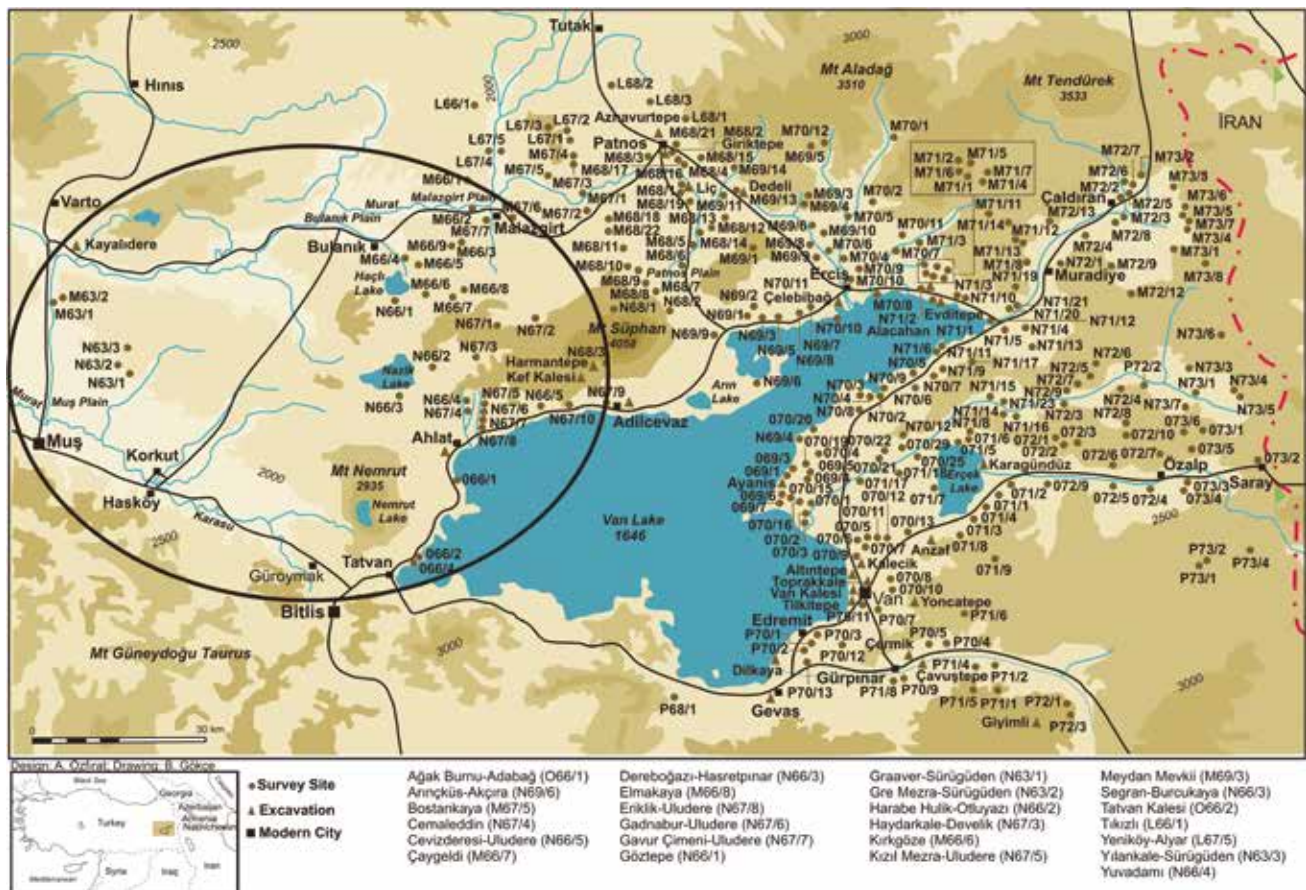
INTRODUCTION

Fortresses-cemeteries and settlement complexes situated in the high plateau on the western slope of Mt Süphan which were studied in the basin of Lake Van survey is discussed in this article. More than 290 sites have been listed, most of which date to the Early-Middle Iron Age (MIA-Urartu, c. 900-600 BC); their occupation span seems to extend from the Late Chalcolithic (LC, c. 3750-3400 BC) to the Late Iron Age (LIA-Achaemenid, c. 600-334 BC), (Fig. 1). Other than a large workshop which can be dated to the Paleolithic-Neolithic-Chalcolithic ages, uncovered in the Meydan Yaylası Crater (M69/3) on the southern slope of the Mt Aladağ, which is on the north of Lake (Fig. 1)¹, no earlier evidence was found.

Lake Van Basin is important not only for its exceptional geography in the eastern Anatolia and its location between Near East and Caucasus but also for it's being the central region of the Urartian Kingdom. Lake Van is a depression

basin surrounded by volcanos and mountains². Volcanism starting at the east of the Upper Euphrates Valley with the Bingöl Mountains continues towards northeast with Mt Ağrı by surrounding Lake Van with Mt Nemrut and Mt Süphan to the west, and Mt Aladağ and Mt Tendürek to the north. Other than these volcanic mountain ranges surrounding the west and north of the basin, its south and east sides are bordered by Mt Southeastern Taurus (Fig. 1). High plateau plains, river valleys and the fertile pastures on the highlands have been the living spaces between these high mountain ranges.

As in whole eastern Anatolian high plateau, the land suitable for the agriculture is quite rare in the basin of Lake Van, where, however, is suitable for the animal husbandry. In the basin, which was rich of the pastures, the economy of animal husbandry and the pastures connected to the pastoral life has an important socio-economic role in the region. These pastures situated on the highlands are also rich for archaeology. As well as the archaeological sites concentrated in the lowlands which include river valleys and plains, the settlements situated on the surrounding mountain slopes and highland pastures comprise the entire settlement system of the



eastern Anatolian high plateau. Even if our knowledge on the functions of highlands settlements are insufficient, seasonal settling, transhumance and nomadism, which are parts of pastoral life, might have been practiced in the region where animal husbandry was prevalent in the past just as today.

Nemrut and Süphan volcanoes, which surround the western side of Lake Van, are important for the region with their widespread grass-rich plateaus. Many large and small volcanic lakes within these pastures form the wetlands. Both mountains that are surrounded by Lake Van and Murat River, the second largest branch of the Euphrates, and valleys-plains of its smaller branches: Patnos Plain³, situated between Mt Süphan and Mt Aladağ and watered by the Bağdişan River to the north; and Malazgirt and Bulanık plains where Murat River runs through; and the Muş Plain, which was watered by Karasu, starting from Mt Nemrut and converges with Murat River, are the fertile plains of the region. In fact, Malazgirt, Bulanık and Muş plains in the Murat Valley and within the administrative borders of the Muş Province are also called Muş Plains. Karasu-Murat Valley is the main route between Lake Van and Upper Euphrates on the western direction, and it is also important to reach the south of Mt Southeastern Taurus. In the east, small plains in Ahlat, Adilcevaz and Tatvan on the shore of Lake Van are also important for the region.

In many archaeological sites located on Mt Süphan and the surrounding Murat Valley-Muş Plains and on the eastern shore of Lake Van, Middle Bronze Age (MBA, c. 2300/2200-1400/1300 BC) and Late Bronze-Early Iron Age (LBA-EIA, c. 1400/1300-900 BC) fortresses and cemeteries, located on the western slope of the mountain, are in large quantities. The most remarkable sites of our survey in the basin of Lake Van and Mt Ağrı region are settlement complexes, each of which covers separate units in a vast area within a long time, related to each other⁴. These settlement complexes include mounds, cemeteries, lower cities and fortresses that lie from Late Chalcolithic to MIA-Urartu or Late Iron Age-Achaemenid. Their huge expanse is because of horizontal stratigraphy. They were located in the central area of geographical units, where were convenient localizations, such as, agricultural activities, pastures, highland and primary routes. Settlement complexes of western slope of Mt Süphan are Elmakaya, Sürügüden and Sütey Yaylası.

FORTRESSES AND CEMETERIES

Investigated fortresses and cemeteries were on the highland of western slope of Mt Süphan, most of which date to the MBA-LBA-EIA and partly to MIA-Urartu. The sites of Mt Süphan are concentrated within the MBA-EIA timespan, though a few Early Bronze Age-Kura-Araxes (EBA) sherds were collected only from the cemeteries of Yuvadamı (N66/4) and Harabe Hulik-Otluyazı (N66/2), which is in Sütey Yaylası (Fig. 1)⁵. Substantially, the great majority of MBA evidences were found from the large cemeteries; however, EIA-MIA sites are generally consisted of a fortress flanked by cemeteries on their slopes.

MIDDLE BRONZE AGE

MBA remains were uncovered only in the cemeteries of Sütey Yaylası and Elmakaya complexes together with LBA-MIA material. Actually, they are not so far from each other; both complexes are situated on the same high plateau which is also connected to the ancient route of the Ahlat-Adilcevaz-Malazgirt, between Lake Van and Murat Valley through the western slope of Mt Süphan (Fig. 1, 8, 13).

Elmakaya settlement complex extends over a large sloping area located at the northwestern slope of the Mt Süphan overlooking to Murat Valley-Bulanık Plain and a small lake (Haçlı-Bulanık), (Figs. 1-3; 13). These foothills are also the largest pasture-yayla in area. Elmakaya settlement complex contains related sites of Kırkgöze (M66/6)⁶, Çaygeldi (M66/7) and Elmakaya (M66/8) villages⁷. Mounds, fortresses and cemeteries which are situated in an incredibly large area, rises towards the mountain starting from lower slopes in the villages (Figs. 2-3). The pottery collected in this area where many graves were located, date to MBA-EIA, except for a few MIA. There is no evidence of a fortresses which situated on the rocky hills near the cemeteries, which were large enough to sustain the population of these large cemeteries, and we haven't found any substantial architectural remains. Mounds located in the villages are covered by the modern villages, and therefore, it is difficult to define their dimensions and to find any evidence.

Sütey Yaylası located in a wide area at the southwestern slope of the mountain overlooking to Lake Van. It

³ For the settlements and fortresses-cemeteries of Patnos Plain, see Özfırat 2009.

⁴ Özfırat 2014a; Özfırat 2016; Özfırat (In press b).

⁵ Özfırat 1994; Özfırat 1999.

⁶ Burney 1958; Russell 1980; Özfırat 2001b; Özfırat 2008; Biber / Çavuşoğlu/Erdoğan 2012.

⁷ Rothman 1993; 1995; Özfırat 1999; 2005a; 2008; Biber/Çavuşoğlu 2011; Biber, 2013.

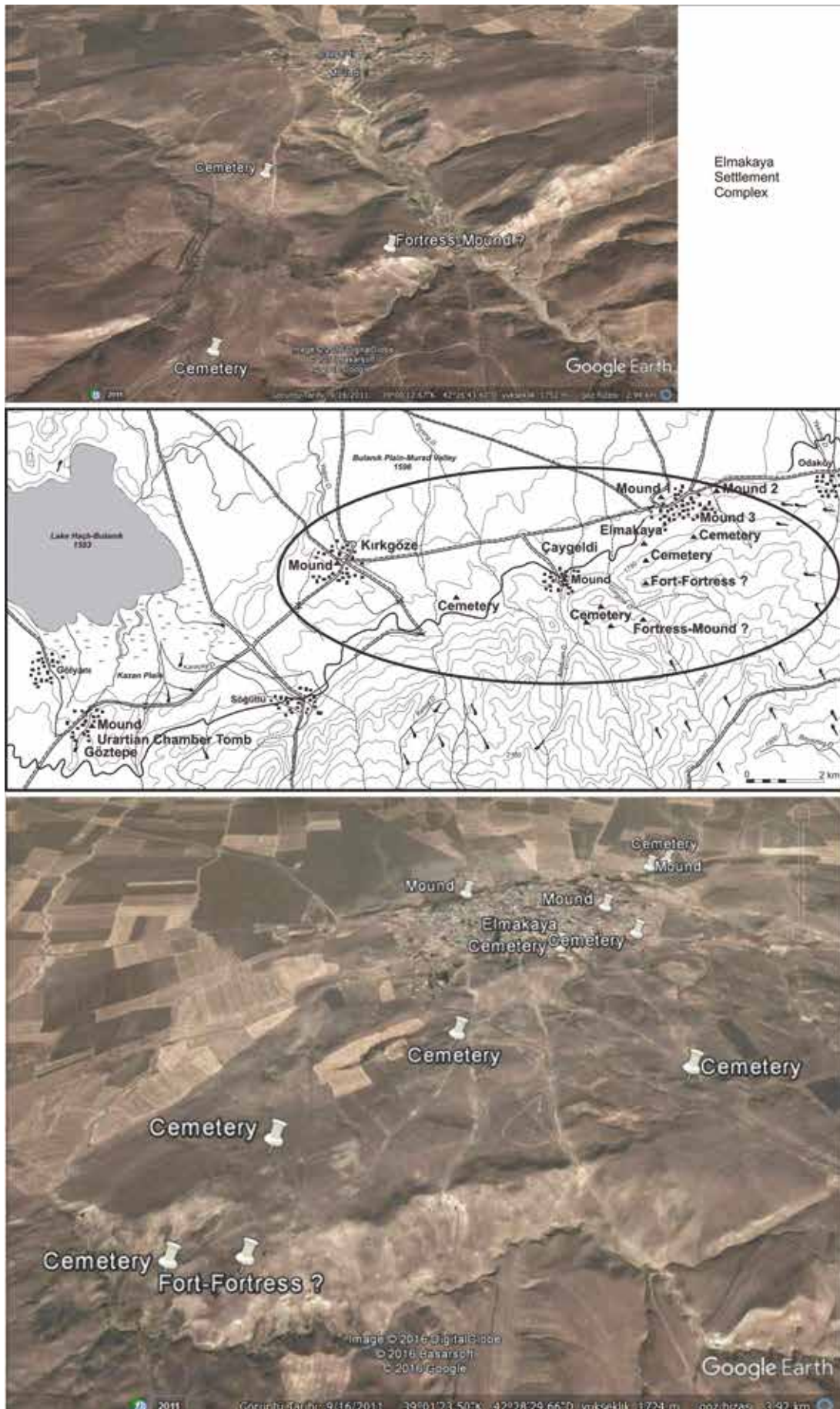


Figure 2: Elmakaya Settlement Complex / Elmakaya Yerleşim Kompleksi

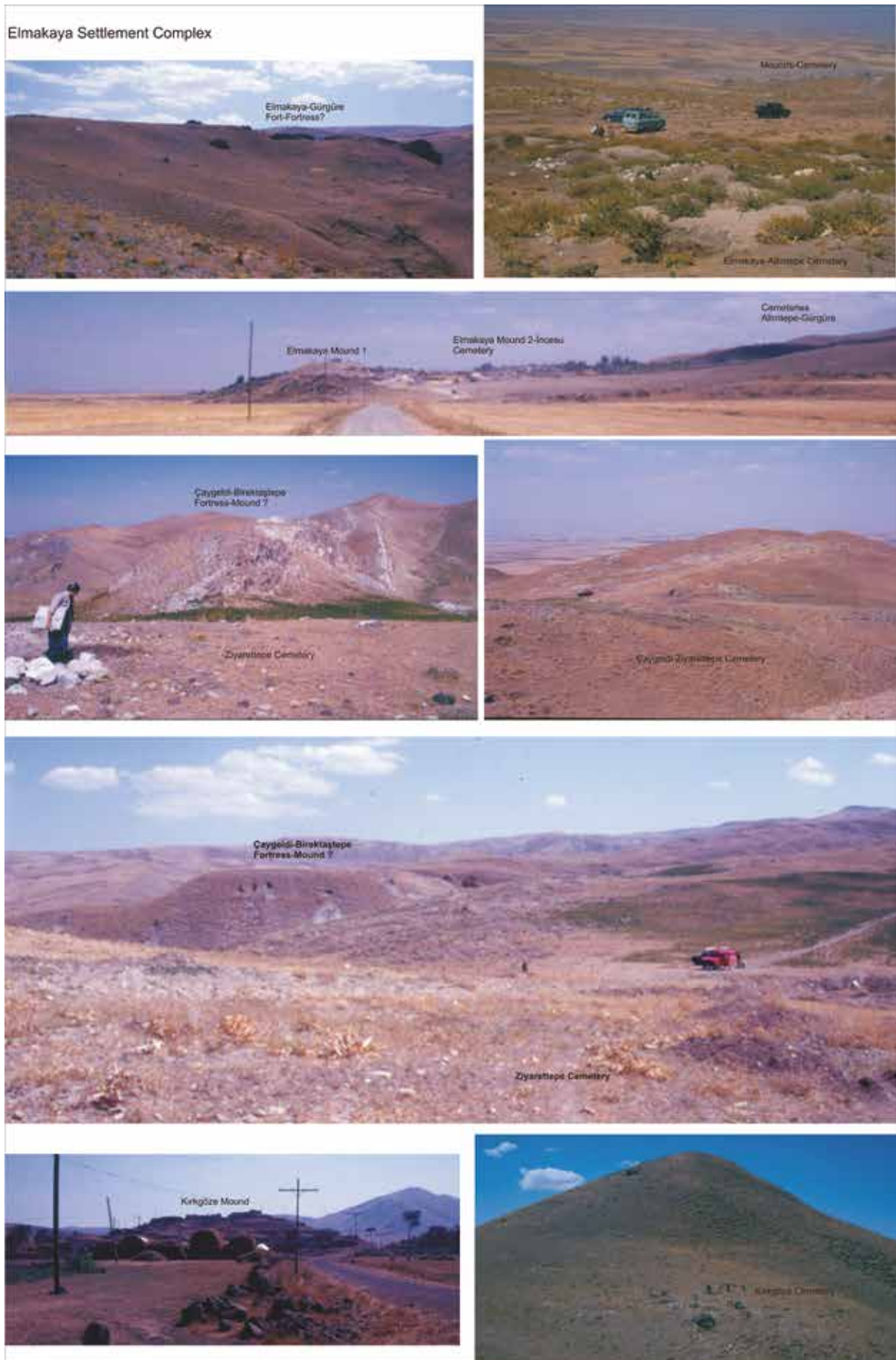
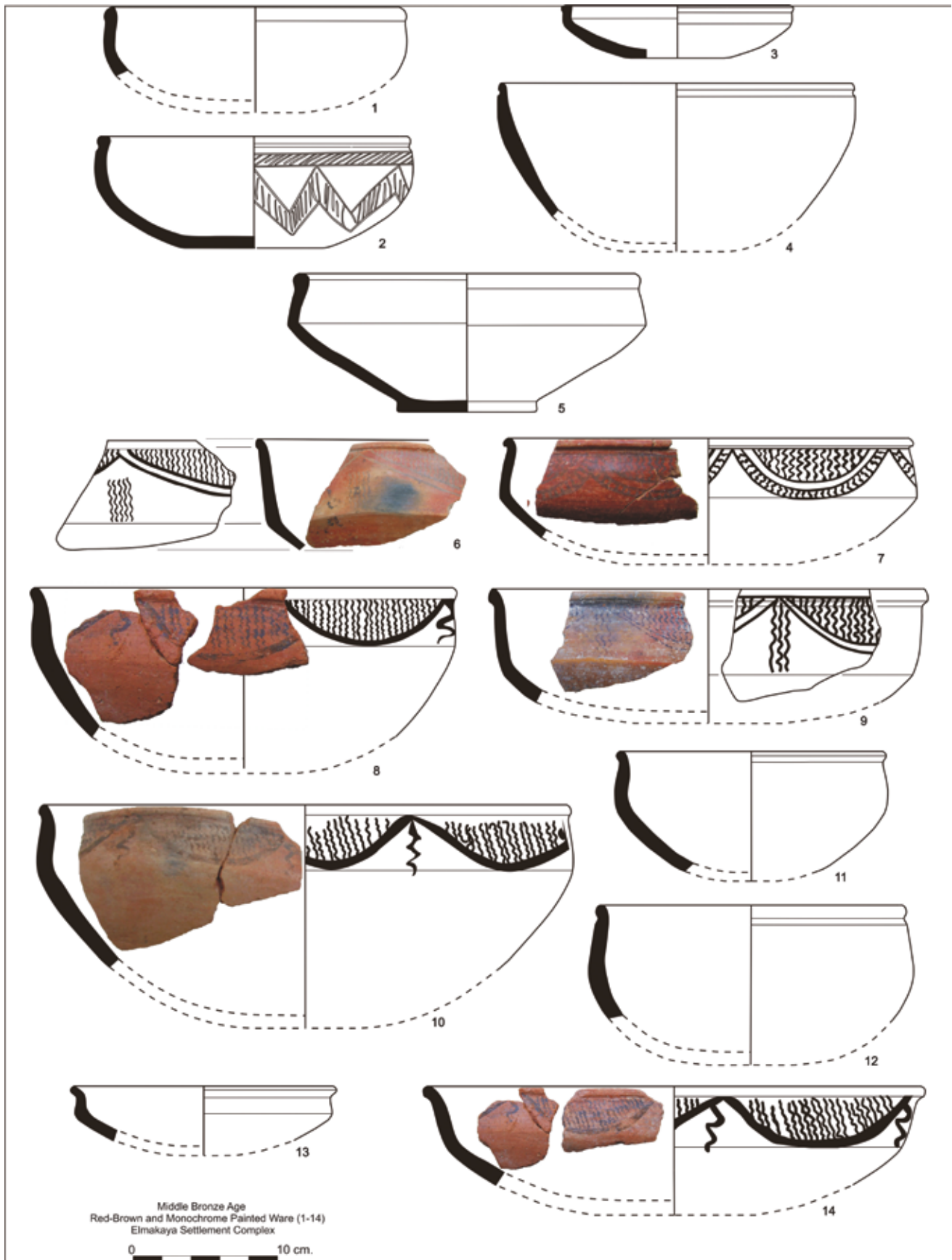


Figure 3: Elmakaya Settlement Complex / Elmakaya Yerleşim Kompleksi

Figure 4: Elmakaya Settlement Complex / *Elmakaya Yerleşim Kompleksi*

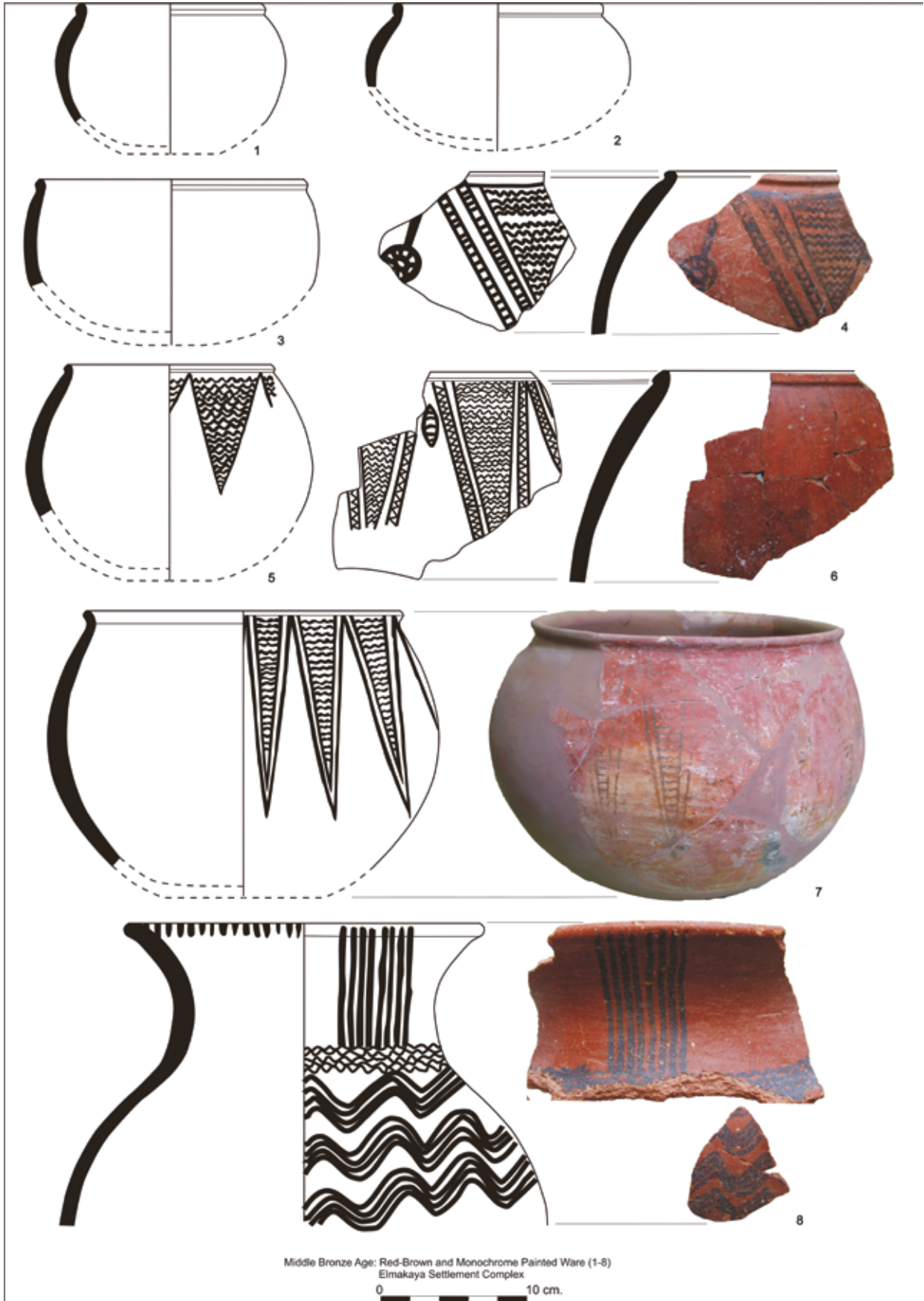
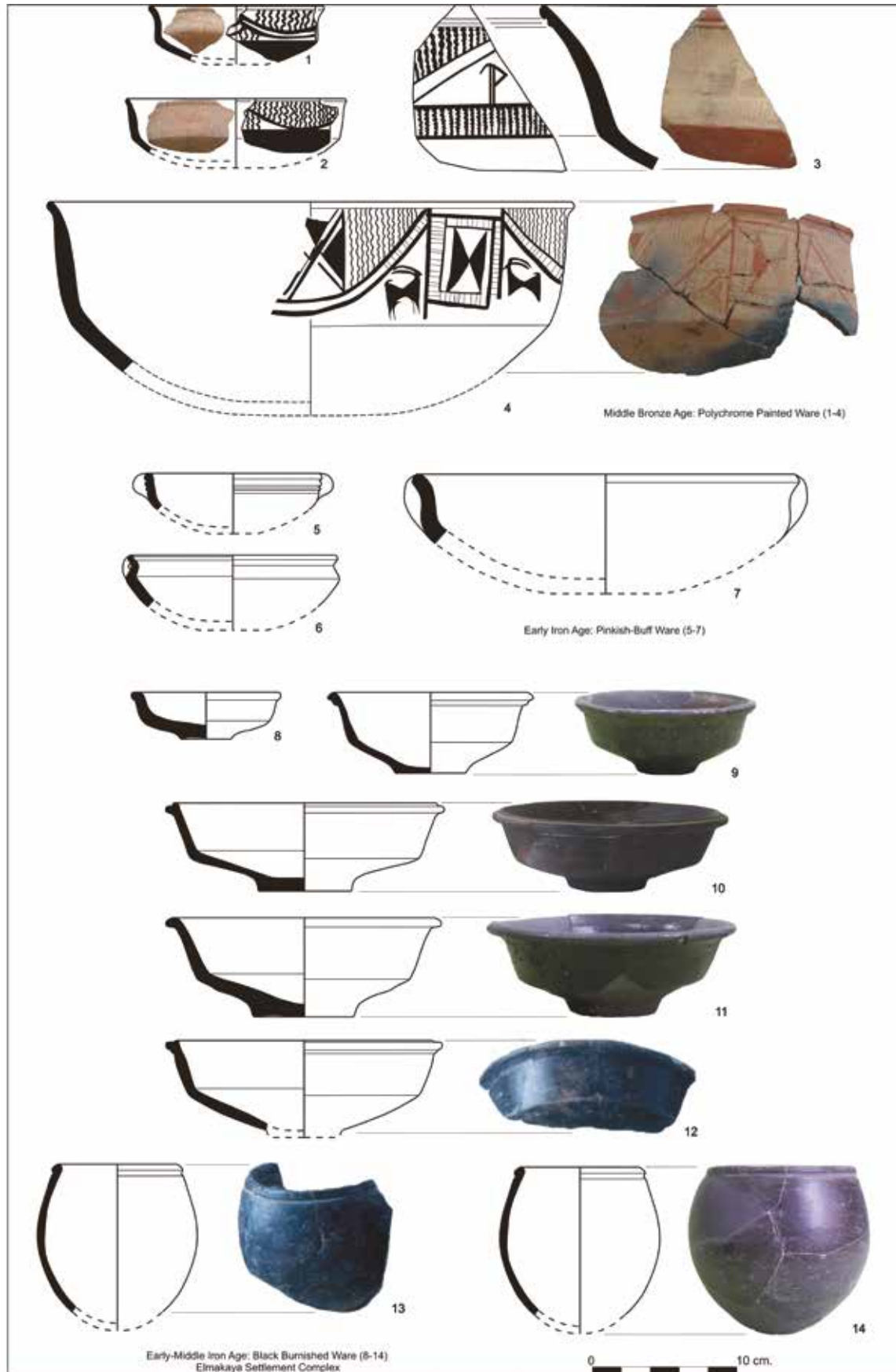


Figure 5: Elmakaya Settlement Complex / *Elmakaya Yerleşim Kompleksi*

Figure 6: Elmakaya Settlement Complex / *Elmakaya Yerleşim Kompleksi*

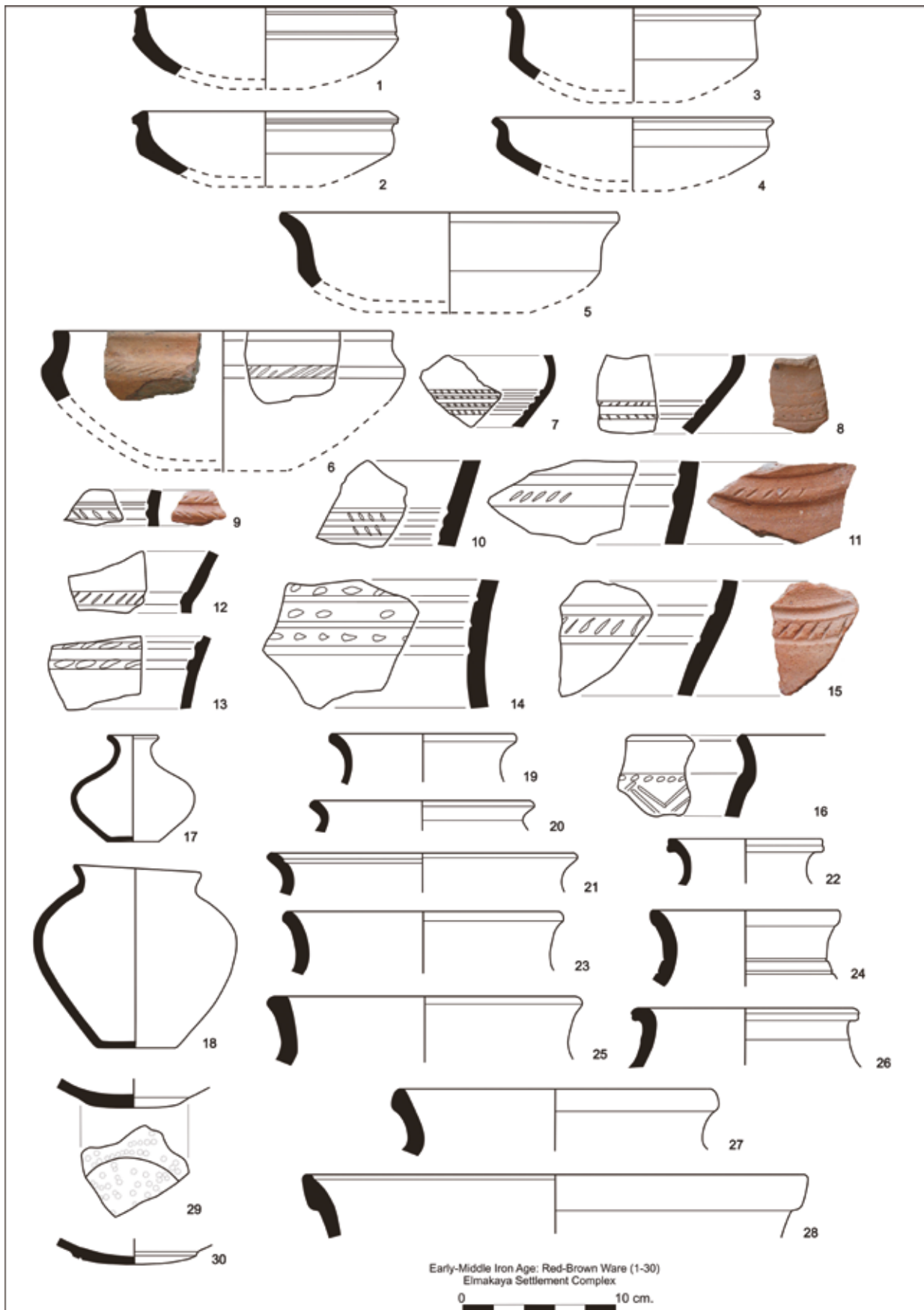


Figure 7: Elmakaya Settlement Complex / Elmakaya Yerleşim Kompleksi

includes EBA-MIA cemeteries of Yuvaldamı (N66/4), Cemaleddin (N67/4), Kızıl Mezra-Uludere (N67/5), Gadnabur-Uludere (N67/6), Gavur Çimeni-Uludere (N67/7) and Eriklik-Uludere (N67/8), which lie in the valleys flowing into Lake Van, next to Ahlat (Figs. 1; 8; 13). Yuvaldamı Cemetery, which dates to EBA-MIA, is located on both slopes overlooking the Gaban Stream; each slope appears to have been used in a separate period (Figs. 8-9 - 13). Other cemeteries situated on Uludere Valley, as in the case of Yuvaldamı, are located on the slopes overlooking the stream, and they have all been used in different periods. Sütey Yaylası is the most important pasture-yayla in the region even today. The materials found from MBA are Yuvaldamı, Cemaleddin and Eriklik in the Sütey Yaylası cemeteries (Fig. 8-9)⁸.

It is difficult to define grave type owing to the material came from survey and because the great majority of the cemeteries were pillaged. We can distinguish mainly simple or stone-lined pits and very low burial mounds (low kurgan) in Yuvaldamı, which had very low, topped with earth over the stone-lined pits made of unworked stones or pit graves (Fig. 9). Actually, Van Basin is outside of principal kurgan zone, except for a few examples on the northern part of lake. Mt Aladağ and Mt Tendürek, which surround the northern side of the lake and geographically and archaeologically separate the region with Mt Ağrı, are also the border for the kurgan zone. To the north, around Mt Ağrı and northeastern Anatolia, kurgans are clearly dominant⁹.

Cemeteries, which are not related to any settlement, appear on the high pastures of mountain slope. Some of the MBA sherds from fortresses of Yılankale-Sürügüden Complex (N63/3), (Fig. 14)¹⁰, Haydarkale-Develik (N67/3), (Fig. 13)¹¹ and Çaygeldi (M66/7)-Elmakaya Complex (Figs. 2-3) seem very low in density in comparison to the data gathered from the cemeteries. In addition, these fortresses strongly settled in the EIA, partly in the MIA-Urartu.

Pottery of MBA is represented by “Van-Urmia” tradition, which is one the style of “Araxes painted ware” related with southern part of Southern Transcaucasia (Nakhichevan, Araxes Valley in Iranian Azerbaijan) and western side of Lake Urmia¹². The pottery is quite homogeneous and probably reflects that all the sherds come from graves. It is mostly red-

brown with its variations of unpainted ware (Figs. 4: 1-5, 11-13; 5: 1-3; 10; 5-7; 11: 1-12), monochrome (Figs. 4: 6-10, 14; 5: 4-8; 10: 1-2; 15: 1-4) and polychrome (Figs. 6: 1-4; 10: 3-4; 15: 5) painted. Black burnished ware, which constitutes the second largest group of this period, have not been found in the basin of Lake Van. The black burnished ware constitutes the largest group of northeastern Anatolia (Mt Ağrı-Erzurum-Kars), northern part of Southern Transcaucasia, throughout the MBA.

LATE BRONZE-EARLY IRON AGE

Fortresses-cemeteries were gathered in Elmakaya, Sütey Yaylası and Sürügüden complexes.

Segran-Burcukaya (N66/3) and Haydarkale-Develik (N67/3) fortresses are situated in Sütey Yaylası (Fig. 1; 13). Segran Fortress located on a high cliff overlooking to Lake Nazik (Fig. 13)¹³. It has in a roughly rectangular-oval plan, shaped by the topography, and is in 175 x 115 meters dimensions. There are two gates on the same axis in east-west, and large rooms built into the walls. Fortification walls built with cyclopean stones are 3 meters thick. No potsherds were discovered, but, it can be dated to LBA by the cyclopean stone masonry. Haydarkale is located almost at the highest point of the Sütey Yaylası, on a steep cliff (Fig. 13)¹⁴. Architectural remains are not very distinctive. Though the large unworked blocks on the fortress with an approximate area of 300 x 200 meters make us think of the presence of thick fortification wall. There is no evidence that can provide us with a plan, but it looks that the fortress was shaped by the topography. Some MBA and mainly LBA-EIA-MIA potsherds were uncovered in the fortress.

Sürügüden settlement complex includes Yılankale (N63/3), Gre Mezra (N63/2) and Graaver (N63/1), which is within the borders of the Sürügüden Village; they are defined as settlement complex with their apparent relationship with each other in both pottery and location (Figs. 1; 14)¹⁵. It is situated to the west of Mt Süphan and Mt Nemrut, on the range of Mt Otluk-Handris, which surrounds Muş Plain from the north. The settlements are located on the southwestern slope of the mountain overlooking to Muş Plain-Murat Valley, on the road of Sarıdal Yaylası.

⁸ Özfırat 2001a; Özfırat 2005a; Özfırat 2008.

⁹ Özfırat 2014a; Özfırat 2014b.

¹⁰ Özfırat 1999; Özfırat 2005a; Biber 2016.

¹¹ Özfırat 2000; Özfırat 2005a.

¹² Özfırat 2001a; Özfırat 2008.

¹³ Özfırat 1999.

¹⁴ Özfırat 2000.

¹⁵ Özfırat 1999.

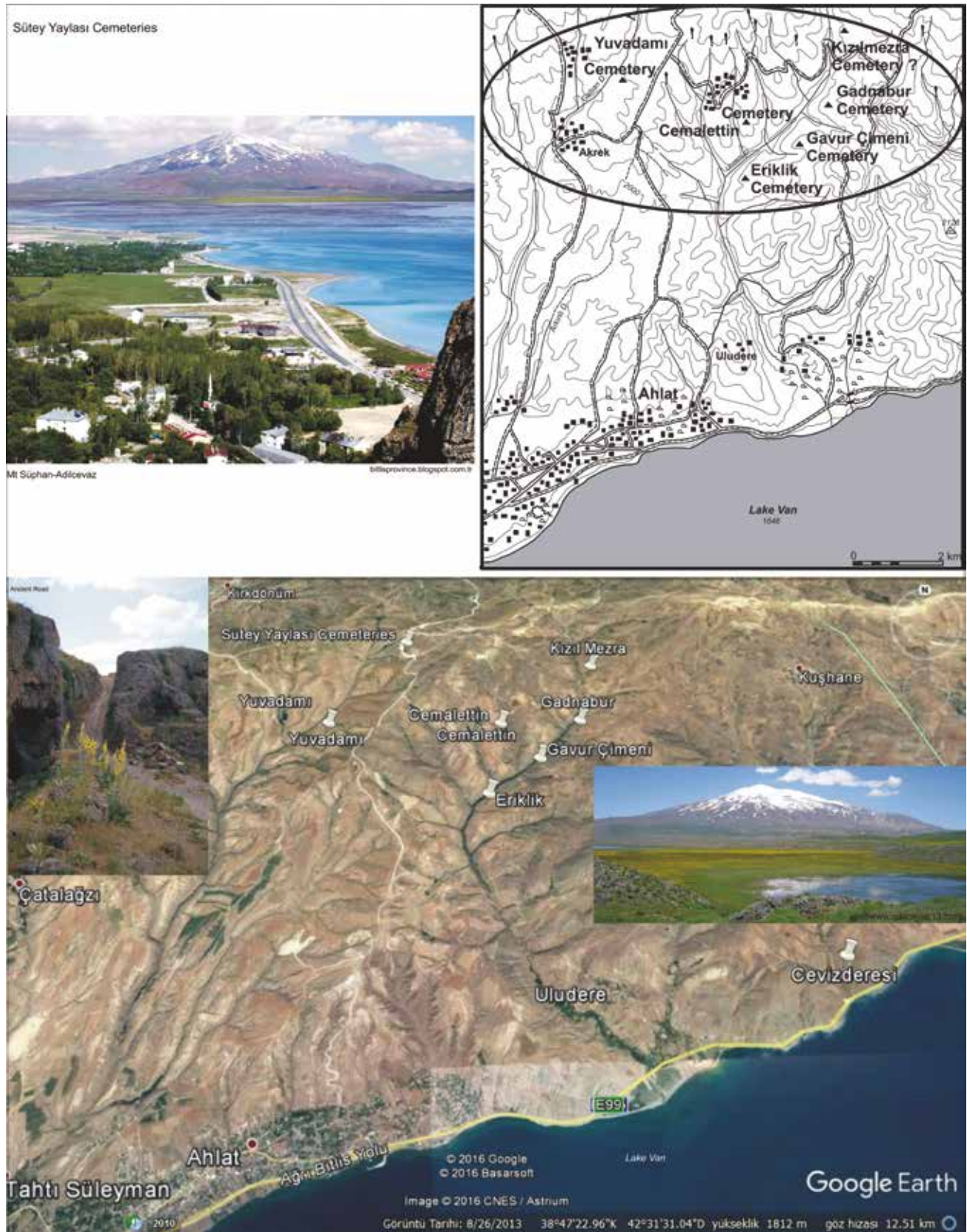


Figure 8: Sütey Yaylası Cemeteries / Sütey Yaylası Mezarlıkları

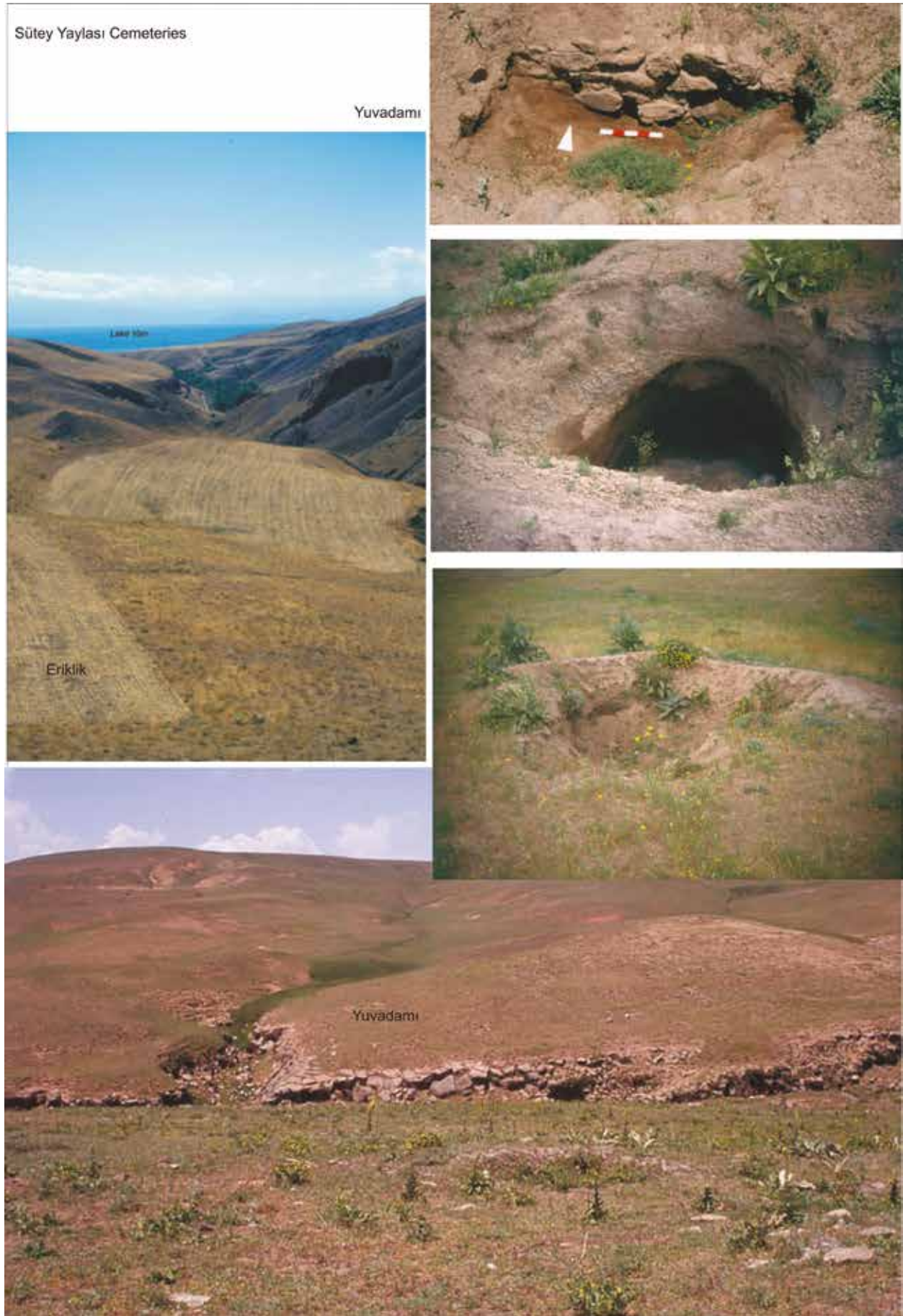


Figure 9: Sütey Yaylası Cemeteries / Sütey Yaylası Mezarlıkları

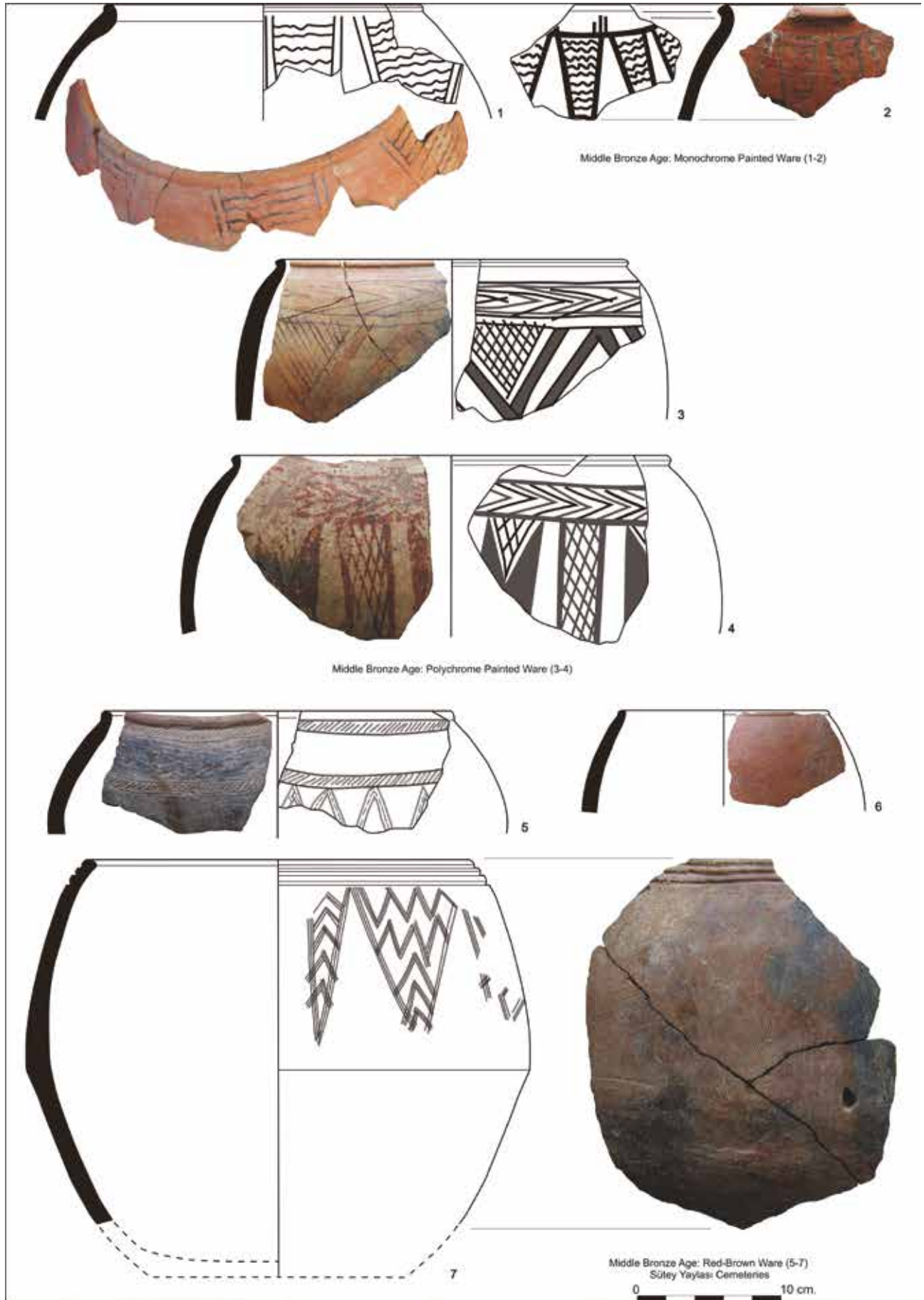


Figure 10: Sütey Yaylası Cemeteries / Sütey Yaylası Mezarlıkları

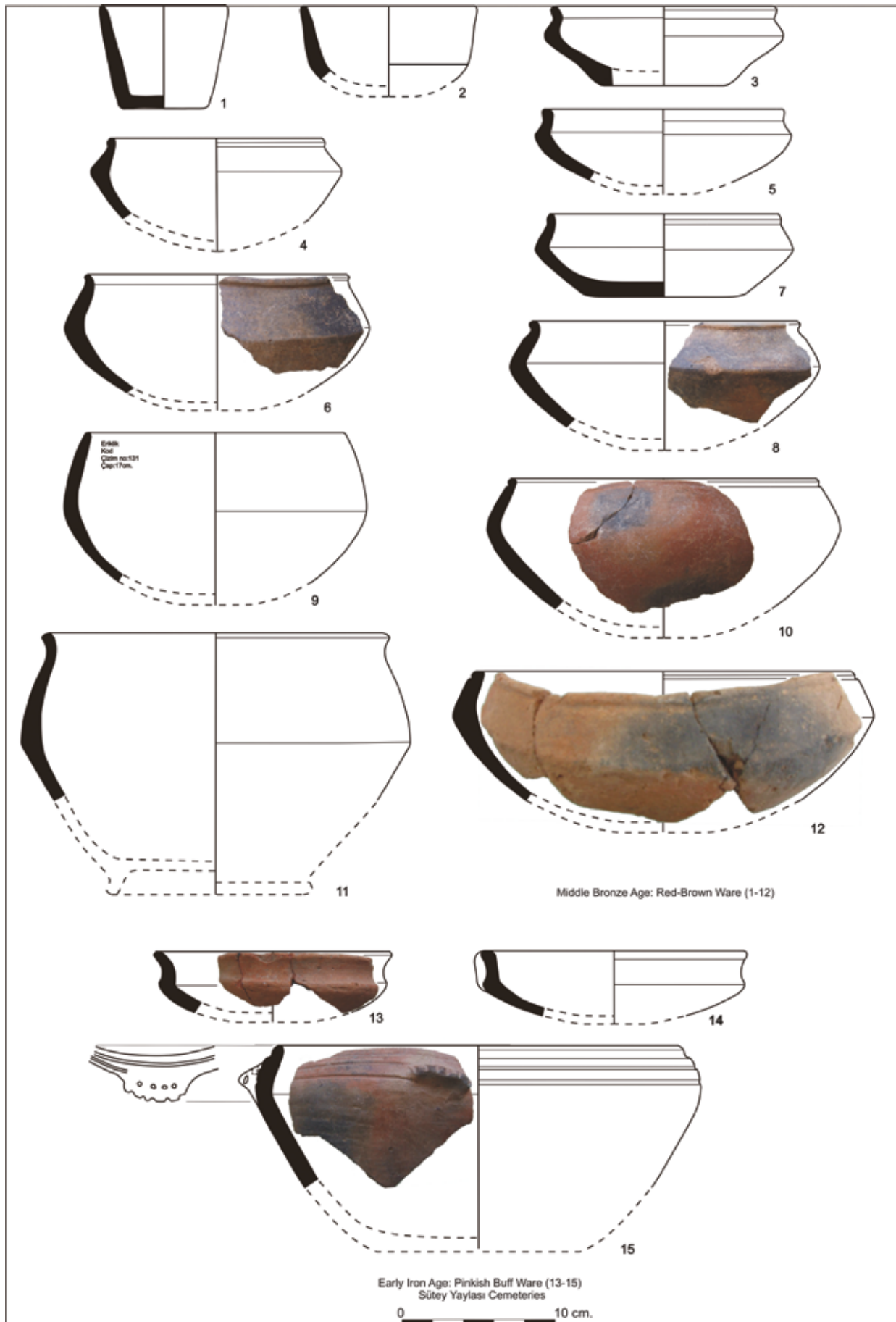


Figure 11: Sütey Yaylası Cemeteries / Sütey Yaylası Mezarlıkları



Figure 12: Sütey Yaylası Cemeteries / Sütey Yaylası Mezarlıkları

HIGHLAND FORTRESSES-CEMETERIES AND SETTLEMENT COMPLEXES OF MT SÜPHAN- MUŞ PLAINS IN THE LAKE VAN BASIN

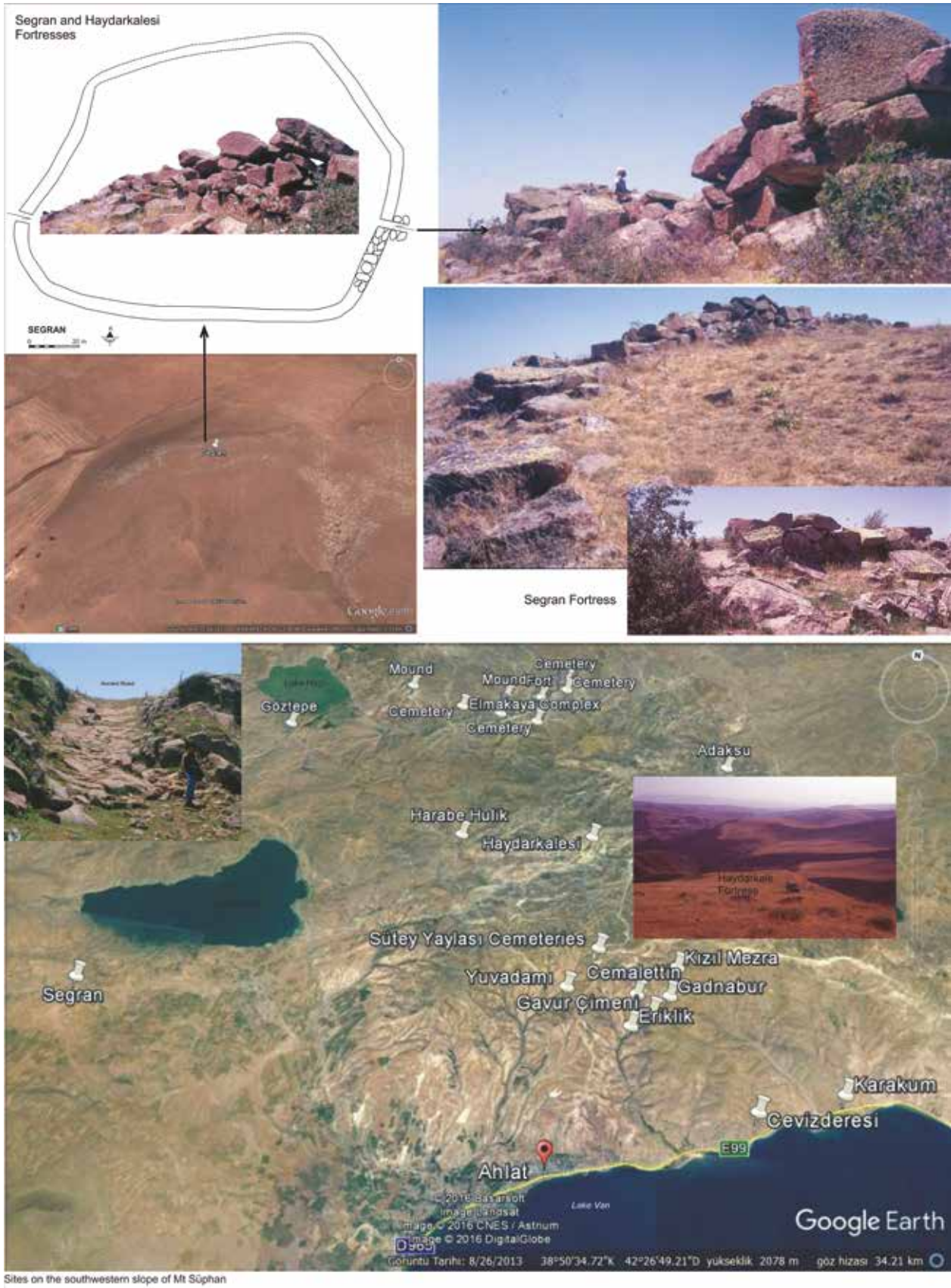


Figure 13: Segrans and Haydarkalesi Fortresses; Sites on the Southwestern Side of Mt Süphan / *Segrans ve Haydarkalesi Kaleleri; Süphan Dağı Güneybatı Etek Yerleşimleri*

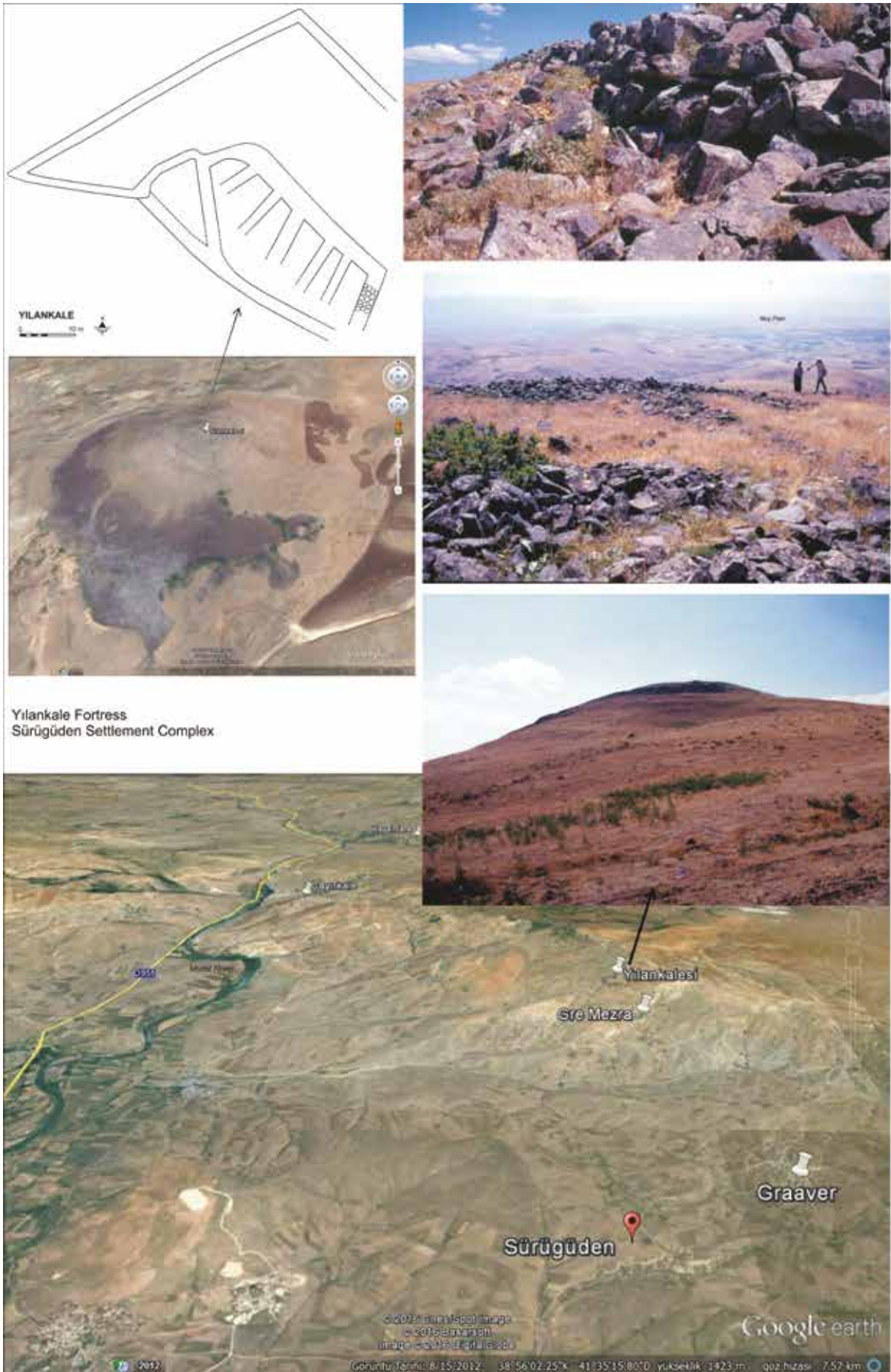


Figure 14: Yılkale Fortress-Sürügüden Settlement Complex / Yılkale Kalesi-Sürügüden Yerleşim Kompleksi

Yılankale situated at the Sarıdal Yaylası, the highest point in a place overlooking both Muş Plain and the entire Murat Valley that reaches to the plain from the north. It stands on a rocky cliff; a rectangular plan of its 80 x 65 m. part can be traced (Fig. 14). Its fortification walls, built with unworked stones, are 2 meters thick, although plans of the walls towards east cannot be determined. Towards the west, there are walls on a terrace. There are rooms inside the fortification walls; of these the rectangular ones, which were built towards south-west, adjacent to the fortification wall were determined. The fortress was shaped by the topography rather than a systematic plan. Some MBA and many LBA-EIA-MIA pottery were found. The other two sites in Sürügüden Complex, Graaver and Gre Mezra are located on the road to the Yılankale fortress from the Muş plain. LBA-EIA-MIA potsherds were recovered with the same group of Yılankale.

Fortresses-cemeteries of Elmakaya settlement complex which are next to each other revealed MBA-LBA-EIA pottery and a lesser amount of MIA¹⁶. We haven't encountered distinctive architectural evidence in Gürgüre and Çaygeldi fortresses (Figs. 2-3). Since these fortresses are located together with the cemeteries and due to their undefined architecture, it is harder to distinguish their date. Secondly, their size is problematic when the expanse of cemeteries and the density of the finds are considered.

Sütey Yaylası Cemeteries, dating to EBA-MIA, have been recovered in pottery of Yuvadamlı EBA-MIA, Kızıllı Mezra-Uludere MIA, Gadnabur MIA, Gavur Çimeni MIA (Figs. 8; 13)¹⁷.

The most difficult problem concerning the cemeteries yielding MBA-MIA material is to understand the architectural distinction between them (see MBA cemeteries).

The most striking features of the LBA-EIA fortresses are cyclopean or unworked stone masonry, irregular plan, which depended on topography, being placed on the high hill and inaccessibility. Haydarkale and Yılankale differs from the other highland fortresses with their long timespan in such a high altitude, as being situated on very high and steep rocky hills and with the density of pottery. Haydarkale located on the pastureland-Sütey Yaylası and ancient road between the Lake Van and Murat-Euphrates Valley (Bulanık-Malazgirt plains). Yılankale was on the way of pastureland-Sarıdal Yaylası which lies towards northern part of Muş Plain and at the point where the entire Muş Plain and Murat Valley are dominant.

Pottery of the region in the LBA-EIA were seen from Van Basin tradition¹⁸, even though there are some variations and special groups collected from some of the sites. It seems that the pottery of LBA is represented by polychrome painted ware which is late phase of the 'Araxes painted ware'. Composition of late phase of polychrome painted ware and EIA shapes occur together within early phase of LBA-EIA in the Van Basin. EIA pottery is quite different from the Araxes painted ware. One of the most obvious changes in the region in the EIA is reflected in the pottery of the eastern Anatolia. The pottery tradition of the EIA, in the western and northern sides of Lake Van which is extensively used in the region during the MIA-Urartu, is monochrome with variations of red-brown ware that has a homogeneous character. Red-brown ware is mainly found in the north and west of the basin (Figs. 7; 12; 15: 10-23; 16). Indeed, to discriminate, no stratigraphic evidence from mounds or fortresses were found. Therefore, it is difficult to distinguish between the red-brown ware of EIA and MIA other than through some forms and decorations.

Red-brown ware has also chaff faced ware group. Red-brown (Fig. 17: 3-29) and cream (Fig. 17: 1-2) chaff faced wares do not occur in the rest of Lake Van Basin; they are found extensively in Sürügüden Complex. Close similarities of red-brown chaff faced ware with incised decoration, unburnished or slightly burnished are found mainly in the eastern part of Upper Euphrates Valley-Mt Bingöl which date to MIA-Urartu¹⁹. Another group of chaff faced is burnished, cream chaff faced, and some of the red-brown chaff faced with burnished also have close similarities to those of LBA levels of Upper Tigris²⁰. Pinkish-buff ware (Figs. 6: 5-7; 11: 13-15) and red slipped ware which are quite a lot in the eastern shore of lake in EIA, are a few in the western and northern parts. Black burnished ware is a few which is a unique group for the region. (Figs. 6: 8-14; 15: 6-9).

CONCLUSION

Investigations on Muş Plains-Mt Süphan Muş Plains-Mt Süphan shows that there was a change of settlement system of lowlands and highlands between periods. Mounds which were intensively settled during the EBA-Kura-Araxes and MIA-Urartu in Murat Valley-Muş Plains²¹. This space suggests that the fertile lands, agricultural valleys or lowlands were not densely

¹⁶ Özfiat 1999.

¹⁷ Özfiat 1999.

¹⁸ Sevin 1996; Özfiat 1999; Özfiat 2005; Özfiat (In press a).

¹⁹ Sevin 1986; Sevin 1987; Sevin 1989.

²⁰ Özfiat 2005b.

²¹ Burney 1958; Russell 1980; Kozbe 1995; Rothman / Kozbe 1997; Rothman 2000; Rothman 2003; Rothman 2004; Biber / Çavuşoğlu 2013; Biber 2016.

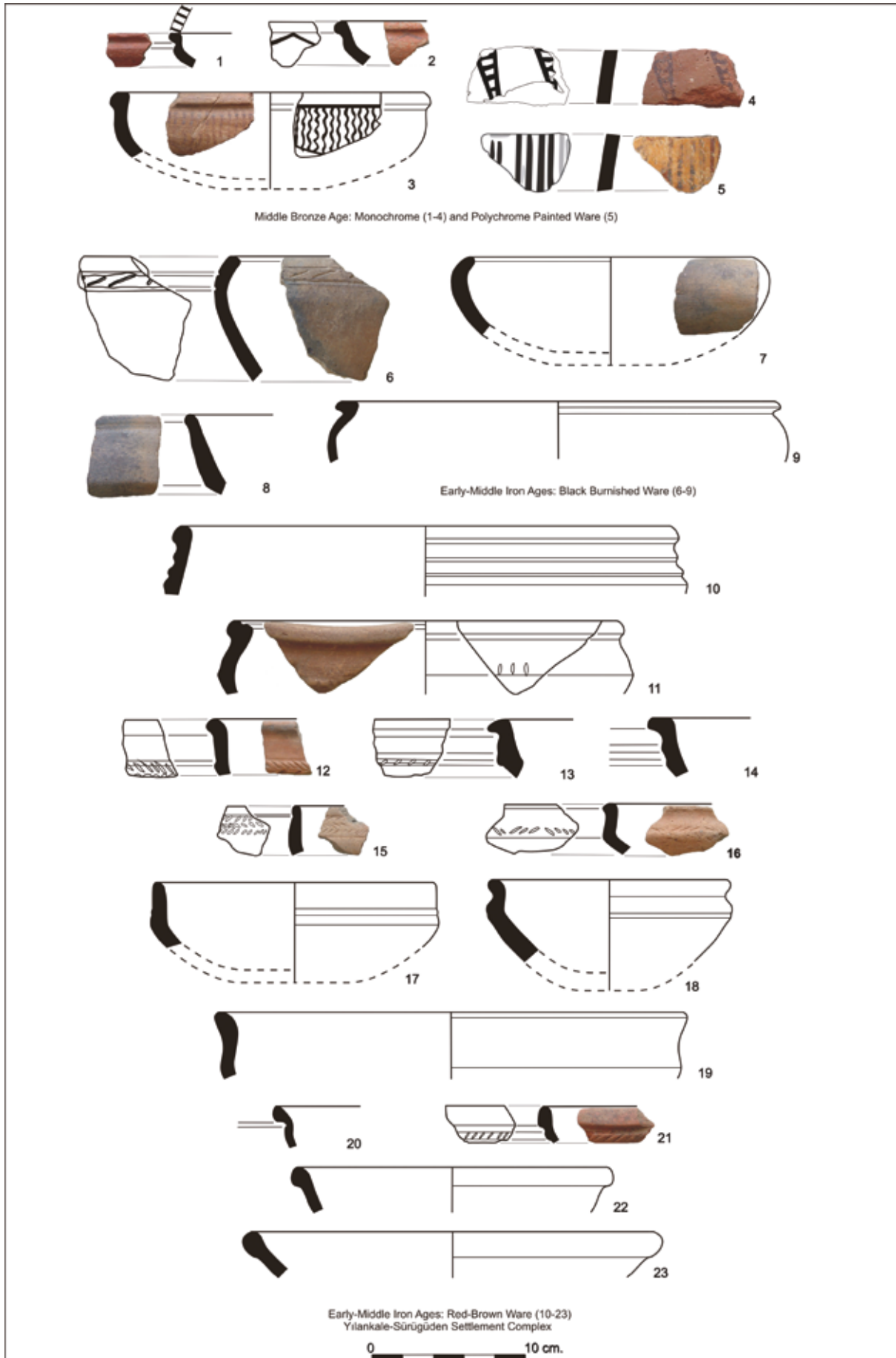


Figure 15: Yılkale Fortress-Sürügüden Settlement Complex / Yılkale Kalesi-Sürügüden Yerleşim Kompleksi

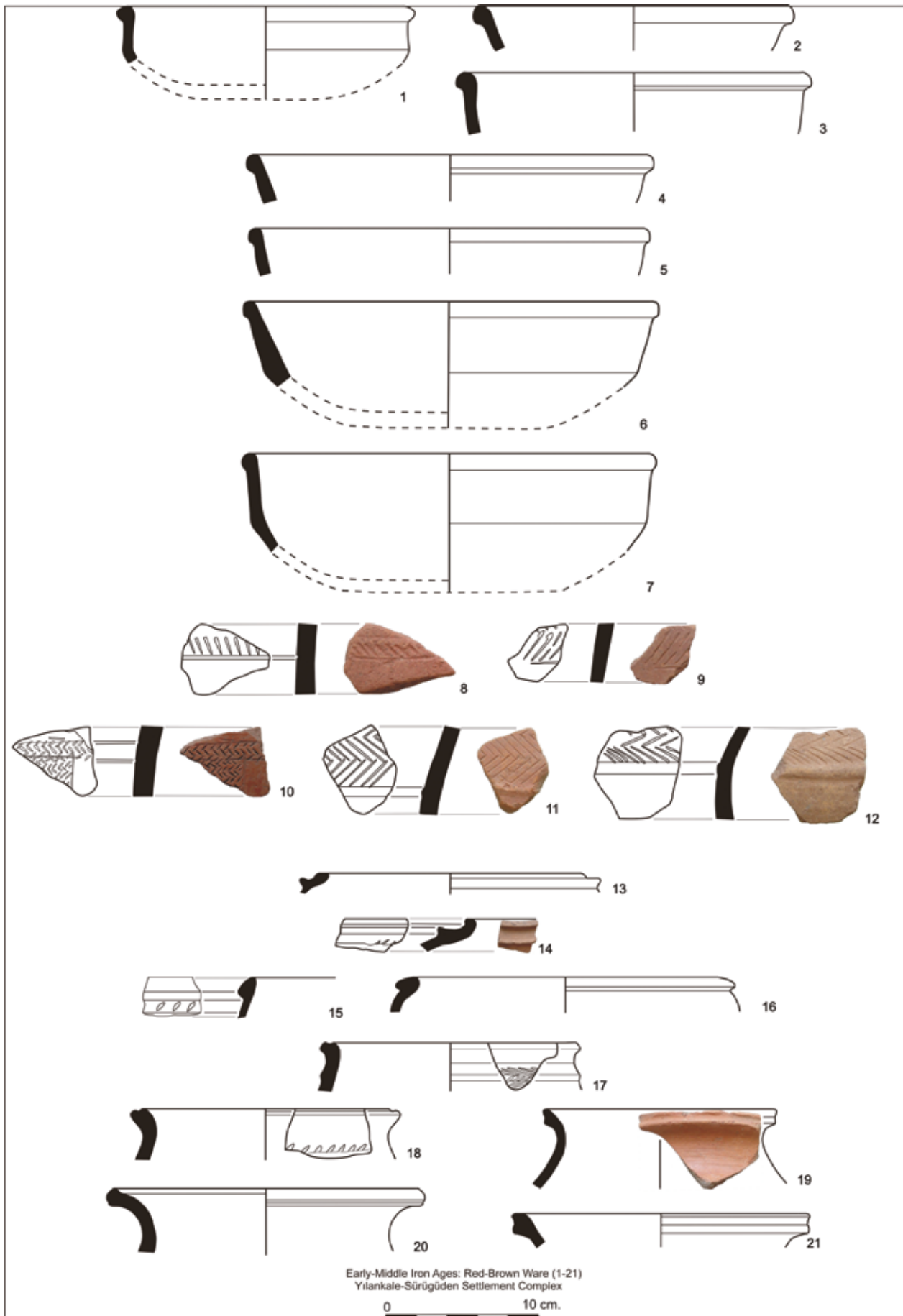


Figure 16: Yılankale Fortress-Sürügüden Settlement Complex / Yılankale Kalesi-Sürügüden Yerleşim Kompleksi

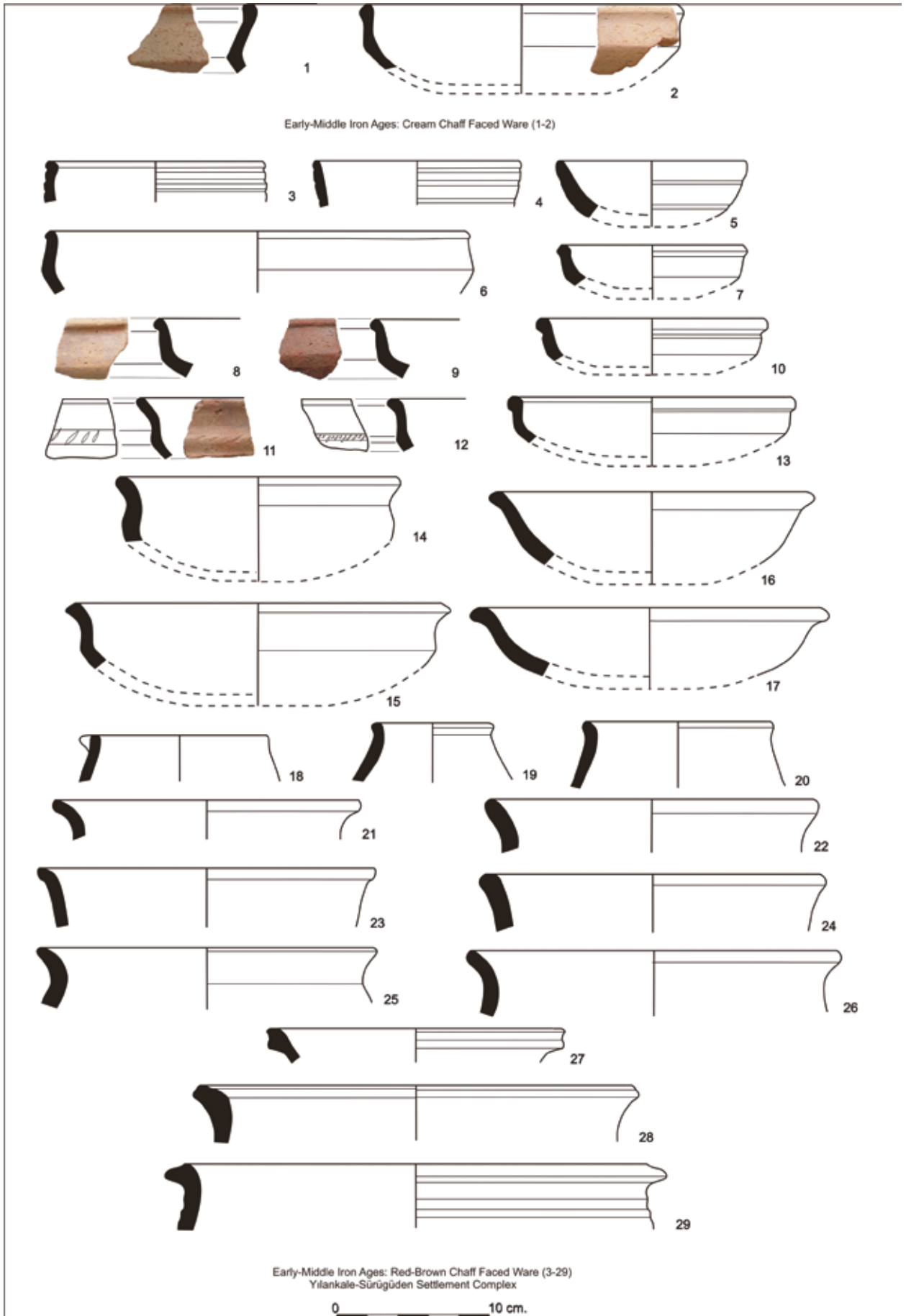


Figure 17: Yılankale Fortress-Sürügüden Settlement Complex / Yılankale Kalesi-Sürügüden Yerleşim Kompleksi

populated in the MBA-EIA. On the contrary, the cemeteries of MBA, found widespread on the highlands of Mt Süphan, imply the existence of a considerable population. LBA-EIA of the region were characterized by a great number of fortresses-cemeteries, located in the foothills and highlands²². A clear change in the settlement pattern appears throughout the region after the EBA-Kura-Araxes, as sedentary life seems to be abandoned until the MIA-Urartu.

Apparently, a dramatic decrease in the number of settlements can be stated in the Highland of eastern Anatolia, Iranian Azerbaijan and southern Transcaucasia in the MBA, except for some settlements in the Araxes Valley and western of Lake Urmia²³. The existence of large cemeteries in high pastures, while at the same time no related settlements, is observed. Western slope of Mt Süphan is also characterized by cemeteries; this point suggest to the presence of a different social organization to nomadism or semi-nomadism with seasonal settling, probably for animal husbandry. Transhumance and nomadism, which were part of pastoral life, might have been effective in the region, as it was in entire highland of eastern Anatolia. Even though the MBA pottery is found in Yılankale (Sürügüden Complex) and Haydarkalesi-Develik fortresses, these are limited to a couple of sherds. Actually, a great number of LBA-EIA and a lesser number of MIA pottery were collected from these fortresses. Additionally, their localization and architecture are typical to LBA-EIA. The presence of MBA pottery, though in small numbers, points out that these fortresses, with a weaker architecture, might have been used in MBA or there was a small permanent or temporary settlement. It is hard to reach a clear conclusion as the evidence is inadequate but, it is certain that there were no permanent and large settlements compared to the MBA cemeteries with enormous sizes where we have investigated.

Settlement pattern again changed in LBA-EIA, while the pastoral system was still used as shown by the highland fortresses-cemeteries. The increase in the number of fortresses from the LBA-EIA is striking in the whole region as in Iranian Azerbaijan and southern Transcaucasia. Fortresses and their cemeteries lie on the foothills surrounding the plains-valleys and highlands with a few exceptions, such as cemeteries of Evdi Tepe-Ernis (Ünseli, N71/1)²⁴ on the northern shore

of Lake Van and Karagündüz²⁵ on the eastern shore of Lake Erçek (Fig. 1). It seems that population slowly began to gather around organizational and economic centers with the rise of the fortresses, in contrast with MBA²⁶. Highlands of eastern Anatolia, northwestern southern Transcaucasia and northwestern Iran and northwestern Iran were divided among a great number of local polities in the LBA-EIA. Assyrian and Urartian epigraphic sources give information about these local polities of highland starting from 13th century BC, which are mentioned under the names of Uruatri and Nairi lands. In general, this vast area which is the pre-Urartian landscape, appears to have shared a common culture and by numerous polities, which could be named as fortress-state, small kingdom, chieftdom or regional confederacies in tribal structure. Political intensification of these highland state formation marked by the appearance of local states centered in fortresses or fortress-settlements with urban character, which are mainly part of settlement complexes. These central or major fortresses were also formed with some permanent and seasonal settlements and smaller fortresses in various size and function around them. Later, these local polities or local fortress-states of EIA became provinces of Urartian state.

Settlement pattern of the basin of Lake Van clearly reached to an incredible density during the EIA-MIA, is unmatched in both earlier and later periods. Remains dating to these periods have been seen in almost all sites. Rocky hills on foothills or highlands have clearly played a special role in the construction of landscape at that time. No other period, as perceived through the settlement pattern, produces the same impression of territory planning and control. EIA-MIA sites generally consist of a fortress flanked by cemeteries on their slopes: the construction technique of the fortresses and the graves, together with the material collected, share strong similarities, except for the built by Urartian Kingdom. Many Iron Age fortresses with the local characteristics have the finds from EIA and MIA. In these fortresses-cemeteries located in highlands, which were understood to be used extensively by pre-Urartian polities, MIA pottery were seen, though smaller in numbers compared to the EIA. It seems that, some of the local fortresses and seasonal settlements have been used in MIA-Urartu. Within these fortresses, Tıkızlı (L66/1), which stands to the northwest part of Murat Valley, even though its location in the highland and its distance to the main routes, is important with small number of Urartian pottery (Fig. 1)²⁷.

²² Özfirat 2009; Özfirat 2013; Özfirat 2014a; Özfirat 2014b; Özfirat 2015; Özfirat 2016; Özfirat (In press b); Sevin 2003; Sevin 2004; Sevin 2014; Belli / Konyar 2003; Ceylan 2008; 2015; Biber 2013; Biber 2016.

²³ Özfirat 2001a; Özfirat 2005a; Özfirat 2008.

²⁴ Sevin 1996; Sevin 2014.

²⁵ Sevin 2003; Sevin 2004; Sevin/Kavaklı 1996.

²⁶ Özfirat 2001a; Özfirat 2005a; Sevin 2003; Sevin 2004; Sevin 2014.

²⁷ Koçhan 1990; Özfirat 2001b; Biber 2015.

In Urartian period (MIA), every type of terrain was used and settlements with various functions were systematically arranged: valleys and plains in the lowlands, pasturelands, mountain slopes and highlands. Settlement pattern have been developed and centralized to characterize that of the Urartian state. Urartian constructions were built on a strategic location in the lower areas compared to EIA. Fortresses, roadstations and settlements in various functions were built on a lower hill stretching on the plains, valleys or at the shore of lake, except for the thick Urartian layers of mounds.

Classical Urartian architecture and pottery were found in a small number of fortresses in the western side of Mt Süphan and Mt Nemrut (Fig 1): Fortresses of Yeniköy-Alyar²⁸ (L67/5), Bostankaya²⁹ (M67/5) and Dereboğazi-Hasretpınar (N6673)³⁰ in the Murat Valley-Malazgirt Plain; Urartian chamber grave in Göztepe Mound which is in the Bulanık Plain next to Elmakaya Complex (Fig. 2)³¹; Şahmiran Fortress³² in the Murat Valley-Bulanık Plain; Kayalıdere-Varto³³ to the west on the Murat River with a strategic location overlooking to Muş Plain; Kepenek³⁴ located on a hill overlooking to Muş Plain-Karasu Valley; Tatvan (066/2)³⁵, Ağak Burnu-Adabağ (066/1)³⁶, Cevizderesi-Uludere (N66/5)³⁷ and Arınçküs-Akçıra (N69/6)³⁸ fortresses are located on the shore of lake. Kef-Adilcevaz Fortress is an extraordinary site with its very high location on southeastern slope of Mt Süphan, which is overlooking to Lake Van. It differs from the other Urartian settlements with the sanctuary of Haldi built by King Rusa II.

Fortresses, large cemeteries and settlement complexes of Mt Süphan are the most prominent archaeological sites for MBA-LBA-EIA in the region. It seems that highlands, which had been very limitedly used in EBA-Kura Araxes, were highly densely populated in MBA. Even though the pastoral life continued in LBA-EIA, a more organized social set up and socioeconomic structure were evidenced by many fortresses on foothills and high plateaus. The existence of the

remarkable sites of Mt Süphan highland can be explained with their most fertile pastures of the region and with their being surrounded by the large Murat-Euphrates River, which is one of the greatest river of the eastern Anatolia.

ACKNOWLEDGEMENTS

We would like here to thank warmly the Turkish Ministry of Culture and Tourism, General Directorate for Monuments and Museums for giving permission and support to work on these projects. Our special thanks also go to Prof. Dr Veli Sevin for his kindly help. The survey was conducted in 1995–1999 and 2002–2011 in the basin of Lake Van, under my direction. Thanks to all the team member and Van Museum. Survey is also supported by University of İstanbul (624/150794, T-229/260696, 1092/010598), TÜBİTAK (The Scientific and Technical Research Council of Turkey (SBB-CNRS-2011, SBB-107K153, SBB-105K063), University of Yüzüncü Yıl-Van (2002-FED-093), University of Mustafa Kemal (1101M0115/158) and the Turkish Historical Society projects.

²⁸ Koçhan 1990; Çevik 2000; Özfirat 2001b; Biber 2015.

²⁹ Burney 1957; Russell 1980; Rothman 1995; Özfirat 2001b, Biber 2015.

³⁰ Özfirat 2001b; Biber / Çavuşoğlu / Erdoğan 2012.

³¹ Özfirat 2001b.

³² Biber 2013; Biber 2015 .

³³ Burney 1966.

³⁴ Koçhan/Sur 2003; Koçhan/Salvini 2000; Biber 2016.

³⁵ Burney 1957; Russell 1980; Erzen / Bilgiç / Boysal / Ögün 1960; Özfirat 2002.

³⁶ Burney 1957 (Burun Harabesi); Russell 1980 (Burun Harabesi); Özfirat 1999.

³⁷ Özfirat 2002.

³⁸ Burney 1957; Russell 1980; Bilgiç 1984; Özfirat 1999.

KAYNAKÇA

BELLİ, O./KONYAR, E. 2003

Doğu Anadolu Bölgesinde Erken Demir Çağı Kale ve Nekropoller-Early Iron Age Fortresses and Necropolises in East Anatolia, Arkeoloji ve Sanat Yayınları, İstanbul.

BİBER, H. 2013

“Muş-Bulanık’ta Demir Çağ Merkezleri”, Tarhan Armağanı: M. Taner Tarhan’a Sunulan Makaleler, (Eds. O. Tekin, M. H. Sayar, E. Konyar), Ege Yayınları, İstanbul: 79-100.

BİBER, H. 2015

“Bulanık ve Malazgirt’teki Bazı Demir Çağ Kaleleri ve Arzaşkun’un Yeri Sorunu”, International Symposium on East Anatolia-South Caucasus Cultures Proceedings II / Uluslararası Doğu Anadolu-Güney Kafkasya Kùltürleri Sempozyumu Bildiriler II (Erzurum 10-13 October 2012), (Eds. M. Işıklı, B. Can), Cambridge Scholars Publishing- Newcastle upon Tyne: 171-182.

BİBER, H. 2016

“2012 ve 2014 Yılları Muş İli Arkeolojik Yüzey Araştırması”, 33. Araştırma Sonuçları Toplantısı 2 (Erzurum 11-15 Mayıs 2015), T.C. Kültür ve Turizm Bakanlığı, Kültür Varlıkları ve Müzeler Genel Müdürlüğü, Ankara: 323-334.

BİBER, H./ÇAVUŞOĞLU, R. 2011

“Muş İli ve İlçeleri 2009 Yılı Arkeolojik Yüzey Araştırması (Demir Çağları)”, 28. Araştırma Sonuçları Toplantısı 2 (İstanbul 24-28 Mayıs 2010), T.C. Kültür ve Turizm Bakanlığı, Kültür Varlıkları ve Müzeler Genel Müdürlüğü, Ankara: 201-224.

BİBER, H./ÇAVUŞOĞLU, R./ERDOĞAN, S. 2012

“Muş İli ve İlçeleri Arkeolojik Yüzey Araştırması (Demir Çağları) 2010 Yılı Araştırmaları: Bulanık-Malazgirt”, 29. Araştırma Sonuçları Toplantısı 3 (Malatya 23-28 Mayıs 2011), T.C. Kültür ve Turizm Bakanlığı, Kültür Varlıkları ve Müzeler Genel Müdürlüğü, Ankara: 373-402.

BİBER, H./ÇAVUŞOĞLU, R. 2013

“2011 Yılı Muş-Malazgirt Arkeolojik Yüzey Araştırması”, 30. Araştırma Sonuçları Toplantısı 2 (Çorum 28 Mayıs-1 Haziran 2012), T.C. Kültür ve Turizm Bakanlığı, Kültür Varlıkları ve Müzeler Genel Müdürlüğü, Çorum: 303-320.

BİLGİÇ, H. 1984

“Urartular”, Türk Ansiklopedisi XXXIII: 40-41.

BURNEY, Ch. A. 1957

“Urartian Fortresses and Towns in the Van Region”, Anatolian Studies VII: 37-53

BURNEY, Ch. A. 1958

“Eastern Anatolia in the Chalcolithic and Early Bronze”, Anatolian Studies VIII: 157-209.

BURNEY, Ch. A. 1966

“A First Season of Excavations at the Urartian Citadel of Kayalidere”, Anatolian Studies XVI: 55-111

CEYLAN, A. 2008

Doğu Anadolu Araştırmaları I (Erzincan-Erzurum-Kars-Iğdır, 1998-2008), Eser Ofset Matbaacılık, Güneş Vakfı Yayınları, Erzurum.

CEYLAN, A. 2015

Doğu Anadolu Araştırmaları II (Erzincan-Erzurum-Kars-Iğdır, 2009-2014), sm[art] Ajans&Organizasyon, Atatürk Üniversitesi Yayınları 1107, Erzurum.

ÇEVİK, N. 2000

Urartu kaya Mezarları ve Ölü Gömme Gelenekleri, Türk Tarih Kurumu Yayınları, Ankara.

ERZEN, A./BİLGİÇ, E./BOYSAL, Y./B. ÖĞÜN, B. 1960

“1959 Van-Toprakkale Sondajları ve Bölgedeki Çalışmalar”, Türk Arkeoloji Dergisi X/2: 5-22.

KOÇHAN, N. 1990

“Malazgirt-Tıkızlı Kalesi”, Ege Üniversitesi, Arkeoloji-Sanat Tarihi Dergisi V: 87-108.

KOÇHAN, N./SUR, C. 2003

“Muş-Kepenek Urartu Kalesi”, Atatürk Üniversitesi, Güzel Sanatlar Enstitüsü Dergisi 10: 57-64.

KOÇHAN, N./SALVİNİ, M. 2000

“A New Urartian Inscription from the Neighbourhood of Muş”, Studi Micenei ed Egeo Anatolici XLII/2: 303-305.

KOZBE, G. 1995

“Muş Ovası yüzey Araştırmalarında Ele Geçen Erken Transkafkasya Çanak Çömleği Işığında Bölgenin Erken Tunç Çağı’nın Yeniden Değerlendirmesi”, Ege Üniversitesi, Arkeoloji Dergisi III: 35-50.

MARRO, C./ÖZFIRAT, A. 2004

“Pre-classical Survey in Eastern Turkey, Second Preliminary Report: The Erciş Region”, *Anatolia Antiqua* XII: 227-265.

ÖZFIRAT, A. 1994

“MÖ II. Binyılda Doğu Anadolu Boyalı Seramik Kültürleri Üzerine Araştırmalar”, XI. Araştırma Sonuçları Toplantısı (Ankara 24-28 Mayıs 1993), T.C. Kültür ve Turizm Bakanlığı, Kültür Varlıkları ve Müzeler Genel Müdürlüğü, Ankara: 359-377.

ÖZFIRAT, A. 1999

“1997 Yılı Bitlis-Muş Yüzey Araştırması: Tunç ve Demir Çağları”, XVI. Araştırma Sonuçları Toplantısı II (Tarsus 25-29 Mayıs 1998), T.C. Kültür ve Turizm Bakanlığı, Kültür Varlıkları ve Müzeler Genel Müdürlüğü, Ankara: 1-22.

ÖZFIRAT, A. 2000

“1998 Yılı Bitlis-Muş İlleri Yüzey Araştırması: Tunç ve Demir Çağları”, 17. Araştırma Sonuçları Toplantısı 2 (Ankara 24-28 Mayıs 1999), T.C. Kültür ve Turizm Bakanlığı, Kültür Varlıkları ve Müzeler Genel Müdürlüğü, Ankara: 193-210.

ÖZFIRAT, A. 2001a

Doğu Anadolu Yayla Kültürleri (MÖ II. Binyıl), (With summary in English), Arkeoloji ve Sanat Yayınları, İstanbul.

ÖZFIRAT, A. 2001b

“1999 Yılı Muş İli Yüzey Araştırması: Tunç ve Demir Çağları”, 18. Araştırma Sonuçları Toplantısı 2 (İzmir 22-26 Mayıs 2000), T.C. Kültür ve Turizm Bakanlığı, Kültür Varlıkları ve Müzeler Genel Müdürlüğü, Ankara: 123-140.

ÖZFIRAT, A. 2002

“Van Gölü’nün Batı Kıyısında İki Urartu Merkezi”, *Arkeoloji ve Sanat* 108: 21-26.

ÖZFIRAT, A. 2005a

“Transhumance on the Eastern Anatolian High Plateau in the second millennium BC”, *Mountains and Valleys: A Symposium on Highland-Lowland interaction in the Bronze Age settlement systems in Eastern Anatolia, Transcaucasia and Northwestern Iran* (Van 09-13 August 2004), (Eds. B. Helwing, A. Özfirat), *Archäologische Mitteilungen aus Iran und Turan* 37, Deutsches Archäologisches Institut, Eurasien-Abteilung Außenstelle Teheran, Berlin: 139-152.

ÖZFIRAT, A. 2005b

Üçtepe II, Tunç Çağları: Kazı ve Yüzey Araştırması Işığında, (With summary in English), Ege Yayınları, İstanbul.

ÖZFIRAT, A. 2008

“The Highland Plateau of Eastern Anatolia in the Second Millenium BCE: Middle/Late Bronze Ages”, *Ceramics in Transitions: Chalcolithic Through Iron Age in the Highlands*, *Proceedings of the Workshop on Ancient Ceramics from the Southern Caucasus and Adjacent Areas* (New York 1-5 December 2003), (Eds. K. S. Robinson, A. Sagona), *Ancient Near East Studies Supplement* 27, Peeters Press, Leuven-Paris-Dudley MA: 101-122.

ÖZFIRAT, A. 2009

“Van Gölü Havzası Yüzey Araştırması: Patnos Ovası Demir Çağ Yerleşimleri”, Altan Çilingiroğlu’na Armağan: Yukarı Deniz’in Kıyısında Urartu Krallığı’na Adanmış Bir Hayat - *Studies in Honour of Altan Çilingiroğlu: A Life Dedicated to Urartu on the Shores of the Upper Sea*, (Eds. H. Sağlamtimur, E. Abay et al.), *Arkeoloji ve Sanat Yayınları*, İstanbul: 455-478.

ÖZFIRAT, A. 2013

“Survey on the settlements of Late Bronze Age/Early Iron Age in the north shore of Lake Van Basin”, *Austausch und Kulturkontakt im Südkaukasus und Seinen Angrenzenden Regionen Spätbronze-Früheisenzeit*, (Eds. A. Mehnert, G. Mehnert, S. Reinhold), *Martin-Luther Universität Halle-Wittenberg, Zentrums für Archäologie und Kulturgeschichte des Schwarzmeerraumes* 22, Beier & Beran Verlag, Langenweißbach: 237-249.

ÖZFIRAT, A. 2014a

“Ağrı Dağı ve Van Gölü Havzası Yüzey Araştırması, (Muş-Bitlis-Van-Ağrı-Iğdır İlleri ve İlçeleri)”, Mustafa Kemal Üniversitesi, Fen-Edebiyat Fakültesi, Arkeoloji Bölümü Kazı ve Araştırma Projeleri, (Eds. A. Özfirat, N. Coşkun), *Mustafa Kemal Üniversitesi Yayınları* 51, Antakya: 17-43.

ÖZFIRAT, A. 2014b

“Bozkurt Kurgan Mezarlığı Kazısı”, Mustafa Kemal Üniversitesi, Fen-Edebiyat Fakültesi, Arkeoloji Bölümü Kazı ve Araştırma Projeleri, (Eds. A. Özfirat, N. Coşkun), *Mustafa Kemal Üniversitesi Yayınları* 51, Antakya: 17-43.

ÖZFIRAT, A. 2015

“Investigations in the Çaldıran Plain-Van Lake Basin:

During the Middle Iron Age”, Proceedings of 15th Symposium on Mediterranean Archaeology (SOMA), held at the University of Catania 3-5 March 2011, Volume I, (Eds. P. M. Militello, H. Öñiz), BAR International Series 2695 (I), Oxford: 71-79.

ÖZFIRAT, A. 2016

Özfirat, A., “The Late Bronze-Early Iron Age-Urartu Complex at Bozkurt on the Southern Slope of Mt. Ağrı”, At the Northern Frontier of Near Eastern Archaeology: Recent Research on Caucasia and Anatolia in the Bronze Age-Proceedings of the international Humboldt-Kolleg (Venice 9th- January 12th, 2013), (Eds. E. Rova, M. Tonussi), Subartu XXXVIII, Brepols Publishers, Turnhout: 299-310.

ÖZFIRAT, A. (In Press a)

“Nairi Ware: Late Bronze-Early Iron Age Pottery Tradition in the Van Lake Basin”, Context and Connection: Essays on the Archaeology of the Ancient Near East in Honour of Antonio Sagona, (Eds. A. Batmaz, G. Bédianashvili, A. Michalewicz, A. Robinson), *Orientalia Lovaniensia Analecta*, Peeters.

ÖZFIRAT, A. (In Press b)

“Early Iron Age-Nairi Kingdom Eriqua and Urartian Province Minuahnili on the Northern Slope of Mt Ağrı (Settlement Complexes at Melekli and Karakoyunlu)”, *Festschrift Honoring Professor Dr. Gregory Areshian, Supplement Series of the Journal Armenian Journal of Near Eastern Studies (Aramazd)*.

ROTHMAN, M. S. 1993

“Preliminary Report on the Archaeological Survey in the Alpaslan Dam Reservoir Area and Muş Plain 1991”, X. Araştırma Sonuçları Toplantısı (Ankara 25-29 Mayıs 1992), T.C. Kültür ve Turizm Bakanlığı, Kültür Varlıkları ve Müzeler Genel Müdürlüğü, Ankara: 269-296.

ROTHMAN, M. S. 1995

“The Pottery of the Muş Plain and the Evolving Place of a High Border Land – Doğu Anadolu Muş Plato Yöresi Çerçevesinde Muş Ovası Seramiği”, XII. Araştırma Sonuçları Toplantısı (30 Mayıs-03 Haziran 1994), T.C. Kültür ve Turizm Bakanlığı, Kültür Varlıkları ve Müzeler Genel Müdürlüğü, Ankara: 281-304.

ROTHMAN, M. S. 2000

“Ripples in the Stream: Transcaucasia-Anatolian Interaction the Murat-Euphrates Basin at the Beginning of the Third Millenium BC”, *The Archaeology of Jordan and Beyond - Essays in Honor of James A. Sauer*, (Eds.

L. E. Stager, J. E. Greene, M. D. Coogan), Eisenbrauns, Winona Lake-Indiana: 429-443.

ROTHMAN, M. S. 2003

“Ripples in the Stream: Transcaucasia-Anatolian Interaction the Murat-Euphrates Basin at the Beginning of the Third Millenium BC”, *Archaeology in the Borderlands: Investigations in Caucasia and Beyond*, (Eds. A. T. Smith, K. Rubinson), The Cotsen Institute of Archaeology, University of California, Monograph 47, Los Angeles: 94-114.

ROTHMAN, M. S. 2004

“Beyond the Frontiers: Muş in the Late Bronze to Roman Periods”, *A View From the Highlands: Archaeological Studies in Honour of Charles Burney*, (Ed. A. Sagona), *Ancient Near East Studies Supplement 12*, Peeters Press, Herent: 121-178.

ROTHMAN, M. S./G. KOZBE, G. 1997

“Muş in the Early Bronze Age”, *Anatolian Studies XLVII*: 105-126.

RUSSELL, H. F. 1980

Pre Classical Pottery of Eastern Anatolia: Based on a Survey by Charles Burney of sites along the Euphrates and around Lake Van, British Archaeological Reports, International Series 85, Oxford.

SARAÇOĞLU, H. 1989

Doğu Anadolu Bölgesi, Milli Eğitim Bakanlığı Yayınları 176, İstanbul.

SEVİN, V. 1986

“Malatya-Elazığ-Bingöl İlleri Yüzey Araştırması, 1985”, IV. Araştırma Sonuçları Toplantısı (Ankara 26-30 Mayıs 1986), T.C. Kültür ve Turizm Bakanlığı, Kültür Varlıkları ve Müzeler Genel Müdürlüğü, Ankara: 279-300.

SEVİN, V. 1987

“Elazığ-Bingöl İlleri Yüzey Araştırması, 1986”, V. Araştırma Sonuçları Toplantısı II, (Ankara 6-10 Nisan 1987), T.C. Kültür ve Turizm Bakanlığı, Kültür Varlıkları ve Müzeler Genel Müdürlüğü, Ankara: 1-44.

SEVİN, V. 1989

“Elazığ-Bingöl Yüzey Araştırması, 1987”, VI. Araştırma Sonuçları Toplantısı, (Ankara 6-10 Nisan 1988), T.C. Kültür ve Turizm Bakanlığı, Kültür Varlıkları ve Müzeler Genel Müdürlüğü, Ankara: 451-500.

SEVİN, V. 1996

“Van/Ernis (Ünseli) Nekropolü Erken Demir Çağ Çanak Çömlekleri”, Anadolu Araştırmaları: Prof. Dr. Afif Erzen’e Armağan XIV, İstanbul: 439-467.

SEVİN, V. 1999

“The origins of the Urartians in the light of the Van/Karagündüz excavations”, Anatolian Iron Ages 4: The Proceedings of the Fourth Anatolian Iron Ages Colloquium held at Mersin, 19–23 May 1997, (Eds. A. Çilingiroğlu, R. J. Matthews), British Institute of Archaeology at Ankara, London: 159–164.

SEVİN, V. 2003

“The Early Iron Age in the Van Region”, Archaeology in the Borderlands: Investigations in Caucasia and Beyond, (Eds. A. T. Smith, K. Rubinson), The Cotsen Institute of Archaeology, University of California, Monograph 47, Los Angeles: 180-191.

SEVİN, V. 2004

“Pastoral Tribes and Early Settlements of the Van Region, Eastern Anatolia”, A View From the Highlands: Archaeological Studies in Honour of Charles Burney, (Ed. A. Sagona), Ancient Near East Studies Supplement 12, Peeters Press, Herent: 179-203.

SEVİN, V. 2005

“Son Tunç/Erken Demir Çağ Van Bölgesi Kronolojisi: Kökeni Aranan Bir Devlet-Urartu”, Belleten LXVIII/252: 355-400.

SEVİN, V. 2014

“Van/Ernis-Evditepe ve Alacahan Mezarlık ve Yerleşmeleri Hakkında Kimi Düşünceler. Demir Çağları Sorunu”, Armağan Erkanal’a Armağan: Anadolu Kültürlerine Bir Bakış-Compiled in Honor of Armağan Erkanal: Some Observations on Anatolia Cultures, (Ed. N. Çınardalı-Karaarslan), Hacettepe Üniversitesi Yayınları, Ankara: 355–368.

SEVİN, V./KAVAKLI, E. 1996

Bir Erken Demir Çağı Nekropolü - Van/Karagündüz - An Early Iron Age Cemetery, Arkeoloji ve Sanat Yayınları, İstanbul.