

# Effects of Glazing Procedures on the Color Stability of Conventional and CAD/CAM Hybrid Ceramics: A Comparative Study

*Glaze İşlemlerinin Konvansiyonel ve CAD/CAM Hibrit Seramiklerin Renk Stabilizasyonunun Üzerine Etkisi: Karşılaştırmalı Çalışma*

Özgün Yusuf Özyılmaz<sup>1</sup>, Gülsüm Sayın Özel<sup>2</sup>, Bebek Serra Oğuz Ahmet<sup>2</sup>

<sup>1</sup>Bezmialem Vakıf University Faculty of Dentistry, Department of Prosthodontic, İstanbul, Turkey

<sup>2</sup>İstanbul Medipol University Faculty of Dentistry, Department of Prosthodontic, İstanbul, Turkey



## Keywords

Ceramics, color stability, computer-aided design/computer-aided manufacturing, hybrid ceramic, nanoceramic

## Anahtar Kelimeler

Seramikler, renk stabilizasyonu, bilgisayar-destekli dizayn/bilgisayar- destekli üretim, hibrit seramik, nanoseramik

Received/Geliş Tarihi : 08.01.2019

Accepted/Kabul Tarihi : 29.01.2019

doi:10.4274/meandros.galenos.2019.49369

## Address for Correspondence/Yazışma Adresi:

Özgün Yusuf Özyılmaz PhD, DDS  
Bezmialem Vakıf University Faculty of Dentistry,  
Department of Prosthodontic, İstanbul, Turkey  
Phone : +90 532 280 05 32  
E-mail : ozyilmaz@bezmialem.edu.tr  
ORCID ID: orcid.org/0000-0003-4802-1604

©Meandros Medical and Dental Journal, Published by Galenos Publishing House.  
This is article distributed under the terms of the Creative Commons Attribution NonCommercial 4.0 International Licence (CC BY-NC 4.0).

## Abstract

**Objective:** Ceramic glazing and polishing are important for patient satisfaction and long-term clinical success. Till date, no study has compared color changes after glazing procedures between conventional and more recently introduced ceramics. In this study, we investigated the effects of glazing procedures on the color stability of conventional and computer-aided design/computer-aided manufacturing (CAD/CAM) hybrid ceramics using a spectrophotometer.

**Materials and Methods:** Eighty-four disc-shaped specimens were fabricated with seven different dental porcelain materials according to the manufacturers' instructions (n=12 each): Ivoclar IPS DSign, Vita Omega 900, Ceramco III, Vita Mark II, Vita Enamic, GC Cerasmart, and Vita Suprinity. Both sides of the specimens were polished with wet 600-, 1000-, and 1500-grit aluminium oxide abrasive papers, and color values (L\*, a\*, b\*) were measured using a spectrophotometer before and after glazing. Treatment-induced changes in the specimen color and topography were evaluated and recorded. The color change ( $\Delta E$ ) was calculated from the changes in the mean L\*, a\*, and b\* values. All data were analyzed using Kruskal-Wallis, Mann-Whitney U, and Wilcoxon tests (95% confidence interval).

**Results:** Color changes were below the clinically perceptible level ( $\Delta E$ , <3.7) in all specimens. Color change values after the glazing procedures were  $2.27 \pm 0.55$ ,  $2.99 \pm 0.67$ ,  $1.01 \pm 0.58$ ,  $1.62 \pm 0.70$ ,  $0.74 \pm 0.45$ ,  $1.35 \pm 0.52$ , and  $1.37 \pm 0.72$  for Ivoclar IPS DSign, Vita Omega 900, Ceramco III, Vita Mark II, GC Cerasmart, Vita Enamic, and Vita Suprinity, respectively; thus, there were significant differences between the conventional and CAD/CAM ceramics ( $p < 0.05$ ). The conventional ceramic Vita Omega 900 presented the least color stability, while the CAD/CAM ceramic GC Cerasmart presented the maximum color stability.

**Conclusion:** Glazing procedures do not cause evident changes in the color of conventional and CAD/CAM hybrid ceramics, although the color stability of the latter is better than that of the former.

## Öz

**Amaç:** Seramik glaze ve parlatma işlemleri hasta memnuniyeti ve uzun süreli klinik başarı için önemlidir. Bugüne kadar hiçbir çalışma, geleneksel ve daha yeni tanıtılan seramikler arasındaki glaze işlemlerinden sonra renk değişimlerini karşılaştırmamıştır. Bu çalışmada glaze prosedürlerinin bir spektrofotometre kullanarak geleneksel ve bilgisayar destekli tasarım/bilgisayar destekli üretim (CAD/CAM) hibrit seramiklerin renk stabilitesi üzerindeki etkilerini araştırılmıştır.

**Gereç ve Yöntemler:** Üretici firma talimatlarına göre seksen dört disk şeklindeki örnekten yedi farklı porselen malzemesi ile üretildi (n=12): Ivoclar IPS DSign, Vita Omega 900, Ceramco III, Vita Mark II, Vita Enamic, GC Cerasmart ve Vita Suprinity. Numunelerin her iki tarafı 600-, 1000- ve 1500-grit alüminyum oksit aşındırıcı kağıtlarla aşındırılmış ve glaze işleminden önce ve sonra bir spektrofotometre kullanılarak renk değerleri ( $L^*$ ,  $a^*$ ,  $b^*$ ) ölçülmüştür. Örneklerin rengindeki ve topografisindeki tedaviye bağlı değişiklikler değerlendirildi ve kaydedildi. Renk değişimi ( $\Delta E$ ), ortalama  $L^*$ ,  $a^*$  ve  $b^*$  değerlerindeki değişikliklerden hesaplandı. Tüm veriler Kruskal-Wallis, Mann-Whitney U ve Wilcoxon testleri kullanılarak analiz edildi (%95 güven aralığı).

**Bulgular:** Renk değişiklikleri tüm örneklerde klinik olarak algılanabilir seviyenin ( $\Delta E < 3,7$ ) altındaydı. Glaze işlemlerinden sonra renk değişimi değerleri sırasıyla Ivoclar IPS DSign, Vita Omega 900, Ceramco III, Vita Mark II, GC Cerasmart, Vita Enamic ve Vita Suprinity için  $2,27 \pm 0,55$ ,  $2,99 \pm 0,67$ ,  $1,01 \pm 0,58$ ,  $1,62 \pm 0,70$ ,  $0,74 \pm 0,45$ ,  $1,35 \pm 0,52$  ve  $1,37 \pm 0,72$  olarak bulundu; bu nedenle, konvansiyonel ve CAD/CAM seramikleri arasında önemli farklılıklar vardı ( $p < 0,05$ ). Geleneksel seramik Vita Omega 900 en düşük renk stabilitesini sunarken, CAD/CAM seramik GC Cerasmart maksimum renk stabilitesini sundu.

**Sonuç:** Glaze prosedürleri, konvansiyonel ve CAD/CAM hibrit seramiklerin renginde belirgin değişikliklere neden olmamakla birlikte, işlem sonrasının renk stabilitesi öncekinden daha iyidir.

## Introduction

The goal of ceramic restorations in the anterior dentition is to achieve acceptable esthetics by reproduction of the morphological, biological, and optical features of the lost tooth structure. Although several studies have demonstrated exceptional color stability for different ceramic systems, clinicians have reported difficulties in replication of the actual tooth color and shade matching with the surrounding dentition (1). Reproduction of the translucency and color of the natural teeth is one of the most important factors affecting the esthetic value of a dental ceramic restoration. The color of all-ceramic restorations is influenced by the type, thickness, surface texture, and shape of the ceramic material; number of firings; and firing temperatures (2). The elements of color, such as hue, value, and chroma; translucency and opacity; light transmission and scattering; and metamerism and fluorescence, are the main factors affecting the optical properties of a restoration. Among these, the "value" level is of paramount importance for achieving a vital, lifelike appearance that is in harmony with the surrounding dentition (3).

The Commission Internationale de l'Eclairage (CIE)  $L^*$ ,  $a^*$ ,  $b^*$  color space was defined by the International Commission on Illumination, and it expresses color as three numerical values, where  $L^*$  represents the lightness component and  $a^*$  and  $b^*$  represent the green-red and blue-yellow color components, respectively.  $\Delta E$  used to designate the color changes in

terms of these parameters (4). If the  $\Delta E$  value is  $>1$ , the color variation can be visually observed by 50% human observers, while a color difference represented by a  $\Delta E$  value of  $>2$  can be perceived by 100% observers (5). However, for oral restorations, a  $\Delta E$  value of  $\leq 3.7$  is clinically acceptable because of uncontrolled factors within and around the oral cavity. The  $L^*$  axis gives the coordinates of lightness and darkness, and these coordinates change between 0 (extremely dark) and 100 (extremely light). A decrease in the  $a^*$  value represents a decrease in redness, while a decrease in the  $b^*$  value represents a decrease in yellowness (6).

Of late, computer-aided design/computer-aided manufacturing (CAD/CAM) materials are being used for nearly all type of restorations because of advantages such as biocompatibility, durability, and esthetics; decreased chairside time; shorter manufacturing time; and lower cost (7). CAD/CAM materials are categorized as polymer-infiltrated ceramics and resin nanoceramics according to their contents, with both types having some advantages. Materials with increased resin content are soft and compliant and cause less damage to the antagonist teeth while demonstrating high wear resistance because of the presence of nano or macroparticles and use of finishing and polishing procedures. In comparison, materials with higher ceramic content exhibit greater wear resistance, improved esthetic outcomes, more biocompatibility, and lesser discoloration (7,8). Recently, CAD/CAM-fabricated,

high-load capacity hybrid ceramics combining ceramic and glass polymers were developed. An example is Vita Enamic (Vita Zahnfabrik H. Rauter, Bad Säckingen, Germany), which comprises 86% ceramic and 14% polymer by weight. Another currently employed CAD/CAM material is GC Cerasmart (GC Corporation, Tokyo, Japan), which comprises 71% ceramic and barium glass nanoparticles by weight and is based on nanotechnology (9). In addition, Vita Suprinity (Vita Zahnfabrik H. Rauter, Bad Säckingen, Germany), a zirconia-reinforced lithium silicate ceramic containing 8%-12% zirconium oxide, 56%-64% silicone dioxide, and 15%-21% lithium oxide, has been used because of its high strength (10,11).

A rougher surface after finishing procedures may cause several problems such as plaque accumulation, discoloration, and secondary caries due to bacterial adhesion. Polishing procedures provide a smooth surface and irregularities measuring smaller than bacterial diameters; this should reduce plaque accumulation (12,13). Surface roughness can also cause antagonist tooth abrasion and decreased fracture resistance of the material due to surface microcracks (14), and polishing or smoothening the surface can maximize the bend strength and minimize the risk of fractures and cracks (15). Therefore glazing and polishing or smoothening procedures are important for patient satisfaction and long-term clinical success. Various glazing techniques for improving the material strength by covering surface flaws after the manufacturing process are available for both conventional and CAD/CAM ceramics (14). Although several studies have evaluated color changes after repeated firings of ceramic materials (16-18), only a few have evaluated the optical properties of recently introduced hybrid ceramics and nanoceramics (19,20). Furthermore, no study has compared color changes after glazing procedures between conventional ceramics and newer hybrid ceramics. The purpose of this *in vitro* study was to evaluate the effects of glazing procedures on the color stability of conventional and CAD/CAM hybrid ceramics using a spectrophotometer. The null hypothesis was that there are no significant differences between these ceramic types in terms of color changes after glazing procedures.

#### Materials and Methods

In total, 84 disc-shaped specimens (12 mm diameter and 2 mm thickness) were fabricated from

the following seven dental ceramic materials: Ivoclar IPS DSign (Ivoclar Vivadent AG, Schaan, Liechtenstein), Vita Omega 900 (Vita Zahnfabrik H. Rauter, Bad Säckingen, Germany), Ceramco III (Ceramco-Dentsply, Burlington, NJ, USA), Vita Suprinity, Vita Mark II (Vita Zahnfabrik H. Rauter, Bad Säckingen, Germany), Vita Enamic, and GC Cerasmart (n=12 per material). The properties, manufacturers, and firing and glazing temperatures for these materials are shown in Table 1 (21-23).

For specimen preparation from the three conventional dental ceramics, namely Ivoclar IPS DSign, Vita Omega 900, and Ceramco III, a specially prepared teflon mold with the dimensions of the specimens was used. For each material, the powder and liquid were mixed on a clean glass surface and condensed into the teflon mold after isolation. After vibration, moist areas from the superior surfaces were removed using paper napkins. Porcelain dough samples made from (12×2 mm) thick asbestos sheets baked in vacuum in a ceramic furnace (Austromat3001, DEKEMA DentalKeramiköfen GmbH, Freilassing, Germany) accordance with the instructions.

For Vita Mark II, Vita Enamic, and GC Cerasmart, disc-shaped specimens (12×2 mm) were designed by a software programme (Autodesk Inc., CA, USA) and milled with the 5-axes imes-icore 550i (3Shape A/S, Copenhagen, Denmark). Unlike the other three CAD/CAM ceramics, Vita Suprinity specimens needed sintering, so the initially designed dimensions were kept slightly larger than 12×2 mm. The specimens were heated in a furnace with a step sintering procedure involving sintering at 950 °C for 10 min and 1500 °C for 2 h. After sintering, the thickness was adjusted and the final thickness of each specimen was measured using a digital micrometer (Digimatic Indicator 0001-2; Mitutoyo). The final dimensions of all specimens were 12×2 mm.

To obtain standardized and plane surfaces that allowed appropriate specimen positioning for color change measurements, both sides of the ceramic specimens were polished with wet 600-, 1000-, 1500-grit aluminum oxide abrasive papers under running water using the Metaserve2000 polishing machine (Buehler UK Ltd. Coventry, West Midlands, England). All specimens were glazed with their own natural glazing materials (Table 1) and ultrasonically cleaned in distilled water for 5 min before testing.

**Table 1. Materials used in study**

Product name	Type of the ceramic	Condensing method	Manufacturer	Firing temp/ time	Glazing type	Glazing temp/ time
Ivoclar IPS D Sign	Metal-ceramic porcelain (fluoroapatite leucite glass-ceramic)	Powder/liquid	Ivoclar Vivadent AG, Schaan, Liechtenstein	403-870 °C 60 °C/min 8 min + VAC	Glaze with temp	403-870 °C 60 °C/min. 5 min + VAC (18)
Vita Omega 900	Metal-ceramic porcelain (leucite crystalline glass-ceramic)	Powder/liquid	Vita Zahnfabrik H. Rauter, Bad Säckingen, Germany	600-900 °C 50 °C/min 13 min + VAC	Glaze with temp	600-900 °C 75 °C/min -VAC (21)
Ceramco III	Metal-ceramic porcelain (feldspathic porcelain)	Powder/liquid	Ceramco-Dentsply, Burlington, NJ, USA	650-960 °C 55 °C/min 10 min +VAC	Glaze with temp	650-945°C 70 °C/min -VAC (22)
Vita Mark II	Feldspar ceramic blocks	CAD/CAM blocks	Vita Zahnfabrik H. Rauter, Bad Säckingen, Germany	CAD/CAM milling	Glaze with temp	VITA AKZENT Glaze spray 850 °C (21)
Vita Enamic	Hibrit dental ceramic	CAD/CAM blocks	Vita Zahnfabrik H. Rauter, Bad Säckingen, Germany	CAD/CAM milling	Glazing liquid with Light polymerization	VITA ENAMIC Glaze light cure 30-60 sec/min 405 nm (21)
GC Cerasmart	Hybrid nanoceramic	CAD/CAM blocks	GC Corporation, Tokyo, Japan	CAD/CAM milling	Glazing liquid with light polymerization	OPTIGLAZE light cure 30-60 sec/min 405 nm (23)
Vita Suprinity	Zirconia reinforced glass ceramic	CAD/CAM blocks	Vita Zahnfabrik H. Rauter, Bad Säckingen, Germany	CAD/CAM Milling 400-840 °C 55 °C/min. 15 min + VAC	Glaze with temp	VITA AKZENT Glaze spray 850 °C (21)

CAD-CAM: Computer-aided design/computer-aided manufacturing, VAC: Vacuum

### Color Change Measurements

A spectrophotometer (VITA Easyshade®, Germany) was used to record  $L^*$ ,  $a^*$ , and  $b^*$  values. The specimens were rinsed with water and dried, following which a trained examiner recorded the color values using the spectrophotometer against a white background in standardized D65 daylight. The spectrophotometer was calibrated using the calibration plate according to the manufacturer's instructions. All measurements were performed before and after the glazing procedures. Three readings were recorded for each specimen, and the average value was calculated. Changes in each

parameter were measured as  $\Delta L$ ,  $\Delta a$ , and  $\Delta b$  by a single investigator, and the overall color change ( $\Delta E$ ) was calculated using the following equation (24):

$$\Delta E = [(\Delta L)^2 + (\Delta a)^2 + (\Delta b)^2]^{1/2}$$

### Scanning Electron Microscopy

One representative specimen with a  $\Delta E$  value closest to the mean value was selected from each group for scanning electron microscopy (SEM) studies. Each specimen was ultrasonically rinsed in water for 10 min, dehydrated for 1 week, mounted on retainers, coated with a 20 nm layer of gold-palladium alloy, and examined under a scanning electron microscope (Jeol JSM 6400,

Tokyo, Japan) for the evaluation of surface morphological changes. Photomicrographs of representative areas were taken at a magnification of 1000×.

### Statistical Analysis

All statistical analyses were performed using SPSS version 20 (IBM Corp., New York, USA). The parameters were tested for normal distribution using the Kolmogorov-Smirnov test. In accordance with a p value of <0.05 as per Levene's test, intergroup differences in  $\Delta E$  values were evaluated using the Kruskal-Wallis test, with the Mann-Whitney U test used to determine the group causing a difference. The Wilcoxon signed rank test was used for within-group comparisons. A p value of <0.05 was considered statistically significant.

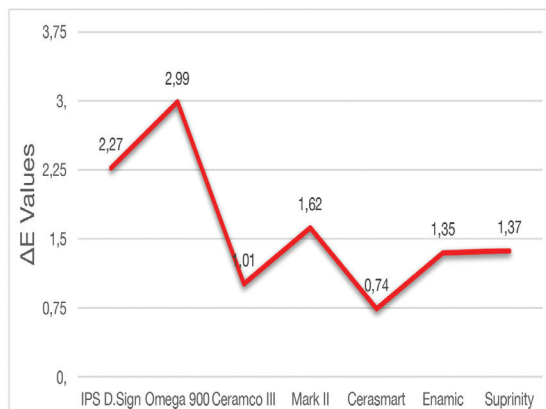


Figure 1.  $\Delta E$  values of materials

### Results

Each color parameter ( $L^*$ ,  $a^*$ ,  $b^*$ ) and color change value ( $\Delta E$ ) for the tested materials are shown in Table 2. According to the Wilcoxon test, there were statistically significant differences within groups

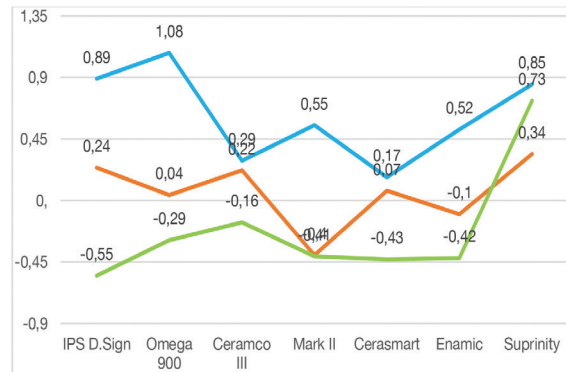


Figure 2.  $\Delta L$ ,  $\Delta a$ ,  $\Delta b$  values of materials

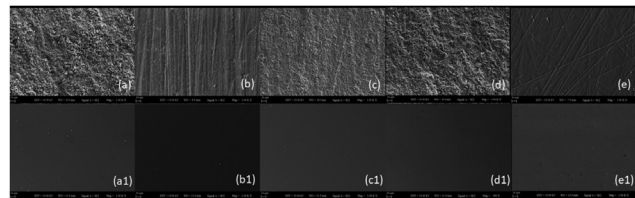


Figure 3. SEM images of ceramic surfaces (1000×)

a) Unglazed Vita Omega 900 b) Unglazed GC Cerasmart c) Unglazed Vita Enamic d) Unglazed Vita Mark II e) Unglazed Vita Suprinity a1) Glazed Vita Omega 900 b1) Glazed GC Cerasmart c1) Glazed Vita Enamic d1) Glazed Vita Mark II e1) Glazed Vita Suprinity

Table 2. Mean and standart deviation of tested material' s  $\Delta E$ ,  $\Delta L$ ,  $\Delta a$ ,  $\Delta b$  values

	$\Delta E$		$\Delta L$ L1-L2			$\Delta a$ a1-a2			$\Delta b$ b1-b2		
	Mean	SD	Mean	SD	p++	Mean	SD	p++	Mean	SD	p++
IPS D Sign	2.27 <sup>ab</sup>	0.55	-0.89 <sup>a</sup>	0.27	0.224	0.24 <sup>a</sup>	0.07	0.002	-0.55 <sup>a</sup>	0.36	0.002
Omega 900	2.99 <sup>a</sup>	0.67	1.08 <sup>b</sup>	0.67	0.182	0.04 <sup>ab</sup>	0.11	0.196	-0.29 <sup>a</sup>	0.70	0.168
Ceramco III	1.01 <sup>bc</sup>	0.58	-0.29 <sup>a</sup>	0.19	0.116	0.22 <sup>a</sup>	0.12	0.003	-0.16 <sup>a</sup>	0.16	0.011
Mark II	1.62 <sup>abc</sup>	0.70	0.55 <sup>b</sup>	0.29	0.136	-0.40 <sup>c</sup>	0.48	0.027	-0.41 <sup>a</sup>	0.87	0.116
Cerasmart	0.74 <sup>c</sup>	0.45	0.17 <sup>b</sup>	0.34	0.124	0.07 <sup>ab</sup>	0.19	0.204	-0.43 <sup>a</sup>	0.65	0.046
Enamic	1.35 <sup>bc</sup>	0.52	0.52 <sup>b</sup>	0.24	0.131	-0.10 <sup>bc</sup>	0.30	0.167	-0.42 <sup>a</sup>	0.35	0.005
Suprinity	1.37 <sup>bc</sup>	0.72	0.85 <sup>b</sup>	0.48	0.002	0.34 <sup>a</sup>	0.21	0.003	0.73 <sup>b</sup>	0.83	0.019
p+	0.000	-	0.001	-	-	0.000	-	-	0.000	-	-

SD: Standard deviation

The same superscript indicates statistically insignificant difference

+Mann-Whitney U test (p<0.05)

++Wilcoxon test (p<0.05)



( $p < 0.05$ ). In the IPS DSign and Ceramco III groups, both  $a^*$  and  $b^*$  values were significantly different before and after the glazing procedures ( $p < 0.05$ ). For Vita Mark II, there was a statistically significant difference in the  $a^*$  value, whereas the GC Cerasmart and Vita Enamic groups showed significant differences in the  $b^*$  value. In the Suprinity group,  $L^*$ ,  $a^*$ , and  $b^*$  values showed significant differences before and after the glazing procedures. On the other hand, none of the values for Omega 900 showed a significant difference.

According to Kruskal-Wallis and Mann-Whitney U tests, the color changes in all materials were clinically acceptable, with a  $\Delta E$  value of  $< 3.7$ . The  $\Delta E$  values for the conventional ceramics, i.e., Ceramco III ( $1.01 \pm 0.58$ ), IPS DSign ( $2.27 \pm 0.55$ ), and Vita Omega 900 ( $2.99 \pm 0.67$ ), were significantly higher than those for the CAD/CAM ceramics, i.e., GC Cerasmart ( $0.74 \pm 0.45$ ), Vita Enamic ( $1.35 \pm 0.52$ ), Vita Suprinity ( $1.37 \pm 0.72$ ), and Vita Mark II ( $1.62 \pm 0.70$ ). GC Cerasmart showed the maximum color stability among all the tested materials.

## Discussion

In the present study, we found significant differences among conventional and CAD/CAM ceramics with regard to the color stability after glazing procedures. While the conventional ceramic Omega 900 presented the least color stability, the CAD/CAM ceramic GC Cerasmart presented the maximum color stability. Thus, the null hypothesis was rejected.

With regard to  $L^*$  values, the color of all materials tended to be on the darker side after glazing, with positive  $\Delta L$  values for all materials except IPS Dsign and Ceramco III. Similarly, Yilmaz et al. (17) reported negative  $\Delta L$  values for IPS Dsign and Ceramco III, attributing the increased lightness to opacification, decrystallization, and devitrification after multiple firings. However, in the present study, differences in  $L^*$  values before and after glazing were not significant for any material except Vita Suprinity, which showed a significant increase in darkness that was probably caused by recrystallization and vitrification due to the presence of zirconium oxide. The CAD/CAM ceramic GC Cerasmart presented the lowest  $\Delta L$  value, although the difference was not significant.

With regard to  $a^*$  values, IPS DSign, Ceramco III, and Vita Suprinity showed significant decreases after glazing, which indicated an increase in the green

component. On the other hand, significant increases in  $a^*$  values for Vita Mark II and Vita Enamic indicated an increase in the red component. All materials except Vita Suprinity showed increased  $b^*$  values, which indicated an increase in the yellow component, although the increase was not significant for Vita Mark II. The  $b^*$  value for Vita Suprinity, a zirconia-reinforced lithium disilicate glass ceramic, showed a significant decrease, probably because of the presence of metal oxide.

All tested ceramics in the present study showed a  $\Delta E$  value of  $> 3.7$ ; therefore, the color changes after glazing were in the clinically acceptable range. Although Vita Suprinity contains 8%-12% zirconium oxide, the  $\Delta E$  value was significantly lower than those for IPS DSign and Omega 900. Among the conventional ceramics, Omega 900 showed a significantly higher  $\Delta E$  value than did Ceramco III, probably because of differences in  $\Delta a$  values between the two materials. In fact, Omega 900 showed the maximum color change that was clinically perceivable by the human eye ( $\Delta E > 2.7$ ) (5).

Among the CAD/CAM ceramics, Vita Mark II showed a high  $\Delta E$  value that was comparable with the value for Omega 900, while GC Cerasmart showed the lowest  $\Delta E$  value. Moreover, Vita Suprinity showed significant changes in all three color parameters ( $L^*$ ,  $a^*$ ,  $b^*$ ) after glazing.

In the present study, firing was performed only once for the comparison of color changes after glazing procedures between conventional veneer ceramics and polymer-infiltrated hybrid ceramics. Heffernan et al. (25) investigated color changes during firing and reported significant changes during the initial firing, with less distinct changes during subsequent firings. This means that the first firing is clinically more significant than subsequent firings. Our results supported the findings of previous studies reporting that repeated firings up to nine times did not noticeably affect the color stability of any tested shade (26,27).

The CIE  $L^*$ ,  $a^*$ ,  $b^*$  color system is commonly used for color research and serves as the gold standard for research in dentistry worldwide (28). Visual color observations are the result of physiological and psychological responses to radiant energy stimulation (29), and several uncontrolled factors can result in altered perception of color. Conversely, instrumental

measurements can quantify color and allow more uniform and precise interpretations (30).

Colorimeters are more economic and convenient devices when compared with other devices such as spectrophotometers (31). However, these devices have small apertures, and a considerable fraction of the light entering the assessed material is lost because it emerges on the surface outside the measurement aperture. This loss of light is termed edge-loss and could be a cause of color measurement errors (32). In particular, edge-loss may occur with translucent materials and when the diameter of the evaluated material is smaller than the aperture of the colorimeter (18). Our findings may differ from clinical color measurements because of the *in vitro* study design and specimen shape. However, the geometry of disc-shaped specimens is generally adequate for the measurement of surface smoothness and color changes (17).

In 2014, Gómez-Polo et al. (31) published that there is no clear opinion regarding the correlation between the human eye and a spectrophotometer with regard to tooth shade determination. A spectrophotometer excludes the subjective mistakes of a human observer. However, Chu et al. (32) stated that instrumental and visual shade matching methods should be combined. In the present *in vitro* study, the background for color assessments was always uniformly white, considering that different backgrounds can affect the  $\Delta E$  value (33). Instrumental color analysis offers a potential advantage over visual color determination because instrumental readings are objective, can be quantified, and are more rapidly obtained (34). Spectrophotometers are among the most accurate, useful, and flexible instruments for color matching. They function by measuring the spectral reflectance or transmittance curve of a specimen and are useful for surface color measurements (35). Because the use of a colorimeter results in edge-loss, we used the VITA Easyshade® guide spectrophotometer in the present study.

Celik et al. (36) pointed out that disc-shaped specimens provide more accurate results than do crown-shaped specimens. Accordingly, we used disc-shaped specimens in the present study. When light falls on a rough and irregular surface, it irregularly reflects and diffuses, resulting in a color change (33). Kim et al. (37) found that the texture of the surface

affected the  $L^*$  value, which is lower for a glazed surface (seen as white) than for a polished surface. Other studies also showed that the surface texture affects light reflection and results in variations in the  $L^*$  value (33,37). The SEM findings in the present study supported our results in terms of the surface texture.

The microstructure of hybrid ceramics is different from that of conventional dental porcelains, although both types have a large proportion of crystalline particles. Heffernan et al. (34) reported that the quantity of transmitted and emerged light, in comparison with the wavelength of light, depends on the amount, chemical structure, and size of crystalline particles in the matrix of the material. Moreover, Yilmaz et al. (17) reported that Empress E-max and Empress II ceramics presented color change values different from those for conventional ceramics because of the high crystalline content. We observed similar results in the present study comparing CAD/CAM hybrid ceramics and conventional powder-liquid ceramics. The differences in our study can be attributed to the effect of the crystalline particles in the ceramic matrix and their chemical composition on the wavelength of the reflected light.

Several studies have suggested that certain metal oxides do not show color stability after being subjected to firing temperatures, and that surface colorants demonstrate pigment breakdown at firing temperatures (38). Furthermore, the  $\Delta E$  values for ceramics containing zirconium oxide increase, although not beyond 3.7 (39). Barghi (40) reported that slight changes in color after multiple firings may be attributed to the increase in density caused by the decrease in air bubbles trapped within the porcelain. Porcelain exhibits high viscosity at low liquid temperatures, and this impairs the diffusion of ionic species in the molten glassy phase. In the present study, Ceramco III showed the lowest  $\Delta E$  value among the conventional ceramics. The other tested ceramics, Omega 900 and IPS DSign, contain a large proportion of crystalline leucite particles. Therefore, greater color changes may have occurred because of damage to the surface of the ceramic structure caused by repeated exposure of the dense crystalline structure to high temperatures. Moreover, greater color changes may have been observed for IPS DSign and Omega 900 because, as mentioned above,

the quantity of the transmitted and emerged light depends on the crystalline particles in the matrix (34). We also observed that the  $\Delta E$  values for the CAD/CAM ceramics were significantly lower than those for the conventional ceramics, probably because conventional ceramics require mixing of powder and liquid and are less dense than CAD/CAM ceramics, which are relatively more homogenous and dense. Among the CAD/CAM ceramics, Vita Mark II, which exhibits a high feldspar ceramic content along with 20%-23% aluminium oxide, and Vita Suprinity, which contains lithium disilicate with 8%-12% zirconium oxide, showed high  $\Delta E$  values. This can be attributed to the glazing procedure, high temperature exposure, and the high crystalline content. Moreover, the presence of metal oxide in the Vita Suprinity may have resulted in the increased color change. Yılmaz et al. (17) reported that high firing temperatures were required for ceramics containing leucite and lithium disilicate. Continuous and/or high-temperature firings of these porcelains caused pyroclastic flow with surface accumulation. The disc-shaped specimens lost their contours and recrystallization occurred, which consequently led to color changes exceeding the clinically acceptable range (17). Vita Suprinity has a high lithium disilicate content while IPS DSign and Omega 900 have a high leucite content, and this may have resulted in the high  $\Delta E$  values for these materials in the present study.

Schürmann and Olms (41) reported that the hybrid ceramics Vita Enamic and Lava Ultimate showed better shade stability than did Vita Mark II after immersion in different stain solutions for 120 days. Both Vita Mark II and Vita Suprinity showed higher  $\Delta E$  values than did Vita Enamic and GC Cerasmart, probably because of differences in the inorganic particle content, glazing procedures, and metal oxide content. Both Vita Enamic and GC Cerasmart undergo glazing with a special liquid and at a lower temperature, which results in lesser color changes for these materials.

Tekçe et al. (20) studied the effects of glazing (with optiglaze) on three CAD/CAM hybrid ceramics, namely Vita Enamic, GC Cerasmart, and Lava Ultimate. The authors reported that glazed surfaces were more advanced and smoother than were unglazed surfaces. In our study, we used a special glazing liquid and a light-cured nanofilled glazing system

for Vita Enamic (Vita Enamic Glaze Liquid) and GC Cerasmart (optiglaze), respectively, according to the manufacturers' recommendations. As a result of these nonthermal glazing procedures, both these materials showed low  $\Delta E$  values, with GC Cerasmart showing the lowest value among all seven tested materials. This finding is consistent with that of Sahin et al. (42), who reported smooth and color-stable surfaces after 3000 thermocycles for specimens treated with optiglaze.

Cetindemir et al. (10) evaluated the effect of light sources and CAD/CAM monolithic blocks on the degree of conversion (DC) of cement, which is associated with the translucency of CAD/CAM materials. They reported significantly different DC values for GC Cerasmart and Vita Enamic, which have similar filler profiles and organic and inorganic contents, and explained that this difference was caused by the nanoparticle and aluminum contents. The translucency of all-ceramic restorations increases with the particle size. The pores in hybrid ceramics are filled with polymer resin. Resin matrix and nanoceramic particles bond to each other with strong cross-linking, and pores filled with nanoparticles in the ceramic matrix result in a homogenous structure. Nanoceramics have nanoparticles, whereas hybrid ceramics have macroparticles. Hybrid ceramics also contain 20%-23% aluminum, whereas nanoceramics have no aluminum content. These differences may be responsible for the greater color changes in Vita Enamic than in GC Cerasmart in the present study.

This study has some limitations. First, the surface roughness of the ceramics and its effects on their color stability were not investigated. Second, the dyeability of the materials was not considered. Third, thermal cycling was not applied to the specimens. Fourth, there was no saliva layer because of the *in vitro* design. Further studies overcoming these limitations are necessary to further clarify our findings.

## Conclusions

Within the study limitations, the findings suggest that glazing procedures do not affect the color stability of conventional and CAD/CAM hybrid ceramics to a clinically significant extent. However, the color stability of glazed CAD/CAM hybrid ceramics is better than that of glazed conventional veneer ceramics.



## Ethics

**Ethics Committee Approval:** The ethics committee approval was not necessary since the study was *in vitro*.

**Informed Consent:** This study is a laboratory study. Therefore, patient consent is not required.

**Peer-review:** Externally peer-reviewed.

## Authorship Contributions

Concept: Ö.Y.Ö., G.S.Ö., Design: Ö.Y.Ö., G.S.Ö., Data Collection or Processing: G.S.Ö., B.S.O.A., Analysis or Interpretation: Ö.Y.Ö., Literature Search: G.S.Ö., Writing: Ö.Y.Ö., G.S.Ö., B.S.O.A.

**Conflict of Interest:** No conflict of interest was declared by the authors.

**Financial Disclosure:** The authors declared that this study received no financial support.

## References

- Jarad FD, Russell MD, Moss BW. The use of digital imaging for color matching and communication in restorative dentistry. *Br Dent J* 2005; 199: 43-9.
- Uludag B, Usumez A, Sahin V, Eser K, Ercoban E. The effect of ceramic thickness and number of firings on the colour of ceramic systems: An *in vitro* study. *J Prosthet Dent* 2007; 97: 25-31.
- Pizzamiglio E. A color selection technique. *J Prosthet Dent* 1991; 66: 592-6.
- Johnston WM, Kao EC. Assessment of appearance match by visual observation and clinical colorimetry. *J Dent Res* 1989; 68: 819-22.
- Seghi RR, Hewlett ER, Kim J. Visual and instrumental colorimetric assessments of small color differences on translucent dental porcelain. *J Dent Res* 1989; 68: 1760-4.
- Berns RS. Billmeyer and Saltzman's principles of colour technology. 3rd ed. New York: John Wiley & Sons; 2000. p. 71-4.
- Russe ND, Sadoun MJ. Resin-composite blocks for dental CAD/CAM applications. *J Dent Res* 2014; 93: 1232-4.
- Blatz MB. Long-term clinical success of all-ceramic posterior restorations. *Quintessence Int* 2002; 33: 415-26.
- Cekic-Nagas I, Ergun G, Egilmez F, Vallittu PK, Lassila LV. Micro-shear bond strength of different resin cements to ceramic/glass-polymer CAD-CAM block materials. *J Prosthodont Res* 2016; 60: 265-73.
- Cetindemir AB, Sermet B, Ongul D. The effect of light sources and CAD/CAM monolithic blocks on degree of conversion of cement. *J Adv Prosthodont* 2018; 10: 291-9.
- Riquieri H, Monteiro JB, Viegas DC, Campos TMB, de Melo RM, de Siqueira FASG. Impact of crystallization firing process on the microstructure and flexural strength of zirconia-reinforced lithium silicate glass-ceramics. *Dent Mater* 2018; 3: 1483-91.
- Yilmaz C, Korkmaz T, Demirkoprulu H, Ergun G, Ozkan Y. Color stability of glazed and polished dental porcelains. *J Prosthodont* 2008; 17: 20-4.
- Ikeda M, Matin K, Nikaido T, Foxton RM, Tagami J. Effect of surface characteristics on adherence of *S. mutans* biofilms to indirect resin composites. *Dent Mater J* 2007; 26: 915-23.
- de Jager N, Feilzer AJ, Davidson CL. The influence of surface roughness on porcelain strength. *Dent Mater* 2000; 16: 381-8.
- Fischer H, Schäfer M, Marx R. Effect of surface roughness on flexural strength of veneer ceramics. *J Dent Res* 2003; 82: 972-5.
- Pires-de-Souza FCP, Casemiro LA, Garcia LFR, Cruvinel DR. Colour stability of dental ceramics submitted to artificial accelerated ageing after repeated firings. *J Prosthet Dent* 2009; 101: 13-8.
- Yilmaz K, Gonuldas F, Ozturk C. The effect of repeated firings on the color change of dental ceramics using different glazing methods. *J Adv Prosthodont* 2014; 6: 427-33.
- Yilmaz B, Ozcelik TB, Wee AG. Effect of repeated firings on the color of opaque porcelain applied on different dental alloys. *J Prosthet Dent* 2009; 101: 395-404.
- Acar O, Yilmaz B, Altintas SH, Chandrasekaran I, Johnston WM. Color stainability of CAD/CAM and nanocomposite resin materials. *J Prosthet Dent* 2016; 115: 71-5.
- Tekçe N, Fidan S, Tuncer S, Kara D, Demirci M. The effect of glazing and aging on the surface properties of CAD/CAM resin blocks. *J Adv Prosthodont* 2018; 10: 50-7.
- Available from: URL: <https://www.vita-zahnfabrik.com>
- Available from: URL: <https://www.firindestek.com/ceramco-3-porselen-tozu-pisim-tablosu/>
- Available from: URL: <https://www.gceurope.com>
- Nguyen C, Augros C, Rocca JP, Lagori G, Fornaini. KTP AND Er:YAG laser dental bleaching comparison: a spectrophotometric, thermal and morphologic analysis. *Laser Med Sci* 2015; 8: 2157-64.
- Heffernan MJ, Aquilino SA, Diaz-Arnold AM, Haselton DR, Stanford CM, Vargas MA. Relative translucency of six all-ceramic systems. Part II: core and veneer materials. *J Prosthet Dent* 2002; 88: 10-5.
- Berns RS. Billmeyer and Saltzman's principles of color technology. 3rd ed. New York: John Wiley & Sons; 2000. p. 71-4.
- Rosenstiel SF, Land MF, Fujimoto J. Contemporary fixed prosthodontics. 4th ed. St Louis: Elsevier; 2006. p. 709-39, 740-3.
- van der Burgt TP, ten Bosch JJ, Borsboom PC, Kortsmit WJ. A comparison of new and conventional methods for quantification of tooth color. *J Prosthet Dent* 1990; 63: 155-62.
- Seghi RR, Johnston WM, O'Brien WJ. Performance assessment of colorimetric devices on dental porcelains. *J Dent Res* 1989; 68: 1755-9.
- Bolt RA, Bosch JJ, Coops JC. Influence of window size in small-window colour measurement, particularly of teeth. *Phys Med Biol* 1994; 39: 1133-42.
- Gómez-Polo C, Gómez-Polo M, Celemin-Viñuela A, Martínez Vázquez De Parga JA, De Parga V. Differences between the human eye and the spectrophotometer in the shade matching of tooth colour. *J Dent* 2014; 42: 742-5.
- Chu SJ, Trushkowsky RD, Paravina RD. Dental color matching instruments and systems. Review of clinical and research aspects. *J Dent* 2010; 38: 2-16.

33. Lee YK, Lim BS, Kim CW. Effect of surface conditions on the color of dental resin composites. *J Biomed Mater Res* 2002; 63: 657-63
34. Heffernan MJ, Aquilino SA, Diaz-Arnold AM, Haselton DR, Stanford CM, Vargas MA. Relative translucency of six all-ceramic systems. Part I: core materials. *J Prosthet Dent* 2002; 88: 4-9.
35. O'Brien WJ, Kay KS, Boenke KM, Groh CL. Sources of color variation on firing porcelain. *Dent Mater* 1991; 7: 170-3.
36. Celik G, Uludag B, Usumez A, Sahin V, Ozturk O, Goktug G. The effect of repeated firings on the color of an all-ceramic system with two different veneering porcelain shades. *J Prosthet Dent* 2008; 99: 203-8.
37. Kim IJ, Lee YK, Lim BS, Kim CW. Effect of surface topography on the color of dental porcelain. *J Mater Sci Mater Med* 2003; 14: 405-9.
38. O'Brien WJ, Kay KS, Boenke KM, Groh CL. Sources of color variation on firing porcelain. *Dent Mater* 1991; 7: 170-3.
39. Alharbi A, Ardu S, Bortolotto T, Krejci I. Stain susceptibility of composite and ceramic CAD/CAM blocks versus direct resin composites with different resinous matrices. *Odontology* 2017; 105: 162-9.
40. Barghi N. Color and glaze: effects of repeated firings. *J Prosthet Dent* 1982; 47: 393-5.
41. Schürmann MG, Olms C. Shade Stability of Polymer-Infiltrated and Resin Nano Ceramics. *Open Dent J* 2018; 12: 791-800.
42. Sahin O, Dede DO, Koroglu A, Yılmaz B. Influence of surface sealant agents on the surface roughness and color stability of artificial teeth. *J Prosthet Dent* 2015; 114: 130-7.