

## A new *Exochus* species from Turkey (Hymenoptera : Ichneumonidae: Metopiinae)

Janko KOLAROV\*

### Summary

*Exochus erkini* sp. nov. (Hymenoptera : Ichneumonidae : Metopiinae) from Turkey is described. It is distinguished from the similar *Exochus castaniventris* Brauns by body size and colouration, thickened flagellum, justacoxal carina, areolation of propodeum, strongly inclivous nervulus and shorter second tarsal segment of hind legs.

The Ichneumonidae fauna of Turkey is poorly studied. In a small number of works there are messages for Ichneumonidae species from Turkey, of which more significant are those of Heinrich (1978) and Sedivi (1959) as well as the list of parasites, identified on different insects in Turkey (Tunçyürek - Soydanbay, 1976; 1978). On the other hand the border - line zoogeographical situation of Turkey supposes an interesting fauna composition.

In determining the materials of the family Ichneumonidae from Turkey sent to me by Dr. Enis Erkin (University of Ege, Faculty of Agriculture, Department of Entomology, Bornova, Izmir) a new species of subfamily Metopiinae was found which is described below.

### *Exochus erkini* sp. nov.

Female : Body 8,7 mm long. Head restricted behind. Vertex with a strong tubercle against interantennal process. Eye orbitae slightly excavate behind antennal sockets. Flagellum strongly thickened after its base, with 34

---

\* Institute of Introduction and Plant Resources, 4122 Sadovo, Bulgaria.

segments. First segment 1,8 as long as wide, sixth one 0,63 as long as wide. Cheek 0,9 as long as base of mandible. Occipital carina absent in the middle.

Mesonotum and mesopleurae rare fine punctured, the distance between punctures longer than their diameter. Pronotum and methapleurae shining, not punctured. Prepectal carina reaching front part of subtegular edge. Notauli almost pointshaped. Front wing 6,5 mm long. Nervulus strongly inclivous of 0,48 of its length. Parallel vein reaching postnervulus in lower third part (Fig. 1). Nervellus inclivous, intercepted in lower third part.

Propodeum shorter than in *Exochus castaniventris* Brauns, polished and smooth, first lateral and apical half of pleural area finely punctured. Basal area and areola not separated, costula evident (Fig. 2). Propodeal spiracle elongate, touching pleural carina. Justacoxal carina lameliform (Fig. 3).

Dorsal carinae of first tergite not longer than its half. Tergites rare and fine punctured, with short hairs on lateral parts. Third epipleura wide.

Legs strongly swollen, hind femur laterally 2,0 as long as wide. Second tarsal segment slightly longer than fifth.

Black; upper quarter of face, frontal orbitae to vertex, cheek and lower half of outer orbitae, mandible, palpi, tegulae, apex of scutellum and postscutellum yellow; hind corner of pronotum orange; scutellum, mesopleurae, apical area of propodeum, abdomen and legs red coloured; basal quarter of flagellum beneath dark red.

Male unknown.

It is distinguished from the similar *Exochus castaniventris* Brauns by body size and colouration, thickened flagellum, justacoxal carina, areolation of propodeum, shorter second tarsal segment of hind legs and strongly inclivous nervulus.

Material : Holotype ♀, from Alaşehir, Manisa district, Turkey, 20.09.1984, leg. E. Erkin on *Glycina max*, in author's collection.

#### Acknowledgements

I would like to express my gratitude to Dr. E. Erkin (University of Ege, Faculty of Agriculture, Department of Entomology, Bornova, Izmir-Turkey) for his kind submission of the material examined. I thank also Dr. J. Papp (Zoological Department, Hungarian Natural History Museum, Budapest, Hungary) for his sending a comparative material of *Exochus castaniventris* Brauns.

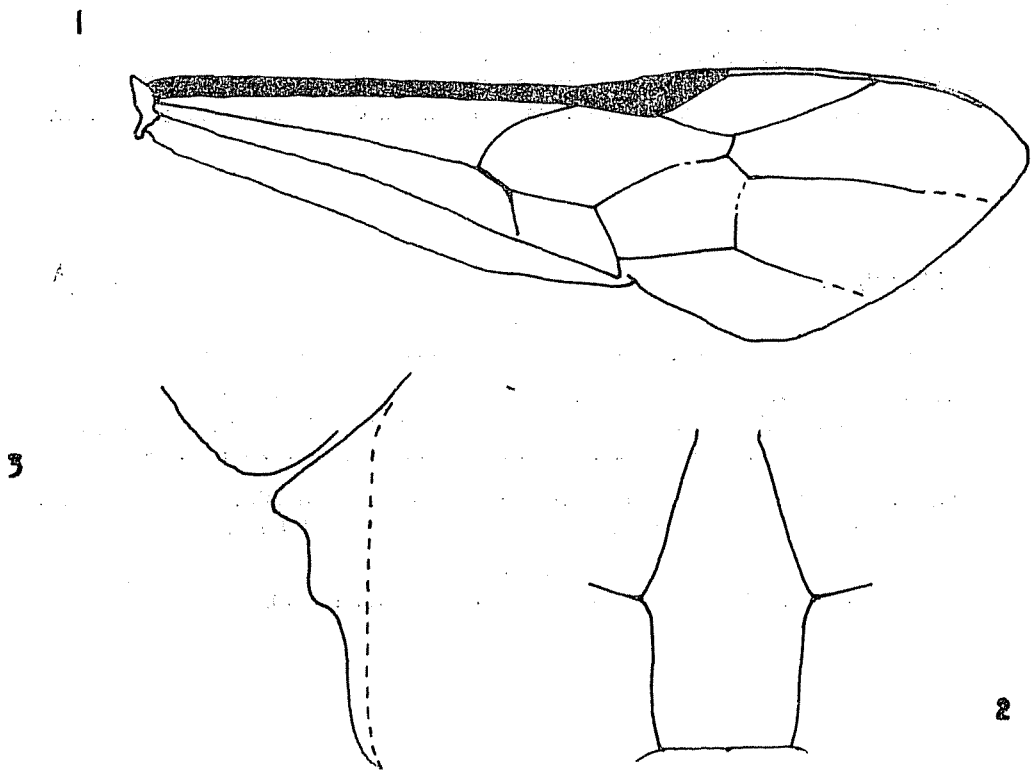
## Özet

Türkiye'den yeni bir *Excchus* türü (Hymenoptera : Ichneumonidae  
Metopiinae)

Bu çalışmada Türkiye'den bilim dünyası için yeni olan *Exochus erkini* sp. nov. (Hymenoptera : Ichneumonidae : Metopiinae) tanıtılmaktadır. Bu tür yakın olduğu *Exochus castaniventris* Brauns'ten vücut büyüklüğü, rengi, kalınlaşmış flagellum'u, justacoxal carina ve propodeum alanı ile nervulus'un dik olarak kıvrılması, arka bacakların ikinci tarsus segmentinin daha kısa olmasıyla ayrılır.

## Literature

- Heinrich G., 1978. Easternpalearctic Ichneumoninae. L., 1-80.
- Sedivi J., 1959. Wissenschaftliche Ergebnisse der Zoologischen Expedition des National Museums in Prag nach der Türkei. 26. Hymenoptera, Ichneumonidae. Acta ent. Mus. nat. Pragae, 33 (539) : 107-116.
- Tunçyürek-Soydanbay M., 1976. The list of natural enemies of agricultural crop pests in Turkey. Part I. Bit. Kor. Bült. 16 (1) : 40.
- , 1978. The list of natural enemies of agricultural crop pest in Turkey. Part II. Türk. bitki kor. edrg., 2 (2) : 68-70.



**Text for drawings**

Fig. 1-3. *Exochus erkini* sp. nov. ♀ : 1- front wing; 2- areola; 3- justacoxal carina.