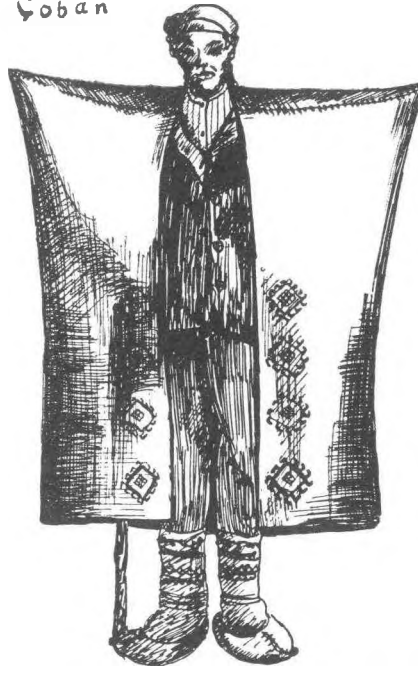


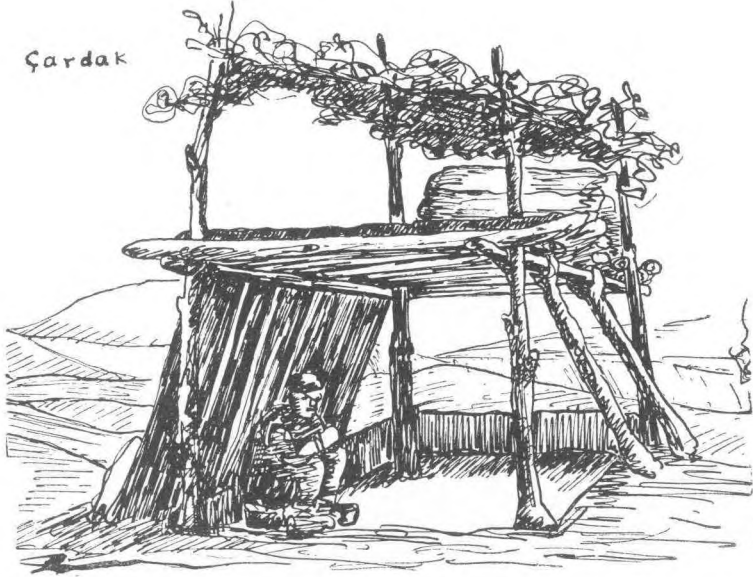
Hasandede — Kôm



Şoban



Şardak



Cıbo



Karakeçi



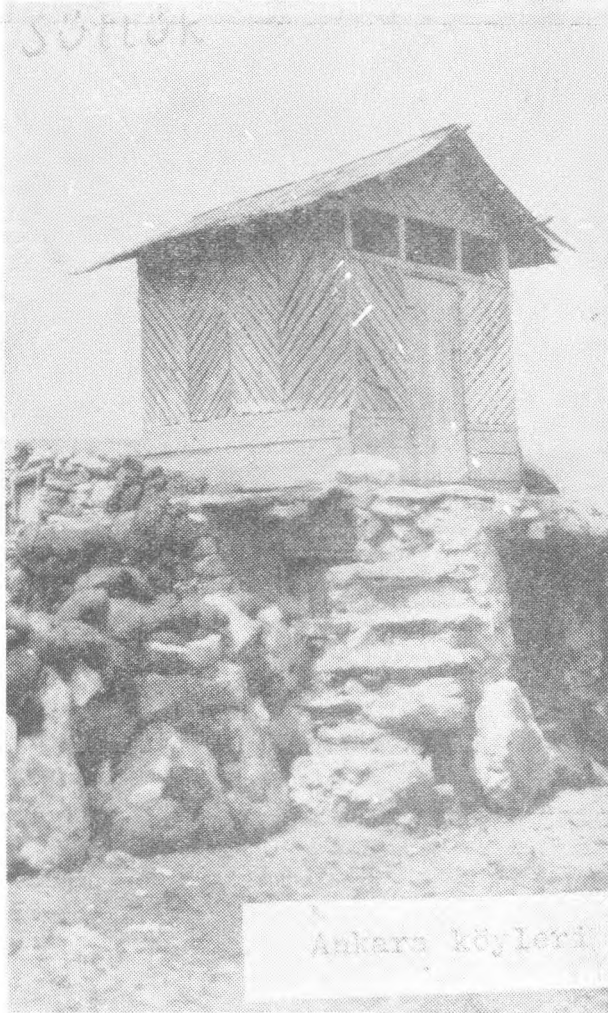
Karahacılı



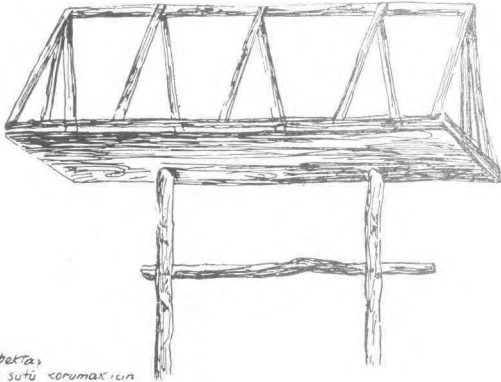
Koyun sağma



Eğrek

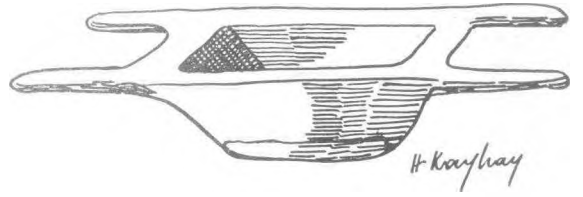


Sütlük: Süt soğutacak yer. Buzdolabı vazifesini görür (gece ayazcıda)



Sütlük

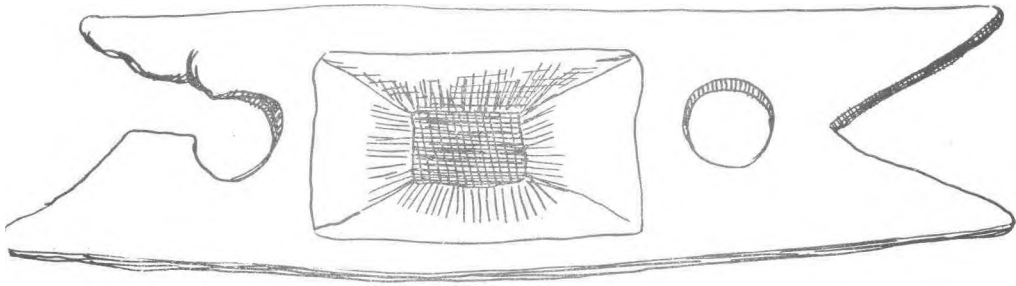
Havibektaş
Gele sütü sorumasının



H. Kayhan

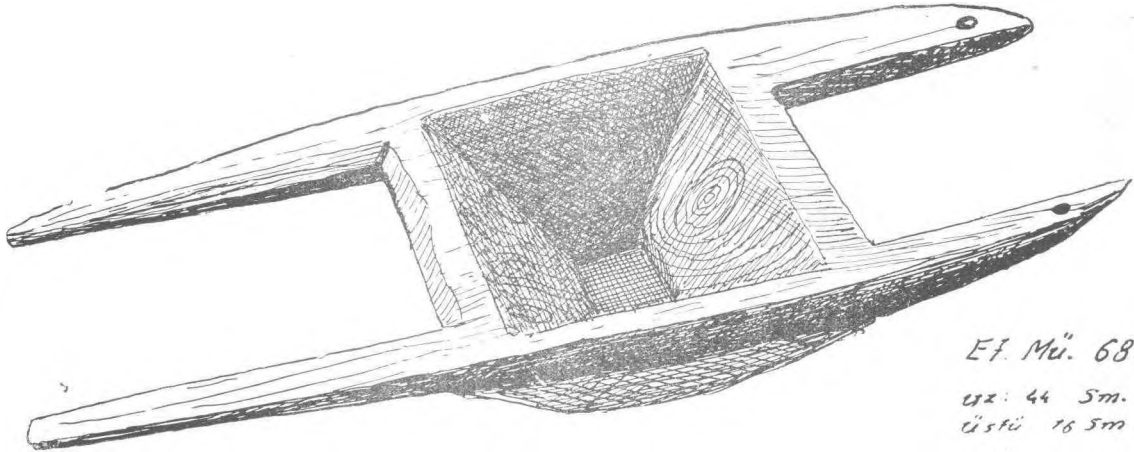
Karahüyük. Kültepe

Süzek = Süzgeç



Süzgeç

Karakuyu (Alaca)

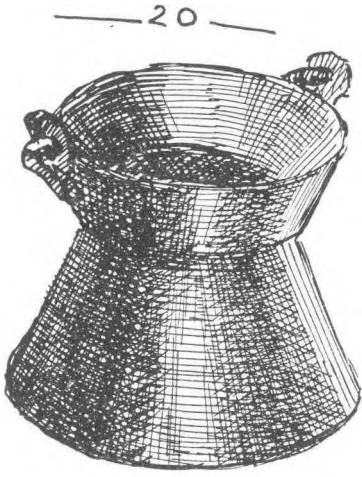


Et. Mü. 6857

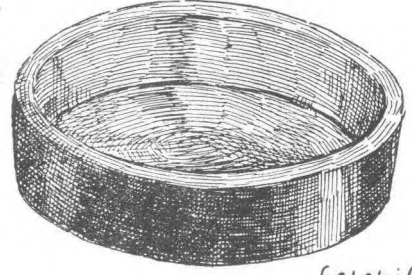
uz: 44 sm.
üsfü 16 sm

Süzek

Çingil

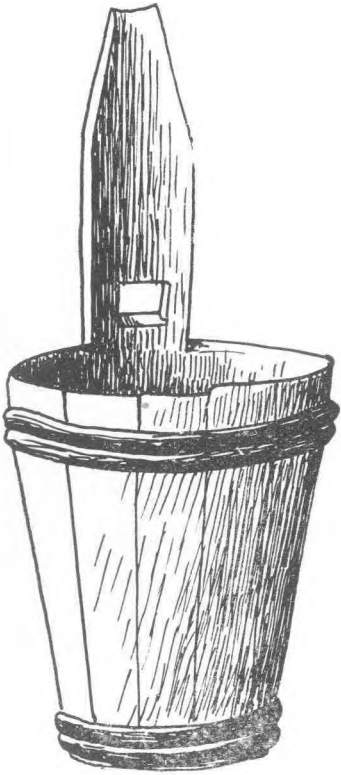


Mihmar - Cebiz ağacından yapılmış süt kabı.



Çelebi (Keskin)

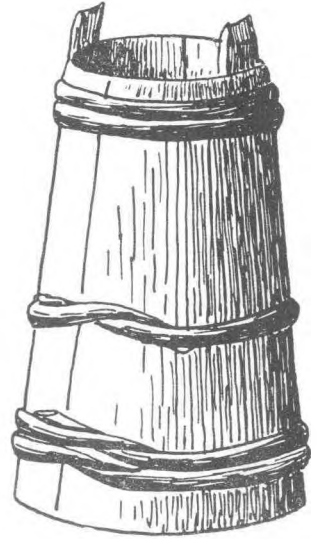
Karahacılı (Adana)
Süt, yoğurt için



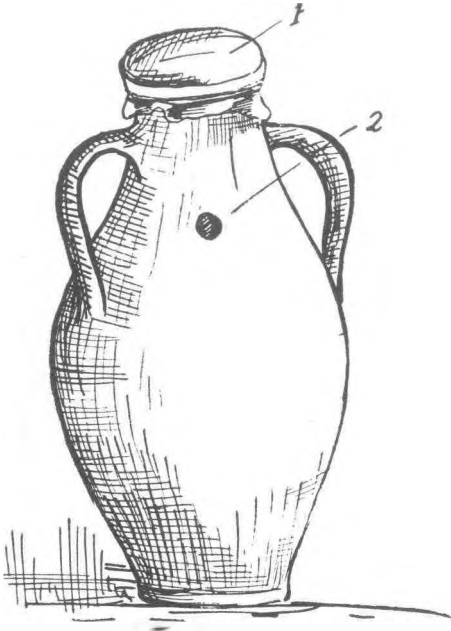
Süt saımaya.

yük 25 a
ağız kut 12 a

güvlek

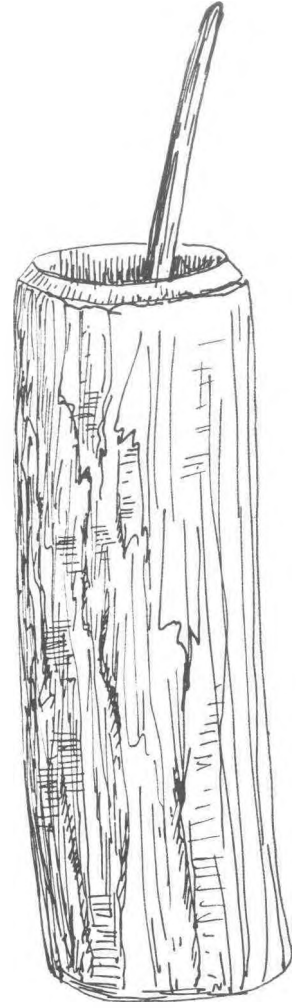


Kastamonu

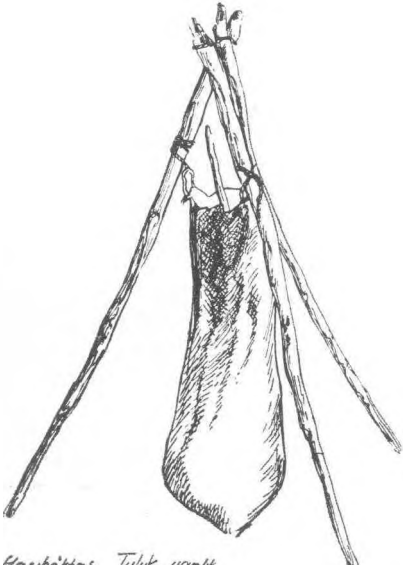


Turfan

- 1- İşkembe
- 2- Soluk deliği



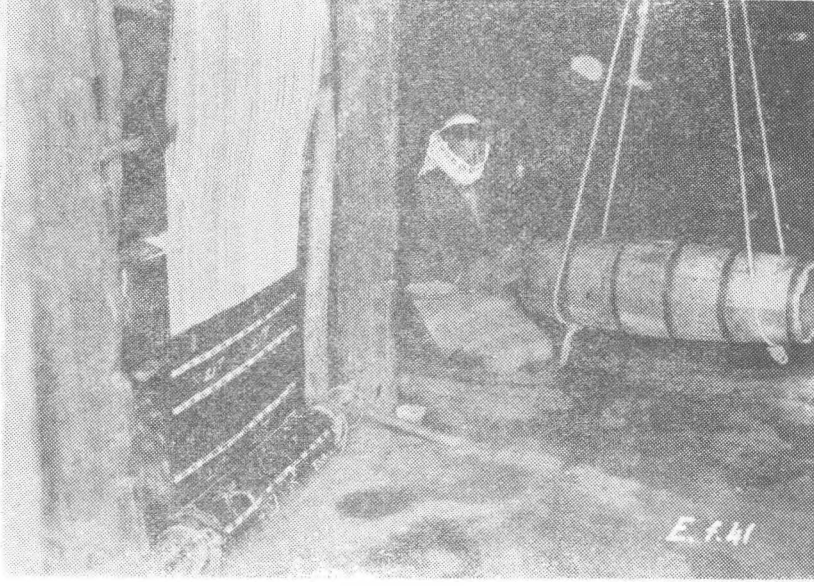
Odun yayık



Kashitan, Tülük yapıt



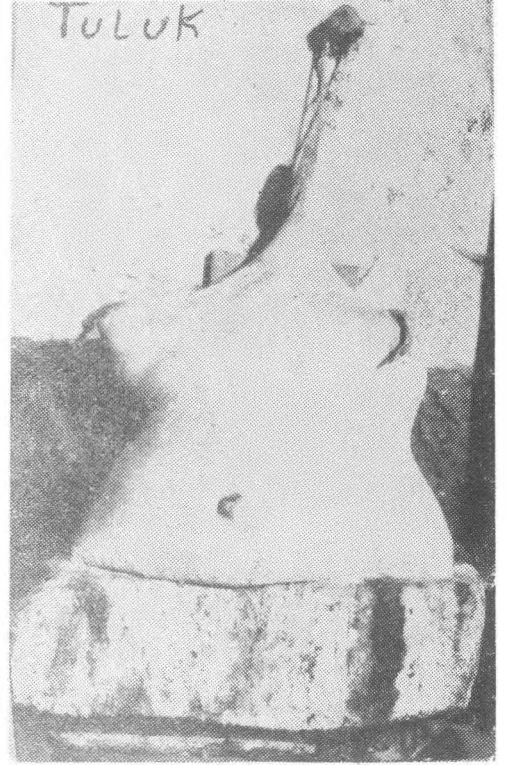
ÖrÜ yayık



Ufkî yayık



Kurbanlık

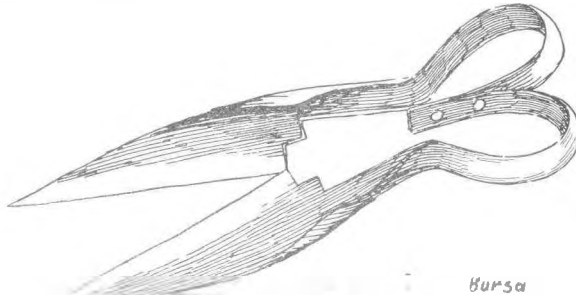


Tuluk

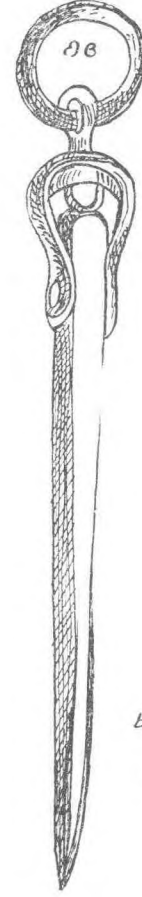
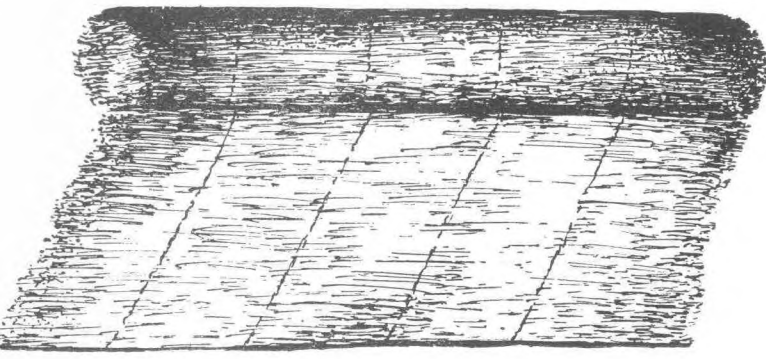


peynirbaşı (Kurşunlu) = peynir yapılan yer

Kırklık



Bursa

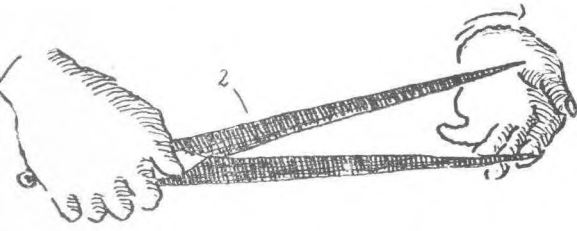
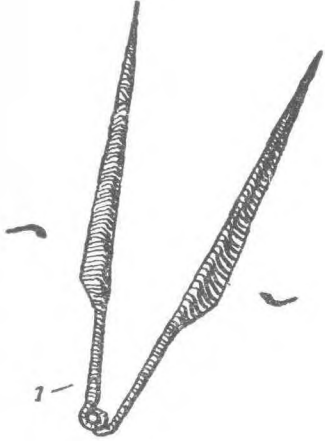


boyu: 47.5 cm

Kazık

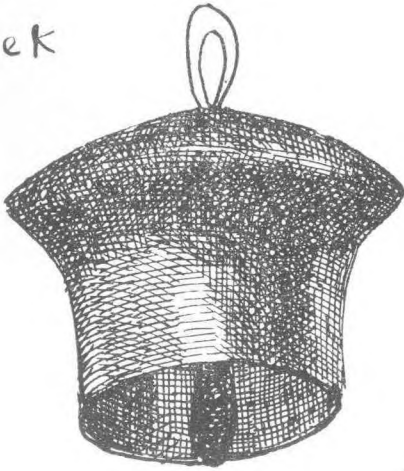
İst.

Hayvanları bağlamak için yere çakılan.



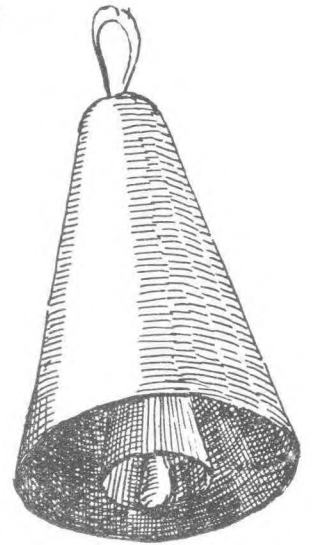
1- gırtlık - 2- kırkma şekli

Kelek



Bursa

Çan





R. 1 Niğde'nin Dünderlı Kkyü Gençler
Derneği Yönetim Kurulu



R. 1 Niğde'nin Dünderlı Köyü Gençler
Derneği bayrağı ve Yönetim Kurulu

♩ = 88 H O

1

Türk-men kı-zı un-e-le-yor le-yi-li-lem Un e-le-mez

kın e-le-yor le-yi-li-lem Türk-men kı-zı Türk-men kı-zı
Ah le-li-lem Türk-men kı-zı

le-yi-li-lem A-ya-ğın-da don-kır-mı-zı le-yi-li-lem
Türk-men kı-zı A-ya-ğın-da don-kır-mı-zı don-kır-mı-zı

♩ = 96 H U

2

Çe-kir-ge-nin u-cu in-di-ya-zı ya-di-lay-la-la

Ol-hal-ma-di ko-çu-n i-le-ku-zu-ya-di-lay-la-la

♩ = 100 H O

3

En-di-vi-tin ka-ya-...-sı-...-sı-...

I-...-ci-ye-ğit-ye-va-...-sı-(ye-ye-yih) yar-ak-ka-lı Fa-di-...

mem I-...-ci-ye-ğit-ye-va-...-sı-(ye-ye-yih)

yar-ak-ka-lı Fa-di-...-mem

www.hongon.com.tr

$\text{♩} = 100$ H 0

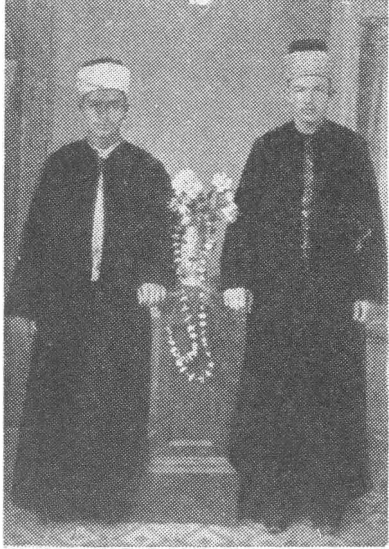
De-rem yük-sek a-ta-ma-di-m ur-ga-nı a-ma-n
ya-r yar a-man Ü-sü-dük-çe çe-şek ü-s-tü-ne
yor-ga-nı a-man a-man a-man de-ve-li Sor-dum
as-lın ne-re-li De-di İs-ken-de-re-li Çok sal-
la-ma aö-be-ği Dü-Sü-rür-sün be-be-ği

$\text{♩} = 160$ H 0

Al-tı-nı boz-dı-ra-yı-m (a-man a-man)
Çep-sa-m-tı de-yil-si-n (a-man a-man)
Ge-r-da-na di-z-di-re-yim. (a-man a-man)
Çe-bim-de ge-z-di-re-yim. (a-man a-man)
Ge-r-da-na di-z-di-re-yi-m
Çe-bim-de ge-z-di-re-yi-m
A-be-nim de al-hi-na-li kek-li-gim (a-man a-man)
Yar-yol-la-rın no-re-ler-de kek-le-yi-m



Resim: 1 — Konyalı bir müderris'n giyimi
(Özel arşivimizden)



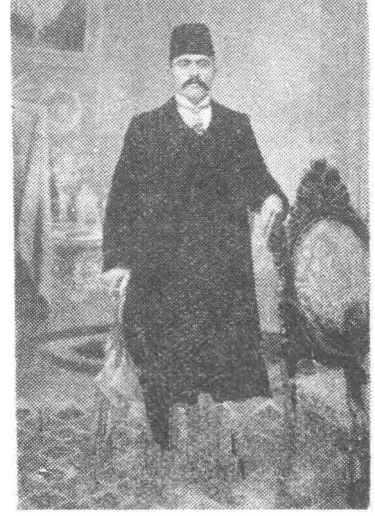
Resim: 2-3 — Konya'da bir molla ve eşraftan bir gencin giyimi
(Özel arşivimizden)



Resim: 4 — Konya eşrafının giyimi. Samur kürklü
(Konya Müzesi Arşivi)



Resim: 5 — Konya'da bir ağanın giyimi. Kuzu kürklü. (Konya Müzesi Arşivi)



Resim: 6 — Konya'da memur giyimi (Özel arşivimizden)



Resim: 7 — Konya'da memur giyimi (Özel arşivimizden)



Resim: 8 — Konya'da efe giyimi (Konya Müzesi Arşivi)



Resim: 9 — Konyalı bir gencin giyimi (Konya Müzesi Arşivi)



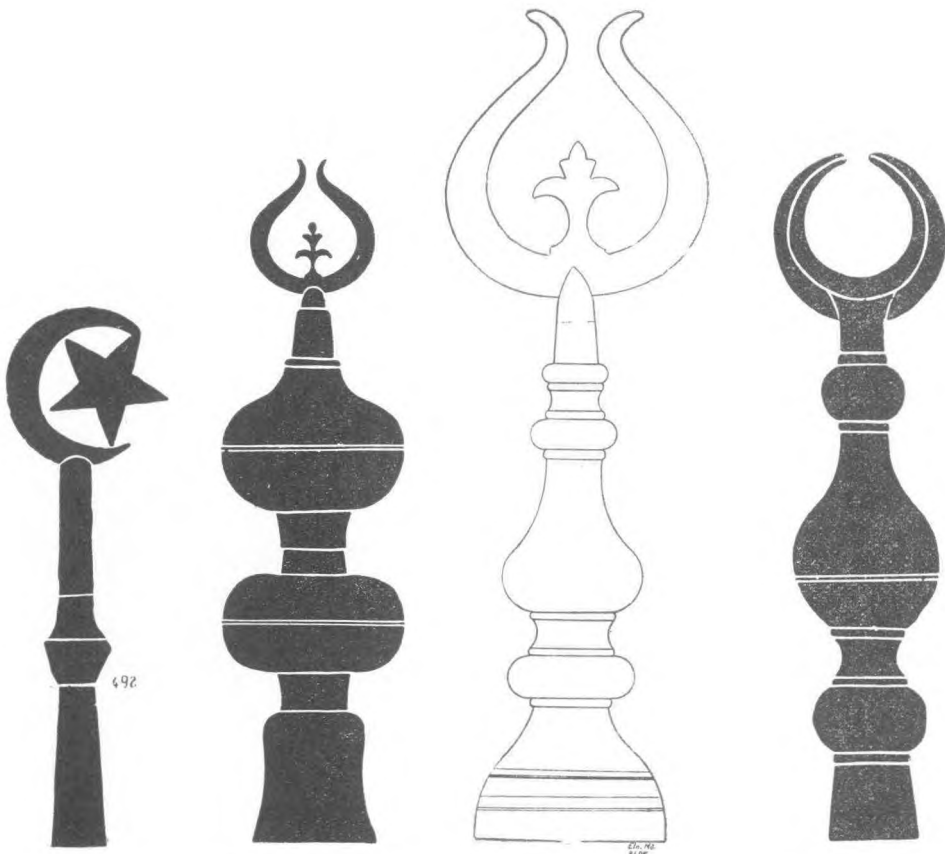
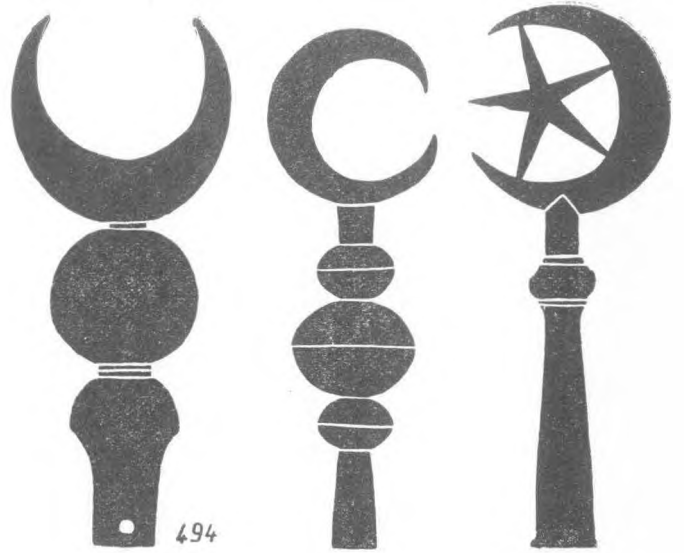
Resim: 10 — Konya esnafında giyim örnekleri (Konya Müzesi Arşivi)

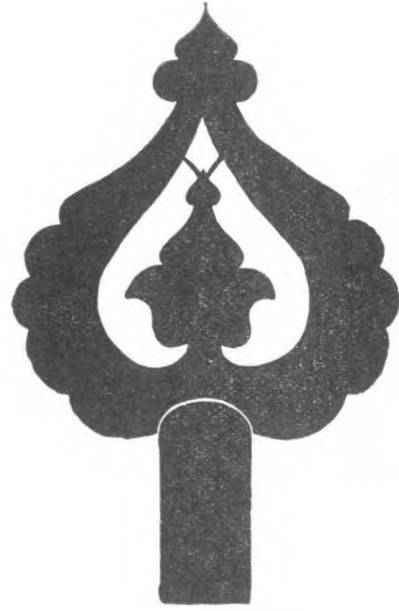


Resim: 11 — Bir mevlvî dervişinin giyimi (Konya Müzesi Arşivi)

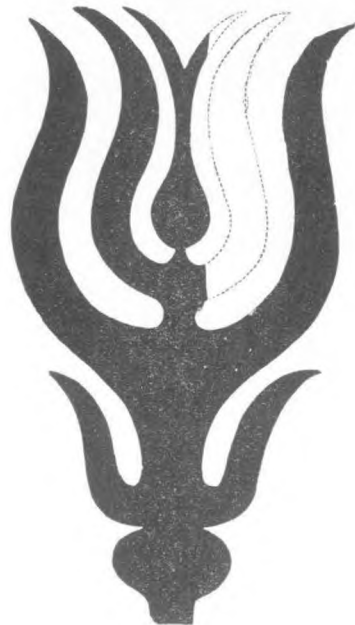


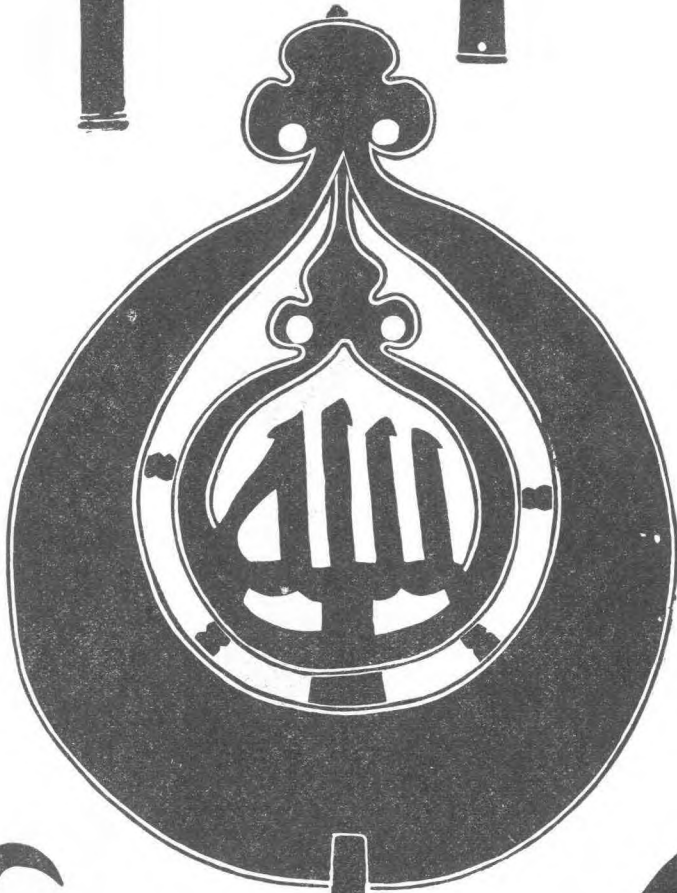
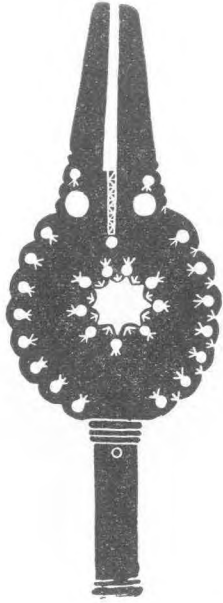
SANAT ANSIKLOPEDI
syf. 40

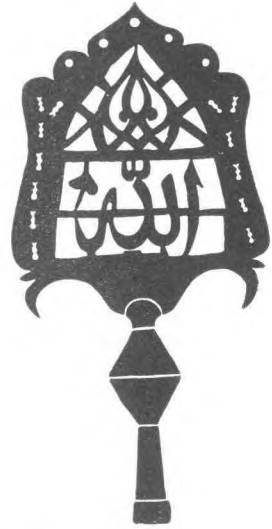




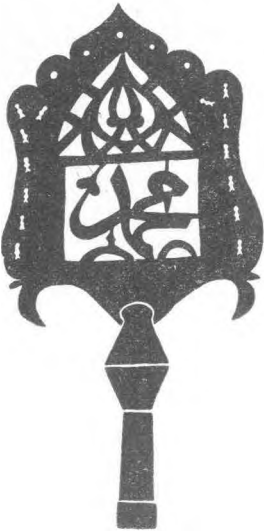
4186

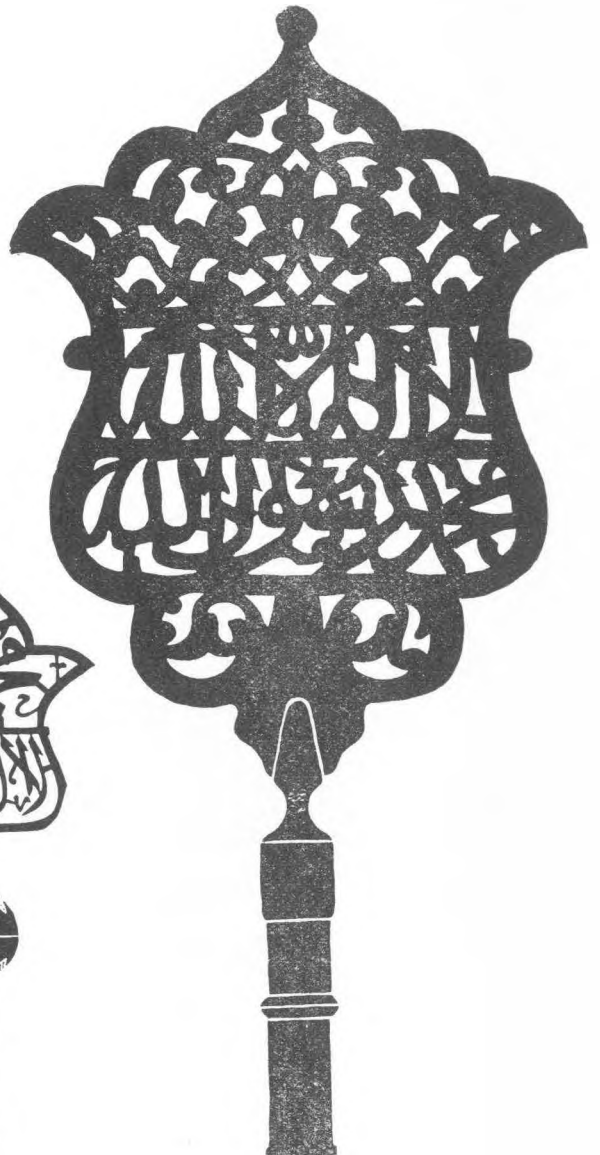


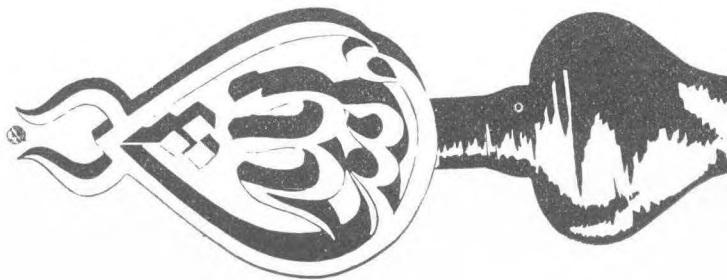
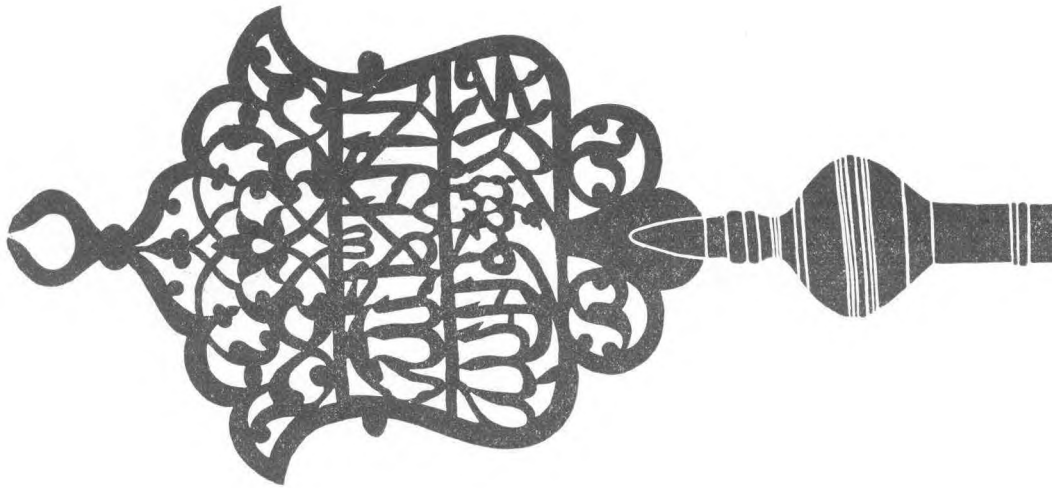
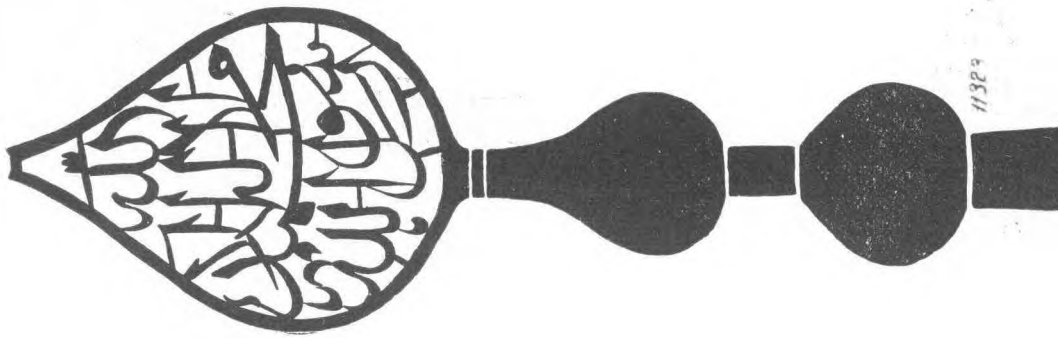


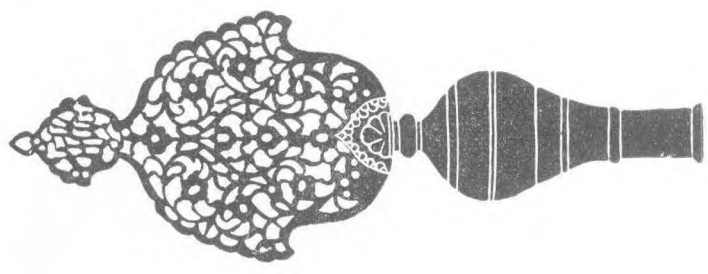
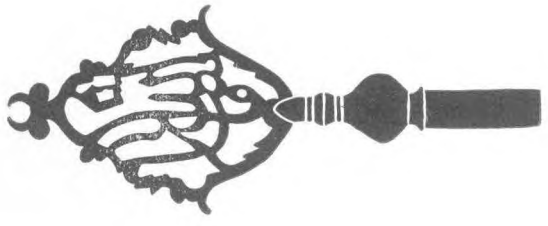








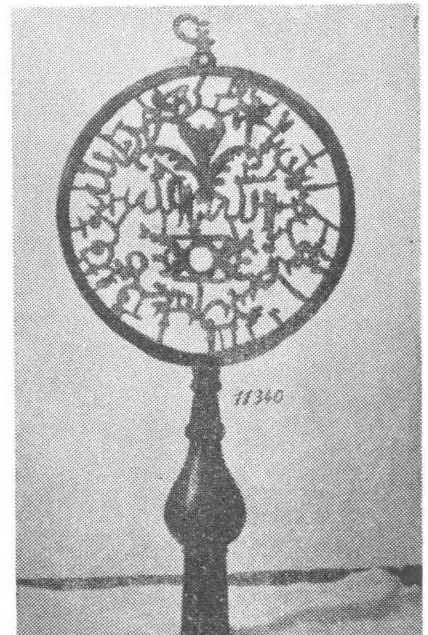
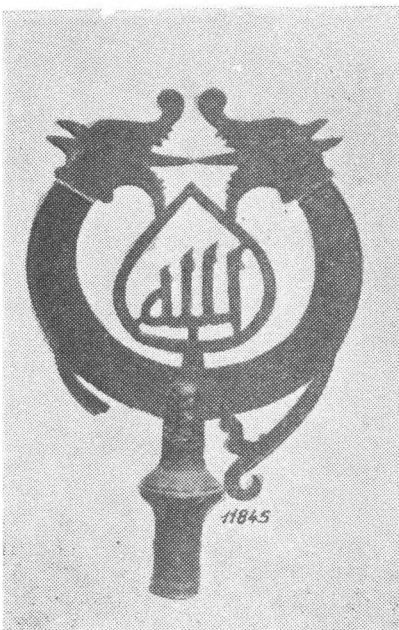
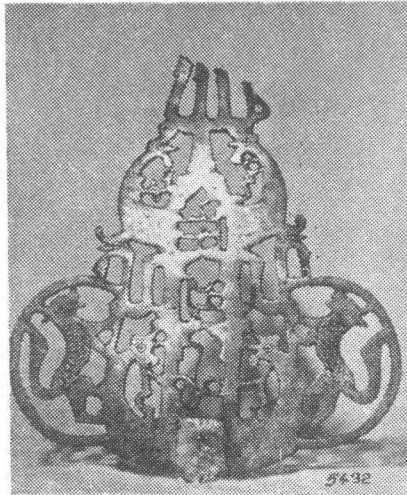
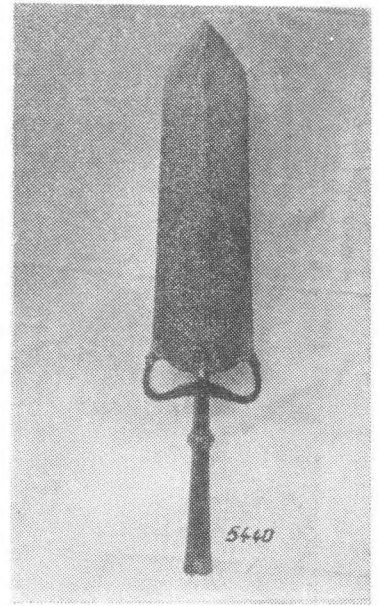
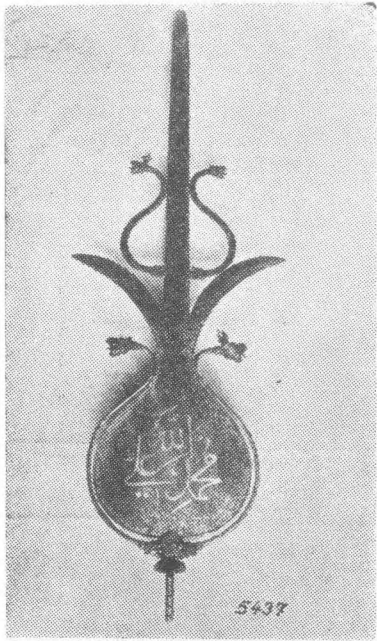








11846





Katarbaşı (Toroşlar)

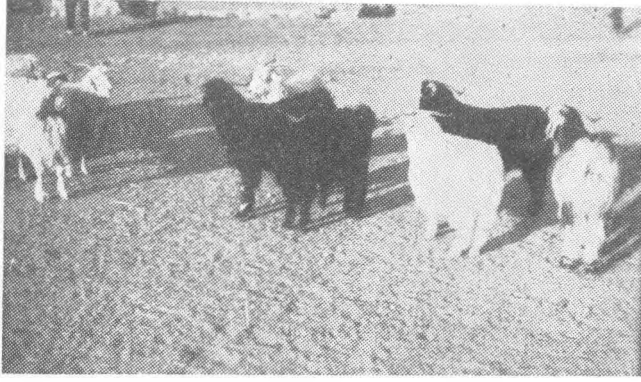


Çoban



Çobanlar kepenekleri ile





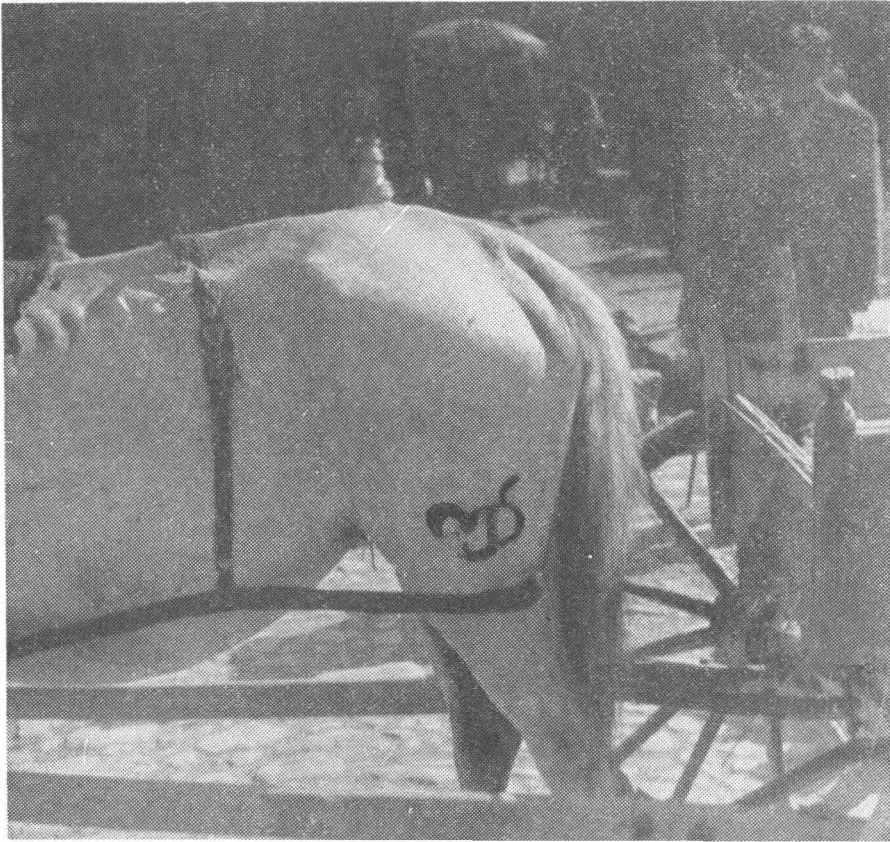
Sürü

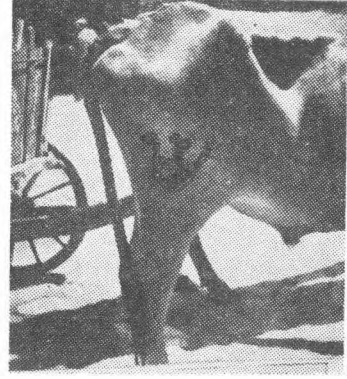
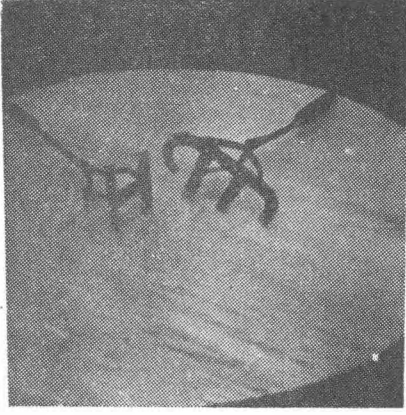


Sığır hayvanları



Kösemem

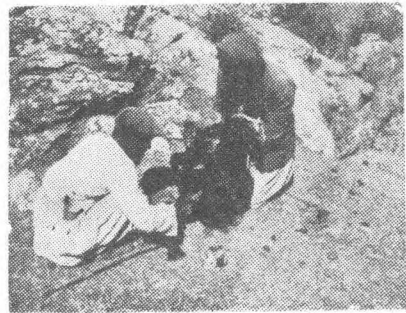




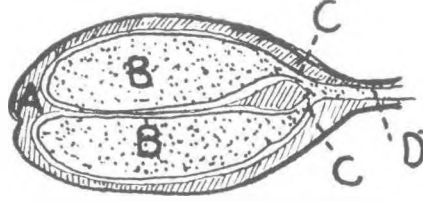
Damgalar



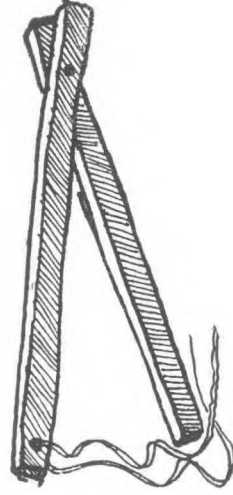
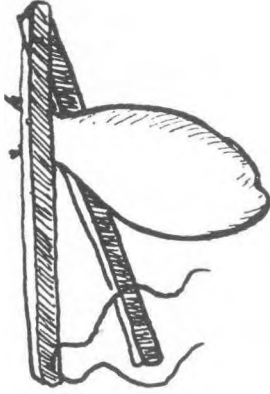
Bir süvari



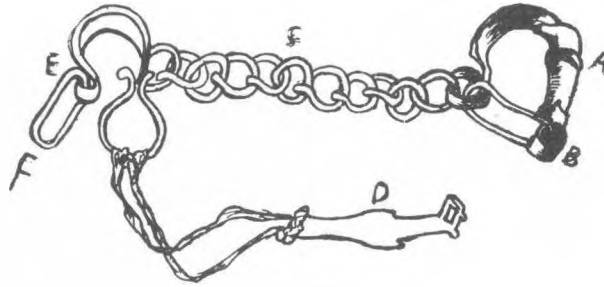
İğdiş etme



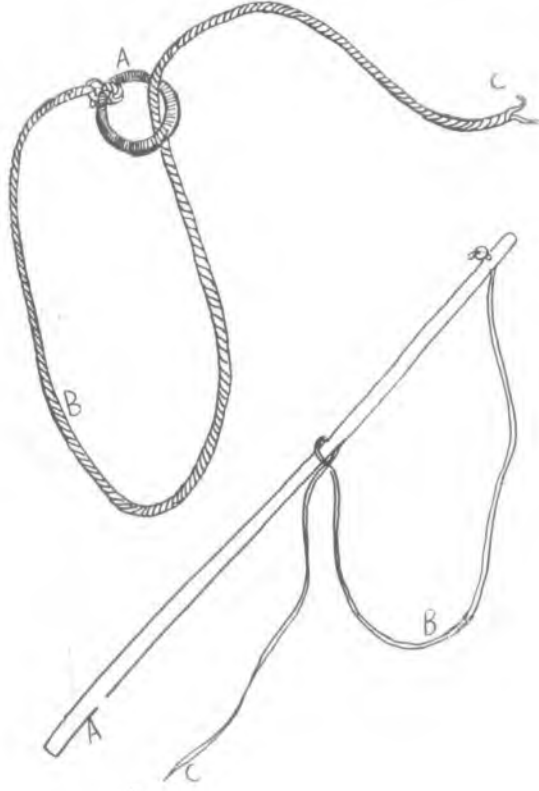
A — Torba, B — Yumurta
C — Damar, D — Bağlanan yer



Kıskaçlar



Bukağı
A—Kovan, B—Peri, C—Peri takası, Ç—Bakla,
zincir, D — Anahtar, E — Paça, F — Paça
takası, H — Anahtar bağı (ip)



Siyretme ve kement

A — Boynuz halka, B — Kıl kendir (Boyu: 5 m.), C — Uç veyahut tutamak

Kuruk

A — Çöven, B — Kendir, C — Uç yahut kendir ucu