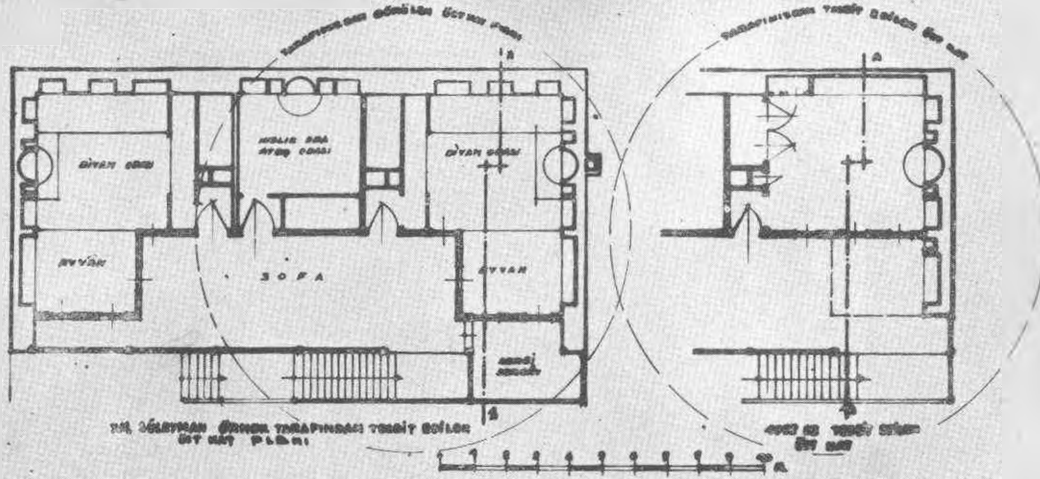
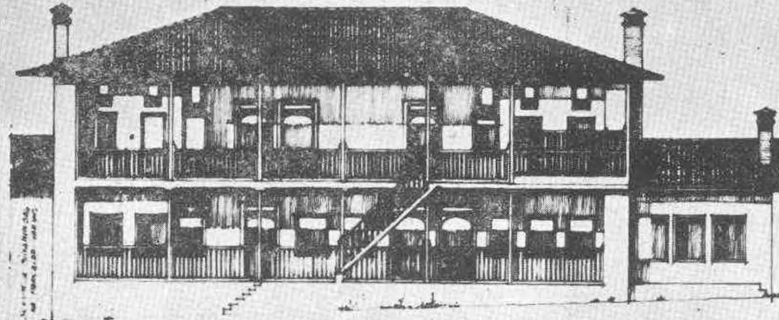
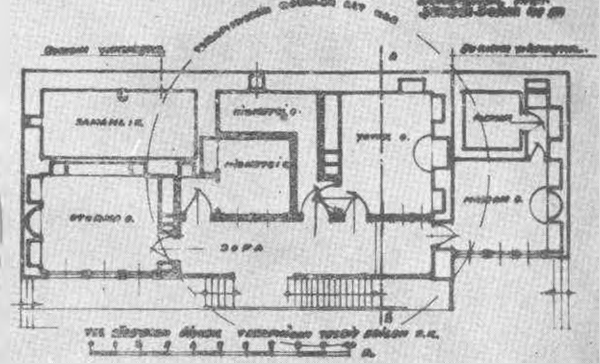


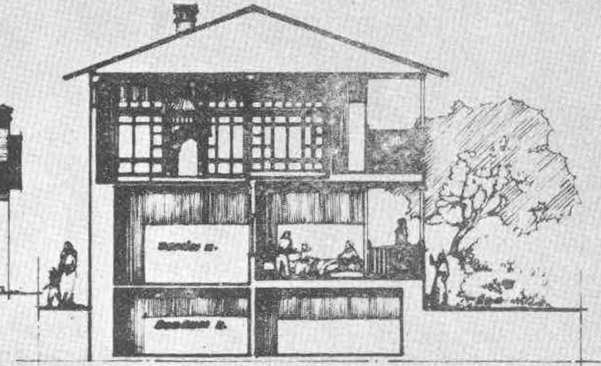
Külâhga Şehrinin Eski Evleri 1.



Çiyan Zade "Tunizli Nardaklar" Evi



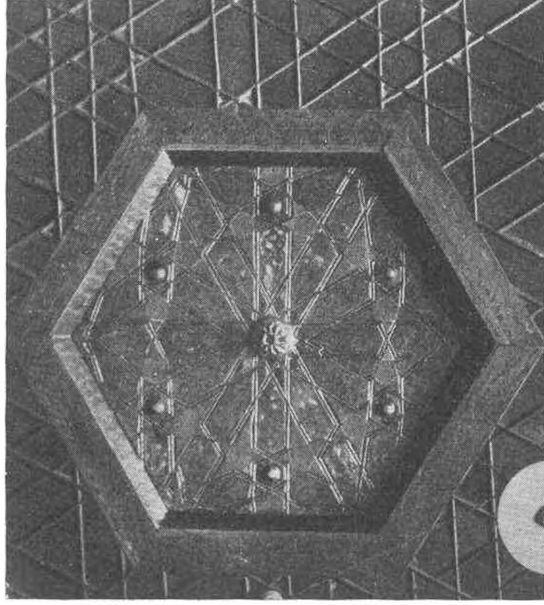
BUNU CİPHESİ



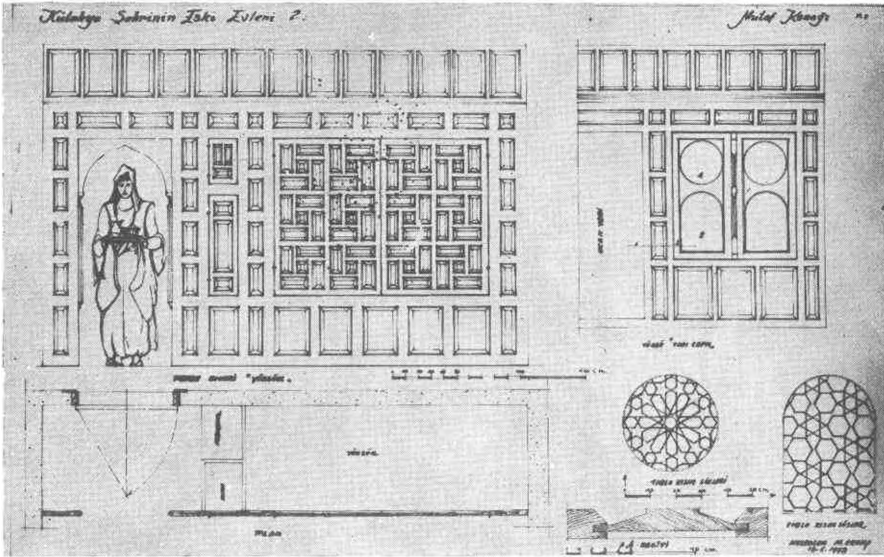
A.İ. kesiti

1908 yılında  
M. A. 1908 yılında

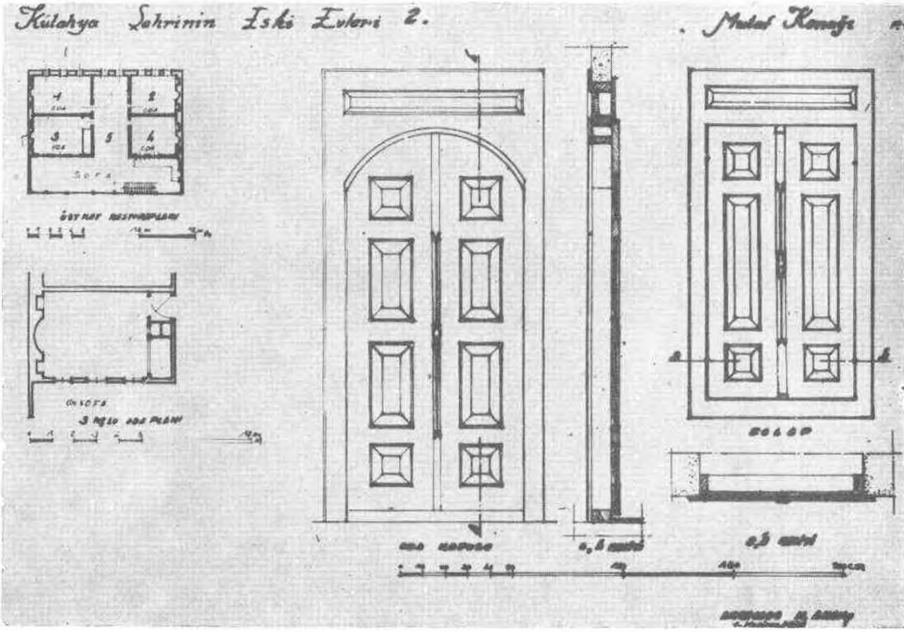
Çiyanzade evi



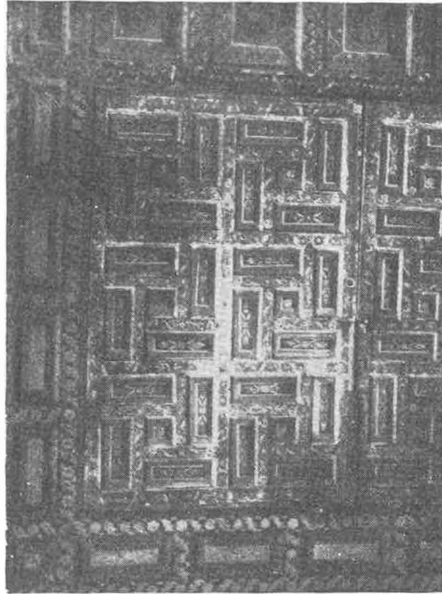
Resim. 2 — Çiyanzade evi Tavan göbeği



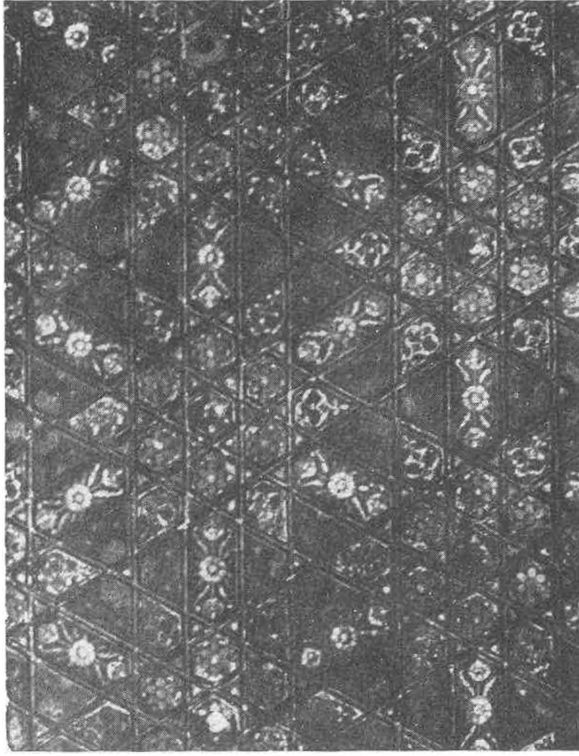
Res. 3 — Mutaf Konağından



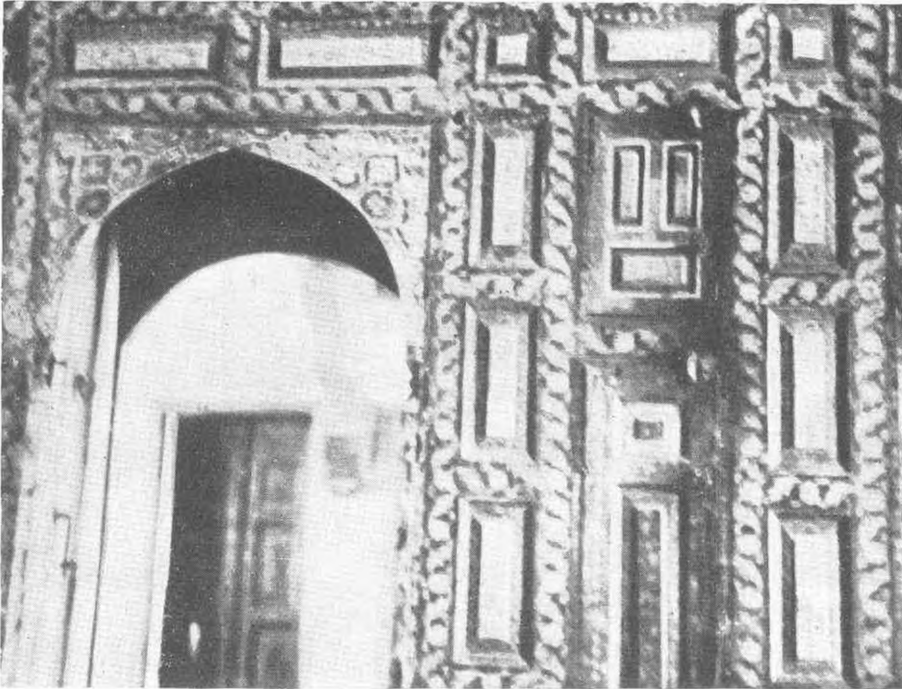
Res. 4 — Mutaf Konağı'ndan



Res. 5 — Mutaf Konağı yüklüğü

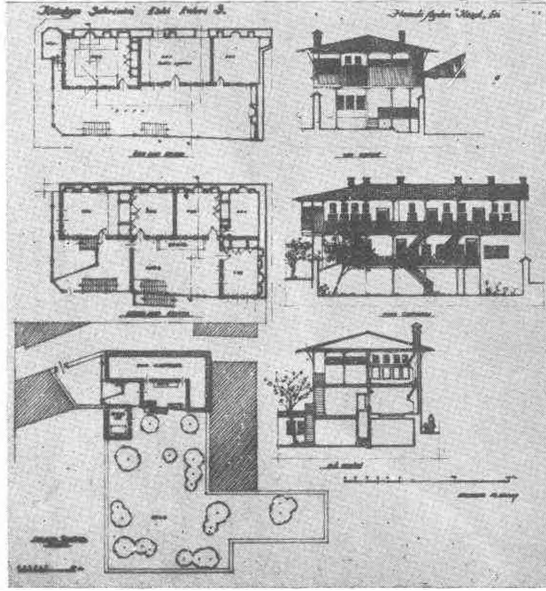


Res. 6 — Mutaf Konağı tavan kaplaması

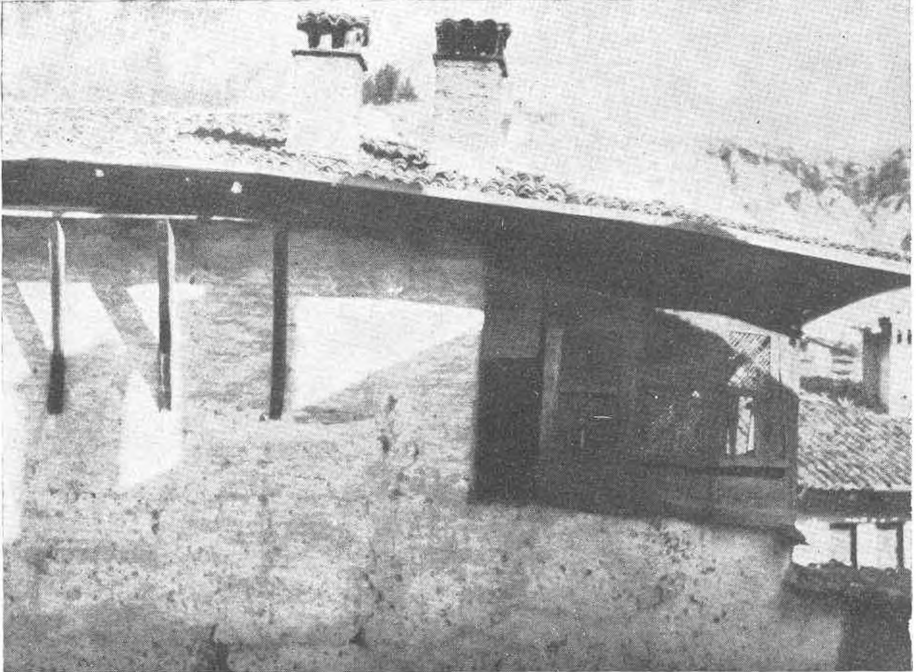


Res. 7 — Mutaf konağı perde duvarı

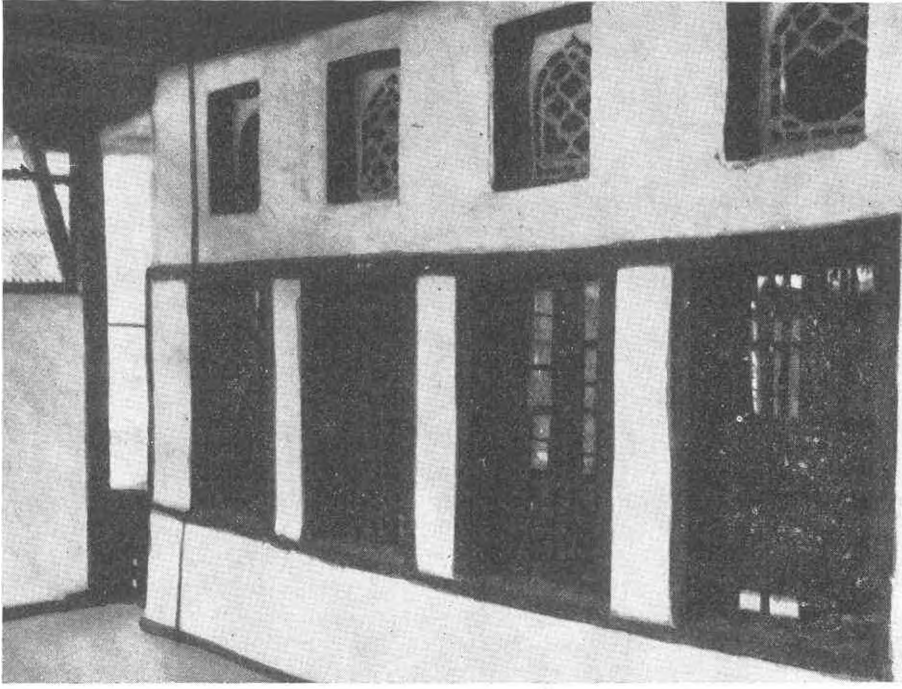




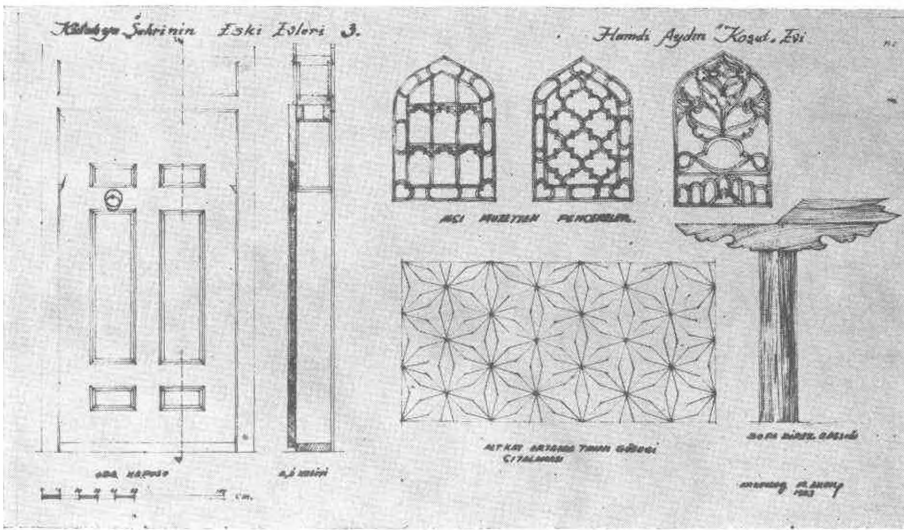
Res. 8 — Koşut evi



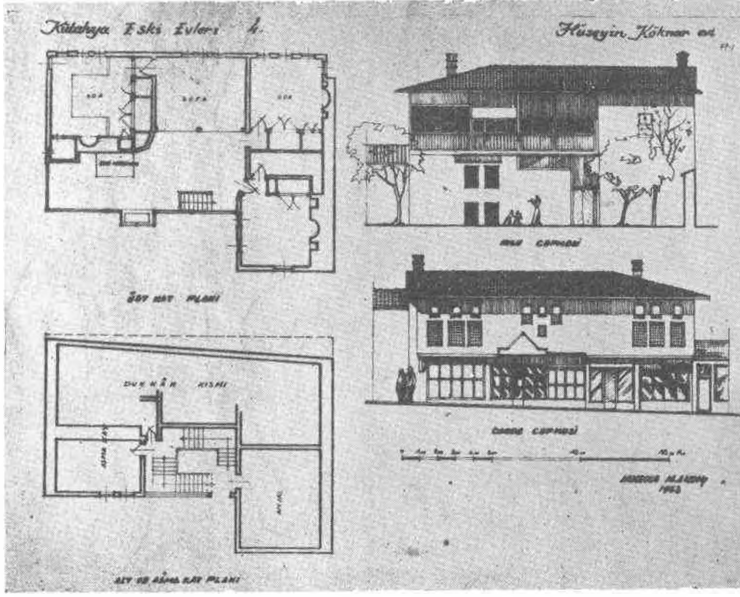
Res. 9 — Koşut evi sokak çephesi



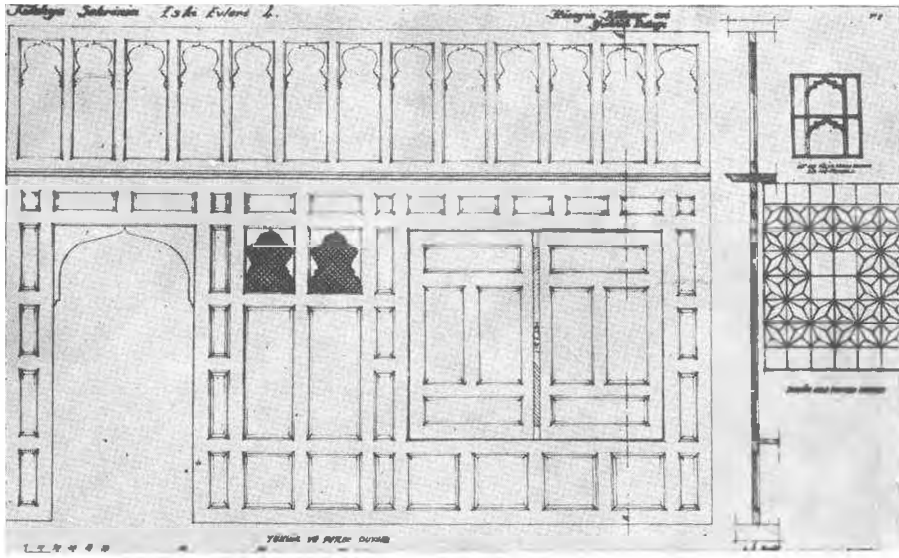
Res. 10 — Koşut evi sofasından



Res. 11 — Koşut evinden



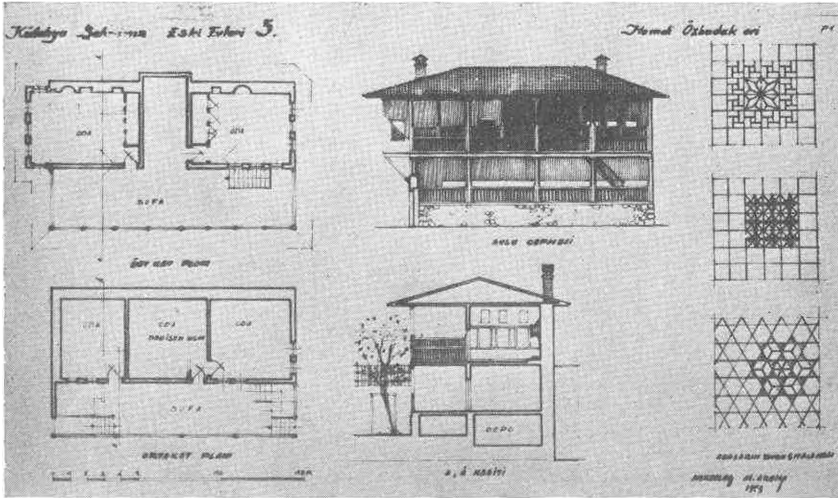
Res. 12 — Hüseyin Köknar evi



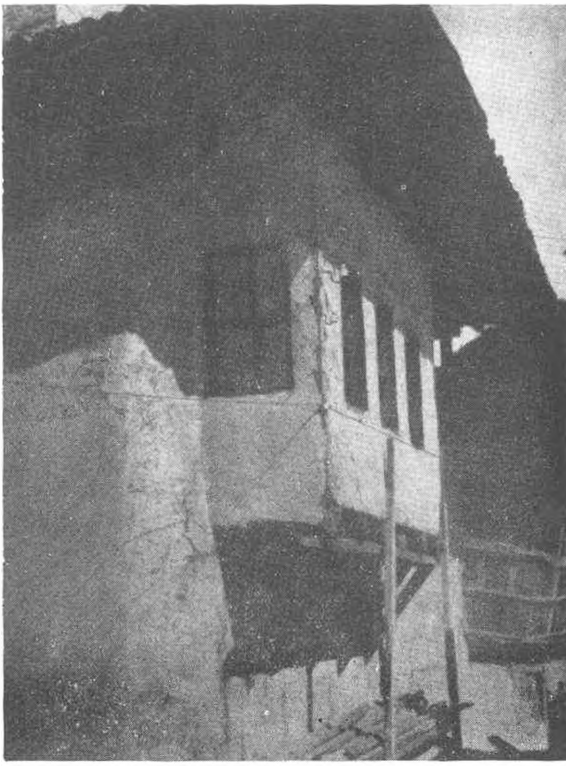
Res. 13 — Hüseyin Köknar evi yüklük detayı



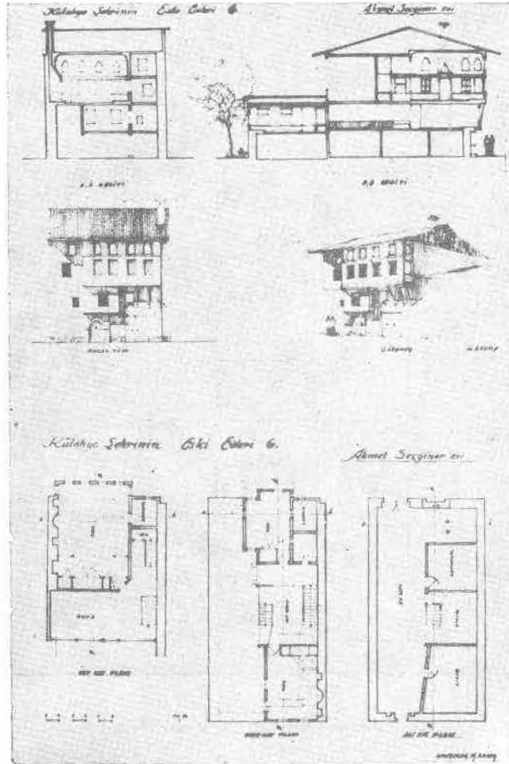
Res. 14 — Hüseyin Köknar evi sokak çehresi



Res. 15 — Hamdi Özbudak evi



Res. 16 — Hamdi Özbudak evi çıkması



Res. 17 — Ahmet Seçkiner evi.

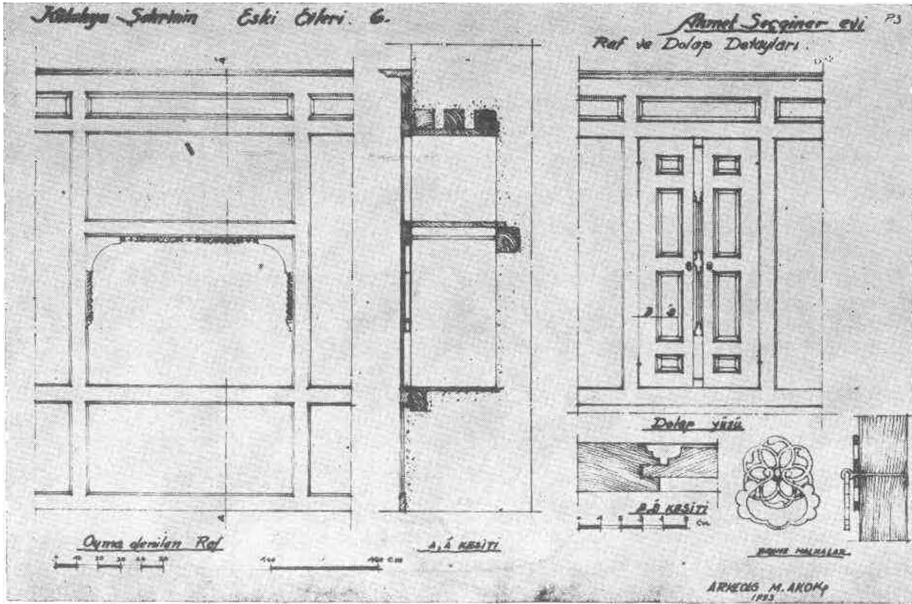




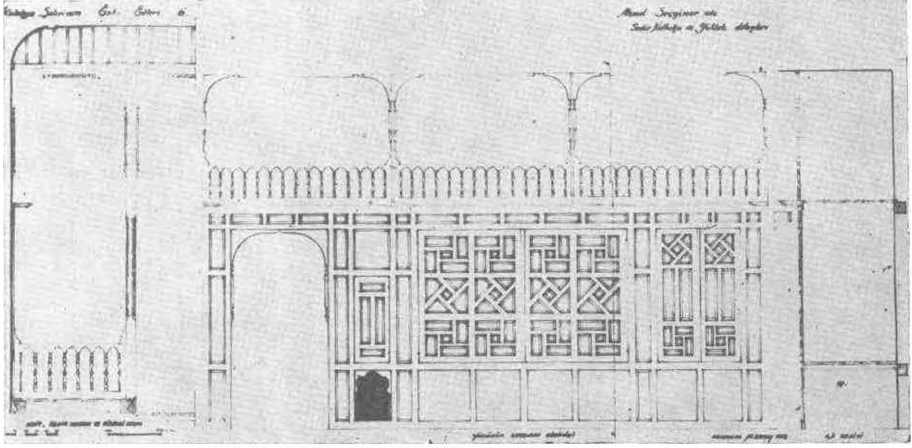
Res. 18 — Ahmet Seçkiner evinin Sokak cephesi.



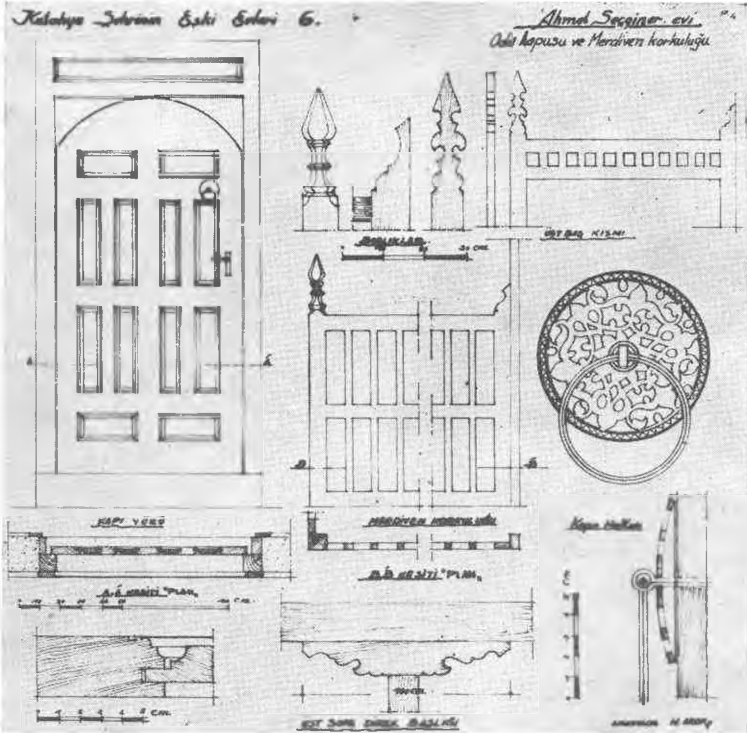
Res. 19 — Ahmet Seçkiner evinin bulunduğu sokak



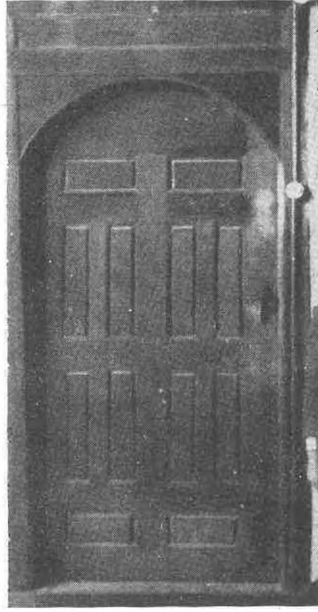
Res. 20 — Ahmet Seçkiner evinden



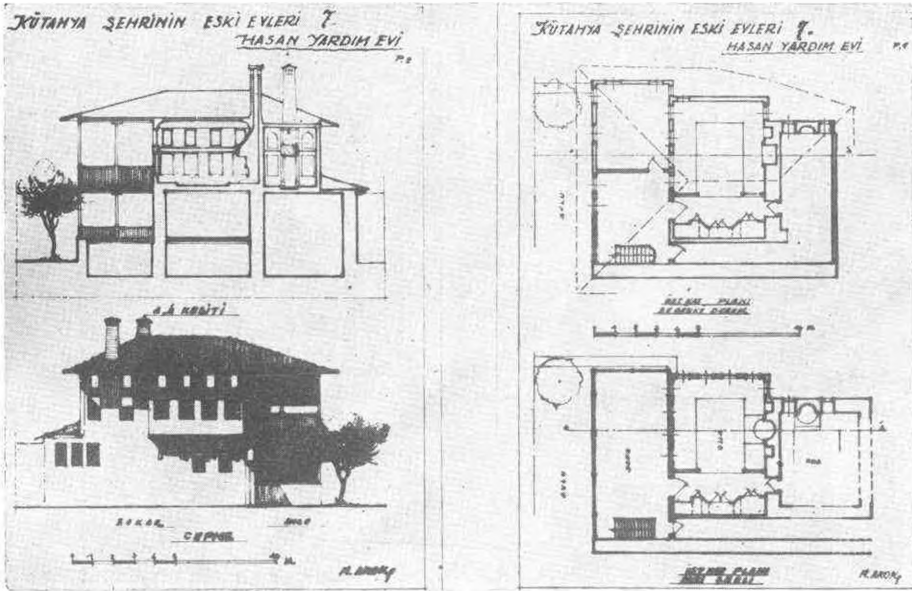
Res. 21 — Ahmet Seçkiner evinden



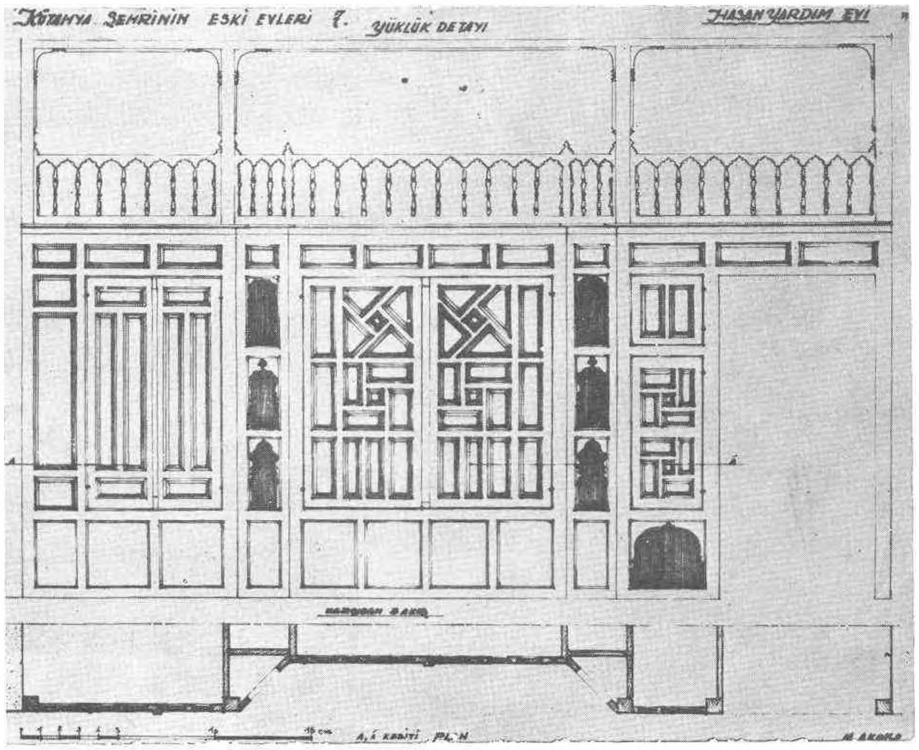
Res. 22 — Âhmet Seçkiner evinden



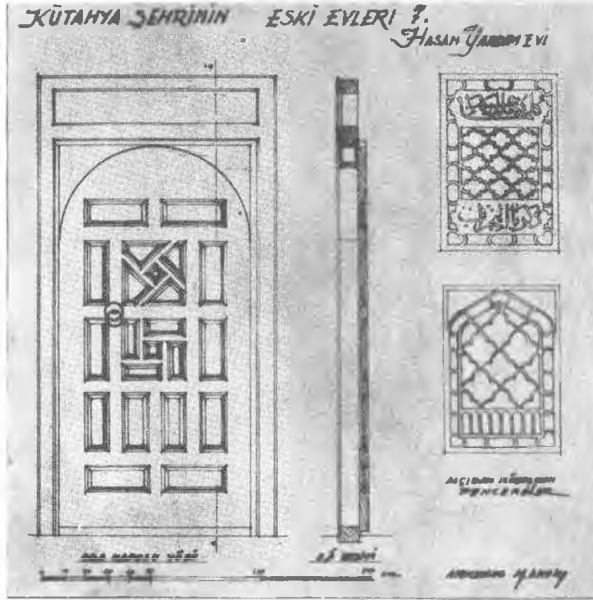
Res. 23 — Ahmet Seçkiner evi oda kapısı



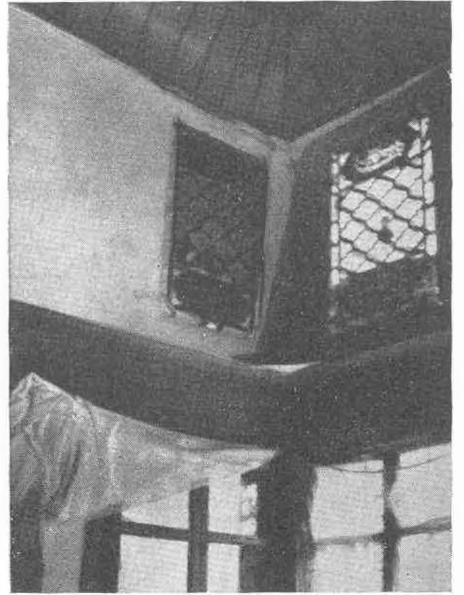
Res. 24 — Hasan Yardım evi



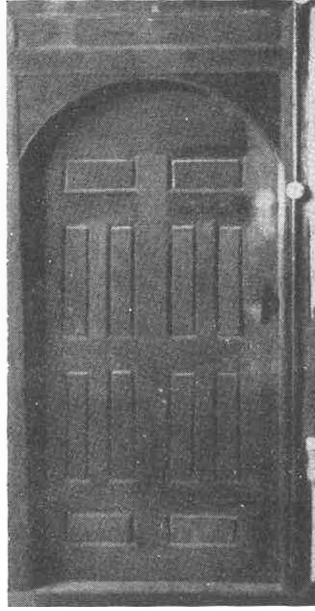
Res. 25 — Hasan Yardım evinden



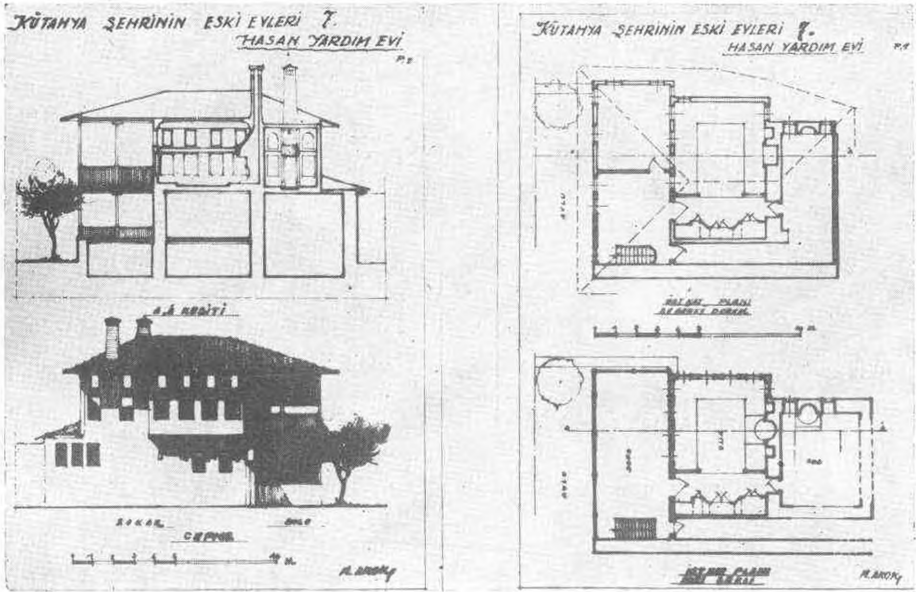
Res. 26 — Hasan Yardım evinden



Res. A. Seçkiner evinden bir köşe

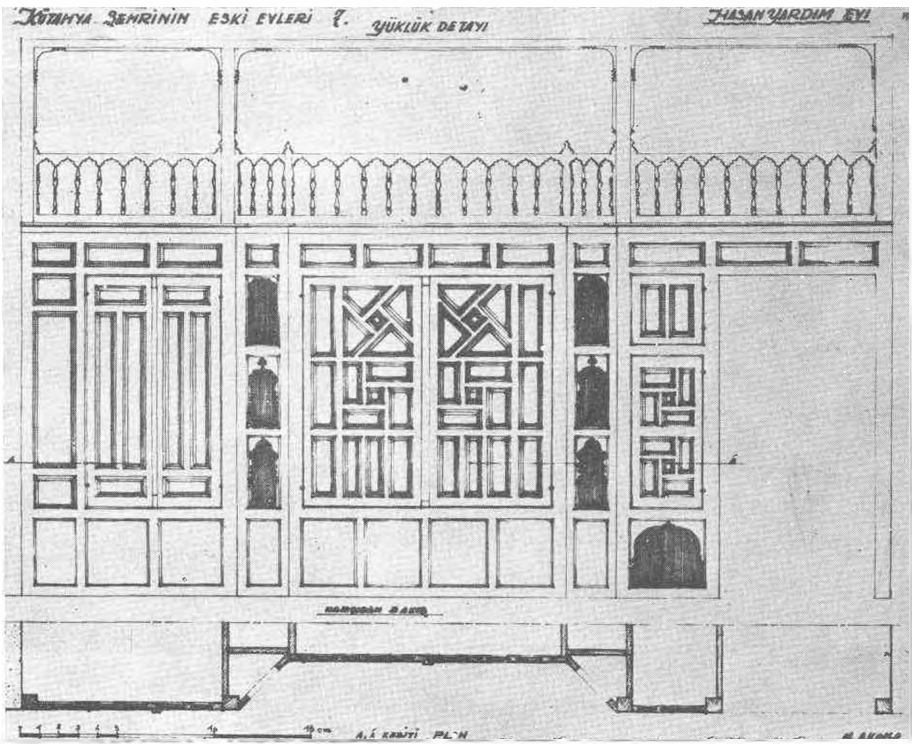


Res. 23 — Ahmet Seçkiner evi oda kapısı

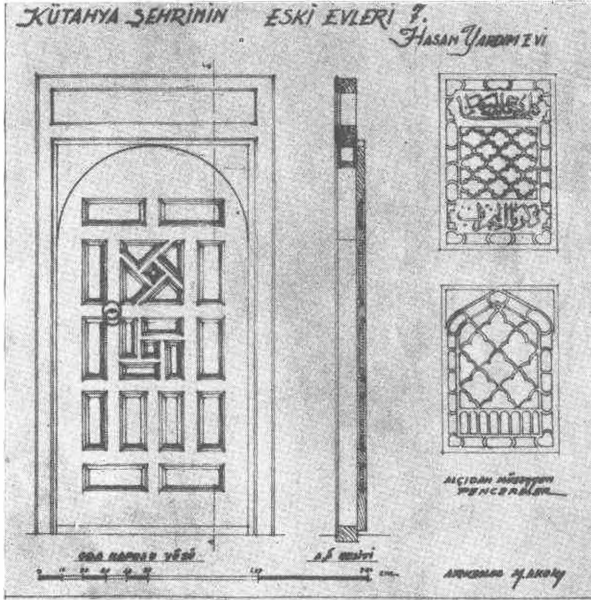


Res. 24 — Hasan Yardım evi

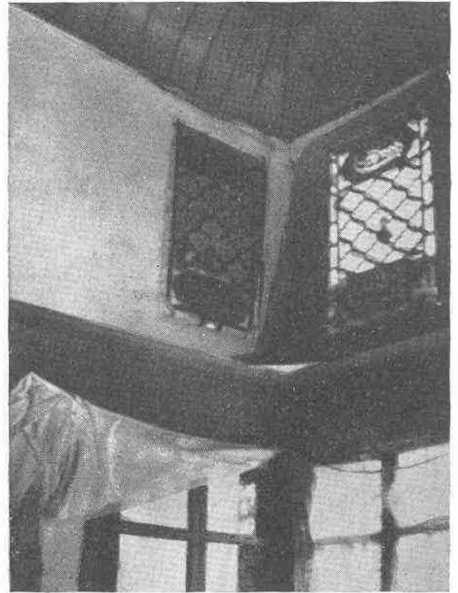




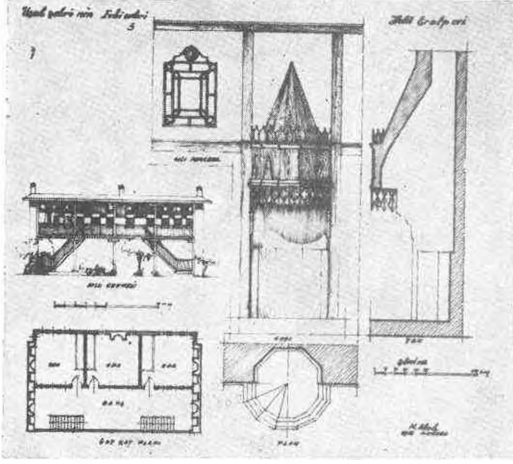
Res. 25 – Hasan Yardım evinden



Res. 26 — Hasan Yardım evinden



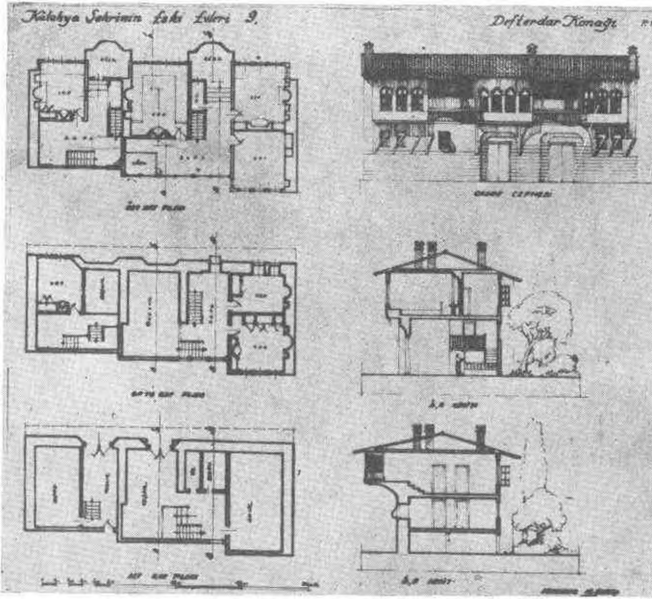
Res. A. Şeçkiner evinden bir köşe



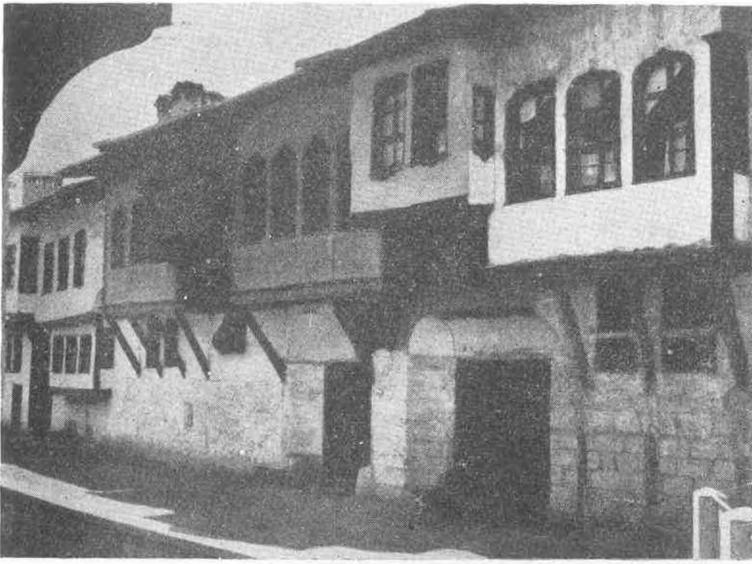
Res. 28 — Ahmet Aydın (Kocagöz zade) evinden



Res. 29 — Kocagöz zade evi ocağı.

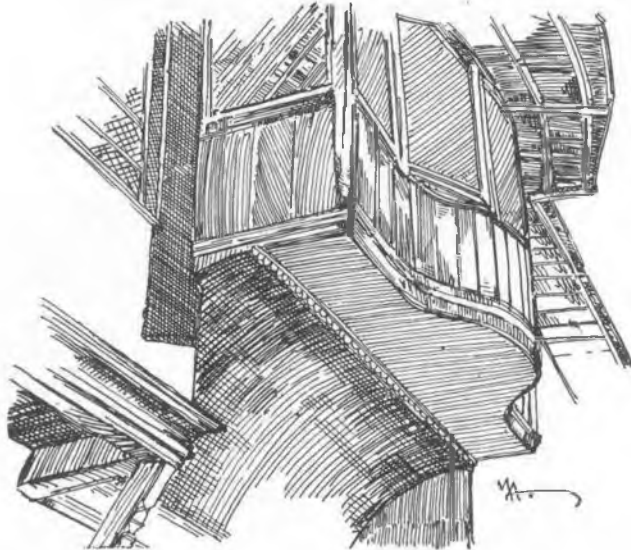
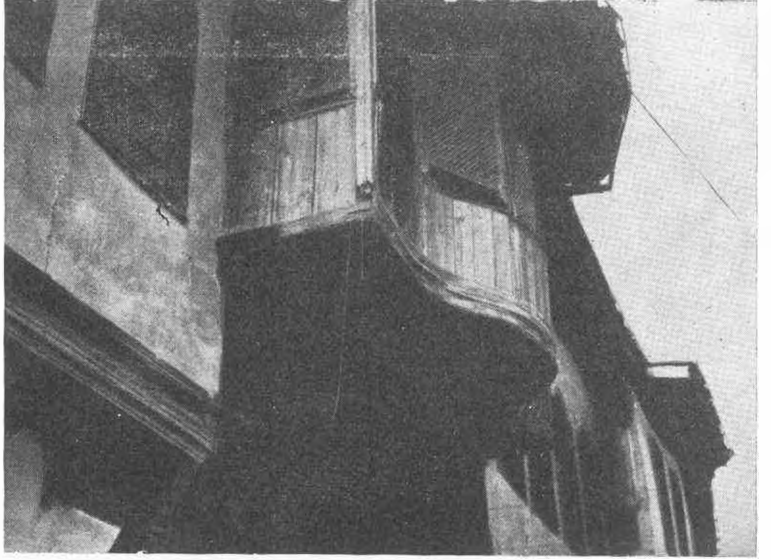


Res. 30 — Defterdar Konağı.



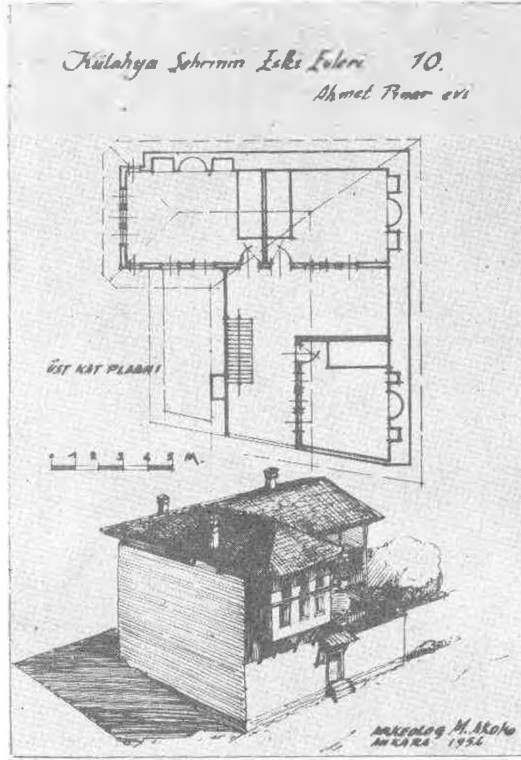
Res. 31 — Defterdar  
konağı çephesi

Res. 32 — Defterdar  
Konağı köşk Cumbası.



Res. 33.

K Ü T A H Y A



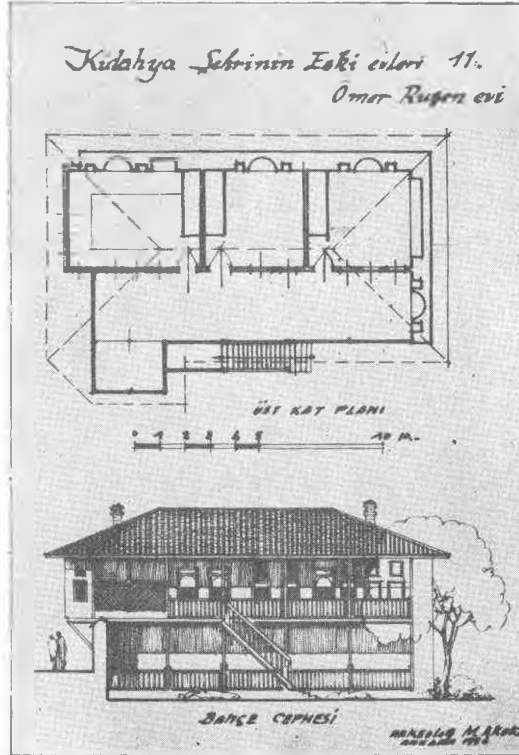
Res. 34 — Ahmet pınar evi.



Res. 35 — Ahmet Pınar evi cephesi



Res. 36 — Ahmet Pmar e'zi avlu caphesi.



Res. 37 — Ömer Ruşen evi.





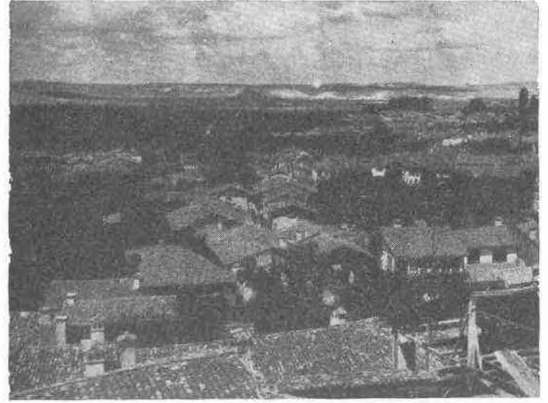
Res. 38 — Ömer Ruşen evi avlu ve sokak, cadde cephesi



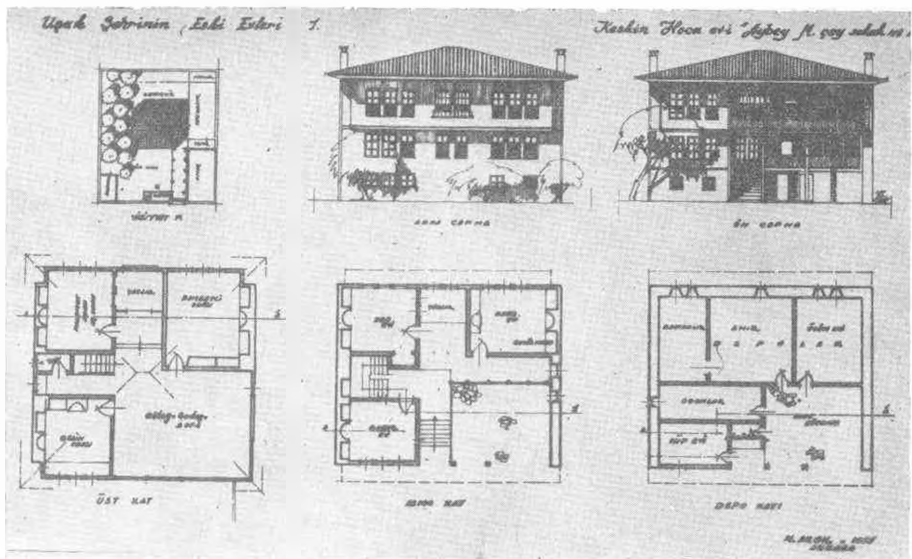
Res. 39 — Bir eski evin sokak cepheleri



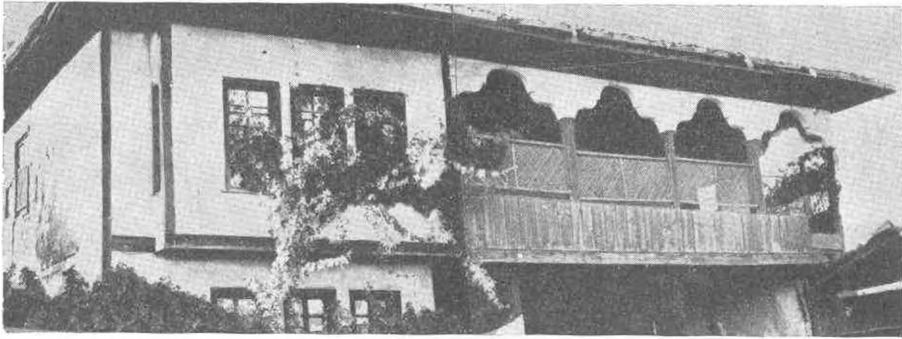
Res. 40 — Kale eteklerine yerleştirilmiş bir ev.



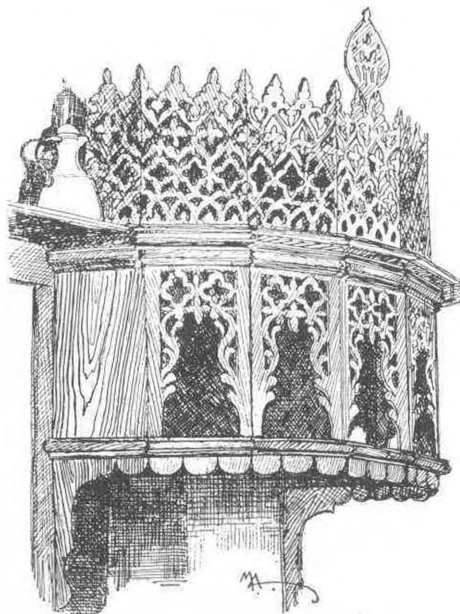
Res. 41 — Kütahya eski evleri yerleşme adaları.



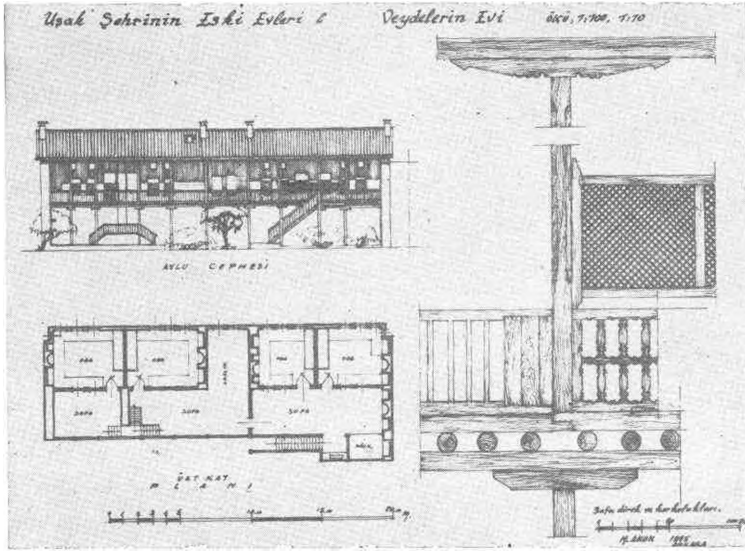
Res. 42 — Keskin Hoca evi.



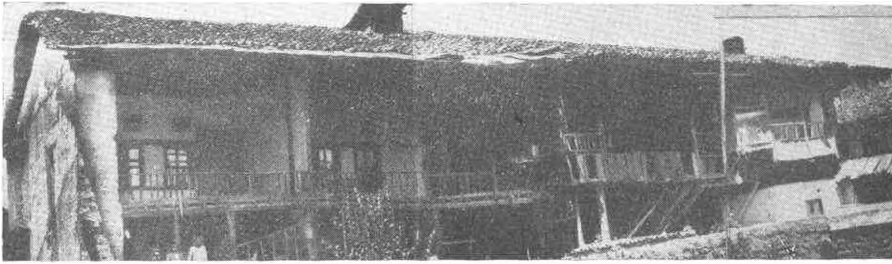
Res. 43 — Keskin Hoca evinin ön çehesi.



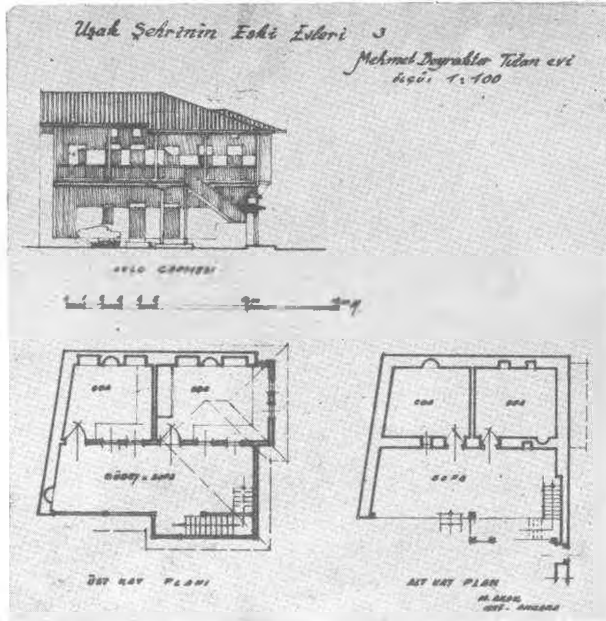
Res. 44 — Keskin Hoca evinden bir ocak.



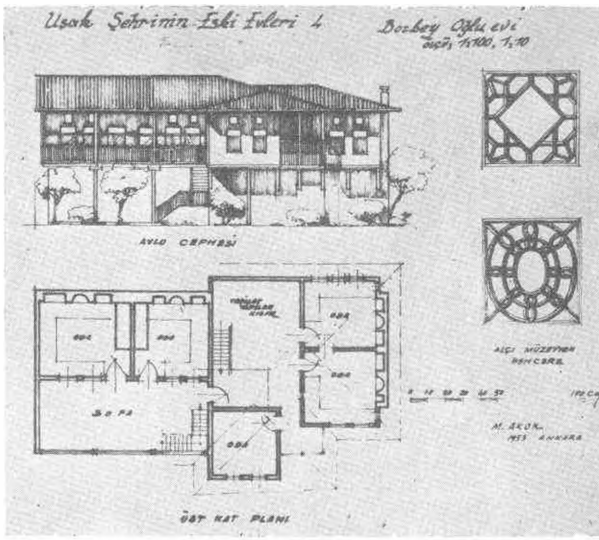
Res. 45 — Vaydelerin evi.



Res. 46 — Vaydeler evinin avlu cephesi.



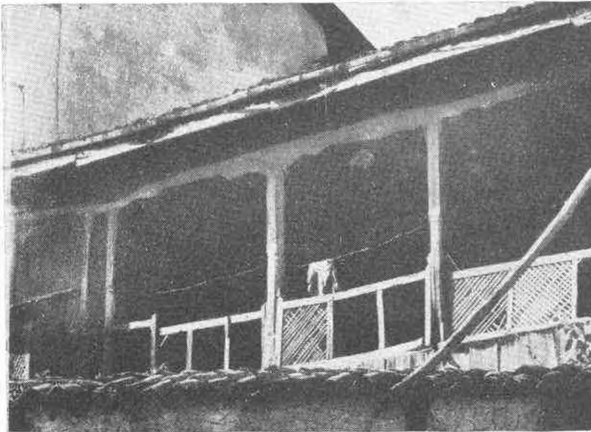
Res. 47 — Mehmet Bayraktar evi.



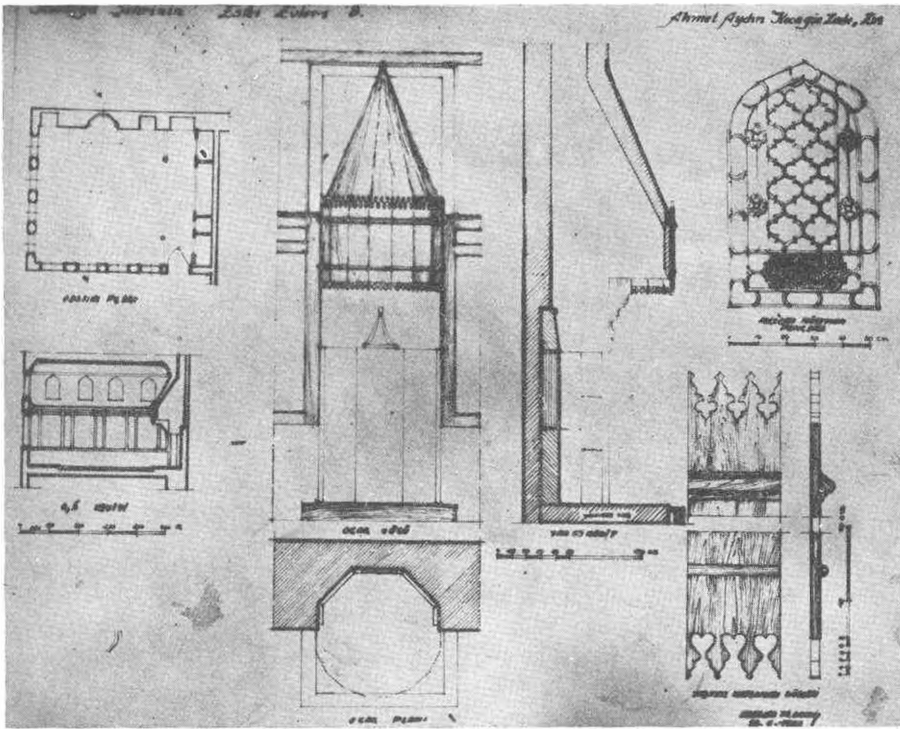
Res 48 — Bozboyođlu evi.



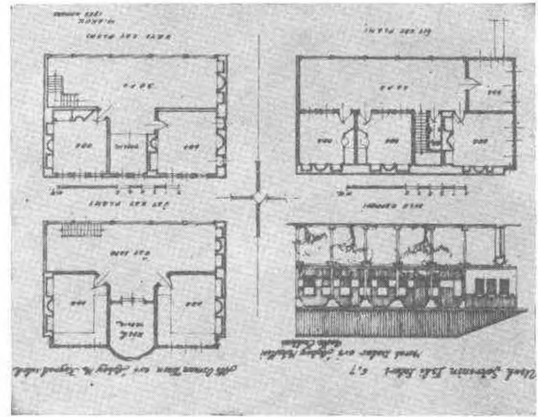
Res. 49 — Bozboyođlu evi cephesinden bir kısım.



Res. 50 — Bozboyođlu evi cephesinden bir kısım.



Res. 51 — Halit Eralp evi.



Res. 53 — Eski evlerden bir örnek.



Res. 52.

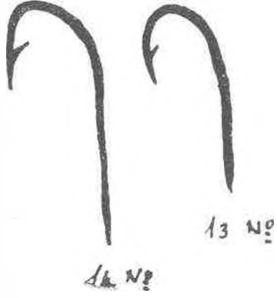




Ayvalık.



## Olta balıksılığı



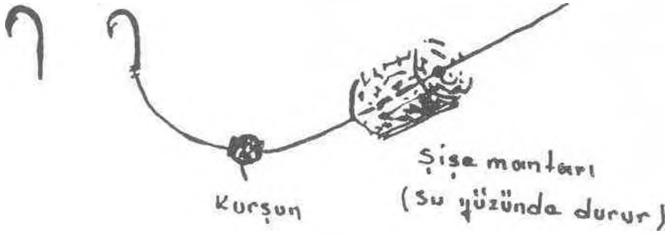
Mercez takımı:

Olta No:	Misina No:
14	40 (Tercih edilir)
13	50

## Kargı avcılığı

Isparox - Kupa  
(Sinek oltaıyla)

Misina No:

25  
30

Yem olarak - Hamsi - Kalamar - Sübya - Sardalya - Minkye  
takılır

100 no. 1 mm esittir  
(Misina sapları için)

Sahilden avlama (Siyirtme)

Çıpra için (Zokalı)

Misina No:

40

50

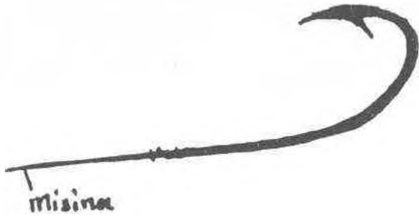


Levrek ve Lüfer için (Kurşunsuz) - Olta kesen balıklar

Olta Misina No:

5-9 No. 60

90

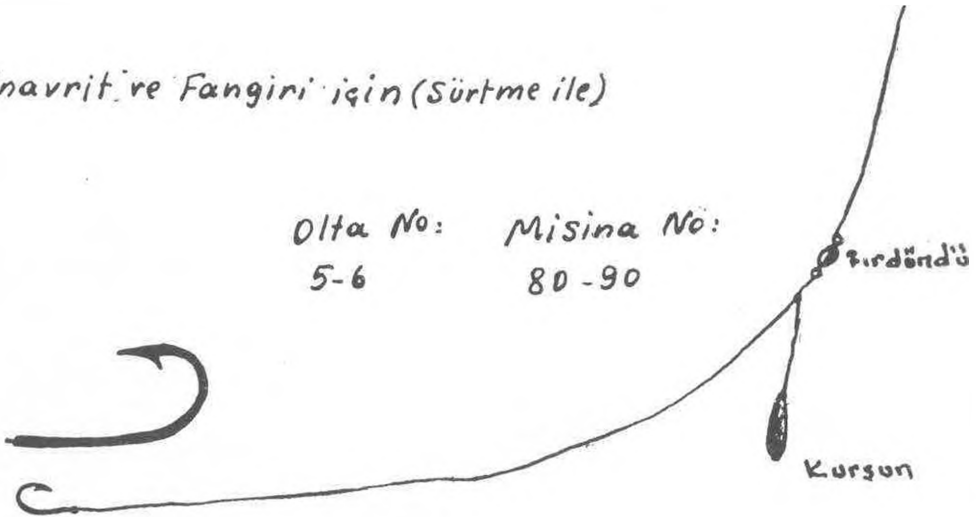


Sinavrit ve Fangini için (Sürtme ile)

Olta No: Misina No:

5-6

80-90



Olta mesafesinden 11 kulak mesafeye bedenli kurşun takılır.

Gece ve gündüz  
avlanabilir

Motor pesinden sürme

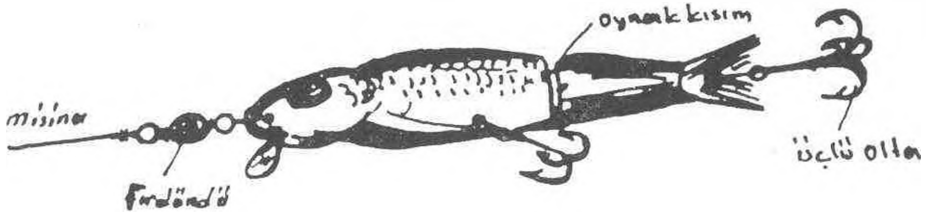
Kaşıkla-Yakıncı balıkla



Olta Misina

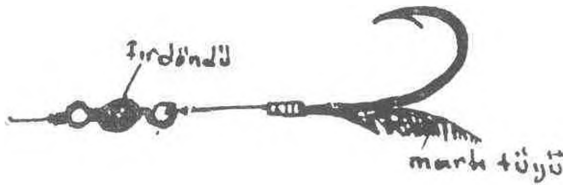
8 70-80

En elverişli  
5-4-3 No.11 kaşık



Sabah akşam Sınavrit-lüfer-Orkinos-palamut  
avlanır.

Motor pesinden martı tüyü ile avlanma:



Olta Misina

8-9 No. 60-70 No.

Sabah Akşam Lüfer - Orkinos - Palamut (Derin s.)  
Sahilden : Levrek - Sınavrit avlanabilir.

Kepçe.

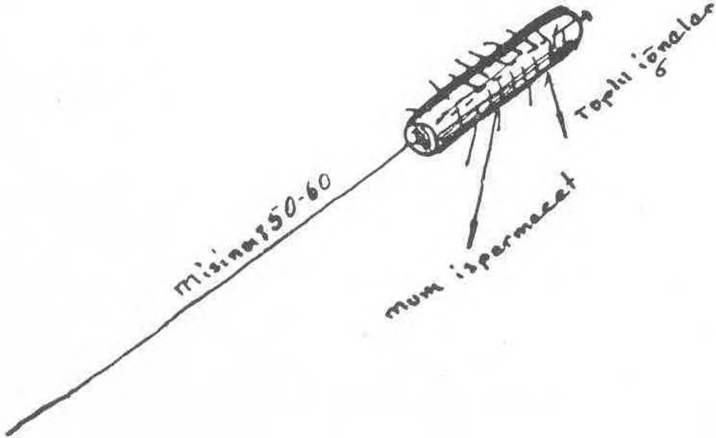
30-40 cm.

—250-300—



Kepcenin dip gözleri  
5-6 mm. üst gözler  
18-20 mm dir.

Şirti .(Kalamar avlamak için)





Paragatsilik.

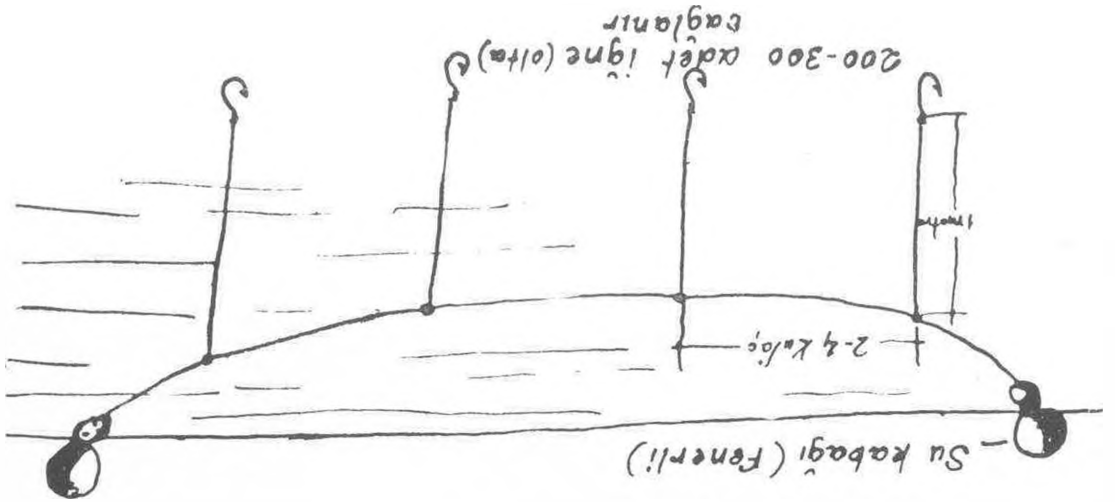


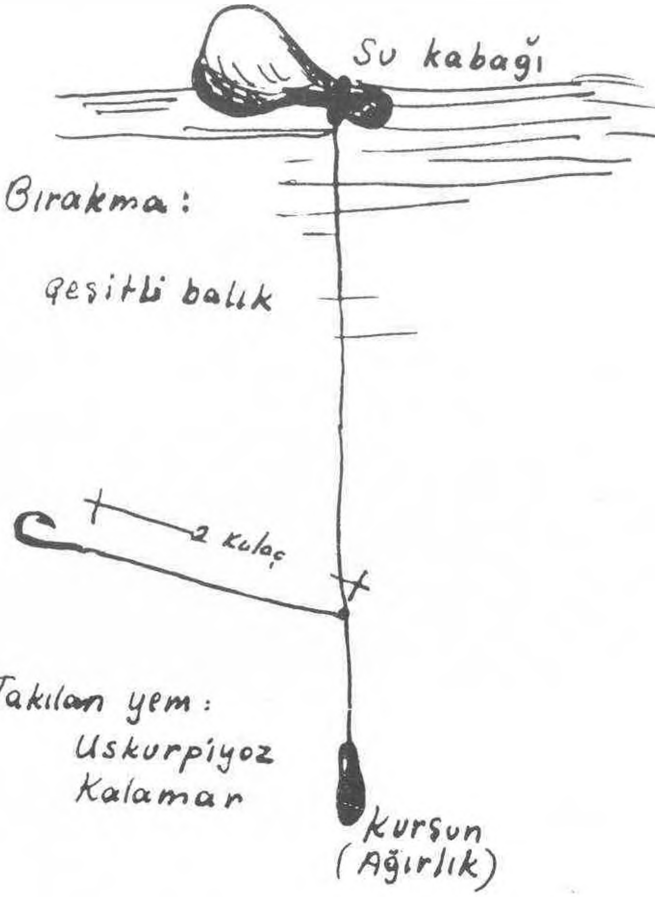
Ota No: 14  
 Iplik No: 24  
 Missina No: 40-45  
 (Bu paragatta 300 igne (olta) kullanilir)  
 Avlanan baliklar: Gipra - Mercan (Derin suca)

Kalin paragat

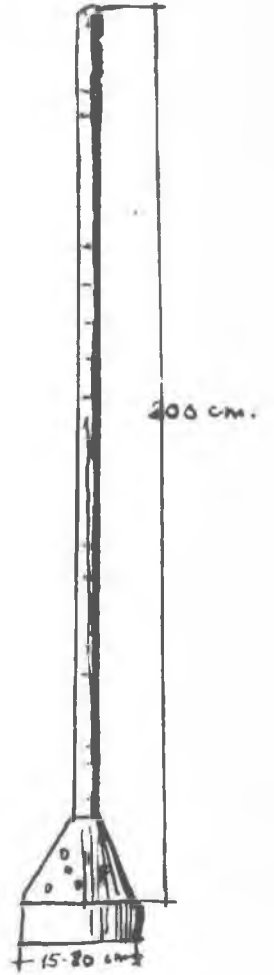
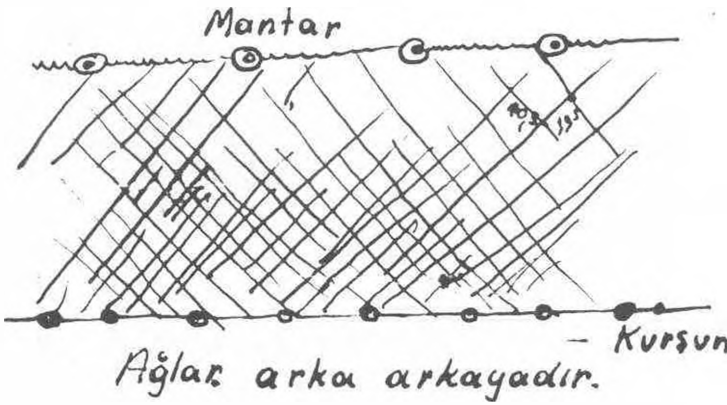


Ota No: 8-7  
 Iplik No: 16  
 Missina No: 80-90  
 (Bu paragatta 200 igne (olta) kullanilir)  
 Avlanan baliklar: Sinaurit - Orkoz - Fangiiri





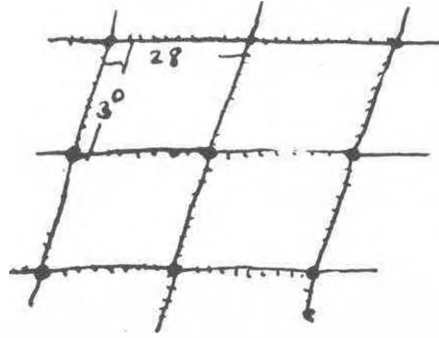
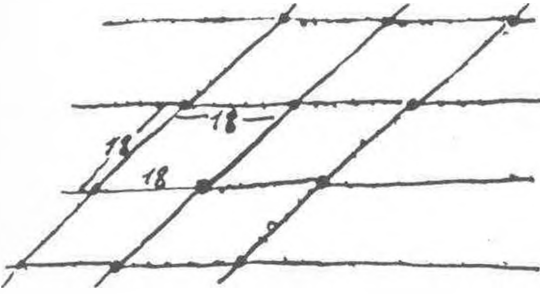
Voliciler : (Aysız gecede avlanır)



## Ağcılık:

Balığın cinsi : Ağ gözü: İplik No:

Kupa	18 mm.	2 (Naylon)
Kefal	28-30 mm.	2-3 "
Çipra	28-30 mm.	3 "
Sinavrit	22 mm.	3 "
Barbun	18 m.m.	



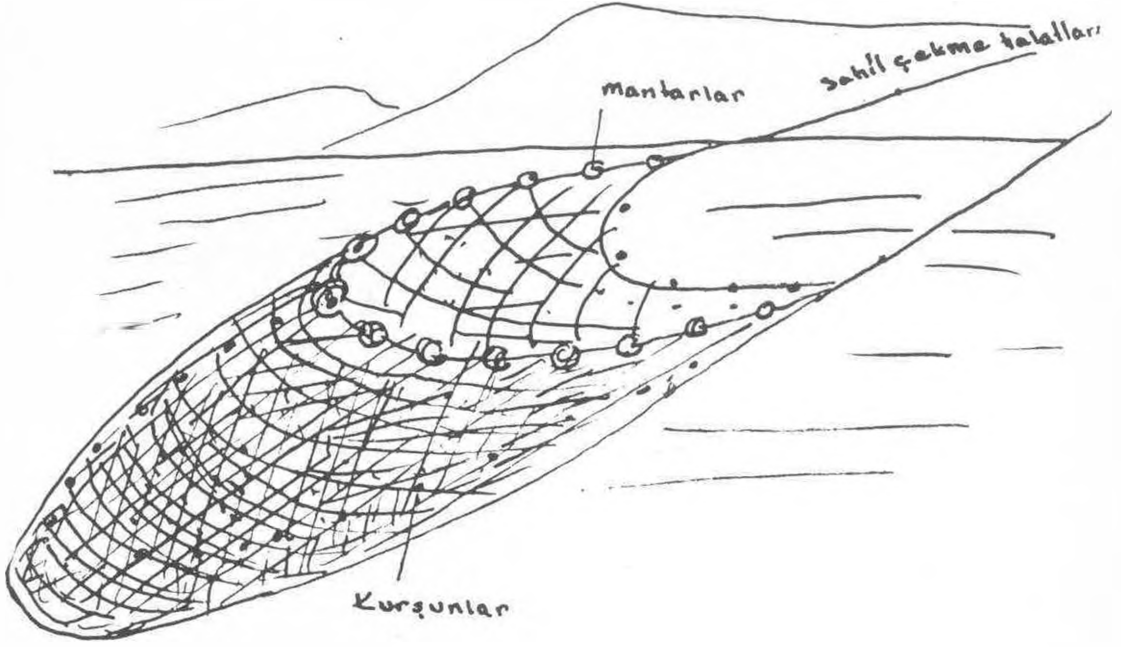
Ağların altına kurşun üstüne mantar takılır.

Kara Hırıpçılığı :

Çeşitli balık için

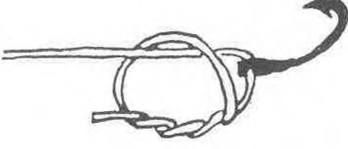
Ağ gözü

8-12 mm



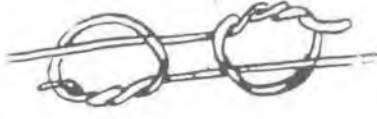
Sahil çekme halatlarının her kolundan  
4-5 kişi tarafından çekilir.

oltalara misino bağlamak

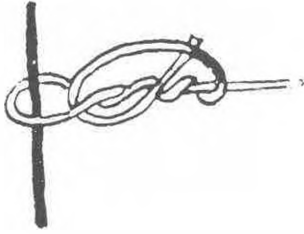


Delikli olta

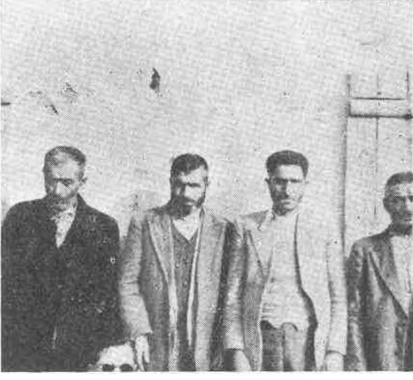
düz deliksiz  
olta



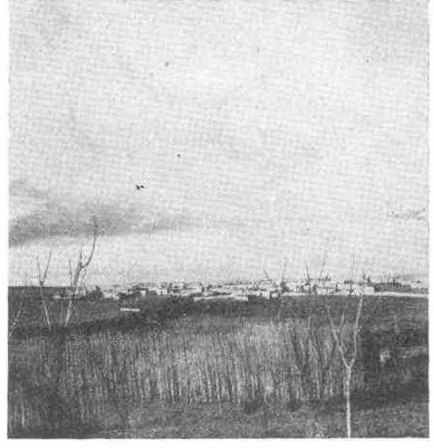
Misinayı misinaya  
bağlamak







Res. 1 — Barak ağaları.



Res. 2 — Barak Nahiyeye merkezi (köyün bir kısmı)



Res. 3 — Kargamış harabesi



Res. 4 — Kargamış Kıyısında Fıratın bir parça.



Res. 5 — İbrahim Çakır  
Baraklar Tarihinin sahibi.



Res. 6 — Güllü bacı. (İlbeğli Türkmenlerinden.  
Sağ kolunda ve dudagında döğmeler vardır).



Res. 7 — Karacurun'da gelin alayı.



Res. 8 — Düğün alayı ve Ozanlar.



Res. 9 — Düğün alayından dağılış



Res. 11 — İhtiyar bir Alevi (Anay Pazar).



Res. 10 — İdris kâhya. Eski Barak Sergerdelerinden (birkaç sene evvel ölmüştür.) (Ağca köy)



Res. 12 — Akkâş Ağa Güney Türkmenle-  
rinden Bağlama çalgıcısı (Gaziantep)



Res. 13 — Zurna ve saz çalan iki ozan  
(Apdallar). (Gaziantep Battal köyü)



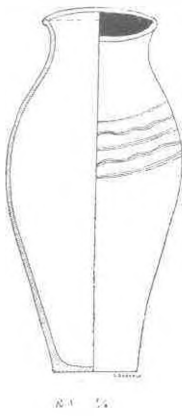
Res. 14 — Üç Barak Kızı düğünlük kıyafetleriyle.



Res. 15 — Barak kadınlarından bir grup.  
Düğünlük kıyafetleriyle.



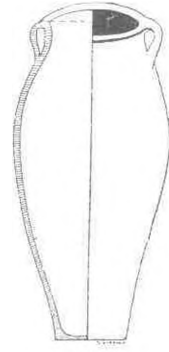
Res. 16 — Bir Tırâmen kadını (Kargamış)



R. 1 1/2

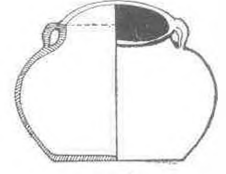
MÜŞ KÜPÜ

Res. 1 — Muş küpü



R. 2 1/2

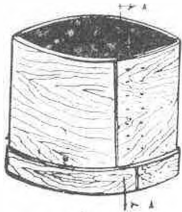
MÜŞ KÜPÜ



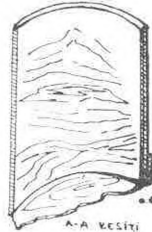
R. 3 1/2

Z A B

Res. 2 — Muş küpü - Zah



R. 4 1/10



A-A KESİTİ

ÇEMBERLİ (GOD veya KILE)

Res. 3 — Çemberli (god veya kile)



-BU KÜZESİ (oyma ahşap)

R. 5 1/6



HAMUR TEKNESİ (oyma ahşap)

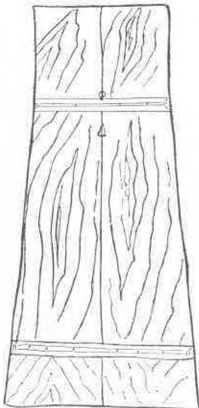


R. 6 1/6

BÜZEL DUA (YIĞANG) EV İSTİKLAKI

Res. 4 — Su küzesi (oyma ahşap) Hamur teknesi (oyma ahşap)

DÖVEN (GEMİ)



R. 7 1/10



Res. 5 — Döven (Gem)

TAPAN KÖLEKİ

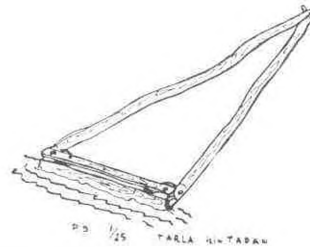


R. 8 1/25



1/5

KORZEVEL

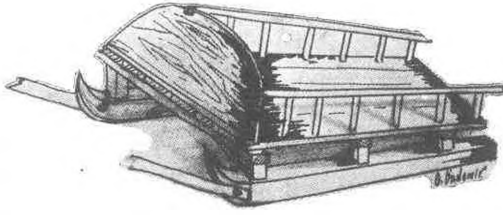


R. 9 1/25

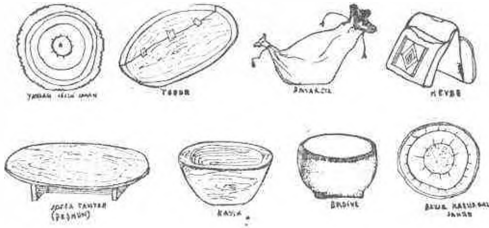
TARLA İÇİN TAPAN

Res. 6 — Tarla için tapan kolları, korzevel ve tapan

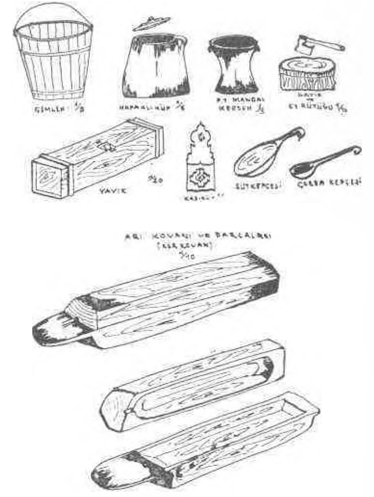




Res. 13 — Yük kızıağı.

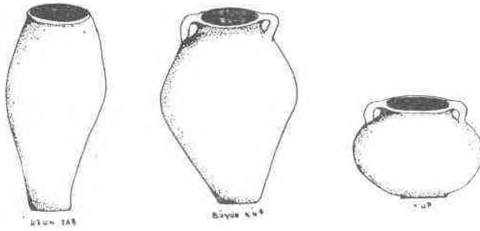


Res. 14 — Sahan, tepur. Davarcık, heybe sofra tah-tası kayık, bediye, bakır, kaburgalı sahan



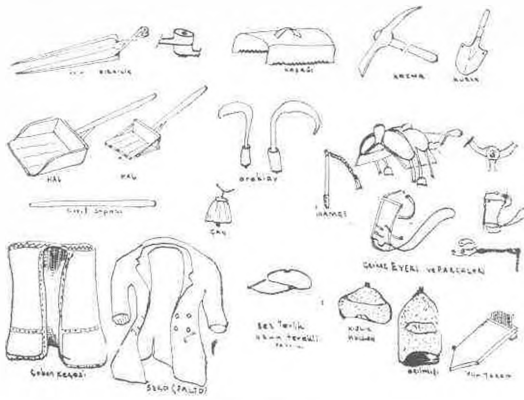
Res. 16 — Güzelova (Tufanç Köyünde şimdi kullanılan ev eşyaları.

Çemlek, kapaklı küp, mangal, satır ve et kütüğü, yayık, kaşıklık, süt kepcesi, çorba kepcesi, arı kovanı ve parçaları

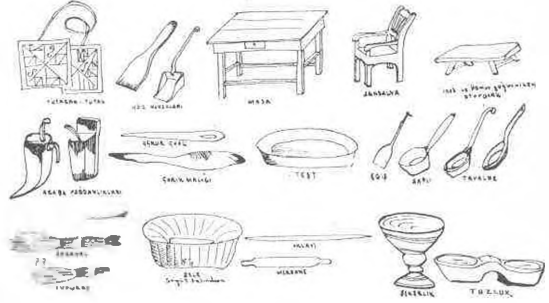


Res. 15 — Uzun zap, büyük küp, küp





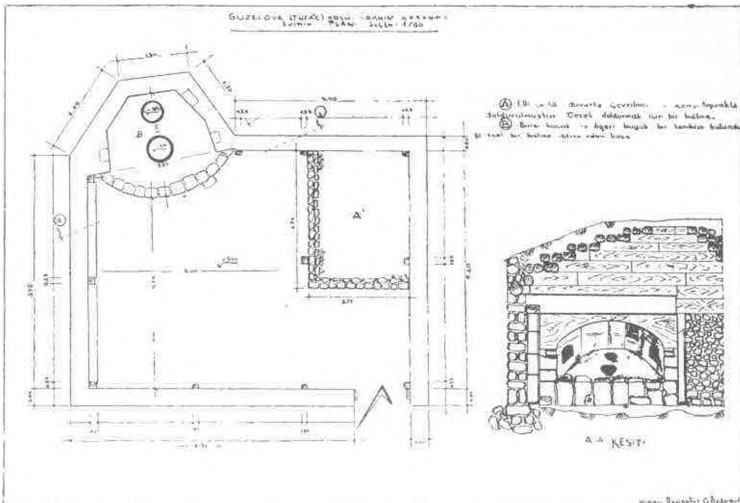
Res. 17 — Kırkılık, kaşağı, kazma, kürek, hal, orak, çerkez eğeri ve parçaları, cirit sopası, çan çoban keçesi seko (paltu), bez terlik, külah, yün tarağı



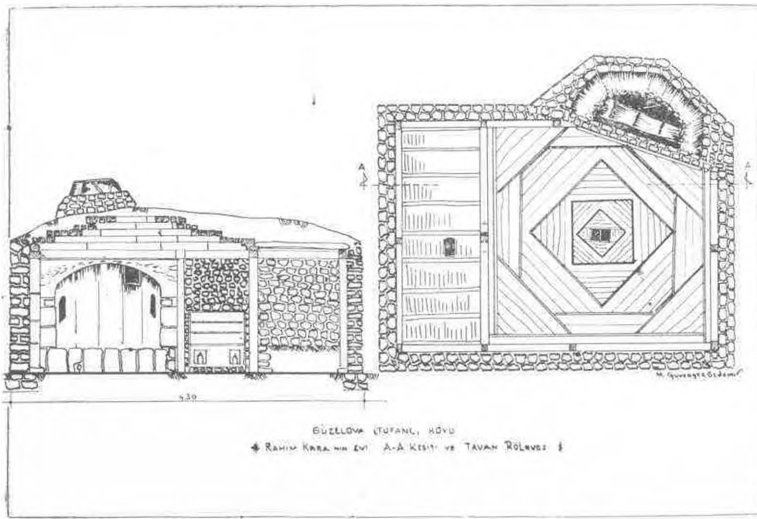
Res. 18 — Tutak, köz kürekleri, Masa, sandalya, oturak, yağdanlık, uçkur çöpü, çarık malığı, teşti. Eğiş, saplı tava, sakavel, süpürge, sele, oklava, merdane şekerlik, tuzluk.



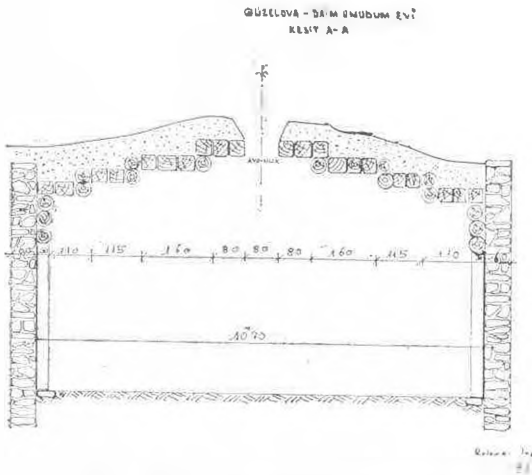
Res. 19 — yalak, yağ küleği, tokaç, toprak testi, bakraç, yamak, legan, çöp kutusu, güğüm, kazan, ibrik, su taşı şeker ve tütün kıracak, sinc, lenger, cezve, kolçak, eldiven, yün torba, balta, keser, tokmok, mengirdek.



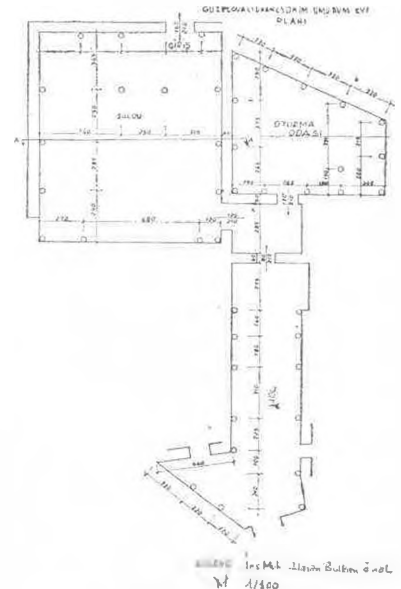
Res. 20 — İbrahim Karanın ev plânı.



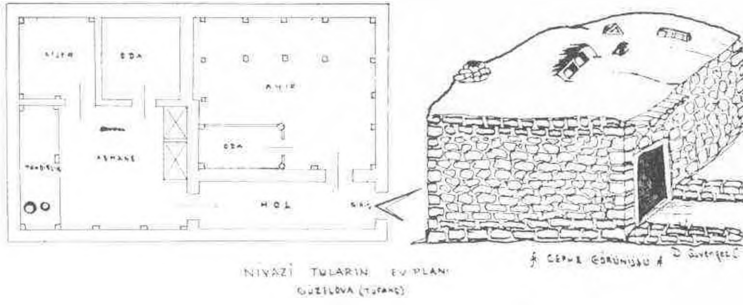
Res. 21 — Rahim Karanm evi.



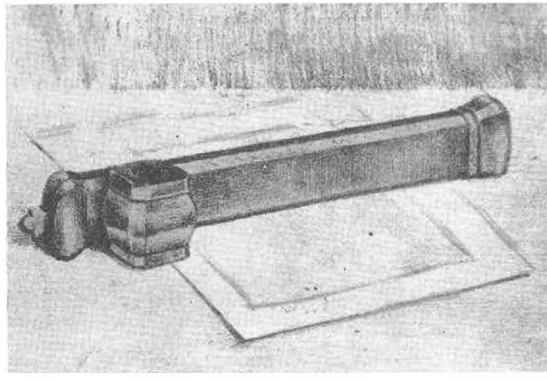
Res. 22 — Daim Umudum evi kesiti.



Res. 23 — Daim Umudum evi planı.



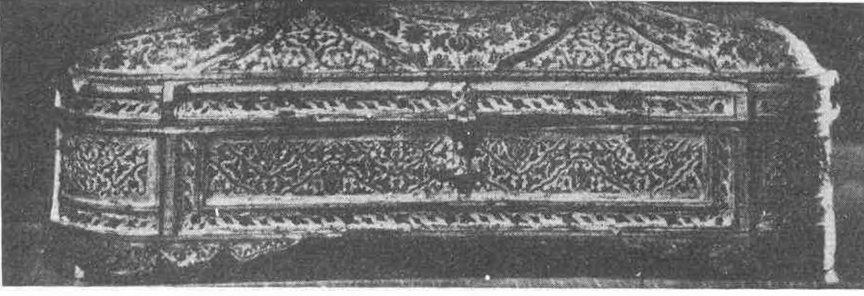
Res. 24 — Niyazi Tuların ev plânı.



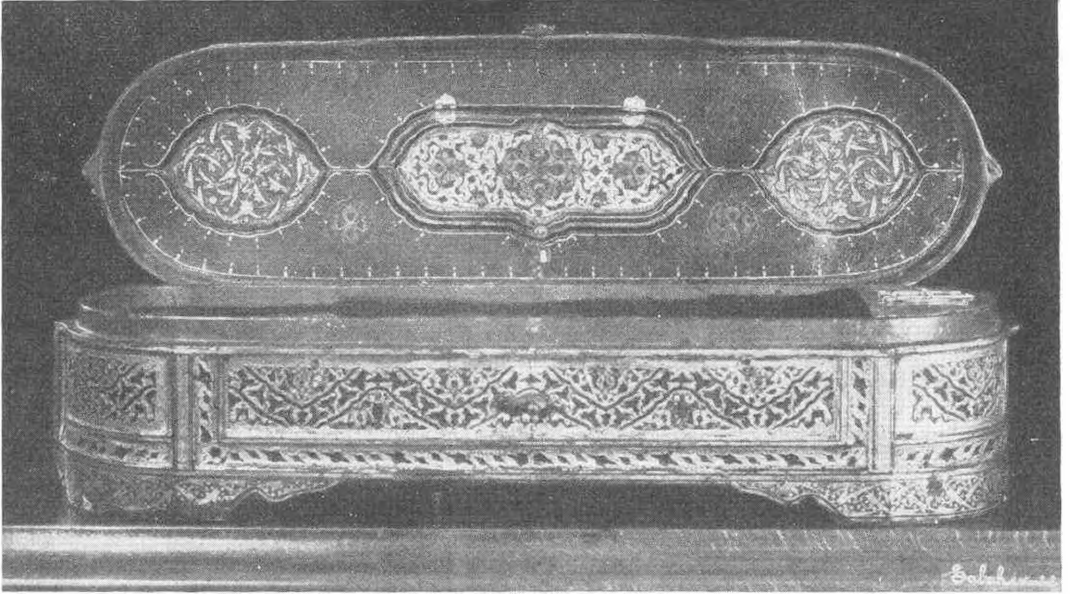
Res. 1 — Ressam Üsküdarlı Ali Bey Kalemi ile divit (1913)



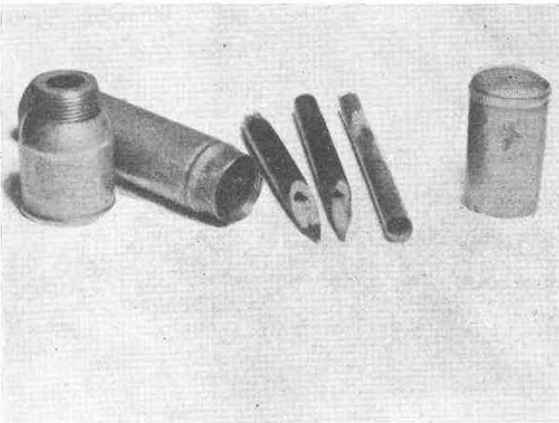
Res. 2 — Şeyhülislâm İbni Kemal kütüphanesinde masa üzerinde Diviti ile Aşık Çelebi Şairler tezkiresi. Ali Emiri K. N 772.



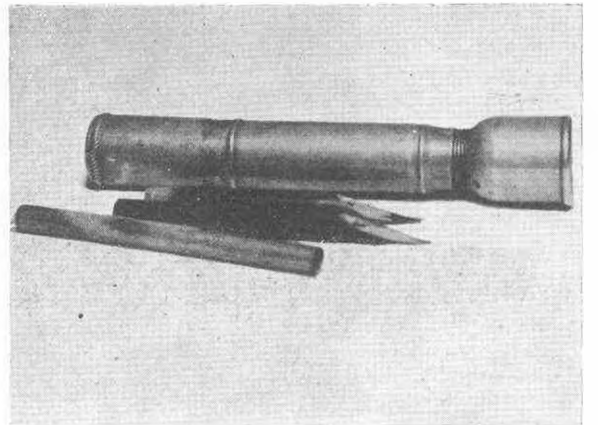
Res. 3 — Şemseli yazı diviti mahfazası (Y. Mimar Refik Gökkan koleksiyonundan)



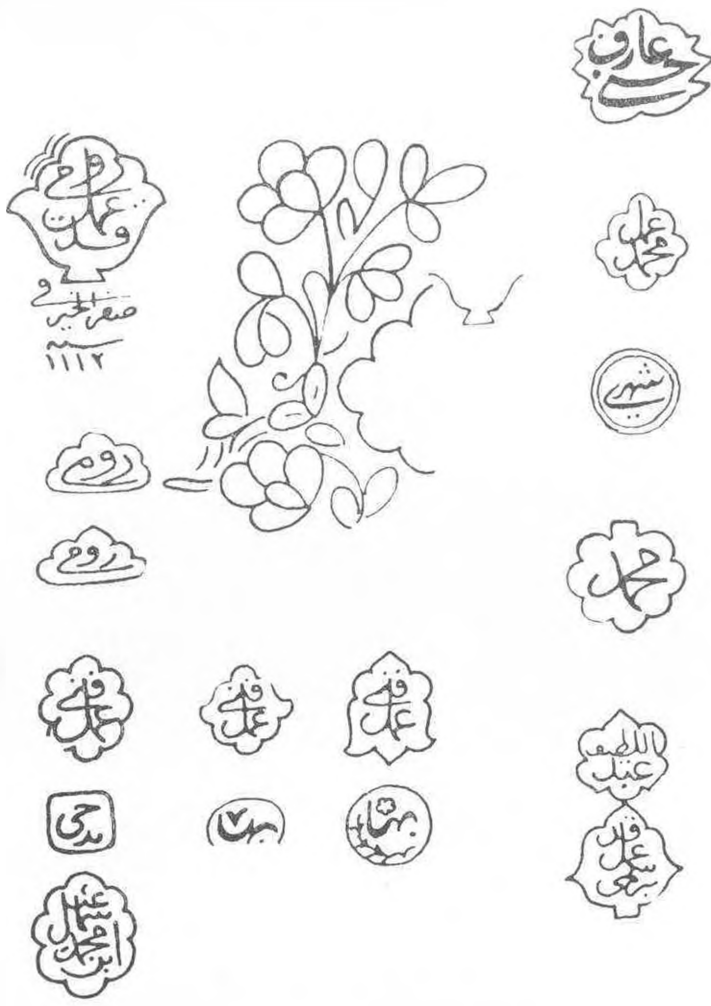
Res. 4.



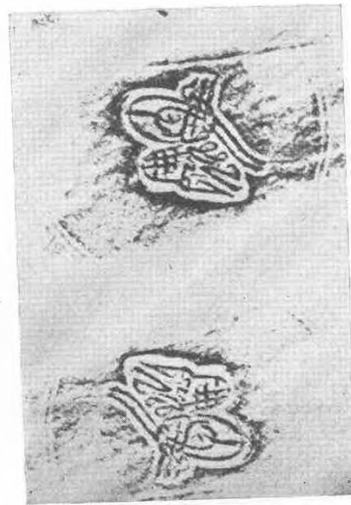
Res. 5.



Res. 6 —



Res. 7 — Gördüğümüz divit imzaları.

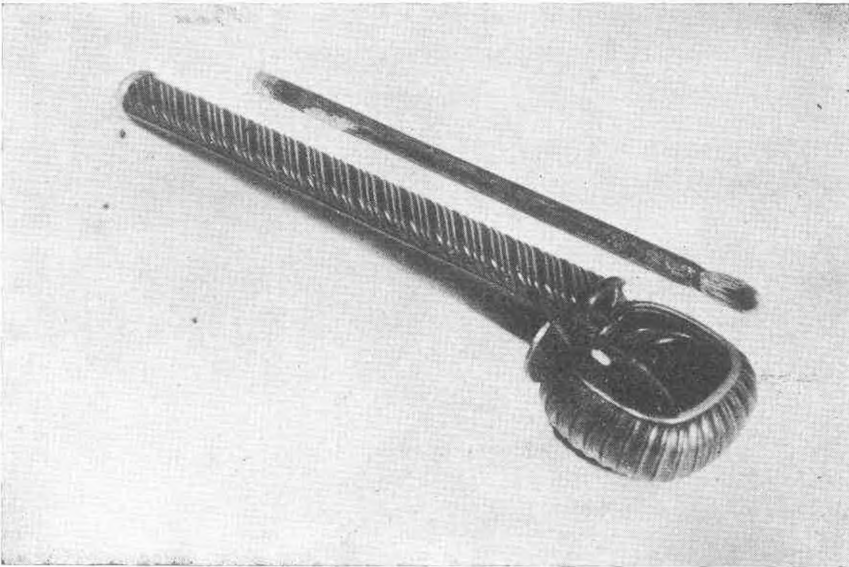


Res. 8 — Pirinç üzerine tuğral tasdik damgası.





Res. 9 — Halıcılarda Divittar Mehmet Efendi camii minaresi, Çeşmesi, Künbedi 1931



Res. 10 — Çin Cep diviti. Büyük elçi Dr. Hulüsi Fuat Tugay koleksiyonundan.



Res. 1 — Konya Gazetesi şeklinde dokunan halı  
(Konya Mevlâna Müz. Emv. No: 836)

ما زور باد اما افتاد و زلفه با تاجك نساك تقدیر الی  
 اور و ما سائل و غیره شروع مغرب و در اول اواخر تقدیر الی



Sr. EXCELLENZ DEM GENERALFELDMARSCHALL  
 PAUL VON BENECKENDORFF UND VON HINDENBURG



MASURIEN

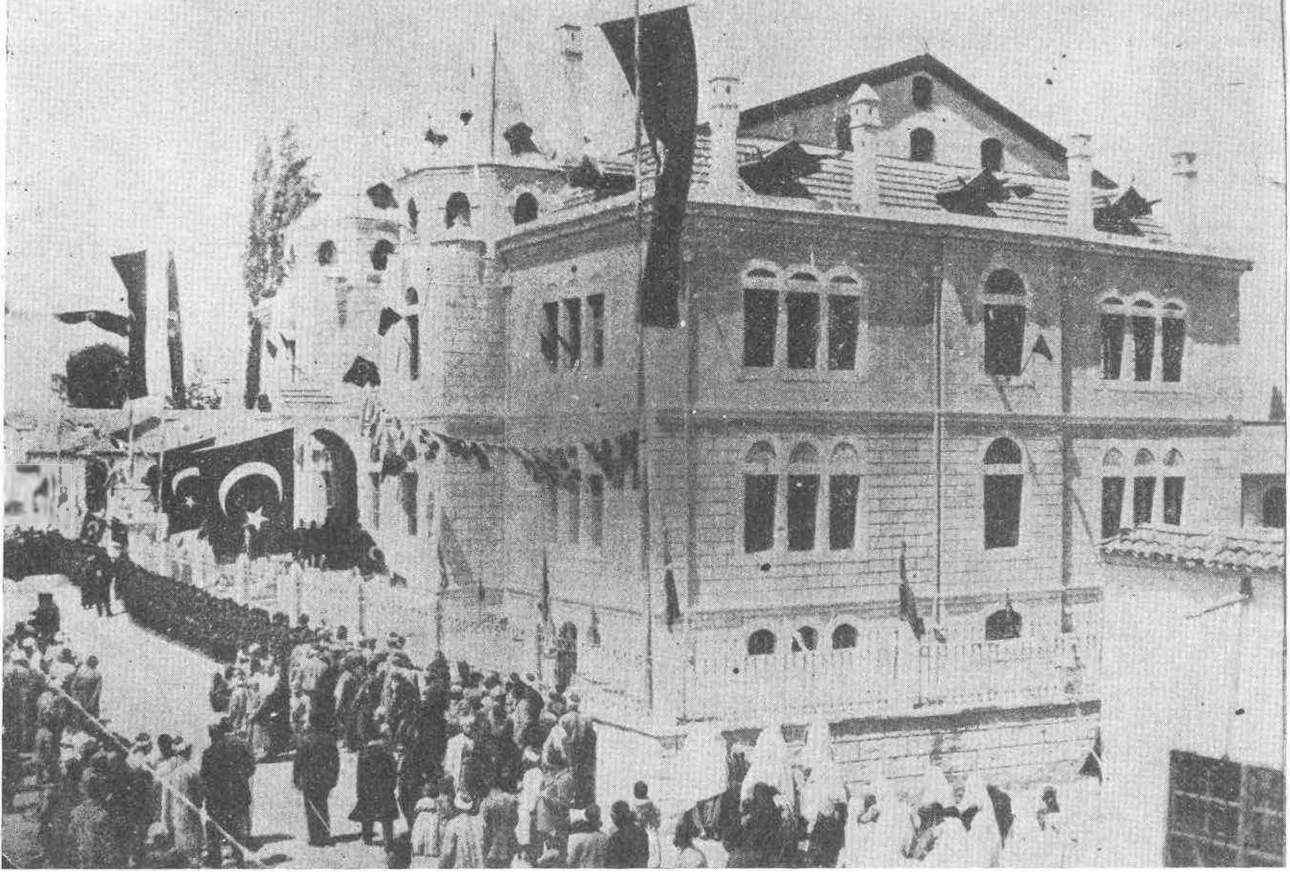


AUS DANKBARKEIT FÜR DIE GROSSEN SIEGREICHEN SCHLACHTEN  
 BEI DEN MASURISCHEN SEEN. GEWIDMET VON DEN EINWÖHNERN  
 DER STADT KONIA IN KLEIN - ASIEN 1915

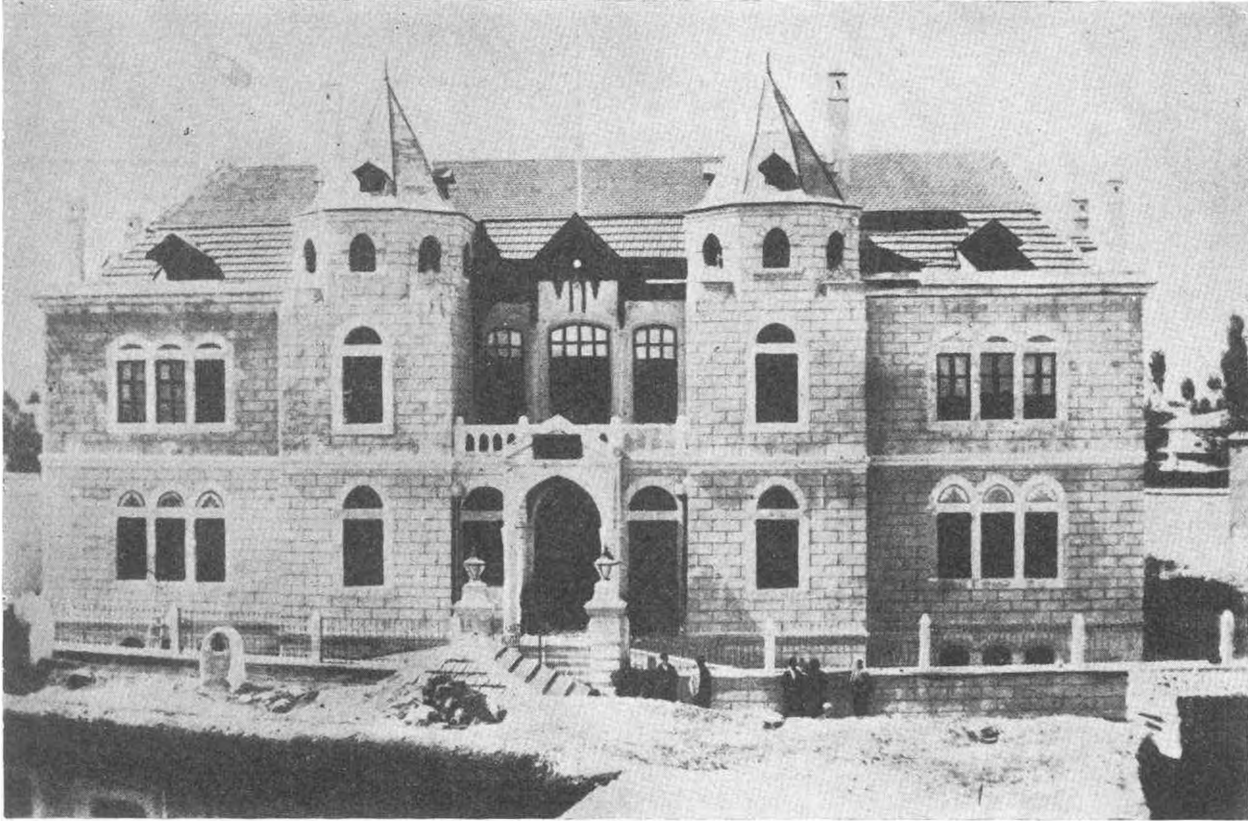
Let. XVI. III

Önder, Mehmet

Res. 2 — 1915 Yılında Konyada dokunarak Marşal Hindenburg'a hediye edilen hali (Mehmet Önder Koleksiyonundan)

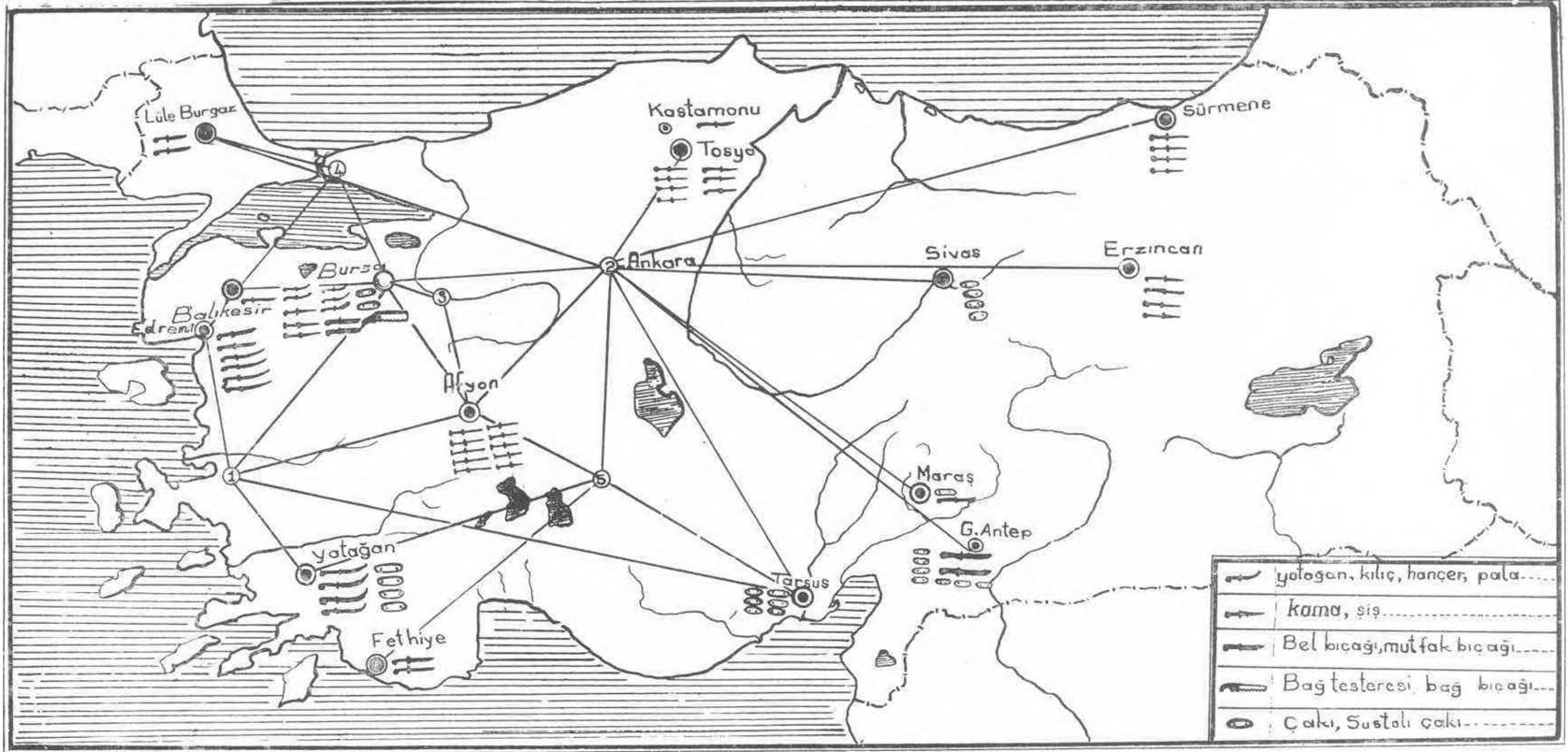


Res. 3 — Konya Valisi Ferit Paşanın açtığı halı sergisinde yapılan törenden bir görüntü  
(Konya Müzesi Arşivi)

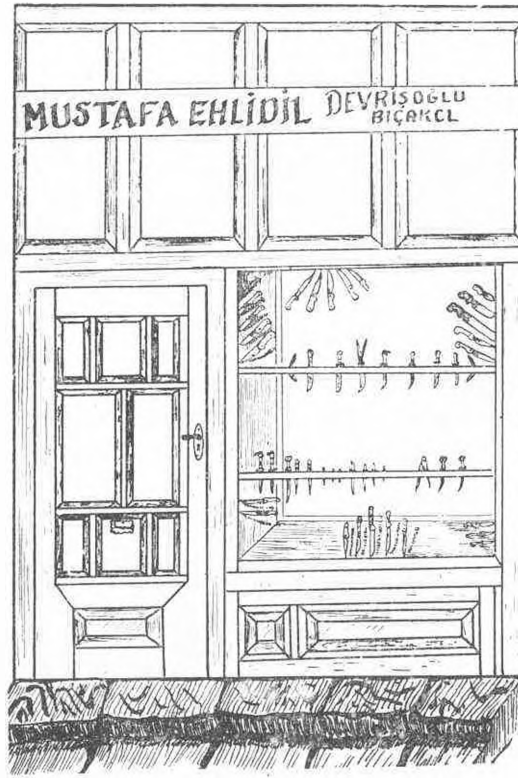


Res. 4 — Halı sergisinin açıldığı Mekteb-i Sanayi  
(Konya Müzesi Arşivi)

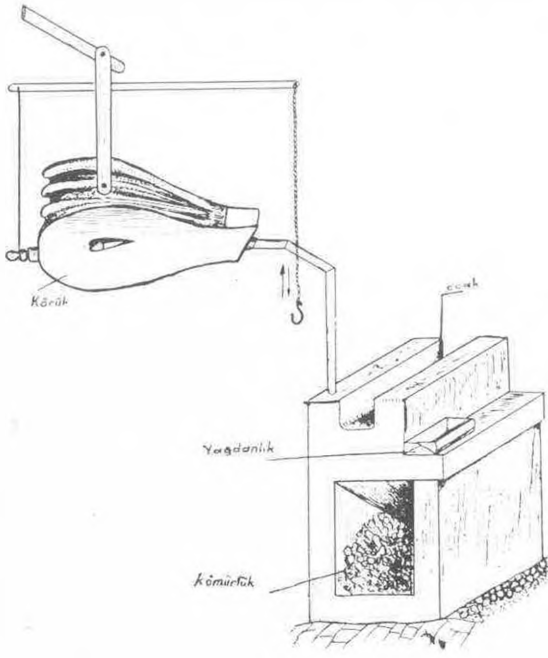




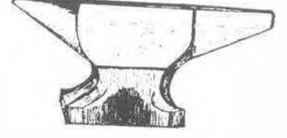
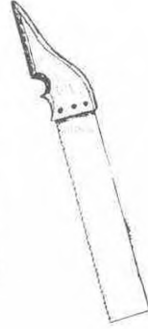
6136 Nolu kanunun 4.üncü maddesi, bıçakçılık sanayisine tatbik edilmesinden önceki durum.



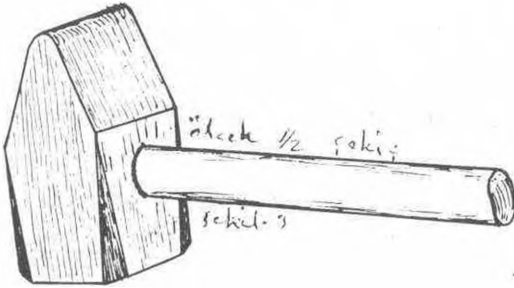
Bıçakçı dükkânı



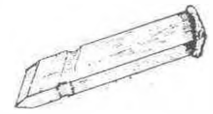
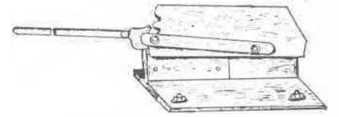
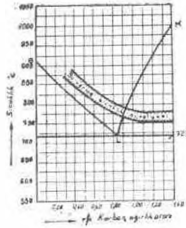
Şek.: 1



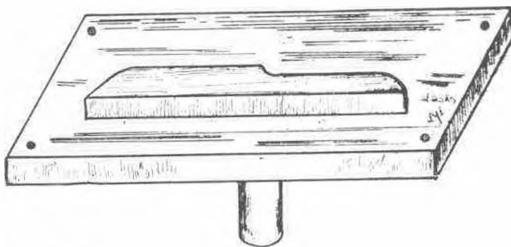
Şek. 2, 9, 11, 12.



Şek.: 3.



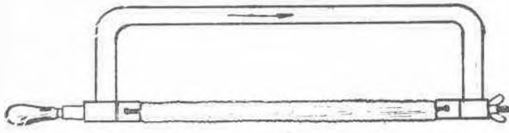
Şek: 4, 5, 16



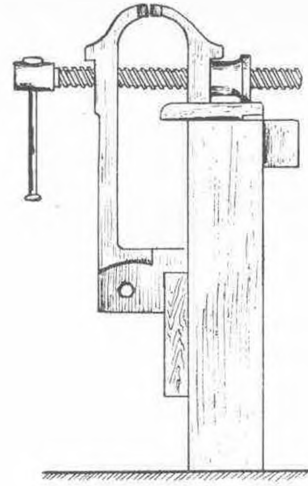
Şek: 6.

- Şek. 1. Ocak
- Şek. 2. Örs
- Şek. 9. Ağaç testeresi
- Şek. 11. Eğe
- Şek. 12. Kısaç
- Şek. 3. Çekiş
- Şek. 4. Keski kalemi
- Şek. 5. Makas
- Şek. 16. Sade karbonlu çeliklerin su verme diyagramı.
- Şek. 6. Erkek kalıp

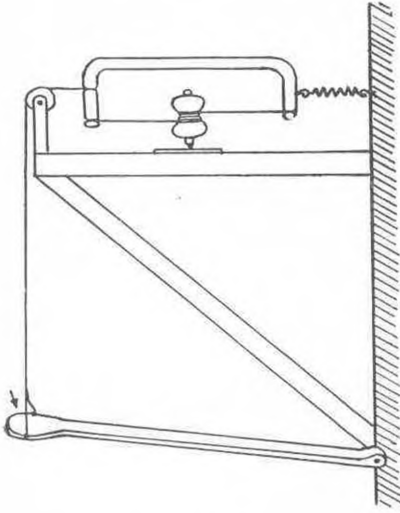




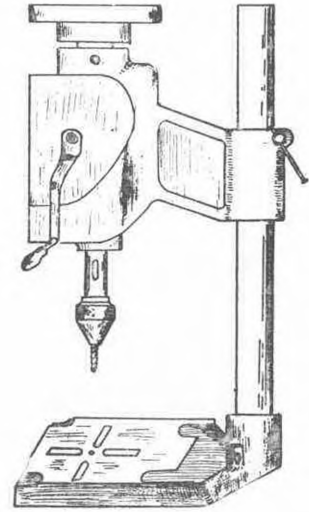
Şek: 8.



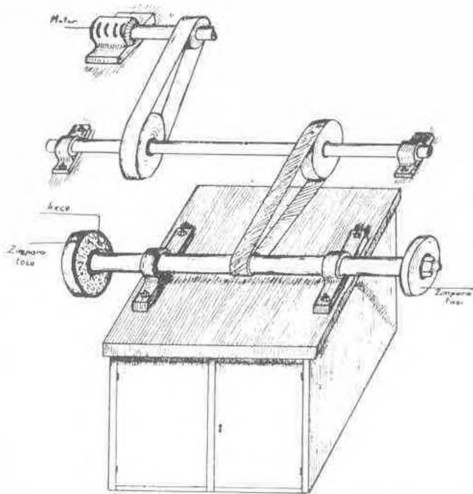
Şek: 10.



Şek: 13

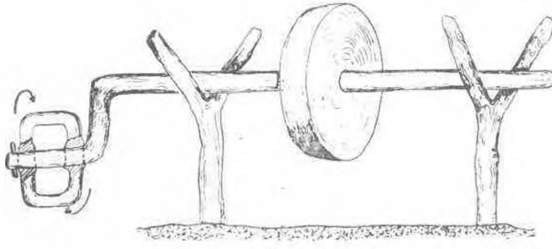


Şekil: 14

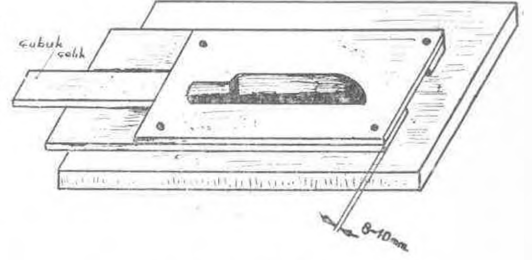


Şek: 15.

- Şek. 8. Kol demir testeresi
- Şek. 13. Bıçak sapı delme tezgâhi
- Şek. 15. Keçe
- Şek. 10. Mengene
- Şek. 14. El matkabı



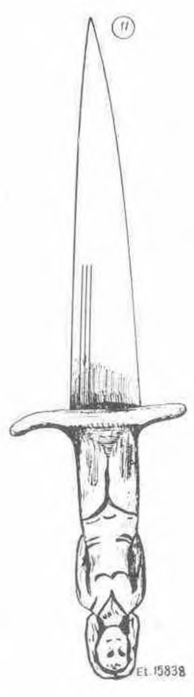
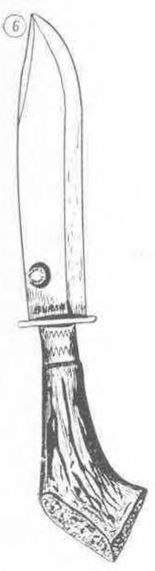
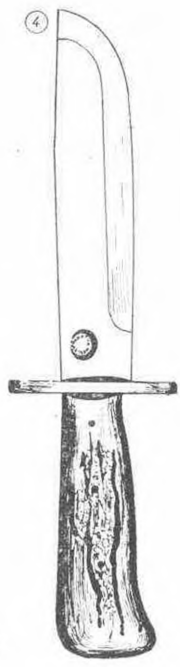
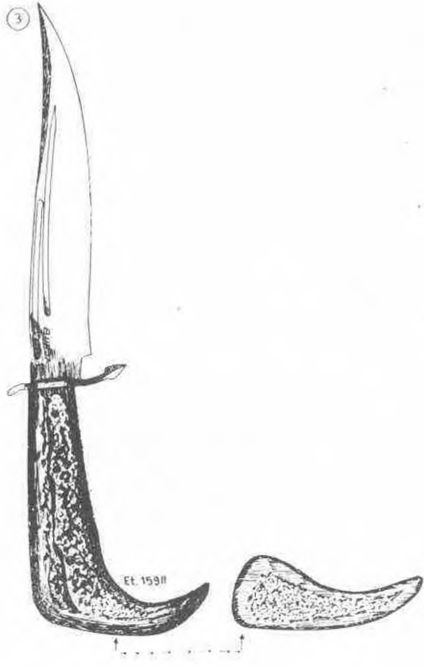
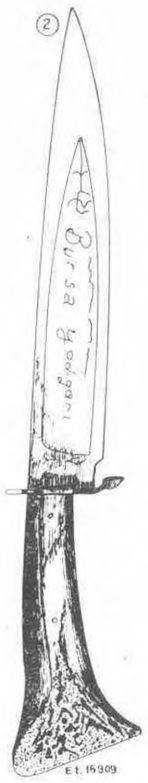
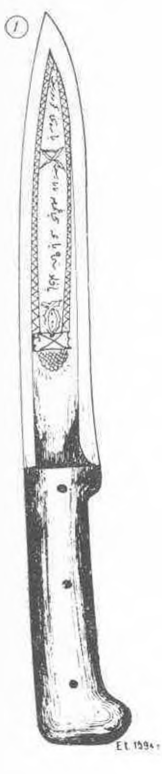
Şek. 17.

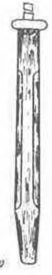
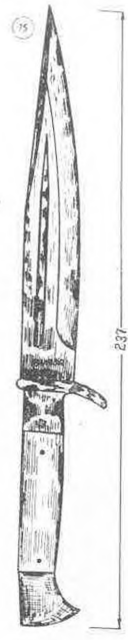
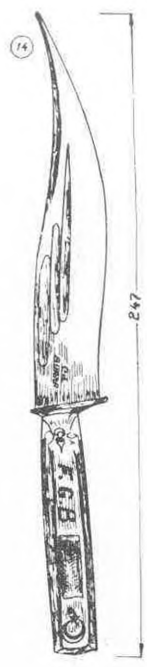


Şek. 18 — Dişi kalıp.

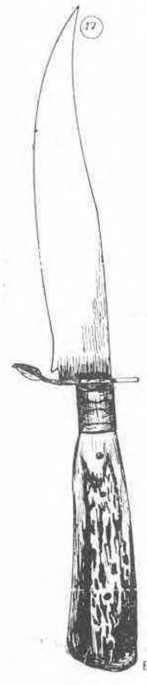
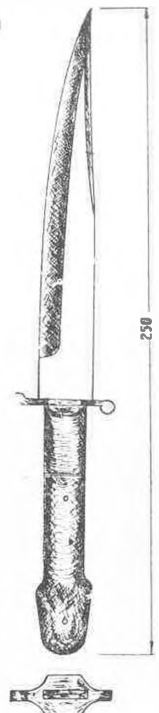
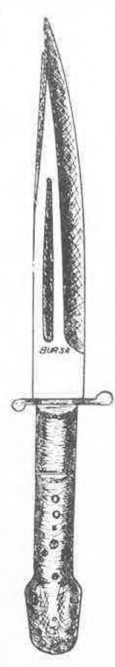


Şek. 7. Dişi kalıp

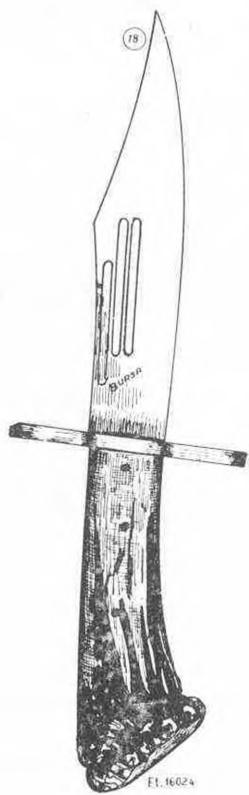




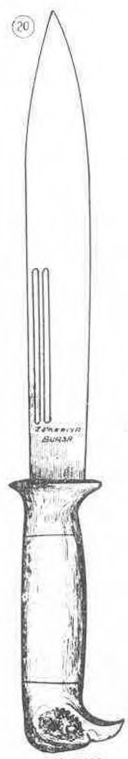
Et. 15850



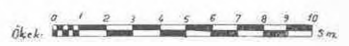
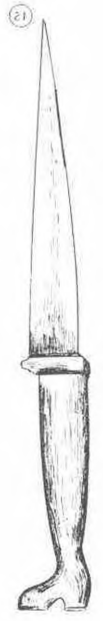
Et. 15864

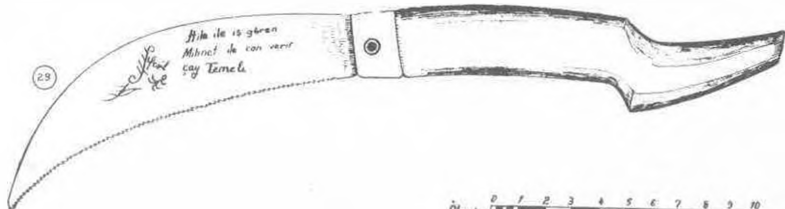
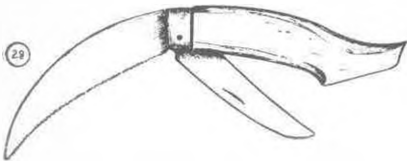
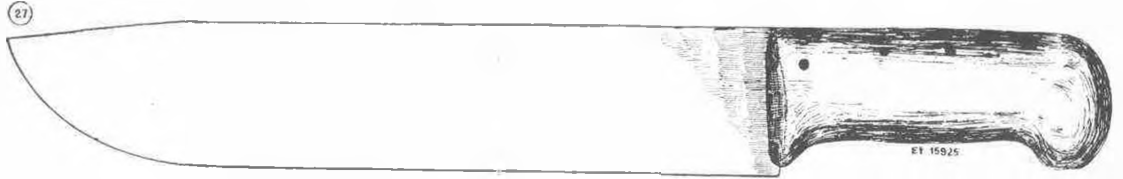
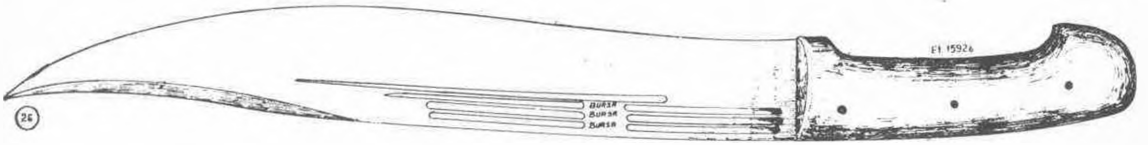
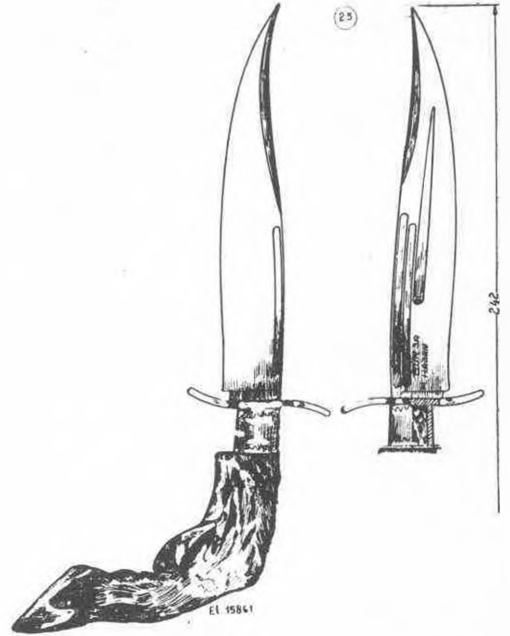
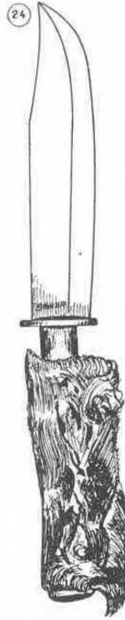
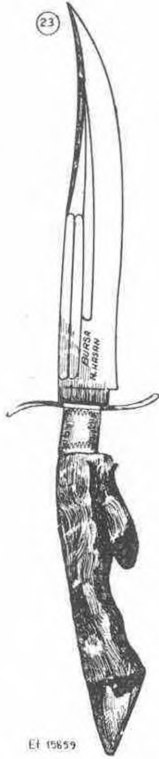
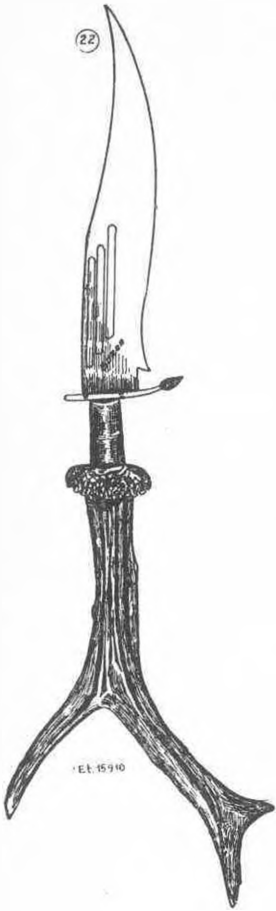


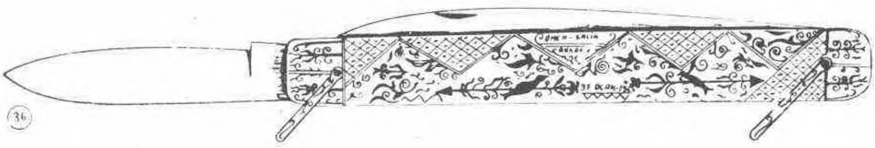
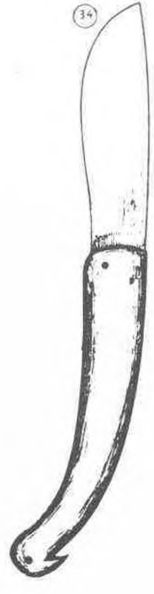
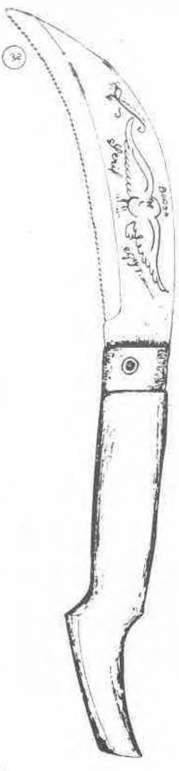
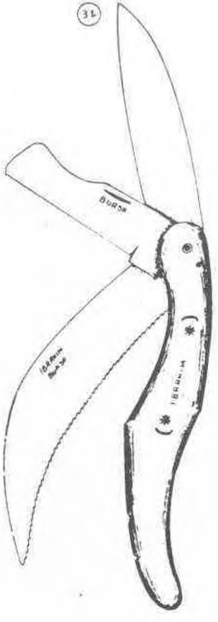
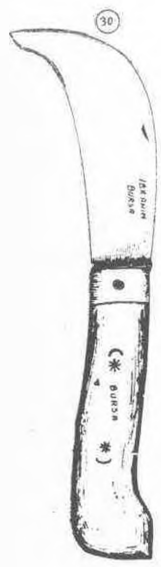
Et. 16024

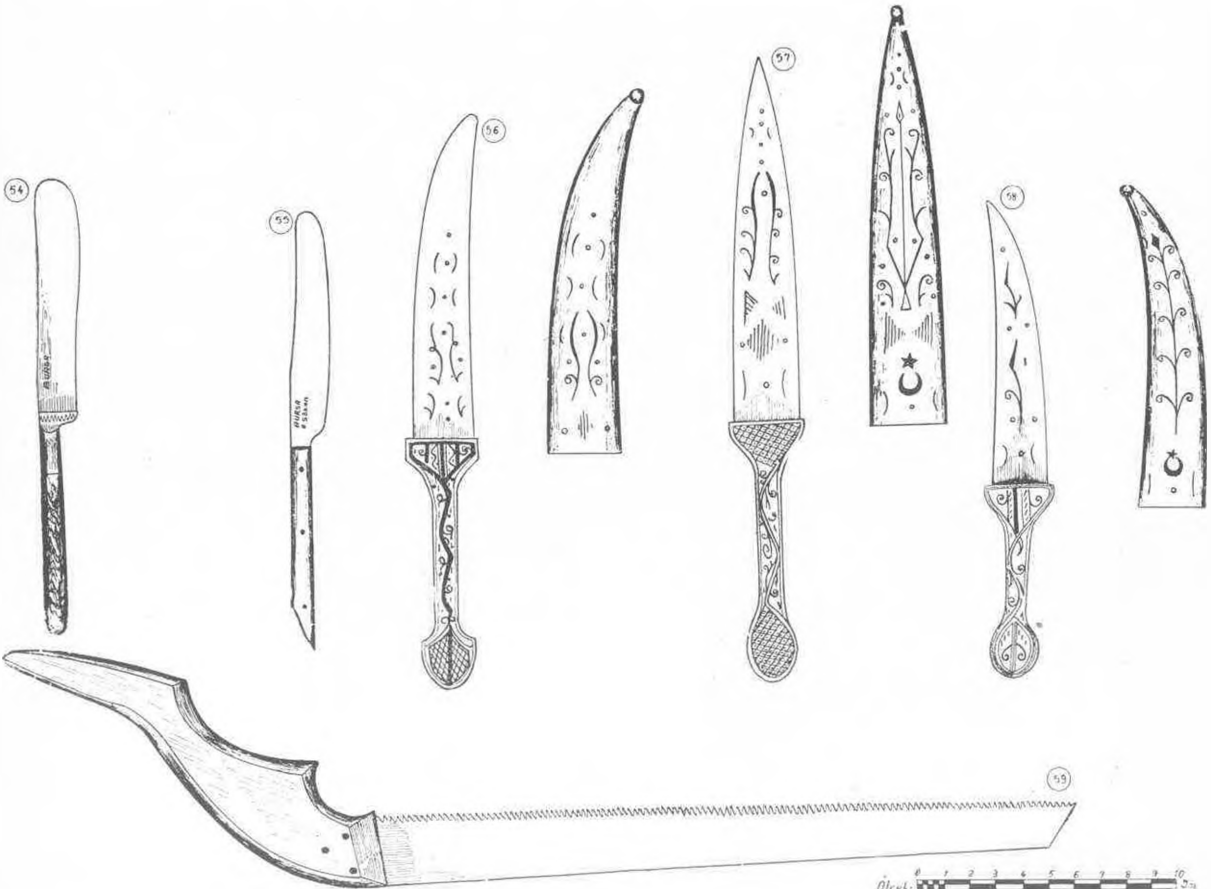


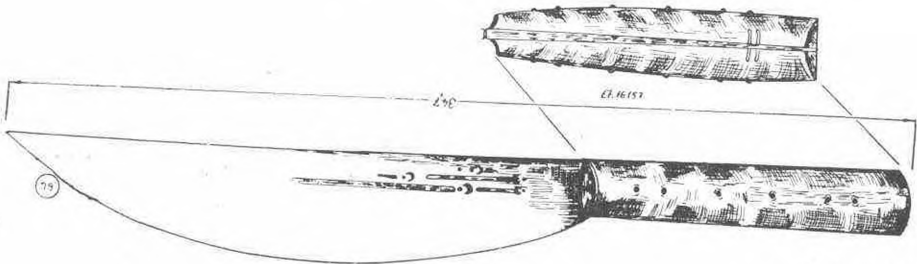
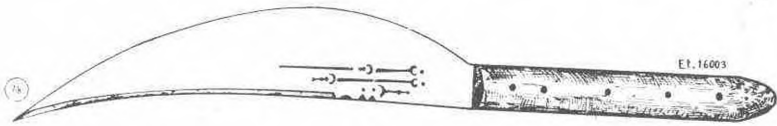
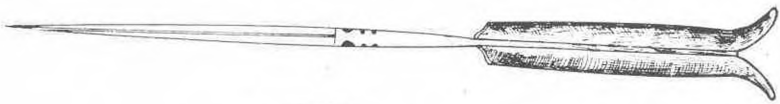
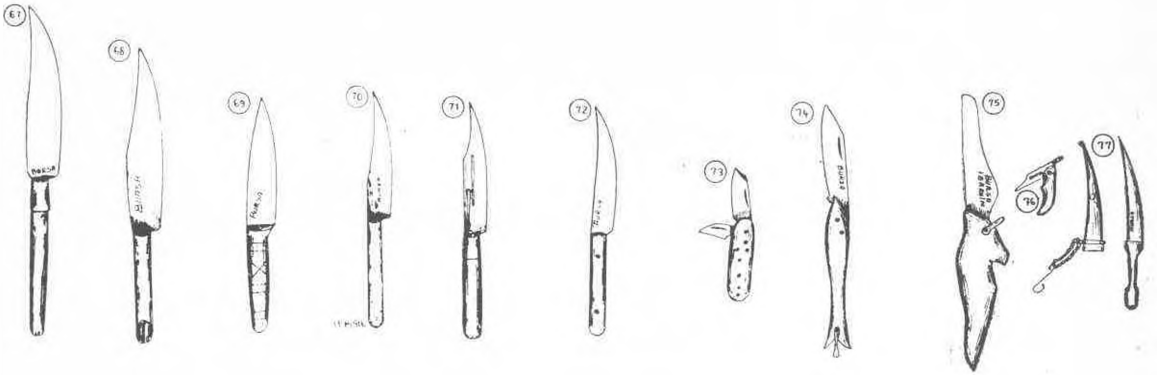
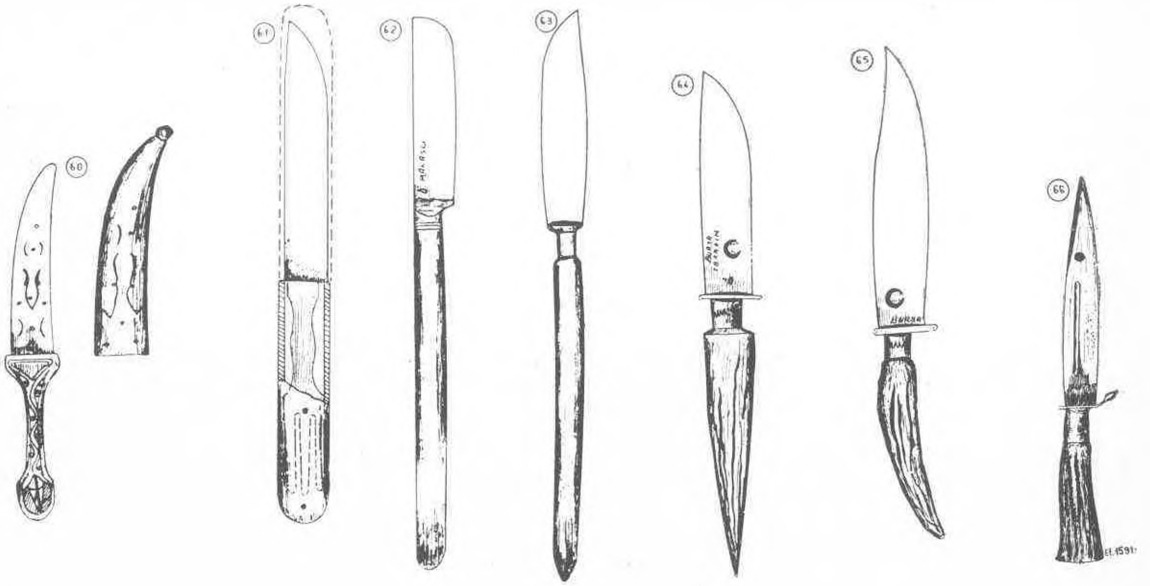
Et. 15836



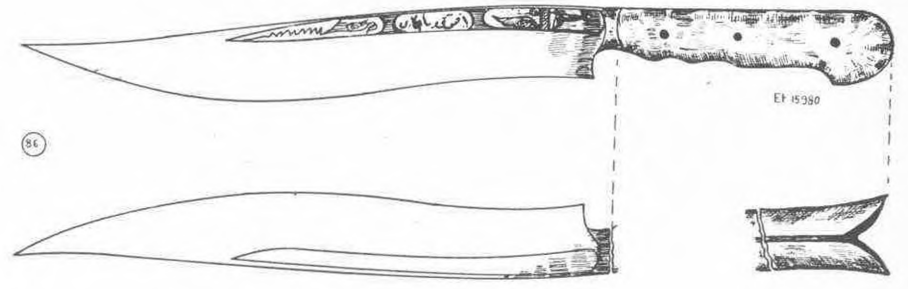
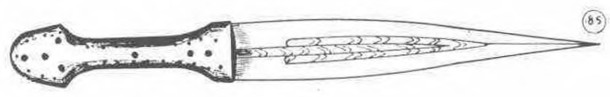
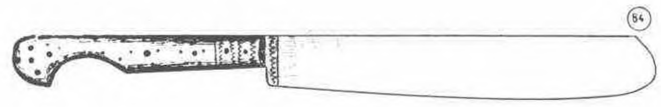
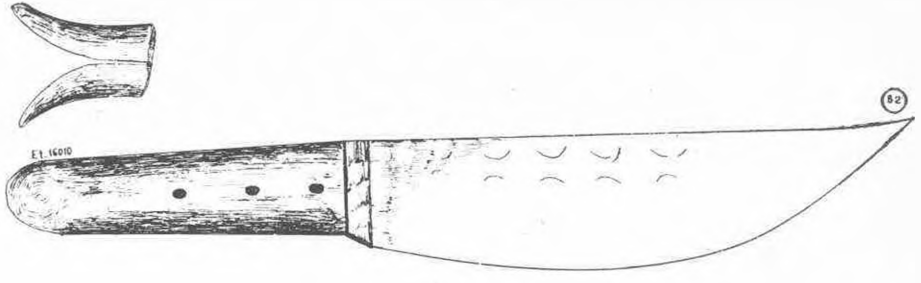
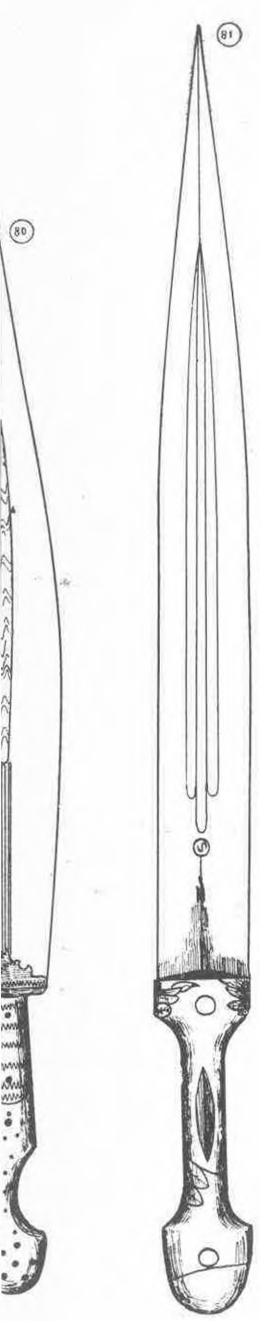


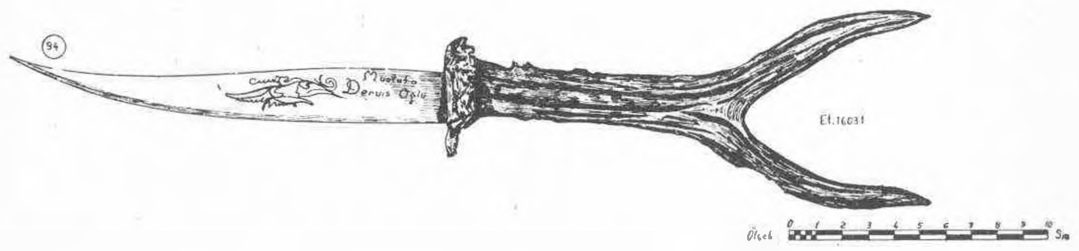
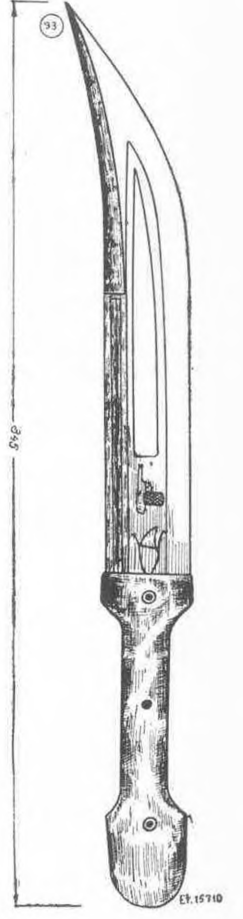
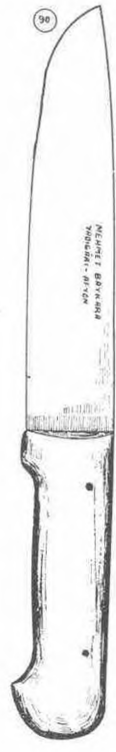
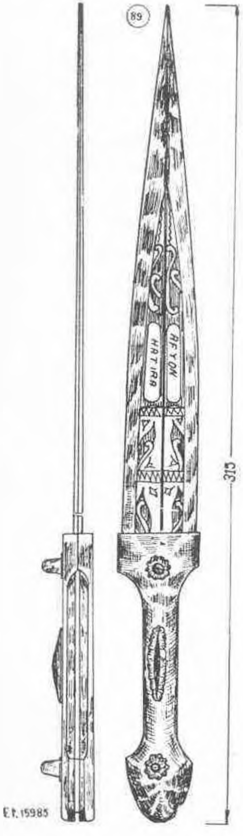
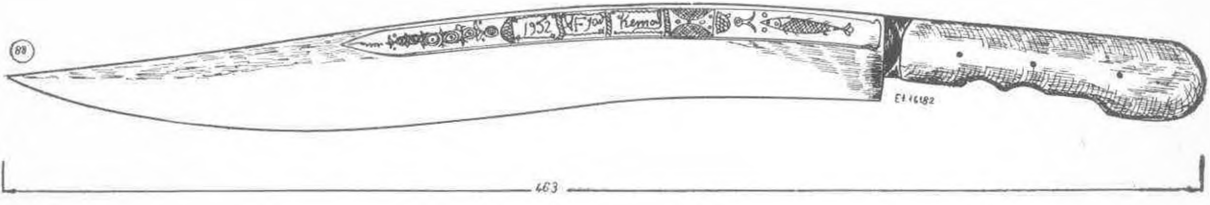


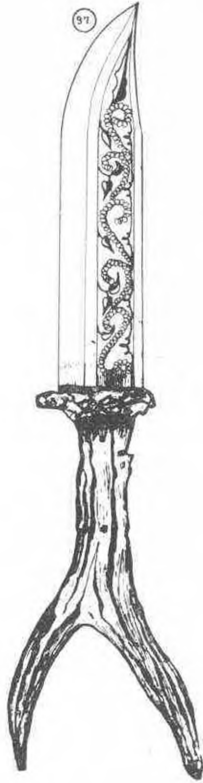


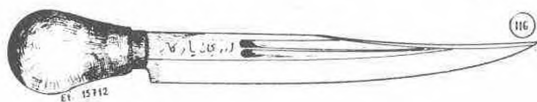
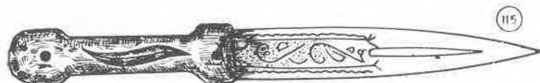
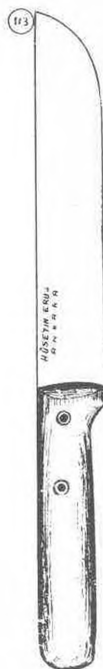
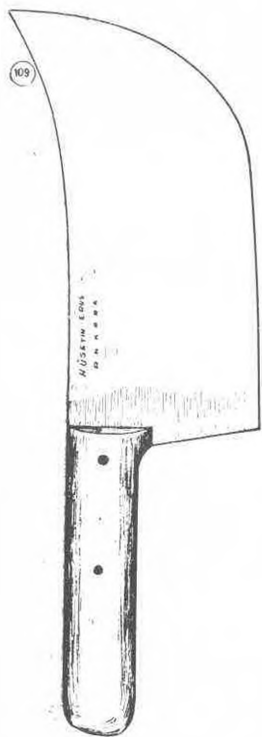
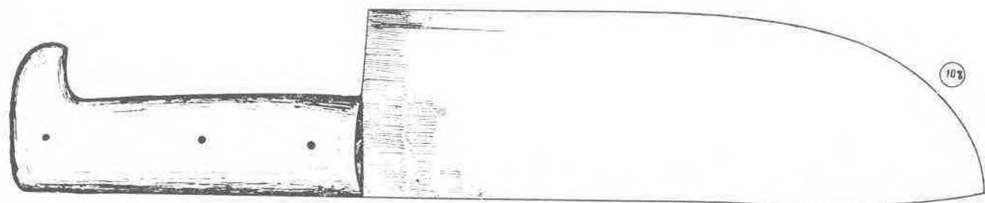
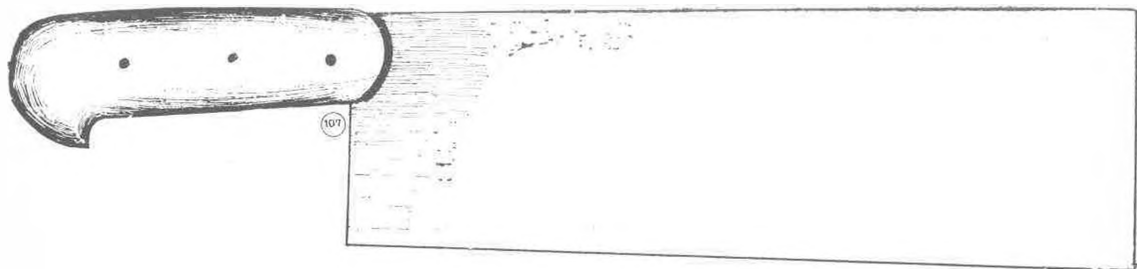


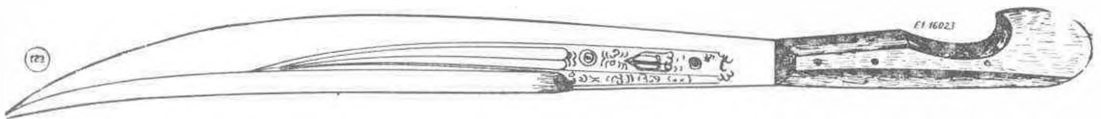
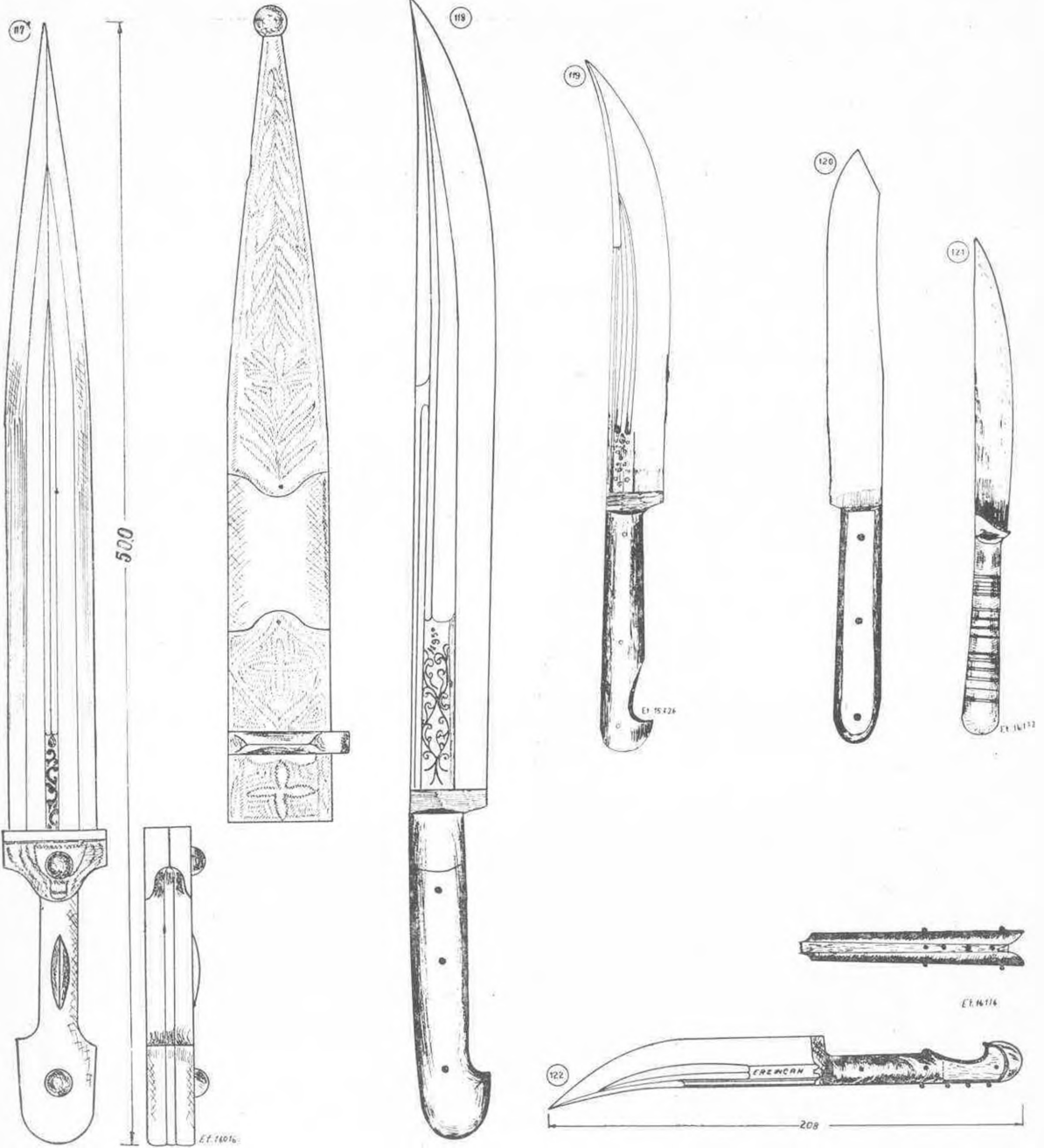


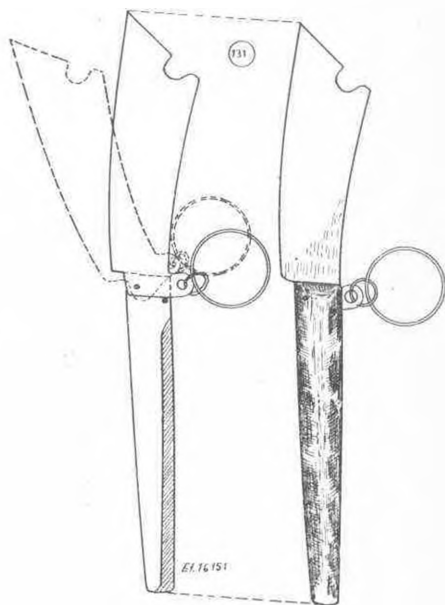
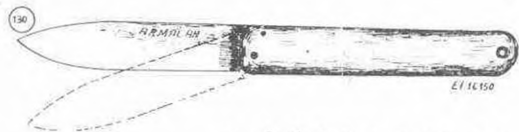
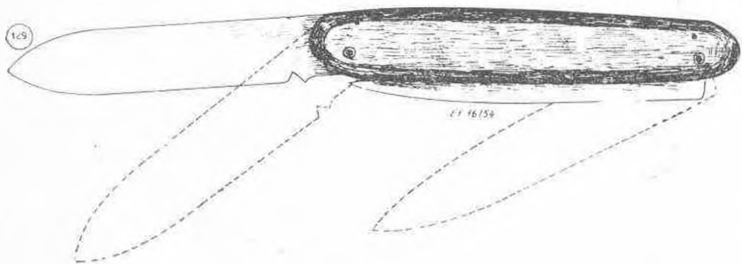
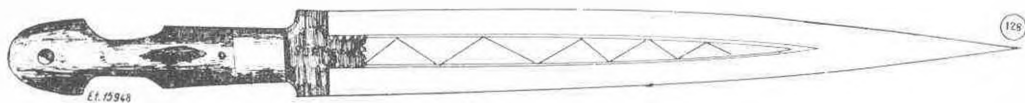
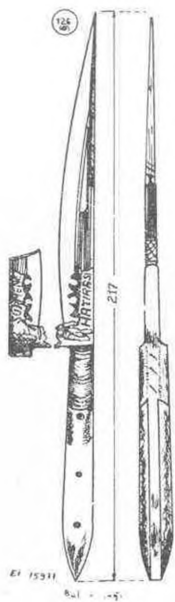
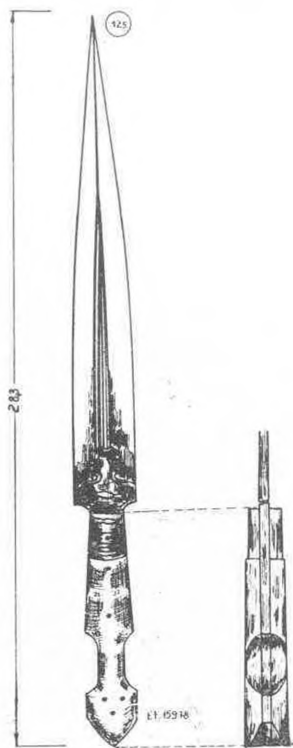


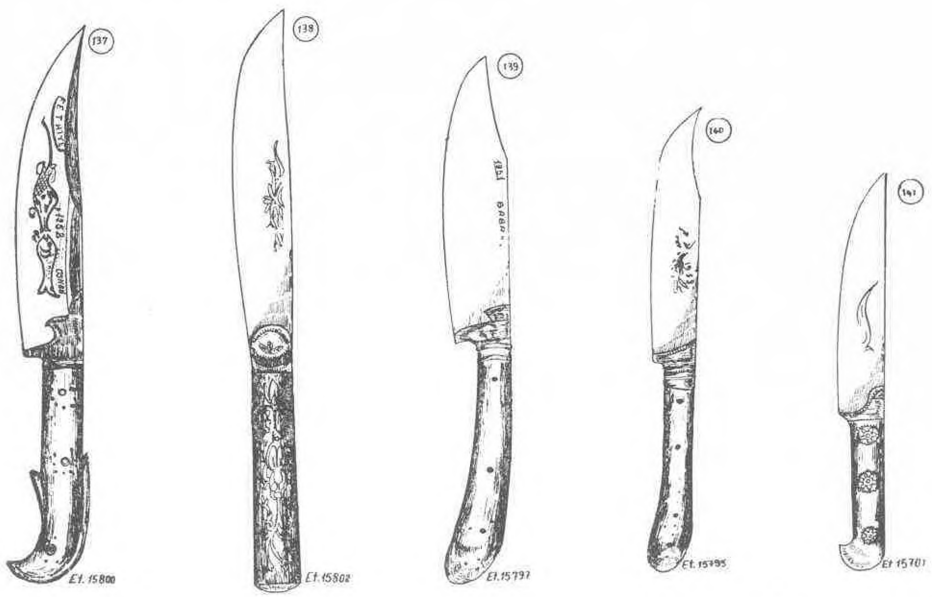
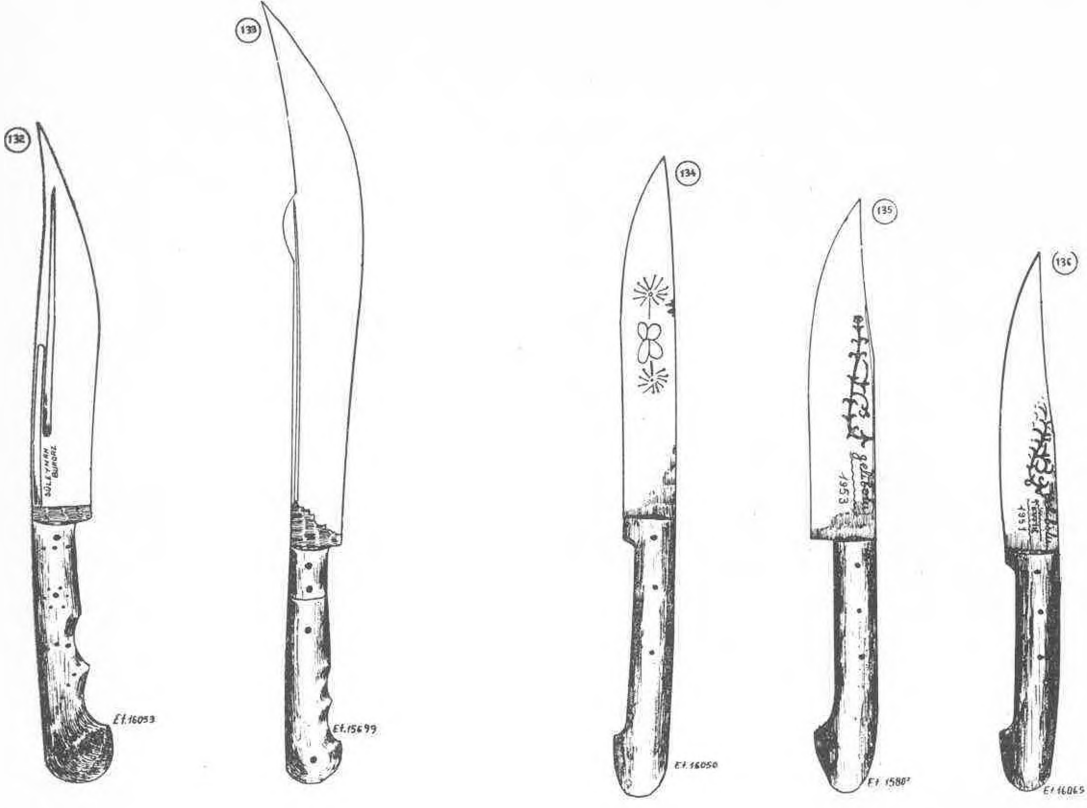


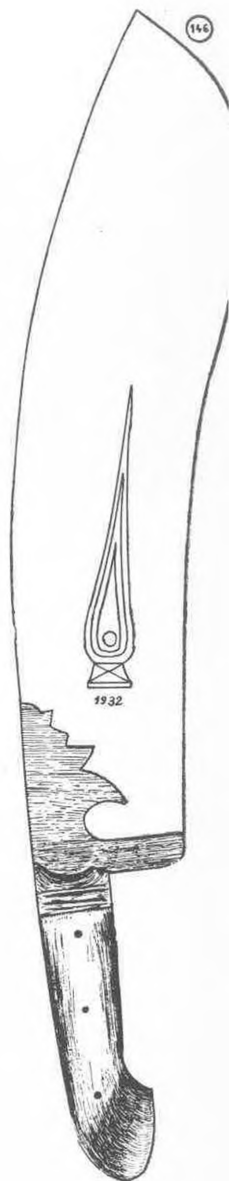
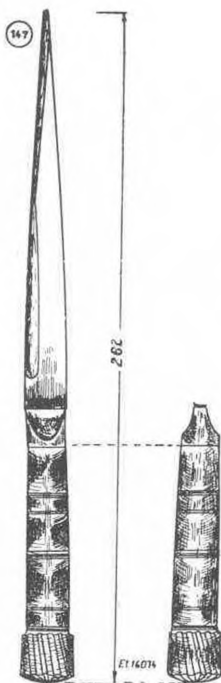




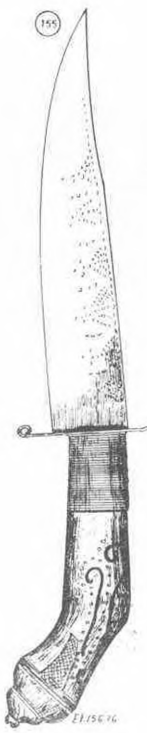
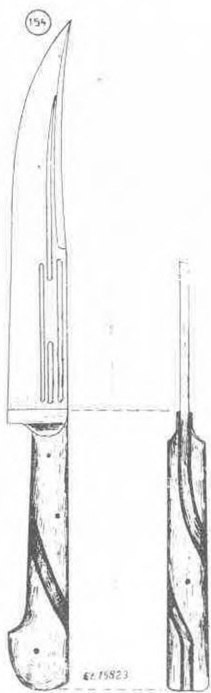
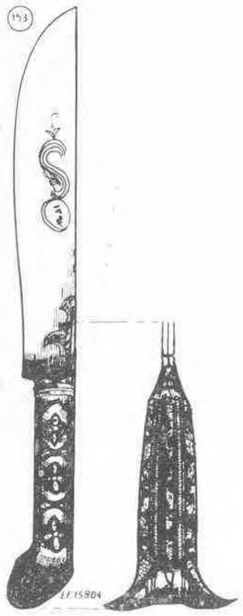
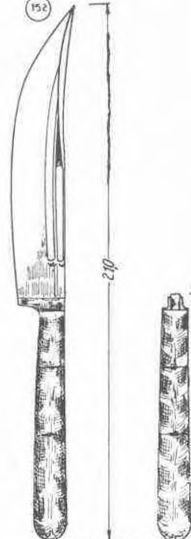
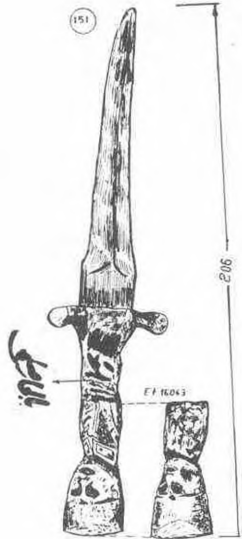
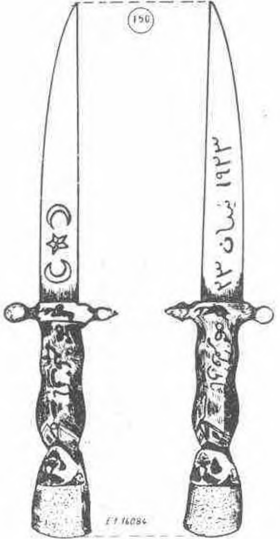


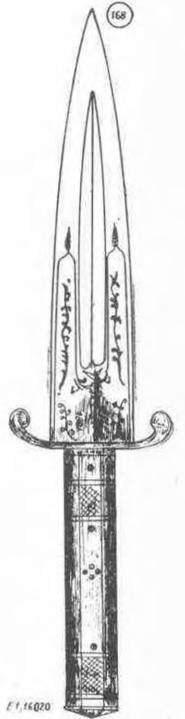
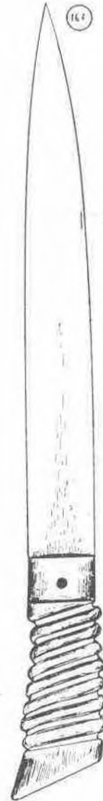
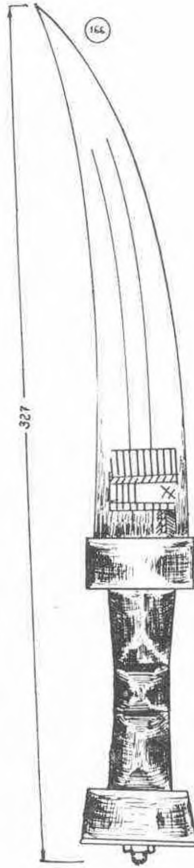
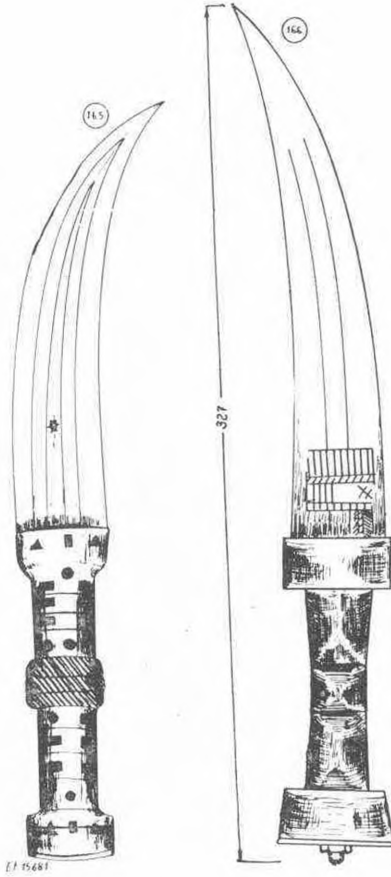
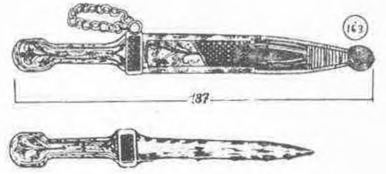
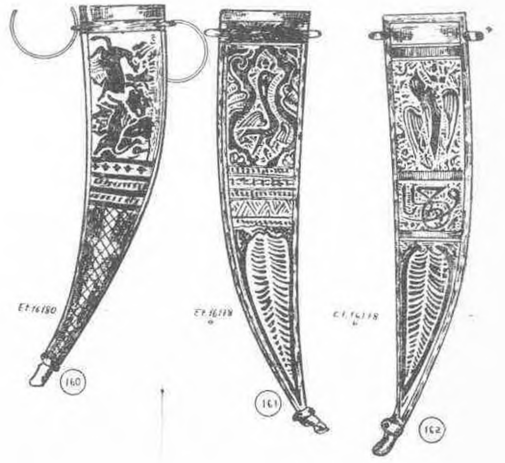
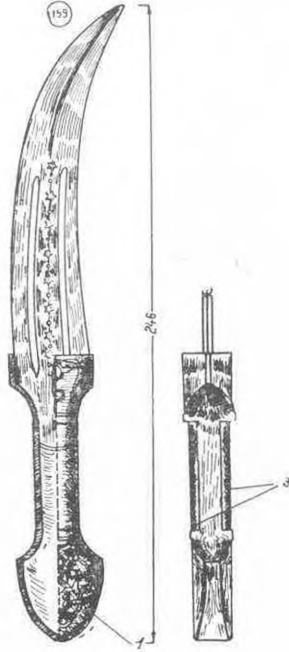
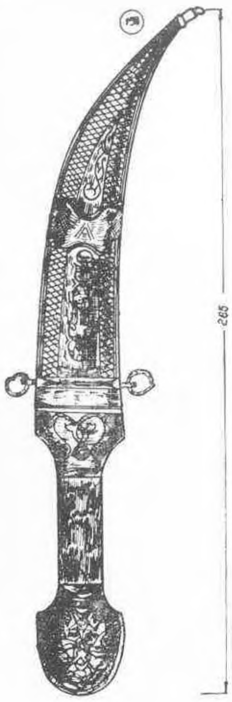


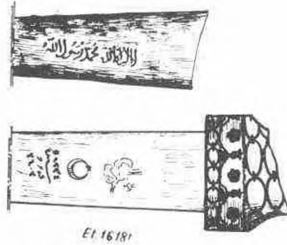




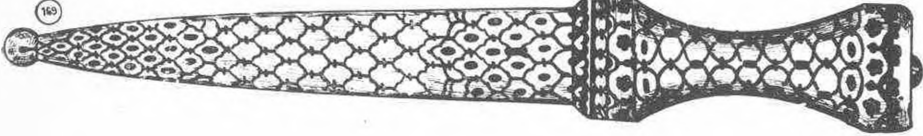




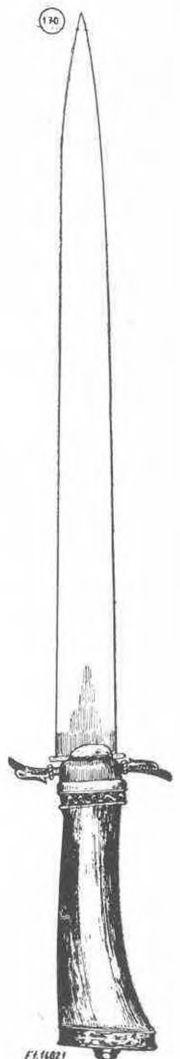




E1.16181

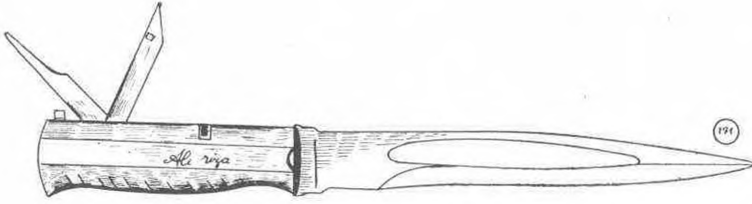


160



170

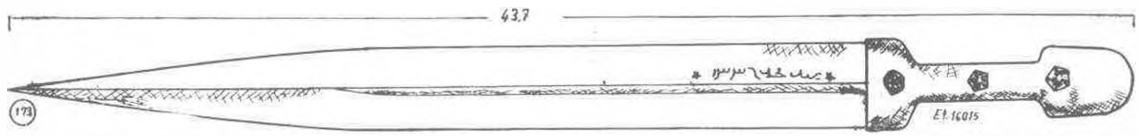
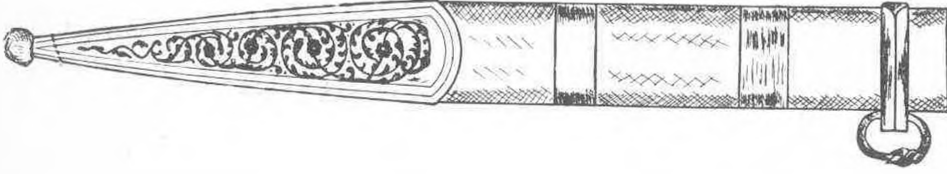
E1.16021



191



192



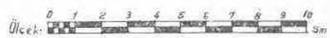
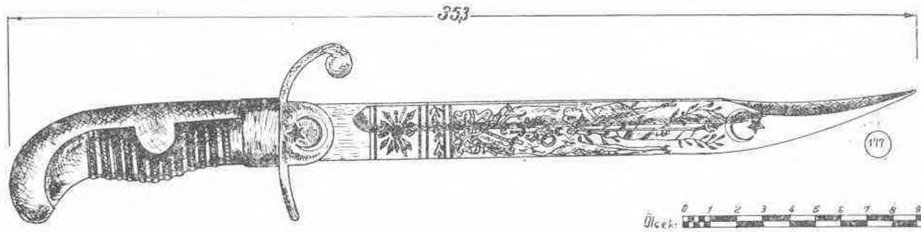
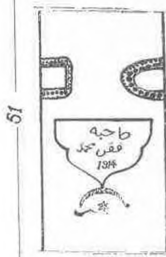
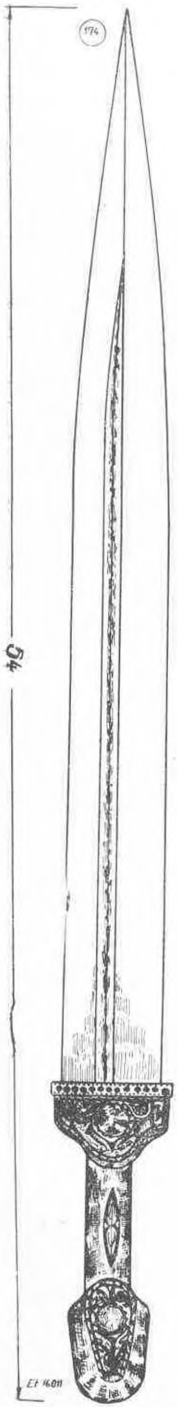
437

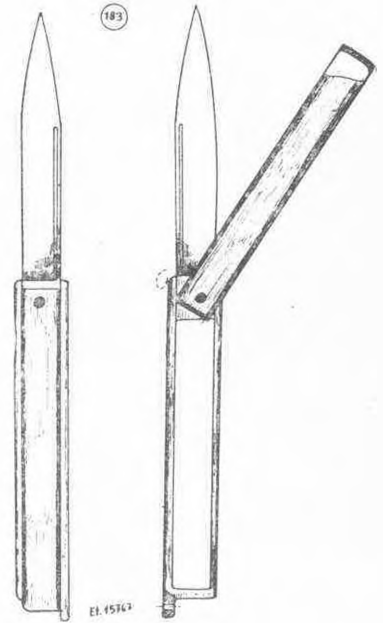
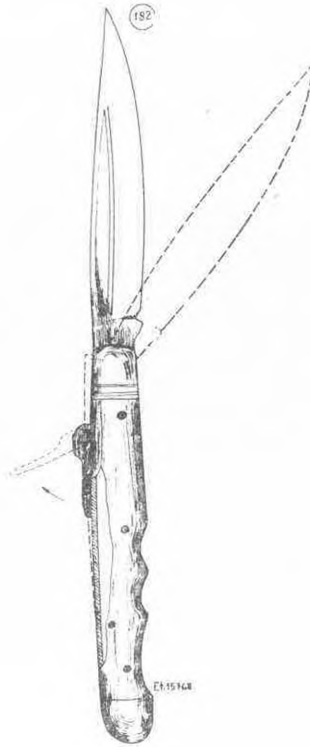
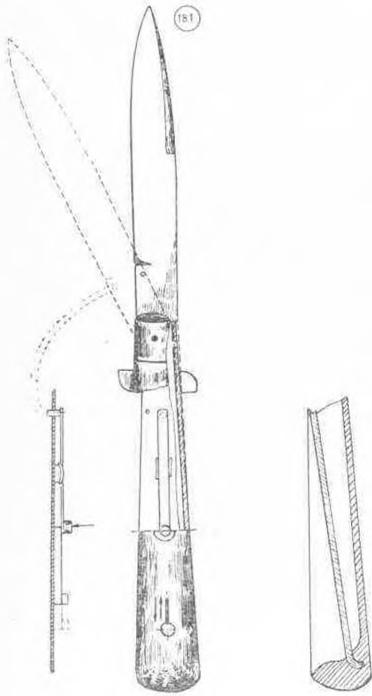
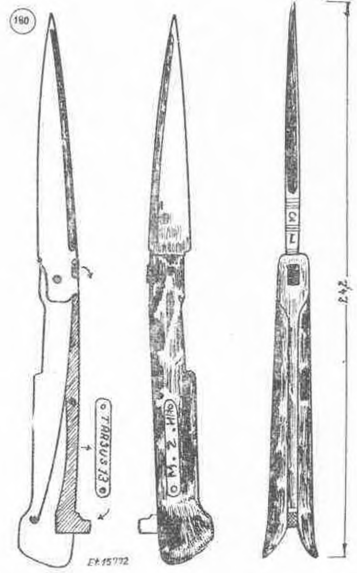
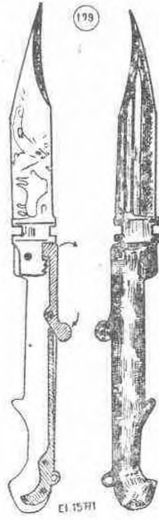
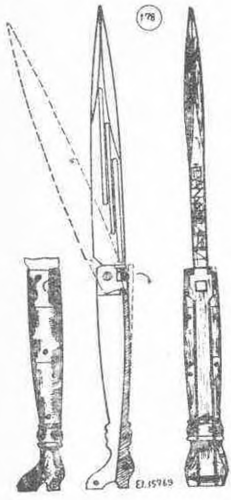
173

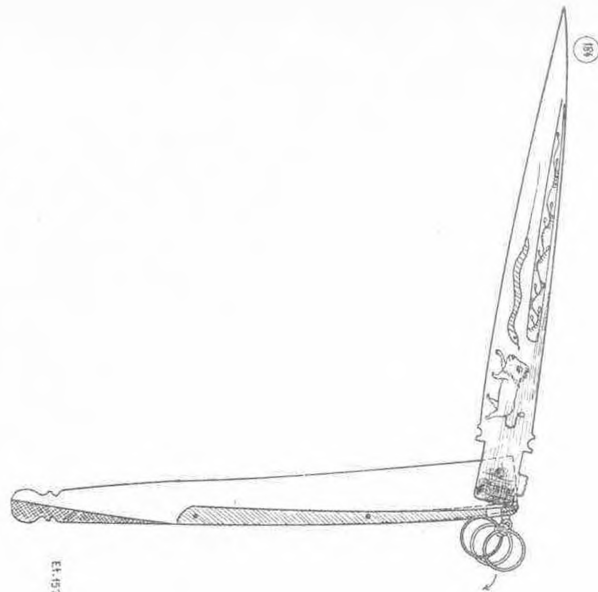
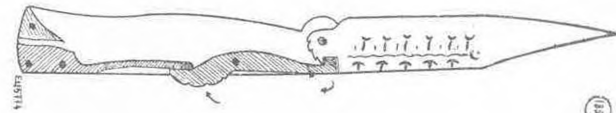
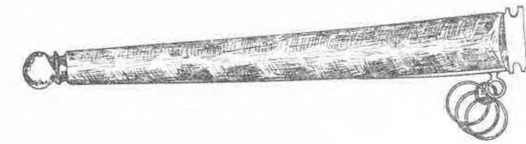
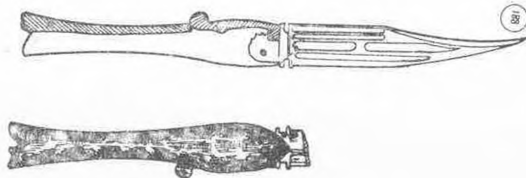
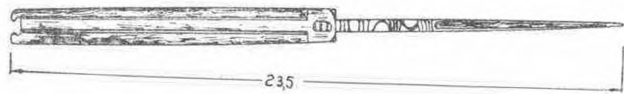
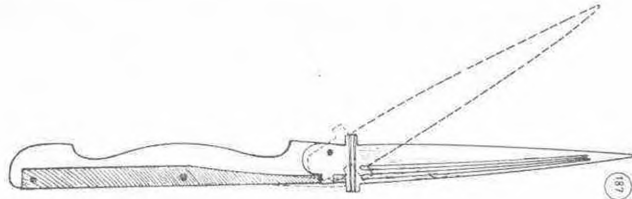
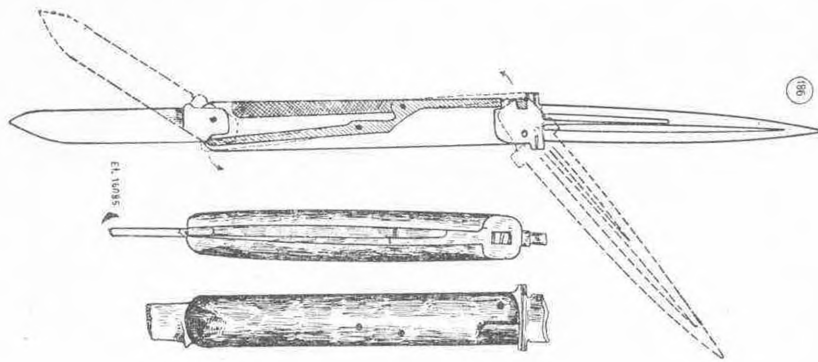
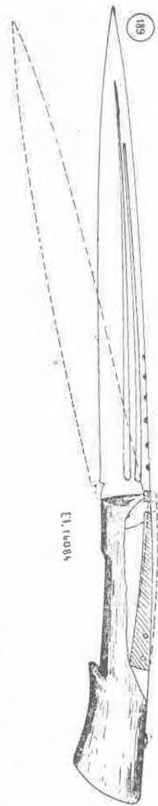
E1.16015



0cm







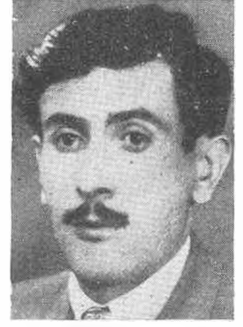
BIÇAKCI USTALARI



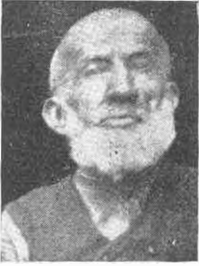
Ali Menekşe  
(Balıkesir)



Mustafa Dervişoğlu  
(Balıkesir)



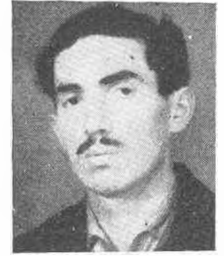
İsmail Yankı  
(Kastamonu)



Ali Bayrak  
(Tosya)



Hacı Hafız  
Hasan Çevik  
(Tosya)



Şefik Oruç  
(Tosya)



Zekeriya Dinçgün  
(Bursa)

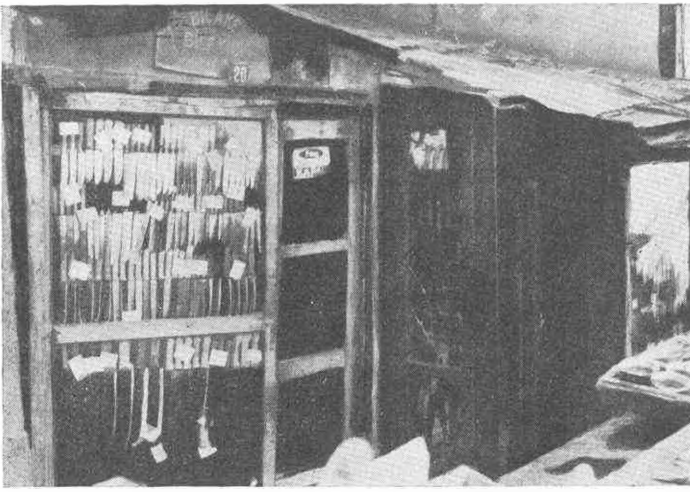


İbrahim Benden  
(Bursa)



Mahmut Bıçakçı  
(Malatya)





Bir Bıçakçı ve bileyici dükkanı  
(Ankara)



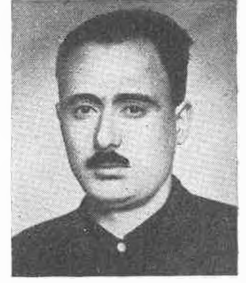
Ö. Lütfi Üzgöl  
(Ankara)



İsmail Kılıç  
(Ankara)



Kâmil Akbulak  
(Afyon)



Kemal Sarıgül  
(Afyon)



Bıçakçı Ahmet Şevki, oğlu Mustafa Ehlidil ile beraber çalışırken  
(Bahkesir)





Zeki Oral

