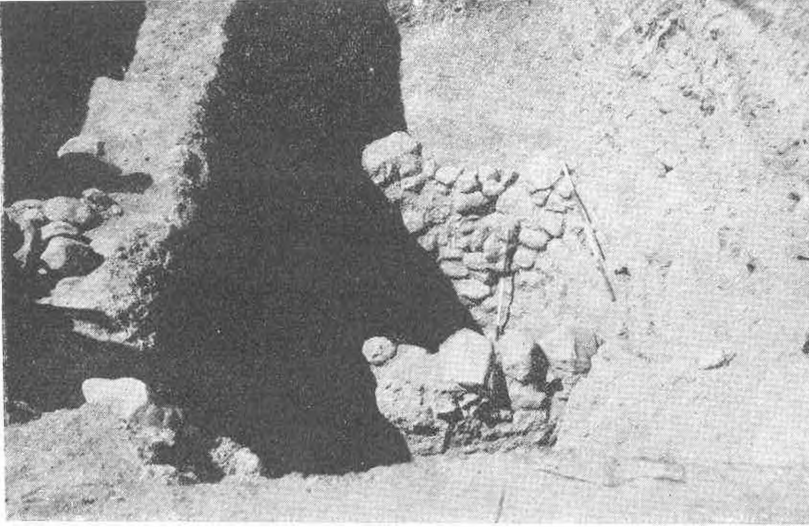




Res. 1 — Yesemek sondajı : Demirçağına ait duvar kalıntısı.



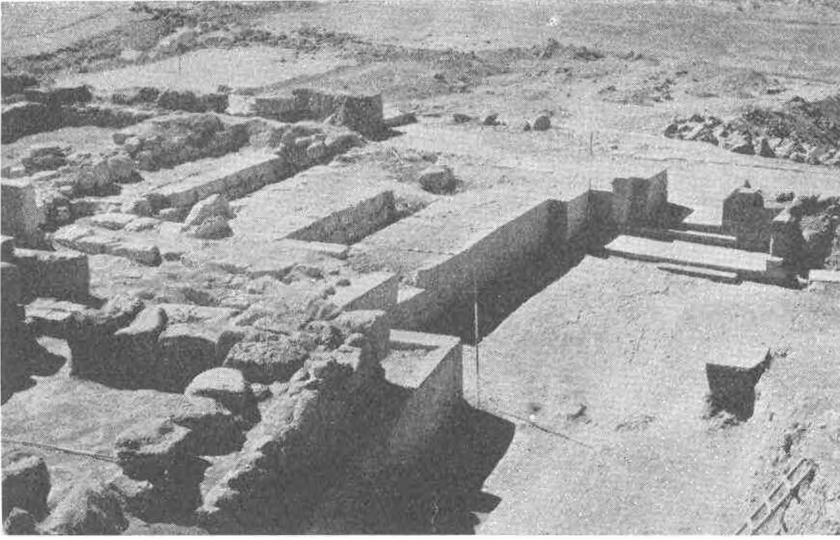
Res. 2 — Yesemek sondajı : Etrafı taşla örülmüş silo.



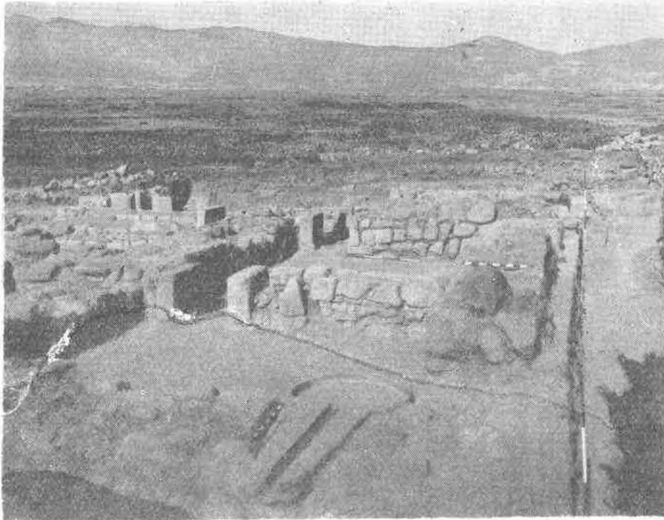
Res. 3 — Tilmən Hüyük : II. Kat Sarayının doğu kesiminin Toprak üstü vaziyetinin kazıya başlanmadan önceki görünüşü. (1961)



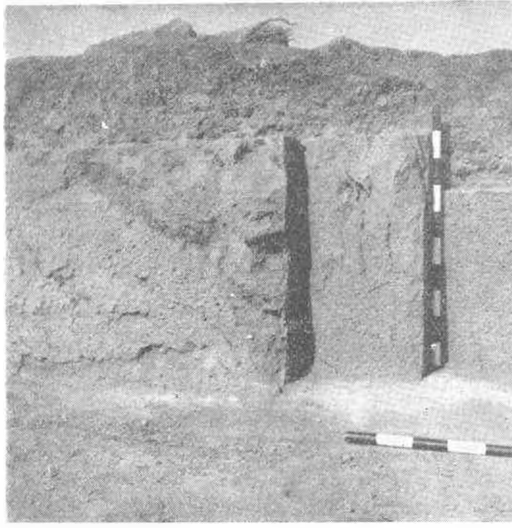
Res. 4 — Tilmen Hüyük : II. Kat sarayının doğu kesiminin kazıdan sonraki görünüşü. (1961)



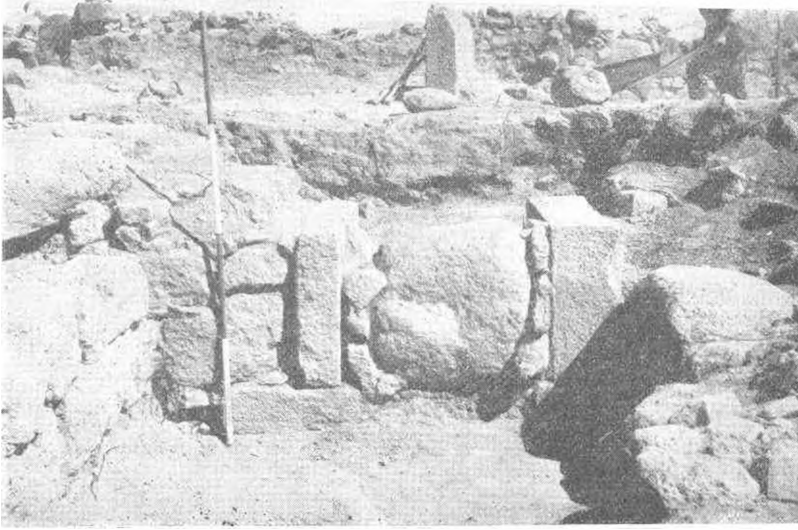
Res. 5 — Tilmen Hüyük. II. Kat sarayının Güney ve Güney-Doğu kesiminin kazıdan sonraki görünüşü. (1961)



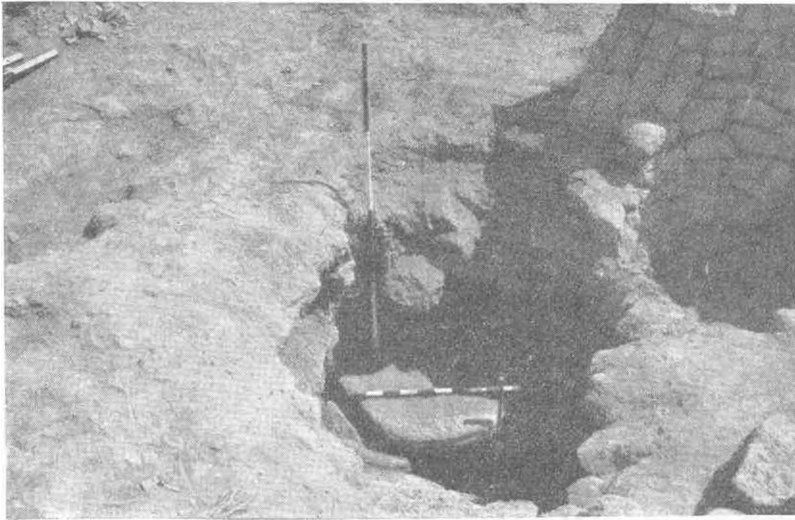
Res. 6 — Tilmen Hüyük : II Kat sarayının Kuzey-Doğu Kesimi. (1961) Ön planda banyo odası.



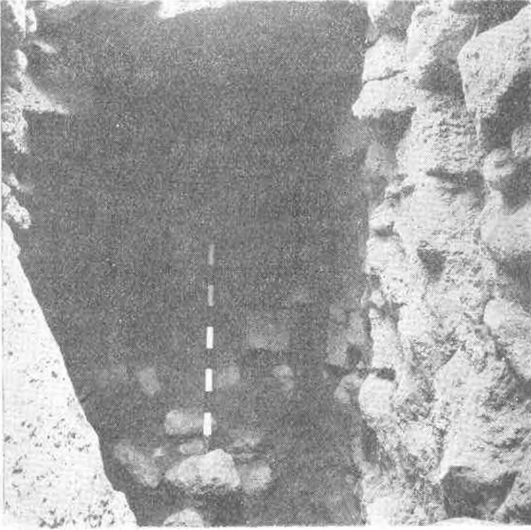
Res. 7 — Tilmen Hüyük : II. kat sarayındaki büyük ortostatlı salondan bir görünüş. (1961)



Res. 8 — Tilmen Hüyük : II. Kat sarayının ikinci safhada kapatılan ortostatlı kapılarından biri. (1961)



Res. 9 — Tilmen Hüyük : III. kat mezarı (= M3) Sağ tarafta Roma çağına ait bir silo görülmektedir. (1961)



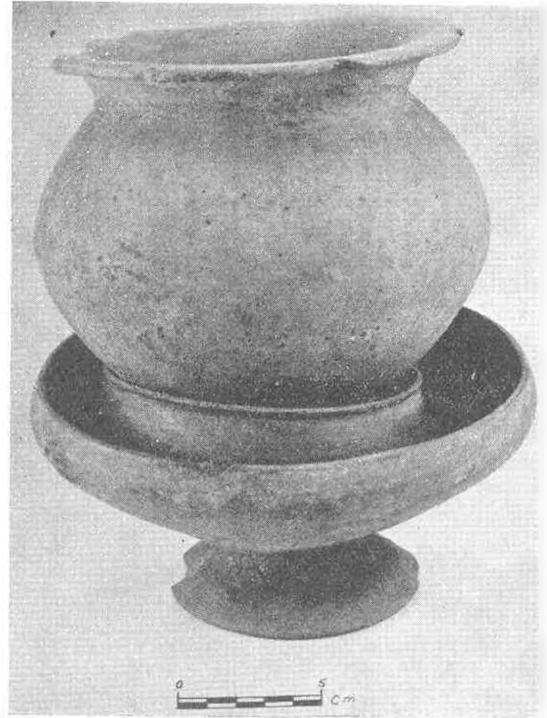
Res. 10 — Tilmen Hüyük : III. kat sist-mezarının iç görünüşü. (1961)



Res. 11 — Tilmen Hüyük : III. kat sist-mezarının üstünü örten bazalt Levhalardan biri (1961).



Res. 12 — Tilmen Hüyük : III. kat sist-mezarının Kuzey duvarından ve bazalt Levhaları ile örtülen üstünden bir kesim.



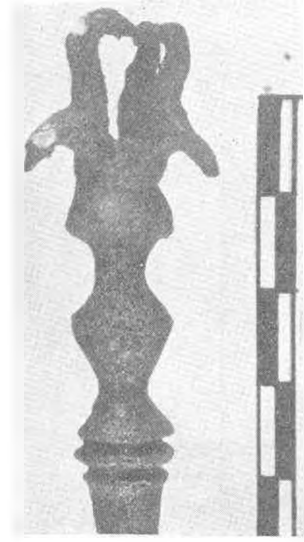
Res. 13 — Tilmen Hüyük : III. kat M3-mezarından çıkan iç içe üç kap.



Res. 14 — Tilmen Hüyük : III. kat
M3 mezarında bulunan ayaklı
“meyva tabağı”



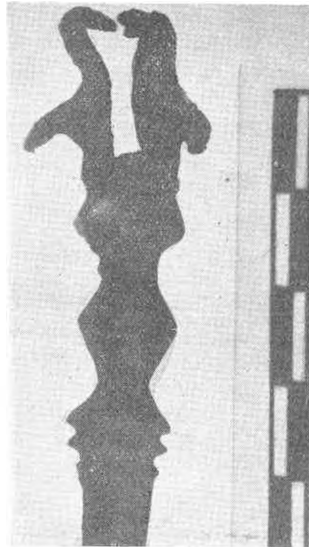
Res. 15 — Tilmen Hüyük : III. kat
M3 mezarı bulun-
tularından Kuş
aplikli bronz iğ-
ne. (1961) : Tb.
K/121



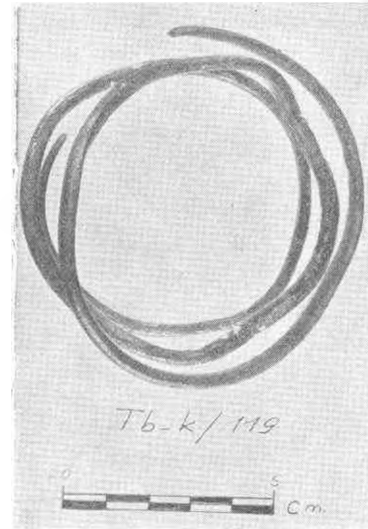
Res. 16 — Tilmen Hüyük :
Res. 15'deki bronz iğnenin
detay resmi.



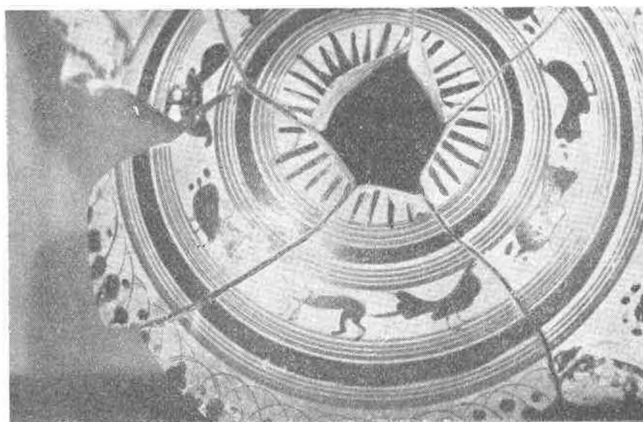
Res. 17 — Tilmen Hüyük :
III. kat M3 - mezarında
bulunan diğer bir bronz
iğne. (1961)



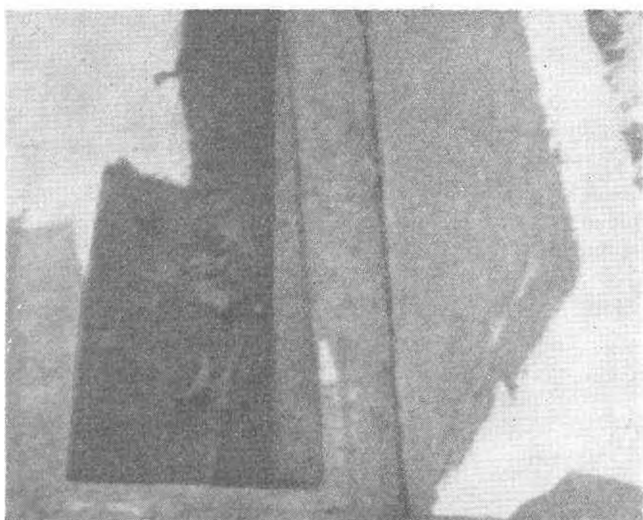
Res. 18 — Res. 17'deki
iğnenin bir detay resmi.
iğnenin topuz kısmında
ağız ağıza tünemiş kuşlar
daha yakından görülmek-
tedir. Tb - k/120



Res. 19 — Tilmen Hüyük : III.
kat M3 mezarında bulunan
dört halkalı kıvrımlı bronz
bilezik. (1961)



Res. 1 — Kyliks. Pişmiş toprak.



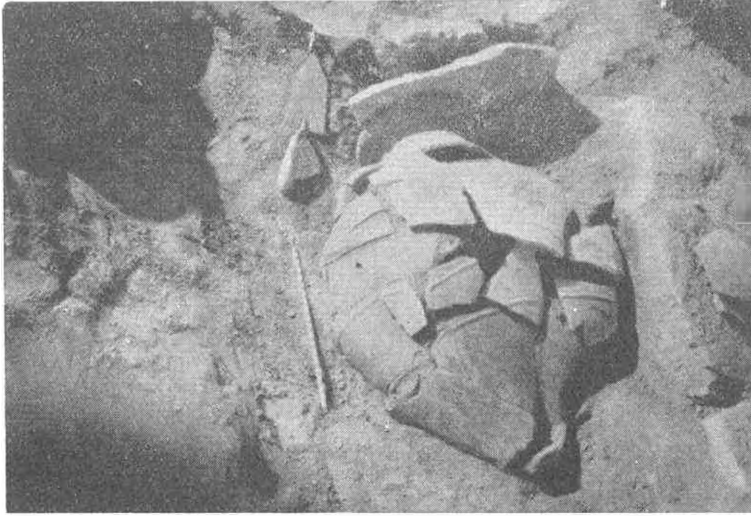
Res. 2 — Lâhit.



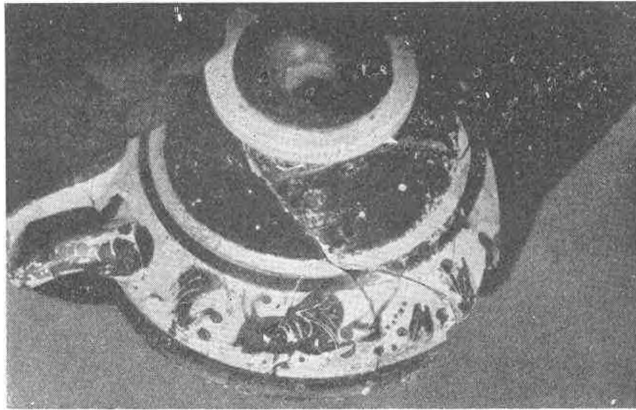
Res. 3 — Mezar kapağı.



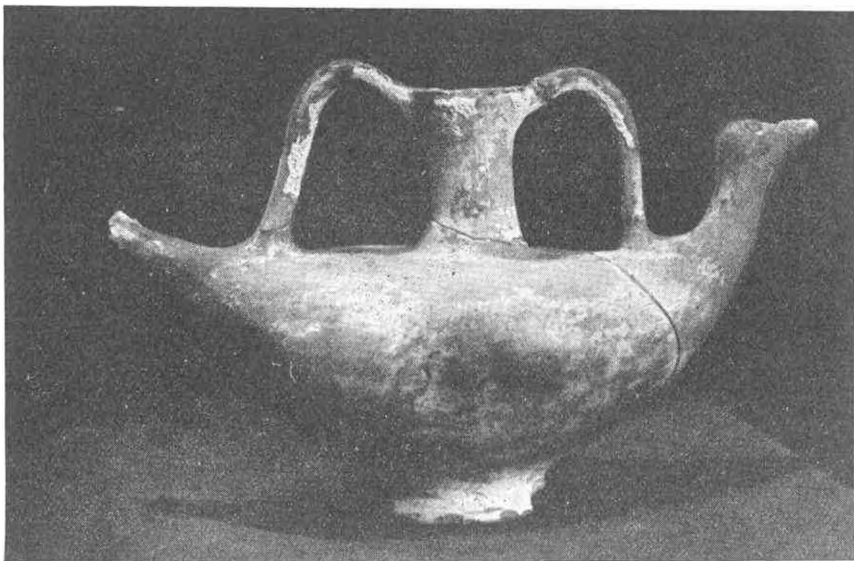
Res. 4 — Mezar.



Res. 5 — Küp mezar.



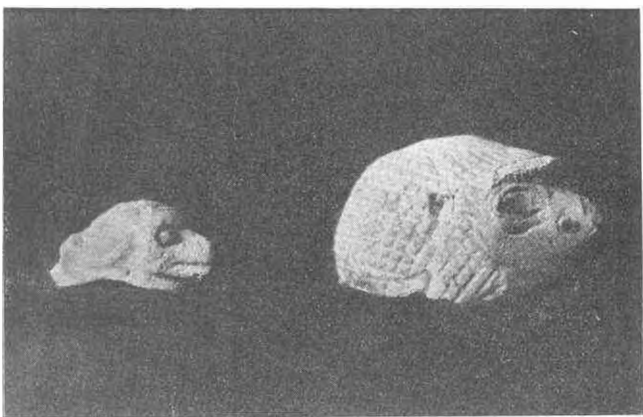
Res. 6 — Kyliks. Pişmiş topraktan.



Res. 7 — Pişmiş topraktan Askos. Kuş şekilli iki kulplu.



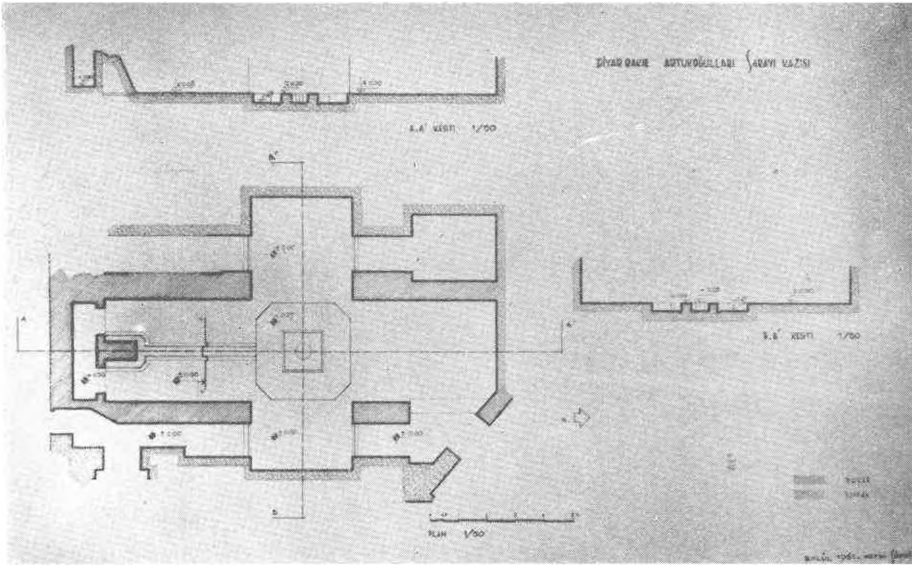
Res. 8 — a) Pişmiş topraktan kubele : Arkalıksız koltukta oturur vaziyette. b) Pişmiş topraktan kadın Ördek tutan figürü.



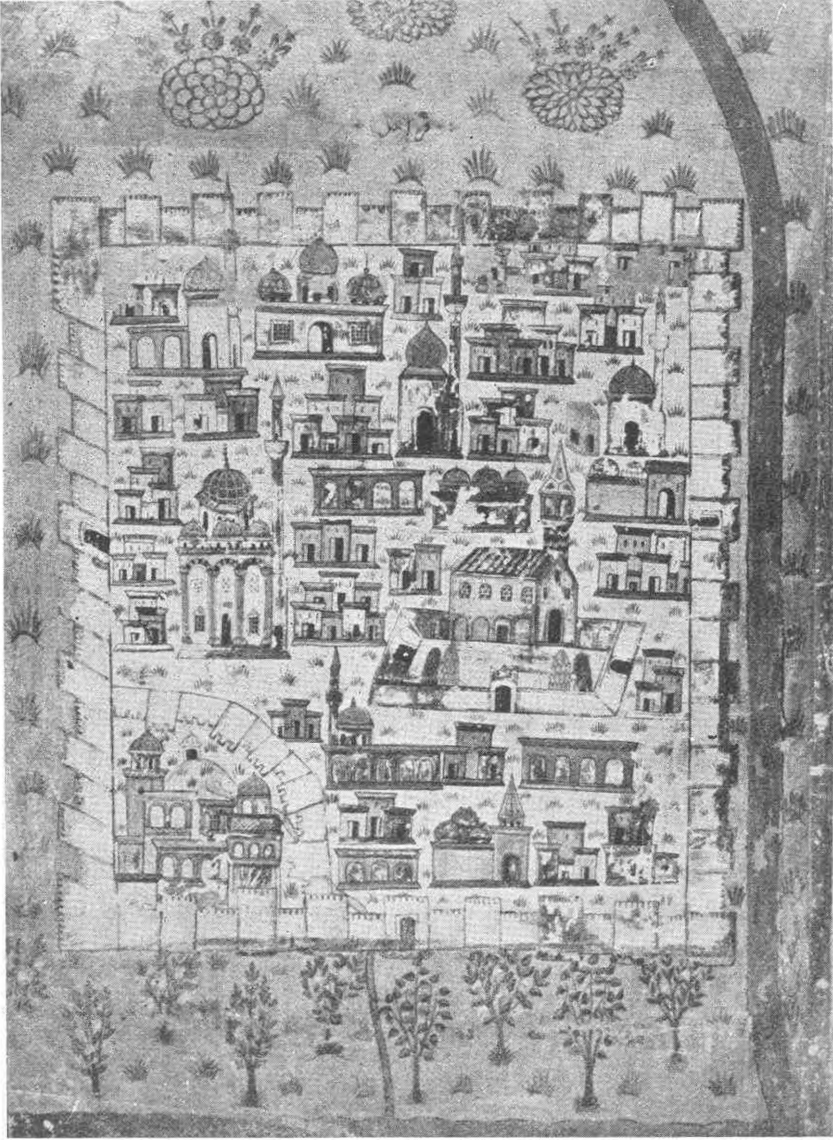
Res. 9



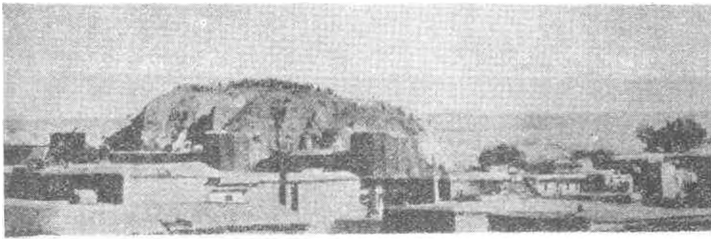
Res. 10 — Çok ince Altın Varak. üstte atlı harp arabasında iki şahıs. Bu sahne iki defa tekrar edilmiştir. Altta Aslan, boğa. Rozetler ve örgü motifi.



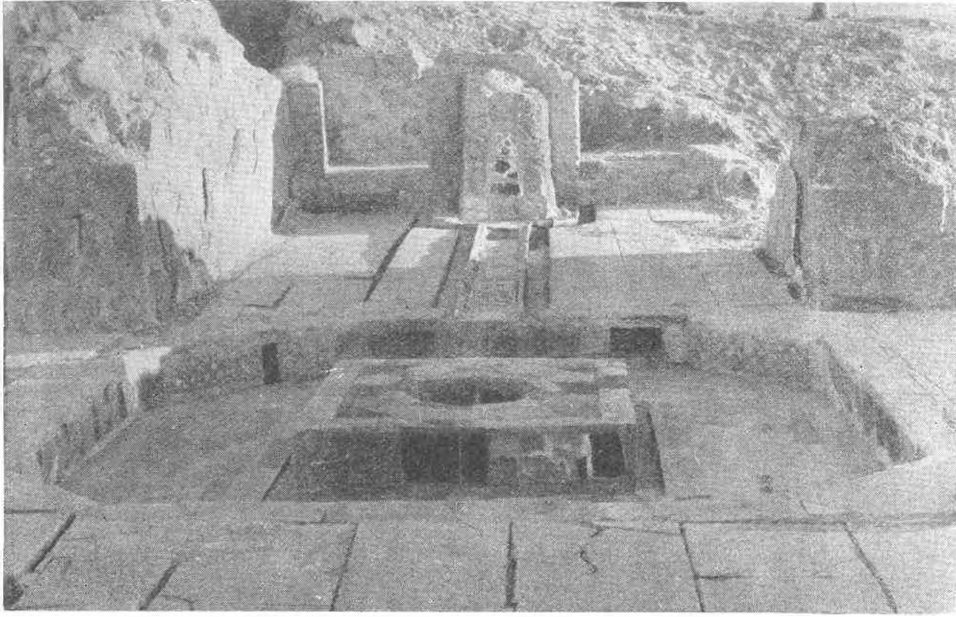
Plân : 1



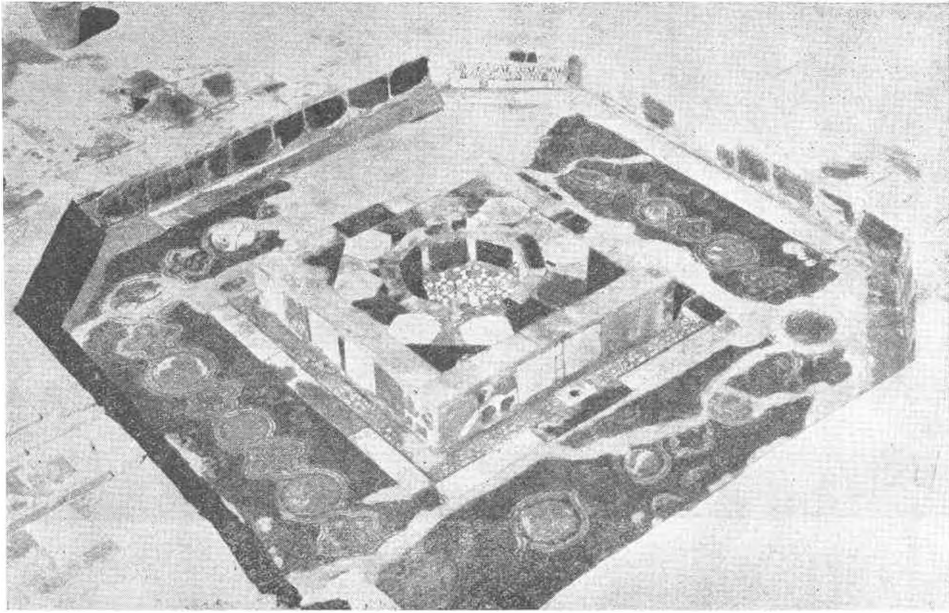
Res. 1 — Nasuh As-Silâhi Al-Matraki'nin beyanı menazili Seferi Irakeyn, sene 944 isimli yazmadaki Kara Amid Krokisi.



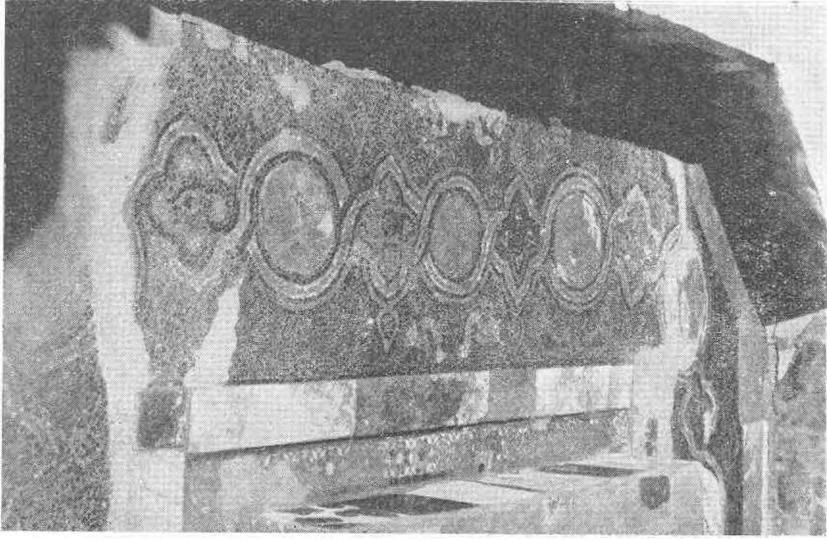
Res. 2 — 1910 dan önce Diyarbakır iç kalesinin uzaktan görüntüsü.



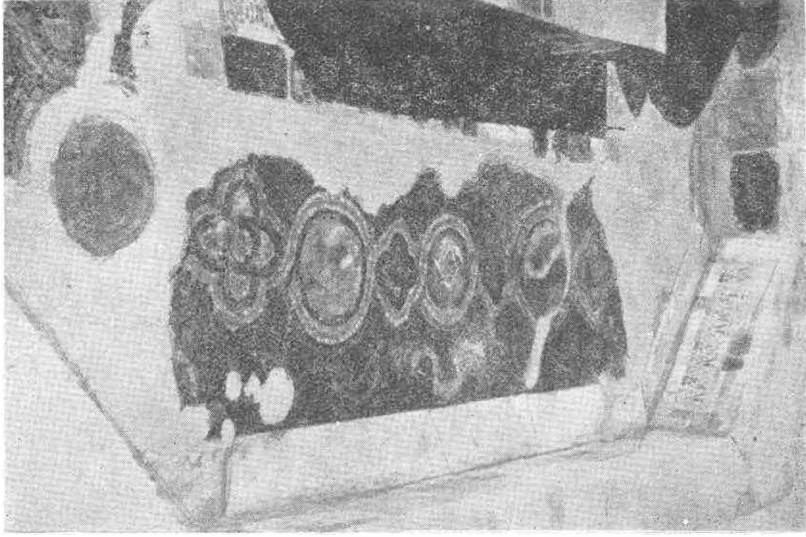
Res. 3a — Havuz ve selsebin genel görünüşü.



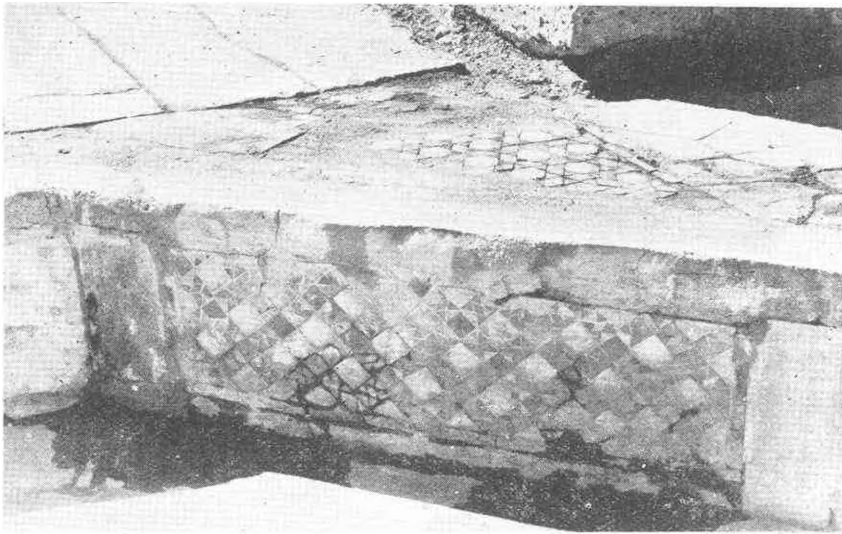
Res. 3b — Havuzun genel görünüşü.



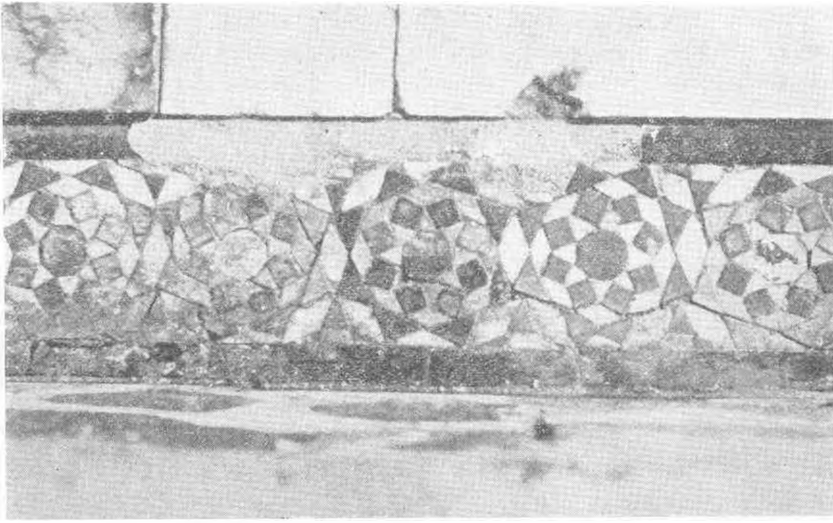
Res. 4a — Havuzun içindeki mozaik ve renkli taş dekorasyon.



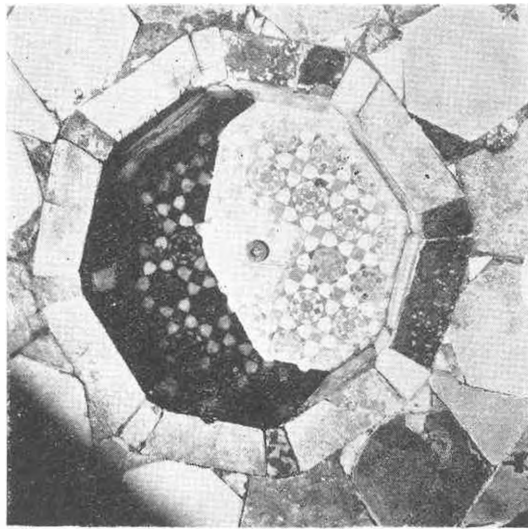
Res. 4b — Havuzun içindeki mozaik ve renkli taş dekorasyon.



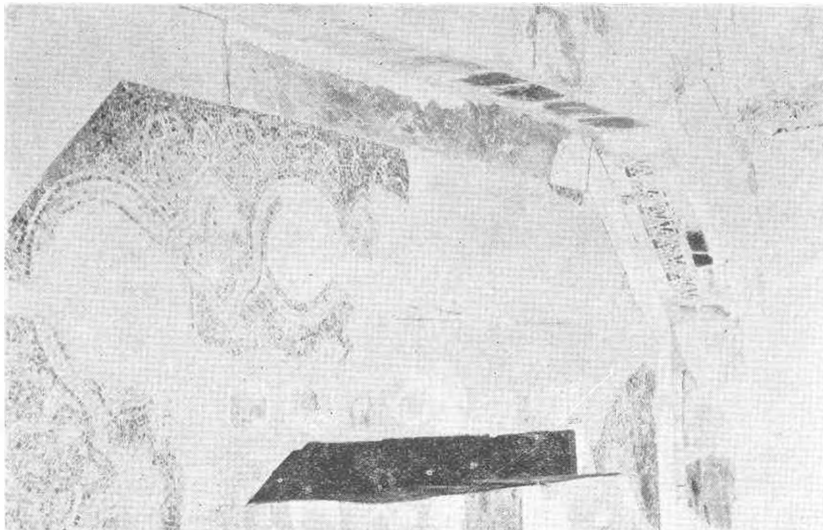
Res. 5 — Havuzun iç ve dış kenarındaki renkli taş dekorasyon.



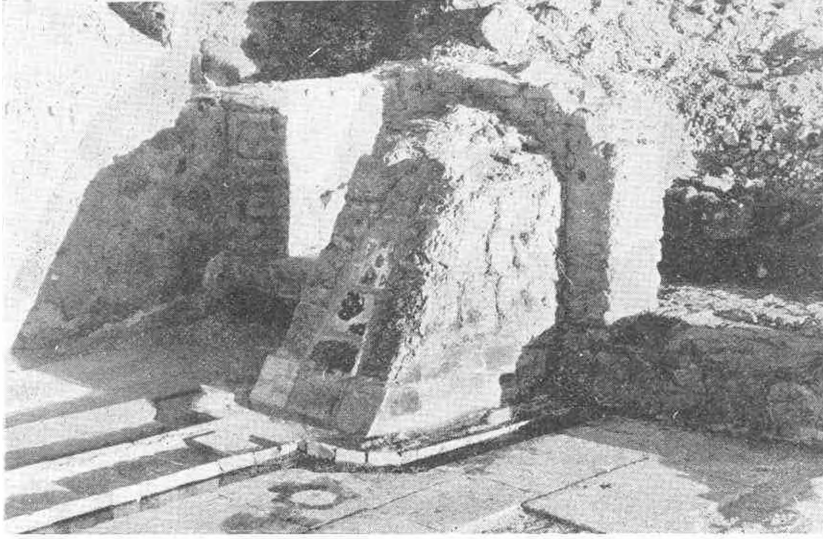
Res. 6 — Havuzun içindeki akıntı kanalının renkli taş dekorasyonu.



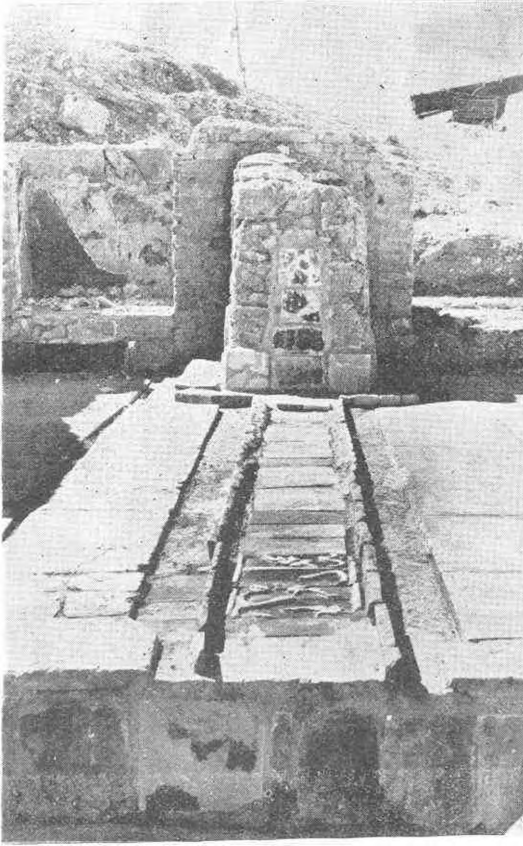
Res. 7 — Fiskiyeli kısmın zeminindeki renkli taş dekorasyon.



Res. 8 — Havuzun zeminindeki mozaik dekorasyon.



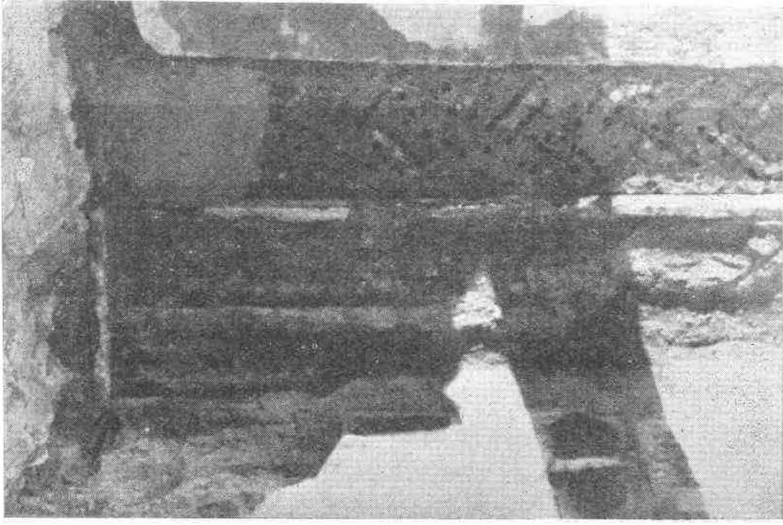
Res. 9 — Selsebil.



Res. 10 — Selsebil ve havuza giden su kanalları.



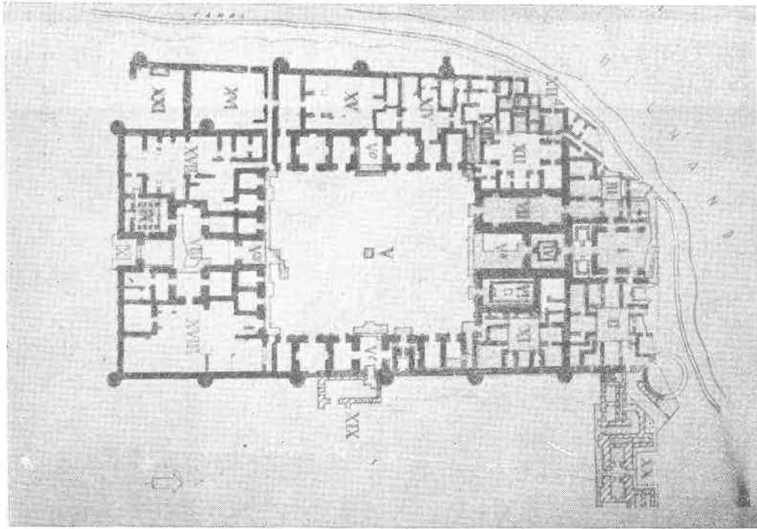
Res. 10 a — Kanaldaki kabartma çiçekli nesih yazılı çini levhalar.



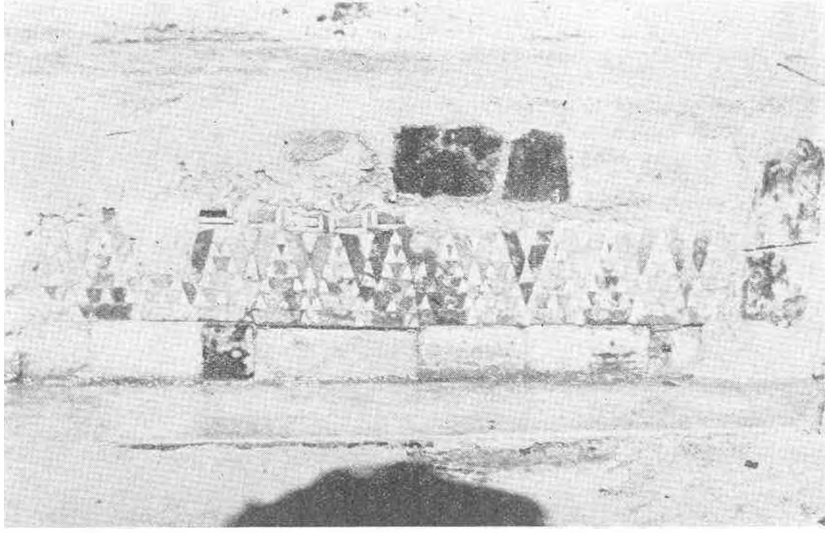
Res. 11 — Su kanallarındaki mozaik dekorasyonu.



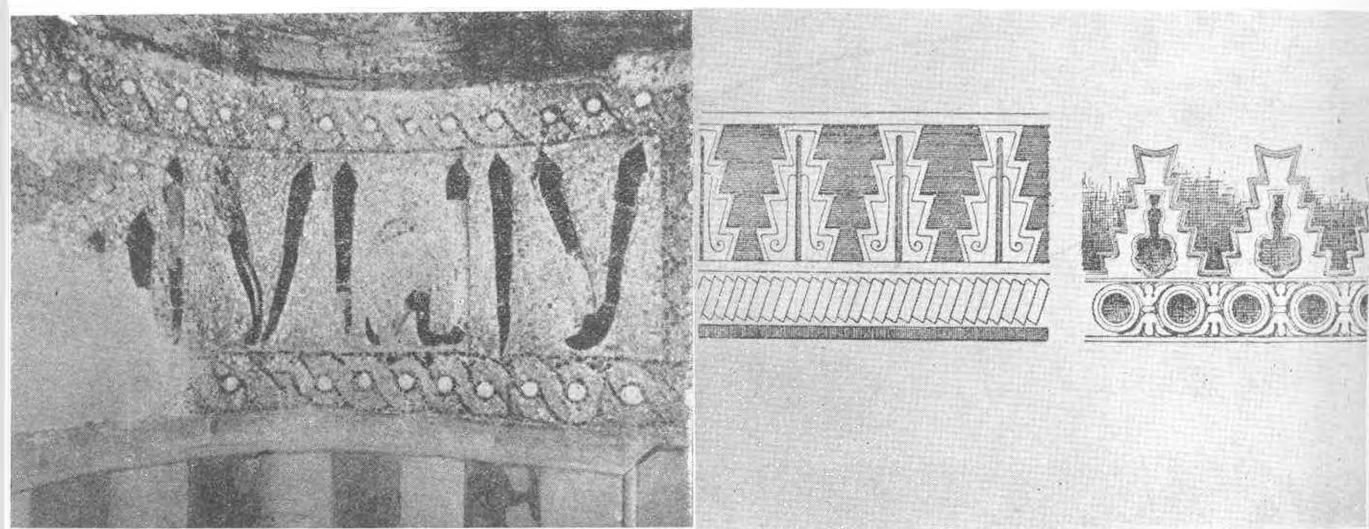
Res. 12 — Esas mekândan yan koridorlara açılan kapı.



Res. 13 — Gazneli Mahmut'un Leşkeri Bazar'daki sarayının genel plânı.

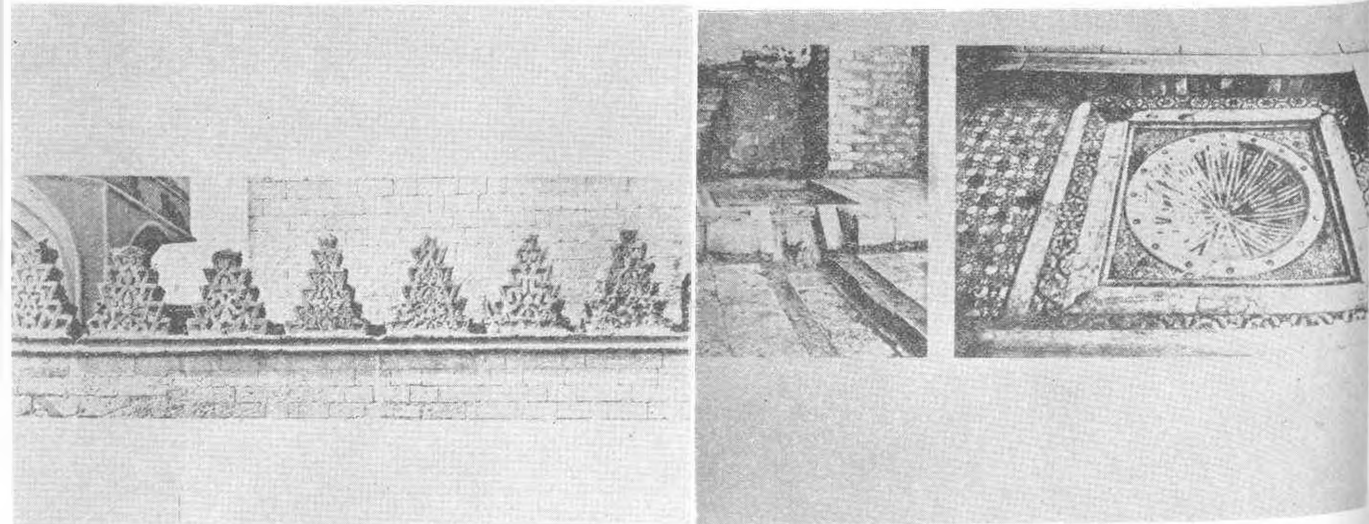


Res. 14 — Havuzun iç kenarındaki kilim motifine benzer renkli taş dekorasyonu.



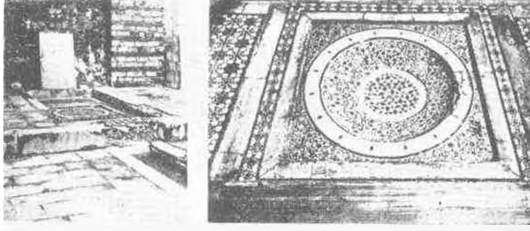
Res. 14a Kahire İbn-Tulun camii mihrap nişinin üstündeki cam mozaik dekorasyonu.

Res. 15a — Turfan ve Samarra'daki mazgal dekoru.



Res. 15b — Kalaun maristanındaki mazgallar.

Res. 16 — Kalaun maristanının Güney-Doğu cıvanının selsebil ve önündeki havuzda renkli taş dekorasyonu.



Res. 17 — Kalaun maristanının kuzey-batı eyvanının selsebili ve önündeki havuzda renkli taş dekorasyonu.



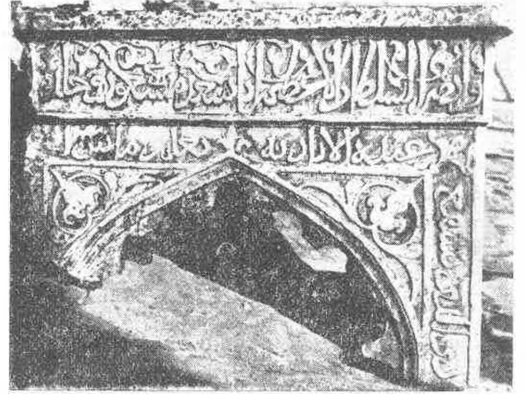
Res. 18 — Selsebilen arkasındaki kerevet kısmının çini döşemesi.



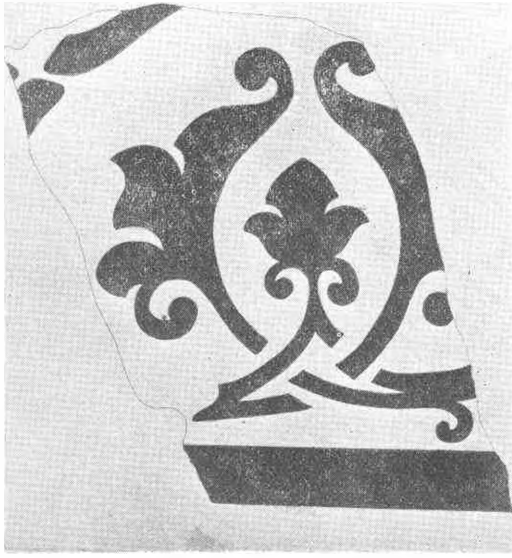
Res. 19 — Kabartma tavus kuşlu çini levha.



Res. 20 — Kitabe çinileri.



Res. 21 — Gazne sarayında Sultan Mes'ut III. un adı yazılı mermer kapı kemeri.



Res. 22 — Diyarbakır sarayındaki taş kabartma.



Res. 23a — Melik Salih Mahmut'un sikkesindeki çift başlı Kartal.



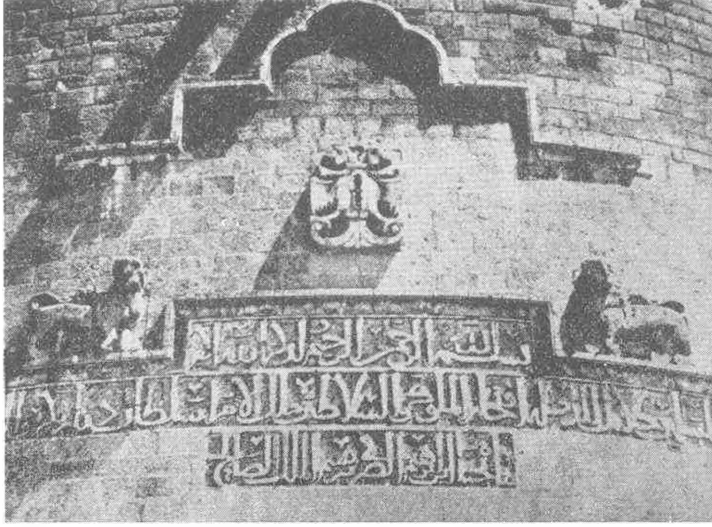
Res. 23b — Aynı sikkenin arka yüzü.



Res. 24a — Melik Salih Mahmudun sikkesindeki çift başlı Kartal.



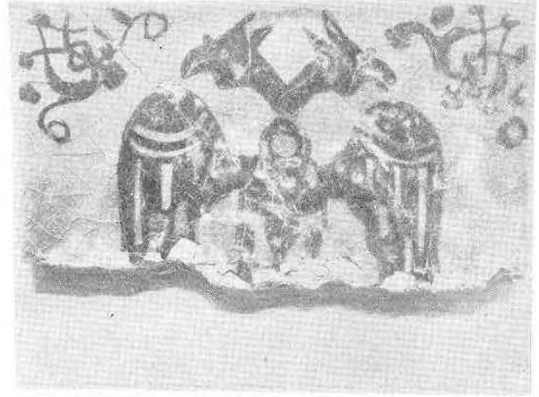
Res. 24b — Melik Salih Mahmudun 617 tarihli ishkesindeki çift başlı Kartal.



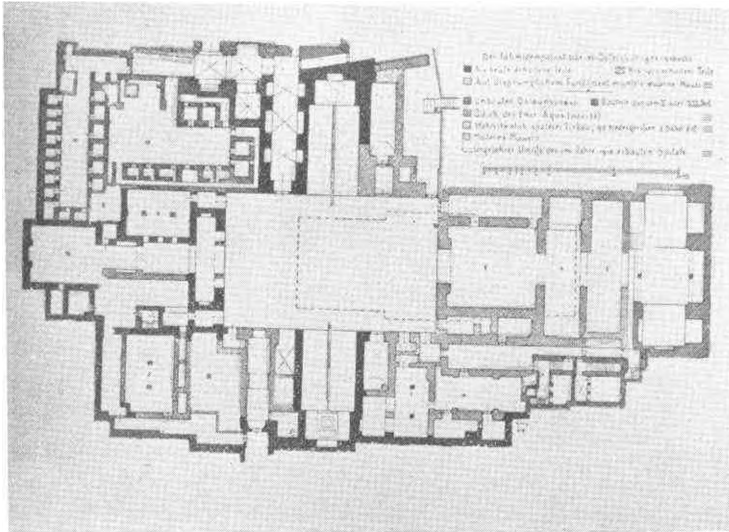
Res. 25 — Diyarbakır surlarında yedi kardeş burcu çift başlı kartal arması.



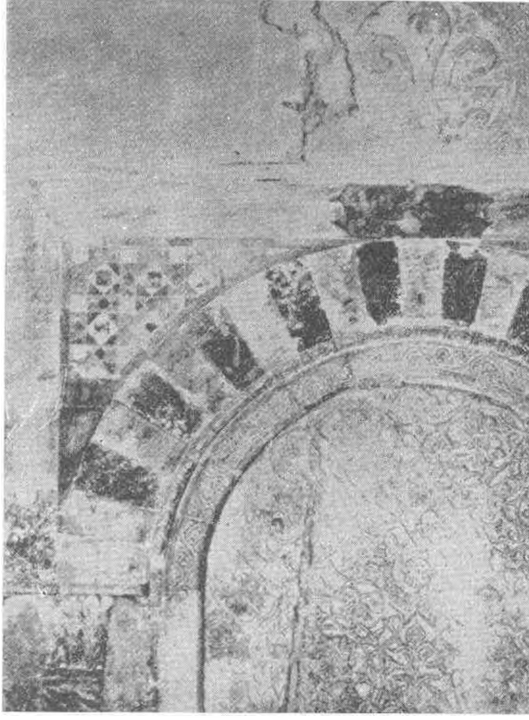
Res. 25a — Sarayda bulunan çift başlı kartal dekorlu çini karo.



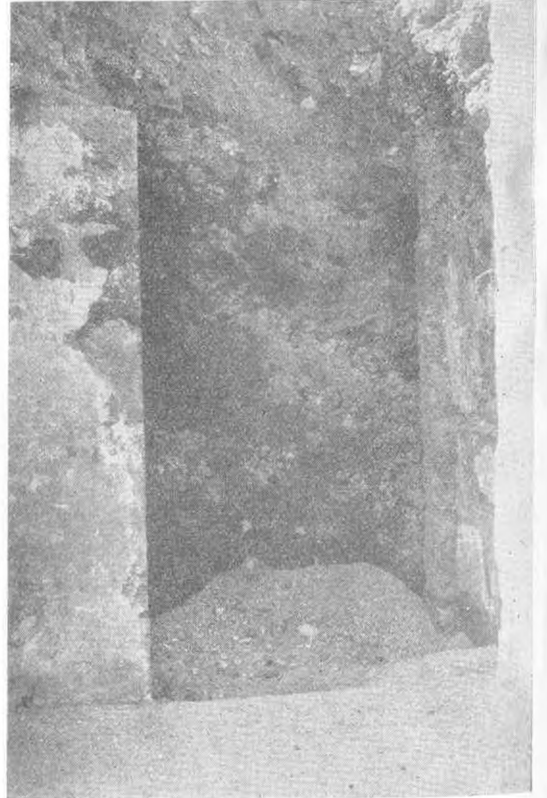
Res. 25b — Havuzun kenarına sonradan yerleştirilmiş olan çift başlı kartal dekorlu çini karo parçası.



Res. 26 — Sultan Kalaun maristanı plânı. (Herz'in plânı 1913)



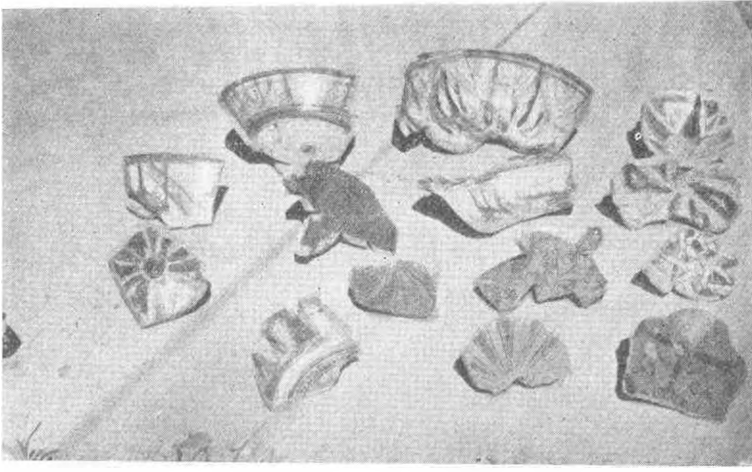
Res. 27 — Nureddin Zengi'nin Şam'daki maristanındaki türbesinde kesmetaş dekorasyon.



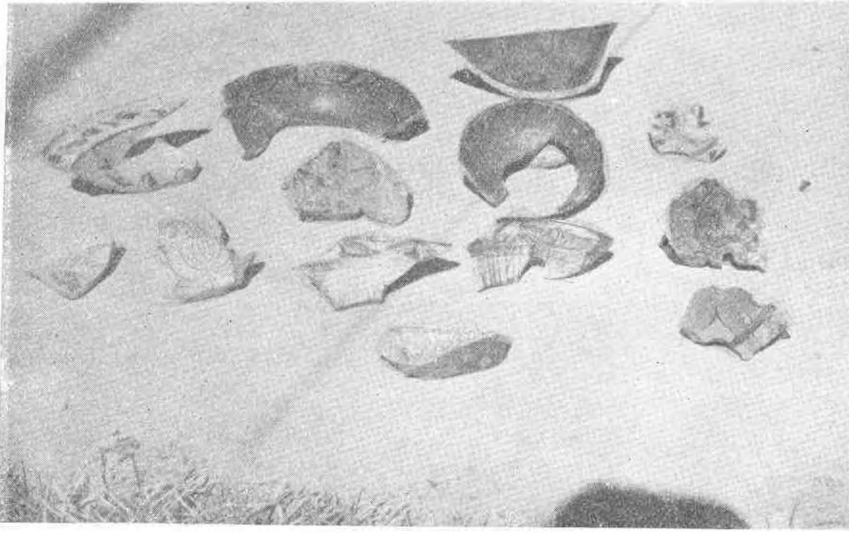
Res. 29 — Odanın kapısı.



Res. 28 — Aynı koridordan detay.



Res. 30 — Çıkarılan renkli keramikler.



Res. 31 — Çıkarılan renkli keramikler.



Res. 32 — Hafriyatta çıkan sırsız keramikler.



Abb. 1

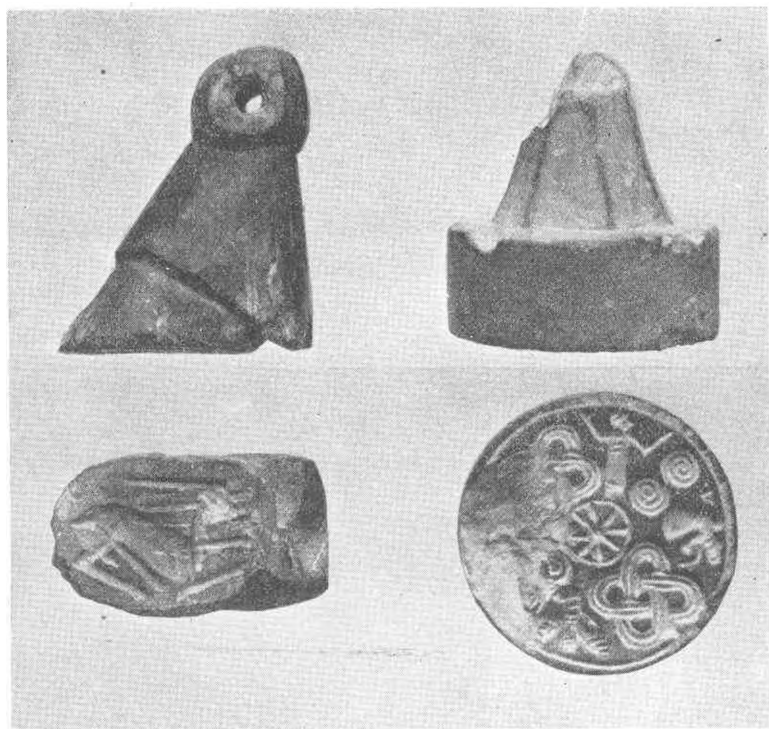


Abb. 2

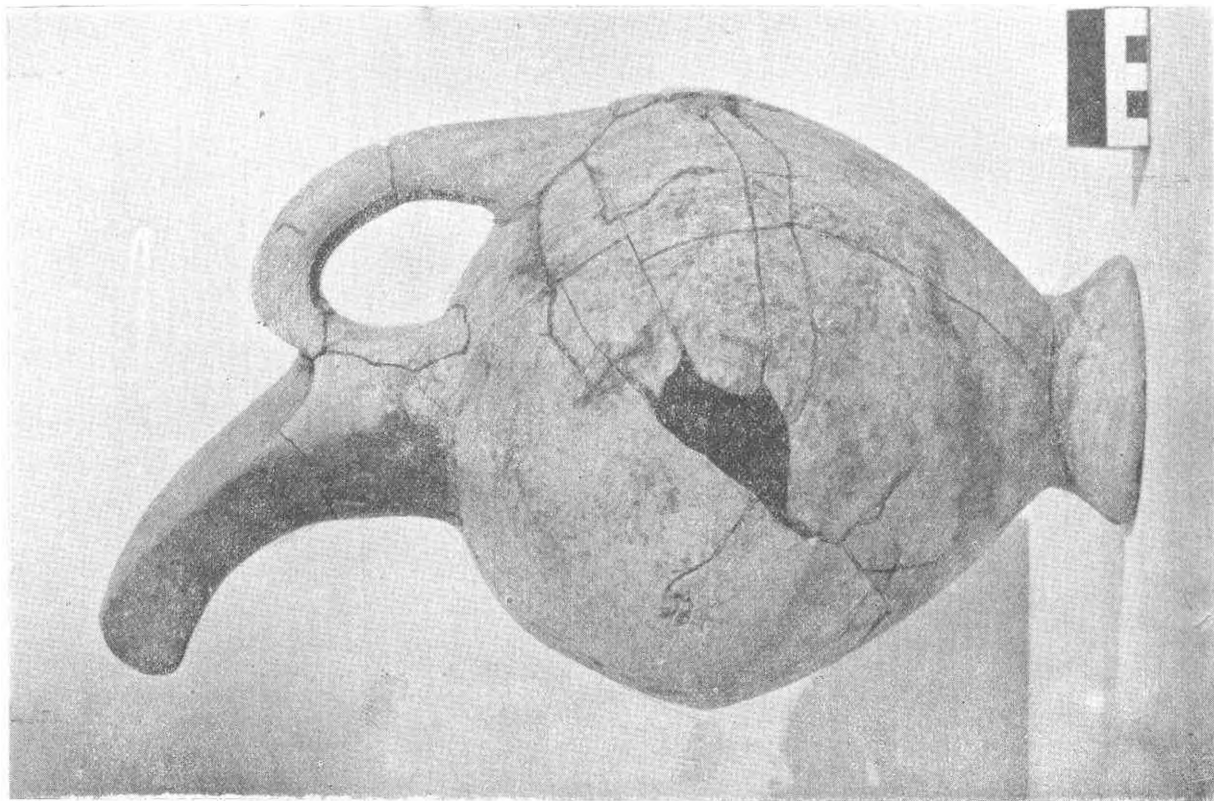


Abb. 3b

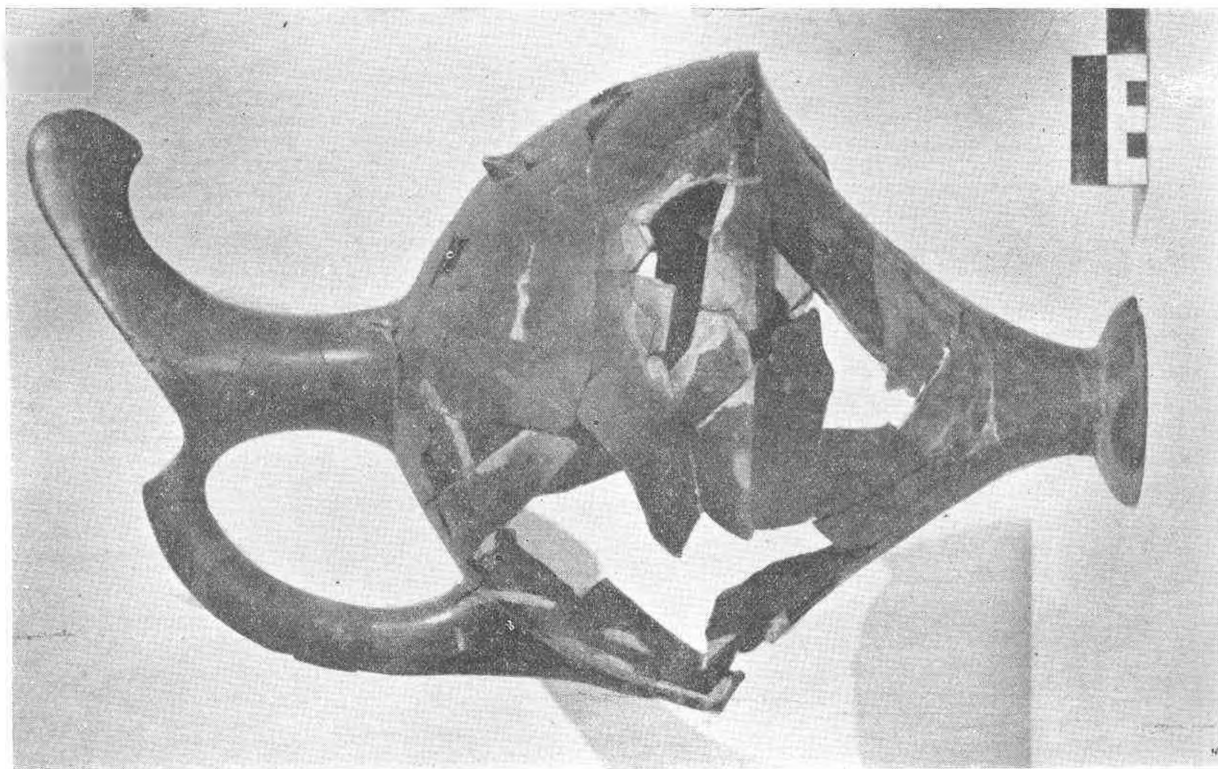


Abb. 3a

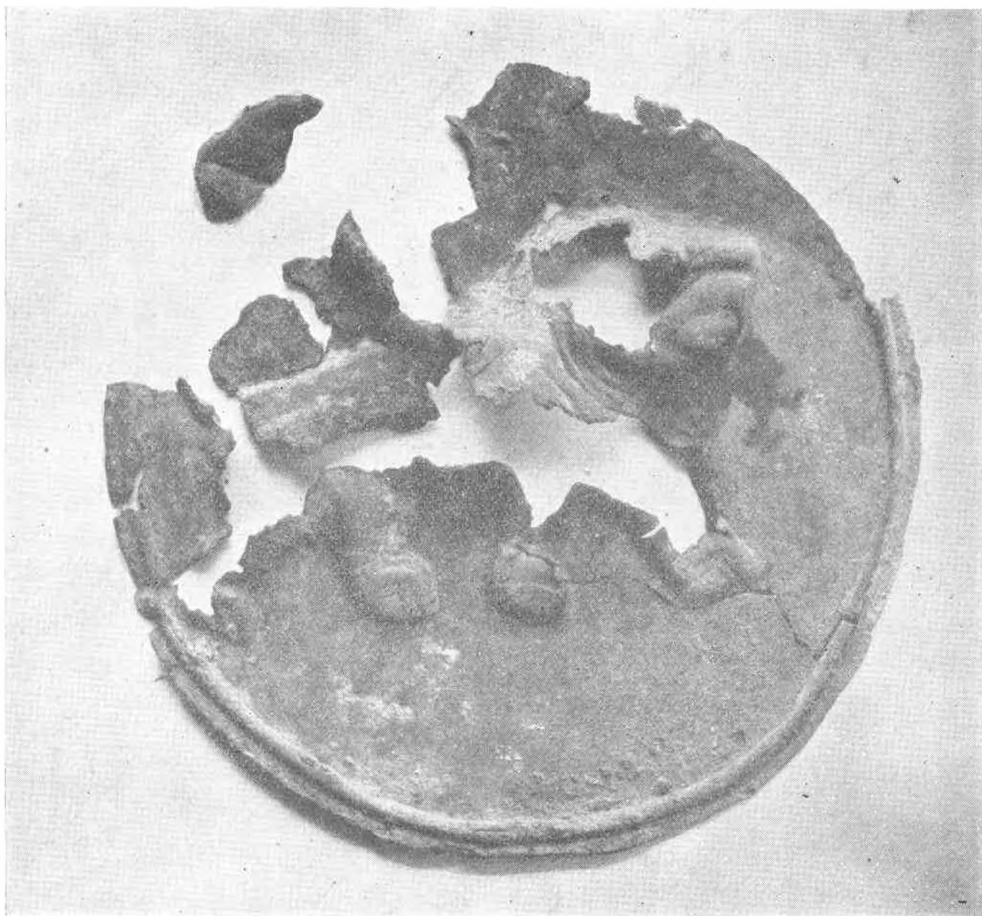


Abb. 4

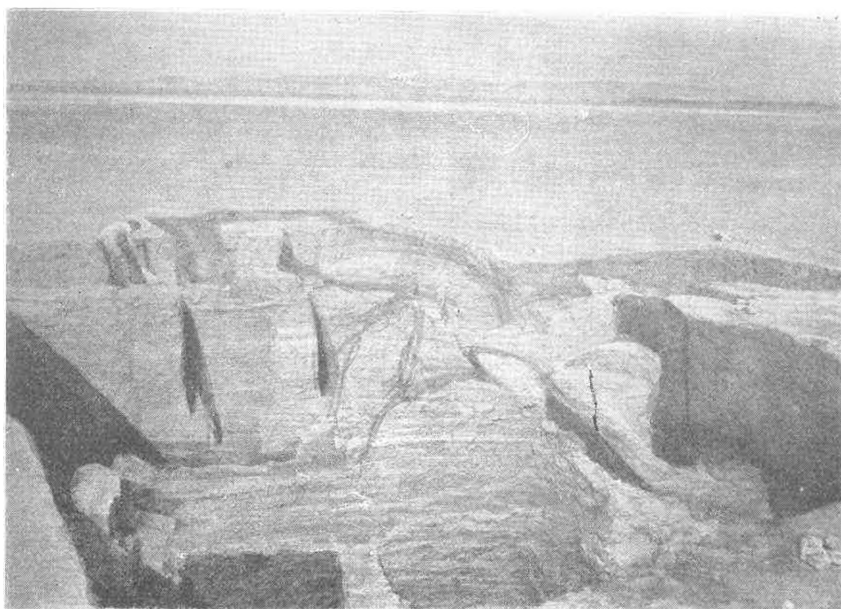


Fig. 1 — General view at the end of the excavations. The plaster Room shows at the left in the middle.

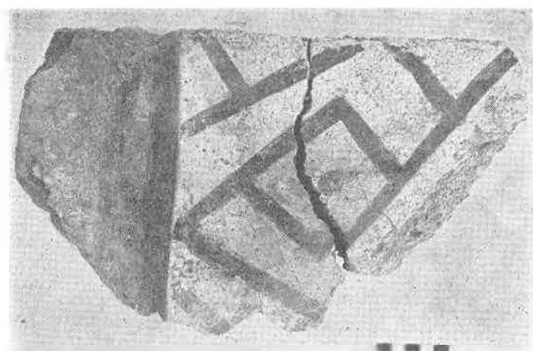


Fig. 2 — Wall plaster from the plaster room. On edge piece with bevelled band in plain red. (No. 147c)



Fig. 3 — Bowl of black burnished ware decorated with incised and white filled patterns, from the yellow house deposit. (No. 28)



Fig. 1 — Kazı başlangıcı



Fig. 2 — Kazı başlangıcı

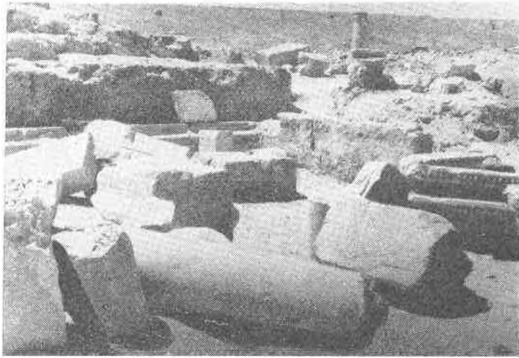


Fig. 3 — Kazının 21. günü.



Fig. 4 — Kazının 20. günü

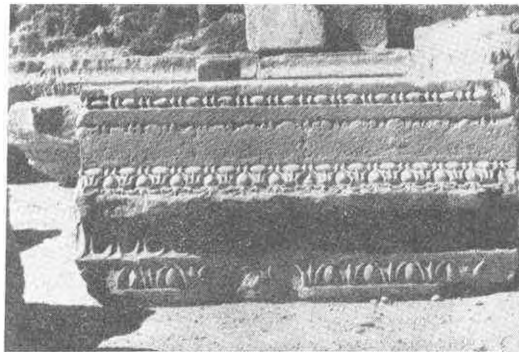


Fig. 5



Fig. 6

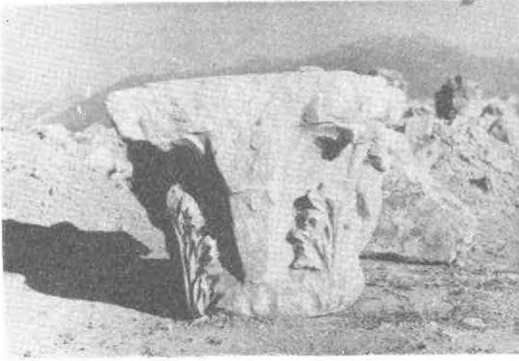


Fig. 7



Fig. 8



Fig. 9



Fig. 10

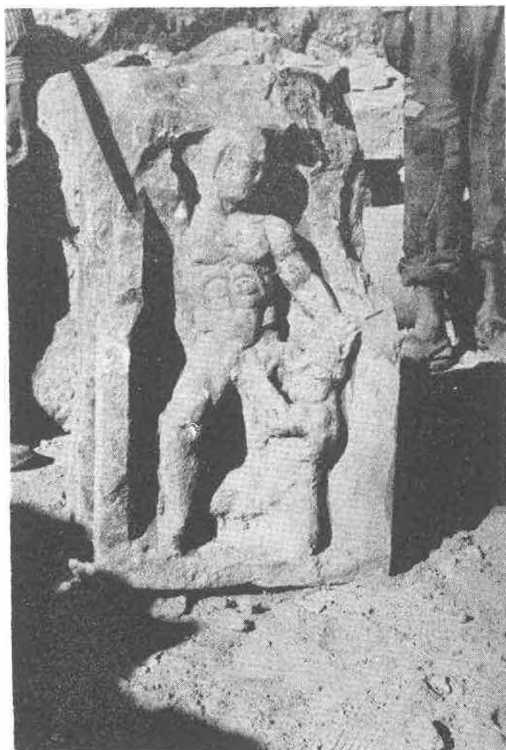


Fig. 11



Fig. 12

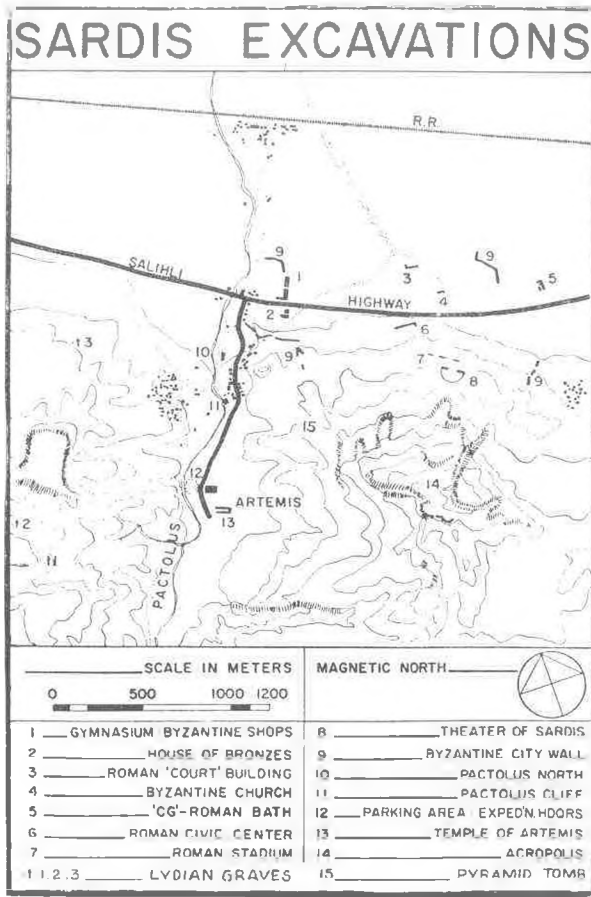


Fig 1

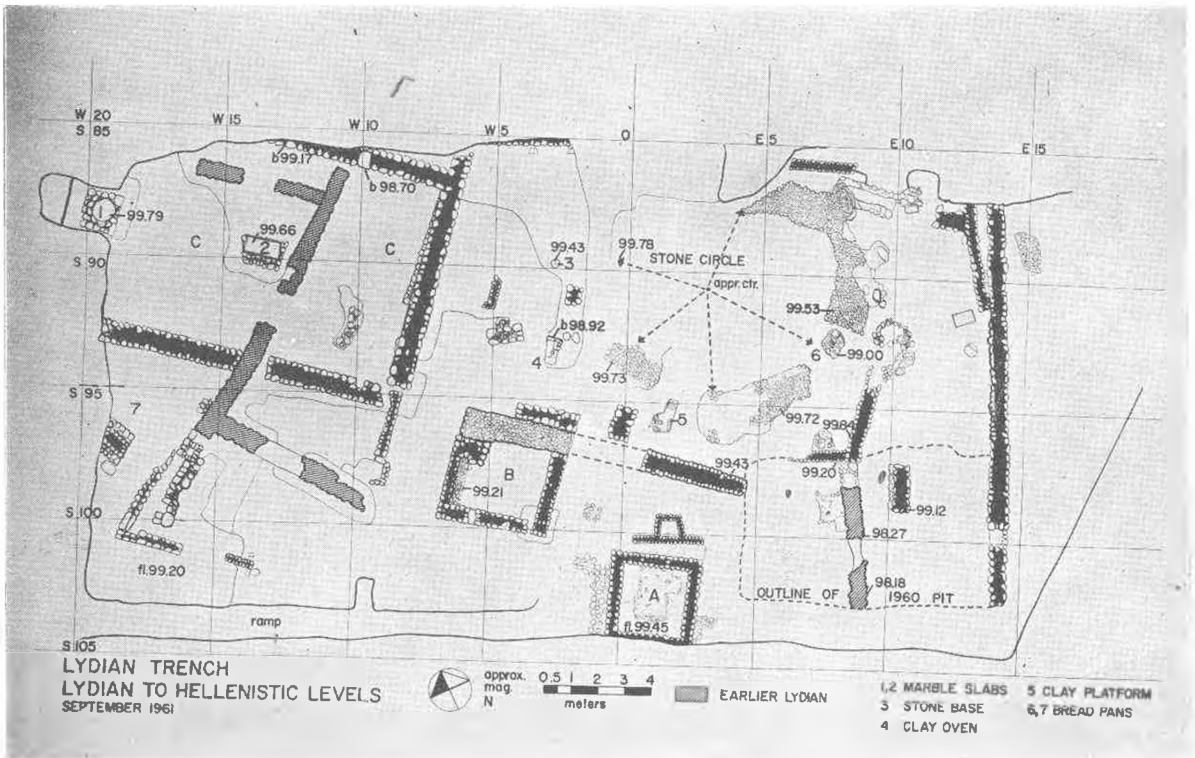


Fig. 2 — Hellenistic and Lydian Levels, House of Bronzes

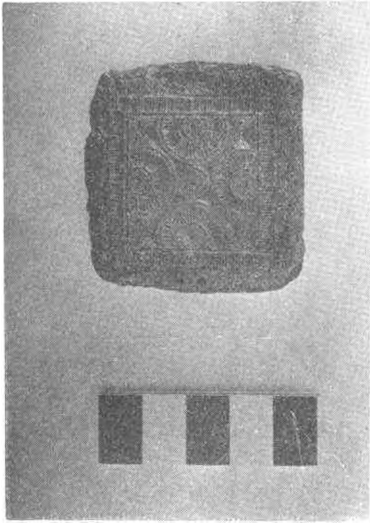


Fig. 3



Fig. 4 — Lydian Vases, Lydian (Trench) house of Bronzes.



Fig. 5 — Horse head from a terra cotta frieze. Lydian Trench. House of bronzes.

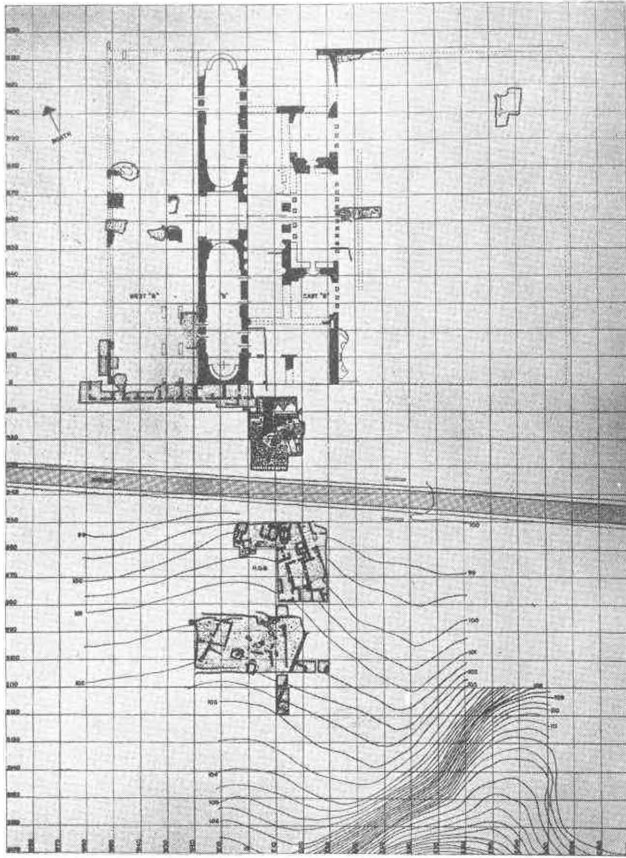


Fig. 6 — Plan of Band House of branzas sector.



Fig. 7 — Roman road. Lower left, strips of Byzantine and ottoman road, Center; Byzantine shops and Central gymnasium building in back ground.

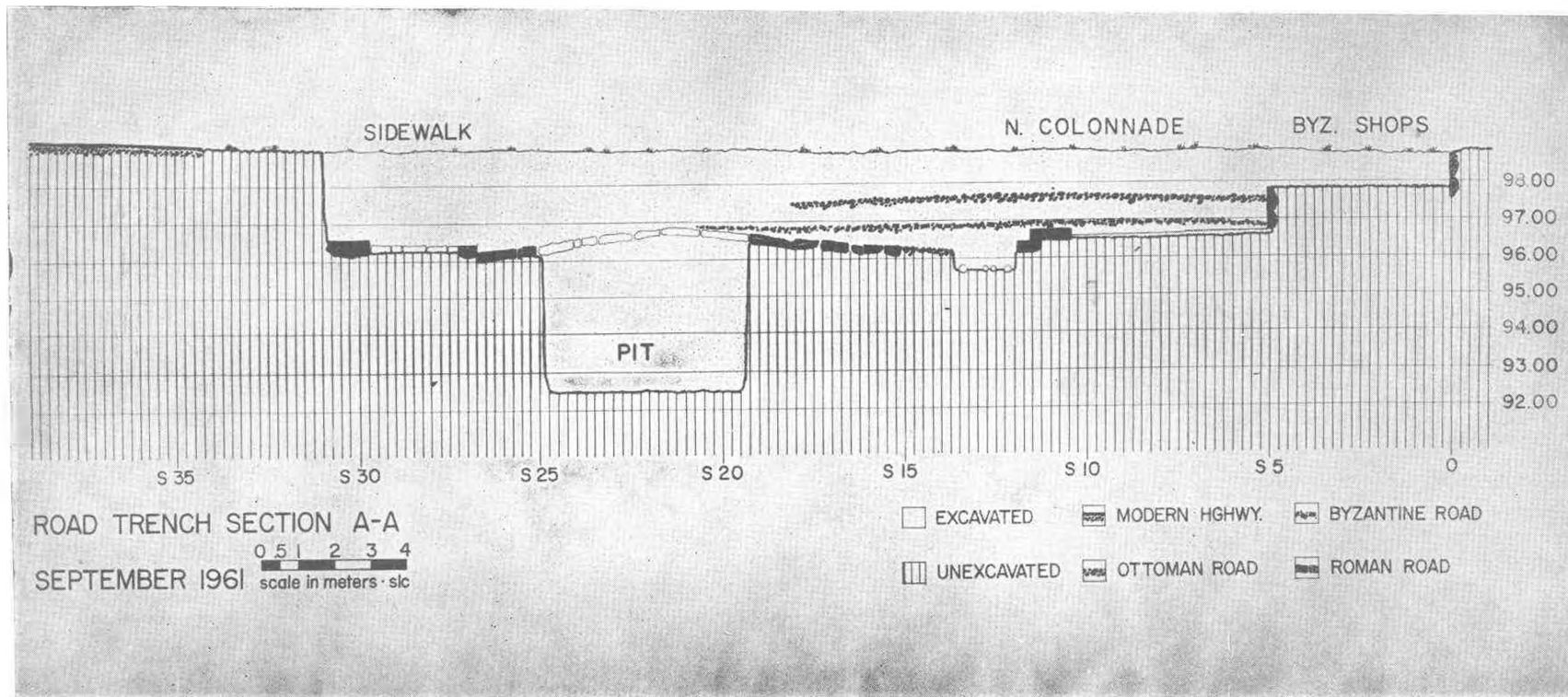


Fig. 8 — Road Trench sector, North - South section, A - A on plan fig. 9.

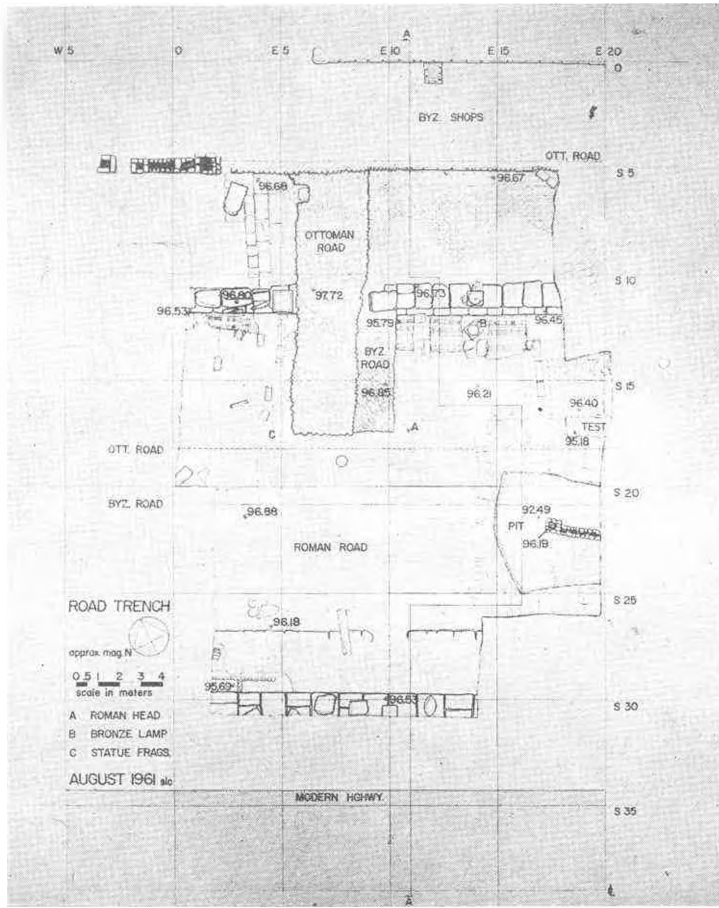


Fig. 9 — Road Trench, plan (Segment of ottoman and Byzantine road. Left standing for Central purposes.)

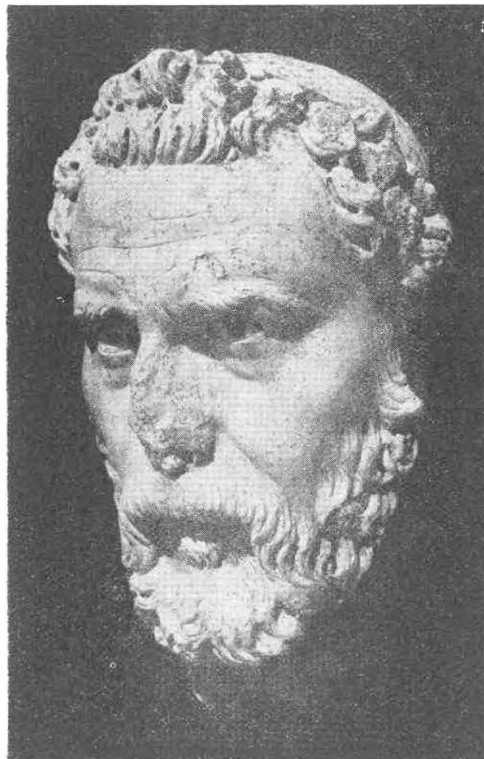


Fig 10

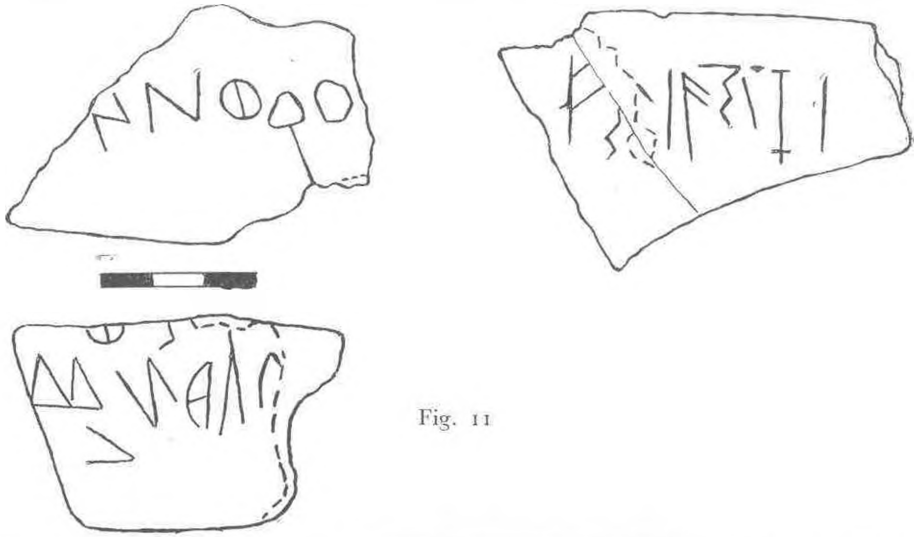


Fig. 11



Fig. 12

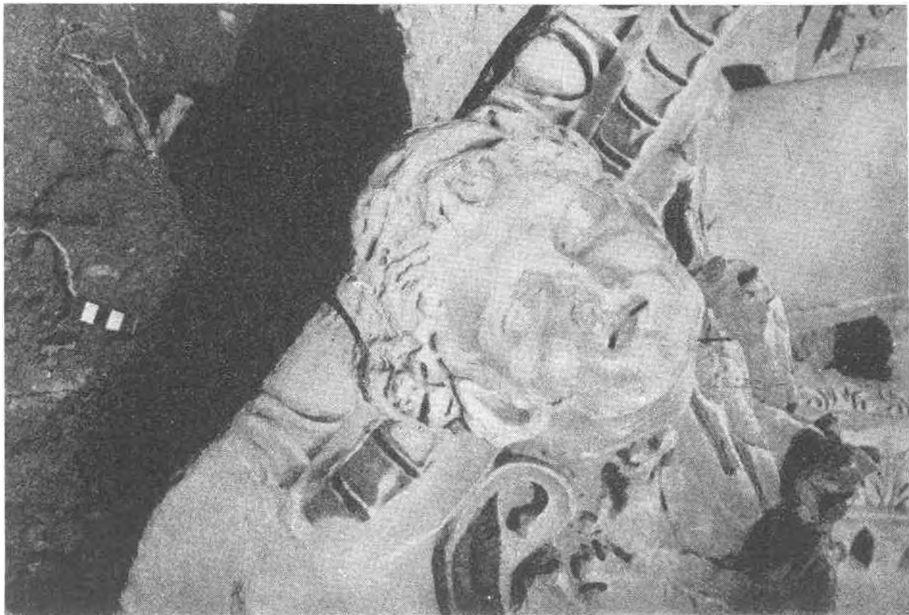


Fig. 13

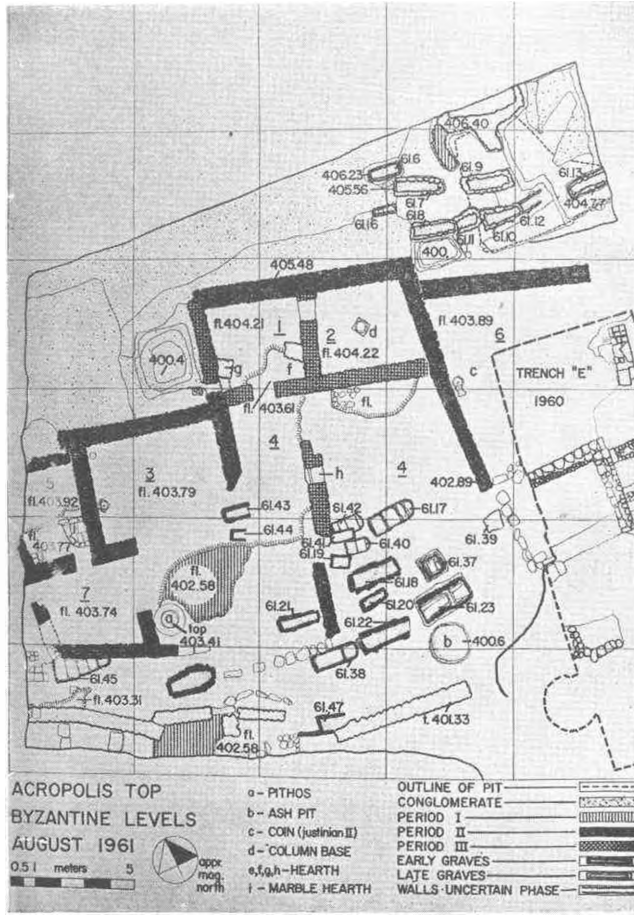


Fig. 14 — Acropolis plan of the Byzantine Levels

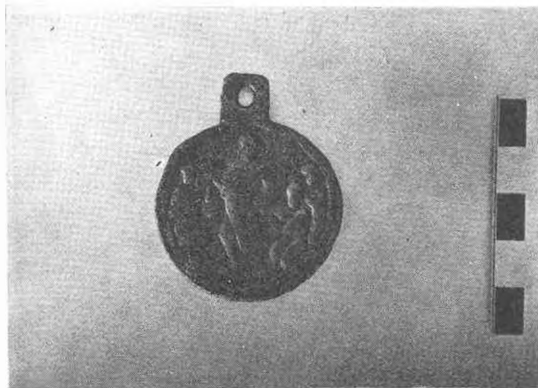


Fig. 15 — Byzantine Bronze Medallion, Acropolis.



Fig. 16 — Detail of Wall painting in Peacock tomb (gravebl. 14)

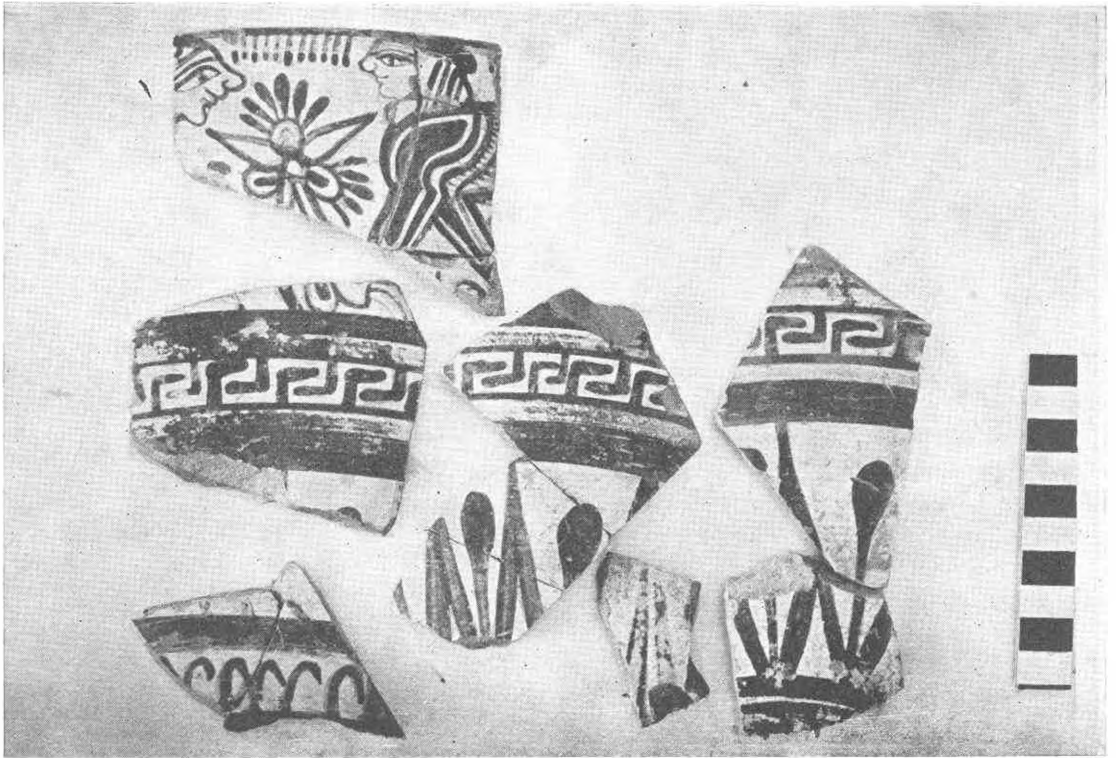


Fig. 17 — Fragments of Aeolic Vase from Lydian Levels at PN.



Fig. 18 — Fragment of colossal statue of Antonious Pius, from Artemis temple.

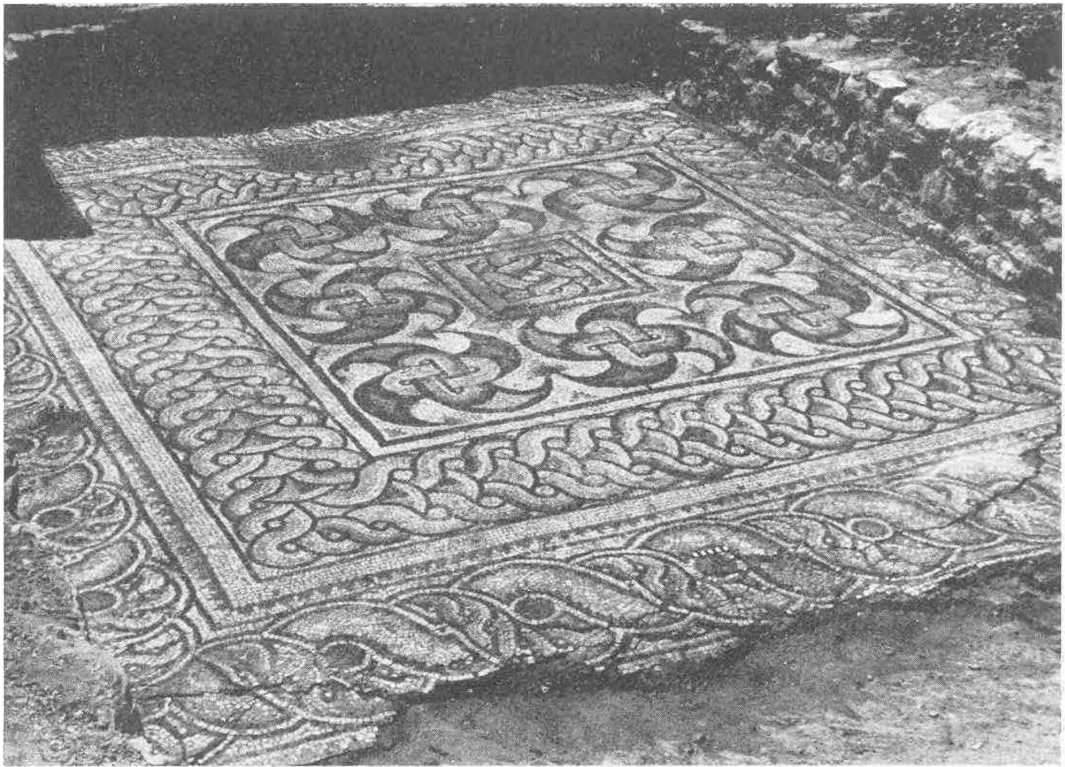


Fig. 19 — Mosaic of Roman bath Complex.



Fig. 20 — Lydian Skyphos.

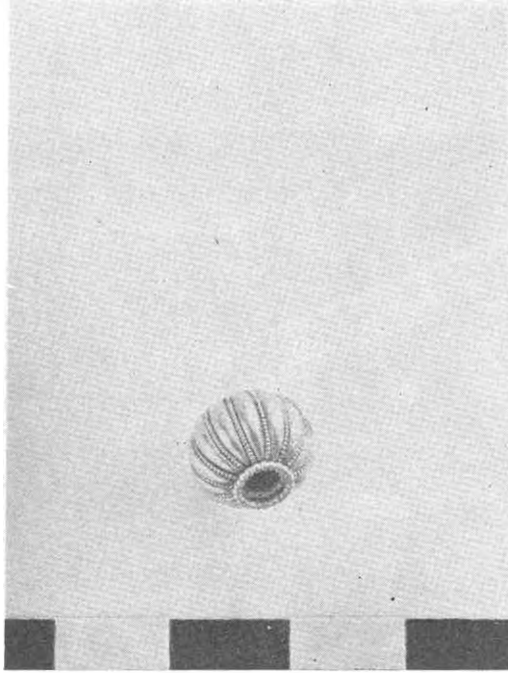


Fig. 21 — Gold Bead from grave 1961. 2.



Fig. 22 — Agate pendant on gold wire. grave 1961. 1 2.

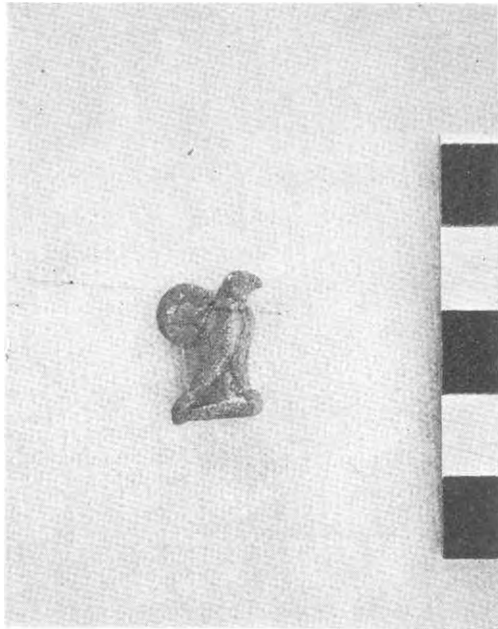
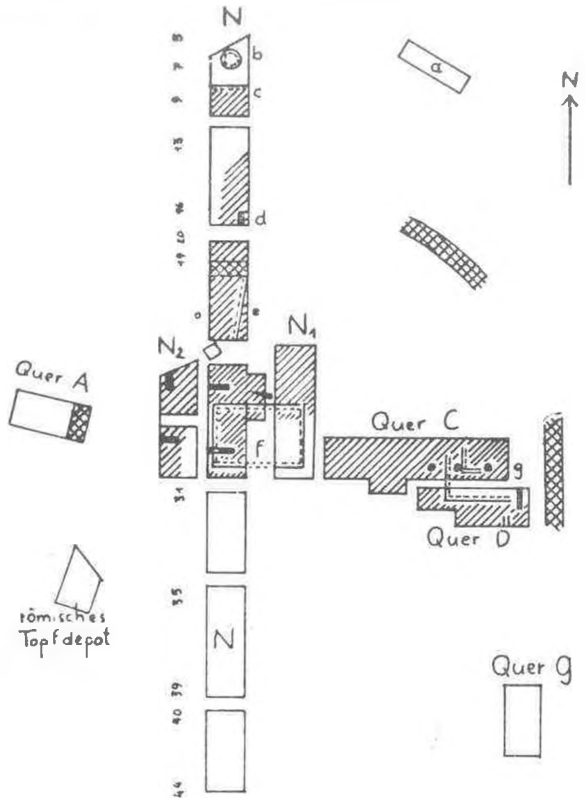


Fig. 23 — Silver hawk, grave 61, 62.

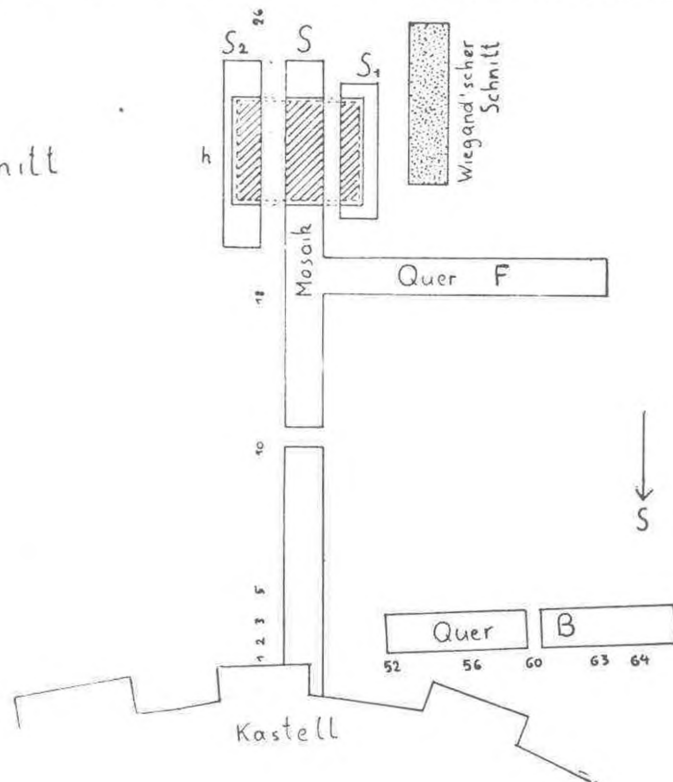
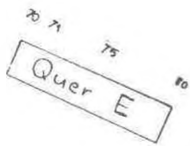
Schematische Planskizze

Nord-Schnitt

- arch Reste
- Fundamente des 5-Jh
- ▨ arch. Schicht
- ▩ mittelalterl. u byzant. Stadtmauer
- a Bossenquadern, frühe griech. Befestigungsmauer
- b hellenist Brunnen
- c Mauer des 5. Jh
- d Mauerrest des 5. Jh
- e Mauer des 5. Jh.
- f grosses Fundament des 5 Jh überbaut arch Reste. N u. westl weitere Mauern des 5 Jh
- g arch. Pfostenlöcher
- h Haus des 5. Jh



Süd-Schnitt



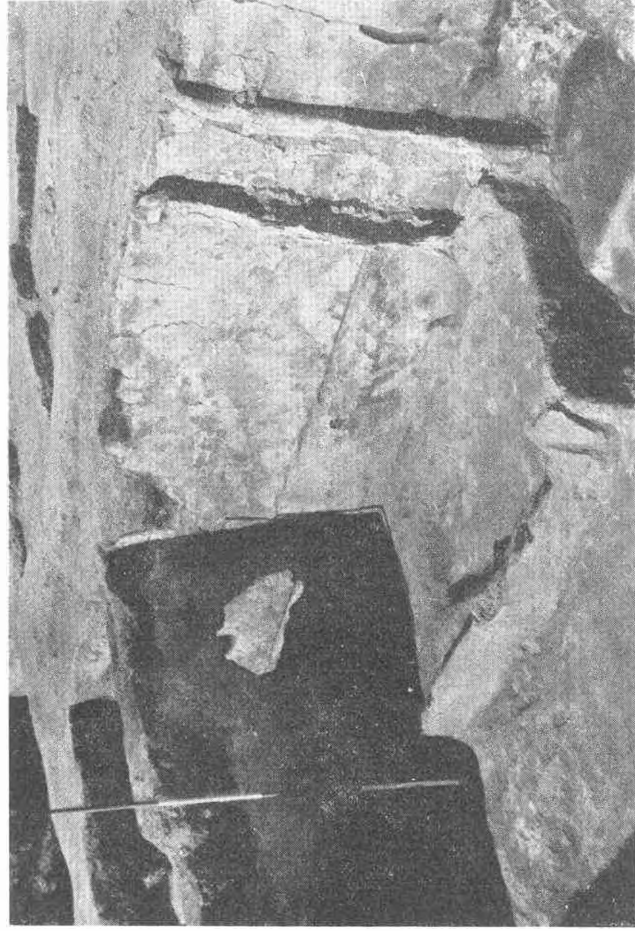


Fig. 1



Fig. 2

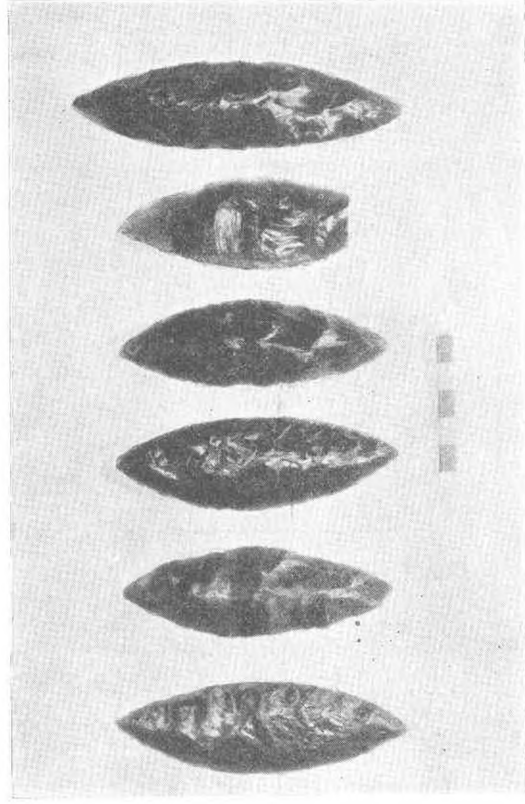


Fig. 3

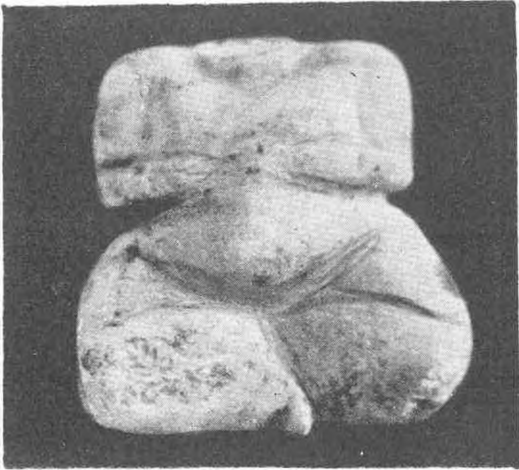


Fig. 4

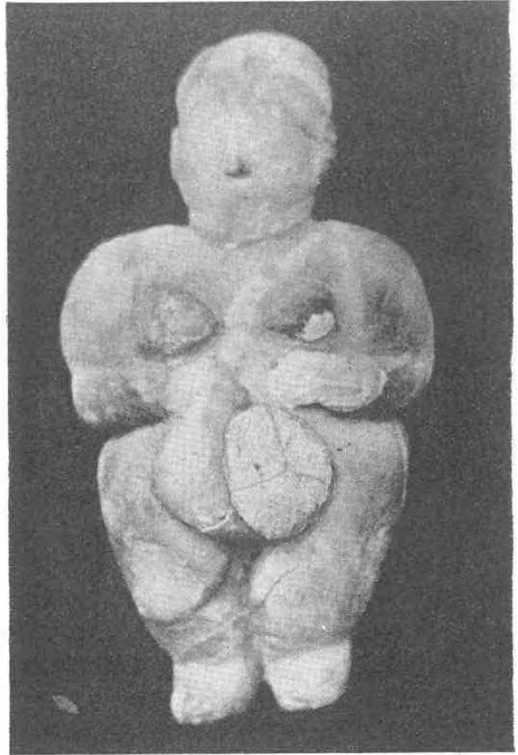


Fig. 5



Fig. 6

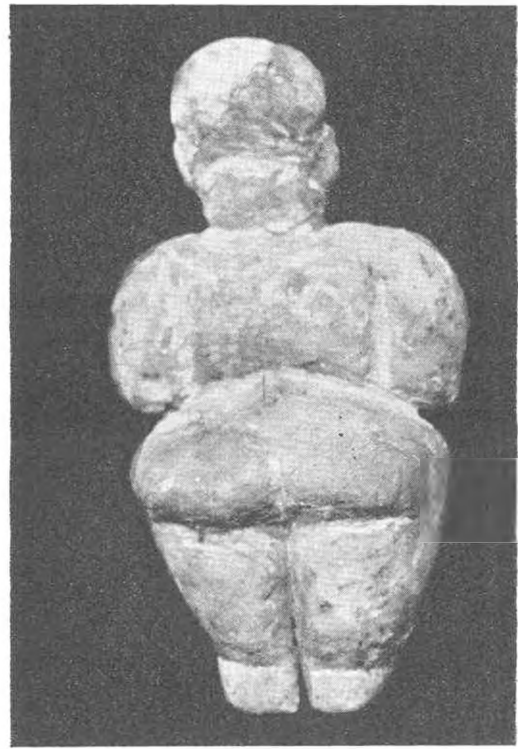


Fig. 7



Fig. 8



Fig. 9

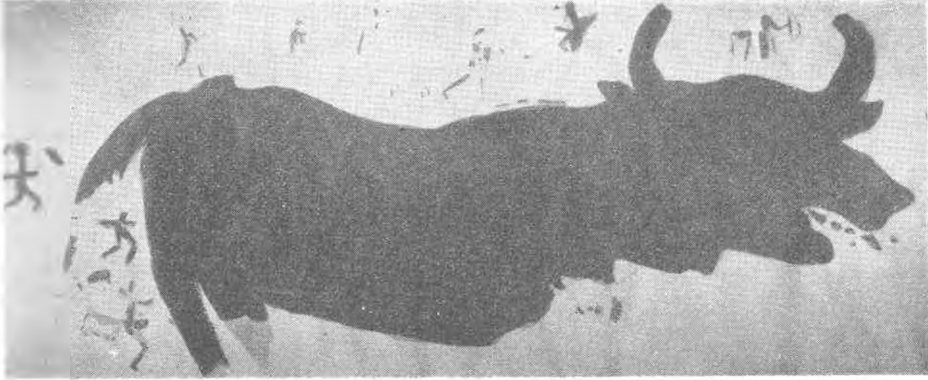


Fig. 10

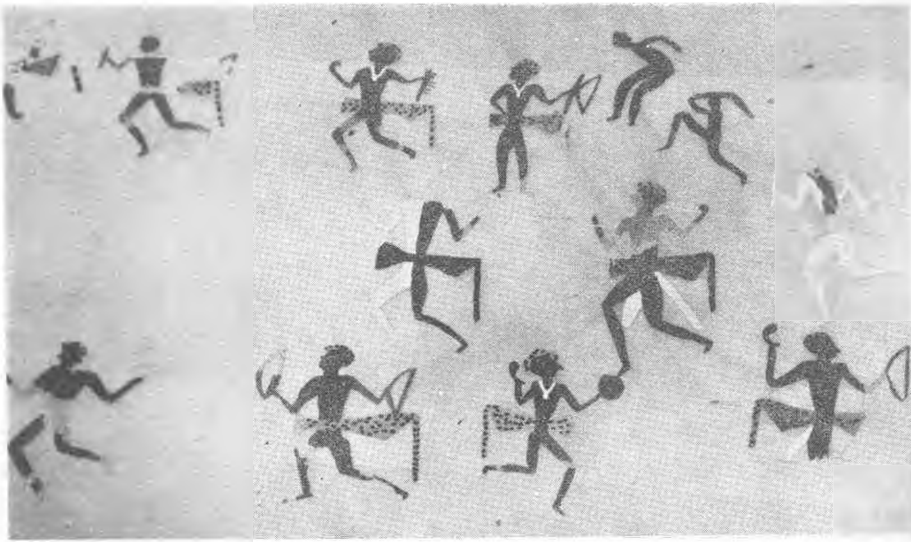


Fig. 11

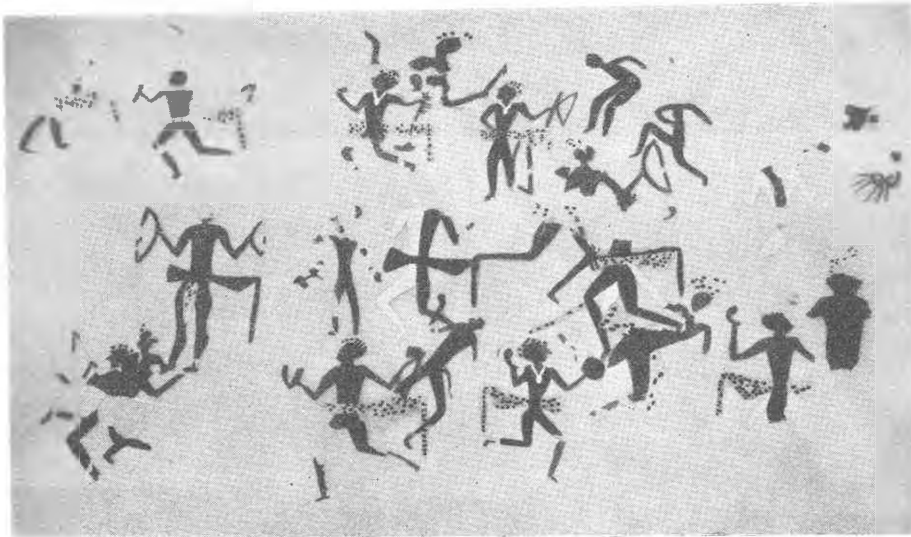


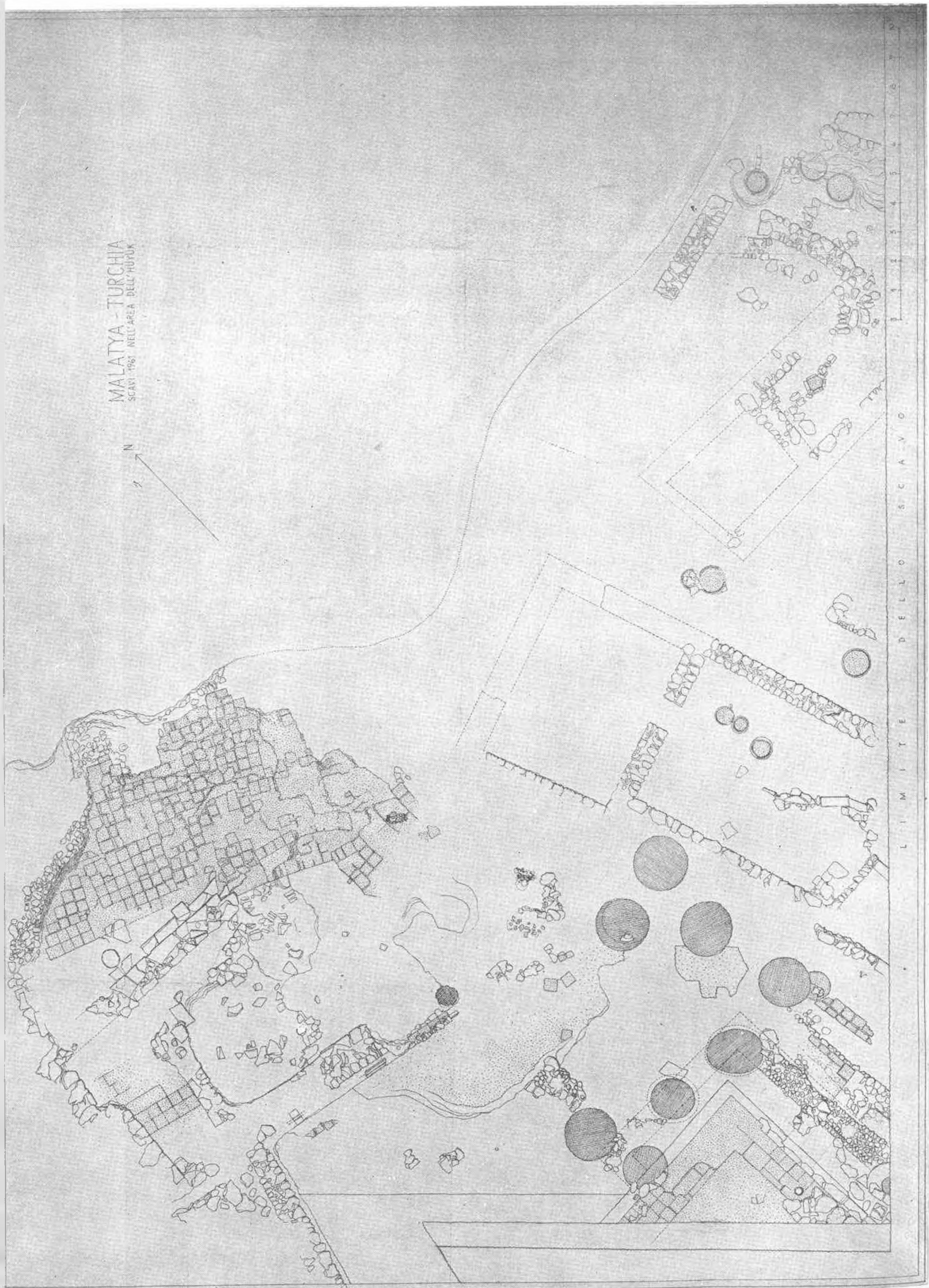
Fig. 12

MALATYA - TURCHIA
SCAVI 1963 NELL'AREA DELL'YHOUK

N

L I M I T E D E L L O S C A V O

Plan : I



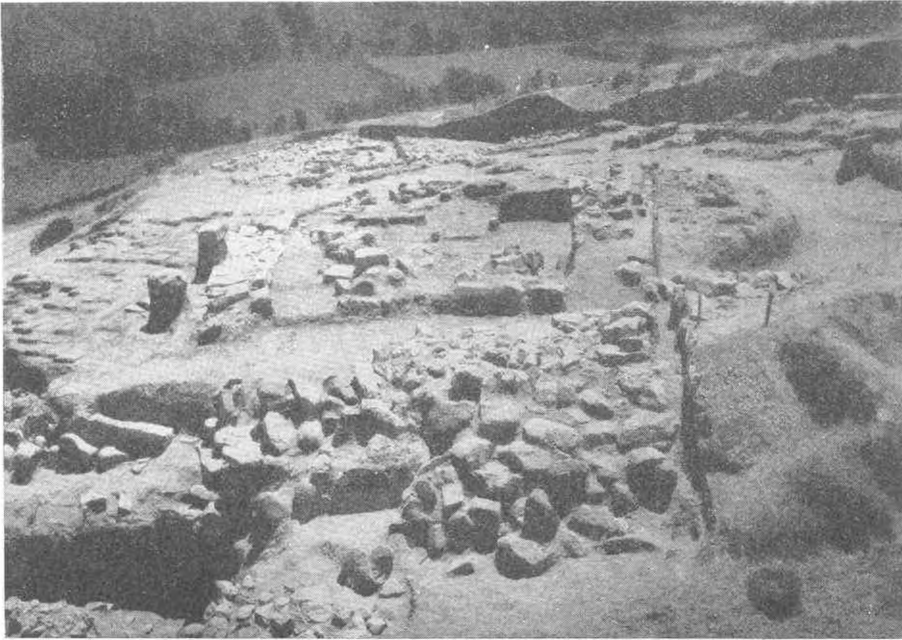


Fig. 1 — Arslan tepe (malatya) General View of the excavation Area.

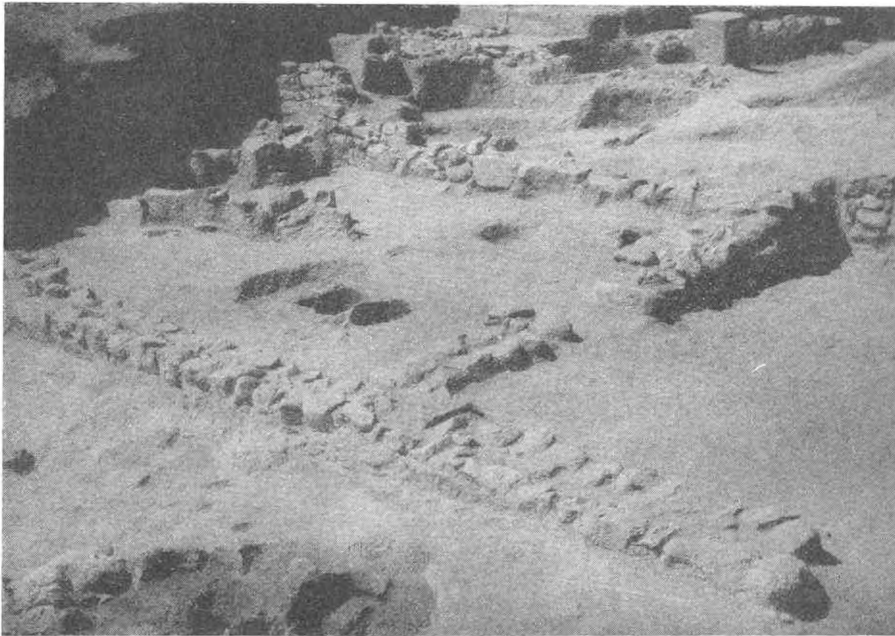


Fig. 2 — Arslantepe (Malatya) Buildings of the I. st. Archaeological Level

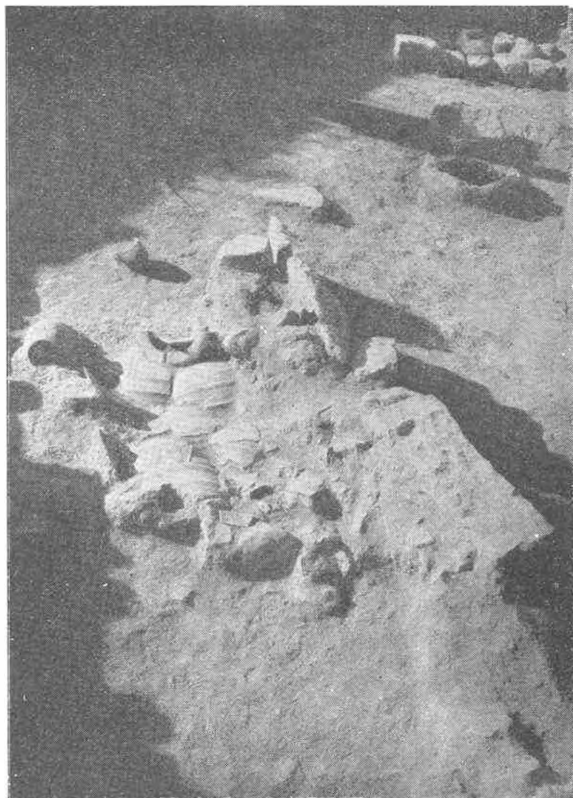


Fig. 3 — Arslantepe (Malatya) Storage jars on the Floor of a Roman - Byzantine house.

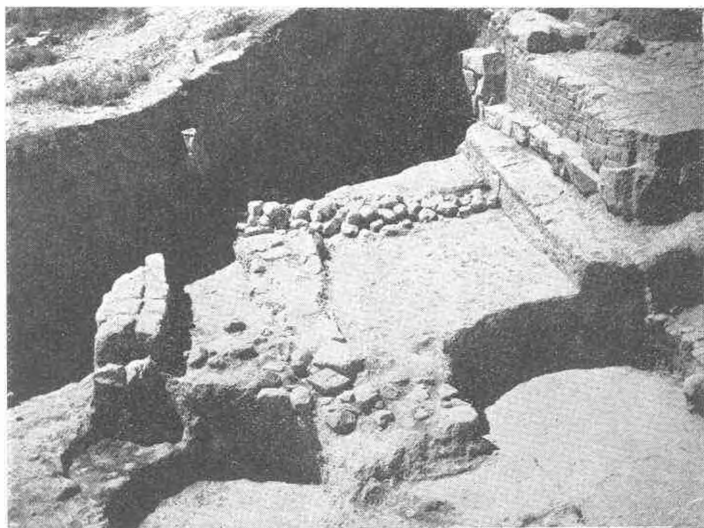


Fig. 4 — Arslantepe (Malatya) Buildings of the 2 nd. archaeological Level and remains of two silos.



Fig. 5 — Arslantepe (Malatya) the defense wall in the northern Side of the Hüyük.



Plate 1 — Foundations of a church to the north of Ayasofya.

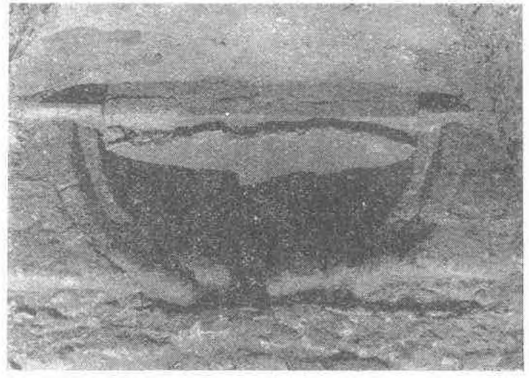


Plate 2 — Painted tomb on the South west side of Ayasofya.



Plate 3 — Narthex, South wall, mother praying to Christ.



Plate. 4 — Narthex, South Wall, boy possessed by Devils.



Plate 5 — Work in progress on the removal of plaster from the Cupola.

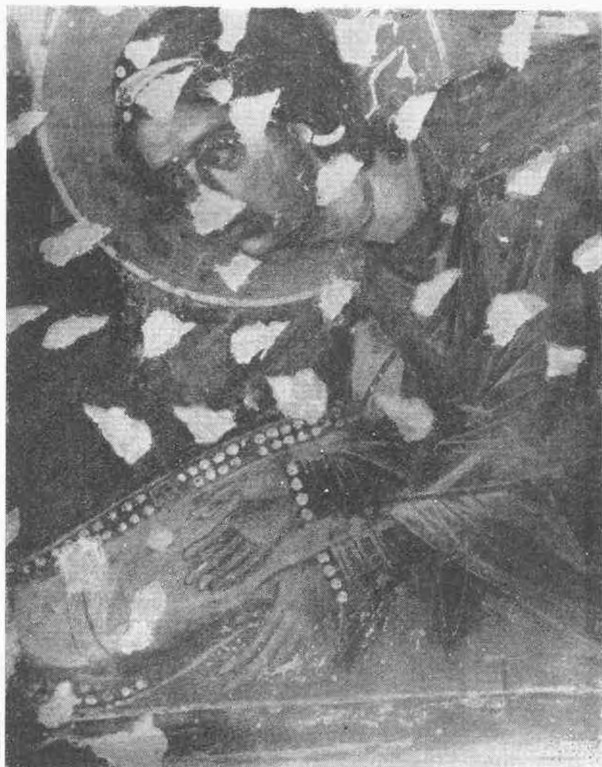


Plate 6 — Cupola. Detail of a head from the Frieze of angels.



Plate 7 — Exonarthex west wall. The Last Judgment. Detail of the Dead arising from their tombs.

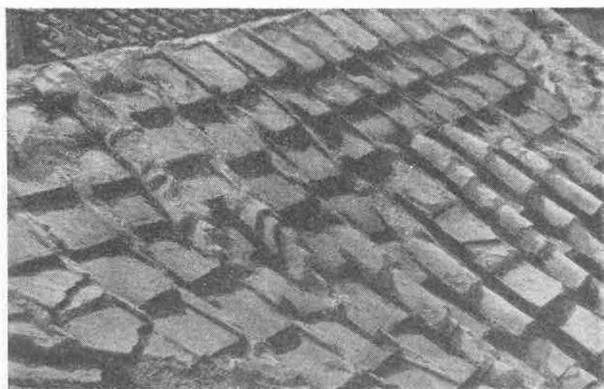


Plate 8 — Narthex. South west side. Original tiling of the roof.

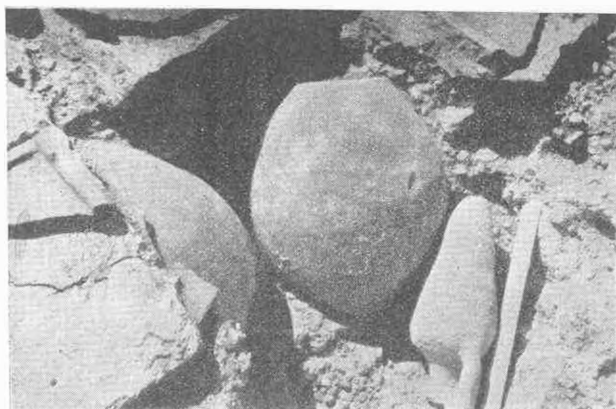


Plate 9 — Exonarthex. north side of roof. Jars and amphora inserted into the mortar.