

1:2000

M26 U 101

Fig. 1: Site plan of Sardis.



**Fig. 2: Lydian Architectural Terracotta Reconstruction Project:
electric kiln for firing tiles.**



Fig. 3: Lydian Architectural Terracotta Reconstruction Project:
preparation of master mold for raking sima.



Fig. 4: Lydian Architectural Terracotta Reconstruction Project: Hand finishing a mold-made raking sima.



Fig. 6: Urban Survey Project: deep drilling rig.

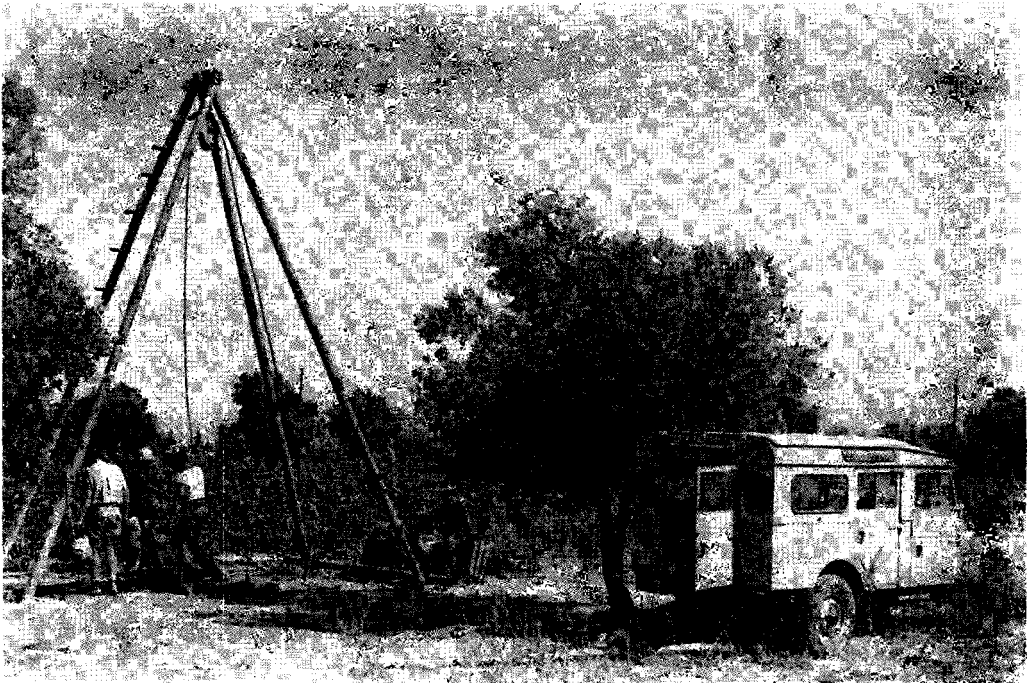


Fig. 5: Urban Survey Project: deep drilling rig.

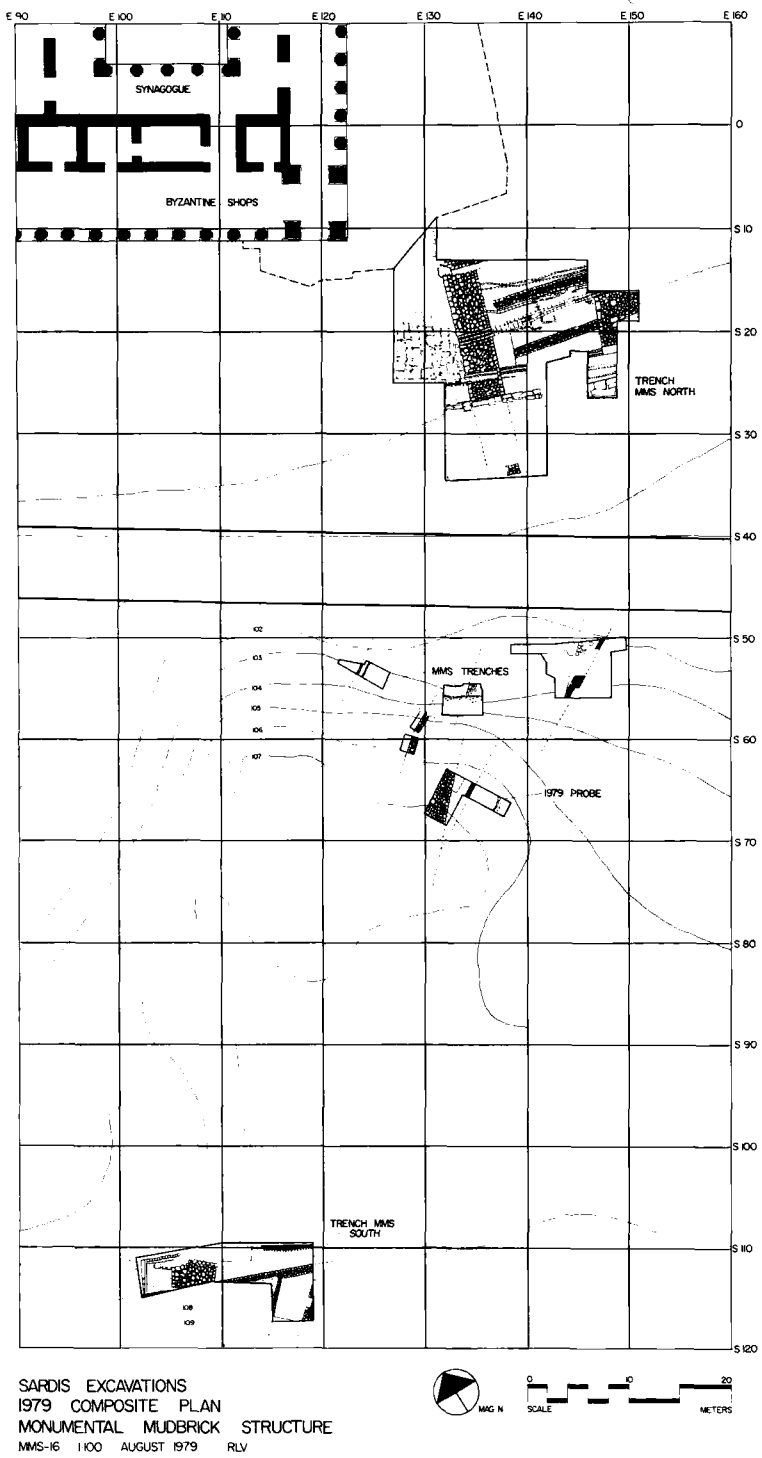


Fig. 7: Region of "colossal Lydian structure" with sectors MMS, MMS-N and MMS-S.



Fig. 8: Sector MMS : mud brick superstructure of "colossal Lydian structure" east face (looking southwest).

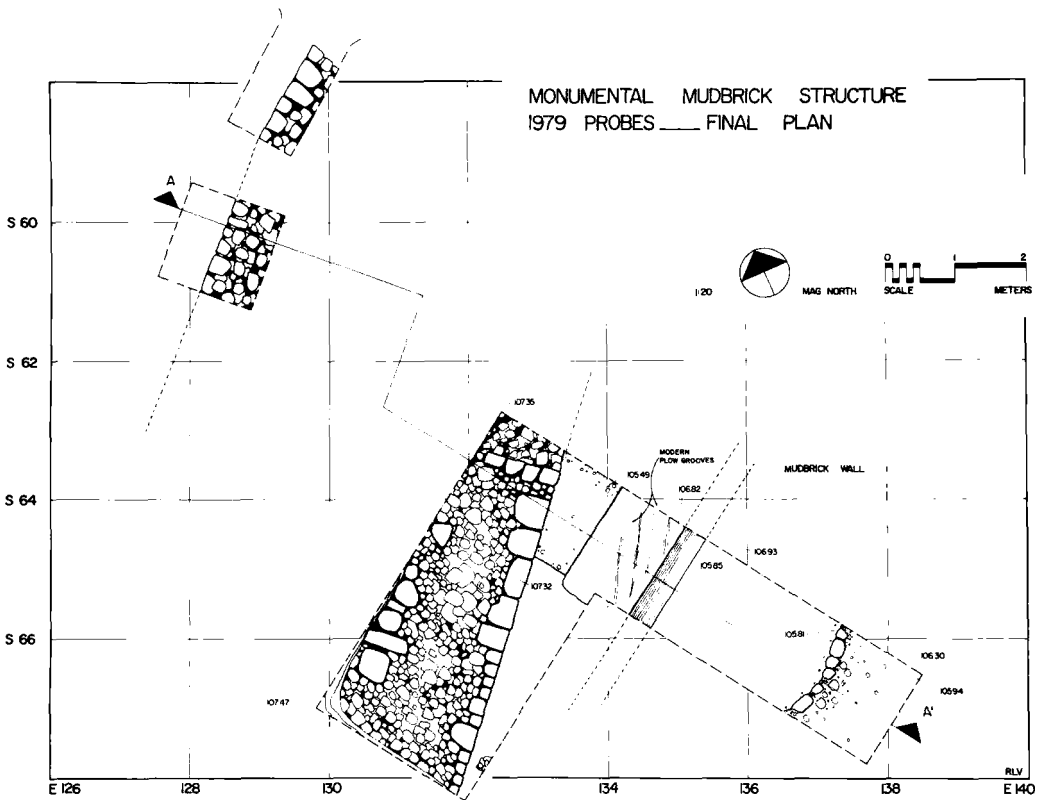


Fig. 9: Sector MMs: hillock sondages, plan.

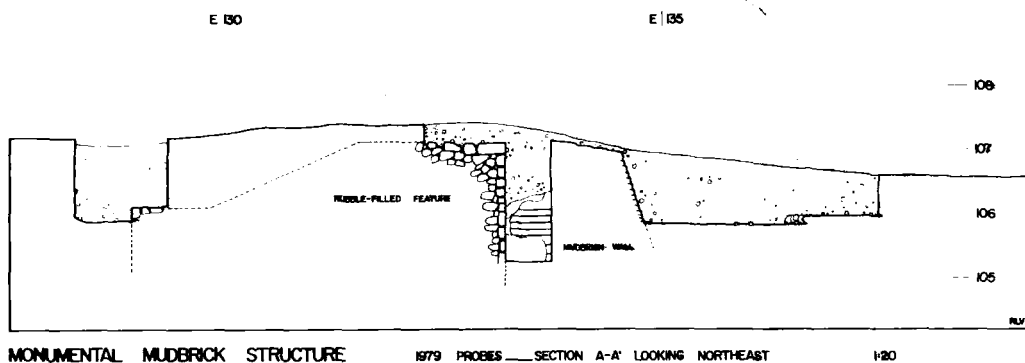


Fig. 10: Sector MMS: hillock sondages, section.

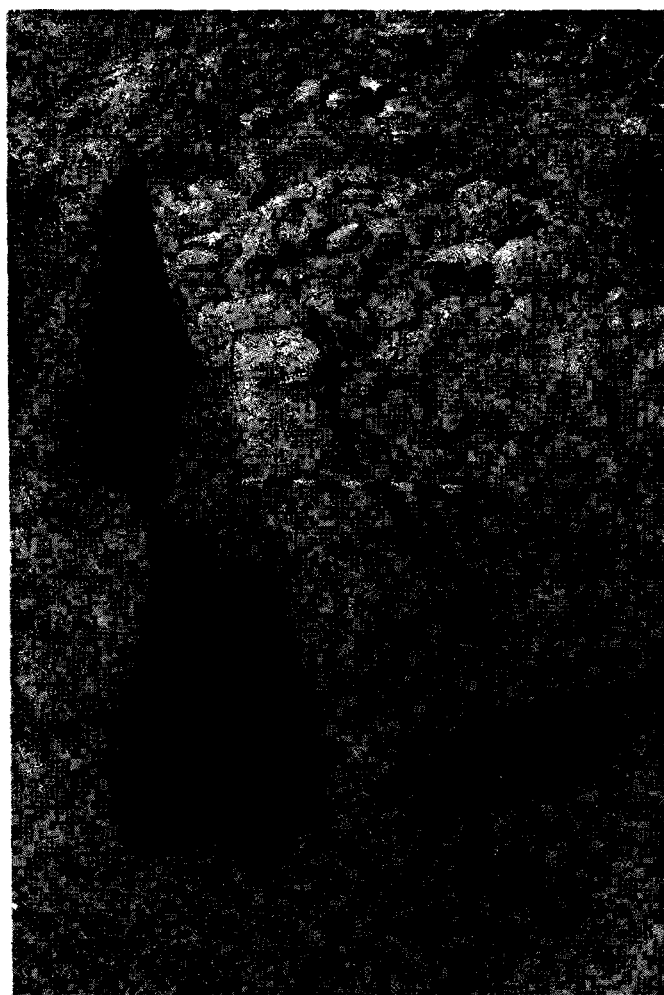


Fig. 11: Sector MMS: Stone building set in mud brick super structure of "colossal Lydian structure", east face.

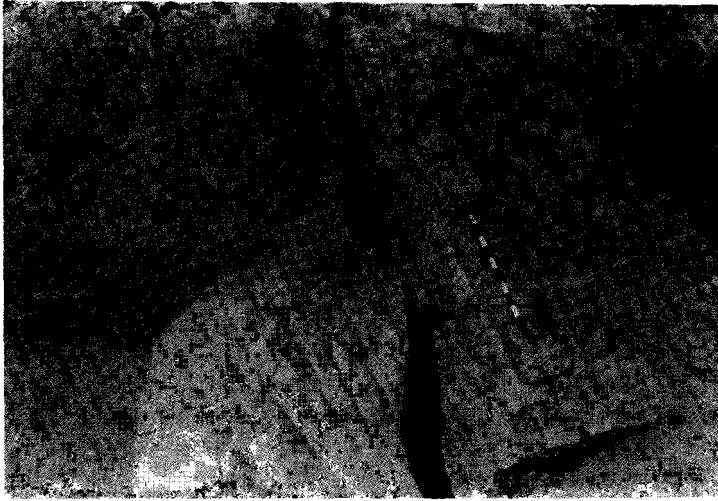
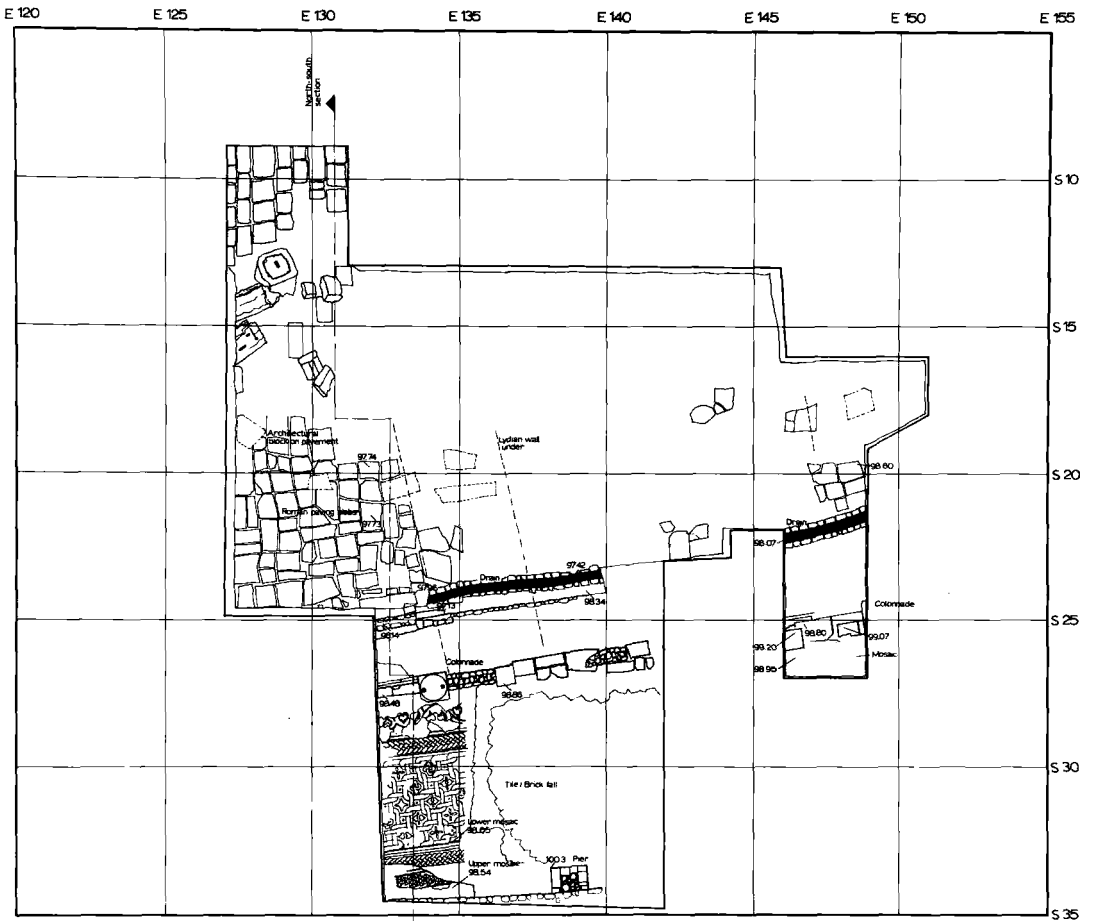


Fig. 12: Sector MMS: mud brick superstructure of "colossal Lydian structure" east face; and stone building set in mud brick super structure, east face.



TRENCH MMS / NORTH

PLAN OF ROAD PAVEMENT

MMS-11 AUGUST 1979 TS

Fig. 13: Sector MMS-N: Roman avenue remains, plan.

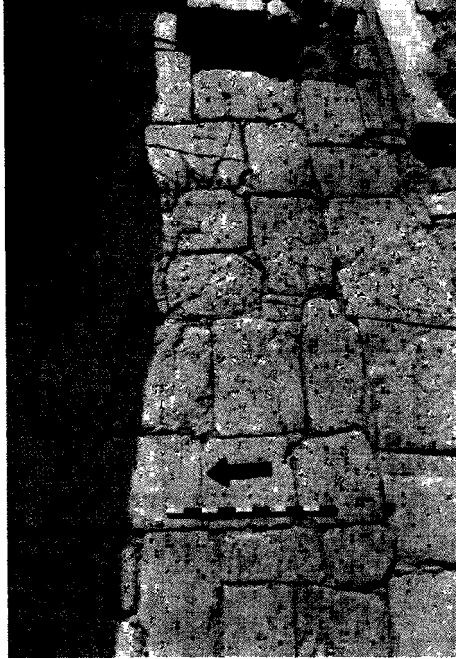
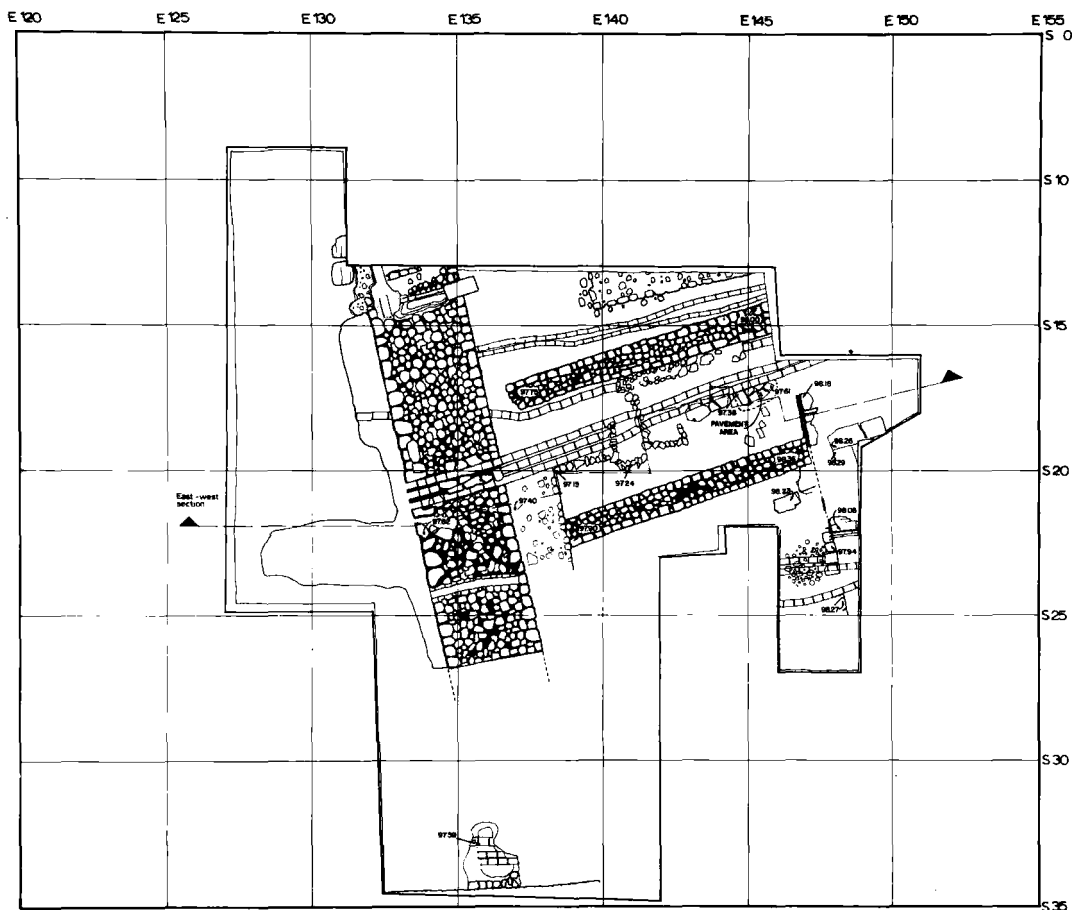


Fig. 14: Sector MMS-N: Roman Street paving.



Fig. 15: Sector MMS-N: Roman avenue, destruction debris in south ambulatory with inscribed marble cylinder, IN79.8.



TRENCH MMS / NORTH

PLAN OF SUB ROAD FEATURES
MMS-12 AUGUST 1979 1 50 TS

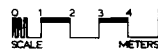


Fig. 16: Sector MMS-N: Remains below Roman avenue, plan.

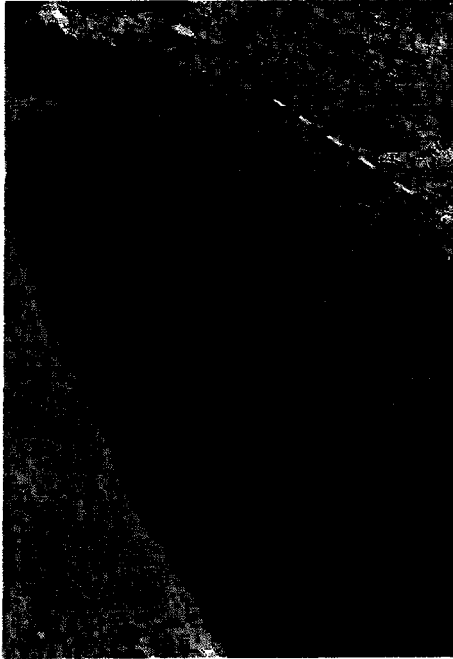


Fig. 17: Sector MMS-N: "Lydian West Wall" west face (looking northeast).



Fig. 18: Sector MMS-N: "Lydian West Wall" with overburden and later features; west face at far left, stone packing at upper left, southwest corner and south return at right (looking east, from above).

Levha XLIV

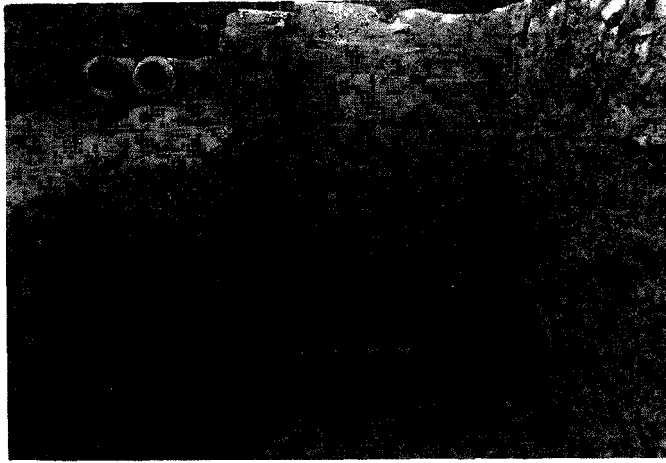
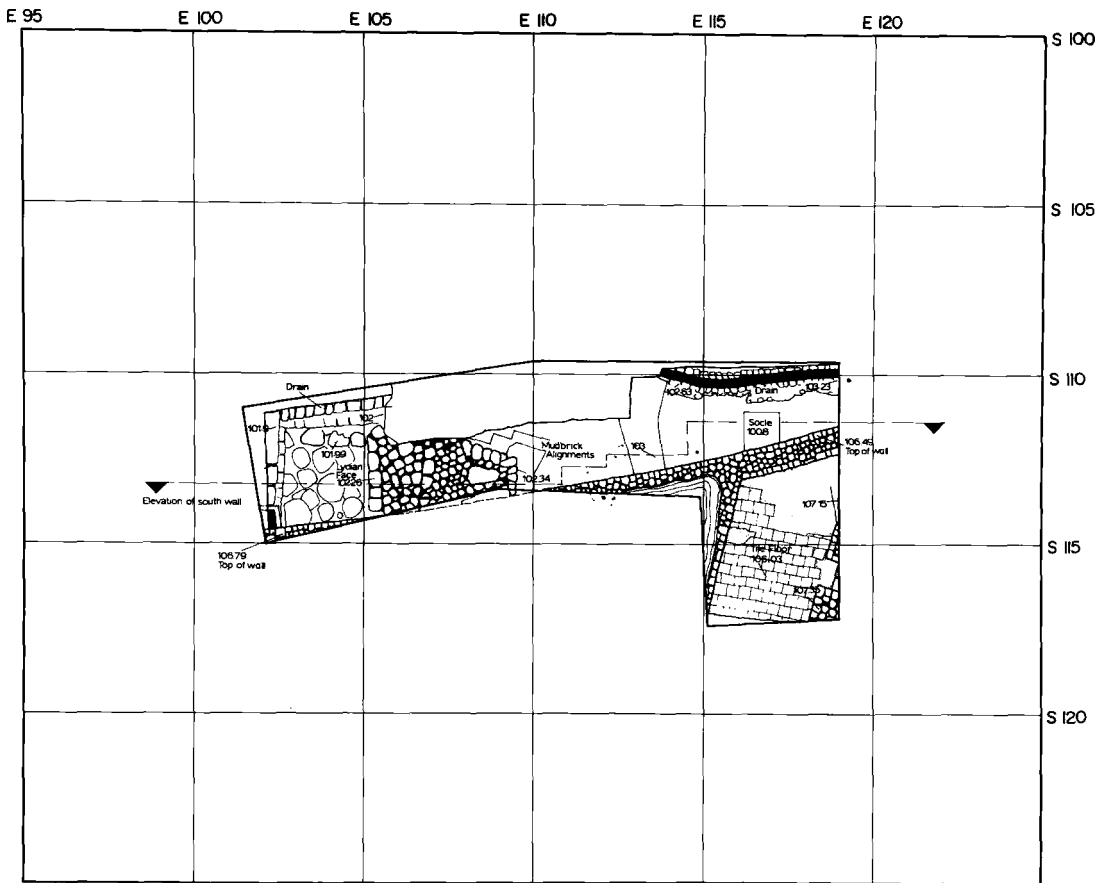


Fig. 19: Sector MMS-N: "Lydian East Wall" segment of west face. Roman conduit pipes at left; Roman or late Hellenistic foundation right (looking east).



TRENCH MMS SOUTH

PLAN OF 1979 EXCAVATIONS

MMS-18 AUGUST 1979 1:50 LV

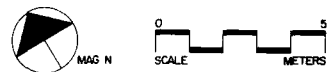


Fig. 20: Sector MMS-N: plan.

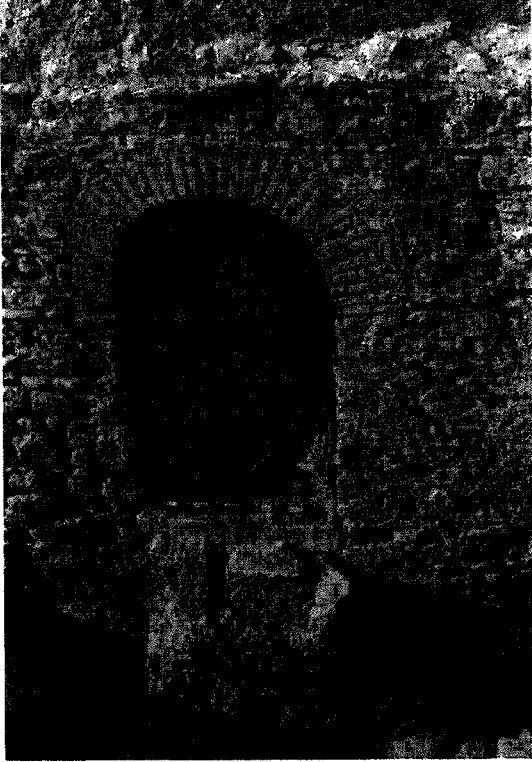


Fig. 21: Sector MMS-N: arched opening in Roman east-west wall, after consolidation and reconstruction (looking south).



Fig. 22: Sector MMS-N: bronze and glass brooch or fibula.

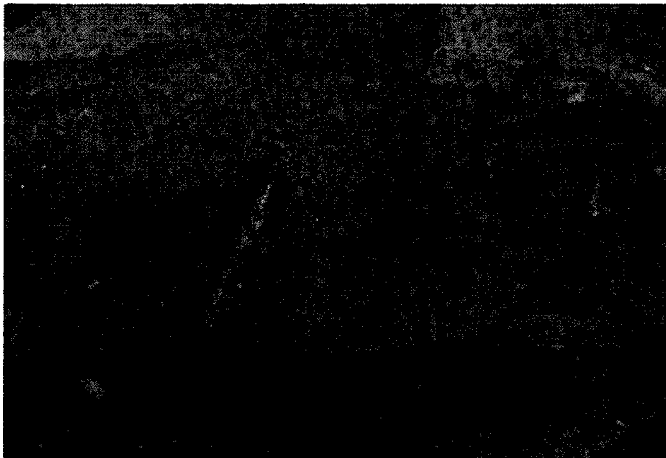


Fig. 23: Sector MMS-N: fibrous material and wood remains in mud brick superstructure of "colossal Lydian structure".

Levha XLVI



Fig. 24: Sector MMS-N: socle of "colossal Lydian structure" with west face.

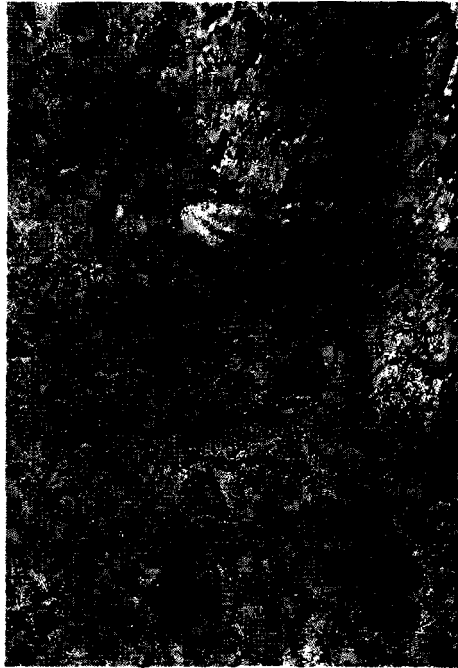


Fig. 25: Tomb 79.2 (Roman hypogaeum): Pointed bird on last wall near northeast corner.



Fig. 26: Tomb 79.2 (Roman hypogaeum): painted bird, basket of flowers or fruit, garland, and flowers on west wall.

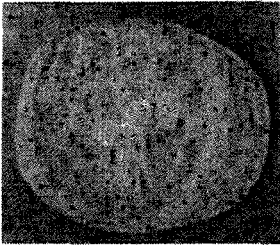


Fig. 29: Expedition Compound Excavation: glass inlay with intaglio figure of Artemis of Ephesos, GEM 79.1 / G79.8: 8476.

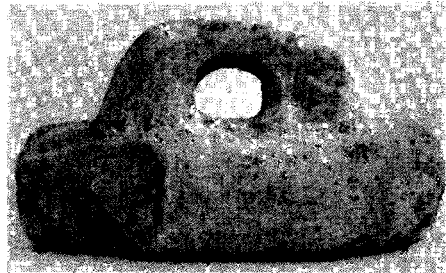


Fig. 27: Expedition Compound Excavation: marble plastering iron, S79.7: 8419.

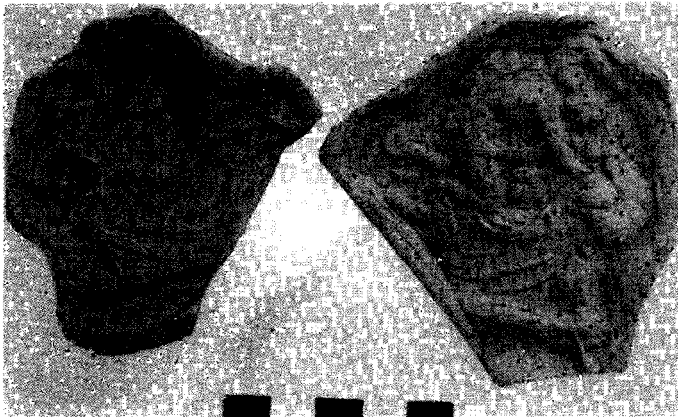


Fig. 28: Expedition Compound Excavation: bowl mold with erotic symplegma, P79.6: 8426.