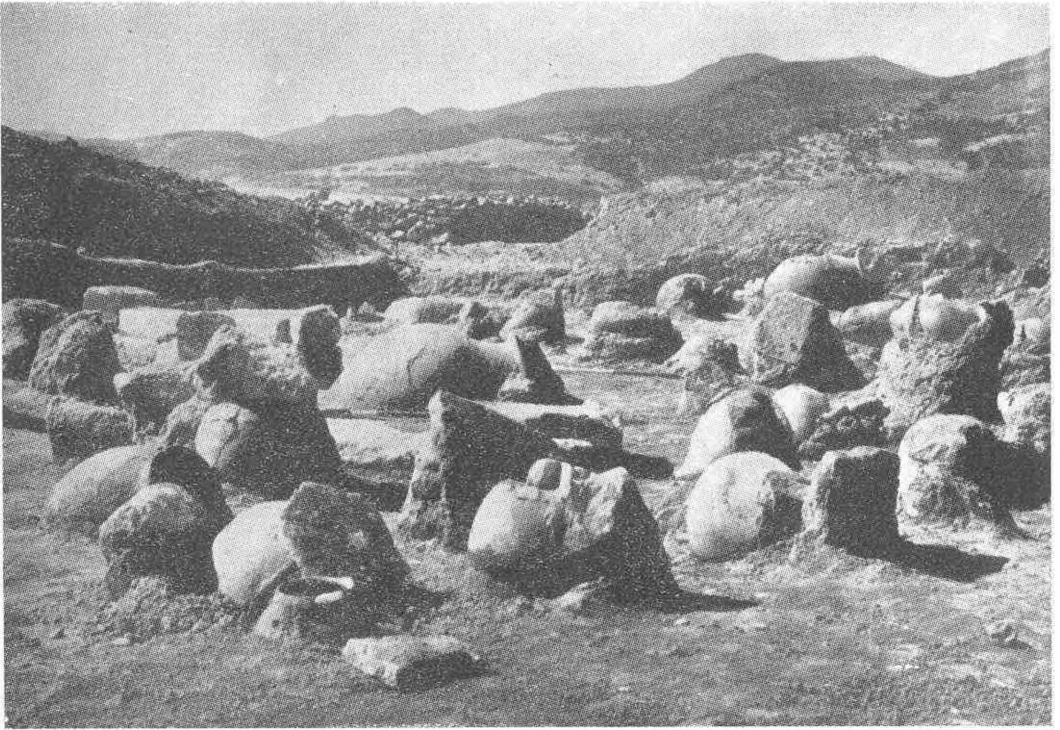


(Şekil: 1)



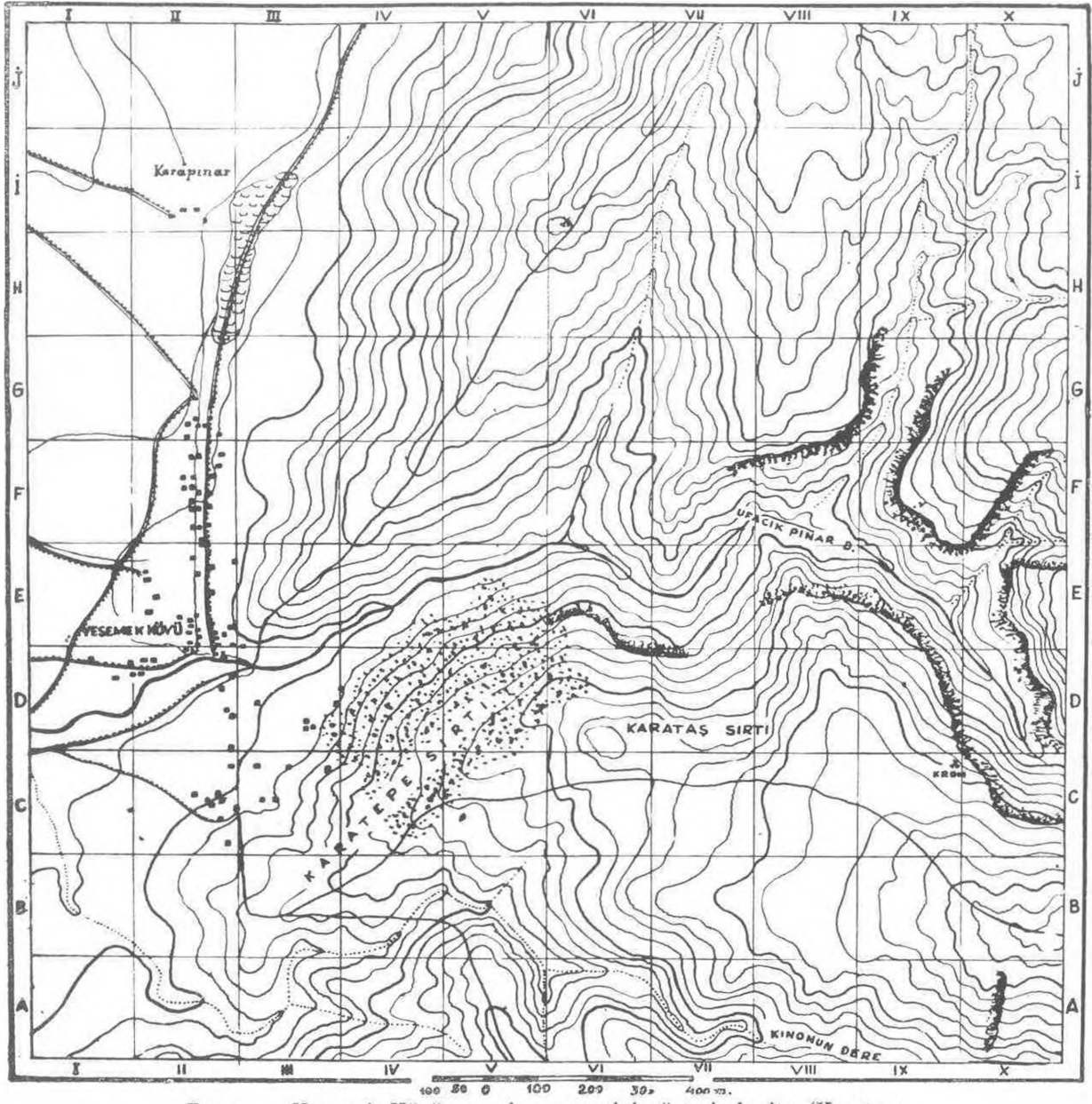
(Şekil: 2)



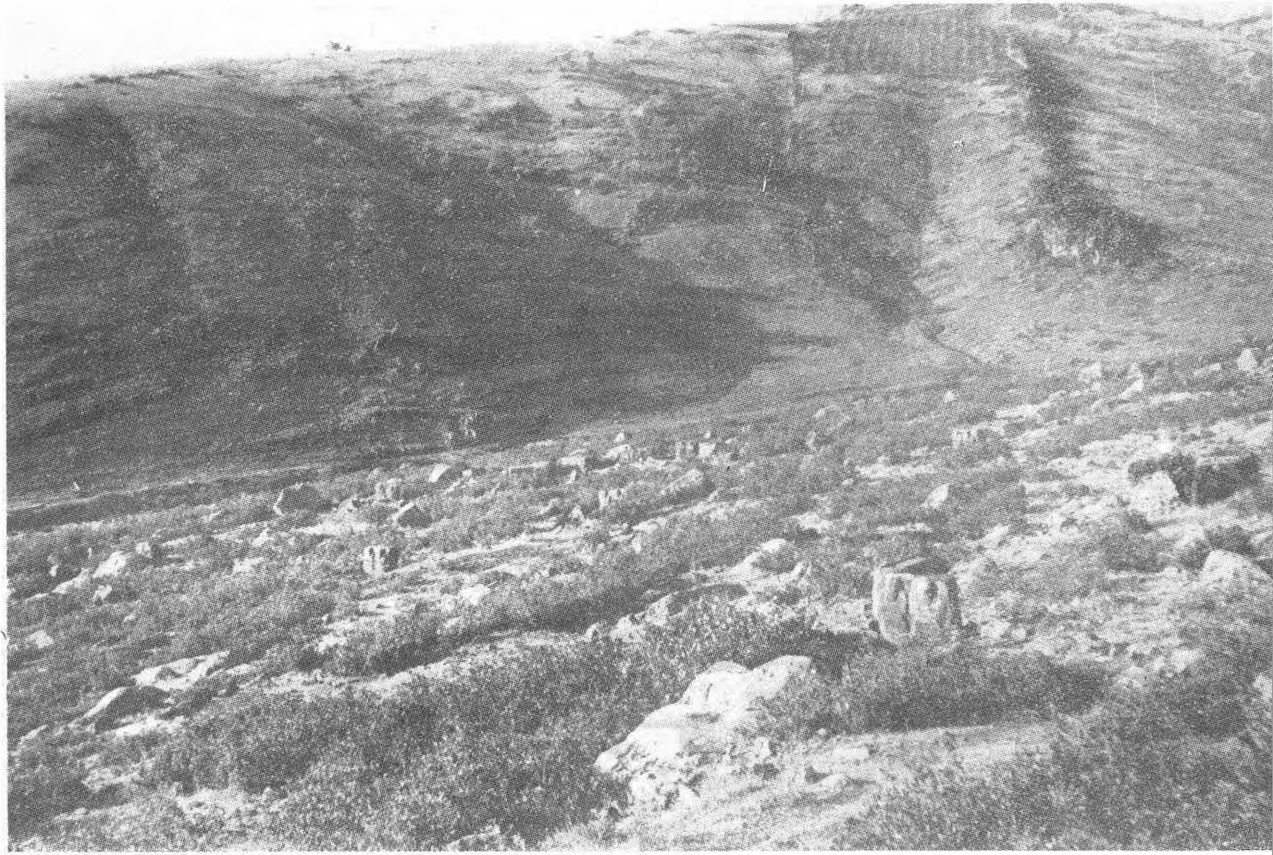
(Şekil: 3)



(Şekil: 4)



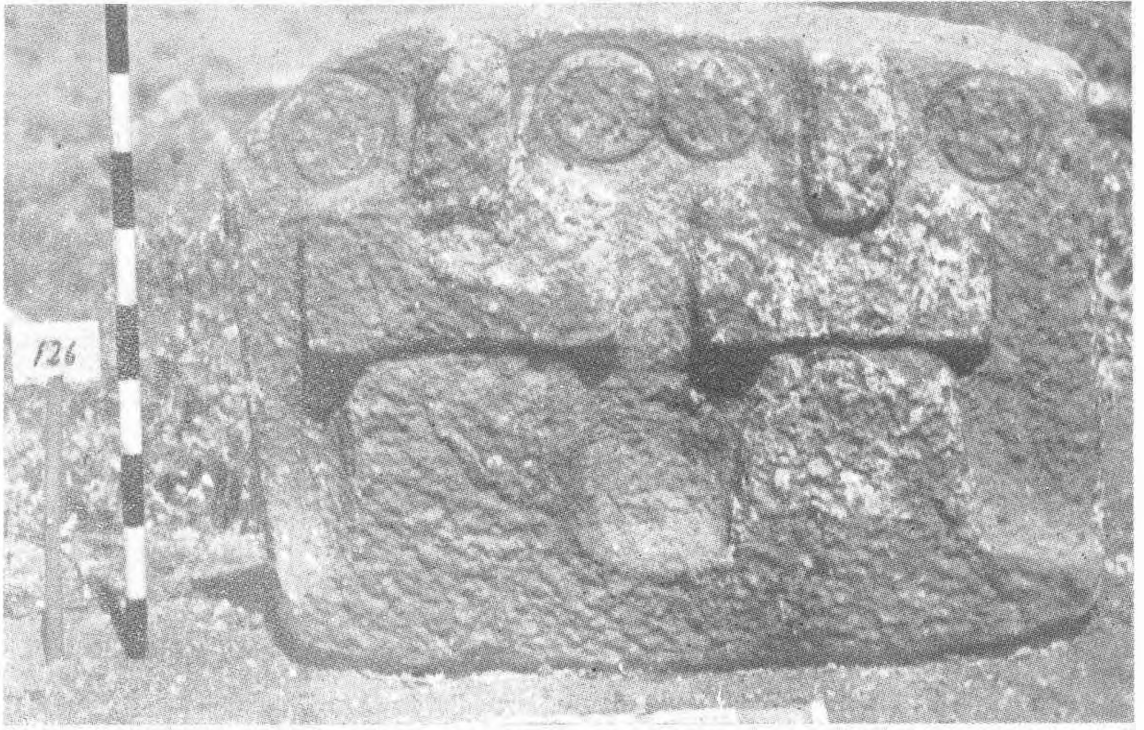
Res. 1 — Yesemek Köyü ve yakın çevresini gösterir harita (Karatepe sirtı üzerindeki noktalı kesim, taşocağının kapladığı alanı işaretlemektedir)



Res. 2 — Yesemek Taşocağı ve Heykel Atelyesinin batı kesiminin kuzeydoğudan görünüşü



Res. 3 — Yesemek Heykel Atelyesi: Ağır bir kapı-arşlanın ceraskal yardımı ile kaldırılıp dikilmesi



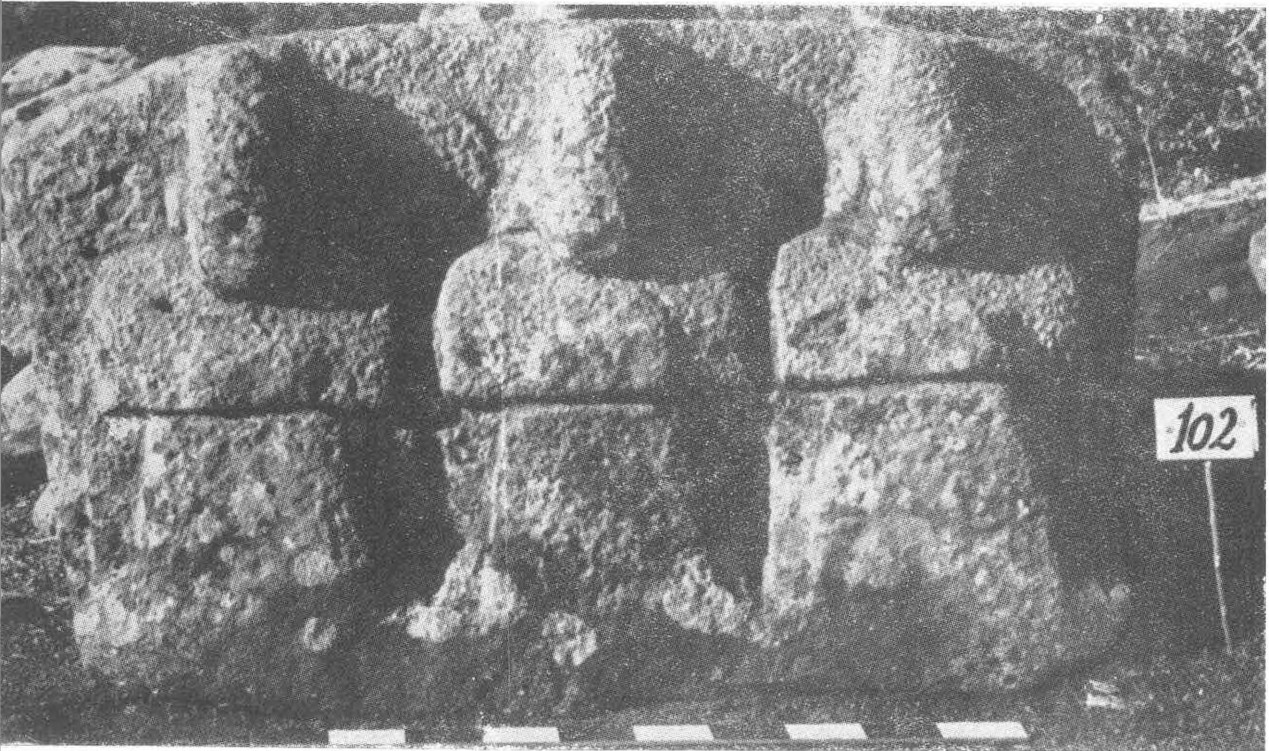
Res. 4 — Yesemek Heykel Atelyesi: İkili Dağ Tanrısı kabartması  
(1959 mevsiminde bulunmuştur.)



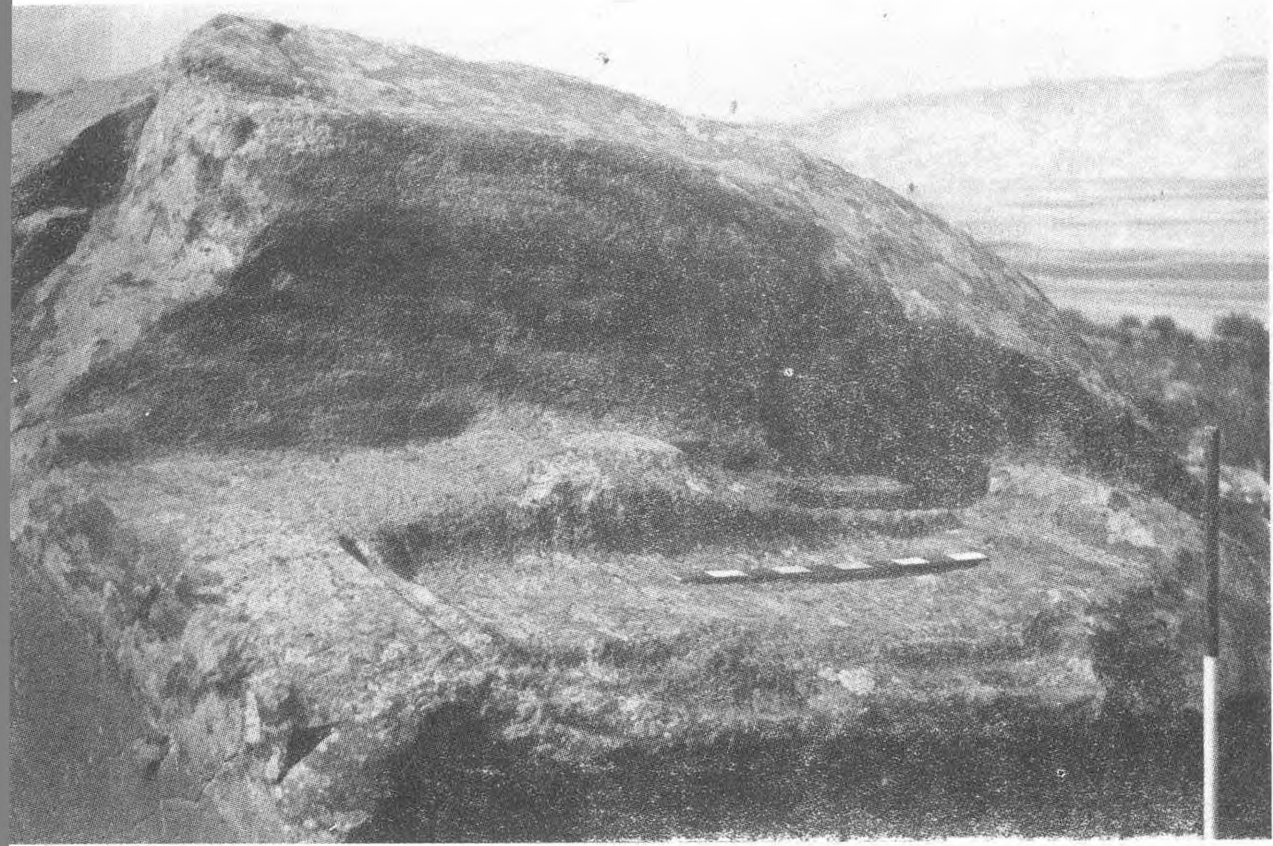
Res. 5 — Yesemek Heykel Atelyesi: İkili bir Dağ Tanrısı kabartması  
(1958 mevsiminde bulunmuştur.)



Res. 6 — Yesemek Heykel Atelyesi: İkili bir Dağ Tanrısı kabartması  
(1958 mevsiminde meydana çıkarılmıştır).



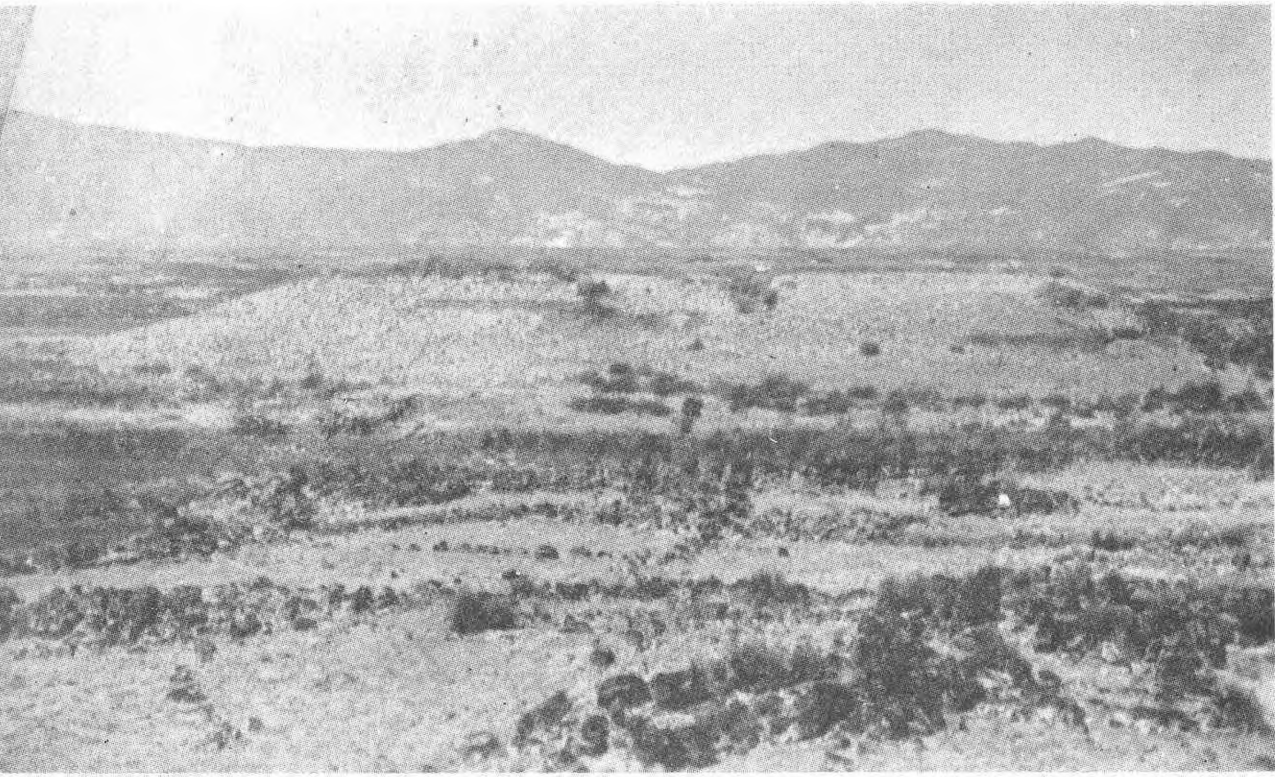
Res. 7 — Yesemek Heykel Atelyesi: Üçlü bir Dağ Tanrısı kabartması  
(1955'de bulunmuştur).



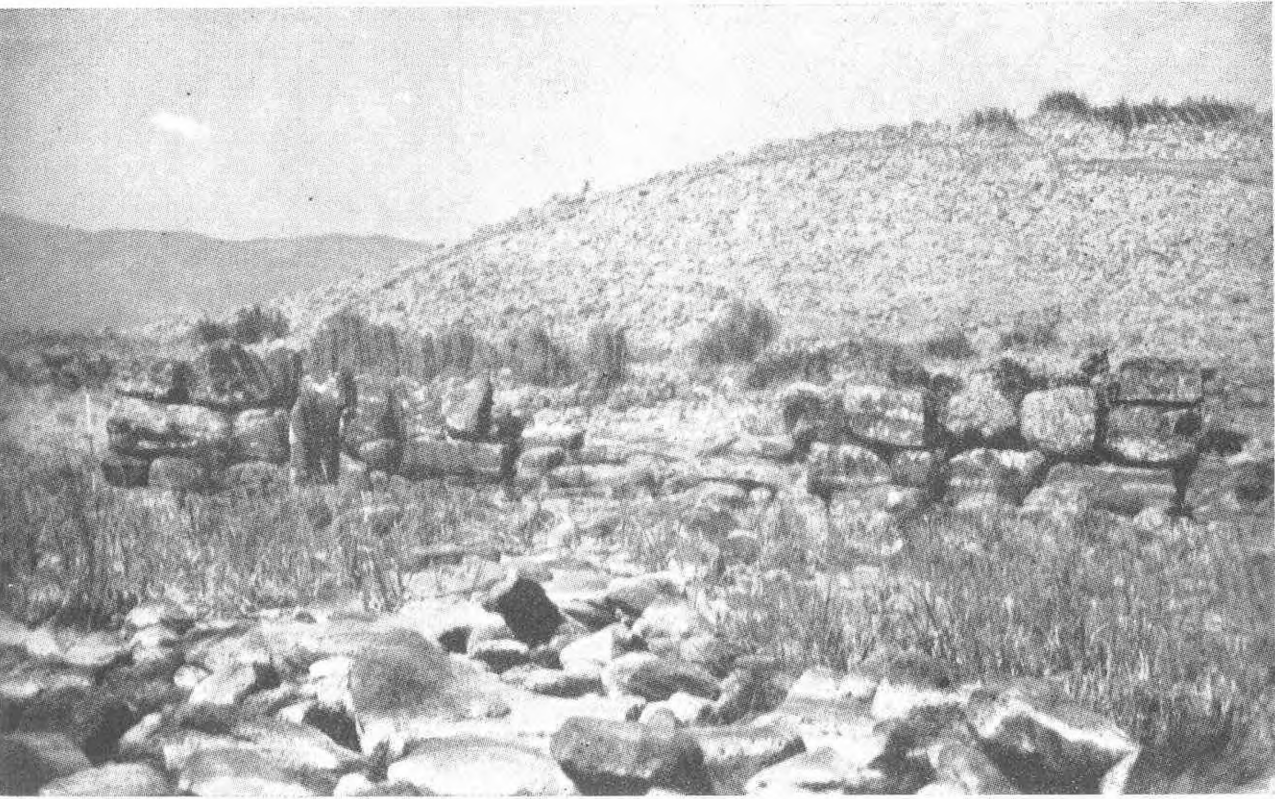
Res. 8 — Yesemek Taşocağı: Dörtgen prizması şeklindeki blokların bazalt kayalarının birinden nasıl çıkartıldığını tesbit ettiren ve takriben  $3,5 \times 4 \times 6$  m. boyutunda olan tabii bir sivrinti (Geride Yesemek köyü ve Altıntop Ovası.)



Res. 9 — Yesemek Taşocağı: Taş çıkarma işinin son safhasını teşkil eden dikdörtgen prizması şeklindeki bir bazalt bloku (blokun yontulması bitirilmemiştir.)



Res. 10 — Tilmen Hüyüğünün batıdan görünüşü (Geride Amanus Dağları )



Res. 11 — Tilmen Hüyüğü: Doğu dış-sûr kapısının batıdan görünüşü (Önde, doğrultulmuş kapı-arslanı parçası görülmektedir )



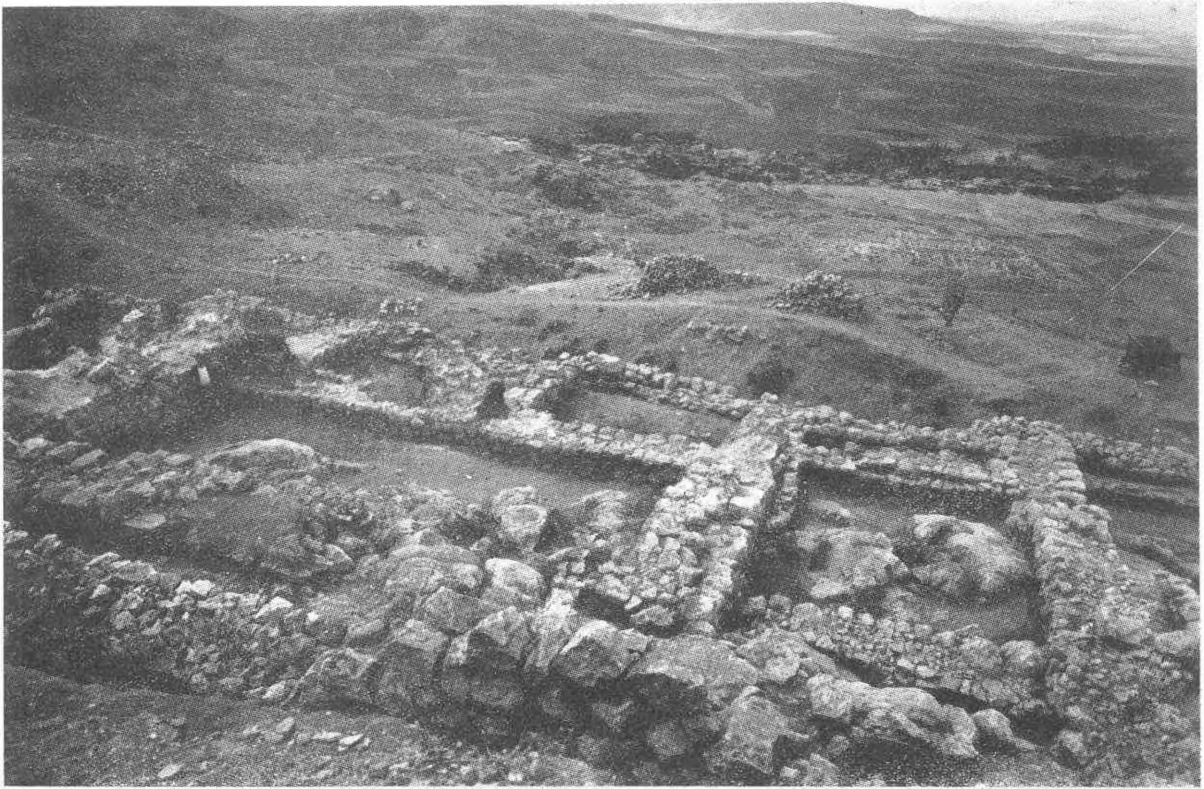


Abb. 1 — Boğazköy - Büyükkale. Gebäude E, vom Burginnern her gesehen.



Abb. 2 — Boğazköy. Südostecke von Büyükkale mit Südbastion und Gebäude K.



Abb. 3 — Boğazköy. Tiefgrabung im Südwesten von Büyükkale.

- A — Hethitische Burgmauer
- B — Strasse
- C — Hallenkonstruktion der Grossreichszeit
- D — Gebäude der Schicht IV b
- E — Grossteiniges Gebäude
- F — Lehmziegelgebäude
- G — Verbranntes Haus der Schicht IV c
- H — Verbranntes Gebäude der Schicht IV d



Abb. 4 — Boğazköy. Löwenplastik aus Terrakotta



Fig. 1 — Cavea of Theatre



Fig. 2 — Fragmentary Draped Statue

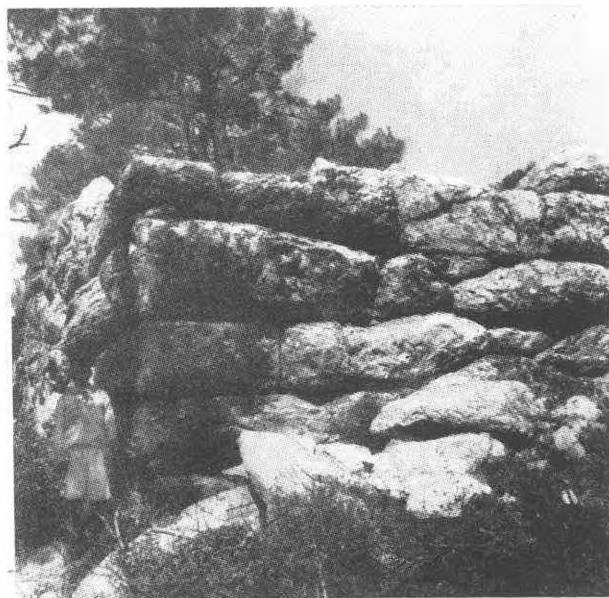


Fig. 3 — Retaining Wall of Temple Terrace

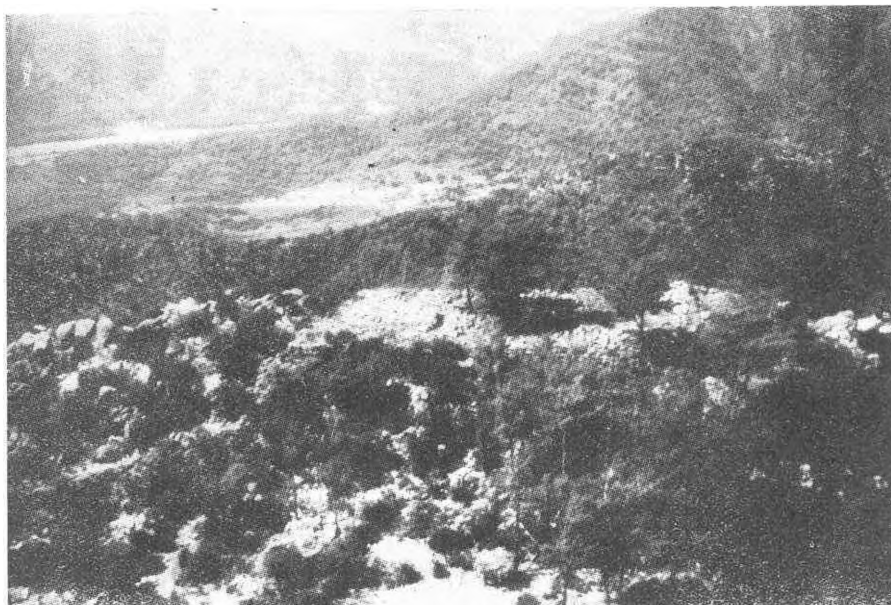


Fig. 4 — View of Temple Terrace from South

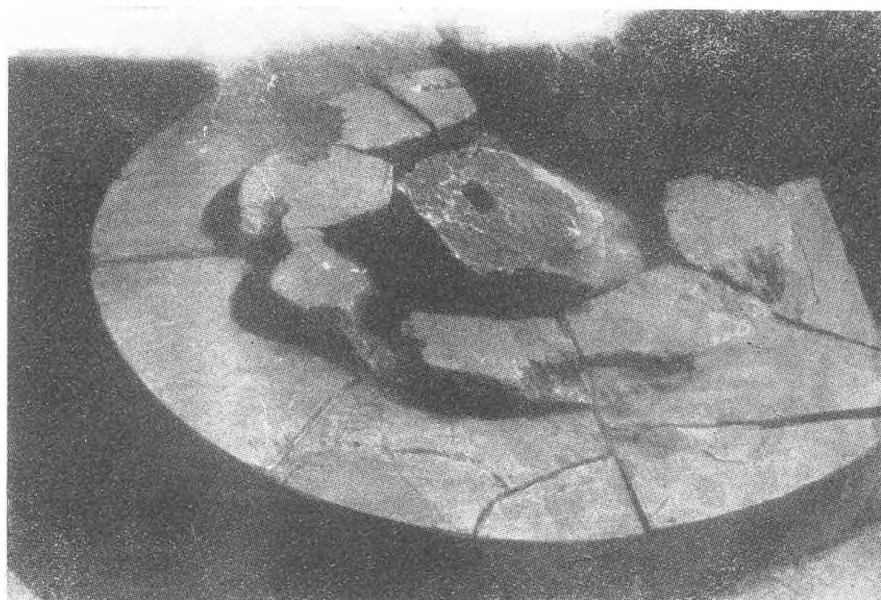


Fig. 5 — Circular Base in Pronaos



Fig. 6 — Corinthian Capital from Temple

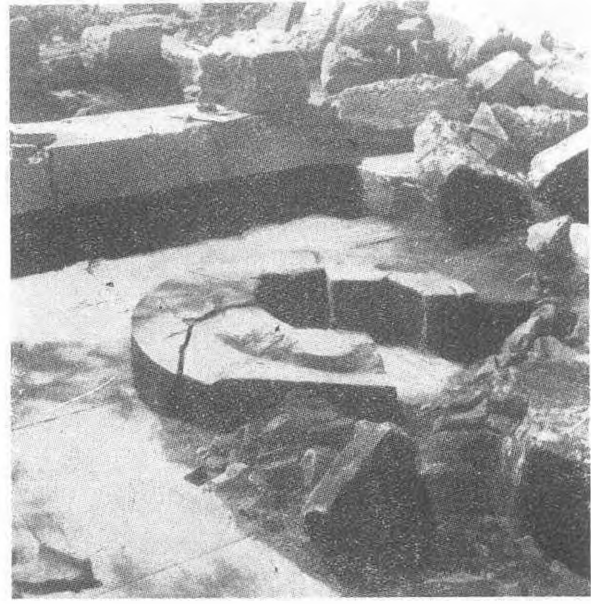


Fig. 7 — Pronaos from South-east



Fig. 8 — Krepis of Temple



Fig. 9 — Theatre from Temple Terrace



Photo: 1 — Le dépôt - de Xanthos



Photo: 2 — Le dépôt - musée

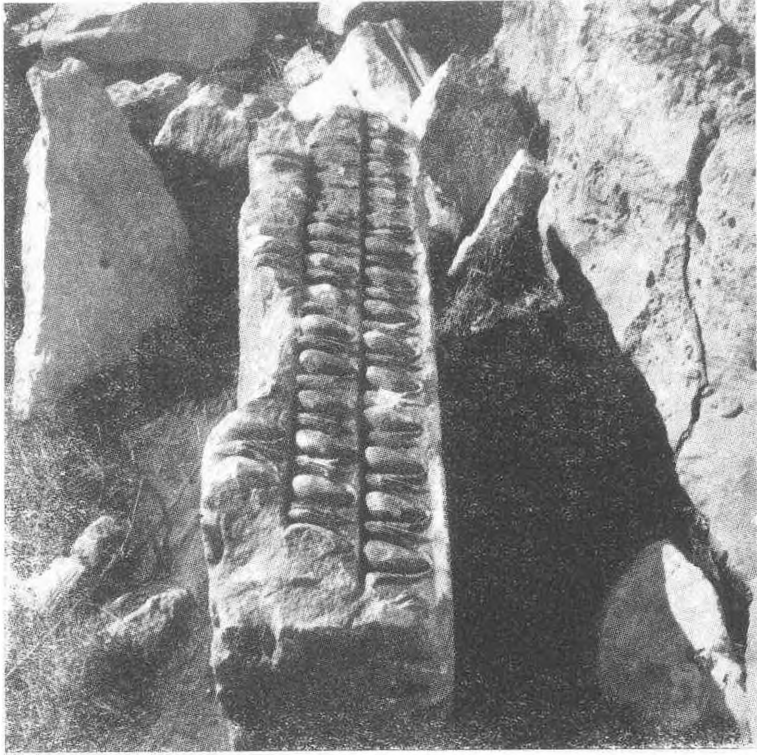


Photo: 3 — La frise de la porte de la cella

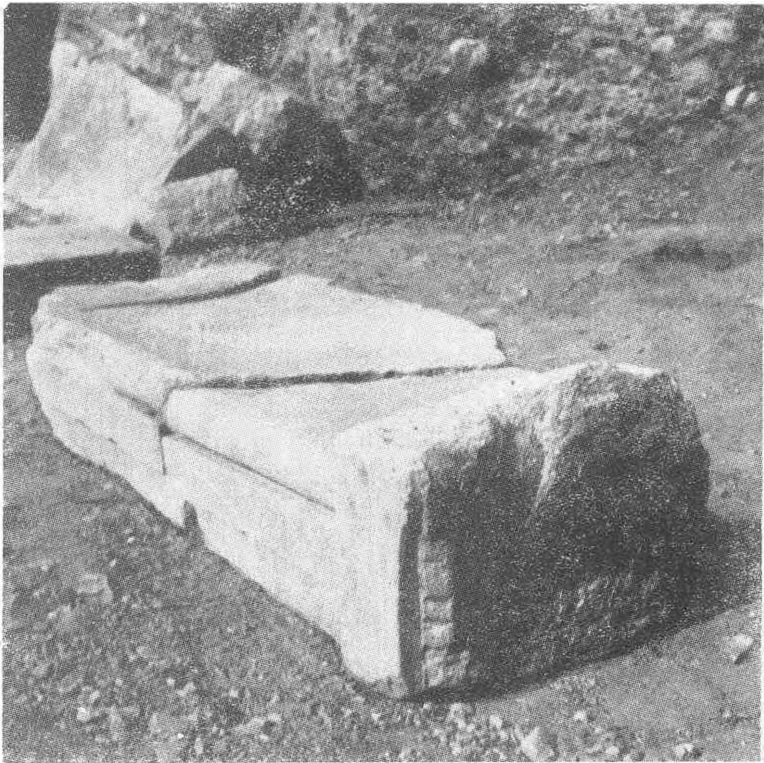


Photo: 4 — Lit funéraire du monument des Néréides

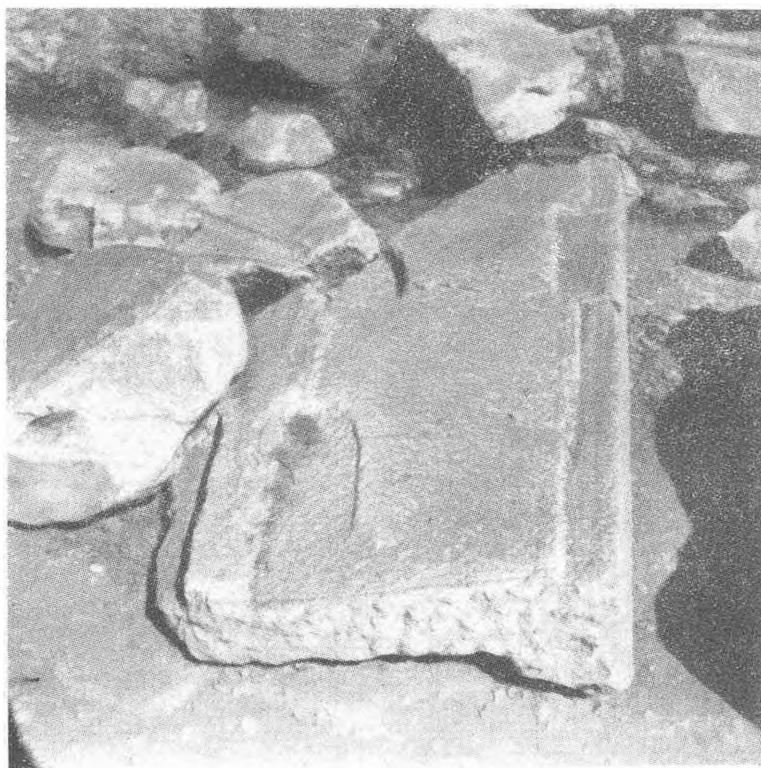


Photo: 5 — Dalle appartenant peut-être à une rampe  
d'accès au monument des Néréides

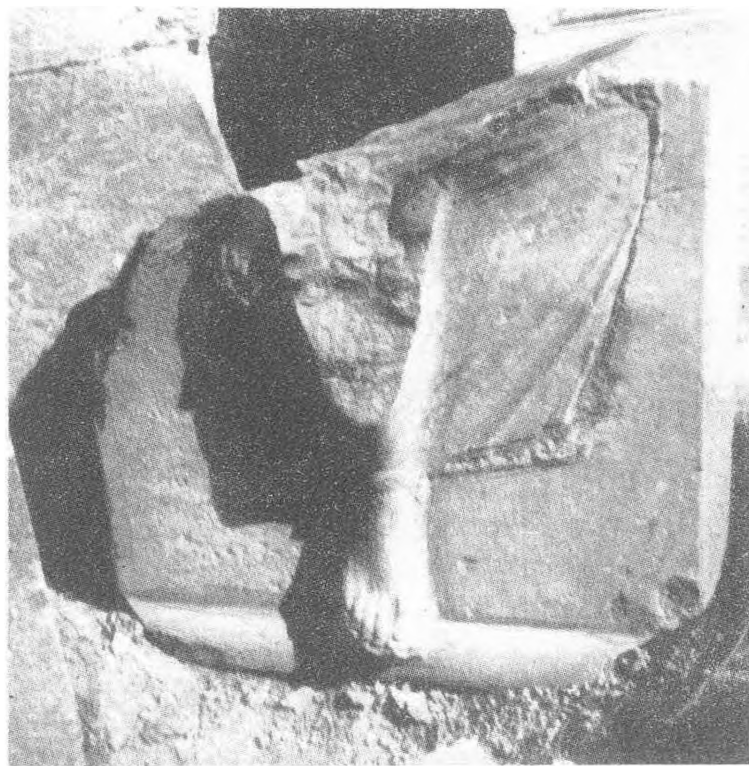


Photo: 6 — Fragment de couvercle de sarcophage  
(Herôon romain)





Photo: 7 — Abside de la basilique de l'Est à Xanthos

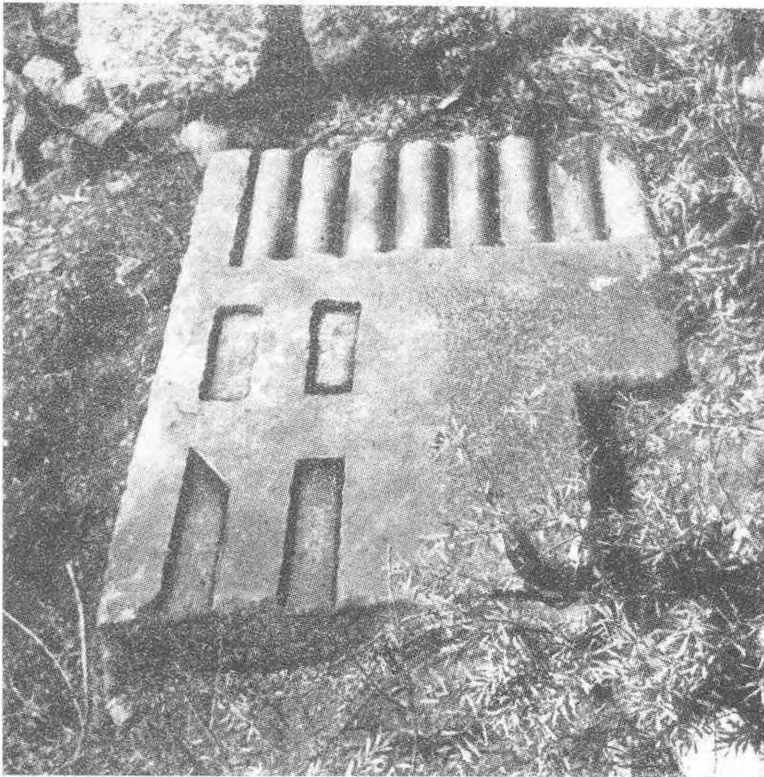


Photo: 8 — Fragment du monument lycien

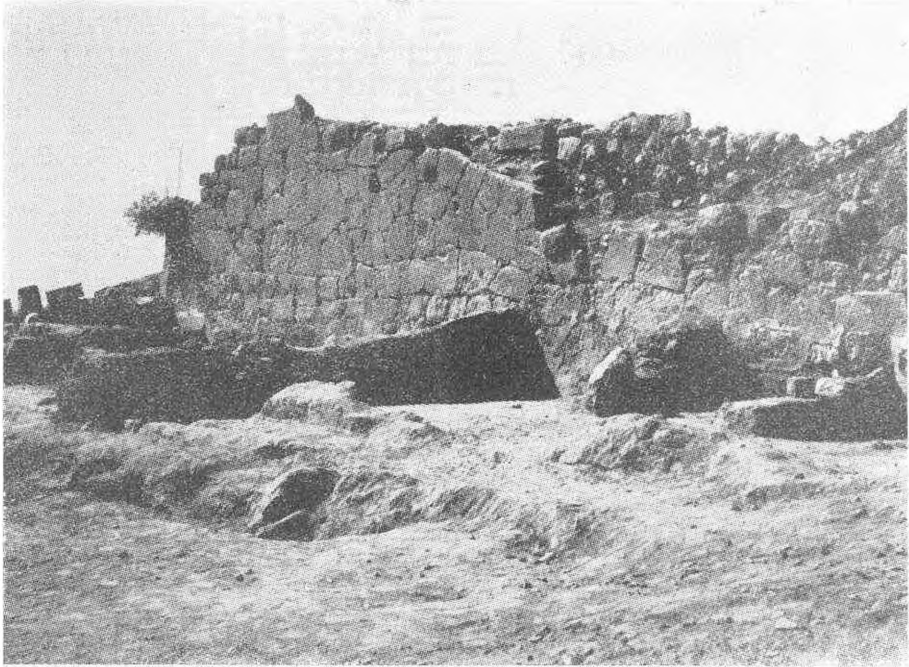


Photo: 9 Extrémité Sud de l'enceinte Est de l'acropole lycienne



Photo: 10 — Moitié Ouest de l'édifice rectangulaire et au second plan cella d'Artémis vue du Nord-Ouest. L'acropole Lycienne



Photo: 11 — Xanthos. Le Monument des Harpyies restauré

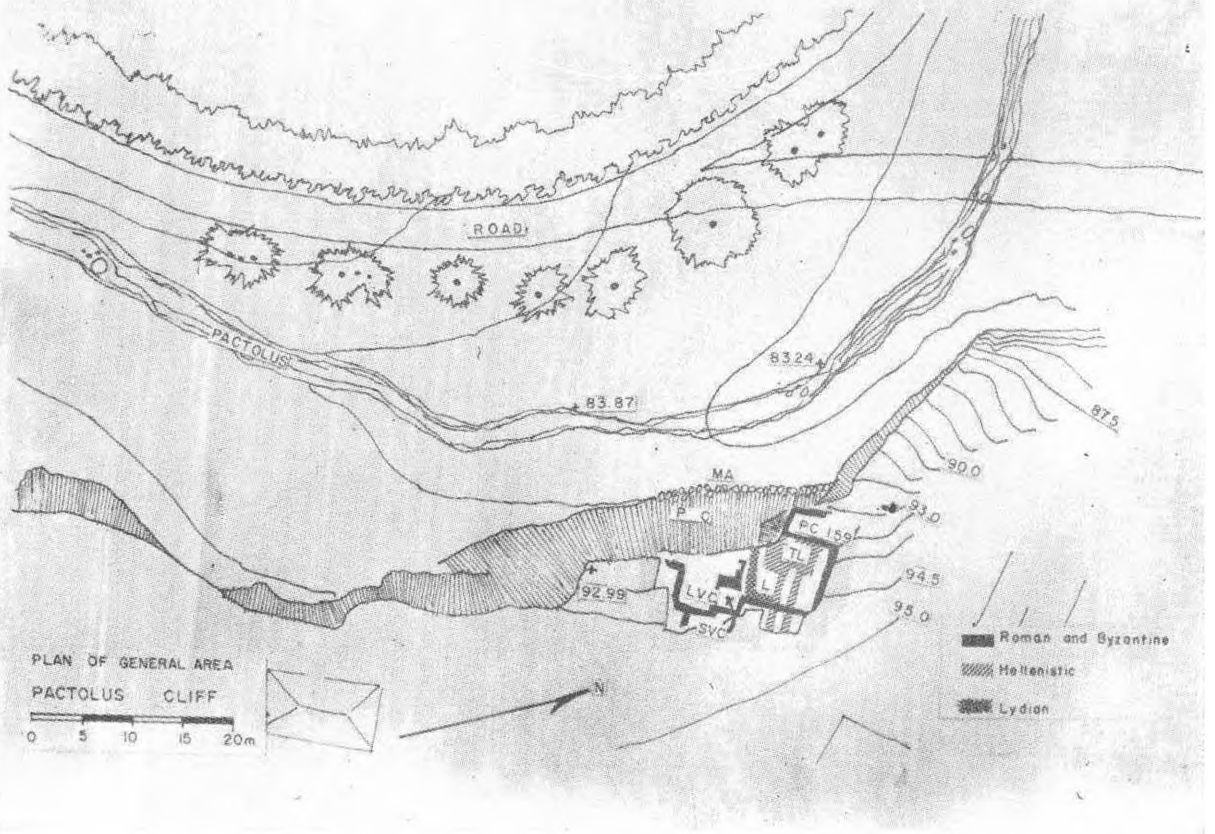


Fig. 1 — Plan of General Area, Pactolus Cliff.

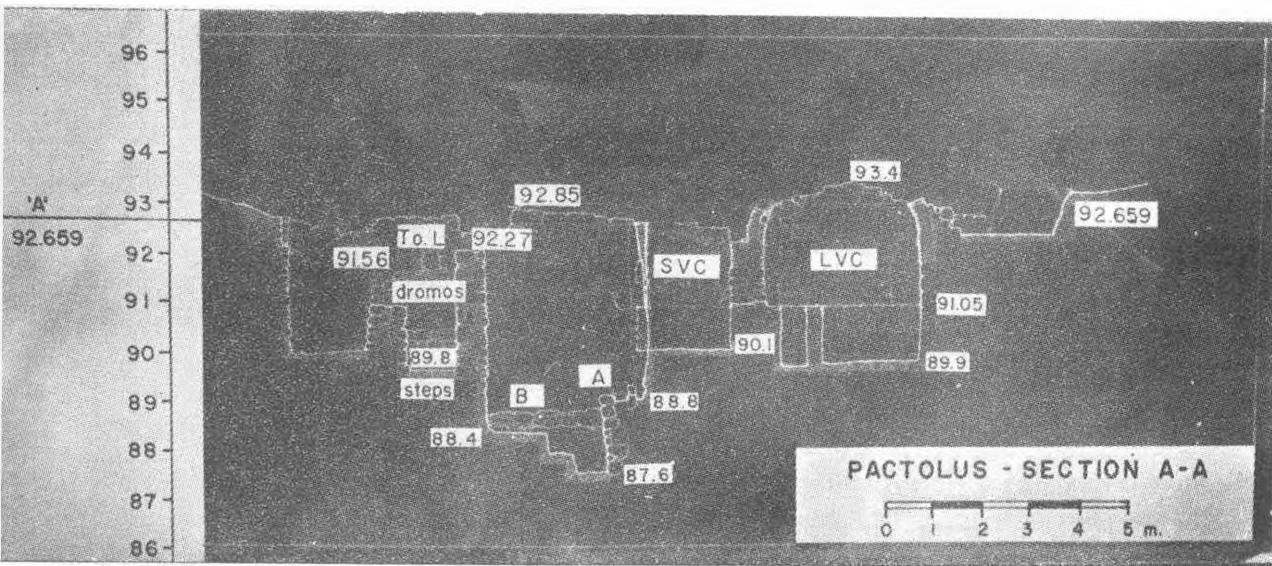


Fig. 2 — Pactolus. Section A - A through Tomb of Lintel, Lydian Walls B, A, and Roman Mausolea SVC and LVC.

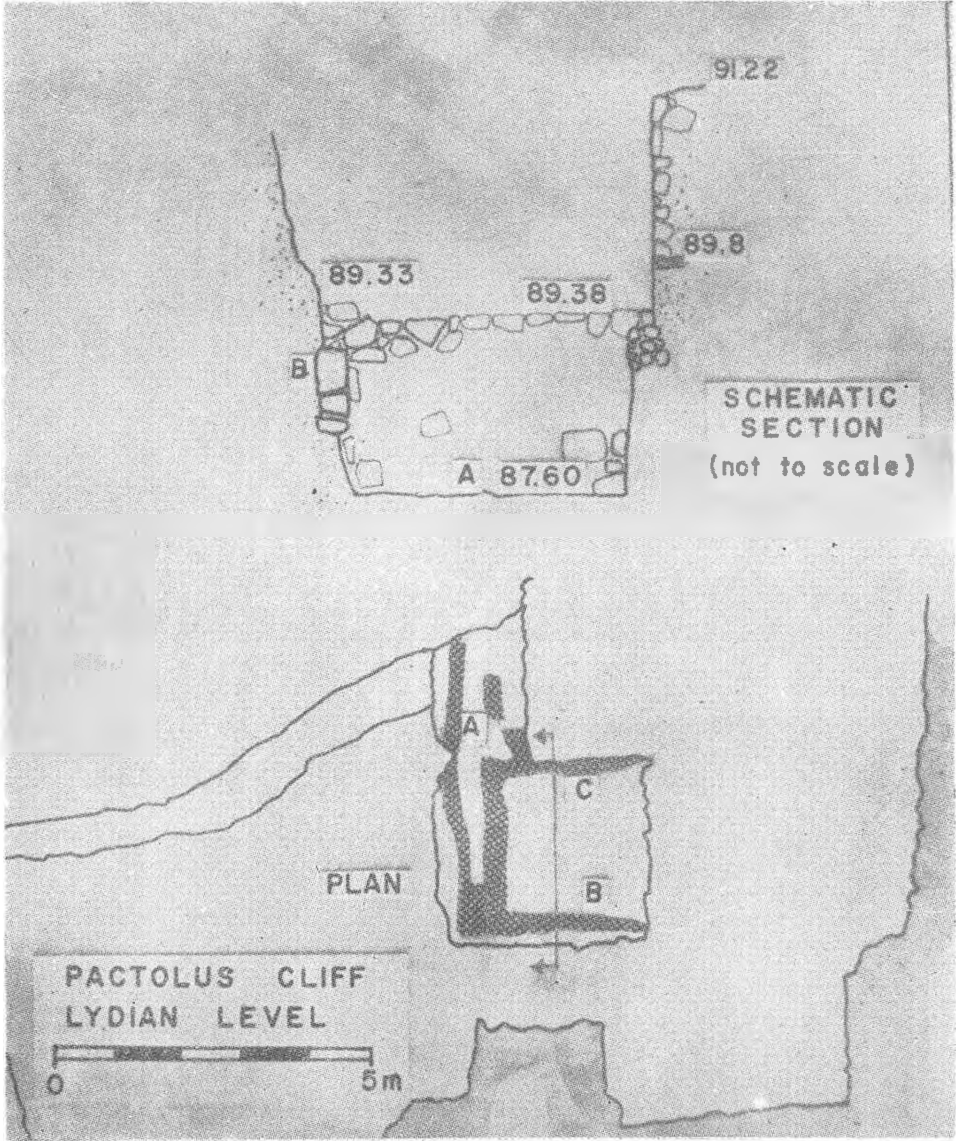


Fig. 3 — Pactolus Cliff (Pc) Schematic Section and Plan of Lydian Level.

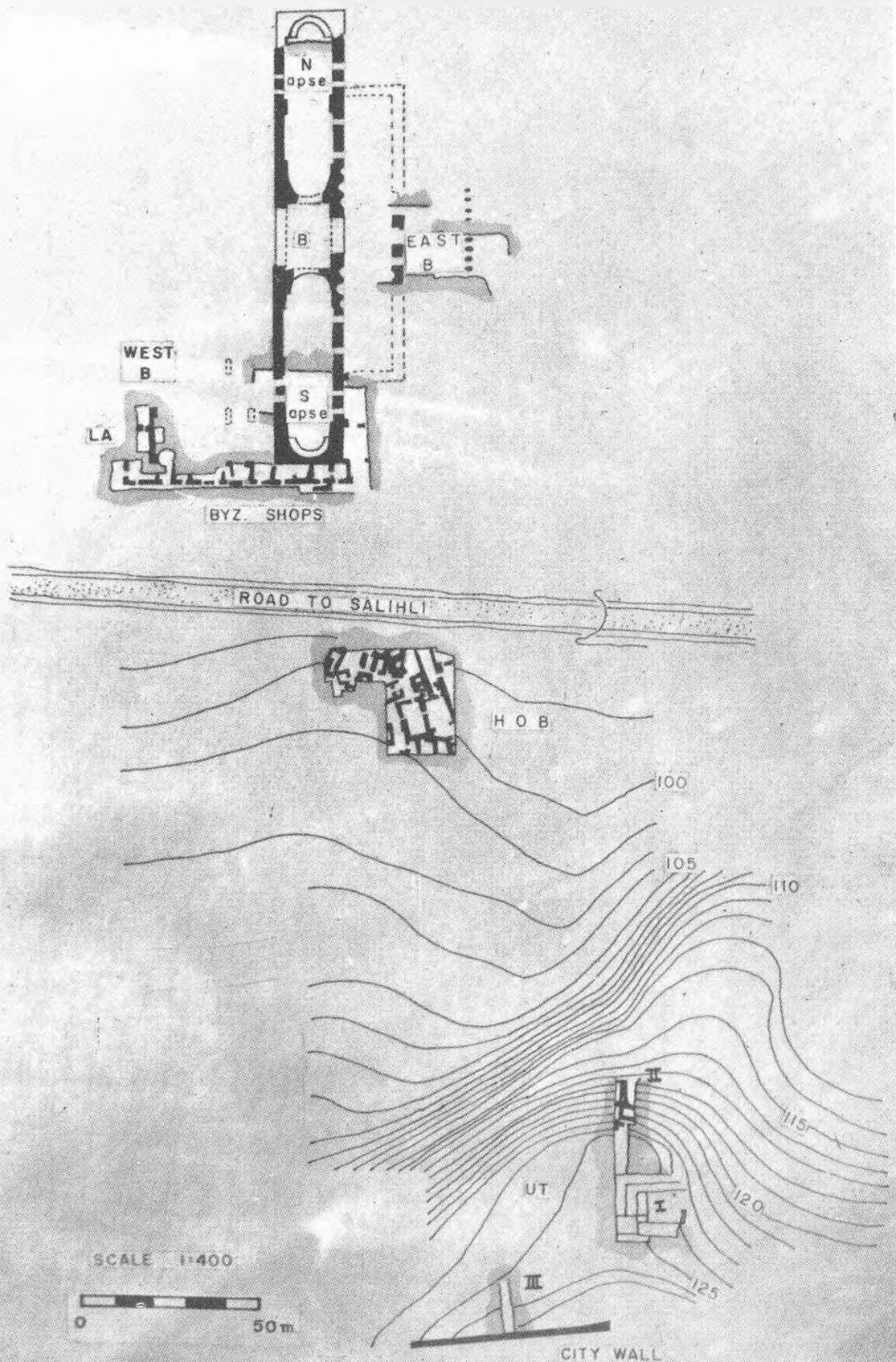


Fig. 4 .— Plan of Sectors UT, House of Bronzes (HOB), Byzantine Shops.

Building B and Areas WEST B and EAST B

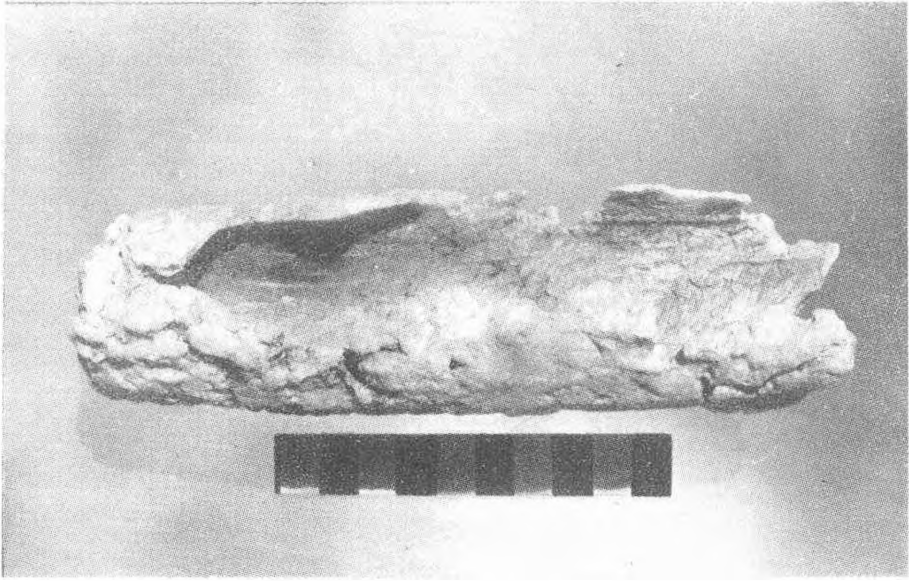


Fig. 6 Alabastron from Tomb 2.

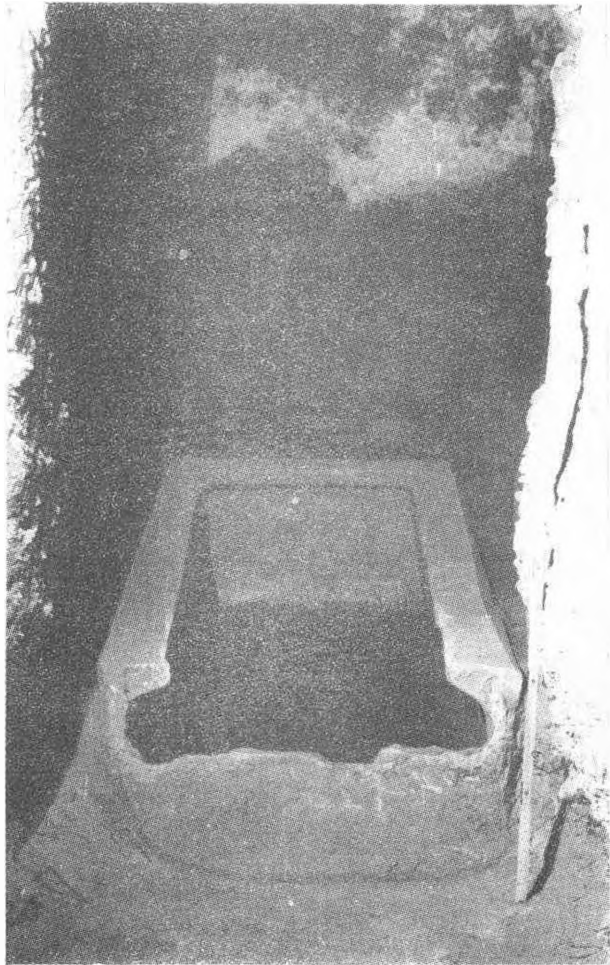


Fig. 5 — Tomb 2, terracotta sarcophagus  
*in situ*.

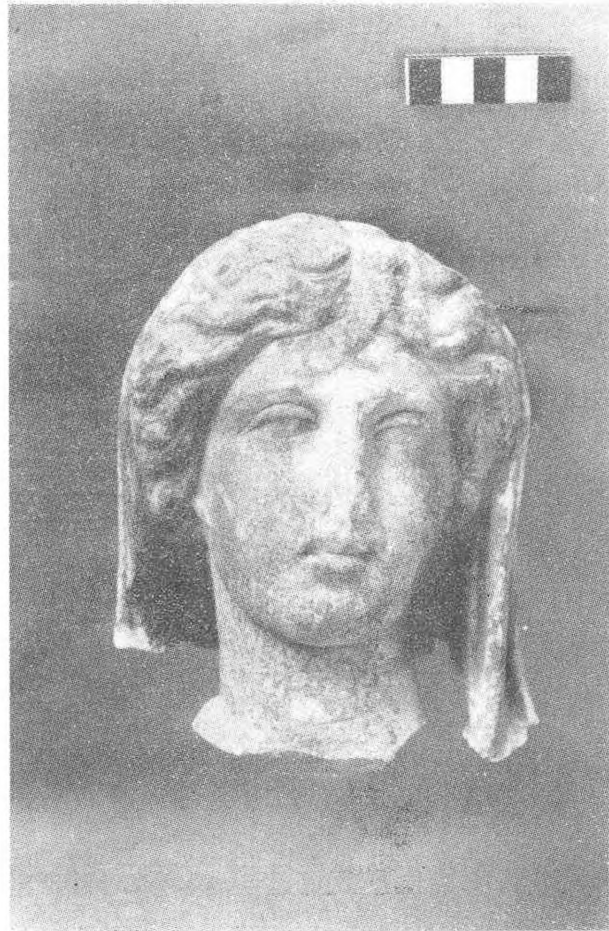


Fig. 7 — Marble Head of Girl, from  
Pc Sector.



Fig. 8 — Marble Head of A Horse, from Pc Sector

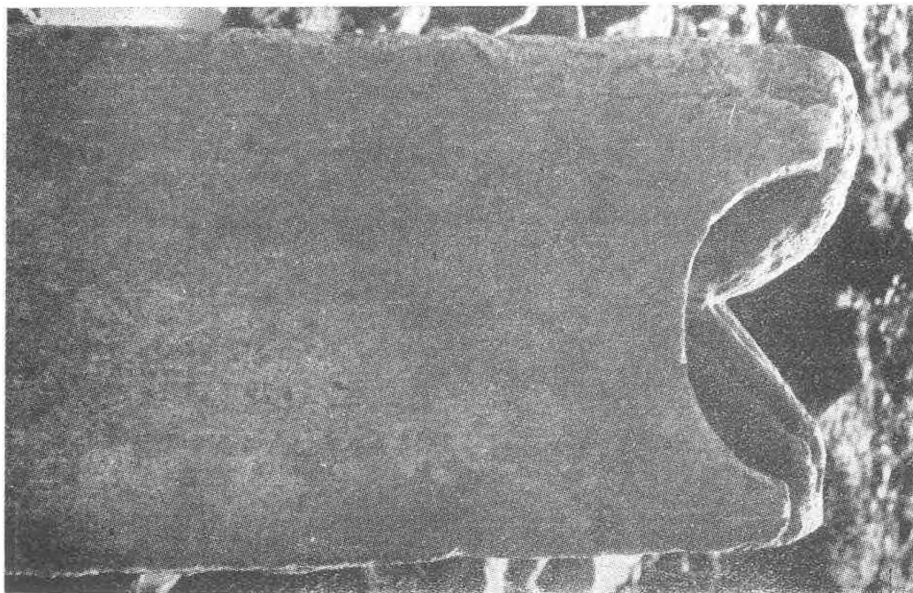


Fig. 9 — Architectural Marble Block with  
Lion Leg inscribed MA, from Pc Sector



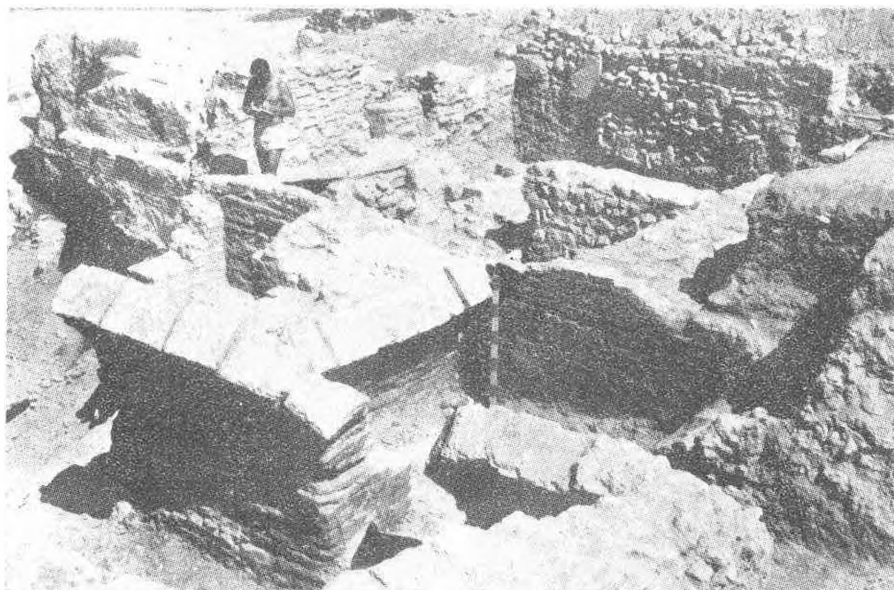


Fig. 10 — Excavation on Pactolus Cliff (Pc) from southeast.  
Foreground: LVC and SVC; Center: Tomb of Lintel



Fig. 11 — Marble Portrait of Priest from  
LVC. (Roman Mausoleum) Pc.

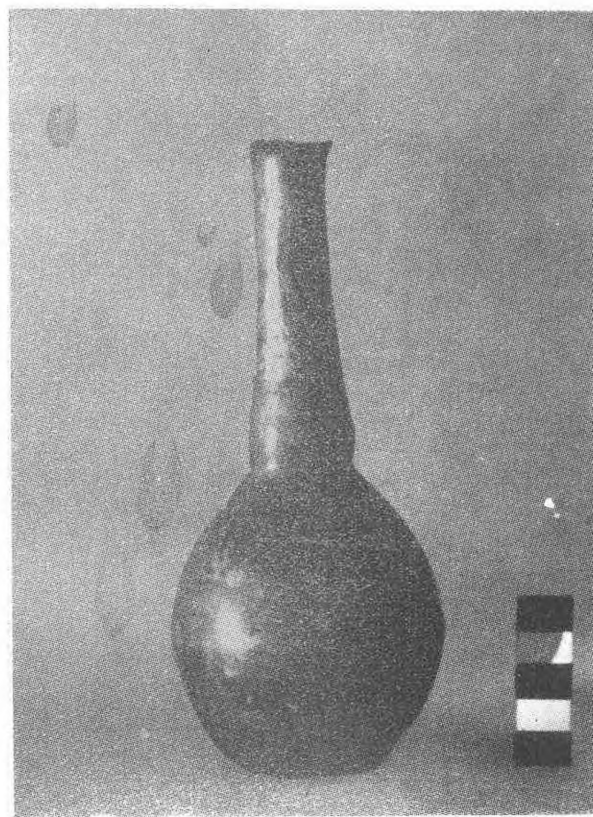


Fig. 12 — Glass Bottle from Roman  
Mausoleum LVC, Pit 1. Pc Sectors



Fig. 13 — View of Tomb of Lintel  
from Dromos

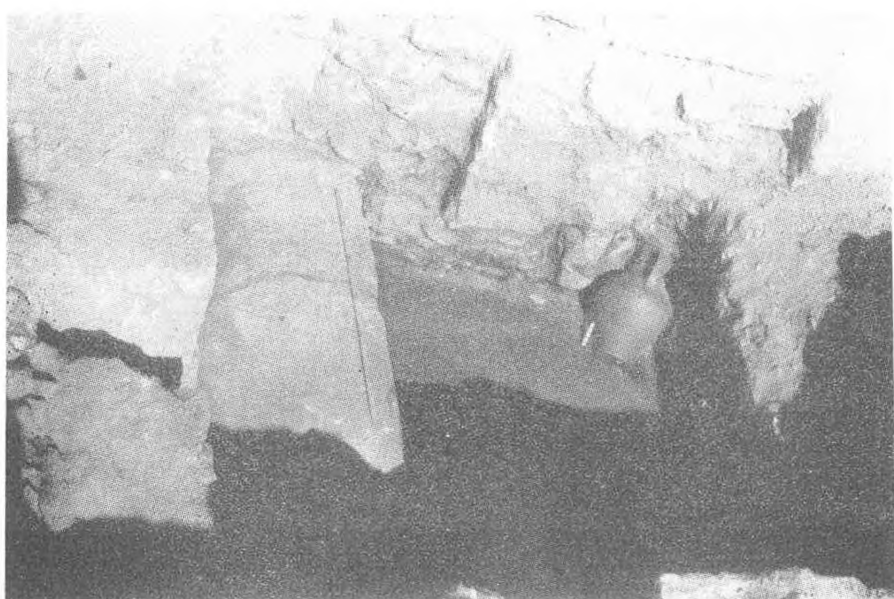


Fig. 14 — View of Tomb of Lintel; southern bench with niche, painted  
Late Lydian amphora *in situ*



Fig. 15 — Hellenistic Amphora decorated with Painting and Reliefs. Tomb of Lintel

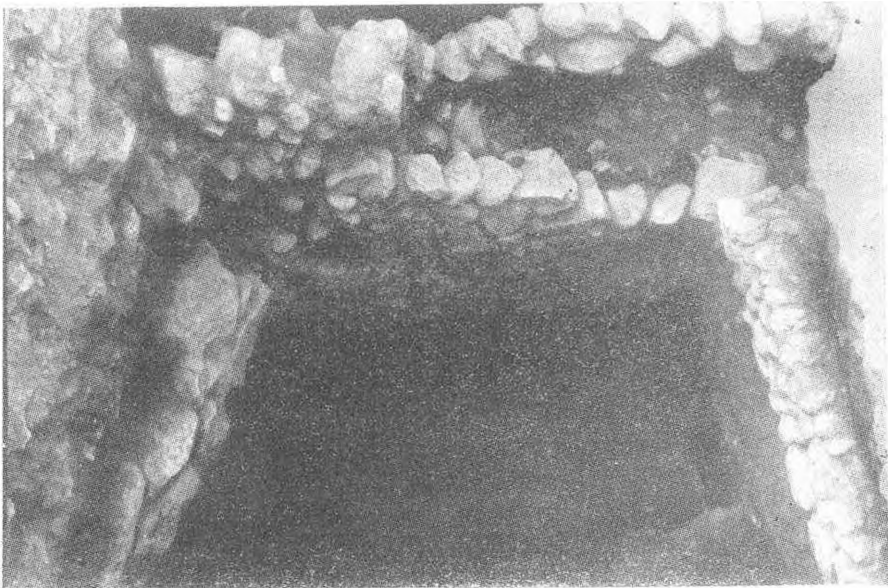


Fig. 16 — View of Lydian Walls, Pc. Left: wall B; center: wall A; right: wall C.



Fig. 17 — Roman Ivory Figurine of Hypnos? Sector UT.

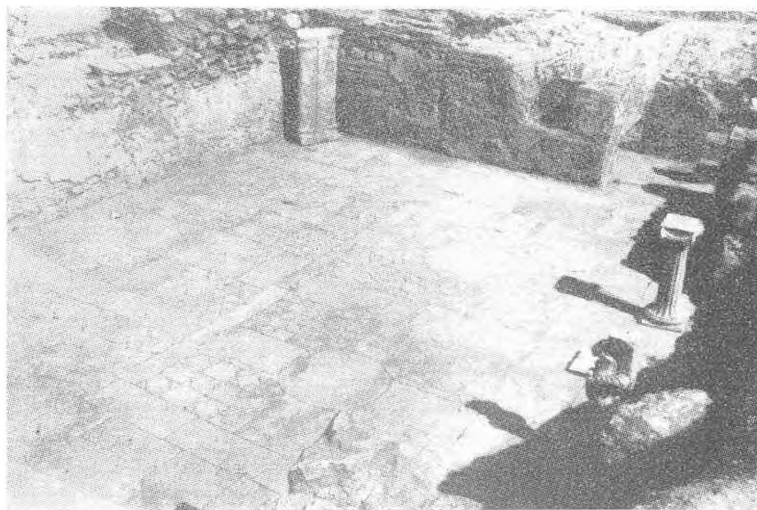


Fig. 18 — Marble Paved UNIT 5, House of Bronzes, from S. E. In background UNIT 8.

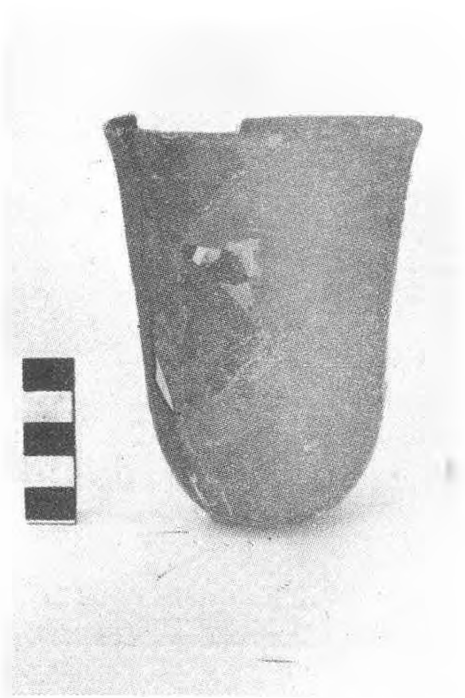


Fig. 19 — Blue Glass Beaker, from niche in north wall of UNIT 5, House of Bronzes

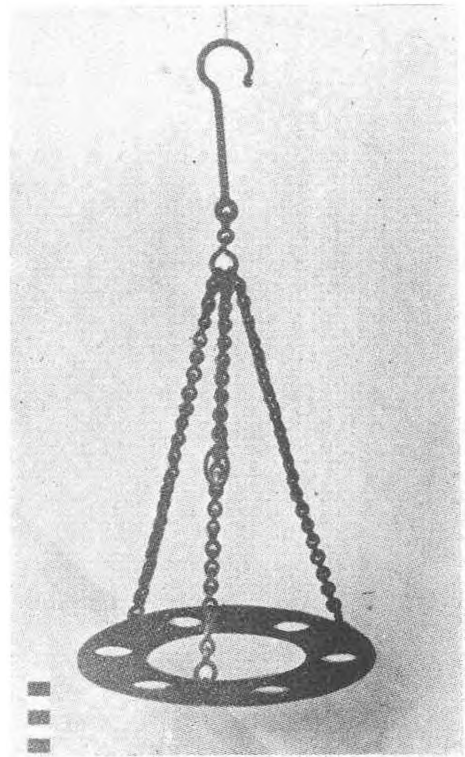


Fig. 21 — Bronze Polycandelon, UNIT 14, House of Bronzes

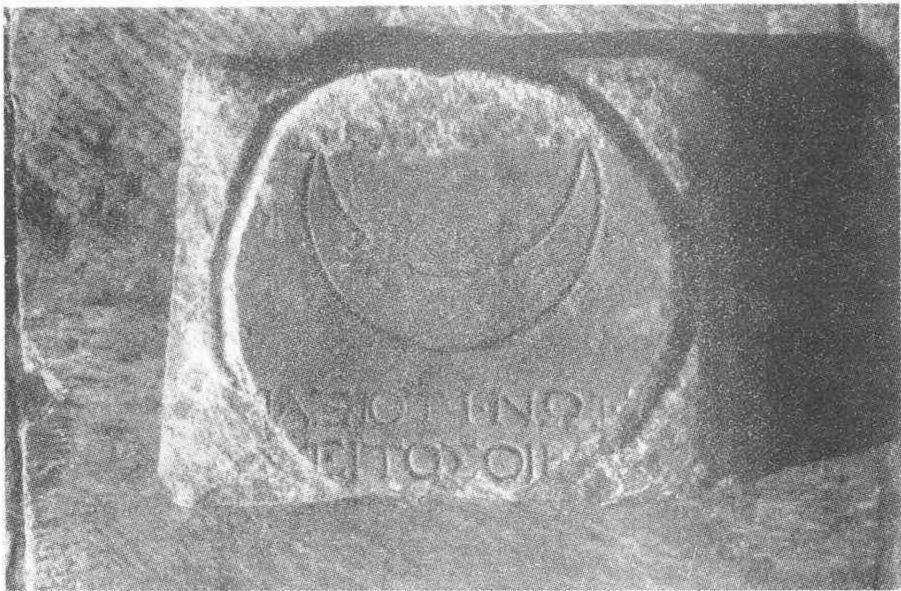


Fig. 20 — Dedication to (Mên) Axioteinos, UNIT 5, House of Bronzes



Fig. 22 — Roman Statues at South Edge of Excavation of the House of Bronzes



Fig. 23 — Roman Statue of Man, from House of Bronzes Area



Fig. 24 — Roman Statue of Woman, House of Bronzes Area



Fig. 25 — Terracotta Charioteer  
found near Roman Grave

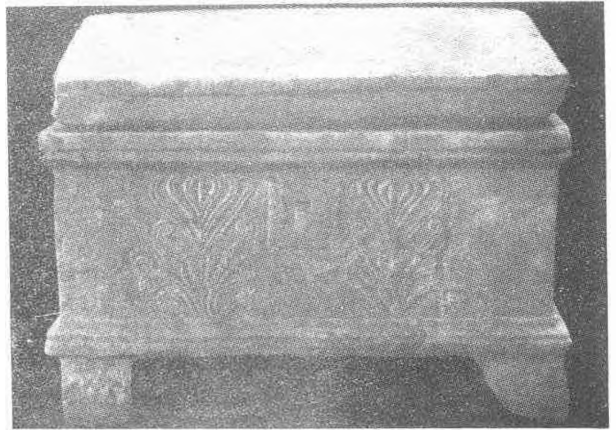


Fig. 26 -- Marble Casket of Child,  
Grave 1 of Roman Cemetery near  
House of Bronzes

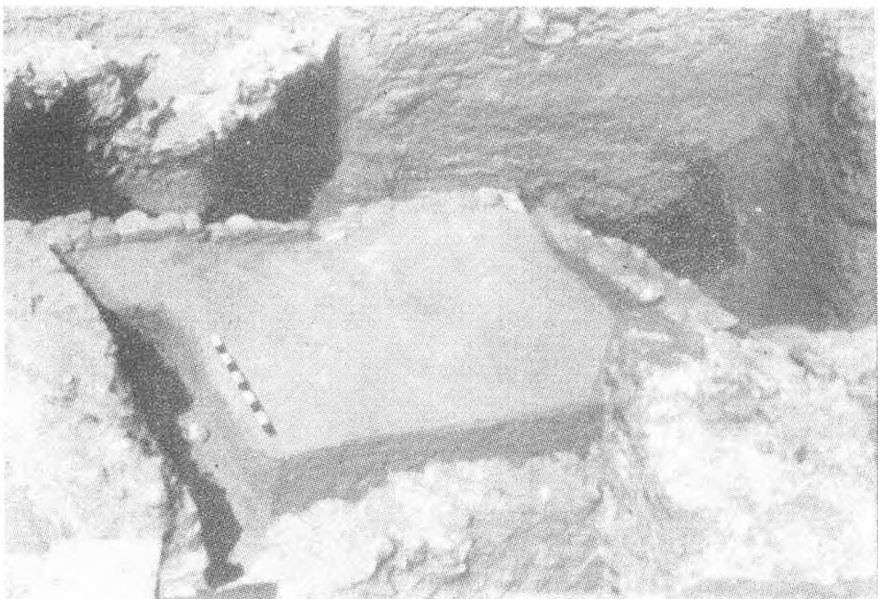


Fig. 27 — Lydian UNIT 24, Level II A, west of House of Bronzes



Fig. 28 — Lydian Jug, streaked on Buff. West of UNIT 24, Level II A.

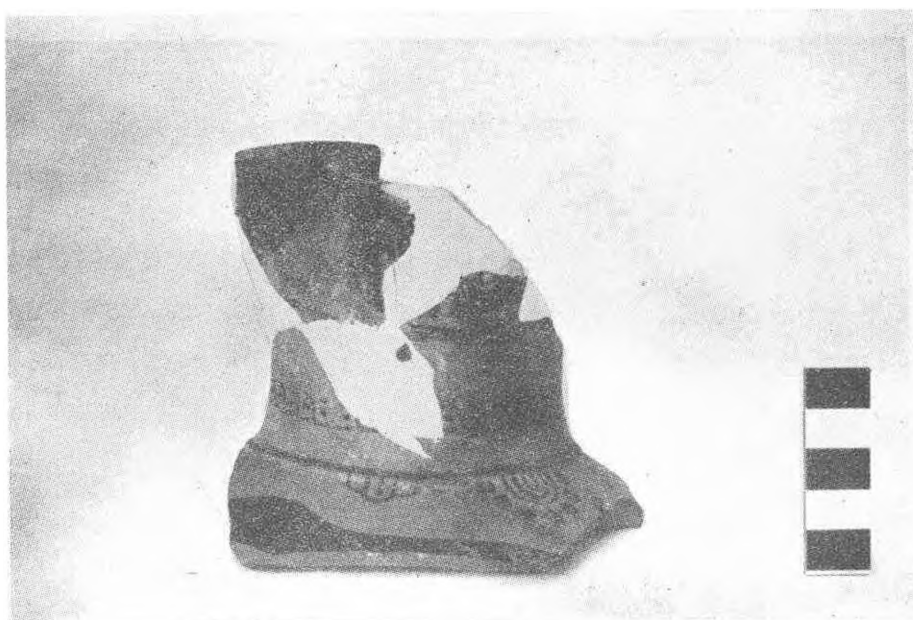


Fig. 29 — Neck and Shoulder Fragment of Rhodian Trefore Jug with Running Dog. Level II B.



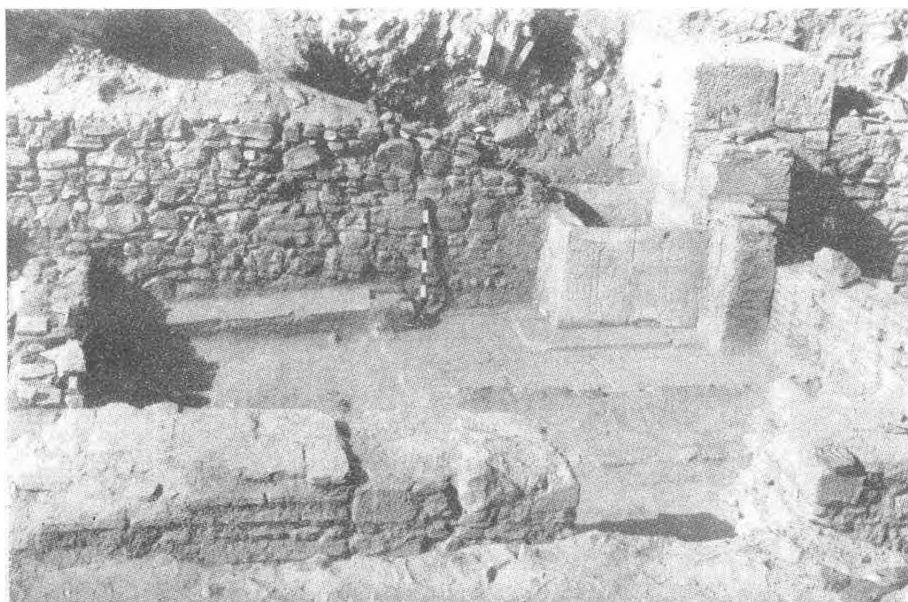


Fig. 30 — Byzantine Shop SW 8 with Marble Basin in northeast corner

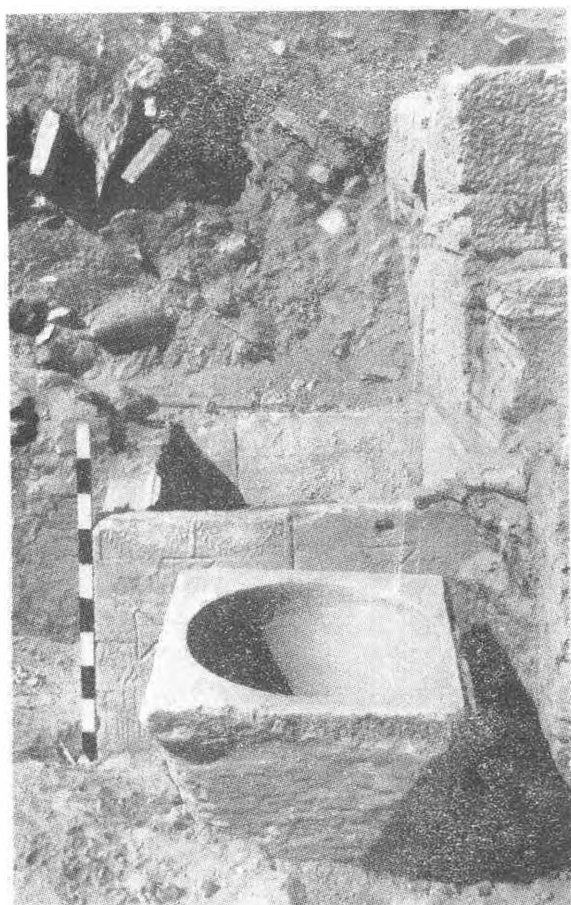


Fig. 31 — Byzantine Shop SW 8,  
Marble Block in front of Basin in  
northeast corner



Fig. 32 — Marble Torso of Athena  
found in Shop SW 10



Fig. 33 — Lydian Terracotta Revetment  
Fragment with Griffin. Found  
under SW 13



Fig. 34 Byzantine Sgraffiato Jug, from lowest limekiln  
level in South Hall, Building B.

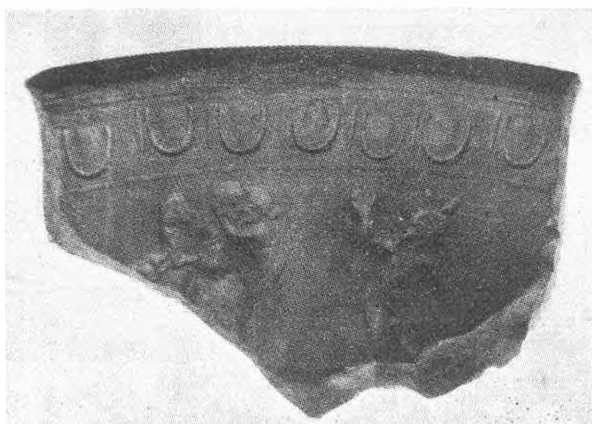


Fig. 35 — Terracotta Mould for Relief Bowl, from Pit  
in South Hall of Building B.

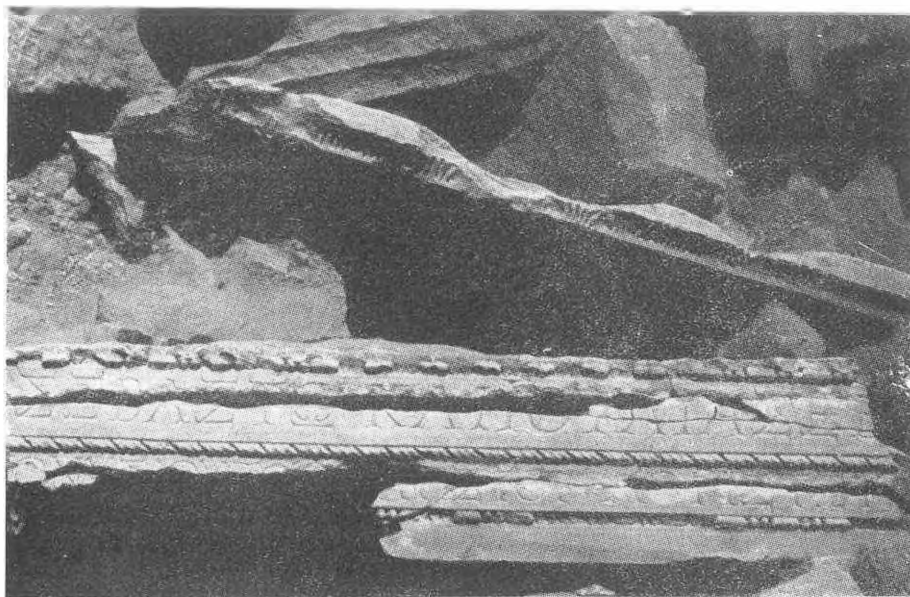


Fig. 36 — Inscription from Gate in East B.



Fig. 37 — Corinthian Capital with Head of Athena, East B.



Fig. 38 — Corinthian Capital with Head of Laughing Satyr, East B.

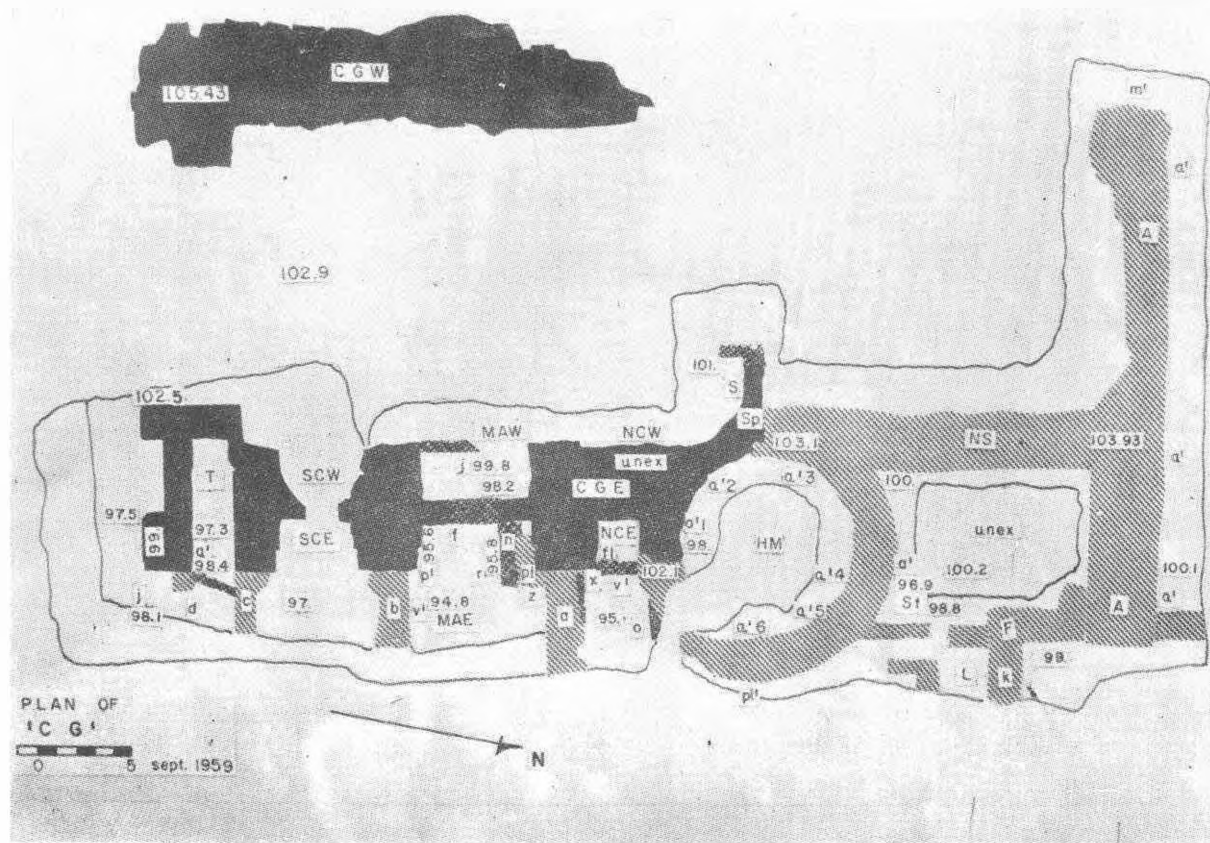


Fig. 39 — Plan of CG Area

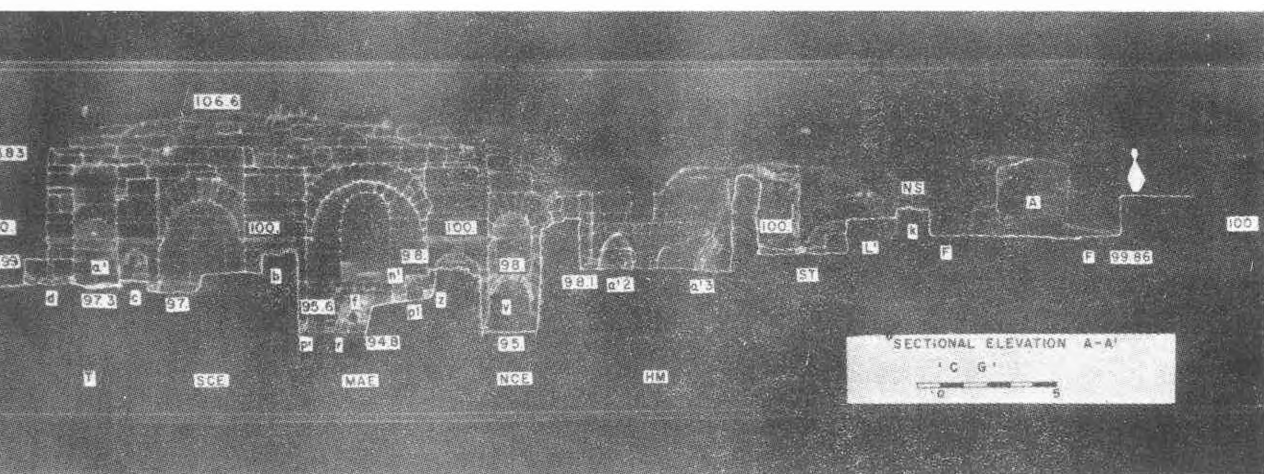


Fig. 40 — Sectional Elevation CG.

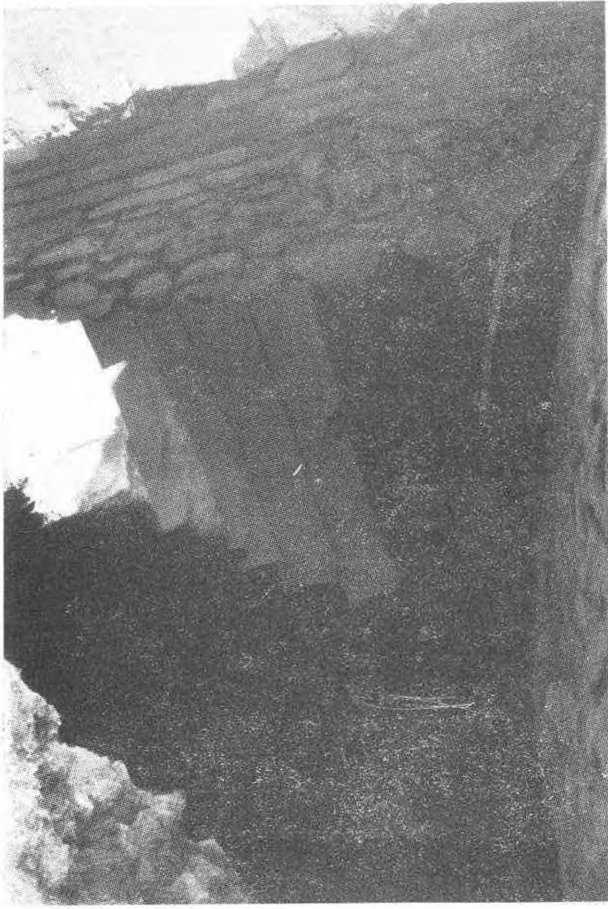


Fig. 41 — Stair on Brick Arches outside the north wall of UNIT HM.

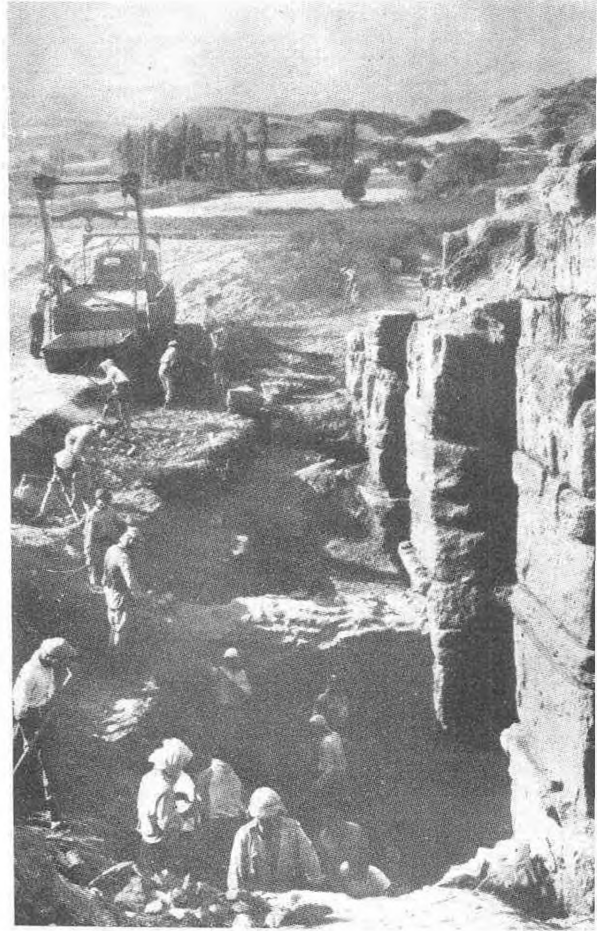


Fig. 42 — Masonry Structure CGE, excavations along east face

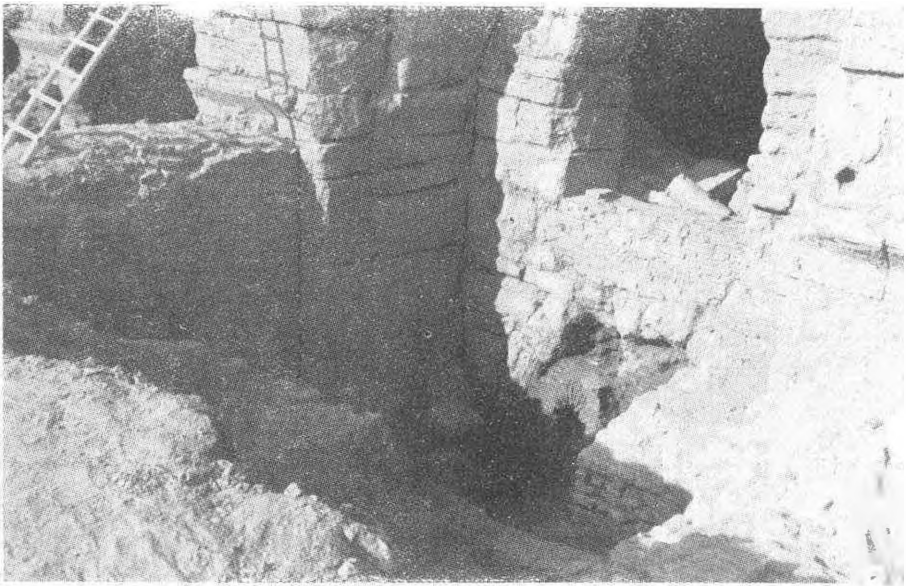
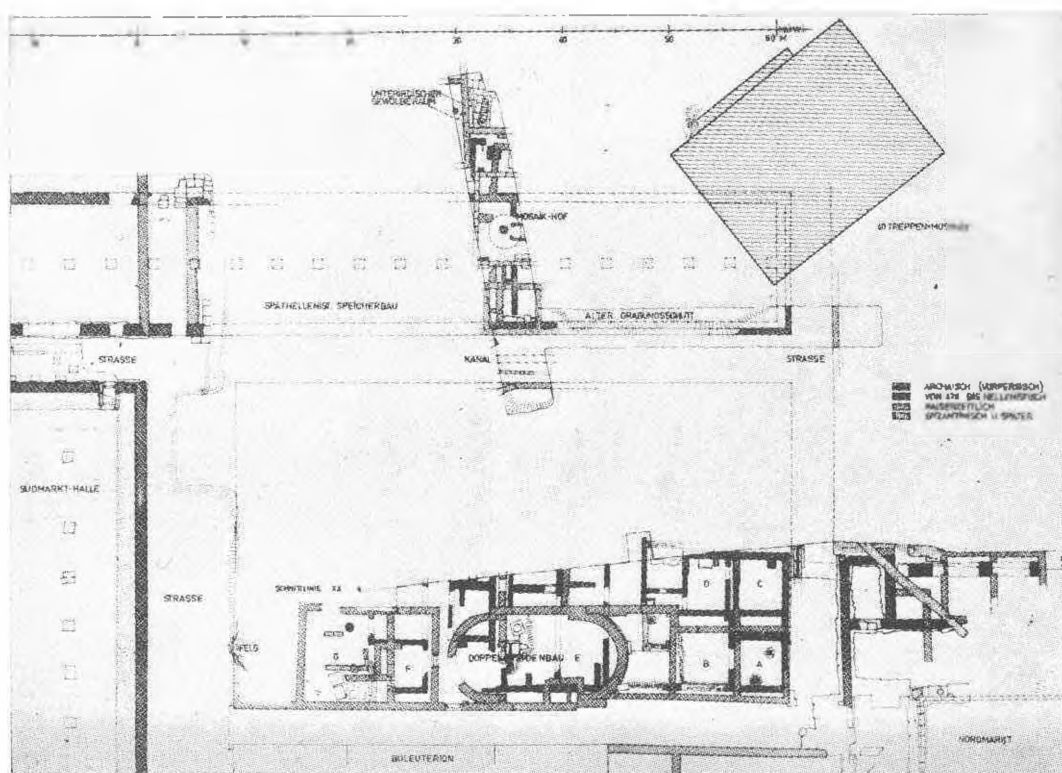
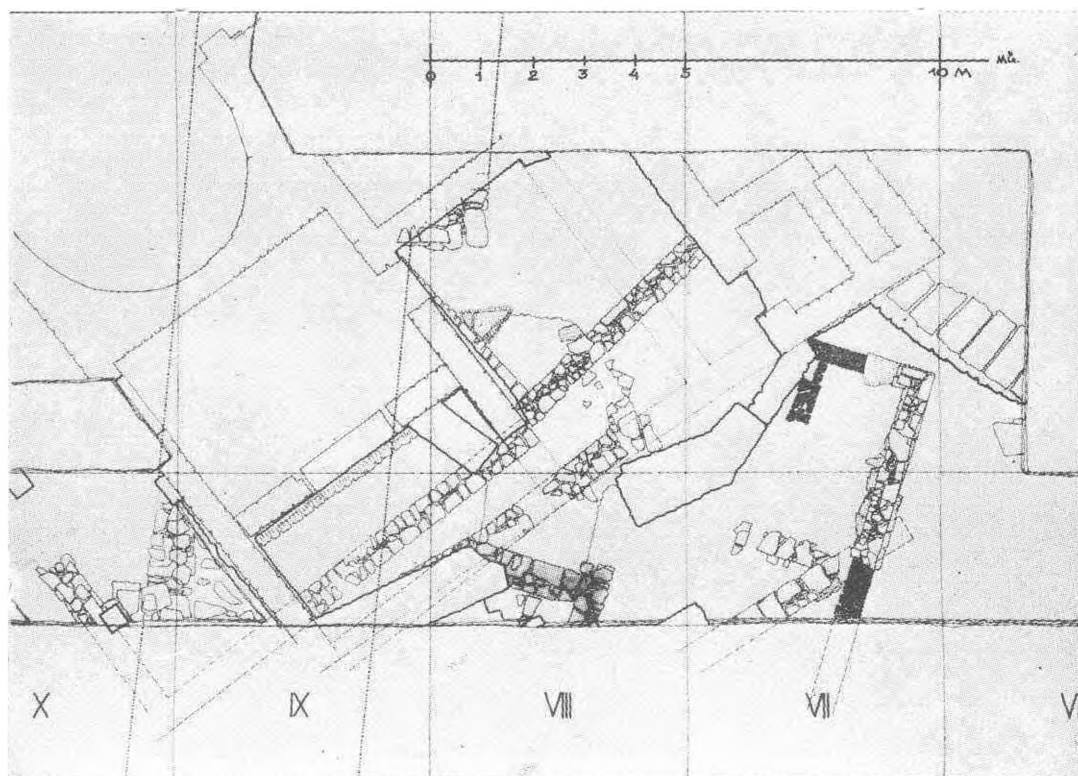


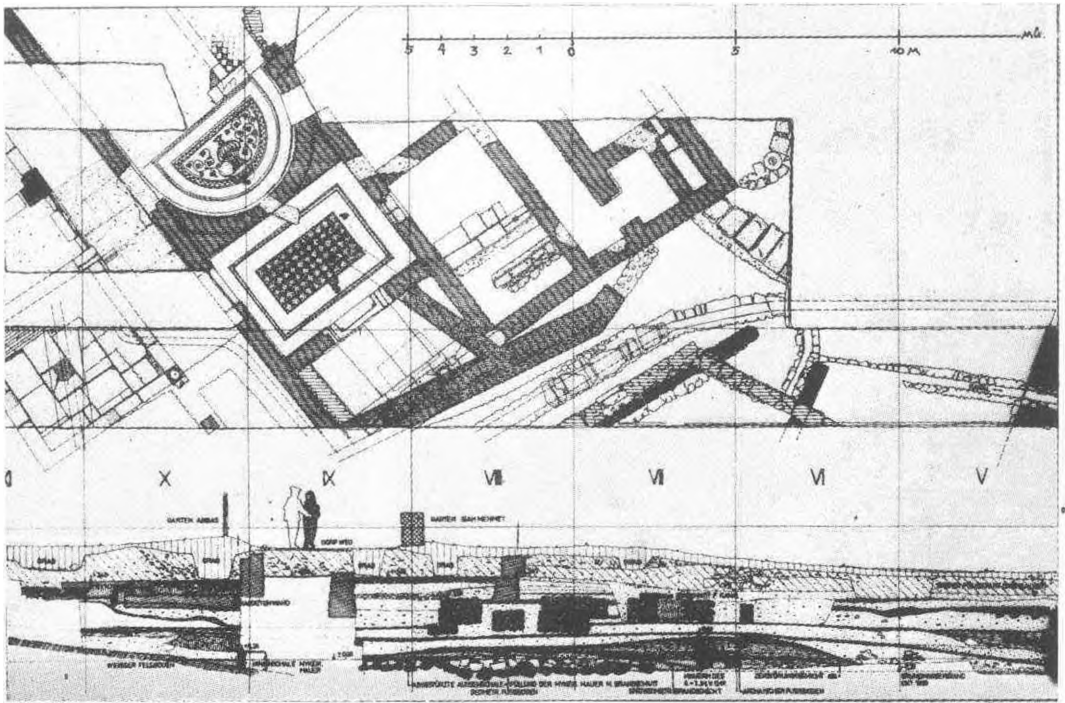
Fig. 43 — View of MAE (Main Arch, East Chamber) from northeast.  
Lower center: Furnace arch f; on the left: Rubble wall b.



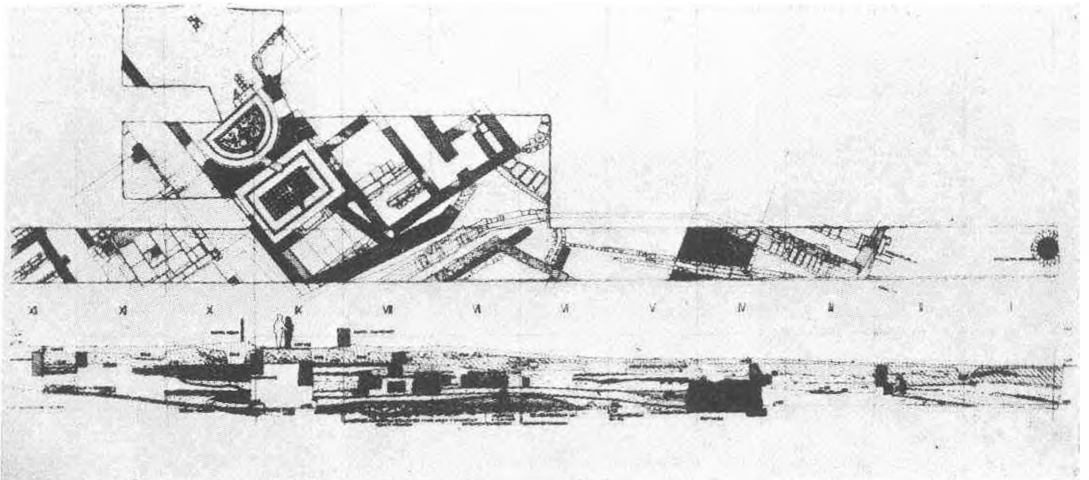
1 — Gesamtplan sog. Südwestabschnitt Mstb. 1:50, nur Schichten bis einschliesslich römische Siedlungsperiode



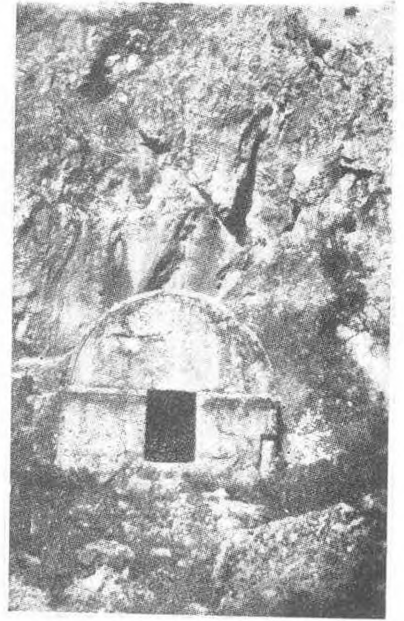
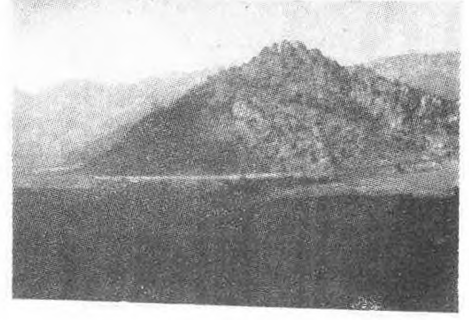
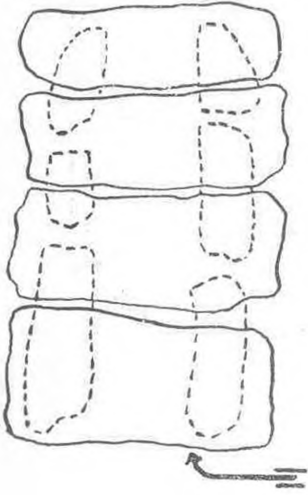
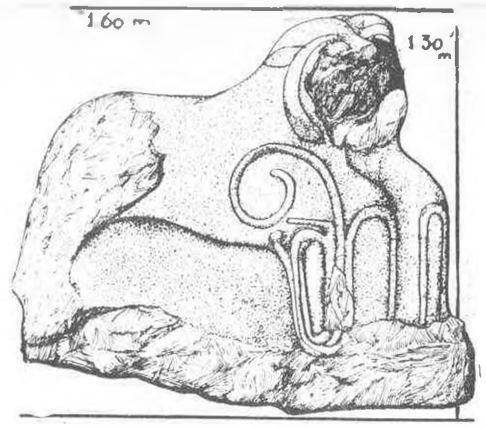
Anlagen: 2 — Übersichtsplan sog. Ostabschnitt Mstb. 1:200



3 — Ergänzungsplan mit Schichten hellenistisch bis mykenische Periode, Mstb. 1:50 als Deckblatt zu Plan oben!



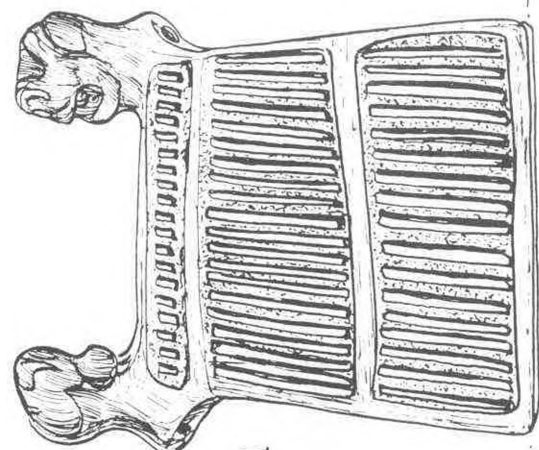
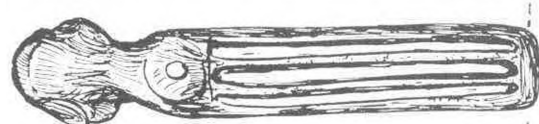
3 a



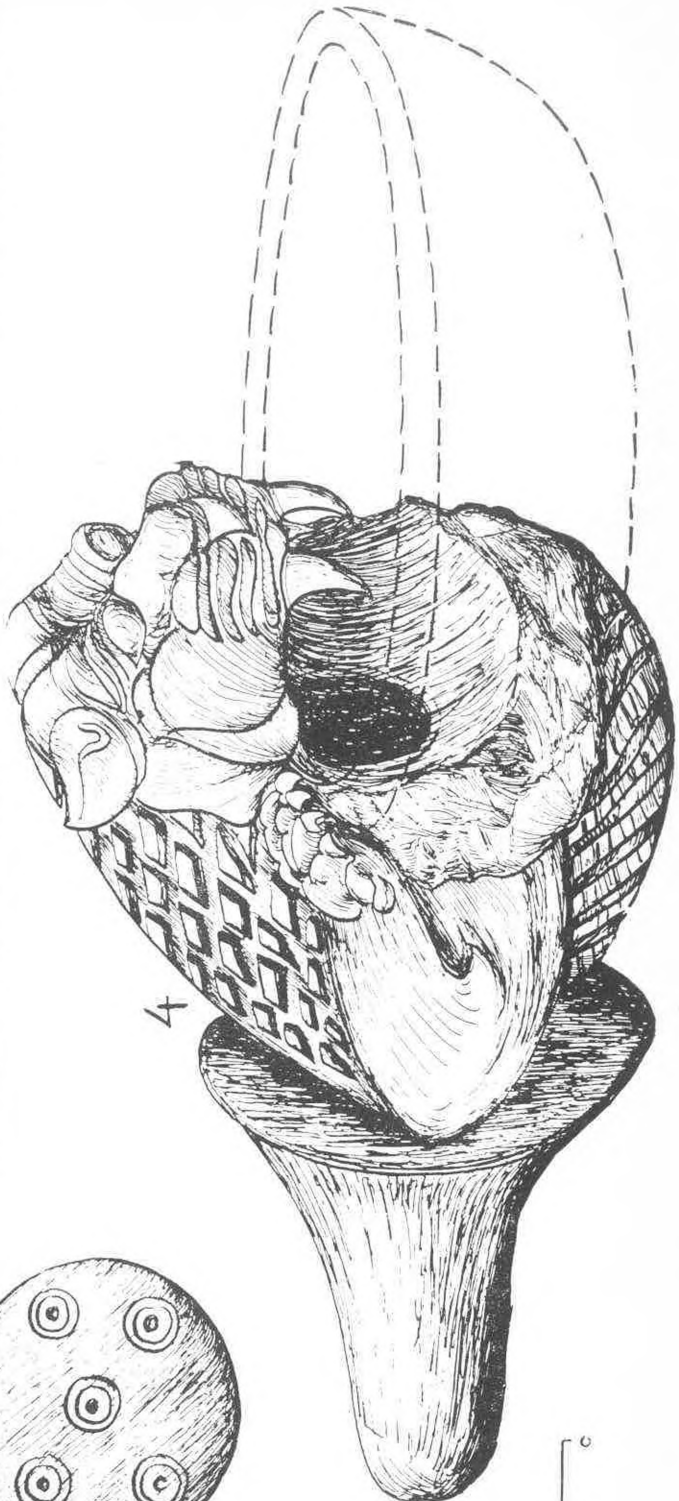
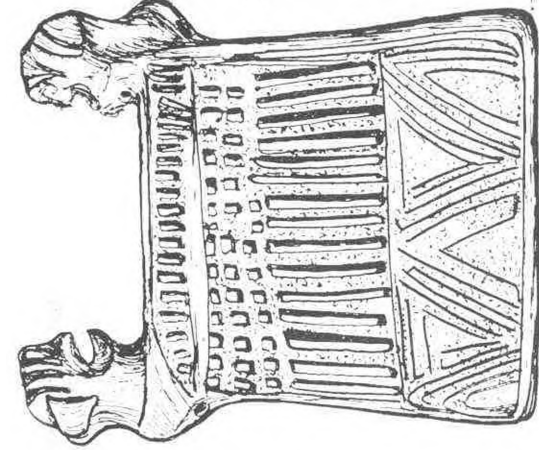
Levha: II

1 — Afsin Kazasının (Maras) Hunu Köyünde bulunan Hitit devrine ait kapı arslanı heykeli; 2 — Göksun Kazası (Maras) Taşoluk Köyünde meydana çıkarılan taşbıdam tipli bir mezar; 3 — Cukurbisar (Maras) kalesi; 4-6 — Cukurbisar kaya mezarları; 7 — Kesel kaya mezarı

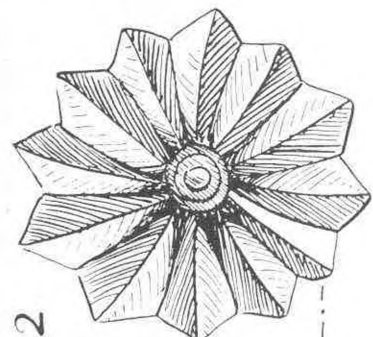




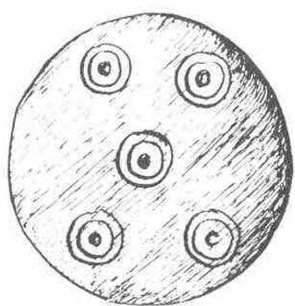
1



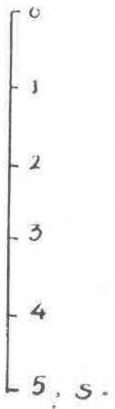
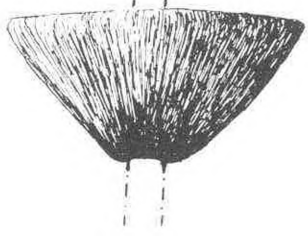
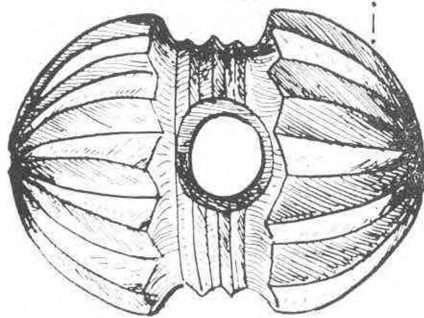
4



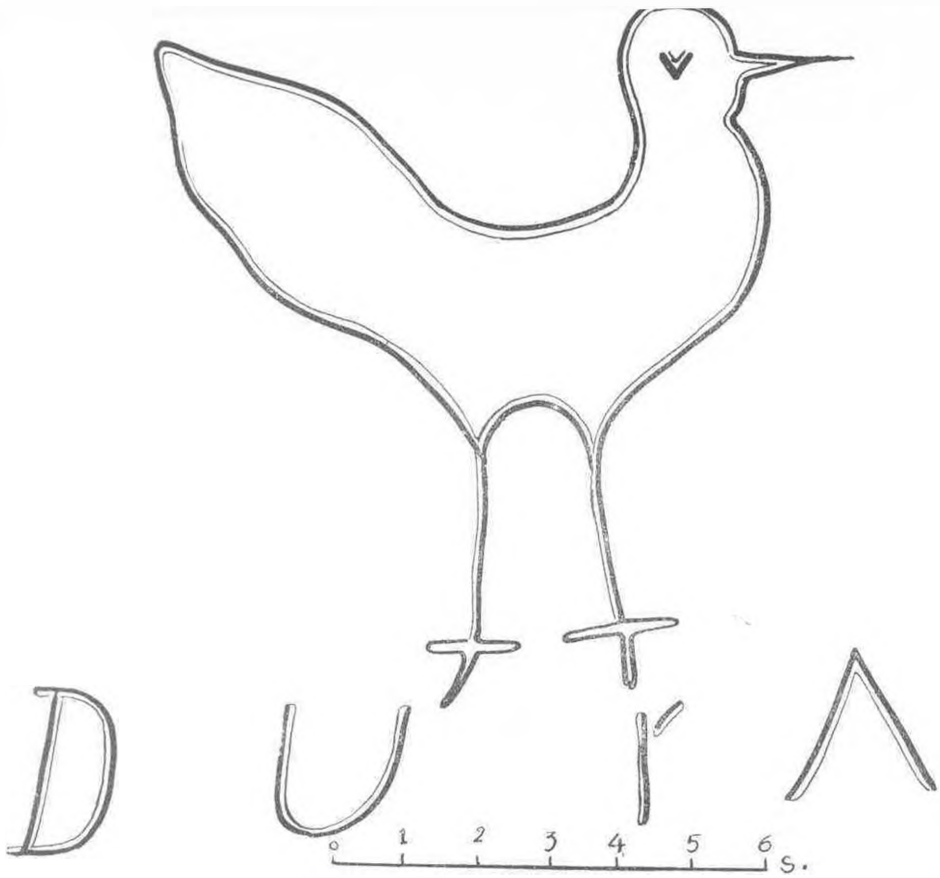
2



3



Lev. III

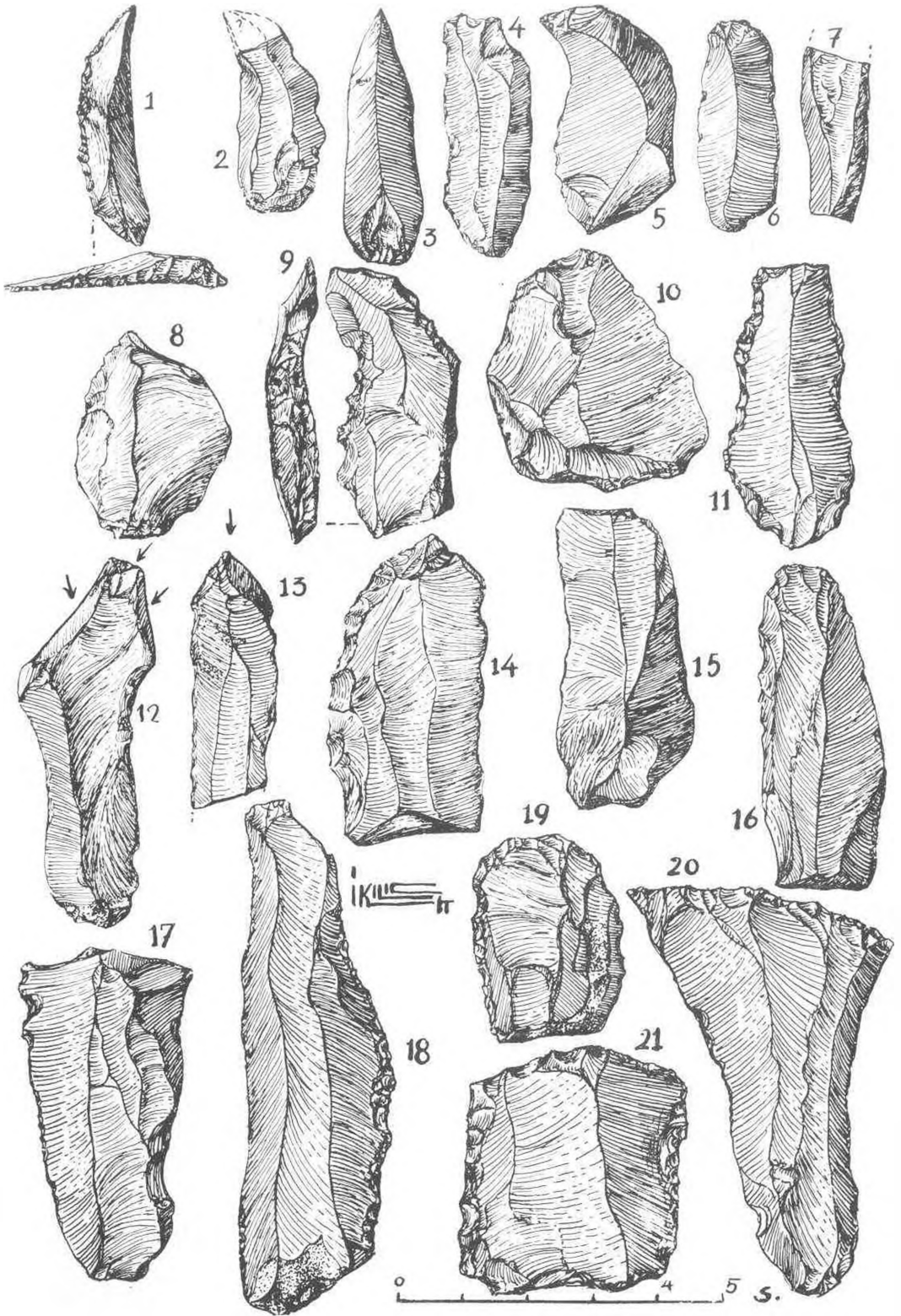


Lev: IV

Afşin Kazasında Mağaraözü denilen kaynaklı tabii bir mağara içinde taş üzerinde görülen kus resmi

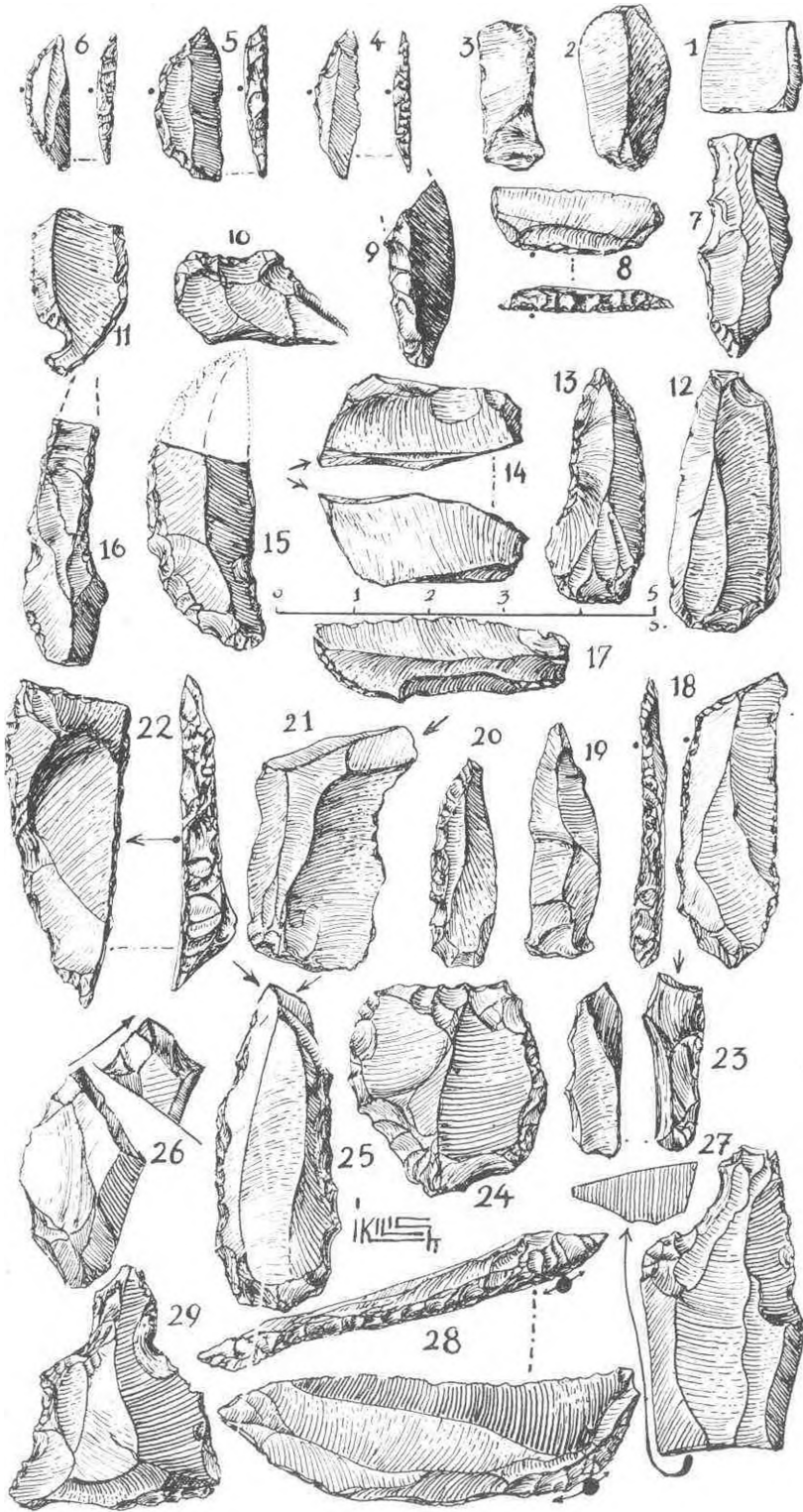


Döngel mağaralarında (Direkli) ele geçen Tarihöncesi vesikaları 1 — Çakmaktaşıdan bir çakı; 2 - 4 Kullanılmış obsidiyen âletleri; 5 — Kemik âlet; 6 Kumtaşıdan balta; 7 - 9 Bakırçağı seramiği; 8 - 10 — Neolitik çanak parçaları



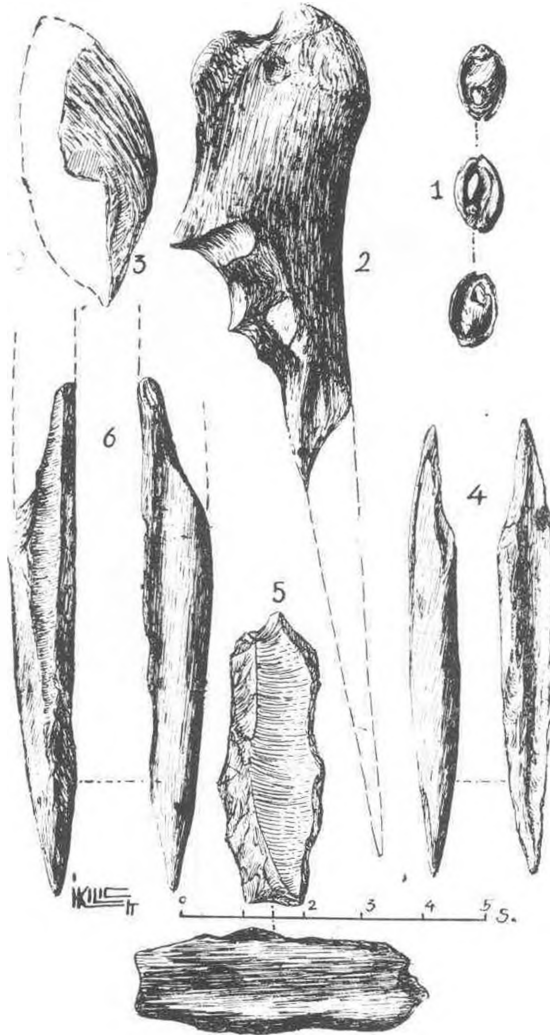
Lev: V

Döngel mağaralarında (Direkli) meydana çıkarılan üst paleolitik'e ait (aurignacien) çakmaütaşından yapılmış büyücek uç, uç-kazıyıcı, çakı, kalem ve çakı-kazıyıcılar



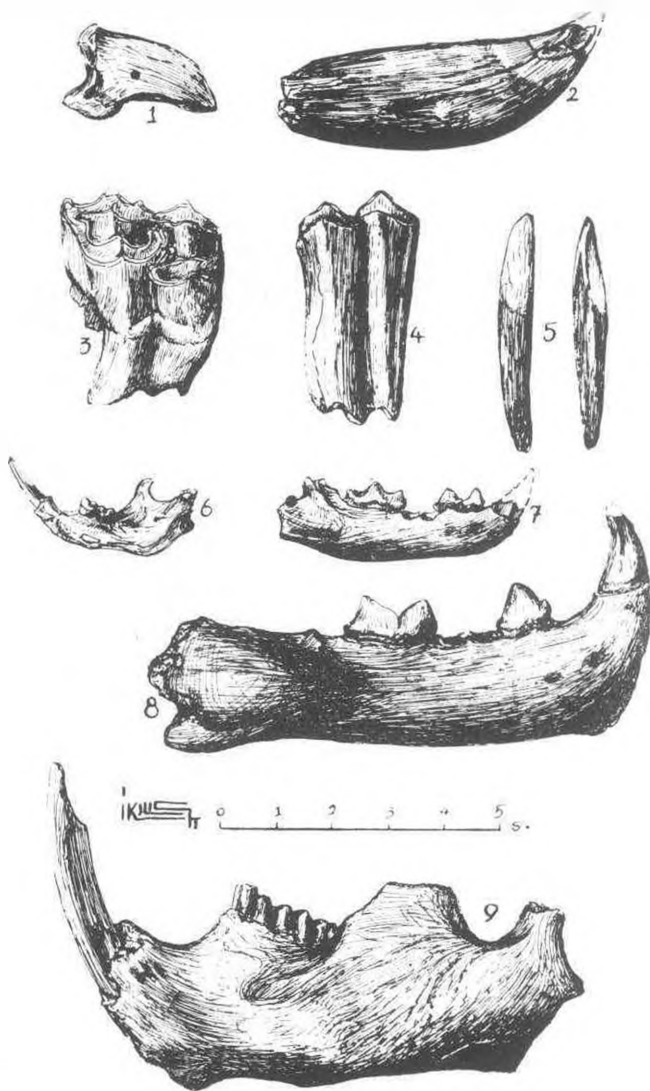
Levha: VI

Döngel mağaralarında (Direkli) Üst paleolitik katlarda orinyasiyen âletlerle birlikte elegeçen minik çakmaktaşı (mikrolit)

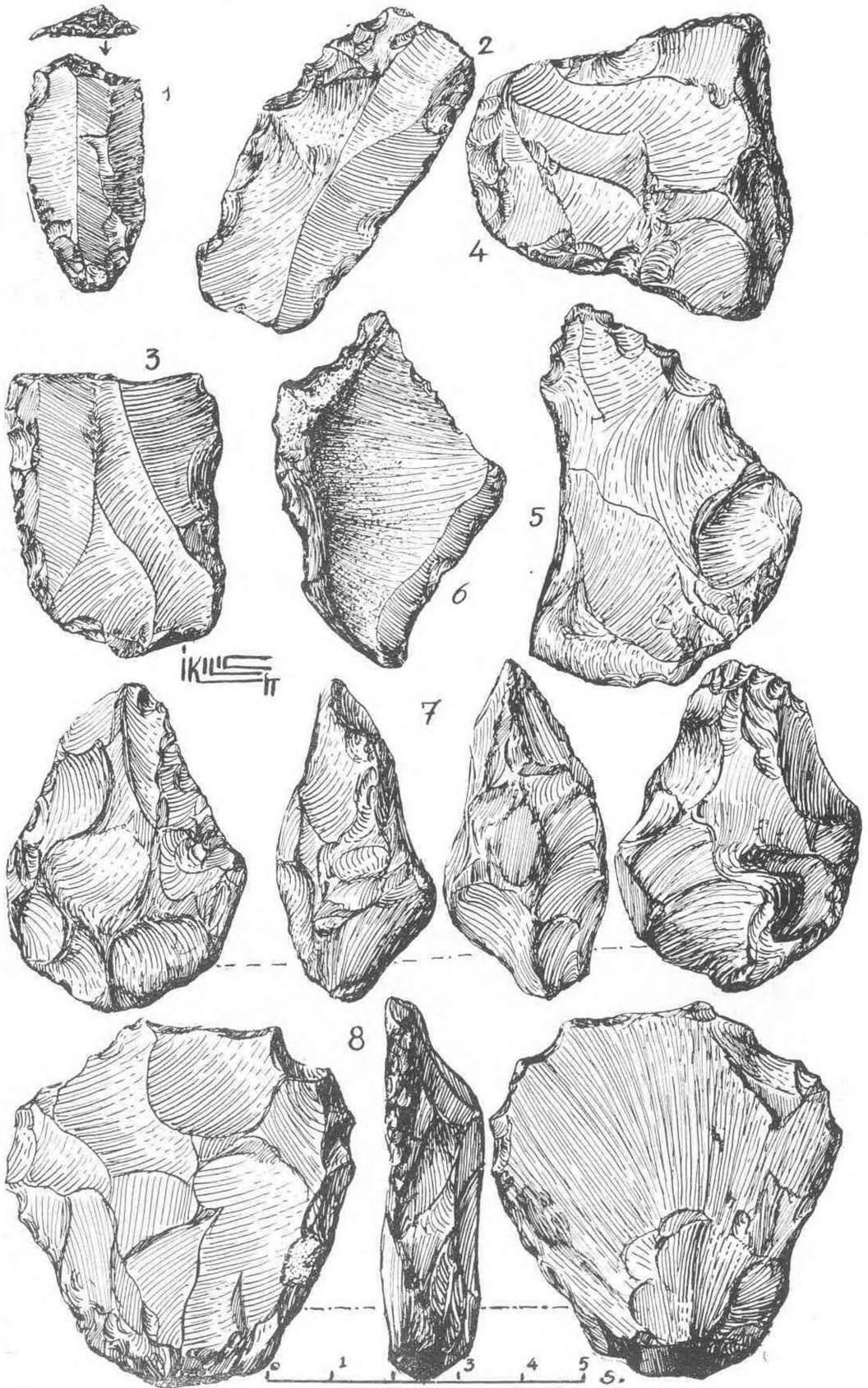


## Levha: VII

Döngel mağaralarında (Direkli) Üst paleolitik katlarda ele geçen kemik âletler, kavkıdan delikli süs eşyası, 5 numaralı âlet, hayvan kaburga kemiği parçası olup çakmaktaşı ile işlenmiş bir kazıvıcıdır



Döngel mağaralarında (Direkli) üst paleolitik katlarda meydana çıkarılan hayvanların diş, tırnak ve çene kemiği parçaları 1 — Tırnak kemiği; 2 — Ayı köpek dişi; 3-4 — Geviş getiren hayvan dişleri (öküz ve geyik); 5 — Domuz dişi; 6 — Gelengi, sağ alt çene parçası; 7-8 — Et yiyen hayvanların sağ alt çene parçaları (kedigiller); 9 — Kunduz sol alt çene parçası



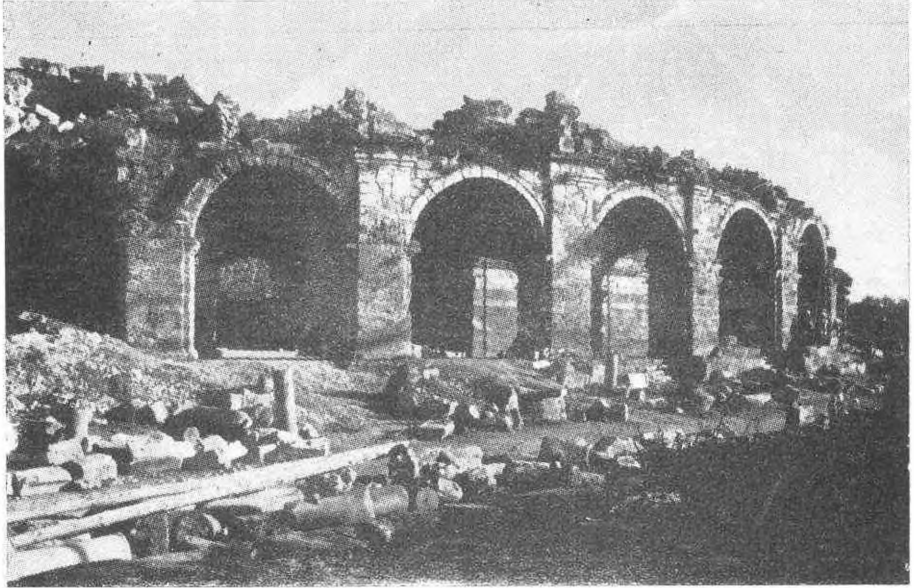
Levha: VIII

1 — Sarıyatak-Köycevran Koyleri arasında yeryüzünde bulunan orinyasiyen tipli güzel bir çakı-kazıyıcı (çakmaktaşı); 2-8 — Pazarcık Kazasında Gani dağı çevresinde toplanan Alt paleolitik âletler (çakmaktaşı)





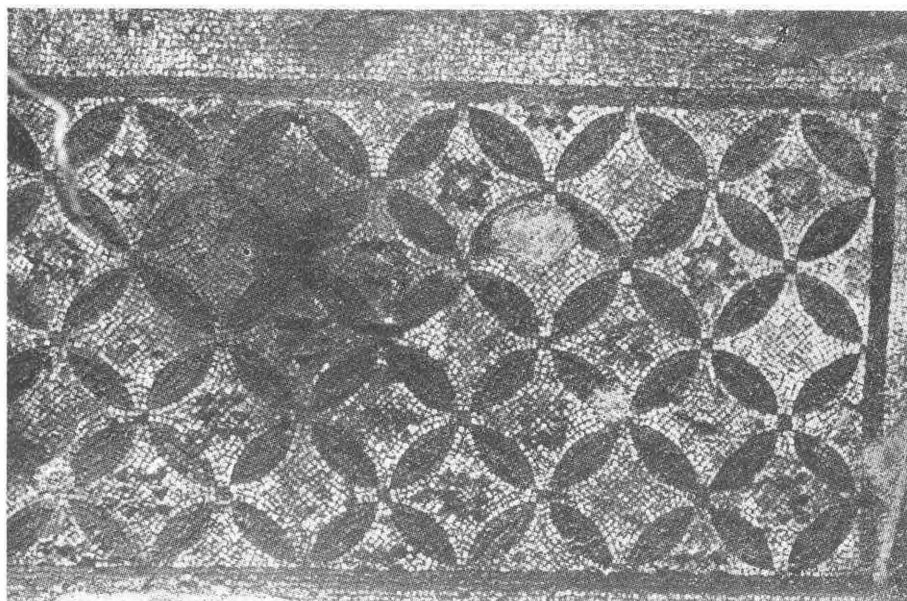
(Res: 1)



(Res: 2)



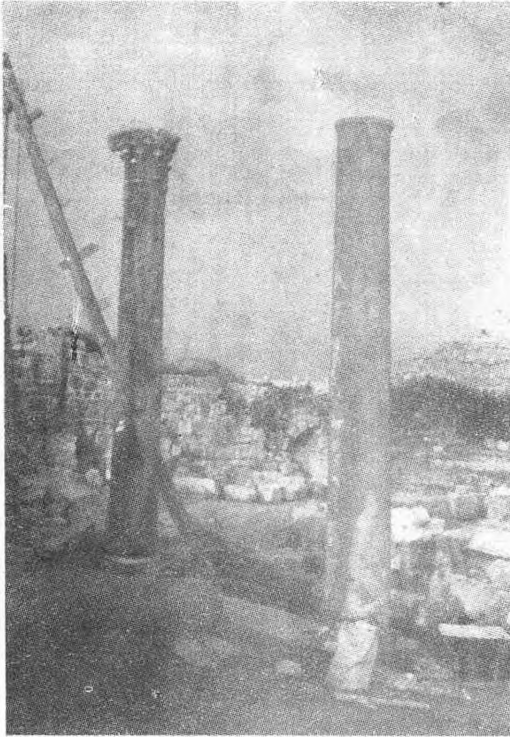
(Res: 3)



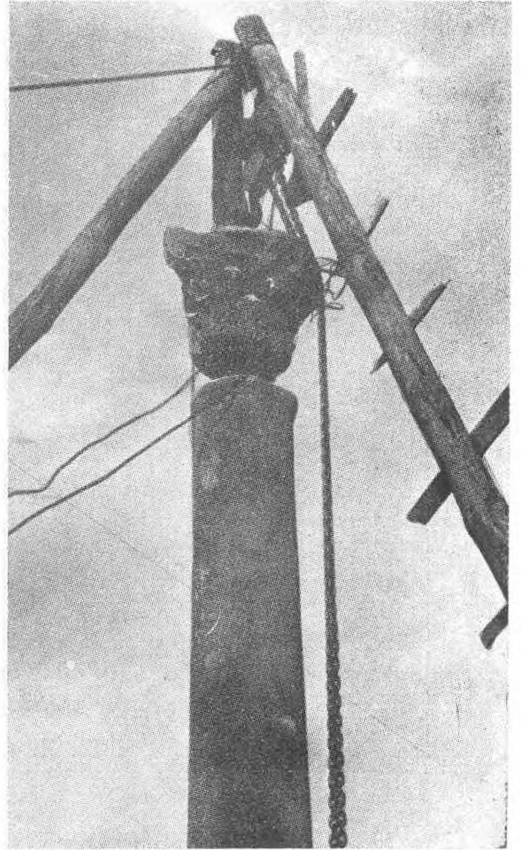
(Res: 4)



(Res: 5)



(Res: 6)



(Res: 7)



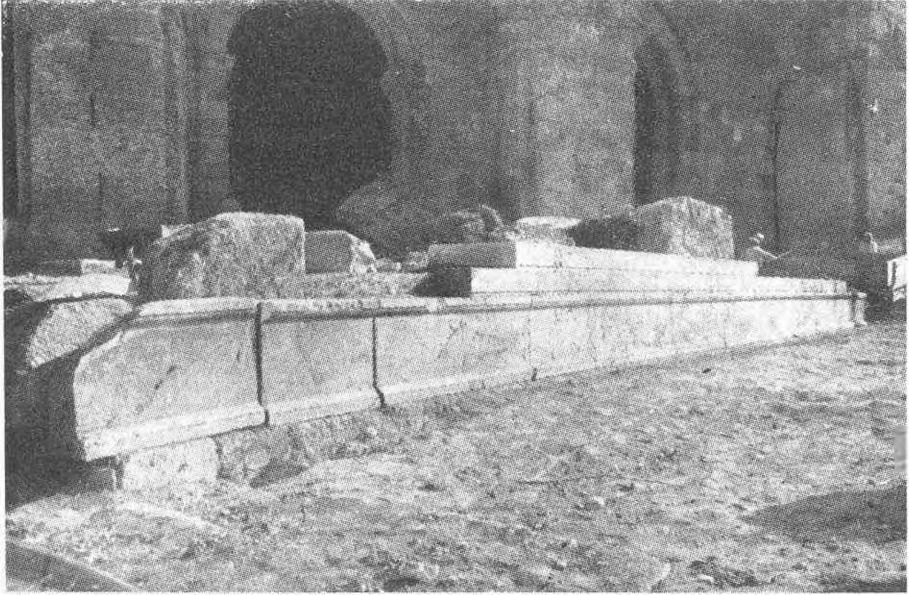
(Res: 8)



(Res: 9)



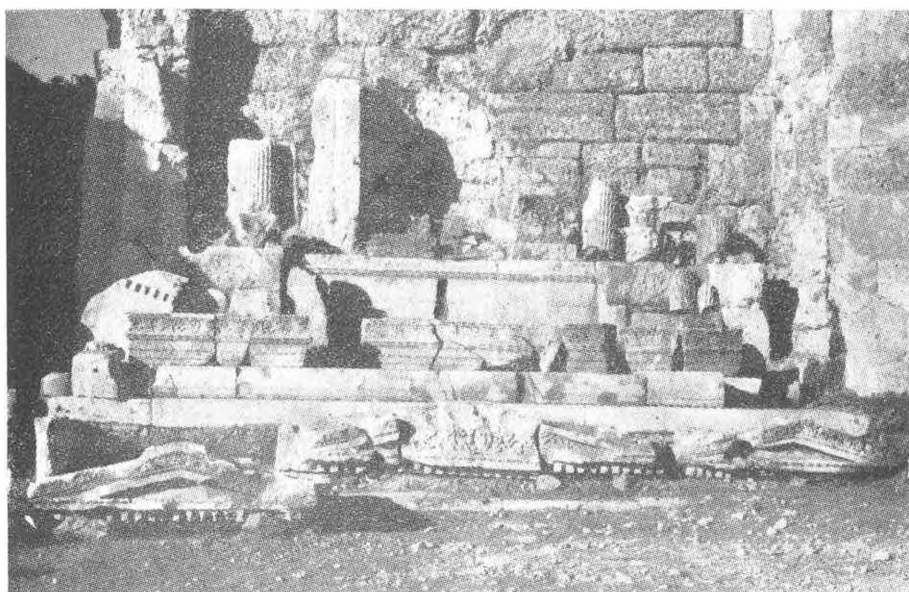
(Res: 10)



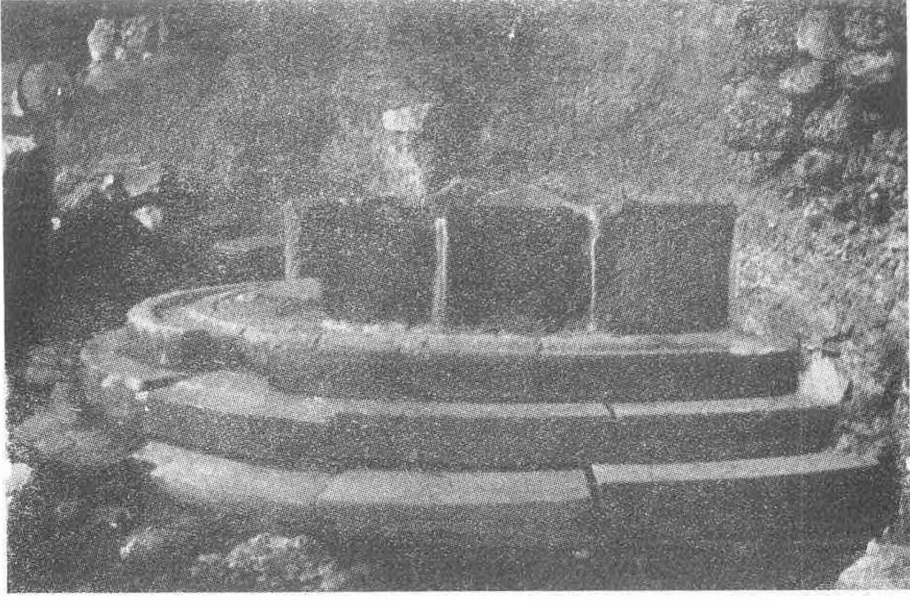
(Res: 11)



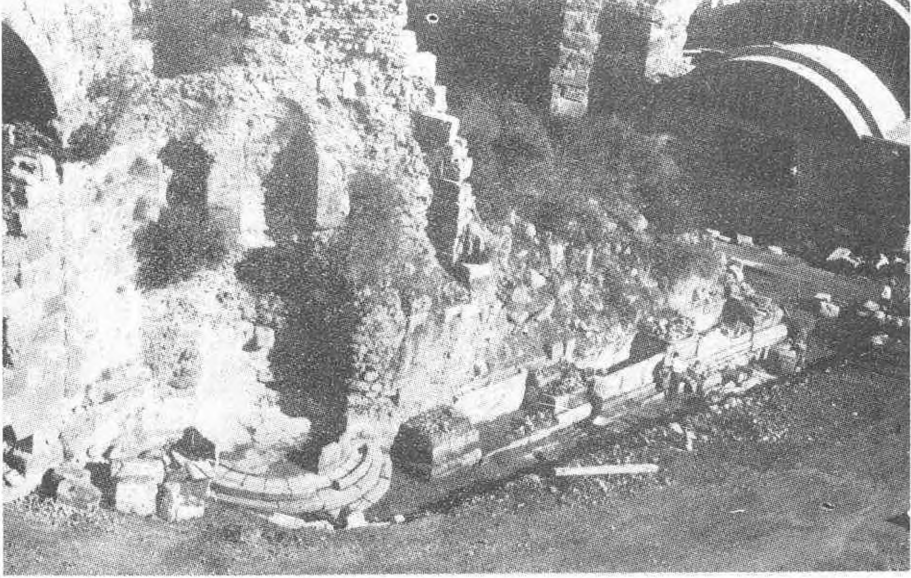
(Res: 12)



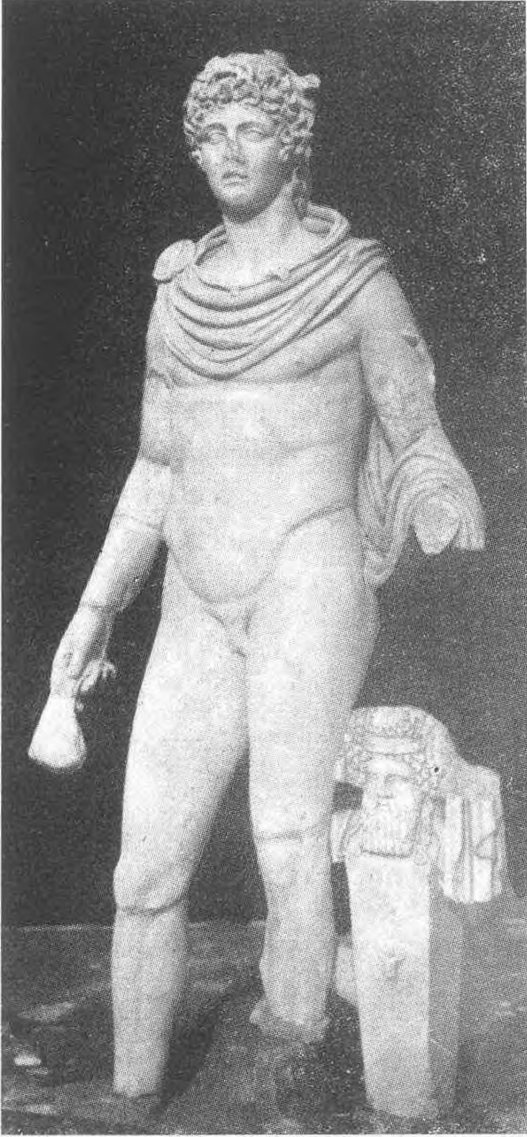
(Res: 13)



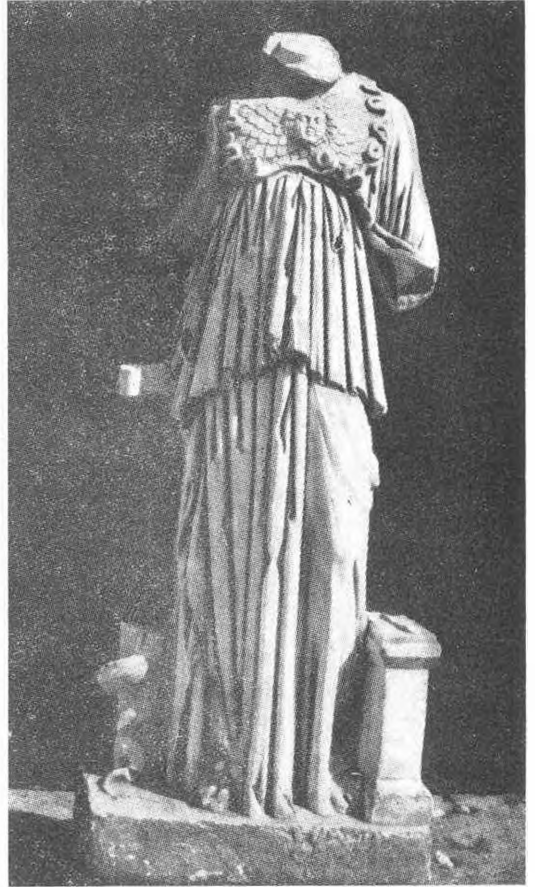
(Res: 14)



(Res: 15)



(Res: 16)



(Res: 17)





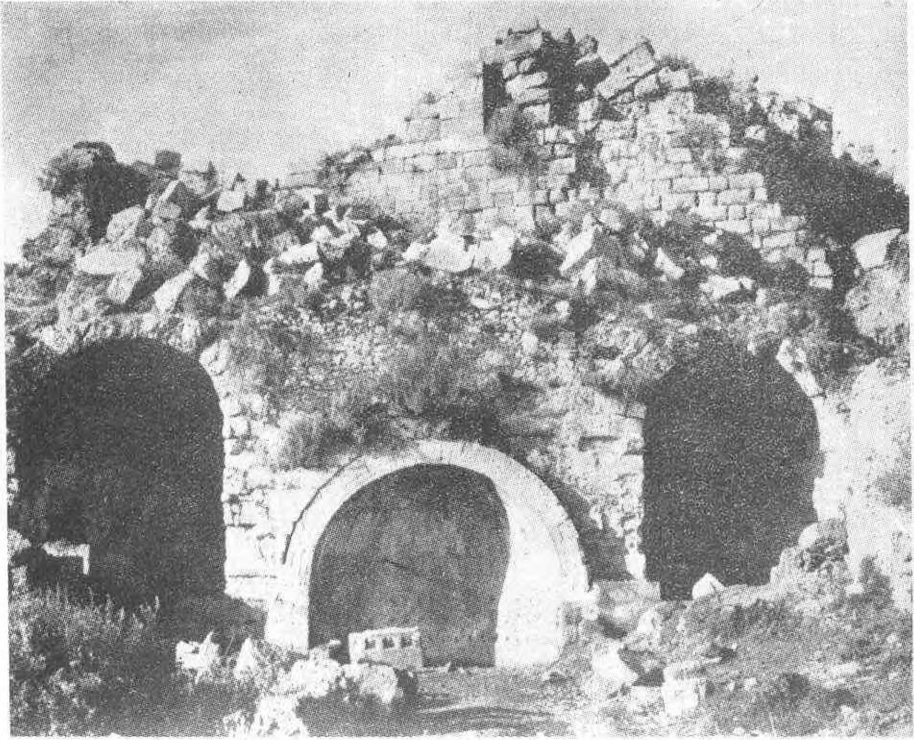
(Res: 18)



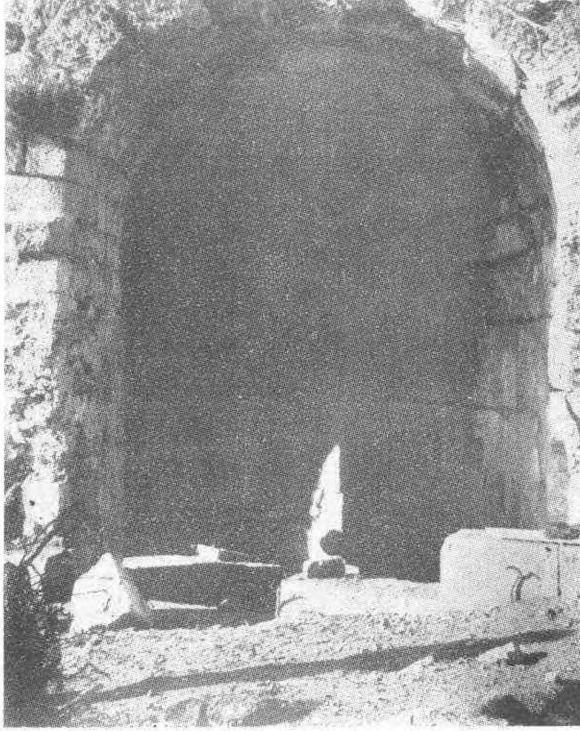
(Res: 19)



(Res: 20)



(Res: 21)



(Res: 22)



(Res: 23)



Photo: 1 Les deux autels et une exèdre



Photo: 2 — Le Grand autel (au premier plan) et le temple



Photo: 3 — Le péristyle Sud du temple d'Apollon et le grand autel

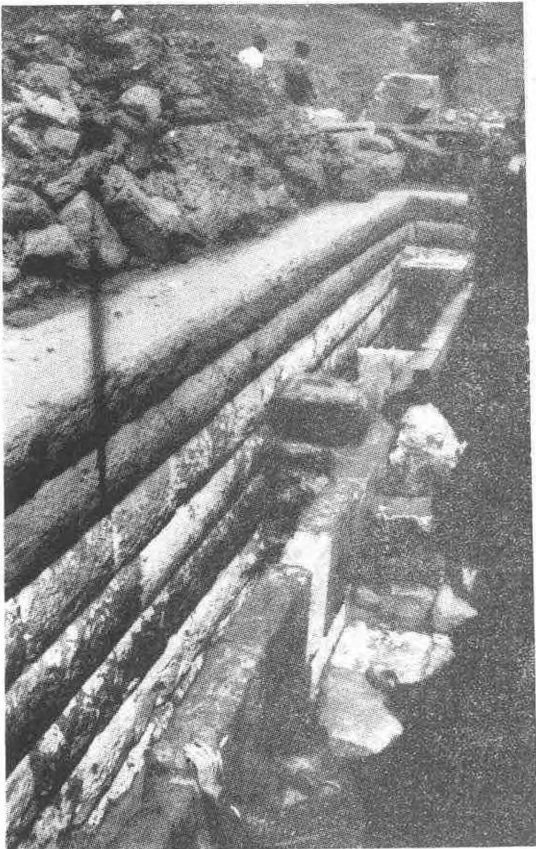


Photo: 4 — Etat antérieur du fond de l'adyton

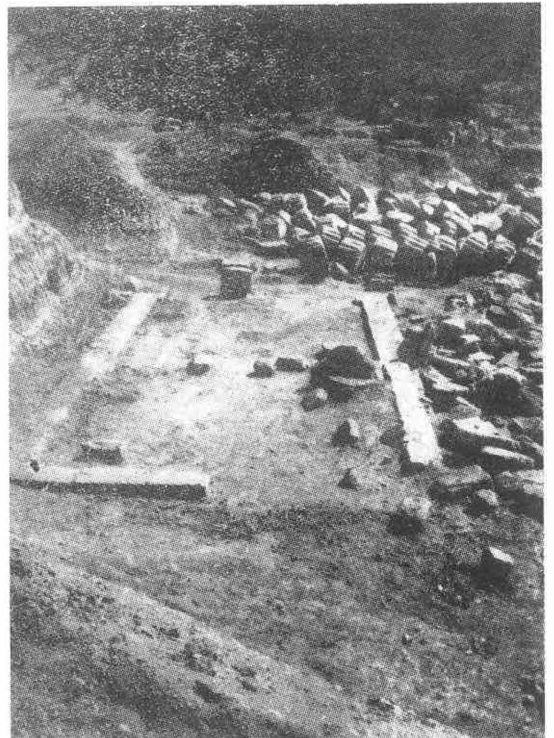


Photo: 5 — Le temple d'Artémis

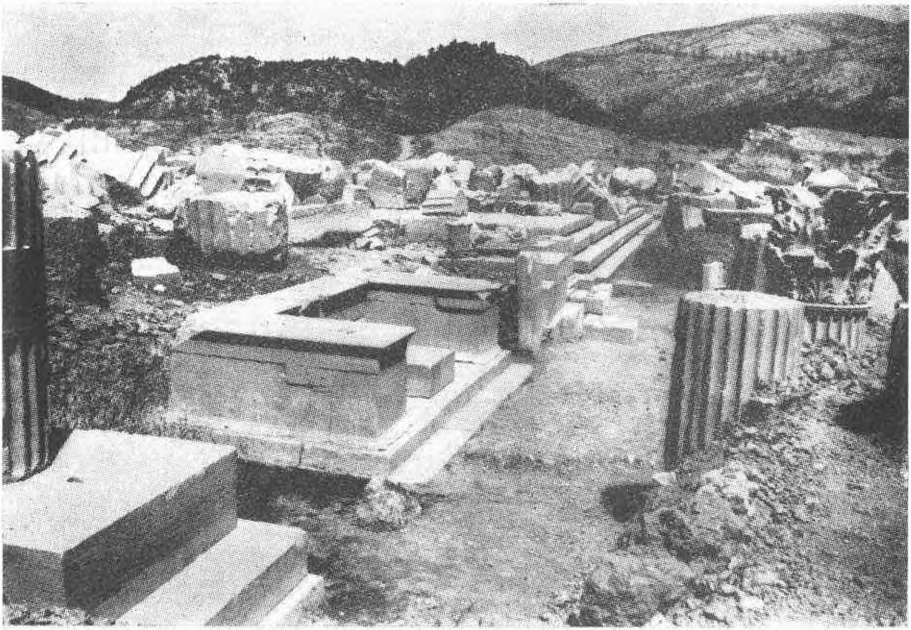


Photo: 6 — Bases et exèdre sur la Voie Sacrée

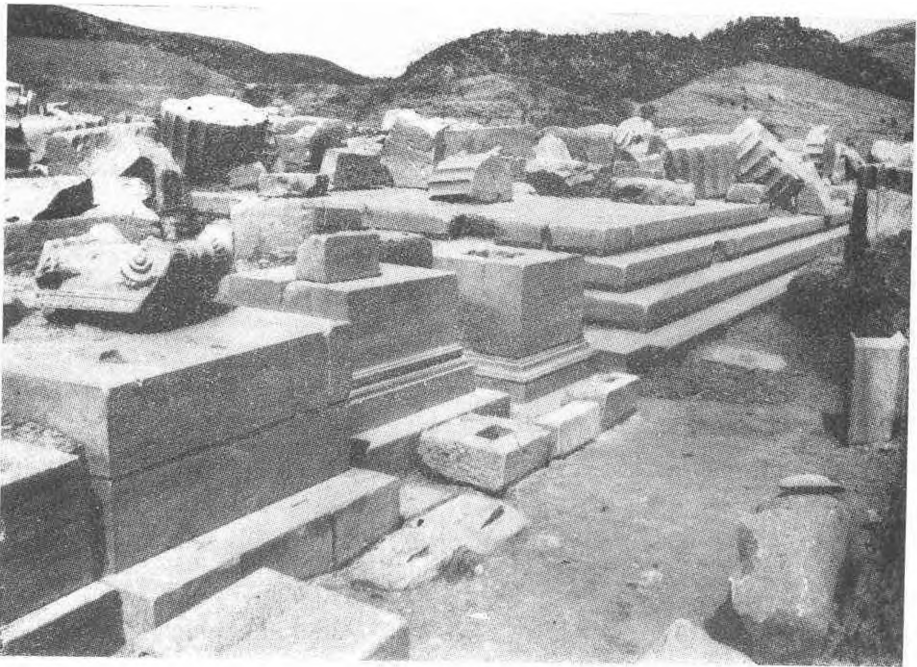


Photo: 7 — La Voie-sacrée et l'angle S. E. du temple

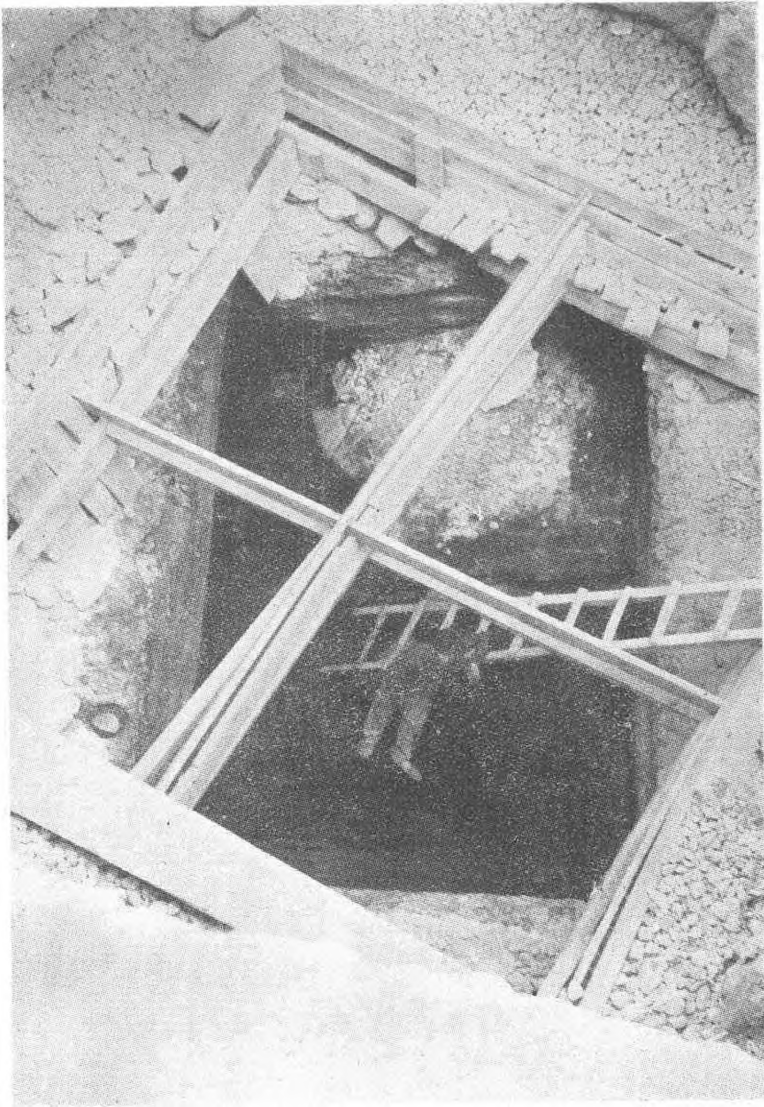


Fig: 1 — Tumulus W: the tomb from above, showing the collapsed roof, cleared

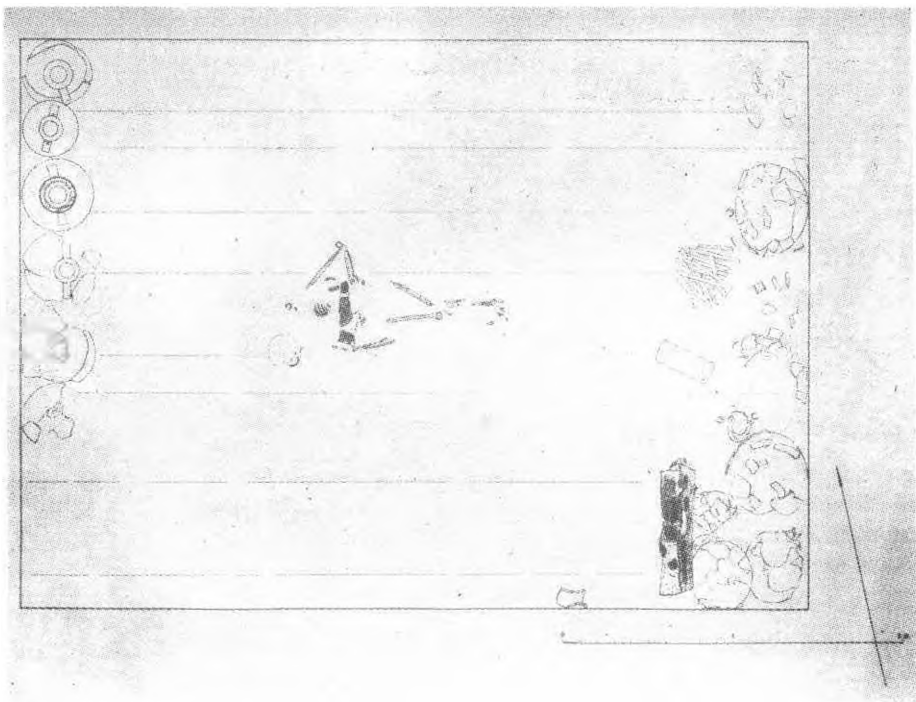


Fig: 2 — Plan showing the objects in Tumulus W burial as found



Fig: 3 — Painted pottery and bronze spouted jugs from Tumulus W.

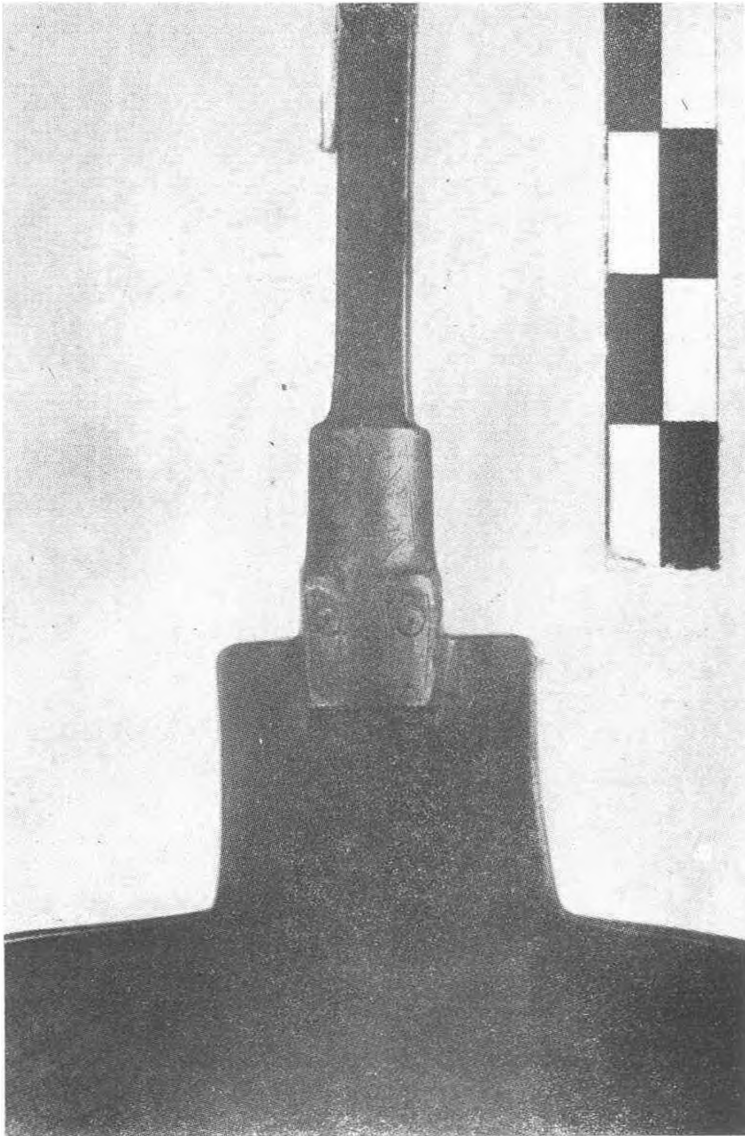


Fig: 4 — Handle-attachment of bronze ladle from Tumulus W.



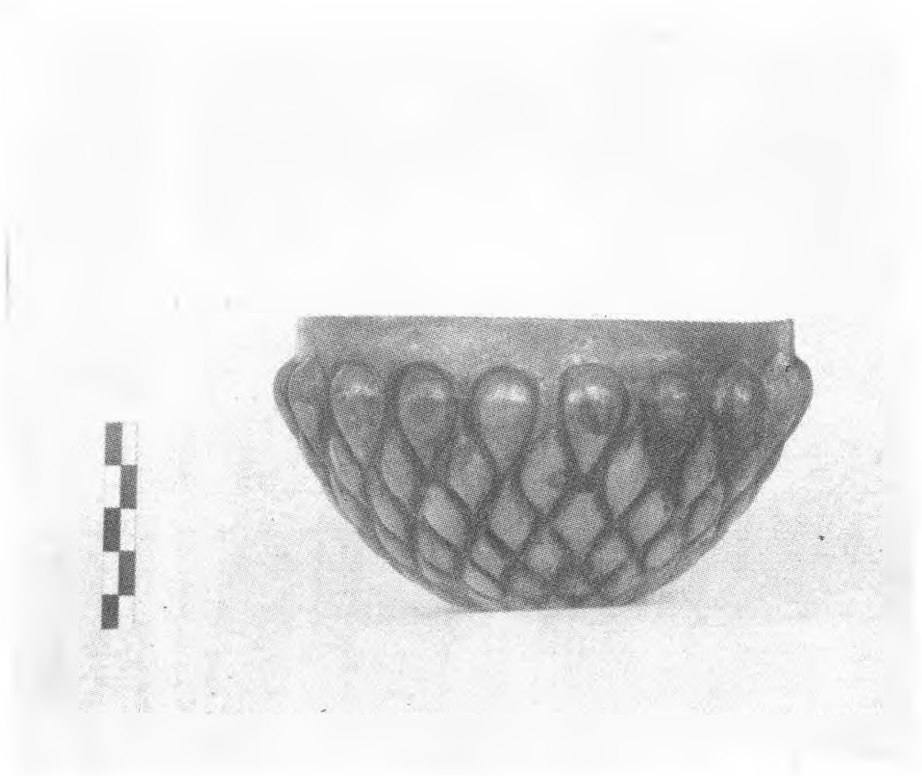


Fig: 5 — Bronze relief bowl from Tumulus W.

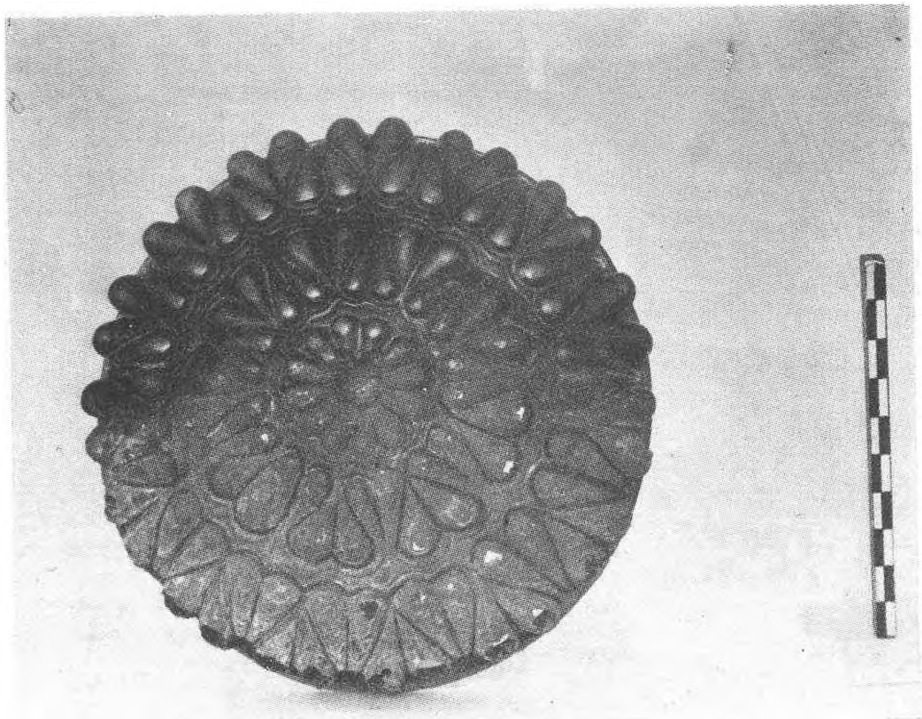


Fig: 6 — Bronze relief bowl from Tumulus W: outside



Fig: 7 — Entrance to Phrygian Gate and city wall to south, partly cleared

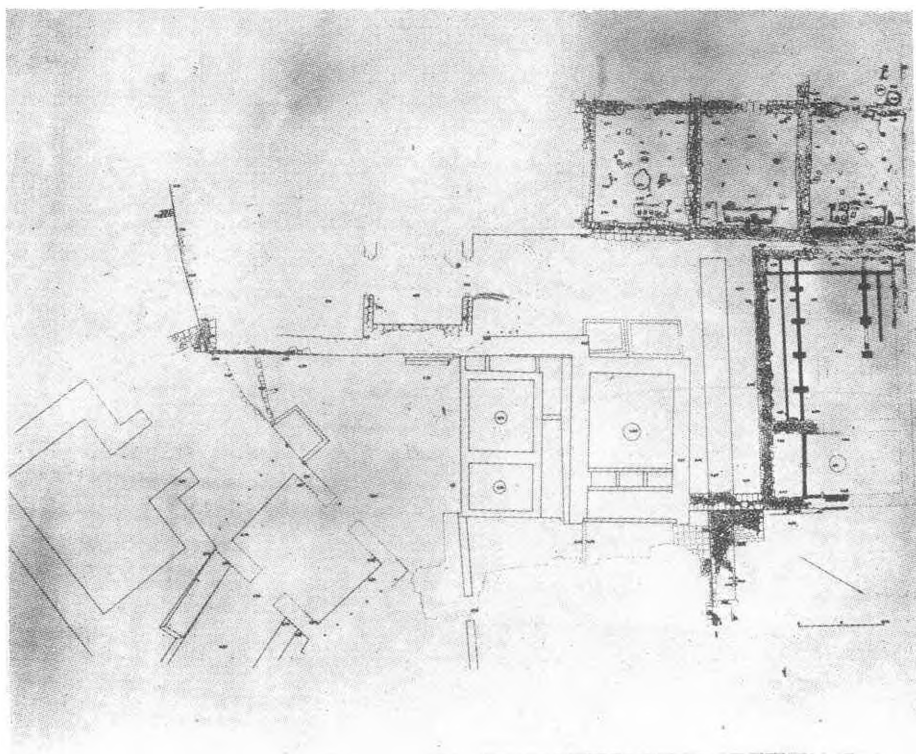


Fig: 8 — Plan of the Phrygian city. The parts excavated in 1959 in detail; earlier excavations in outline

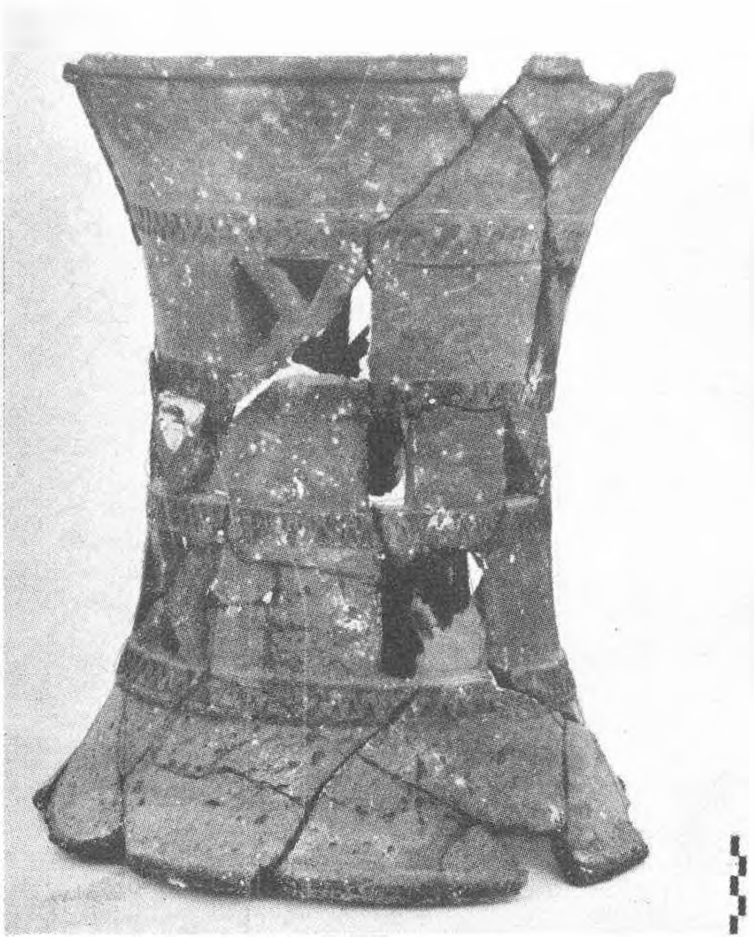


Fig: 9 — Coarse pot-stand with stamped and openwork decoration, from Megaron 3



Fig: 10 — Painted Phrygian krater from Megaron 3

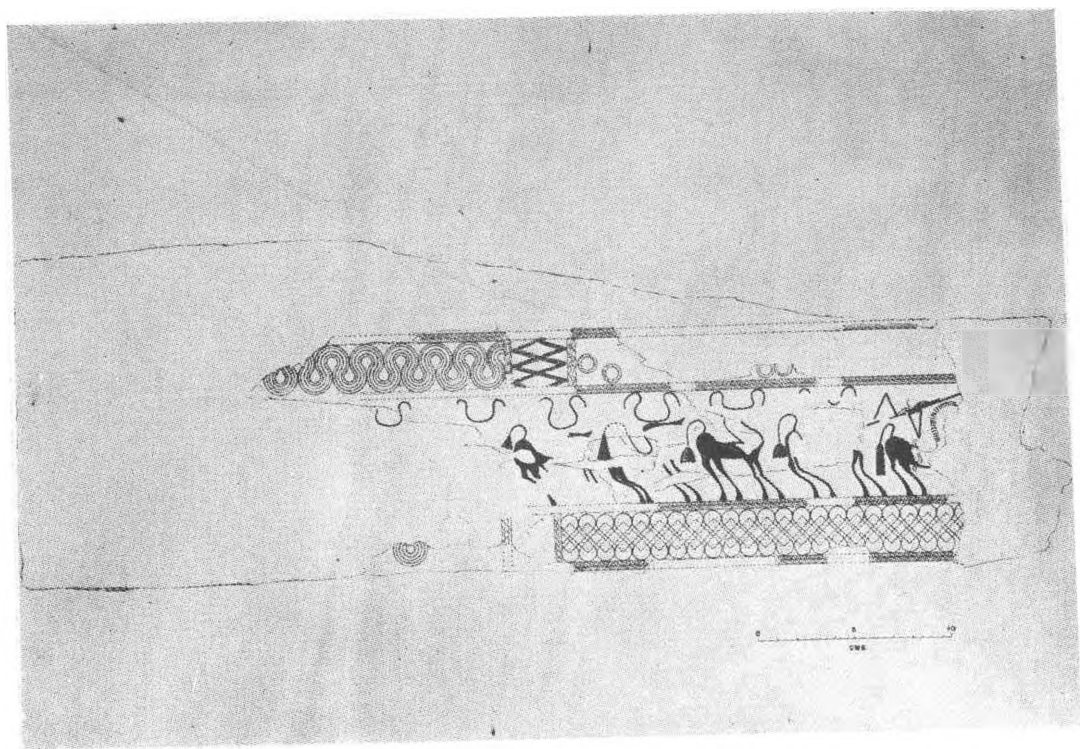


Fig: 11 — Fragment of furniture with relief carving: drawing by J. S. Last

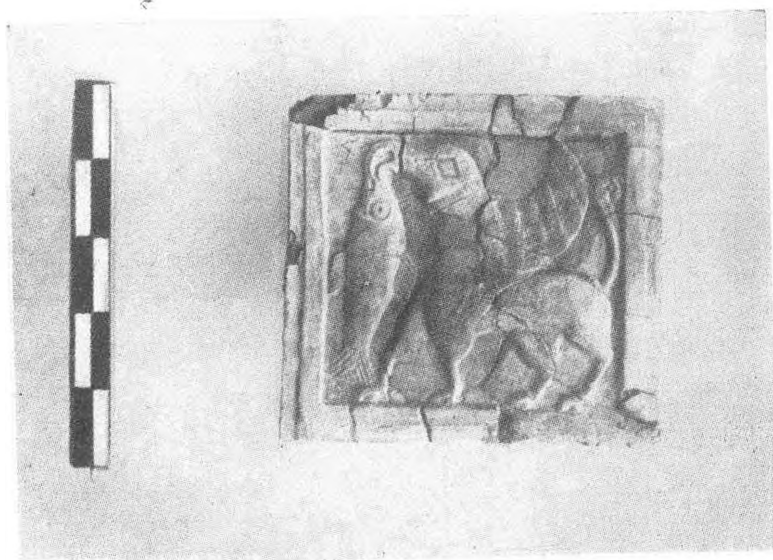
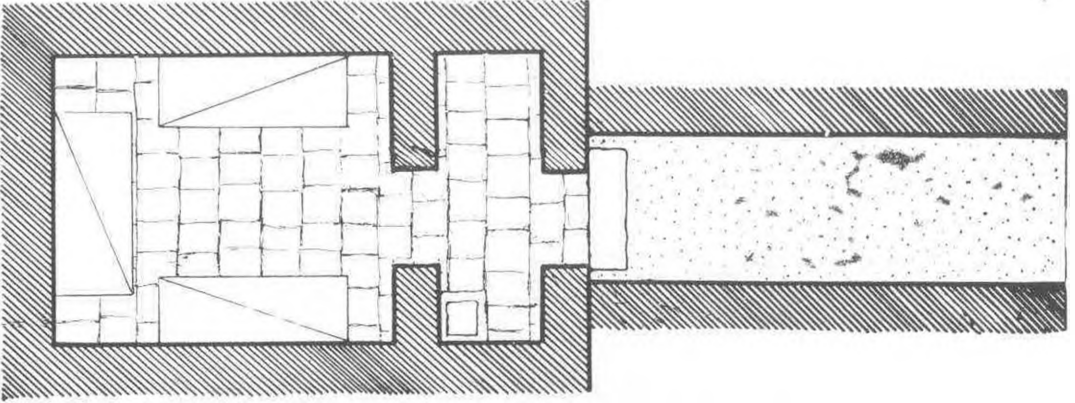


Fig: 12 — Carved ivory inlay plaque from furniture: Griffin and fish

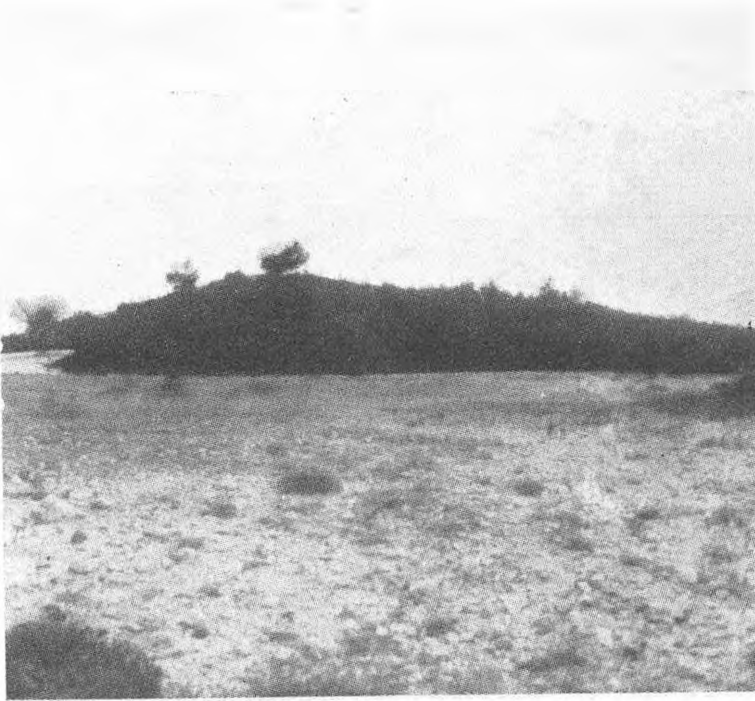
ESKİ DARDANOS ŞEHİRİ YAKININDAKİ TÜMÜLÜSÜN PLANI 1959



Ş. SUNARMAN



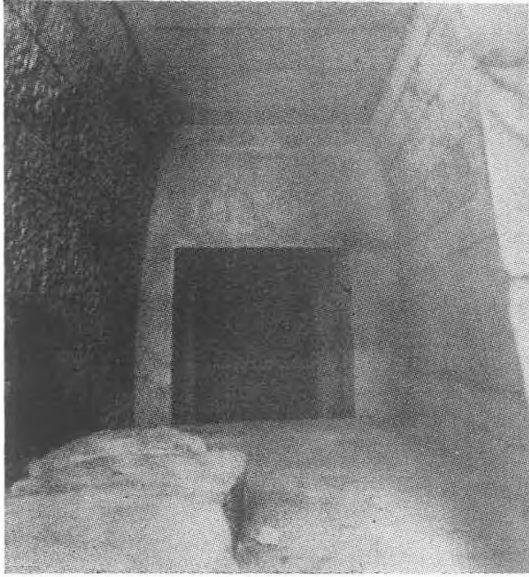
Res: 1 — Mezar anıtının plânı



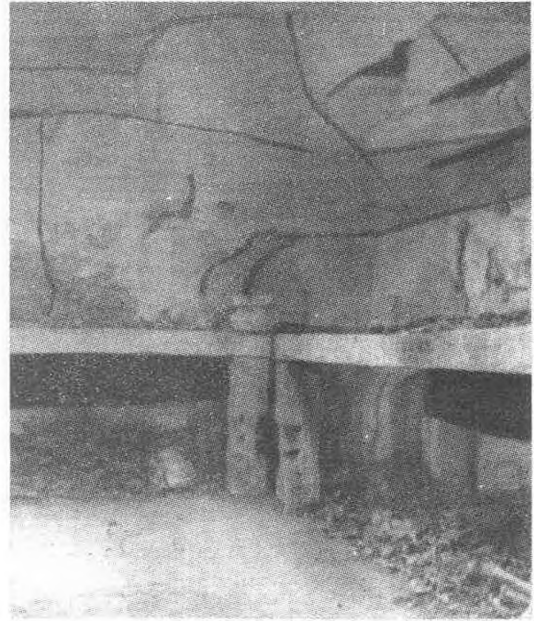
Res: 2 — Tümülüsün uzaktan görünüşü



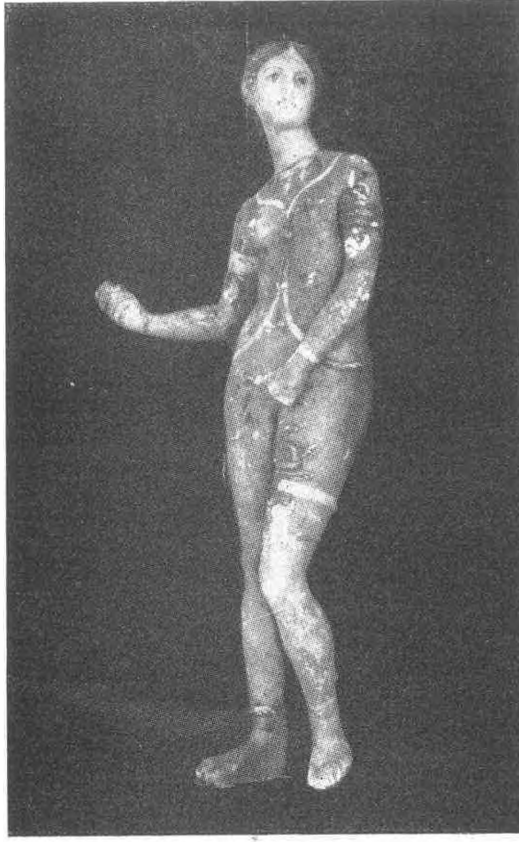
Res: 3 — Koridor'a giriş



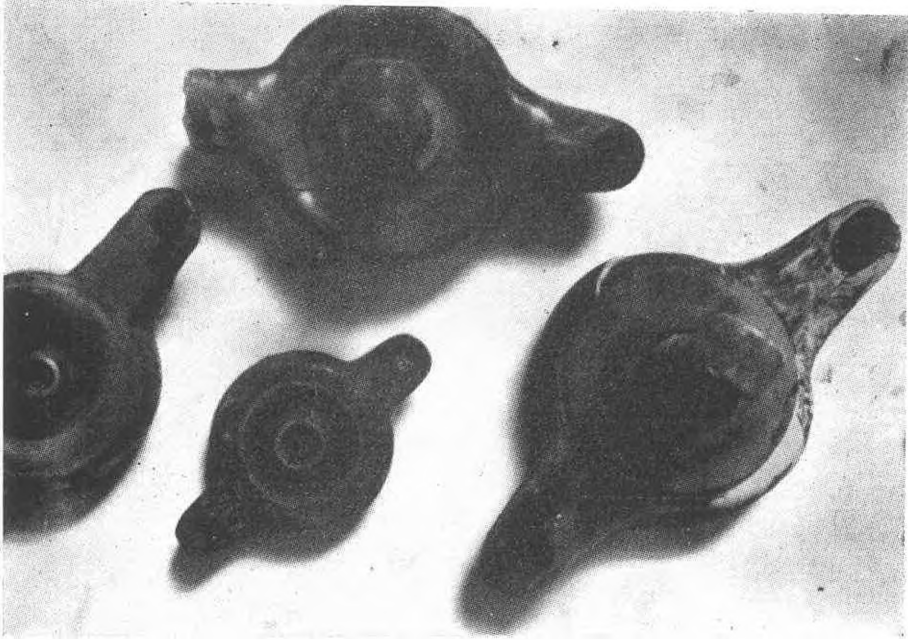
Res: 4 — Koridorun içi



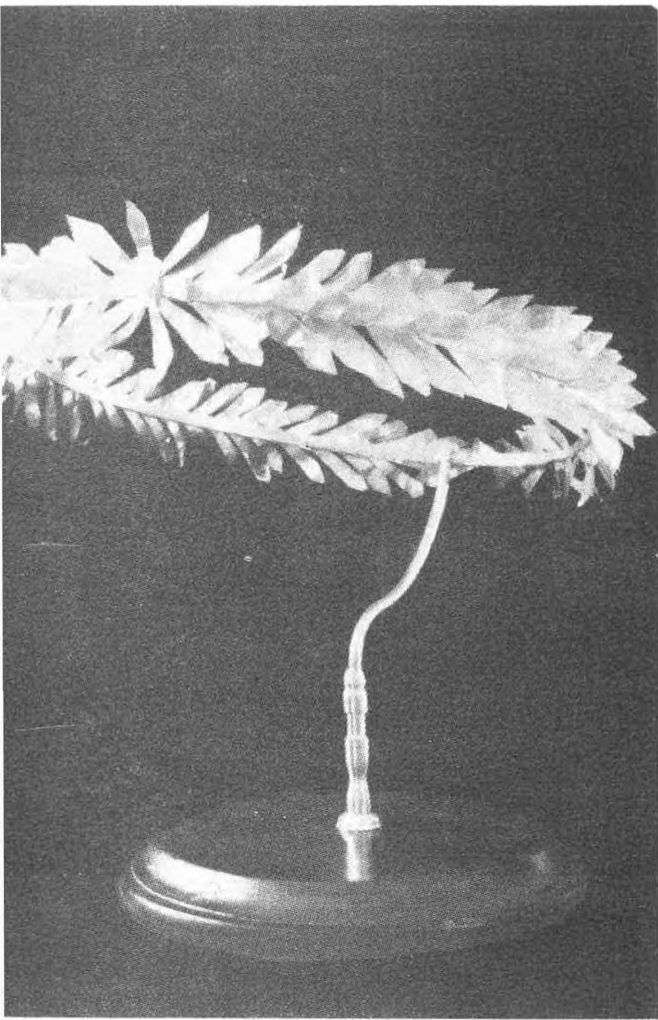
Res: 5 -- Mezar odasından bir köşe



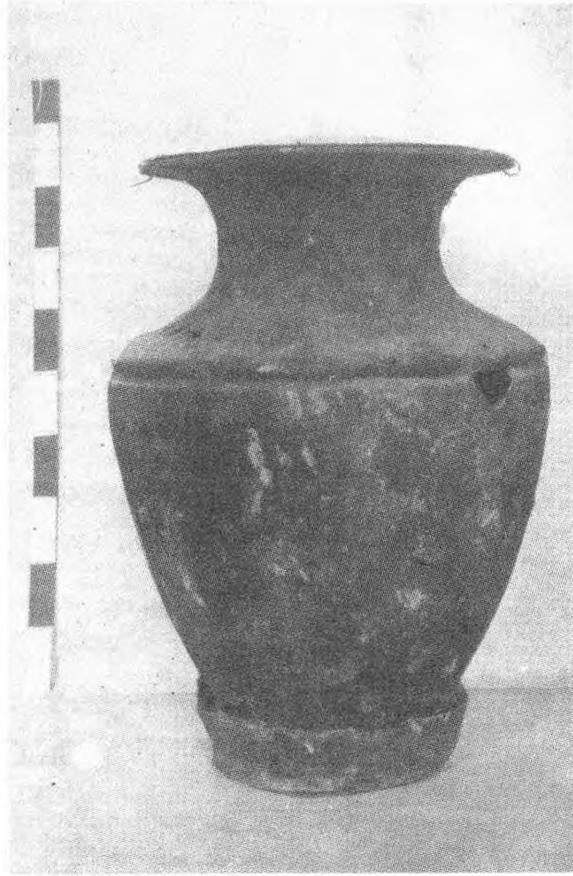
Res: 6 — Venüs heykelciği



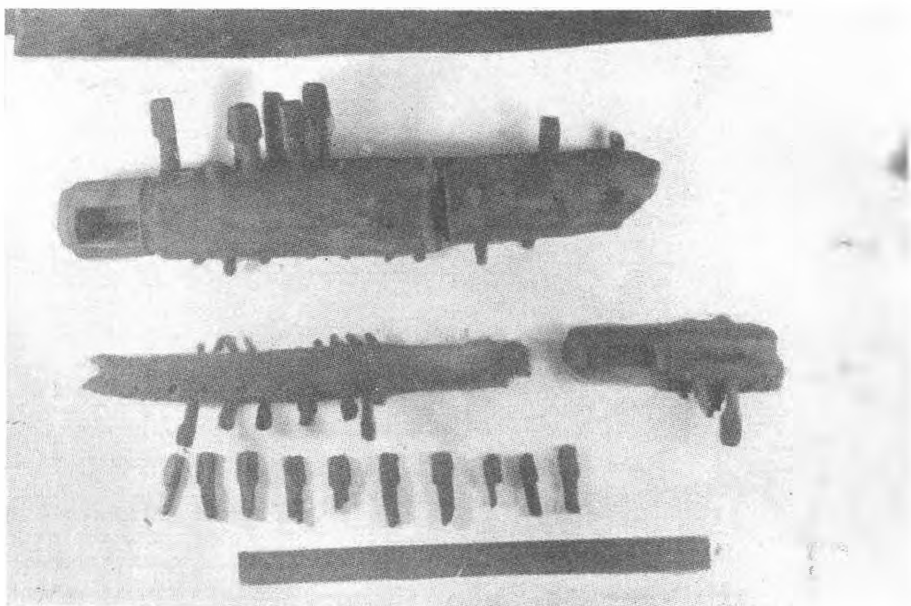
Res: 7 — Çeşitli kandiller



Res: 8 — Bir altın çelenk



Res: 9 — Bir madeni vazo



Res: 10 — Müzik âleti parçaları



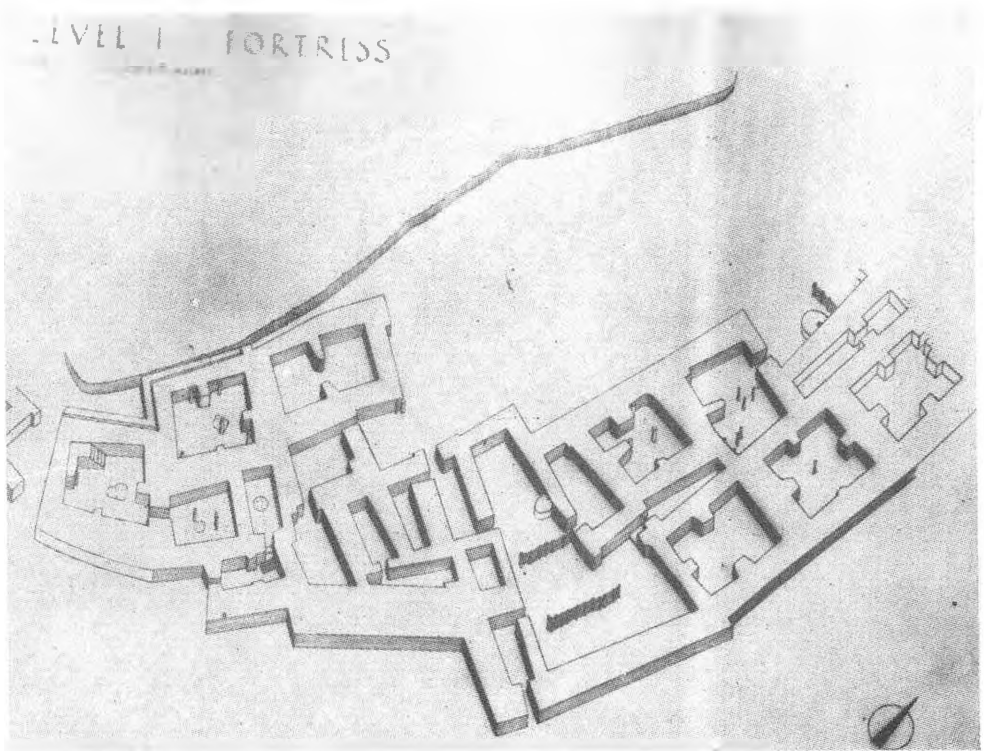


Fig: 1 — Isometric reconstruction of ground floor or basement of the Level I fortress at Hacilar



Fig: 2 — View from southeast towards group of rooms forming the north block in the Level I fortress at Hacilar

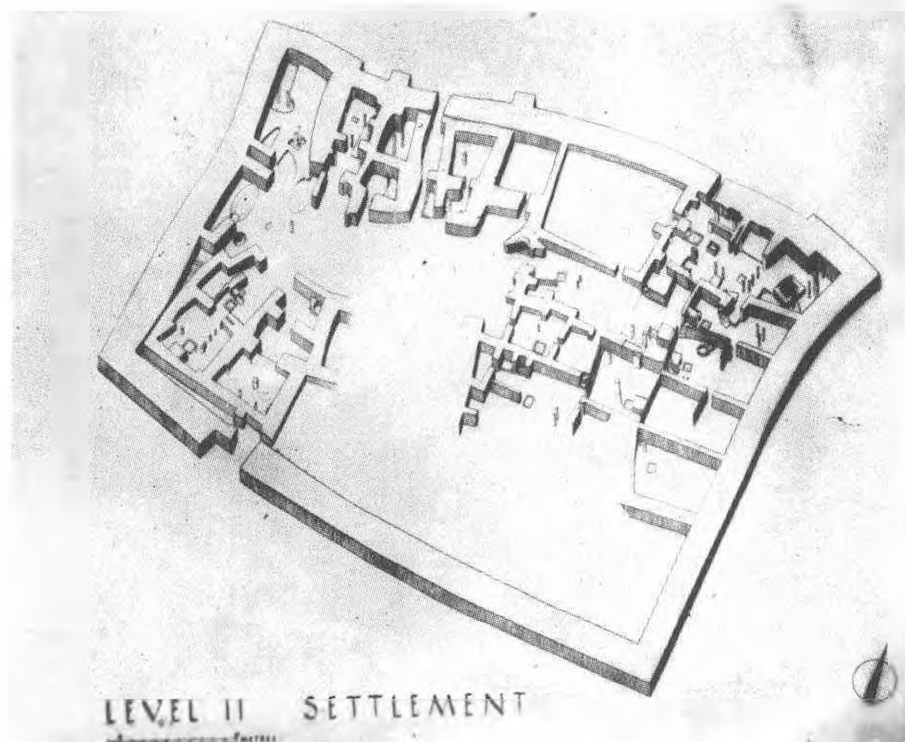


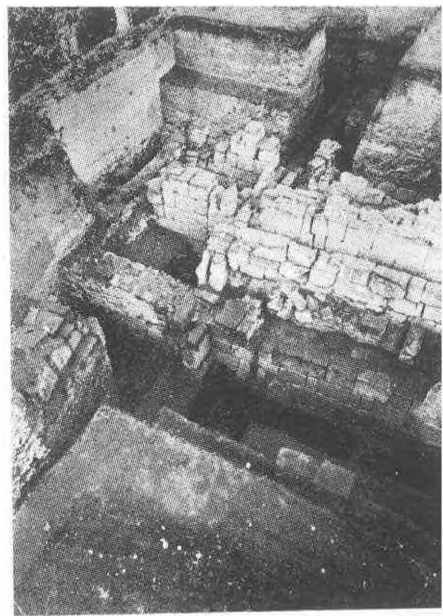
Fig: 3 — Isometric plan of the Level II settlement at Hacilar  
 (Wall of Southeast quarter restored, as this is  
 not yet excavated.)



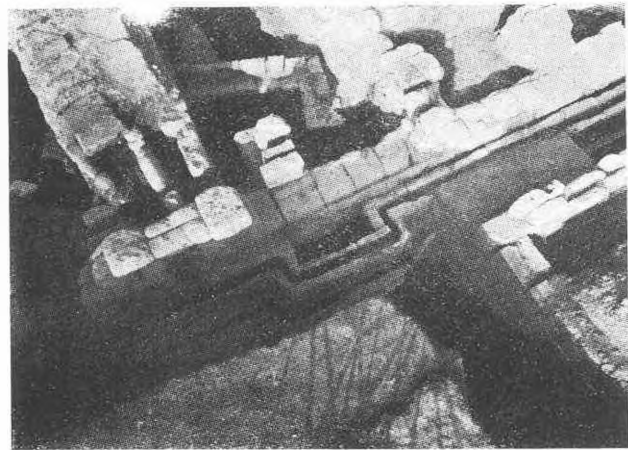
Fig: 4 — View of N. W. corner of Level II settlement, showing  
 entrance passage through outer wall (on the right).  
 Looking westward



(Abb: 1)



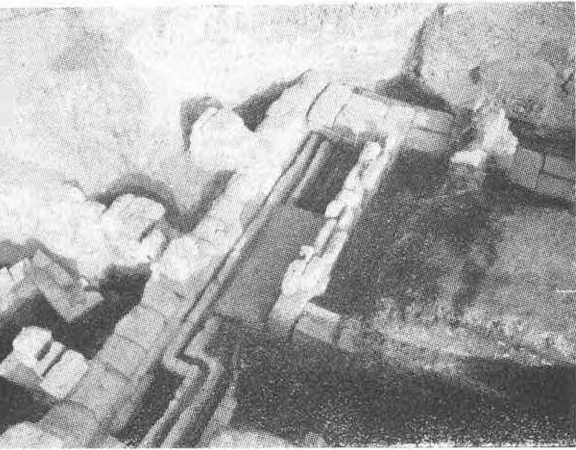
(Abb: 2)



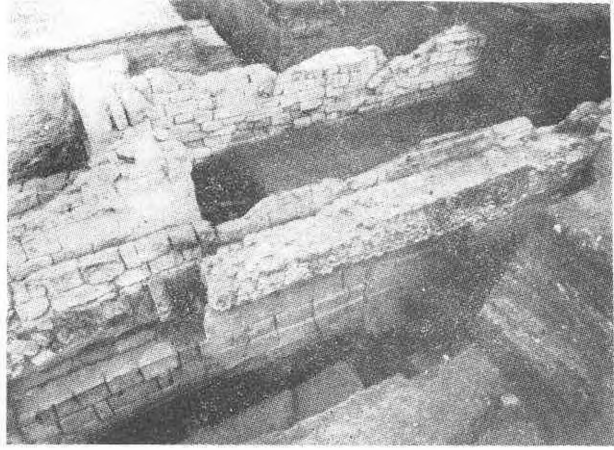
(Abb: 3)



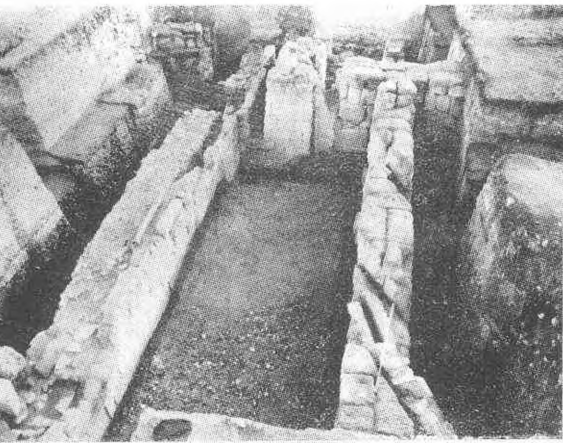
(Abb: 4)



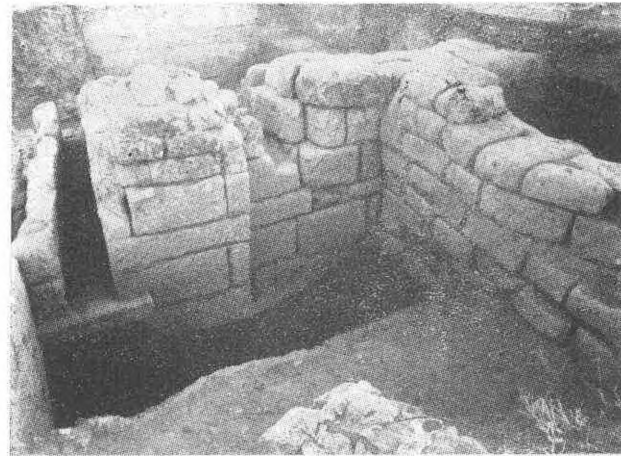
(Abb: 5)



(Abb: 6)



(Abb: 7)



(Abb: 8)

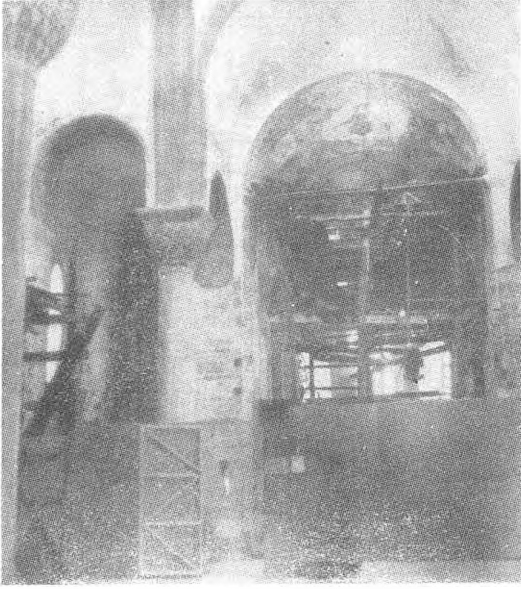


Fig: 1 — General view of the main apse

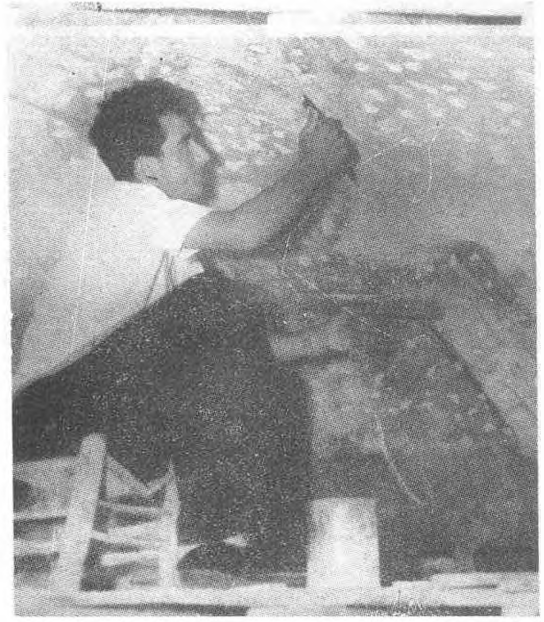


Fig: 2 — Mr Kemer at work replastering



Fig: 3 — Head of Saint Epiphanius.  
North East Window soffit of  
the main apse



Fig: 4 — Figure of Christ from the  
"ascension" scene



Fig: 5 — A>stylite Saint in the north doorway



Fig: 6 — A>border pattern from  
the South East Chapel