



Tomb of Rekhmire in Egypt, showing ingot being carried on Shoulder of a keftun

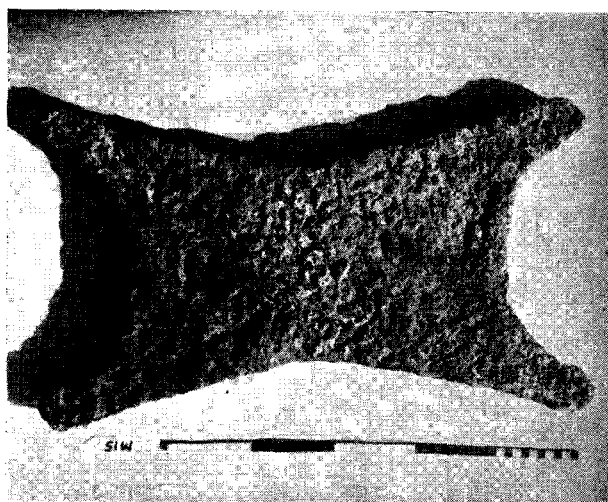


Fig. 1 — Copper ingot



Fig. 2 — Basket bottom



Fig. 3 — Double-axe.

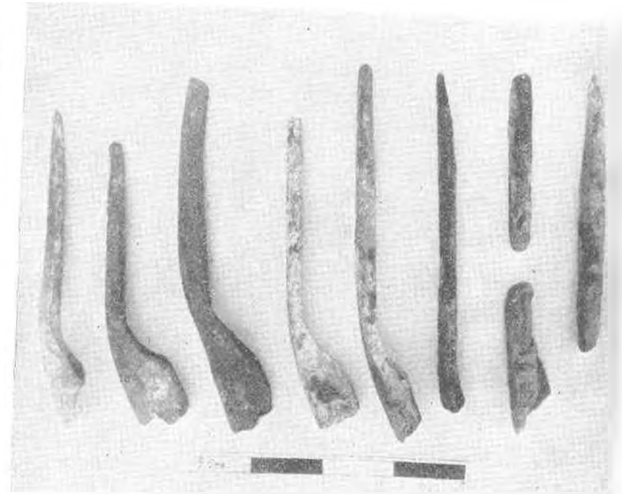


Fig. 4 — Some of the bronze pikes.

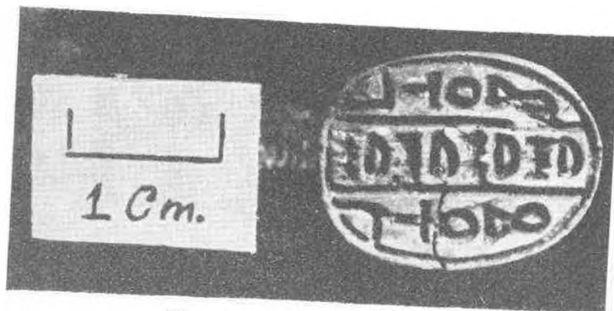


Fig. 5 — One of five scarabs.

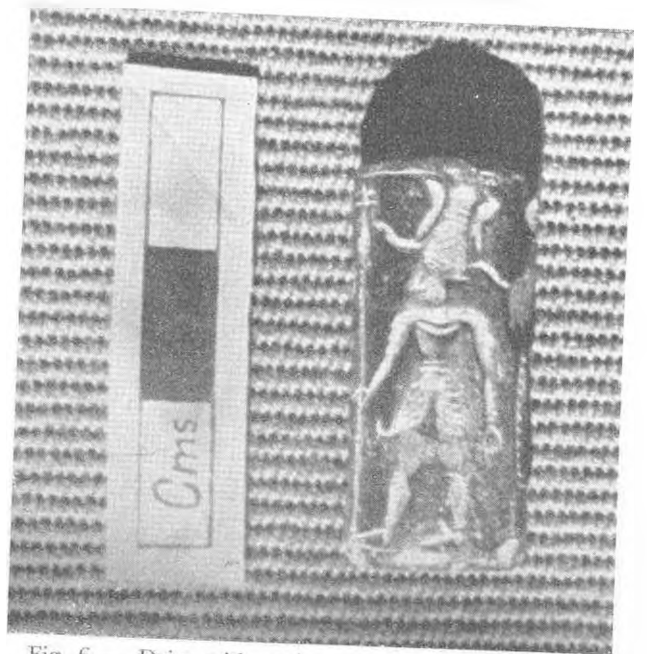


Fig. 6 — Deity with *atef* crown on cylinder seal.

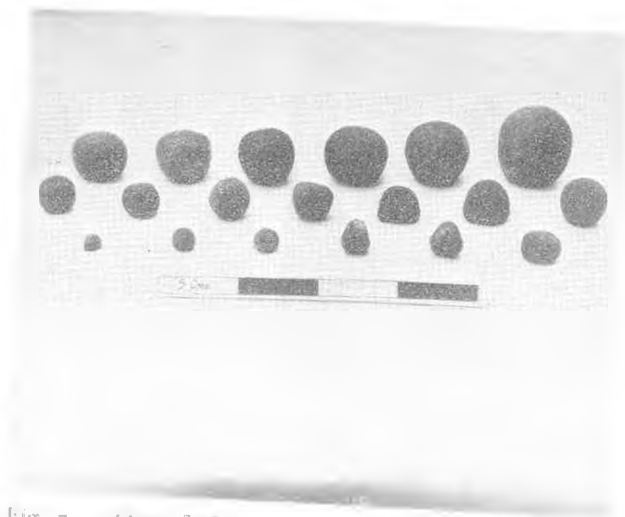


Fig. 7 — One of three sets of weights of different types.



Fig. 8 — Surveying the wreck



Fig. 9 — Peter Throckmorton photographing Claude Duthuit at work.



Fig. 10 — Raising lump of bronze objects, wrapped in a sheet to protect the basket which was attached to the bottom.



Fig. 11 — Frederic Dumas and Duthuit filling balloon with air to raise a lump of cargo.



Fig. 12 Placing objects in a wire basket for raising to surface.



Fig. 13 — A pile of ingots, cleaned on the beach, showing how they were stacked on the deck of the ancient ship.

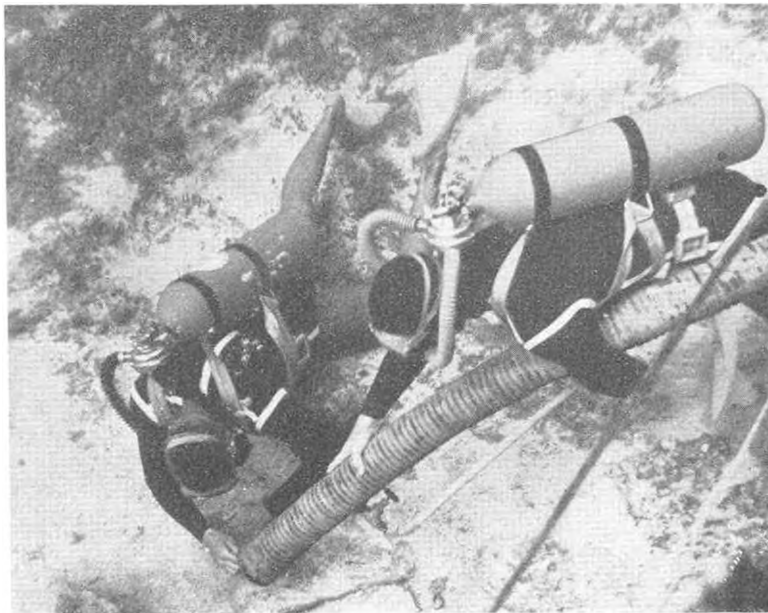


Fig. 14 — Using an air-lift to clean sand from near wreck.

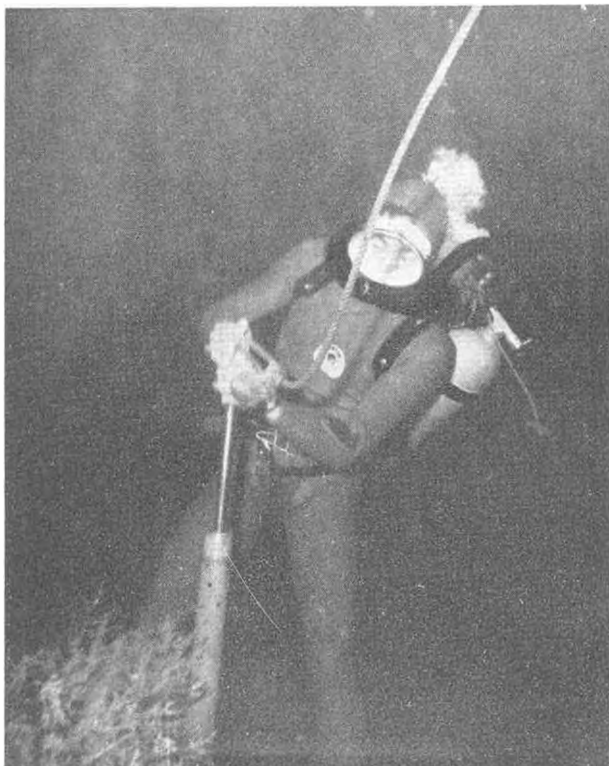


Fig. 15 — Rasim Diwanli using core-sampler on Yassi Ada wreck.



Abb. 1 — Grabung in L/18. Rechts "Haus am Hang", links "Altbau"



Abb. 2 — Grabung in M/18. "Haus der Riesenspithoi".



Abb. 3 — Hethitische Stierstatuette aus Serpentin.



Abb. 4 — Scherbe eines Obsidiangefasses mit Inschrift des Hyksos-Königs Chian.

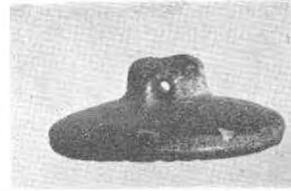
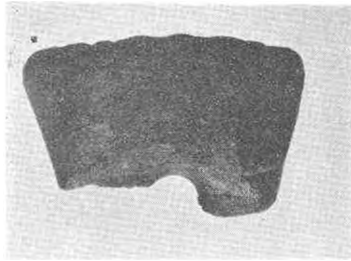


Abb. 5 — Zwei frühbronzezeitliche Stempelsiegel.



Abb. 6 — Rhyton in Löwenform. Zeit der assyr. Handelskolonien

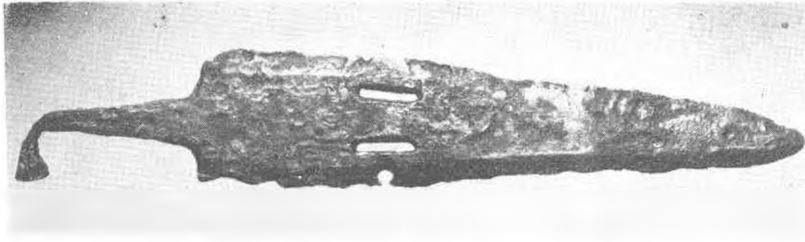


Abb. 7 — "Kyprischer Dolch". Zeit der assyr. Handelskolonien.



Abb. 8 — Gefäß der Alişar III - Ware.



Abb. 9 — Zwei frühbronzezeitliche Gefäße.

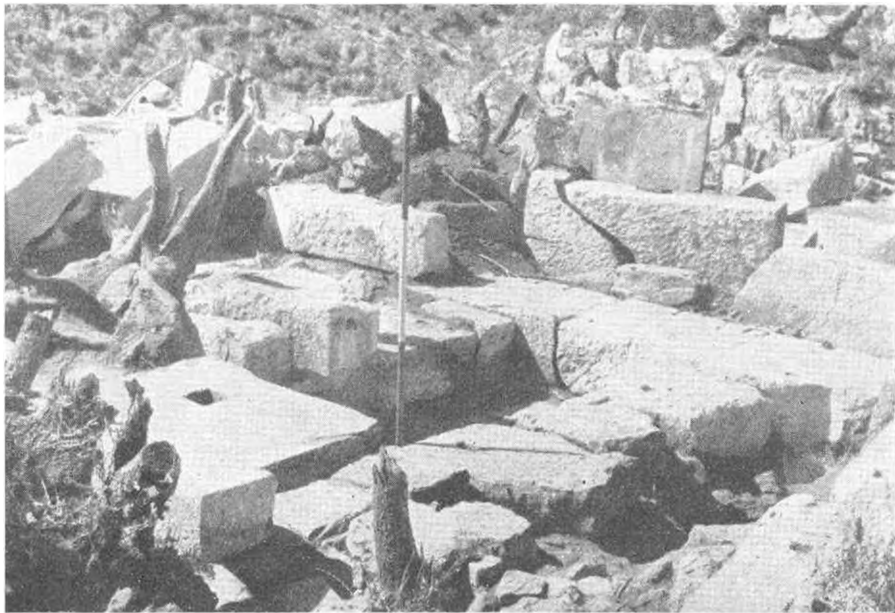


Fig. 1 — Pazarlık. Naikos At Backs of temple cella



Fig. 2 — Pazarlık. Rhodian Coins Faund under temple floor



Fig. 3 — Pazarlık. threshold of Earlier Building under temple Floor.



Fig. 4 — Pazarlık. Buildings on east of temple court.



Fig. 5 — Pazarlık Handle of vase stamped with name of goddess.

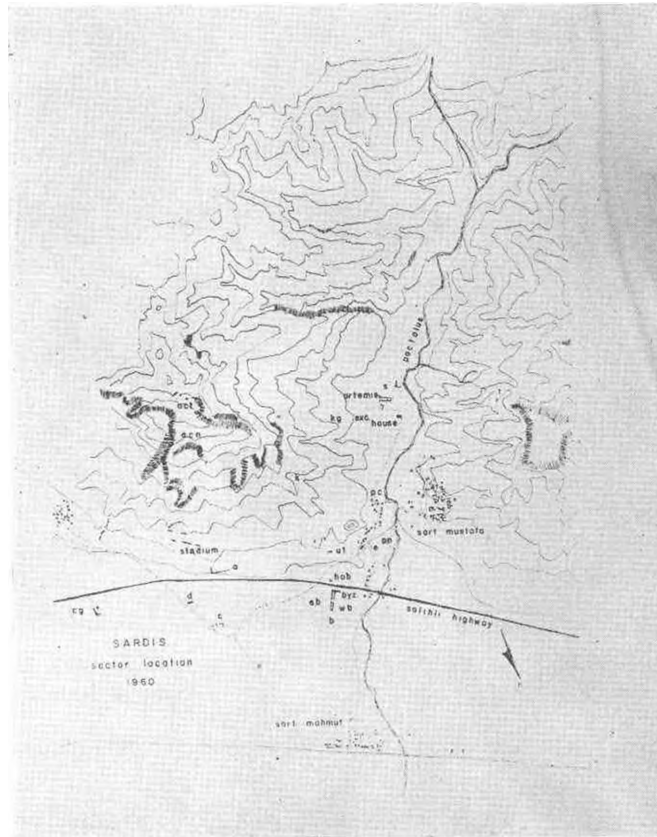


Fig. 1 — Sketch Map of Sardis Showing Location of Sectors, 1958 - 1960.

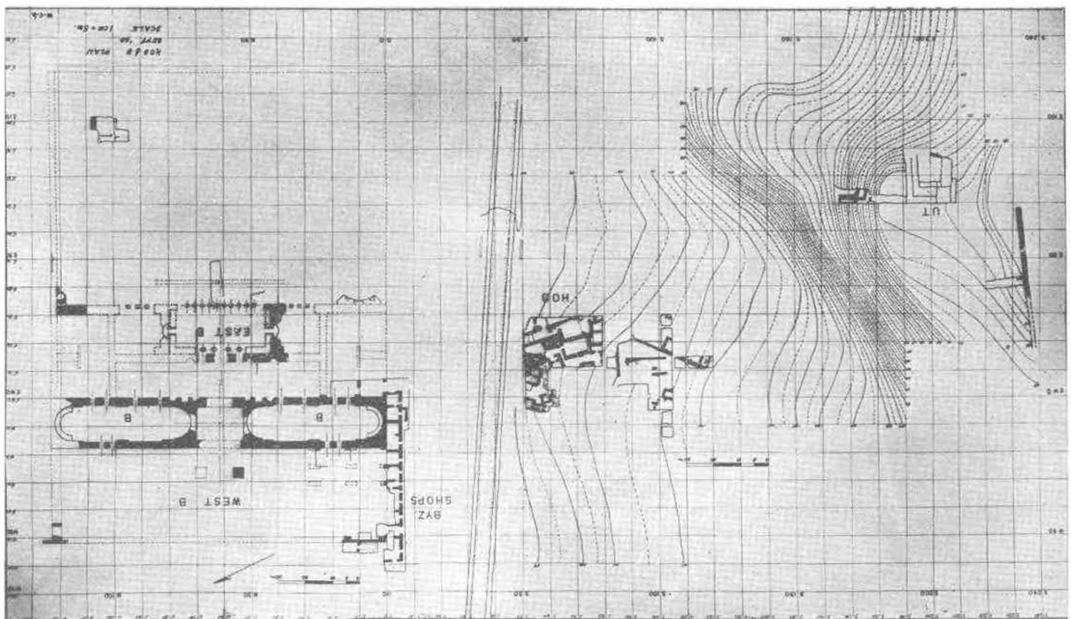


Fig. 2 — Plan of Sectors UT, HoB, and B, 1960.

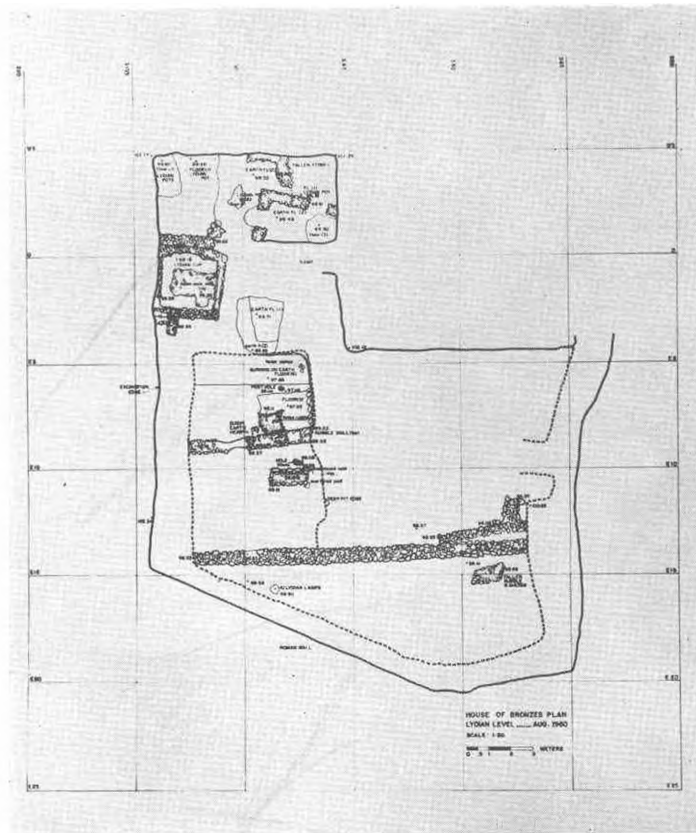


Fig. 3 — Plan of Lydian Levels in Sector HoB, 1960.



Fig. 4 — Lydian Lamps *in situ*, Sector HoB

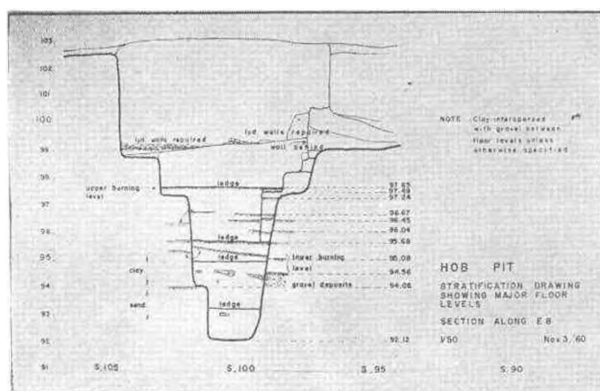


Fig. 5 — Stratification of Sounding, Sector HoB, 1960.

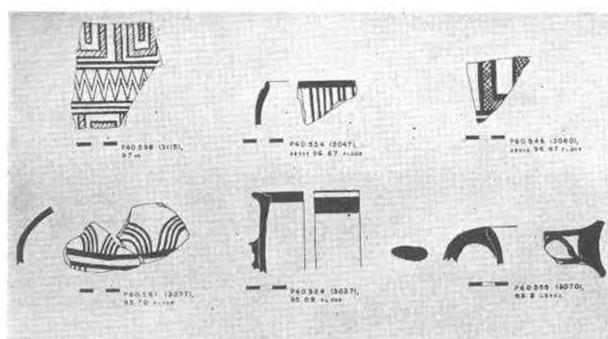


Fig. 6 — Greek Geometric and Mycenaean Pottery from Sounding in Sector HoB, 1960



Fig. 7 — Anatolian Painted Sherd from "Lower Burning" level, Sounding in Sector HoB, 1960.

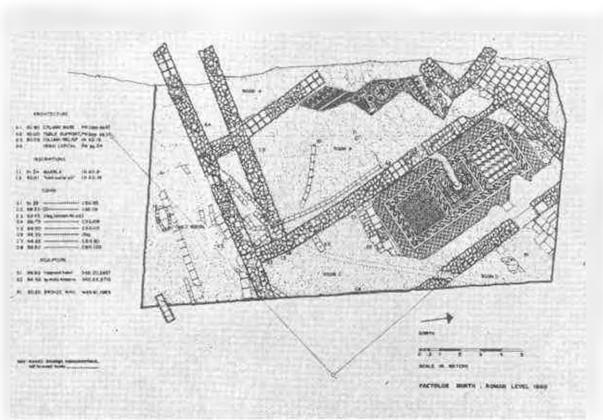


Fig. 8 — Plan of Late Roman Structures in Sector Pn, 1960.

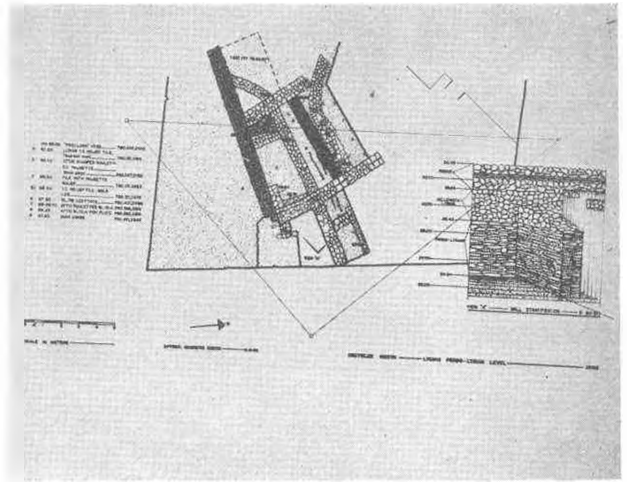


Fig. 9 — Plan and Detail of Superposed Walls in Sector Pn, Hellenistic? and Persian Periods, 1960.



Fig. 10 — Apsidal Structures of the Persian Period, View from West, Sector Pn.



Fig. 11 — Painted Terracotta Relief from Sector Pn.



Fig. 12 Fikellura Vase from Sector Pn.

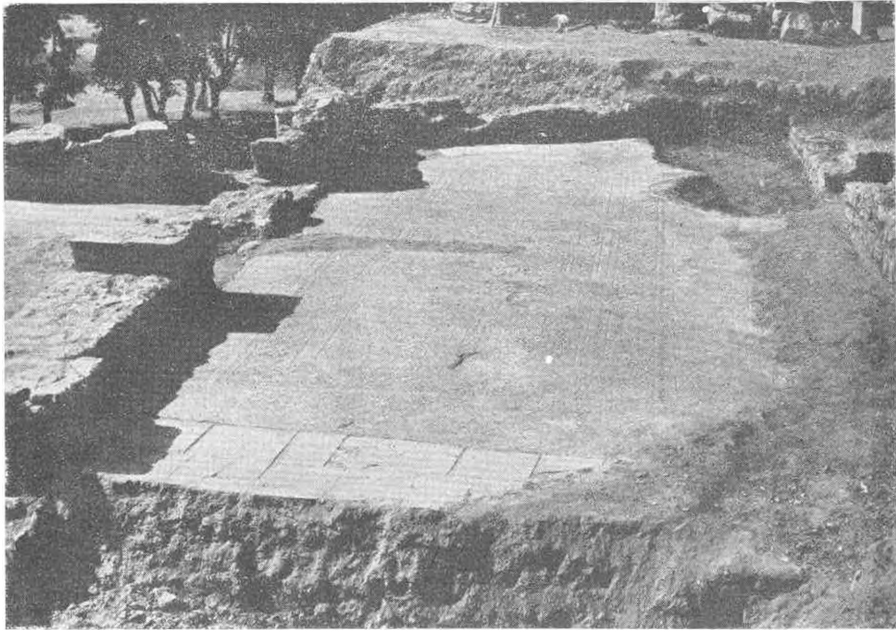


Fig. 13 — Mosaic Floor in Room C, Sector Pn.



Fig. 14 Terracotta Figurine of Venus, Roman Grave, Sector Pc.



Fig. 15 — Terracotta Figurine of Woman on Mule, Roman Grave, Sector Pc.

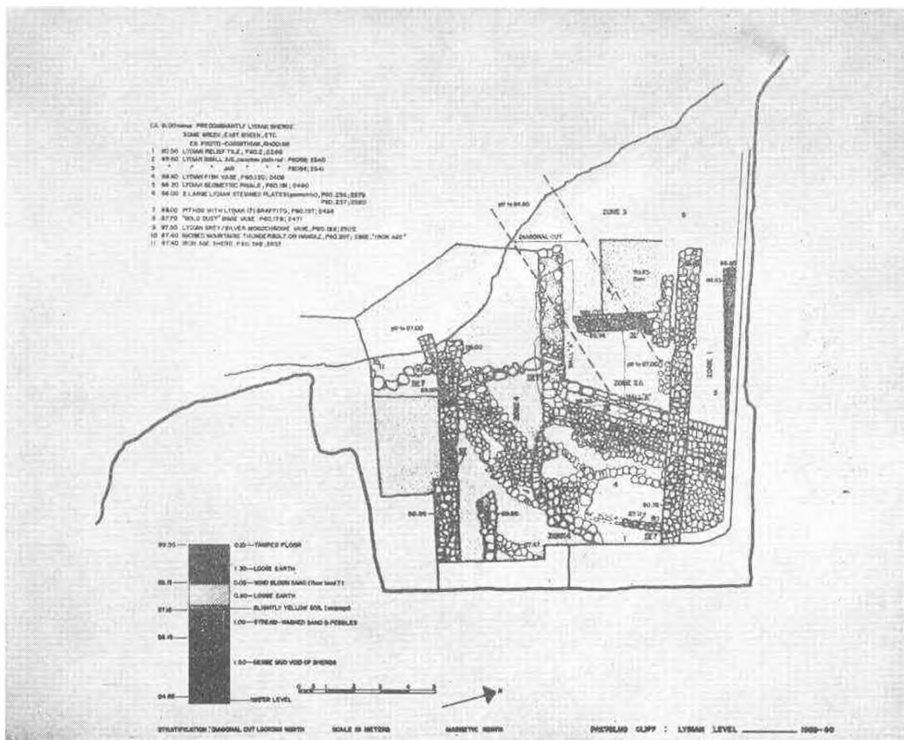


Fig. 16 — Plan of Lydian Levels in Sector Pc. 1960



Fig. 17 — Greek Geometric Pottery, Level III, Pc.

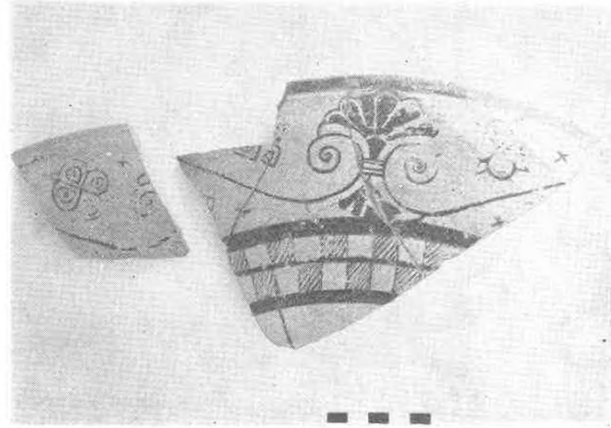


Fig. 18 — Greek Orientalizing Sherds, under floor, Level II, Sector Pc.

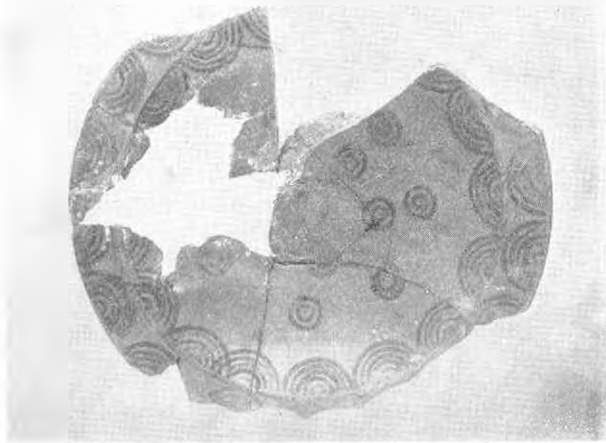


Fig. 19 — Luvian Black-on-Red Plate with Protogeometric Designs, Level III, Pc.

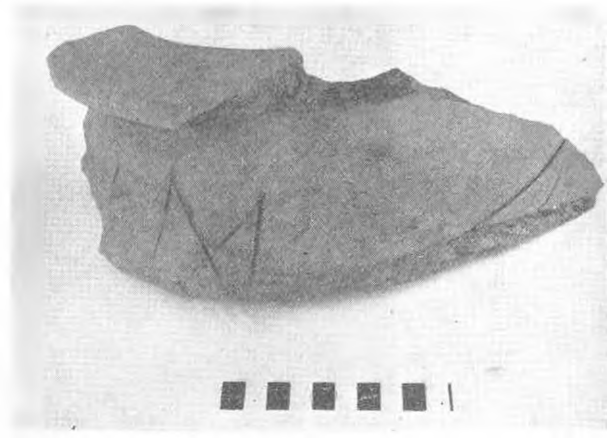


Fig. 20 — Pithos Rim with Two Incised Signs, Level III, Sector Pc.

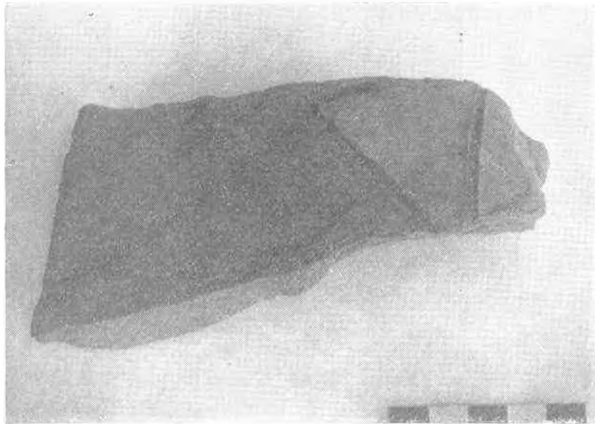


Fig. 21 — Pithos Rim with Incised "Arrow" Sign, Level III, Sector Pc.



Fig. 22 — Sherd with Meander and Triangles from Level IV? Sector Pc.

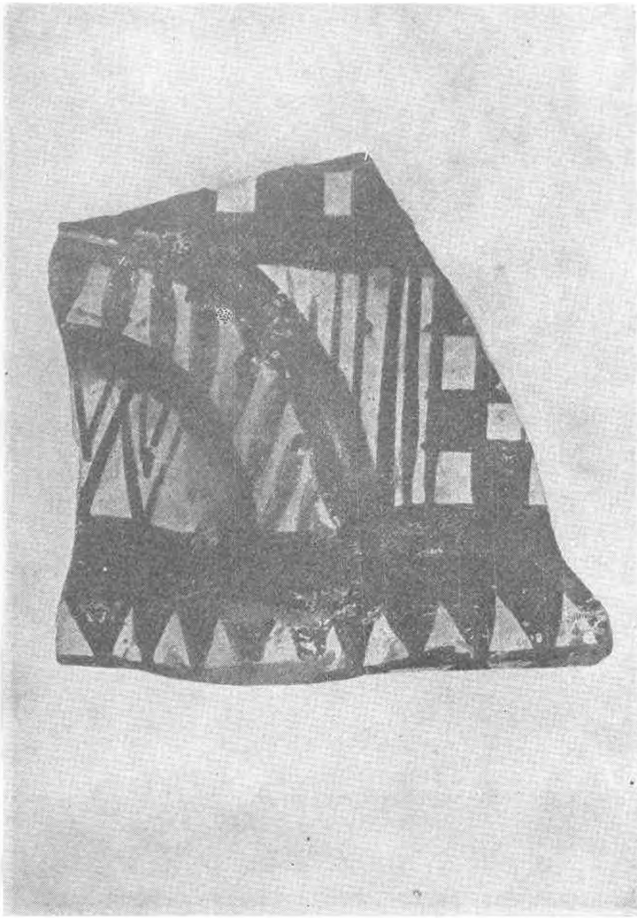


Fig. 23 — Crater Sherd with Checkerboard from Level IV, Sector Pc.

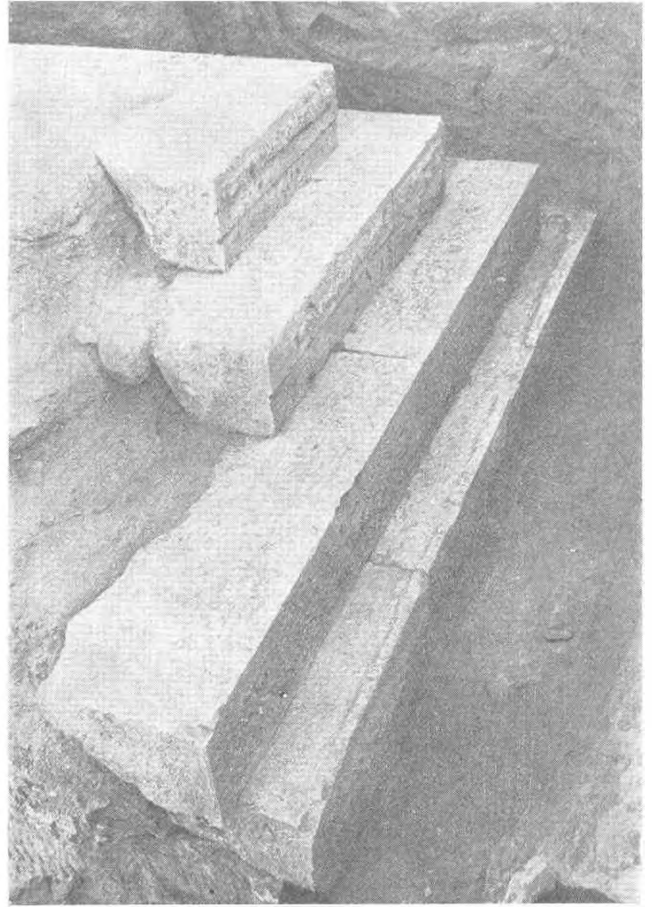


Fig. 24 — Southwest Corner of "Pyramid Tomb", 1960

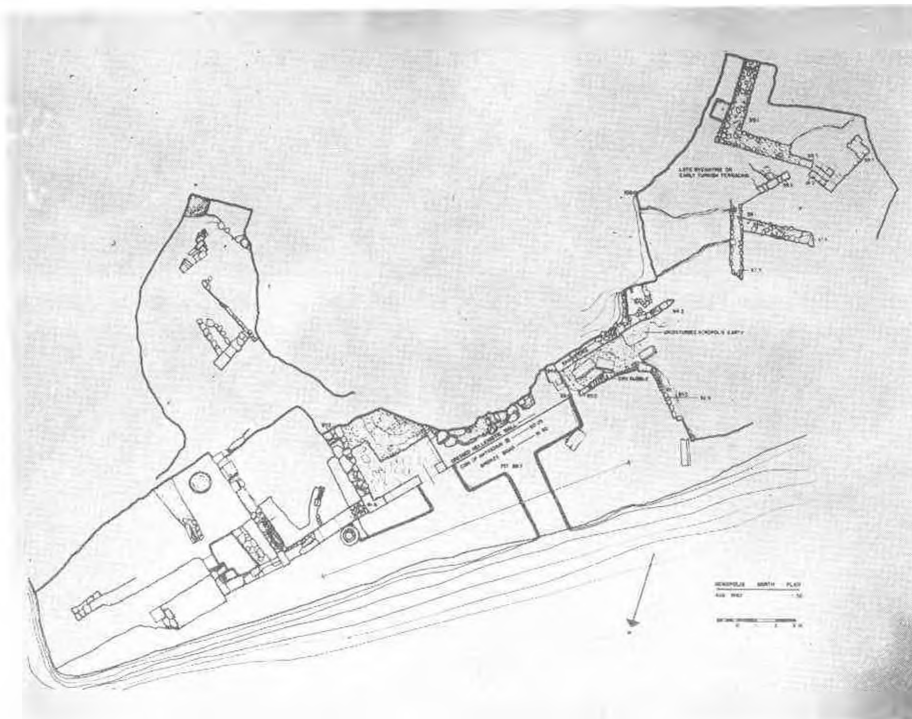


Fig. 25 — Plan of Excavations in Sector AcN, 1960



Fig. 26 — Archaic Bronze Relief of A Boar, Sector AcN. L. 0.08 m.

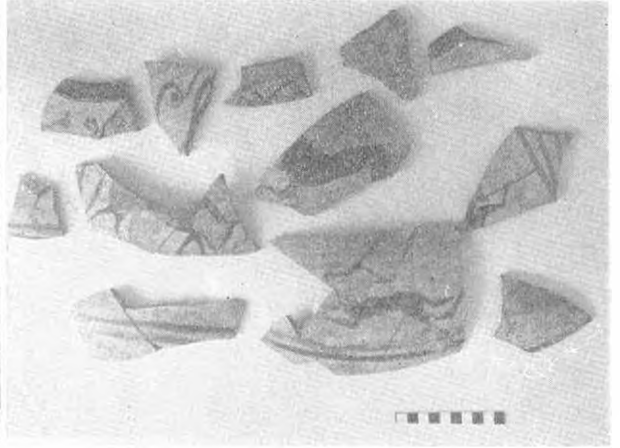


Fig. 27 — Subgeometric Fragments with Lion, Bull, Hunter, Sector AcT.



Fig. 28 — Part of Bichrome Plaque with Bird and Animals.

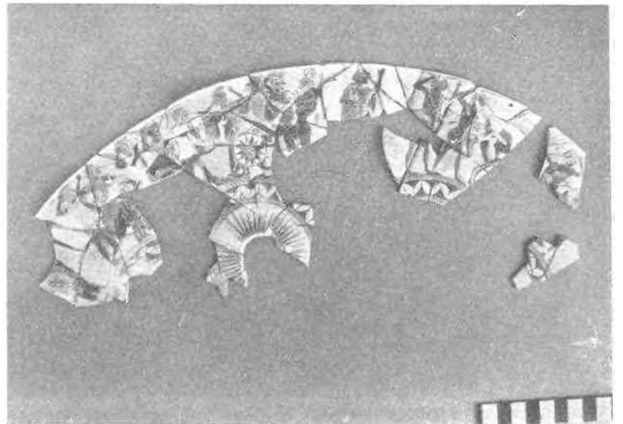


Fig. 28a — A-Fragments of Attic Black-Figure Cup, from Sector AcT.

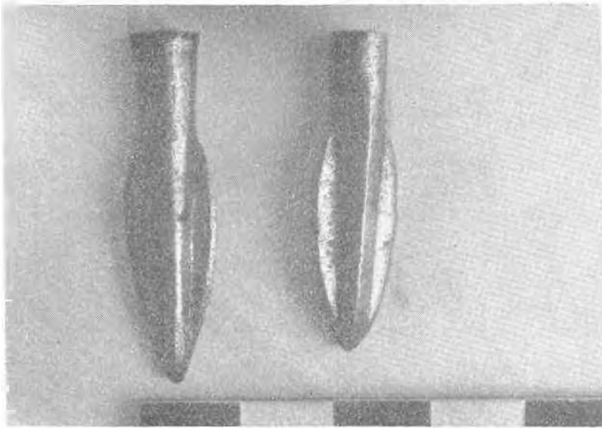


Fig. 29 — Bronze Arrowheads from the Acropolis of Sardis.

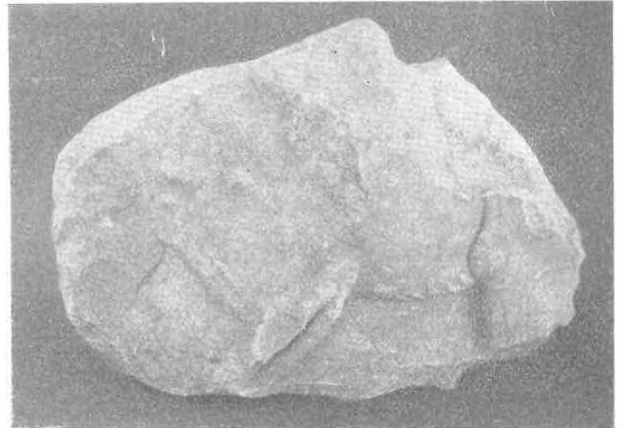


Fig. 30 — Archaic Marble Relief of A Lion, Sector AcT. (right side).



Fig. 31 — Archaic Marble Relief of A Lion, Sector AcT (Left side)

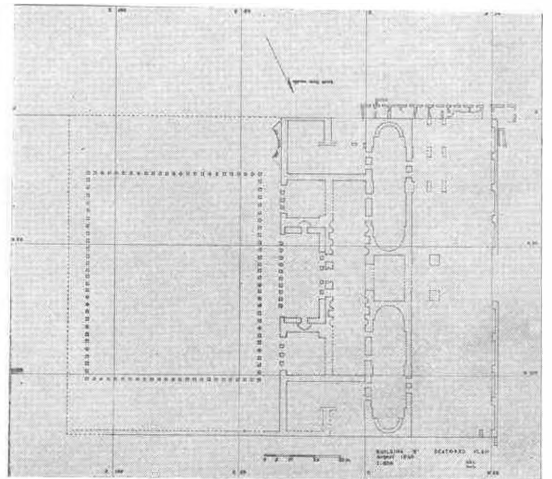


Fig. 32 — Complex B, tentative Restoration of Plan, 1960.



Fig. 33 "Marble Court" of East B, View along West Side Toward South (Showing Triple Gate in West Side).



Fig. 34 — Part of Female Head, Second or Third Century A. D.

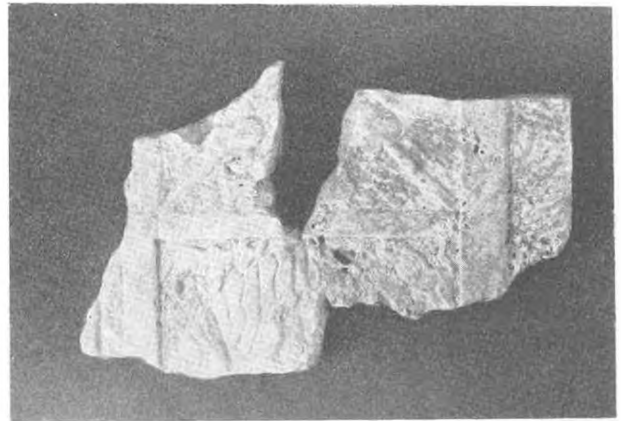


Fig. 35 — Fragment of Early Byzantine Relief with Plants and Animals (Lion, Bull).



Fig. 36 — Grave in Roman Building South of the "House of Bronzes".

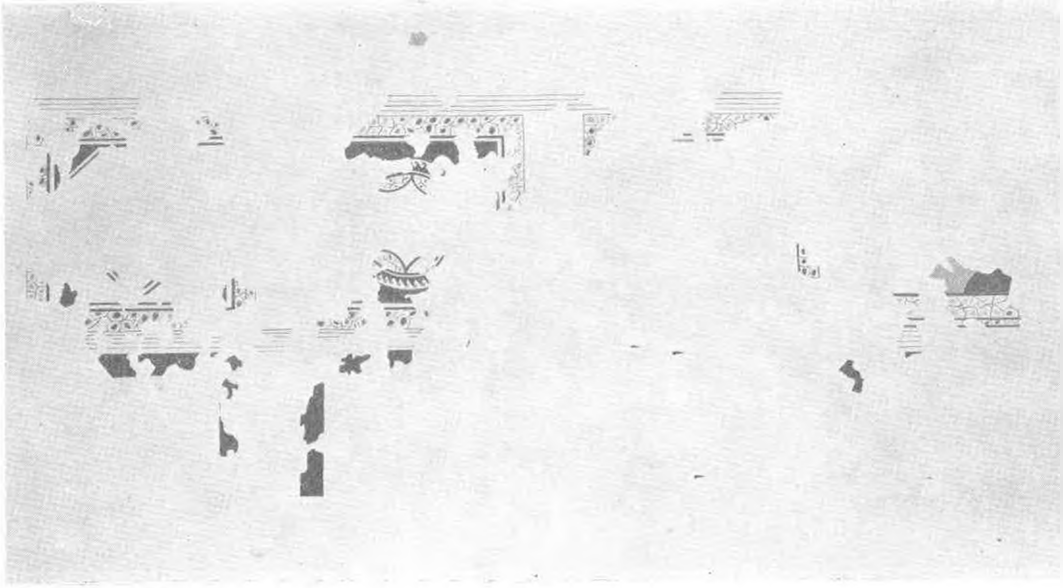


Fig. 37 — Wall Painting on Wall NS, Sector CG (Drawing of Remaining Fragments).



Fig. 38 — Fragment of Glazed Bowl, Byzantine, from Sector AcT.



Fig. 39 — Fragment of Attic Black-Figure Gup, Upper Lydian Level, Sector HoB.

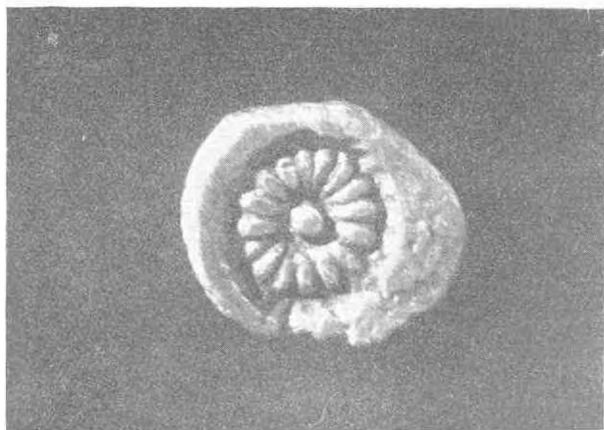


Fig. 40 — Archaic Silver Coin. Fill above Lydian Level, Sector HoB.



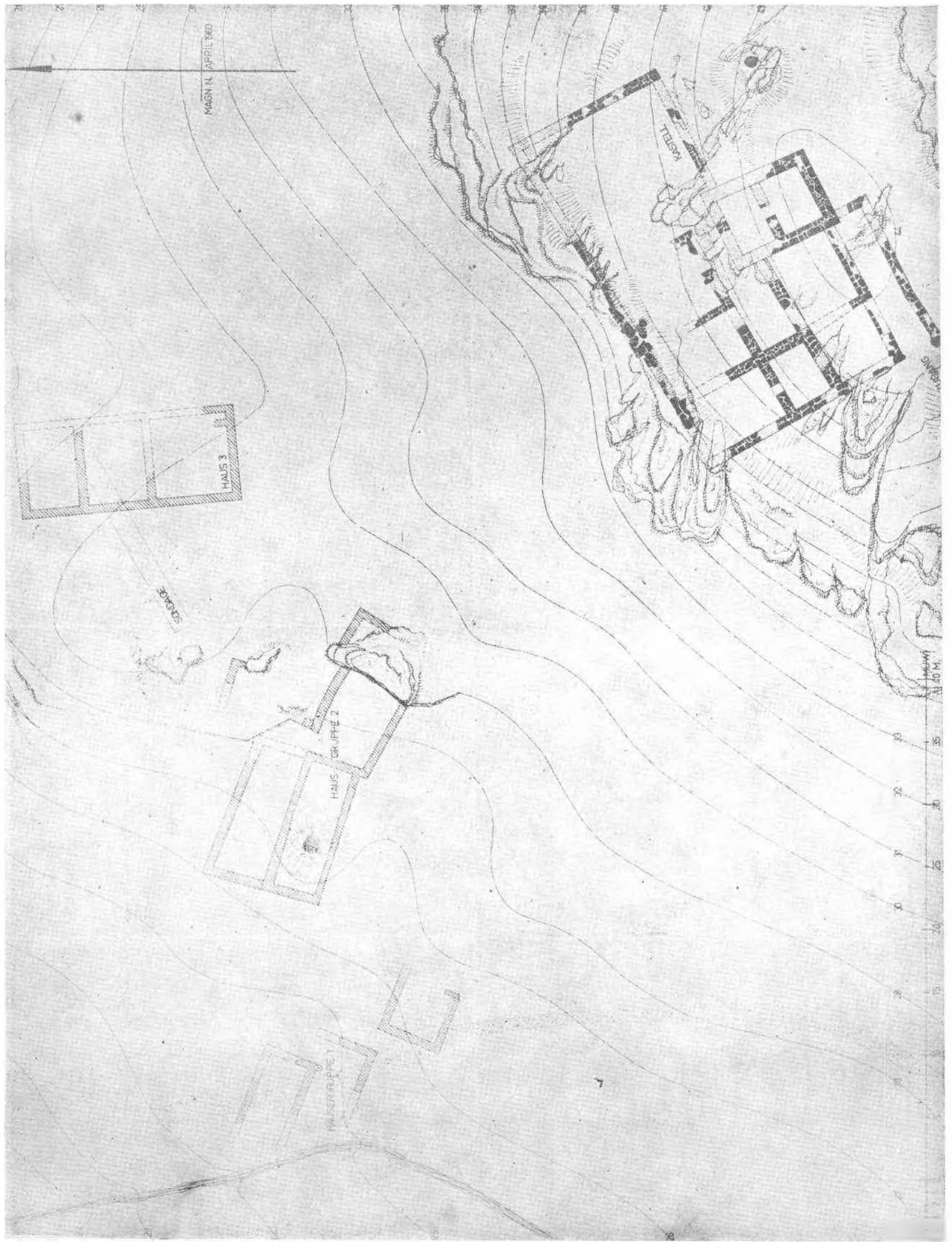
Fig. 41 — Lydian Terracotta Revetment Level I, Sector Pc.



Fig. 42 — Round Marble Base with Relief of God Tmolus Sector Pn.



Fig. 43 — Archaic Marble Relief from Vicinity of Sardis.

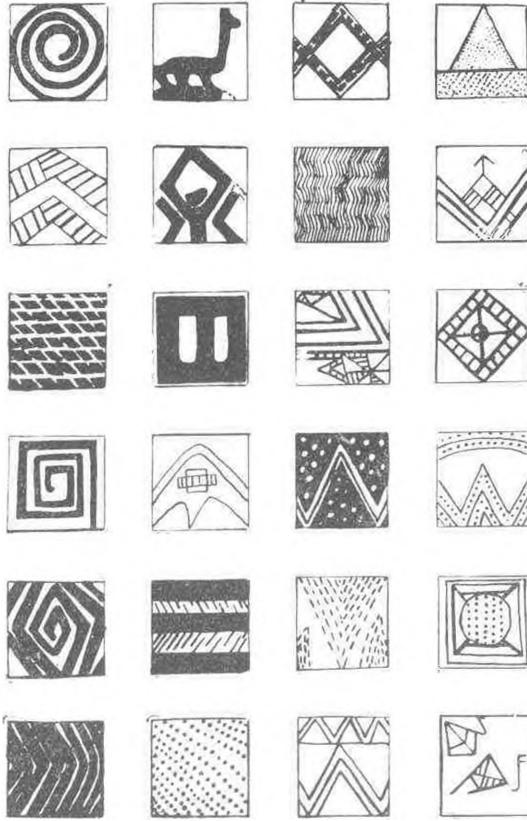


Plan

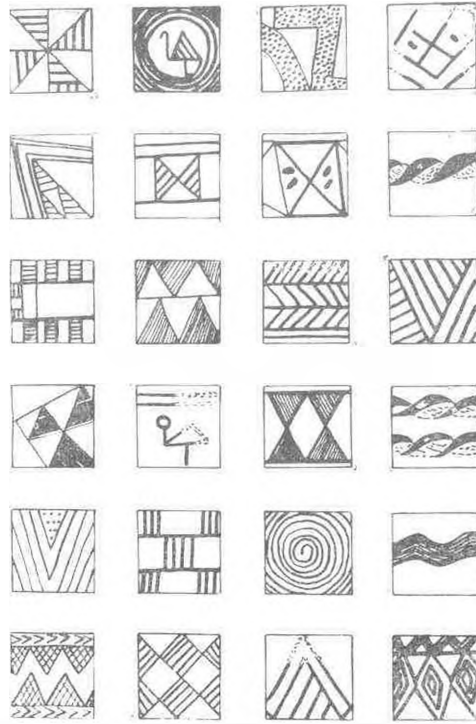


Res. 1 — Pulur köyündeki bir evin değirmi köşesi ocak yeridir.

Pulur Chalkolitik Kat. I. II.

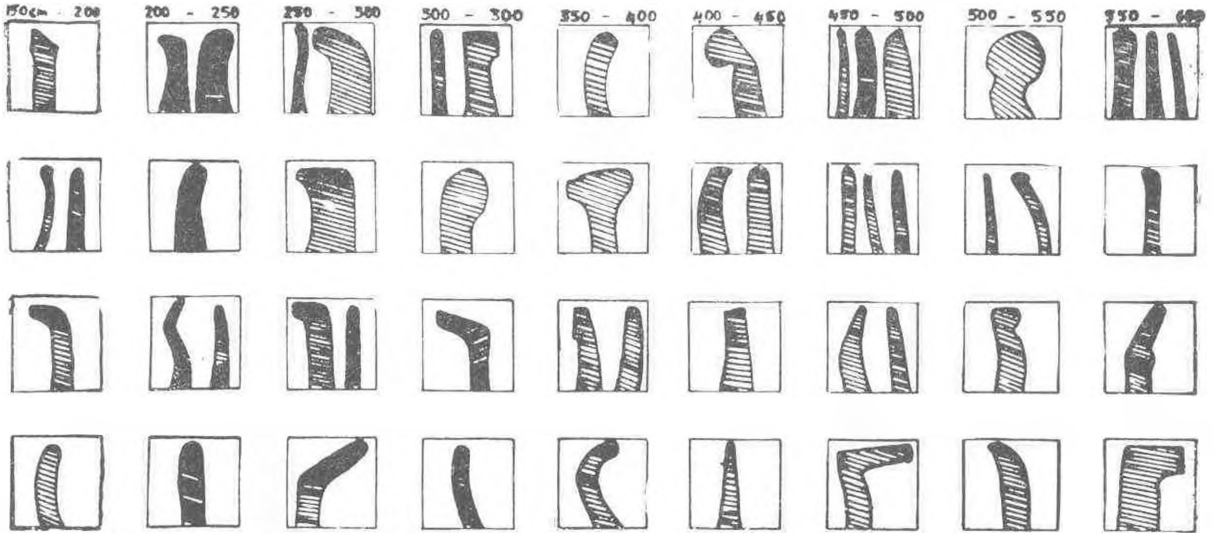


Res. 2 Pulur kalkolitik katı I, II.

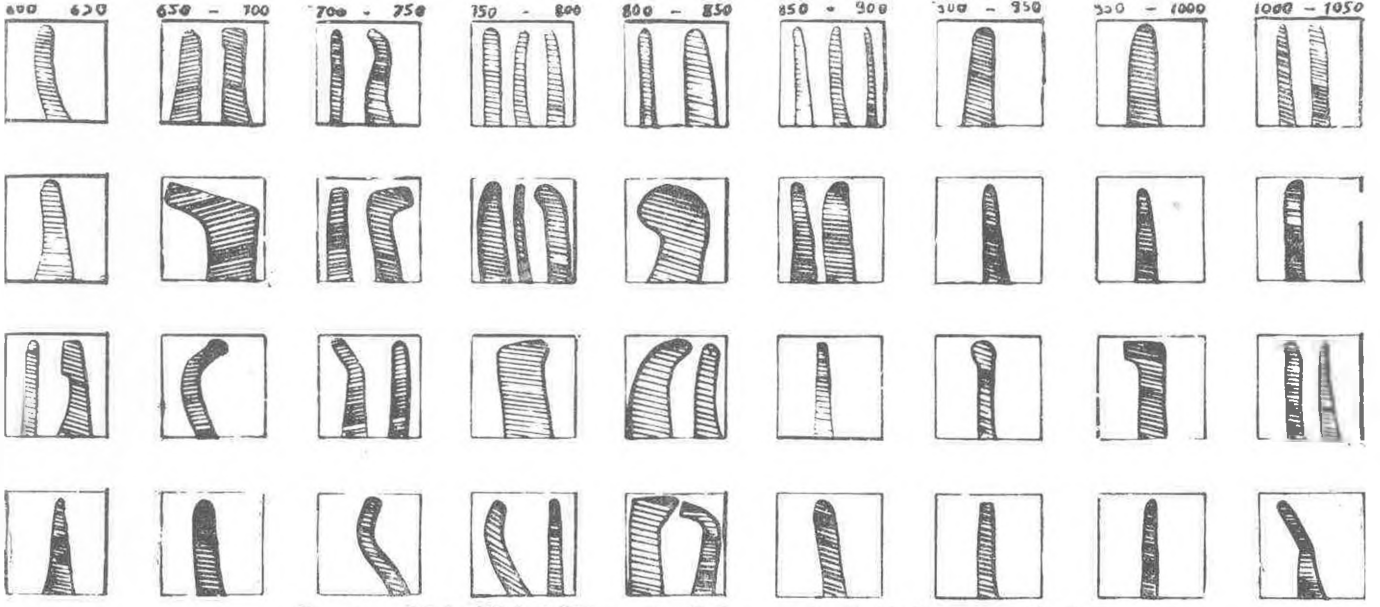


Res. 3 — Pulur Höyüğü geç chalkolithik.. Katında Karaz tipi çanak çömleklerdeki süsler.

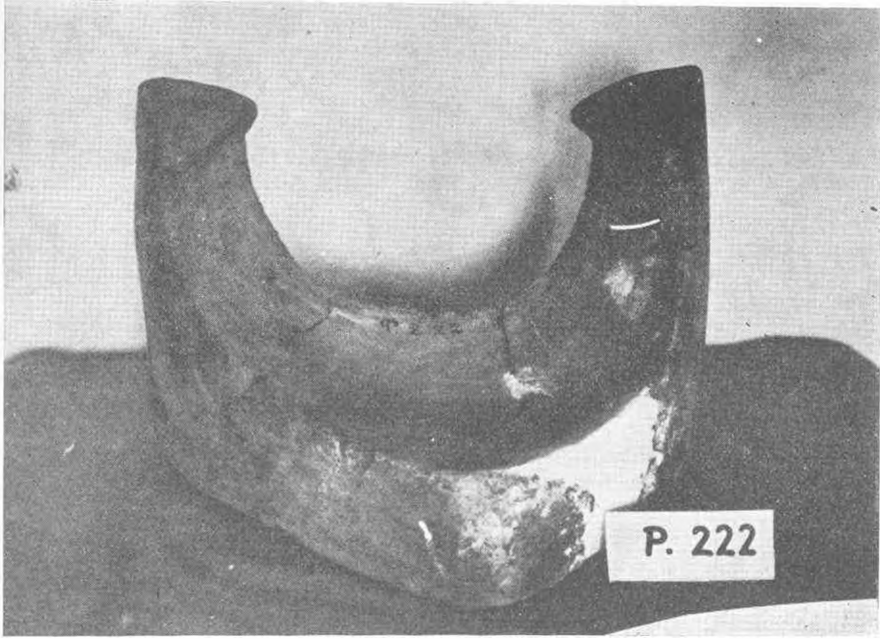
Muhtelif derinliklere göre, Pulur çanak ve çömlek kenar profilleri.



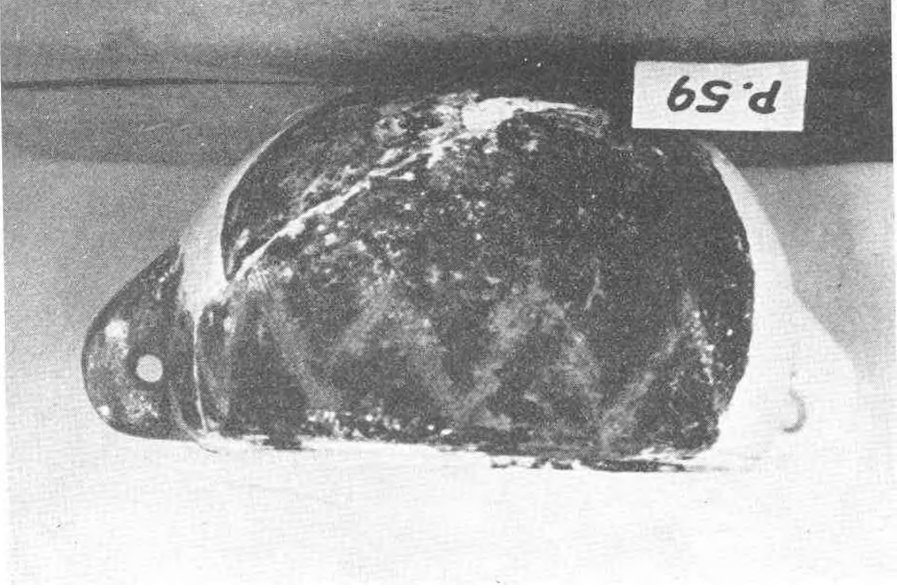
Res. 4 — Muhtelif derinliklere göre Pulur çanak çömlek kenar profilleri.



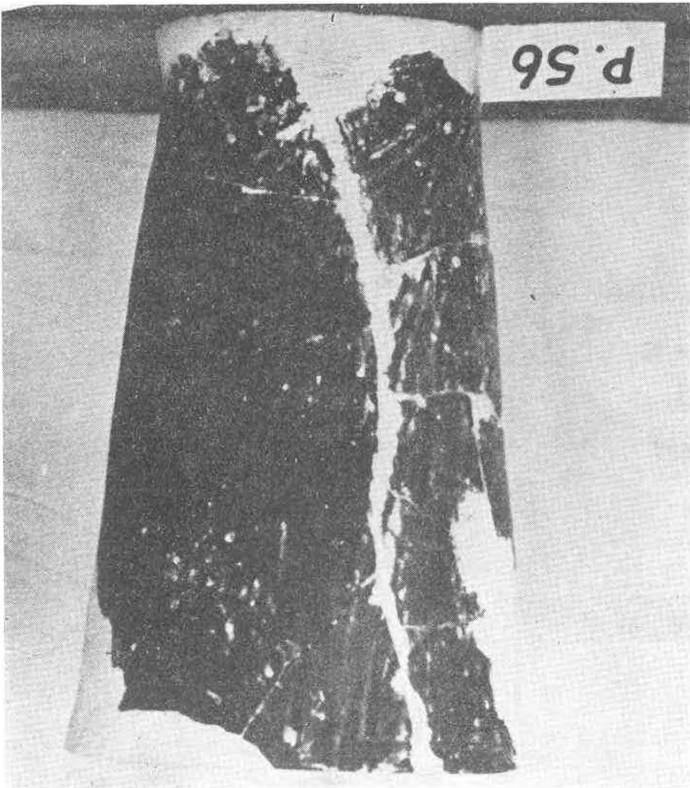
Res. 5 — Muhtelif derinliklere göre Pulur çanak çömlek kenar profilleri



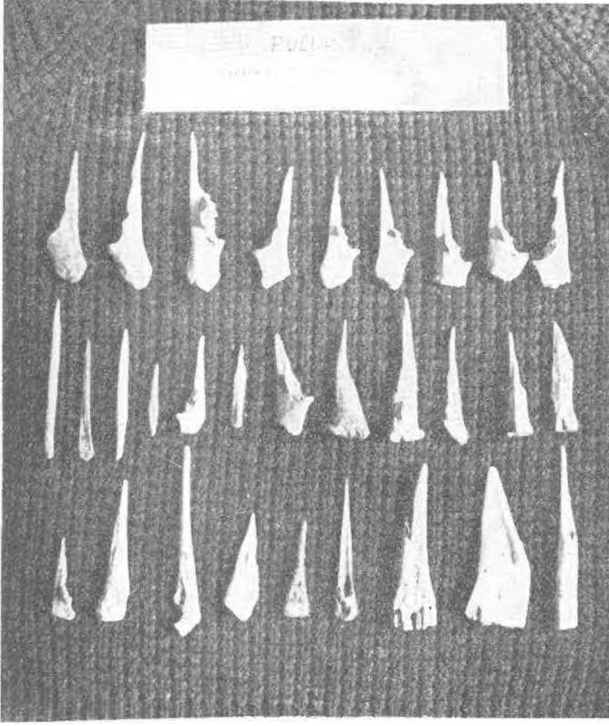
Res. 6



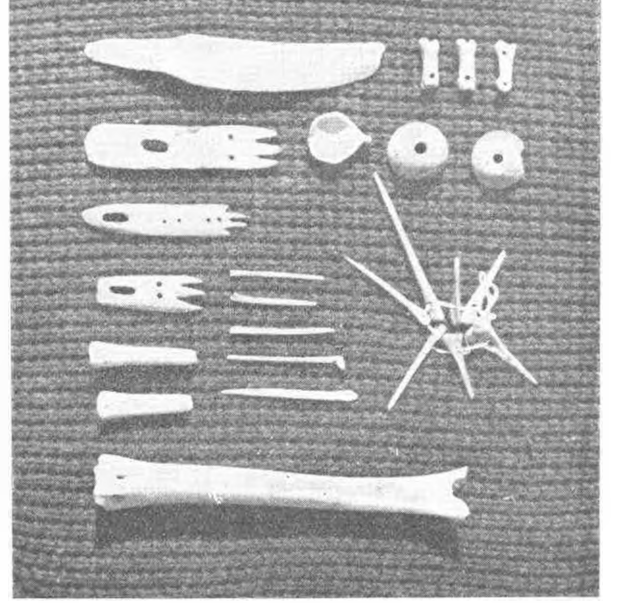
Res. 8



Res. 7



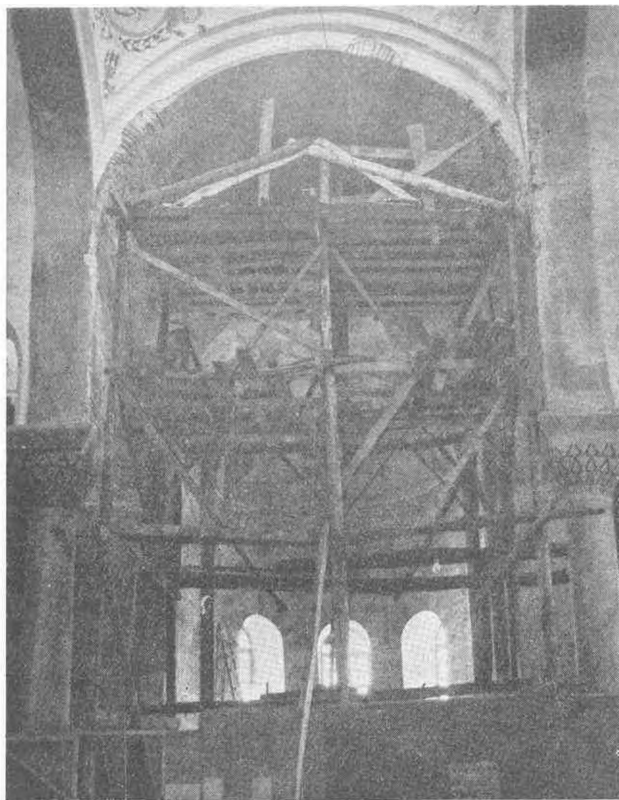
Res. 9



Res. 10



Res. 11 — Pulur Höyüğünün doğu eteğindeki sondaj yeri
Burada Dr. H. Vary idaresinde eski Bronz çağına ait mezarlar meydana çıkarılmıştır.



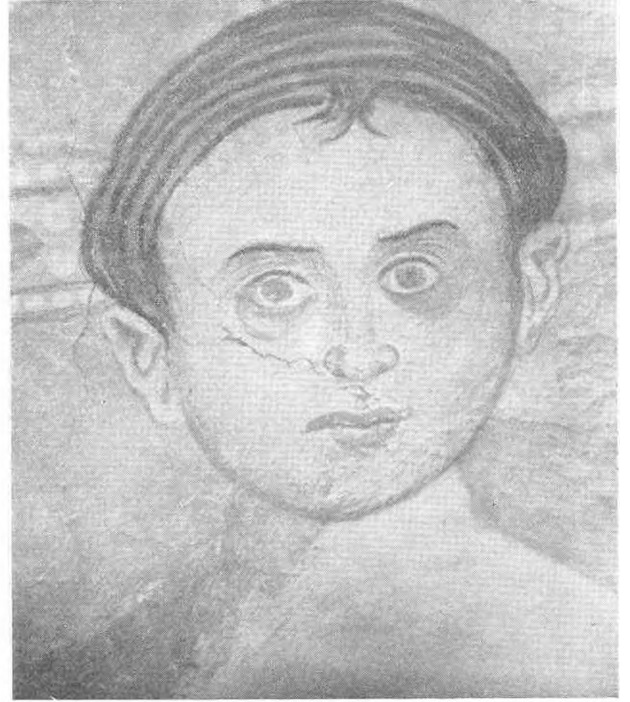
Res. I. — Scaffold in the east vault of the Naos



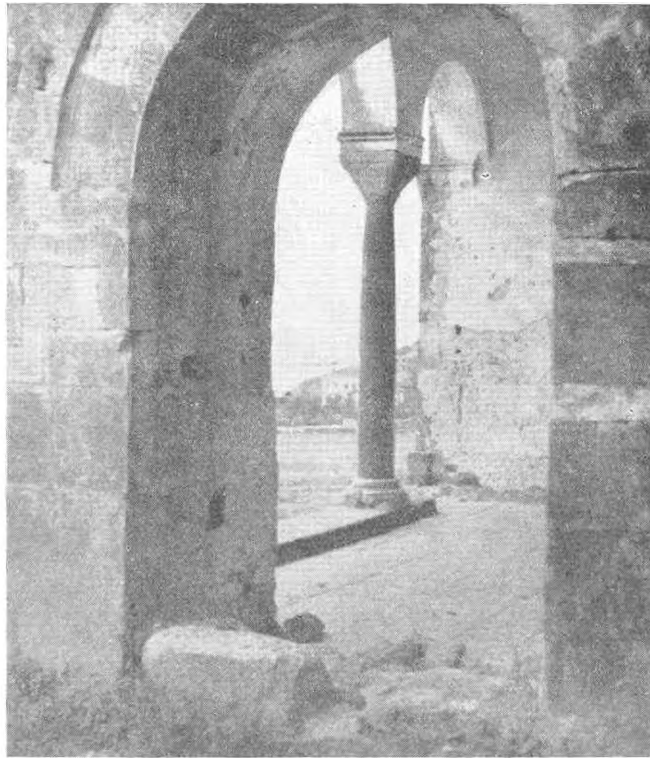
Res. I^a — East vault of naos. Medallions before the toning in chip marks.



Res. II. — East vault of naos Medallions after completion of work.



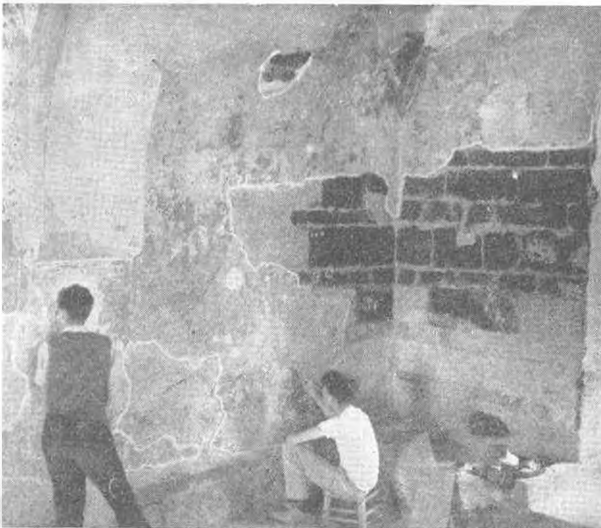
Res. III. East vault of naos. Detail of head of Child Christ.



Res. IV. — View looking North East through the North porch.



Res. V — Exonarthex Showing the Iron railings erected by the department of antiquities



Res. VI — Work in progress on the East wall of the Narthex.



Res. VII — Narthex. North vault. Detail showing partial removal of whitewash covering.



Res. VIII — Narthex. North vault detail from the miracle of the feeding of the 5000.



Res. IX — Narthex. North wall.
Detail from the miracle of the
feeding of the 5000



Res. X — Detail from the miracle
of feeding of the 5000



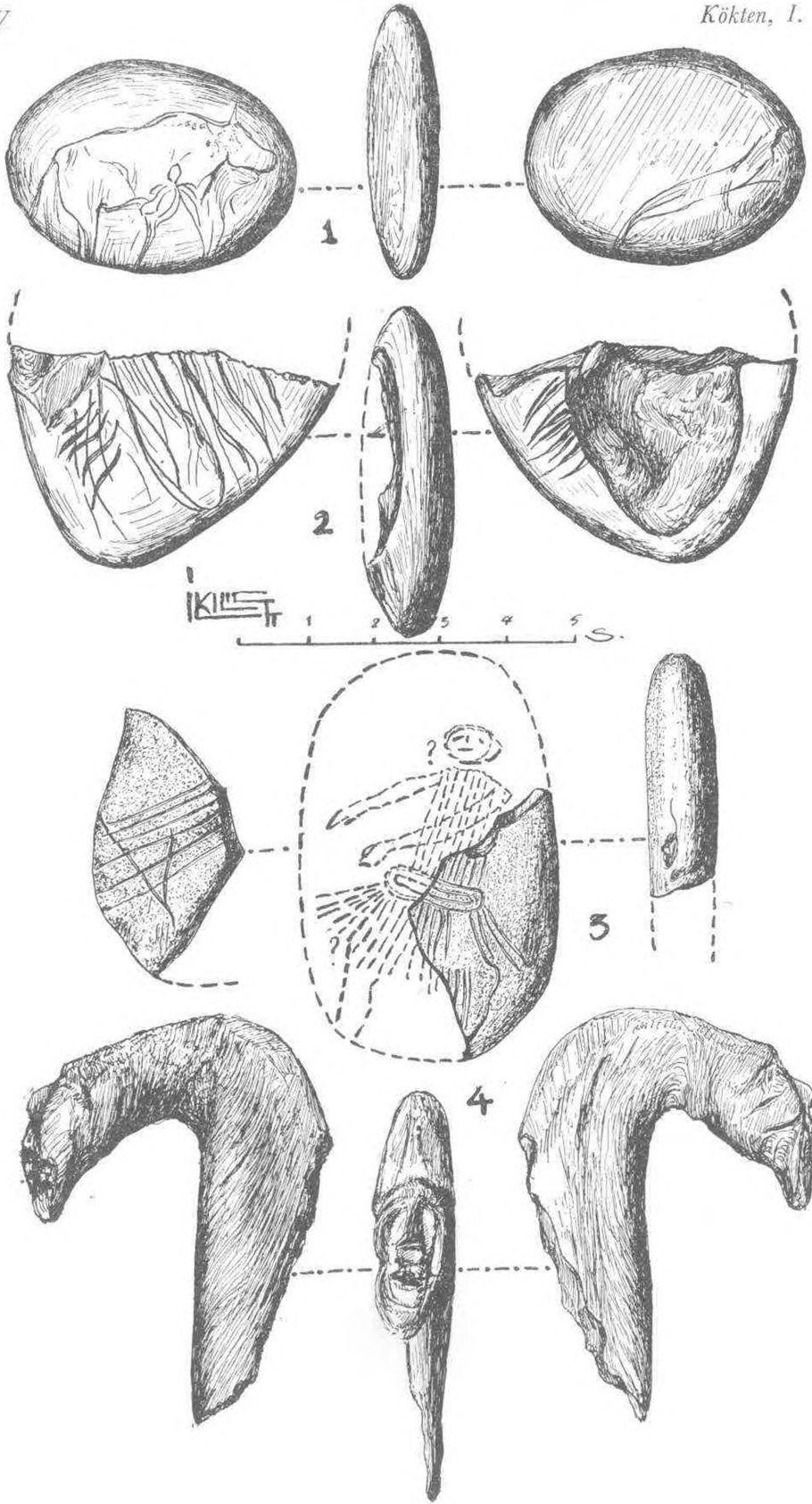
Res. XI — Narthex. North wall. Detail from
the miracle of the feeding of the 5000



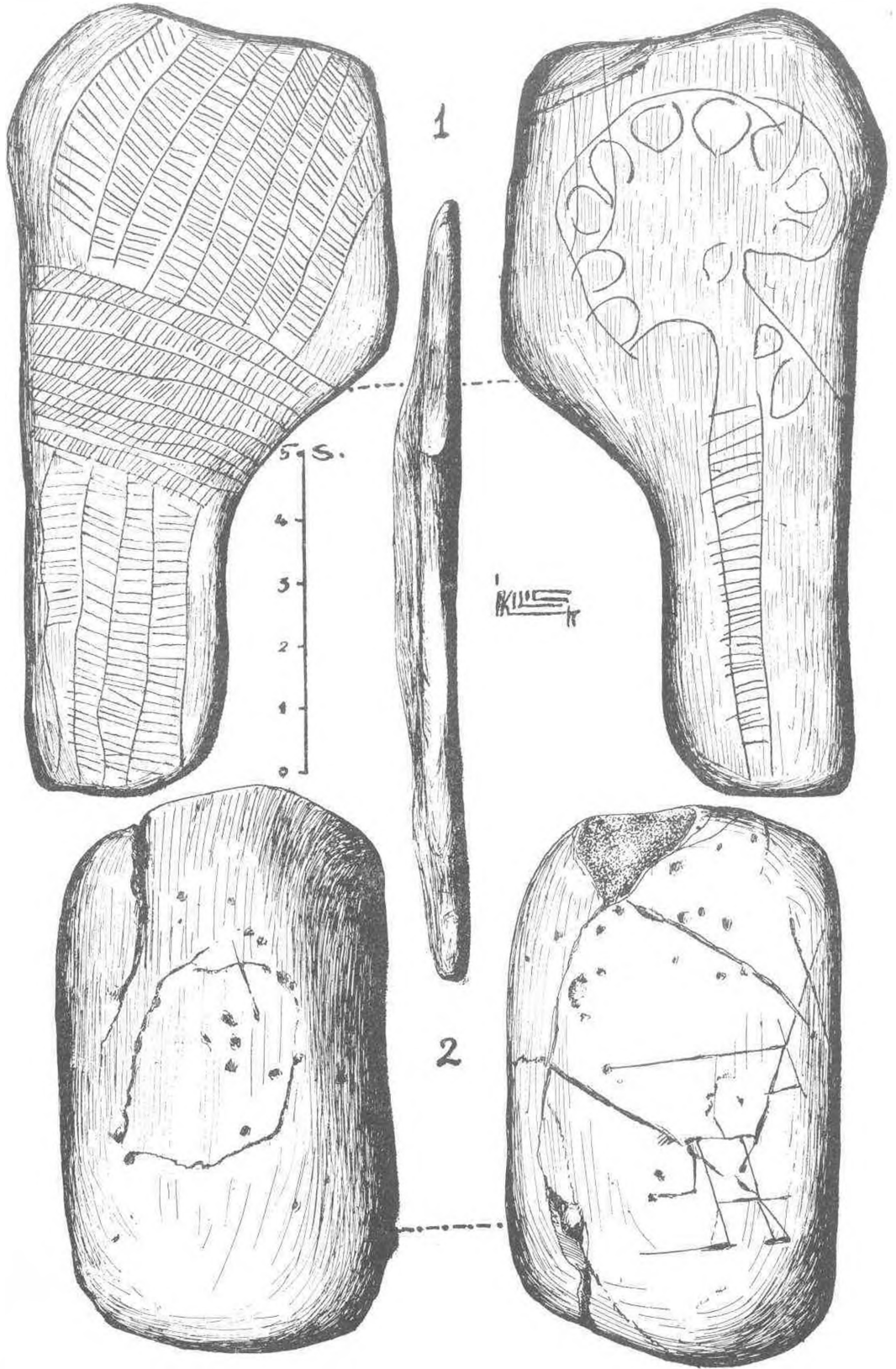
Levha I Res 1 — Karain'de üst büyük boşlukta açılan sondaj çukuru ve mağaranın önünü kapatmış bulunan taş bloklar.



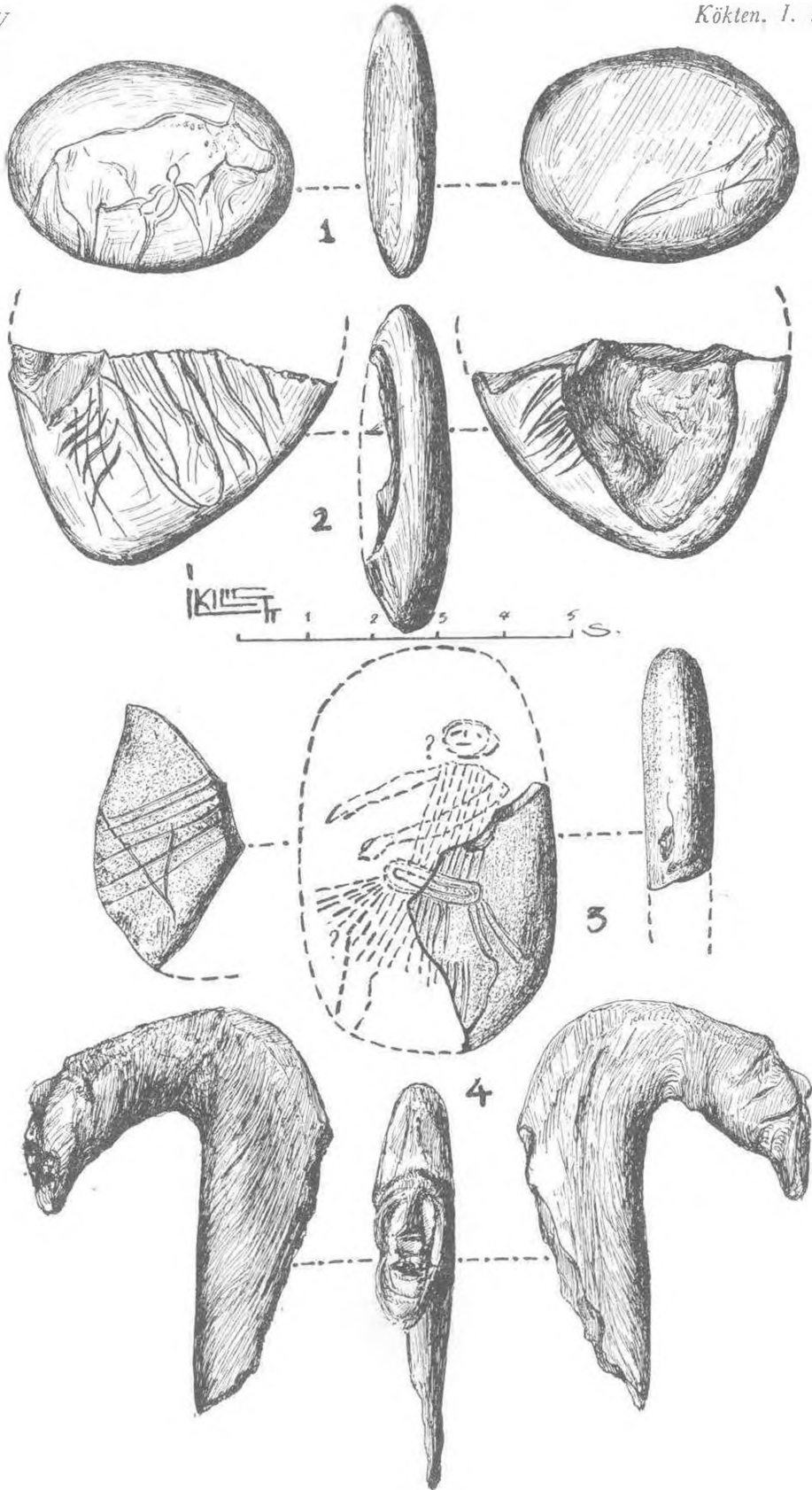
Res. 2 — Mağara önündeki uçuk, atık taş bloklarının kaldırılması ve ön seki kazısına hazırlık.



- Levha II 1 — Üzerinde çizik öküz resmi bulunan bir çakıl (Öküzini).
 2 — Üzerinde çizikli süs veya hayvan resmi bulunan kırık kara bir çakıl (Öküzini).
 3 — Üzerinde çizik insan şekli sanılan kırık bir çakıl parçası (Önüzini).
 4 — B. gözü, üst Orinyasiyen III de ele geçen (1956-1957) insan başlı kaburga kemiği parçası (bk. Tür. Arkeoloji D. S. VIII. R. 5. Karain).



Levha III 1 — İki yüzü çizik süslü (Av çetelesi ve kapan motifi) yassı çakıl (Öküzini).
2 — Bir yüzü daire, diğer yüzü çizik insan şekilli büyük bir çakıl. (Karain. B. gözü, üst Orinyasiyen III de bulunan. Akoloji D. S. VIII. R. 5. 1956-1957).



- Levha II 1 — Üzerinde çizik öküz resmi bulunan bir çakıl (Öküzini).
 2 — Üzerinde çizikli süs veya hayvan resmi bulunan kırık kara bir çakıl (Öküzini).
 3 — Üzerinde çizik insan şekli sanılan kırık bir çakıl parçası (Öküzini).
 4 — B. gözü, üst Orinyasiyen III de ele geçen (1956-1957) insan başlı kaburga kemiği parçası (bk. Tür Arkoloji D. S. VIII. R. 5. Karain).



Levha I — Res 1 — Karain'de üst büyük boşlukta açılan sondaj çukuru ve mağaranın önünü kapatmış bulunan taş bloklar.



Res. 2 — Mağara önündeki uçuk, atık taş bloklarının kaldırılması ve ön seki kazısına hazırlık.



Res. IX — Narthex. North wall.
Detail from the miracle of the
feeding of the 5000



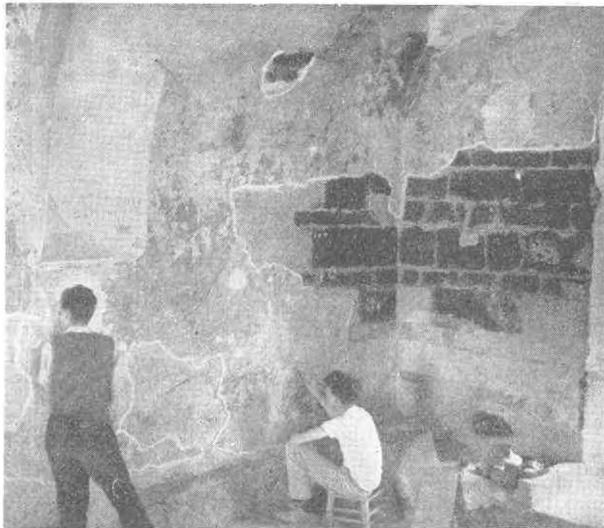
Res. X — Detail from the miracle
of feeding of the 5000



Res. XI — Narthex. North wall. Detail from
the miracle of the feeding of the 5000



Res. V — Exonarthex Showing the Iron railings erected by the department of antiquities



Res. VI — Work in progress on the East wall of the Narthex.



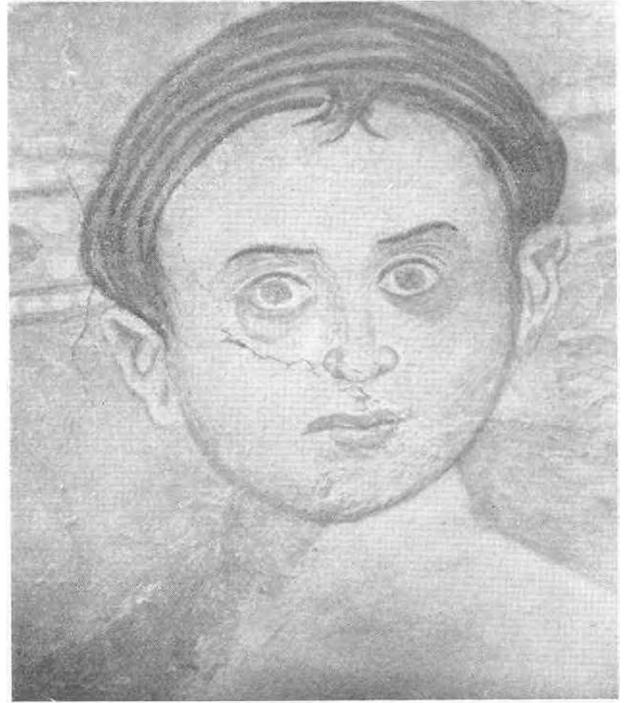
Res. VII — Narthex. North vault. Detail showing partial removal of whitewash covering.



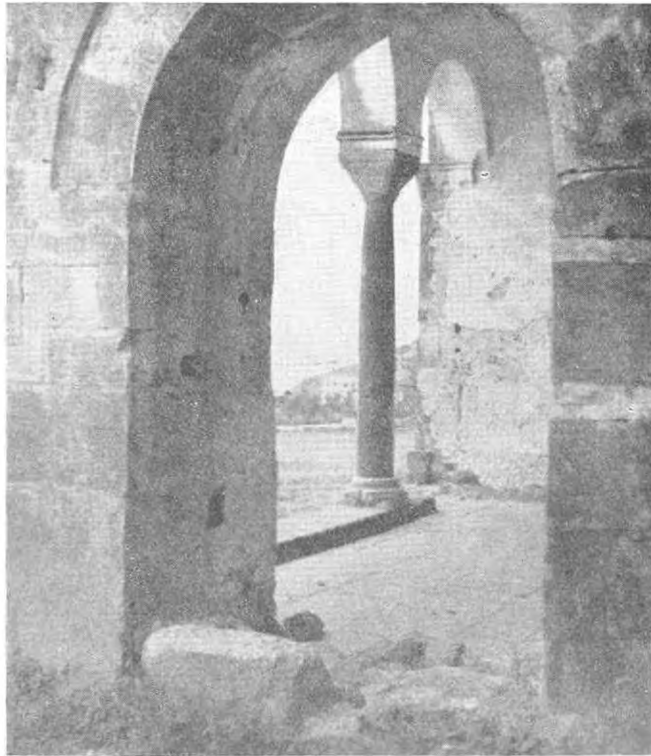
Res. VIII — Narthex. North vault detail from the miracle of the feeding of the 5000.



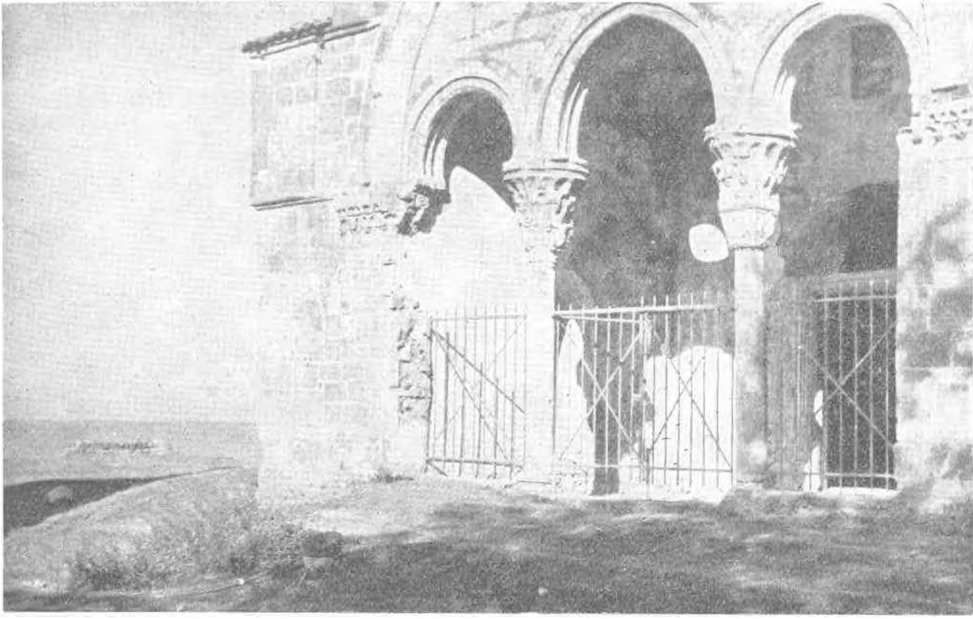
Res. II. — East vault of naos Medallions after completion of work.



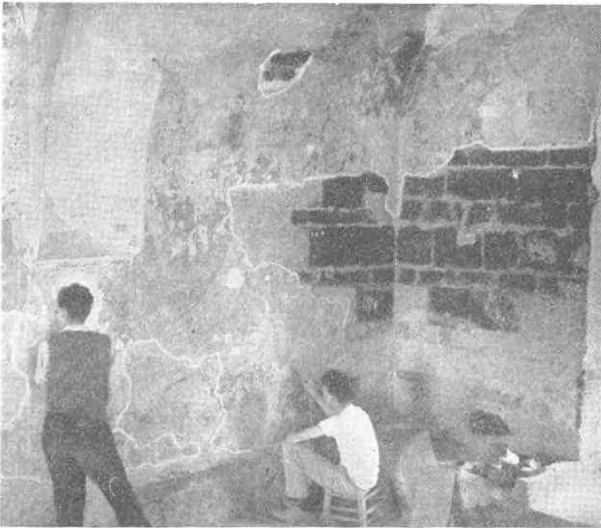
Res. III. East vault of naos. Detail of head of Child Christ.



Res. IV. — View looking North East through the North porch.



Res. V — Exonarthex Showing the Iron railings erected by the department of antiquities



Res. VI — Work in progress on the East wall of the Narthex.



Res. VII — Narthex. North vault. Detail showing partial removal of whitewash covering.



Res. VIII — Narthex. North vault detail from the miracle of the feeding of the 5000.



Res. IX — Narthex. North wall.
Detail from the miracle of the
feeding of the 5000



Res. X — Detail from the miracle
of feeding of the 5000



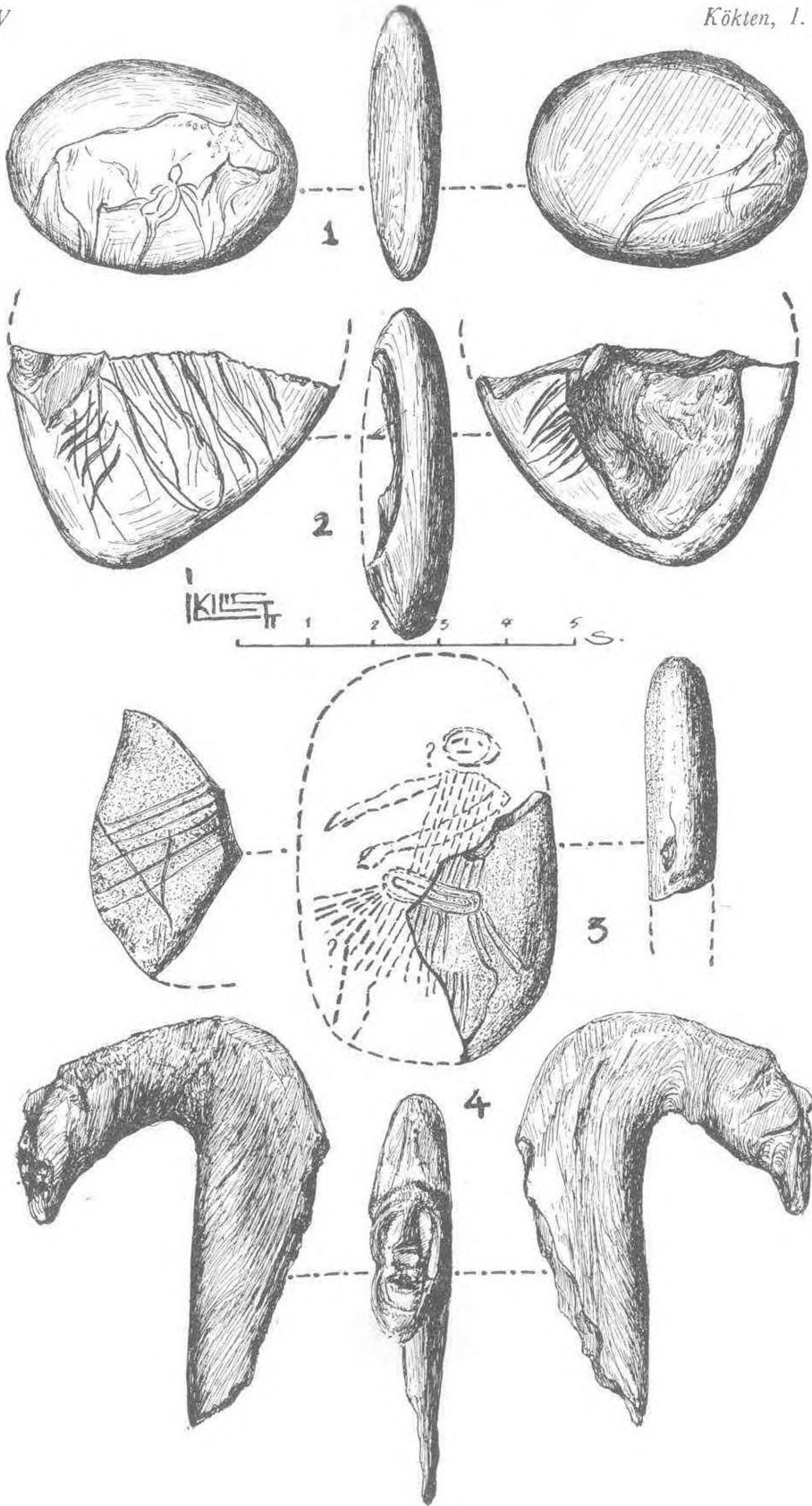
Res. XI — Narthex. North wall. Detail from
the miracle of the feeding of the 5000



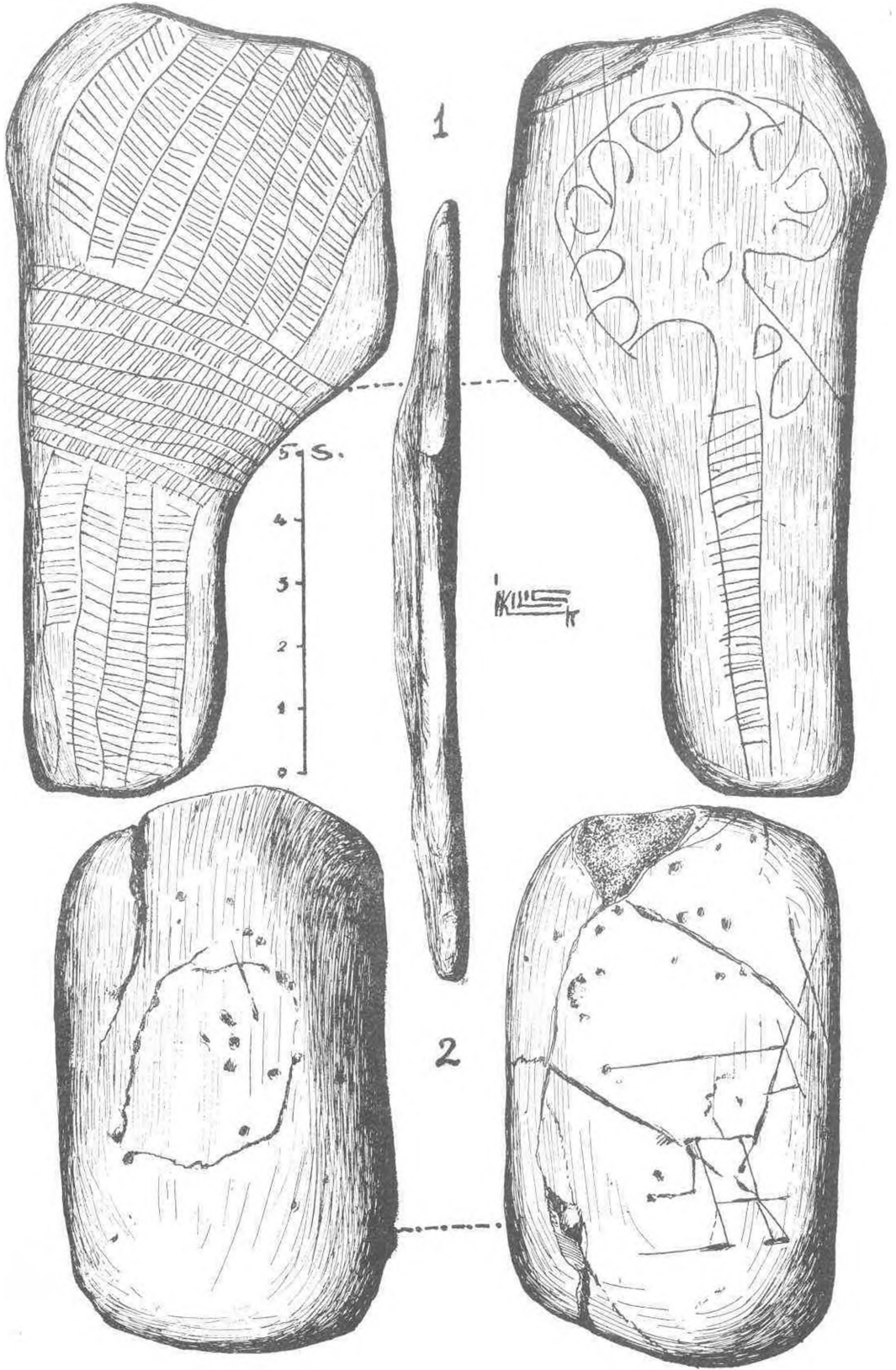
Levha I — Res 1 — Karain'de üst büyük boşlukta açılan sondaj çukuru ve mağaranın önünü kapatmış bulunan taş bloklar.



Res. 2 — Mağara önündeki uçuk, atık taş bloklarının kaldırılması ve ön seki kazısına hazırlık.



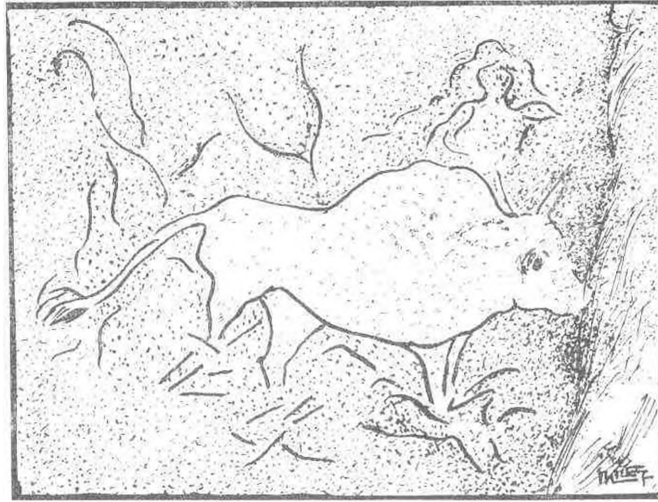
- Levha II 1 — Üzerinde çizik öküz resmi bulunan bir çakıl (Öküzini).
 2 — Üzerinde çizikli süs veya hayvan resmi bulunan kırık kara bir çakıl (Öküzini).
 3 — Üzerinde çizik insan şekli sanılan kırık bir çakıl parçası (Önüzini).
 4 — B. gözü, üst Orinyasiyen III de ele geçen (1956 - 1957) insan başlı kaburga kemiği parçası (bk. Tür Arkoloji D. S. VIII. R. 5. Karain).



Levha III 1 — İki yüzü çizik süslü (Av çetelesi ve kapan motifi) yassı çakıl (Öküzini).
2 — Bir yüzü daire, diğer yüzü çizik insan şekilli büyük bir çakıl. (Karan, B. gözü, üst Orinyasiyen III de bulunan, Akeoloji D. S. VIII. R. 5. 1956-1957).



Levha IV Res. 1 — Yağ köyünde “Öküzini” duvarlarında tesbit edilen öküz şekli (Antalya).



Res. 2 — Aynı öküzün resmi (Öküzini).