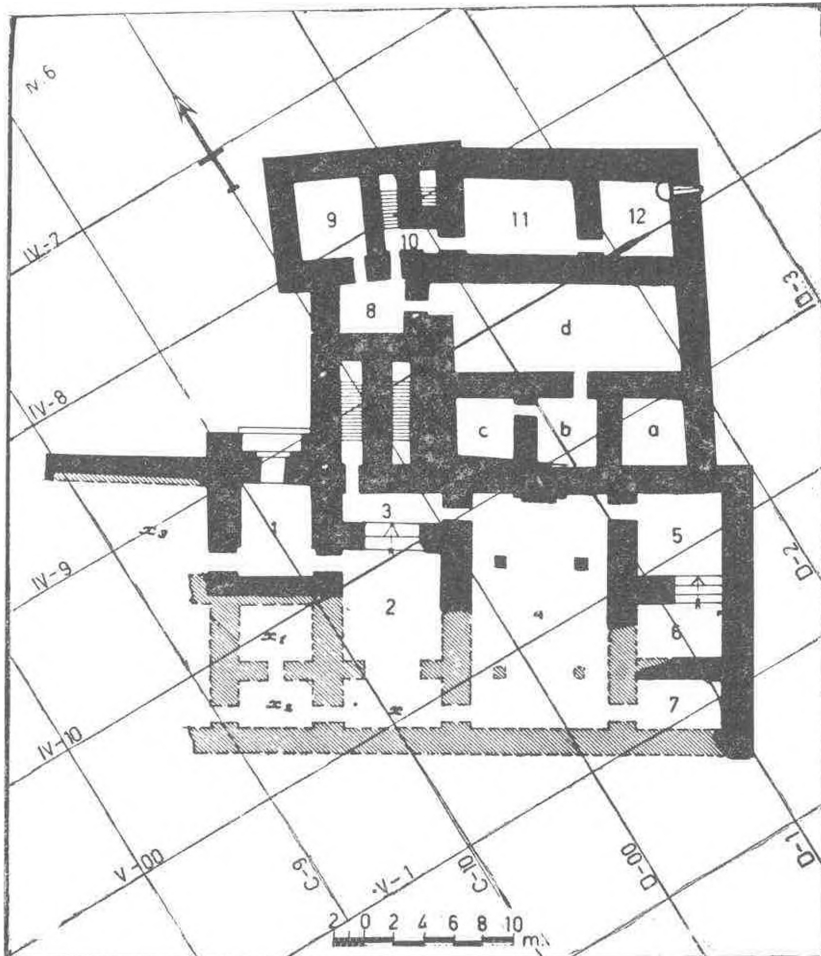


Res. 1 — Tilmen Höyüğün güney - doğudan görünüşü.



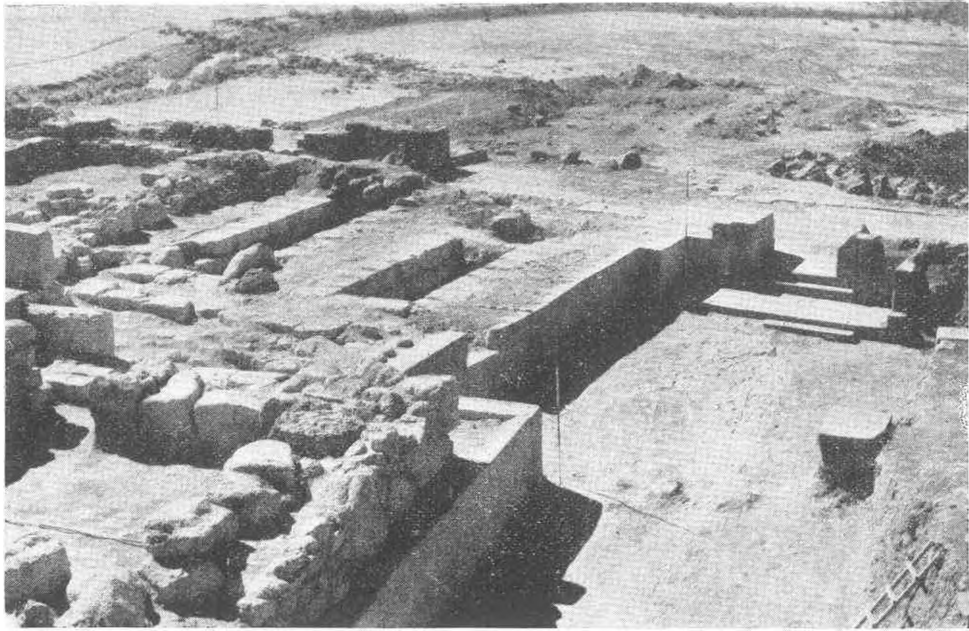
Res. 2 — Tilmen Hüyük: II kat sarayının rekonstrüksiyon planı.



Res. 3 — Tilmen Hüyük: II. Kat sarayının orta kesimi.



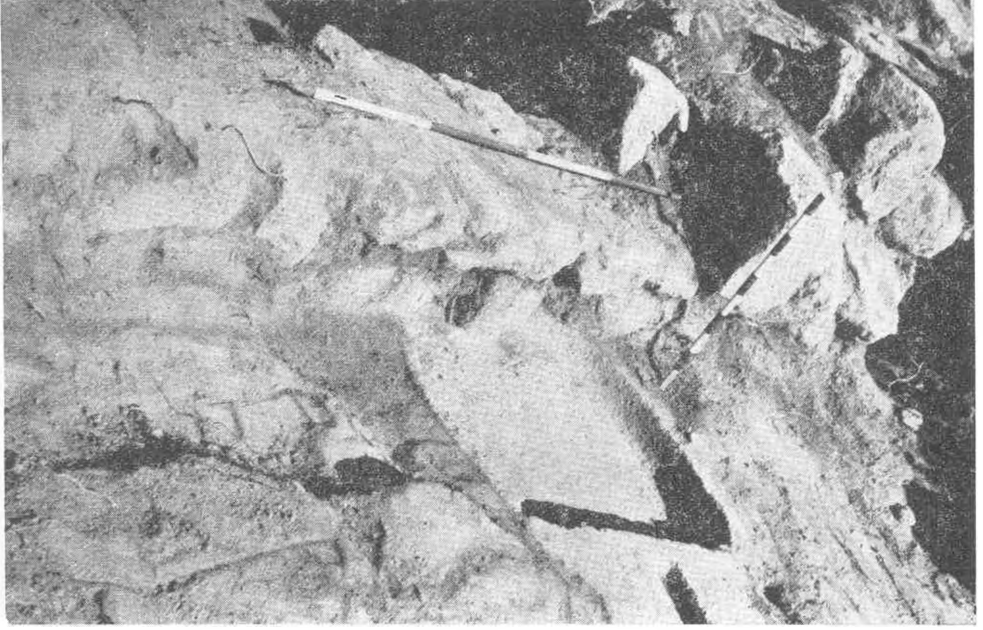
Res. 4 — Tilmen Hüyük: II. kat sarayının kuzey dairelerinin güney - batıdan görünüşü.



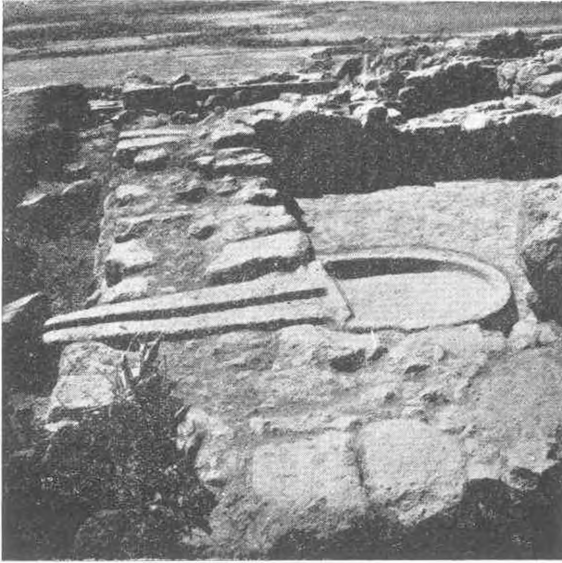
Res. 5 — Tilmen Hüyük: Ön plânda sarayın IIc ve IIb yapılarından bir kesim Orta plânda II c safhasına ait merdiven-altı yapısı ve kapı,arka plânda bataklıkli ova görülüyor.



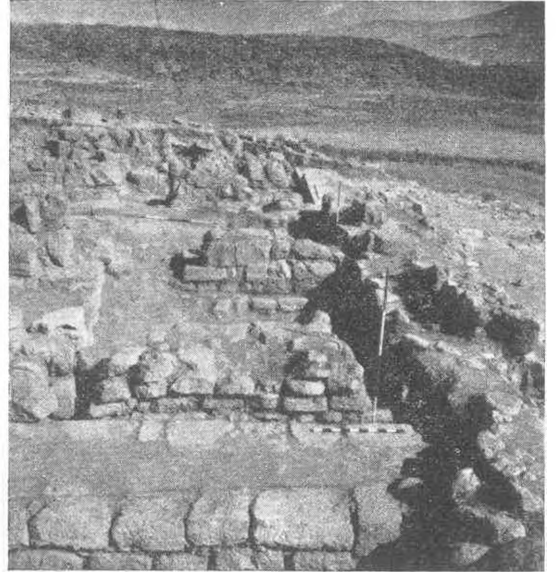
Res. 6 — Tilmen Hüyük; Ön plânda II. kat sarayının güney kesimindeki çatışmalar. Arka plânda İslâhiye ovası.



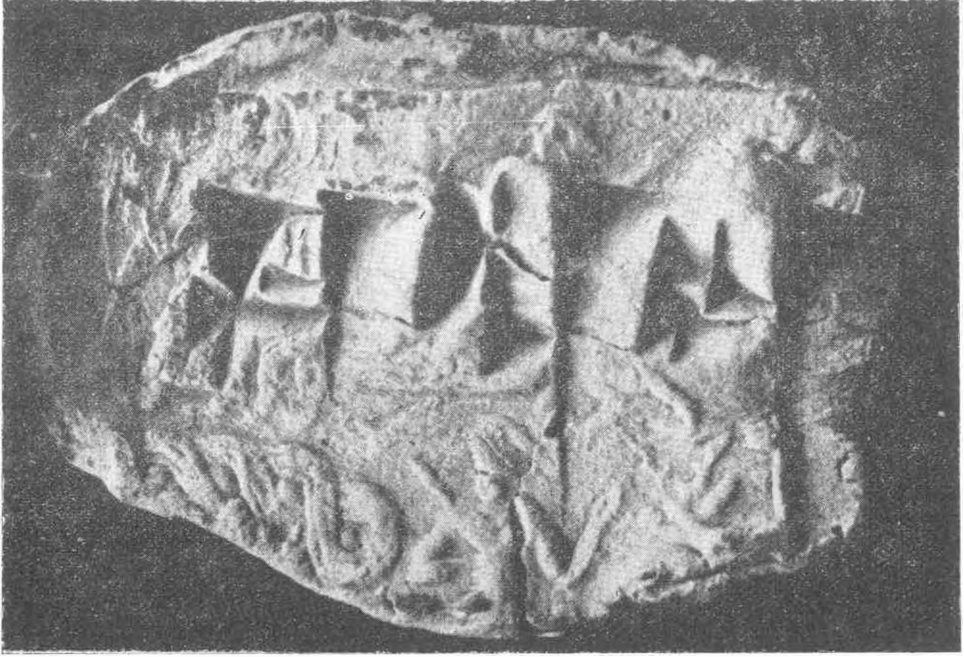
Res. 7 — Tilmen Hüyük: II Kat sarayının banyo dairesinin kuzey - doğu köşesi. Üstte IIb, altta IIc duvarı.



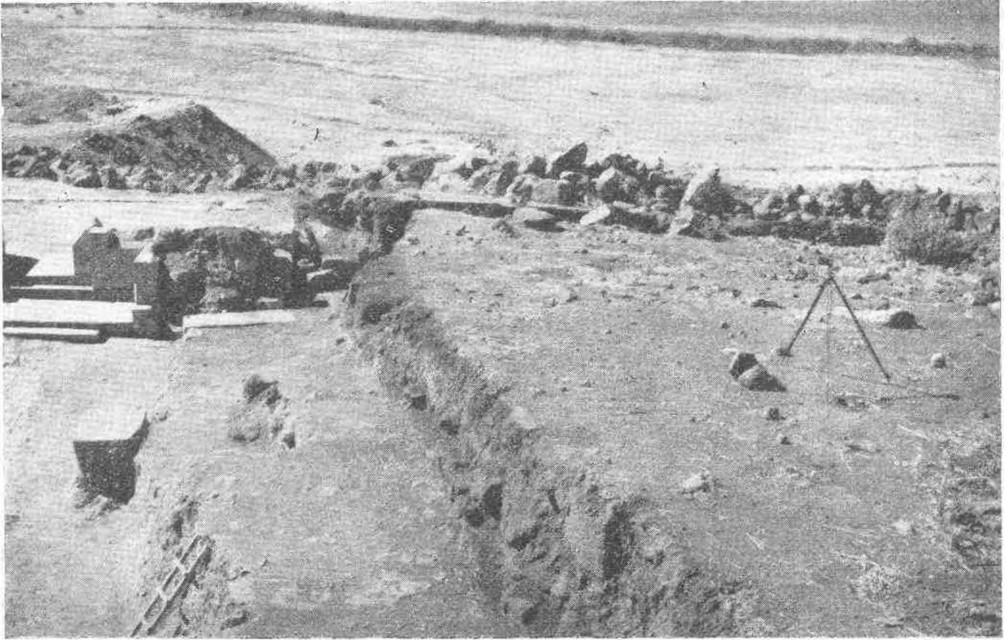
Res. 8 — Tilmen Hüyük: Aynı banyo dairesinin II c safhasından bir görünüş.



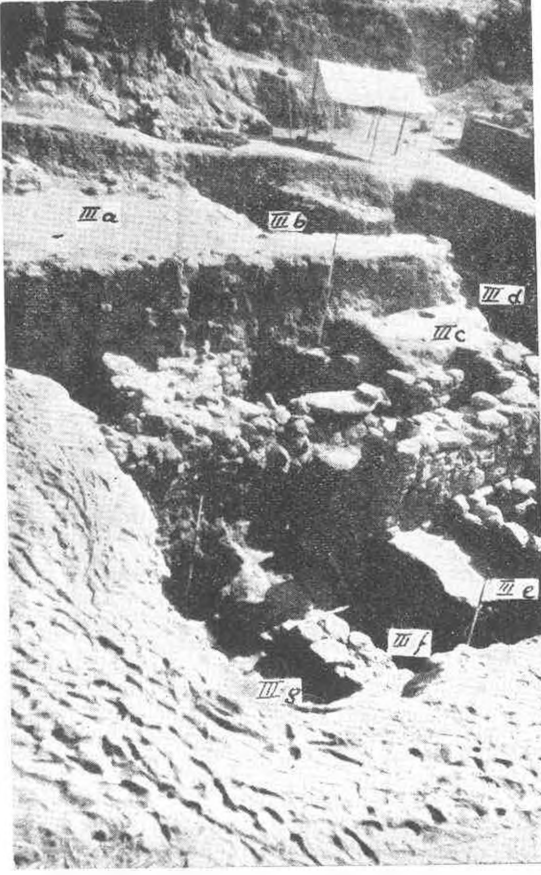
Res. 9 — Tilmen Hüyük: bullanın bulunduğu yer (Ön planda yatay ve dikey jalonların birleştiği kesim = IIc' nin üstü).



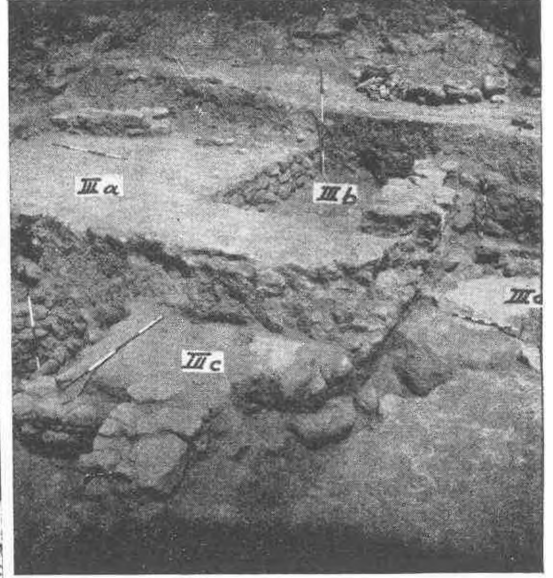
Res. 10 — Tilmen Hüyük: Sarayın II c safhasına ait tabakasında bulunan Bullanın çivi yazısı lejandlı geniş yüzü (Bullanın uzunluğu: 2,5 cm)



Res. 11 — Tilmen Hüyük: II. kat sarayının batı kesimindeki sondaj yerinin kazıya başlamadan önceki durumu.



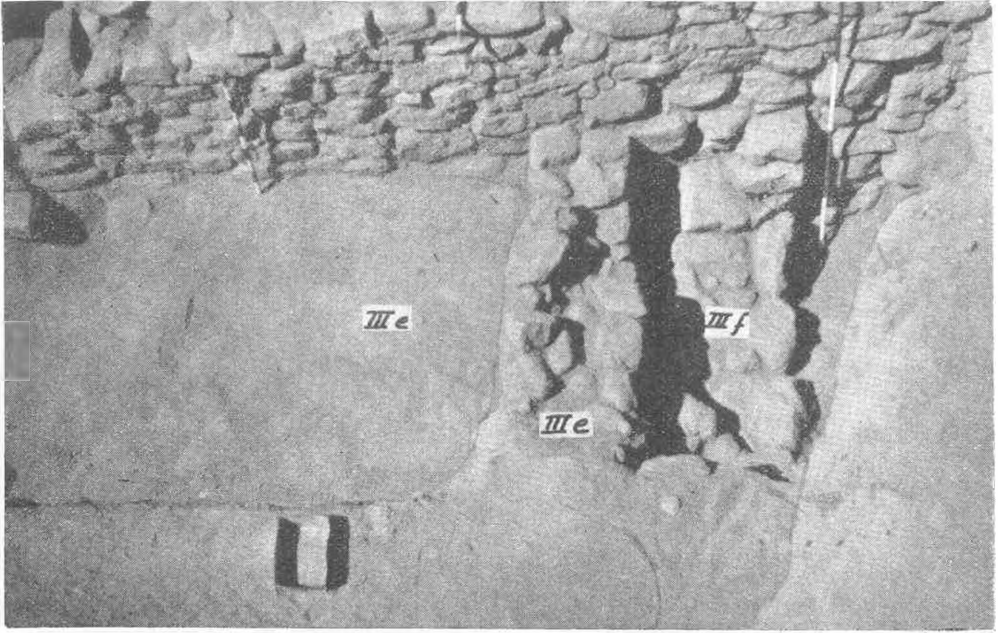
Res. 12 — Tilmen Hüyük, IV. dönem (1962) sondajı alanında tesbit edilen seviyeler.



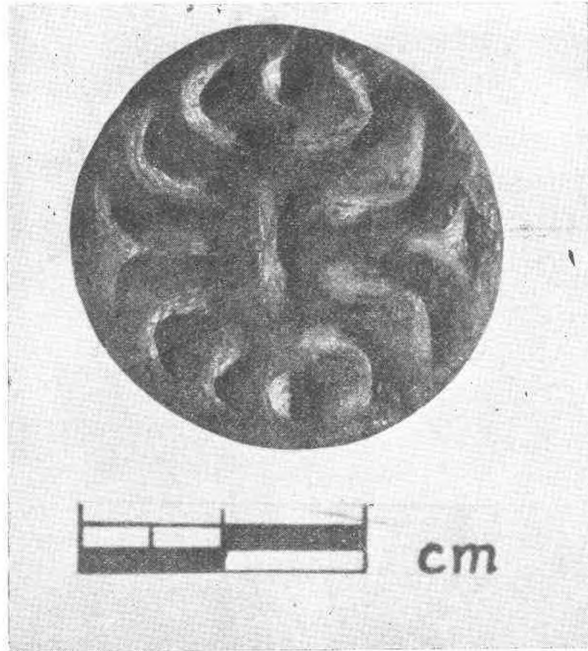
Res. 13 — Aynı sondaj yerinin kuzey - doğu kesiminin görünüşü



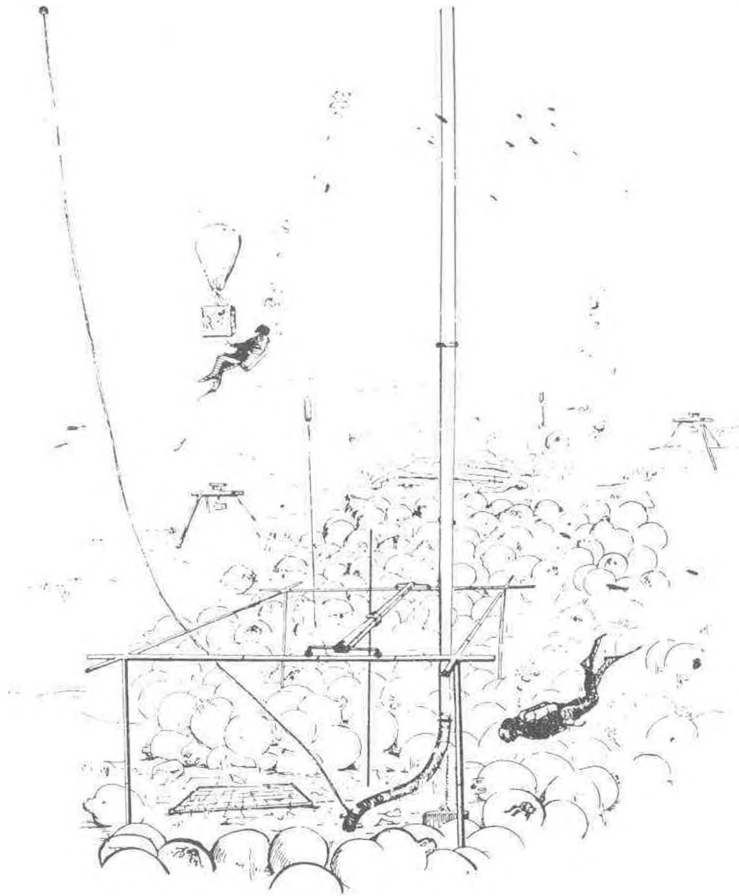
Res. 14 — Tilmen: Hüyük Aynı sondaj yerinin orta kesiminden bir görünüş (ön planda III e döşemesi).



Res. 15 — Tilmen Hüyük: Aynı sondaj yerinin III e döşemesi ve duvarı ve III f duvarı.



Res. 16—Tilmen Hüyük:1962 sondajı, III f seviyesinde bulunan damga mühür (Tc -k 199).



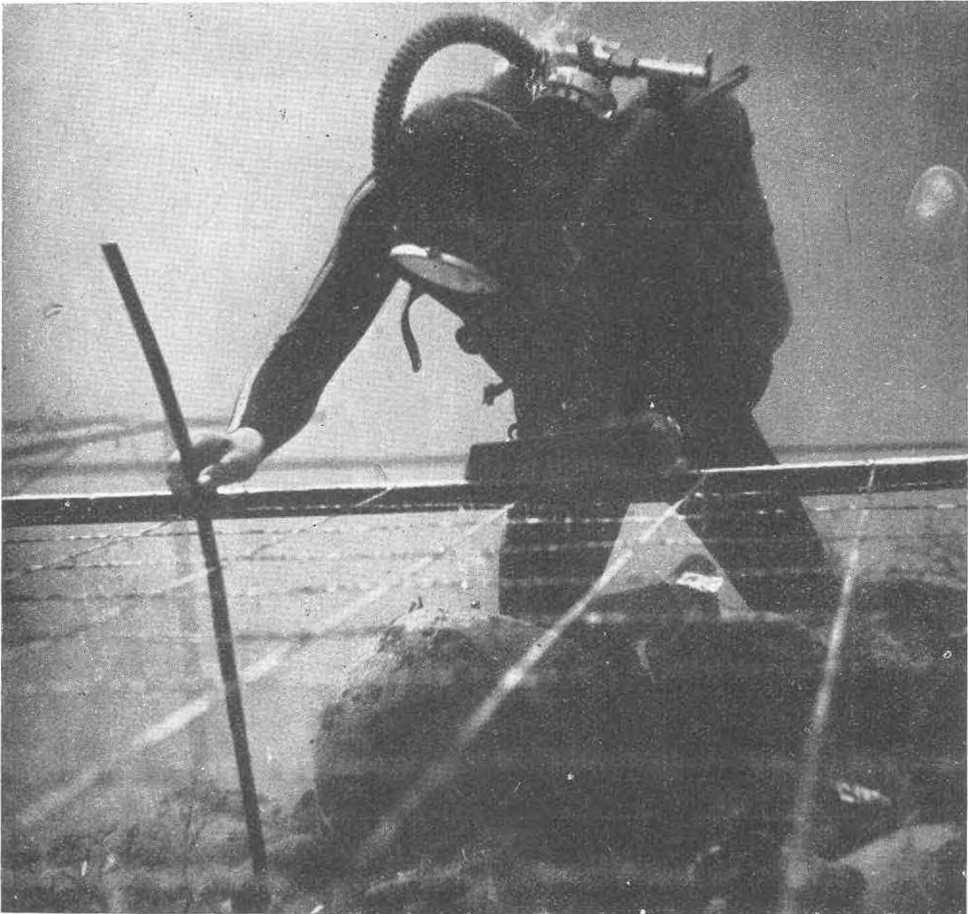
Res. 1



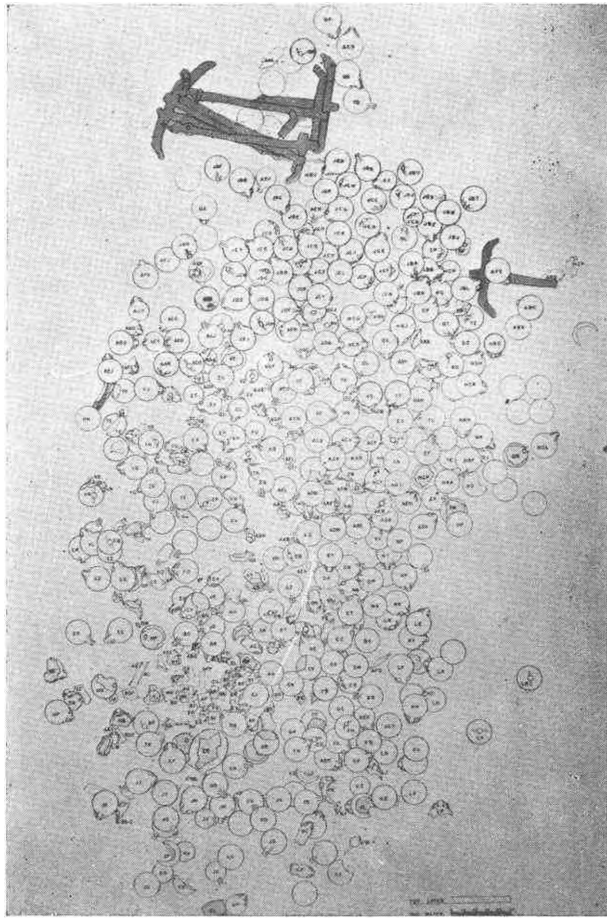
Res. 2



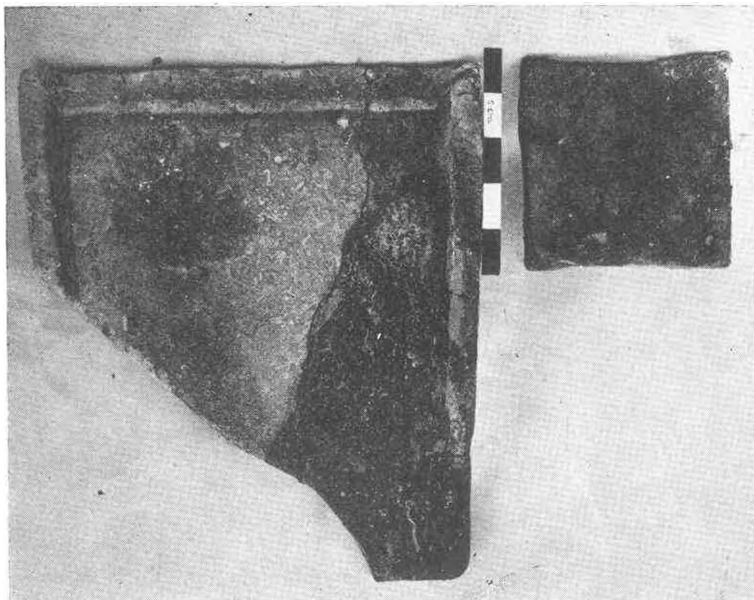
Res. 3



Res. 4



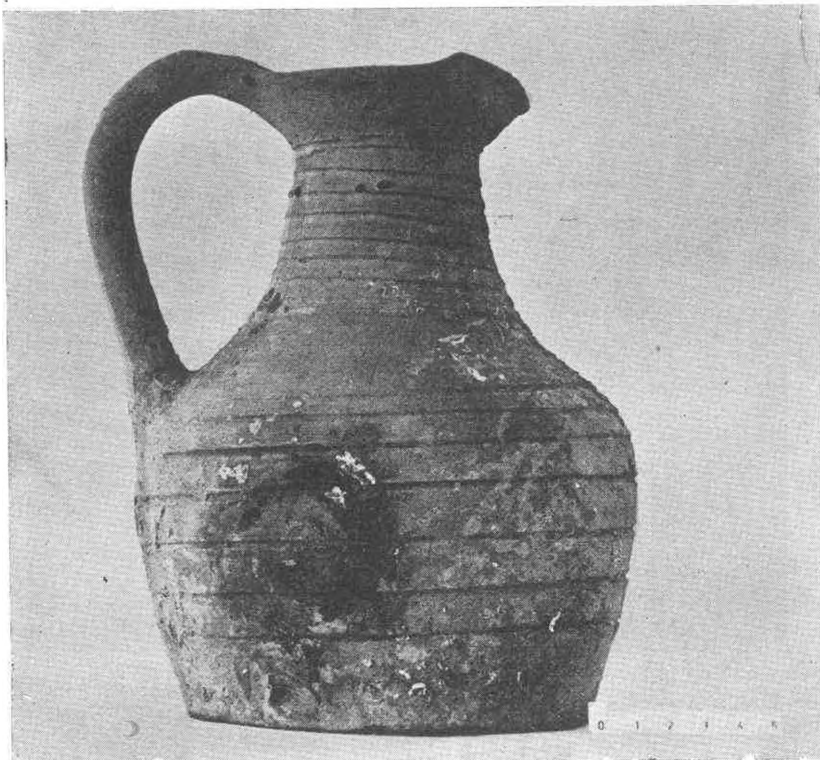
Res. 5



Res. 6



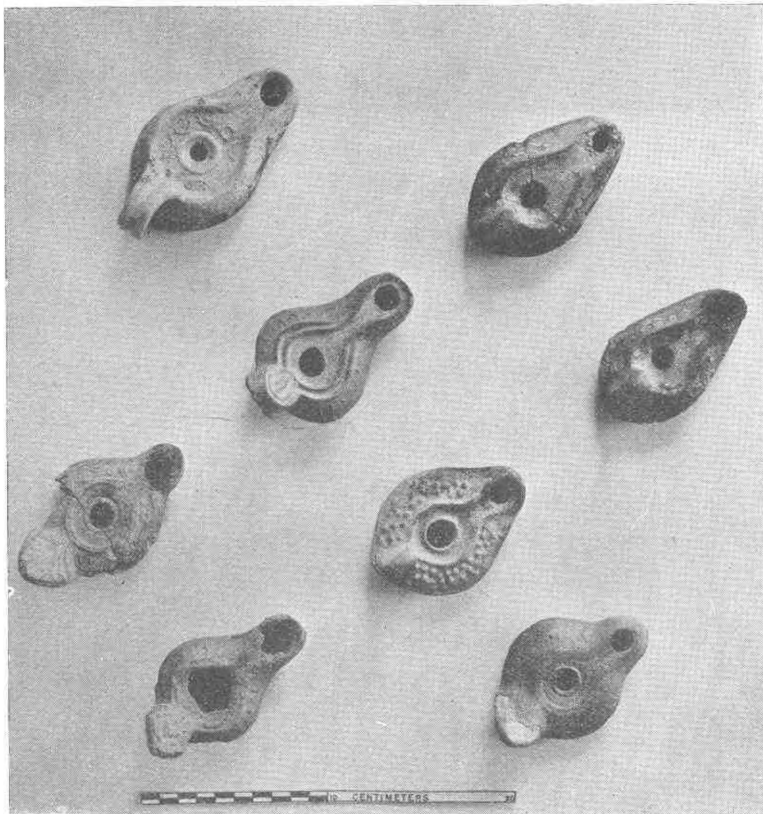
Res. 7



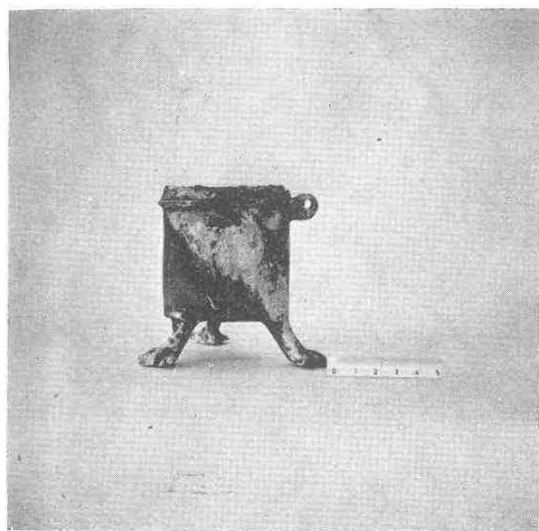
Res. 8



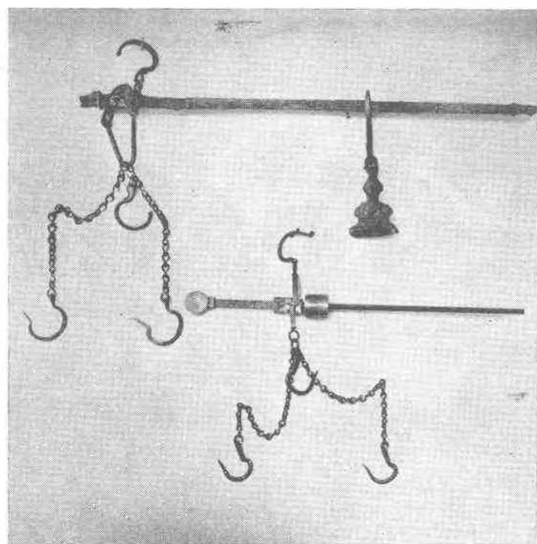
Res. 9



Res. 10



Res. 11



Res. 12



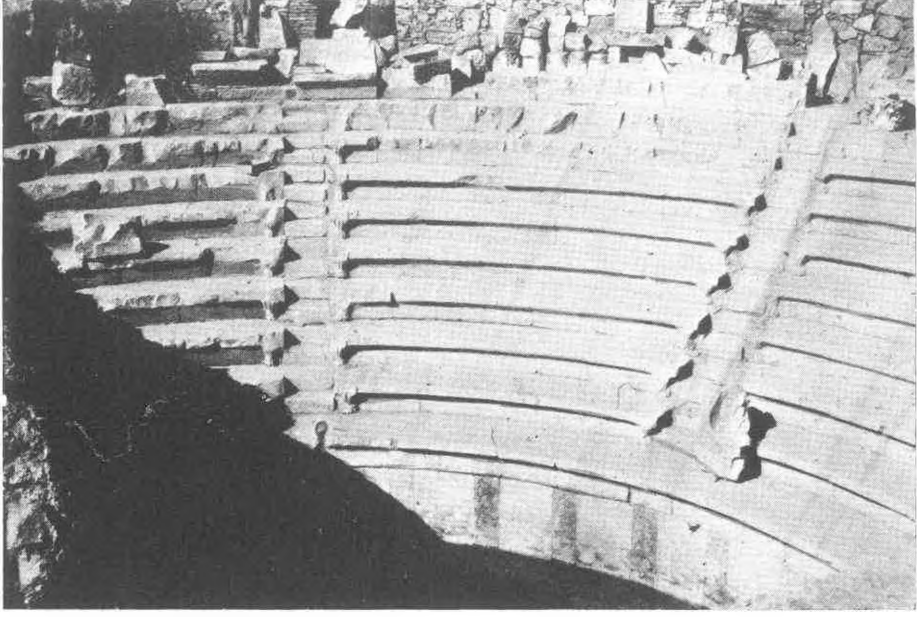
Res. 13



Res. 1 Aphrodisias. Aphrodite tapınağı Bizans devrinde bazilik-kilise çevrildiğinden beması görülüyor.



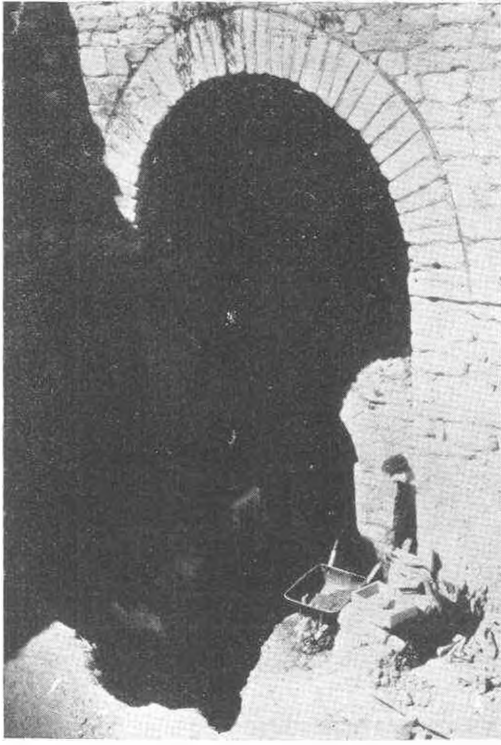
Res. 2 Aphrodisias. Odeon'un sahnesinin (Scaena) bir görünüşü.



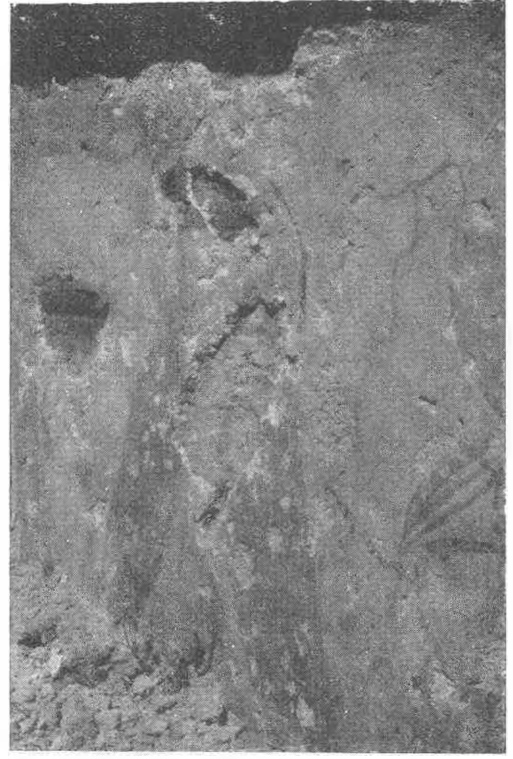
Res. 3 Aphrodisias. Odeion'un dođu cavea'sının bir grnř.



Res. 4 Aphrodisias. Odeion hafriyat esnasında sahnenin 2 kapısı meydana ıkarılmak zere sahnenin pulpitum stnde bir heykel gzlmektedir.



Res. 5. Aphrodisias. Akropol'un eteklerinde meydana çıkarılan çeşme kompleksi. Nymphaeum.



Res. 6. Aphrodisias. Muhabbet - basilikanın Bizans devrinde apsidiini süsleyen freskler.



Res. 7. Aphrodisias. Kuşkale denilen yerde Roma devrine ait sokak ve üç apsidli Bizans devrine ait kilisenin Doğu Apsidi, Önde dir mermer kayık şeklinde çeşme süsü.



Res. 8. Aphrodisias. Aphrodite'nin heykelinin büst kısmı.



Res. 9. Aphrodisias. Aphrodite'nin heykelinin ayak kısmı.



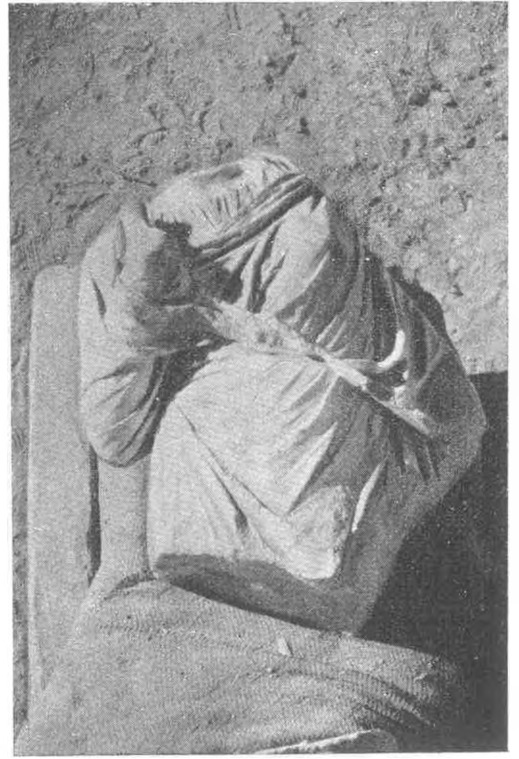
Res. 10. Aphrodisias. Odeion'un sahnesini süsleyen heykellerden biri



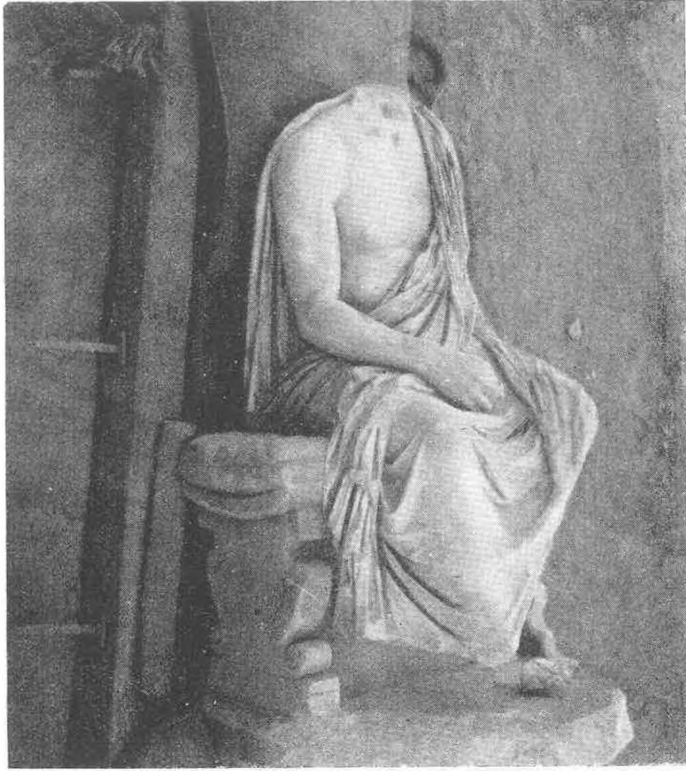
Res. 11. Aphrodisias. Odeion'un heykellerinden biri



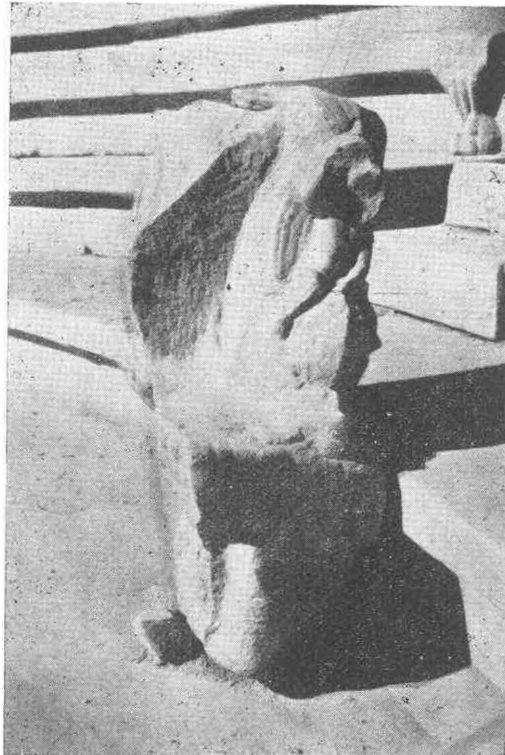
Res. 12 Aphrodisias. Odeion'un oturmuş vaziyette olan filozof tipi heykellerinden biri



Res. 13. Aphrodisias. Odeion'un heykellerinden kadın torsosu



Res. 14. Aphrodisias. Odeion'un oturmuş filezof tipi heykellerinden biri



Res. 15. Aphrodisias. Odeion'un koltuklarından Eros ve yunus balığından süslenmiş bir fragmanı

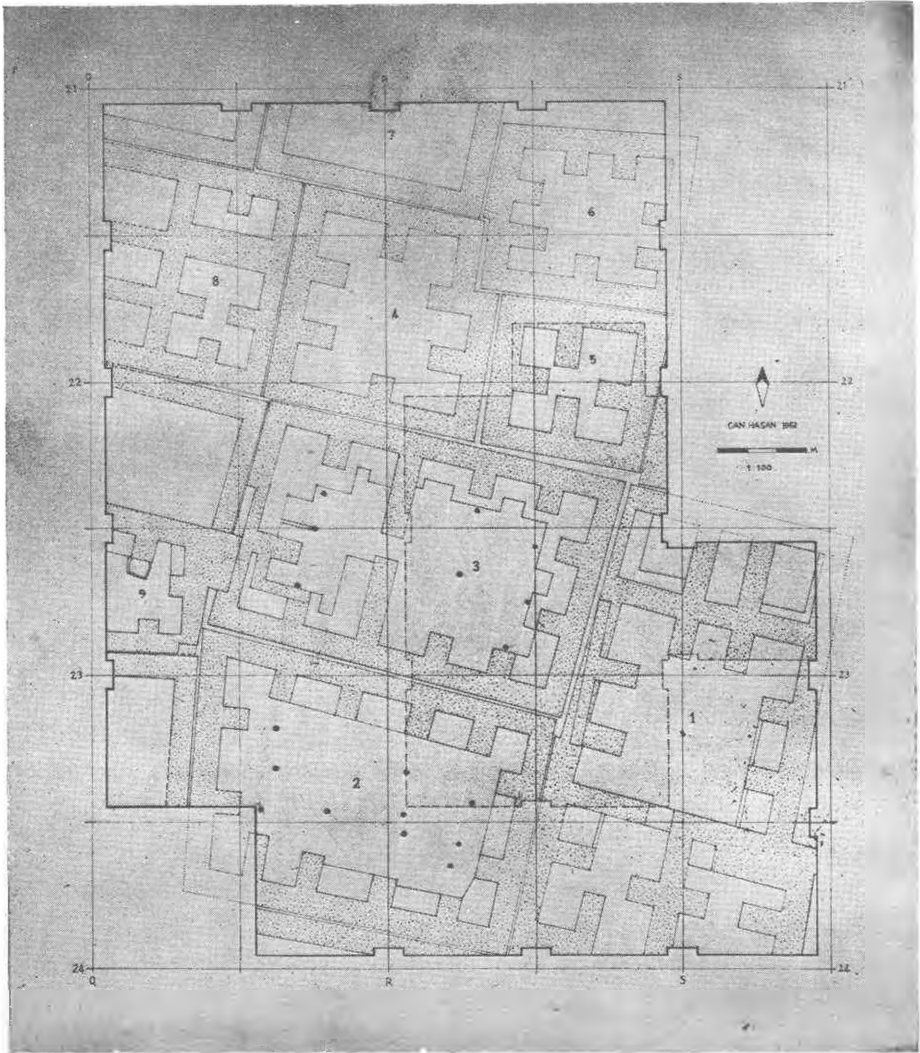


Fig. 1: Can Hasan 1962: Plan of Layer 2 B.



Fig. 2: Late Chalcolithic Marble Figurine; Can /62 /425.

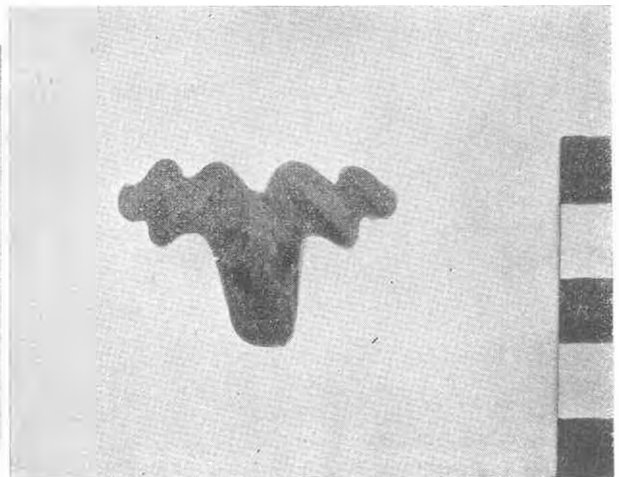


Fig. 3: Ram's Head Pendant: Layer 2 A; Can /62 /186

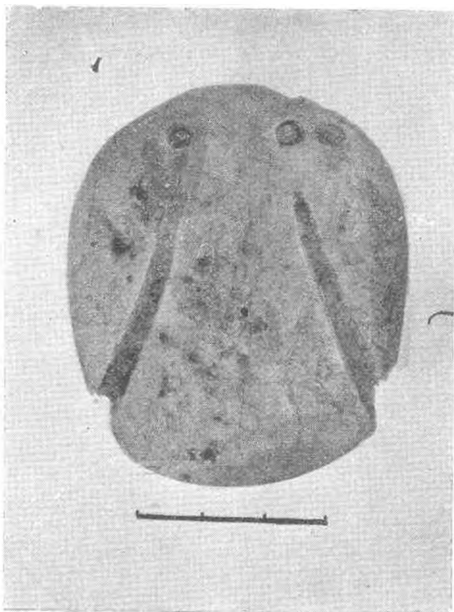


Fig. 4: Shell pendant; Layer 2 A; Can /62 /206.



Fig. 5: Shell Pendant; Layer 2 A; Can /62 /169.

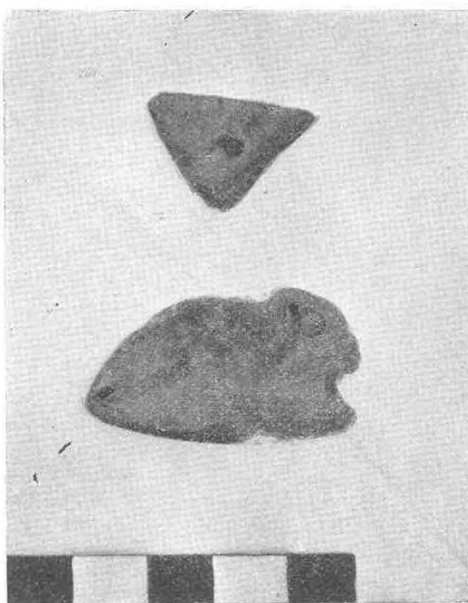


Fig. 6: Shell Ornaments; Layer 2 A; Can /62 /232, 237.

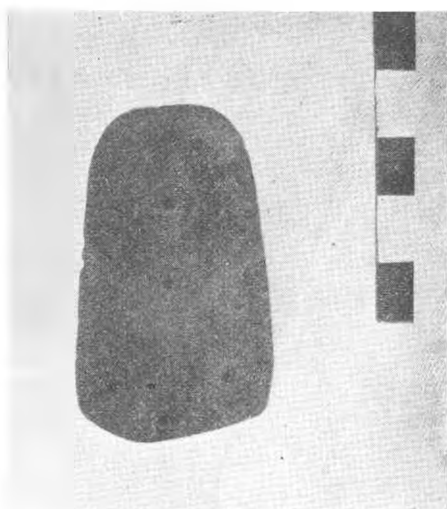


Fig. 7: Stone Pendant; Layer 2 A; Can /62 /193.

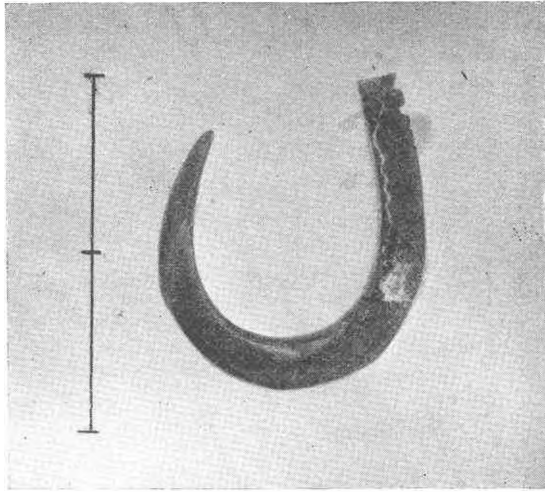


Fig. 8: Bone Fish Hook; Layer 2 A; Can /62 /194.

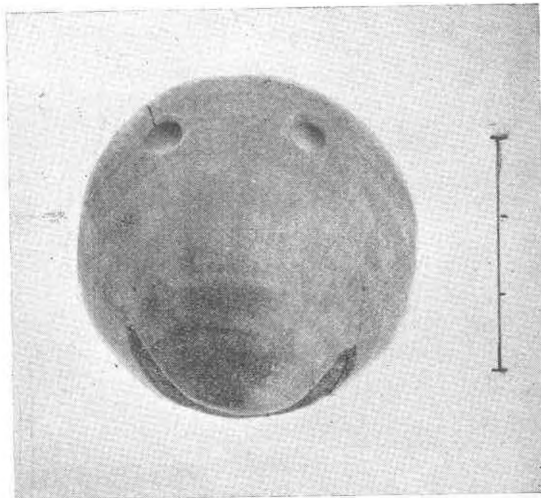


Fig. 9: Decorated Shell; Layer 2 A; Can /62 /181
(Excavations at Sardis in 1962, Footnotes)

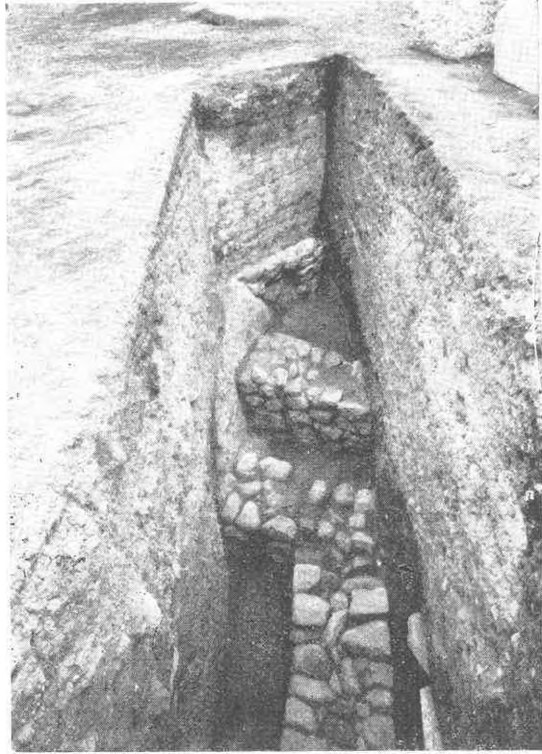


Abb. 1

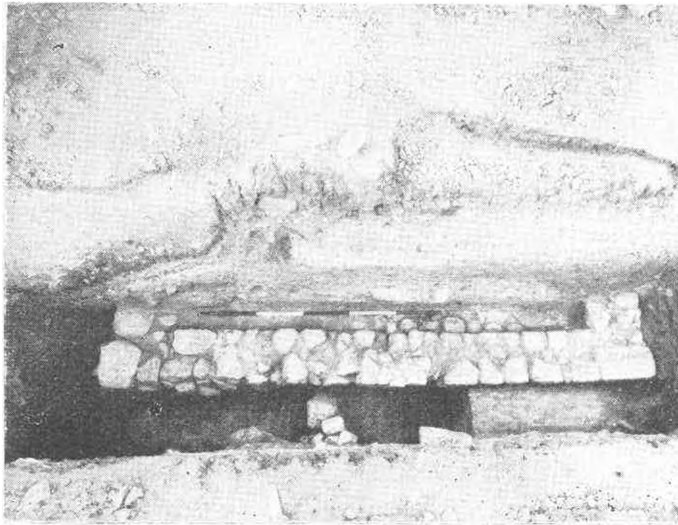


Abb. 2

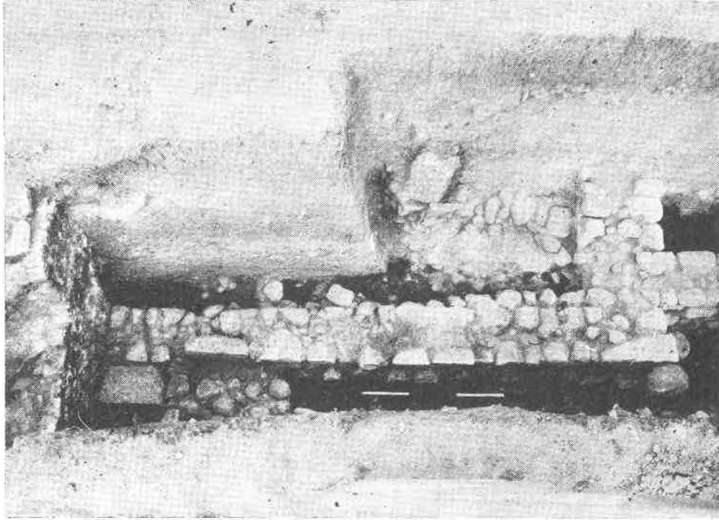


Abb. 3



Abb. 4



Abb. 5



Abb. 6

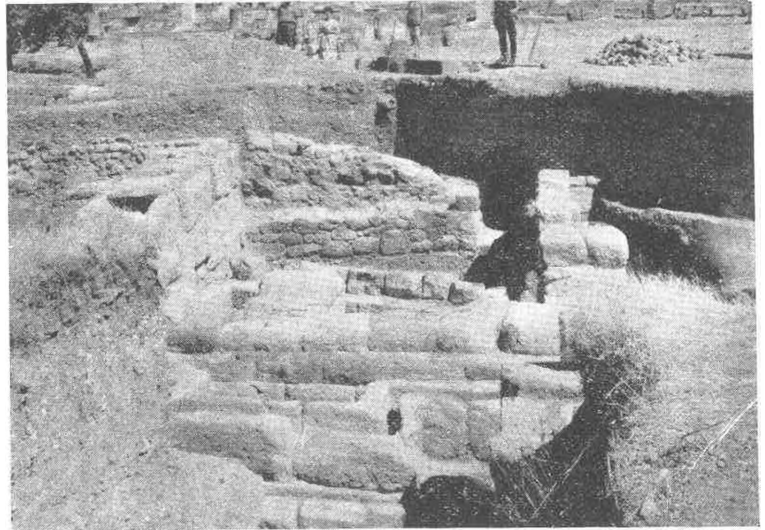


Abb. 7



Abb. 8

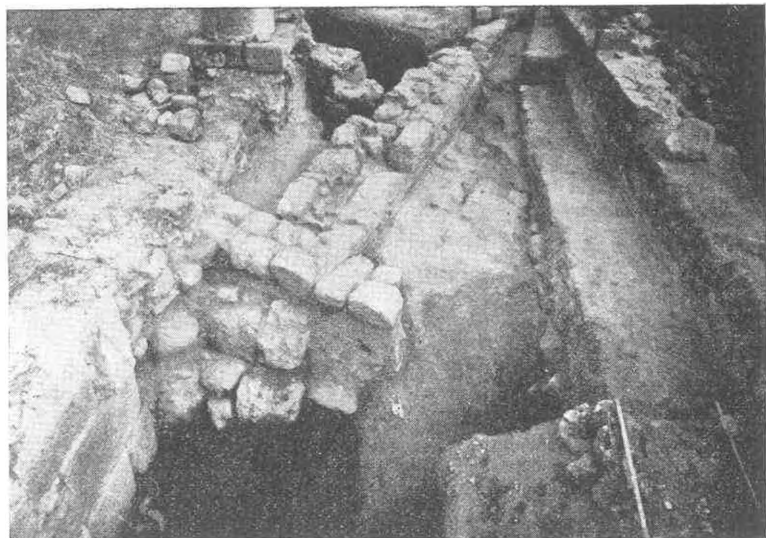


Abb. 9



Abb. 10



Abb. 11

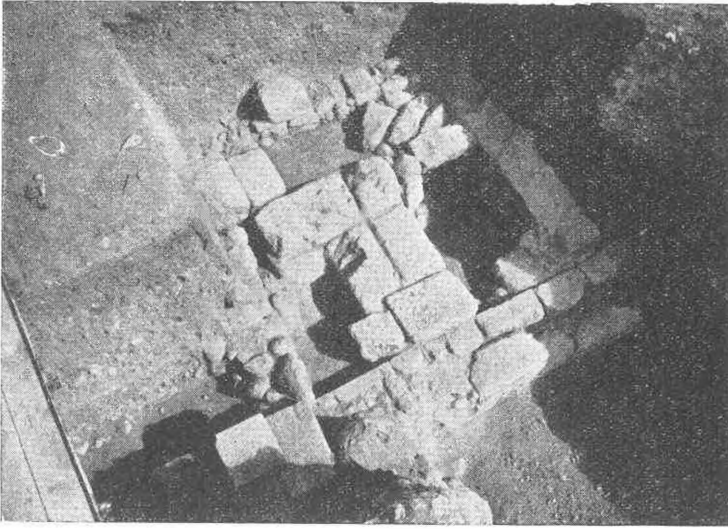


Abb. 12

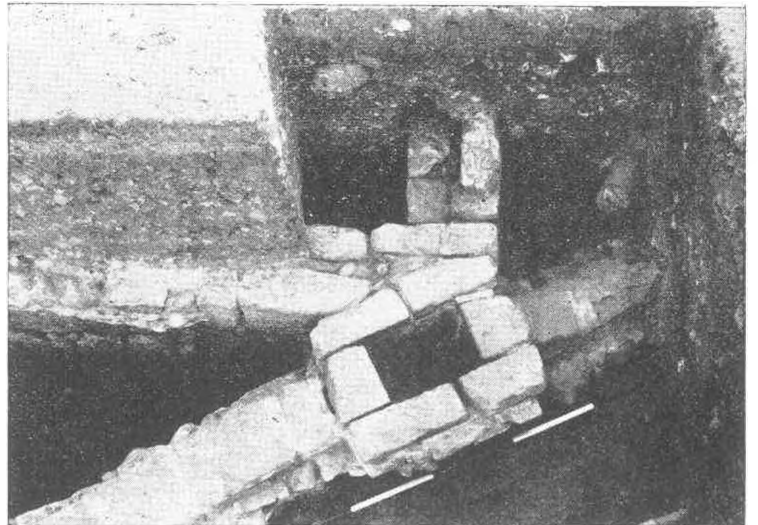


Abb. 13



Abb. 14

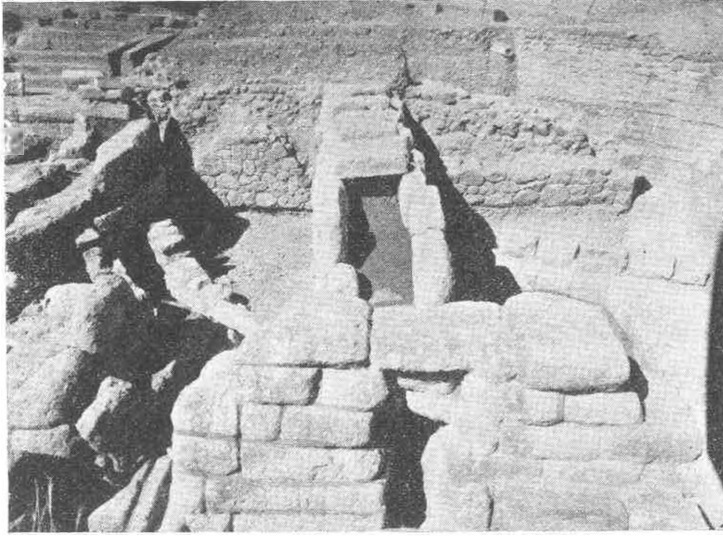


Abb. 15

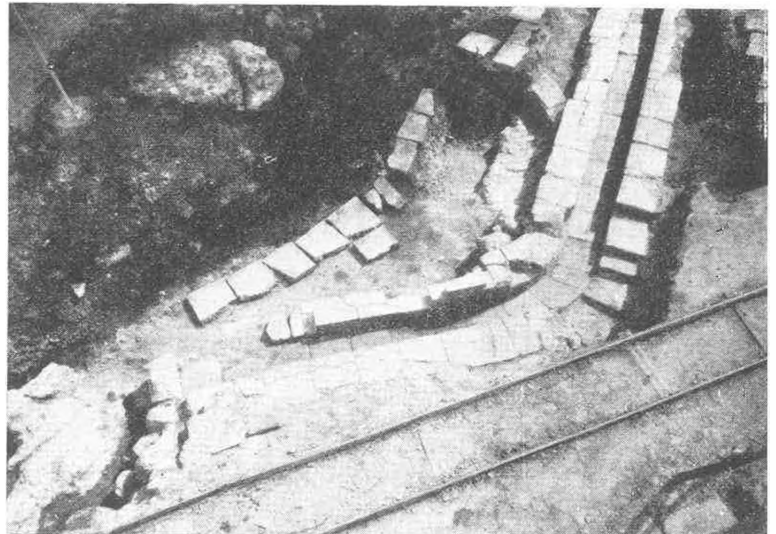


Abb. 16



Abb. 17



Abb. 18

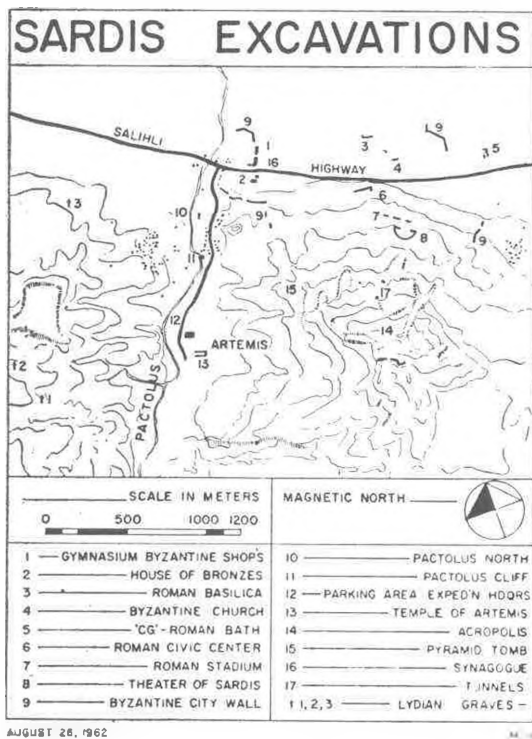


Fig. 1— Sketch plan of Excavation Sectors and Ruins, 1962.

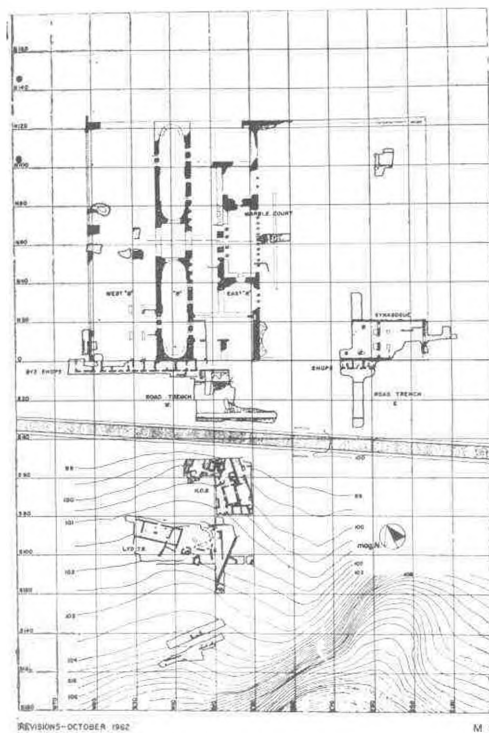


Fig 2—Plan of Excavations along Salihli Highway, 1962.

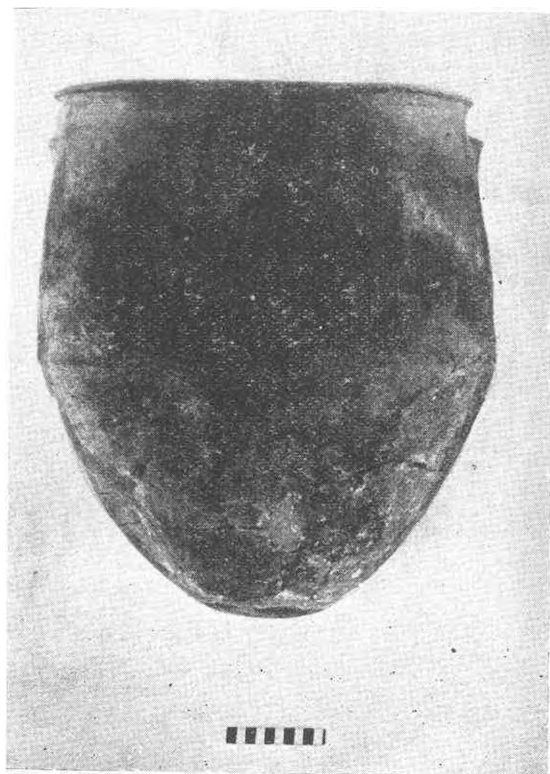


Fig. 3—Pithos from Deep Sounding in “Lydian Trench.”



Fig. 4—Bronze Plaque with Ibex, “Lydian Trench.”

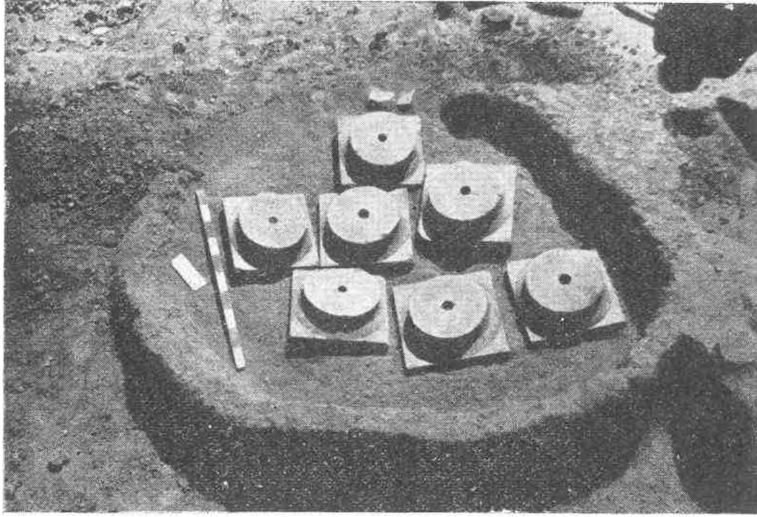


Fig. 5—Hellenistic Doric Capitals, "Lydian Trench."



Fig. 6—"Pactolus North, "View from Northeast on (foreground) "Eagle Room", Hall, "Dolphin Room,"; (center) Persian and Lydian Walls.



Fig. 7—"Pactolus North" Dolphin Mosaic.



Fig. 8— "Pactolus North," Eagle Mosaic.

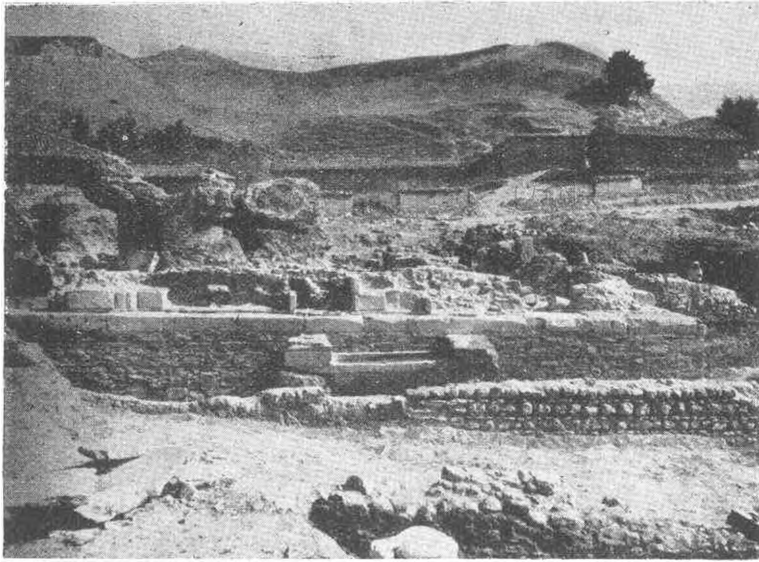


Fig. 9—"Pactolus North." Cemetery Wall and Church "E" from North.

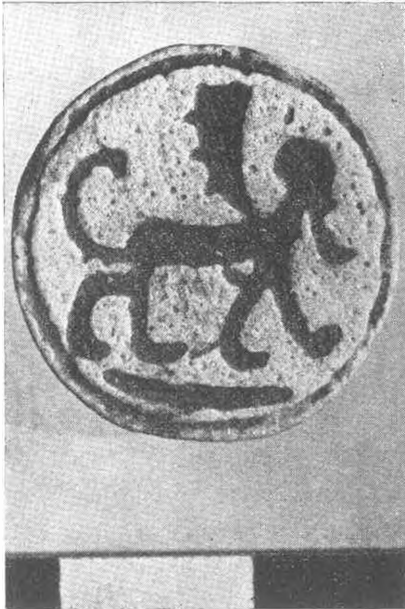


Fig. 10—Phoenician Seal from Lydian Level, "Pactolus North."

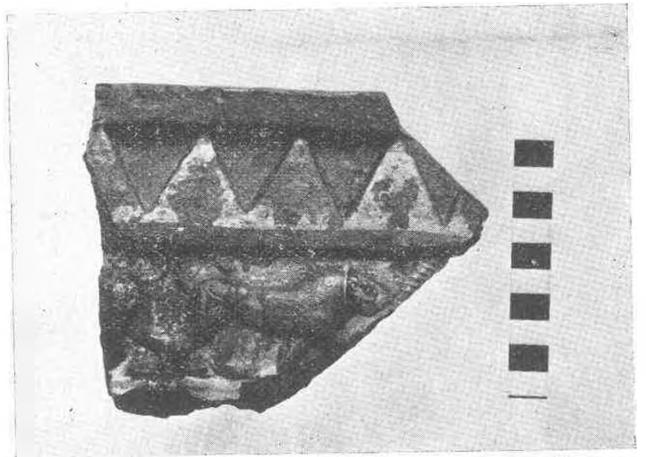


Fig. 11—Lydian Terracotta Frieze, "Pactolus North."

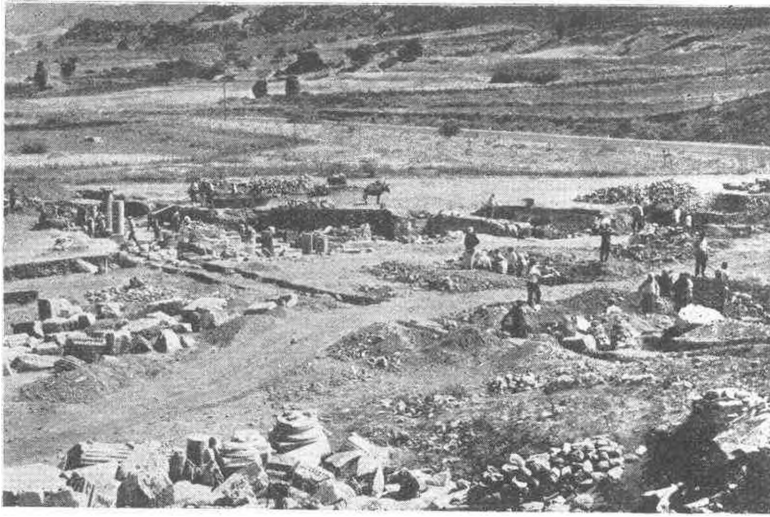


Fig. 12— Synagogue and Byzantine Shops (background)
from Northwest.

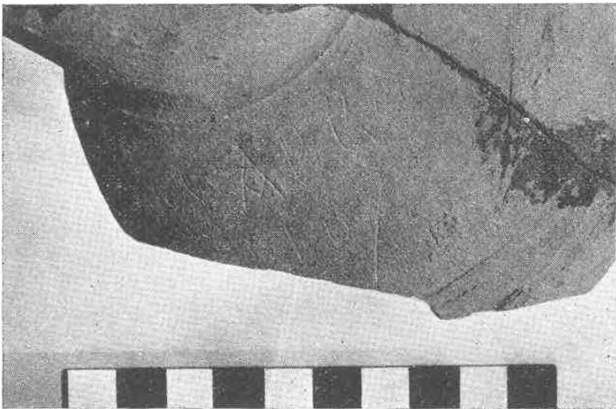


Fig. 13—Graffito with the Name Sabbatios. From
Byzantine Shops.



Fig. 14— Carnelian with Nude Girl, from Outside
"Jacob's Shop."

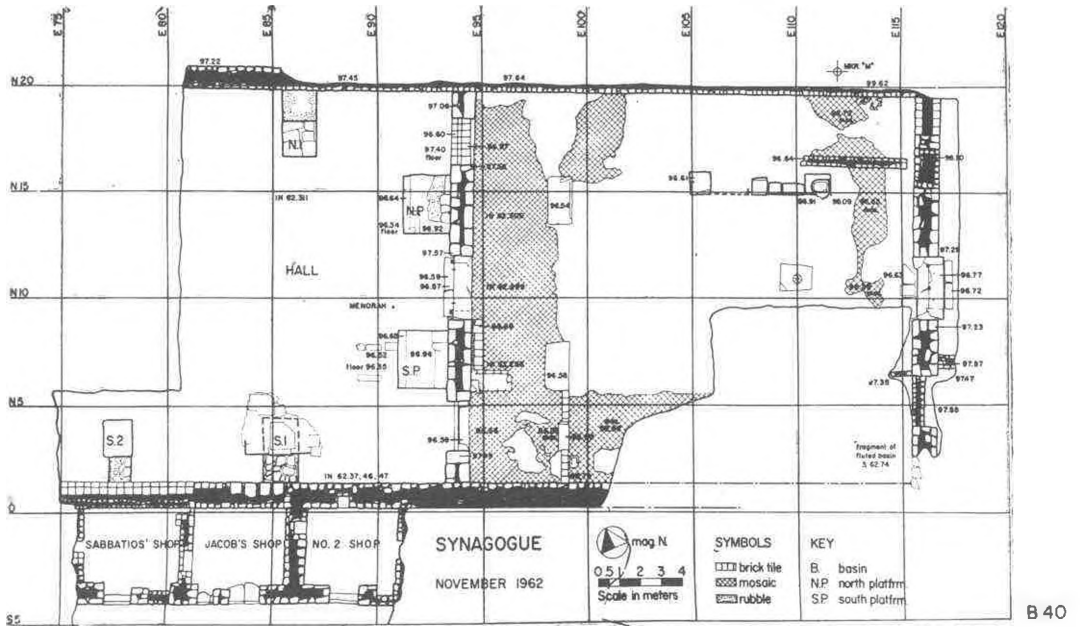


Fig. 15—Plan of Synagogue, 1962.

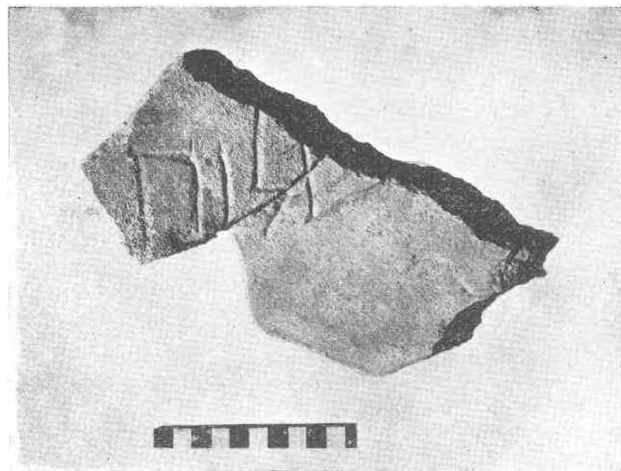


Fig. 16—Hebrew Inscription from Synagogue.

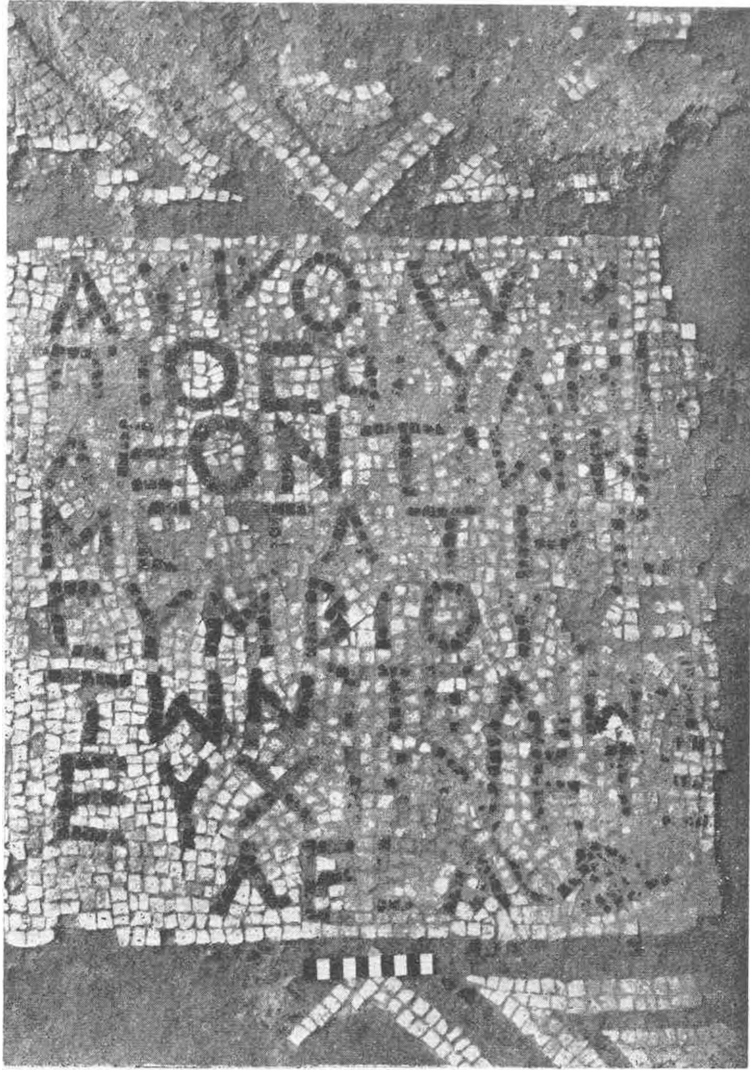


Fig. 17 — Mosaic Inscription in Synagogue



Fig. 18—Lydian Inscription on Stone Found in Synagogue.

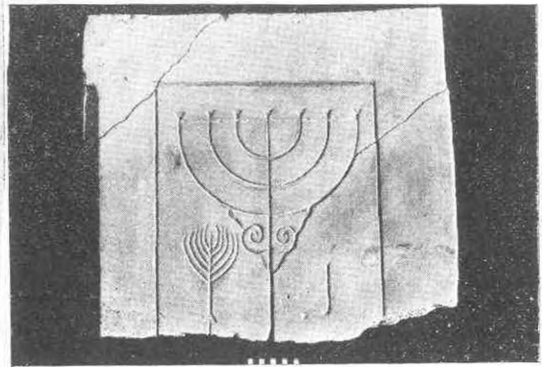


Fig. 19—Marble Relief with Menorah Found in Synagogue.



Fig. 20—Pillster Capital Found in Synagogue.

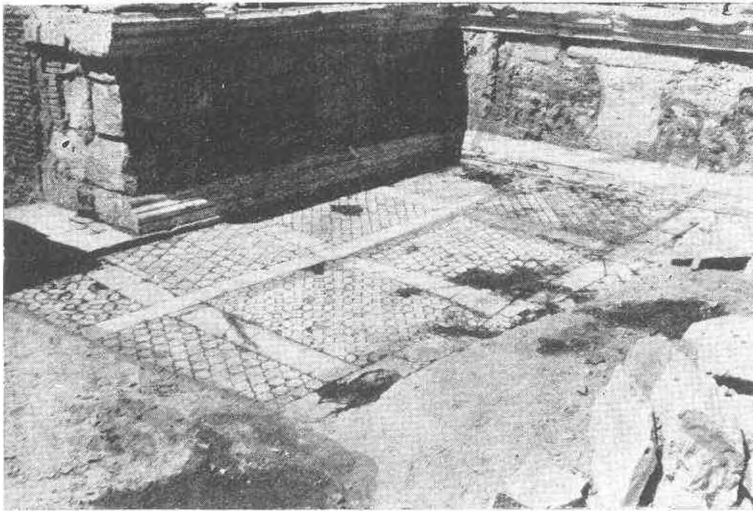


Fig. 21—Opus Sectile Pavement in Southwest Corner of Marble Court, "East B."

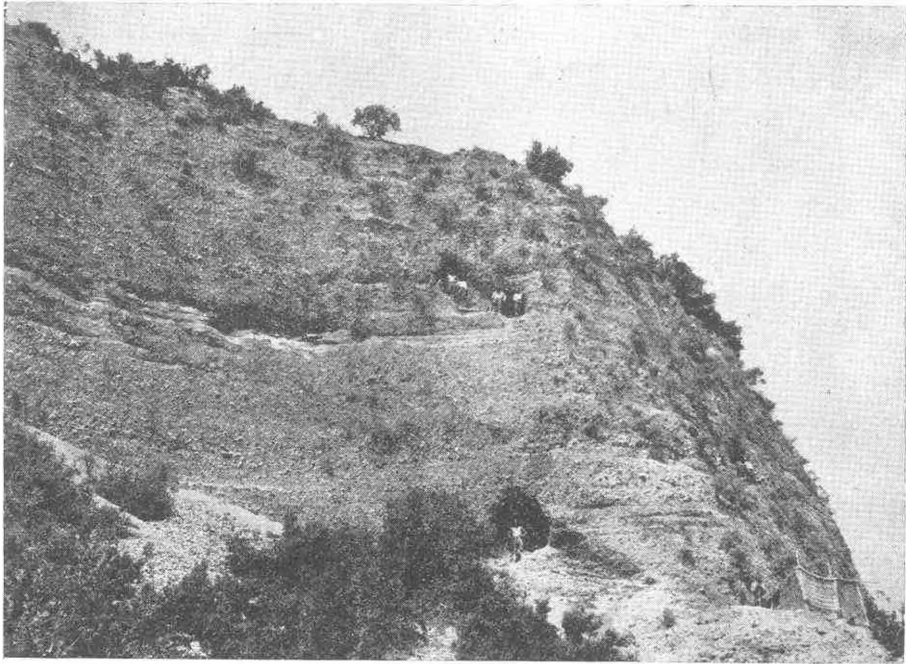


Fig. 22—Tunnels in North Slope of Acropolis, from East.

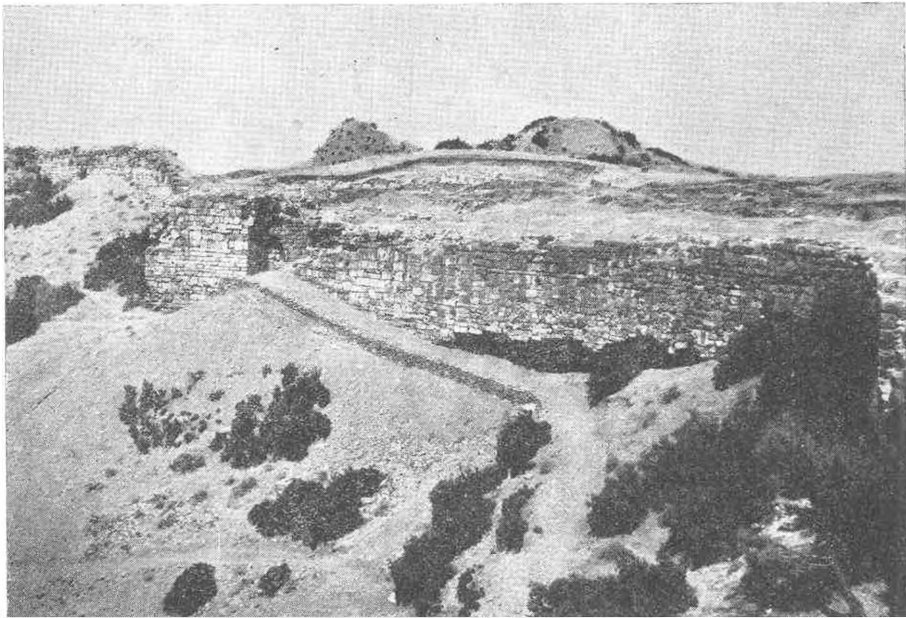


Fig. 23—Acropolis from Southeast. Upper right, Excavations of 1962.



Fig. 24—Lydian Archaic Terracotta Tile from the Acropolis.

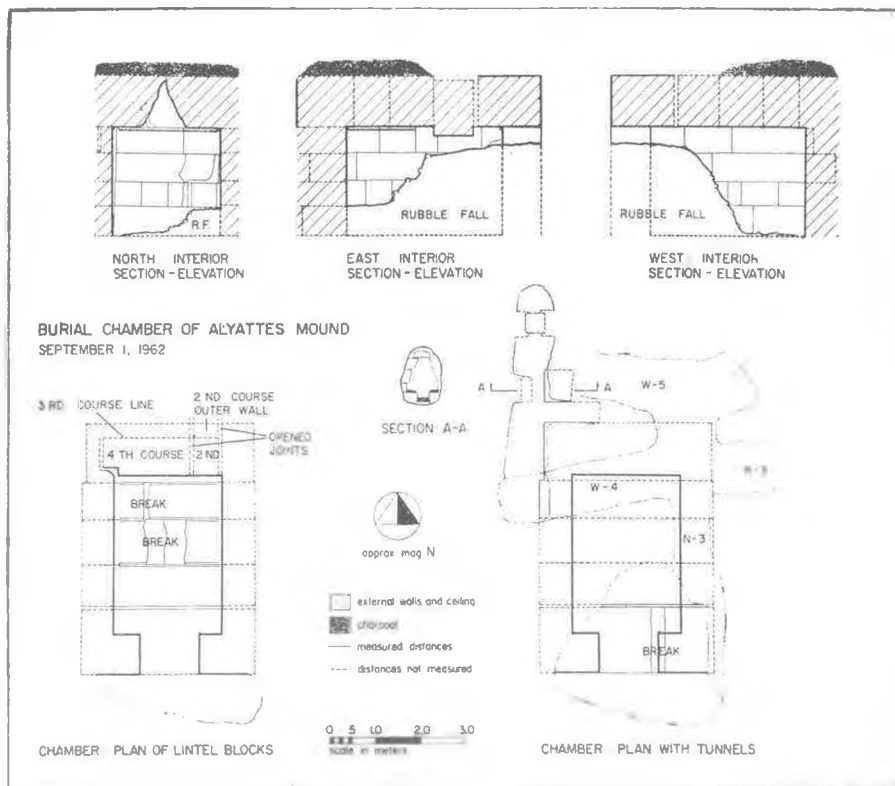


Fig. 25—Bin Tepe, Mound of Alyattes, Marble Chamber, State in August 1962,

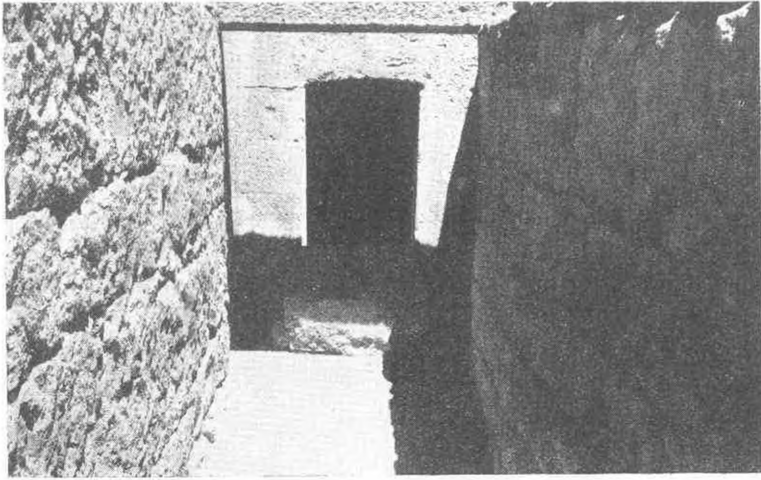


Fig. 26—Bin Tepe, Mound BT 62. 4, View from Dromos to Antechamber and Chamber Door.

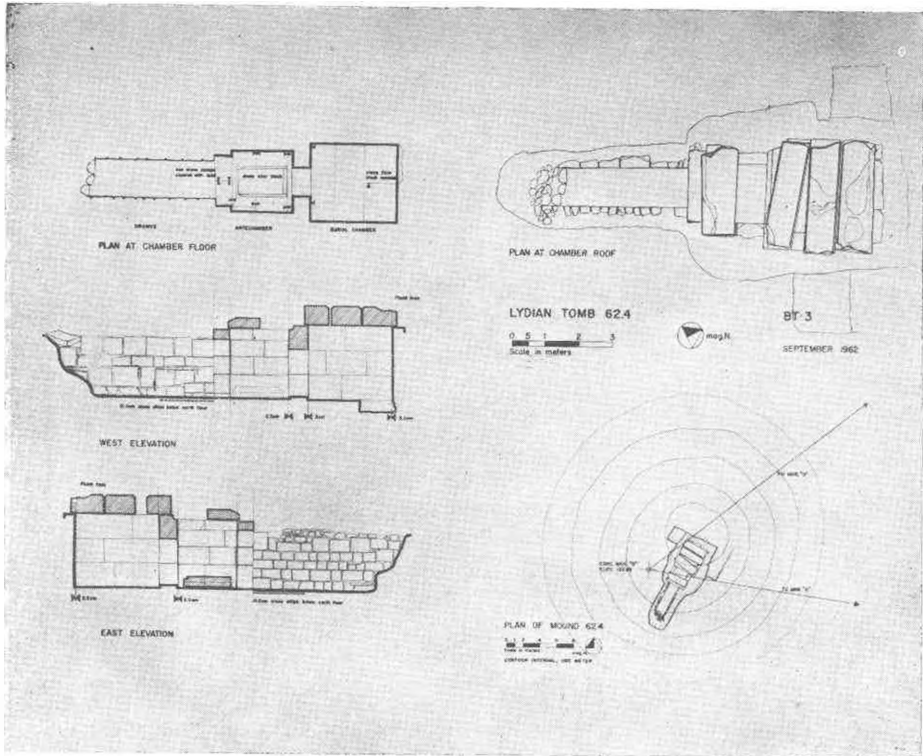


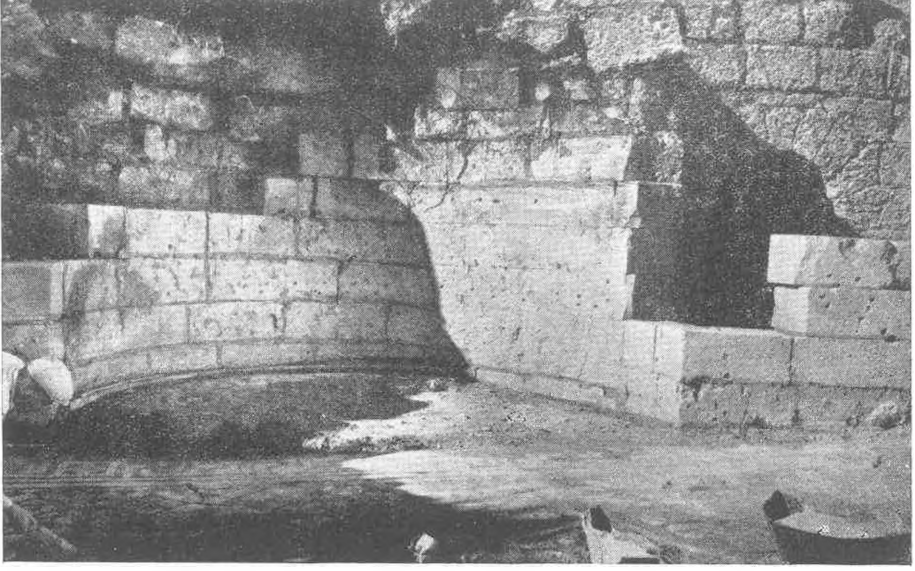
Fig. 27—Bin Tepe, Mound BT 62. 4 Plans of Mound, Plans and Elevations of Chamber Tomb.



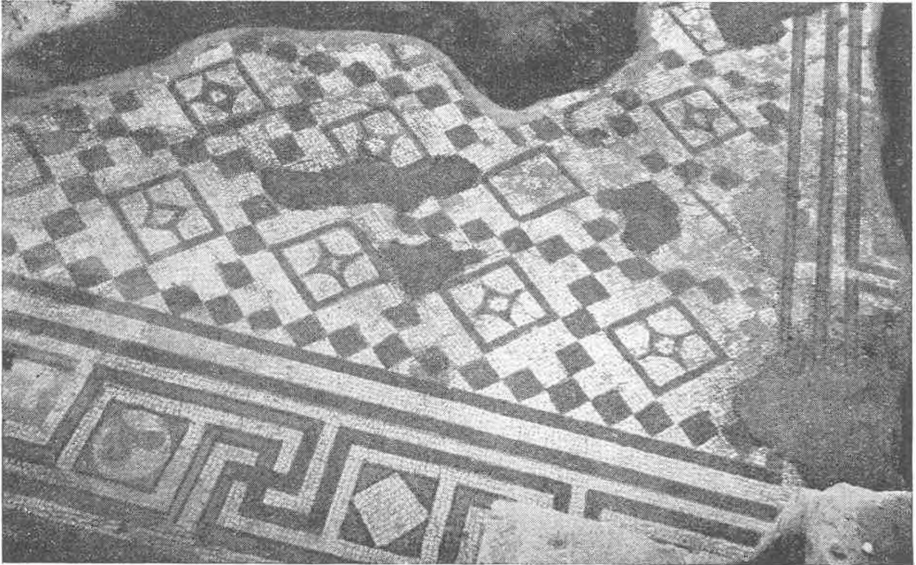
Rer. 1 — Side deniz kenarındaki büyük basilikanın apsidinin önünde bulunan "Synthronon"



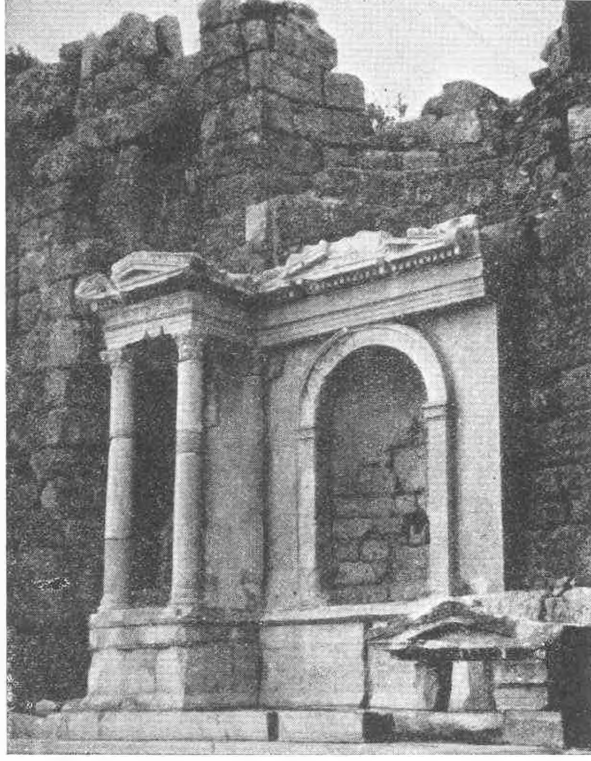
Res. — 2 Basilikanın içinde sonradan yapılmış olan kilisenin kazıdan sonraki durumu



Res. 3 — Tiyatronun arkasındaki eksedra (Solda) tonozlu mckân ve gerisindeki kapı (Sağda)



Res. 4 — Eksedranın önünde bulunmuş olan mozaik döşeme



Bes. 5 — Vespasianus adıtı restore edildikten sonra



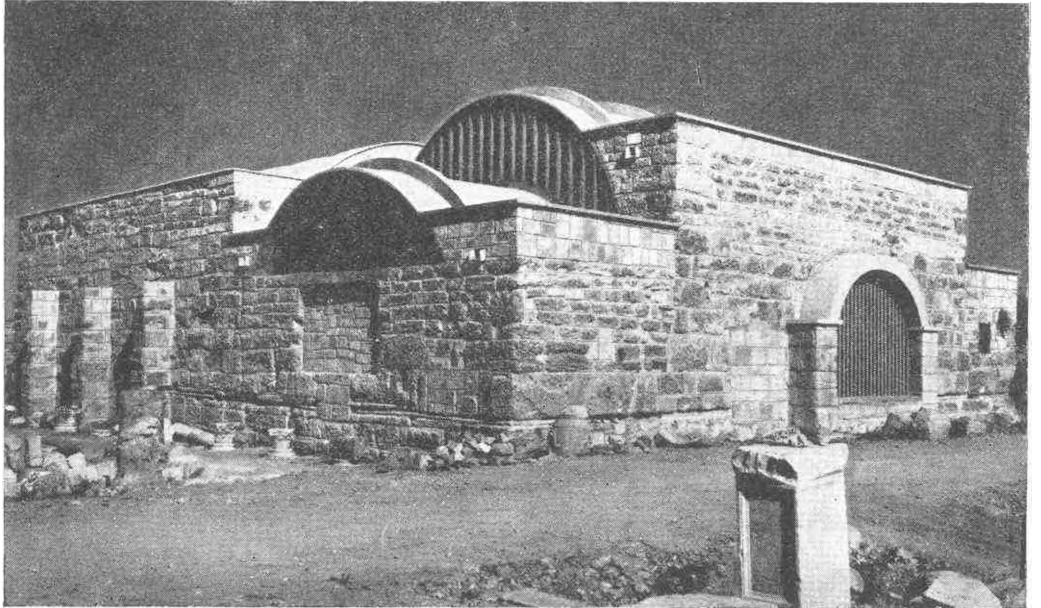
Res. 6 — Sidenin güneyindeki büyük hamamın A mekânı



Res. 7 — Büyük hamamın A mekânının ortasında duran kolonod'a ait friz parçası



Res. 8 — Aynı kolonod'a ait diğer bir friz parçası



Res. 9 — Side hamam müzesinin dış manzarası



Fig. 1 — Le temple de Létó



Fig. 2 — Fouille du Létóon. Atrium d'une basilique datant de la dernière période byzantine



Pl. 1 — Nort porch south wall an angel printed
od the stone



Pl. 2 — North porch. North wall Head of the
prophet Job.



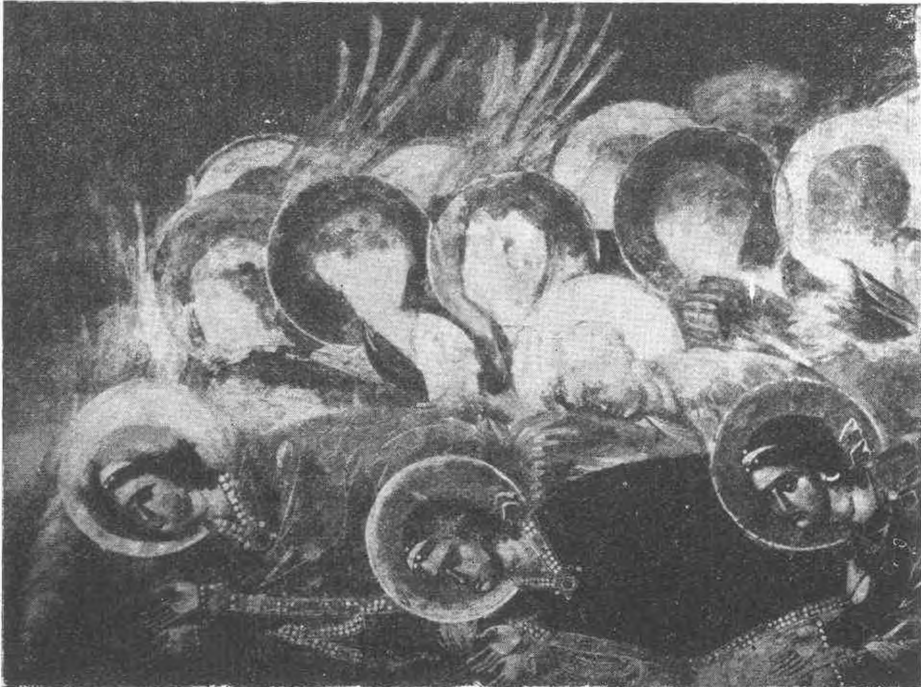
Pl. 3 — North porch. North wall A prophet



Pl. 4 — North porch North wall the angel in the burning bush



Pl. 5 — Bay Muhittin Uysaldir at work colouring in damaged areas of the procession of angels in the cupola



Pl. 6 — Cupola. Figures from the south side of the procession of angels adoring christ



Pl. 7 — The cupola. Figures form the south side of the procession of angels adoring christ



Pl. 8 — South west pendentive Figure of christ from the Baptism



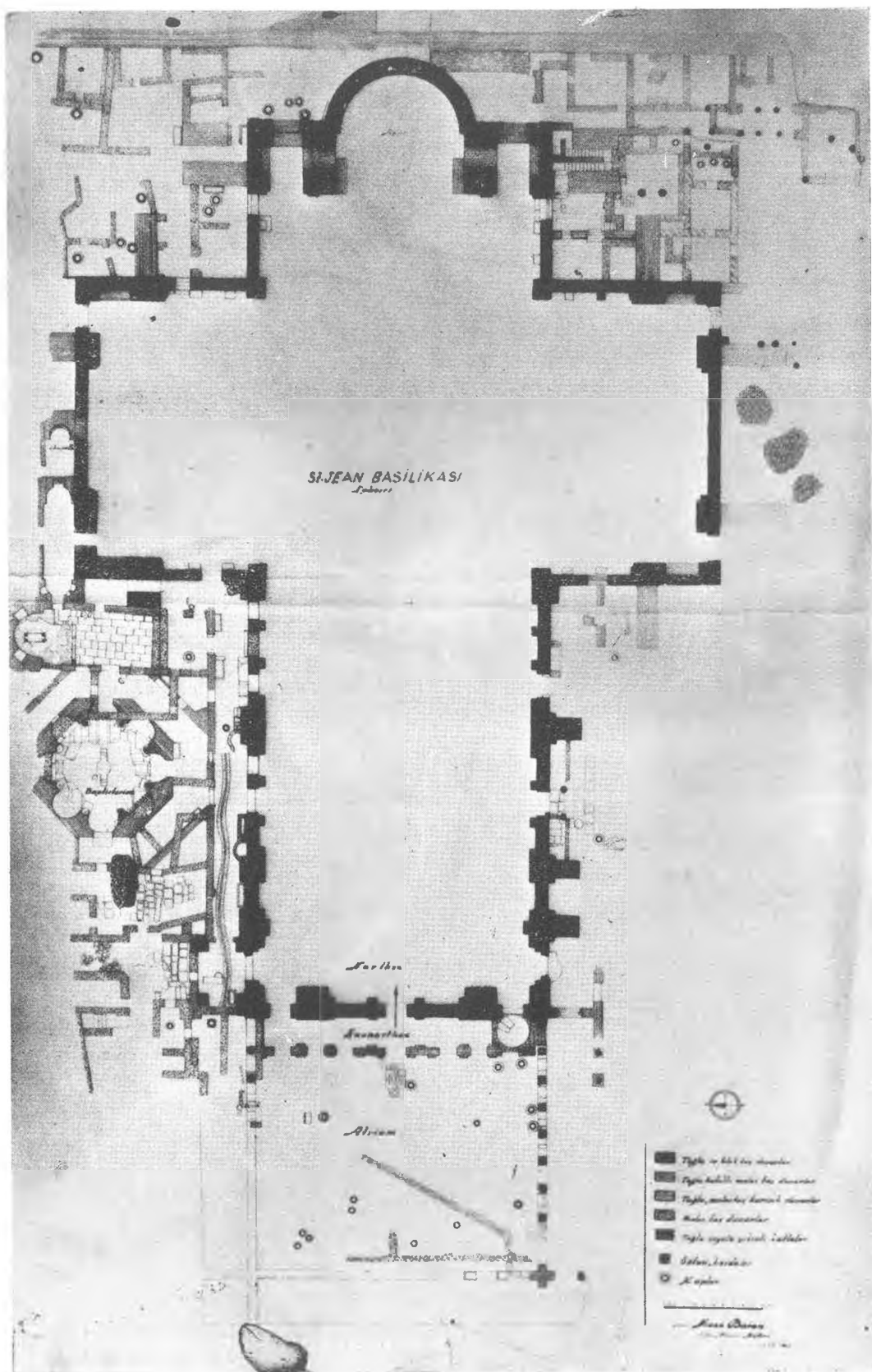
Pl. 9 -- South East pendentive Figure of Saint John



Pl. 10 — South East pendentive. The Anastasis



Pl. 11 — The painted tomb portrait of Niketas



Plán 1 —



Res. 1—Basilikanın apsisinin güneyindeki granit sütunlu sundurma



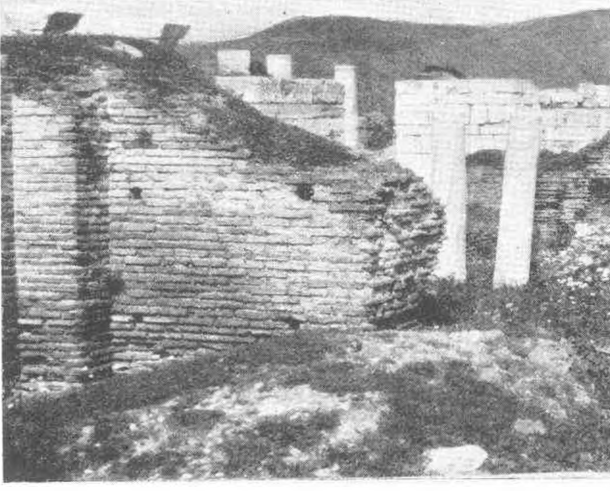
Res. 2— Çeşme girinti (niş) sinde renkli boyalarla çizilmiş haç



Res. 3—Tuğla hatıllı duvarlardan bir örnek.



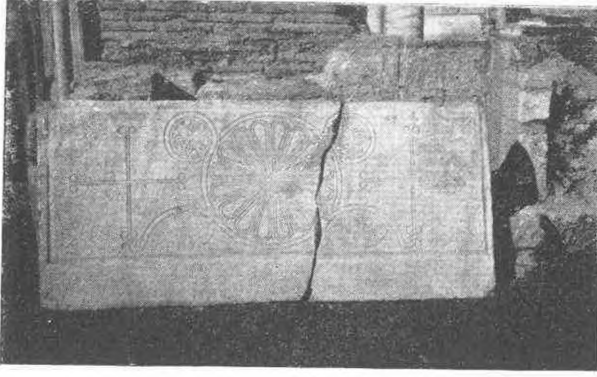
Res. 4—Salt moloz taş duvarlardan bir örnek.



Res. 5—Basilikanın ana duvarlarından salt tuğla örgülü bir örnek.



Res. 6—Apsisin hemen kuzey bitişiğinde ana duvara desteklik eden (gerideki) tuğla hatlı kütle duvar.



Res. 7—Basilikanın güney bitişiğinde bir mezar ve onun önünde korkuluk lavhası.



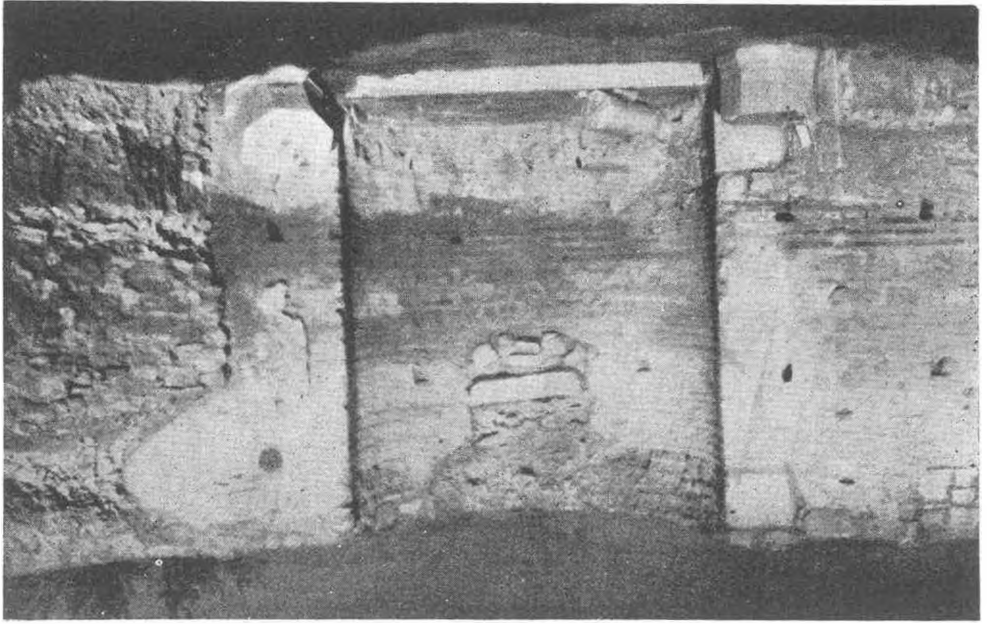
Res. 8—Döşeme taşı olarak kullanılmış Jüstünien öncesi kiliseye ilgin sütun başlıkları.



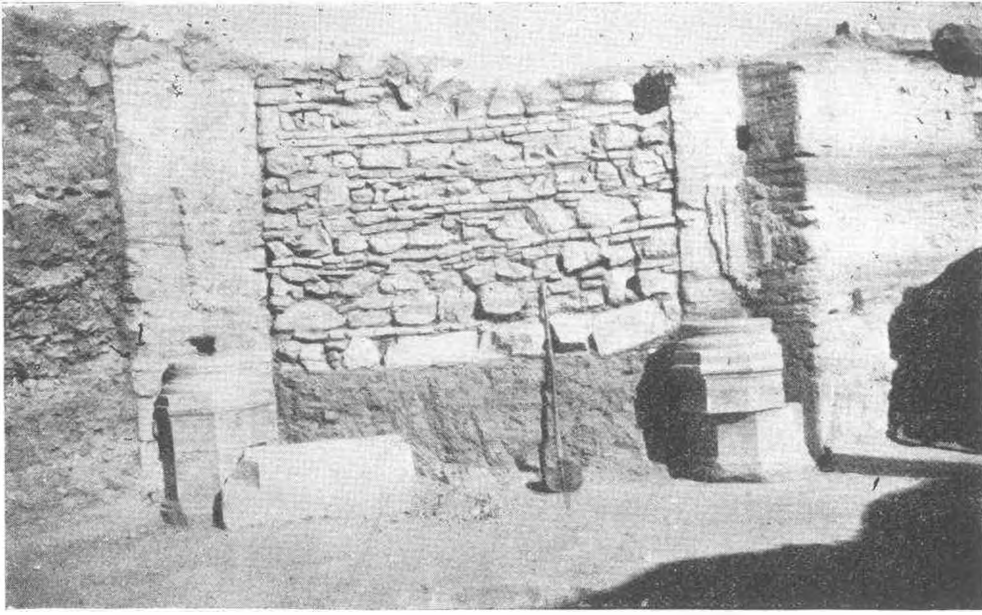
Res. 9—Atrium'un güney sundurması. Sol berideki sütun yerli yerinde bulunmuştur. Gevedikler yatırken dikilmiştir



Res. 10—Atriumda yüze çıkan küplerin yükselti ayrılıkları (1, 2, 3,)



Res. 11—Babtisterionda bir girinti ve sonradan doldurulmuş pencere.



Res. 12—Babtisterionda moloz taş duvarla örölmüş bir girinti ve köşelerdeki sekizgen postamentler.



Res. 13—Basilikanın kuzey kanadının bitiřiğindeki schapel'in apsisinde bir Azizin duvar resmi.



Res. 14—Başka bir Aziz resmi (Sağ omuz başında "Ο ΑΠΟΣΤΟΛΟΣ ΤΕΟ., yazılıdır.



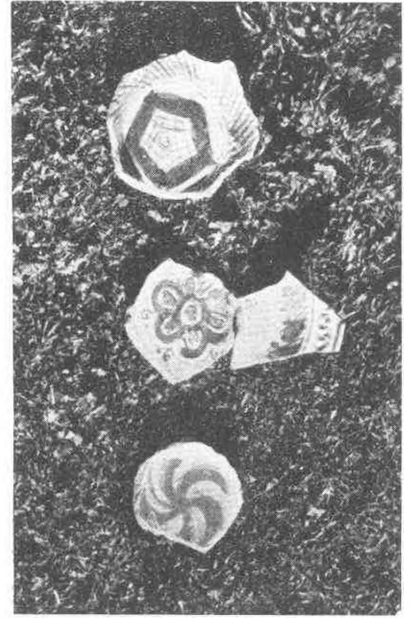
Res. 15—Başka bir Aziz resm



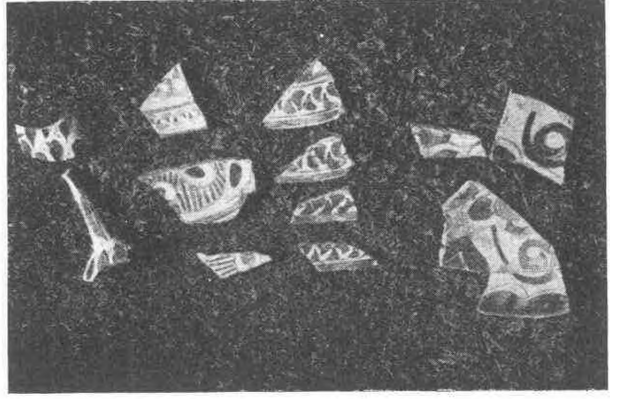
Res. 16—Basilikanın kuzey kanadı ve kuzey doğu köşesi. Sütunlar yeni dikilmiş onların gerisi yeni kazılmıştır.



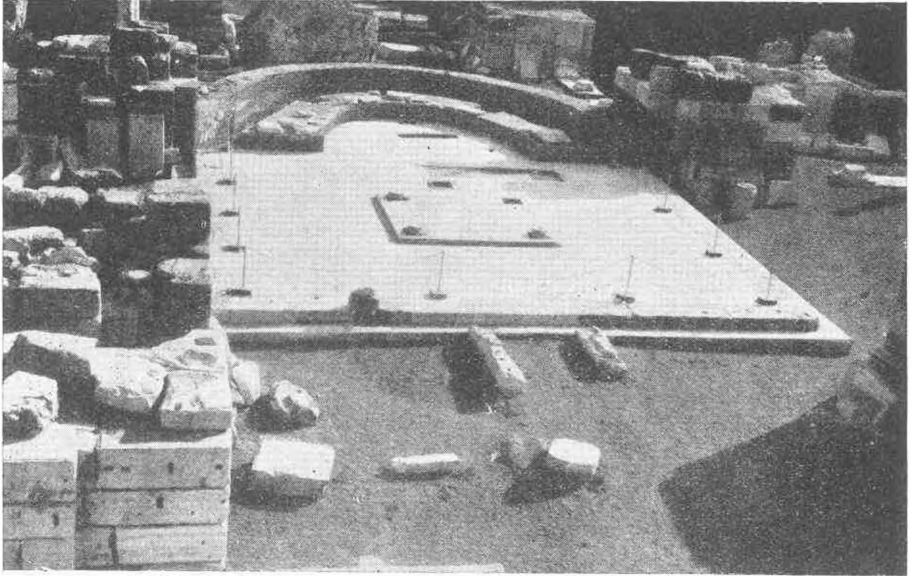
Res. 17—Pişmiş topraktan yapılmış Bizans çağı kuşlu tabak



Res. 18—(3 adet) St. Jean Basilikasında bulunan Türk keramikleri



Res. 18. (3 adet) St. Jean Basilikasında bulunan
Türk keramikleri



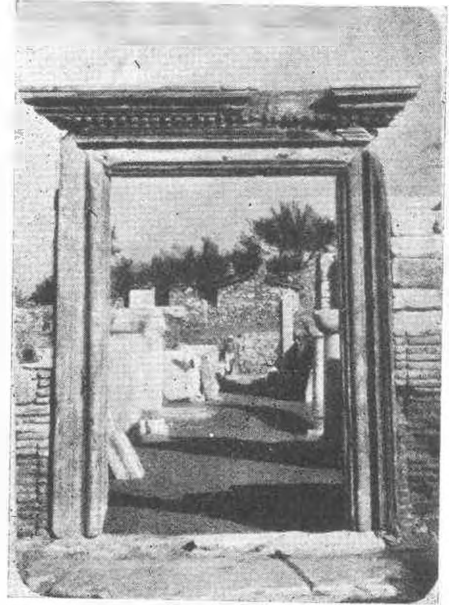
Res. 19—St. Jean Basilikasında mezar alanı, Yeniden mermer düşenmiş, gerisindeki
cyntronun duvarları I, I, 5 m. yükseltilmiş, mezarlar ve onlara geçit
veren giriş onarılmıştır.



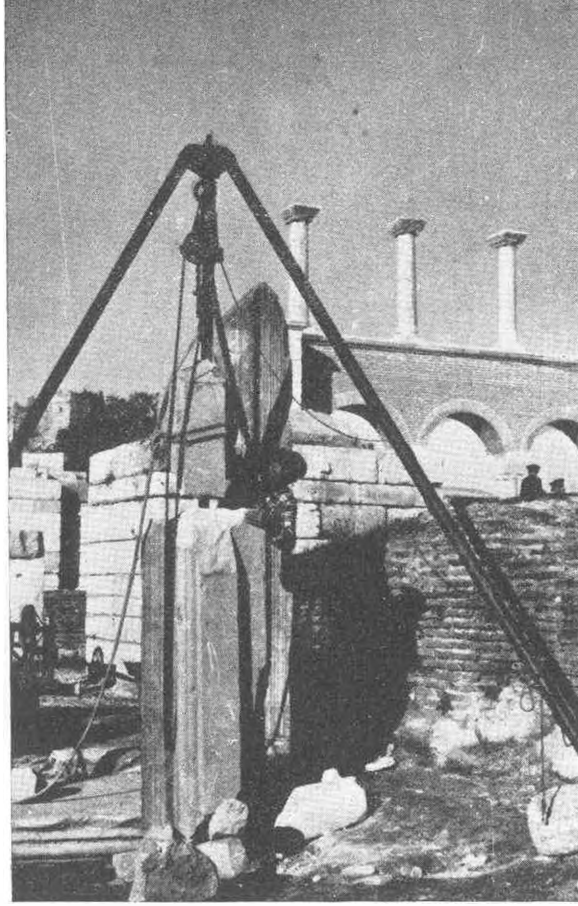
Res. 20—Parça parça bulunmuş korkuluk lavhalarından biri akemi ile yapıştırılırken



Res. 21—Dikey ve yatık kapı söveleri demir kenetlerle tutturulmuştur.



Res. 22—Narteksin güney kapısı onarıldıktan sonra



Res. 23 — Tamamlanmakta olan mermer kapı sövesi Demir kenetlerle ekleniyor, Akemi ile yapıştırılıyor