



Figure 1 — The northeastern section of the mandra after the excavation.

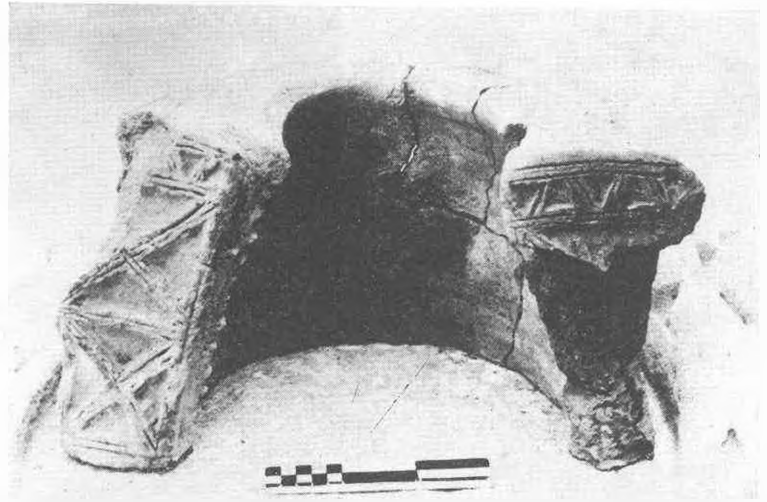


Figure 2 — Hearth found in compartment 7.

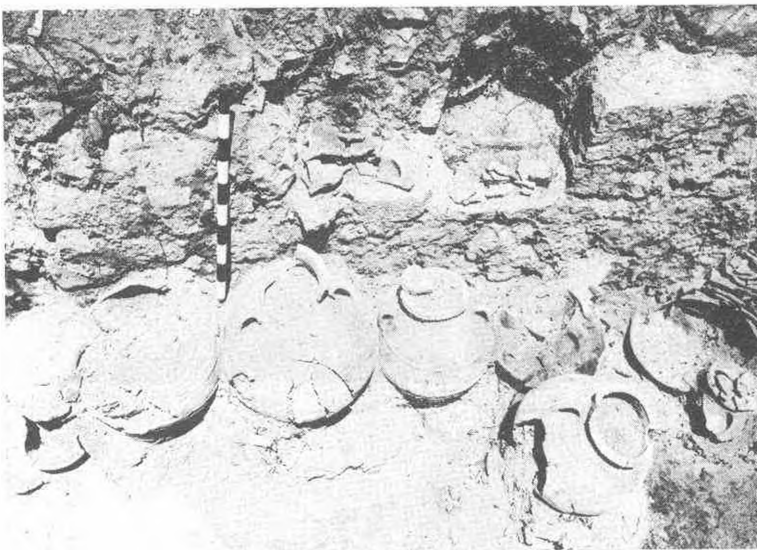


Figure 3 — Storage compartment.



Figure 4 — Southwestern section of the mandra.

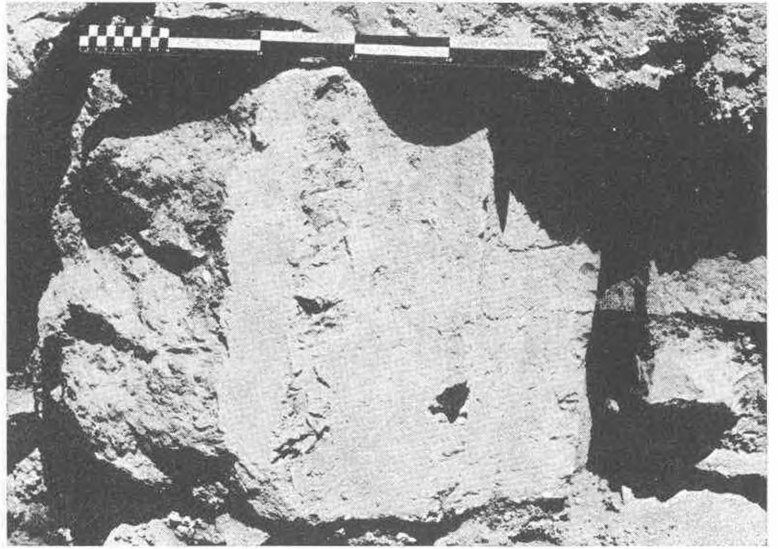


Figure 5 — Drum of Doric column built into the southwest wall.

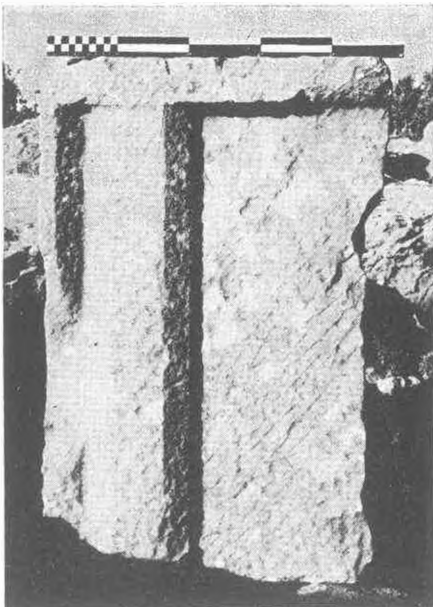


Figure 6 — Fragment of Doric frieze.



Figure 7 — Base matching Corinthian capital.

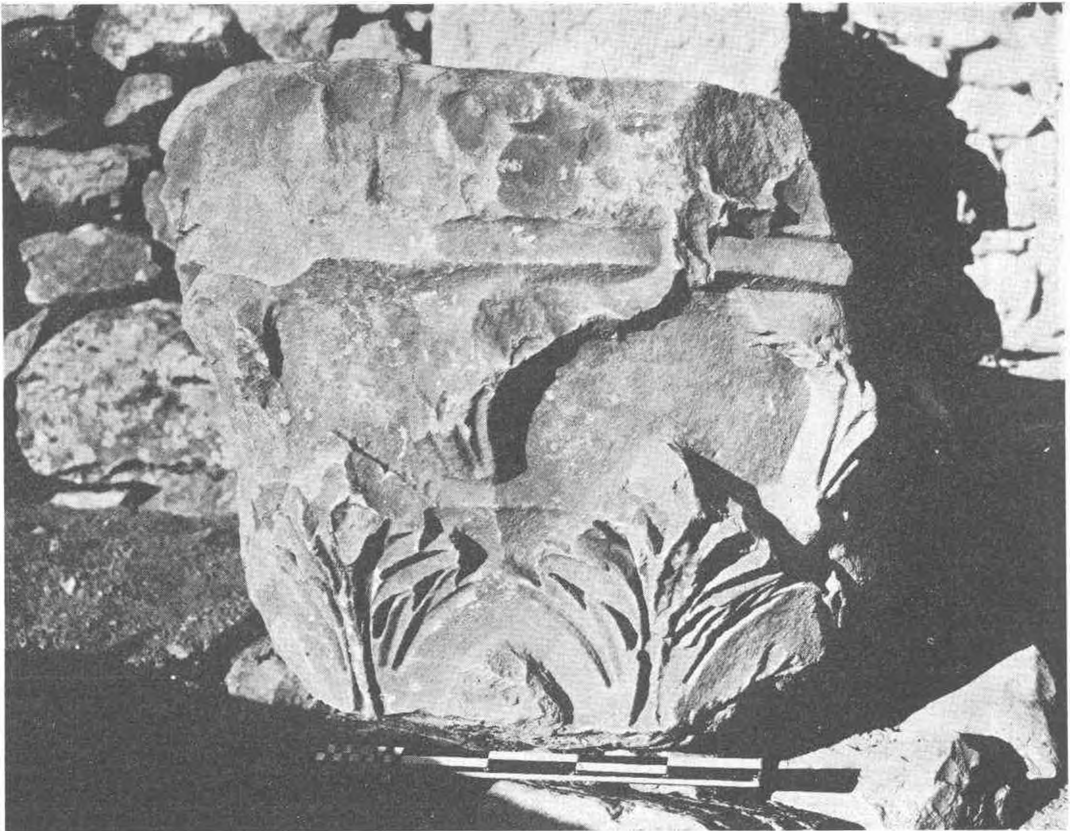


Figure 8 — Corinthian capital built into the north-western section of the main wall.

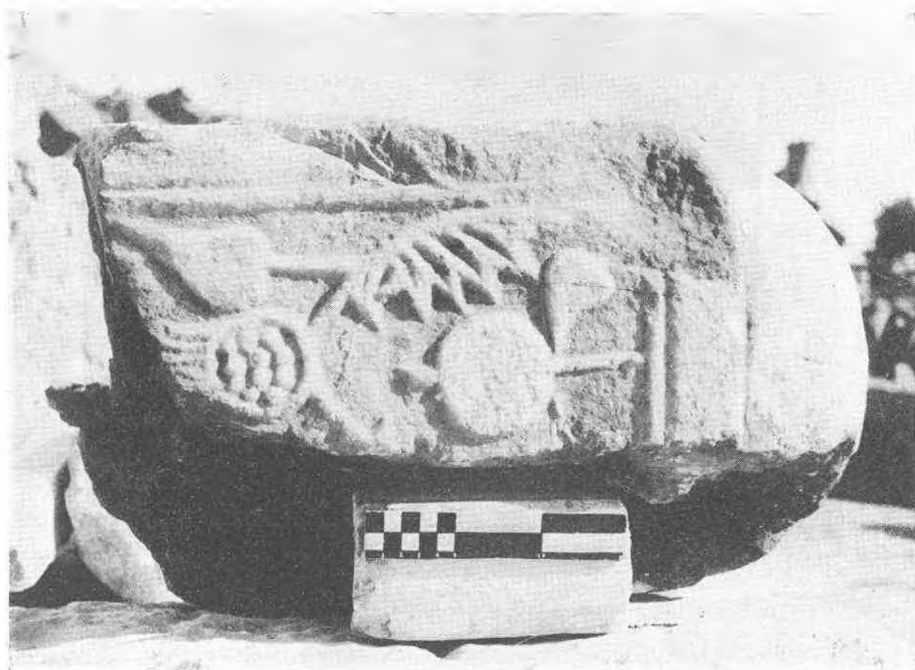


Figure 9 — Fragment of chancel post (upper part).



Figure 10 — Mold for hosts (upper part).