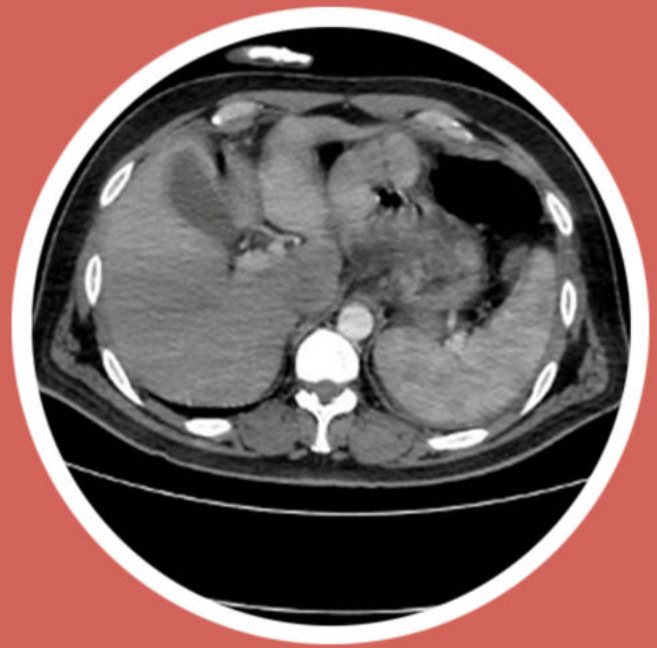
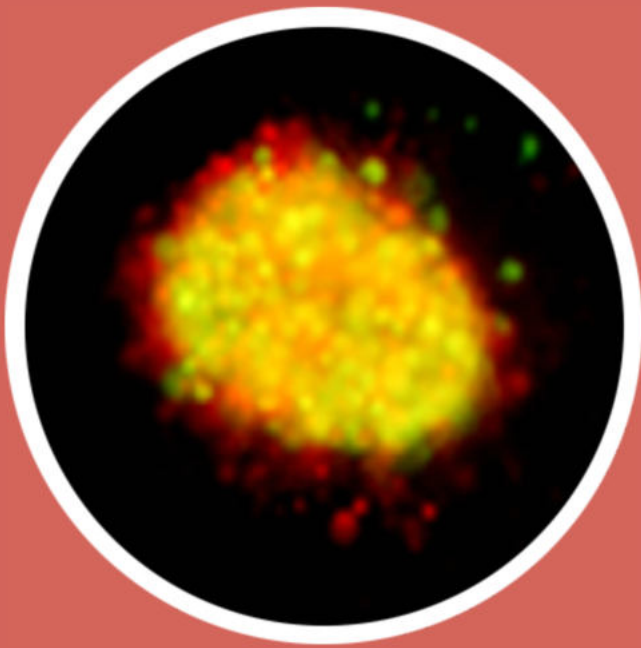


---

---

# The **European** **Research Journal**





# The European Research Journal

## Aim and Scope

The European Research Journal (EuRJ) is an international, independent, double-blind peer reviewed, Open Access and online publishing journal, which aims to publish papers on all the related areas of basic and clinical medicine.

Editorial Board of the European Research Journal complies with the criteria of the International Council of Medical Journal Editors (ICMJE), the World Association of Medical Editors (WAME), and Committee on Publication Ethics (COPE).

The journal publishes a variety of manuscripts including original research, case reports, invited review articles, technical reports, how-to-do it, interesting images and letters to the editor. The European Research Journal has signed the declaration of the Budapest Open Access Initiative. All articles are detected for similarity or plagiarism. Publication language is English. The journal does not charge any article submission or processing charges.

EuRJ recommends that all of our authors obtain their own ORCID identifier which will be included on their article.

The journal is published bimonthly (January, March, May, July, September, and November).

## Abstracting and Indexing

The journal is abstracted and indexed with the following: ULAKBİM TR Index (ULAKBİM TR DİZİN), NLM Catalog (NLM ID: 101685727), Google Scholar (h-index: 9), Index Copernicus (ICV 2021: 100), EMBASE, ProQuest Central, ROAD, SciLit, MIAR (ICDS 2021: 3.8), J-Gate, SHERPA/RoMEO, BASE, EZB, CrossRef, JournalTOCs, WorldCat, TURK MEDLINE, Turkish Citation Index, EuroPub, OpenAIRE, ResearchGate, SOBIAD, Advanced Science Index, ScienceGate, OUCI, Publons, (Clarivate Web of Science)

## Publisher

The European Research Journal (EuRJ)  
Prusa Medical Publishing  
Konak Mh. Kudret Sk. Şenyurt İş Mrk. Blok No:6 İç kapı no: 3  
Nilüfer/BURSA-TURKEY

[www.dergipark.org.tr/eurj/](http://www.dergipark.org.tr/eurj/)



**e-ISSN: 2149-3189**

The European Research Journal, hosted by Turkish JournalPark ACADEMIC, is licensed under a Creative Commons Attribution-NonCommercial-NoDerivatives 4.0 International License.



# **EDITORIAL BOARD**

## **EDITOR-IN-CHIEF**

**Senol YAVUZ, MD,**

Professor,

University of Health Sciences, Bursa Yuksek Ihtisas Training and Research Hospital,  
Department of Cardiovascular Surgery,  
Bursa, Turkey,

## **MANAGING EDITORS**

**Nizameddin KOCA, MD,**

Associate Professor,

University of Health Sciences, Bursa Yuksek Ihtisas Training & Research Hospital,  
Department of Internal Medicine,  
Bursa, Turkey

**Soner CANDER, MD**

Professor,

Uludag University Medical School,  
Department of Endocrinology & Metabolism  
Bursa, Turkey

**Mesut ENGİN, MD,**

Associate Professor,

University of Health Sciences, Bursa Yuksek Ihtisas Training & Research Hospital,  
Department of Cardiovascular Surgery,  
Bursa, Turkey

## **FOUNDING EDITOR**

**Rustem ASKIN, MD,**

Professor of Psychiatry

İstanbul Ticaret University, Department of Psychology  
İstanbul, Turkey

## **EDITORIAL ASSISTANT**

**Ugur BOLUKBAS**

## **EDITORS**

**Omer SENORMANCI, MD**

Associate Professor,

University of Health Sciences, Bursa Yuksek Ihtisas Training & Research Hospital  
Department of Psychiatry,  
Bursa, Turkey

**Mahmut Kalem, MD,**  
Associate Professor,  
Ankara University Medical School,  
Department of Orthopedics and Traumatology,  
Ankara, Turkey

**Meliha KASAPOGLU AKSOY, MD**  
Associate Professor,  
University of Health Sciences, Bursa Yuksek Ihtisas Training and Research Hospital,  
Department of Physical Therapy & Rehabilitation,  
Bursa, Turkey

**Burcu DİNÇGEZ, MD**  
Associate Professor,  
University of Health Sciences, Bursa Yuksek Ihtisas Training and Research Hospital,  
Department of Gynecology and Obstetrics,  
Bursa, Turkey

**Arda ISIK, MD**  
Associate Professor,  
Medeniyet University School of Medicine,  
Department of General Surgery,  
Istanbul, Turkey

**Melih CEKINMEZ, MD**  
Professor,  
University of Health Sciences, Adana City Training and Research Hospital,  
Department of Neurosurgery,  
Adana, Turkey

**Kadir Kaan OZSIN, MD**  
Associate Professor,  
University of Health Sciences, Bursa Yuksek Ihtisas Training and Research Hospital,  
Department of Cardiovascular Surgery,  
Bursa, Turkey

**Nurullah DOGAN, MD,**  
Associate Professor,  
Doruk Medical Center,  
Department of Radiology,  
Bursa, Turkey

**Alper KARAKUS, MD**  
Associate Professor,  
University of Health Sciences, Bursa Yuksek Ihtisas Training and Research Hospital,  
Department of Cardiology,  
Bursa, Turkey

**Onur KAYGUSUZ, MD.,**  
Associate Professor,  
Uludag University School of Medicine,  
Department of Urology,  
Bursa, Turkey

**Koray AYAR, MD**

Associate Professor,  
University of Health Sciences, Bursa Yuksek Ihtisas Training and Research Hospital,  
Department of Rheumatology,  
Bursa, Turkey

**Muzaffer DEMIR, MD**

Professor,  
Trakya University School of Medicine,  
Department of Hematology,  
Edirne, Turkey

**Gokhan OCAKOGLU, Ph.D.,**

Associate Professor,  
Uludag University School of Medicine,  
Department of Biostatistics,  
Bursa, Turkey

## **INTERNATIONAL EDITORIAL BOARD MEMBERS**

**Ahmet KIZILAY, MD**

Professor,  
Inönü University School of Medicine,  
Department of Otorhinolaryngology,  
Malatya, Turkey

**Aron Frederik POPOV, MD**

Professor,  
University of Frankfurt,  
Department of Cardiothoracic Surgery,  
Frankfurt, Germany

**Cristina FLORESCU, MD**

Associate Professor,  
University of Craiova,  
Department of Medicine & Pharmacy,  
Romania

**Elif EKINCI, MD**

MBBS, FRACP, PhD  
University of Melbourne  
Department of Medicine,  
Melbourne, Australia

**Essam M MAHFOUZ, MD**

Professor,  
University of Mansoura School of Medicine  
Department of Cardiology,  
Mansoura, Egypt

**Francesco CARELLI, MD**

Professor,  
University of Milan School of Medicine,  
Department of Family Medicine,  
Milan, Italy

**Gary TSE, MD, PhD**

Assistant Professor,  
The Chinese University of Hong Kong,  
Department of Medicine and Therapeutics,  
Hong Kong, China

**Kendra J. GRUBB, MD, MHA, FACC**

Assistant Professor,  
Emory University School of Medicine,  
Department of Cardiovascular Surgery,  
Atlanta, GA, USA

**Nader D NADER, MD**

Professor,  
University of Buffalo School of Medicine  
Department of Anesthesiology,  
NY, USA

**Sait Ait BENALI, MD**

Professor,  
Cadi Ayyad University School of Medicine,  
Department of Neurosurgery,  
Marrakech, Morocco

**Sedat ALTIN, MD**

Professor,  
University of Health Sciences, Yedikule Training & Research Hospital,  
Department of Chest Diseases,  
Istanbul, Turkey

**Semih HALEZEROGLU, MD, FETCS**

Professor,  
Acibadem University School of Medicine,  
Department of Thoracic Surgery,  
Istanbul, Turkey

**Veysel TAHAN, MD, FACP, FACG, FESBGH**

Assistant Professor,  
University of Missouri,  
Division of Gastroenterology and Hepatology,  
Columbia, Missouri, USA

**Yenal DUNDAR, MD**

Consultant Psychiatrist  
Central Queensland Hospital and Health Service,  
QLD, Australia

# Table of Contents

## Original Articles

- Can non-functional adrenal incidentaloma be ranked among cardiovascular risk factors?** 747-754  
*Burcu YAĞIZ, Aysen AKALIN, Göknur YORULMAZ, Aslı Ceren MACUNLUOĞLU, Onur YAĞIZ*
- The impact of the COVID-19 pandemic on the urology practice in a large tertiary hospital** 755-761  
*Gökçe DÜNDAR, Anıl ERKAN*
- Evaluation of psychiatric symptoms in patients diagnosed with fibromyalgia during COVID-19 pandemic: a cross-sectional study** 762-770  
*Kadir AŞÇIBAŞI, Zeynep Alev ÖZÇETE*
- Prevalence of asymptomatic SARS-CoV-2 infection in children in Sivas province, Central Anatolia** 771-776  
*Merve CANDAN, Salih YILDIRIM*
- C-reactive protein to albumin ratio in Behçet's disease** 777-782  
*Ayşe ÜNAL ENGİNAR*
- Relationships between vaccination, age, and mortality in the COVID-19 intensive care patients** 783-789  
*İsmail DEMİR, Rasim Selçuk YILMAZ, Betül KÖSE, Hüseyin ÖZKARAKAŞ, Şebnem ÇALIK*
- Correlation of morphologic findings and apparent diffusion coefficient values with Ki-67 proliferation index in patients with glioblastoma** 790-799  
*Süleyman ÖNCÜ, İsmail ŞERİFOĞLU, Fatma Zeynep ARSLAN, Mehmet KARAGÜLLE, Samet ŞİMŞEK, Gül Gizem KAYA, Ahmet Tan CİMİLLİ*
- Investigation of cause-specific mortality rates of European Union member and candidate countries by World Health Organization global health estimate categories** 800-809  
*Deniz SİĞİRLİ, Sultan KILIÇARSLAN*
- The in silico interaction analysis of CARMIL1 protein-containing leucine-rich repeat (LRR) regions with interleukin-1 receptor-associated kinase 1 (IRAK1) protein and LLR peptide** 810-820  
*Nail BEŞLİ, Güven YENMİŞ*
- Investigation of the effect of vascular endothelial growth factor gene 936 C/T polymorphism in familial Mediterranean fever patients** 821-827  
*Melek YÜCE, Hasan BAĞCI*
- Assessment of knowledge level and behavior about vaccines of mothers applying to the children's hospital** 828-836  
*Berkhan TOPAKTAŞ, Şule ÖZDEMİR, Sultan HASDEMİR, Hatice Nilden ARSLAN, Ozlem TERZİ, Cihad DÜNDAR*
- Audiological differences in healthy individuals with generalized joint hypermobility: a case-control study** 837-844  
*Memduha TAŞ, Filiz TUNA, Şüle YILMAZ*

<b>Contribution of bronchoscopic lavage to the diagnosis of smear negative pulmonary tuberculosis</b>	<b>845-850</b>
<i>Mustafa Engin, ŞAHİN Sertan BULUT</i>	
<b>Post-COVID-19 vaccine SARS-CoV-2 antibody investigation in healthcare professionals</b>	<b>851-858</b>
<i>Burcu GÜRER GİRAY, Gökçe GÜVEN AÇIK, Sevda Meryem BAŞ, Yunus Emre BULUT, Mustafa Sırrı KOTANOĞLU</i>	
<b>Regulatory effects of laminin derived peptide on microtissue formation for tissue engineered scaffold-free constructs</b>	<b>859-868</b>
<i>Zişan Buse YARALI ÇEVİK, Ayşe ÖRDEK, Ozan KARAMAN</i>	
<b>The effectiveness of platelet rich plasma therapy in chronic sinusitis patients with odor disorder undergoing endoscopic sinus surgery</b>	<b>869-881</b>
<i>Sinem GÖKÇE KÜTÜK, Muhammet Fatih TOPUZ, Ali GÜVEY, Çağrı AÇIKGÖZ</i>	
<b>Comparison of apparent diffusion coefficient and relative apparent diffusion coefficient values for differential diagnosis of breast lesions</b>	<b>882-891</b>
<i>Ayşe Eda PARLAK, Buket YAĞCI</i>	
<b>Perinatal deaths in Bursa Province, Turkey: an analysis by applying the International Classification of Diseases-perinatal mortality (ICD-PM) system</b>	<b>892-897</b>
<i>Salih METİN</i>	
<b>Case Report</b>	
<b>A case of anorexia nervosa whose body image deteriorated after being weighed with classmates at school</b>	<b>898-901</b>
<i>Nazan KAYMAZ, Mehmet Erdem UZUN</i>	
<b>A rare long-term complication in a patient with gastric bypass: remnant gastric perforation</b>	<b>902-905</b>
<i>Oğuzhan Fatih AY, Umut Eren ERDOĞDU, Hakan TEZER, Süleyman ŞEN</i>	
<b>Generalized tetanus in an eight-year-old girl: a case report</b>	<b>906-908</b>
<i>Sevgi YİMENİCİOĞLU, Sevil TURHAN, Celal SAGLAM, Yaşar BİLDİRİCİ, Bekir AKDEMİR</i>	