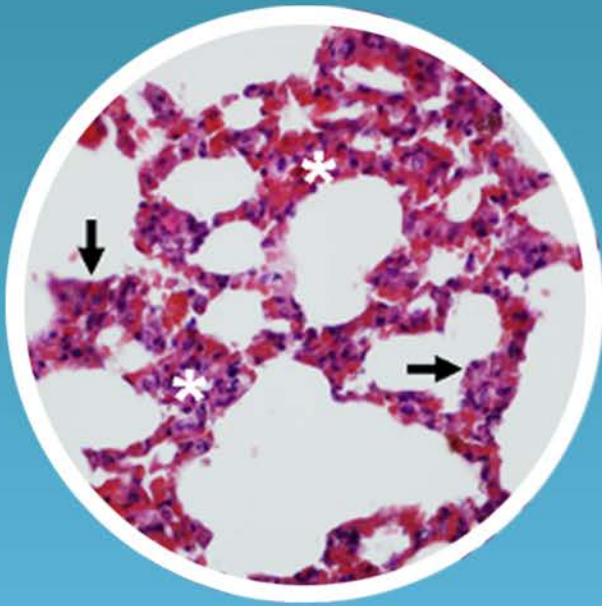




Volume 9 · Issue 5 · September 2023
e-ISSN: 2149-3189

The **European** Research Journal



Copyright © 2023 by Prusa Medical Publishing
Available at <http://dergipark.org.tr/eurj>



The European Research Journal

Aim and Scope

The European Research Journal (EuRJ) is an international, independent, double-blind peer reviewed, Open Access and online publishing journal, which aims to publish papers on all the related areas of basic and clinical medicine.

Editorial Board of the European Research Journal complies with the criteria of the International Council of Medical Journal Editors (ICMJE), the World Association of Medical Editors (WAME), and Committee on Publication Ethics (COPE).

The journal publishes a variety of manuscripts including original research, case reports, invited review articles, technical reports, how-to-do it, interesting images and letters to the editor. The European Research Journal has signed the declaration of the Budapest Open Access Initiative. All articles are detected for similarity or plagiarism. Publication language is English. The journal does not charge any article submission or processing charges.

EuRJ recommends that all of our authors obtain their own ORCID identifier which will be included on their article.

The journal is published bimonthly (January, March, May, July, September, and November).

Abstracting and Indexing

The journal is abstracted and indexed with the following: ULAKBİM TR Index (ULAKBİM TR DİZİN), NLM Catalog (NLM ID: 101685727), Google Scholar (h-index: 11), Index Copernicus (ICV 2021: 100), EMBASE, ProQuest Central, EBSCO Academic Search Ultimate, ROAD, SciLit, MIAR (ICDS 2021: 3.8), J-Gate, SHERPA/RoMEO, BASE, EZB, CrossRef, JournalTOCs, WorldCat, TURK MEDLINE, Turkish Citation Index, EuroPub, OpenAIRE, ResearchGate, SOBIAD, Advanced Science Index, ScienceGate, OUCI, Publons, (Clarivate Web of Science)

Publisher

The European Research Journal (EuRJ)
Prusa Medical Publishing
Konak Mh. Kudret Sk. Şenyurt İş Mrk. Blok No:6 İç kapı no: 3
Nilüfer/Bursa-Turkey
info@prusamp.com

www.dergipark.org.tr/eurj/
<http://www.prusamp.com>



e-ISSN: 2149-3189

The European Research Journal, hosted by Turkish JournalPark ACADEMIC, is licensed under a Creative Commons Attribution-NonCommercial-NoDerivatives 4.0 International License.



EDITORIAL BOARD

EDITOR-IN-CHIEF

Senol YAVUZ, MD,

Professor,

University of Health Sciences, Bursa Yuksek Ihtisas Training & Research Hospital,
Department of Cardiovascular Surgery,
Bursa, Turkey,

MANAGING EDITORS

Nizameddin KOCA, MD,

Associate Professor,

University of Health Sciences, Bursa Şehir Training & Research Hospital,
Department of Internal Medicine,
Bursa, Turkey

Soner CANDER, MD

Professor,

Uludag University Medical School,
Department of Endocrinology and Metabolism
Bursa, Turkey

Mesut ENGİN, MD,

Associate Professor,

University of Health Sciences, Bursa Yuksek Ihtisas Training & Research Hospital,
Department of Cardiovascular Surgery,
Bursa, Turkey

FOUNDING EDITOR

Rustem ASKIN, MD,

Professor of Psychiatry

İstanbul Ticaret University, Department of Psychology
İstanbul, Turkey

EDITORIAL ASSISTANT

Ugur BOLUKBAS

EDITORS

Omer SENORMANCI, MD

Professor,

Beykent University, Faculty of Arts-Sciences
Department of Psychology,
İstanbul, Turkey

Mahmut KALEM, MD,
Associate Professor,
Ankara University Medical School,
Department of Orthopedics and Traumatology,
Ankara, Turkey

Meliha KASAPOGLU AKSOY, MD
Associate Professor,
University of Health Sciences, Bursa Yuksek Ihtisas Training & Research Hospital,
Department of Physical Therapy and Rehabilitation,
Bursa, Turkey

Burcu DİNÇGEZ, MD
Associate Professor,
University of Health Sciences, Bursa Yuksek Ihtisas Training & Research Hospital,
Department of Gynecology and Obstetrics,
Bursa, Turkey

Arda ISIK, MD
Associate Professor,
Medeniyet University School of Medicine,
Department of General Surgery,
Istanbul, Turkey

Melih CEKINMEZ, MD
Professor,
University of Health Sciences, Adana City Training & Research Hospital,
Department of Neurosurgery,
Adana, Turkey

Kadir Kaan OZSIN, MD
Associate Professor,
University of Health Sciences, Bursa Yuksek Ihtisas Training & Research Hospital,
Department of Cardiovascular Surgery,
Bursa, Turkey

Alper KARAKUS, MD
Associate Professor,
University of Health Sciences, Bursa Yuksek Ihtisas Training & Research Hospital,
Department of Cardiology,
Bursa, Turkey

Onur KAYGUSUZ, MD.,
Associate Professor,
Uludag University School of Medicine,
Department of Urology,
Bursa, Turkey

Sayad KOCAHAN, PhD,
Professor,
University of Health Sciences, Gülhane Medical Faculty,
Department of Physiology,
Ankara, Turkey

Gokhan OCAKOGLU, Ph.D.,
Associate Professor,
Uludag University School of Medicine,
Department of Biostatistics,
Bursa, Turkey

Nurullah DOGAN, MD,
Associate Professor,
Doruk Nilüfer Hospital,
Department of Radiology,
Bursa, Turkey

INTERNATIONAL EDITORIAL BOARD MEMBERS

Ahmet KIZILAY, MD
Professor,
Inönü University School of Medicine,
Department of Otorhinolaryngology,
Malatya, Turkey

Aron Frederik POPOV, MD
Professor,
University of Frankfurt,
Department of Cardiothoracic Surgery,
Frankfurt, Germany

Cristina FLORESCU, MD
Associate Professor,
University of Craiova,
Department of Medicine and Pharmacy,
Romania

Elif EKINCI, MD
MBBS, FRACP, PhD
University of Melbourne
Department of Medicine,
Melbourne, Australia

Essam M MAHFOUZ, MD
Professor,
University of Mansoura School of Medicine
Department of Cardiology,
Mansoura, Egypt

Francesco CARELLI, MD
Professor,
University of Milan School of Medicine,
Department of Family Medicine,
Milan, Italy

Gary TSE, MD, PhD

Assistant Professor,
The Chinese University of Hong Kong,
Department of Medicine and Therapeutics,
Hong Kong, China

Kendra J. GRUBB, MD, MHA, FACC

Assistant Professor,
Emory University School of Medicine,
Department of Cardiovascular Surgery,
Atlanta, GA, USA

Muzaffer DEMIR, MD

Professor,
Trakya University School of Medicine,
Department of Hematology,
Edirne, Turkey

Nader D NADER, MD

Professor,
University of Buffalo School of Medicine
Department of Anesthesiology,
NY, USA

Sait Ait BENALI, MD

Professor,
Cadi Ayyad University School of Medicine,
Department of Neurosurgery,
Marrakech, Morocco

Sedat ALTIN, MD

Professor,
University of Health Sciences, Yedikule Training & Research Hospital,
Department of Chest Diseases,
Istanbul, Turkey

Semih HALEZEROGLU, MD, FETCS

Professor,
Acibadem University School of Medicine,
Department of Thoracic Surgery,
Istanbul, Turkey

Veysel TAHAN, MD, FACP, FACG, FESBGH

Assistant Professor,
University of Missouri,
Division of Gastroenterology and Hepatology,
Columbia, Missouri, USA

Yenal DUNDAR, MD

Consultant Psychiatrist
Central Queensland Hospital and Health Service,
QLD, Australia

Table of Contents

Original Articles

- Evaluation of the success of shock index and its derivatives in determining mortality in STEMI cases applied to emergency department** 831-839
Guner YURTSEVER, Adem ÇAKIR, Ejder Saylav BORA
- Epicardial adipose and pre-sternal subcutaneous tissues associated with extent of pneumonia and hospitalization in COVID-19** 840-847
Feyza SÖNMEZ TOPCU, Şirin YURTLU TEMEL
- Does chronic venous insufficiency affect cardiac functions? A speckle tracking echocardiography study** 848-854
Fatih KOCA, Fatih LEVENT, Ahmet Kağan AS, Fatih KÖKSAL, Ahmet Burak TATLI, Fahriye VATANSEVER, Mehmet DEMİR, Erhan TENEKECİOĞLU
- The effect of perceived parental attitude score on symptoms of bipolar disorder and schizophrenia** 855-867
Ece YAZLA, Unsal AYDİNOĞLU, Elvan OZALP
- Factors predicting transrectal ultrasound-guided systematic prostate biopsy failure** 868-873
Serhat ÇETİN, Ahmet OLGUN, Ender Cem BULUT, Murat KOPARAL, Elbay BAYRAMLI, İlker ŞEN, Sinan SÖZEN
- Hidden face of chronic obstructive pulmonary disease: effects of patients' psychiatric symptoms on caregivers' burden and quality of life** 874-883
Zeynep KARAGÜN, Deniz ÇELİK, Mehmet Sinan AYDIN, İbrahim GÜNDOĞMUŞ, Yusuf Tuğrul ŞİPİT
- Characterization of clinical features of monosensitized and polysensitized allergic rhinitis patients with pollen allergy** 884-893
Şadan SOYYIĞIT, Dilek ÖKSÜZER ÇİMŞİR
- Investigation of the relationship between modified Glasgow prognostic score and no-reflow phenomenon in patients undergoing primary percutaneous coronary intervention for ST-elevation myocardial infarction** 894-902
Mustafa KAPLANGORAY, Kenan TOPRAK, Cihan AYDIN, Ramazan ASLAN
- Evaluation of intraductal papillary mucinous neoplasms detected incidentally with magnetic resonance cholangiopancreatography** 903-909
Mustafa Orhan NALBANT
- The effect of orally administered metoprolol on the frequency and severity of rocuronium injection pain** 910-917
Özlem ŞEN, Dilek KALAYCI, Tülay KABAOSMAN, Menşure KAYA, Seda YILMAZ
- Determining the traditional methods used by newborn women by giving birth: a descriptive study** 918-925
Aysel BÜLEZ, Mehtap SÖNMEZ, Merva ORHAN, Aygül GÜNEŞ

The relationship of laboratory values with prognosis in acute stroke recanalization treatment applied patients	926-931
<i>İbrahim ACIR, Hacı Ali ERDOĞAN, Hülya OLGUN YAZAR, Melis SUSKUN, Vildan YAYLA</i>	
Long-term outcomes of COVID-19 infection in patients with solid tumors	932-939
<i>Oktay ÜNSAL, Ozan YAZICI, Ömer Faruk ÖZKAN, Gözde SAVAŞ, Nuriye YILDIRIM ÖZDEMİR, Aytuğ ÜNER, Nazan GÜNEL, Ahmet ÖZET</i>	
Musculoskeletal pain and quality of life in patients undergoing hemodialysis: a single-center study	940-947
<i>Ezgi ERSOY YEŞİL, Özlem PEHLİVAN, Zeki TOPRAK, Hasan KAYABAŞI, Dede ŞİT</i>	
Turkish speech-language therapists' perceptions and experiences of augmentative and alternative communication	948-962
<i>İbrahim Can YAŞA, Selin TOKALAK</i>	
The association between umbilical cord coiling index and adverse perinatal outcomes at term pregnancies	963-969
<i>Burcu AYDIN BOYAMA, Emine Zeynep YILMAZ</i>	
The effect of hypertension on renal functions in patients with acute coronary syndrome	970-976
<i>Umut UYAN</i>	
The possible effect of light exposure reduction via eye patches after the examination for retinopathy in premature infants? An observational study in preterm neonates	977-983
<i>Gaffari TUNÇ, Duygu YALINBAŞ YETER, Feyzanur KARAGÖZ, Emine Erva TECER, Senem AKKAN, Fatih KILIÇBAY</i>	
Posttraumatic growth in family members of individuals with methamphetamine use disorder	984-991
<i>Çetin TURAN, Süheyla ÜNAL, Güliz ŞENORMANCI, Ömer ŞENORMANCI</i>	
Quality and reliability of YouTube videos as a source of information on pulmonary rehabilitation	992-999
<i>Aytül COŞAR ERTEM, Uğur ERTEM</i>	
Evaluation of radiologic predisposing factors for greater trochanteric pain syndrome	1000-1004
<i>Erdem ŞAHİN, Altuğ TANRIÖVER</i>	
Surgical, histopathological, and clinical outcomes of parotid gland neoplasms: a 10-year tertiary single-center experience	1005-1014
<i>Aynur ALİYEVA, Ozlem YAGIZ AGAYAROV, Gökçe AKSOY YILDIRIM, Togay MUDERRİS, Abdullah DALGIC</i>	
Comparison of human epidermal growth factor receptor 2 and cancer stem cell markers like CD44 and CD133 expressions with clinicopathological parameters in gastric cancer	1015-1026
<i>Melin GECER, Nur BÜYÜKPINARBAŞILI, Seval TURNA, Mehmet BEŞİROĞLU, Zuhul GUCIN</i>	
Immediate reconstruction of nasal alar defects after malignant skin tumor excision without mohs surgery	1027-1033
<i>Mehmet TAPAN, Özlenen ÖZKAN</i>	
Comparison of frozen section accuracy with final pathology results in early clinical stage of endometrioid type endometrial cancer	1034-1039
<i>Levent ÖZGEN, Gülten ÖZGEN</i>	

- Evaluation of arterial stiffness between peritoneal dialysis and hemodialysis in patients with renal replacement therapy** 1040-1047
Tufan GÜNAY, Dursun TOPAL, Suat AKGÜR
- Exploring the role of inflammatory parameters in predicting isthmocele formation following planned cesarean section: a study in patients with a history of one previous cesarean** 1048-1055
Anıl ERTURK, Gulay GOKCE, Nergis KENDER ERTURK
- The effect of glycemic control on sleep quality in type 2 diabetes mellitus** 1056-1061
Zeynep KOÇ, Banu BÖYÜK, Seydahmet AKIN, Özcan KESKİN, Nazire ALADAĞ
- Is semantic feature analysis effective when applied intensively? A randomized pilot study with non-fluent aphasic individuals** 1062-1073
İbrahim Can YAŞA
- Anemia and COVID-19** 1074-1082
Vildan GÜRSOY, Suna AVCI, Selime ERMURAT, Ali EROL, Melike YAZICI
- Evaluation of ultrasound-measured gastric volume and content in type 2 diabetes mellitus patients undergoing elective surgery: a prospective observational study** 1083-1092
Asiye DEMİREL, Mürüvvet DAYIOĞLU, Ayşe Neslihan BALKAYA, Anıl ONUR, Füsun GÖZEN
- Evaluation of infections in patients with kidney and liver transplantation** 1093-1098
Sibel DOĞAN KAYA, Güliz EVİK, Münire DENİZ, Yeşim UYGUN KIZMAZ
- Prognostic value of the leuko-glycemic index in coronary chronic total occlusion patients** 1099-1104
Tezcan PEKER, Mehmet ÖZBEK, Bedrettin BOYRAZ, Selen Filiz ASLAN, Muhammed DEMİR Burhan ASLAN
- Acute poisonings requiring intensive care in childhood and a hidden threat, suicide attempts: a single-center experience** 1105-1113
Arzu OTO, Serbülent KILIÇ, Musa SAHİN
- Comparison of nutritional adequacy in adult patients with acute respiratory distress syndrome with and without veno-venous extracorporeal membrane oxygenation: a single-center experience** 1114-1123
Gülbahar ÇALIŞKAN, Nermin KELEBEK GİRGIN
- Clinical evaluation of treatment with hook plate in patients with acromioclavicular joint dislocation** 1124-1128
İsmail BÜYÜKCERAN, Hikmet ÇİNKA, Alparslan YURTBAY, Hüseyin Sina COŞKUN, Abdurrahman Murat YILDIRIM, Davut KESKİN
- A new adjunct in the differentiation of encephalitis and meningitis after negative cerebrospinal fluid culture: systemic inflammatory immune index** 1129-1134
Cüneyt ARIKAN, Osman Sezer ÇINAROĞLU, Mehmet Göktuğ EFGAN, Efe KANTER, Ejder Saylav BORA
- Evaluation of the gender effect in operated prolactinomas** 1135-1141
Dilan ÖZAYDIN, Ahmet Numan DEMİR, Necmettin TANRIÖVER

- Comparison of L452R mutation variant diagnosis in SARS-COV-2 PCR positive samples with two different qPCR kits** 1142-1148
Burcu GÜRER GİRAY, Gökçe GÜVEN AÇIK
- Effect of celecoxib on intra-abdominal sepsis-induced lung injury in rats** 1149-1156
Cengiz DIBEKOGLU, Ejder Saylav BORA, Ebru EROĞLU, Guner YURTSEVER, Yiğit UYANIKGİL, Oytun ERBAŞ
- Potential prognostic parameters and real-world data in patients with primary central nervous system lymphoma: a new brick on the old ones** 1157-1165
Tuba ERSAL, Vildan OZKOCAMAN, İbrahim Ethem PINAR, Cumali YALÇIN, Bedrettin ORHAN, Ömer CANDAR, Sinem ÇUBUKÇU, Tuba GÜLLÜ KOCA, Rıdvan ALİ, Fahir ÖZKALEMKAŞ
- Exploring the impacts of a nuchal cord on perinatal outcomes in vaginal delivery** 1166-1170
Cevat Rifat CÜNDÜBEY, Mehmet AK, Mustafa Bertan DEMİR, Şeyma DAĞLITUNCEZDİ ÇAM
- Relationship between uric acid/ albumin ratio and coronary slow flow** 1171-1177
Aykut DEMİRKIRAN, Cihan AYDIN
- Frequency of drug-associated hyperprolactinaemia: a single-center retrospective study** 1178-1184
Elif GÜNEŞ, Mutlu GÜNEŞ
- The effect of adenoidectomy on pulmonary function in children: prospective controlled study** 1185-1193
Ozlem YAGIZ AGAYAROV, Aynur ALİYEVA Sayad KOCAHAN
- Prognostic factors in atypical carcinoid tumors** 1194-1200
Ahmet Bilgehan ŞAHİN, Erdem ÇUBUKÇU, Adem DELİGÖNÜL, Birol OCAK, Huseyin MELEK, Buket ERKAN OZMARASALI, Burcu CANER, Ahmet BAYRAM, Elif Ülker AKYILDIZ, Türkkan EVRENSEL
- The role of intraoperative superior hypogastric plexus blocks in pain management for total abdominal hysterectomy: a comparative study** 1201-1206
Elif GUNDOGDU, Tuğba GÜL YILMAZ
- Predictive role of ABCD2, ABCD3I, C-reactive protein, neutrophil-lymphocyte ratio, platelet-lymphocyte ratio and systemic immune-inflammation index in 90-day and long-term stroke after transient ischemic attack** 1207-1214
İdris KOCATÜRK, Sedat GÜLTEN
- Effects of embryo characteristics in frozen-thawed single euploid blastocyst transfers on pregnancy outcomes: a retrospective cohort study** 1215-1223
Gönül ÖZER, Gülçin ÖZKARA
- The severity of hyponatremia worsens the outcome in pediatric intensive care patients** 1224-1231
Arzu OTO, Seher ERDOĞAN, Mehmet BOŞNAK
- The effect of achieving guideline-based target low-density lipoprotein cholesterol levels on mortality in transcatheter aortic valve implantation patients with coronary artery disease** 1232-1239
Ömer Furkan DEMİR, Fatih LEVENT

Histopathological diagnoses revealed by indication-based renal allograft biopsies: a retrospective analysis 1240-1244

Eryigit EREN, Mehmet TOKAC, Alaaddin AYDIN, Taylan ŞAHİN, Hikmet Bora USLU, Selman ALKAN, Ayhan DİNÇKAN

Evaluation of malignant breast masses with abbreviated breast magnetic resonance imaging 1245-1250

Ebru YILMAZ, Nilgün GÜLDOĞAN

Cardiac biomarkers comparison between acute myocarditis/ myopericarditis and multisystem inflammatory syndrome in children 1251-1257

Derya DUMAN, Derya KARPUZ

Meta-Analysis

The effect of aromatherapy on labor pain, duration of labor, anxiety and Apgar score outcome: a systematic review and meta-analysis 1258-1270

Aysu YILDIZ KARAAHMET, Fatma Şule BİLGİÇ

Reviews

Pharmacobiology of topical Ankaferd hemostat in neoplastic disorders 1271-1276

Ümit Yavuz MALKAN, İbrahim Celalettin HAZNEDAROĞLU