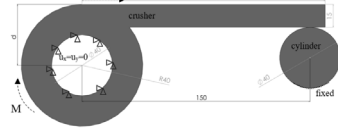


*Effect of Crusher Arm Position and Surface Friction on the Mechanical Behaviour of a Crusher under Static Conditions* 1-6

Mustafa Murat Yavuz

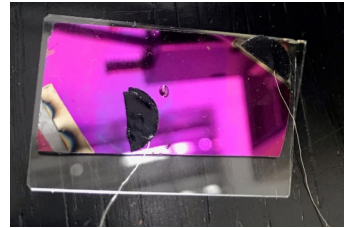
This study examined the connection of the crusher arm at various positions on the shaft and explored variations in stress.



*A Fabrication Method for Memristors with Graphene Top Electrodes and their Characterization* 7-14

Selin Onay, Omer Refet Caylan, Goknur Buke and Itir Koymen

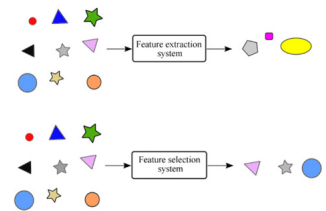
This study reports a novel fabrication method of utilizing graphene as a top electrode in memristive devices.



*COVID-19 Diagnosis from Blood Gas Using Multivariate Linear Regression* 15-23

Faruk Ayata and Ebubekir Seyyarer

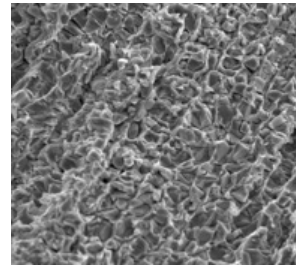
In this study, it is aimed to obtain a function that finds the positive or negative COVID-19 test from the blood gas values of individuals by using Machine Learning methods to contribute to the outbreak management.



*Microstructural Evolution and Mechanical Properties of Y Added CoCrFeNi High-entropy Alloys Produced by Arc-melting* 25-31

Gökhan Polat and Hasan Kotan

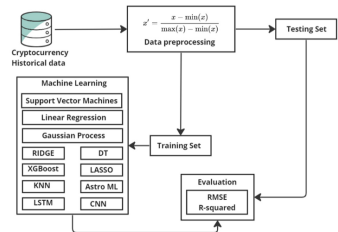
The systematic addition of yttrium (Y) into CoCrFeNi HEA was investigated in the present study to increase the strength by solid solution and second phase strengthening.



*A Research: Investigation of Financial Applications with Blockchain Technology* 33-40

Mohammed Ali Mohammed and Fuat Turk

This article delves into applying machine learning techniques for predicting cryptocurrency prices, mainly focusing on Bitcoin, Ethereum, and Binance Coin.



*Size Dependent Compressive Strength of FIB Machined Single Crystal Manganese Pillars* 41-47

Halil Yılmaz, Bülent Alkan and Hasan Feyzi Budak

The deformation behavior of single crystals of manganese pillars generated by focused ion beam (FIB), with diameters ranging from ~1 nm to ~4.5 μm, has been studied as a function of specimen size using micropillar compression at ambient temperature.

