

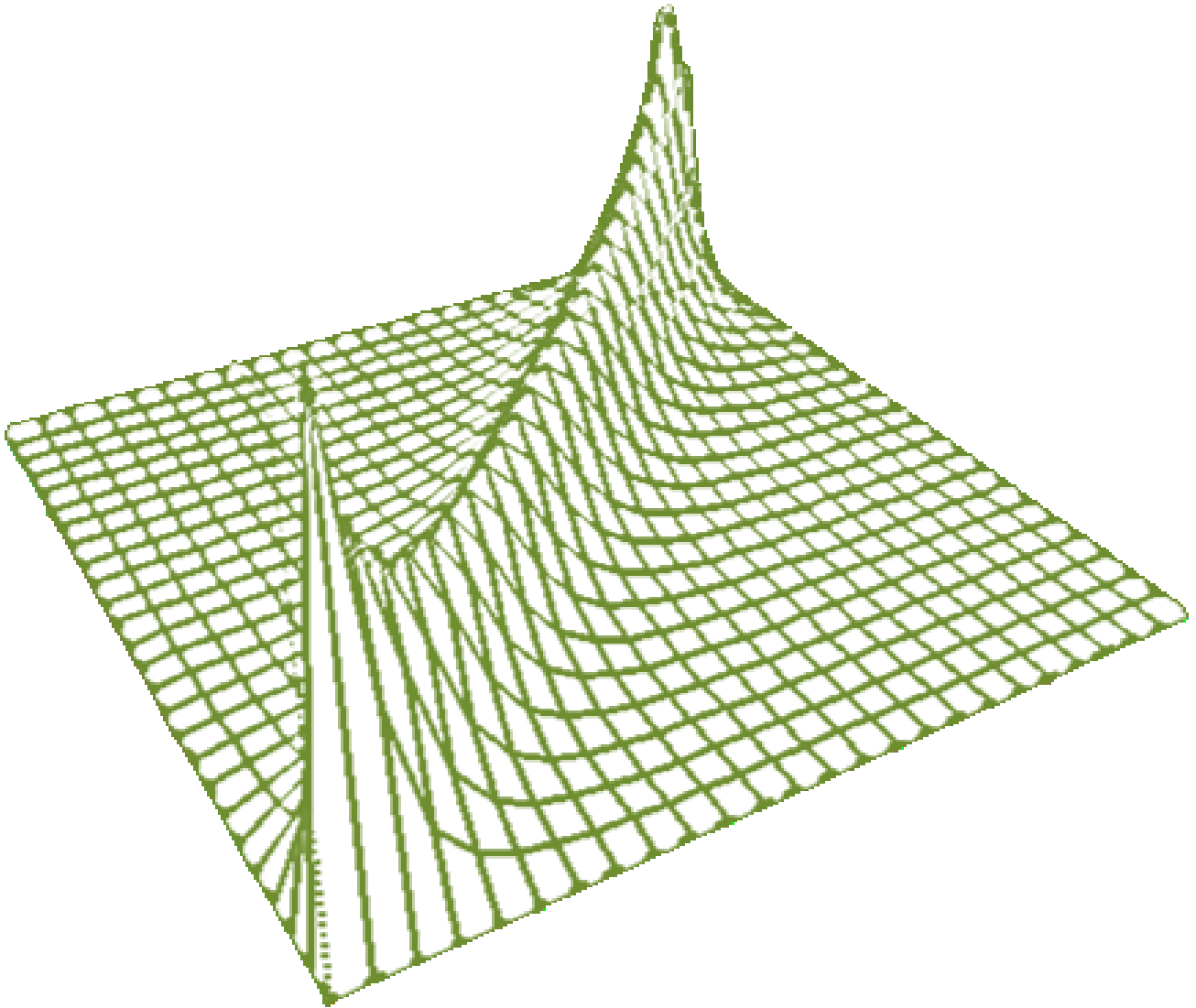


NATURAL SCIENCE & DISCOVERY



ISSN: 2149-6307

Lycia Press LONDON UK



Copula function analysis of structure dependence relation between Exchange rate of dollars and Deposit rate of Turkey

International Journal of
Natural Science and Discovery
Open Access Scientific Journal
2017, Vol.3, No.1

www.natscidiscovery.com

Natural Science and Discovery (www.natscidiscovery.com) is an international open access, peer-reviewed scientific research journal that provides rapid publication of articles in all disciplines of Natural science such as Physics, Mathematics, Chemistry, Biology, Engineering, Nanotechnology

The policy of top priority of NSD is to put forward and highlight medical innovations and inspiring patents

NSD offers an exceptionally fast publication schedule including prompt peer-review by the experts in the field and immediate publication upon acceptance.

The editorial board aims at reviewing the submitted articles as fast as possible and promptly including them in the forthcoming issues.

This journal is published under ethical publishing policy of international scientific ethical and publication rules. NSD supports the Open Access Initiative. Abstracts and full texts (HTML and PDF format) of all articles published by NSD are freely accessible to Researchers, Scientist, the Public and other users to view, download and share, immediately upon publication

Honorary Editors

Prof. Dr. Gustavo Barbosa-CÁNOVAS, Washington State University, USA

Prof. Dr. Peyami BATTAL, Yuzuncu Yil University, TR

Natural Science and Discovery is an international open access, peer-reviewed scientific research journal. All concession and copyrights belonging to Lycia Press as Founder

ISSN: 2148-6832 (Print) E-ISSN: 2149-6307 (Online)

Category: Multi Disciplinary Life Science Journal

Abbreviated key title: Nat. Sci. Discov.

Frequency: Sessional (March, June, September, December)

Review System: Blind Peer Review

Circulation: Globally, Online, Printed

Article Processing Charge (APC): US\$ 100

Licensing: CC-BY-NC 4.0 International License Environmental

Editor-in-Chief: Christopher E. Schmitt (Ph.D.) Cardiovascular Research Institute | San Francisco, CA, USA

Deputy Editor: Halit Demir (Prof.) YYU, Faculty of Science Dept. of Biochemistry, Manisa, TR

Deputy Editor: Zafer Akan (Assoc. Prof.) 3rd Floor 86 - 90 Paul Street, EC2A 4NE, London, UK

Established: 30.04.2015

Web address: www.medscidiscovery.com; <http://dergipark.ulakbim.gov.tr/msd>

E-mail : editor [at] medscidiscovery.com

Design and preparation of PDFs, Language editing, Web site design, Graphical design Services of international Journal of Medical Science and Discovery has been contracted with Lycia Press LONDON, UK (as Publisher), by the MSD Board of Directors

Publisher: Lycia Press Inc.

Address: 3rd Floor 86 - 90 Paul Street, EC2A 4NE, London, UK

Web address: www.lycians.com

Phone : +44 0 203 322 3097

E-mail : office [at] lycians.com

E-mail : info [at] lycians.com

Editorial Board

Prof. Dr.	Arash KHAKI	Islamic Azad University, Iran
Ph.D.	Muhammet Burak BATIR	Celal Bayar University,TR
Asist. Prof. Dr.	Ozdemirhan SERCIN	University Libre de Bruxelles, Belgium
Prof. Dr.	Nevin ÇANKAYA	USAK University TR
Asist. Prof. Dr.	Serife KAYMAKSIZ	Helmholtz-Institute Muenster, Germany
Ph.D.	Hasan DEMIROGLU	Celal Bayar University, TR
Prof. Dr.	Ugur AVCIBASI	Celal Bayar University, TR
Asc. Prof. Dr.	Mehmet ONDER	Celal Bayar University, TR
Prof. Dr.	Hasan Huseyin UGURLU	Gazi University, Faculty of Education, Ankara, Turkey
Asist. Prof. Dr.	Evren ZIPLAR	Cankiri Karatekin University, TR
Assist. Prof. Dr.	Bahriye SIRAV	Gazi University, TR
Prof. Dr.	Iskender REYHANCAN	Istanbul Thecnical University, TR
Prof. Dr.	Mehmet Ali KORPINAR	Istanbul University, TR
Asist. Prof. Dr.	Mehmet TURKMEN	Hacettepe, Dept. of Nuclear Eng., Ankara, Turkey
Asist. Prof. Dr.	Tahir ÇAKIR	Yuzuncu Yıl Universtiy, Van
Prof. Dr.	Tunaya KALKAN	Istanbul University, TR
Prof. Dr.	Erdal ÇOKÇA	Middle East Technical University TR
Asc. Prof. Dr.	Yeliz YUKSELEN AKSOY	Dokuz Eylul University TR
Prof. Dr.	Jeffrey C. EVANS	Bucknell University, Pennsylvania, USA
Prof. Dr.	Adnan YAZICI	Middle East Technical Univ. (METU) TR
Asist. Prof. Dr.	Huseyin BALCI	Adnan Menderes Univ. Aydin, TR
Prof. Dr.	Faruk BOZOGLU	Middle East Technical University, (METU) TR
Asist. Prof. Dr.	Balati KUERBANJIANG	University of York, York, UK
Prof. Dr	Ian WATSON	Systems Power and Energy, Glasgow, UK

Lycia Press Inc. Office

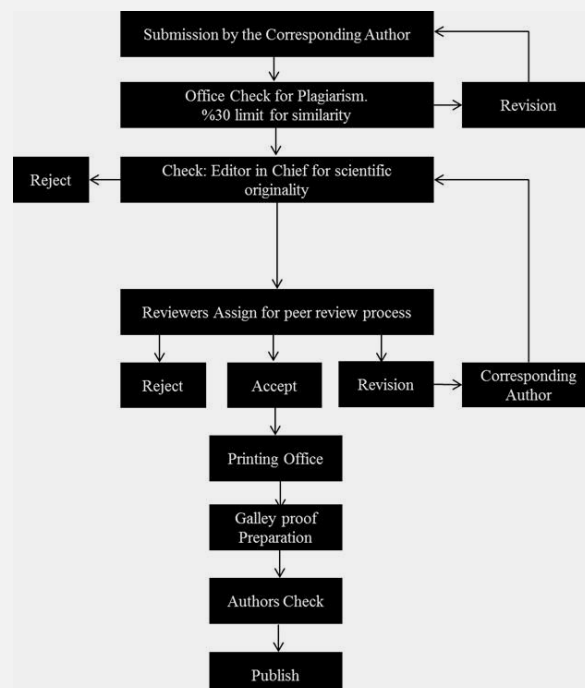
Prof. Dr.	Sıddık KESKİN	YYU Faculty of Medicine, Dept. of Medical Statistics. Statistical Editor
Asist. Prof. Dr.	Hakan ERGİN	Istanbul University, Dept. of Foreign Languages. Language Editor
Assist.	Elena JALBA	Reading University, London UK. Language Editor
Assist	Gonul OZGOK	Lycia Pess Inc. London
Typist	Office Lycia Press	office@lycians.com
Web	Web Lycia Press	info@lycians.com

Instruction for Authors

- **Important**
- **NSD journal team, is committed to deterring plagiarism, including self-plagiarism. Your manuscripts will be screened for similarity detection with iThenticate, Similarity rate is expected under the %30 except for material and method section.**
- **For research studies using human or animal subjects, the trial's design, conduct and reporting of results must conform to Good Clinical Practice guidelines (such as the Good Clinical Practice in Food and Drug Administration (FDA)-Regulated Clinical Trials (USA) or the Medical Research Council Guidelines for Good Clinical Practice in Clinical Trials (UK)) and/or to the World Medical Association (WMA) Declaration of Helsinki**
- **Dear Authors, please load just these three file to manuscript submission system**
- Title Page Sample
- Manuscript Sample
- Copyright Transfer and Author Consent Form
- NSD uses vancouver reference style, please prepare articles due to Vancouver reference style rules.
- **Manuscript Preparation Rules**
- 1.Cover letter
- a- A statement that the manuscript has been read and approved by all the authors.
- b- Approval of all the authors regarding the order in which their names have appeared.
- c- That each author confirms the manuscript represents honest work.
- d- The name, address, and telephone number of the corresponding author who is responsible for communicating with other authors about revisions and final approval.
- e- The letter should give any additional information that may be helpful to the editor, such as the type or format of the article. If the manuscript has been submitted previously to another journal or in another language, it is helpful to include the previous editor's and reviewers' comments with the submitted manuscript, along with the authors' responses to those comments. Submitting previous evaluatory review of another journal accelerates the review process.
- f- For accepted manuscripts, the authors are requested to fill and sign the journal's cover letter to express their consent for its publication.
- g- To reproduce published material, to use illustrations or tables or report information about identifiable people, the author should submit a copy of the permission with the manuscript to the journal.
- **2.Top Ethic Committee Approval**
- Inclusion of the approval letter from the relevant Ethics Committee or Institution's Review Board regarding the research protocol and the rights of the subjects (if applicable to the study)
- **3.Top Consent Form**
- Attach a copy of the consent form to the letter, if applicable. Consent forms would be evaluated by the Ethics Committee and then signed by the participant.
- 4.Top RCT or NCT Registration
- Emailing the letter denoting registration of RCTs or NCTs in domestic or international databases (The trial's registration number needs to be mentioned, too).
- 5. Manuscripts submitted in English, must be type written, double-spaced, on good quality A4 paper, or paper of similar format. Authors are requested to reserve margins of at least 2.5cm all around the paper. Original drawings of photos, tables and figures should be furnished together with the manuscripts.
- 6. Manuscripts should be kept to a minimum length and should be subdivided into labeled sections (Title page, Abstract, Keywords, Introduction, Materials and Methods, Results, Discussion, Conclusion, Acknowledgement, and References).
- 7. A title page is to be provided and should include the title of the article, authors' names with full first name (with degrees), authors' affiliation, suggested running title and corresponding author. The affiliation should comprise the department, institution (usually university or company), city and state (or nation). The suggested running title should be less than 50 characters (including spaces) and should comprise the article title or an abbreviated version thereof. For office purposes, the title page should include the name and complete mailing address, telephone and fax number, and email of the one author designated to review proofs.
- 8. An abstract no longer than 250 words for reviews and research articles is to be provided as the second page. Abstract should be structured as objective(s) (including purpose setting), materials and methods, results, and conclusion.

Instruction for Authors

- **Case Report**
- A case report is a case study, case report, or other description of a case that should contain 1500 - 2000 words with a structured abstract of 200 words maximum. Case reports should comprise sections of Introduction, Case Presentation, and Conclusions in Abstract and Introduction, Case Presentation, and Discussion in full text with not more than 2 tables or figures and up to 20 references.
- **Brief Report**
- Brief Reports should contain 1000 - 2000 words with a structured abstract of 200 words maximum. Short reports should comprise sections of Background, Objectives, Materials & Methods, Results and Discussion with not more than 2 tables or figures and up to 20 references.
- **Short Communication**
- Short Communication, follow the instructions for original articles, except that the total word number of the main text (excluding references, tables and figure legends) is limited to 2000 with no more than 2 figures and/or tables and no more than 15 references. An abstract, not exceeding 150 words, should be presented at the beginning of the article.
- **News**
- News should contain 1000 - 2000 words with a structured abstract of 200 words maximum. News should comprise sections of Background, Objectives, Materials & Methods, Results and Discussion with not more than 2 tables or figures and up to 20 references.
-
- **Publication Policies**
- Manuscripts, or the essence of their content, must be previously unpublished and should not be under simultaneous consideration by another Journal. The authors should also declare if any similar work has been submitted to or published by another Journal. By virtue of the submitted manuscript, the corresponding author acknowledges that all the co-authors have seen and approved the final version of the manuscript. The corresponding author should provide all co-authors with information regarding the manuscript, and obtain their approval before submitting any revisions. Manuscripts are only accepted for publication on the understanding that the authors will permit editorial amendments, though proofs will always be submitted to the corresponding author before being sent finally to press. Prior to the initial submission of a new manuscript, please carefully consider that all authors' names are included as no change to authors' details will be permitted after the acceptance. The decision to accept a contribution rests with the Editorial Board of the NSD.
- Manuscripts will be considered for publication in the form of original articles, Case report, short communications, Letter to editor and review articles. The work should be original or a thorough by an authoritative person in a pertinent field.
- **Peer review process**
- All submissions will be reviewed anonymously by at least two independent referees. All manuscripts will be acknowledged upon presenting to the Journal office, provided that all stated requirements are met. Authors are encouraged to suggest names of three expert reviewers, but selection remains a prerogative of the Editor. The whole review process depends on receiving referees comments and revising the manuscripts based on these comments to the author. On receipt of the revised article from the author, and after final approving by referees, the letter of acceptance is issued to the author. Authors have the right to communicate to the editor if they do not wish their manuscript to be reviewed by a particular reviewer because of potential conflicts of interest. No article is rejected unless negative comments are received from at least two reviewers. **NSD employs double blind reviewing process, where both the referee and author remain anonymous throughout the process.**



Instruction for Authors

- **Ethical Rules and Rights**

- **Conflicts of interest**

- Conflicts of interest arise when authors, reviewers, or editors have interests that are not fully apparent and that may influence their judgments on what is published. They have been described as those which, when revealed later, would make a reasonable reader feel misled or deceived. (The Committee on Publication Ethics (COPE) states in its Guidelines on Good Publication Practice 2003).
- Authors should disclose, at the time of submission, information on financial conflicts of interest or other interests that may influence the manuscript. Authors should declare sources of funding for the work undertaken.

- **The Journal's Policy on Plagiarism**

- Any practice of plagiarism will not be tolerated by the journal regarding submitted manuscripts. Non-identifiable quoted segments of articles or close paraphrases from other author/s or even submitting the author's previously published work are known as the act of plagiarism by this journal unless proper use of quotations or paraphrasing with decent citation or referencing are in place. Heavy use of one or a couple of articles is discouraged, even if paraphrased fully. Adherent practice of plagiarism will abort reviewing process or later submission to this journal. All submitted articles will evaluate by *iThenticate* software belonged to cross check for stop any plagiarism and improve publication quality.

- **Statement of Human and Animal Rights**

- All submitted articles involving human experiments should be performed only in accordance with the ethical standards provided by the responsible committee of the institution and in accordance with the Declaration of Helsinki (as revised in Edinburgh 2000), available at <http://www.wma.net/en/30publications/10policies/b3/index.html>. Papers describing animal experiments can be accepted for publication only if the experiment conforms the National Institute of Health Guide (National Institute of Health Publications No. 80-23, Revised 1978) for the care and use of Laboratory Animals for experimental procedure. Authors must provide a full description of their anesthetics and surgical procedures. All manuscripts reporting the results of experimental investigations involving human subjects should include a statement confirming the informed consent was obtained from each subject or subject's guardian.

- **Humans:** When reporting experiments on human subjects, authors should indicate whether the procedures followed were in accordance with the ethical standards of the responsible committee on human experimentation (institutional and national) and with the Helsinki Declaration of 1975, as revised in 2008 (5). If doubt exists whether the research was conducted in accordance with the Helsinki Declaration, the authors must explain the rationale for their approach and demonstrate that the institutional review body explicitly approved the doubtful aspects of the study.

- **Animals:** When reporting experiments on animals, authors should indicate whether the institutional and national guide for the care and use of laboratory animals was followed.

- All animal or human subjects should be used after approval of the experimental protocol by a local ethics committee.

- **Acknowledgements**

- Contributors: In acknowledgement section, name people for their contributions or their permission to reproduce their published material, to use their illustrations or provide information about them- try to fully name people who have helped from the conception of the idea to adoption of the hypothesis, to finalization of the study, etc., earnestly. Statement of financial support: Aside from the title page, state any financial or other relationships that might lead to a conflict of interest.

- **Copyright**

- After acceptance and publication; all ownership rights and Copyrights of the manuscript, passes to international journal of Natural Science and Discovery. Please complete copyright form and send via email to editor. [Download NSD Copyright Transfer and Author Consent Form](#)

- This work is licensed under a [Creative Commons Attribution-NonCommercial 4.0 International License](#).

- Copyright © 2016: The Author(s); This is an open-access article distributed under the terms of the Creative Commons Attribution License (<http://creativecommons.org/licenses/by/4.0>), which permits unrestricted use, distribution, and reproduction in any medium, provided the original work is properly cited. All Rights reserved by international journal of Medical Science and Discovery.

- **Disposal of material**

- Once published, all draft copies of the manuscript, correspondence and artwork will be held at least for 6 months before disposal. Authors and Readers may find original PDF file of article on backup servers such as CLOKKS (<https://www.clockss.org/>)

- **Digital Object Identifier DOI**

- Once a manuscript is accepted for publication it will be provided with a registered DOI number following the acceptance decision. Manuscripts accepted for publication by the NSD will be published as ahead of print articles prior to the printing date of their scheduled issue. Corresponding author will be provided with a PDF Proof by the publisher once the production process of an accepted manuscript is over.

Instruction for Authors

- **Article Processing Charge**
- NSD is a non-profit Scientific Journal Platform; however, it uses professional services such as Language Editing, DOI, domain and hosting, iThenticate Plagiarism or similarity detection Detection Software. All of these professional services are used for all the article processes and an inevitable cost arises with this.
- Unfortunately, like most open journals, fees of the publication with NSD are charged to Authors. Payment is under the responsibilities of corresponding Author(s). NSD does not charge any fee during the submission period. However, after the peer-review process, a non-refundable charge (100 USD) for each accepted manuscript must be paid by the author(s) via NSD's official PayPal account. An invoice will be sent for each accepted manuscript to corresponding author(s).
- **Following with completion of payment procedure, the galey proof and acceptance letter of article will be send to authors for last check**
- Preperation of articles in PDF and HTMLformat is covered by Lycia Press Inc. (press.lycians.com) and Article Processing Charges paid to Lycia Press Inc. (press.lycians.com)
- **NSD revenue sources and Sponsorships**
- All costs arising from the publications are covered by the Sponsor Companies and Article Processing Charges. Sponsorship request evaluates by the NSD Journal Management Board and the **sponsor company logos** will be included on the back page of printed magazine and in the sponsor section of journal website

	Article Processing Charge (APC)	Discount %
Regular	100 USD	
for Editorial Board Members	70 USD	30%
for Affiliated Institution Members	80 USD	20%

- *APC not includes Proofreading Services fee. Editor in Chief may direct the corresponding Author to Lycia Press, Language Office for Proofreading Service www.lycians.com
-
- **References**
- Committee on Publication Ethics (COPE). (2011, March 7). Code of Conduct and Best-Practice Guidelines for Journal Editors. Retrieved from http://publicationethics.org/files/Code_of_conduct_for_journal_editors_Mar11.pdf
- World Association of Medical Editors (WAME). Principles of Transparency and Best Practice in Scholarly Publishing. <http://www.wame.org/about/principles-of-transparency-and-best-practice>

Contents

Original Article

- 1 With Copula function analysis of structure dependence relation between Exchange rate of dollars and Deposit rate of Turkey
Ayse Metin Karakas, Mine Dogan

With Copula function analysis of structure dependence relation between Exchange rate of dollars and Deposit rate of Turkey

Ayse Metin Karakas^{1*}, Mine Dogan²

Abstract

Objective: In this study, for relation between exchange rate of dollar and deposit rate of Turkey, we used copula function modelling.

Material and Methods: For study, data set that gotten from Turkey central bank in the between 2005-2017 years used.

Results: Recently, rapidly increasing of exchange rate of dollars has been effected deposit rate. In our study, according to data sets, there is a positively relation between exchange rate of dollars and deposit rate. Hence, response of central bank has been showed positively for deposit rate in the increasing of exchange rate of dollars. Throughout study, dependency between exchange rate of dollar and deposit rate obtained positively, namely Kendall Tau ($\tau=0,751$) and Spearman's Rho ($\rho=0,912$). This dependency modelled copula function. For this modelling, Chi-Square test that is Goodness-of-fit used.

Conclusion: As result of this test, for our data set is suitable with parameter Joe copula family which is supported positive tail dependence.

Key Words: Copula function, Deposit rate, Exchange rate of dollars, Goodness-of-fit test Kendall Tau, Spearman's Rho.

1. Introduction

In recent years, the copula functions have literally be located in finance sector. Although the application of copula in finance is principal in risk management and option pricing, other applications have been suggested. The advantages of using a copula by way of correlation have been modelled dependencies between variables in financial models. Pair wise correlation and the marginal distributions of a random vector is not enough to determine its joint distribution. The copula works by joining together the marginal distributions to form a joint distribution. Thus, the dependence relationship is completely determined by the copula. From a theoretical point of view, copulas let the dependence structure of random variables to be modelled without assumptions on the parametric form of the marginal distributions.

In 1959, A. Sklar firstly introduced the general notions of a copula (1981 By. B. Schweizer and E. F. Wolff). Cherubini and Luciano (2001) used Archimedean copulas to examine the tail position of distributions and VaR. Malevergne and Sornette (2003) used a copula representation to redefine the portfolio selection theory. Rosenberg and Schuermann (2006) used the copula modelling to aggregate market risk, credit risk and operational risk. Copula is strong equipment to form multidimensional distributions with given or observed marginals. Such that this is strong equipment in financial modelling, it comes to take the lack of normality in returns and the dependence between of extreme values. (Genest et al., 2009).



2. Material and Methods

The copula is defined as a $C : [0, 1]^2 \rightarrow [0, 1]$ that ensures the limiting conditions

$$\checkmark \quad C(u, 0) = C(0, u) = 0 \text{ and } C(u, 1) = C(1, u) = u, \forall u \in [0, 1].$$

$$\checkmark \quad (u_1, u_2, v_1, v_2) \in [0, 1]^4, \text{ such that } u_1 \leq u_2, v_1 \leq v_2 \\ C(u_2, v_2) - C(u_2, v_1) - C(u_1, v_2) + C(u_1, v_1) \geq 0.$$

Ultimately, for twice differentiable and 2-increasing property can be replaced by the condition

$$c(u, v) = \frac{\partial^2 C(u, v)}{\partial u \partial v} \geq 0 \quad (1)$$

where $c(u, v)$ is the copula density. In the following, for n -uniform random U_1, U_2, \dots, U_n variables, the joint distribution function C is defined

$$C(u_1, u_2, \dots, u_n, \theta) = P(U_1 \leq u_1, U_2 \leq u_2, \dots, U_n \leq u_n).$$

Here θ is dependence parameter. [1,2,3,4,5,7,8,9,10]

2.1. Sklar Theorem: Let X and Y be random variables with continuous distribution functions F_X and F_Y , with $F_X(X)$ and $F_Y(Y)$ are uniformly distributed on the interval $[0, 1]$. Then, there is a copula such that for all $x, y \in R$,

$$F_{XY}(X, Y) = C(F_X(X), F_Y(Y)). \quad (2)$$

The copula C for (X, Y) is the joint distribution function for the pair $F_X(X), F_Y(Y)$ provided F_X and F_Y continuous. [1,2,3,4,5,7,8,10,11,12,13,14]

2.2. Archimedean Copula: Let ϕ define a function $\phi : [0, 1] \rightarrow [0, \infty]$ which is continuous and provides:

$$\checkmark \quad \phi(1) = 0, \phi(0) = \infty.$$

$$\checkmark \quad \text{For all } t \in (0, 1), \phi'(t) < 0, \phi \text{ is decreasing, for all } t \in (0, 1) \phi''(t) \geq 0, \phi \text{ is convex.}$$

ϕ has an inverse $\phi^{-1} : [0, \infty] \rightarrow [0, 1]$, which has the same properties out of $\phi^{-1}(0) = 1$ and $\phi^{-1}(\infty) = 0$.

The Archimedean Copula is defined by

$$C(u, v) = \phi^{-1}[\phi(u) + \phi(v)]. \quad (3)$$

2.3. Gumbel Copula: This Archimedean copula is defines with the help of generator function $\phi(t) = (-\ln t)^\theta$, $\theta \geq 1$;

$$C_\theta(u, v) = \exp\left(-[(-\ln u)^\theta + (-\ln v)^\theta]^{1/\theta}\right) \quad (4)$$

Where θ is the copula parameter restricted to $[1, \infty)$. This copula is asymmetric, with more weight in the right tail. Beside this, it is extreme value copula [12].

2.4. Clayton Copula: This Archimedean copula is defines with the help of generator function

$$\phi(t) = \frac{t^{-\theta} - 1}{\theta}, \theta \in [-1, \infty) / \{0\}$$

$$C_{\theta}(u, v) = (u^{-\theta} + v^{-\theta} - 1). \quad (5)$$

Where θ is the copula parameter restricted to $(0, \infty)$. This copula is also asymmetric, but with more weight in the left tail [12].

2.5. Frank Copula: This Archimedean copula is defines with the help of generator function;

$$\phi(t) = -\ln \frac{-e^{-\theta t} - 1}{e^{-\theta} - 1}, \theta \in R / \{0\};$$

$$C_{\theta}(u, v) = -\frac{1}{\theta} \ln \left(1 + \frac{(e^{-\theta u} - 1)(e^{-\theta v} - 1)}{(e^{-\theta} - 1)} \right) \quad (6)$$

where θ is the copula parameter restricted to $(0, \infty)$ [12].

2.6. Joe Copula: This Archimedean copula is defines with the help of generator function

$$C_{\theta}(u, v) = 1 - \left[(1-u)^{\theta} + (1-v)^{\theta} - ((1-u)^{\theta} (1-v)^{\theta}) \right]^{1/\theta} \quad (7)$$

Where θ is the copula parameter restricted to $[1, \infty]$. This copula family is similar to the Gumbel. The right tail positive dependence is stronger more than Gumbel [12].

2.7. Plackett Copula: This copula function is defines

$$C(u, v) = \frac{1 + (\theta - 1) - \sqrt{[1 + (\theta - 1)(u + v)]^2 - 4\theta(\theta - 1)uv}}{2(\theta - 1)}. \quad (8)$$

Where θ is the copula parameter restricted to $(0, \infty)$ [12].

2.8. Measuring Dependence

2.8.1 Spearman's Rho: Similar to approach of Pearson correlation coefficient, to compute the correlation between the pairs (R_i, S_i) of ranks have been used. Thus, Spearman's Rho

$$\rho_n = \frac{\sum_{i=1}^n (R_i - \bar{R})(S_i - \bar{S})}{\sqrt{\sum_{i=1}^n (R_i - \bar{R})^2 \sum_{i=1}^n (S_i - \bar{S})^2}} \in [-1,1] \tag{9}$$

where

$$\bar{R} = \frac{1}{n} \sum_{i=1}^n R_i = \frac{n+1}{2} = \frac{1}{n} \sum_{i=1}^n S_i \tag{10}$$

write. This coefficient that stated expediently in the form

$$\rho_n = \frac{12}{n(n+1)(n-1)} \sum_{i=1}^n R_i S_i - 3 \frac{n+1}{n-1}. \tag{11}$$

Also, ρ_n is asymptotically unbiased estimator of

$$\rho = 12 \int_{[0,1]^2} uv dC(u, v) - 3 = 12 \int_{[0,1]^2} C(u, v) dudv - 3 \tag{12}$$

where the second equality is obtain. Genest (2007). This statement extended Quesada- Molina (1992)

$$12 \int_{[0,1]^2} uv dC_n(u, v) - 3 = \frac{12}{n} \sum_{i=1}^n \frac{R_i}{n+1} \frac{S_i}{n+1} - 3 = \frac{n-1}{n+1} \rho_n \tag{13}$$

and $C_n \rightarrow C$ as $n \rightarrow \infty$. Here the null hypothesis $H_0 = C = \Pi$ of independence of X and Y , the distribution of ρ_n is normal with zero mean and variance $1/(n-1)$, thus for H_0 approximate $\alpha = 0.05$, $\sqrt{n-1} |\rho_n| > z_{\alpha/2} = 1,96$ Genest (2007).

2.8.2. Kendall Tau: Another measure of dependence is Kendall Tau. This measure based on ranks given by

$$\tau_n = \frac{P_n - Q_n}{\binom{n}{2}} = \frac{4}{n(n-1)} P_n - 1 \tag{14}$$

where P_n and Q_n number of concordant and discordant pairs respectively. Here, $(X_i, Y_i), (X_j, Y_j)$ pairs are concordant $(X_i - X_j)(Y_i - Y_j) > 0$ and these are disconcordant $(X_i - X_j)(Y_i - Y_j) < 0$.

If $(X_i - X_j)(Y_i - Y_j) > 0$; we can say $(R_i - R_j)(S_i - S_j) > 0$. τ_n is function of copula C_n . As $n \rightarrow \infty$,

$$C_n \rightarrow C, W = \frac{1}{n} \sum_{j=1}^n I_{ij} = \frac{1}{n} \#\{j : X_j \leq X_i, Y_j \leq Y_i\},$$

$$\tau_n = 4 \frac{n}{n-1} \bar{W} - \frac{n+3}{n-1} = 4 \int_{[0,1]^2} C(u, v) dC(u, v) - 1 \tag{15}$$

written. τ_n is asymptotically unbiased estimator of τ and τ_n is normal with zero mean and variance $2(2n + 5)/\{9n(n - 1)\}$. Here the null hypothesis $H_0 = C = \Pi$ of independence of X and Y , thus for H_0 approximate $\alpha = 0.05$, $\sqrt{9n(n - 1)/2(2n + 5)}|\tau_n| > 1.96$ Genest (2007).

Table 1: Generator, Parameter space, Kendall Tau and Spearman Rho values of Special Copula Families

Family	Generator	Parameter	Kendall Tau	Spearman Rho
Gumbel	$\phi(t) = (-\ln t)^\theta$	$\theta \in [1, \infty)$	$\frac{\theta - 1}{\theta}$	
Clayton	$\phi(t) = \frac{t^{-\theta} - 1}{\theta}$	$\theta \in [0, \infty)$	$\frac{\theta}{\theta + 2}$	
Frank	$\phi(t) = -\ln \frac{-e^{-\theta t} - 1}{e^{-\theta} - 1}$	$\theta \in (-\infty, \infty)$	$1 - \frac{4}{\theta} [1 - D_1(\theta)]$	$1 - \frac{12}{\theta} [D_2(-\theta) - D_1(-\theta)]$
Joe	$\phi(t) = -\ln [1 - (1 - t)^\theta]$	$\theta \in [1, \infty)$	$1 + \frac{4}{\theta} D_J(\theta)$	-
Plackett	-	$\theta \in (0, \infty)$	-	$\frac{\theta + 1}{\theta - 1} - \frac{2\theta \ln \theta}{(\theta - 1)^2}$

3. Application

In this study, we used weekly values of deposit rate and exchange rate of dollars from 30.12.2005 to 13.01.2017 that gotten central bank in Turkey. For our data set, we are to select suitable copula family, we firstly form matrix for observed frequencies of deposit rate and exchange rate of dollars. Table 2 presents 5x5 matrix of these variables. For the data set, we obtain Kendall Tau 0,751 and Spearman’s Rho 0,912. Next step of this study, we are to find the best appropriate copula family and the selected copula family is statistically tested. Best model for our data is find by comparing empirical results.

Table 2: For data observed values

	Y_1	Y_2	Y_3	Y_4	Y_5	Sum
X_1	79	31	5	1	0	116
X_2	27	59	29	0	0	115
X_3	5	22	55	32	2	116
X_4	4	3	26	74	8	115
X_5	1	0	1	8	106	116
Sum	116	115	116	115	116	578

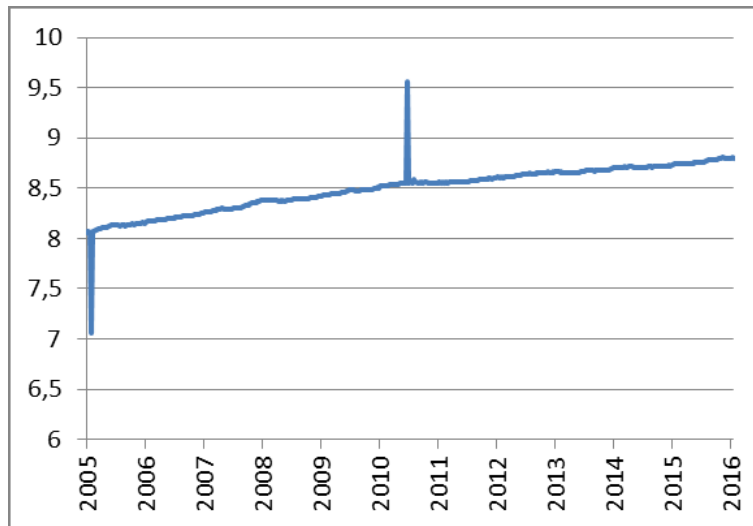


Figure 1: Weekly Deposit Rate of Turkey

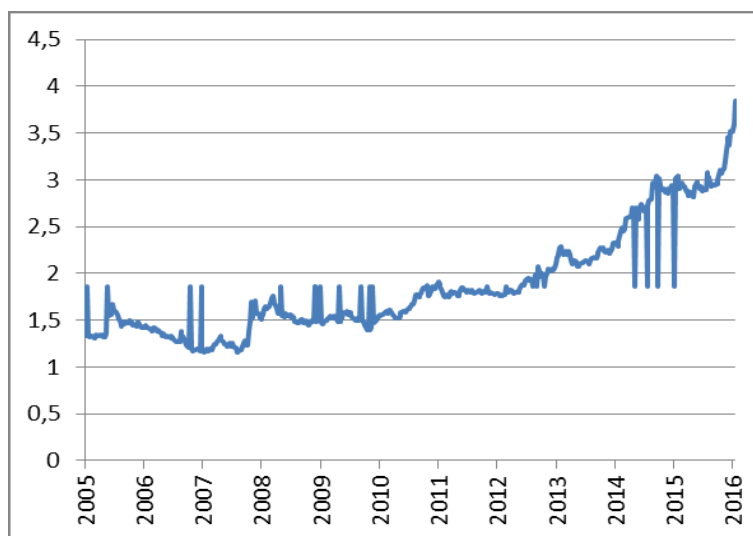


Figure 2: Weekly Exchange Rate of Dollars

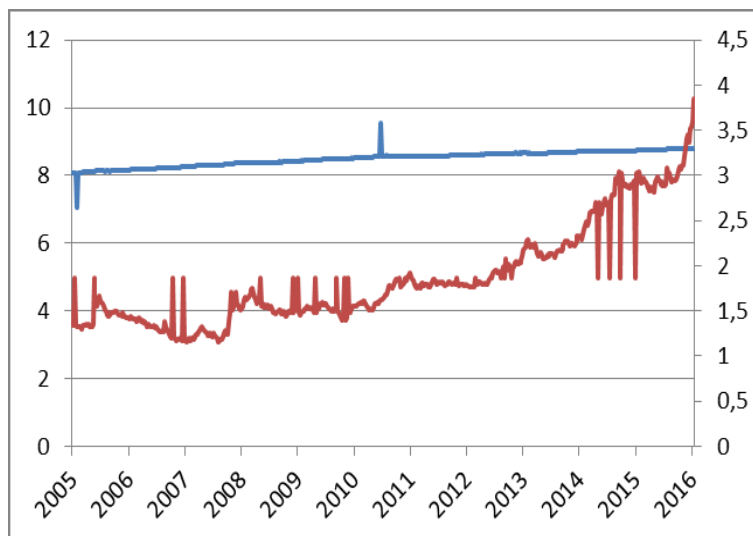


Figure 3: Change of Weekly Deposit Rate of Turkey and Exchange Rate of Dollars

Table 3: For Data Descriptive Statistics

Variable	Maximum	Minumum	Std.Dev.	Skewness	Kurtosis	Jarque-Bera
Deposit Rate	9,556957	7,064077	0,216855	-0,64521	5,85234	235,6335
Exchange rate of Dollars	3,849900	1,159200	0,558684	1,08177	3,33591	115,2508

3.1. Gumbel Hougaard and Kendall Tau Dependency Estimation

The connection between Kendall Tau and Gumbel Hougaard copula family is given table 1. From this statement the parameter $\hat{\theta}$ of Gumbel Hougaard copula family is estimated value of 4,016064. The expected frequencies of the $\hat{\theta}$ parameter shows in table 4. Chi-Square value of Gumbel Hougaard copula family calculates as 29,81389. The critical value of Chi-Square test with 16 of freedom and 0,05 confidences level is 26,29623, accordingly Gumbel Hougaard copula family unsuitable for our data set.

Table 4: For Gumbel Hougaard Copula Family Expected Values

	Y_1	Y_2	Y_3	Y_4	Y_5	Sum
X_1	85	26	4	1	0	116
X_2	26	58	27	4	0	115
X_3	4	27	58	25	2	116
X_4	1	4	25	68	17	115
X_5	0	0	2	17	97	116
Sum	116	115	116	115	116	578

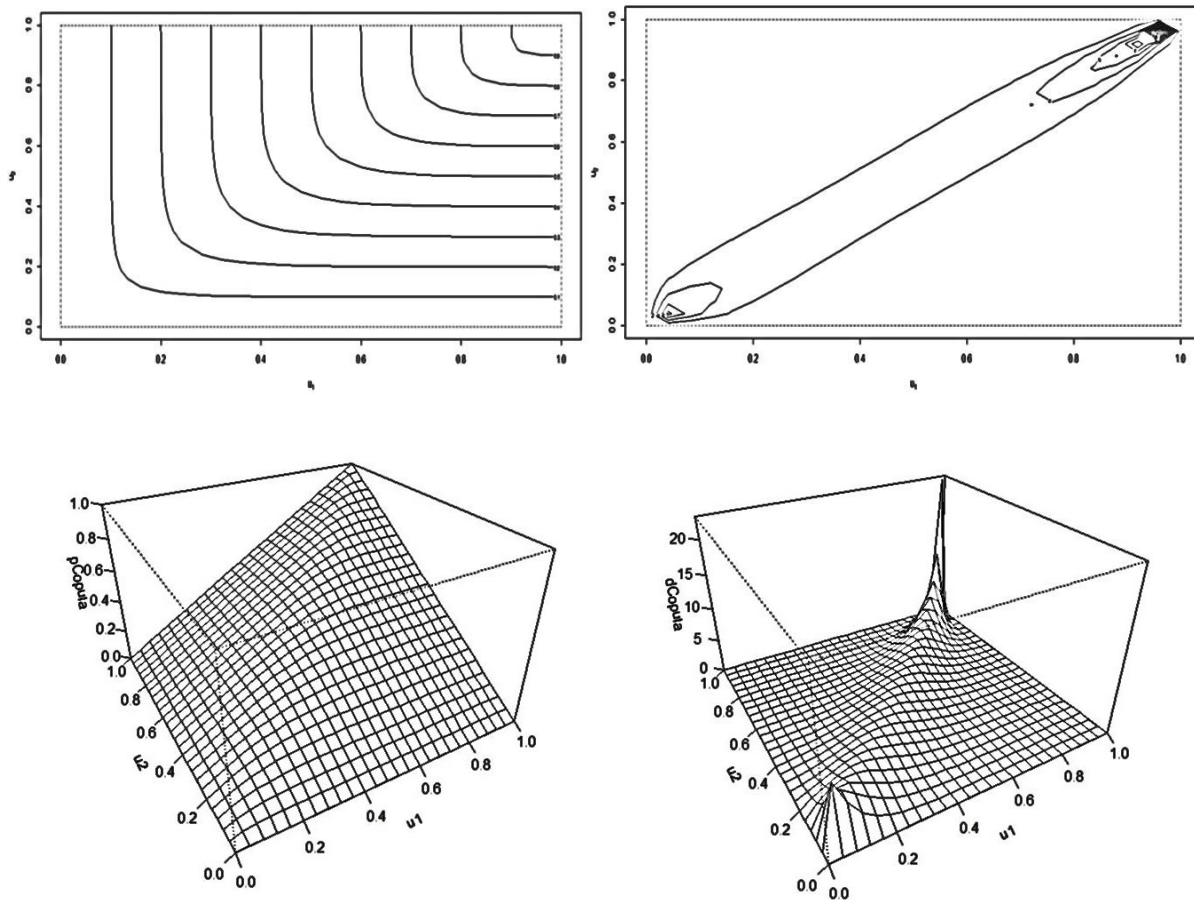


Figure 4: Respectively two and three dimension for Gumbel Hougaard Copula family $\theta = 4,016064$, probability and distribution function

3.2. Clayton and Kendall Tau Dependency Estimation

The connection between Kendall Tau and Clayton copula family is given table 1. From this statement the parameter $\hat{\theta}$ of Clayton copula family is estimated value of 6.032129. The expected frequencies of the $\hat{\theta}$ parameter shows in table 5. Chi-Square value of Clayton copula family calculates as 163,1352. The critical value of Chi-Square test with 16 of freedom and 0,05 confidences level is 26,29623, accordingly Clayton copula family unsuitable for our data set.

Table 5: For Clayton Copula Family Expected Values

	Y_1	Y_2	Y_3	Y_4	Y_5	Sum
X_1	103	12	1	0	0	116
X_2	12	79	21	3	0	115
X_3	1	21	60	27	7	116
X_4	0	3	27	52	33	115
X_5	0	0	7	33	76	116
sum	116	115	116	115	116	578

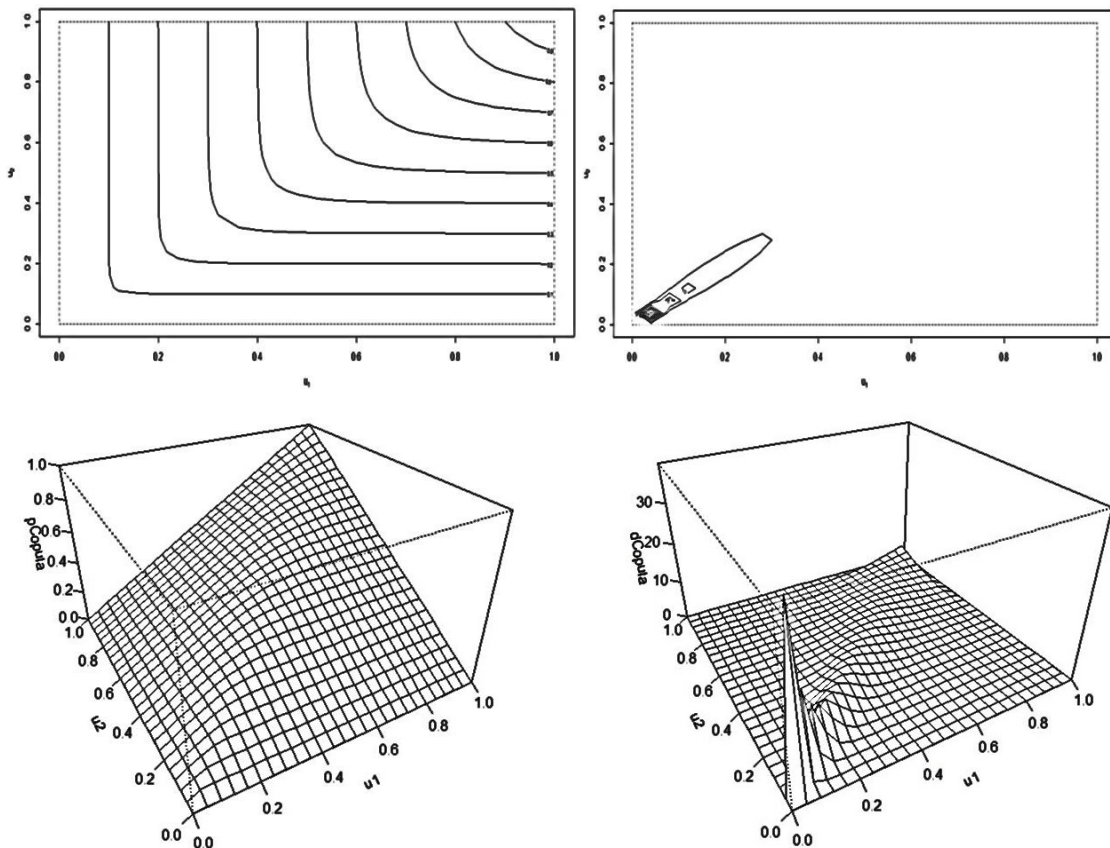


Figure 5: Respectively two and three dimension for Clayton Copula family $\theta = 6,032129$, probability and distribution function

3.3. Frank and Kendall Tau Dependency Estimation

The connection between Kendall Tau and Frank copula family is given table 1. From this statement the parameter $\hat{\theta}$ of Frank copula family is estimated value of 14,20389. The expected frequencies of the $\hat{\theta}$ parameter shows in table 6. Chi-Square value of Frank copula family calculates as 61,01967. The critical value of Chi-Square test with 16 of freedom and 0,05 confidences level is 26,29623, accordingly Frank copula family unsuitable for our data set.

Table 6: For Frank Copula Family Expected Values

	Y_1	Y_2	Y_3	Y_4	Y_5	Sum
X_1	89	24	2	1	0	116
X_2	24	66	24	1	0	115
X_3	2	24	64	24	2	116
X_4	1	1	24	64	25	115
X_5	0	0	2	25	89	116
sum	116	115	116	115	116	578

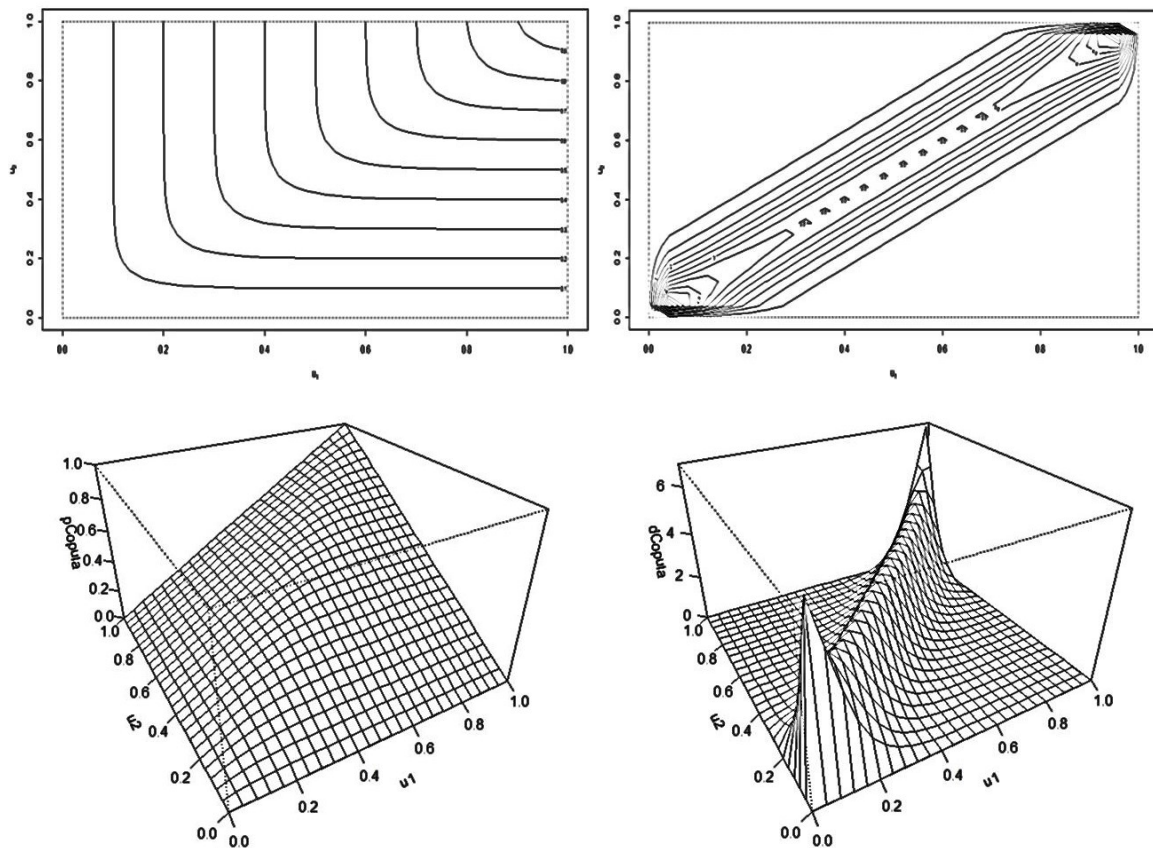


Figure 6: Respectively two and three dimension for Frank Copula family $\theta = 14,20389$, probability and distribution function

3.4. Joe and Kendall Tau Dependency Estimation

The connection between Kendall Tau and Joe copula family is given table 1. From this statement the parameter $\hat{\theta}$ of Joe copula family is estimated value of 6,8142. The expected frequencies of the $\hat{\theta}$ parameter shows in table 6. Chi-Square value of Joe copula family calculates as 24,26596. The critical value of Chi-Square test with 16 of freedom and 0,05 confidences level is 26,29623, accordingly Joe copula family suitable for our data set.

Table 7: For Joe Copula Family Expected Values

	Y_1	Y_2	Y_3	Y_4	Y_5	Sum
X_1	75	33	7	1	0	116
X_2	33	54	26	2	0	115
X_3	7	26	61	22	0	116
X_4	1	2	22	78	12	115
X_5	0	0	0	12	104	116
sum	116	115	116	115	116	578

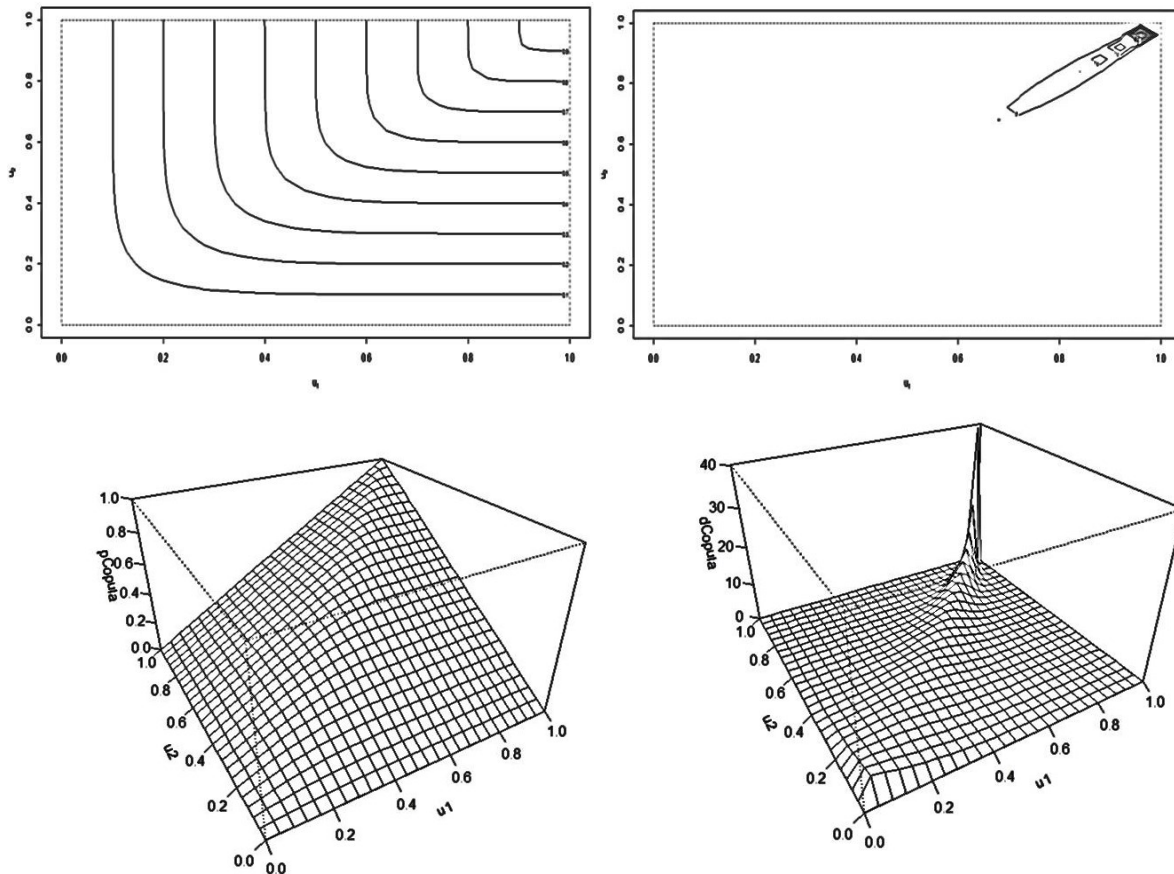


Figure 7: Respectively two and three dimension for Joe Copula family $\theta = 6,8142$, probability and distribution function

3.5. Plackett Copula Family and Spearman’s Rho Dependency Estimation

The connection between Spearman’s Rho and Plackett copula family is given table 1. From this statement the parameter $\hat{\theta}$ of Plackett copula family is estimated value of 78,7905. The expected frequencies of the $\hat{\theta}$ parameter shows in table 6. Chi-Square value of Plackett copula family calculates as 64,65556. The critical value of Chi-Square test with 16 of freedom and 0,05 confidences level is 26,29623, accordingly Plackett copula family unsuitable for our data set.

Table 7: For Plackett Copula Family Expected Values

	Y_1	Y_2	Y_3	Y_4	Y_5	Sum
X_1	93	19	2	1	1	116
X_2	19	72	21	3	0	115
X_3	2	21	69	21	3	116
X_4	1	3	21	72	18	115
X_5	1	0	3	18	94	116
sum	116	115	116	115	116	578

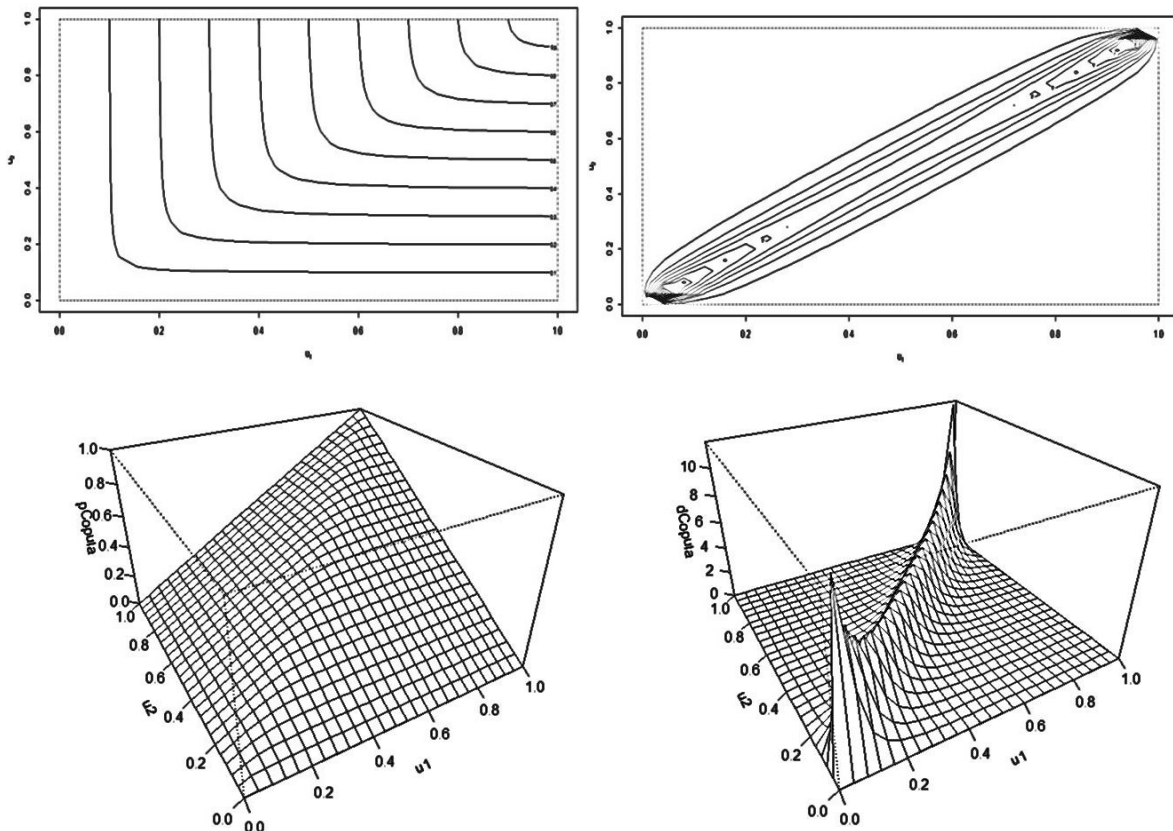


Figure 8: Respectively for two and three dimension Plackett Copula family $\theta = 78,79507$ probability and distribution function

Conclusion

Nowadays, at the start of economy subject that has been mostly discussed comes topic of rate. If rate of dollar rise, it wait attempt of central bank. Aim of central bank is to provide price stability. Central Bank is not interesting adjustment policies but at the same time, extreme change of rate is become, it is study to remove this extreme change with foreign exchange purchase transaction. There is a relation between Deposit Rate and Exchange Rate of Dollars and for this relation is study about how strong. In this study degree of dependence between Deposit Rate and Exchange Rate of Dollars is obtained strong. The statistically significant copula algorithm can estimate. Dependency is modelling the Joe copula family ($\theta = 6,8142$) with Kendall Tau ($\tau = 0,751$). From this point of, The Joe copula is similar to Gumbel Copula, but the right tail positive dependence stronger. From this study, response of central bank on exchange Rate of Dollars is positively. Central Bank is response with purchase and sale on the exchange rate of dollars, when Extreme change of rate and statuses that it is break markets. Particularly, exchange rate fluctuations are cause development of our economic or in negativeness developments of derived from outside. In such cases, response of Central Bank is right positively.

Conflict of interest: The authors declare they have no potential conflicts of interest with respect to the research, authorship, and/or publication of this article, and declare study has ethical permissions if required.

Acknowledgement: Contribution of Authors; **AK MD:** Concept, Design and Data Analysis, **AK:** Writing, Editing

References

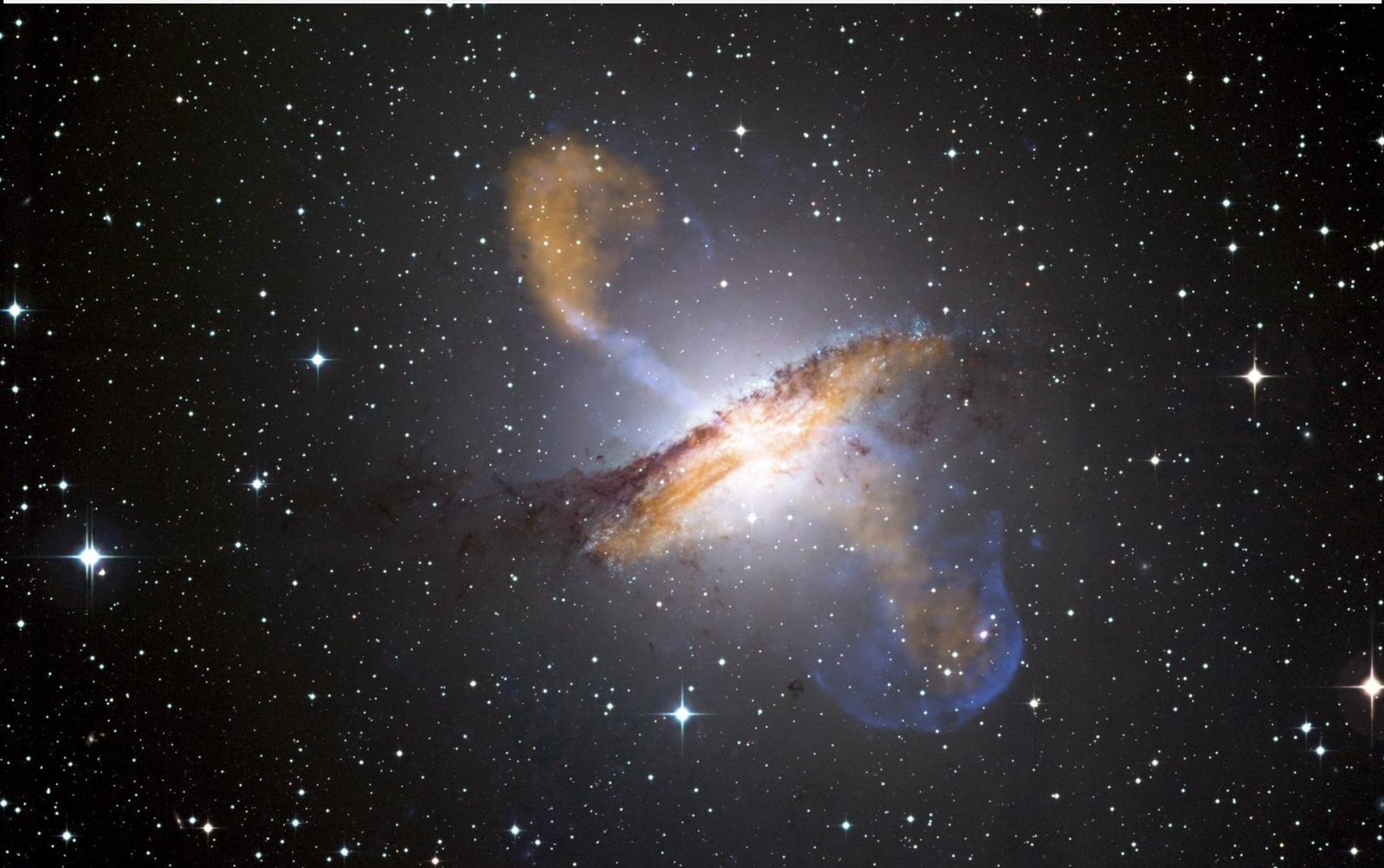
1. A. Sklar. Fonctions de Repartition a n Dimensions et Leurs Marges. Publications de l'Institut de Statistique de l'University de Paris. 1959; 8: 229-231.
2. B. Schweizer, E.F Wolff. On nonparametric measures of dependence for random variables. *Annals of Statistics*. 1981; 9: 879-885.
3. Cherubini, U., Luciano, E.. Value-at-Risk Trade-off and Capital Allocation with Copulas. *Economic Notes*. 2001; 30: 235–256.
4. E.W. Frees, E.A. Valdez. Understanding relationships using copulas. *North American Actuarial Journal*. 1998; 2:1-25.
5. Genest C., J. MacKay.V. The joy of copulas: bivariate distributions with uniform marginal. *The American Statistician*. 1986; 40: 280-283.
6. Genest C. L.P. Rivest. Statistical inference procedures for bivariate Archimedean copulas. *Journal of the American Statistical Association*. 1993; 88 (423): 1034-1043.
7. Genest, C., Favre, A.-C. Everything You Always Wanted to Know About Copula Modelling but Were Afraid to Ask. *Journal of Hydrologic Engineering*. 2006; 12: 347-368.
8. Genest, C., Gendron, M., Boudeau-Brien, M. The Advent of Copulas in Finance. *The European Journal of Finance*. 2009;15: 609-618.
9. Malevergne, Y., Sornette, D. Testing the Gaussian Copula Hypothesis for Financial Assets Dependences. *Quantitative Finance*. 2003; 3 (4): 231-250.
10. Metin A, Çalık S. Copula Function and Application with Economic Data. *Turkish Journal of Science and Technology*. 2012; 7(2):199-204.
11. Naifar N. Modeling dependence structure with Archimedean copulas and applications to the iTraxx CDS index. *Journal of Computational and Applied Mathematics*. 2010; 235: 2459-2466
12. R. Nelsen. *An Introduction to Copulas*. Springer: Verlag; 1999.
13. Rosenberg, J., Schuermann, T. A General Approach to Integrated Risk Management with Skewed, Fat-tailed Risks. *Journal of Financial Economics* . 2006; 79: 569-614.
14. Shih, J.H., Louis, T.A. Inferences on the Association Parameter in Copula Models for Bivariate Survival Data. *Biometrics*. 1995; 51: 1384-1399.
15. Quesada-Molina, J.J. A generalization of an identity of Hoeffding and some applications. *J.Ital.Stat.Soc*. 1992; 3: 405-411.



NATURAL SCIENCE & DISCOVERY

ISSN: 2149-6307

Lycia Press LONDON UK



International Journal of
Natural Science and Discovery
Open Access Scientific Journal
2017, Vol.3, No.1



www.natscidiscovery.com