

- sP-Selectin and sICAM-1 potential biomarkers in status epilepticus?
- Transcranial Magnetic Stimulation
- Fine needle aspiration cytology (FNAC)
- illness perception and quality of life in thyroid patients who received radioactive iodine-131
- Application of circular statistics to life science data

International Journal of
Medical Science and Discovery
Open Access Scientific Journal
ISSN: 2148-6832
www.medscidiscovery.com
Lycia Press LONDON U.K.

Medical Science and Discovery (<http://www.medscidiscovery.com>) is an international open access, peer-reviewed scientific research journal that provides rapid publication of articles in all disciplines of human health, clinical and basic medical science such as Biophysics, Biochemistry, Histology, Physiology, Genetics, Pathology, Toxicology, Anatomical Sciences, Pharmacology, Embryology, Internal and Surgical Medicine.

The policy of top priority of MSD is to put forward and highlight medical innovations and inspiring patents.

MSD offers an exceptionally fast publication schedule including prompt peer-review by the experts in the field and immediate publication upon acceptance. The editorial board aims at reviewing the submitted articles as fast as possible and promptly including them in the forthcoming issues.

This journal is published under ethical publishing policy of international scientific Bioethics and publication rules.

MSD supports the Open Access Initiative. Abstracts and full texts (HTML and PDF format) of all articles published by MSD are freely accessible to everyone immediately upon publication.

Indexed Databases: Chemical Abstracts (CAS), Index Copernicus, Open Air, ULRICHS Database, Proquest, Advanced Science Index, Turkish Citation Index, Research Bible, Scholar Google, NLM Catalog

Medical Science and Discovery is an international open access, peer-reviewed scientific research journal.

ISSN: 2148-6832 (Print) E-ISSN: 2148-6832 (Online)

Category: Multi Disciplinary Health Science Journal

Abbreviated key title: Med. Sci. Discov.

Frequency: Monthly

Review System: Double Blind Peer Review

Circulation: Globally, Online, Printed

Article Processing Charge (APC): Free

Licensing: CC-BY-NC 4.0 International License Environmental

Editor-in-Chief: Assoc. Prof. Dr. Dr. Ahmad Rajabzadeh, Anatomical Department of Lorestan, University of Medical Sciences, Tabriz, Iran

Established: 30.04.2014

Web address: www.medscidiscovery.com; <http://dergipark.ulakbim.gov.tr/msd>

E-mail : [editor \[at\] medscidiscovery.com](mailto:editor[at]medscidiscovery.com)

Phone : +44 020 3289 9294

Design and preparation of PDFs, Language editing, Web site design, Graphical design Services of international Journal of Medical Science and Discovery has been contracted with Lycia Press LONDON, UK (as Publisher), by the MSD Board of Directors

Publisher: Lycia Press Inc.

Address: 3rd Floor 86 - 90 Paul Street, EC2A 4NE, London, UK

Web address: www.lycians.com

Phone : +44 020 3289 9294

E-mail : [office \[at\] lycians.com](mailto:office[at]lycians.com)

E-mail : [info \[at\] lycians.com](mailto:info[at]lycians.com)

Honorary Editors

We are very grateful to our honorary editors for their contribution to science

Prof. Dr. Aziz Sancar
University of North Carolina, Dept. of Biochemistry-Biophysics, Chapel Hill, NC, USA
E-mail: aziz_sancar [at] med.unc.edu

Prof. Dr. Giancarlo BAROLAT
Barolat Institute, 1721 E 19th Ave #434, Denver, CO 80218, USA
E-mail: gbarolat [at] verizone.net

Prof. Dr. Joyce REARDON
University of North Carolina, Dept. of Biochemistry-Biophysics, Chapel Hill, NC, USA
E-mail: biocjtr [at] gmail.com

Prof. Dr. Metin TULGAR
Yuzuncu Yil University, School of Medicine, Dept. of Biophysics, Van, Turkey
E-mail: prof.tulgar [at] gmail.com

Editor in Chief

Assoc. Prof. Dr. Asghar Rajabzadeh
Anatomical Department, Lorestan University of Medical Sciences, Khorramabad, Iran
E-mail: editor [at] medscidiscoversy.com
E-mail: dr.a_rajabzadeh [at] yahoo.com
Phone: +98 938 472 7705

Deputy Editors

Assoc. Prof. Dr. Michael George KEMP
Wright State University, Biological Sciences Bldg II 148, 3640 Colonel Glenn Hwy, Dayton, OH 45435-0001 USA
E-mail: mike.kemp [at] wright.edu
Fax: +1 (937) 775-2614

Assoc. Prof. Dr. Zafer AKAN
Co-Founder MSD, Lycia Press., 3rd Floor 86 - 90 Paul Street, EC2A 4NE, London, UK
E-mail: zafer_akan [at] hotmail.com
Phone: +44 0 203 289 9294

Editorial Board Members

Prof. Dr. Arash KHAKI
Islamic Azad university ,Tabriz branch ,Dept. of Pathology, Tabriz Iran
E-mail: arashkhaki [at] yahoo.com

Ph.D. Nezahat Ozlem Arat
5380 Avenue du Parc Apt 4, H2V4G7, Montreal, QC, Canada
E-mail: aratzlem[at] gmail.com

Prof. Dr. Nobuo INOTSUME (Vice-president)
Hokkaido Pharmaceutical University, Clinical Pharmacology, Hokkaido AC, JAPAN
E-mail: nobuo_inotsume [at] hokuyakudai.ac.jp

Ph.D. Ozdemirhan SERCIN
Interdisciplinary Research Institute, Université Libre de Bruxelles, Belgium
E-mail: ozdemirhan.sercin [at] gmail.com

Ph.D. Shobhan GADDAMEEDHI
Washington State University College of Pharmacy, Dept. of Experimental and Systems Pharmacology, Spokane, WA, USA
E-mail: shobhan.gaddameedhi [at] wsu.edu

Ph.D. Younes El Bouzekri EL IDRISSE
Place Aboubakr, Imm 22, App 6, Bd Fal ould oumeir, Agdal Rabat
E-mail: y.elbouzekri [at] gmail.com

Ph.D. Christopher SCHMITT
University of California, San Francisco Cardiovascular Res. Inst. CA, USA
E-mail: schmittce [at] gmail.com

Ph.D. Yusuf Kemal Demir
Research and Development Scientist, Prinst Pharmaceuticals, North Carolina, USA
E-mail: phdykd [at] gmail.com

Lycia Press Inc. Editorial Office

Language Editor Elena JALBA
Reading University, London, UK
E-mail: office [at] lycians.com

Instruction for Authors

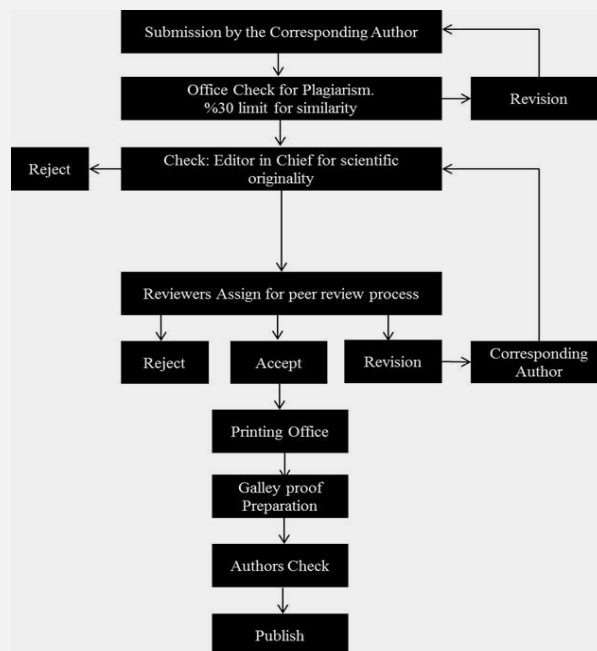
- **Important**
- MSD journal team, is committed to deterring plagiarism, including self-plagiarism. Your manuscripts will be screened for similarity detection with iThenticate, Similarity rate is expected under the %30 except for material and method section.
- For research studies using human or animal subjects, the trial's design, conduct and reporting of results must conform to Good Clinical Practice guidelines (such as the Good Clinical Practice in Food and Drug Administration (FDA)-Regulated Clinical Trials (USA) or the Medical Research Council Guidelines for Good Clinical Practice in Clinical Trials (UK)) and/or to the World Medical Association (WMA) Declaration of Helsinki
- Dear Authors, please upload just these three files to the manuscript submission system for article submissions.
- **1- Title Page Sample**
- **2- Manuscript Sample**
- **3- Copyright Transfer and Author Consent Form**
- Please select Keywords from the MESH source
- (<https://www.nlm.nih.gov/mesh/MBrowser.html>)
- Manuscripts should be prepared in accordance with the "Uniform Requirements for Manuscripts Submission to Biomedical Journals" proclaimed by the International Committee of Medical Journal Editors (www.icmje.org).
- MSD uses vancouver reference style, please prepare articles due to Vancouver reference style rules.
- Manuscript Preparation Rules
- 1.Cover letter
- a- A statement that the manuscript has been read and approved by all the authors.
- b- That the requirements for authorship have been met for all the authors, based on the criteria stated by ICMJE.
- c- Approval of all the authors regarding the order in which their names have appeared.
- d- That each author confirms the manuscript represents honest work.
- e- The name, address, and telephone number of the corresponding author who is responsible for communicating with other authors about revisions and final approval.
- f- The letter should give any additional information that may be helpful to the editor, such as the type or format of the article. If the manuscript has been submitted previously to another journal or in another language, it is helpful to include the previous editor's and reviewers' comments with the submitted manuscript, along with the authors' responses to those comments. Submitting previous evaluatory review of another journal accelerates the review process.
- g- For accepted manuscripts, the authors are requested to fill and sign the journal's cover letter to express their consent for its publication.
- h- To reproduce published material, to use illustrations or tables or report information about identifiable people, the author should submit a copy of the permission with the manuscript to the journal.
- 2.Top Ethic Committee Approval
- Inclusion of the approval letter from the relevant Ethics Committee or Institution's Review Board regarding the research protocol and the rights of the subjects (if applicable to the study)
- 3.Top Consent Form
- Attach a copy of the consent form to the letter, if applicable. Consent forms would be evaluated by the Ethics Committee and then signed by the participant.
- 4.Top RCT or NCT Registration
- Emailing the letter denoting registration of RCTs or NCTs in domestic or international databases (The trial's registration number needs to be mentioned, too).
- 5. Manuscripts submitted in English, must be type written, double-spaced, on good quality A4 paper, or paper of similar format. Authors are requested to reserve margins of at least 2.5cm all around the paper. Original drawings of photos, tables and figures should be furnished together with the manuscripts.
- 6. Manuscripts should be kept to a minimum length and should be subdivided into labeled sections (Title page, Abstract, Keywords, Introduction, Materials and Methods, Results, Discussion, Conclusion, Acknowledgement, and References).
- 7. A title page is to be provided and should include the title of the article, authors' names with full first name (with degrees), authors' affiliation, suggested running title and corresponding author. The affiliation should comprise the department, institution (usually university or company), city and state (or nation). The suggested running title should be less than 50 characters (including spaces) and should comprise the article title or an abbreviated version thereof. For office purposes, the title page should include the name and complete mailing address, telephone and fax number, and email of the one author designated to review proofs.
- 8. An abstract no longer than 250 words for reviews and research articles is to be provided as the second page. Abstract should be structured as objective(s) (including purpose setting), materials and methods, results, and conclusion..

Instruction for Authors

- 9. A list of 3-8 keywords, chosen from the Medical Subject Headings (MeSH) list <http://www.nlm.nih.gov/mesh/MBrowser.html>, is to be provided directly below the abstract. Keywords should express the precise content of the manuscript, as they are used for indexing purposes. Provide abbreviations and nomenclature list in an alphabetical order and non-standard abbreviations contained in the manuscript (excluding references) with definitions after the keywords. Use abbreviations sparingly and only when necessary to save space, and to avoid repeating long chemical names or therapeutic regimes. In a figure or table, define the abbreviations used in a footnote.
- 10. Tables in limited numbers should be self-explanatory, clearly arranged, and supplemental to the text. The captions should be placed above.
- 11. Figures should be utilized only if they augment understandability of the text. The captions should be placed below. Drawings and graphs should be professionally prepared in deep black and submitted as glossy, black and white clean Photostats. Professionally designed computer generated graphs with a minimum of 300 DPI laser printer output is preferable. Color photographs are welcomed.
- 12. The same data should not be presented in tables, figures and text, simultaneously.
- 13. MSD uses Vancouver referencing Style. References in limited numbers and up-to-date must be numbered consecutively in order of citation in the text (number in parentheses). Periodical titles should be abbreviated according to the PubMed Journals Database (<http://www.ncbi.nlm.nih.gov/entrez/query.fcgi?db=journals>). Print surnames and initials of all authors when there are six or less. In the case of seven or more authors, the names of the first six authors followed by et al. should be listed.
- Please check all references with EndNote referencing System. Please check out and Download Vancouver Endnote Style.
- **Type of Articles**
- Type of articles are based on PubMed definitions. For more info please refer to: <http://dtd.nlm.nih.gov/publishing/tag-library/3.0/n-w2d0.html>
- **Editorial :**
- Editorial is Opinion piece, policy statement, or general commentary, typically written by staff of the publication (The similar value "article-commentary" is reserved for a commentary on a specific article or articles, which is written by an author with a contrasting position, not an editor or other publication staff.)
- **Letters to the Editor about a recent journal article :**
- Letters referring to a recent article in this journal must be received within three months of its publication. For example, a letter referring to an article published in the January issue must be submitted online no later than March 31st. Letters submitted after the allowed time will not be considered.
- The text, not including references, must not exceed 700 words. A maximum of three authors and 10 references are allowed. Neither tables nor figures are allowed.
- Letters to the Editor NOT referring to a recent journal article :
- Original research that is of interest but does not fulfill all the requirements needed for publication as a full-length manuscript can be submitted as a letter to the editor. The letter must have a title and a maximum of three authors.
- The text, not including references, tables, figures or legends must not exceed 700 words. No more than 10 references and either one table or one figure are allowed.
- Word Count Limit: Letters should contain 500 - 700 words, maximum number of references is 10, maximum Number of illustrations/Tables is 1.
- **Original Article:**
- The content of the paper must justify its length. For reports of original investigative work, traditional division into sections is required: Title, Keywords, Addresses and which author address for correspondence, Structured abstract, Background, Objectives, Materials/Patients and Methods, Results, Discussion, References and Acknowledgements, Legends for display items (Figures and Tables).
- Original Research articles should contain 2500 - 3500 words, maximum number of references is 35, maximum Number of illustrations/Tables is 5.
- **Review Article :**
- Review Articles should contain 3500 - 4000 words, maximum number of references is 50, maximum number of illustrations/Tables is 5. In a review article both abstract and text of the manuscript, include following items:
- 1) Context: Include 1 or 2 sentences describing the clinical question or issue and its importance in clinical practice or public health.
- 2) Evidence Acquisition: Describe the data sources used, including the search strategies, years searched, and other sources of material, such as subsequent reference searches of retrieved articles. Explain the methods used for quality assessment and the inclusion of identified articles.
- 3) Results: Address the major findings of the review of the clinical issue or topic in an evidence-based, objective, and balanced fashion, emphasizing the highest-quality evidence available.
- 4) Conclusions: Clearly state the conclusions to answer the questions posed if applicable, basing the conclusions on available evidence, and emphasize how clinicians should apply current knowledge.

Instruction for Authors

- **Case Report**
- A case report is a case study, case report, or other description of a case that should contain 1500 - 2000 words with a structured abstract of 200 words maximum. Case reports should comprise sections of Introduction, Case Presentation, and Conclusions in Abstract and Introduction, Case Presentation, and Discussion in full text with not more than 2 tables or figures and up to 20 references.
- **Brief Report**
- Brief Reports should contain 1000 - 2000 words with a structured abstract of 200 words maximum. Short reports should comprise sections of Background, Objectives, Materials & Methods, Results and Discussion with not more than 2 tables or figures and up to 20 references.
- **Short Communication**
- Short Communication, follow the instructions for original articles, except that the total word number of the main text (excluding references, tables and figure legends) is limited to 2000 with no more than 2 figures and/or tables and no more than 15 references. An abstract, not exceeding 150 words, should be presented at the beginning of the article.
- **News**
- News should contain 1000 - 2000 words with a structured abstract of 200 words maximum. News should comprise sections of Background, Objectives, Materials & Methods, Results and Discussion with not more than 2 tables or figures and up to 20 references.
- **Publication Policies**
- Manuscripts, or the essence of their content, must be previously unpublished and should not be under simultaneous consideration by another Journal. The authors should also declare if any similar work has been submitted to or published by another Journal. By virtue of the submitted manuscript, the corresponding author acknowledges that all the co-authors have seen and approved the final version of the manuscript. The corresponding author should provide all co-authors with information regarding the manuscript, and obtain their approval before submitting any revisions. Manuscripts are only accepted for publication on the understanding that the authors will permit editorial amendments, though proofs will always be submitted to the corresponding author before being sent finally to press. Prior to the initial submission of a new manuscript, please carefully consider that all authors' names are included as no change to authors' details will be permitted after the acceptance. The decision to accept a contribution rests with the Editorial Board of the MSD.
- Manuscripts will be considered for publication in the form of original articles, Case report, short communications, Letter to editor and review articles. The work should be original or a thorough by an authoritative person in a pertinent field.
- **Peer review process**
- All submissions will be reviewed anonymously by at least two independent referees. All manuscripts will be acknowledged upon presenting to the Journal office, provided that all stated requirements are met. Authors are encouraged to suggest names of three expert reviewers, but selection remains a prerogative of the Editor. The whole review process depends on receiving referees comments and revising the manuscripts based on these comments to the author. On receipt of the revised article from the author, and after final approving by referees, the letter of acceptance is issued to the author. Authors have the right to communicate to the editor if they do not wish their manuscript to be reviewed by a particular reviewer because of potential conflicts of interest. No article is rejected unless negative comments are received from at least two reviewers. **MSD employs double blind reviewing process, where both the referee and author remain anonymous throughout the process.**



Instruction for Authors

- **Ethical Rules and Rights**
- **Conflicts of interest**
- Conflicts of interest arise when authors, reviewers, or editors have interests that are not fully apparent and that may influence their judgments on what is published. They have been described as those which, when revealed later, would make a reasonable reader feel misled or deceived. (The Committee on Publication Ethics (COPE) states in its Guidelines on Good Publication Practice 2003).
- Authors should disclose, at the time of submission, information on financial conflicts of interest or other interests that may influence the manuscript. Authors should declare sources of funding for the work undertaken.
- **Authors Responsibilities**
- 1. Authors must certify that their manuscript is their original work.
- 2. Authors must certify that the manuscript has not previously been published elsewhere, or even submitted and been in reviewed in another journal.
- 3. Authors must participate in the peer review process and follow the comments.
- 4. Authors are obliged to provide retractions or corrections of mistakes.
- 5. All Authors mentioned in the paper must have significantly contributed to the research. Level of their contribution also must be defined in the Authors Contributions section of the article.
- 6. Authors must state that all data in the paper are real and authentic.
- 7. Authors must notify the Editors of any conflicts of interest.
- 8. Authors must identify all sources used in the creation of their manuscript.
- 9. Authors must report any errors they discover in their published paper to the Editors.
- 10. Authors must not use irrelevant sources that may help other researches/journals.
- 11. Authors cannot withdraw their articles within the review process or after submission, or they must pay the penalty defined by the publisher.
- **Editorial Responsibilities**
- 1. Editors (Associate Editors or Editor in Chief) have complete responsibility and authority to reject/accept an article.
- 2. Editors are responsible for the contents and overall quality of the publication.
- 3. Editors should always consider the needs of the authors and the readers when attempting to improve the publication.
- 4. Editors should guarantee the quality of the papers and the integrity of the academic record.
- 5. Editors should publish errata pages or make corrections when needed.
- 6. Editors should have a clear picture of a researchs funding sources.
- 7. Editors should base their decisions solely one the papers importance, originality, clarity and relevance to publications scope.
- 8. Editors should not reverse their decisions nor overturn the ones of previous editors without serious reason.
- 9. Editors should preserve the anonymity of reviewers (in half blind peer review journals).
- 10. Editors should ensure that all research material they publish conforms to international accepted ethical guidelines.
- 11. Editors should only accept a paper when reasonably certain.
- 12. Editors should act if they suspect misconduct, whether a paper is published or unpublished, and make all reasonable attempts to persist in obtaining a resolution to the problem.
- 13. Editors should not reject papers based on suspicions; they should have proof of misconduct.
- 14. Editors should not allow any conflicts of interest between staff, authors, reviewers and board members.
- 15. Editors must not change their decision after submitting a decision (especially after reject or accept) unless they have a serious reason.
- **The Journal's Policy on Plagiarism**
- Any practice of plagiarism will not be tolerated by the journal regarding submitted manuscripts. Non-identifiable quoted segments of articles or close paraphrases from other author/s or even submitting the author's previously published work are known as the act of plagiarism by this journal unless proper use of quotations or paraphrasing with decent citation or referencing are in place. Heavy use of one or a couple of articles is discouraged, even if paraphrased fully. Advertent practice of plagiarism will abort reviewing process or later submission to this journal. All submitted articles will evaluate by iThenticate software belonged to cross check for stop any plagiarism and improve publication quality.

Instruction for Authors

- **The Journal's Policy on Plagiarism**
- Any practice of plagiarism will not be tolerated by the journal regarding submitted manuscripts. Non-identifiable quoted segments of articles or close paraphrases from other author/s or even submitting the author's previously published work are known as the act of plagiarism by this journal unless proper use of quotations or paraphrasing with decent citation or referencing are in place. Heavy use of one or a couple of articles is discouraged, even if paraphrased fully. Advertent practice of plagiarism will abort reviewing process or later submission to this journal. All submitted articles will evaluate by iThenticate software belonged to cross check for stop any plagiarism and improve publication quality.
- **Statement of Human and Animal Rights**
- All submitted articles involving human experiments should be performed only in accordance with the ethical standards provided by the responsible committee of the institution and in accordance with the Declaration of Helsinki (as revised in Edinburgh 2000), available at <http://www.wma.net/en/30publications/10policies/b3/index.html>. Papers describing animal experiments can be accepted for publication only if the experiment conforms the National Institute of Health Guide (National Institute of Health Publications No. 80-23, Revised 1978) for the care and use of Laboratory Animals for experimental procedure. Authors must provide a full description of their anesthetics and surgical procedures. All manuscripts reporting the results of experimental investigations involving human subjects should include a statement confirming the informed consent was obtained from each subject or subject's guardian.
- **Humans:** When reporting experiments on human subjects, authors should indicate whether the procedures followed were in accordance with the ethical standards of the responsible committee on human experimentation (institutional and national) and with the Helsinki Declaration of 1975, as revised in 2008 (5). If doubt exists whether the research was conducted in accordance with the Helsinki Declaration, the authors must explain the rationale for their approach and demonstrate that the institutional review body explicitly approved the doubtful aspects of the study.
- **Animals:** When reporting experiments on animals, authors should indicate whether the institutional and national guide for the care and use of laboratory animals was followed.
- All animal or human subjects should be used after approval of the experimental protocol by a local ethics committee.
- **Acknowledgements**
- **Contributors:** In acknowledgement section, name people for their contributions or their permission to reproduce their published material, to use their illustrations or provide information about them- try to fully name people who have helped from the conception of the idea to adoption of the hypothesis, to finalization of the study, etc., earnestly. Statement of financial support: Aside from the title page, state any financial or other relationships that might lead to a conflict of interest.
- **Copyright**
- After acceptance and publication; Medical Science and discovery allows to the author's to hold the copyright without any restriction. Please complete copyright form and send via email to editor. Download MSD Copyright Transfer and Author Consent Form
- **Creative Commons License**
- This work is licensed under a Creative Commons Attribution-NonCommercial 4.0 International License.(CC BY NC).
- **Copyright 2019:** The Author(s); This is an open-access article distributed under the terms of the Creative Commons Attribution License (<http://creativecommons.org/licenses/by/4.0>), which permits unrestricted use, distribution, and reproduction in any medium, provided the original work is properly cited. All Rights reserved by international journal of Medical Science and Discovery.
- **Disposal of material**
- Once published, all draft copies of the manuscript, correspondence and artwork will be held at least for 6 months before disposal. Authors and Readers may find original PDF file of article on backup servers such as LOCKSS (<https://www.lockss.org/>)
- **Digital Object Identifier DOI**
- Once a manuscript is accepted for publication it will be provided with a registered DOI number following the acceptance decision. Manuscripts accepted for publication by the MSD will be published as ahead of print articles prior to the printing date of their scheduled issue. Corresponding author will be provided with a PDF Proof by the publisher once the production process of an accepted manuscript is over.

Instruction for Authors

- **Article Processing Charge** is free
- MSD Article Submission Fee: Free
- MSD Fast Evaluation Process Fee: Free
- MSD Article Evaluation Fee: Free

- Lycia Press Proofreading Service Fee: Design and preparation of PDFs, Language editing, Graphical design Services of international Journal of Medical Science and Discovery has been contracted with Lycia Press LONDON, UK (as Publisher <https://lycians.com>), by the MSD Board of Directors. Proof Reading Service Fee depends on your manuscript. Please get contact with lycia press language office for your manuscripts proofreading cost info office@lycians.com

- **MSD revenue sources and Sponsorships**
- All costs arising from the publications are covered by the Sponsor Companies. Sponsorship request evaluates by the MSD Journal Management Board, Lycia Press and the sponsor company logos will be included on the back page of printed magazine and in the sponsor section of journal website

- **References**
- Committee on Publication Ethics (COPE). (2011, March 7). Code of Conduct and Best-Practice Guidelines for Journal Editors. Retrieved from http://publicationethics.org/files/Code_of_conduct_for_journal_editors_Mar11.pdf
- World Association of Medical Editors (WAME). Principles of Transparency and Best Practice in Scholarly Publishing. <http://www.wame.org/about/principles-of-transparency-and-best-practice>

Contents

Research Article

Could sP-Selectin and sICAM-1 be potential biomarkers in status epilepticus? / Pages: 32-40

Murat Mert Atmaca, Aysegul Telci, Ahmet Dirican, Candan Gurses

Effect and reliability of Transcranial Magnetic Stimulation on neuropathic pain, depressive symptoms in stroke patients: Preliminary Study / Pages: 41-45

Türkan Turgay, Mazlum Serdar Akaltun, Neytullah Turan, Şengül Kocamer Şahin, Özlem Altındağ

Fine needle aspiration cytology (FNAC) of cystic soft tissue lesions and end tissue metamorphosis-a three year study / Pages: 46-53

Ragini Thapa, Rajveer Singh Beniwal, Prosenjit Ganguly

The relationship between illness perception and quality of life in thyroid patients who received radioactive iodine-131 ablation treatment / Pages: 54-58

Güzide Akyıldız, Gülçin Elboğa, Umut Elboğa, Ertan Şahin

Application of circular statistics to life science data / Pages: 63-72

Yıldırım Demir, Ömer Cevdet Bilgin

Case Report

A case of primary malignant melanoma of the larynx / Pages: 59-62

Dr. Özge Kaya, Dudu Solakoğlu Kahraman, Gülден Diniz, Gönül Demir

Could sP-Selectin and sICAM-1 be potential biomarkers in status epilepticus?

Murat Mert Atmaca^{1*}, Aysegul Telci², Ahmet Dirican³, Candan Gurses¹

Abstract

Objective: To investigate whether soluble P-selectin (sP-selectin) and soluble intercellular adhesion molecule-1 (sICAM-1) might be potential biomarkers that predict the course and prognosis of status epilepticus (SE).

Patients and Methods: Forty-two adult patients with SE between February 2012 and December 2013 were included in the study. Clinical and demographic features of the patients were recorded and surviving patients were followed for 13.6 ± 4.6 months. Serum sICAM-1 and sP-selectin levels were measured during SE or within 24 hours of SE, and compared with 28 subjects in the control group.

Results: Levels of serum sP-selectin and sICAM-1 were higher in the SE group compared with the control group (P: 0.04 and P: 0.02, respectively). It was shown that higher levels of serum sICAM-1 correlated with poor outcomes (P: 0.017) and “ROC curve” analysis showed that levels higher than 457 ng/mL predicted poor outcomes with 71% sensitivity and 68% specificity. Levels of serum sP-selectin did not correlate with outcomes. Subgroup analyses revealed levels of serum sICAM-1 were significantly higher in the epilepsy partialis continua (EPC) group compared with the control group (P: 0.012) and levels of serum sP-selectin were not different between subgroups and controls. Levels of serum sP-selectin and sICAM-1 didn't differ between subgroups of SE and different etiologies.

Conclusion: Higher levels of serum sICAM-1 may predict poor outcome in SE, as a result sICAM-1 may be used as a biomarker of the prognosis of SE in clinical practice. The production of sICAM-1 may increase particularly in EPC. However, no correlation was found between etiology of SE and serum level of sICAM-1, even in patients with EPC. Serum level of sP-Selectin is not an appropriate biomarker for the prognosis of SE. Serum levels of sICAM-1 and sP-selectin are not appropriate biomarkers of refractory SE.

Keywords: status epilepticus, biomarker, sP-selectin, sICAM-1

Introduction

Biomarkers of epileptogenesis and ictogenesis may exist and in turn, these might be used to predict the onset of epileptic episodes and determine the presence and possible extent of tissue that may predispose to spontaneous episodes. These biomarkers also have the potential to be used to evaluate prognosis once the clinical episode has settled and to create animal models for more cost-effective screening of potential antiepileptogenic and antiseizure drugs and devices, and reduce costs in potential antiepileptogenic and antiseizure clinical studies by enriching the study population with patients at high risk for epilepsy. Biomarkers of epilepsy might be found via imaging modalities, electrophysiologic measurements, and molecules measured in tissue, blood, or cerebrospinal fluid (CSF) (1).

Brain injury that results from status epilepticus (SE) is mainly due to the excitotoxic damage caused directly by seizures (2). Biomarkers of brain injury would be useful in determining critical seizure duration in terms of detecting neuronal injury and defining epilepsy subtypes that may require more aggressive treatment, thus serving as prognostic markers. Several biomarkers have been correlated to epilepsy and brain injury. Brain-derived neurotrophic factor (BDNF), (3) myelin basic protein (MBP), (4) and glial fibrillary acidic protein (GFAP), (4, 5) neurofilament heavy chain protein and heat shock protein (HSP-70) (6) as well as various enzymes (enolase, aldolase, pyruvate kinase, lactate dehydrogenase, creatine phosphokinase), (7) metalloproteases, (8) tau protein, (9) neuron-specific enolase (NSE) (10) and S100B protein (11) in particular, have been investigated.

Received 30-12-2018 Accepted 06-03-2019 Available Online 08-03-2019 Published 30-03-2019

1 Istanbul University, Istanbul Faculty of Medicine, Dept of Neurology, TR

2 Istanbul University, Istanbul Faculty of Medicine, Dept of Biochemistry, TR

3 Istanbul University, Istanbul Faculty of Medicine, Dept of Biostatistics and Medical Informations, TR

* Corresponding Author: Murat Mert Atmaca E-mail: drmuratmertatmaca@hotmail.com Phone: +90 (533) 276 48 68



It has recently been demonstrated that modification of astroglial function, immune/inflammatory reactions, and impairment of blood brain barrier also contribute to brain injury resulting from seizures (12-14).

Cellular adhesion molecules are known to play important roles in inflammatory pathologies (15-17) particularly including the pathogenesis of atherosclerosis (18) and several neurologic diseases such as ischemic stroke, multiple sclerosis, and Alzheimer's disease (19) by mediating the migration of immune cells into the inflamed tissue. Adhesion molecules on endothelial cells and immune cells are termed soluble cellular adhesion molecules when shed into the circulation, and might be determined using an enzyme-linked immunosorbent assay (ELISA) (20).

Animal studies have demonstrated that seizures cause an inflammatory wave, which results in the increased synthesis of adhesion molecules, (12, 21, 22) and increased soluble intercellular adhesion molecule-1 (sICAM-1) synthesis via intraventricular injection of kainic acid (23). Furthermore, administration of monoclonal antibodies aimed at adhesion molecules following pilocarpine-induced seizures has provided a marked reduction in seizures (22). However, few human studies have investigated the relationship between seizures and adhesion molecules (24-27).

The objective of this study was to compare levels of sP-selectin and sICAM-1 in patients with SE and healthy controls to determine whether these could be potential biomarkers that predict the course and prognosis of SE.

Material and Methods

1 Patients and Clinical Data

Forty-two adult patients who were diagnosed as having SE following referral to the Emergency unit of the Neurology Department or during their hospitalization in other clinics of Istanbul Medical Faculty of Istanbul University between February 2012 and December 2013 were included in the study, and their demographic and clinical features in addition to early and late prognosis were recorded prospectively. At first there were 50 patients, but 8 patients who had cerebrovascular disease were excluded because serum levels of adhesion molecules are known to be affected by atherosclerotic risk factors (28). More patients would be expected to be included in such a study but written informed consents could only be obtained for 50 patients from them or their close relatives when the patients were in SE. The study was approved by the Ethics Committee of Istanbul Medical Faculty of Istanbul University prior to the performance of any study procedures. All patients and volunteering controls were informed about the study outline and examinations, and written informed consent was obtained from all participants or their relatives if they were unconsciousness due to SE.

2 Blood Samplings

Blood samples were drawn from all subjects in the study and control groups during or within 24 hours of SE, and centrifuged for 10 minutes at 3000 revolutions per minute

to obtain serum. Serum samples were then stored at -80°C until required for analysis. Levels of sP-selectin and sICAM-1 were measured in the serum samples using the commercial ELISA kits (Bender MedSystems, Vienna, Austria) at the Central Biochemistry Laboratory of the Department of Biochemistry of Istanbul Medical Faculty of Istanbul University.

Levels of sP-selectin were measured in 42 patients with SE and 26 controls, and sICAM-1 levels were measured in 40 patients with SE and 28 controls. The discrepancy between the number of patients and control samples was due to a lack of serum samples. The control group consisted of age- and sex-matched healthy volunteers who worked in our hospital or relatives of patients who were hospitalized. Control population did not have any inflammatory or infectious disease, neoplasms, hypertension, diabetes mellitus, chronic hepatic and renal dysfunction, cerebrovascular disease which may alter serum levels of soluble adhesion molecules.

3 Seizure Types

Generalized convulsive status epilepticus (GCSE) was defined as one seizure or two seizures, without attainment of consciousness in-between, lasting longer than 5 minutes (29). The diagnosis of epilepsy partialis continua (EPC) was established by the observation of a seizure with contractions involving only focal parts of the body and lasting at least 30 minutes; consciousness is often preserved although various degrees of altered consciousness might be observed (30). The diagnosis of non-convulsive SE (NCSE) was established through an electroencephalogram (EEG) (31). Refractory SE (RSE) was defined as SE refractory to treatment with first-line benzodiazepines (BZD) and any of the second-line antiepileptic drugs (AED) including phenytoin (PHT), valproic acid (VPA), levetiracetam (LEV), and phenobarbital (PB) (32).

4 Treatment

Patients with GCSE were initially treated with intravenous (i.v.) 10 mg diazepam (Diazepam®; 10 mg given over 2-5 min). If seizures continued, another 10 mg diazepam was administered and followed by either one or two of i.v. LEV (Keppra®; 20-60 mg/kg given over 10 min), PHT (Eptoin®, Epanutin®; 15-20 mg/kg given at a rate of 50 mg/min), or VPA (Depakin®; 20-40 mg/kg given over 10 min). Refractory GCSE was treated by anaesthetic doses of barbiturates (Pentothal Sodium® (thiopental); 2-3 mg/kg bolus followed by 3-5 mg/kg/h infusion), midazolam (Dormicum®; 0.2 mg/kg bolus followed by 0.1-0.4 mg/kg/h infusion) or propofol (Propofol®, Pofol®; 3-5 mg/kg bolus followed by 5-10 mg/kg/h infusion); the anaesthetics were titrated against an electroencephalogram burst suppression pattern for at least 24 h. Patients with NCSE and EPC were initially treated in same manner as patients with GCSE. But if they became refractory, further non-anaesthetising i.v. substances such LEV, PHT or VPA were administered instead of anaesthetics. In patients with medical co-morbidities and multiple drugs usage, we preferred LEV instead of PHT and VPA. Brand names of the drugs used in Turkey were given with their doses in brackets.

5 Prognosis

Prognosis was determined in two ways: 1) Early poor prognosis was defined as death or neurologic sequelae due to SE within 30 days of SE as in several previous studies, and 2) Late poor prognosis was defined as death or neurologic sequelae due to SE in the late period (at the end of 13.6 ± 4.6 months of follow-up). All other conditions except death and neurologic sequelae were defined as good prognosis.

6 Statistical Analysis

The study data was analyzed using the Statistical Package for Social Sciences (SPSS) version 18, and a P value of <0.05 was considered statistically significant. Parametric (independent samples t-test and one-way ANOVA) and non-parametric tests (Mann-Whitney and Kruskal-Wallis tests) were used to compare serum levels of biomarkers in the study and control groups, and to determine their relationship with the prognosis, etiology and refractoriness of SE. Bonferroni and Dunnett were used for post hoc analysis in ANOVA. "ROC curve" was used to determine a cut-off value for sICAM-1 levels to predict poor outcomes.

When power analysis was done with 26 patients and 26 controls, the value was 0.85. We had 42 patients and 28 controls in this study.

Results

Forty-two patients were diagnosed as having SE; 19 were males (45.2%) and 23 were females (54.8%) and their ages ranged between 17 and 90 years (mean: 50.5 ± 18.9 years). Classification of patients based upon the SE subtype revealed GCSE in 25 patients (59.5%), EPC in 10 patients (23.8%), and NCSE in 7 patients (16.7%). Eleven patients (26.2%) were diagnosed as having RSE. Early prognosis was good in 31 (73.8%) and poor in 11 (26.2%) patients, and late prognosis was good in 20 (47.6%) and poor in 22 (52.4%) patients. One patient with NCSE and another patient with GCSE developed neurologic sequela directly related with SE. All other patients with poor outcomes died of underlying etiologies and their complications.

Detailed analysis of etiologic factors established that the underlying cause of SE was tumors in 9 patients (21.4%); infectious/metabolic/toxic causes in 10 (23.8%), including 3 patients with encephalitis (7.1%); discontinuation of anti-epileptic drugs in 4 (9.5%); genetic causes in 3 (7.1%); sequelae (operated tumors, head trauma) in 3 (7.1%) patients. The less common etiologic factors were as follows: Multiple sclerosis, anoxia, hippocampal sclerosis, neuronal migration abnormality and cerebral hemorrhage due to leukemia and thrombocytopenia in 1 patient (2.4%) for each. The etiologic factor could not be determined in 8 patients (19%). The demographics, clinical features and etiologies of the patients are presented in Table 1.

Levels of serum sP-selectin and sICAM-1 were compared between the SE and control groups, in subgroups of SE (GCSE, NCSE and EPC) and the control group and only in subgroups of SE. Also levels of these molecules were compared in different etiologies. There were 28 subjects in the control group, which consisted of 12 men (42.8%) and

16 women (57.2%) with a mean age of 43 ± 13.5 years. The control and study groups were sex-matched. The mean age of the control group was lower than the study group without a statistically significant difference ($P: 0.075$).

Levels of serum sP-selectin and sICAM-1 were higher in the SE group compared with the control group with P values of 0.04 and 0.02, respectively (Table 2). It was shown that higher levels of serum sICAM-1 correlated with late poor prognosis, and "ROC curve" analysis showed that levels higher than 457 ng/ml predicted poor outcome with 71% sensitivity and 68% specificity. The area under the curve was 0.721 and P value was 0.017 (Figure 1). Also, high serum levels of sICAM-1 slightly correlated with early poor prognosis ($P: 0.047$). There was no correlation between levels of sICAM-1 and refractoriness of SE. No correlation was established between levels of sP-selectin and the prognosis or refractoriness of SE (Table 3).

Subgroup analyses revealed levels of serum sICAM-1 were significantly higher in EPC group compared with the control group ($P: 0.012$). In subgroup analyses, other comparisons for sICAM-1 (GCSE vs control, and NCSE vs control) and all comparisons for sP-selectin (GCSE vs control, NCSE vs control and EPC vs control) revealed no differences. No correlation was established between levels of sICAM-1 with the prognosis and refractoriness of SE in the EPC group, but levels of sICAM-1 were higher in patients whose SE lasted more than 6 hours ($n=5$) compared with those whose SE lasted less than 6 hours ($n=5$) ($P: 0.011$). Minimum SE duration was 90 minutes and maximum was 2 months in patients with EPC. Serum levels of sP-selectin and sICAM-1 in the SE subgroups and controls are presented in Table 4. Bonferroni and Dunnett tests for post hoc analysis in ANOVA for multiple comparisons of sICAM-1 are shown in table 5.

We could not find relationship between poor outcome in the short and long period and refractoriness (P values were 0.1 and 0.3, respectively). Comparisons of sICAM-1 and sP-selectin according to SE groups (GCSE, NCSE and EPC) revealed no differences. The etiologies of the patients were very heterogeneous in this study and we categorized the etiologies to better distinguish those patients with poor outcome where biomarkers gave some clues. First, we made two groups: 1- Patients with brain tumors ($n=9$) 2- Others ($n=33$). There was no difference between groups in terms of sICAM-1 and sP-selectin levels ($p: 0.76$ and 0.37 , respectively) in Mann-Whitney Test. Also there was no difference between patients with brain tumors+poor outcome ($n=6$) and patients with other etiologies+poor outcome ($n=16$) in terms of sICAM-1 and sP-selectin levels ($p: 0.23$ and 1 , respectively) in Mann-Whitney Test. Second, we made 5 groups: 1-Brain tumors ($n=9$), 2- Infections ($n=5$) (CNS or systemic), 3-Metabolic-toxic causes ($n=5$), 4- Unknown cause ($n=11$) (We included patients with genetic etiology to this group), 5- Other causes ($n=12$) (MS, hippocampal sclerosis, bleeding due to thrombocytopenia, double cortex, sequela of trauma, anoxia and operated epidermoid cyst in brain and AED discontinuation (These 4 patients were using AEDs due to prior meningitis, stroke, lesions that were not clear whether they were tumors or caused by candida and possible

autoimmune encephalitis)). There was no difference between groups in terms of sICAM-1 and sP-selectin levels (p: 0.63 and 0.92, respectively) in Kruskal-Wallis Analysis. Also there was no difference between patients with brain tumors+poor outcome (n=5), infections+poor outcome (n=4), metabolic-toxic causes+poor outcome (n=4), unknown cause+poor outcome (n=5), other causes+poor outcome (n=3) in terms of sICAM-1 and sP-selectin levels (p: 0.49 and 0.86, respectively) in Kruskal-Wallis Analysis.

It was previously shown that serum levels of adhesion molecules were not age dependent in the 18-65 years age range (28) but there is no data for people aged more than 65 years in the literature.

Therefore, we compared the levels of serum sP-selectin and sICAM-1 between patients aged more than 65 years (n=11) and those aged less than 65 years. There was no statistical important difference between groups for sICAM-1 (P: 0.56) and sP-selectin (P: 0.27).

Table 1: Demographics, clinical features and etiologies of the patients

Demographics

Males (n=19, 45.2%)

Females (n=23, 54.8%)

Mean age: 50.5± 18.9 years

SE types

GCSE (n=25, 59.5%)

EPC (n=10, 23.8%)

NCSE (n=7, 16.7%)

Refractory SE (n=11, 26.2%)

Early prognosis

Good (n=31, 73.8%)

Poor (n=11, 26.2%)

Late prognosis

Good (n=20, 47.6%)

Poor (n=22, 52.4%)

Etiologies (n=42)

Tumors (n=9, 21.4%)

CNS infection (n=3, 7.1%)

Systemic infection (n=2, 4.8%)

Metabolic-toxic (n=4, 9.5%)

Metabolic disorder and infection (n=1, 2.4%)

Multiple sclerosis (n=1, 2.4%)

Sequelae (operated tumors, head trauma) (n=3, 7.1%)

Genetic (n=3, 7.1%)

Unknown (n=8, 19%)

Anoxia (n=1, 2.4%)

Cerebral hemorrhage due to leukemia and thrombocytopenia (n=1, 2.4%)

Discontinuation of AED (n=4, 9.5%)

Neuronal migration abnormality (n=1, 2.4%)

HS (n=1, 2.4%)

CNS: Central nervous system, AED: Antiepileptic drug, HS: Hippocampal sclerosis, SE: Status epilepticus, GCSE: Generalized convulsive status epilepticus, EPC: Epilepsia partialis continua, NCSE: Non-convulsive status epilepticus

Table 2: Levels of serum sP-selectin and sICAM-1 in SE and control groups and P values.

	SE	Control	P
sICAM-1 (ng/ml)	479.1 ± 168.9 (N=40)	392.4 ± 109.1 (N=28)	0.020
sP-selectin (ng/ml)	163.8 ± 63.8 (N=42)	133.4 ± 47.7 (N=26)	0.040

Table 3: Levels of serum sP-selectin and sICAM-1 in SE group according to early and late prognosis and refractoriness and their P values.

	Early good prognosis	Early poor prognosis	p
sICAM-1 (ng/ml)	448.7 ± 154.5	570.6 ± 185.2	0.047
sP-selectin (ng/ml)	158.4 ± 60.8	179.2 ± 72.5	0.360
	Late good prognosis	Late poor prognosis	p
sICAM-1 (ng/ml)	410 ± 139	542 ± 172.1	0.017
sP-selectin (ng/ml)	159.6 ± 53.5	167.7 ± 73	0.685
	Non-refractory SE	Refractory SE	p
sICAM-1 (ng/ml)	469.6 ± 160.3	507.7 ± 198.9	0.544
sP-selectin (ng/ml)	162.4 ± 66.4	167.7 ± 58.6	0.816

Table 4: In the table, median, minimum and maximum values (on the first line); mean and standard deviation values (on the second line) of serum levels of molecules are shown. The superscripts a, b, c and d show the subgroups EPC, JCSE, NCSE and controls respectively with the asterisks notation *: P < 0.05 show the significance level of the multiple comparisons of posthoc tests.

Molecules	EPC	GCSE	NCSE	Controls	ANOVA
sICAM-1 (ng/ml)	521.5 (229-931) 551.7 ± 214.5 ^(d*)	433 (217-706) 440.2 ± 147.6	487 (362-787) 503.6 ± 145.5	374 (217-627) 392.4 ± 109.1 ^(a*)	P<0.05
sP-selectin (ng/ml)	171 (70.4-230.1) 160.2 ± 49	172.7 (11.7-316.3) 168 ± 69	150.4 (87.7-290.1) 154.3 ± 70.8	137.2 (42.8-256.8) 133.3 ± 47.7	P: 0.212

Table 5: Bonferroni and Dunnett tests were used for post hoc analysis in ANOVA for multiple comparisons of sICAM-1.

Multiple Comparisons

Dependent Variable:sICAM-1

(I) Groups	(J) Groups	Mean Difference (I-J)	Std. Error	Sig.	95% Confidence Interval		
					Lower Bound	Upper Bound	
Bonferroni	JCSE	EPC	-111,526	54,845	,277	-260,85	37,80
		NCSE	-63,398	62,501	1,000	-233,57	106,78
		Healthy subjects	47,781	40,746	1,000	-63,16	158,72
	EPC	JCSE	111,526	54,845	,277	-37,80	260,85
		NCSE	48,129	71,354	1,000	-146,15	242,41
		Healthy subjects	159,307*	53,340	,024	14,08	304,54
	NCSE	JCSE	63,398	62,501	1,000	-106,78	233,57
		EPC	-48,129	71,354	1,000	-242,41	146,15
		Healthy subjects	111,179	61,185	,443	-55,41	277,77
	Healthy subjects	JCSE	-47,781	40,746	1,000	-158,72	63,16
		EPC	-159,307*	53,340	,024	-304,54	-14,08
		NCSE	-111,179	61,185	,443	-277,77	55,41
Dunnett t (2-sided) ^a	JCSE	Healthy subjects	47,781	40,746	,546	-51,45	147,01
	EPC	Healthy subjects	159,307*	53,340	,012	29,40	289,21
	NCSE	Healthy subjects	111,179	61,185	,195	-37,83	260,19

*. The mean difference is significant at the 0.05 level.

a. Dunnett t-tests treat one group as a control, and compare all other groups against it.

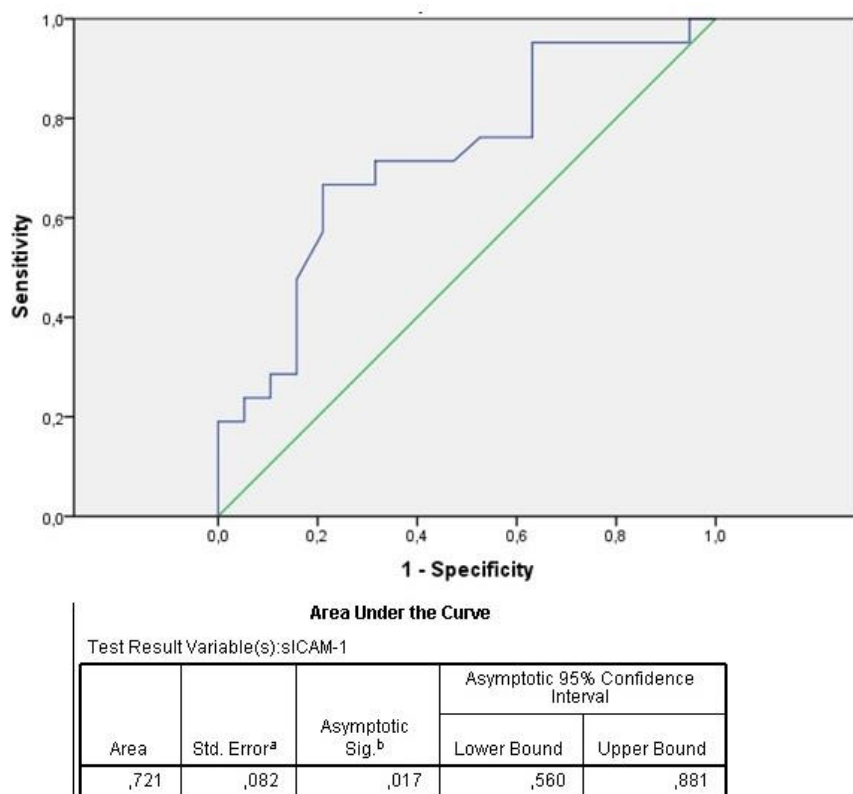


Figure 1: “ROC curve” analysis of serum levels of sICAM-1 predicting poor outcome in status epilepticus. AUC (area under the curve): 0.721, P: 0.017.

Discussion

Our study determined that serum levels of sICAM-1 were higher in the EPC group compared with the controls and higher serum levels of sICAM-1 predicted poor outcome in SE patients; therefore, we concluded that it could be used as a biomarker of SE in clinical practice. However, serum levels of sICAM-1 and sP-selectin did not change according to either SE types (comparisons in GCSE, NCSE and EPC groups, excluding controls) or etiology.

Refractoriness is expected to correlate with poor outcome. However, in our recently published study, which used univariate analyses, refractory SE was related with poor outcome in the short period ($p: 0.013$) but unrelated in the long period ($p: 0.114$) and also lost its significance in the short period when multivariate analyses were performed (33). In this study, we could not find any relationship between poor outcome in the short and long period and refractoriness. Six of our 7 patients with cryptogenic etiology had refractory SE which could cause less worse outcome in patients with refractory SE because patients with unknown etiology may have good outcomes although they have refractory SE. On the other hand, the small size of our patient group could have contributed to this result.

An extensive literature search highlighted the lack of studies that measured serum levels of sICAM-1 and sP-selectin in patients with SE. A human study compared tissue samples obtained from patients with hippocampal sclerosis (HS) during epilepsy surgery with brain tissue samples obtained from patients who died of non-neurologic

causes during autopsy. The authors demonstrated CD4 and CD8 positive lymphocytes and diffuse ICAM-1 staining in the hippocampal parenchyma in patients with HS but no lymphocytes and only a weak ICAM-1 staining in the control group (24). A recently published study reported that levels of serum sICAM-1, and serum and CSF sVCAM-1 were higher in patients with drug-resistant epilepsy compared with patients with drug-responsive epilepsy and patients with newly-diagnosed epilepsy, which suggested that these molecules could have an important role in drug-resistant epilepsy (27). Additionally, another study demonstrated that CSF levels of neuronal adhesion molecule-1 (NCAM-1) were lower in patients with drug-resistant epilepsy compared with patients who were drug-responsive, and in both patient groups compared with controls (25). It has also been established that serum levels of anti-inflammatory sICAM-5 were found lower in patients with drug resistant epilepsy (26). The relation between epilepsy and inflammation has been established in a study which indicates that a cascade of inflammatory process are initiated following an epileptogenic event at birth or later in life that contributes to the development of epilepsy and recurrent seizures (34). At a molecular level, seizures induce a series of inflammations in brain endothelial cells leading to an upregulation of IL-1 β and its receptor IL-1R1 (35), the complement system (36), and adhesion molecules (P-selectin, E-selectin, ICAM-1 and VCAM-1) (21, 22).

Another result obtained from this study was that serum level of sICAM-1 in particular increases in EPC, which suggests that sICAM-1 may play a role in the pathogenesis of EPC. Although inflammation is known to have an important role in the pathogenesis of the EPC subtype associated with Rasmussen encephalitis (37) which is also related with anti-GluR3 (38) antibodies, several pathologies of the motor strip might also cause EPC and there are no conclusive reports of the relationship between EPC and sICAM-1. EPC is a rare type of focal status epilepticus. Distinct pathologies can cause EPC such as inflammatory disorders 32%, neoplastic disorders 19%, head trauma 16%, vascular disorders 14%, others 3% and unknown 16% which were reported in a review (39). In our study, the following etiologies were observed in the 10 patients with EPC: tumors (n=5), central nervous system infection (n=1), systemic infection and metabolic disorders (n=2), and an etiology that could not be determined (n=2). Although we found increased sICAM-1 levels in the EPC group, we did not find a relationship between levels of sICAM-1 and different etiologies of EPC. This may be due to small number of patients. Also, the production of sICAM-1 may increase as a common pathway, regardless of etiology in EPC. On the other hand, levels of sICAM-1 were higher in patients with EPC whose SE lasted longer than 6 hours in our study which may suggest that production of sICAM-1 increases in time in EPC. No correlation was established between levels of sICAM-1 with the prognosis and refractoriness of SE in the EPC group but the sample size of this group was too small for these analyses and studies with larger number of patients are needed.

Our study had limitations, one was the small sample size, which did not allow for determination of an association between sICAM-1 and sP-selectin serum levels with SE etiology. Another problem was that these serum levels could only be measured once, thus repeat measurements were not taken to determine whether the levels returned to normal after the SE event. Also, measurements were not performed at the most appropriate time periods as 6, 12, or 24 hours after the start of SE. Obtaining these measurements during SE might lead to a false negative result. We did not check for atherosclerotic risk factors in patients, but we mostly excluded patients with atherosclerotic risk factors by excluding those in whom the etiology was cerebrovascular disease. One could also argue that a molecule that is affected by atherosclerotic risk factors is not a good choice for determining the prognosis of SE.

A recently-published study by Trinkka et al. (29) proposed 2 time points for SE. The first time point (t1) is the time beyond which the seizure should be regarded as “continuous seizure activity.” The second time point (t2) is the time of ongoing seizure activity after which there is a risk of long-term consequences including neuronal injury. In the case of convulsive SE, t1 at 5 min and t2 at 30 min was proposed, and t1 at 10 min and t2 at >60 min were suggested in cases of focal SE with impaired consciousness. Patients who had a generalized convulsive seizure longer than 5 minutes were diagnosed as having GCSE and were included in our study. Of the 44 patients

included, 37 had GCSE longer than 30 min, which is likely to cause neuronal injury according to Trinkka et al., but seven of our patients with GCSE had a seizure duration shorter than 30 minutes.

A study performed on rats demonstrated that vascular endothelial cells started ICAM-1 expression 6 hours after intraventricular injection of kainic acid, followed by vascular accumulation and migration of lymphocyte function-associated antigen-1 (LFA-1) positive leukocytes in the hippocampal region (23). Another study on mice revealed that both the production and leukocyte adhesion of ICAM-1, VCAM-1, E-selectin, and P-selectin were increased following pilocarpine-induced seizures or SE. Significant reduction in SE and spontaneous seizures were observed upon treatment of mice with monoclonal antibodies specific to these molecules and granulocyte-specific antibodies (22). A study on humans, as mentioned before, indicates that sVCAM-1 and sICAM-1 could play an important role in the drug-refractory epilepsy (27).

Conclusion

This is the first study conducted on human subjects to demonstrate the value of serum levels of sICAM-1 and sP-selectin in the prediction of the course and prognosis of status epilepticus (SE). Investigation of these biomarkers on higher number of patients and the determination of the connection between their high levels and outcome of the SE would give us the chance to choose more aggressive antiepileptic drug treatment and to reduce morbidity and mortality in patients with SE. The results of our study and animal studies suggest that the production of sICAM-1 may be increased as a common pathway, regardless of etiology in SE and especially in EPC. However, further studies are required to elucidate the specific role of sICAM-1 and sP-selectin in the pathogenesis of SE, to investigate the relationship between etiology and SE and to consider these molecules as potential targets in SE treatment; because predicting outcome is usually not enough for clinicians and the biomarkers are expected to provide information to develop novel approaches in terms of treatment of the condition.

Acknowledge: Study funded by Istanbul University Scientific Research Projects (OR 27970).

Conflict of Interest: The authors declare no potential conflicts of interest with respect to the research, authorship, and/or publication of this article.

Author’s Contributions: MMA, AT, AD, CG: Research concept and design; data collecting, analysis and interpretation of data. **MMA:** Preparation of article, and Revisions. All authors approved the final version of the manuscript.

Ethical issues: All Authors declare, Originality and ethical approval of research. Responsibilities of research, responsibilities against local ethics commission are under the Authors responsibilities.

References

- Engel, J., Jr., Pitkanen, A., Loeb, J.A., Dudek, F.E., Bertram, E.H., 3rd, Cole, A.J., Moshe, S.L., Wiebe, S., Jensen, F.E., Mody, I., Nehlig, A. and Vezzani, A. Epilepsy biomarkers. *Epilepsia* 2013; 54 Suppl 4:61-69.
- Wasterlain, C.G., Fujikawa, D.G., Penix, L. and Sankar, R. Pathophysiological mechanisms of brain damage from status epilepticus. *Epilepsia* 1993; 34 Suppl 1:S37-53.
- Toro, C.T., Hallak, J.E., Dunham, J.S., Leite, J.P., Sakamoto, A.C., Guarnieri, R., Fong, V. and Deakin, J.F. The NR1 N-methyl-D-aspartate subunit and brain-derived neurotrophic factor in temporal lobe epilepsy hippocampus: a comparison of patients with and without coexisting psychiatric symptoms. *Epilepsia* 2007; 48:2352-2356.
- Lamers, K.J., Vos, P., Verbeek, M.M., Rosmalen, F., van Geel, W.J. and van Engelen, B.G. Protein S-100B, neuron-specific enolase (NSE), myelin basic protein (MBP) and glial fibrillary acidic protein (GFAP) in cerebrospinal fluid (CSF) and blood of neurological patients. *Brain Res Bull* 2003; 61:261-264.
- Gurnett, C.A., Landt, M. and Wong, M. Analysis of cerebrospinal fluid glial fibrillary acidic protein after seizures in children. *Epilepsia* 2003; 44:1455-1458.
- Rejdak, K., Kuhle, J., Ruegg, S., Lindberg, R.L., Petzold, A., Sulejczak, D., Papuc, E., Rejdak, R., Stelmasiak, Z. and Grieb, P. Neurofilament heavy chain and heat shock protein 70 as markers of seizure-related brain injury. *Epilepsia* 2012; 53:922-927.
- Royds, J.A., Davies-Jones, G.A., Lewtas, N.A., Timperley, W.R. and Taylor, C.B. Enolase isoenzymes in the cerebrospinal fluid of patients with diseases of the nervous system. *J Neurol Neurosurg Psychiatry* 1983; 46:1031-1036.
- Quirico-Santos, T., Nascimento Mello, A., Casimiro Gomes, A., de Carvalho, L.P., de Souza, J.M. and Alves-Leon, S. Increased metalloprotease activity in the epileptogenic lesion--Lobectomy reduces metalloprotease activity and urokinase-type uPAR circulating levels. *Brain Res* 2013; 1538:172-181.
- Palmio, J., Suhonen, J., Keranen, T., Hulkkonen, J., Peltola, J. and Pirttila, T. Cerebrospinal fluid tau as a marker of neuronal damage after epileptic seizure. *Seizure* 2009; 18:474-477.
- Palmio, J., Keranen, T., Alapirtti, T., Hulkkonen, J., Makinen, R., Holm, P., Suhonen, J. and Peltola, J. Elevated serum neuron-specific enolase in patients with temporal lobe epilepsy: a video-EEG study. *Epilepsy Res* 2008; 81:155-160.
- Calik, M., Abuhandan, M., Sonmezler, A., Kandemir, H., Oz, I., Taskin, A., Selek, S. and Iscan, A. Elevated serum S-100B levels in children with temporal lobe epilepsy. *Seizure* 2013; 22:99-102.
- Vezzani, A., French, J., Bartfai, T. and Baram, T.Z. The role of inflammation in epilepsy. *Nat Rev Neurol* 2011; 7:31-40.
- Heinemann, U., Kaufer, D. and Friedman, A. Blood-brain barrier dysfunction, TGFbeta signaling, and astrocyte dysfunction in epilepsy. *Glia* 2012; 60:1251-1257.
- Erbas, O., Celik, A.O., Cinar, B.P., Solmaz, V. and Aksoy, D. Doksisisiklinin pentilentetrazole indükte nöbetler üzerine olan olumlu etkisinin incelenmesi. Presentation to affirmative effect of doxycycline in pentylenetetrazole induced seizures models. *Epilepsi* 2014; 20:61-66.
- Ara, J., Mirapeix, E., Arrizabalaga, P., Rodriguez, R., Ascaso, C., Abellana, R., Font, J. and Darnell, A. Circulating soluble adhesion molecules in ANCA-associated vasculitis. *Nephrol Dial Transplant* 2001; 16:276-285.
- Goke, M., Hoffmann, J.C., Evers, J., Kruger, H. and Manns, M.P. Elevated serum concentrations of soluble selectin and immunoglobulin type adhesion molecules in patients with inflammatory bowel disease. *J Gastroenterol* 1997; 32:480-486.
- Tamagawa-Mineoka, R., Katoh, N. and Kishimoto, S. Platelet activation in patients with psoriasis: increased plasma levels of platelet-derived microparticles and soluble P-selectin. *J Am Acad Dermatol* 2010; 62:621-626.
- Huo, Y. and Ley, K. Adhesion molecules and atherogenesis. *Acta Physiol Scand* 2001; 173:35-43.
- Rossi, B., Angiari, S., Zenaro, E., Budui, S.L. and Constantin, G. Vascular inflammation in central nervous system diseases: adhesion receptors controlling leukocyte-endothelial interactions. *J Leukoc Biol* 2011; 89:539-556.
- Gearing, A.J. and Newman, W. Circulating adhesion molecules in disease. *Immunol Today* 1993; 14:506-512.
- Librizzi, L., Regondi, M.C., Pastori, C., Frigerio, S., Frassoni, C. and de Curtis, M. Expression of adhesion factors induced by epileptiform activity in the endothelium of the isolated guinea pig brain in vitro. *Epilepsia* 2007; 48:743-751.
- Fabene, P.F., Navarro Mora, G., Martinello, M., Rossi, B., Merigo, F., Ottoboni, L., Bach, S., Angiari, S., Benati, D., Chakir, A., Zanetti, L., Schio, F., Osculati, A., Marzola, P., Nicolato, E., Homeister, J.W., Xia, L., Lowe, J.B., McEver, R.P., Osculati, F., Sbarbati, A., Butcher, E.C. and Constantin, G. A role for leukocyte-endothelial adhesion mechanisms in epilepsy. *Nat Med* 2008; 14:1377-1383.
- Akiyama, H., Tooyama, I., Kondo, H., Ikeda, K., Kimura, H., McGeer, E.G. and McGeer, P.L. Early response of brain resident microglia to kainic acid-induced hippocampal lesions. *Brain Res* 1994; 635:257-268.
- Nakahara, H., Konishi, Y., Beach, T.G., Yamada, N., Makino, S. and Tooyama, I. Infiltration of T lymphocytes and expression of icam-1 in the hippocampus of patients with hippocampal sclerosis. *Acta Histochem Cytochem* 2010; 43:157-162.
- Wang, W., Wang, L., Luo, J., Xi, Z., Wang, X., Chen, G. and Chu, L. Role of a neural cell adhesion molecule found in cerebrospinal fluid as a potential biomarker for epilepsy. *Neurochem Res* 2012; 37:819-825.
- Pollard, J.R., Eidelman, O., Mueller, G.P., Dalgard, C.L., Crino, P.B., Anderson, C.T., Brand, E.J., Burakgazi, E., Ivaturi, S.K. and Pollard, H.B. The TARC/sICAM5 Ratio in Patient Plasma is a Candidate Biomarker for Drug Resistant Epilepsy. *Front Neurol* 2012; 3:181.
- Luo, J., Wang, W., Xi, Z., Dan, C., Wang, L., Xiao, Z. and Wang, X. Concentration of Soluble Adhesion Molecules in Cerebrospinal Fluid and Serum of Epilepsy Patients. *J Mol Neurosci* 2014.
- Deneva-Koycheva, T.I., Vladimirova-Kitova, L.G., Angelova, E.A. and Tsvetkova, T.Z. Serum levels of sICAM-1, sVCAM-1, sE-selectin, sP-selectin in healthy Bulgarian people. *Folia Med (Plovdiv)* 2011; 53:22-28.
- Trinka, E., Cock, H., Hesdorffer, D., Rossetti, A.O., Scheffer, I.E., Shinnar, S., Shorvon, S. and Lowenstein, D.H. A definition and classification of status epilepticus - Report of the ILAE Task Force on Classification of Status Epilepticus. *Epilepsia* 2015; 56:1515-1523.
- Thomas, J.E., Reagan, T.J. and Klass, D.W. Epilepsia partialis continua. A review of 32 cases. *Arch Neurol* 1977; 34:266-275.
- Kaplan, P.W. The EEG of status epilepticus. *J Clin Neurophysiol* 2006; 23:221-229.

32. Mayer, S.A., Claassen, J., Lokin, J., Mendelsohn, F., Dennis, L.J. and Fitzsimmons, B.F. Refractory status epilepticus: frequency, risk factors, and impact on outcome. *Arch Neurol* 2002; 59:205-210.
33. Atmaca, M.M., Bebek, N., Baykan, B., Gokyigit, A. and Gurses, C. Predictors of outcomes and refractoriness in status epilepticus: A prospective study. *Epilepsy Behav* 2017; 75:158-164.
34. Vezzani, A., Aronica, E., Mazarati, A. and Pittman, Q.J. Epilepsy and brain inflammation. *Exp Neurol* 2013; 244:11-21.
35. Ravizza, T., Gagliardi, B., Noe, F., Boer, K., Aronica, E. and Vezzani, A. Innate and adaptive immunity during epileptogenesis and spontaneous seizures: evidence from experimental models and human temporal lobe epilepsy. *Neurobiol Dis* 2008; 29:142-160.
36. Aronica, E., Boer, K., van Vliet, E.A., Redeker, S., Baayen, J.C., Spliet, W.G., van Rijen, P.C., Troost, D., da Silva, F.H., Wadman, W.J. and Gorter, J.A. Complement activation in experimental and human temporal lobe epilepsy. *Neurobiol Dis* 2007; 26:497-511.
37. Rasmussen, T., Olszewski, J. and Lloydsmith, D. Focal seizures due to chronic localized encephalitis. *Neurology* 1958; 8:435-445.
38. Rogers, S.W., Andrews, P.I., Gahring, L.C., Whisenand, T., Cauley, K., Crain, B., Hughes, T.E., Heinemann, S.F. and McNamara, J.O. Autoantibodies to glutamate receptor GluR3 in Rasmussen's encephalitis. *Science* 1994; 265:648-651.
39. Lohler, J. and Peters, U.H. (Epilepsia partialis continua (Kozevnikov epilepsy)). *Fortschr Neurol Psychiatr Grenzgeb* 1974; 42:165-212.

Effect and reliability of transcranial magnetic stimulation on neuropathic pain in stroke patients: Preliminary study

Türkan Turgay¹, Mazlum Serdar Akaltun², Neytullah Turan², Şengül Şahin^{3*}, Özlem Altındağ²

Abstract

Objective: In this paper, we aimed to evaluate the effect of repetitive Transcranial Magnetic Stimulation (rTMS) on central pain in patients with stroke.

Material and Methods: Ten patients who had a stroke history were included in this preliminary study. Patients with middle cerebral artery lesion, first-time stroke, subacute or chronic lesion and no other neurological involvement were included. Patients were examined before and after the first month of treatment with repetitive Transcranial Magnetic Stimulation (rTMS). Visual Analog Scale (VAS) was used for pain scale measurement; Leeds Assessment of Neuropathic Symptoms and Signs Scale (LANSS) and Douleur Neuropathique en 4 Questions (DN4) were used for neuropathic pain level and Beck Depression Inventory (BDI) for depressive mood. All patients received the current treatments and appropriate neurorehabilitation as recommended for the treatment of ischemic stroke

Results: This prospective study included a total of 10 post-stroke patients (mean age 58.2 ± 16.1 years; range 29 to 75, 8 male; 2 female) with neuropathic pain. The mean values of VAS, LANSS, DN4 and BDI scales were significantly decreased after rTMS treatment in all patients.

Conclusion: We discussed the preliminary results of the efficacy and safety of rTMS in the treatment of uncontrolled neuropathic pain. We consider that, rTMS may have significant effect on relief of chronic pain. These clinical parameters can be utilized for the further study of rTMS application in pain control.

Key words: Transcranial magnetic stimulation, stroke, pain.

Introduction

Stroke is a major cause of death and disability. After stroke, survivors have typically neurological sequel and stroke-related complications. The duration of stroke rehabilitation depends on the severity of stroke and related complications. Pain is one of the most common complications in patients with stroke and may adversely affect patients' quality of life (1). Opioids, tricyclic antidepressants or anticonvulsants have been found to be useful for the treatment of neuropathic pain in stroke patients (2). Despite various clinical trials there is still no consensus about the best strategies for the management of neuropathic pain (3). The other safer and non-invasive way to provide analgesic neurostimulation is also Transcranial Magnetic Stimulation (TMS).

TMS was approved by the US Food and Drug Administration for the treatment of major depression in 2008, and researchers are still investigating TMS for a number of other neurological conditions, including chronic and neuropathic pain. Studies have reported that TMS techniques are effective in central pain and may provide pain relief by altering the cortical excitability (4-6).

The prevalence of central post stroke pain was reported as 7.3% after stroke (7). Quality of life (QoL) decreases by 40% compared to pre-stroke at the end of one year after stroke (8). It can play an important role on quality of life, mood and rehabilitation as it is known that pain affects recreational activities, occupational status and sleep quality.



For most of the CPSP patients, pain is eventually associated with a hard and reduced physical function, reducing quality of life. Moreover, pain and psychological disorders are closely related, affecting their physical and psychosocial functioning. Likewise, CPSP has a significant effect on QoL and a strong relationship between pain and depression has been observed (9).

The aim of this study was to investigate the effect of TMS on neuropathic pain in a small number of subjects as a preliminary report.

Material and Methods

This prospective study included a total of 10 post-stroke patients with neuropathic pain. Age, gender, hemiplegic side and duration of stroke were investigated.

The study protocol was approved by the Gaziantep University Clinical Research Ethics Committee. The study was conducted in accordance with the principles of the Declaration of Helsinki. The inclusion criteria were as follows; middle cerebral artery lesion, first-time stroke, subacute or chronic lesion and no other neurological involvement. The exclusion criteria were as follows; multiple lesions on cranial imaging, aphasia, head trauma, acute stroke, epilepsy in their medical history. Pregnant women were also excluded. Table 1. shows an overview of patients based on demographic characteristics in this study. A written informed consent was obtained from each participant. All patients were evaluated with a full neurologic examination for sensory disorder, motor deficits, and spasticity.

Patients were evaluated at baseline and after the first month of treatment in respect to all clinical parameters.

Pain intensity was evaluated by a 10 cm Visual Analog Scale (VAS) asking for the pain experienced during the last week (10). This scale is 10 cm length. Slight pain is considered to be VAS<3.3, moderate pain 3.3-6.6, severe pain VAS 6.7-9.9 and unbearable pain VAS 10. We used two questionnaires for the diagnosis of neuropathic pain; Leeds Assessment of Neuropathic Symptoms and Signs Scale (LANSS) and Douleur Neuropathique en 4 Questions (DN4). LANSS has high sensitivity and specificity for identifying neuropathic pain. The LANSS pain scale was first used by Bennett to clinically distinguish neuropathic pain from nociceptive pain. Shortness of application time and ease of evaluation are the advantages of this test. The reliability and validity of the pain scale of LANSS was performed in 2004 by Yücel A. et al. (11). LANSS contains five symptom and two clinical examination items. The first part consist five items asking the patient about the kind of pain experienced in the last week. In the second part, presence of allodynia and determination of pinprick perception threshold are explored by health care professional. Each item should be marked as present or absent, and the presence of each sign has different score. The possible scores range from 0 to 24, with a score of 12 or greater considered to be suggestive of neuropathic pain.

DN4 is a questionnaire for neuropathic pain consisting of interview questions and physical tests. A score of 1 is given to each positive item and a score of 0 to each negative item.

The total score is calculated as the sum of the 10 items, and a total score of 4 or more out of 10 suggests neuropathic pain (12).

We assessed post stroke depression by the Beck Depression Inventory (BDI), this method being used by other studies. BDI score over 30 was associated with a severe depression (13,14).

All patients received a rehabilitation program according to each participant's functional level or requirements. Range-of-motion exercises were applied passive, active-assistive, or active, strengthening exercise, flexibility, balance and coordination training also applied in all stroke patients.

In each TMS session, 30 trains of 10 Hz stimuli for a duration of 5 seconds at an inter-train interval of 25 seconds, a total of 1500 pulses, was applied. Total duration of a TMS session was 15 minutes at intensity equal to 80% of the resting motor threshold. This area was identified as the site at which single pulse TMS contra-laterally evoked a motor potential of maximal amplitude in the first dorsal interosseus muscle of the hand, ipsilateral to the painful zone. This procedure ensured stimulation over the precentral gyrus.

The patients received the TMS, while sitting in a comfortable chair or their wheelchair. A total of 10 sessions of TMS treatment was performed in 5 sessions per week. The levels of current, duration, and stimulation types were performed by the same physiotherapist. Side effects were reported by means of this physiotherapist after each stimulations.

Statistical Analysis

The analysis were performed with SPSS (Statistical Package for Social Sciences) 22.0 program. Paired sample's T test was used to compare the clinical parameters before and after treatment. Significance was evaluated as $p < 0.05$.

Results

The gender distribution was as 8 males and 2 females. The mean age was 58.2 ± 16.1 years, mean disease duration was 2.5 ± 1.7 years. All of the patients had chronic pain. The mean duration of pain was 2.0 ± 0.7 years. Pain was localized at lower limbs at hemiplegic side and the other body parts. All patients had first ischemic cerebrovascular etiologies. Hemiplegia was on the right side in 6 patients (60%) and on the left side in 4 patients (40%). When comparing to mean difference of scores from baseline to following treatment, there was significant improvement in all clinical parameters. The mean scores of VAS, LANNS, DN4 and BDI scales were significantly better at first month of treatment in compared to baseline. TMS could improve either pain or depressive mood in all patients after the treatment sessions. Furthermore, no side effects were observed during TMS treatment. The characteristics of clinical parameters in stroke patients are determined in table 2.

Table 1. Demographic features in stroke patients

Duration of disease (year)	1 (min)	7 (max)	2.5±1.7 (mean ± SD)
Affected side	6 (right)	4 (left)	60/40 (ratio)
Age	29 (min)	75 (max)	58.2±16.1
Sex	8 (male)	2 (female)	80/20 (ratio)

SD: standart deviation; min: minimum; max: maximum

Table 2. Comparison of clinical parameters in stroke patients

	Before treatment (Mean±SD)	After treatment (Mean±SD)	P
LANSS	9.4±4.4	6.0±3.2	<0.001*
VAS	4.8±1.4	3.7±1.4	<0.001*
DN4	4.4±2.8	2.9±2.3	0.001
BDI	17.2±6.9	13.6±5.9	<0.001*

LANSS: Leeds Assessment of Neuropathic Symptoms and Signs Scale; VAS: Visual Analog Scala; DN4: Douleur Neuropathique en 4 Questions; BDI: Beck Depression Inventory; **p* < 0.05: statistically significant.

Discussion

Pain after stroke can significantly affect functionality and may adversely affect the physical activity of patients, however, there is a little data on this topic. The onset of pain in our cases occurred 1 to 4 months after the stroke. The presentation of the CPSP is variable. Adjectives such as lacerating, aching, burning, freezing, and squeezing are commonly used by patients, as observed in our patients (15). The neuropathic pain most commonly begins 1 to 6 months after stroke (16).

In some case central pain diagnosis is delayed due to the fact that patients are not hospitalized in rehabilitation clinics, their cognitive status is impaired and some of them are aphasic. It is also claimed that neuropathic pain exhibits a latent period which may be up to 18 months after stroke onset (17). In stroke survivors, the emotional status may be altered because of the functional and cognitive consequences of stroke and neuropathic pain. We evaluated 10 patients with a previous history of chronic pain who were resistant to other modalities followed in our rehabilitation clinic.

Neuropathic pain is sometimes resistant to current pharmacological treatments. Further, there are several side effects of analgesic drugs such as dizziness, drowsiness (18). In the last decade, the effects of TMS on excitatory and inhibitory cortical circuits have been used in patients with chronic pain.

Our current study showed that the neuropathic pain making difficult to treat could possibly minimize with applying TMS in patients with post stroke. We have also seen that, TMS can potentially offer a non-invasive treatment option for neuropathic pain in patients with stroke.

The analgesic effects of TMS in chronic pain have been investigated and it has been shown to provide analgesic effects in chronic pain in recent years (19-22).

Interestingly, we found a significant reduction in depression level, immediately after a rTMS sessions in patients with stroke.

Studies have shown that motor cortex stimulation has inhibitory effects on thalamic and spinal nociceptive neurons (23). Neuroimaging studies have shown that epidural electrical stimulation of the premotor cortex in patients with neuropathic pain increases blood flow in distant brain areas (eg, lateral and medial thalamus, anterior cingulate cortex, insula, brain stem) (24). It has been demonstrated that rTMS given to motor cortex activates the endogenous opioid system in a wide brain network associated with processing of pain (25).

It is unknown any procedure should be perform whether rTMS therapy is more effective in the acute or chronic stage after stroke. In our study, all patients had subacute or chronic lesion.

Stimulation frequency is play a major role on the analgesic efficacy of stimulation. It has emphasized a short-term effect of a single stimulation session of high-frequency rTMS directed at the motor cortex (26). The authors concluded that this method was not suggestive of a beneficial treatment effect for chronic pain patients long-term follow-up (27). In an another study, Hosomi et al. (28) reported data on neuropathic pain patients treated with rTMS to premotor cortex for 10 days. But they obtained a significant short term pain relief not lasting after the sessions. Short et al. (29) have shown a marginal analgesic effect of rTMS up to 2 weeks after the stimulation phase, using parameters similar to those of our study (10 Hz).

Studies have been reported that TMS was improved the neuropathic pain, with minimal side effects (30). Most safety issues concern the effects of magnetic fields on the human body, especially the risk of seizures during sessions. In our study no patients had side effects during the stimulation phase or at follow-up. We aimed that targeting

the premotor cortex in an induction 10 repeated sessions would provide an analgesic effect in pain with stroke patients (31).

According to our results, all patients tolerated well with high-frequency TMS (10 Hz) and demonstrated appreciable pain relief benefit without any side effects.

The current study has several limitations. This is a relatively small preliminary study that lacks a control group, we have shown significant benefits from rTMS for patients with neuropathic pain syndromes. Another study limitation is that the long-term effects of TMS treatment were not investigated and the data were not objective.

Conclusion

TMS is a non-invasive, short-lasting, painless and focal way modality that modulates cortical excitability. Although much has learned about the central pain modulatory mechanisms about TMS, very little is known about its mechanisms and efficacy in modulating neuropathic pain conditions. In literature controlled prospective studies are rare and the technique is still not largely used. The optimal timing for long-term efficacy and safety of post-stroke pain are still unknown. Further studies should be explored the effects of different parameters and long-term stability. Randomized controlled studies are required in further validating the efficacy of this treatment modality. Additional, studies are required to assess the underlying mechanisms of analgesia.

Conflict of Interest: The authors declare no potential conflicts of interest with respect to the research, authorship, and/or publication of this article.

Author's Contributions: TT, MSA, NT, ÖA: Research concept and design; data collecting, TT, MSA, NT, ÖA ŞŞ: Preparation of article, and Revisions. All authors approved the final version of the manuscript

Ethical issues: All Authors declare, originality and ethical approval of research. Responsibilities of research, responsibilities against local ethics commission are under the Authors responsibilities.

References

- Harrison RA, Field TS. Post stroke pain: identification, assessment, and therapy. *Cerebrovasc Dis* 2015; 39(3-4): 190-201.
- Frese A, Husstedt IW, Ringelstein EB, Evers S. Pharmacologic treatment of central post-stroke pain. *Clin. J. Pain* 2006; 22: 252–260.
- Attal N, Cruccu G, Baron R, Haanpaa M, Hansson P, Jensen TS et al. European Federation of Neurological. EFNS guidelines on the pharmacological treatment of neuropathic pain: 2010 revision. *Eur J Neurol* 2010; 17: 1113–1188.
- Klein MM, Treister R, Raij T, Pascual-Leone A, Park L, Nurmikko T et al. Transcranial magnetic stimulation of the brain: guidelines for pain treatment research. *Pain* 2015;156 (9): 1601-1614.
- Lefaucheur JP, Andre´-Obadia N, Poulet E, Devanne H, Haffen E, Londero A et al. French guidelines on the use of repetitive transcranial magnetic stimulation (rTMS): safety and therapeutic indications (French). *Neurophysiol Clin* 2011; 41: 221-295.
- Alm PA, Dreimanis K. Neuropathic pain: transcranial electric motor cortex stimulation using high frequency random noise. Case report of a novel treatment. *J Pain Research* 2013; 24: 6: 479-486.
- Klit H, Finnerup NB, Andersen G, Jensen TS. Central post stroke pain: a population-based study. *Pain* 2011; 152(4): 818-824.
- Hong E. Comparison of quality of life according to community walking in stroke patients. *J Phys Ther Sci*, 2015, 27: 2391–2393.
- Aprile I, Briani C, Pazzaglia C, Cecchi F, Negrini S, Padua L. Don Carlo Gnocchi Pain-Rehab Group.: Pain in stroke patients: characteristics and impact on the rehabilitation treatment. A multicenter cross-sectional study. *Eur J Phys Rehabil Med*, 2015; 51(6): 725-36.
- Hawker GA, Mian S, Kendzerska T, Melissa French. Measures of Adult Pain. *Arthritis Care & Research* 2011; 63: 11: 240–S252.
- Türkel Y, Türker H, Demir IA, Bayrak AO, Onar MK. Validation of self report version of the Leeds Assessment of Neuropathic Symptoms and Signs score for identification of neuropathic pain in patients from northern Turkey. *Adv Clin Exp Med*. 2014; 23(4): 599-603.
- Alkan H, Ardic F, Erdogan C, Sahin F, Sarsan A, Findikoglu G. Turkish version of the pain DETECT questionnaire in the assessment of neuropathic pain: a validity and reliability study. *Pain Med*. 2013 Dec;14(12):1933-43.
- Ilut S, Stan A, Blesneag A, Vacaras V, Vesa S, Fodoreanu L. Factors that influence the severity of post-stroke depression. *J Med Life*. 2017;10 (3): 167-171.
- Dąbrowska-Bender M, Milewska M, Gołabek A, Duda-Zalewska A, Staniszewska A. The Impact of Ischemic Cerebral Stroke on the Quality of Life of Patients Based on Clinical, Social, and Psychoemotional Factors. *J Stroke Cerebrovasc Dis*. 2017; 26(1): 101–107.
- Harrison RA, Field TS. Post stroke pain: identification, assessment, and therapy. *Cerebrovasc Dis*. 2015; 39(3-4): 190-201.
- Koçyigit H, Aydemir Ö, Fişek G, Ölmez N, Memiş A. The reliability and validity of Turkish version of Short form 36 (SF 36). *J Drug Treat* 1995, 12: 102–106.
- Klit H, Finnerup NB, Jensen TS. Central post-stroke pain: clinical characteristics, pathophysiology, and management. *Lancet Neurol* 2009; 8: 857–868.
- Fornasari D. Pharmacotherapy for Neuropathic Pain: A Review. *Pain Ther*. 2017; 6(1): 25-33.
- de Andrade DC, Mhalla A, Adam F, Texeira MJ, Bouhassira D. Neuropharmacological basis of rTMS- induced analgesia: The role of endogenous opioids. *Pain* 2011; 152: 320-326.
- Mylius V, Reis J, Knaack A, Haag A, Oertel WH, Rosenow F et al. High-frequency rTMS of the motor cortex does not influence the nociceptive flexion reflex but increases the unpleasantness of electrically induced pain. *Neurosci Lett* 2007; 415:49-54.
- Nahmias F, Debes C, Ciampi de Andrade D, Mhalla A, Bouhassira D. Diffuse analgesic effects of unilateral repetitive transcranial magnetic stimulation (rTMS) in healthy volunteers. *Pain* 2009; 147: 224-232.
- Valmunen T, Pertovaara A, Taiminen T, Virtanen A, Parkkola R, Säskeläinen SK. Modulation of facial sensitivity by navigated rTMS in healthy subjects. *Pain* 2009; 142: 149-158.
- García-Larrea L, Peyron R, Mertens P, Gregoire MC, Lavenne F, Le Bars D et al. Electrical stimulation of motor cortex for pain control: a combined PET-scan and electrophysiological study. *Pain* 1999; 83: 259-273.

24. Peyron R, Garcia-Larrea L, Deiber MP, Deiber MP, Cinotti L, Convers P et al. Electrical stimulation of precentral cortical area in the treatment of central pain: electrophysiological and PET study. *Pain* 1995; 62(3): 275–286.
25. Lamusuo S, Hirvonen J, Lindholm P, Martikainen IK, Hagelberg N, Parkkola R et al. Neurotransmitters behind pain relief with transcranial magnetic stimulation-positron emission tomography evidence for release of endogenous opioids. *Eur J Pain*. 2017; 21(9): 1505-1515.
26. O’Connell NE, Wand BM, Marston L, Spencer S, DeSouza LH. Non-invasive brain stimulation for chronic pain. *Cochrane Database Syst Rev*. 2014; 11;(4): CD008208.
27. O’Connell NE, Wand BM. Repetitive transcranial magnetic stimulation for chronic pain: Time to evolve from exploration to confirmation? *Pain* 2011; 152: 2451-2452.
28. Hosomi K, Shimokawa T, Ikoma K, Nakamura Y, Sugiyama K, Ugawa Y et al. Daily repetitive transcranial magnetic stimulation of primary motor cortex for neuropathic pain: A randomized, multicenter, double-blind, crossover, sham-controlled trial. *Pain* 2013; 154:1065-1072.
29. Short EB, Borckardt JJ, Anderson BS, Frohman H, Beam W, Reeves ST et al. Ten sessions of adjunctive left prefrontal rTMS significantly reduces fibromyalgia pain: A randomized, controlled pilot study. *Pain* 2011; 152: 2477-2484.
30. Flaster M, Meresh E, Rao M, Biller J. Central poststroke pain: current diagnosis and treatment. *Topics in stroke rehabilitation*. 2013; 20(2): 116–123.
31. Terao Y, Ugawa Y. Basic mechanisms of TMS. *J Clin Neurophysiol*. 2002; 19(4): 322-343.

Fine needle aspiration cytology (FNAC) of cystic soft tissue lesions and end tissue metamorphosis-a three year study

Ragini Thapa^{1*}, Rajveer Singh Beniwal², Prosenjit Ganguly³

Abstract

Objective: Superficial soft-tissue masses may be seen in clinical practice, but a systematic approach may help to achieve a definitive diagnosis or differential diagnosis for soft tissue lesions. The cystic lesions constitute a heterogeneous group with highly varied etiology, cytology and diversified histopathology. The aim of this study is to investigate the accuracy of FNAC diagnosis of varied cystic lesions of soft tissue lesions by comparing with the radiological and histopathology diagnosis.

Materials and Methods: Fine needle aspirations were done using a 22-24 gauge disposable needle and a 5cc to 10 cc disposable syringe for suction. Wet-fixed smears with isopropyl alcohol were stained with hematoxylin and eosin (H&E). Dry-fixed smears were stained with Leishman Giemsa along with Papanicolaou stains (PAP) were studied for cytological details and diagnosis. The excised surgical specimen and biopsy samples of the cases were processed routinely and stained with H&E and immunohistochemistry (IHC) panel was applied.

Results: Examined cystic soft-tissue masses were found as superficial (82%) and deep (18%). Superficial lesions were categorized into mesenchymal tumors, skin appendage lesions, tumor like lesions, pseudodumoural soft tissue lesions or parasitic /inflammatory lesions. Deeper lesions with cystic presentation were mostly (74%) malignant. The differential diagnosis was done according to the age of the patient, anatomic location of the lesion, salient imaging features and clinical manifestations.

Conclusion: Although the fine needle aspiration cytology of the cystic lesions, imaging characteristics of the lesions discussed are not always corresponding to the histopathologic findings what we assume, combining them with lesion location and clinical features may allow the diagnosticians to suggest a specific diagnosis in most cases.

Keywords: FNAC, Cystic soft tissue lesions

Introduction

Cystic Soft tissue tumors are defined as nonepithelial extraskeletal tissue of the body exclusive of the reticuloendothelial system, glia, and supporting tissue of various parenchymal organs (1, 2). The absence of recognizable tissue architectural patterns in cytological preparation and in cases of inflammation, rupture and trauma makes diagnosis by FNAC more difficult. Soft tissue lesions or soft tissue tumor like cases may deceive pathologist and radiologist. This soft tissue structures known as oops lesions which are focused in this study may defined according to following the final histopathological diagnosis.

The histological subtyping of soft tissue tumors in fine-needle aspiration (FNA) smears is more reliable when dealing with well differentiated tumors showing specific cytomorphological diagnostic and immunocytochemical criteria. Conversely, poorly differentiated soft tissue sarcomas can represent a difficult diagnostic group because of lack of distinctive morphological and immunocytochemical criteria. Ancillary techniques are used in and out nowadays as diagnostic help in morphological diagnosis of soft tissue lesions. Essentially the same ancillary techniques are used for cytological as for histopathological diagnosis like after preparing cell blocks.

Received 06-03-2019 Accepted 25-03-2019 Available Online 25-03-2019 Published 30-03-2019

1 Military Hospital Mhow, laboratory, Dept. of pathology, Mhow, Indore, Madhya, Pradesh, India

2 Military Hospital Mhow, Department of Radiology, Mhow, Madhya, Pradesh, India

3 Command Hospital, Dept. of Pathology, Alipore, Kolkata, West Bengal, India

* Corresponding Author: Ragini Thapa E-mail: ragpiyu2010@gmail.com Phone: +91 847 393 07 19



The most commonly used technique is Immunocytochemistry. In addition cytogenetic and molecular biological techniques as well as electron microscopy play an important role. Techniques such as polymerase chain reaction (PCR) and fluorescence in situ hybridization have been proved to be suitable for fine needle aspiration samples (1,3,4). The technique for FNA for soft tissue tumours is the same as for other types of lesions. A good guided aspiration is essential for accurate diagnosis. Frequent problems occurring can be due to missing of the lesion altogether by aspirator and reactive changes mimicking malignant cystic sarcomas (3,4). In addition, representative diagnostic areas may be difficult to aspirate from cystic, necrotic or haemorrhagic masses

Materials and Methods

The aim of the study was to know the accuracy of Fine needle aspiration cytology for diagnosis of varied cystic lesions of soft tissue in correlation with ultrasonography and histopathology diagnosis. Aspirations were done using a 22-24-gauge disposable needle and a 5cc to 10cc disposable syringe for suction. Wet-fixed smears with isopropyl alcohol were stained with hematoxylin and eosin (H&E). Dry-fixed smears were stained with Leishman Giemsa along with PAP Stain were studied for cytological details and diagnosis. The excised surgical specimen and biopsies of the cases were processed routinely and stained with Hematoxylin and Eosin and IHC panel was applied wherever requirement was there.

Statistical Analyzes

Percent of Mean and SD values of the stains were compared and presented in the tables.

Results

Out of total 60 patients accounted for 53 lesions were benign and 7 were malignant. The 41 out of 53 benign lesions were truly cystic lesions and 12 were partly cystic and solid. All the 7 malignant lesions were partly cystic and solid. The 82% of the total lesions were superficial and 8% were deep seated. Table 1 shows the distribution and types of benign cystic lesions, table 2 points to partly cystic lesions and table 3 deals with malignant cystic lesions. Statistical analysis showed that the sensitivity of FNAC for malignant lesions was 75% and for benign lesions 97.5% (Table 4,5). Sensitivity, specificity followed by positive predictive value and negative predictive value were analyzed for both benign and malignant cystic soft tissue lesions (Table 5).

Benign cystic lesions were anechoic semi cystic to cystic lesions (Fig1-4).Partially cystic lesions had mixed echogenicity comprising of anechoic to hyperechoic regions (Fig 5). Malignant cystic lesions were mostly homogenous with cystic degeneration and increased vascularity (Fig6-7). Occurrence of oops lesion was also seen (Fig 8-9).

Table1: Classification of studied benign cystic lesion.

Type of lesion	Age	Male	Female	Location	Usg finding	Total
Ganglion cyst	20-30	5	2	Finger<foot<ankle<wrist	Thick walled anechoic lesion	07
Synovial cyst	40-50	1	1	Joints<tendon	Anechoic lesion,thick wall	02
Bursal cyst	All ages	1	2	Knee<elbow<pop fossa	Thick wall,anechoic lesion	03
Epidermal inclusion cyst	All ages	8	7	Forearm<face<neck<trunk	Thick wall,fine intermission	15
Cystercosis	40-50	2	1	Thigh<pubic area	Anechoic lesion,cystic spaces	03
Lymphocoele	20-30	2	-	Neck	Multiple thin septa,<3 mm	02
Seroma	60-70	1	1	Thigh<forearm	Anechoic,cystic mural nodule	02
Post traumatic hematomas	30-40	4	1	Lower extremity<upper extremity<abd wall	Thick irregular valves,internal breakdown	05
Cutaneous microfilaria	20-30	-	01	Subcutaneous nodule	Distended lymphatics,anechoic lesion	01
Foreign body granuloma	20-30	01	0	Sacral region	Isoechoic lesion	01
Total		25	16			41

Table 2: Classification of studied partly cystic and partly solid lesions

Type of lesion	Age	Male	Female	Location	Total
Hidradenitis suppurata	30-40	0	1	Axilla	1
Glomus tumours	20-30	1	2	Thumb, ankle	3
Lymphangioma	20-30	1	0	Suboccipital	1
Hemangioma	<20	1	0	Face	1
Myxoma	40-50	0	1	Thigh	1
Schwannoma	40-50,	1	1	Gluteal Region, Leg	2
Neurofibroma	50-60	2		Thigh ,Shoulder	2
Giant cell tendon	20-30	1		Sheath tumour	1
Total		7	5		12

Table 3: Classification of studied cystic malignant lesions:

Lesion	Age	Male	Female	Location	Usg finding	Total
Synovial sarcoma	40-50	1	-	Gluteal region	homogeneously hypoechoic subcutaneous cystic mass	1
Myxoid liposarcoma	40-60	1	1	Thigh	heterogeneous echoic mass without internal hypervascularity	2
Cystic malignant nerve sheath tumour	50-60	-	1	Thigh	Heterogenous hyperechoic mass	1
Myxofibrosarcoma	40-50		1	Abdominal wall	Homogenous hypoechoic mass	1
Inflammatory MFH	30-40	01		Elbow	Complex hypoechoic mass with increased vascularity	1
Undifferentiated pleomorphic sarcoma with intense inflammation and cystic degeneration	70-80		1	Gluteal region	homogeneous echo pattern and hypoechoic margins with cystic changes and internal vascularity	1
Total		3	4			7

Table 4: Number of benign and malignant lesions cases.

	Benign Cyst	Malignant	Total
Benign	39(true negative)	2(false negative)	41
Malignant	1(false positive)	6(true positive)	7

Table 5: Statistical comparison of USG sensitivity of benign and malignant lesion cases

USG sensitivity for cystic malignant lesions	True Positive(TP)/TP+FalseNegative(FN)	75%
Specificity of Benign cystic lesions	True negative(TN)/TN+FN	97.5%
Positive predictive value of malignant lesions	TP/TP+FN	75%
Negative predictive value of benign lesions	True negative/TN+FN	90%

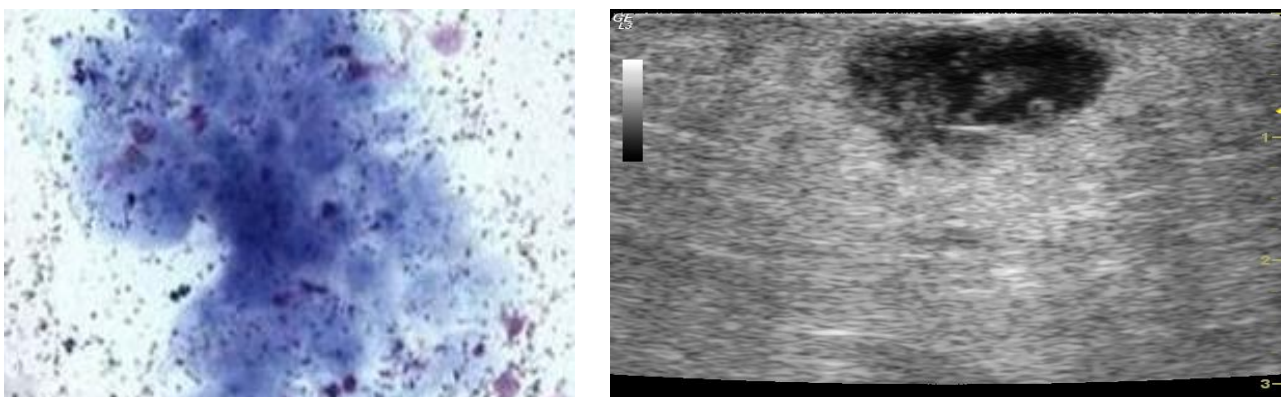


Figure 1: Cysticercosis cellulose with cyst wall in FNAC and rupture of the cystic wall on sonography.

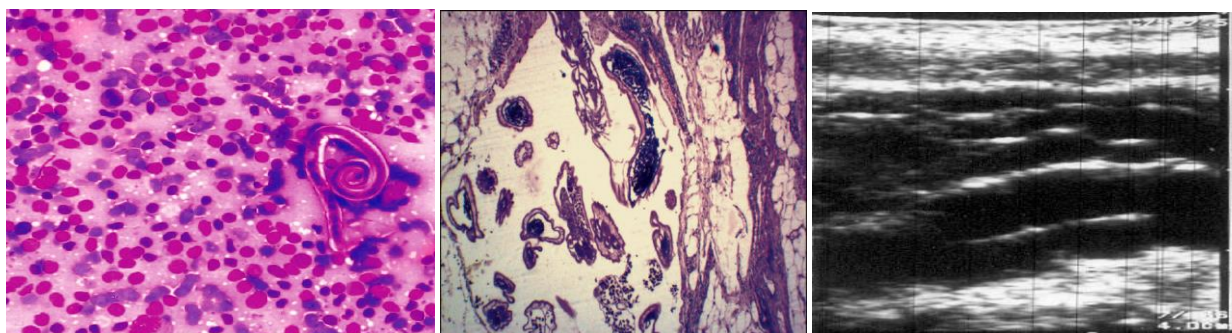


Figure 2: FNAC, HPE, USG: microfilarial worm, filarial worms were noted , lymphatics distended lymphatics in sonography in axilla-microfilaria on FNAC cystic presentation.

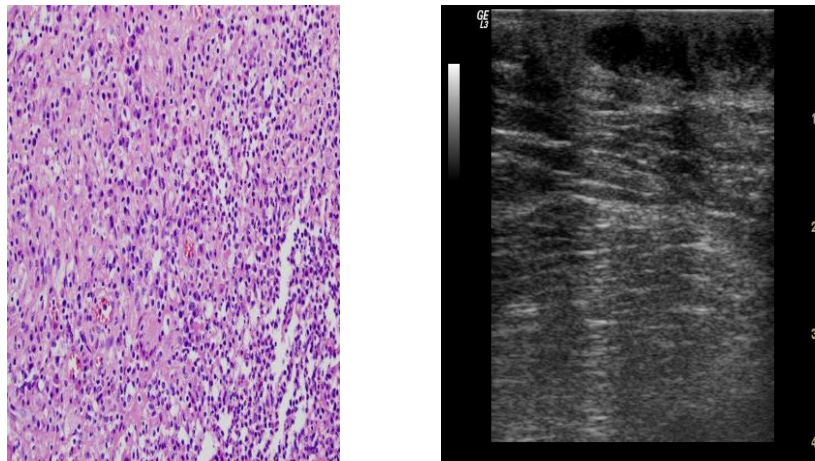


Figure 3: Lymphocoele with cystic presentation in an inflammatory background with anechoic to isoechoic presentation with thin septa

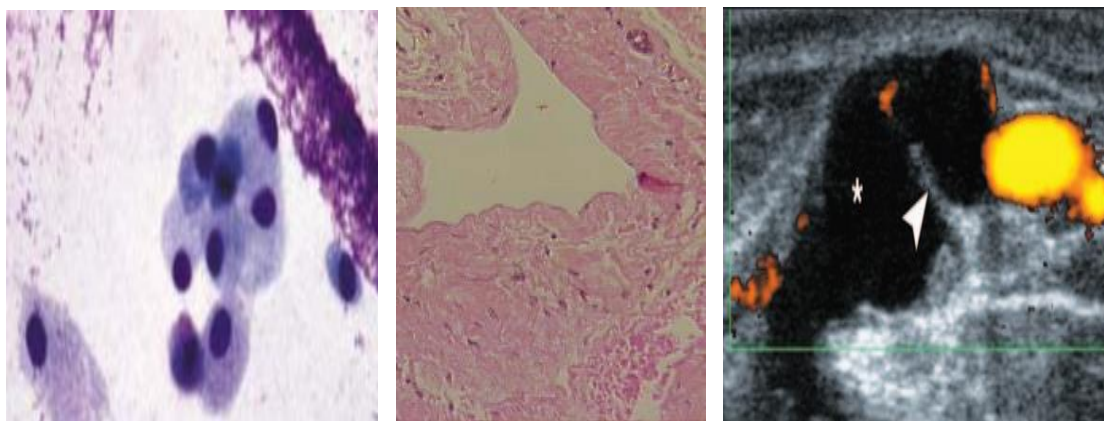


Figure 4: FNAC from ganglion cyst shows a few histiocytic like cells with pale abundant cytoplasm, myxoid background and USG shows anechoic center, thin septa (arrowhead) without increased vascularity on Doppler sonography.

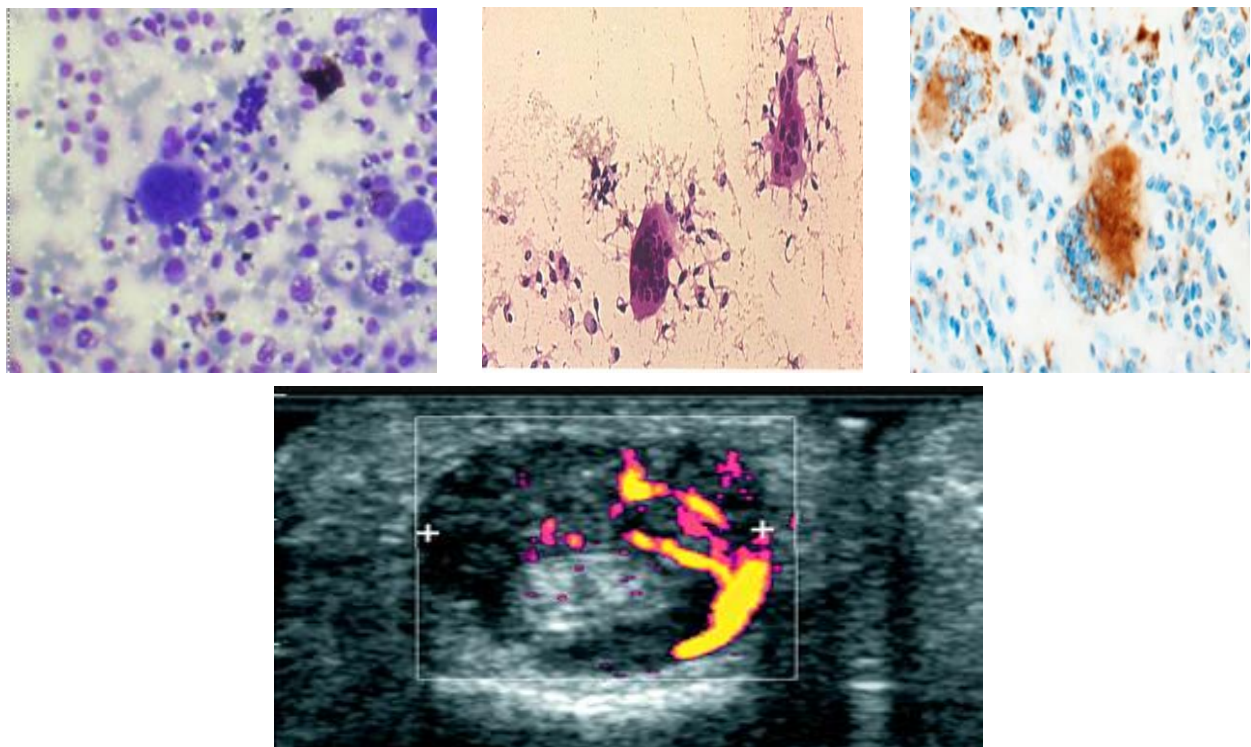


Figure 5: Giant cell tumour of tendon sheath female, index finger. FNAC shows loose clusters of spindle cells and a variable number of multinucleated giant cells with pigment (CD 68 positivity for giant cells). Transverse color power Doppler sonogram shows that tumor (cursors) has readily detectable blood flow located peripherally and centrally.

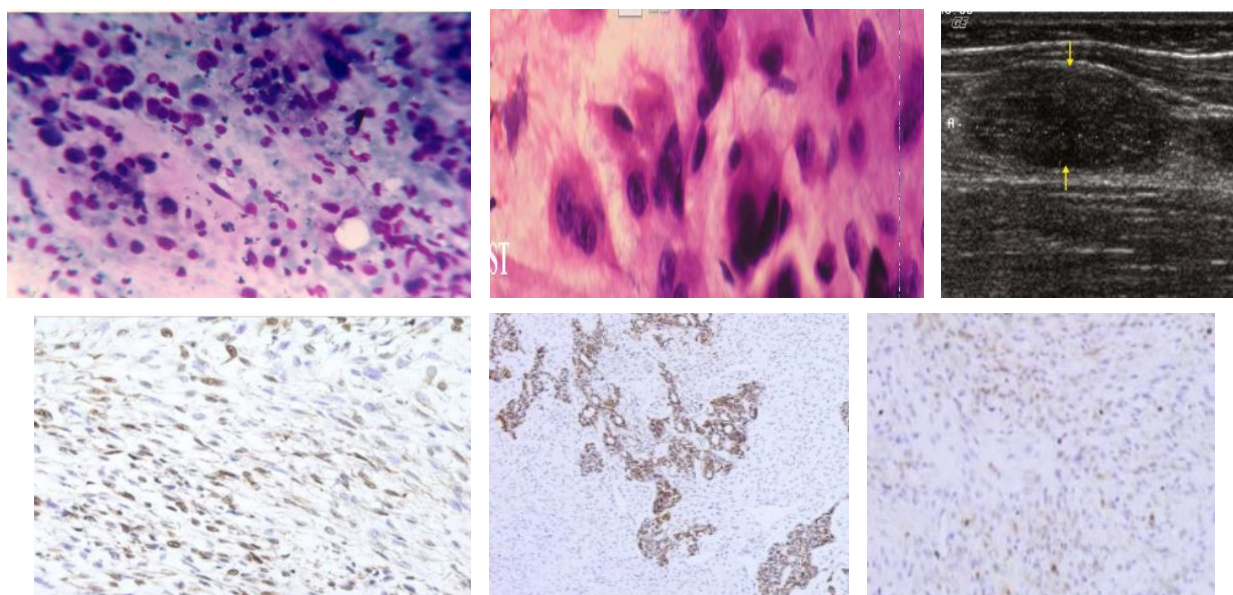


Figure 6: Malignant peripheral nerve sheath tumor (Mpnst). Cystic soft tissue swelling over forearm in 30 yr old male. Cohesive clusters and single spindle cell or pleomorphic pattern. USG shows heterogeneous hypoechoic nodule (arrows) in the left forearm with marginal infiltration. Respective spindle cell positivity for S100, Cytokeratin and Vimentin.

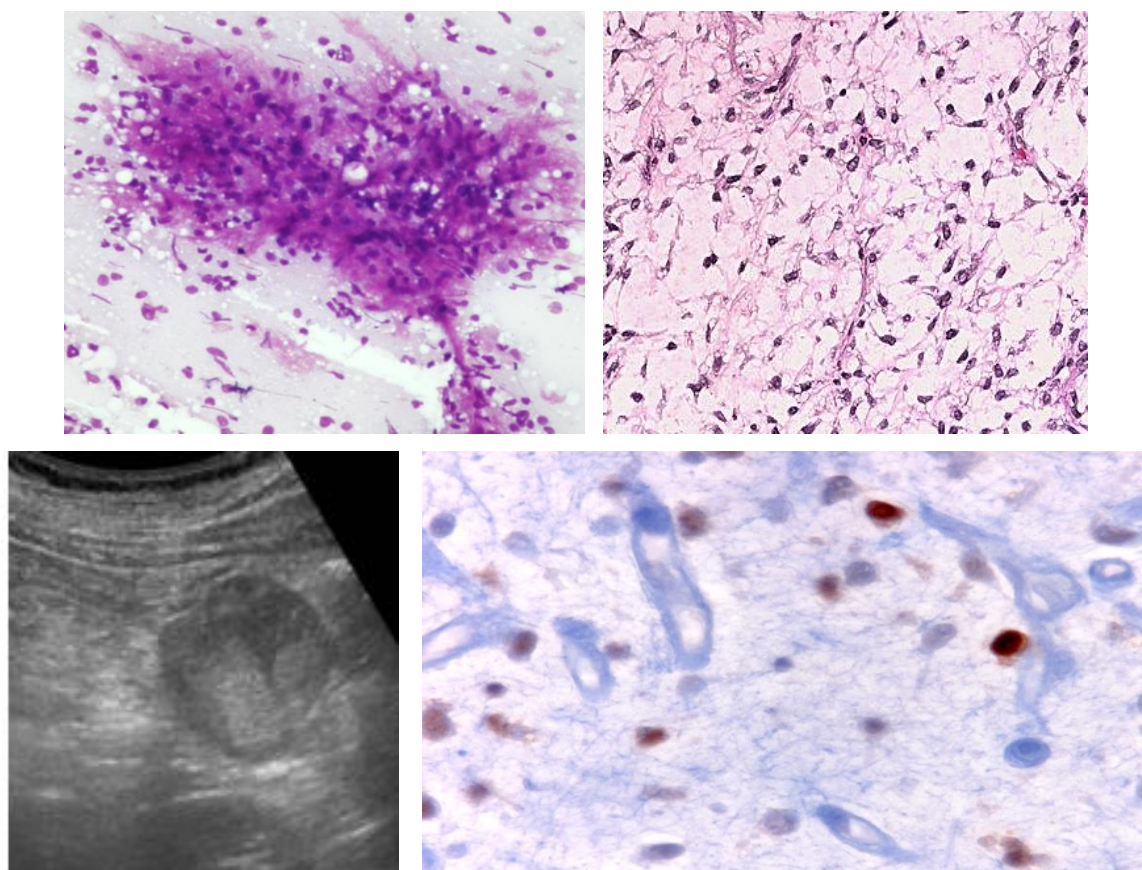


Figure 7: Myxoid stroma with plexiform capillary network, Numerous vacuolated cells. Cells have round to ovoid nuclei ,usg shows heterogeneous echic mass without internal hypervascularity as evidenced in the color Doppler ultrasonography with S100 positivity on Immunohistochemistry

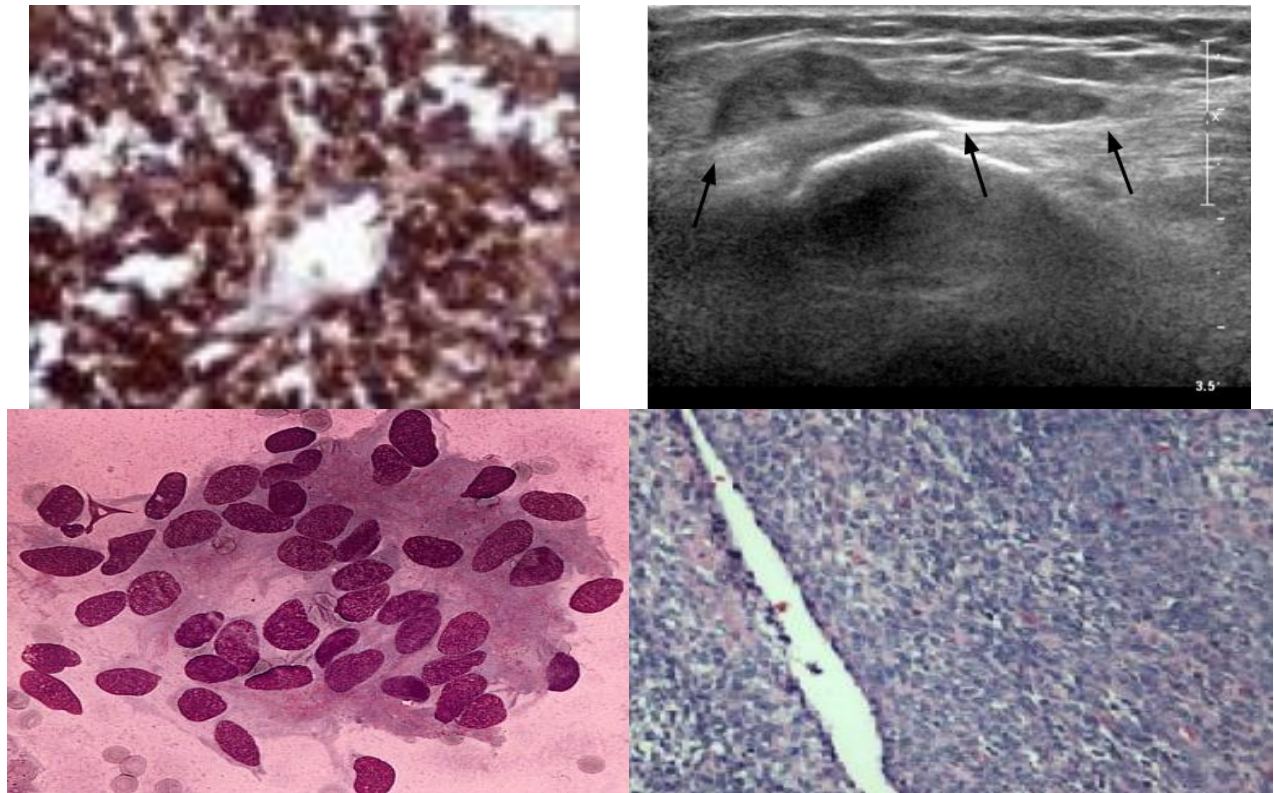


Figure 8: OOPS LESIONS, Benign Looking Malignant Lesions: Elderly female, Ultrasonography shows a homogeneously hypoechoic subcutaneous cystic mass in the lateral aspect of the left knee joint. Benign lesion was suggested. Cluster of oval to spindle cell noticed, given as malignant spindle cell lesion. Histology and IHC with cytokeratin positivity, confirmed the tumours to be cystic biphasic synovial sarcoma



Figure 9: Malignant looking benign lesions: Ultrasonography elderly, female, shows a well-defined heterogeneously hyperechoic mass on the abdominal wall. At the corner of the mass biopsy a needle is seen. Nonneoplastic tissue with hemorrhage, fibrin exudation, and hyalinization was observed. Cystic cavity with necrotic debris, fibrin and blood clots on HPE.

Discussion

Fine needle aspiration cytology is proved to be useful and convenient method in diagnosis of cystic soft tissue tumors. It gives fairly accurate diagnosis when combined with clinical and USG findings (3,4). The concept of combining Diagnostic cytology and therapeutic surgery for soft tissue sarcoma was based on assumptions that since open biopsy is omitted contamination by tumor cells in the wound hematoma is avoided and surgical margins can be left less extensive with minor predictable loss of function (5,6). However, observed cystic changes in the tumours can hinder maliciously the real findings of the same.

There are not many published series which extensively discuss FNAC of cystic soft tissue tumors with sonographic studies (7,8,9). USG though is not gold standard but remains the most commonly used diagnostic modality due to portability, cost effectiveness and lesser time taken (12-14). The present study showed that USG has 95% accuracy in cases of malignant tumors. Hence FNAC is a safe, useful screening test with good diagnostic accuracy when supported by other diagnostic data (9-11).

The present study, whose aim was to prove the efficacy of FNAC as a useful tool and a reliable technique in diagnosing soft tissue tumors, showed a sensitivity of 81.2%, specificity of 95.75%, positive predictive value of 81%, and negative predictive value of 92% that well correlated with other studies. Therefore, when a differential diagnosis for a cystic soft tissue mass is made, all available information should be considered, such as demographic data, laboratory findings, and findings from other imaging modalities (15-19). In addition, practitioners should be familiar with the variability in US imaging findings (20-23).

Conclusion

Fine needle aspiration cytology of cystic soft tissue tumours has important limitations. Samples may be limited in cellularity as a result insufficient for a diagnosis. There are certain neoplasms in which a benign versus malignant differentiation cannot be made with certainty from FNAC and it may be impossible to predict the grade on the basis of the cytology smears especially with spindle cell neoplasms that can be difficult in a background of cystic changes. US findings are helpful in the diagnosis of soft tissue tumors (24,25,26). However, the diagnosis of soft tissue tumours on the basis of US findings alone has some limitations. Thus, it is not unexpected that “oops lesions” are encountered during clinical practice but still from the above observations, we can conclude that FNAC of STT has several advantages that outweigh disadvantages. It is a useful, safe, cost-effective and easily performed as outpatient procedure for the evaluation of soft tissue tumors with accuracy rate at par with that of biopsy. It provides a rapid, non-traumatic procedure for sampling both superficial and deep seated mass lesion. Multiple samples can also be obtained during a single clinical visit thereby increases the likelihood of specimen adequacy for other ancillary tests. Our study proves the efficacy of FNAC in the diagnosis of soft tissue tumors as a useful cost-effective procedure as the results showed that the diagnostic accuracy of FNAC of soft tissue tumors is 95.37. In the light of all these results, the necessity of the use of differential methods beside FNAC for soft tissue lesions detection and classification should not be ignored.

Conflict of Interest: The authors declare no potential conflicts of interest with respect to the research, authorship, and/or publication of this article.

Author’s Contributions: RT, RSB, PG: Research concept and design, Patient examination and Sample/data collecting, **RT:** Preparation of article and Revisions. All authors approved the final version of the manuscript

Ethical issues: All Authors declare, originality and ethical approval of research. Responsibilities of research, responsibilities against local ethics commission are under the Authors responsibilities.

References

- Domanski HA, Carlen B. Distinct cytologic features of spindle cell lipoma. A cytologic-histologic study with clinical, radiologic, electron microscopic, and cytogenetic correlations. *Cancer* 2001; 93: 381-9. 2. Bode-Lesnewska B. Cytologic diagnosis of soft tissue tumours. *Pathologie* 2007; 28; 368-76
- Czeriak B ,Tuziak T Soft Tissue Lesions. In: Koss LG, Melamed MR, 5 ed. Koss' Diagnostic Cytopathology and its Histopathologic Bases , Philadelphia : Lippincott Williams & Wilkins; 2006.
- Kulkarni DR , Kokandakar HR , Kumbhakarna NR,Bhople KS. Fine needle aspiration cytology of soft tissue tumours and correlation with histopathology. *Indian J.Pathol.Microbiol.*45(1):45-48,2002.
- Paranjali S,Lakhey M.Efficacy of Fine needle aspiration cytology in diagnosis of soft tissue tumours.*Journal of Pathology of Nepal*(2012)vol.2 , 305-308.
- Enzinger FM, Weiss SW. Soft tissue tumors, 4th edition, St. Louis, MO: Mosby, 2001.
- Bharat R, Biru D G, Anagna C K, Chinoy RF. Scope of FNAC in the diagnosis of soft tissue tumors. *Cytojournal* 2007, 4: 20.
- Kilpatrick SE, Cappellari JO, Bos GD, Gold SH, Ward WG. Is fine needle aspiration biopsy a practical alternative to open biopsy for the primary diagnosis of sarcoma? Experience with 140 patients. *Am J Clin Pathol* 2001; 115(1): 59-68.
- Akerman M, Willen H, Carleu B. Fine needle aspiration in the diagnosis of soft tissue tumors; a review of 22yrs experience. *Cytopathology* 1995; 6: 236-47.
- Mirrales TG, Gonzelleza F, Menedez T. Fine needle aspiration cytology of soft tissue lesions. *Acta cytological* 1986; 30: 671-8.
- Enzinger FM, Weiss SW. Soft tissue tumors, 4th edition, St. Louis, MO: Mosby, 2001.
- Talati N, Pervez S. Soft Tissue sarcomas: pattern diagnosis or entity? *J Pak Med Assoc* 1998;48(9): 272-5.
- Campora ZR, Salaverri OC, Vazquez HA et al. Fine needle aspiration in myxoid tumors of the soft tissues. *Acta Cytol* 1990; 34: 179.
- Wakely PE Jr, Kneisl JS. Soft tissue aspiration cytopathology. *Cancer* 2000; 90(5): 292-8.
- Campora RG, Arias GM. FNAC of primary soft tissue tumor. *Acta Cytol* 1992; 36: 905-917.
- J of Evidence Based Med & Hlthcare*, pISSN- 2349-2562, eISSN- 2349-2570/ Vol. 2/Issue 27/July 06, 2015 Page 4026
- Galant J, Marti-Bonmati L, Soler R, Saez F, Lafuente J, Bonmati C, et al. Grading of subcutaneous soft tissue tumors by means of their relationship with the superficial fascia on MR imaging. *Skeletal Radiol* 1998;27:657-663.
- Lagalla R, Iovane A, Caruso G, Lo Bello M, Derchi LE. Color Doppler ultrasonography of soft-tissue masses. *Acta Radiol*1998;39:421-426.
- Chung HW, KILL HC. Ultrasonography of soft tissue “oops lesions” .*KSUM* 2015; 34(3): 217-225
- Morel M, Taieb S, Penel N, Mortier L, Vanseymortier L, Robin YM, et al. Imaging of the most frequent superficial soft-tissue sarcomas. *Skeletal Radiol* 2011;40:271-284.

20. Calleja M, Dimigen M, Sa ifuddin A. MRI of superficial soft tissue masses: analysis of features useful in distinguishing between benign and malignant lesions. *Skeletal Radiol* 2012;41:1517–1524.
21. Hwang S, Panicek DM. The evolution of musculoskeletal tumor imaging. *Radiol Clin North Am* 2009;47:435–453.
22. Hong SH, Chung HW, C hoi JY, Koh YH, Choi JA, Kang HS. MRI findings of subcutaneous epidermal cysts: emphasis on the presence of rupture. *AJR Am J Roentgenol* 2006;186:961–966.
23. Vincent LM, Parker LA, Mittelstaedt CA. Sonographic appearance of an epidermal inclusion cyst. *J Ultrasound Med* 1985;4:609–611.
24. Lee HS, Joo KB, Song H T, Kim YS, Park DW, Park CK, et al. Relationship between sonographic and pathologic findings in epidermal inclusion cysts. *J Clin Ultrasound* 2001;29:374–383.
25. Lazarus SS, Trombetta L D. Ultrastructural identification of a benign perineurial cell tumor. *Cancer* 1978;41:1823–1829.
26. Navarro OM, Laffan EE , Ngan BY. Pediatric soft-tissue tumors and pseudo-tumors: MR imaging features with pathologic correlation: part 1. Imaging approach, pseudotumors , vascular lesions, and adipocytic tumors. *Radiographics* 2009;29:887–906.

Copyright © 2019 The Author(s); This is an open-access article distributed under the terms of the Creative Commons Attribution License (<http://creativecommons.org/licenses/by/4.0>), (CC BY NC) which permits unrestricted use, distribution, and reproduction in any medium, provided the original work is properly cited. *International journal of Medical Science and Discovery*.

The relationship between illness perception and quality of life in thyroid patients who received radioactive iodine-131 ablation treatment

Güzide Akyıldız¹, Gülçin Elboğa^{2*}, Umut Elboğa³, Ertan Şahin³

Abstract

Objective: Most of the differentiated thyroid carcinoma (DTC) patients recover totally after the primary treatment. Unlike most of the other cancer types, the patients do not go through a long, challenging and weary treatment process in thyroid cancers. Illness perception has been suggested to have a significant effect on quality of life on cancer patients. We aimed to evaluate the effect of illness perception on quality of life in thyroid cancer patients who had radioactive iodine-131 treatment after total thyroidectomy.

Methods: Totally one hundred patients were included in this cross-sectional study. Patients' age, educational level, marital status and disease characteristics including stage, treatment and follow-up period since diagnosis were reviewed. Short Form 36 Health Survey Questionnaire (SF-36), the illness Perception Questionnaire were used to assess the quality of life and illness perception, respectively.

Results: When we correlated the illness perception sub-scales and quality of life dimensions in our study, the most apparent negative correlation was seen between the immunity dimension of the disease sub-scale and quality of life subdimensions. There was also a negative and significant ($p<0.05$) correlation between the dimensions of ability to understand the disease and overall health.

Conclusion: The low ability of patients to understand the disease significantly affects the negative impact on the quality of life of the disease perception. The needs of patients monitored during the remission period should be determined and a multidisciplinary approach should be preferred when necessary.

Keywords: Thyroid, Ablation, Quality of Life, Perception of Disease, Radioactive Iodine-131

Introduction

Thyroid cancer is the most common tumor on the endocrine gland. Well-differentiated thyroid carcinoma for which radioactive iodine-131 (RAI-131) treatment is administered accounts for about 85-90% of all thyroid cancers. The rate of psychiatric disorders in cancer patients is high. The meanings ascribed by patients to the cancer, and their way of perceiving the disease affect the response to cancer and the quality of life (1). Besides, medical, psychological and social factors play an important role in this response process. The determinants of the psychological response in patients diagnosed with cancer include variables such as type of cancer, treatment methods, adverse effects of the treatment, psychological maturity (2, 3, 4).

The World Health Organization defines the "Quality of Life" as "an individual's perception of their position in life in the context of the culture and value systems in which they live in relation to their goals, expectations, standards and concerns" (5). Quality of life decreases in chronic diseases and mental disorders (6). Investigations made on how the disease is perceived shows that illness perception affects individual's emotional reactions, strength of coping with problems, and accordingly, the quality of life. Illness perception is a dynamic process that involves people's beliefs about their diseases, and their cognitive views of the disease.

Received 06-03-2019 Accepted 14-03-2019 Available Online 19-03-2019 Published 30-03-2019

1 Adiyaman Research and Training Hospital, Dept of Nuclear Medicine, Adiyaman, TR

2 Gaziantep University School of Medicine Dept of Psychiatry, Gaziantep, TR

3 Gaziantep University School of Medicine Dept of Nuclear Medicine, Gaziantep, TR

* Corresponding Author: Gülçin Elboğa E-mail: gulcincinpolat@yahoo.com Phone: +90 (342) 360 60 60



An individual interprets the internal and external stimuli that might be associated with the disease in his/her mind, and creates an image of threat by attributing a meaning to them. Cognitive processes resulting from such stimuli mediate the development of disease representations (7).

In this cross-sectional study, we aimed to determine the potential impact of "illness perception" on quality of life scores in well differentiated thyroid cancer patients who had received radioactive iodine 131 treatment after total thyroidectomy.

Materials and Methods

Ethic

This study was conducted at a single center in Gaziantep University. The protocol and informed consent documentation were reviewed and approved by the Independent Ethics Committee of the University and agreed with the ethical principles of the Declaration of Helsinki.

Patient selection

A total of 100 thyroid cancer patients who were treated in Gaziantep University Nuclear Medicine Department between December 2015 and December 2016 were recruited for this cross-sectional study. We assessed well differentiated type thyroid cancer patients who had received radioactive iodine 131 treatment after total thyroidectomy.

The 'inclusion criterias' were as follows:

1. 18 years old or older when diagnosed with well differentiated type thyroid cancer diagnosed histopathologically
2. Having total thyroidectomy surgery
3. Received radioactive iodine 131 treatment
4. Established euthyroid state with hormone replacement therapy

The 'exclusion criterias' were as follows:

1. Combination with another tumor
2. Major morbidity, such as chronic obstructive pulmonary disease, coronary heart disease, cerebrovascular disease
3. Subclinical hyperthyroidism/hypothyroidism, Overt hyperthyroidism/ hypothyroidism

Data Collection

Participants completed a standardized questionnaire assessing the demographic factors and medical data, illness perception and quality of life. Thus, the following measures were used:

Short form 36 (SF36) Health Survey Questionnaire:

SF-36 Quality of Life Scale was developed by Sullivan et al (1995), and its Turkish validation-reliability study was conducted by Koçyiğit et al (1999) (8,9). This scale evaluates 8 different subsets of health.

The items in SF-36 not only question the positive situations but also the negative ones about health. Scores of the items

are coded for each dimension, and turned into a scale that is scored from 0 (the worst health state) to 100 (the best health state).

Illness perception Scale:

The Illness Perception Scale (IPS) was developed by Weinmann et al (1996), and reviewed by Moss-Morris et al (2003) (10,11). The Turkish interpretation of the scale and the validation-reliability study were performed by Armay et al (2007) on cancer patients (12). A reviewed IPS form was used in the study. IPS includes the dimensions of disease type, views on the disease, and causes of the disease.

Statistical Analysis

All data obtained from the study has been analyzed by using the SPSS 15.0 statistics program. After completion of the definitive statistical analyses, compliance of the variables to the normal distribution was evaluated by means of the Shapiro-Wilk Test. Fischer's Exact test, Yates' Chi-square test and Pearson's Chi-square test were used to determine whether the groups differ in terms of discrete variables; Student t test, and Mann-Whitney U test were used in binary comparisons of continuous variables, when parametric assumptions were met, and were not met, respectively. Furthermore, illness perception sub-dimensions and quality of life sub-dimensions were compared in our study using the RHO correlation test of Spearman.

Results

Patients social demographic characteristics were shown on the table 1. A total of 100 well differentiated thyroid cancer patients who had received radioactive iodine 131 treatment after total thyroidectomy with stage I-IV disease were involved in this study (Each stage has 25 patients e.g. 25 patients for stage I). The mean age of patients enrolled in the study was 40.62±10.28. There were 84 (84.0%) female and 16 (16.0%) male cases. Mean laboratory and clinical features values of the patients were shown in Table 2.

When we compared the illness perception sub-scale dimensions and quality of life sub-dimensions, we observed a negative and significant ($p<0.05$) correlation between the dimension of ability to understand the disease under views on disease in illness perception scale and overall health dimension under quality of life scale; between emotional representations dimension and vitality and overall health dimensions under quality of life scale; between the sub-dimension of immunity under the causes of the disease dimension and all sub-dimensions under quality of life scale, between psychological references and mental health dimension, and between accident and chance dimension and the mental health dimension under the quality of life scale (Table 3).

There was a significant difference between the Outcomes dimension of views on the disease sub-scale under illness perception of married and single cases ($p=0.035$). The Outcomes dimension scores of the married cases were significantly higher than those of single cases ($p<0.05$).

There was not a significant difference between age and illness perception scores of cases ($p>0.05$).

Table 1: Socialdemographiccharecteristics of theindividuals

Factors	Variables	Number	%
Gender	Female	84	84,0
	Male	16	16,0
EducationalStatus	None	18	18,0
	Elementary	48	48,0
	High School	24	24,0
	University	10	10,0
MaritalStatus	Married	86	86,0
	Single	14	14,0
Total		100	100,0

Table 2: Mean laboratory and clinical features values of the patients

Parameter	Patients	Standart Deviation
Age (year)	40,62	10,28
BMI (kg/m ²)	31,75	0,5
TSH (mU/l)	2,67	0,20
free-T3 (pmol/l)	3,56	0,1
free-T4 (pmol/l)	1,05	0,4
Thyrogloblin	1,09	0,2
Anti-Thyrogloblin	4,67	0,24
Duration of the disaese (Month)	5,63	0,5

Table 3: Results of the correlation analysis of the relationship between the illness perception and quality of life.

	1	2	3	4	5	6	7	8
Disease Type	-0.22	-0.23	-0.31*	-0.27	-0.30	0.03	-0.21	-0.39*
Time	-0.21	-0.22	-0.18	-0.12	0.08	-0.16	-0.05	-0.14
Conclusions	-0.29	-0.18	-0.15	-0.40*	-0.31	-0.18	-0.25	-0.32*
Personal Control	0.10	-0.03	-0.03	-0.11	0.02	-0.06	0.04	-0.08
Treatment Control	-0.24	-0.10	-0.01	-0.06	0.01	-0.05	0.04	0.37*
Views on the Disease								
Ability to Understand the Disease	0.00	-0.34*	-0.27	-0.26	-0.24	-0.11	-0.08	-0.42**
Time (Cyclic)	-0.38*	-0.32*	-0.21	-0.23	-0.24	-0.32*	-0.29	-0.07
Emotional Representations	-0.28	-0.24	-0.15	-0.42**	-0.38*	-0.28	-0.37*	-0.31*
Causes of the Disease								
Psychological References	-0.34*	-0.20	-0.21	-0.31	-0.48**	-0.16	-0.34	-0.27
Risk Factors	-0.29	-0.22	-0.19	-0.35*	-0.36*	-0.46**	-0.10	-0.24
Immunity	-0.45**	-0.40**	-0.35**	-0.42**	-0.37**	-0.46**	-0.24	-0.32*
Accident or luck	-0.29	-0.31	-0.23	-0.33*	-0.47**	-0.36*	-0.26	-0.35*

1- Physical Function 2- Physical Role Limitations 3- Emotional Role Limitations 4- Vitality 5-Mental Health 6-Social Function 7- Pain 8- Overall Health Perception *p<0.05, **p<0.01

Discussion

Most of the DTC patients recover totally after the primary treatment. Unlike most of the other cancer types, the patients do not go through a long, challenging and weary treatment process in thyroid cancers. However, unexpected developments that are beyond our perception might be seen in patients during the disease process, and the quality of life might fall. Even though there are a few studies that evaluate the quality of life of DTC patients, none cover its relationship with the illness perception [13, 14].

The main approach in our study has been the illness perception, and the extent to which such perception affects the quality of life. In a study, the only demographic factor that was found to be effective on the illness perception was education [15]. Besides, the number of iodine treatments was found to have a significantly negative effect on the illness perception. In our study, the patient group that had repetitive treatment was excluded.

None of the demographic factors was concluded to be significantly effective on the illness perception.

In the first phase of our study, a general assessment was made on the disease type, views about the disease, and causes of the disease sub-scale dimensions of the illness perception scale. In the disease type sub-scale dimension of our study, patients were asked if they experienced the 14 symptoms since the onset of disease, and whether these symptoms were associated with the disease. The high rate of the 'yes' responses given to the second question shows the severity of disease symptoms. The most common symptom was found to be fatigue also in a study conducted by Zordan et al [16]. This result was consistent with almost all studies found in literature on the chronic diseases. Fatigue and loss of strength symptoms were reported as the most frequent ones in almost all stages without any correlation with the treatment period of DTC patients.

The scores of time (acute/chronic) dimension were slightly high in our study. A high score in this dimension is a negative parameter showing the patient believes that his/her disease is chronic. It was seen that some of the patients thought that the disease would last long, it was permanent rather than temporary, and they would live with this disease for the rest of their lives. In a study conducted by 110 thyroid cancer patients, the score of time subscale was found to be close to that of our study [15].

The scores of Outcomes sub-scale are not as high as the scores observed in other cancer cases in our study. This might be attributed to the fact that the long and weary treatment process observed in other cancer cases is not seen in DTC patients, or the psychological trauma caused by other cancer types is harder.

The mean score of 'personal control perception' and 'treatment control' dimension was high in our study. This results show that patients trust in their treatment and their own control of the treatment. High scores are positive parameters on the continuity of treatment and patient compliance. However, the overall findings show that personal control perception is low in cancer patients [1,17-20]. Treatment compliance is significantly higher in DTC patients as compared to other cancer patients.

The highest scores were observed in the 'emotional representations' dimension as a negative parameter in our study. This result shows that patients struggle with a worrisome and alarming situation. According to a study, the level of education is the only demographic factor that affects the emotional representation of disease [20]. In our study, no significant correlation was found between the level of education and emotional representations. The score of emotional representations was high in all groups. The ability to understand the disease dimension scores, on the other hand, were low in our study. The low scores in this sub-scale show that patients cannot understand the disease sufficiently, or have difficulty in understanding the disease. On the contrary, the ability to understand the disease dimension received the highest score along with the personal control in another study [15]. The only varying socio-demographic factor in that study was the level of education. The higher this factor gets, the more the ability

to understand the disease score increases and the further the Outcomes dimension including the belief that disease might have serious Outcomes decreases. In our study, no correlation was observed with the level of education. In the study conducted by Karabulutlu et al with other cancer patients in our country, the scores in the ability to understand the disease dimension were significantly lower [22].

The third sub-scale of illness perception was 'causes of the disease' in our study. Psychological references ranked first in this scale, followed by risk factors with a little difference. In a study conducted on other cancer types, risk factors were the first sub-dimension. This is caused by the belief of our people that smoking ranks the first among the risk factors of cancer [23].

The reason behind the fact that psychological references rank first might be the intense feelings of stress, distress, and family problems especially in the group with low socio-economic level, as a reflection of overall life challenges. It was found that such negative factors affected the patients positively in terms of staying away from stress during the treatment process.

The correlation between the quality of life sub-dimension and illness perception sub-dimension was examined in the next part of the study. The mean physical functions sub-scale score was 53.90 in our study. The high scores in this dimension show that the person can perform his/her daily activities without any restrictions. When correlated with the illness perception, the most significant correlation was between the disease factors and immunity sub-dimension. In cases that gave the response "low body resistance" as the cause of disease, physical function score was significantly low.

A negative and significant correlation was found between the sub-dimension of ability to understand the disease and 'overall health' dimension of the quality of life scale; between the risk factors under causes of disease and 'social function' dimension of the quality of life scale; and between 'emotional representations' sub-dimension under illness perception scale and vitality sub-dimension under quality of life scale.

Conclusion

The dimension of ability to understand the disease under the views on the illness perception subscale was notably low in our study. Based on this result, it may be concluded that healthcare professionals fall short in explaining the disease. Observation of high scores in this dimension in the studies performed in developed communities has shown that we only focus on the treatment of disease, and do not put much interest in the subjective dimension of disease, which is the one perceived by the patient.

According to the illness perception scale, the scores in the emotional representations dimension, and 'personal control' and 'treatment control' dimensions were observed as positive, and negative parameters, respectively. The scores in quality of life scale were generally low. When we correlated the illness perception sub-scales and quality of life dimensions in our study, the most apparent negative

correlation was seen between the immunity dimension of the disease sub-scale and quality of life sub-dimensions. In brief, quality of life of patients believing that their body resistance was low was significantly lower than others.

In patients followed-up during the remission period with these results, a multidisciplinary approach must be preferred when required, considering the effect of illness perception on the quality of life. It would be beneficial to try different approaches on this patient population which is increasing in prevalence over time.

Conflict of Interest: The authors declare no potential conflicts of interest with respect to the research, authorship, and/or publication of this article.

Author's Contributions: GA, UE: Research concept and design; data collecting, GA, GE, UE, ES: Preparation of article, and Revisions. All authors approved the final version of the manuscript

Ethical issues: All Authors declare, originality and ethical approval of research. Responsibilities of research, responsibilities against local ethics commission are under the Authors responsibilities.

References

1. Kus T, Aktas G, Ekici H, Elboga G, Djamgoz S. Illness Perception is a strong parameter on anxiety and depression scores in early-stage breast cancer survivors: a single-center cross-sectional study of Turkish patients. *Support Care Cancer*. 2017 Nov; 25(11): 3347-3355.
2. Kus T, Aktas G, Ekici H, Elboga G. Comparison of distress in breast cancer survivors treated with different adjuvant endocrine therapies: a single-centre cross-sectional study. *Psychiatry and Clinical Psychopharmacology*. 2017; 27(3): 277-283.
3. Elboga U, Elboga G, Can C, Sahin E, Karaoglan H, Kalender H. Assessment of Procedure Related Anxiety and Depression in Oncologic Patients before F-18 FDG PET-CT Imaging. *J Psychiatry*. 2015 Dec; 23(18): 215.
4. Elboga U, Elboga G, Kalender E, Demir HD, Sahin E, Basıbuyuk M, Aydoğan F, Celen ZY, Ozkaya M. Effect of Short Term Thyroxin Withdrawal on Health Related Quality of Life in Differentiated Thyroid Carcinoma Patients. *J Psychiatry*. 2015; 18: 254.
5. American Cancer Society Cancer Facts and Figures. 2007 Annual Report. California Division and Public Health Ins. www.cancer.org/docroot/CRI
6. Sahin S, Elboga G. Functioning, quality of life, treatment adherence and insight among patients who received community mental health center services. *Cukurova Medical Journal*. 2019; 44: 2.
7. Coffey L, Mooney O, Dunne S, Sharp L, Timmons A, Desmond D, O'Sullivan E, Timon C, Goberman-Hill R, Gallagher P. Cancer survivors' perspectives on adjustment-focused self-management interventions: a qualitative meta-synthesis. *J Cancer Surviv*. 2016 Dec; 10(6): 1012-1034.
8. Sullivan M, Karlsson J ve Ware JE Jr. The Swedish SF-36 Health Survey I. Evaluation of data quality, scaling assumptions, reliability and construct validity across general populations in Sweden. *Soc Sci Med*. 1995; 41(10): 1349-1358.
9. Kocyigit H, Aydemir O ve Fisek G. (1999). Kısa form-36 (KF-36)'nın Türkçe versiyonunun güvenilirliği ve geçerliliği. *İlaç ve Tedavi Dergisi*. 1999; 12(4): 102-106.
10. Weinman J, Petrie KJ, Moss-Morris R, Horne R. The Illness Perception Questionnaire: A new method for assessing the cognitive representation of illness. *Psychol Health*. 1996; 11(3): 431-445.
11. Moss-Morris R ve Chalder T. Illness perceptions and levels of disability in patients with chronic fatigue syndrome and rheumatoid arthritis. *J Psychosom Res*. 2003; 55(4): 305-308.
12. Husson O, Haak H, Oranje W, Mols F, Reemst P, Van de Poll Franse L. Sağlıkla ilişkili yaşam kalitesi tiroid kanserinden kurtulanlar arasında: sistematik bir gözden geçirme. *Klinik Endokrinoloji*. 2011; 75 : 544-554.
13. Armay Z, Ozkan M, Kocaman N, Ozkan S. Hastalık algısı ölçeğinin kanser hastalarında türkçe geçerlik ve güvenilirlik çalışması. *Klinik Psikiyatri*. 2017; 10(4): 192-200.
14. Hoftijzer HC, Heemstra KA, Corssmit EP, van der Klaauw AA, Romijn JA, Smit JW. Quality of life in cured patients with differentiated thyroid carcinoma. *J Clin Endocrinol Metab*. 2008; 93(1): 200-203.
15. Giusti M, Sibilla F, Cappi C, Dellepiane M, Tombesi F, Ceresola E, Augeri C, Rasore E, Minuto F. A case-controlled study on the quality of life in a cohort of patients with history of differentiated thyroid carcinoma. *J Endocrinol Invest*. 2005; 28(9): 599-608.
16. Hirsch D, Ginat M, Levy S, Benbassat C, Weinstein R, Tsvetov G, Singer J, Shgara-Slutzky I, Grozinski-Glasberg S, Mansiterski Y, Shimon I, Reicher-Atir R. Illness perception in patients with differentiated epithelial cell thyroid cancer. *Thyroid*. 2009 May; 19(5): 459-65.
17. Zordan R, Manitta V, Nandurkar H, Cole-Sinclair M, Philip J. Prevalence and predictors of fatigue in haemo-oncological patients. *Internal Medicine Journal* 2014; 44(10): 1013-1017.
18. Fischer MJ, Wiesenhaan ME, Heijer AD, Kleijn WC, Nortier JWR, Kaptein AA. From despair to hope: A longitudinal study of illness perceptions and coping in a psycho-educational group intervention for women with breast cancer. *British Journal of Health Psychology*. 2013; 18(3): 526-545.
19. Iskandarsyah A, Klerk C, Suardi DR, Sadarjoen SS, Passchier J. Consulting a traditional healer and negative illness perceptions are associated with non-adherence to treatment in Indonesian women with breast cancer. *Psycho-Oncology*. 2014; 23(10): 1118-1124.
20. Hopman P, Rijken M. Illness perceptions of cancer patients: relationships with illness characteristics and coping. *Psycho-Oncology*. 2015; 24(19): 11-18.
21. Keeling M, Bambrough J, Simpson J. Depression, anxiety and positive affect in people diagnosed with low-grade tumours: the role of illness perceptions. *Psycho-Oncology*. 2013; 22 (6): 1421-1427.
22. Tan LGL, Thumboo J, Tan LKS. Health-related quality of life in thyroid cancer survivors. *Laryngoscope*. 2007; 117(3): 507-510.
23. Husson O, Haak H, Oranje W, Mols F, Reemst P, Van de Poll Franse L. Sağlıkla ilişkili yaşam kalitesi tiroid kanserinden kurtulanlar arasında: sistematik bir gözden geçirme. *Klinik Endokrinoloji*. 2011; 75 : 544-554.

Application of circular statistics to life science

Yıldırım Demir^{1*}, Ömer Cevdet Bilgin²

Abstract

Objective: The aim of the study was to explain circular statistics and hypothesis tests with birth data. The accuracy of the statistical method used in scientific research is related to the data structure and scale type. Therefore, scale types and data structures should be well defined. It is possible to frequently come across circular data in many different scientific fields such as medicine, biology and physics. These data are usually obtained by compass or clock. Compass; the flight direction of any animal that is released, the direction of the wind or the direction of current in the ocean, clock; the birth time of infants, the time of crisis, circadian rhythms or biological rhythms can be shown as examples. Apart from the clock, such data may also be obtained by a scale that expresses a time such as day, month and year.

Material and Methods: The data related to 179 normal deliveries that took place in Yüzüncü Yıl University Medical Faculty Hospital in 2008 were used. Circular data analysis was performed using the NCSS2007 statistical package program.

Results: The times of birth of infants show a uniform distribution. No significant difference at a significance level of 5% was found between the times of birth according to gender.

Conclusion: It has been stated that circular data cannot be analyzed by the analysis methods developed for linear data due to several reasons. If circular data are analyzed by linear statistical methods, inaccurate or nonsense results usually emerge. Therefore, it was emphasized that appropriate statistical methods should be used.

Key words: Circular data analysis, circular statistics, statistics, von Mises

Introduction

The suitability of statistical methods used in scientific research is directly related to the data structure and scale type. Therefore, scale types and data structures should be well defined and known by the researchers. The angular scale, which includes circular data, is usually defined within the interval scale. It is possible to frequently come across circular data related to angular scale in many different scientific fields such as medicine, biology, geology and physics (1). These data are usually obtained by compass or clock. The direction of movement of any animal that is released, the direction of the wind or the direction of current in the ocean can be shown as examples for the data obtained by compass, while the birth time of infants, the time of crisis, circadian rhythms or biological rhythms can be shown as examples for the data obtained by clock. Apart from the clock, such data may also be obtained by a scale that expresses a time such as day, month and year (2). Circular data are shown as the points on the perimeter of unit circle with central origin or the unit vectors that combine these points with origin depending on the appropriately selected zero direction and the selection of the direction of movement.

Zero direction refers to the starting point, and the direction of movement refers to clockwise or counterclockwise. Since circular data are shown on the unit circle, these observations correspond to any θ_0 angle between 0_0 and 360_0 . θ_0 angle is the angle between the unit vector and the starting point according to the reference direction (3).

Furthermore, the absence of a natural ordering of observations in circular data, overlapping of start and end points ($0=2\pi$), and the fact that the value θ is periodical with $\theta+p(2\pi)$ value for any p integer significantly differentiate circular data analysis from univariate and multivariate linear statistical analysis. Even though the need for measurements related to the selection of arbitrary zero direction and direction of movement does not make most of the classical linear statistical techniques and measurements nonsense, these techniques and measurements give incorrect results in many cases. In this context, the selection of appropriate statistical methods for circular data is important. In this study, circular data analysis methods were applied to the data on the times of birth of infants, and the interpretation of results and the suitability of these methods were discussed (4).



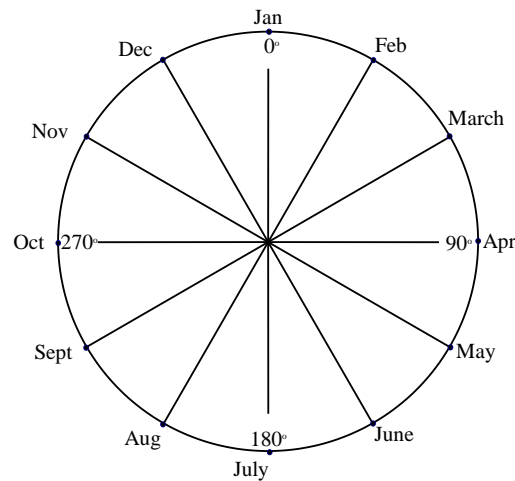


Figure 1: Circular representation of the months

Material and Methods

The research material consisted of the data related to 179 normal singleton births that took place in Van Yüzüncü Yıl University Faculty of Medicine Obstetrics and Gynecology Department between 16/04/2008 and 31/05/2008. The data set was recorded as the time of birth and baby's gender. 104 and 75 of 179 births were male and female, respectively. While all data were discussed for a single sample while evaluating the times of birth, the baby's gender (1: Male, 2: Female) was taken into account for two samples. For circular data analysis, the starting direction and the direction of rotation were taken as north and clockwise, respectively.

Whether there was any difference between the times of birth during birth events and whether there was any difference between the times of birth during birth events according to gender were evaluated by the circular data analysis method, and NCSS 2007 statistical package program was used for the evaluations (5).

Circular Descriptive Statistics: The graphical representation for getting an idea about circular data, and for the analysis and interpretation of data is one of the important stages. Different graphics and histograms are used in the representation of circular data. These graphics are used to summarize the data set and to get an idea about the data distribution before the statistical calculations.

While any point p_i in the plane is shown as (x,y) according to cartesian coordinates, it is shown as (r, θ) according to polar coordinates. Since the relationship between the directions is examined in the analysis of circular data, the vectorial sizes of data points are of no importance, and it is assumed that these data points are distributed on the perimeter of the unit circle due to the ease of operations. Thus, the distance of any point p_i to origin is 1.

Conversions are frequently performed between coordinate systems in the circular data analysis. These conversions are performed using *sine* and *cosine* trigonometric functions as the following (3).

$$\cos\theta = \frac{x}{r}, \quad \sin\theta = \frac{y}{r} \quad (1)$$

Furthermore, the data in the original scale is converted by equation (2). Here; θ gives the angular value of the data, a gives the data on the original scale and k gives the entire cycle on the scale where a is measured.

$$\theta = \frac{360.a}{k} \quad (2)$$

Mean Direction: In the calculation of mean direction for a data set indicating concentration towards a direction, firstly, the mean components of the unit vectors p_i ($i = 1, 2, \dots, n$) relative to the vertical coordinate system on the perimeter of unit circle corresponding to the angle θ_i are taken as the following,

$$\bar{x} = \frac{1}{n} \sum_{i=1}^n \cos\theta_i, \quad \bar{y} = \frac{1}{n} \sum_{i=1}^n \sin\theta_i \quad (3)$$

According to these \bar{x} and \bar{y} mean components found, the mean resultant vector length is calculated as the following

$$\bar{R} = \sqrt{\bar{x}^2 + \bar{y}^2} \quad (4)$$

and according to this equation, the mean direction is calculated by means of any of the following equations

$$\bar{\theta} = \cos^{-1}\left(\frac{\bar{x}}{\bar{R}}\right), \quad \bar{\theta} = \sin^{-1}\left(\frac{\bar{y}}{\bar{R}}\right) \quad (5)$$

If it is $R=0$, the mean direction is undefined. In this case, it is stated that the data set is not concentrated in any direction on the unit circle and does not have any mean direction. If it is $R=n$, it is stated that the data set has a mean direction and that all observations are concentrated in the mean direction (6, 7).

Circular Variance: Since resultant vector length (R) is a measure of scattering which shows to what extent the observations are concentrated around the center, there is a close relationship between the variance, which is a measure of dispersion around the mean, and the resultant vector length in circular data (8).

A sample scattering related to random unit vectors is expressed by

$$D = n - \sum_{i=1}^n \cos(\theta_i - \bar{\theta}) \quad (6)$$

Accordingly, if the dispersion around the mean direction is indicated by V , so it is

$$V = \sum_{i=1}^n \cos(\theta_i - \bar{\theta}) \quad (7)$$

and if equation (7) is resolved, the sample variance for circular data is calculated as the following

$$V = \frac{1}{n} \cdot D$$

$$V = 1 - \bar{R} \quad (8)$$

In circular data, as in linear data, as the sample variance gets smaller, the distribution becomes homogenous. However, unlike linear variance, circular variance takes values between 0 and 1. If all observations are in the same direction, in other words, if there is no scattering, the mean resultant length will be close to 1, and accordingly, the variance will be minimum. If the observations are uniformly distributed on the perimeter of the circle, in other words, if scattering is maximum, then the mean resultant vector length will be 0, and accordingly, the variance will be 1 (9, 10).

Circular Standard Deviation: The sample standard deviation for directional data is calculated by the transformation of sample variance, similar to the standard deviation on the line (4). The sample standard deviation appropriate to the circular sample variance in the range (0,1) is defined as the following

$$v = \frac{180^\circ}{\pi} \sqrt{2(1 - \bar{R})} \quad (9)$$

Circular Standard Error: Circular standard error is a simple method which is used to determine the confidence interval when the sample size is ≥ 25 .

The average of the data in the real part of the second trigonometric moment is calculated by the following equation

$$\bar{\alpha}_2 = \frac{1}{n} \sum_{i=1}^n \cos 2(\theta_i - \bar{\theta}) \quad (10)$$

and the standard error of mean direction is calculated (11) by the following equation

$$\sigma = \sqrt{\frac{n(1 - \bar{\alpha}_2)}{2R^2}} \quad (11)$$

Concentration Parameter: The concentration parameter indicated by κ reflects whether the data set is homogeneously distributed on the circle or shows a concentration in the reference direction. It can be said that the data set is distributed uniformly on the circle when this value is 0 and that serious deviations from homogeneity occurred, in other words, data showed a concentration in the reference direction when it is greater than 2 (9). A suitable approach for the concentration parameter has been defined as the following

$$\hat{\kappa} = \begin{cases} 2\bar{R} + \bar{R}^3 + 5\bar{R}^5/6 & \bar{R} < 0.53 \\ -0.4 + 1.39\bar{R} + \frac{0.43}{(1-\bar{R})} & 0.53 \leq \bar{R} < 0.85 \\ 1/(\bar{R}^3 - 4\bar{R}^2 + 3\bar{R}) & \bar{R} \geq 0.85 \end{cases} \quad (12)$$

Circular Distributions: They are probability distributions in the $0-2\pi$ range on the unit circle. Although there are many distributions on the circle, studies on very few of them were carried out. The most important ones of these distributions are the uniform distribution which is the most basic distribution on the circle, and the von Mises distribution which is expressed as the circular normal distribution, which plays an important role in statistical inference (3).

Uniform Distribution: If the observations are uniformly distributed on the circle, this distribution is expressed as a circular uniform distribution. In circular uniform distribution, all directions have equal probability between 0° and 360° . Since all of the observations are equally distributed on the circle, the mean resultant length is equal to 0 and the variance of the distribution is equal to 1. Therefore, the mean direction is undefined in the circular uniform distribution. The most important feature of this distribution is that it is not affected by rotation and reflection (2).

In uniform distribution; probability density function:

$$f(\theta) = \frac{1}{2\pi}, \quad 0 \leq \theta < 2\pi \quad (13)$$

Mean direction	μ : undefined
Mean resultant length	$\bar{\rho}$: 0
Circular dispersion	δ : ∞
p. cosine moment	α_p : $0, p \geq 1$
p. sine moment	β_p : $0, p \geq 1$ (9).

Circular Normal Distribution (von Mises): If circular random variable θ has a normal distribution, the distribution is expressed as the von Mises distribution. The most important distribution on the circle in terms of statistical inference is the von Mises distribution (12).

Bessel function converted from the first type zero order is

$$I_0(\kappa) = \frac{1}{2\pi} \int_0^{2\pi} e^{\kappa \cos(\theta - \mu)} d\theta \quad (14)$$

the probability density function of the von Mises distribution is

$$f(\theta; \mu, \kappa) = \frac{1}{2\pi I_0(\kappa)} e^{\kappa \cos(\theta - \mu)} \quad (15)$$

and here, it is defined as $0 \leq \theta, \mu \leq 2\pi, \kappa \geq 0$.

The concentration parameter κ is a parameter that measures the concentration around the mean direction μ . Therefore, as the value κ increases, a high concentration also occurs around μ , which is the mean direction of the population (13). Furthermore, when von Mises distribution is $\kappa = 0$, it is converged to uniform distribution, for the small values of κ , it is converged to cardioid distribution, and when it is $\kappa > 2$, spiral is converged to normal distribution. The effect of $1/\kappa$ in circular normal distribution and the effect of σ^2 in normal distribution are almost the same.

In Von Mises distribution;

Mean direction	μ : $\bar{\theta}$
Mean resultant length	$\bar{\rho}$: $A_1(\kappa)$
Circular dispersion	δ : $[\kappa A_1(\kappa)]^{-1}$
p. cosine moment	α_p : $A_p(\kappa)$
p. sine moment	β_p : $0, p \geq 1$ dir (9).

Hypothesis Tests for Mean Direction: An important question of circular statistics is how observations are distributed on the circle. It is stated that the distribution is not homogeneous if most of the data do not show a concentration around the mean direction, and that the distribution is homogeneous if the data has a uniform distribution on the perimeter of circle (14).

One-Sample Mean Direction Test: The confidence interval at significance level of $(1 - \alpha)$ can be used for one-sample mean direction test. It is necessary that the sample size should be at least 25 and the circular standard error should be determined for the hypothesis testing of mean direction and confidence interval. Whether the calculated mean direction is different from any mean direction given is tested.

The confidence interval for test statistics is calculated as the following

$$\mu_{gs} = \bar{\theta} \pm \sin^{-1} \left(Z_{\frac{\alpha}{2}} \cdot \sigma \right) \quad (16)$$

If the mean direction is in the confidence interval given, hypothesis H_0 is accepted at a significance level of α (2).

Two-Sample Mean Direction Test: In this test, whether the mean directions of two circular distributions are different from each other is tested. The test statistics recommended by Watson and Williams is calculated (15) by the following equation

$$F_h = \left(1 + \frac{3}{8\kappa} \right) \left[\frac{(N-2)(R_1+R_2-R)}{N-(R_1+R_2)} \right] \quad (17)$$

Results

In this study, the representation methods of circular data, the calculation of descriptive statistics, mean direction, concentration parameters, hypothesis tests for compliance with uniform distribution and von Mises distribution, and hypothesis tests for the equality of mean directions, concentration parameters and distributions were introduced. Then, an application of these methods was performed with a data set including the times of birth of infants obtained from Van Yüzüncü Yıl University Faculty of Medicine Obstetrics and Gynecology Department.

The primary aim of the study was to introduce the circular data analysis which is not commonly used in practice and to show its applicability on a real data set. For this reason, in the discussion section of the study, biological interpretations of the results are not mentioned, and statistical interpretations are mainly emphasized.

Table 1. Circular descriptive statistics of the times of birth and hypothesis tests

n=179	Time (Hour) [360°]	
Actual Mean Direction ($\bar{\theta}$)	321.938	
Mean Resultant Length (\bar{R})	0.0381	
Circular Variance (V)	0.9619	
Circular standard Deviation (v)	146.4416	
Circular Dispersion (δ)	305.6192	
Von Mises Concentration Parameter (κ)	0.0764	
Skewness (s)	0.0561	
Kurtosis (k)	-0.1048	
Mean Cos (\bar{C})	0.0300	
Mean Sin(\bar{S})	-0.0235	
Mean Cos (\bar{C}_2)	0.0281	
Mean Sin(\bar{S}_2)	0.1068	
Mean Direction $H_0=\theta$		
Score Test	Z= 0.1982	p= 0.6562
Likelihood Ratio Test	Z= 0.1981	p= 0.6563
Watson & Williams Test	F= 1.5013	p= 0.2221
Stephens Test	Z= 0.1982	p= 0.6562
Uniform Distribution Goodness-of-Fit Test	U ² =0.0792	p= 0.3840
Von Mises Distribution Goodness-of-Fit Test	U ² =42.8782	p= 0.0050

In Table 1, for the first trigonometric moments of the data, it was found that the mean cosine component (\bar{C}_1) was 0.03, the mean sine component (\bar{S}_1) was -0.0235, the mean resultant length (\bar{R}) was 0.0381 and the mean direction ($\bar{\theta}$) was 321.938. For the second trigonometric moments, it was found that the mean cosine component (\bar{C}_2) was 0.0281, and the mean sine component (\bar{S}_2) was 0.1068. These values are used in the calculation of circular descriptive statistics and tests. These statistics are needed to perform various tests on Von Mises distribution parameters.

The mean direction ($\bar{\theta}$), one of descriptive statistics of the times of birth of infants, is the expression of the average value of the data distributed on the circle in degrees, and this value was calculated as 321.938°. Accordingly, the mean time of birth is approximately 21:28. The mean resultant length (\bar{R}) is the mean length of the resultant of all observations and is a measure determining the concentration. This value is between the range of (0,1). A value close to 1 indicates a high concentration, and a value close to 0 indicates that there is no concentration and that the data is uniformly distributed around the circle. Since it is $\bar{R} = 0.0381$, it is seen that the data is uniformly distributed on the circle, in other words, the times of birth are not concentrated at any time of the day. V is the circular variance, and this value is descriptive of the spread in the data set. Circular variance takes value between the range of 0 and 1. In the sample, the fact that circular variance gets close to maximum with the value $V = 0.9619$, indicates a high spread of observations on the circle. Circular standard deviation (ν) refers to deviations from the mean direction. It was calculated to be $\nu = 146.4416^\circ$. Another measure of dispersion (δ) based on the first and second central trigonometric moments is the measure of circular scattering, and this value was calculated as 305.6192. The fact that the concentration parameter (κ), which shows the concentration of circular data on the circle, was calculated as 0.0764 indicates that the data was uniformly distributed on the circle.

With respect to skewness and kurtosis parameters, the fact that the circular skewness value is found to be close to zero indicates a symmetric single-mode data set around the mean direction. The fact that the kurtosis value is less than 0 indicates that the distribution is more kurtic, flat and that the data is heterogeneous.

The hypothesis under the Von Mises assumption is established as

H_0 : The mean direction under the circular normal distribution is equal to 0°

H_1 : The mean direction under the circular normal distribution is different from 0° .

Under this assumption, score, Likelihood ratio, Watson & Williams and Stephens test statistics are given. According to the four tests given, hypothesis H_0 is decided to be accepted, and it can be said that the mean direction of the times of birth is not different from the direction 0° at a significance level of $\alpha = 0.05$.

The Watson test statistic was used to test whether the times of birth were uniformly distributed over 24 hours a day or complied with the normal distribution. For uniform distribution, hypothesis H_0 is accepted and it can be said that the times of birth are uniformly distributed on the circle at a significance level of $\alpha = 0.05$. For Von Mises distribution, ($p < 0.05$) hypothesis H_0 is refused. Thus, it can be said that the sample is not compatible with the circular normal distribution (von Mises distribution) at a significance level of $\alpha = 0.05$.

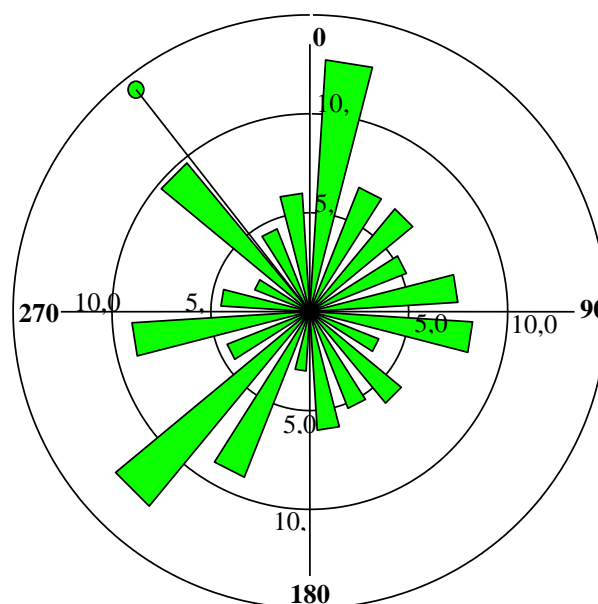


Figure 2: Rose diagram of the times of birth

The rose diagram for circular data on the times of birth is presented in Figure 2. When the figure is examined, it can be observed that the data is uniformly distributed on the circle, and that the mean direction is between 270° and 360° . When the range observed in the graphic is further reduced to a range of 305° to 335° , it can be said that the mean direction of the times of birth is approximately between 20:20 and 22:20.

Table 2. Circular descriptive statistics of the times of birth according to gender and hypothesis tests

n=179	Time (Hour) [360°]	
	Male (n=104)	Girl (n=75)
Actual Mean Direction	285.0255	328.9989
Mean Resultant Length	0.0116	0.0788
Circular Variance	0.9884	0.9212
Circular standard Deviation	171.0192	129.1738
Circular Dispersion	3035.6413	67.451
Von Mises Concentration Parameter	0.0233	0.1588
Skewness	-0.1811	0.1742
Kurtosis	-0.0250	0.0638
Mean Cos	0.0030	0.0675
Mean Sin	-0.0112	-0.0406
Mean Cos	-0.0680	0.1614
Mean Sin	0.1663	0.0245
Mean Direction $H_0 = \theta$		
Equal Distributions	Test Statistics= 0.4842 p= 0.7850	
Equal Directions	Test Statistics= 1.7478 p= 0.1879	
Equal Concentration Parameters	Test Statistics= 0.3756 p= 0.5400	
Score Test	Z= 0.0262 p= 0.8714	Z= 0.2476 p= 0.6188
Likelihood Ratio Test	Z= 0.0262 p= 0.8714	Z= 0.2474 p= 0.6189
Watson & Williams Test	F= 0.8973 p= 0.3457	F= 0.9036 p= 0.3449
Stephens Test	Z= 0.0262 p= 0.8714	Z= 0.2476 p= 0.6188
Uniform Distribution Goodness-of-Fit Test	$U^2=0.067$ p= 0.4636	$U^2=0.0765$ p= 0.4021
Von Mises Distribution Goodness-of-Fit Test	$U^2=24.609$ p= 0.0050	$U^2=17.819$ p= 0.0050

In Table 2, the data set of the times of birth was divided into two groups according to the gender of infants, and two samples were obtained by gender. The sample size was 104 baby boys and 75 for baby girls. The descriptive statistics and mean direction tests of these two samples, von Mises and normal distribution compliance tests, and the most common tests used to compare two groups were given to determine whether the times of birth varied by gender.

The value $\bar{\theta}$ calculated for the first sample indicates that the mean time of birth for baby boys is approximately 19:00. Since it is $\bar{R} = 0.0116$, it can be said that the data was uniformly distributed on the circle, in other words, the times of birth of baby boys were distributed over 24 hours of a day. The fact that the circular variance is close to maximum and the fact that the concentration parameter takes a small value like 0.0233 indicate that all observations were uniformly distributed on the circle. It was found that the circular standard deviation was 171.0192° and that the measure of circular dispersion, which is another measure of spread, was 3035.6413.

Although the skewness value of the first sample shows that the distribution is slightly skewed to the left, it can be said that this distribution is symmetric single-mode around the mean direction since it is close to zero. Similarly, although the kurtosis value also shows that the distribution is slightly flattened, it can be said that the circular kurtosis of distribution is the same as normal distribution since this value is close to zero.

The score, Likelihood ratio, Watson & Williams and Stephens test statistics were given to test whether the mean direction of the times of birth of baby boys was different from the H_0 mean direction (0°). According to these four tests given, hypothesis H_0 is decided to be accepted. Thus, it can be said that the mean direction of the times of birth of 104 baby boys (285.0255°) is not different from the direction 0° at a significance level of $\alpha = 0.05$.

The Watson test was given to test whether the times of birth of baby boys were uniformly distributed or were compatible with the von Mises distribution. For uniform distribution, hypothesis H_0 is accepted. Accordingly, it can be said that the times of birth of baby boys were uniformly distributed around the circle at a significance level of $\alpha = 0.05$. For Von Mises distribution ($p < 0.05$), hypothesis H_0 is refused. Therefore, it can be said that the sample is not compatible with the circular normal distribution at a significance level of $\alpha = 0.05$.

The value $\bar{\theta}$ calculated for the second sample indicates that the mean time of birth of baby girls is approximately 21:56. Since it is $\bar{R} = 0.0788$, it can be said that the data was uniformly distributed around the circle, in other words, the times of birth of baby girls were distributed over 24 hours of a day. The fact that the circular variance is 0.9212 and the fact that the concentration parameter was found to be 0.1588 indicate that the data was uniformly distributed around the circle. Furthermore, it was found that the circular standard deviation was 129.1738° and that the measure of circular dispersion was 67.451.

The skewness value given for girls indicates that the distribution is slightly skewed to the right. However, it can be said that the circular distribution is symmetric single-mode around the mean direction since this value is close to zero. It can be said that the kurtosis value is distributed slightly steeper than normal, but, the circular kurtosis of distribution is the same as normal distribution since this value is very close to zero.

The score, Likelihood ratio, Watson & Williams and Stephens test were given to test whether the mean direction of the times of birth of baby girls was different from the H_0 mean direction (0°). According to these four tests given, hypothesis H_0 is accepted. Thus, it can be said that the mean direction of the times of birth of baby girls (328.9989°) is not different from the direction 0° at a significance level of $\alpha = 0.05$.

The Watson test was used to test whether the times of birth of baby girls were uniformly distributed or were compatible with the von Mises distribution. For uniform distribution, hypothesis H_0 is accepted. Accordingly, it can be said that the times of birth of baby girls were uniformly distributed around the circle at a significance level of $\alpha = 0.05$. For Von Mises distribution ($p < 0.05$), hypothesis H_0 is refused, and it can be said that the sample is not compatible with the circular normal distribution at a significance level of $\alpha = 0.05$.

The Score test was used for the equality of distributions, the Watson-Williams F-test was used for the equality of mean directions, and the Concentration homogeneity test was used for the equality of concentration parameters. According to the Score test, hypothesis H_0 was accepted, and thus, it can be said that both sample distributions are equal to each other at a significance level of $\alpha = 0.05$. According to the Watson-Williams F-test, hypothesis H_0 was accepted. Thus, it can be said that there is no difference between the mean directions of both samples at a significance level of $\alpha = 0.05$. According to the Concentration homogeneity test, hypothesis H_0 was accepted, and it can be said that sample concentration parameters are equal to each other at a significance level of $\alpha = 0.05$.

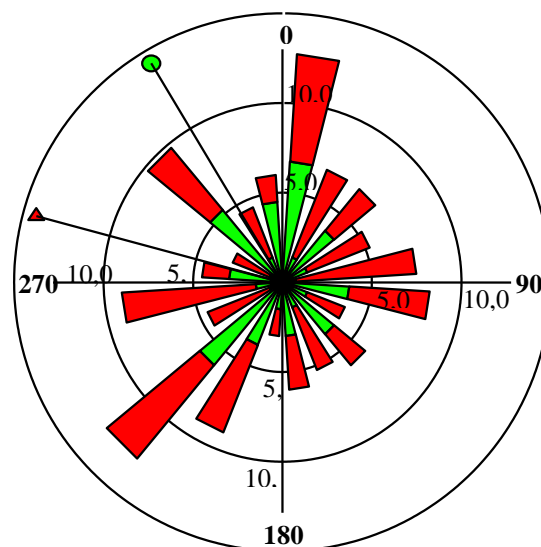


Figure 3: Rose diagram for the times of birth according to baby's gender

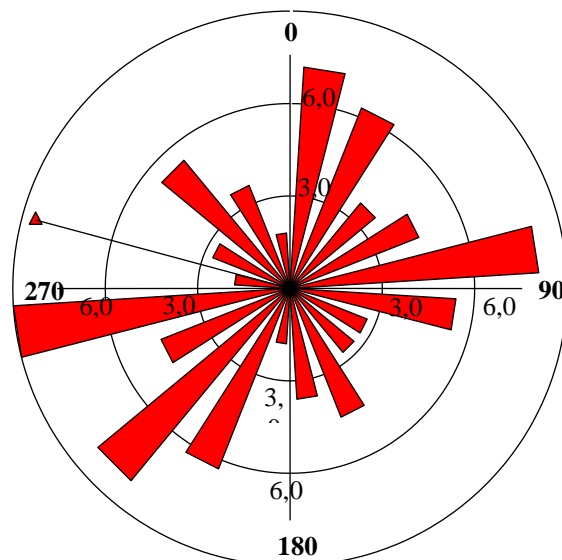


Figure 4: Rose diagram for the times of birth of baby boys

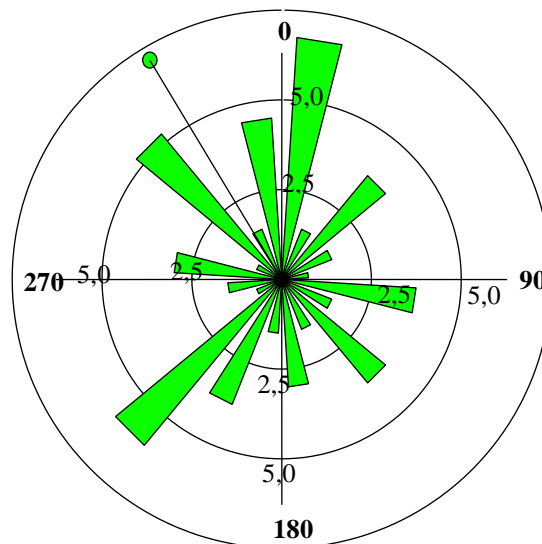


Figure 5: Rose diagram for the times of birth of baby girls

Baby boys are represented in red and baby girls are represented in green, and the rose diagram for the times of birth according to baby's gender is presented in Figure 3. The rose diagram for the times of birth of only baby boys is presented in Figure 4 while the rose diagram for the times of birth of baby girls is presented in Figure 5. When each graph given is examined separately, it can be said that the data was uniformly distributed on the perimeter of circle, in other words, there is no significant difference between the times of birth. The mean directions for the times of birth of baby boys and girls were observed between 270° and 360° . This range can be further narrowed and it can be said that there is no significant difference between the mean direction of the times of birth of baby boys and the mean direction of the times of birth of baby girls.

Discussion

Since the aim of the present study was to give information about circular data, descriptive statistics and hypothesis tests and to explain their functionality with an application, numerical values were not included in this section.

Since the validity of statistical data analysis methods to be used in a scientific research is directly related to the data structure and scale type, it is clear that the same methods cannot be applied to the data obtained from each scientific

research, and therefore, it is necessary to select an analysis method which is appropriate to the scale type and the relevant data structure.

The fact that the topographic structures of the circle and the line are different from each other makes the data structures and scale types defined on them different from each other. Therefore, since the application of linear statistical methods to the data which is represented by an angle or is in the time

cycle, in other words, on a circle or sphere surface will mostly produce false or misleading results, it is clear that it will be more accurate to use circular statistical methods in such periodic data.

It has been shown that there are significant differences between circular statistical methods and standard linear statistical methods, and that if a circular data set is attempted to be explained by standard linear statistical methods, the results may be inaccurate. Furthermore, the difficulties in the interpretation of descriptive statistics found by standard linear statistical methods were also mentioned. It is also necessary to emphasize that the results obtained will be meaningless in some cases.

It was pointed out that these important differences observed for descriptive statistics were also valid for test statistics and that the tests performed did not give proper results in some cases. Nevertheless, it was mentioned that the figures did not express a process since the point of time measured did not have an initial value no matter in which unit it is (such as seconds, minutes, hours, days, weeks, months, years).

Conclusion

It was shown that circular data cannot be analyzed by the analysis methods developed for standard linear data due to several reasons and that the results obtained in case of using standard methods could be inaccurate or could be meaningless in some cases, and therefore, it was emphasized that appropriate statistical methods should be used.

Conflict of Interest: The authors declare no potential conflicts of interest with respect to the research, authorship, and/or publication of this article.

Author's Contributions: YD, ÖCB: Research concept and design; data collecting, YD: Preparation of article, and Revisions. All authors approved the final version of the manuscript

Ethical issues: All Authors declare, originality and ethical approval of research. Responsibilities of research, responsibilities against local ethics commission are under the Authors responsibilities.

References

- Lai MK.. Some Results on the Statistical Analysis of Directional Data. Master thesis, University of Hong Kong, Hong Kong Pokfulam, 1994.
- Mardia KV, Jupp PE. Directional Statistics. John Wiley and Sons. Inc., Chichester. 2000.
- Jammalamadaka SR, SenGupta A. Topics in Circular Statistics. London: World Scientific; 2001. p.322.
- Mahan RP. Circular Statistical Methods: Applications in Spatial and Temporal Performance Analysis. DTIC-ADA240751, Virginia, 53s. 1991.
- Hintze JL. 2007. Circular Data Analysis. ss 927-955. Hintze, J.L. NCSS Help System, Published by NCSS, Utah 2823s. 2007.
- Hussin AG, Jalaluddin JF, Mohamed İ. Analysis of Malaysian Wind Direction Data Using AXIS. Journal of Applied Science Research, 2006, 2(11): 1019-1021.
- Ser G. Directional Data Analysis and An Application. Yüzüncü Yıl Üniversitesi Tarım Bilimleri Dergisi; Yıl: 2014 Cilt: 24 Sayı: 2; 121-126. 2014.
- Berens P. CircSat: A MATLAB Toolbox for Circular Statistics. Journal of Statistical Software, 2009, 31: 1-21..
- Fisher NI. Statistical Analysis of Circular Data. Cambridge University Press, New York, 277s. 1993.
- Mardia KV. Statistics of Directional Data. Academic Press. Inc., London, 357s. 1972.
- Brunsdon C, Corcoran J. Using circular statistics to analyse time patterns in crime incidence. Computers, Environment and Urban Systems, 2006, 30: 300-319..
- Gaile GL, Burt JE. Directional Statistics. Concepts and Techniques in Modern Geography, London, 39s. 1980.
- Peker KÖ, Bacanlı S. Descriptive Statistical Methods Applied to Circular Data and A Meteorological Application. Anadolu University Journal of Science and Technology, 2004, 5: 115-122.
- Zar JH. Biostatistical Analysis. Prentice Hall, New Jersey, 944s. 2010.
- Wheeler S, Watson GS. A distribution-free two-sample test on a circle. Biometrika, 1964,.51: 256-257.

A Case of Primary Malignant Melanoma of the Larynx

Özge Kaya^{1*}, Dudu Solakoğlu Kahraman¹, Gülden Diniz¹, Gönül Demir²

Abstract

Objective: Malignant melanoma of the larynx is an uncommon tumor type that can be seen as a primary tumor or as a metastasis from a cutaneous primary lesion. Morphological appearances of this tumor are readily confused with the other types of laryngeal cancers. A new case of primary laryngeal malignant melanoma has been presented in this case report .

Case: The patient was a 54-year-old man without any clinical evidence of other cutaneous malignant melanocytic lesions. Microscopically, polygonal-epithelioid tumor cells containing cytoplasmic and nuclear melanin were located under the mucosal squamous epithelial cells. Atypical mitotic figures were also present. Ulceration and disruption of the epithelium weren't observed. Immunohistochemical studies were positive for S100, HMB-45, Melan-A and vimentin while it was negative for cytokeratin. Based on findings this diagnosis was established.

Keywords: Mucosal malignant melanoma, laryngeal primary melanoma, malignant melanoma.

Introduction

Malignant melanomas are malignant tumors, most of them with cutaneous origin. Compared with cutaneous melanomas of the head and neck, primary melanoma of the upper airways and digestive tract has poor prognosis. In the medical literature only a few cases of mucosal derived malignant melanoma have been reported. Mucosal malignant melanoma of the upper aero digestive tract represents 0.5% to 3% of all malignant melanomas while laryngeal melanomas represent up to 3.6-7.4% (1). Therefore, knowledge about clinicopathologic features, treatment protocols and prognosis of mucosal malignant melanomas are not clearly established.

In this report, we define a case of primary malignant melanoma of the larynx.

Case

A 54-year-old man was admitted to our hospital with external center biopsy result. At the time of admission, he had suffered recurrent episodes of hoarseness in the past 6 months. He had no other complaints or symptoms. The patient admitted smoking average of 20 cigarettes a day for more than 30 years. He was also an occasional drinker. Computed tomography scan of the larynx demonstrated the presence of 7 mm diameter nodular lesion in anterior commissure. PET scan of the patient revealed that only larynx show up as bright spots.

After his first diagnosis in a center, he made an application to our laboratory with 4 formalin fixed paraffin-embedded blocks and 4 H&E slide preparations. On the routine HE staining, histopathologic examination larynx mucosal epithelium was intact. Ulceration and disruption of the epithelium weren't observed (Figure 1 and 2). Tumor had a predominantly solid growth pattern infiltrating submucosal compartments and located in the subepithelium. The tumor cells containing cytoplasmic and nuclear melanin, demonstrate pleomorphic eosinophilic cytoplasm with big and round vesicular nuclei with one or many nucleoli (Figure 3). Some areas of the tumor were consisted of spindle-shaped cells, while the others showed polygonal to round epithelioid cells. There was marked cellular pleomorphism, increased mitotic activity. The depth of tumor invasion was 3 mm. Pagetoid spread wasn't observed therefore the tumor was thought to be a nodular melanoma according to these findings. Lymphovascular invasion was not observed.

Immunohistochemical studies were positive for S100, HMB-45, Melan-A and vimentin while cytokeratin and iron stains were negative (Figures 4). Extensive physical examination by a clinician failed to reveal a primary cutaneous lesion. Finally, the patient was diagnosed with primary malignant melanoma of the larynx. Despite all additional treatments, the patient died 30 months later.



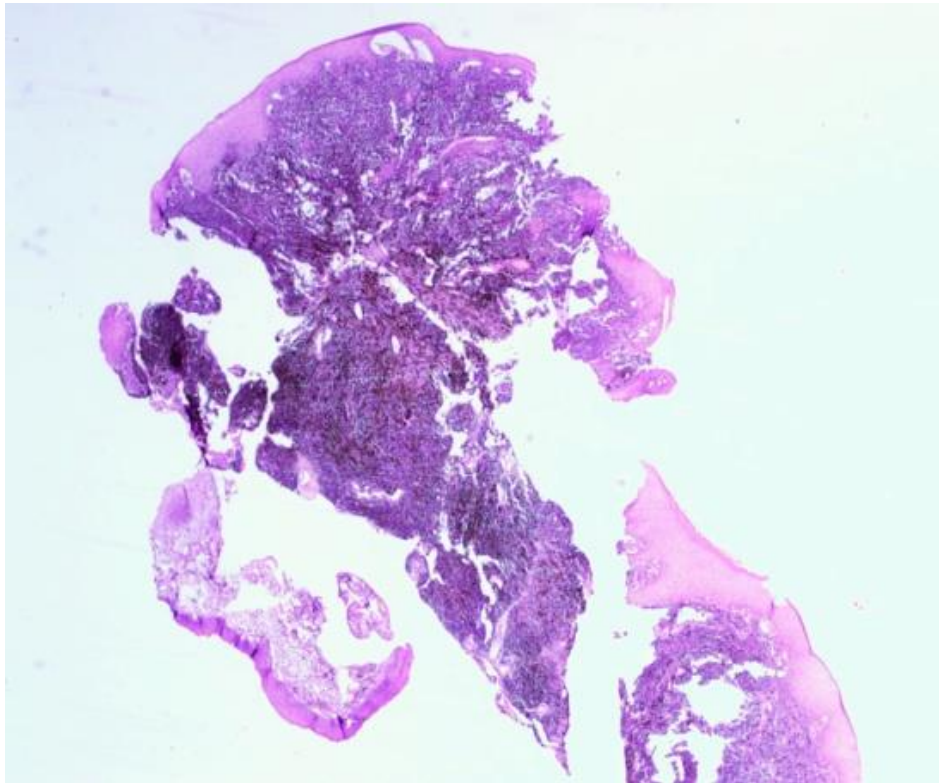


Figure 1: Malignant melanocytes under the epithelium (HE staining 4x)

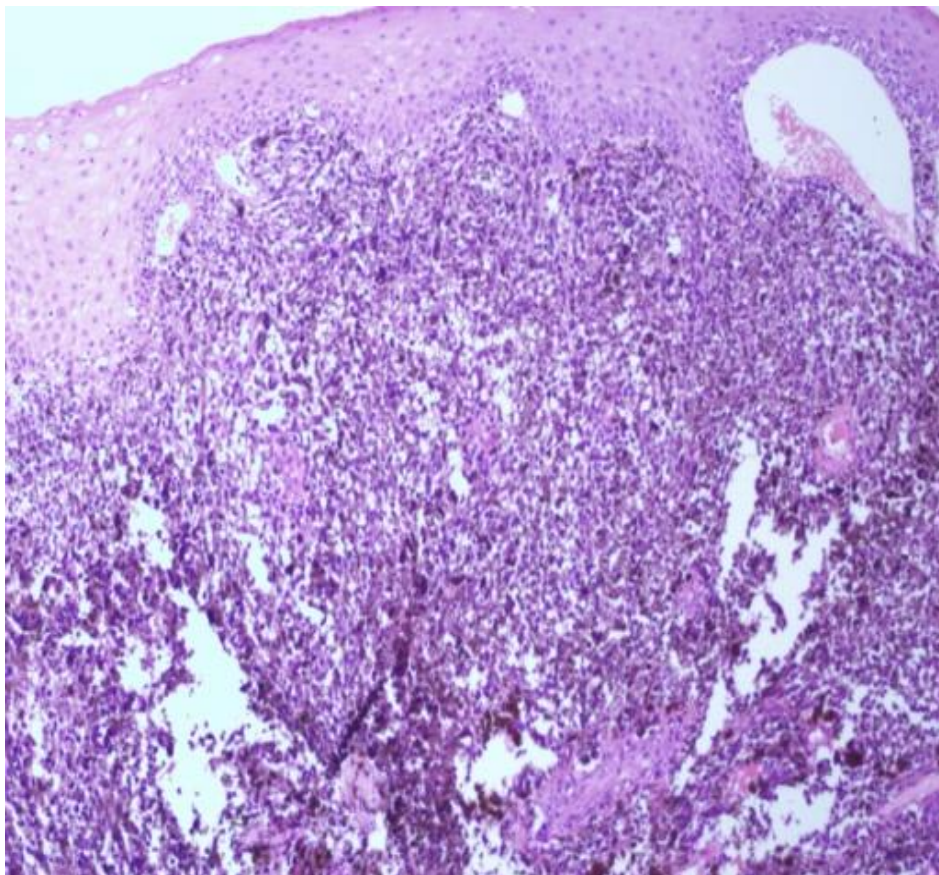


Figure 2: Intact mucosal epithelium, no ulceration (HE staining 10x)

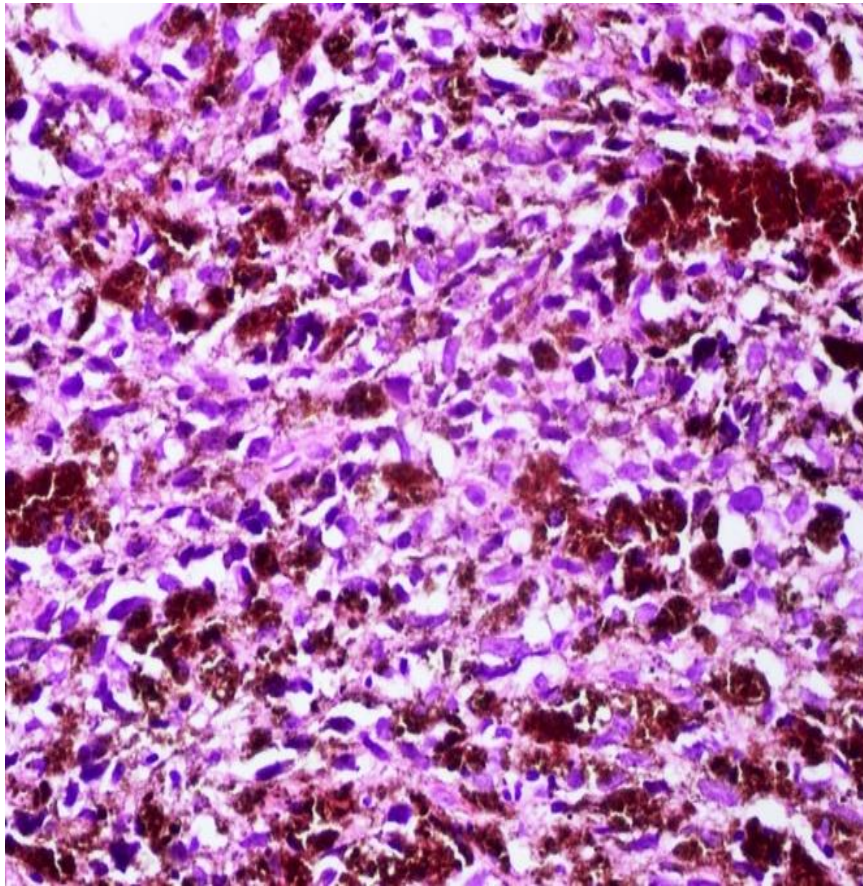


Figure 3: Malignant spindle-shaped cells mixed with pigmented cells (HE staining 40x)

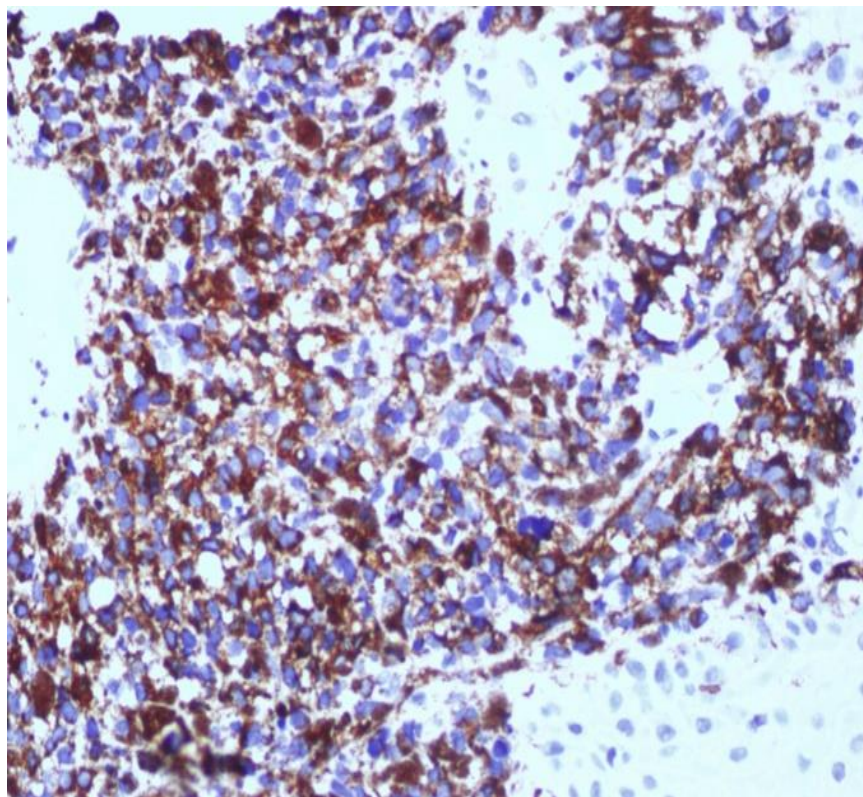


Figure 4: Immunoreaction for HMB-45 showing strong positivity staining of the tumor cell (40x)

Discussion

Melanocytes are originate from a neuroectodermal-derived structure called neuronal crest and localize in the cutaneous and non-cutaneous tissue such as leptomeninges, uvea, gastrointestinal, respiratory and genitourinary tracts (1,2). Mucosal melanoma of the larynx is extremely rare tumor with 60 cases reported in the medical literature, but it is more common than metastatic types (2). It is difficult to distinguish primary mucosal melanoma from the metastasis of an unknown cutaneous tumor. Histopathologically, primary melanoma tumors are related to overlying mucosa with junctional activity, but metastatic melanoma do not have any junctional changes with adjacent intact mucosa (6). In this case, mucosa was intact and there was junctional activity between tumor and overlying mucosa. For differentiation of primary lesion from metastasis, revealing a primary cutaneous lesion is also important.

Mucosal melanomas, which are biologically distinct from lesions of cutaneous origin, are caused by unknown factors. Etiological factors, including melanocytosis are still remained speculative (4).

Mucosal melanomas are more aggressive than cutaneous tumors with five-year survival of less than 10% (5). At the time of diagnosis, having distant metastasis is the cause of poor prognosis (6).

Accurate diagnosis of primary mucosal melanoma of the larynx can be challenging for multiple reasons. Patients may present with non-specific symptoms of hoarseness or hemoptysis. The differential diagnosis of laryngeal masses includes squamous cell carcinoma, neuroendocrine carcinoma, paraganglioma, lymphoma and granulomas. Especially, poorly differentiated squamous cell carcinoma (SCC) of the larynx must be differentiated from melanoma. Melanomas are distinguished from squamous cell carcinoma by its expression of S100, HMB45, melanA and other melanocytic markers (4-7).

The treatment for mucosal melanomas of the head and neck, require complete surgical resection with negative margins (7). Recent studies have shown that postoperative radiation therapy to the affected area may improve the local control, but it is not clear if this translates to an improvement in prognosis (2). Biochemical, targeted therapies and therapeutic drugs directed at genetic mutations are now also under investigation and available for patients (7).

Conclusion

Primary mucosal malignant melanoma is a rare and highly aggressive tumor. The diagnosis of melanoma can be very challenging for histopathological examination therefore immunohistochemical stains are essential. At the time of diagnosis, any other primary cutaneous lesions need to be excluded.

Conflict of Interest: The authors declare no potential conflicts of interest with respect to the research, authorship, and/or publication of this article.

Author's Contributions: ÖK, DSK, GD, GD: Research concept and design; data collecting, patient examination
ÖK: Preparation of article, and Revisions. All authors approved the final version of the manuscript

Ethical issues: All Authors declare, originality and ethical approval of research. Responsibilities of research, responsibilities against local ethics commission are under the Authors responsibilities.

References

1. Wenig BM. Laryngeal mucosal malignant melanoma: a clinicopathologic, immunohistochemical, and ultrastructural study of four patients and a review of the literature. *Cancer*. 1995;75:1568-1577
2. Cojocaru O, Aşchie M, Mocanu L, Baltatescu GI. Laryngeal primary malignant melanoma: a case report. *Rom J Morphol Embryol* 2015, 56(4):1513-1516
3. Amin HH, Petruzzeli GJ, Huain AN, Nickoloff BJ. Primary malignant melanoma of the larynx. *Arch Pathol Lab Med*, 2001, 125:271-273.
4. El-Naggar AK, Chan JKC, Grandis JR, Takata T, Slootweg PJ. World Health Organization Classification of Head and Neck Tumours. 4th ed. Lyon: IARC; 2017. pp. 60–61. 126-127.
5. Terada T, Saeki N, Toh K, Uwa N, Sagawa K, Mouri T, Sakagami M. Primary malignant melanoma of the larynx: a case report and literature review. *Auris Nasus Larynx*, 2007, 34(1):105-110.
6. Zaghi S, Pouldar D, Lai C, Chettri DK. Subglottic presentation of a rare tumor: primary or metastatic? Primary mucosal melanoma of the subglottic larynx. *JAMA Otolaryngol Head Neck Surg*, 2013, 139(7):739-740.
7. Lohia S, Boersma I, Lentsch E. Primary malignant melanoma of the larynx- A case report. *Otolaryngology Case Reports* 4 (2017) 15-17.

MSD

Medical Science & Discovery



International Journal of
Medical Science and Discovery
Open Access Scientific Journal
ISSN: 2148-6832
Lycia Press LONDON U.K.
www.medscidiscovery.com



www.lycians.com