

HÖYÜCEK EXCAVATIONS, 1991-1992

(Summary)

The third campaign of the Höyücek excavations took place between 23 July and 9 September, 1991; the fourth and final campaign between 6 August and 14 September, 1992*. By the end of the 1992 season an area of more than 1100 m² had been investigated (Pls. 1/1, 2; 2/1, 2), and because the stratigraphy and nature of the exposed cultures seemed clear, the project was then brought to an end¹.

Stratigraphy

Towards the end of the excavation the stratigraphy of the mound had become reasonably clear. At Höyücek we are dealing not only with quite distinctive building complexes, but with a stratigraphy that has been somewhat disturbed by recent earthmoving operations which altered the natural conical form of the cultural deposit. That the architectural remains did not reflect a normal habitation sequence became apparent during the 1990 season. Because the structures appeared to have been of special significance, we chose to address them as two phases represented by their individual characteristics, the Sancturary Phase and the Shrine Phase. Settlement remains uncovered below the Shrine Phase in 1992 are designated by the term Early Settlements Phase. This early phase continues downward to the virgin soil.

* My warm thanks are due to my colleague Jean Carpenter Efe, who translated the expansive summary of the excavation report into English.

¹ A comprehensive final report covering all seasons is not foreseen. Reports the results of the excavations are planned as follows. The present report, in conjunction with the previous annual reports, will suffice for architectural considerations. A corpus of the figurines is under my preparation as a separate study. Studies on the pottery, the chipped stone industry and animal bones (under the preparation of Dr. Gülsün Umurtak, Dr. Ayşe Baykal-Seeher and Dr. Bea De Cupere respectively) are scheduled to appear as separate articles. Annual reports have been published as follows.

Refik Duru, "Höyücek Kazıları-1989", *KST*, XII/1, Ankara (1991), s. 87-93.

_____, "Höyücek Kazıları-1989", *Belleten*, LVI (1992), s. 551-556,

_____, "Höyücek Kazıları-1990", *KST*, XIII/1, Ankara, (1992), s. 155-161.

_____, "Höyücek Kazıları-1991", *KST*, XIV/1, Ankara, (1993), s. 147-153.

_____, "Höyücek Kazıları-1992", *KST*, XV/1, Ankara, (1994), s. 97-102.

_____, "Höyücek Kazıları-1990", *Belleten*, LIX, (1995), s. 725-745.

Some other pottery displaying little, if any, relationship to the familiar Höyücek pottery was also discovered during the final campaign. This material, divorced from any architectural features, came from a trench in Squares E-F/6 on the west slope of the mound. This deposit, as well as other anomalies here on the west slope, is difficult to explain. Because the disturbances here are probably the consequence of brick factories which operated here a century ago, we have accepted this pottery as intrusive to the mound and deleted it from the stratigraphic sequence.

The terminology employed here and in the following publications represents our final assessment of the stratigraphy, replacing the temporary phases appearing in the preliminary reports (*Duru 1992a*, 155 ff.; *Duru 1993*, 147 ff.) The stratigraphy may be interpreted as follows:

The Sanctuaries Phase (<i>Kutsal Alanlar Dönemi-KAD</i>)	Late Neolithic
The Shrine Phase (<i>Tapınak Dönemi-TD</i>)	Middle (!)/Early Neolithic
The Early Settlements Phase (<i>Erken Yerleşmeler Dönemi-EYD</i>)	Early Neolithic

Architecture

The Early Settlements Phase (EYD). This early phase was investigated in one seven-by-five m. trench in Squares J-K/5. Virgin soil was encountered here at -6.07 m., four meters below the floors of the Shrine Phase (Pls. 3/1, 2; 4). Although we were able to document ashy gray strata and small areas where fires had been kindled, there were not enough architectural remains and floor levels to validate a division of these strata into subphases. The pottery from these strata is quite homogeneous, displaying no remarkable differences or development, so that the four meters of deposit from this Early Settlements Phase should represent a single cultural unit.

The Shrine Phase (TD). It is this phase which revealed the most impressive architecture at Höyücek. Remains from the Shrine Phase were exposed in a large trench 25 by 45 meters running east-west across the mound in Squares H-L/5-6 (Pls. 1/2; 2/1, 2; 4). Two important edifices

here, Structures 4 and 5, were discovered in 1990 and have already been briefly introduced (*Duru 1992a*, 156; *Duru 1993*, 147 ff.). During the two following campaigns -in 1991 and 1992- areas adjacent to the east, south, and west were opened, exposing further structures from this phase, as well as the remainder of Structures 4 and 5 and certain additions to them.

The paragraphs below summarize what have learned about the architecture of the Shrine Phase -construction techniques as well as plans- during the last two campaigns.

Although we had previously been aware that both rectangular and plano-convex mudbrick blocks were employed in the structures of the Shrine Phase (*Duru 1995*, pls. 8/1; 45/1, 2), it was not until the final campaign that we discovered bricks of both shapes employed within one and the same wall. The plano-convex bricks can be seen in the two uppermost courses of masonry in Plate 11/1. The use of vertical wooden poles along the interior and exterior faces of the walls, most probably to support the roof construction, was also confirmed (Pls. 4; 5)².

The full plan of Structures 1 and 2 from an early stage of this phase unfortunately proved irretrievable (Pl. 4). We can see that Structure 1 was entered through a door 1.20 m. wide in the south wall. On the axis of the doorway, but some 0.60 m. higher than the level of the threshold, an oven 0.65 m. high and 0.95 by 0.75 m. in plan had been erected (Pl. 9/1). Structure 2, excavated in 1990, was represented only by remnants of walls in very poor condition (*Duru 1995*, pls. 2; 4/1; 7/1).

Structures 4 and 5, from later stages of the Shrine Phase, were also excavated in 1990 (*Duru 1995*, Pls. 4-6; 7/1). The chamber with small stairs introduced as a 'shrine' in the 1990 preliminary report (Pls. 4; 7/1), has proved to be a part of -indeed, an addition to- the subsequently exposed and quite well preserved Structure 3 (Pls. 4; 5; 7/1).

The walls of Structure 3 were quite uniform in thickness with shallow niches formed by slight projections (0.10 to 0.15 m.) on the interior, creating an effect similar to that of a folding screen. The main entrance was in the south. Interruptions in the north and west walls suggest that there

² Samples of these posts from the southern part of Structure 1 were collected by P.Ian Kuniholm and his colleagues for dendrochronological analysis.

may have been doors here as well. A large rectangular oven 2.90 by 1.50 m. in plan was situated on axis with the southern entrance (Pls. 7/1; 9/2). The east wall was lined with several boxes or chests formed of clay slabs. Five large marble basins, four of them in excellent condition, were discovered *in situ* near the door leading to Structure 4, and a variety of imaginatively shaped vessels -fantasy forms- were recovered both inside the oven and on the floor of Structure 3 (Pls. 23/2,3; 24/1,2).

Several short sections of interrupted walls uncovered at the junction of Squares H/5 and H/6 may represent an atelier associated with Structure 3. There was evidence that fires had been kindled here, and various tools had been left lying about: grinding stones, mortars, and pestles (Pls. 4; 5; 8/1,2). Nearly every clay chest found in this area was full (Pl. 10/2). From these boxes and the adjoining floors came a miniature table of baked clay (Pls. 54; 56; *Duru 1994a*); marble basins, some stacked one inside the other; a pottery askos; and two marble ladles carved with animal heads (Pls. 57/1, 2; 39/1,2; 23/4; 56/2, 3).

It would appear that Structure 3 and the small accompanying room 4 was no ordinary residence. Suggesting a religious connotation for this complex, we are introducing it as a shrine and interpreting the small room, Structure 4 with its built-in features of 'sacral stairs' and 'sacral cell' (*Duru 1995*, Pls. 5; 6; 10), as the most holy precinct, the *adyton*. Structure 5, then, may well have served as a parsonage, the residence of the priest or priests officiating in the shrine (*Duru 1995*, Pl. 4/1, 2).

The Sanctuaries Phase (KAD). Architectural remains from this, the latest phase of settlement on the mound, were sparse and scattered, as reported following the 1990 campaign. Due to the concentration of finds most distinctive in character in specific areas, we named it the Sanctuaries Phase. Only one fragmentary wall from this phase appeared in subsequent campaigns, a short stretch of wall found near the western edge of the trench in Square L/5 (Pl. 12/1).

Fragmentary plastered floors belonging to this phase appeared only 0.50 to 0.60 m. below the surface of the mound at the juncture of squares I-J/5-6 (Pl. 12/1). Layers indicate that these had been repaved on several occasions (Pl. 13/1, 2). Although no traces of walls or architecture whatsoever were to be found associated with the floors here, the numerous 'mother goddess' figurines and many idol fragments found *in situ* on the floors indicate that

the area held special religious significance; it has therefore been designated as the Third Sanctuary.

The trench on the west slope. In the 1992 season, a five-by-ten meter trench was opened on the skirts of the mound in Squares E-F/6 (Pls. 1/1; 2/2). Just below the surface we encountered fragments of mudbrick scattered over a wide area (Pl. 14/1). There proved to be heaps of mudbrick here, the upper surface of which inclined steeply downward toward the west. The deposit, without any structural traces suggestive of walls, continued to a depth of 2.60 m. below the present level of the fields. Virgin soil appeared at -8.00 m. Although sherds were recovered from the mudbrick deposit here, there was no evidence of stratification at all, and the pottery itself appeared totally foreign to the material we had been excavating at Höyücek; some bears painted ornament. It was clear that this burnt mudbrick mixed with sherds did not represent deposit from settlement here, but had somehow been dumped or buried here.

From the elders of the local modern community we learned that brick and tile works had been located on the mound at the turn of the century. The burnt brick could well have been material discarded from this operation. Most important from the archaeological standpoint is that the pottery found in this deposit has appeared nowhere else in the excavations at the mound. The material here was probably discarded from earth brought to the mound from the surroundings at the beginning of this century for the purpose of making bricks or roof tiles.

Pottery

The pottery from the Early Settlements Phase in Trench A excavated in 1992 has been stratigraphically divided into three subphases, numbered downward, the third subphase representing the lowermost and earliest material. No general distinctions were noticeable between the pottery of these subphases. The biscuits of the wares are dark tones, for the most part gray, sometimes brown. Nearly every sherd is well burnished. The forms most characteristic of this early phase are open bowls with a range of 'S'-profiles, and squat globular jars (Pl. 15).

There is little to add to what we said about the pottery of the Shrine Phase following the 1990 season. The wares of this phase display a relatively high quality of production when compared to those of the preceding and

subsequent phases. The form repertory is also rich, including a great variety of most unusual shapes. The so-called 'kidney-shaped' vessels have been attested in greater number in the successive campaigns (Pls. 18/3; 23/2, 3). From Structure 3 came two medium-sized pots of the type with opposing lug handles, these distinctive because they display decidedly inturning 'antisplash' rims, a feature not early attested on the form (Pls. 18/1, 2; 24/1, 2). From the floor of the atelier near the shrine, came an addition to our catalogue of bird- or duck-shaped askoi (Pls. 21; 23/4).

To the list of distinctive vessels from the Sanctuaries Phase (described in *Duru 1995*), we can add many examples from the last two campaigns (Pls. 26; 27; 29/1-4; 30/2).

A short description of the pottery from the trench on the west slope will suffice, for there is no stratigraphy by which to orient it. The wares among this material, foreign to Höyücek, are all characterized by thick walls and relatively crude production. Painted wares constitute quite a large group. Most of these are ornamented on the exterior, which was first slipped red and then painted with designs in off-white or beige. The predominant shapes are flaring plates and deep bowls (Pl. 31/1-3); there are relatively few pots and necked jars (Pls. 31/4, 5; 33).

The great majority of the white-on-red painted ornament consists of pendant semicircles (Pls. 32/1, 3; 33/1, 2, 4; 34/2, 4) or arched motives applied in wide brushstrokes (Pls. 32/2; 34/5). Other decorative patterns include a variety of diagonal, spiral, and concentric bands (Pls. 32/2, interior; 33/3; 34/4, int.; 35/1, 3-7).

Objects of marble

During the last two campaigns, five more marble basins similar to those recovered in Structures 4 and 5 during the 1990 season (*Duru 1995*, Pls. 20, 21) were found, this time in Structure 3 and the atelier to the west (Pl. 7/2). The basins from the shrine, as is apparent from the photographs and drawings, display simple 'S'-profiles (Pls. 36/4; 38; 39/4; 40/1-3); some without grips or handles (Pls. 36/3; 39/4; 40/1), some with cylindrical lugs (Pls. 38/1; 40/2) and some with grips in the shape of animal heads (Pls. 38/2; 40/3).

Also from the Shrine Phase, two marble ladles with animal heads were found on the floor of the atelier (Pls. 53/1, 2; 56/2, 3).

Figurines

The single figurine from the Shrine Phase, a female form rendered in off-white marble (Pls. 53/1, 2; 56/1), was recovered from the floor of one of the small southern rooms in Structure 1.

The other figurines and all of the more schematic idols came from the Sanctuary Phase. Upon removing the floor of Sanctuary 1 (excavated in 1990) during the 1992 campaign, we encountered seven more human representations. Four of these were simple rounded shapes with sockets for the insertion of heads (Pl. 46/1-3); another featured a head of bone (Pl. 47/1). One of the figurines represented a rather naturalistically portrayed woman seated on a chair, somewhat short-legged, with impressed decoration over her breasts and back (Pl. 41/5; 51/2). The last of these was the right side of a considerably flat body which -adjoining a fragment recovered from the same area in the 1990 season- may represent a male figure (Pls. 45/3; 51/1).

Eight more human representations, some only fragmentary, were found during the continued excavation of Sanctuary 2 (Squares K-L/5) in the 1991 campaign. Three of these were obviously designed to receive a head fashioned separately.

From Sanctuary 3, discovered in Squares 1/5-6 in 1991, came a total of ten anthropomorphic figures, only one or two of which were damaged, and two heads (Pl. 13/2). In comparison to those from the other two sanctuaries, the mother goddess figurines found here are all decidedly naturalistic. Women are portrayed in three positions: sitting cross-legged (Pls. 41/1, 3, 4; 48/1), seated upon two-legged chairs (Pls. 42/1-3; 48/3-5), and reclining (Pls. 43; 44; 49/3, 4; 50/1, 2). In addition, there are two upright figures which most probably do not represent females (Pls. 45/1, 2; 49/1, 2). The reclining figurines are by far the most interesting of these. In one pose the woman reclines with her legs, folded gently back at the knees, extended to the right (Pls. 43; 49/3; 50/1). A second pose depicts a quite voluptuous woman in a similar position, but supporting a second small upright figure before her breasts in her outstretched arms (Pls. 44; 49/4; 50/2).

Finds of Baked clay

The most significant find from the Shrine Phase in this category is the miniature clay table found intact in the atelier during the final campaign

(Pls. 55, 57; *Duru 1994a*), the second representative of its genre from the excavations (*Duru 1995*, Pls. 37, 39). Of note among the other finds of baked clay are an animal figurine (Pls. 52/4; 56/5), two boot-shaped objects (Pls. 52/2, 3; 56/4; cf. *Duru 1992*, Pls. 20/4; 22/3; *Duru 1995*, Pl. 42/6), plaques (Pls. 52/5; 58/3), ladles (Pl. 56/6), a small flat triangular object with three piercings (Pls. 52/6; 56/7), and hundreds of sling pellets.

From the Sanctuaries Phase came miniature vessels; plaques; spoons and ladles, some with handles in the shape of animals' heads (Pl. 52/7); and sling pellets, both of unbaked and baked clay.

Ground stone

Chisels and axes are the most numerous objects of ground stone. Whereas in the Shrine Phase tools large enough to be called axes appeared alongside the chisels (Pls. 53/6; 58/3), nearly all such tools from the Sanctuaries Phase were quite small (Pl. 53/5).

The chipped stone industry

The finds of chipped stone, including both flint and obsidian, are under study. Two finds of flint from the last season are worthy of mention here: a flake point from the Shrine Phase (Pls. 53/8; 56/9) and a rather intricately worked arrowhead in brown flint from the rubble of the Sanctuaries Phase (Pls. 53/9; 56(10)).

Correlation

In the Early Settlements Period of Höyücek, we must rely on the pottery for correlations and parallels, for we have in hand very little information on the architecture and small finds of these deeper levels. The pottery displays general similarities to that of Level 13 at Kuruçay, a phase which in turn reflects the so-called 'Aceramic Neolithic' period at the site of Hacilar³.

Comparisons between the architecture and finds of Höyücek and those of the neighboring settlements of Kuruçay and Hacilar have been discussed phase by phase in the preliminary reports from the 1989 and 1990 seasons (*Duru 1992*, 559 ff.; *Duru 1995*, 737 ff.). The following architectural considerations are common both to the Shrine Phase at Höyücek and the

³ A discussion of early pottery from the Early Neolithic Period in the north of the Burdur Plain is to be found in *Duru 1989*.

Neolithic strata at Hacılar. Doors were found situated in the longer walls of rectangular structures, with ovens built against the walls opposite. At both sites there were shallow troughs in front of the ovens (*Mellaart 1970*, Pl. XXXIV/a), shallow niches on the interior of the walls, and small chests or spaces for drawers located along the base of the walls (*ibid.* Pls. VII/a, XXIV., XXV/a, XXXIX; fig. 7). The hundreds of clay sling pellets found on the floors of Structures 3 and 1 at Höyücek recall a similar situation at Hacılar (*ibid.* Pl. XXVI/a).

Besides the existence of the intriguing 'fantasy' forms among the pottery of both Höyücek and Hacılar, there are at two vessels from Hacılar VI which parallel the Höyücek vessels with antisplash profiles (Pl. 18/1, 2; cf. *ibid.* 106 with Pl. LVIII/1 and fig. 55/5, 8). Marble basins like those we found are known as well from Neolithic Hacılar (*ibid.* Pls. CXII-CXIV, figs. 159-162).

It is noteworthy, however, that in spite of the parallels mentioned above, scarcely any of the red-on-beige painted ware so typical of the Neolithic and Early Chalcolithic Periods in the north of the plain appeared in the Shrine Phase at Höyücek.

Correlations between the Sanctuaries Phase at Höyücek and the sites of Hacılar and Kuruçay are somewhat weaker. The beige-slipped ware with geometric and more intricate patterns painted in red, characteristic of the latter sites, is absent at Höyücek save for a few miscellaneous examples (*Duru 1992*, 561). Figurines from the Sanctuaries Phase, both those of the 'mother goddess' and those with heads of separate manufacture, find parallels at Hacılar (*Duru 1995*,). Indeed, in the final season of excavation, reclining representations of the 'mother goddess' which quite closely resemble reclining figures from Hacılar were recovered within Sanctuary 3 (Pls. 43; 44; 49/3, 4; 50; 1, 2; cf. *Mellaart 1970*, Pls. 151-154)⁴.

⁴ Our colleague Prof. Dr. Aykut Çınaroğlu was able to point out a very close parallel to one of our 'mother goddess and child' representations. On a visit to New York City he himself noticed the find (pl. 50; 3) in storage at the Metropolitan Museum of Art. Except for the absence of the child before her breast, the New York example is almost an exact copy of one from Höyücek; the pose of the woman, her proportions, and the general modelling work so closely resembles our figurine (Pl. 50/2) that it might even have been produced by the same hand. There can be no doubt that the figure in the Metropolitan Museum is a product of the Burdur area, and I wish here to extend my sincere thanks to Prof. Çınaroğlu for having exposed yet another example of the illicit exportation of antiquities.

Some of the Höyücek figurines display a resemblance to figures from Çukurkent. The seated position, the rendering of the details, and even the size of the marble figurine from the Shine Phase recalls an example from Çukurkent (Pls. 39/3; 41/3; cf. *Bittel 1953*, 37, fig. 2). Another Çukurkent figurine is a close parallel to our reclining figures (*Bilgi 1980*, 2, fig. 1/3; cf. Pl. 33).

The discovery of antisplash rims on certain vessels suggests that Höyücek's horizons were open toward sites in other regions of Anatolia (*Seeher 1987*, Pl. 1/1-8; *Özdoğan 1979*, 113f., Pl. 47/D. 107, D. 129, D. 135, D. 331, D. 117, D. 254; *Özbaşaran 1989*, 78, Pl. 31/Ç.59, Ç.239; for the distribution of such vessels, cf. S. Hood, *Prehistoric Emporio and Ayio Gala*, Oxford, 1981, p. 15, fig. 5/3,5).

Interpretations, conclusions, and chronology

The complete absence of architectural remains in the lowest four meters of stratigraphy excavated in our investigation of the earliest levels at Höyücek suggests that structures within this early settlement consisted of wattle and daub. Excavating within a very small area, we were unable to recover evidence providing us with absolute dates for the beginning and end of this rather lengthy habitation sequence. Considering, however, the C14 dates of 6,400 to 6,300 B.C. for the Shrine Phase (cf. P. 478), it would appear that this Early Settlements Phase at Höyücek -which probably lasted some four or five hundred years- must have begun at the very beginning of the seventh millennium B.C., representative of the Early Neolithic Period.

The architectural remains at the mound come primarily from the Shrine Phase. Excavation during the final campaign unfortunately failed to shed any more light on the scanty architectural remnants from the Sanctuary Phase, the latest evidence of prehistoric activity at the site. The short segments of wall in Sanctuaries 1 and 2 present no logical scheme, and there is no evidence whatsoever for any wall enclosing Sanctuary 3. The striking feature of this phase are the floors paving certain areas and the concentration of idols and mother goddess figurines found upon them. It seems that these must have served as the focus of some religious rites; the figures and various artifacts of clay and bone might have been employed in ceremonies conducted here, many perhaps as votive offerings.

The small finds from the three sanctuaries discovered in the 1990 and 1991 campaigns proved to vary considerably from one sanctuary to the next, both in form and character. Whereas mother goddess figures with impressed decoration (Pl. 41/4; *Duru 1995*, Pl. 26/1, 2), flat idols represented in an upright position (Pl. 45/3; *Duru 1995*, Pl. 31/1), and variously shaped small clay objects were typical of Sanctuary 1, idols with heads of bone (Pls. 47/1, 2, 4, 5; *Duru 1995*, Pls. 30; 41/1-3) characterized Sanctuary 2, and reclining mother goddesses were representative of Sanctuary 3. Only very rarely were any of these types found in the other sanctuaries respectively. Chisels and axes, 23 of which were recovered in various sizes from Sanctuary 2, were not represented even by a single example in Sanctuaries 1 or 3. Also totally absent from Sanctuary 3 were the seated figurines and the idols with simple rounded bodies, both found in the other two sanctuaries. Such distinctions between the finds in the different areas, as well as the character of the finds in general, provide us with a clue to activities at the site. These suggest that, rather than a residential area, this was a location for spiritual contemplation, an open-air sanctuary. The pious from throughout the plain of Bucak -or perhaps from the wider surroundings- may have made pilgrimages or regular visits to the site here, where some sort of religious observances then took place. The differences in the votives, the idols and figurines, and other small finds including some complete vessels probably employed in the ceremonies and left behind by the worshippers, might reflect only their various geographical origins. They might be an indication of changing times as well, for we cannot estimate the frequency of such prehistoric religious services.

Should we presume to accept such a hypothetical situation, it is only likely that this type of religious practice harked back to earlier phases. Such worship probably had its roots in the faith of the Shrine Phase. We might suppose that the neighboring populations treasured some recollection, if not the actual memory of the earlier rites and regarded the mound of Höyücek as a locality revered as a sanctuary of the mother goddess.

It would be most difficult to estimate the length of these two phases and the time which elapsed between them. One should not overestimate the mnemonics of religious rites. The Sanctuaries Phase cannot have been too far removed from the Shrine Phase; to place it within the Late Neolithic Period would seem reasonable.

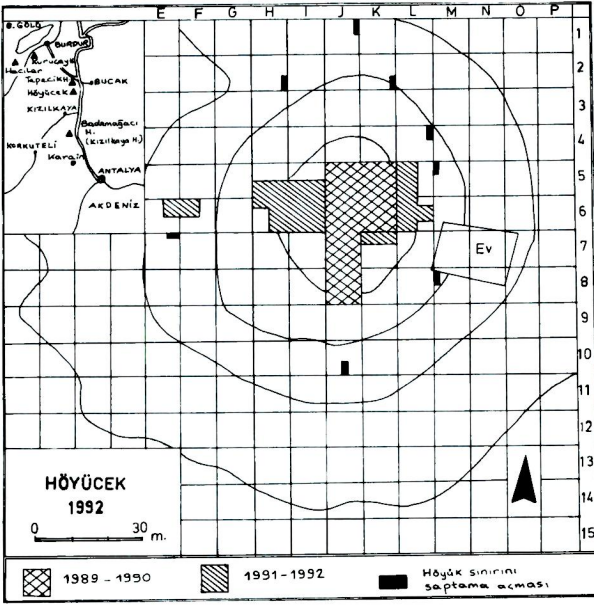
When one considers the correlations existing between the Shrine Phase at Höyücek and its neighbors in the northern part of the Burdur Plain, such as the sites of Hacılar and Kuruçay, architectural and ceramic considerations suggest that these cultures, although separate, were nevertheless quite cognizant of one another. The C14 dates of carbonized samples from the Shrine Phase at Höyücek are as follows (cf. *P. 478*),

7349 ± 38 B.P.	6186 ± 6122 B.C.
7551 ± 46 B.P.	6425 ± 6356 B.C.
7556 ± 45 B.P.	6427 ± 6358 S.C.

If we accept these dates, the whole of the Shrine Phase then belongs to the second half of the seventh millennium B.C., and this period at Höyücek should be dated earlier than Hacılar VI. Should we interpret the presence of the 'fantasy forms' appearing among the ceramics only here in the south of the plain and the absence of the typical 'Hacılar painted wares' of the north as local traits or as chronological distinctions? Other questions which come to mind bear on the terminology employed here. Could the 'Late Neolithic' levels of Hacılar perhaps be reconsidered as belonging to a relatively earlier phase of the Neolithic, or would it be more appropriate to ascribe the Shrine Phase at Höyücek to a Middle Neolithic Period?

Among the unstratified pottery from the trench on the eastern skirts of the mound, there are various wares dating from Neolithic to Early Chalcolithic times. Some of these display a similarity to Late Neolithic wares from Kuruçay, others to the Early Chalcolithic painted wares known from Kuruçay and Hacılar. The Höyücek examples, however, are distinct in their rendering of the patterns in white on red, a technique unusual in this area (indeed within the whole of western Anatolia). Until such wares have been found in stratigraphic sequence⁵, any attempt to assign them to a specific period would be unwise. These and other relevant questions remain to be discussed by Dr. Gülsün Umurtak, who is undertaking the publication of the Höyücek pottery.

⁵ Ware of this sort has appeared in the new excavations we began in 1993 at Bademağacı Höyüğü (earlier known as Kızılkaya). Its appearance in strata below certain Early Chalcolithic levels has been attested. Until the ware can be assigned to an architectural phase, we are hesitant to draw any conclusions. Continued investigation at the site, however, is certain to elucidate the issue.



Levha 1/1 - Höyücek ve kazı alanlarının topografik planı.



Levha 1/2 - Kazı alanı.

Refik Duru



Levha 2/1 - Kazı alanı (Kuzeyden).



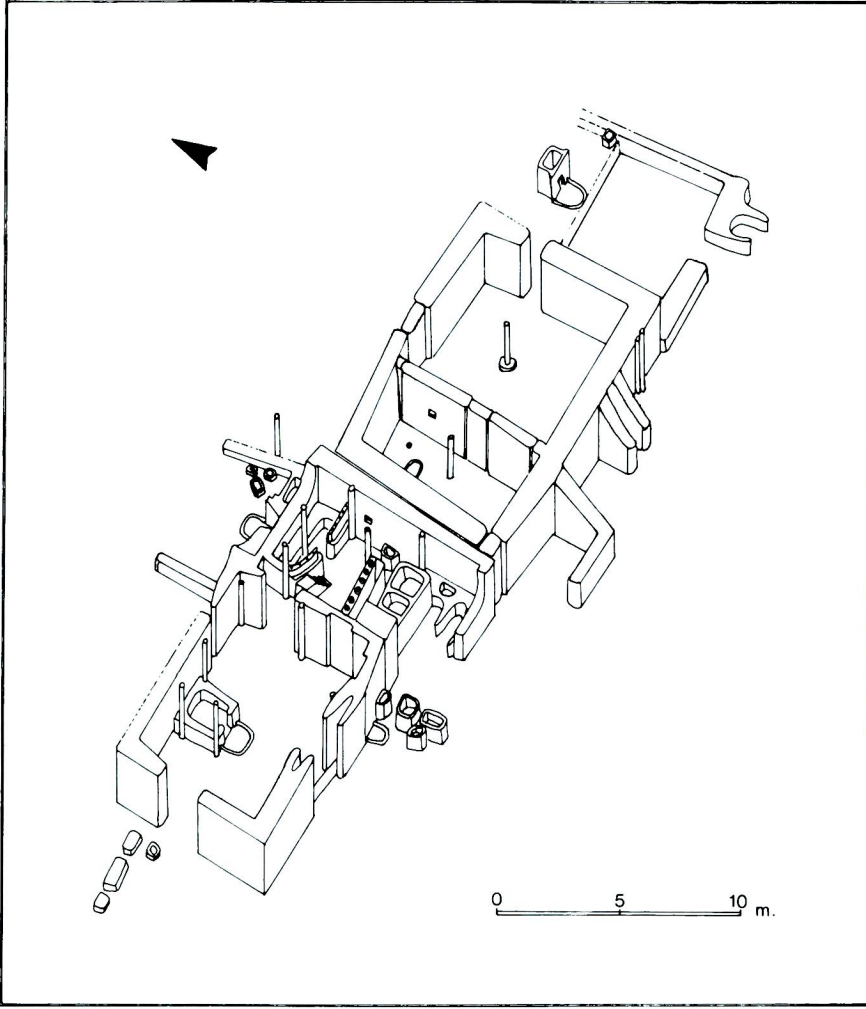
Levha 2/2 - Kazı alanının batı ucu ve Batı Açması.



Levha 3/1 - Derinlik açması (A çukuru).



Levha 3/2 - Derinlik açmasının güney kesiti.



Levha 5 - TD yapılarının isometrik çizimi.

Refik Duru



Levha 6/1 - TD'nin 1. yapısı (Güneyden).



Levha 6/2 - Aynı yapının kapısı.



Levha 7/1 - TD'nin 3. yapısı.

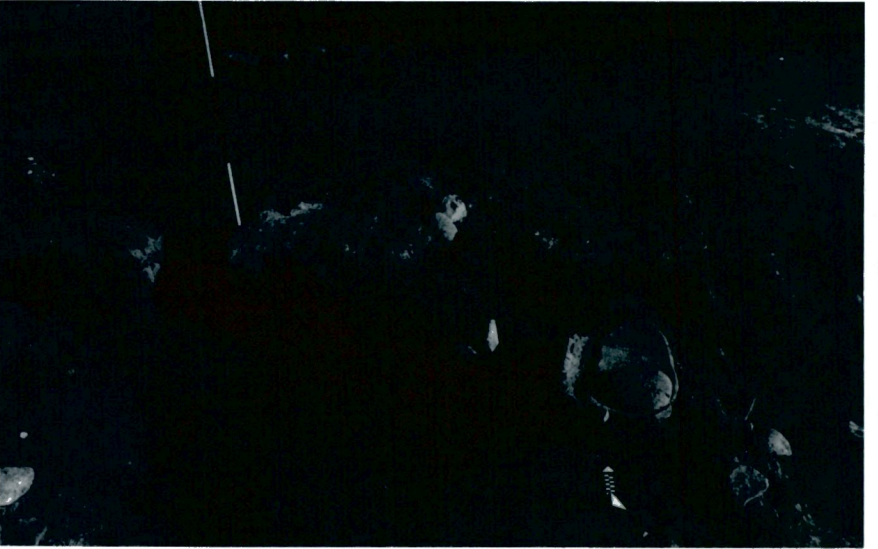


Levha 7/2 - Aynı yapı tabanında bulunan mermer çanaklar.

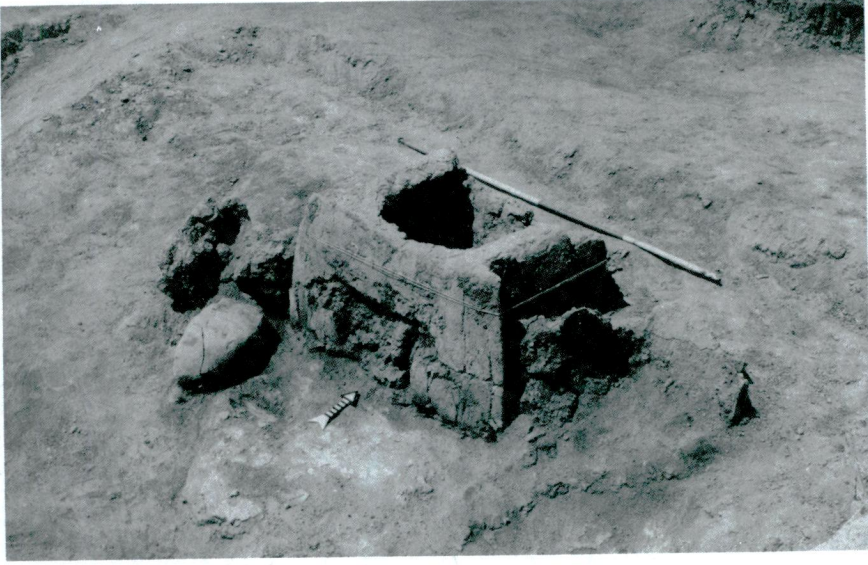
Refik Duru



Levha 8/1 - 3. yapının batısındaki işlik yeri.



Levha 8/2 - Aynı işlik. Sağ kenarda el değirmeni.

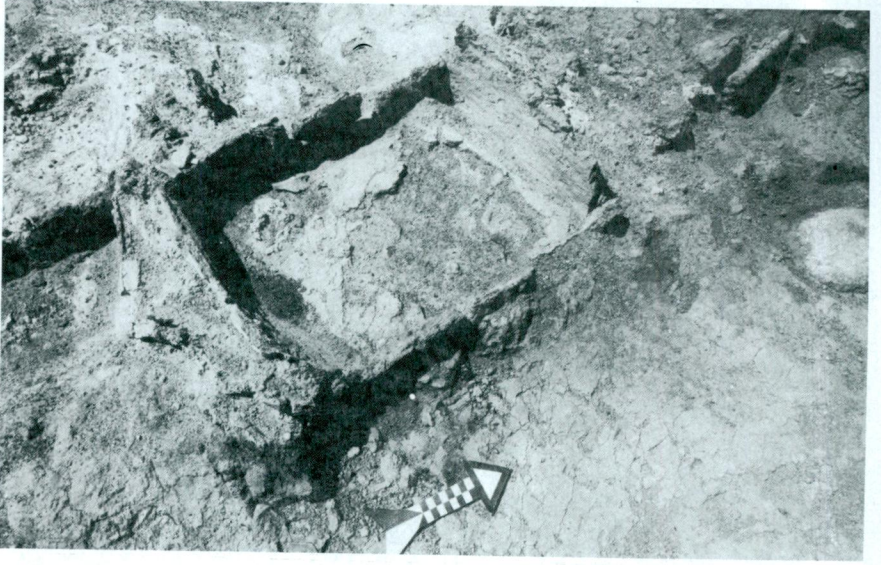


Levha 9/1 - 1. ev içindeki fırın.

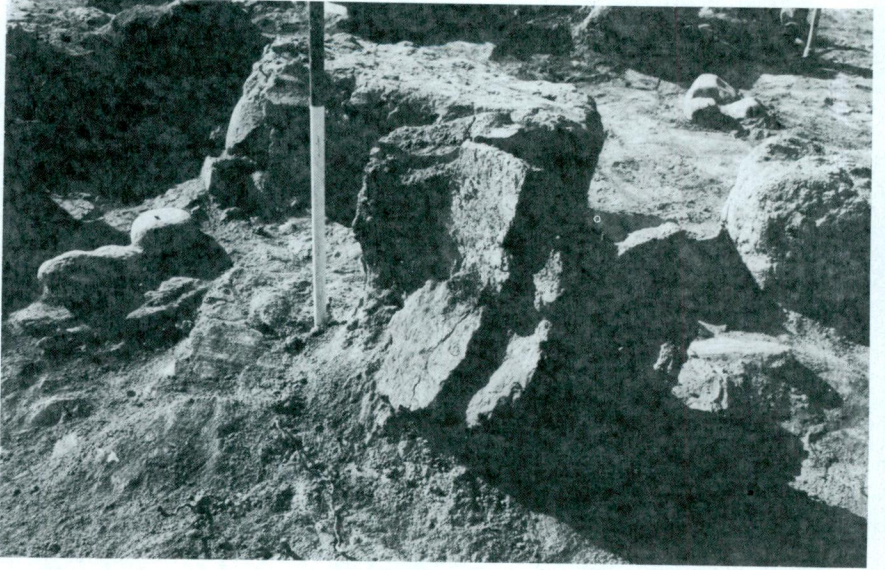


Levha 9/2 - 3. ev içindeki fırın.

Refik Duru

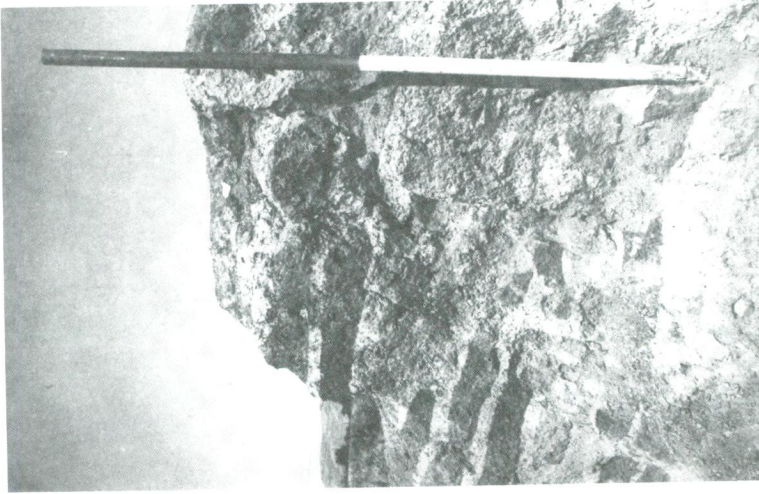


Levha 10/1 - 3. evin gney bitiřindeki kil kenarlı silo.

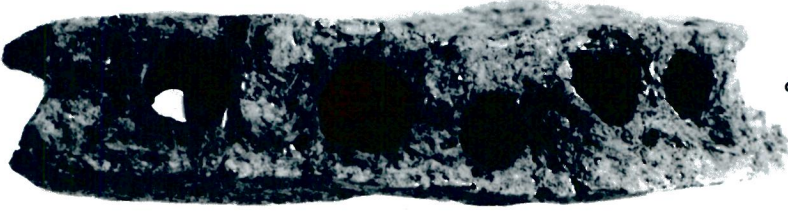


Levha 10/2 - İřlikteki kil kenarlı silo ve kutular.

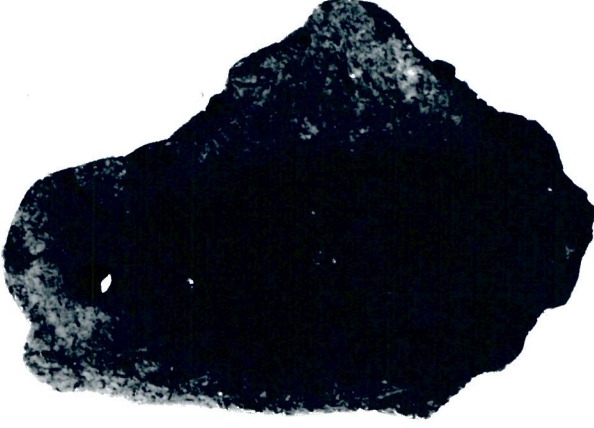
Refik Duru



Levha 11/1 - 5. evin kuzey duvarı. Alt kesimi dikdörtgen prizması kerpiçlerle örülmüş duvarların son iki sırası kaplumbağa sırtlı kerpiçler.

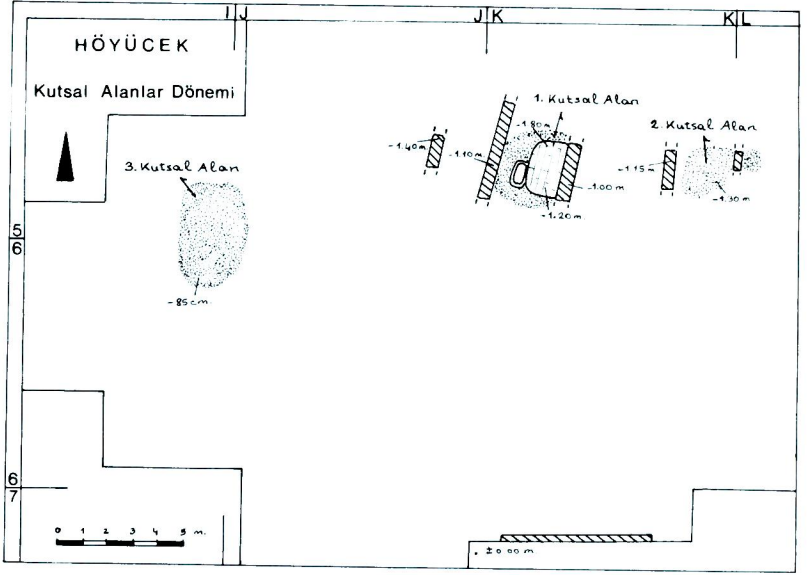


Levha 11/2 - Kıl kenarlı silolardan birinin kesiti.

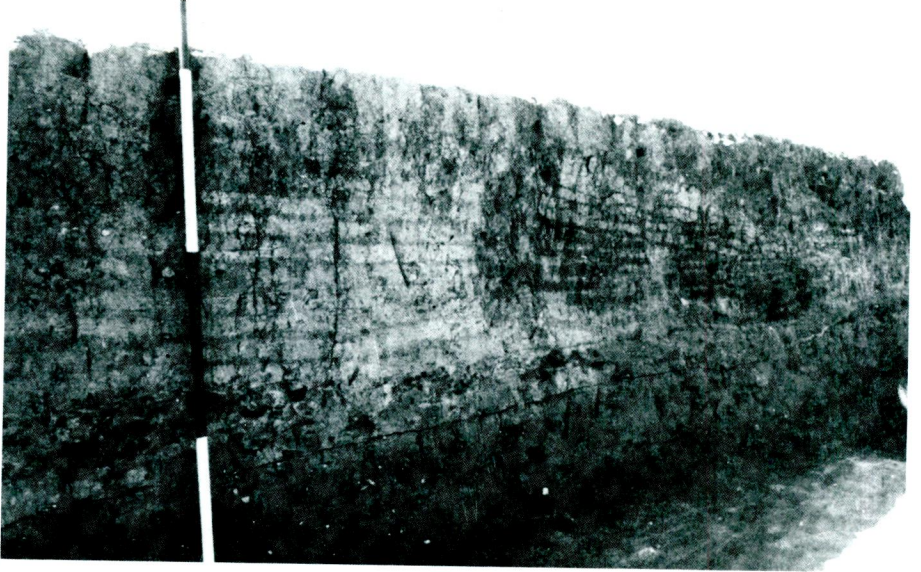


Levha 11/3 - Silolardan birinin kenar levhaları. Üst köşede levhaları birleştirmek için açılan delik.

Refik Duru



Levha 12/1 - Kutsal Alanlar Dönemi (KAD) mimarlık kalıntıları (İçî beyaz bırakılmış duvarlar TD yapılarıdır).



Levha 12/2 - Tranşenin güney kenarında izlenen duvar (KAD).



Levha 13/1 - 3. Kutsal Alan.

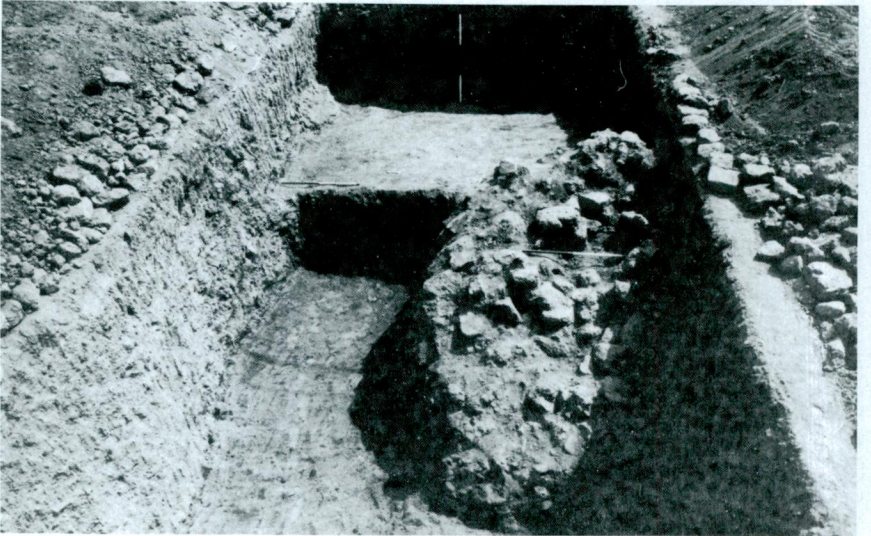


Levha 13/2 - 3. Kutsal alanın taban sıvaları ve *in-situ* figürinler.

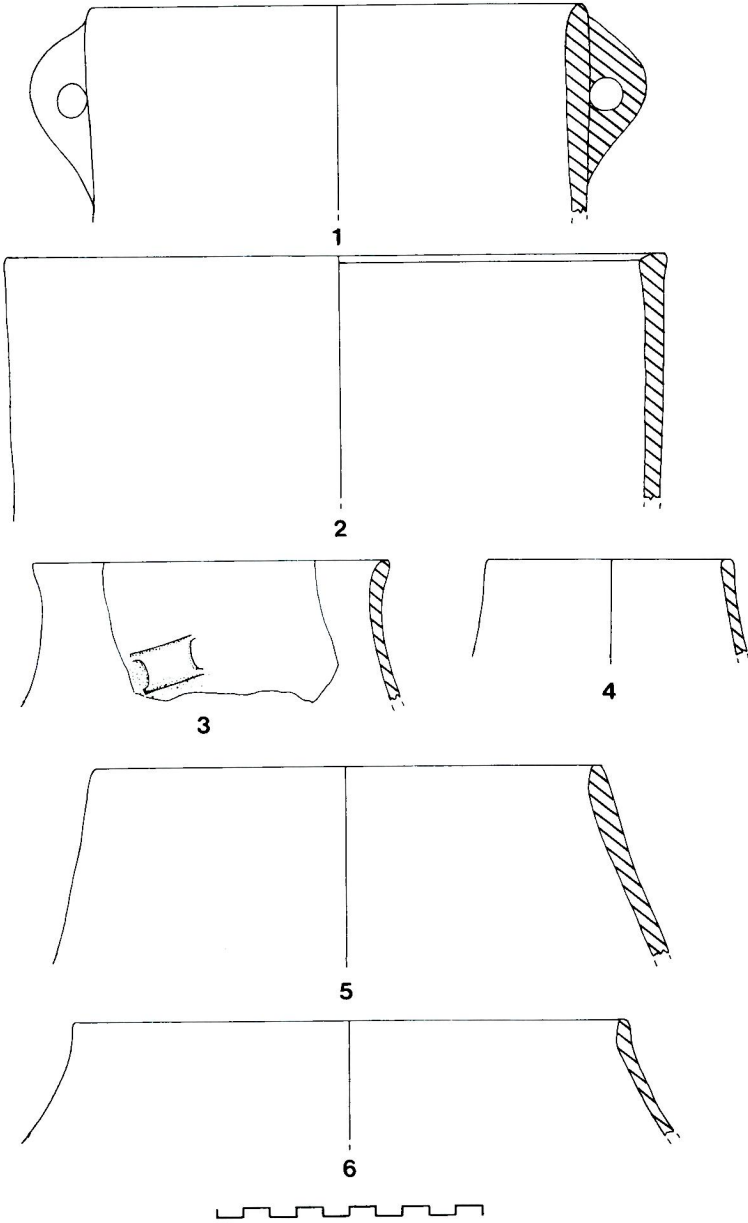
Refik Duru



Levha 14/1 - Batı çukurundaki atık tuğla yığınları.

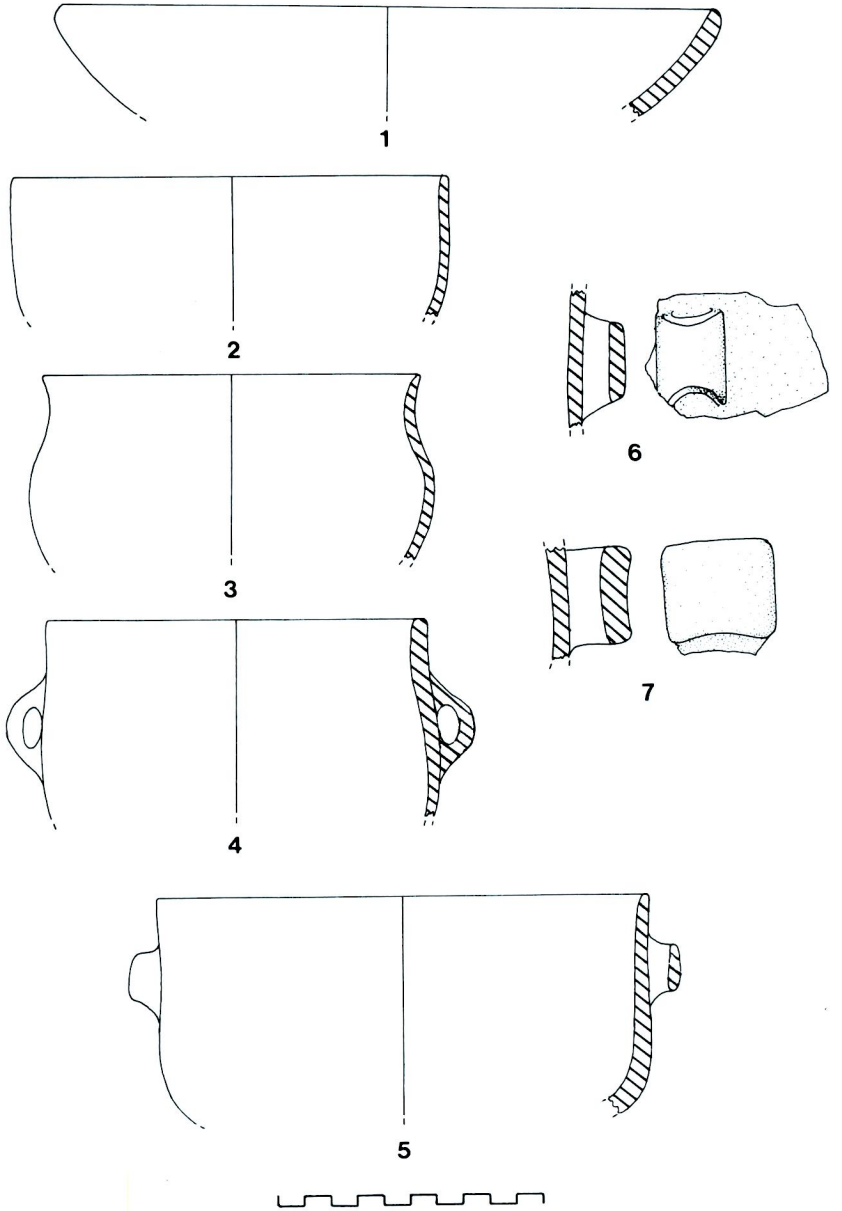


Levha 14/2 - Aynı kazı alanı.

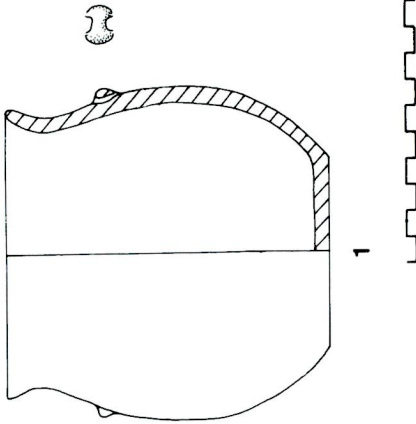
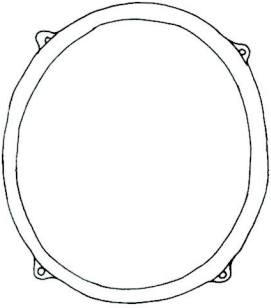
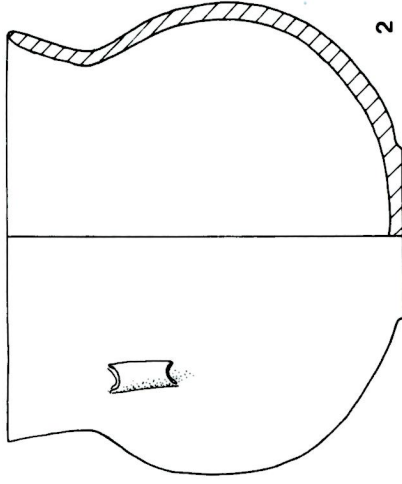
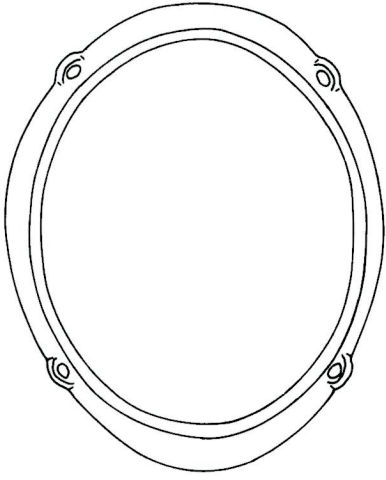


Levha 15 - Eski Yerleşmeler Dönemi çanak çömleğinden bazı örnekler.

Refik Duru

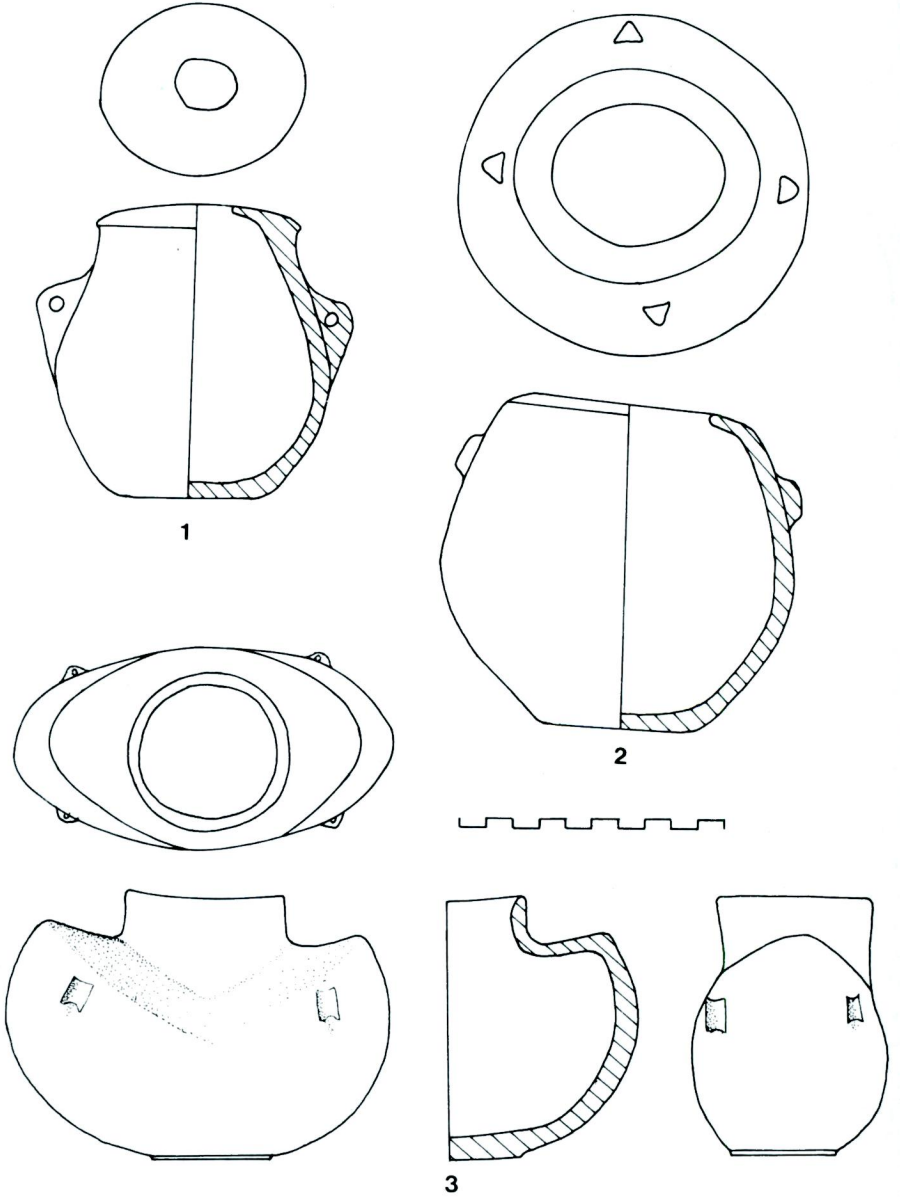


Levha 16 - TD çanak çömleğinden bazıları.

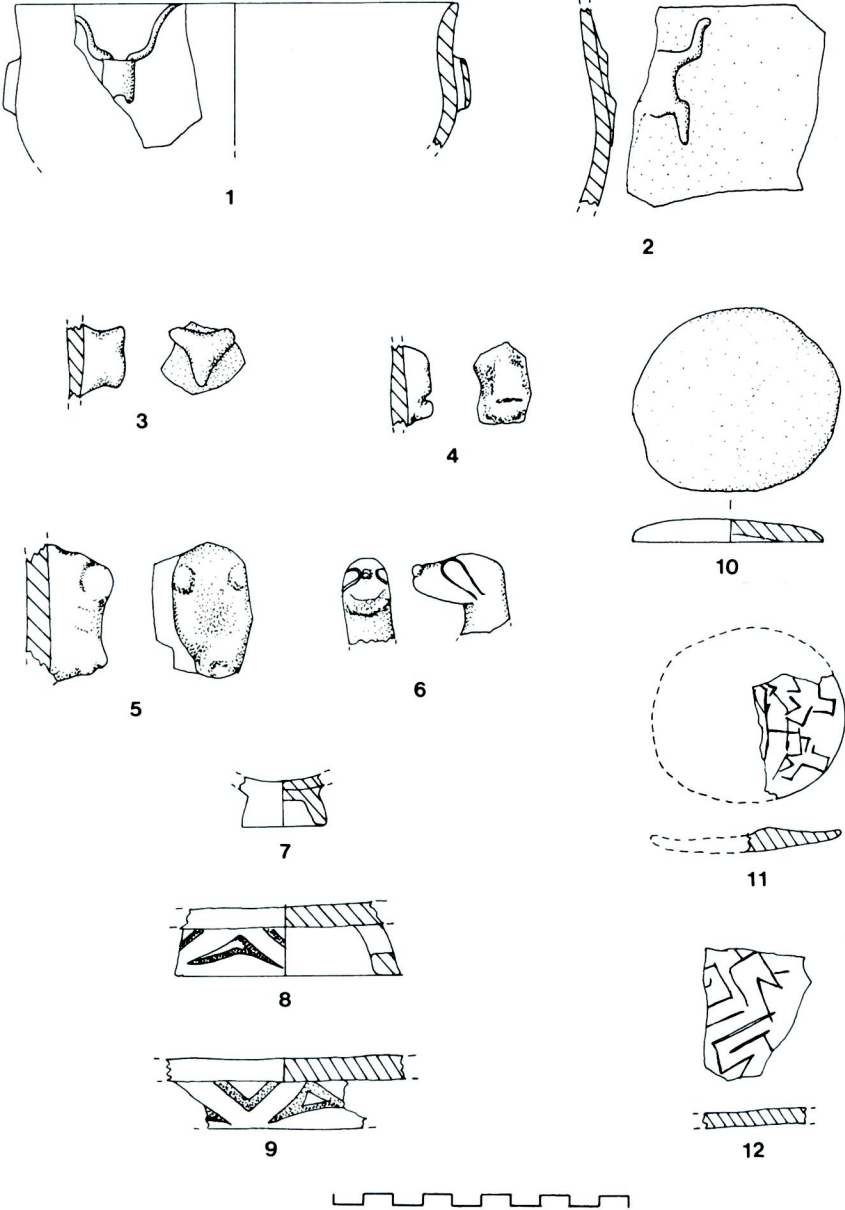


Levha 17 - TD'nin tüm kaplarından.

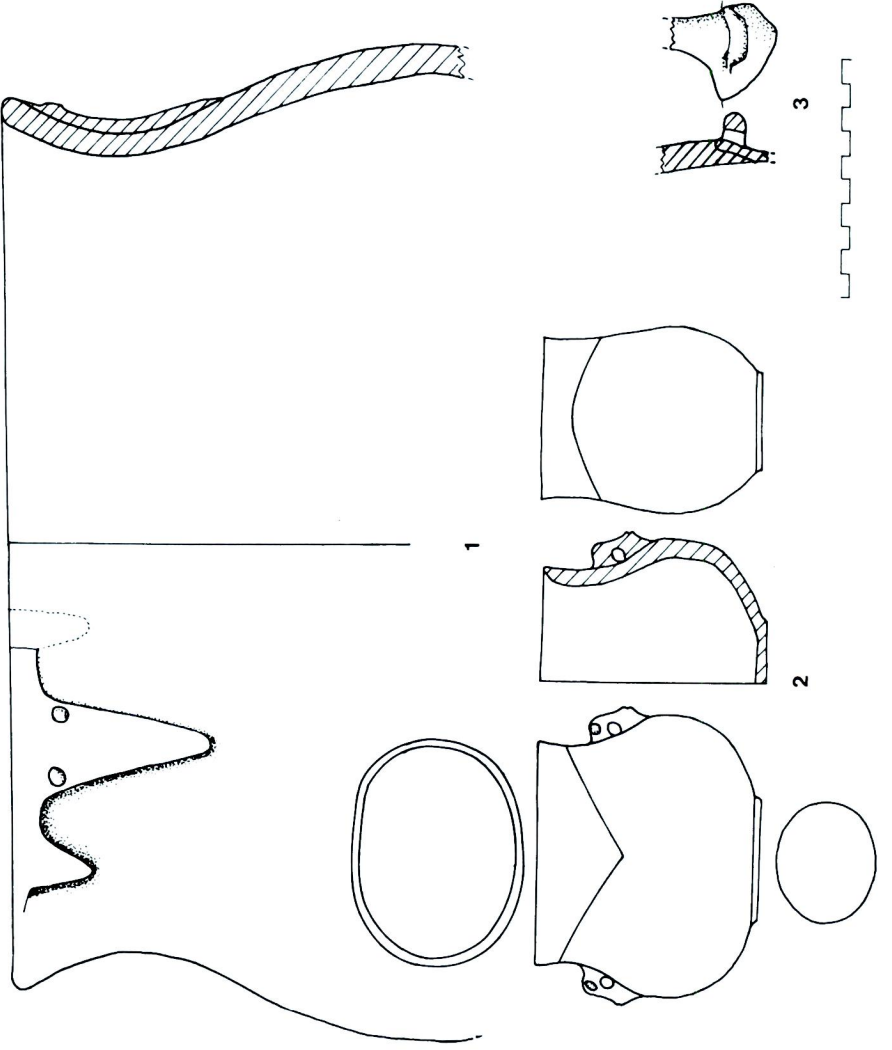
Refik Duru

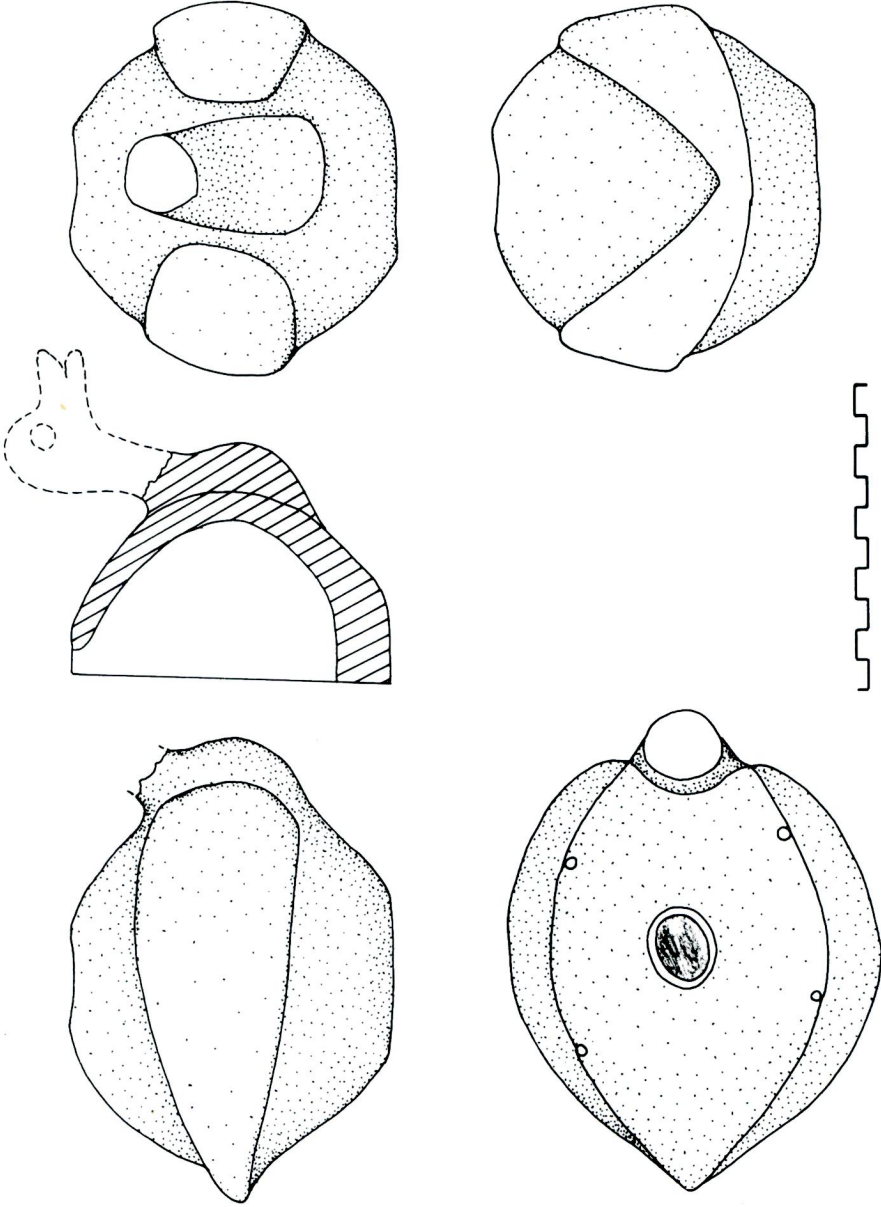


Levha 18 - TD'nin fantazi biçimli kapları.



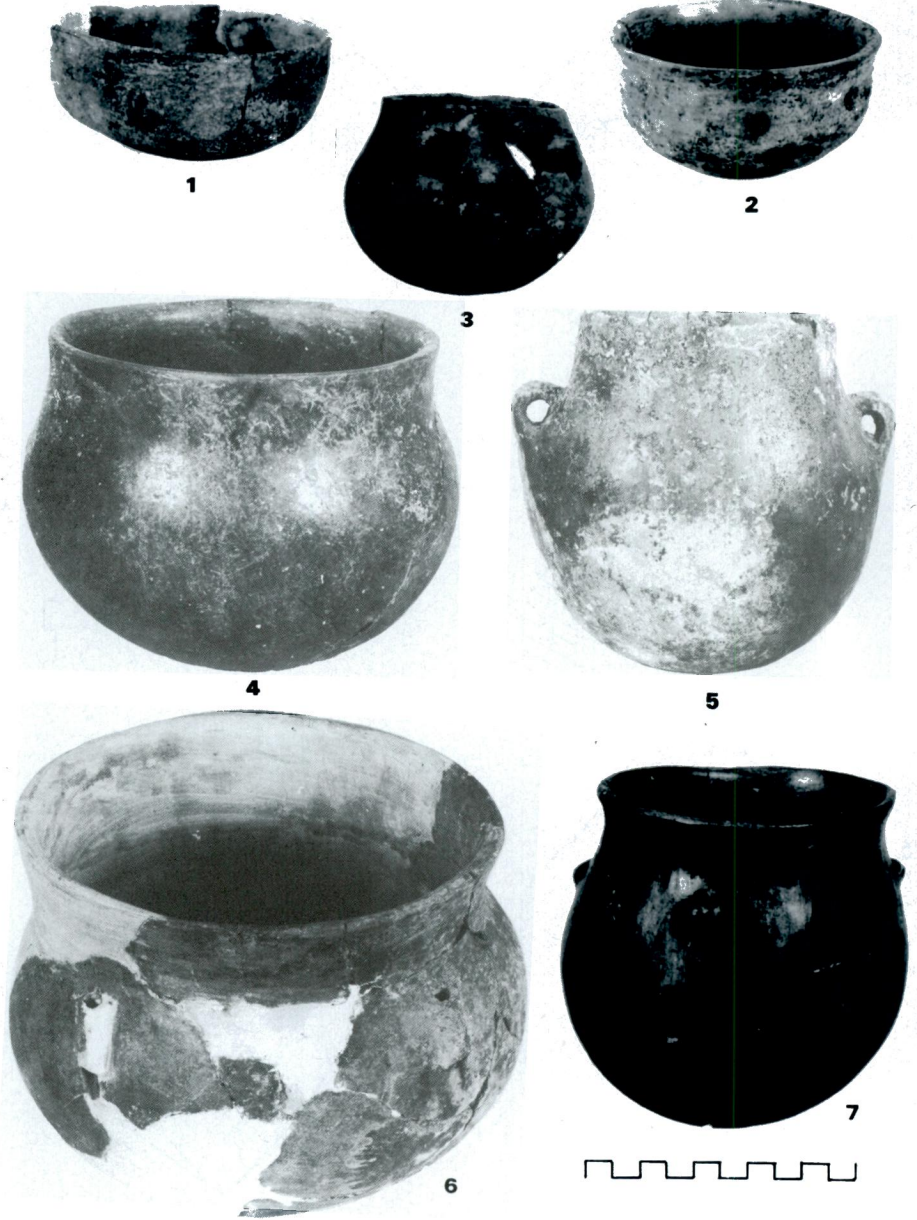
Levha 19 - TD'nin kabartma süslemeli parçaları (1-2), hayvan başı biçimli tutamakları (3-6), kenarı delikli halka dipleri (8-9) ve kap kapatmalarına ait (10-12) parçalar.



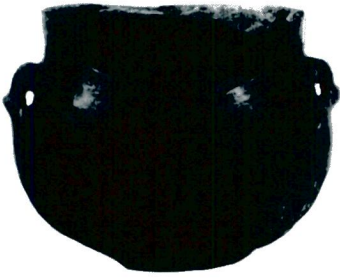


Levha 21 - TD'nin ördek veya kuş şekilli kabi.

Refik Duru



Levha 22 - TD'nin tüm kaplarından bazıları.



1



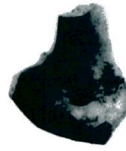
2



3



4



5



Levha 23 - TD'nin fantazi biçimli kapları (1-4) ve sepet kulplu bir kaba ait parça (5).

Refik Duru



1



2



3



Levha 24 - TD'nin ie donuk dudaklı kapları (anti-splash mouth) ve huni biimli para (3).



1



2



3



4



5

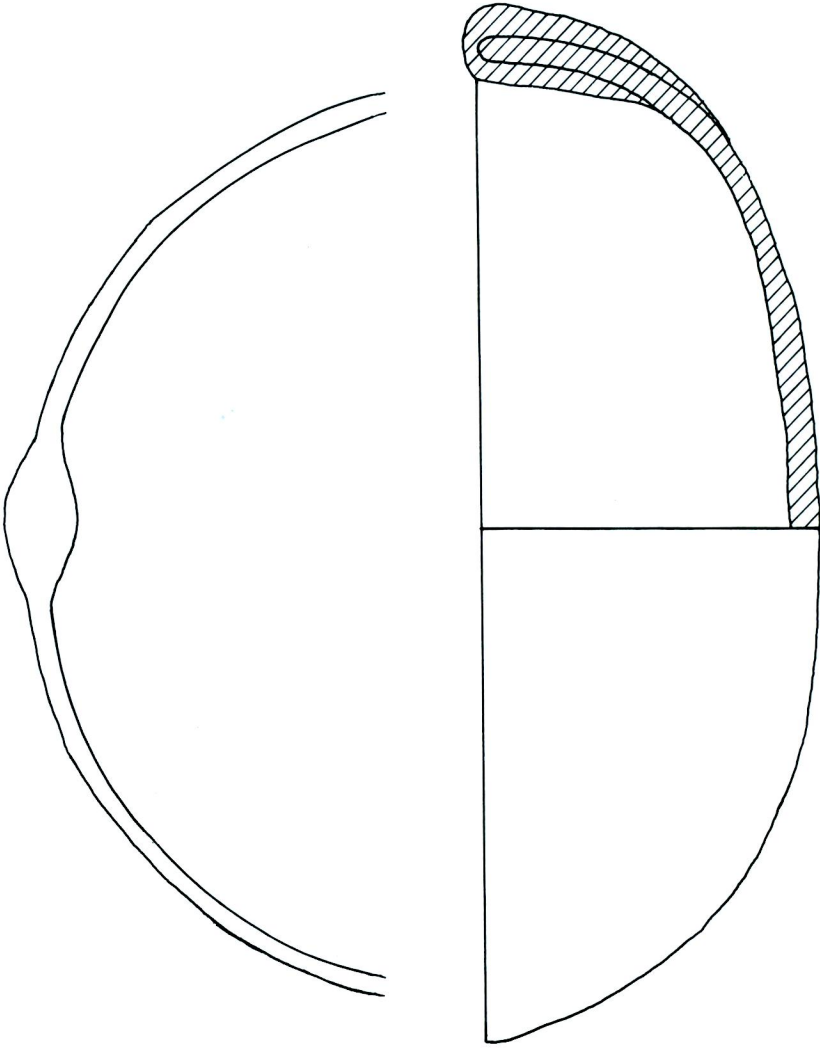


6

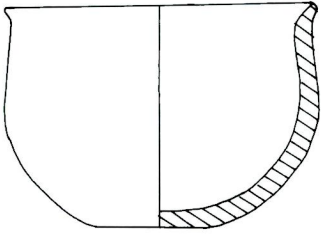


Levha 25 - TD'nin süslemeli parçalarından bazıları.

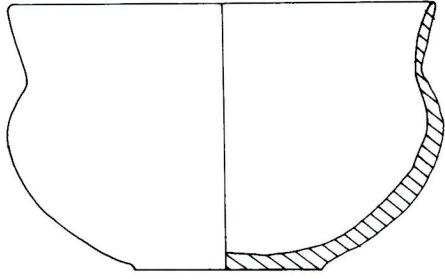
Refik Duru



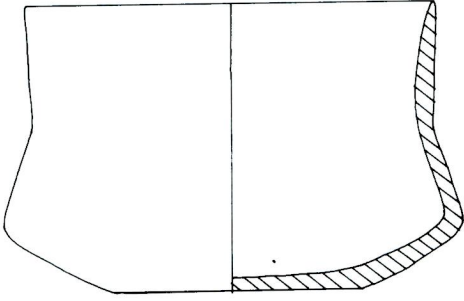
Levha 26 - KAD'dan bir tabak.



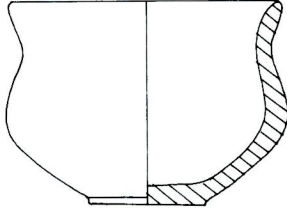
1



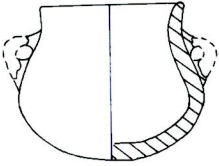
2



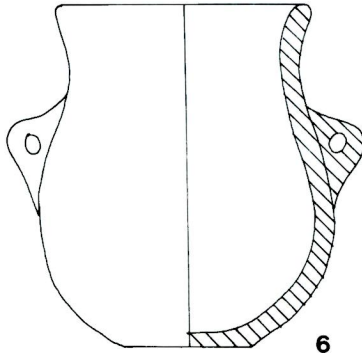
3



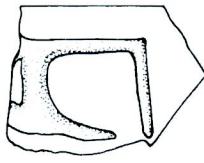
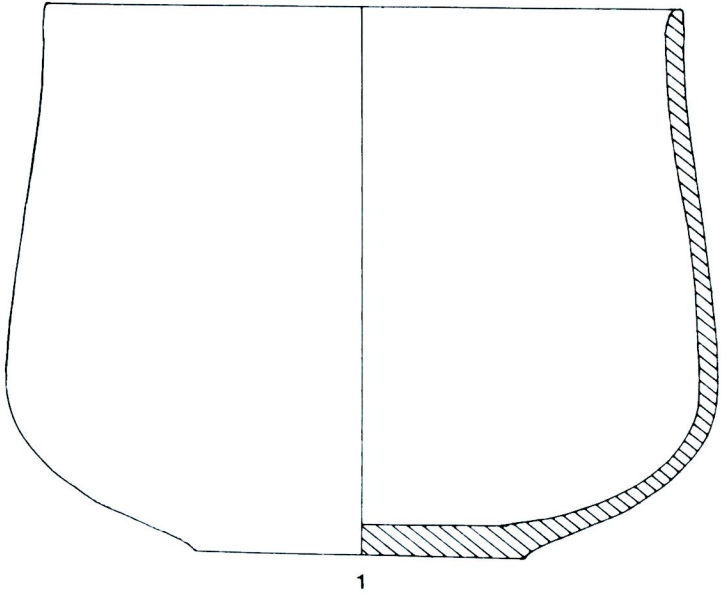
4



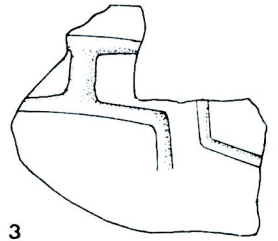
5



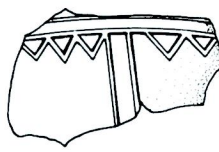
6



2



3



4

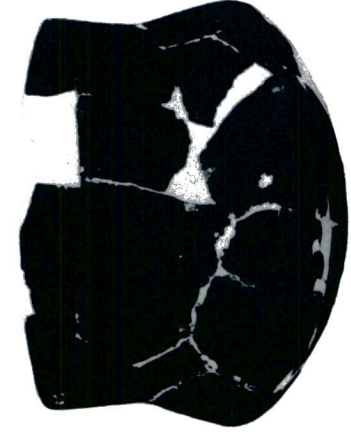


5

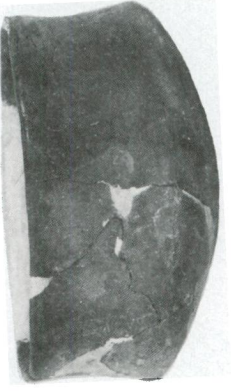


Levha 28 - KAD'dan derin çanak ve süslemeli parçalar (2-5).

Refik Duru



1



2



4

3



5



6



Levha 29 - KAD'dan tüm kaplar.



1



2



3



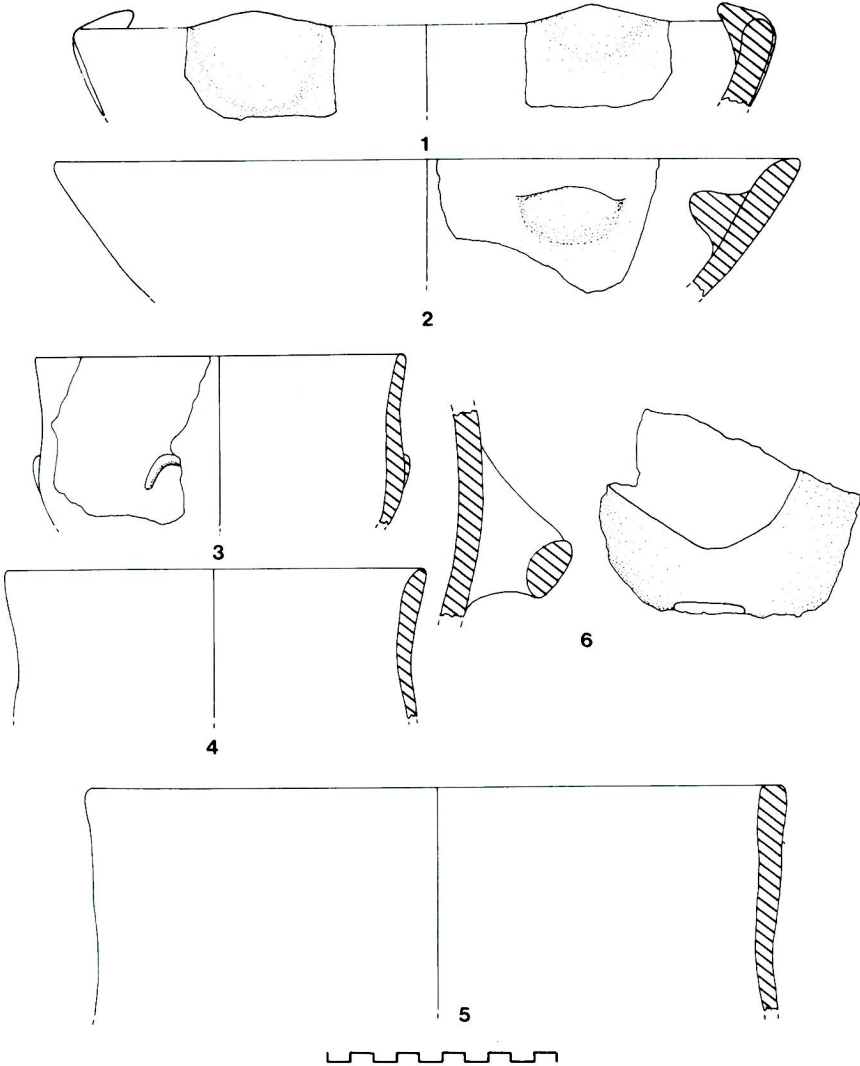
4



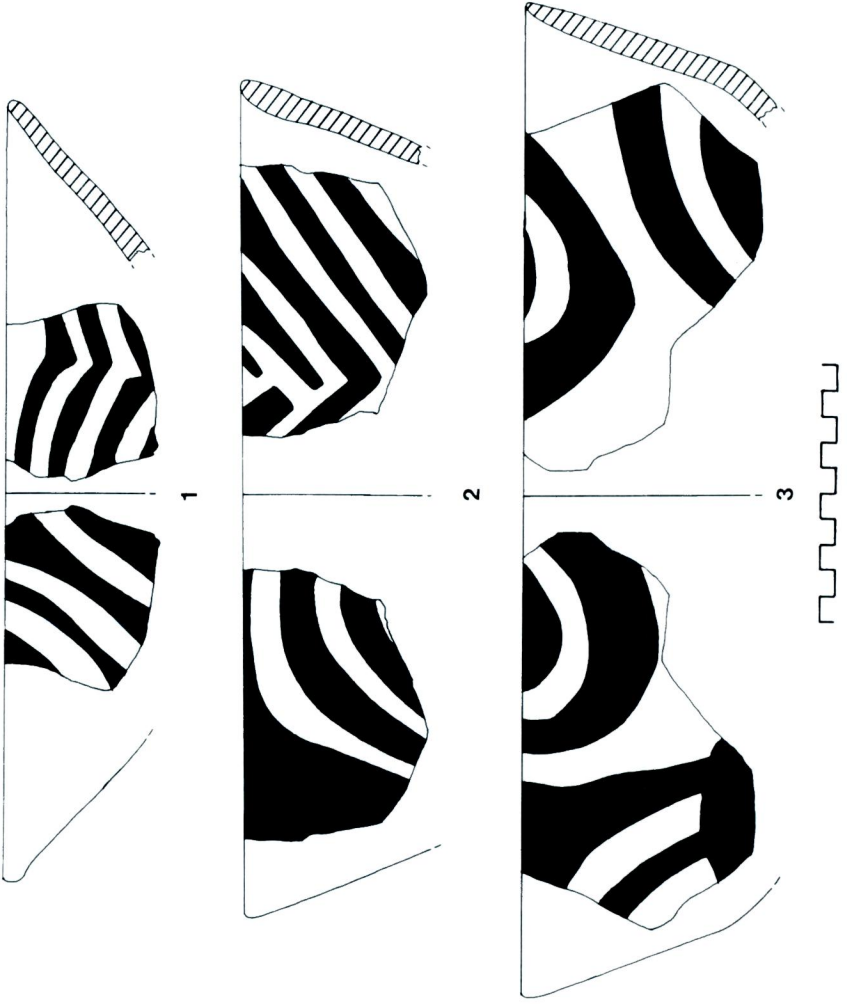
5



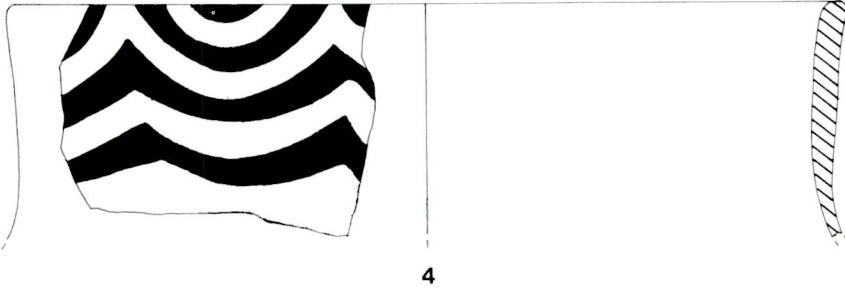
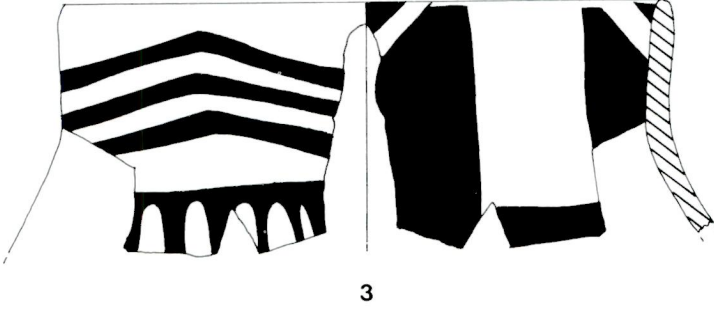
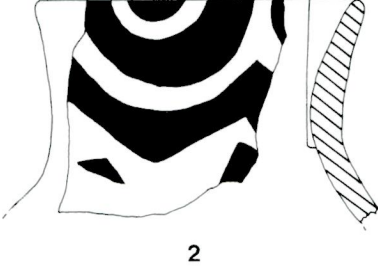
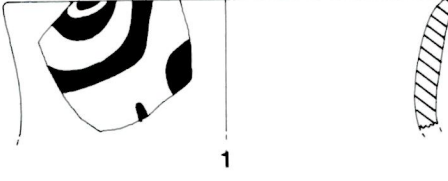
Levha 30 - KAD'dan tüm kaplar ve süslemeli parçalar.



Levha 31 - Batı Çukuru'ndan bazı çanak çömlek parçaları.



Levha 32 - Batı Çukuru'nun beyaz üzerine kırmızı boyalı parçaları.

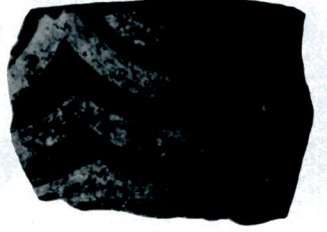


Levha 33 - Batu Çukuru boyalılarında bazıları.

Refik Duru



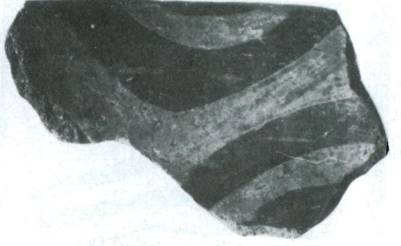
1



2



3



4



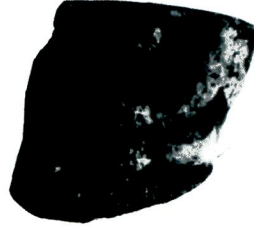
5



Levha 34 - Batı ukuru boyalıları.



1



2



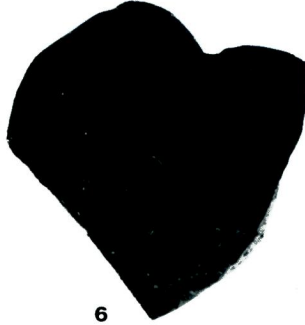
3



4



5



6

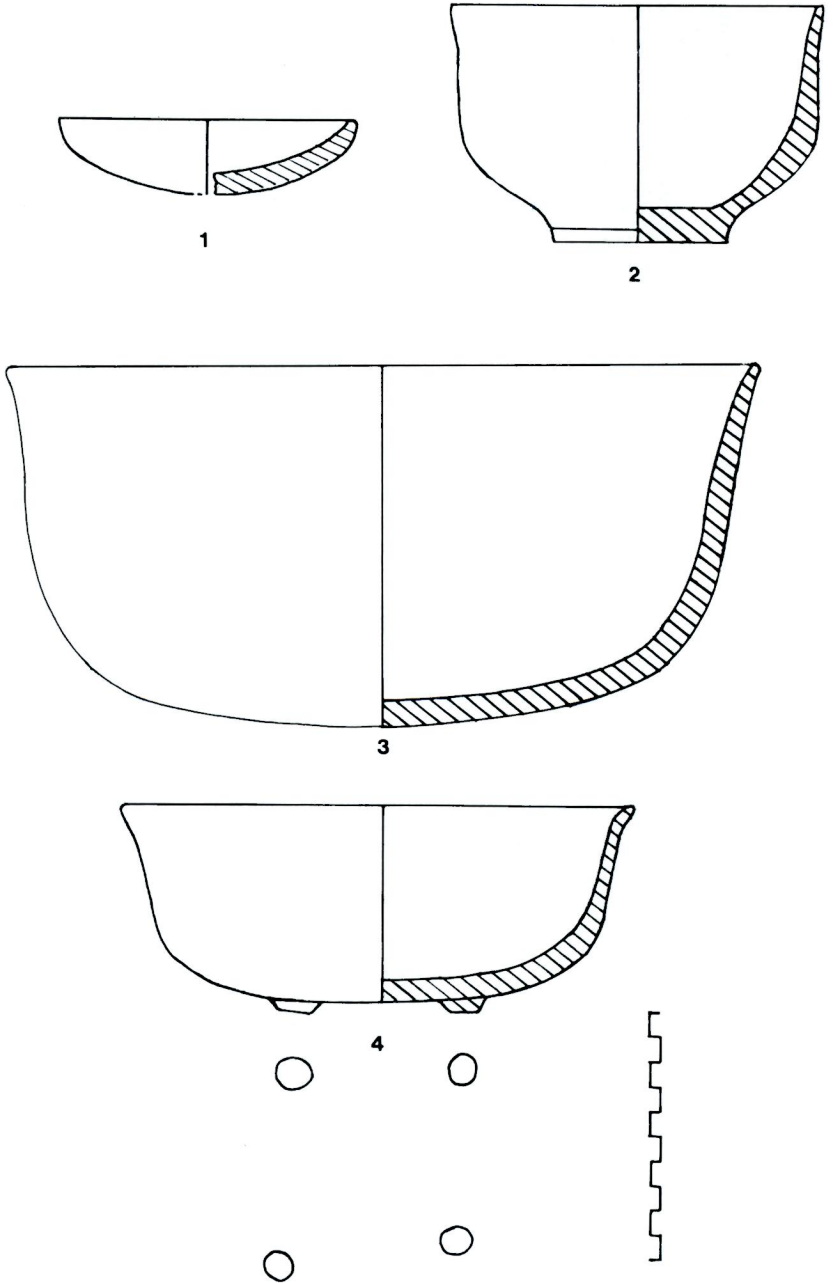


7

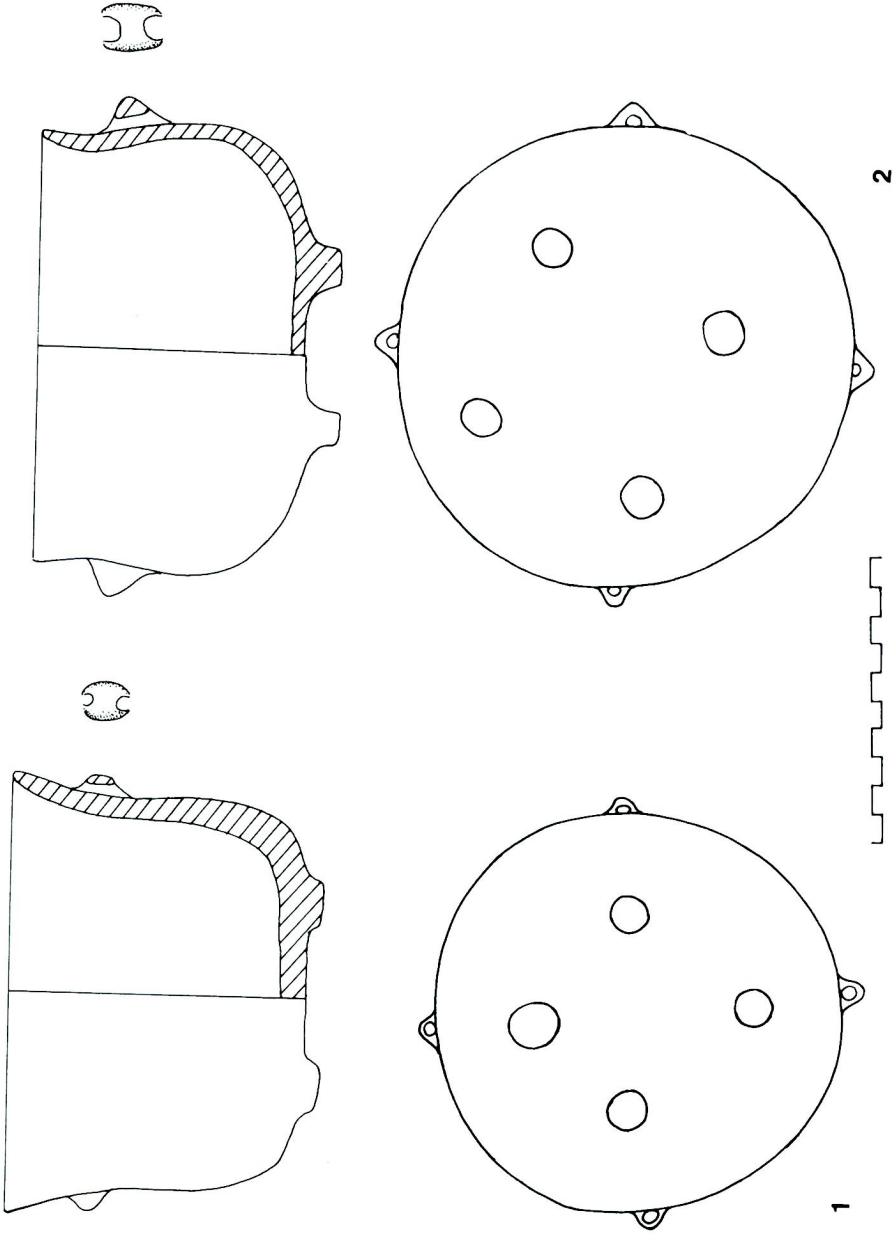


Levha 35 - Batu ukuru boyalıları.

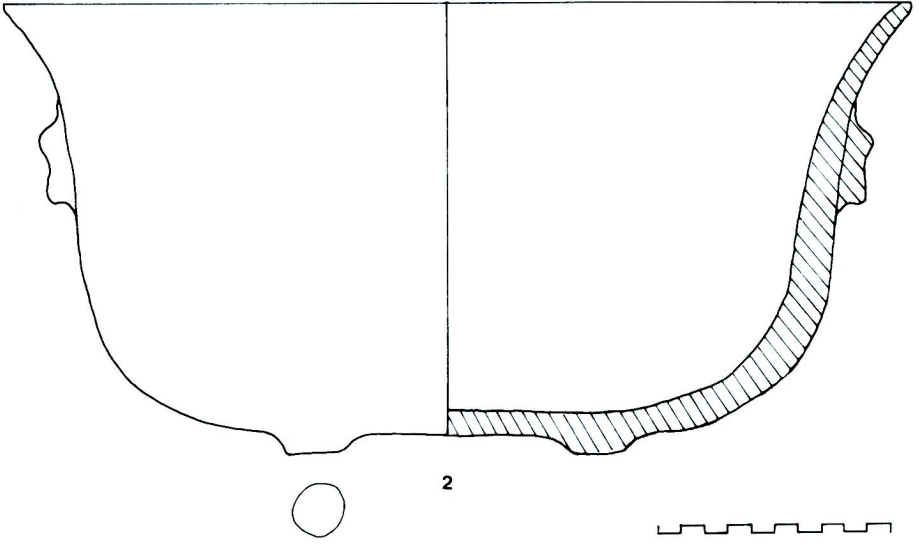
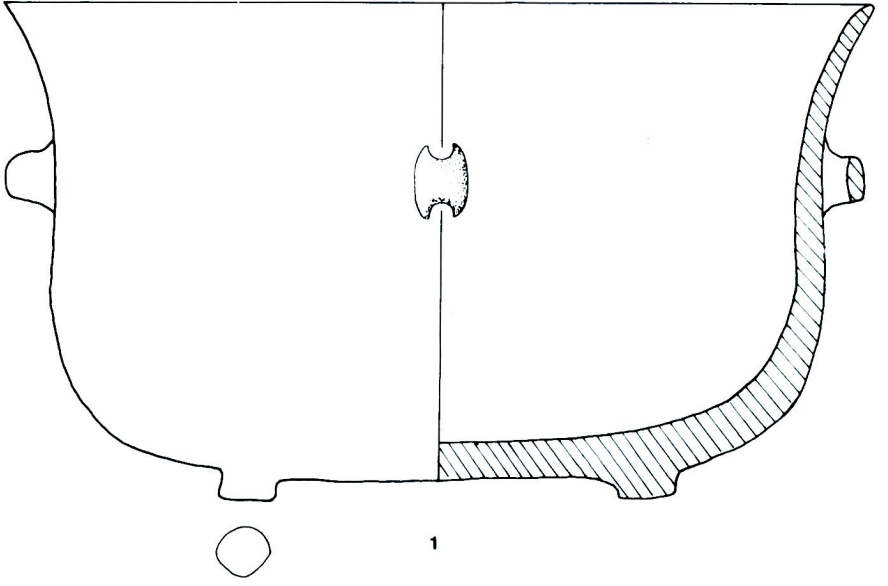
Refik Duru



Levha 36 - TD'nin mermer çanakları.



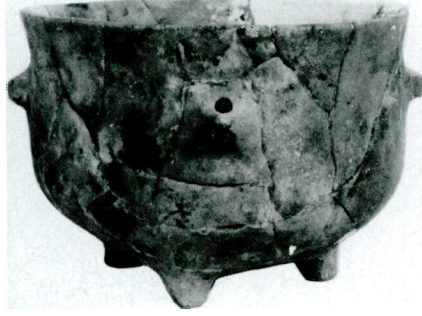
Refik Duru



Levha 38 - TD'nin mermer çanakları.



1



2



3



4



Levha 39 - TD'nin mermer çanakları.

Refik Duru



1

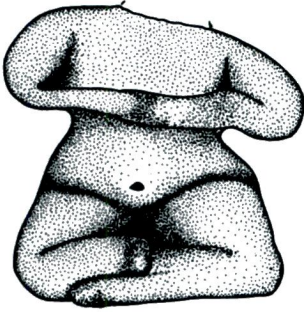


2

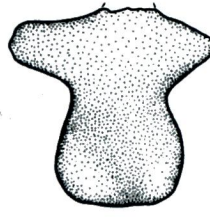
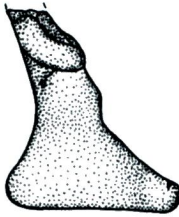
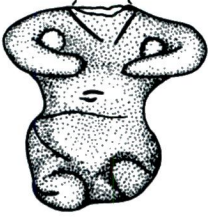


3

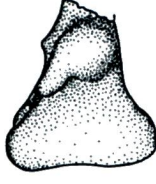
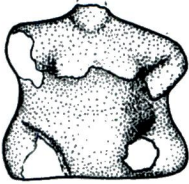
Levha 40 - TD'nin mermer çanakları.



1

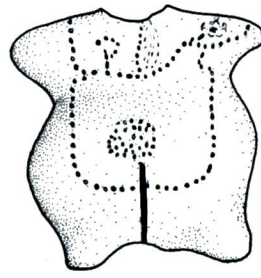
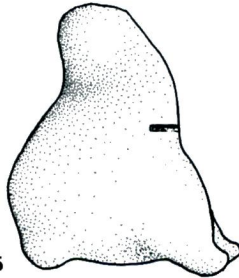
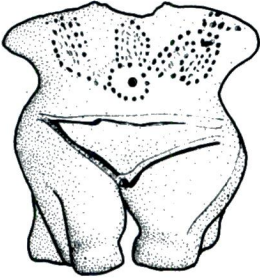


2



3

4

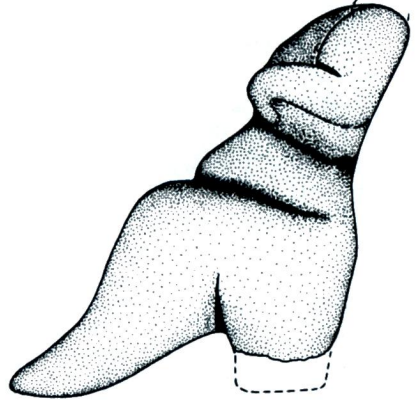
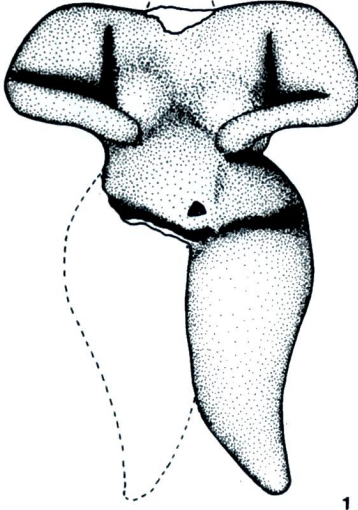


5

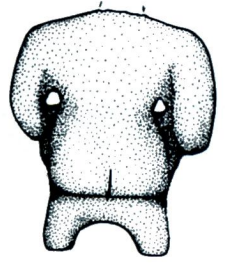
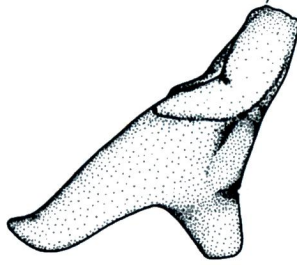
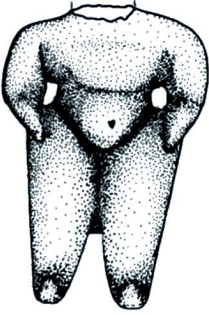


Levha 41 - KAD'ın kil figürinlerinden.

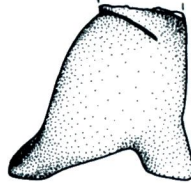
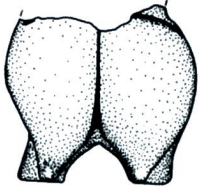
Refik Duru



1



2

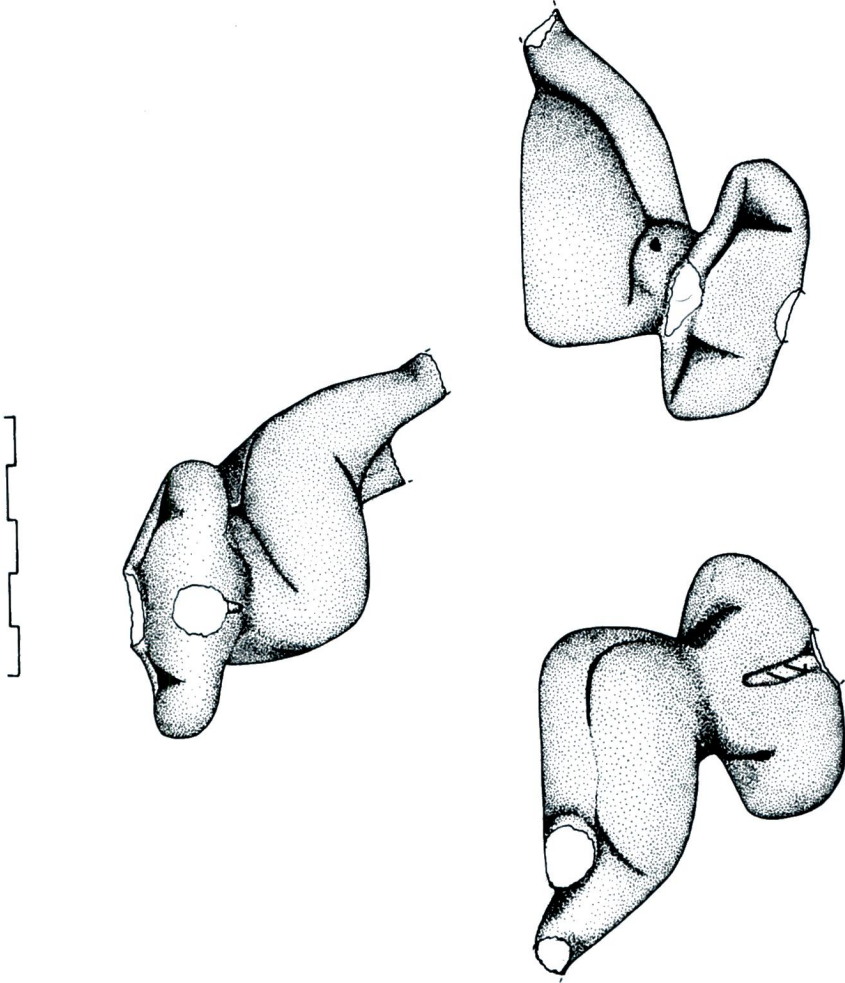


3



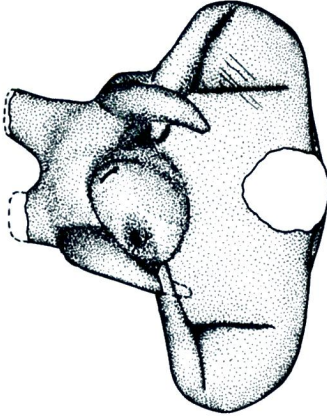
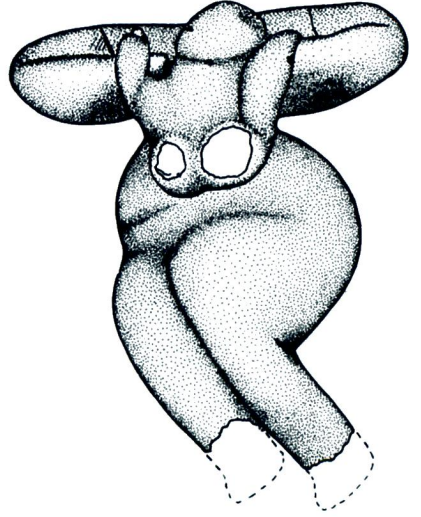
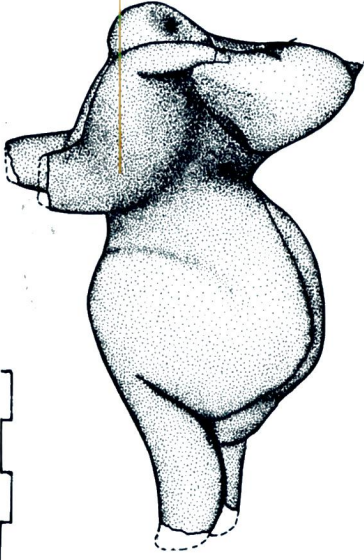
Levha 42 - KAD'ın kil figürinlerinden.

Refik Duru

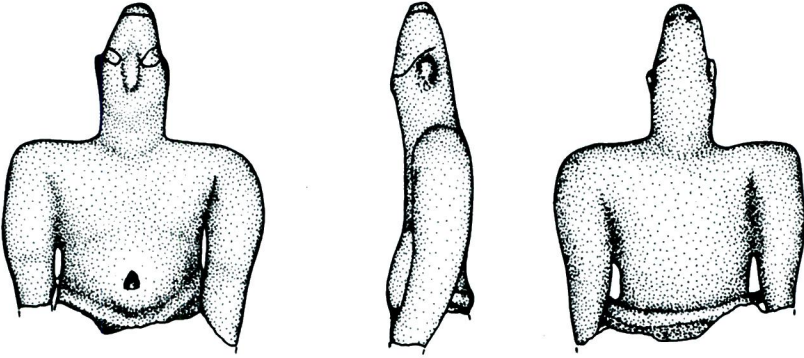


Levha 43 - 3. Kutsal Alan'da bulunmuş figürinlerden.

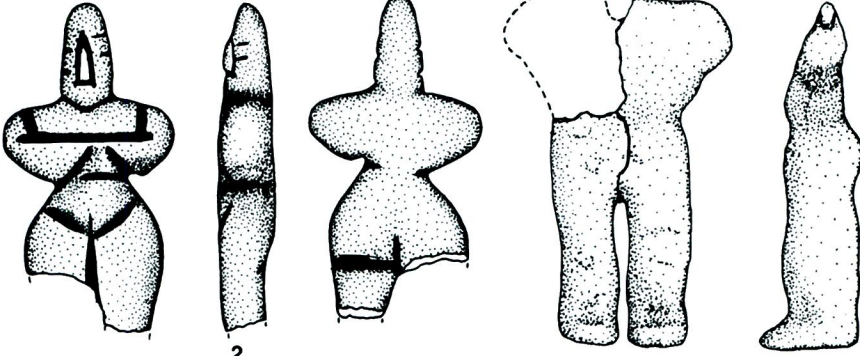
Refik Duru



Levha 44 - 3. Kutsal Alan'da bulunmuş figürinlerden.

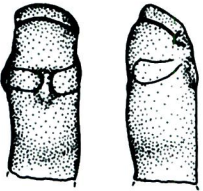


1

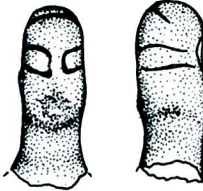


2

3



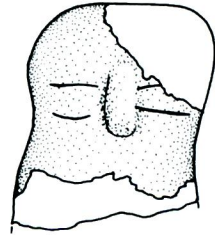
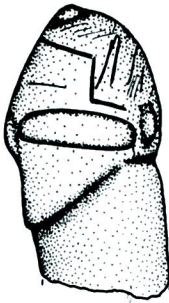
4



5



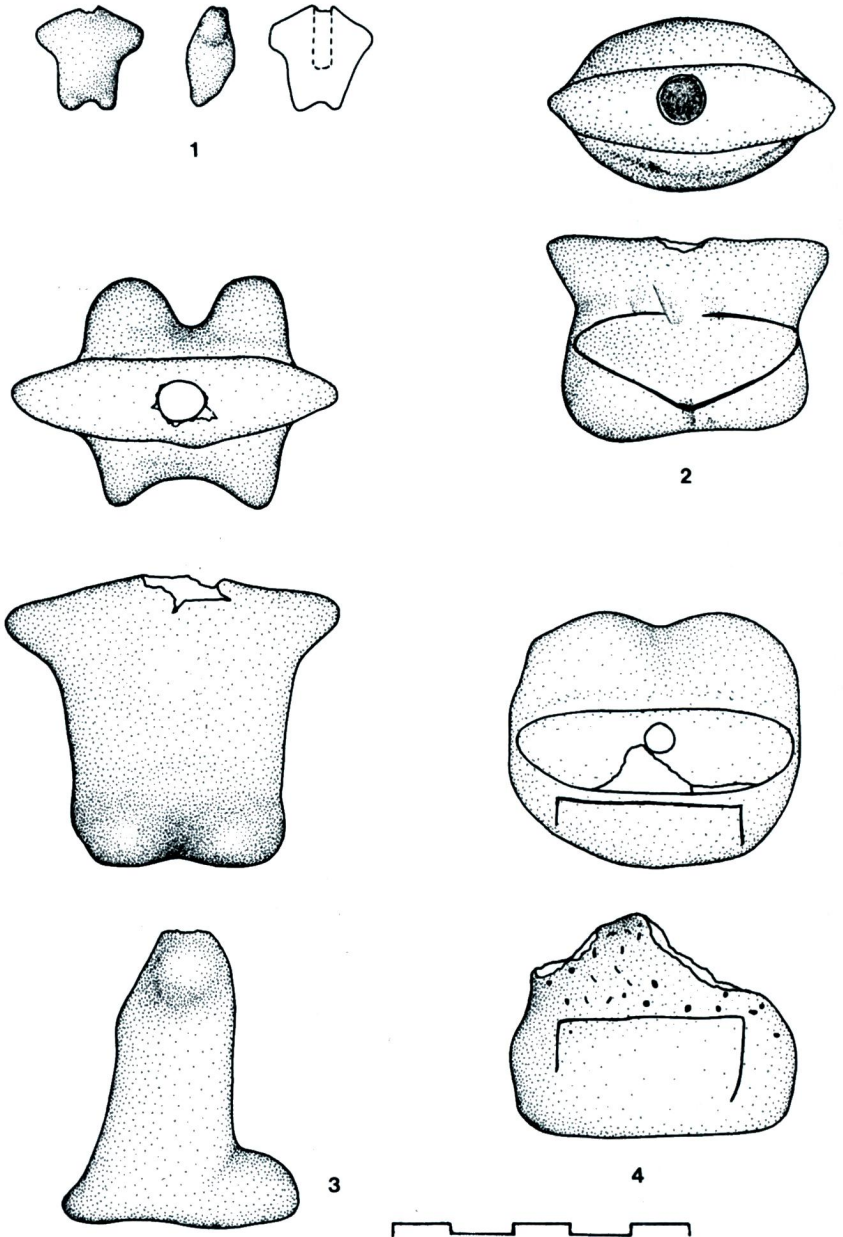
6



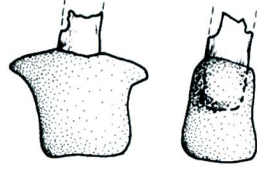
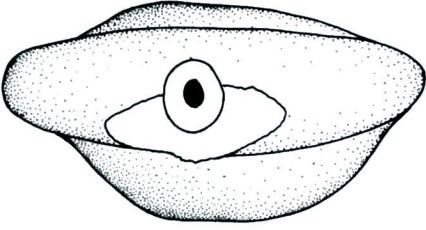
7



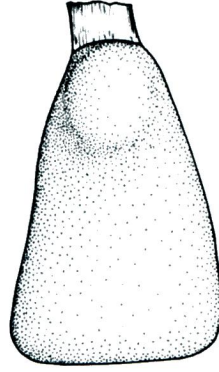
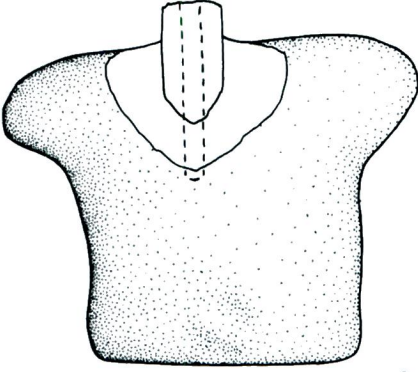
Levha 45 - Yassı vücutlu figürinler (1-3) ve figürin başları.



Levha 46 - KAD idollerinden.



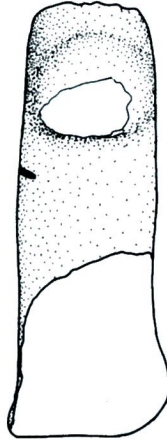
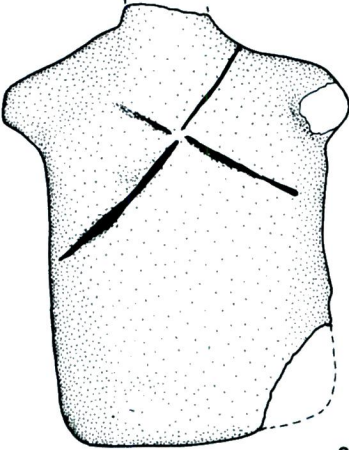
1



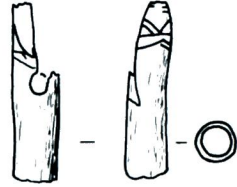
2



4



3



5



Levha 47 - KAD'ın kemik başlı idolleri(1-2), kemik başlar (4-5) ve yassı idol (3).

Refik Duru



1



2



3



4



5



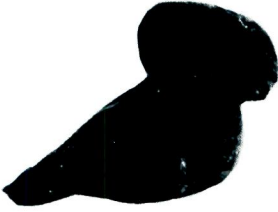
Levha 48 - KAD figürinlerinden bazıları.



1



2



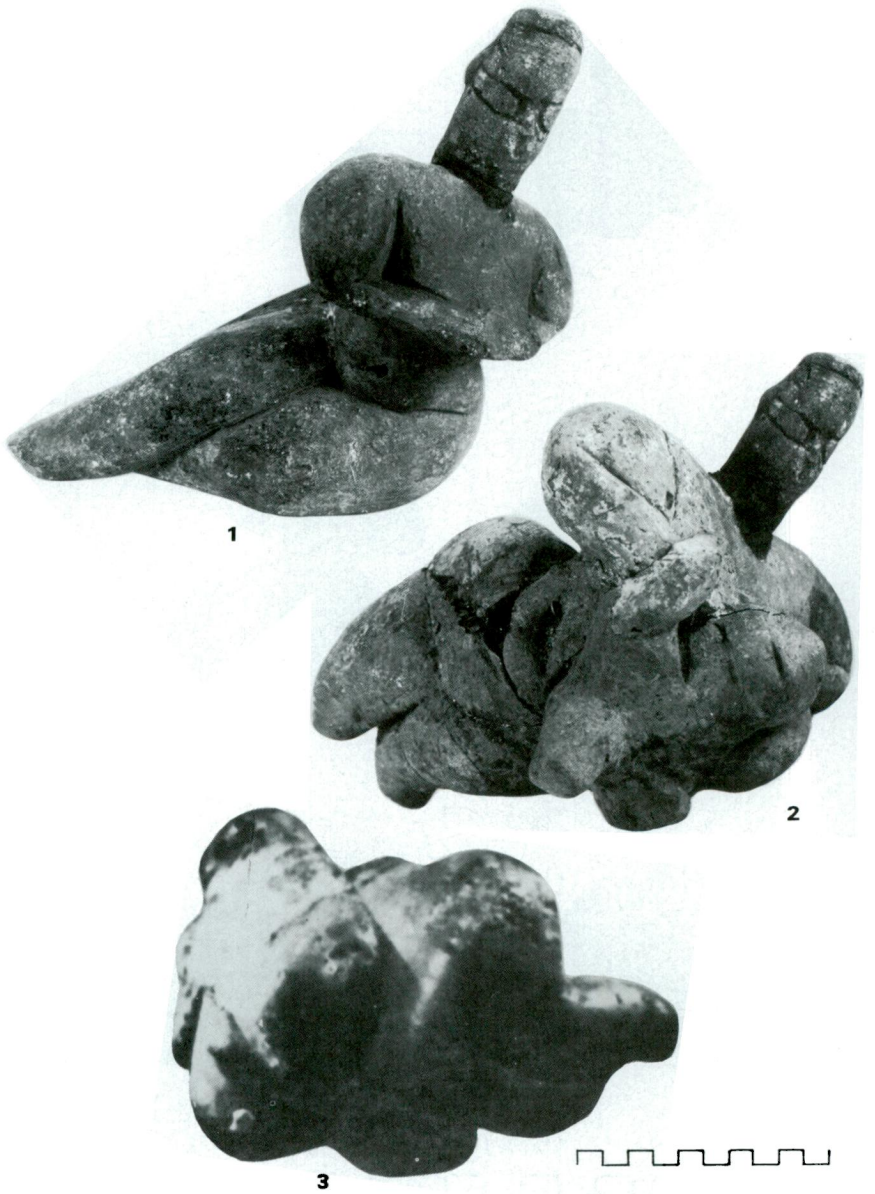
3



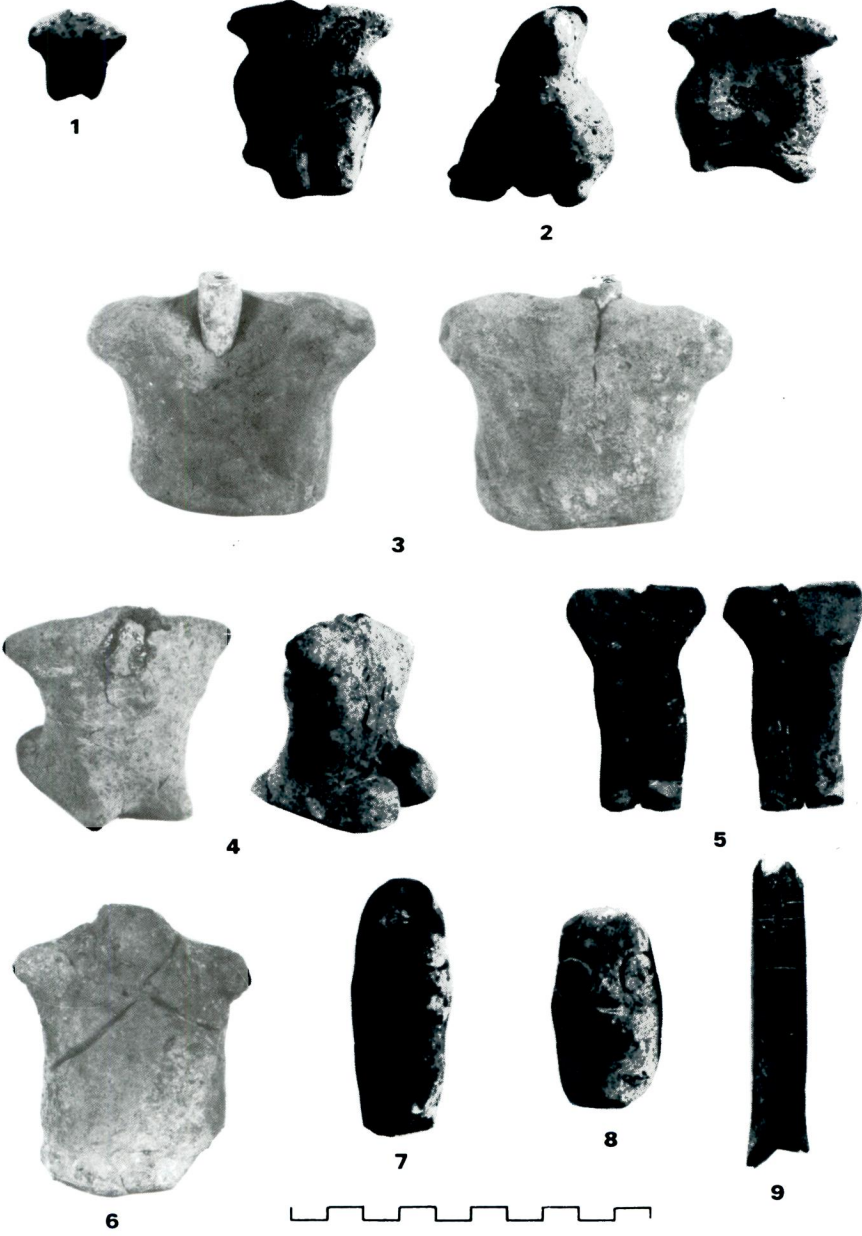
4



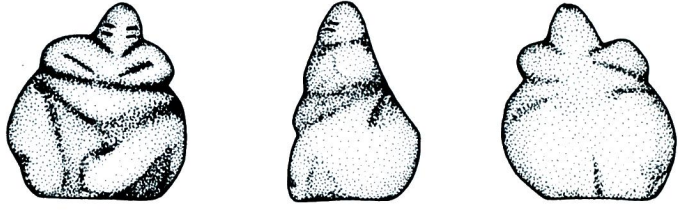
Levha 49 - KAD figürinlerinden bazıları.



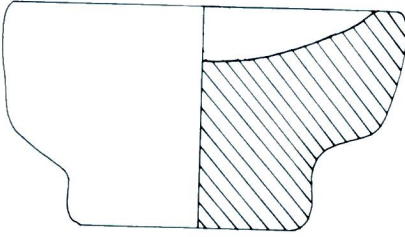
Levha 50 - 3. Kutsal Alanın yatmış figürinleri -başlar tarafımızdan eklenmiştir- (1-2) ve Metropolitan Museum'daki bir figürin (3).



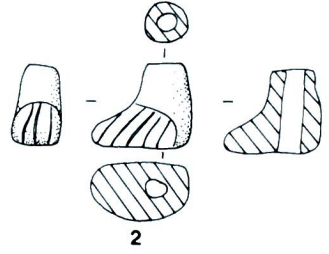
Levha 51 - KAD idolleri ve figürin başları.



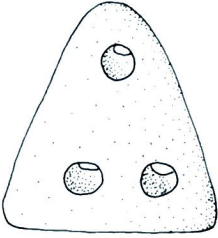
1



5



2



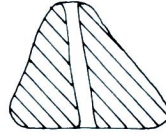
7



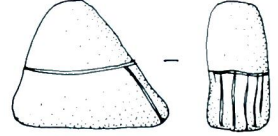
7



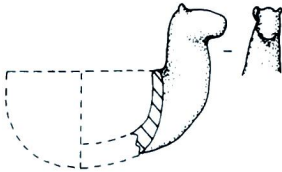
3



3



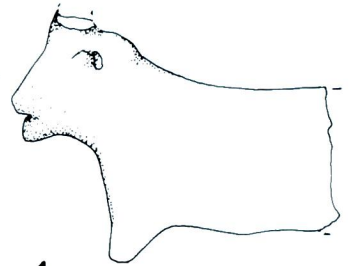
3



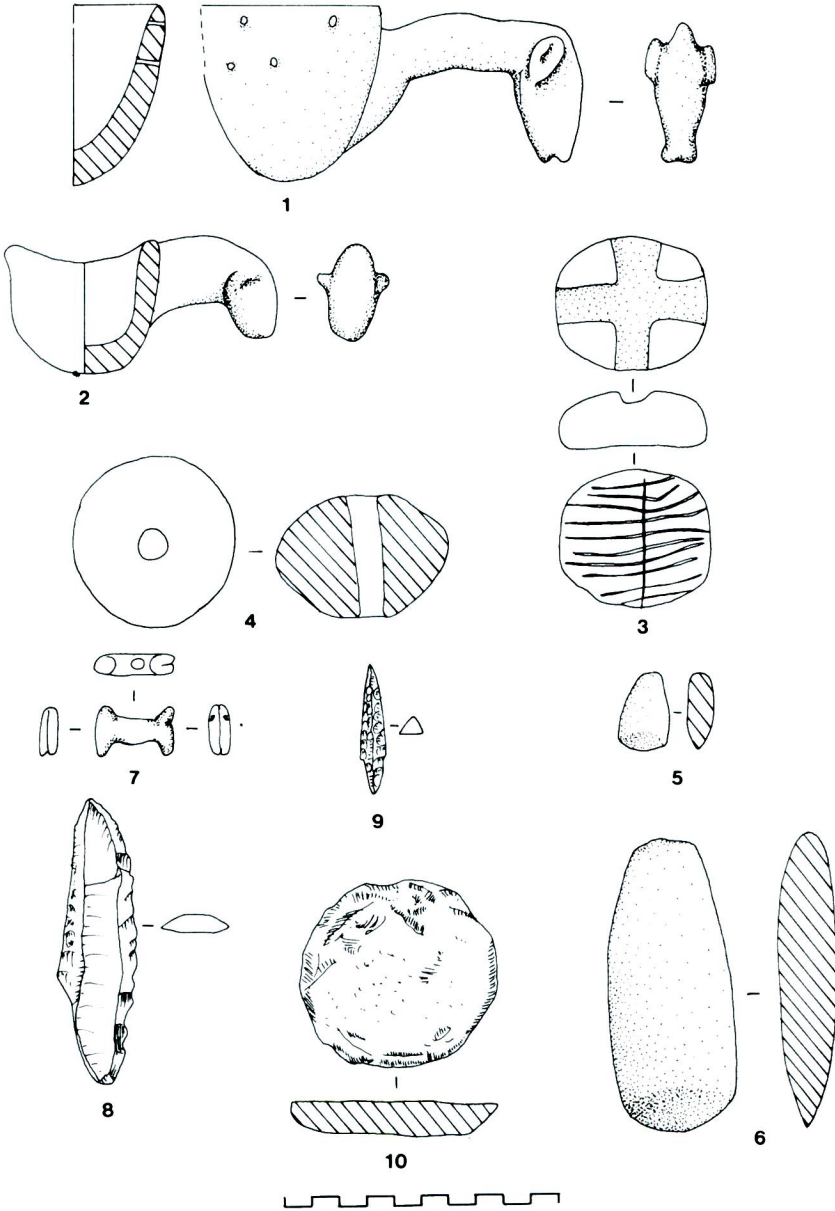
6



4

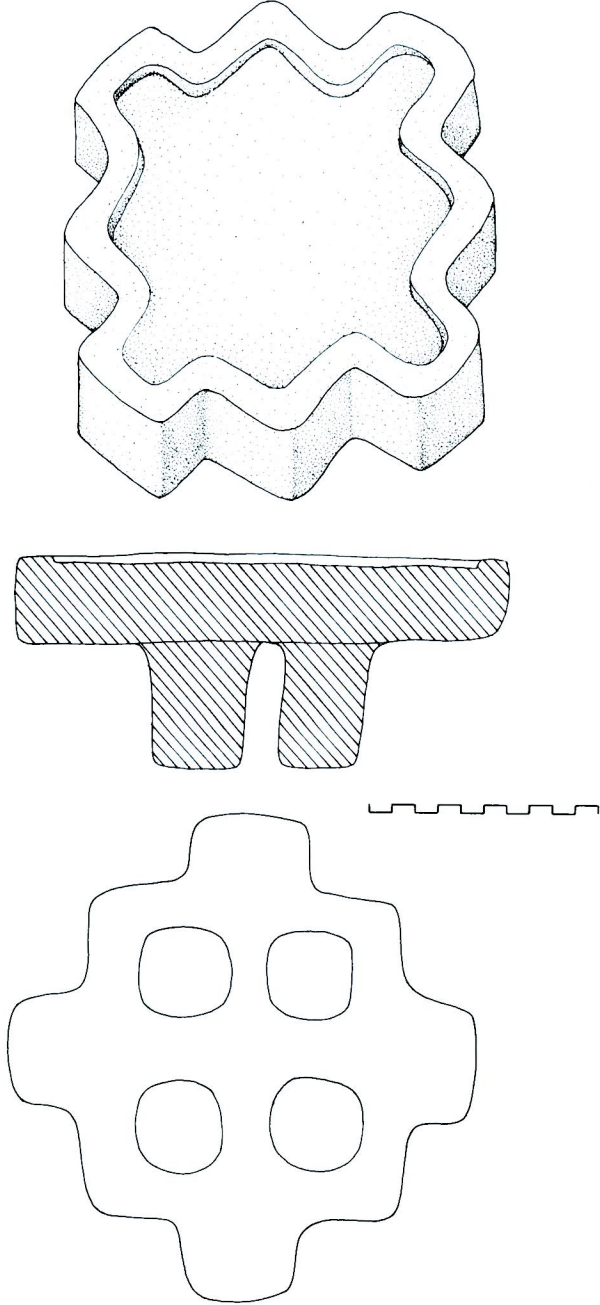


Levha 52 - TD'nin mermer figürünü (1) ve Höyücek'in pişmiş toprak eserlerinden bazıları.



Levha 53 - Mermer (1-2) ve taş eserlerden.

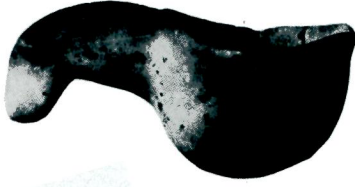
Refik Duru



Levha 54 - TD'den minyatür masa.



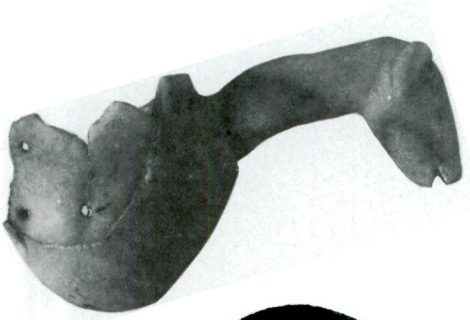
1



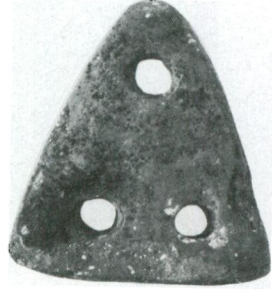
3



4



2



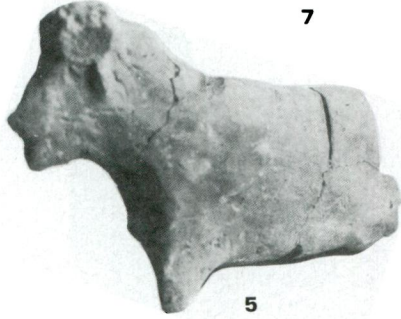
7



6



8



5



9

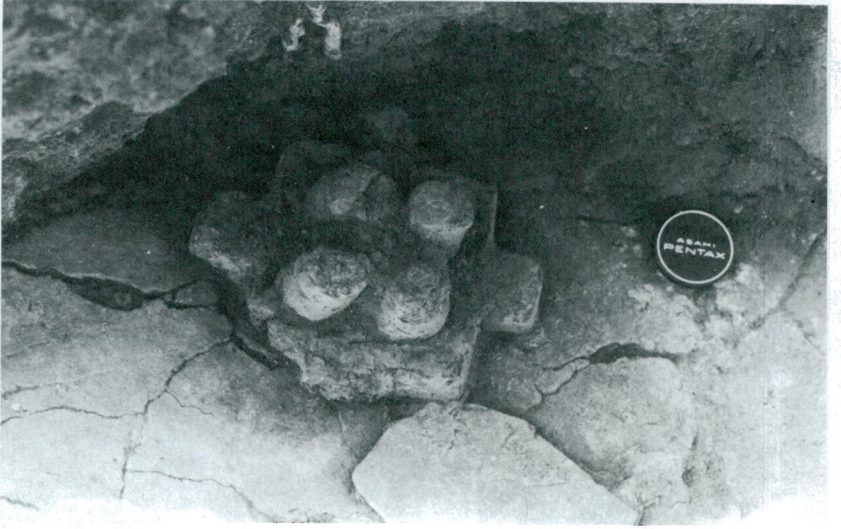


10



Levha 55 - Küçük buluntular.

Refik Duru



1



2



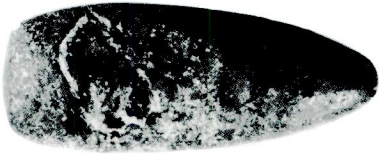
Levha 56 - Minyatür masa (2-3) ve buluntu durumu (1).



1



2



3



Levha 57 - Pişmiş kil sapan taneleri (1), kil tabla (2), taş balta (3) ve bir sepetin izi (4).

