

## New Research in Northwestern Pisidia: Ancient Konane (Conana) and its Territory

Bilge Hürmüzlü – Andrea De Giorgi – Paul A. Iversen

**Keywords:** Pisidia, Konane/Conana, Gönen, Tumulus, Lydia

**Anahtar Kelimeler:** Pisidia, Konane/Conana, Gönen, Tümlüs, Lidya

In the summer of 2009, the second season of the Isparta Archaeological Survey (IAS) was conducted under the auspices of the Turkish Ministry of Culture and Tourism, Directorate General Antiquities and Museums<sup>1</sup>. The IAS focuses on the territory of northwestern Pisidia and in 2009 we investigated the area around the modern village of Gönen, which lies 24 km north of Isparta and where ancient Konane (Roman Conana) was situated (Figs. 1-3). The immediate purpose of fieldwork in the area of Gönen was to document the surroundings and physical transformations of the ancient town of Konane – a Pisidian community whose historical and archaeological record remain largely undocumented<sup>2</sup> – with a view to situating our findings within the larger context of the complex landscape of northern Pisidia.

Although preliminary, this interim field report illustrates the aims and areas in which this new research team operated and offers some hints as to the cultural configuration of Konane's landscape and its development through history.

---

<sup>1</sup> The Isparta Archaeological Survey (IAS) was founded by members of the Department of Archaeology at Süleyman Demirel University, Isparta (B. Hürmüzlü), by members of the Department of Classics at Case Western Reserve University in Cleveland, Ohio (A. De Giorgi and P. Iversen, the former of whom is now at the Department of Classics at Rutgers University, New Jersey), and members of the Fachhochschule für Technik und Wirtschaft, Berlin (K. Kohlmeyer, A. Weiser). We would like to thank these institutions, as well as the Turkish Ministry of Culture and Tourism and the Suna & İnan Kırac Research Institute for Mediterranean Civilizations, for their generous support. Our special thanks goes also to Bülent Okta (Eskişehir Museum), the Representative of the Turkish Ministry of Culture and Tourism, and to all the students and others who participated survey.

<sup>2</sup> Several epigraphical surveys traversed the territory of Konane and recorded abundance of written documents, among them are Buckler *et al.*, Ramsay, Drew-Bear and Özsait; hardly illustrated by them is the archaeological record.

## Structure and Working Methods of the IAS

The IAS was devised with a three-tiered format: (I) an archaeological, architectural and topographical survey of the fortress on Kale Tepe (Figs. 2, 4: 1a, and 11), (II) an archaeological survey of the surrounding area, and (III) an epigraphical and architectural survey of the town of Gönen and some nearby villages that operated in close tandem with the archaeological team. For (I), a group of specialists painstakingly began to map the topography and architectural features of Kale Tepe while at the same time a cursory survey of the material found within the perimeter was made. For (II), another group conducted an intensive landscape archaeological survey wherein a team of field walkers spaced 5–10 m apart covered a pre-determined section of landscape collecting all the artifacts that they found on the ground, especially pottery, while mapping their trajectory (a straight transect) via GPS hand-held devices. For (III), a third group systematically investigated the entire town of Gönen on foot and some nearby villages, recording any inscriptions and significant architectural pieces they found. The full results of these last two initiatives will be more fully disseminated by forthcoming reports<sup>3</sup>.

### I. The Site of Kale Tepe

In the summer of 2009, the IAS began to investigate and map an impressive fortified site at Kale Tepe (1656 m ASL, Figs. 2, 4: 1a, 5, and 11), 2 km northwest of Gönen<sup>4</sup>. The Kale Tepe site appears to have supported a fully nucleated city, possessing a large and complex fortification system within which was contained a large domestic quarter and a system of streets (Fig. 5). In addition, the southeastern flank of the hill is punctuated by tumuli and graves cut into the bedrock, some of which we investigated.

The preliminary pottery evidence indicates that this hilltop site was active in the early Hellenistic period and that it was abandoned in the Roman period, when the settlement activity shifted to the southeast onto the gentle slopes that dominate a vast and fertile plain. Water resources and rich soils made this sector of the landscape especially conducive to occupation and to agricultural activities. A dense presence of Byzantine finds, in particular, may

---

<sup>3</sup> The inscriptions will be published separately by P. Iversen.

<sup>4</sup> Kale Tepe was discovered and registered as the site of Konane by The Isparta Museum in 2008.

suggest a further extension of the settlement to the west. Although it is too early to tell, the findings warrant testing the hypothesis that the city center of Konane in the Hellenistic period may have actually been located at Kale Tepe, and only in the later Roman period did the heart of the city move southeast which now lies under the modern town of Gönen.

## II. The Survey

### A. The Landscape

While the geological features of the region will be studied in depth in the future<sup>5</sup>, some preliminary comments on the landscape can be made. Above all else, topographical diversity is the hallmark of the region (see Fig. 3). The high peaks of the Barla and Tınaz Mountains frame the valley to the north, gently descending through alluvial fields into the plain of Gönen, which forms an east-west corridor linking Lake Eğirdir to the districts of Milyas and Kibyrtis beyond Lake Burdur (Syme 1995: 177-192). Discrete, low relief massifs hedge in the plain to the south, thus giving this basin its secluded character. Limestone with interspersed flysch, sandstone, and conglomerate are the geologic signatures of these mountain systems, while sedimentation on the piedmont and the plain has not completely obscured the archaeological record. For example, in an area of presumably dense alluvial deposits at the low-lying Çürüktaş Sırtı valley, a “window” in the terrain revealed a 1.15 m thick clayish deposit atop Hellenistic ceramic (Figs. 2, 6 and 7). While this sample of low to medium sedimentation can hardly be taken as blueprint for the rest of the territory, it hints at the patterns and processes that shaped this valley and is what one would expect in an area without any major body of water or the action of non-perennial streams. As for the hydrology of the region, in recent years it has undergone drastic transformation. In particular, two small dams in the east and west of Gönen have created hydrological basins to collect waters from the adjacent massifs.

---

<sup>5</sup> A project on the geological features of Konane and its territory will be undertaken by Professor Vedat Toprak and his team from Middle East Technical University, Ankara in 2010.

## B. The Historical Development of Konane and its Territory

Previous investigations near Gönen, albeit with different scope and aims, illustrate the apparent continuum of settlement<sup>6</sup>. Although this is in harmony with the archaeological record of most Anatolian landscapes, it poses questions as to the quality and inner characteristics of this continuity, notably its fluidity and/or breaks. To that end, IAS devised an intensive archaeological survey in the summer of 2009 that chiefly investigated the piedmont of Gönen's valley.

The survey began with the investigation of Akyokuş Tepe (see Figs. 2, 4: 1b, and 11), a conspicuous natural hill situated north of Gönen. It then moved southwest, so as to investigate the piedmont and highlands that frame the adjacent plain. While visibility in this territory varies considerably (the vegetation ranges from maquis shrubland on the higher elevations down to olive orchards and grain fields in the vicinity of the plain), from the very onset it was evident that this landscape was a palimpsest of human activity from the 2<sup>nd</sup> millennium BCE to the Middle Byzantine Period. The "carpet" of ceramics occasionally blurred the picture; nonetheless, it became apparent that dissemination was the outcome of recognizable patterns and specific settlement schemes.

## C. The Pre-Hellenistic Period<sup>7</sup>

In the summer of 2009, the IAS found pottery fragments in the area, where Phrygian, Lydian, and Ionian influences are encountered. They attest to the intercultural relations of the region from the 7<sup>th</sup> and 6<sup>th</sup> centuries BCE<sup>8</sup>. At

---

<sup>6</sup> Surveys conducted in the territory of Konane (at villages south of modern Gönen) produced important information about the second-millennium BCE habitation at the region; see Özsait 1987: 323-325, Fig. 16. Moreover, for the Paleolithic and Mesolithic finds from the villages of Senirce and Gümüşgün (formerly Baradız) south of Konane, see Özsait 1980: 64-66.

<sup>7</sup> While the Roman and Post-Roman periods are better represented in the visible remains, one of our main desiderata is to define the settlement modules preceding the vast modifications that this landscape underwent in the Roman and Post-Roman periods. In particular, one question that the survey will try to answer is the character of the Pre-Hellenistic settlement in the region and the effects, if any, of the intersection of Lydian, Phrygian and Persian cultures. Although very little is known about the Pre-Hellenistic period in Pisidia, finds from IAS survey in 2008 in the region of Yassıören (Tymandos), also produced important evidence of Phrygian and Lydian culture there. See Hürmüzlü 2007; Hürmüzlü 2009a, Hürmüzlü 2009b.

<sup>8</sup> Pisidia itself came under Phrygian and later Lydian control during the first millennium BCE, and then passed under Persian control (Herodotus, 3.90 lists Milyas as the first satrapy together with Ionians, Lycians, Pamphylia and others), as archaeological finds confirm. However, it is still too early to tell

the southwest valley of Kale Tepe in particular, fragments of “streaked ware” and “banded ware” were found, both of which are common wares in South Anatolia (Figs. 8, 9: a-b and 10)<sup>9</sup>. Among the banded ware pottery, examples of an Ionian cup, dated to the first half of the sixth century BCE<sup>10</sup> and East Greek bowls of late sixth century BCE were recovered<sup>11</sup>. How and when Ionian products first entered Pisidia and Konane specifically<sup>12</sup>, still needs to be studied. However, it is likely that the circulation of Ionian material culture in the region started already by the seventh century and, fueled by Lydian commercial networks, continued in the sixth century BCE<sup>13</sup>.

## D. The Hellenistic Period

The political and urban configuration of this region during the Hellenistic period is also unknown. Although important studies help us frame the questions as to the emergence of new urban foci and the consolidation of pre-existing communities (Mitchell 1991: 122), the textual evidence for this area is thin. While it is known that the Attalid and Seleucid foundations at Apollonia and Seleukia Sidera involved this region in the dynastic rivalries of the era (Cohen 1995: 285-290; 349-351), how Konane was affected by these intrigues remains to be discovered. The archaeological material recorded in

---

how the district of Konane was affected and responded to these different political developments. For the Phrygian and Lydian administration in this region see, Brandt 1992, 12-14. For the Persian administration in Pisidia, see Brandt 1992: 23-26; Schuler 1996: 143-144.

<sup>9</sup> For the distribution of the streaked ware in Anatolia, see Hürmüzlü 2009a: 3, n. 19.

<sup>10</sup> For the chronology of Ionian cups and parallels to the Konane fragment, see Schloutzhauer 2008: 167, Fig. 1. While the Ionian cups, as the recent studies of clay analysis indicate, are of South Ionian production, they spread over a vast area from the Black sea region to the Mediterranean and were also produced locally (see Cook-Dupont 1988: 129, n. 1; Schloutzhauer 2008. 165-166). The same is valid for the banded ware and East Greek Bowls, which have been found in different Greek settlements and colonies as well as in the hinterland where Ionian traders set foot. The latest research at Kelenderis, Tarsus, Tell Sukas, and Kinet Höyük show that Ionian pottery types were also produced locally in the Mediterranean region. For local production at Tarsus and Al Mina, see Hanfmann 1956: 182; Goldman *et al.* 1963: 316-318. For the discussion on the banded ware found in Tell Sukas see, Plough 1973: 23.

<sup>11</sup> The banded ware and East Greek bowl bases that have been found at Konane are of the second half of the sixth century. For the well dated examples from Klazomenai and Tocra, see Ersoy 1993: 368-372; Boardman-Hayes 1973: 24, Fig. 9: 2038.

<sup>12</sup> Ionian pottery from Konane is not unique in Pisidia. At Uylupinar cemetery near Kibyra, seventh and sixth century BCE Ionian pottery has been found together with Corinthian and Attic pottery; see Çokay Kepçe 2009: 32-35.

<sup>13</sup> For the intercultural relations of Phrygians, Lydians and Ionians see, Hanfmann 1978; L'vov-Basirov 2001; Kerschner 2005. For intercultural relations in Pisidia, see Hürmüzlü 2009a.

the summer of 2009, however, shows a mesh of sites of small size, averaging 50–100 m in diameter that showcase materials (primarily incurved rim red/brown/black slipped bowls) that can be ascribed to an Early Hellenistic horizon. They are located at a minimum of 250 m to a maximum of 1500 m from one another. In several cases, the continuity with preexisting settlements is noticeable. Although this sparse module of settlement may be consonant with the typical design of Seleucid military colonization, a larger sample is needed to draw a more robust conclusion (Cohen 1995: 49).

In addition, the relationship between these small villages and the fortress perched on top of Kale Tepe needs to be assessed. Whether they represented a corollary of affiliated settlement, or conversely disjointed units, is difficult to determine, but the now-under-way study of the fortress and the areas below will seek to clarify these questions. What can be said at the moment is that in our initial cursory survey of Kale Tepe, the small amount of materials collected within the fortress is suggestive of middle to late Hellenistic occupation<sup>14</sup>, although it must be cautioned that the IAS recorded no apparent break between the Hellenistic settlement and its Roman successor. Hellenistic sites like Eminegök Çeşmesi situated on the slopes of Kale Tepe (Fig. 2) may have continued to operate on the same terms, as no apparent fracture in the land tenancy systems can be detected. Vast *necropoleis* located on the southern reaches of Akyokuş Tepe (Fig. 2 and 4: 1b and 11) reaching down to the modern reservoir and east of it suggest that they framed the community of ancient Konane, which in the Roman period occupied the site now under the modern village. The IAS's exploration of the southwestern reaches of the necropolis was unfortunately blocked by modern development at the construction site of state-subsidized housing (TOKİ) (Fig. 2)<sup>15</sup>.

## E. The Roman Period

We are not yet in a position to posit the layout and prestige of Konane in the Roman period. The city was cited as the northernmost significant point *ca.* 13–15 CE in the important decree regulating traffic in the territory of Sagalassos (Mitchell 1976 = *SEG* 26.1392, ll.13 and 33), and under the Flavians

---

<sup>14</sup> The paucity of materials that date to the Roman period and beyond might situate the demise of the Kale Tepe settlement in the second half of the 1<sup>st</sup> century BCE, when unrest and unsung wars between Pisidians and Amyntas took place, see Strabo 12. 6. 3; Dio 53. 26. 3.

<sup>15</sup> This has led to the destruction of much of the archaeological burial contexts; on the positive side, a number of inscribed funerary *stelae* recovered from the site that are now in the Isparta Museum partially compensates for this loss.

the city honored Gaius Iulius Cornutus, the high priest of the Augustus and the *agonothetes* of the Great Caesarian games at Perge (*IKPerge* 43). Moreover, an already-published inscription found in a wall in Gönen that refers to the cult of the Divine Augustus<sup>16</sup>, suggests the presence of an altar or a temple for the cult of the emperor in, or in the environs of, Konane. The chronology of the document is a matter of guesswork, yet one should consider the similar establishment of imperial sanctuaries and altars as early as the Julio-Claudian period at nearby Apollonia (Buckler *et al.* 1933: 142-143) and Agrae (*CIL* 3.6869). In addition, a new dedication to the emperors Flavius Valerius Severus and Galerius Valerius Maximianus and two new Roman milestones discovered by the IAS (see III below) attest to the visibility of Konane in the tetrarchic era. The title of *civitas* boasted by Konane on some of these milestones, however, is puzzling for more than one reason; the achievement of this status and the agencies involved cannot be determined yet nor does coinage offer any further hints.<sup>17</sup> In any event, more cogent hypotheses about the inter-connectivity of this sector of Pisidia can now be made, and in particular how a road branched off the Via Sebaste some 15 km to the west of Konane and made its way east to Konane, then eastwards to Seleukia Sidera, and then on to Lake Eğridir (Fig. 1).

### III. The Epigraphical finds

During the summer of 2009, thirty five inscriptions were discovered by the IAS during the systematic survey of the town of Gönen and some nearby villages, only two of which employ Latin (both milestones presented below). None of them was found *in situ* in a secure archaeological context, although five without a doubt were recently unearthed at fresh construction sites behind and next to the town's new bazaar (Pazar Mahallesi), thus bearing witness to the presence of a heretofore undocumented Roman cemetery in this area<sup>18</sup>.

<sup>16</sup> *SEG* 31.1134. On the diffusion of the imperial cult in Pisidia and, more generally, in Asia Minor, see Price 1984.

<sup>17</sup> The circumstances of a *civitas* grant at nearby Tymandos, however, might offer a good contemporary parallel, see Bru – Lebarre - Özsait 2009.

<sup>18</sup> In addition to these inscribed stones, a large funeral stele and the top of another one that was probably inscribed were found in this area, along with an open grave, bones, Roman burial tiles, and a copious amount of Roman pottery.

Of these thirty five inscriptions, one is a victory monument<sup>19</sup>, four are Roman milestones (two already published, see Drew-Bear 2008), one a Christian monogram, one a dedication in fulfillment of a vow to Zeus, one a dedication to the Divine Augusti (already published, see above note 16), one a dedication (probably by the city of Konane) to the emperors Flavius Valerius Severus and Galerius Valerius Maximianus, and the other twenty-six are funerary, including a sarcophagus and a funerary epigram (the latter already published)<sup>20</sup>.

The funerary inscriptions mainly fall into two distinct types, the first and most common of which is decorated with a pediment (often with a disc or rosette), acroteria, two pilasters at the sides, and festooned with a garland from which there often hangs a grape bunch. The second major type is fashioned in the shape of a column with a varying number of sides. A third, less-common type features either carved figures standing on a ledge or just the bust of figures under an arch. Some of these motifs and figures are executed on the same material (local limestone) or in a manner strikingly similar to the funerary stelae at the Isparta Museum from Konane, most notably some recent acquisitions from the TOKİ site about 1 km west of Gönen's main square, where lies a second Roman cemetery recently unearthed by construction and that appears to extend at least a half of a kilometer to the northeast. Undoubtedly some of these stelae come from the same workshops or were even made by the same artist<sup>21</sup>.

The inscriptions themselves mostly date between the second and fifth centuries CE and display some unusual forms and a mixture of Greek, Macedonian, Roman and local names, thus indicating the lingering imprint on the area of all the peoples who inhabited or controlled the region throughout antiquity, including the Phrygians, Greeks, Macedonians, and finally the Romans.

---

<sup>19</sup> Already published (Collignon 1879: 340, 15; Sterrett 1888b: 338, 472), but now much damaged.

<sup>20</sup> See *SEG* 31.1284 and 1284, but the stone has subsequently suffered considerable damage. In addition, one of the sides of this inscription contains a late, very faintly inscribed funerary text that was not noticed by previous editors.

<sup>21</sup> The author plans a thorough study of the inscriptions in the Isparta Museum in the near future including the new ones from TOKİ, and at this time he will undergo a more thorough examination of the various types of funerary stelae and workshops at Konane.

The two new Roman milestones are especially noteworthy and preliminary texts are given here<sup>22</sup>. The first (Fig. 13) is made of white limestone and is broken on the left, at the bottom and back<sup>23</sup>. It was found July 4<sup>th</sup> 2009 on a driveway in the village of Gönen (Pazar Mahallesi, Gürsoy Sokak 14) and brought to our survey house. The owners of the house told that about ten years ago they had brought it from the area of Havdan (Kınık Çiftliği), which lies to the southeast of Gönen and where the family has a field. On July 31<sup>th</sup> 2009, the owner of the field took us there and showed us exactly where he found it (Figs. 2, 12 and 13).

Date: 198-211 CE.

[Impe]rāt[or Caesar] Lucius Se-	1
ptimius [Se]verus Pius Per-	
tinax Augustus Arabi-	
[cus Adi]abenic[us] Par-	
[thicus Maximus], pon[t]ifex	5
[maximus - - - - -]	
[- - - - -]	

The title *Parthicus Maximus* places this *milliarium* after 198 CE, but since the stone is broken at the bottom where presumably the names of Caracalla and Geta were found, the precise chronology is not clear at the moment<sup>25</sup>.

<sup>22</sup> For two other milestones from this area that have already been published, see Drew-Bear 2008: 147-54. For a third, see French 1991: 54, 4. This last stone was inspected in the cemetery at İğdecik where it currently adorns the foot of a modern grave, and a squeeze was taken of it. One correction of French's text is necessary in his "Use 2", line 5. Here on the squeeze the letters CAESS are clear rather than AUGG. Hence read:

vac. dd(ominis) nn(ostris)	1
Fl. V̄al. Çonstantino	
et Val. L̄iciniano [Li]-	
[cinni]o pp(iis) ff(elicibus) invict[is]	
vac. Caess(aribus duobus)	
[a] çivitat(ate) Conanensium.	5

<sup>23</sup> Height: 0.400 m.; Circumference: 1.240 m; Letter Height: 0.044 – 0.0049 m; Interlinear spacing: 0.003 – 0.017 m. Color: White (Munsell 5Y 8/1). GPS Coordinates: 4201298N; 0283837S; Elevation, 990 m.

<sup>24</sup> The text employs a late, cursive script. For example, the Rs look like Greek lambdas with a stroke at the apex extending to the left. In line 1, only the lower tip of the R's right diagonal is visible, as is the lower tip of the T. In line 3, only the right tip of the T's horizontal hasta is visible.

<sup>25</sup> For five very similar *milliaria* from Cappadocia, see Sterrett 1888a: 264, n. 300; 267, n. 306; 268, n. 307; 275, 318; and 277, n. 320.

More significantly, it is very likely that the stone is originally from the vicinity of Havdan where it was found, and thus the milestone served as a marker along the road that undoubtedly made its way southeast of Konane towards Seleukia Sidera. If so, this is the first milestone recovered along that route.

The second new milestone discovered (Fig. 14) is made of very pale brown limestone and it was found July 27<sup>th</sup> 2009 at the cemetery of İğdecik, which lies 7 km southwest of the modern village of Gönen (Fig. 2)<sup>26</sup>. It is a bilingual milestone that is broken at the top, towards the bottom in places, and the surface is much worn. The monument was recently cemented upside down as an adornment very close to the NW gate of the portion of the cemetery located on the south side of the main road that splits the cemetery in two, thus obscuring portions of a Greek text to the right of the main text.

Date: 312-324 CE

[DD(ominis) NN(ostris)] 1

[Fl(avio) Val(erio) Co]nstantino [et Val(erio)]

[Li]çiniano

pp(iis) < invict(is) < [Augg(ustis) a]

civit(ate) < Conanen- 5

sium

mi(lia) IIII.<sup>27</sup>

This stone was located four Roman miles from Konane along a route that undoubtedly connected Konane with the Via Sebaste some 15 km to the west (for the path of the Via Sebaste, see Fig. 1). Rott (1908: 82) saw parts of this road to the west of İğdecik<sup>28</sup>, but he reports that no traces of it were to be seen between İğdecik and Gönen. In future campaigns we will endeavor to find and to map this road.

<sup>26</sup> Height: 0.670 m.; Diameter: 0.450 m.; Circumference: 1.500 m; Letter Height: 0.023 – 0.067 m; Interlinear spacing: 0.005 – 0.140 m. Color: Very pale brown (Munsell 10Y 8/3). GPS Coordinates: 4200521N; 36274904E; Elevation, 1024 m.

<sup>27</sup> In bigger Greek letters to the right of the main text (when viewed with the original orientation of the stone), but partially obscured by the fence, I read APO / EC / KI? / ΚΩ. One would expect the repetition of the distance of 4 *milia* in the Latin text from Konane or the mention of a larger number that is the number of the milestone within some greater region, but as of yet I am unable to decipher what these letters mean.

<sup>28</sup> He also reports a milestone so submerged in the earth that he could not tell if it was inscribed. It is impossible to say if this is one of the published milestones now resting in İğdecik's cemetery.

## Conclusion

Overall the first full season of field work of IAS produced many important findings about the history and archaeology of ancient Konane. Ceramics of seventh and sixth century BCE from the valleys west of Kale Tepe hint to the presence of a Pre-Hellenistic settlement. The ideal environmental conditions and the ease of access to the adjacent plain may have played important roles in the historical and cultural development of the region in the 1<sup>st</sup> millennium BCE. These materials, however, raise as-of-yet unanswered questions about the intercultural relations of Pisidia in the Pre-Hellenistic period.

Preliminary finds suggest that the city center of Konane in the Hellenistic period may have actually been located at Kale Tepe, and only in the later Roman phase did the city move southeast, which is now under the modern town of Gönen. The preliminary archaeological data also present distinct signs of expansion in Konane's settlement during Late Antiquity. The occupation and possibly later fortification of the Akyokuş Tepe, in conjunction with the growth of rural settlement in the western sector of the valley, invite hypotheses over the new economic outlook and demographic expansion in the region. The vast systems of terraces and farms investigated west of Emine Gök Çeşmesi illustrate an interesting module of settlement that lingered presumably throughout the Middle Byzantine Age.

This dynamic picture raises important questions regarding the interaction between human activity and landscape in this corner of Pisidia. The individual character of this community in antiquity with its settlement fluctuations and modifications will be thoroughly investigated in the years to come.

Yrd. Doç. Dr. Bilge Hürmüzlü  
Süleyman Demirel Üniversitesi  
Fen-Edebiyat Fakültesi  
Arkeoloji Bölümü  
32260 Isparta / Türkiye  
hurmuzlu@fef.sdu.edu.trr

Dr. Andrea De Giorgi  
Rutgers University  
Department of Classics  
131 George Street  
New Brunswick, NJ 08901 / USA  
audg@rci.rutgers.edu

Dr. Paul A. Iversen  
The Department of Classics,  
Case Western Reserve University  
111 Mather House  
11201 Euclid Avenue  
Cleveland, OH 44106 / USA  
paul.iversen@cwru.edu

## Kuzeybatı Pisidia'da Yeni Arařtırmalar: Antik Dönem'de Konane (Conana) ve Çevresi

Isparta Arkeolojik YüzeY Arařtırması (IAS) projesinin 2009 yılı çalıřmaları, Isparta'nın 24 km kuzeyinde yer alan Konane (Roma Dönemi'nde: Conana) antik kentinde, uluslararası ve disiplinler arası bir ekiple gerçekleştirilmiştir (Fig.1-3). Projenin temel amacı, Isparta Müzesi tarafından 2008 yılında tespit ve tescil edilen kentin henüz sorularla dolu olan tarihsel ve kültürel gelişmesi hakkında cevaplar aramak ve bir kültür envanterinin çıkartılmasını sağlamaktır.

Konane antik kentinde çalıřmalar üç aşamada gerçekleştirilmiştir: (I) Kale Tepe adı verilen yerleşim alanında arkeolojik yüzeY arařtırmasının yanı sıra, mimari kalıntıların tespiti ve topografik plan çizimine başlanmıştır. (II) Kale Tepe'nin yamaçlarında yer alan alanlar ile (III) Gönen İlçesi içerisinde ve civar köylerde epigrafik ve arkeolojik buluntuların tespitine dönük olarak yüzeY arařtırması gerçekleştirilmiştir.

Çalıřmalar sonunda elde edilen ilk veriler, 1656 m yükseklikte ve Gönen İlçesi'nin 2 km kuzeyinde yer alan Kale Tepe'nin (Fig. 2 ve Fig. 4: 1a), oldukça iyi durumda korunmuş olan sur duvarlarıyla tahkim edildiđi ve sivil yapılarla cadde sistemlerinin izlenebildiđi bir çekirdek yerleşme alanı olduğunu ortaya koymaktadır (Fig. 5). Bunun yanı sıra, tepenin güneydođu kısmında, kente giriři sađlayan yolun her iki yanında tümölüsler ve kayaya oyulmuş mezarlardan oluşan bir nekropolis yer almaktadır. Kale Tepe'de gerçekleştirilen yüzeY arařtırması sırasında ele geçen seramikler, tepe üzerinde yer alan yerleşmenin Erken Hellenistik Dönem'den itibaren kurulmuş olduğuna ve muhtemelen de Roma Dönemi'nde terk edilmiş olabileceğine işaret etmektedir. Roma Dönemi'nden itibaren Konane yerleşmesinin güneydođu yamaçlara kaydıđı, Bizans Dönemi'nde ise batıya doğru genişlediđi anlaşılmaktadır.

Buluntular bakımından daha iyi bir şekilde temsil edilen Roma Dönemi'nin aksine, kentin daha erken dönemlerine ait veriler oldukça kısıtlıdır. Bununla birlikte IAS projesinin öncelikli amaçlarından biri, özellikle Kuzeybatı Pisidia'da izlerine Tymandos (Yassıören) ve civarında rastlanmış olan Hellenistik Dönem öncesi Pisidia'nın arkeolojik olarak arařtırılmasıdır.

2009 yılı çalışmaları bu açıdan önemli sonuçlar vermiştir. Kale Tepe'nin kuzeybatısında yer alan vadide M.Ö. 7. ve 6. yy'a tarihlenmesi gereken Phryg/Lydia seramiklerinin ("streaked ware" gibi) yanı sıra, İonia ve Doğu Akdeniz sahillerinde sıklıkla rastlanan bantlı seramikler de ele geçmiştir (Fig. 8 ve 9). Bu buluntular Kuzeybatı Pisidia'nın Hellenistik Dönem öncesinde karşı karşıya kaldığı kültürler arası ilişkilerin anlaşılması ve söz konusu coğrafyanın tarihsel gelişiminin izlenmesi bakımından önemlidir.

Kuzeybatı Pisidia'nın Hellenistik Dönem'de politik ve yerleşim yapısına ilişkin veriler oldukça kısıtlıdır. Antik metinlerin de bu bölge hakkında oldukça az veri sağladığını belirtmek gerekir. Apollonia ve Seleukeia Sidera gibi Konane'ye yakın yerleşmelerin Attalos ve Seleukos tarafından kurulmuş oldukları bilinmekle birlikte, Konane'nin sözü edilen dönemlerde politik ve kültürel açıdan nasıl etkilenmiş olduğuna dair sorular halen cevaplanmaya muhtaçtır. 2009 yılında yapılan çalışmalarda, 50 ile 100 m çapında bir alana yayılan ve genellikle Erken Hellenistik Dönem'e tarihlenmesi gereken seramiklerin toplandığı (yoğunlukla içe dönük ağızlı/ kırmızı/ kahverengi/ siyah boyalı kâse parçaları); 250 ile 1500 m aralıklarla karşılaşılan küçük yerleşme izlerine rastlanmıştır. Vadide yer alan bu yerleşmelerin Kale Tepe üzerinde konumlanan Hellenistik Dönem'e ait kentle ilişkisi önümüzdeki yıllarda detaylı olarak araştırılacaktır.

Gönen modern yerleşmesinin kuzeyinde yer alan ve doğal bir tepe olan Akyokuş Tepe üzerinde (Fig. 2, 1b ve Fig. 3), M.Ö. II. binden itibaren Bizans Dönemi'ne dek yerleşimin olduğuna işaret edecek buluntulara rastlanmıştır. Tepenin kuzey yamacında yer alan ve geniş bir alana yayılan nekropolis (Fig. 2 ve 4: 1b ve 10), Roma yerleşmesinin üzerine kurulmuş olduğu anlaşılan modern Gönen'in kuzeyine dek uzanmaktadır (Fig. 2).

Konane antik kentinin Roma Dönemi'nde nasıl bir konuma sahip olduğu hakkında yeterince veri yoktur. Bununla birlikte, 2009 yılında saptanan otuz beş adet yazıtın çoğunluğu mezar taşlarına ait olmakla birlikte, bazıları kent hakkında önemli ipuçları sağlamaktadır. Kentin Flaviuslar Dönemi'nde Augustus kültürünün başrahibi olan Gaius Iulius Cornutus'u ve Perge'deki İmparatorluk oyunları *agonothetes*'i onurlandırdığı bilinmektedir (IKPerge 43). Bunun yanı sıra, Gönen İlçesi içerisinde bir duvarda karşılaşılan ve daha önce yayınlanmış olan yazıt (Price 1984) Konane'de bir imparatorluk kültürü veya tapınağının varlığını göstermektedir. IAS ekibi tarafından tespit edilmiş olan, imparator Flavius Valerius Severus ve imparator Galerius Valerius Maximianus onuruna adanan yazıtlar ile iki yeni Roma Dönemi mil taşı, Konane'nin Tetraşi Dönemi'ndeki güçlü varlığına işaret etmektedir. Miltaşları

üzerinde *civitas* ibaresine rastlanmıştır. Ancak, bu ibarenin kente ne zaman verilmiş olduğuna işaret edebilecek veri veya sikke henüz ele geçmemiştir. Bununla birlikte, bu mil taşları Via Sebaste hakkında önemli ipuçları sağlamaktadır (Fig. 1). İlk mil taşı Seleukeia Sidera'ya giden yolun üzerindeki bir tarlada (Havdan Mevkii, Kınık Çitliği) bulunmuştur (Fig. 2, 12 ve 13) ve maalesef tam olarak korunmamıştır. Bu mil taşı MS 198-211 yılları arasında tarihlenmektedir. İkinci mil taşı ise Gönen İlçesi'nin 7 km kuzeybatısında yer alan İğdecik Köyü mezarlığında bulunmuştur (Fig. 1 ve 14). Çift dilli olan bu mil taşının üst kısmı kırıktır. Üzerindeki yazıttan hareketle, Konane'den 4 mil uzakta yerleştirilmiş olduğu anlaşılan bu mil taşı, kenti Via Sebaste'dan 15 km batıya doğru konumlandırmaktadır (Fig. 2).

Sonuç olarak, 2009 yılında yürütülen yüzey araştırması neticesinde Konane antik kenti hakkında oldukça önemli ve yeni veriler elde edilmiştir. Konane'nin, Hellenistik Dönem öncesinden itibaren, sahip olduğu geniş ve verimli ovaları; Pisidia Bölgesi için ayrıcalıklı bir yol kavşağı üzerinde bulunması nedeniyle, bölgede önemli bir merkez olduğu düşünülmektedir. Oldukça dinamik bir yapıya sahip bir bölgede yer alan Konane antik kentinin tarihsel süreçte uğramış olduğu kültürel, politik değişimler ile bunların etkileri ve kentin sınırları hakkındaki sorulara önümüzdeki yıllarda yürütülecek yüzey araştırması çalışmalarıyla yanıtlar aranmaya devam edilecektir.

## Bibliography

- Boardman, J. – J. Hayes  
1973 *Excavations at Tocra 1963-1965, The Archaic Deposits II and Later Deposits* (The British School of Archaeology at Athens, Suppl. Vol. 10), Oxford.
- Brandt, H.  
1992 *Gesellschaft und Wirtschaft Pamphylens und Pisidiens im Altertum* (Asia Minor Studien 7), Bonn.
- Bru, H. – G. Labarre – M. Özşait  
2009 “La Constitution Civique de Tymandos”, *Anatolia Antiqua* 17: 187-207.
- Buckler, W. H. *et al.*  
1933 *Monumenta Asia Minoris Antiqua* IV, Manchester.
- Cohen, G. M.  
1995 *The Hellenistic Settlements in Europe, the Islands, and Asia Minor*. Berkeley.
- Çokay-Kepçe, S. “The Pottery from Burdur Uylupınar Necropolis”, *ADALYA* 12: 29-76.
- Collignon, M.  
1879 “Inscriptions de Pisidie et de Pamphylie”, *BCH* 3: 333-47.
- Cook, R.M. – Dupont, P.  
1998 *East Greek Pottery*, London.
- Drew-Bear, Th.  
2008 “Arameia, Konana, Pisidia Antiocheia’sından Yeni Yazıtlar”, *Araştırma Sonuçları Toplantısı* 26, Ankara 26-30 Mayıs 2007, Ankara: 147-54.
- Ersoy, Y.E.  
1993 *Clazomenae: The Archaic Settlement*, Bryn Mawr, (UMI Ann Arbor, MI 48103).
- French, D.H.  
1991. “Sites and Inscriptions from Phrygia, Pisidia and Pamphylia”, *Epigraphica Anatolica* 17: 51-68.
- Goldman, H. *et al.*  
1963 *Excavations at Gözlükule. Tarsus III. The Iron Age Settlement*, Princeton.
- Hanfmann, G.M.A.  
1956 “On Some Eastern Greek Wares found at Tarsus”, *The Aegean and the Near East. Studies Presented to H.Goldman on the Occasion of Her Seventy-fifth Birthday*, Locust Valley, N.Y.: 165-184.  
1978 “Lydian Relations with Ionia and Persia”, E. Akurgal (ed.), *The Proceedings of the Xth International Congress of Classical Archaeology*, Ankara – İzmir, 23-30/IX/1973, Ankara: 23-35.

- Hürmüzlü, B.  
2007 “Pisidia Bölgesinde Ele Geçen Anthemion Tipi Steller”, *CollAn* VI: 97-114.
- 2009a “Remarks on Cultural Interactions in the Earlier Periods of North West Pisidia”, H. Löhr – G. Mehnert – A. Slawisch – A. Mehnert – R. Einicke – St. Lehmann (eds.), *Zurück zum Gegenstand. Festschrift für Andreas E. Furtwängler, Schriften des Zentrums für Archäologie und Kulturgeschichte des Schwarzmeerraumes, hrsg. von F. Bertemes u. A. E. Furtwängler, Bd. 16, 2, Langenweißbach: 493-500.*
- 2009b “Preliminary Report on Results of the Isparta Archaeological Survey 2008: New Investigations at Pisidian Tymandos”, *CollAn* VIII (same band).
- Kerschner, M.  
2005 “Die Ionier und ihr Verhältnis zu den Phrygern und Lydern. Analyse der literarischen, epigraphischen und numismatischen Zeugnisse”, E. Schwertheim – E. Winter (eds.), *Neue Forschungen zu Ionien (Asia Minor Studien 54)*, Bonn: 113-146.
- L'vov-Basirov, O. P.  
2001 “Achaemenian Funerary Practices in Western Asia Minor, T. Bakır – H. Sancisi-Weerdenburg – G. Gürtekin – P. Briant – W. Henkelman (eds.), *Achaemenid Anatolia. Proceedings of the First International Symposium on Anatolia in the Achaemenid Period, Bandırma, 15-18 August 1997*, Leiden: 101-107.
- Mitchell, S.  
1976 “Requisitioned Transport in the Roman Empire”, *JRS* 66: 106-131.  
1991 “The Hellenization of Pisidia”, *Mediterranean Archaeology* 4: 119-145.
- Özsait, M.  
1980 *İlkçağ Tarihinde Pisidya*, İstanbul.  
1987 “1984 ve 1985 Yılı Isparta Çevresi Tarihöncesi Araştırmaları”, 4. *Araştırma Sonuçları Toplantısı*, Ankara 26 – 30 Mayıs 1986, Ankara: 323 – 333.
- Plough, G.  
1973 *The Aegean, Corinthian and East Greek Pottery and Terracottas. Sukas II*, Copenhagen.
- Price, S.R.F.  
1984 *Rituals and Power. The Roman Imperial Cult in Asia Minor*, Cambridge.
- Rott, H.  
1908 *Kleinasiatische Denkmäler aus Pisidien, Pamphylien, Kappadoken und Lykien*, Leipzig.

Schlotzhauer, U. *et al.*

2008 “Weihungen an Apollon Didymeus and Apollon Milesios in Naukratis”, R.Bol – U.Höckmann – P.Schollmeyer (eds.), *Kult(ur) kontakte. Apollon in Milet/Didyma, Histria, Myus, Nukratis und auf Zypren. Akten der Table Ronde in Mainz vom 11. - 12. März 2004*. Rhaden/Wstf.: 163-178.

Schuler, C.

1996 *Ländliche Siedlungen und Gemeinden im hellenistischen und römischen Kleinasien*, München.

Sterrett, J.R.S.

1888a *An Epigraphical Journey in Asia Minor*, Papers of The American School of Classical Studies at Athens 2, 1883/84. Boston.

1888b *The Wolfe Expedition to Asia Minor*, Papers of The American School of Classical Studies at Athens 3, 1884/85. Boston.

Syme, R.

1995 *Anatolica. Studies in Strabo*, A. Birley (ed.), Oxford.

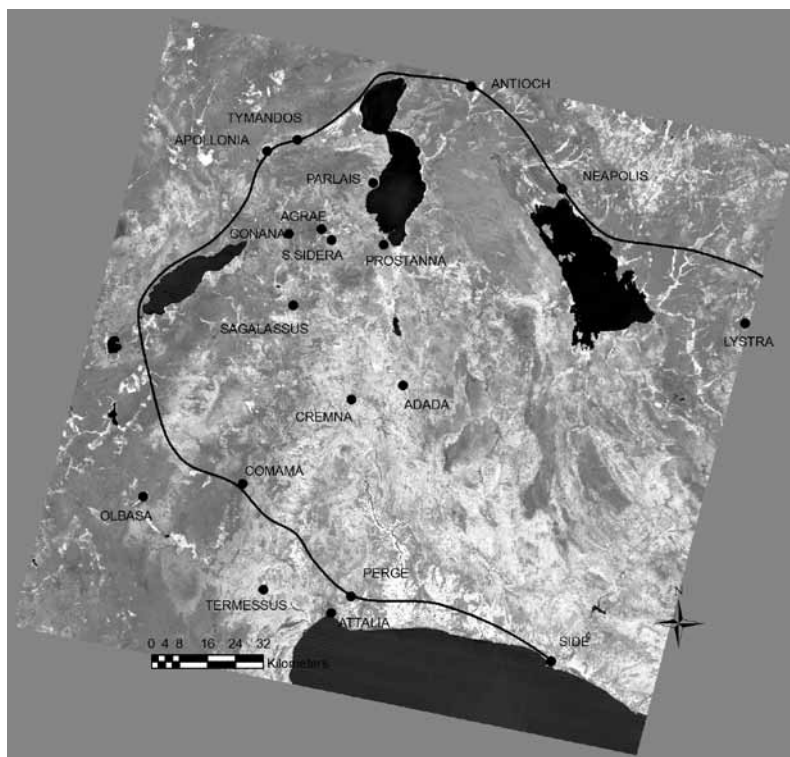


Fig. 1 General Map of Pisidia and Via Sebaste (by A. De Giorgi, IAS Archive)

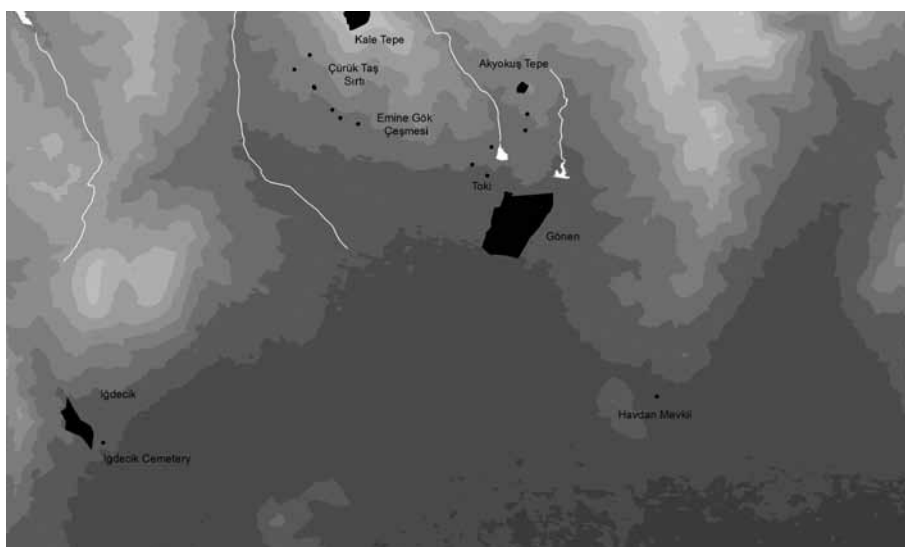


Fig. 2 Konane and Its Territory (by A. De Giorgi, IAS Archive)



Fig. 3 *Konane and Modern Gönen from the air (Photo: M. Rumor, IAS Archive)*



Fig. 4 *Kale Tepe and Akyokuş Tepe (Quickbird Scene Digital Globe, IAS Archive)*



*Fig. 5*  
Fortification  
System at Kale  
Tepe (Photo:  
B. Hürmüzlü,  
IAS Archive)



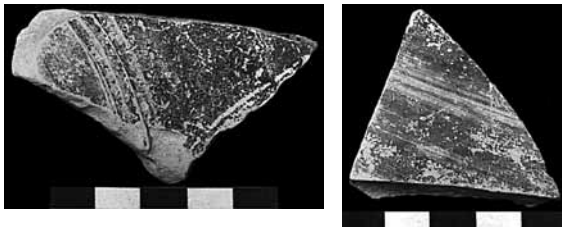
*Fig. 6*  
Çürüktaş Sırtı  
Area (Photo:  
A. De Giorgi,  
IAS Archive)



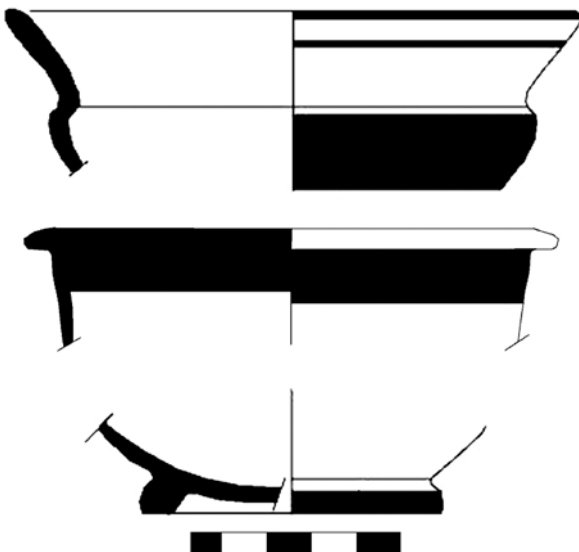
*Fig. 7*  
Hellenistic Pottery  
from Çürüktaş  
Sırtı Area  
(Photo: B. Kalfa,  
IAS Archive)



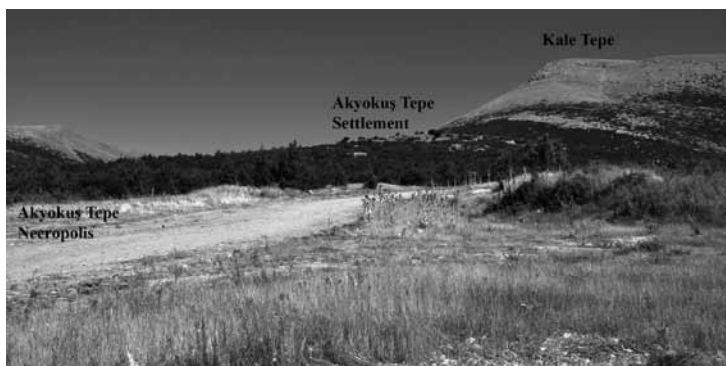
*Fig. 8*  
*Archaic Pottery from Southwest Valley of Kale Tepe Area*  
*(Photo: B. Kalfa, IAS Archive)*



*Fig. 9 a, b*  
*Examples of Streaked Ware from the Southwest Valley of Kale Tepe Area*  
*(Photo: B. Kalfa, IAS Archive)*



*Fig. 10*  
*Archaic Pottery from Southwest Valley of Kale Tepe Area*  
*(Drawing: A. Inan, IAS Archive)*



*Fig. 11  
Kale Tepe and  
Akyokuş Tepe  
from the East  
(Photo: B. Hürmüzlü,  
IAS Archive)*



*Fig. 12  
Havdan Area  
from Southeast  
and the Road to  
Seleukeia Sidera  
(Photo: A. De Giorgi,  
IAS Archive)*



*Fig. 13  
Milestone 1  
(Photo: P. Iversen,  
IAS Archive)*



*Fig. 14  
Milestone 2  
(Photo: P. Iversen,  
IAS Archive)*