



# Broadband Matching via Reflection Coefficient Modeling

Metin ŞENGÜL

Kadir Has University, Dept. of Electrical and Electronics Engineering,  
Faculty of Engineering and Natural Sciences, 34083, Cibali-Fatih, Istanbul, Turkey  
Tel: +90-212-533-6532, Fax: +90-212-533-4327

msengul@khas.edu.tr

**Abstract:** In this paper, a practical method is presented to design broadband matching networks via reflection coefficient modeling. In the proposed algorithm, reflection function values ( $\rho_2$ ) at sample frequencies are optimized to get the desired gain level. At the same time, the corresponding reflection coefficient values ( $S_2$ ) are calculated and modeled. Then matching network topology and element values are obtained via the formed reflection coefficient expression. An example is presented to explain the usage of the new method.

**Keywords:** Broadband Matching, Lossless Networks, Matching Networks, Modeling, Real Frequency Techniques.

## 1. Introduction

Matching a generator to a complex load impedance is to design a lossless two-port network to maximize the power transfer from the generator to the load over an interested frequency band. The matching performance of the system is best measured by means of the transducer power gain ( $TPG$ ) which is the ratio of power delivered to the load to the available power from the generator (Fig. 1).

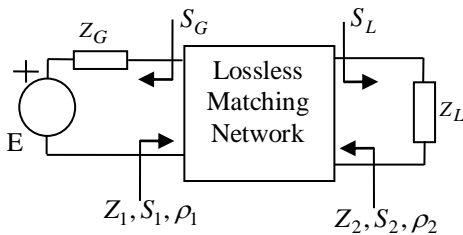


Figure 1. Double matching arrangement

In a matching problem, if the generator impedance is purely resistive and the load impedance is complex, then it is a single matching problem. But if both the generator and load impedances are complex, then the problem is a double matching problem.

In literature, there are lots of techniques to design broadband matching networks. But they can be grouped basically as the methods based on  $TPG$  optimization and the methods based on modeling.

In the first group, the selected free parameters are optimized until reaching an acceptable gain level [1-7]. In the second group, firstly the values of any selected function are calculated usually via  $TPG$  optimization, and then a model is formed for the obtained data [8, 9].

But the problem of the methods in the second group is to obtain a realizable data set. Otherwise, the data set cannot be modeled. In the proposed method, both  $TPG$  optimization and modeling are realized at the same time, not sequentially. So it is guaranteed to obtain a realizable data set. In the next section, the rationale of the proposed method is described.

## 2. Rationale of the proposed method

Consider the double matching arrangement shown in Fig. 1. Input reflection function ( $\rho_1$ ) can be defined as

$$\rho_1 = \frac{Z_1 - Z_G^*}{Z_1 - Z_G} \quad (1)$$

where  $Z_1$  is the input impedance seen at port 1 when port 2 is terminated in the load ( $Z_L$ ),  $Z_G$  is the generator impedance and the upper asterisk denotes complex conjugation.

In a similar manner, the reflection function ( $\rho_2$ ) at port 2 can be defined as

$$\rho_2 = \frac{Z_2 - Z_L^*}{Z_2 - Z_L} \quad (2)$$

where  $Z_2$  is the output impedance seen at port 2 when port 1 is terminated in  $Z_G$ .

Since the two-port is lossless, on the imaginary axis of the complex frequency plane, it can be written that

$$|\rho_1|^2 = |\rho_2|^2. \quad (3)$$

The transducer power gain at real frequencies can be defined as

$$TPG(\omega) = 1 - |\rho_1|^2 = 1 - |\rho_2|^2. \quad (4)$$

Now let us define the reflection coefficients  $S_G$  and  $S_1$  at port 1 as

$$S_G = \frac{Z_G - 1}{Z_G + 1}, S_1 = \frac{Z_1 - 1}{Z_1 + 1}. \quad (5)$$

Substituting the relationships from (5) in (1) yields the reflection coefficient at port 1 as a function of  $S_G$  and  $\rho_1$  as follows

$$S_1 = \frac{\rho_1(S_G^* - 1) + S_G^*(S_G - 1)}{\rho_1 S_G(S_G^* - 1) + (S_G - 1)}. \quad (6)$$

In a similar manner, let us define the reflection coefficients  $S_L$  and  $S_2$  at port 2 as

$$S_L = \frac{Z_L - 1}{Z_L + 1}, S_2 = \frac{Z_2 - 1}{Z_2 + 1}. \quad (7)$$

Substituting the relationships from (7) in (2) yields the reflection coefficient at port 2 as a function of  $S_L$  and  $\rho_2$  as follows

$$S_2 = \frac{\rho_2(S_L^* - 1) + S_L^*(S_L - 1)}{\rho_2 S_L(S_L^* - 1) + (S_L - 1)}. \quad (8)$$

$S_1$  and  $S_2$  can be expressed in terms of the scattering parameters ( $S_{ij}$ ,  $i, j = 1, 2$ ) of the two-port, the reflection coefficient of the load and that of the generator as

$$S_1 = S_{11} + \frac{S_{12}S_{21}S_L}{1 - S_{22}S_L}, \quad (9)$$

$$S_2 = S_{22} + \frac{S_{12}S_{21}S_G}{1 - S_{11}S_G}. \quad (10)$$

Here the scattering parameters of the lossless matching network can be written in terms of three real polynomials by using the well known Belevitch representation as follows [7]

$$S(p) = \begin{bmatrix} S_{11}(p) & S_{12}(p) \\ S_{21}(p) & S_{22}(p) \end{bmatrix} \quad (11)$$

$$= \frac{1}{g(p)} \begin{bmatrix} h(p) & \mu f(-p) \\ f(p) & -\mu h(-p) \end{bmatrix}$$

where  $p = \sigma + j\omega$  is the classical complex frequency variable,  $h$  is a polynomial with real coefficients,  $g$  is a strictly Hurwitz polynomial,  $f$

is a real monic polynomial and  $\mu$  is a unimodular constant ( $\mu = \pm 1$ ). If the two-port is reciprocal, then the polynomial  $f$  is either even or odd and  $\mu = f(-p)/f(p)$ .

The polynomials  $f$ ,  $g$ ,  $h$  are related by the Feldtkeller equation [2]

$$g(p)g(-p) = h(p)h(-p) + f(p)f(-p). \quad (12)$$

It is clear from (12) that the Hurwitz polynomial  $g(p)$  is a function of  $f(p)$  and  $h(p)$ . If the polynomials  $f(p)$  and  $h(p)$  are specified, then the scattering parameters of the two-port network, and then the network itself can be completely defined.

In almost all practical applications, the designer has an idea about the transmission zero locations of the matching network. Hence the polynomial  $f(p)$  which is constructed on the transmission zeros is usually defined by the designer. For practical problems, the designer may use the following form of  $f(p)$

$$f(p) = p^{m_1} \prod_{i=0}^{m_2} (p^2 + a_i^2) \quad (13)$$

where  $m_1$  and  $m_2$  are nonnegative integers and  $a_i$ 's are arbitrary real coefficients. This form corresponds to ladder type minimum phase structures, whose transmission zeros are on the imaginary axis of the complex  $p$ -plane.

So if the values of  $\rho_2$  are initialized, they are optimized until reaching the desired  $TPG$  via (4). Also at each iteration,  $S_2$  values are calculated via (8) and modeled simultaneously via (10) in terms of three real polynomials  $h$ ,  $g$  and  $f$ . The crux of the method is to model the calculated  $S_2$  data as  $\rho_2$  values are optimized. A similar approach can be defined in terms of  $\rho_1$  and  $S_1$ .

As the result, the following algorithm can be proposed to solve both single and double broadband matching problems with lumped elements. But the same algorithm can easily be adapted to design distributed or mixed element broadband matching networks.

### 3. Proposed Algorithm

#### Inputs:

- $Z_{L(measured)} = R_{L(measured)} + jX_{L(measured)}$ ,
- $Z_{G(measured)} = R_{G(measured)} + jX_{G(measured)}$ : Measured load and generator impedance data, respectively.
- $\omega_{i(measured)}$ : Measurement frequencies,
- $\omega_{i(measured)} = 2\pi f_{i(measured)}$ .
- $T_f$ : Desired flat  $TPG$  level.
- $f_{norm}$ : Normalization frequency.
- $R_{norm}$ : Impedance normalization number in ohms.

- $\rho_2 = \alpha_2 + j\beta_2$ : Initial values of the reflection function at port 2 at all sample frequencies.
- $h_0, h_1, h_2, K, h_n$ : Initial real coefficients of the polynomial  $h(p)$ . Here  $n$  is the degree of the polynomial which is equal to the number of lossless lumped elements in the matching network. The coefficients can be initialized as  $\pm 1$  in an ad hoc manner or the approach explained in [10] can be followed.
- $f(p)$ : A polynomial constructed on the transmission zeros of the matching network. A practical form is given in (13).
- $\delta_c$ : The stopping criteria of the sum of the square errors.

**Outputs:**

- Analytic form of the input reflection coefficient of the lossless matching network,  $S_{11}(p) = h(p) / g(p)$ .
- Circuit topology of the lossless matching network with element values: The circuit topology and element values are obtained as the result of the synthesis of  $S_{11}(p)$ . Synthesis is carried out in Darlington sense. That is,  $S_{11}(p)$  is synthesized as a lossless two-port which is the desired matching network [11]. Also the synthesis process can be carried out by using impedance based Foster or Cauer methods via  $Z_{11}(p) = (1 + S_{11}(p)) / (1 - S_{11}(p))$  as explained in [12].

**Computational Steps:**

**Step 1:** Normalize the measurement frequencies with respect to  $f_{norm}$  and set all the normalized angular frequencies  $\omega_i = f_{i(measured)} / f_{norm}$ .

Normalize the measured load and generator impedances with respect to impedance normalization number  $R_{norm}$ :

$$R_L = R_{L(measured)} / R_{norm}, \quad X_L = X_{L(measured)} / R_{norm},$$

$$R_G = R_{G(measured)} / R_{norm}, \quad X_G = X_{G(measured)} / R_{norm}$$

over the entire frequency band.

**Step 2:** Obtain the strictly Hurwitz polynomial  $g(p)$  from (12). Then calculate scattering parameters via (11).

**Step 3:** Calculate the values of the output reflection coefficient via (8) and (10) as  $S_2^{(8)}$  and  $S_2^{(10)}$ , respectively..

**Step 4:** Calculate the errors via  $\varepsilon_1(\omega) = (\text{Re}(S_2^{(8)}) - \text{Re}(S_2^{(10)}))^2$ ,

$$\varepsilon_2(\omega) = (\text{Im}(S_2^{(8)}) - \text{Im}(S_2^{(10)}))^2 \quad \text{and}$$

$$\varepsilon_3(\omega) = (1 - T_f - |\rho_2|^2)^2, \quad \text{then} \quad \delta = \varepsilon_1 + \varepsilon_2 + \varepsilon_3,$$

where  $\text{Re}(\cdot)$  and  $\text{Im}(\cdot)$  means the real and imaginary part of  $(\cdot)$ , respectively.

**Step 5:** If  $\delta$  is acceptable ( $\delta \leq \delta_c$ ), stop the algorithm and synthesize  $S_{11}(p)$ . Otherwise,

change the initialized values of  $\rho_2$  and the coefficients of the polynomial  $h(p)$  via any optimization routine and return to step 2.

**4. Example**

In this section, a double-matching example is presented for the design of a practical broadband matching network. The normalized load and generator impedance data are given in Table I. It should be noted that the given load data can easily be modeled as a capacitor  $C_L = 4$  in parallel with a resistance  $R_L = 1$  (i.e.  $R_L // C_L$  type of impedance), and the generator data as an inductor  $L_G = 1$  in series with a resistance  $R_G = 1$  (i.e.  $R + L$  type of impedance). Since the given impedance data are normalized, there is no need for a normalization step. The same example is solved here via SRFT and the method proposed in [7].

Table I  
Given normalized load and generator impedance data

$\omega$	$R_L$	$X_L$	$R_G$	$X_G$
0.0	1.0000	0.0000	1.0000	0.0000
0.1	0.8621	-0.3448	1.0000	0.1000
0.2	0.6098	-0.4878	1.0000	0.2000
0.3	0.4098	-0.4918	1.0000	0.3000
0.4	0.2809	-0.4494	1.0000	0.4000
0.5	0.2000	-0.4000	1.0000	0.5000
0.6	0.1479	-0.3550	1.0000	0.6000
0.7	0.1131	-0.3167	1.0000	0.7000
0.8	0.0890	-0.2847	1.0000	0.8000
0.9	0.0716	-0.2579	1.0000	0.9000
1.0	0.0588	-0.2353	1.0000	1.0000

The values of the reflection function at port 2 are initialized as  $\rho_2 = \alpha_2 + j\beta_2 = 1 + j$  at all sample frequencies, and the polynomial  $h(p)$  is initialized as  $h(p) = p^4 + p^3 + p^2 + p + 1$  in an ad hoc manner. Also the polynomial  $f(p)$  is selected as  $f(p) = 1$ , since a low-pass matching network is desired. In this example, using Fano's or Youla's relations [13, 14], the ideal flat gain level  $T_{f,ideal}$  is computed as

$$T_{f,ideal} = 1 - e^{-2\pi / R_L C_L \omega_c} = 1 - e^{-2\pi / 1 \cdot 4} = 0.7921.$$

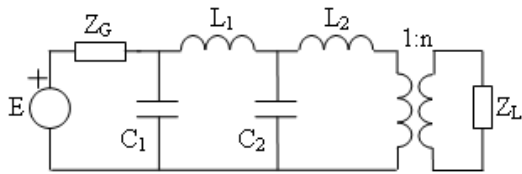
Then the desired flat TPG level is selected as  $T_f = 0.8$ . After running the proposed algorithm, the following scattering parameter of the matching network is obtained  $S_{11}(p) = h(p) / g(p)$

where

$$h(p) = -2.8694 p^4 - 2.6721 p^3 + 0.0197 p^2 - 1.7685 p + 0.4937,$$

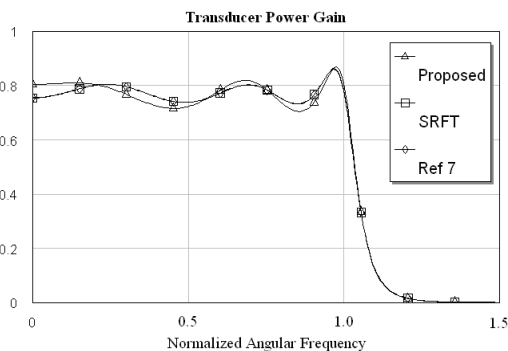
$$g(p) = 2.8694 p^4 + 6.2213 p^3 + 5.4806 p^2 + 3.9157 p + 1.1152,$$

If the obtained scattering parameter or the corresponding impedance function is synthesized, then the matching network seen in Fig. 2 is obtained.



**Figure 2.** Designed lumped-element double matching network; Proposed:  $L_1 = 1.7841$ ,  $L_2 = 1.6678$ ,  $C_1 = 1.6169$ ,  $C_2 = 1.9165$ ,  $n = 0.6220$ , SRFT:  $L_1 = 1.9422$ ,  $L_2 = 1.8911$ ,  $C_1 = 1.519$ ,  $C_2 = 1.724$ ,  $n = 0.5811$ , Ref [7]:  $L_1 = 1.9415$ ,  $L_2 = 1.8861$ ,  $C_1 = 1.5209$ ,  $C_2 = 1.7261$ ,  $n = 0.5817$ , (normalized).

As seen in Fig. 3, initial performance of the matched system looks fairly good. However, it can be further improved via optimization utilizing the commercially available design package called Microwave Office of Applied Wave Research Inc. (AWR) [15]. For comparison purpose, the performance obtained via the proposed method here, via SRFT and via the proposed method in [7] are depicted in Fig. 3.



**Figure 3.** Performance of the matched system designed with lumped elements.

The algorithm is implemented via Matlab and the problem is solved ten times. The average elapsed time for this example is 67.9217 seconds. It is 20.0936 seconds via SRFT and 21.8058 sec via the method proposed in [7]. Since  $TPG$  optimization and modeling are implemented simultaneously at each iteration, it is a natural consequence to have the largest elapsed time for the proposed method here.

The ripple factor  $\tau^2$  for the curves in the passband can be calculated as

$$\begin{aligned}\tau_{proposed}^2 &= \frac{TPG_{max} - TPG_{min}}{TPG_{min}} \\ &= \frac{0.8688 - 0.7050}{0.7050} = 0.2323,\end{aligned}$$

$$\tau_{SRFT}^2 = \frac{0.8606 - 0.7328}{0.7328} = 0.1744,$$

$$\tau_{Ref[7]}^2 = \frac{0.8626 - 0.7320}{0.7320} = 0.1784.$$

It can be said that the proposed method in [7] and SRFT have nearly the same performance. On the other hand, the ripple factor in the proposed method is a bit larger than the other ripple factors. But it can be still concluded that the proposed method here generates pretty good initials for the commercially available design packages.

## 5. Conclusions

The proposed method consists of two major parts;  $TPG$  optimization and modeling. In the first part, for the selected flat transducer power gain level, reflection coefficient ( $S_2$ ) values of the matching network is generated as a data set. In the second part, this data set is modeled as a bounded real reflection coefficient. The crux of the method is to realize these two parts at each iteration simultaneously to guarantee to get a realizable network.

Finally, the obtained reflection coefficient expression ( $S_{11}$ ) or the corresponding impedance expression ( $Z_{11}$ ) is synthesized as a lossless two-port yielding the desired matching network topology with initial element values. Eventually, the actual performance of the matched system is improved by means of a commercially available CAD tool.

The features of the proposed method can be explained as follows: The polynomial  $f(p)$  is constructed by using the transmission zeros of the matching network, so they are under the control of the designer. Also the proposed method is applicable to solve both single and double matching problems with lumped, distributed or mixed elements.

An example has been presented here to construct a broadband matching network with lumped elements. It was shown that the proposed method generates very good initials to further improve the matched system performance by working on the element values.

## 6. References

- [1] H. J. Carlin, "A new approach to gain-bandwidth problems", *IEEE Trans. CAS*, 23, 170-5, 1977.
- [2] H. J. Carlin, P. P. Civalleri, "Wideband Circuit Design", CRC Pres LLC, 1998.
- [3] H. J. Carlin, B. S. Yarman, "The double matching problem:Analytic and real frequency solutions", *IEEE Trans. Circuits and Systems*, 30, 15-28, 1983.
- [4] H. J. Carlin, "Parametric representation of brune functions", *Int. J. Circuit Theory and Appl.*, 7, 113-9, 1979.
- [5] B. S. Yarman, "A simplified real frequency technique for broadband matching complex generator to complex loads", *RCA Review*, 43, 529-41, 1982.
- [6] B. S. Yarman, H. J. Carlin, "A simplified real frequency technique applied to broadband multistage microwave amplifiers", *IEEE Trans. MTT*, 30, 2216-22, 1982.
- [7] M. Şengül, "Design of practical broadband matching networks with lumped elements", *IEEE Trans. CAS-II:Express Briefs*, 60(9), 552-6, 2013.
- [8] B. S. Yarman, M. Şengül, A. Kılınc, "Design of practical matching networks with lumped elements via modeling", *IEEE Trans. CASI: Regular Papers*, 54(8), 1829-37, 2007.
- [9] M. Şengül, "Modeling based real frequency technique", *Int. J. Electron. Commun. (AEU)*, 62(2), 77-80, 2008.
- [10] M. Şengül, B. S. Yarman, C. Volmer, M. Hein, "Design of distributed element RF filters via reflectance data modeling", *Int. J. Electron. Commun. (AEU)*, 62, 483-9, 2008.
- [11] M. Şengül, "Synthesis of resistively terminated LC ladder Networks", *İstanbul University-J. Electrical-Electronics Eng.*, 11(2), 1407-12, 2011.
- [12] W. C. Yengst, "Procedures of modern networks synthesis", The Macmillian Company, 1964.
- [13] R. M. Fano, "Theoretical limitations on the broadband matching of arbitrary impedances", *J. Franklin Inst.*, 249, 57-83, 1950.
- [14] D. C. Youla, "A new theory of broadband matching", *IEEE Trans. Circuit Theory*, 11, 30-50, 1964.
- [15] AWR, Microwave Office of Applied Wave Research Inc., [www.appwave.com](http://www.appwave.com).



**Metin ŞENGÜL** was born in Turkey. He received his B.Sc. and M.Sc. degrees in Electronics Engineering from İstanbul University in 1996 and 1999, respectively. He completed his Ph.D. in 2006 at Işık University, also in İstanbul, Turkey. He was employed as a technician at İstanbul University from 1990 to 1997 and worked as a circuit design engineer at the R&D Labs of the Prime Ministry Office of Turkey between 1997 and 2000. After that, he was a lecturer and assistant professor at Kadir Has University in İstanbul between 2000 and 2010. Currently, he is an associate professor at Kadir Has University and his areas of research include microwave matching networks/amplifiers, device modeling, circuit design via modeling and network synthesis. Assoc.Prof. Şengül was a visiting researcher at the Institute for Information Technology, *Technische Universität Ilmenau*, in Ilmenau, Germany for six months in 2006. Also in 2014, he was a visiting researcher at *Bergische Universität Wuppertal*, Germany.