



## Determination of Population Development and Infestation Rate of The Beet Armyworm [*Spodoptera exigua* (Lepidoptera: Noctuidae)] in Sugarbeet Fields in Ilgın (Konya) District

Emine KAYA<sup>1,\*</sup>, Levent ÜNLÜ<sup>1</sup>

<sup>1</sup>Selçuk University, Faculty of Agriculture, Department of Plant Protection, Konya, Turkey

### ARTICLE INFO

#### Article history:

Received date: 21.06.2019

Accepted date: 31.07.2019

#### Edited by:

Murat KARACA; *Selçuk University, Turkey*

#### Reviewed by:

Erdal SARIKAYA; *Bolu Abant İzzet Baysal University, Turkey*

Halil KÜTÜK; *Hatay Mustafa Kemal University, Turkey*

#### Keywords:

Infestation rate,  
Ilgın,  
Pheromone trap,  
Population,  
*Spodoptera exigua*,  
Sugarbeet

### ABSTRACT

This study was carried out in sugar beet fields (Centrum, Düger and Karaköy) in the center of Ilgın, the district of Konya between the years of 2017-2018. With this study, it is aimed to determine infestation rate, the first adult emergence time, adult population abundance, adult population peaks and adult activity duration in nature, which are essential criteria required for the management of Beet armyworm [*Spodoptera exigua* (Lep.: Noctuidae)] in Ilgın. The population development of *S. exigua* was monitored by sexual attractive pheromone traps. As a result of the study, it was determined that the adults of *Spodoptera exigua* were first caught in sexual attractive traps in the first half of May. In order to determine the infestation rate caused by the pest, weekly beans were sampled from the period of sugarbeet with 8-10 leaves. The adult population peaked twice during the all years, including June and July. The date when adults were caught in traps was in the first half of September every two years. With these results, it was determined that *S. exigua* adults were active in nature for at least four months (May-September). The average infestation rate of the fields in 2017-2018 was 0.0- 0.1%, 0.1- 0.1% in Düger and 0.2- 0.2% in Karaköy, respectively. Although the population of the pest does not increase every year, it might create an outbreak in some years. It is recommended that our producers continuously monitor the population of the pest.

### 1. Introduction

Sugar beet (*Beta vulgaris* L.) is a two-year, summer industrial crop from the family of Chenopodiaceae. Sugar Beet is not only the raw material of industry, but also a fodder crop with its leaf, head and pulp which is very valuable food in livestock fattening. It is grown as a raw material of sugar in our country (Özer & Ertunç 2005).

Sugar beets are produced in 55 countries around the world, Turkey ranks 5th with 6.2% market share. Sugar beet, which ranks second in terms of the added value it provides in industrial crops, is a rotation crop and has been cultivated every four years since 2001. Sugar beet production in 2017 was 21 million 149 thousand tons and 29% of this production was realized in Konya (Tosun, 2018).

Beet armyworm is within the order of Lepidoptera (Noctuidae). The species among pests especially from the order of Lepidoptera, due to the damage they have

created in recent years has begun to attract attention. As a result of the study, it is determined that Şanlıurfa is rich in the species of Noctuidae family and *S. exigua*, which is one of the important pests, has caused economic damages in the cotton areas of Şanlıurfa (Ünlü & Kornoşor 2003).

*Spodoptera exigua* polyphag is a pest and its host range includes cotton, corn, sunflower, tobacco, vegetables; and chenopodium album, black nightshade, celosia argentea among weeds. It can also be pest in forest and fruit trees (Anonymous, 2008). There are a number of studies on *S. exigua*, which have been reported by various investigators (Hassanein et al., 1972; Aarvik, 1981; Stewart et al., 1996) that it causes significant damages to different host plants in various ecosystems including potatoes. For example, Kiray (1964) reported that this species caused damage not to be underestimated in many cultigens in our country, especially in industrial crops. Iyriboz (1971) and Sertkaya et al. (2004) reported that it is one of the most important pests of cotton fields in our country but it has also caused significant damage in potato areas in various parts of our country. Yıldırım et al. (1998) reported

\* Corresponding author email: [emine21012@gmail.com](mailto:emine21012@gmail.com)

that they cause significant damage in sugar beet fields in Erzurum and its surroundings.

Sugar beet is one of the leading products in Konya and its surroundings due to the fact that ecological conditions in Ilgın (Konya) district are suitable for sugar beet production and there is a sugar factory in the district. This issue has been studied because there has been no study on the development of beet armyworm populations in sugar beet areas in the Konya region.

## 2. Materials and Methods

### 2.1 Materials

The main material of the study is the sugar beets grown in the Ilgın district and the beet armyworm living on these plants. In the study, the sex pheromone traps (1.5 mg E.E-8.10-dodecadien-1-ol) have been used.

### 2.2 Method

#### 2.2.1 Determination of trial fields

In the study, a total of nine sampling areas were chosen. There were chosen three fields for each region in the center of Ilgın, in Düger and Karaköy.

#### 2.2.2 Determination of adult population development of *Spodoptera exigua*

This study was carried out in nine different fields for two years in 2017 and 2018 in order to determine *Spodoptera exigua*'s adult population development in three sugar beet fields (three fields in one region, total nine fields) located in central, Düger and Karaköy districts of Ilgın district center of Konya province. In order to determine the adult population development of *Spodoptera exigua*, sexual attractive Delta type traps were set in the second week of May (15 May) in the first year of the study and in the last week of April (25 April) in the second year of the study. One trap was placed in each field in a way to represent the field and a 1.5 m high board was placed in the field. Trap controls

were performed twice a week until the first adult was captured, and once a week after the first adult was captured, the number of captured moths was recorded. Pheromone capsules were replaced with new ones every six weeks. Adhesive trays under the trap were changed when necessary by considering the adhesive properties.

#### 2.2.3 Determination of infestation rate of *Spodoptera exigua* in sugar beet

The determination of the infestation rate of beet armyworm in sugar beet was started from the moment when larvae and / or damage were observed in the plants in sugar beet fields. 25 plants were checked in all fields in the nine locations where the trials were carried out in such a way that will represent the field each week. When eggs, larva and / or larval damage were observed on the controlled plants, these plants were accepted as infested and the percentage of infestation of the fields was calculated.

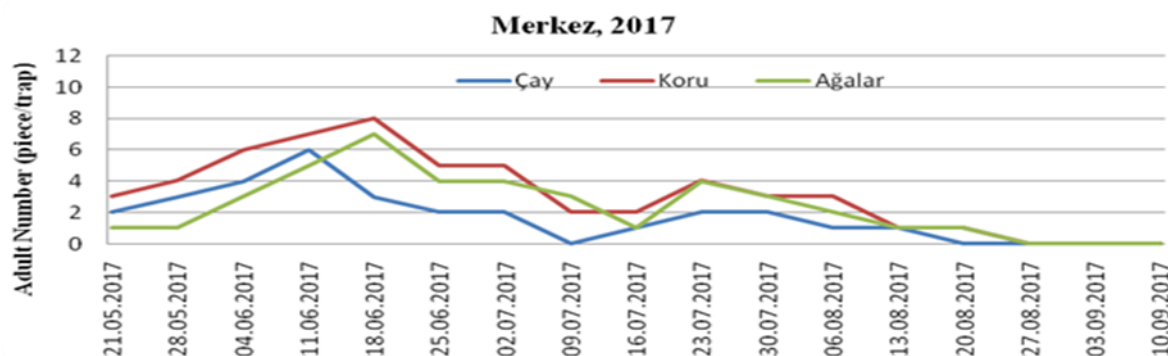
## 3. Results and Discussion

As a result of the study conducted in order to determine the population development of the beet armyworm and the rate of infestation, it has been determined that the pest population is low in Ilgın and causes little damage.

#### 3.1. Determination of Adult Population Development of *Spodoptera exigua*

Traps were set on May 15th in 2017 and in April 25 in 2018 to determine the population development of beet armyworm in Sugar Beets. It was determined that the moths were caught on May 17 in the traps which were set on May 15 in order to determine the population development of sugar beet armyworms. In 2018, it was determined that the adult was caught on 13 May.

The population development of *Spodoptera exigua* in the centrum in 2017 and 2018 is given in Figure 1.



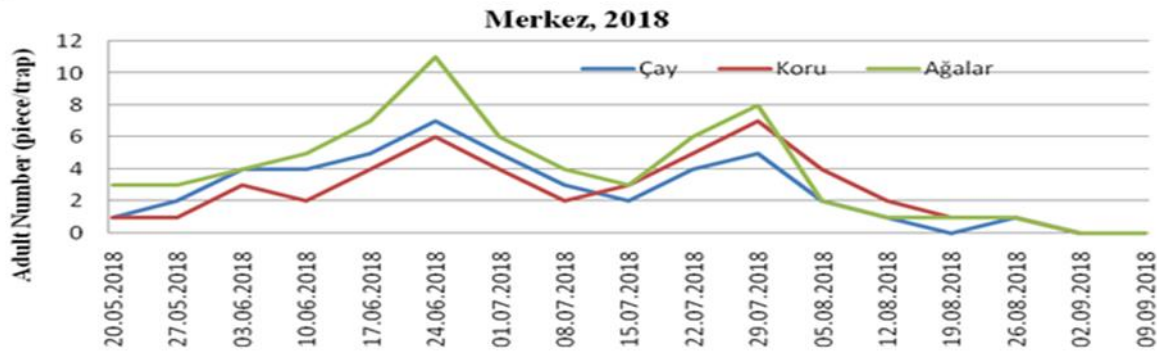


Figure 1 Population development of beet armyworm in sugar beet in the center of Ilgın in 2017-2018

In 2017, the beet armyworm adults in the sugar beet field in Çay, Koru and Agalar locations were first caught in pheromone traps on 17 May. The number of adults in the pheromone traps throughout the year was peaked twice in the second week of June and in the last week of July in each of the fields. Then, the population continued decreasingly. *Spodoptera exigua* was caught 8 times per week in Koru. The last date when adults were caught in the traps was determined as August 20.

In 2018, the beet armyworm adults in the sugar beet field locations were first caught in pheromone traps on

13 May in Agalar. The number of pest year was peaked twice on June 24 and on July 29 in each of the three fields. Then, the population continued decreasingly. The maximum number of *Spodoptera exigua* caught per week was 11 in Agalar location. The last date when adults were caught in the traps was determined as August 26 in Koru and Agalar (Figure 1).

Figure 2 shows the population development of *Spodoptera exigua* in 2017 and 2018 in Düğer location.

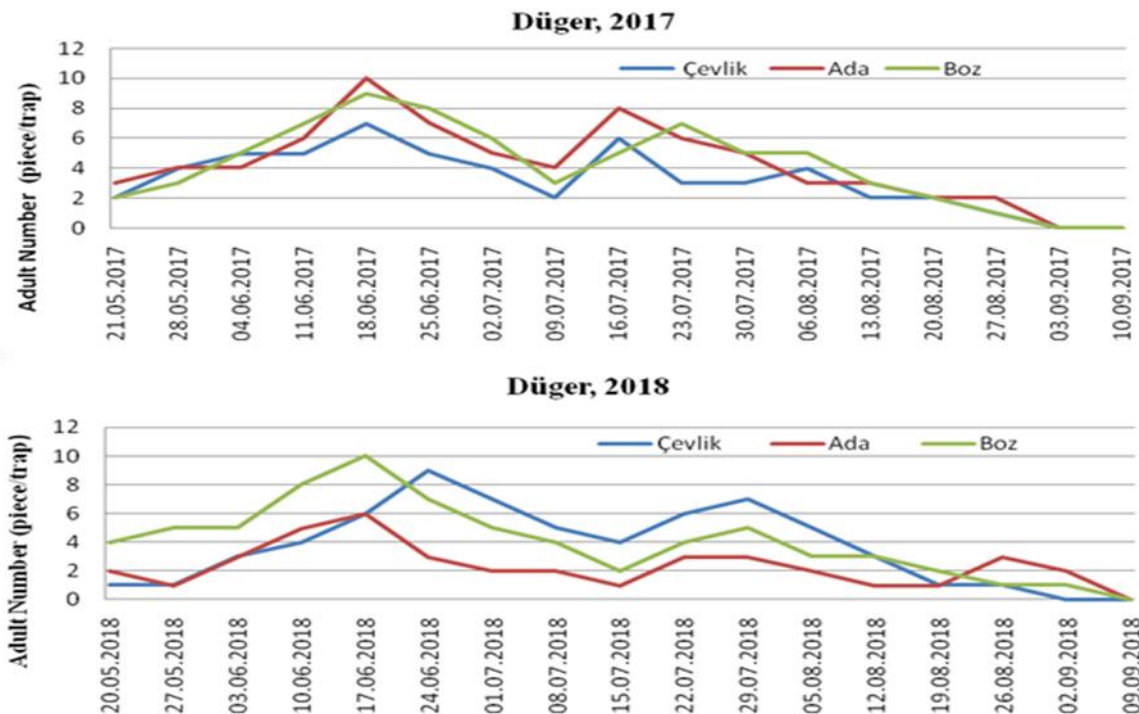


Figure 2 Population development of *Spodoptera exigua* in 2017 and 2018 in sugar beet in the location of Düğer

In 2017, the beet armyworm adults in the sugar beet field locations were first caught in pheromone traps on May 17 in Düğer. The number of pest year was peaked twice on June 18 and in the second half of July in each of the three fields. Then, the population continued decreasingly. The maximum number of *Spodoptera exigua* caught per week was 10 in Ada location. The

last date when adults were caught in the traps was determined as August 27.

In 2018, the beet armyworm adults in the sugar beet field locations were first caught in pheromone traps on May 16 in Ada location. The number of adults in the pheromone traps throughout the year was peaked twice in the second half of June and in the last week of July

in each of the fields. Then, the population continued decreasingly. The maximum number of *Spodoptera exigua* caught per week was 10 in Boz location. The last date when adults were caught in the traps was determined as September 2 in Ada and Boz (Figure 2).

Figure 3 shows the population development of *Spodoptera exigua* in 2017 and 2018 in Karaköy location.

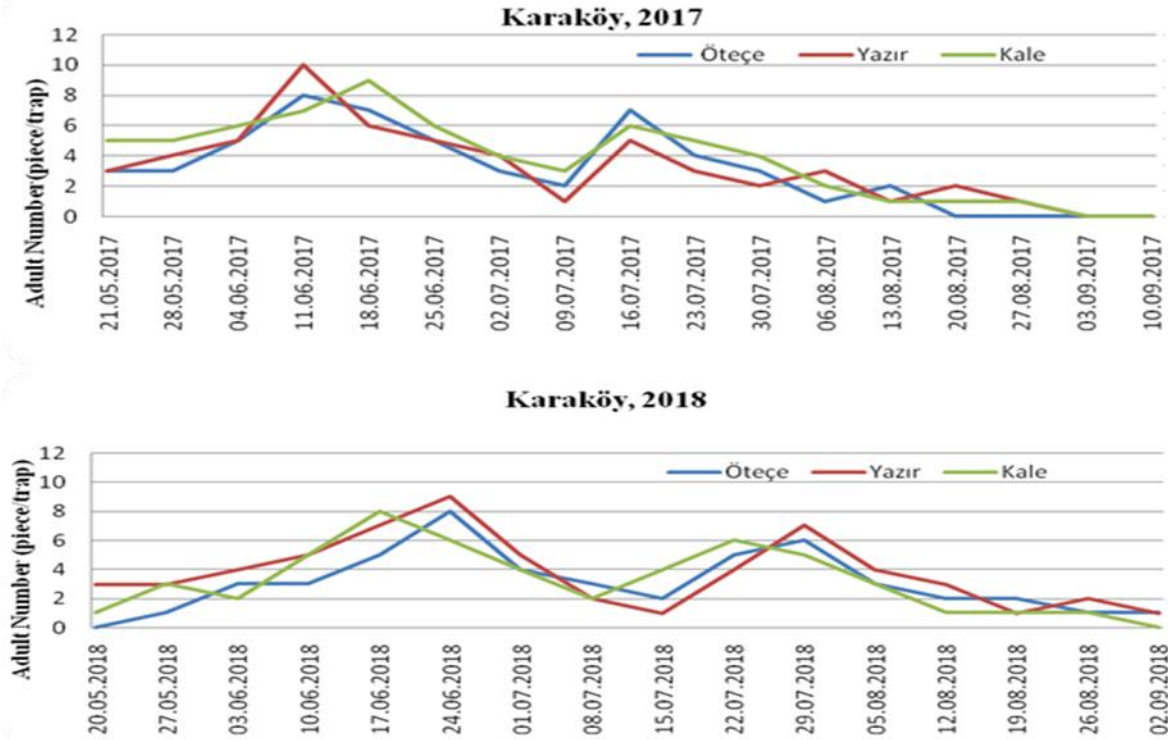


Figure 3

Population development of *Spodoptera exigua* in 2017 and 2018 in sugar beet in the location of Karaköy

In 2017, the beet armyworm adults in the sugar beet field locations were first caught in pheromone traps on May 17 in Karaköy. The number of pest year was peaked twice on June 11 and on July 16 in each of the three fields. Then, the population continued decreasingly. The maximum number of *Spodoptera exigua* caught per week was 10 in Yazır location. The last date when adults were caught in the traps was determined as August 27.

In 2018, the beet armyworm adults in the sugar beet field locations were first caught in pheromone traps on May 16 in Yazır location. The number of adults in the pheromone traps throughout the year was peaked twice in the second half of June and in the last week of July in each of the fields. Then, the population continued decreasingly. The maximum number of *Spodoptera exigua* caught per week was 9 in Yazır location. The last date when adults were caught in the traps was determined as September 2 in Öteçe and Yazır locations (Figure 3).

In the Centrum, Düğer and Karaköy, where the study was conducted, it was determined that the first flight of the beet armyworm was seen in the first half of May in 2018 and it parallel the year 2017. The pests who peaked twice in each of the three sampling areas

in 2017-2018 started to decrease in the first half of July. It then peaked second time, lower than the first. In this study, it was determined that the beet armyworm population in 2018 decreased in Düğer and Karaköy compared to 2017 and increased in the Centrum. Due to the increase in sunflower cultivation areas, the other host of the pest in the centrum in 2018, it is thought to be effective in increasing the population level in 2018. In Düğer and Karaköy, population levels decreased compared to the previous year. The reason for this is that 2018 may be rainy compared to 2017.

In the study, it was determined that the first adults were caught by sexual attractive traps in the first half of May. Indeed, Atlıhan et al. (2003) reported that the first adult flight of beet armyworm in Erciş and Muradiye was observed in June in a study conducted in potato fields, and similarly, a study conducted in a cotton field in Bismil District of Diyarbakır Province reported that *S. exigua* moths began to appear in sexual attractive traps on June 11 (Göven & Gümüş, 1998). According to the technical instruction of agricultural control, it was reported that the mature adults spending the winter in the maize plant began to be seen towards the end of April (Anonim 2008).

In 2017-2018, when the study was carried out, the time when the adult population was the most intense was determined as the middle of June and the end of July. It was reported that *S.exigua*, which caused significant damages in potato fields in Van province in 1998-1999, caused epidemic in 1998 and reached the highest population density in the season in late June and early July (Atlıhan et al 2003). In a study conducted on soybean in 1981-1982 in Çukurova, while soybean plants had 3-4 leaves, *S. exigua*'s population increased (Özdemir & Uzunali 1981).

When it was decided to work in the fields in locations in 2017, the first year of the study, in interviews with producers, the producers stated that they did not encounter any significant damage of sugar beet armyworm. As a matter of fact, it was determined in our study, as well. In a study conducted in 1981-1982 in Çukurova, since there was no significant increase in

Table 1

*Spodoptera exigua* infestation rate in Ilgın between years of 2017 and 2018 (%).

Years	Centrum (±SE)			Düger (±SE)			Karaköy (±SE)		
	Çay	Koru	Ağalar	Çevlik	Ada	Boz	Öteçe	Yazır	Kale
2017	0.0±0.0	0.0±0.0	0.0±0.0	0.0±0.0	0.4±0.016	0.0±0.0	0.4±0.016	0.4±0.016	0.0±0.0
2018	0.0±0.0	0.0±0.0	0.4±0.016	0.0±0.0	0.0±0.0	0.4±0.016	0.4±0.016	0.4±0.016	0.0±0.0

In the Center, it was started from the period when the sugar beet had 8-10 leaves and during the weekly controls it was found that there was no infestation in the Çay and Koru locations in 2017-2018. While any infestation was not observed in Ağalar in 2017, the average infestation rate in 2018 was 0.4%.

In Düger, no infestation was seen in the sugar beet leaves in Çevlik location in 2017-2018. In Ada location, infestation was observed in the first week of August in 2017 and the average infestation was found to be 0.4%. In 2018, no infestation was seen. In Boz location, no infestation was seen in 2017 and infestation rate was determined as 0.4% in 2018.

In the weekly controls in Karaköy, Öteçe and Yazır locations, infestation rate was determined as 0.4% on 30.07.2017 and in the first week of August 2018. The average infestation was seen in 2017 in both locations and was found to be 0.4% in 2018. In Kale location, no infestation was observed in both years of the study.

In 2017-2018 when the study was conducted, infestation was seen in the Center on 12.08.2018, it was seen in Düger in both years in the first week of August, it was seen in Karaköy at the end of July and in the first week of August, and the average infestation was determined as 0.4. In a study carried out in maize fields in Çukurova, it was reported that the densest developmental stages of *S. exigua* larvae were the stages when they were with 2-4, 4-6 leaves (Güllü 2000). *S. exigua* larvae were found in the two-leaved stage of maize in Çanakkale and there was density in early seedling and middle rifling periods (Tiftikci & Kornoşor 2015). Beet armyworm larvae were densely observed in the cotton field in Bismil District of Diyarbakır Province on June 18 and 22 (Göven & Gümüş, 1998). In a study on pest

pest population in soybean plants, it was seen as an insignificant pest in soybean, however, if we consider the fact that the increase in the population of *S. exigua* in Çukurova coincides with the emergence of the soybean and that there is increase in the population of cotton from time to time in the past years, it is possible that there will be a significant pest in soybean plant (Turhan et al. 1983). In another study, *S. exigua* has been reported to be harmful, important lepidoptera species in maize-grown fields (Özdemir & Uzunali 1981).

### 3.2 Determination of pest infestation rate

The amount of infestation seen in the gardens mainly shows the material loss caused by the beet armyworm for the producer. The infestation rate of *S. exigua* in 2017-2018, when the study was conducted, is given in Table 1.

lepidoptera larvae in maize in Southeastern Anatolia, *S.exigua* larvae were found in the fields from July to September in 2003 and from the end of July to mid-September in 2004. During the study, it was observed that *S. exigua* larvae caused damage to the second crop maize which was sown late (Gözüaçık & Mart, 2009). In a study conducted on potato fields in Van province, *S.exigua* larvae were found on June 17 in Erciş and Muradiye (Atlıhan et al 2003).

## 4. Conclusions

When the results of the population development of *S.exigua* conducted in the fields of Ilgın district center and locations in 2017-2018 are evaluated, the first adult flight was seen in the first half of May and the last adult flight was seen in the last week of August and the first week of September. The adult population peaked twice in June (11 units / week) and July (8 units / week) during the year. In the light of this information, it is concluded that beet armyworm can give two offspring because the first offspring are seen as from June. In this study, it was determined that adults of *S.exigua* remained active for approximately 4 months from mid-May to the first week of September.

Considering the population and infestation rates of the pests, there was no significant increase of beet armyworms in the fields during the years of the research and it was found below the recommended economic thresholds and the sugar beet armyworm was considered as an insignificant pest for Ilgın district. In both years of the study, no spraying was recommended as there was not enough infestation to control with pesticide in Ilgın district.

This pest is known as "Caradrina" among people because it causes serious damages in sugar beet by eating the leaves during the early seedling period. In the control, it is recommended to apply pesticide when there are 2 larvae/plants on average in 25 plants (Anonim, 2008). However, it is known that some pesticides are ineffective and pests gain resistance against some pesticides. For this reason, farmers are advised to use pesticides after consulting with experts. If spraying is performed correctly against first-stage generations, the reproduction and emergence of subsequent generations will be prevented. This is why first spraying is very important. It is necessary to follow these warnings to avoid damage to subsequent products. Since there was no significant increase in the population of pests in sugar beet plants in 2017-2018 when the research was carried out, it was not seen as an economic pest in sugar beet, but given the increase in the population of pests in sugar beet from time to time as in 2014, it is likely that there is a significant probability of pests in sugar beet. It is therefore a pest that needs to be constantly monitored

## 5. References

- Aarvik L (1981). The migrant moth *Spodoptera exigua*(Hubner) (Noctuidae: Lepidoptera) recorded in Norway. Fauna Norv., 28: 90-92.
- Anonymous (2008). Ziraat Mücadele Teknik Talimatları. Tar. Gıda ve Hayvancılık, 1. Cilt: 116-119s
- Atlıhan R, Yardım EN, Özgökçe MS, Kaydan MB (2003). *Spodoptera exigua* (Hübner) (Noctuidae: Lepidoptera)'nın Van İli Patates Alanlarındaki Popülasyon Gelişmesi ve Doğal Düşmanları. Yüzüncü Yıl Üniversitesi, Ziraat Fakültesi, Tarım Bilimleri Dergisi. (J. Agric. Sci.) 13 (1):39-43.
- Göven M, Gümüş S (1998). Diyarbakır (Bismil) İli Pamuk Alanlarında Zararlı Pamuk Çizgili Yaprakkurdu *Spodoptera exigua* (Hübner) (Lep.: Noctuidae)'nın Doğal Düşmanları Üzerinde Bir Gözlem, Bitki Koruma Bülteni, 1998, 38 (3-4) :117-120 ISSN 0406-3597.
- Gözüaçık C, Mart C (2009). Güneydoğu Anadolu Bölgesi'nde Mısırdaki zararlı bazı Lepidoptera larvalarının doğal parazitlenme oranlarının belirlenmesi, Bitki Koruma Bülteni 2009, 49(3): 107-116
- Güllü M (2000). Çukurova'da mısırdaki zararlı Lepidoptera türlerinin farklı mısır çeşitlerindeki popülasyon gelişmeleri üzerinde araştırmalar, Ç.Ü. FBE. Doktora Tezi, Adana, 198 s.
- Hassanein MH, Khalil FM, El-Naby AA (1972). Abundance and population density of three lepidopterous insects in the Upper-Egypt (Noctuidae: Lepidoptera), Bull. Soc. Entomol. Egypte, 55: 79-83.
- İyriboz NŞ (1971). Pamuk Zararlıları ve Hastalıkları, Ticaret Matbaacılık T.A.Ş., İzmir, 103s.
- Kıray Y (1964). Çizgili Pamuk Yaprakkurdu (Karadrina) (*Laphygma exigua* Hbn.) Yaşayışı ve Mücadelesi, Tarım Bakanlığı Zir. Müc. Ens. Yay. No. 20, Adana, 27s
- Özdemir N, Uzunali S (1981). Noctuid species causing damage to Maize in Turkey. EPPO Bull. 11 (2): 97-99.
- Özer G, Ertunç F (2005). Amasya şeker fabrikası şeker pancarı ekim alanlarında *Rhizomania* hastalığının belirlenmesi. Tarım Bilimleri Dergisi, 11(3):339-343.
- Sertkaya E, Bayram A, Kornoşor S (2004). "Egg and Larval Parasitoids of the Beet Armyworm *Spodoptera exigua* on Maize in Turkey," *Phytoparasitica*, 32(3), 305-312.
- Shahean AH (1980). Survey of pests attacking soybean plant in Egypt with some ecological notes. Rev. Appl. Entomol., 68 (2):10-13.
- Stewart SD, MB. Layton, Jr. MR. Williams (1996). Occurrence and control of beet armyworm outbreaks in the cotton belt, Proceedings, Beltwide Cotton Conference, National Cotton Council of America, Memphis, TN. 846-848
- Tiftikçi P, Kornoşor S (2015). Çanakkale'de Mısırdaki Zararlı Lepidoptera Türleri, Dağılımları ve Yayılışları Üzerinde Araştırmalar ÇOMÜ Zir. Fak. Derg. (COMU J. Agric. Fac.) 2015: 3 (2): 107-118
- Tosun F (2018). Şekerpancarı ürün raporu, Tarımsal Ekonomi ve Politika Geliştirme Enstitüsü, Yayın No: 309, 2018, Ankara
- Turhan N, Tunç A, Belli A, Kışmır A, Kısakürek N (1983). Çukurova'da Soyada böcek ve akar faunasının tespiti üzerinde çalışmalar, Bitki Koruma Bülteni Cilt 23, No. 3, Adana
- Ünlü L, Kornoşor S (2003). Şanlıurfa ilinde saptanan Noctuidae (Lepidoptera) familyası türleri ve morfolojik özellikleri, HR. Ü.Z.F. dergisi, 2003, 7(3-4):19-28
- Yıldırım E, Aslan İ, Özbek H (1998). Oltu pancar bölge şefliğine bağlı şeker pancarı ekim alanlarındaki önemli zararlı böcek türleri ve mücadeleleri, Geçmişten Geleceğe Oltu ve Çevresi Sempozyumu, (1-3 Temmuz, 1998), Oltu-Erzurum, 576-585.