

TÜRKİYE LEPİDOPTERA FAUNASI İÇİN İLKEL LİSTE : IV
THE PRELIMINARY LIST OF LEPIDOPTERA FAUNE OF TURKEY : IV

İ. Akif KANSU

Alt-takım (Suborder) : HETEROCERA

Familiya (Family) : NOCTUIDAE

Euxoa (Parastichtis) *temera hubneri* Brsn.
Sakarya (Adapazarı).

98) *Euxoa temera hubneri* Brsn.
Ankara (Hacıkadın).

98) *Euxoa* (*Agrotis*) *obesa* Bsd.
Ankara, Artvin (Murgul).

99) *Euxoa crassa* Hbn.
Niğde (Merkez).

100) *Euxoa trifida* Fab.
Ankara (Merkez).

101) *Euxoa* (*Agrotis*) *spinifera* Hbn.
Seyhan (Adana, Dört Yol).

102) *Euxoa* (*Agrotis*) *segetum* Schiff.
Artvin (Murgul), İçel (Mersin), Samsun (Merkez).

103) *Euxoa hastifera* Donz.
İstanbul (Tepebağ), Seyhan (Adana).

104) *Euxoa puta renitens* Hbn.
İzmir (Bornova).

105) *Euxoa trux terranea* Frr.
Niğde (Merkez).

- 106) *Euxoa conspicua* Hbn.
Yer belli değil (No exact locality).
- 107) *Euxoa tritici eruta* Hbn.
Bolu (Gerede).
- 108) *Euxoa vestigialis* Rott.
Ankara (? Merkez), Eskişehir (? Merkez), Niğde (Merkez).
- 109) *Feltia (Agrotis) exclamationis* L.
Ankara (Merkez), İstanbul, Sakarya (Adapazarı), Samsun (? Merkez), Seyhan (Adana).
- 110) *Agrotis c-nigrum* L.
The Spotted Cutworm.
Artvin (Murgul).
- 111) *Agrotis ypsilon* Rott.
The Greasy Cutworm, The Black Cutworm.
Ankara (Merkez, Keçiören), Artvin (Murgul).
- 112) *Rhyacia (Agrotis) ravidata* Schiff.
Ankara (Merkez-Hacıkadın).
- 113) *Lycophotia (Agrotis) saucia* Hbn.
The Variegated Cutworm.
Ankara (Merkez, Bakanlıklar), Artvin (Murgul), İstanbul (Göztepe).
- 114) *Triphaena (Agrotis) pronuba* L.
The Large Yellow underwing.
Artvin (Murgul), İzmir (? Merkez), Malatya (Merkez).
Triphaena pronuba innuba Tr.
Ankara (Merkez).
- 115) *Agrotis janthina* Schiff.
The Lesser Broad-bordered Yellow Underwing.
Malatya (? Merkez).
- 116) *Heliothis virescens* Hufn. (*Chloridea dipsacea* L.)
Ankara (Merkez).
- 117) *Heliothis armigera* Hbn. (= *obsoleta* Fab.)
The Cotton-Boll Worm, The Corn-ear Worm.
Ankara (Atatürk Orman Çiftliği), Artvin (Murgul), İçel (Gülner), Seyhan (Adana).
- 118) *Heliothis (Chloridea) peltigera* Schiff.
Ankara (Merkez, Etlik, Mucur), Artvin (Murgul), Muğla (Dalaman), Samsun (? Merkez), Seyhan (Adana).
- 119) *Heliothis nubigera* H.-S.
Malatya (? Merkez).

- 120) *Melicleptria* (*Heliothis*) *scutosa* Schiff.
Bursa (? Merkez).
- 121) *Orthosia* *caecimacula* Schiff.
Artvin (Murgul).
- 122) *Xylena* (*Chariclea*) *delphini* L.
Ankara (Merkez, Kalaba).
- 123) *Hadena* *lepida* Esp.
Ankara (? Merkez).
- 124) *Tholera* *popularis* Fab.
Bingöl (Merkez).
- 125) *Epia* *nisus* Germ.
Ankara (Merkez).
- 126) *Cardepi* *irrisor* Ersch.
Ankara (Merkez).
- 127) *Orthosia* (*Monima*) *stabilis* View.
Ankara (Kızılcahamam).
Orthosia *stabilis* *pallida* Tutt.
Ankara (Kızılcahamam).
- 128) *Orthosia* *miniosa* Fab.
Ankara (Kızılcahamam).
- 129) *Orthosia* *incerta* *subsetaceus* Haw.
Ankara (Kızılcahamam).
- 130) *Orthosia* *rorida* Friv.
Ankara (Kızılcahamam), İzmir (Bornova).
- 131) *Mamestra* (*Miselia*) *oleracea* L.
Ankara (? Merkez), Artvin (Murgul).
- 132) *Polia* *luteago* *brunneago* Esp.
Giresun (? Merkez), İstanbul (Göztepe).
- 133) *Polia* *dissimilis* Knock. (*Miselia* *sausa*) Bkh.).
Ankara (Merkez), Niğde (? Merkez).
- 134) *Polia* *spinaciae* View.
Ankara (Merkez), Seyhan (Adana).
- 135) *Polia* *proxima* Hbn.
Ankara (Merkez).
- 136) *Antitype* (*Polia*) *genistae* Bks.
Niğde (Merkez).
- 137) *Antitype* *rufocincta* Hbn.
Ankara (Etlik), İzmir (Bornova).

- 138) *Xylocampa areola suffusa* Tutt.
İzmir (Bornova).
- 139) *Synvaleria (Valeria) oleagina* Fab. nec Schiff.
Ankara (Kızılcahamam).
- 140) *Mythimna (Cirphis) 1-album* L.
Ankara (Merkez), Artvin (Murgul), Niğde (Merkez), Samsun (? Merkez).
- 141) *Mythimna ferrago* Fab.
Artvin (Murgul).
- 142) *Mythimna (Sideritis) vitellina* Hbn.
Ankara (Merkez), Artvin (Murgul), İstanbul (Göztepe).
- 143) *Mythimna zea* Dup.
Ankara (Etlik), İçel (Silifke).
- 144) *Leucania (Mythimna) loreyi* Dup.
Sakarya (Adapazarı).
- 145) *Allophyes asiatica* Stgr.
Ankara (Küçüksat).
- 146) *Cucullia argentina* Hufn.
Ankara (? Merkez).
- 147) *Cucullia verbasci* L.
İstanbul (Göztepe).
- 148) *Conistra torrida* Led.
Ankara (Merkez).
- 149) *Conistra erythrocephala* Fab.
Ankara (Kızılcahamam).
- 150) *Conistra vaupunctatum immaculata* Stgr.
Ankara (Kızılcahamam).
- 151) *Dasypolia fernandi* Ruhl.
Ankara (Etlik).
- 152) *Barchynycha syriaca* Warr.
Ankara (Keçiören, Hacıkadın, Etlik).
- 153) *Ulochlaena hirta* Hbn.
Ankara (Merkez).
- 154) *Aporophyla australis scriptura* Frr.
Ankara (? Merkez).
- 155) *Pachetra fulminea* Fab.
Bolu (Gerede), Niğde (Merkez).
- 156) *Derthisa (Episema) lederi* Chr.
Seyhan (Adana).

- 157) *Atethmia ambusta* Fab.
Ankara (Keçiören).
- 158) *Cleophana opposita* Led.
Ankara (Merkez).
- 159) *Xantholeuca croceago* Fab.
Ankara (Kızılcahamam).
- 160) *Amathes iners* Germ.
Artvin (Murgul).
- 161) *Apatele (Acronycta) megacephala* Schiff.
Amasya (Turhal), Ankara (Atatürk Orman Çiftliği, Beynam), Niğde (? Merkez).
- 162) *Acronycta psi* L.
Ankara (Merkez, Etimesgut), İzmir (Bornova), Sakarya (Adapazarı), Samsun (? Merkez).
- 163) *Acronycta tridens* Schiff.
Artvin (Murgul).
- 164) *Acronycta (Apatele) aceris* L.
Niğde (Merkez).
- 165) *Apatele rumicis* L.
Ankara (? Merkez), Artvin (Murgul), Samsun (? Merkez).
- 166) *Bryophila muralis* Forst.
Artvin (Murgul).
- 167) *Bryophila maenoides* Led.
Ankara (Merkez).
- 168) *Bryophila raptacula* Hbn.?
? Ankara (Merkez), Gaziantep (Nizip).
- 169) *Pyrois cinnemomea* Kleem.
Ankara (Atatürk Orman Çiftliği).
- 170) *Amphipyra pyramidea* L.
Artvin (Murgul).
- 171) *Amphipyra stix* H. - S.
Ankara (Merkez).
- 172) *Amphipyra tetra pallida* Stgr.
Ankara (? Merkez).
- 173) *Mania maura striata* Tutt.
Malatya (? Merkez).
- 174) *Dipterygia scabriuscula* L.
Artvin (Murgul).

- 175) *Parastichtis oblonga variegata* Stgr.
Artvin (Murgul).
- 176) *Oligia strigilis* Cl.
Ankara (Merkez).
- 177) *Phlogophora (Brotolomia) meticulosa* L.
Artvin (Murgul), İzmir (Bornova), Samsun (? Merkez).
- 178) *Laphygma exigua* Hbn.
The Beet Army-worm.
Ankara (Merkez), Seyhan (Adana).
- 179) *Prodenia litura* Fab.
The Cotton Worm
Hatay (İskenderun), İçel (Alata), Seyhan (Adana, Dört Yol).
- 180) *Athetis clavipalpis* Scop.
Ankara (Merkez, Keçiören, Atatürk Orman Çiftliği), Urfa (Ceylanpınar).
- 181) *Athetis anbina ? congesta* Led.
Ankara (Merkez).
- 182) *Dasycorsa (Arenostola) modesta* Stgr.
Ankara (? Merkez).
- 183) *Erastria trabealis* Scop.
Ankara (Merkez), Niğde (Merkez).
- 184) *Porphyrina respersa* Hbn.
Ankara (Merkez).
- 185) *Anua (Pseudophia) tirchaca* Cr.
Seyhan (? Osmaniye).
- 186) *Acontia lucida* Hufn.
Ankara (Merkez, ? Keçiören, Hacıkadın).
- 187) *Acontia luctuosa* Esp.
Ankara (Merkez), İstanbul (Göztepe), Niğde (Merkez), Sakarya (Adapazarı), Samsun (? Merkez), Seyhan (Adana).
- 188) *Earias insulana* Boisd.
The Spiny Boll-Worm
Antalya (? Merkez), Hatay (İskenderun), İçel (Alata, Tarsus), Seyhan (Adana, Karataş).
Earias insulana semifascia Warr.
Seyhan (Adana).
- 189) *Mormonia (Catocala) neonympha* Esp.
Ankara (Merkez).

- 190) *Catocala elocata vaga* Spul.
Ağrı (Merkez), Ankara (Merkez, Hacıkadın, Atatürk Orman Çiftliği, Deliller köyü), Antalya (Merkez), Bitlis (Tatvan), Bursa (? Merkez), Eskişehir (Merkez), Malatya (Sultansuyu), Muğla (Merkez), Niğde (Merkez), Samsun (Merkez), Sinop (Ayancık).
- 191) *Catocala conversa* Esp.
Ankara (Merkez), İzmir (Bornova), Konya (Akşehir), Seyhan (? Osmaniye).
- 192) *Catocala puerpera* Giorn (= *amasia* Esp.)
Ağrı (Merkez), Ankara (Merkez,, Hacıkadın), Diyarbakır (Sahtiköy), Eskişehir (Merkez), İstanbul (Çayırova), Niğde (Merkez).
- 193) *Ephesia disjuncta luctuosa* Stgr.
Seyhan Osmaniye).
- 194) *Minucia (Pseudophia) lunaris* Schiff.
Amasya (? Merkez).
- 195) *Dysgonia (Parallellia) algira* L.
Artvin (Murgul), Gaziantep (Kilis), Muğla (Merkez), Seyhan (Osmaniye).
- 196) *Paralellia stolidi* Fab.
Hatay (İskenderun), İzmir (Bornova), Samsun (Merkez), Seyhan (Adana, Karaisalı, Kozan).
- 197) *Parallellia geometrica* Fab.
Seyhan (Adana, Dört Yol).
- 198) *Autographa (Phytometra) gamma* L.
Ankara (Merkez, Atatürk Orman Çiftliği), Artvin (Murgul), Edirne (? Merkez), Niğde (Merkez), İstanbul (Çiftelavuzlar), Samsun (Merkez), Seyhan Dört Yol), Urfa (Ceylanpınar), Ege bölgesi (Aegean region).
- 199) *Phytometra (Plusia) chalcites* Esp.
Antalya (Merkez), İzmir (Bornova), Muğla (? Merkez).
- 200) *Phytometra confusa* Steph.
Ankara (Merkez).
- 201) *Trichoplusia (Phytometra) ni* Hbn.
Ankara (Merkez), Samsun (Merkez).
- 202) *Apepestes spectrum phantasma* Ev.
Ankara (Merkez), Niğde (Merkez).
- 203) *Diloba caeruleocephala* L.
Ankara (Keçiören, Etlik).
- 204) *Epicimelia theresia* Korb.
Niğde (Merkez).
- 205) *Scoliopteryx libatrix* L.
Artvin (Murgul).
- 206) *Acantholipes regularis* Hbn.
Seyhan (Adana).
- 207) *Aleucanitis cailino* Lef.
Ankara (Kavaklıdere).

41. *Euxoa puta renitens* Hbn. (No. 104)

42. *Agrotis cnigrum* L. (No. 110)

43. *Agrotis ypsilon* Rott. (No. 111)

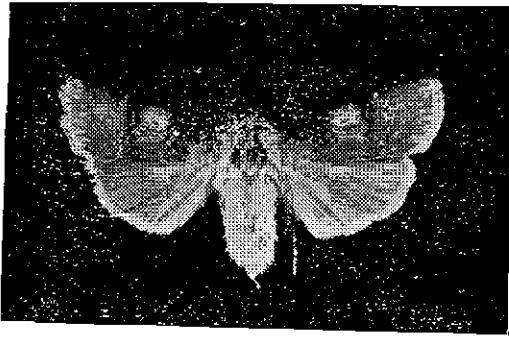
44. *Triphaena pronuba* L. (No. 114)

45. *Orthosia caecimacula* Schiff. (No. 121)

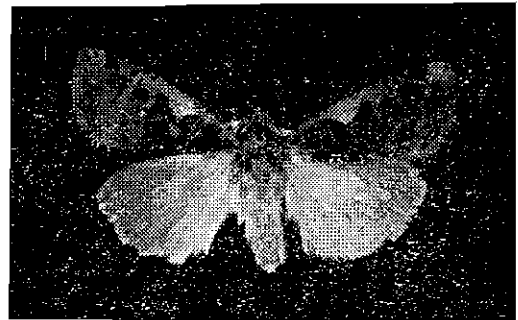
46. *Orthosia rorida* Friv. (No. 130)

47. *Polia spinaciae* View. (No. 134)

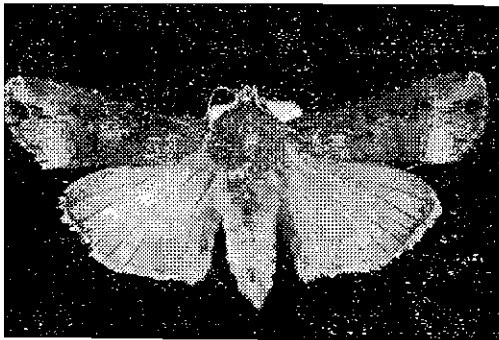
48. *Antitype genistae* Bks. (No. 136)



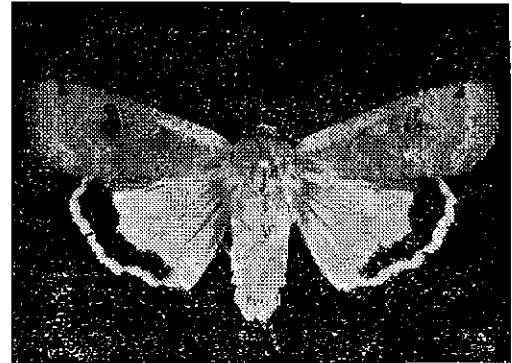
No. 41



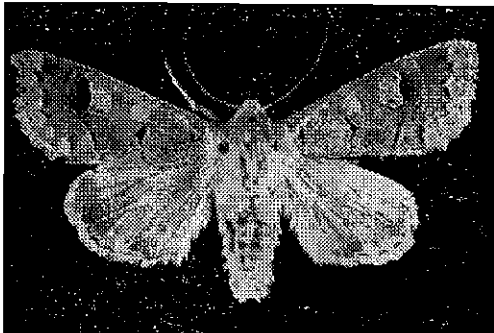
No. 42



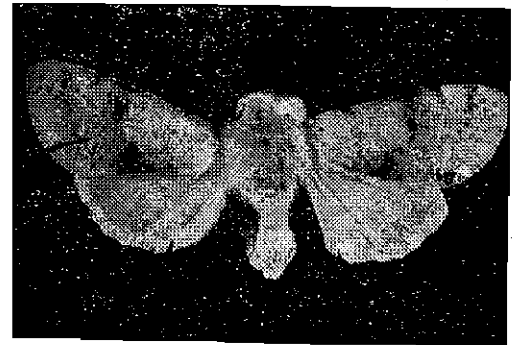
No. 43



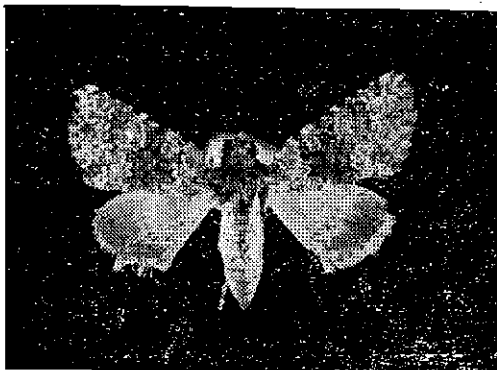
No. 44



No. 45



No. 46



No. 47



No. 48

49. *Xylocampa areola suffusa* Tutt. (No. 138)

50. *Mythimna l-album* L. (No. 140)

51. *Mythimna zea* Dup. (No. 143)

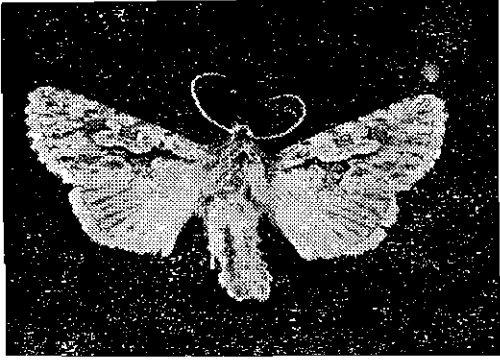
52. *Brachynycha syriaca* Warr. (No. 152)

53. *Ulochlaena hirta* Hbn. (No. 153)

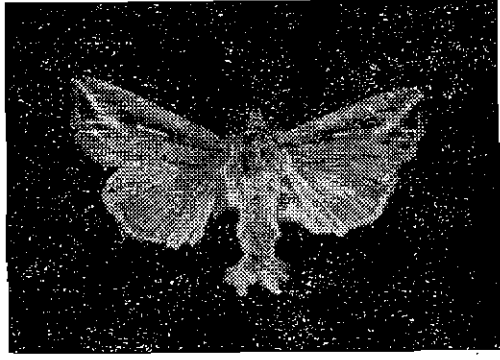
54. *Xantholeuca croceago* Fab. (No. 159)

55. *Apatele megacephala* Schiff. (No. 161)

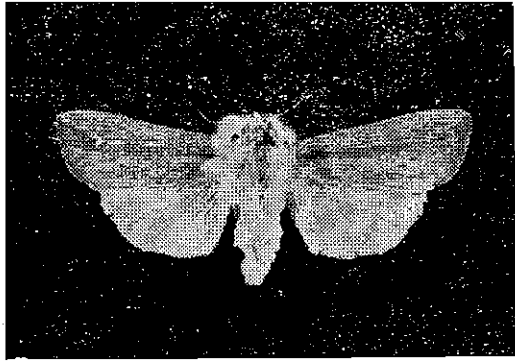
56. *Apatele rumicis* L. (No. 165)



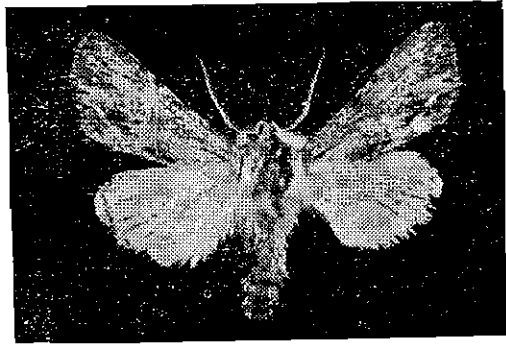
No. 49



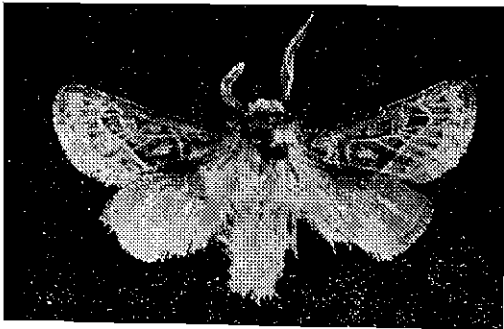
No. 50



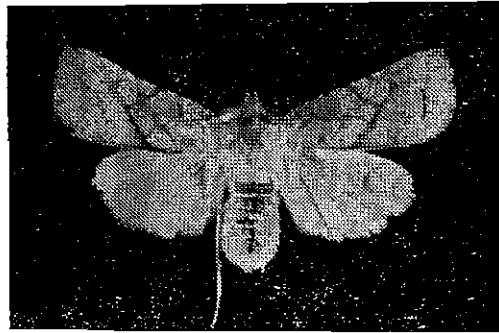
No. 51



No. 52



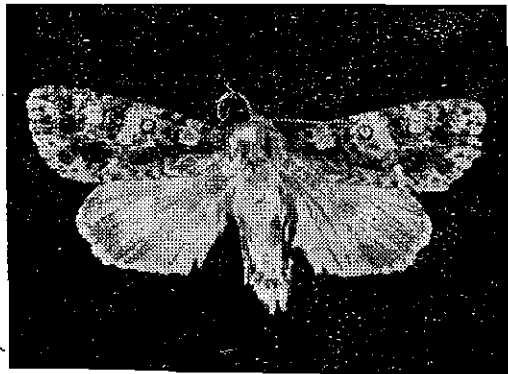
No. 53



No. 54

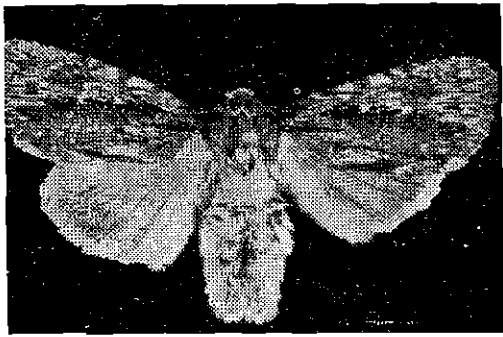


No. 55

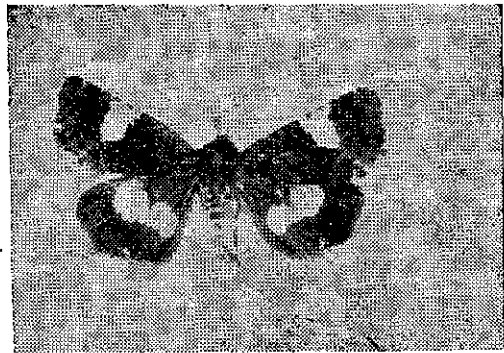


No. 56

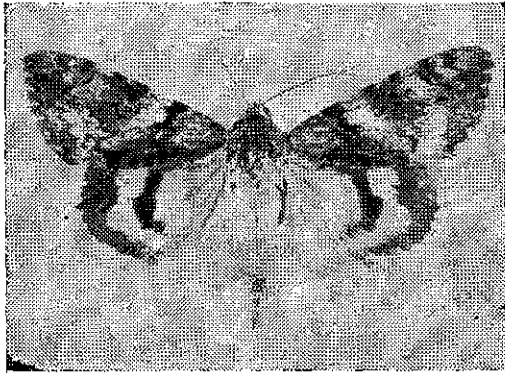
57. *Pyrois cinnemomea* Kleem. (No. 169)
58. *Acontia luctuosa* Esp. (No. 187)
59. *Catocala conversa* Esp. (No. 191)
60. *Paralellia stolidia* Fab. (No. 196)
61. *Phytometra chalcites* Esp. (No. 199)
62. *Diloba caeruleocephala* L. (No. 203)
63. *Epicimelia theresia* Korb. (No. 204)
64. *Acantholipes regularis* Hbn. (No. 206)



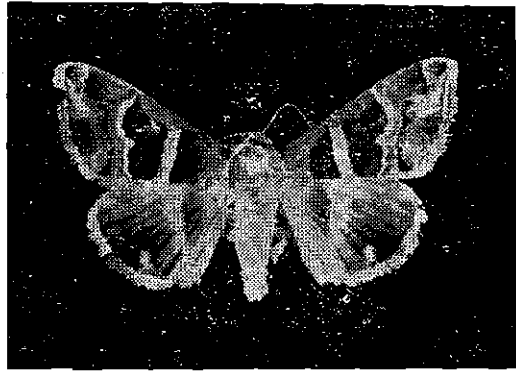
No. 57



No. 58



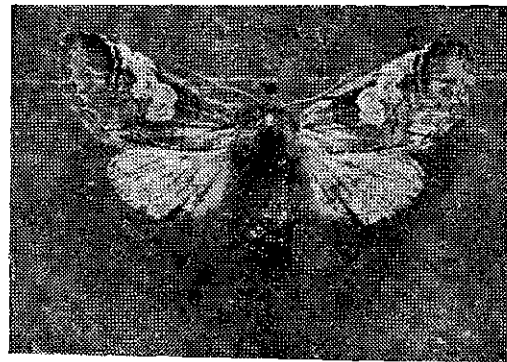
No. 59



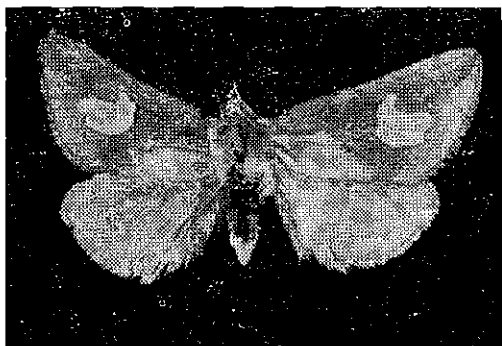
No. 60



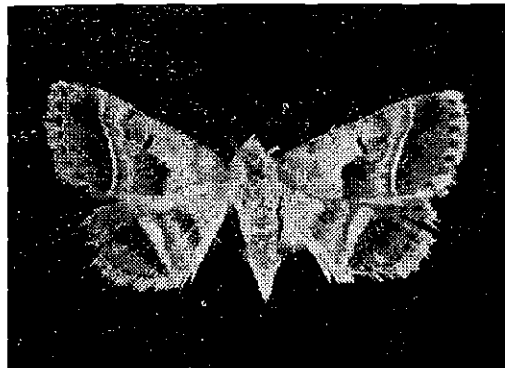
No. 61



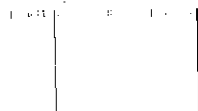
No. 62



No. 63



No. 64



TÜRKİYE LEPİDOPTERA FAUNASI İÇİN İLKEL LİSTE : V
THE PRELIMINARY LIST OF LEPIDOPTERA FAUNE OF TURKEY : V

Familya (Family) : SPHINGIDAE

208) *Celerio euphorbiae* L.

The spurge Hawkmoth.

Ankara (Merkez, Keçiören, Etimesgut), Bingöl (Merkez), Seyhan (Dört Yol), Tokat (? Merkez).

209) *Celerio hipophaes* Esp. (? *bienerti* Stgr.)

Ankara (? Merkez), Elazığ (Keban), Niğde (Merkez).

210) *Celerio lineata livornica* Esp.

The Striped Hawkmoth.

Ankara (Merkez), Artvin (Murgul), İçel (Mersin), İstanbul (Çayırova), İzmir (Bornova), Samsun (? Merkez), Urfa ? (Merkez).

211) *Herse (Sphinx) convolvuli* L.

Artvin (Murgul), Bursa (Karacabey), Kocaeli (İzmit).

212) *Daphnis (Deilephila) nerii* L.

Ankara (Merkez), Antalya (? Merkez), İçel (Tarsus), Seyhan (Adana, Osmaniye).

213) *Hyloicus (Sphinx) ligustri* L.

İzmir (Bornova).

214) *Hippotion (Chaerocampa) celerio* L.

The Silver - striped Hawkmoth.

İçel (Tarsus), Seyhan (Adana).

215) *Theretra (Deilephila) alecto* L.

Ağrı (Merkez), Ankara (Merkez, Atatürk Orman Çiftliği, Etimesgut), Antalya (Merkez, Alanya), Elazığ (Keban), Gaziantep (Merkez, Kilis), İçel (Merkez, Alata Tarsus), İzmir (Bornova), Maraş (? Merkez), Seyhan (Kozan, Osmaniye, Karaisalı), Sinop (Ayancık).

216) *Macroglossa stellatarum* L.

The Humming - bird Hawkmoth.

Ankara (Merkez, Etimesgut, Mamak, Aydos), Balıkesir (Manyas), Bingöl (Merkez), Eskişehir (Merkez), Gaziantep (Kilis), Hatay (İskenderun), İçel (Alata, Çavuşlu), İstanbul (Göztepe, Yalova - Termal), Konya (Akşehir), Sakarya (Adapazarı), Tokat (? Merkez).

217) *Rethera komarovi* Christ.

Ankara (Merkez).

218) *Acherontia atropos* L.

The Death's Head Moth.

İzmir (Bornova), Samsun (Merkez).

219) *Smerinthus kindermanni* Led.

Ankara (Merkez), Niğde (Merkez).

220) *Smerinthus ocellata* L.

Ankara (Merkez).

221) *Amorpha (Smerinthus) populi* L.

Ankara (Merkez, Keçiören, Hacıkadın, Etlik, Atatürk Orman Çiftliği), Bursa (? Merkez), İçel (Erdemli), Samsun (Merkez).

Familiya (Family) : NOTODONTIDAE

222) *Phalera bucephala* L.

Sakarya (Adapazarı), Samsun (Merkez).

223) *Cerura bicuspis* Bkh.

Ankara (Merkez, Gençlik Parkı, Atatürk Orman Çiftliği), Niğde (Merkez).

224) *Exaereta ulmi* Schiff.

Ankara (Etlik).

225) *Pygaera curtula* L.

Samsun (Merkez).

226) *Notodonta anceps* Goetz. (*Pheosia tremula* Hbn.)
Cl.)

Artvin (Murgul).

227) *Notodonta dromedarius* L.

Artvin (Murgul).

228) *Dicranura vinula* L.

Ankara (Merkez, Hacıkadın, Kızılcabamam), Artvin (Murgul), Niğde (Merkez).

Familiya (Family) : THAUMETOPOEIDAE

229) *Thaumetopoea processionnea* L.

The Oak Processionary Caterpillar.

Ankara (Kızılcabamam).

230) *Thaumetopoea pityocampa* Schiff.

The Pine Processionary Caterpillar.

İçel (Alata), İstanbul (Belgrad Ormanı).

Familiya (Family) : LYMANTRIIDAE

231) *Dasychira pudibunda* L.

Hatay (Antakya), Malatya (? Merkez).

Samsun (? Merkez).

232) *Orgyia dubia turcica* Led.

Ankara (Merkez).

233) *Stilpnotia salicis* L.

The Satin Moth.

Ankara (Merkez, Atatürk Orman Çiftliği, Gölbaşı), Eskişehir (Sivrihisar, Merkez), Konya (Ereğli).

234) *Lymantria dispar* L.

The Gipsy Moth.

Ankara (Merkez, Hacıkadın, Dikmen, Atatürk Orman Çiftliği), Artvin (Murgul), Kırklareli (? Merkez), Sakarya (Adapazarı).

235) *Lymantria monacha* L. (? lutea Auel.)

Artvin (Murgul).

236) *Lymantria lapidicola* ?mardina Stgr.

Hatay (Antakya), Malatya (? Merkez).

237) *Lymantria destituta* Stgr.

Hatay (Antakya).

238) *Euproctis chrysorrhoea* L.

Ankara (Merkez, Hacıkadın, Kızılcahamam), Eskişehir (Sivrihisar), Niğde (Merkez).

Euproctis chrysorrhoea punctigera Teich.

Giresun (Merkez), Sakarya (Adapazarı), Samsun (Merkez).

Euproctis chrysorrhoea punctella Seitz.

Ankara (Hacıkadın).

Familiya (Family) : LASIOCAMPIDAE

239) *Lasiocampa trifolii* Esp.

Ankara (Merkez), İçel (Alata).

240) *Gastropacha quercifolia* L.

Ankara (Merkez), Samsun (Merkez).

241) *Malacosoma neustria* L.

Ankara (Merkez, Keçiören, Hacıkadın), İstanbul (Göztepe).

242) *Malacosoma castrensis* L.

Ankara (? Merkez), İstanbul (? Göztepe), Sakarya (Adapazarı).

- 243) *Pachypasa otus* Drury
Ankara (Dikmen), İçel (Merkez), İzmir (Bornova), Seyhan (Kozan), Ege bölgesi (Aegean region).
Familya (Family) : LEMONIIDAE
- 244) *Lemonia ballioni* Chr.
Ankara (? Merkez).
Lemonia ballioni pontica Auriv.
Ankara (Merkez).
Familya (Family) : SATURNIIDAE
- 245) *Saturnia pyri* Schiff.
The Giant Emperor Moth.
Ankara (Merkez, Keçiören), Antalya (? Merkez), Hatay (Samandağ), Konya (Ereğli), Niğde (Merkez).
- 246) *Eudia (Saturnia) spini* Schiff.
Ankara (? Merkez).
- 247) *Perisomena (Saturnia) caecigena* Kupd.
Bingöl (Sağnıs köyü).
Familya (Family) : THYATIRIDAE
- 248) *Palimpsestis (Tethea) ocularis* L.
Ankara (Merkez, Mamak), Bolu (Abant), Hatay (Kırıkhan), Konya (Merkez).
- 249) *Habrosyne pyritoides* Hufn.
Artvin (Murgul).
Familya (Family) : GEOMETRIDAE
- 250) *Boarmia selenaria* ? *dianaria* Hbn.
İstanbul (? Göztepe), Hatay (İskenderun).
- 251) *Boarmia rhomboidaria turcosyrca* Whitt.
Artvin (Murgul).
- 252) *Boarmia lichenaria* Hufn.
Seyhan (Adana).
- 253) *Bapta distinctata orientalis* Stgr.
Ankara (Kızılcahamam).
- 254) *Eumera regina* Stgr.
Ankara (Keçiören, Hacıkadın, Dikmen)
- 255) *Campaea margaritata* L.
Artvin (Murgul).
- 256) *Ennomus quercaria* Hbn.
Kırşehir (Akpınar - Kaman)
- 257) *Opisthograptis luteolata* L.
Artvin (Murgul).

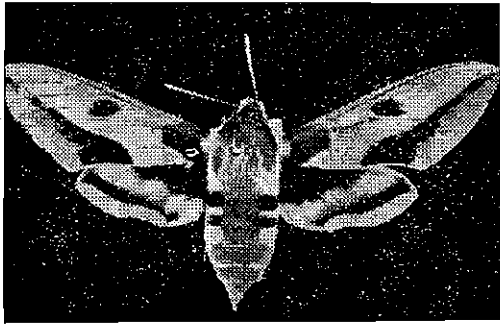
- 258) *Pseudopanthera macularia* L.
Ankara (Kızılcahamam), Bolu (Gerede).
- 259) *Crocallis ? tusciaria* Bkh.
Niğde (Merkez).
- 260) *Eilicrinia cordiaria* Hbn.
Ankara (Merkez), Malatya (? Merkez).
- 261) *Semiothisa (Macaria) aestimaria* Hbn.
Seyhan (Karşıyaka - Adana).
- 262) *Erannis (Hibernia) bajaria* Schiff.
Ankara (Keçiören, Etlik).
- 263) *Nyssia (Biston) zonaria* Schiff.
Ankara (? Merkez).
- 264) *Apocheima (Biston) hispidaria* Fab.
Ankara (Keçiören, Hacıkadın).
- 265) *Amorphogynia (Biston) necessaria* Zell.
Ankara (Çubuk barajı, ? Atatürk Orman Çiftliği), Niğde (Merkez).
- 266) *Phigalia pedaria* Fab.
The Pale Brindled Beauty.
Ankara (Hacıkadın).
- 267) *Biston (Amphidasis) betularia* L.
The Peppered Moth.
Artvin (Murgul).
- 268) *Lycia hirtaria* Cl.
The Brindled Beauty.
Ankara (Hacıkadın)
- 269) *Nychiodes lividaria* Hbn. (= *obscuraria* Vill.)
Malatya (Merkez), Seyhan (Adana).
- 270) *Neognopharmia (Gnophos) stevenaria* Boisd.
Ankara (Dikmen).
- 271) *Aspilates ochrearia* Rossi
Gaziantep (Kilis).
- 272) *Rhodometra sacraria* L.
Niğde (Merkez), Seyhan (Adana).
- 273) *Lythria purpuraria* L.
Ankara (? Merkez), Tokat (Zile).
- 274) *Anaitis columbata* Metz.
Bursa (? Uludağ).

- 275) *Euphyia bilineata testaceolata* Stgr.
Ankara (Merkez), Konya (İvriz).
- 276) *Xanthorhoe (Larentia) fluctuata* L.
Samsun (Merkez).
- 277) *Eupithecia centaureata* Schiff.
Samsun (Merkez).
- 278) *Lithostege griseata* Schiff.
Ankara (Merkez - Hacıkadın).
- 279) *Sterrha sodaliaria* H. - S.
Konya (Meram).
- 280) *Rhodostrophia auctata* Stgr.
Ankara (Esenboğa), Niğde (Merkez).
- 281) *Rhodostrophia badiaria* Freyer.
Ankara (Merkez - Hacıkadın.)
- 282) *Rhodostrophia tabidaria* Z.
Amasya (Merkez), Ankara (Merkez - Hacıkadın).
- 283) *Problepsis ocellata* Friv.
İçel (Alata), İzmir (Bornova), Seyhan (Adana).
Familya (Family) : A M A T I D A E
- 284) *Amata (Syntomis) anatolica* Zerny.
Ankara (Merkez, Keçiören, Hacıkadın, Kalaba, Çubuk barajı, Saimnekadın, Bağlum, Çankaya, Beynam, Gölbaşı, Kızılcahamam), Malatya (Merkez).
- 285) *Dysauxes punctata hyalina* Friv.
Familya (Family) : A R C T I I D A E
- 286) *Lithosia quadra* L.
Artvin (Murgul).
- 287) *Euprepia striata* L.
Samsun (Merkez).
- 288) *Utetheisa pulchella ? tenuella* Seltz
The Crimson - speckled Moth.
Ankara (? Merkez), İçel (Silifke), Malatya (Merkez), Muş (? Merkez), Seyhan (Adana, Kozan, Karataş, Osmaniye).
- 289) *Ocnogyna ? herrichii* Stgr.
Elazığ (? Merkez).
- 290) *Ocnogyna parasita* Hbn.
Ankara (Merkez).
- 291) *Phragmatobia fuliginosa placida* Friv.
Niğde (Merkez), Sakarya (Adapazarı), Samsun (Merkez).

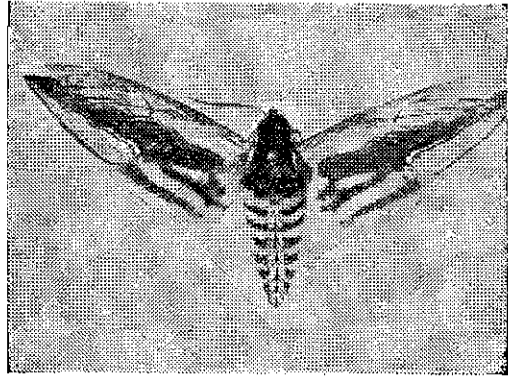
- 292) *Euprepia rivularis* Mén.
Artvin (Murgul).
- 293) *Cymbalophora* (*Euprepia*) *pudica* Esp.
Seyhan (Adana).
- 294) *Diacrisia* (*Spilosoma*) *menthastri* Esp.
Samsun (Merkez).
- 295) *Diacrisia urticae* Esp.
Samsun (Merkez)
- 296) *Arctinia caesarea* Goez (*Spilosoma luctifera* Esp.)
Bolu (Gerede).
- 297) *Diacrisia mendica* ? *rustica* Hbn.
Niğde (Merkez).
- 298) *Arctia villica* L.
Ankara (Merkez, Hacıkadın, Bağlum, Beynam), Bursa (Merkez), Eskişehir
(? Merkez).
Arctia villica angelica B.
Hatay (Reyhanlı), İzmir (Bornova), Samsun (Merkez), Sakarya (Adapazarı).
- 299) *Arctia caja* L.
Giresun (? Merkez).
- 300) *Eucharis festiva* Hufn. nec Bkh. (*Arctia hebe* L.)
Ankara (? Merkez), Niğde (Merkez), Ege bölgesi (Aegean region).
- 301) *Tyria jacobaeae* L.
Ankara (Merkez, Bağlum), Bolu (Akçakoca), Eskişehir (Lalahan), Samsun
(Merkez).
Familya (Family) : CALLIMORPHIDAE
- 302) *Euplagia quadripunctaria* Poda. (*Callimorpha hera* L.)
Artvin (Borçka, Murgul), İzmir (Çeşme), Sakarya (Adapazarı), Seyhan
(Adana).
Familya (Family) : ZYGAENIDAE
- 303) *Procris pruni* Schiff.
Seyhan (Adana)
Procris pruni amasina H. - S.
Niğde (Merkez), Samsun (? Merkez).
- 304) *Theresimima* (*Procris*) *ampelophaga* Boyle
Wine Bud Moth
Ankara (Haymana), İzmir (Bornova), Konya (Merkez).
- 305) *Zygaena purpuralis* Brun.
Ankara (Hacıkadın, Gölbaşı, Hasanoğlan)

- 306) *Zygaena filipendulae* ? ramburi Led.
Ankara (Gölbaşı).
Familya (Family) : AEGERIIDAE
- 307) *Aegeria (Alcathoe) apiformis* Cl.
The Hornet Moth.
Yer belli değil (No exact locality).
- 308) *Paranthrene (Sciapteron) tabaniformis* Rott.
Ankara (Merkez), Konya (Akşehir), Seyhan (Adana).
- 309) *Synanthedon myopaeiformis* Bkh.
Samsun (Merkez).
- 310) *Dipsosophea ichneumoniformis* Fab.
Eskişehir (? Merkez).
Familya (Family) : COSSIDAE
- 311) *Cossus cossus* L.
The Goat Moth.
Artvin (Murgul), Giresun (Merkez), Samsun (Merkez).
- 312) *Hypopta caestrum caucasicum* Gr. - Grsh.
Bursa (? Merkez).
- 313) *Dyspessa ulula* Bkh.
Giresun (Merkez), İzmir (Bornova), Sakarya (Adapazarı).
- 314) *Zeuzera pyrina* L.
The Wood Leopard Moth.
İstanbul (Çınarcık - Yalova), İzmir (Çeşme), Samsun (Merkez).

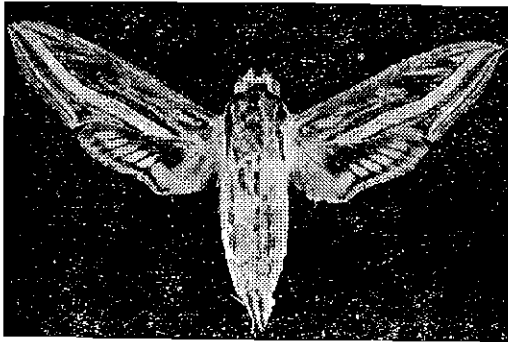
65. *Celerio euphorbiae* L. (No. 208)
[Küçültülmüştür — Reduced]
66. *Hyloicus ligustri* L. (No. 213)
[Küçültülmüştür — Reduced]
67. *Hippotion celerio* L. (No. 214)
[Küçültülmüştür — Reduced]
68. *Acherontia atropos* L. (No. 218)
[Küçültülmüştür — Reduced]
69. *Smerinthus kindermanni* Led. (No. 219)
[Küçültülmüştür — Reduced]
70. *Amorpha populi* L. (No. 221)
[Küçültülmüştür — Reduced]
71. *Phalera bucephala* L. (No. 222)
72. *Notodonta anceps* Goetz. (No. 226)



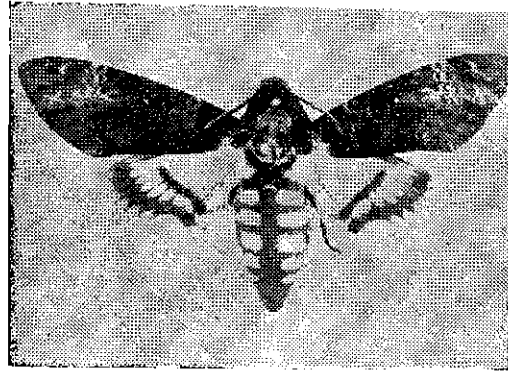
No. 65



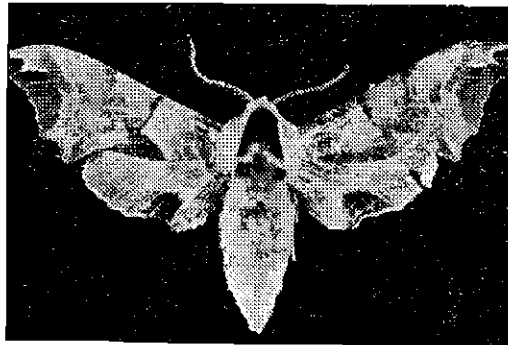
No. 66



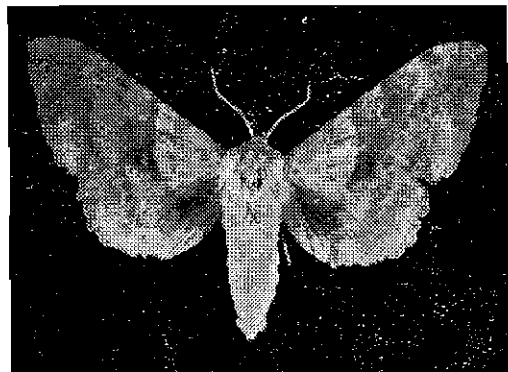
No. 67



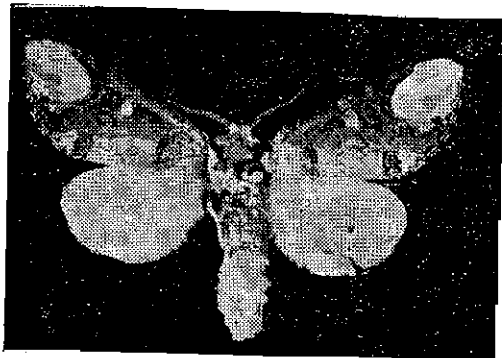
No. 68



No. 69



No. 70



No. 71

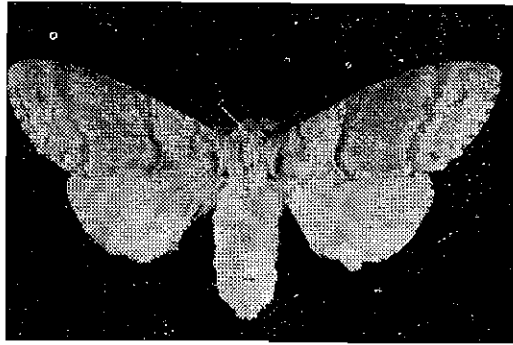


No. 72

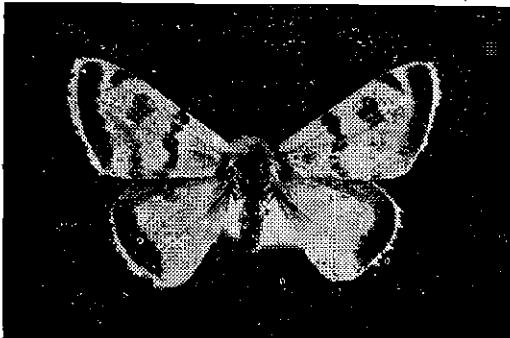
73. *Thaumetopoea pityocampa* Schiff. (No. 230)
74. *Dasychira pudibunda* L. (No. 231)
[Küçültülmüştür — Reduced]
75. *Orgyia dubia turcica* Led. (No. 232)
76. *Lasiocampa trifolii* Esp. (No. 239)
[Küçültülmüştür — Reduced]
77. *Eudia spini* Schiff. (No. 246)
[Küçültülmüştür — Reduced]
78. *Palimpsestis ocularis* L. (No. 248)
79. *Boarmia selenaria* ? *dianaria* Hbn. (No. 250)
80. *Pseudopanthera macularia* L. (No. 258)



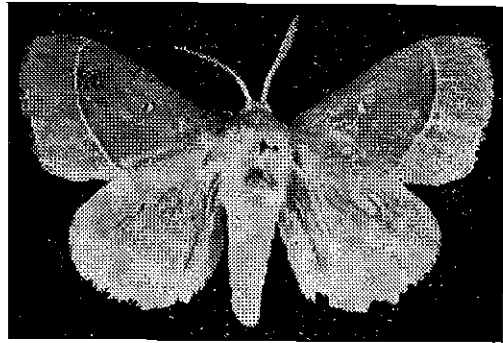
No. 73



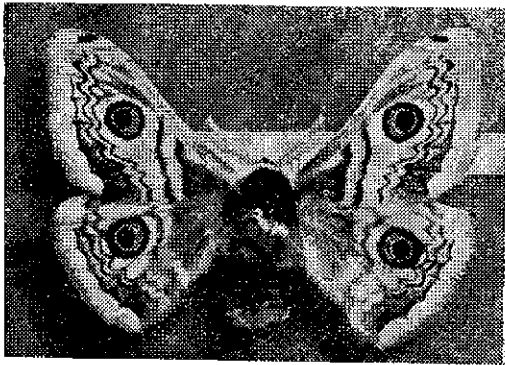
No. 74



No. 75



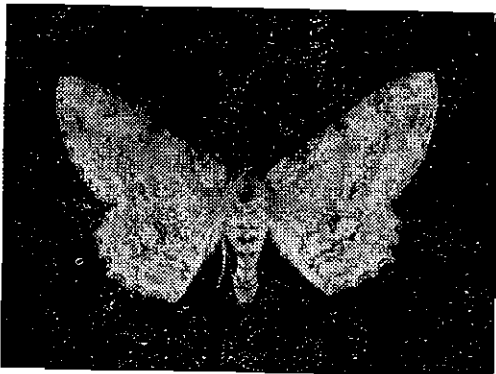
No. 76



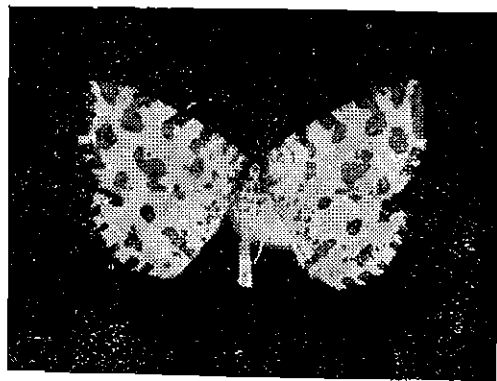
No. 77



No. 78



No. 79

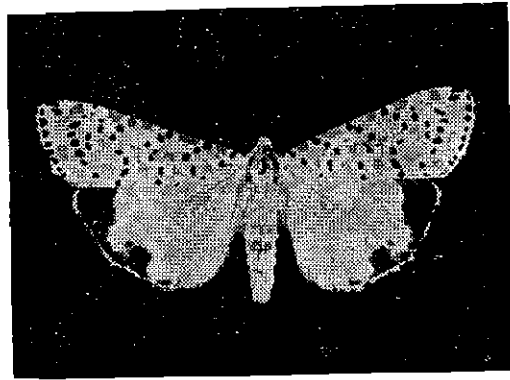


No. 80

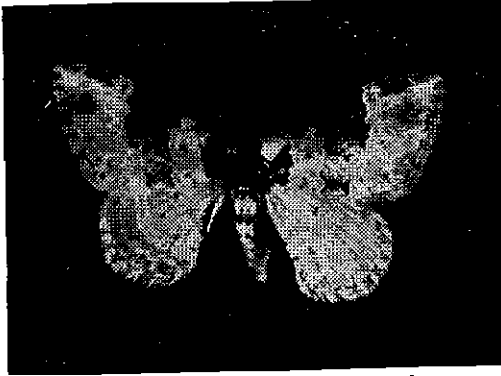
81. *Nyssia zonaria* Schiff. (No. 263)
82. *Rhodometra sacraria* L. (No. 272)
83. *Xanthorhoe fluctuata* L. (No. 276)
84. *Euprepia striata* L. (No. 287)
85. *Utetheisa pulchella ?tenuella* Seitz (No. 288)
86. *Ocnogyna parasita* Hbn. (No. 290)
87. *Cymbalophora pudica* Esp. (No. 293)
88. *Diacrisia menthastri* Esp. (No. 294)



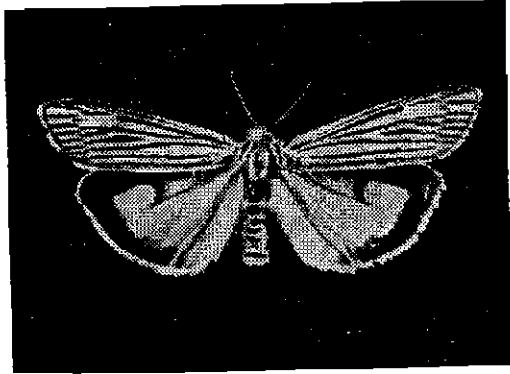
No. 81



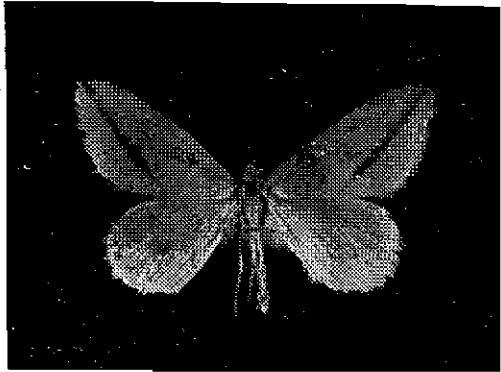
No. 82



No. 83



No. 84



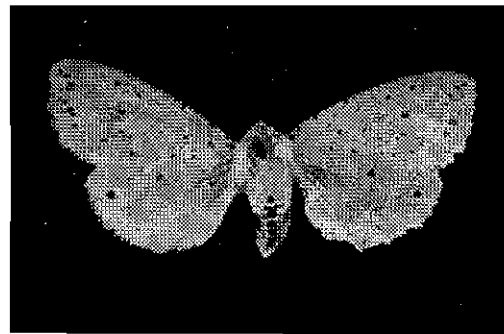
No. 85



No. 86



No. 87



No. 88

89. *Arctinia caesarea* Goetz (No. 296)

90. *Arctia villica* L. (No. 298)

[Küçültülmüştür — Reduced]

91. *Eucharia festiva* Hufn. (No. 300)

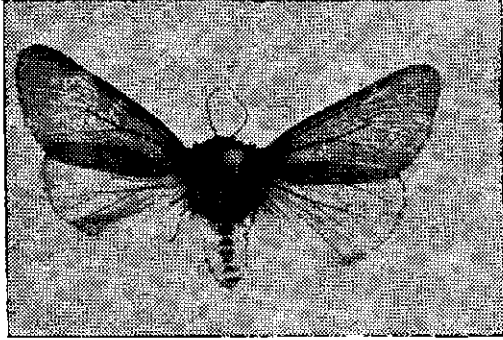
[Küçültülmüştür — Reduced]

92. *Tyria jacobaeae* L. (No. 301)

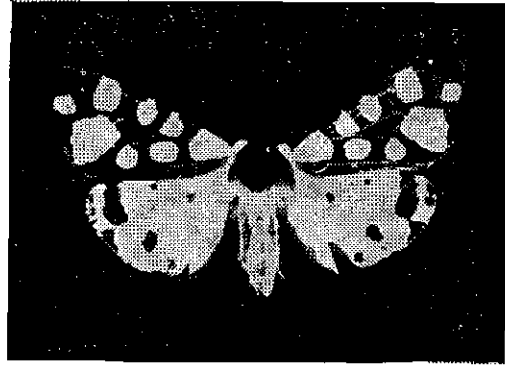
93. *Euplagia quadripunctaria* Poda. (No. 302)

[Küçültülmüştür — Reduced]

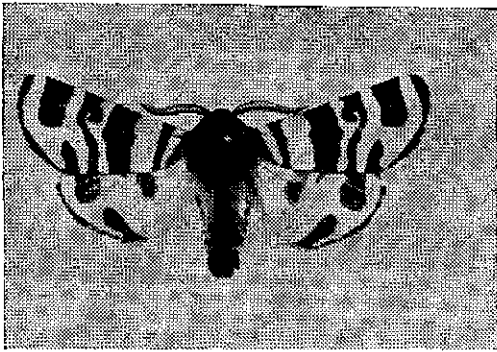
94. *Synanthedon myopaeformis* Bkh. (No. 309)



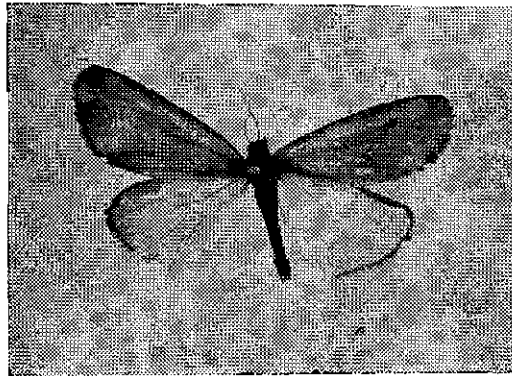
No. 89



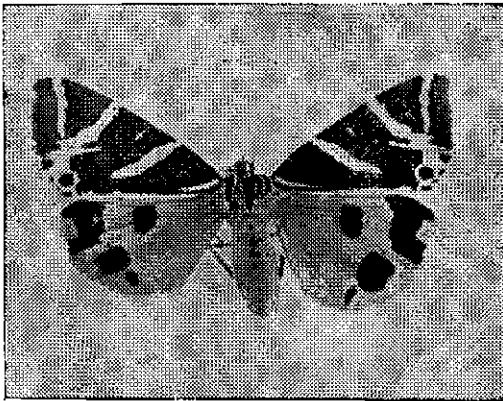
No. 90



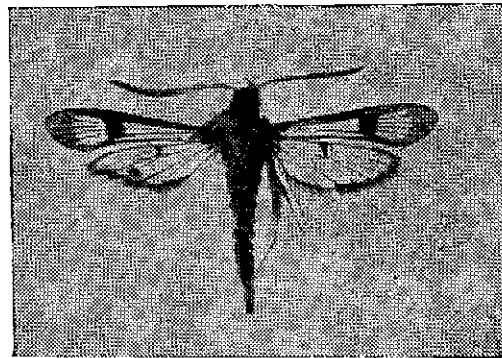
No. 91



No. 92



No. 93



No. 94