

A Red Cross Bowl belonging to Assyrian Colony Period

Atila Türker*

Özet

Orta Anadolu'nun güneydoğu kesimindeki Acemhöyük, Asur Ticaret Kolonileri Çağı'nın en büyük yerleşimlerinden birisidir. Bu yerleşimin Geç ATKÇ katında, Anıtsal Yapılar Evresi'ni izleyen yerleşimin II. katında bulunmuş bir kırmızı haç motifli kap, yerleşime ve bu kap geleneğine yeni bir anlam katmaktadır. ETÇ sonunda Doğu Akdeniz dünyasında yaygın bir bezeme anlayışı sergileyen bu gelenek, Hint-Avrupalılar, Luvilerle özdeşleştirilmek istenmektedir. Orta Tunç Çağı'nda oldukça azalan bu kap geleneğinin kullanımı, çoğunlukla Akdeniz'in sahil kesimindeki yerleşimlerinde yoğunlaşmış gibidir; iç kesimdeki Acemhöyük istisnadır. Acemhöyük, çağdaşları arasında en geç örneklerinden birini sergilemektedir.

Anahtar Kelimeler: *Doğu Akdeniz, Acemhöyük, Kırmızı Haç Motifli Kaplar, Luviler, Asur Ticaret Kolonileri Çağı.*

Zusammenfassung

Ein 'Red Cross Bowl' von altassyrischen Kolonialen Zeit

Acemhöyük, eine Stadt ins südwestlich von Anatolien, war eine der riesigen Siedlungen unter der altassyrischen Kolonialen Zeit. Ein Red Cross Bowl (rot-kreuzen Schüssel) wird im II Schicht dieser Stadt gefunden, das der monumental Gebäude Phase folgt, und gehörte zum spät altassyrischen Kolonialen Alter, und es gibt eine neue Bedeutung zur Siedlung und dieser Gefäßtradition. Die Tradition in Frage, die unter der letzten Phase des Frühen Bronzealters ins Ost-Mittelmeer Gebiet eine weitverbreitete Verzierungsmotivität zeigt, wird versucht, zu Luwians d.h. die indoeuropäisch zuzuschreiben. Die Verwendung dieser Gefäßtradition, die gut genug während des Mittleren Bronzealters herunterkam, nahm meistens in den Östlichen Mittelmeer Küstenentscheidungen zu; Acemhöyük, die binnenländische Stadt, war eine Ausnahme. Von diesem Gesichtspunkt Acemhöyük auch stellt eine von den spätesten Beispielen unter seinen zeitgenössischen Siedlungen dar.

Schlüsselwörter: *östlicher Mittelmeer, Acemhöyük, Red Cross Bowl, Luwischen, altassyrischen Kolonien Zeit.*

* Arkeolog Dr., atilatuerker@yahoo.de.

Acemhöyük is situated in the south of Salt Lake, in the southern part of the Central Anatolia. The levels III-I of Acemhöyük are assigned to the Late Assyrian Colonial age, and this period represents the most productive phase of the Acemhöyük settlement. Especially in the level III of Acemhöyük, it is found colossal buildings¹ such as two courts, named Sarıkaya and Hatipler, and an Employment Building. In the level II following this splendid period, it seems unusual that there was no colossal building, and that the production decreased relatively, but there was no important alteration for the earthenware. In the lower city of Acemhöyük, four levels of the settlement are discovered, and those levels follow a parallel process with the last four levels of the mound². A Red Cross Bowl forming the main theme of this paper came from the ruins of a residence in the level II of the Lower City of Acemhöyük³.

This bowl has a flaring rim thickened out and a ring pedestal bottom. Its color remained the same as buffer-colored clay; the interior and outer parts of the rim were decorated with wine-red bands, and the interior of the bowl was ornamented a red thick cross, which has bars reaching to the rim of the vessel.

In the Near Eastern Archeology, the earliest example of the vessels with Red Cross decoration which embellished mostly the different variants of this bowl, belonged to the Hacılar I,⁴ a culture which is dated to the Early Chalcolithic period. However, except its form, this decoration could be followed back to the VI level of Hacılar mound, i.e. to the Late Neolithic period⁵. In the archaeological studies, most of the vessels with the red-cross are dated to a period from the end of the Early Bronze age to the beginning of the Middle Bronze age. The vessels with the red-cross appear in Pekmeztepe/Aphrodisias⁶, the levels VII-VIa-b of Beycesultan⁷, level Ve-f of Kilise Tepe⁸, the levels XI-XVI of Polatlı⁹, Kusura¹⁰, Demircihöyük¹¹, Alaca

¹ For the period, called as "The Monumental Building Phase", see Türker 2008, pp. 18.

² Owing to the intensive settlement in modern Yeşilova town, the archeological studies carried out in the Lower City; the excavations were limited with the try-pits in narrow areas there. For Lower city excavations of Acemhöyük see. Türker, 2008, pp. 29.

³ Thanks to Prof. Aliye Öztan of permission to study on Acemhöyük ceramics.

⁴ Mellaart 1970, Pl. 92/94, Fig. 125-139

⁵ Korfmann 1983, 295.

⁶ Joukowsky 1986, Fig. 321/16.

⁷ Lloyd - Mellaart 1962, P.57/26, 31, P.64/23, 26, P.65/2-3, P.66/17, P.70/7.

⁸ Symington 2007, Fig. 351-354, 356, 358. Another piece was also found by Mellaart from this settlement; Mellaart 1958a, Pl. I/3.

⁹ Lloyd - Gökçe 1951, 46, 57, Fig. 13, No. 12.

¹⁰ Lamb 1937, Fig. 6/1a-c.

¹¹ Seeher 1987, Pl. 43/23.

A Red Cross Bowl from Assyrian Colony Period

Höyük¹², level 11 of Kültepe¹³ and the level Ib of Alişar¹⁴, all those are dated to the end of Early Bronze age. A few of vessels decorated with Red Cross motif were also discovered in Troia IV, but the number of vessel with this kind of motif became to increase from Troia IV to Troia V¹⁵, and finally it was out of fashion at the beginning of the Troia VI¹⁶. Two “red-cross bowls” from Mersin-Yumuktepe betoken continuing relations or influence in the days of Troy V¹⁷. For the example of Tarsus-Gözlükule, it seems that the Red Cross decoration applied to the outer surface of a one handled bowl, and that there is a common mind with regard to decorations in both sites¹⁸.

The surveys point out that the Red Cross bowls diffused to a great number of settlements in Anatolia. The diffusion in question intensified especially in the inner part of the West Anatolia and also the southern part of the Central Anatolia¹⁹. The same artifacts from Bademağacı must probably be dated to the Middle Bronze age. Moreover, since there were trefoil-mugs and dishes from Alacahöyük²⁰, Bademağacı settlement must probably correspond to the level II of Acemhöyük, not to Acemhöyük III.

The vessels decorated with Red Cross which were unearthed in great quantities in Anatolia²¹, also appeared in the sites of Cyprus, Aegean islands and Greece which are dated to the end of Early Helladic period and the Middle Bronze age of Cyprus²² and beginning of Middle Bronze Age in Levant²³.

¹² Lloyd - Mellaart 1962, Table in p. 264.

¹³ Özgüç, N. 1957, Res. 29; Özgüç, T. 1963, 13; Öktü 1973, 41, Taf. 13.I-B/42; Korfmann 1983, 292.

¹⁴ Schmidt 1932a, Pl. VII; von der Osten 1937a, 158, Pl. IV/7, Pl. VIII.

¹⁵ Blegen et al. 1951, Fig. 240/32.69 and 33/527, Fig. 246/1-5, Fig. 254/9 and 14, Fig. 256/13.

¹⁶ Blegen et al. 1951, 138, 193, 250; Blum 2002: 77.

¹⁷ Garstang 1953, p. 189.

¹⁸ Goldman 1956, Fig. 811-813.

¹⁹ This kind of vessels are discovered during the surveys at the following sites: Birgi in İzmir, Tavşanlı in Kütahya, Maltepe-Eğret (Mellaart 1958a, note 21), Cumhuriyet Höyük Mevkii, Yazırın Çayır (Koçak 2004, 43 vd., 48 vd., Fig. 46/3, 46/7, Pic. 16/3), Akviran, Dinar, Pınarbaşı-Göl Höyük in Afyon, Göndürle-Harmanören in Isparta (Mellaart 1958a, note 32), Medet Höyük and Yassı Höyük in Denizli (Mellaart 1958a, note 24), Bitik and Karaoğlan in Ankara (Mellaart 1958a, note 26), in Konya plain Karahöyük (Mellaart 1958a, Pl. I/4), Ortakaraviran (Mellaart 1958a, Pl. I/1), Seyeti Han (Mellaart 1958a, Lev. I/2), Kızılviran (Mellaart 1958a, 322, note 17, like Pl. I/1), Höyükli and Kuruçay-Akşehir (Mellaart 1958a, 322).

²⁰ For the comparison between Acemhöyük and Bademağacı, see Türker 2008, 225, Lev. XIV/1 (for the similar trefoil mud from Bademağacı), for the comparison between Acemhöyük and Bademağacı, see Pl. XV (for the similar plate from Bademağacı, see Umurtak 2003, 1/12, 5/1-2), Pl. XVIII/1 (for the similar Red-cross bowl from Bademağacı, see Umurtak 2003, Fig. 1/6, 8/1).

²¹ Korfmann 1983, 295.

²² Karakou, Asine, Tiryns, Eutresis, Orchomenos, Kirrha, Malthi, Lerna, Zygouries and Thera

It is difficult to bring a concrete explanation to the Red Cross decoration on the vessels which appeared during a long period in Anatolia and the exterior regions. Various theories concerning the usage aim of those bowls was developed in the recent times. Blegen suggested the decoration in question could be used a hallmark as “par excellence of Troia fifth settlement”²⁴. Gerstenblith²⁵ pointed to the cross design on knobs²⁶ of cups from Konya-Karahöyük and suggested to resemble with painted cross. But both the various designs show on knobs at the same site and this design don’t appear on bowls²⁷, we think that Gerstenblith’s comparison seems a chance. According a speculative proposal which was suggested by Mellaart and Korfmann, the vessels decorated with Red Cross “must be related with the Indo-European groups in Anatolia and Eastern Mediterranean region, who brought about a new language.”²⁸

Various kinds of vessels from Acemhöyük give evidence that this settlement had commercial and cultural relations with the Mediterranean world, with regard to the earthenware²⁹. In this respect, the Red Cross bowl decorated with red bands from Acemhöyük has a typical form of the Middle Bronze age. Since it was found in the level II of Acemhöyük, this bowl must be dated to the Old Assyrian Colonial age. In other words, the vessel culture in question gives an important fixed point for the chronological order. This bowl is probably contemporary with the same artifacts from Troia and Cilicia, or dates a few later than those wares, but not earlier. Acemhöyük’s find represent one of the late examples. In this respect, it probably gives an idea about the probable population movement³⁰ of Luwians in the pre-Hittites period, and their integration to this region and local cultures.

may be regarded as the main settlements, for all see Schaeffer 1948, Pl. LII No. 54 and 64, Tab. 197/2; Mellaart 1958a, 323; Korfmann 1983, Tab. 1.

²³ This kind of vessels are discovered during the excavations at the following sites: Tell Beit Mirsim, Wadi et-Tin, Tell Poleg, Apeh, Dhahrat el-Humraiya, Beth-Shemesh, Qatna, Gezer, Tel el-Far’ah, Hazor (Gerstenblith 1983, 68, Fig. 24), Açına XIIb (Woolley 1955, Pl. XCI:ATP 47/119, 152, Typ 34) and Tell el-Dab’a (Müller 2002, Fig. 11/5, 12/5 and 13/2-3).

²⁴ Blegen et al. 1951, 250.

²⁵ Gerstenblith 1983, 68.

²⁶ Alp 1972, Fig. 760-62.

²⁷ For examples Alp 1972, 763-776.

²⁸ Korfmann 1983, pp. 293; Lloyd - Mellaart 1962, 260; Mellaart 1958b, pp. 9.

²⁹ For the vessels which indicated those relations, see Türker 2008, pp. 231, 243.

³⁰ McQueen 1986, 24.

BİBLİOGRAPHY

- Alp 1972 Alp, S.; *Konya Civarında Karahöyük Kazılarında Bulunan Silindir ve Damga Mühürleri*, Ankara.
- Blegen et al. 1951 Blegen, W., Caskey, J.L., Rawson, M., *Troy II. The Third, Fourth and Fifth Settlements*, Princeton.
- Blum 2002 Blum, S.W.E., "The End of the Early and the Beginning of the Middle Bronze Age at Troia: Troia IV and Troia V 'Anatolian Troia Culture'" *Troy: Journey to a City Between Legend and Reality. Katalog zur Ausstellung, (3. Oktober 2002–5. Januar 2002)*, İstanbul, 74–83.
- Garstang 1953 Garstang, J., *Prehistoric Mersin Yümük Tepe in Southern Turkey*, Oxford.
- Gerstenblith 1983 Gerstenblith, P., *The Levant at the Beginning of the Middle Bronze Age*, (ASOR DS Nr. 5), Winona Lake.
- Goldman 1956 Goldman, H., *Excavations at Gözlü Kule, Tarsus, II: From the Neolithic through the Bronze Age*, Princeton.
- Joukowsky 1986 Joukowsky, M.S., *Prehistoric Aphrodisias; An Account of the Excavations and Artifact Studies, Vol. I-II*, (Archaeologica Transatlantica III), Providence RI.
- Koçak 2004 Koçak, Ö., *Erken Dönemlerde Afyonkarahisar Yerleşimleri*, Konya.
- Korfmann 1983 Korfmann, M., "Red Cross Bowl Angeblicher Leittyp für Troja V", *Beiträge zur Altertumskunde Kleinasiens. Festschrift für Kurt Bittel*, edited by R.M.Boehmer and H.Hauptmann, Mainz am Rhein, 291–297.
- Korfmann 2001 Korfmann, M., "Tarih Öncesi Yerleşim Yeri, Hisarlık Tepesi. En Altın Üste Doğru Troia'nın On Kenti", *Düş ve Gerçek Troia*, İstanbul, 347–354.
- Lamb 1938 Lamb, W., "Excavations at Kusara near Afyon Karahisar: II", *Archaeologia LXXXVII*, 217-274.
- Lloyd - Gökçe 1951 Lloyd, S., Gökçe, N.; "Excavations at Polath. A New Investigation of Second and Third Millennium Stratigraphy in Anatolia", *Anatolian Studies I*, 21–75.
- Lloyd - Mellaart 1962 Lloyd, S. and Mellaart, J., *Beycesultan I. The Chalcolithic and Early Bronze Age Levels*, London.

Atila Türker

- McQueen 1986 McQueen, J.G., *The Hittite and their Contemporaries in Asia Minor*, London.
- Mellaart 1958a Mellaart, J., "Second Millennium Pottery from the Konya Plain and neighbourhood", *Belleten* XXII-87, 311-345.
- Mellaart 1958b Mellaart, J., "End of Early Bronze in Anatolia and the Aegean", *American Journal of Archaeology* LXII, 9-33.
- Mellaart 1970 Mellaart, J., *Excavations at Hacilar*, London.
- Müller 2002 Müller, V., "Offering Practices in the Temple Courts of Tell El-Dab'a and the Levant", *The Middle Bronze Age in the Levant. Proceedings of an International Conference on MB IIA Ceramic Material Vienna, 24th-26th of January 2001*, Ed. by M. Bietak, Wien, 269-295.
- Öktü 1973 Öktü, A., *Die Intermediate-Keramik in Kleinasien*, München.
- Özgüç, N. 1957 Özgüç, N., "Kültepe Kazılarında Bulunan Mermer İdol ve Heykelcikler", *Belleten* XXI-81, 61-80.
- Özgüç, T. 1963 Özgüç, T., "Early Anatolian archaeology in the light of new researches", *Anatolia* VII, 1-21.
- Schaeffer 1948 Schaeffer, C.F.A., *Stratigraphie Comparée et Chronologie de l'Asie Occidentale (IIIe et IIe millénaires)*, London.
- Schmidt 1932 Schmidt, E.F., *The Alishar Hüyük. Seasons of 1928 and 1929* (Oriental Institute Publications XIX), Chicago.
- Symington 2007 Symington, D., "The Early Bronze Age Pottery", *Excavations at Kilise Tepe 1994-98 from Bronze Age to Byzantine in Western Cilicia*, Ed. by N.Postgate & D.Thomas, Oxford, 295-318.
- Türker 2008 Türker, A., *Asur Ticaret Kolonileri Çağı'nda Acemhöyük Çanak Çömleği*, Ankara (Unpublished Ph.D Thesis).
- Umurtak 2003 Umurtak, G., "A Study of a Group of Pottery Finds from the MBA Deposits at Bademağacı Höyük", *Anatolia Antiqua* XI, 2003, 53-74.
- von der Osten 1937 von der Osten, H.H., *The Alishar Hüyük. Seasons of 1930-32*, (OIP XXVIII), Chicago.
- Woolley 1955 Woolley, L., *Alalakh. An account of the excavations at tell Atchana in the Hatay, 1937-1949*, Oxford.

A Red Cross Bowl from Assyrian Colony Period

Catalogue of Acemhöyük find (fig. 2)

Acemhöyük Lower City Trench K-L/20-21, Level II; Height 7,3 cm., width 11,5 cm.; flaring rim thickened out, rounded simple body shapes, ring base, ring-pedestal bottom; non-porous buff colored paste (7.5 YR 6/4) inclusions sparse grit-temper, medium sand, limestone; wet smoothed in paste color; hardly fired; thick-wall; WM; Extending over rim and partway interior in red wine color (7.5 R 4/6), wide cross inside in same color; 1/3 rim pie deficient.

Atila Türker

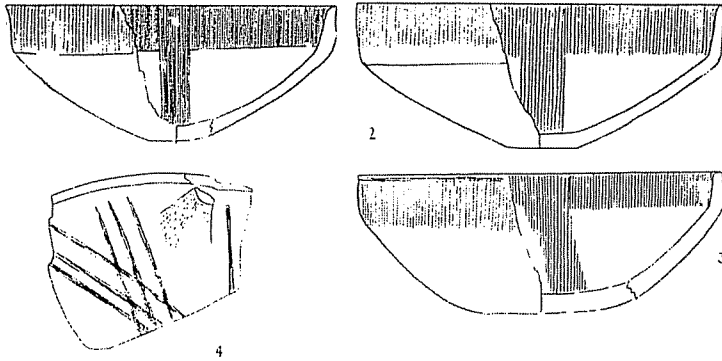


Fig. 1: Sherds from Ortakaraviran 2, Seyeti Han, Maltepe, Konya Karahöyük (from Mellaart 1958a).

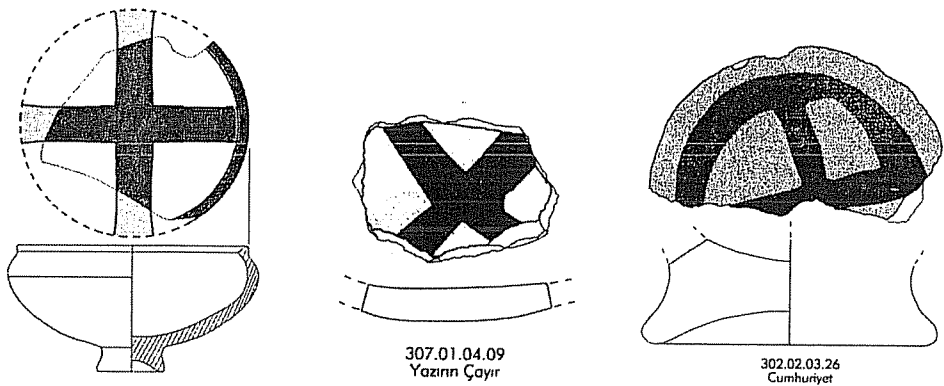
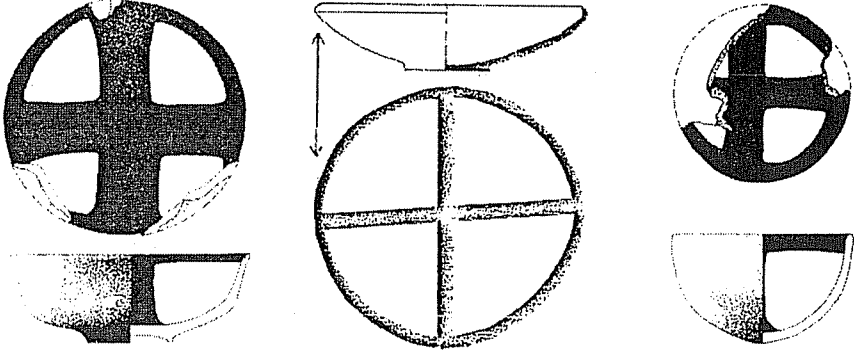
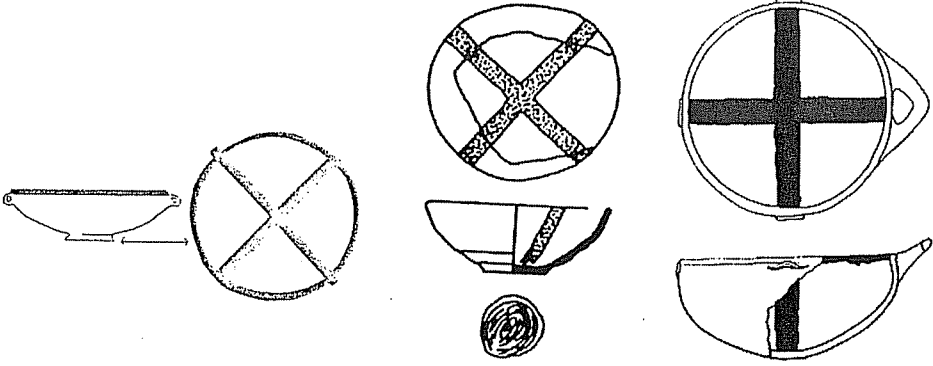


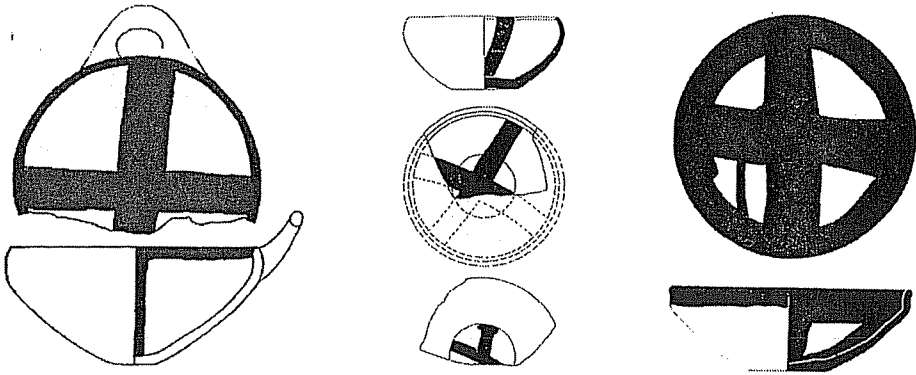
Fig. 2: Red Cross Wares from Acemhöyük, Yazının Çayır and Cumhuriyet höyüks.



Resim 3: Hacılar, Tel el-Farah, Demircihöyük



Resim 4: Gezer, Bağdemağacı, Beycesultan



Resim 5: Beycesultan, Kusura, Kilisetepe