

**A list of some Clytrinae (Col. : Chrysomelidae) from Turkey.  
Labidostomis, Lachnaea, Antipa, Coptocephala\* (Part I)**

Halil KASAP\*\*

**Summary**

Based on the material collected by the author mainly in Central Anatolia, and the material collected from Turkey and deposited in Zoological Museum of Munich and East Berlin, and in private collection of O. Tokmakoglu, Ankara, 16 species of *Labidostomis*, *Lachnaea*, *Antipa* and *Coptocephala* (Clytrinae) are recorded, many localities being new to the distribution of respective species in Turkey. For each species, old synonyms, if known locus typicus, distribution, collection dates and host plants and occurrence of the new material are presented. The taxonomic status of some forms is also discussed.

**Introduction**

Although there has not been any comprehensive taxonomic study on the fauna of Turkish Chrysomelidae, the amount of information scattered in various papers is highly considerable. Earlier information about Turkish Chrysomelidae came from major works by Lefèvre (1872), Kraatz (1872), Weise (1882-1893, 1897, 1900), Bodemeyer (1900,1906), Sahlberg (1913) and more recent works by Medvedev (1961, 1970), Tomov and Gruev (1975), Gruev and Tomov (1979) and Gruev and Kasap (1985); the other papers about Turkish Chrysomelidae which are far more in number, will be cited under relevant taxa.

\* Part of the project TBAG 327 sponsored by the Scientific and Technical Research Council of Turkey.

\*\* Department of Medical Biology, University of Çukurova, Balcalı, Adana, Turkey.

The aim of this work is to make a comprehensive record of Chrysomelidae collected by the author in Central Anatolia where as possible as many localities were included. The species represented in Central Anatolia are also studied for the available specimens from other parts of Turkey and reviewed for the previous records from the whole Turkey. Nomenclature, taxonomic status, synonyms and order of taxa were given according to the catalogues by Heyden et al. (1906), Clavereau (1913) and Winkler (1932), but wherever present, more recent taxonomic changes were given in more detail. Other information presented included general distribution, previous records from Turkey, where old and/or modified locality names were converted here to currently used Turkish names, records of new material studied and notes on occurrence. Most of the specimens were collected on vegetation by sweeping but identified host plants of some species are also recorded. However, host plants of species cited in literature are not reviewed here to limit the size of paper. New descriptions or redescriptions and drawings of diagnostic features and discussions of the taxonomy of some species upon the information gained from the new material examined are necessarily included.

The study is arranged in a series of publication, each will contain one or more genera depending the number of species. This paper presents 16 species *Labidostomis*, *Lachnaea*, *Antipa* and *Coptoccephala* represented in Central Anatolia.

The new material collected by the author is preserved in his collection. The following abbreviations are employed in designating repositories of specimens examined : BZM : Zoologisches Museum der Humboldt-Universitaet, Berlin; MZS : Zoologische Staatssammlung, München; PM : Museum National d'Histoire Naturelle, Paris; HK : Halil Kasap, University of Çukurova, Adana; OT : Orhan Tokmakoglu, Sugar Institute, Ankara.

*Labidostomis* (*s. str.*) *asiatica* Faldermann, 1837

*Locus typicus* : Caucasia

Distribution : Asia Minor and Caucasia (Weise, 1882; Clavereau, 1913; Winkler, 1932, Rاپilly, 1934). Previous records from Turkey : Izmir, Yamanlar (Izmir), Bilecik, Bolkar Dađı, Maden (Adana), Trabzon, Amasya, Elazıđ, Kayseri, Oltu and Ispir (Erzurum) (Kraatz, 1872; Lefevre, 1872; Weise, 1884; Bodemeyer, 1906; Sahlberg, 1913; Tomov and Gruev, 1975; Warchalowski, 1935).

Material examine : Beytepe Köyü (Ankara), 30.5.-7.6.1978, 26 exs. on *Prunus orientalis*; Konya, 15.6.1980, 32 exs. on *Prunus orientalis*, (HK). Eskişehir, 7.8.1906, 1 ex.; Bilecik, 1 ex.; Afyonkarahisar, 1 ex. (MZS).

Occurrence : Not common, but sometimes in large numbers.

*Labidostomis* (s. str.) *decipiens* Faldermann, 1837

Synonymy : *Labidostomis lineola* Redtenbacher, 1843

Locus typicus : N. Iran.

Distribution : Cyprus, Asia Minor, Caucasia, Syria, N. Iran (Warchalowski, 1985). Previous records from Turkey : Karataş, Çat Dağı, Toros Dağları (Adana), Konya, Ankara, Malatya, Urfa, Amasya (Kraatz, 1872; Weise, 1884; Tuatay et al., 1972; Tomov and Gruev, 1975; Gruev and Tomov, 1979; Warchalowski, 1935).

Material examined : Kızılcahamam - Soğuksu Milli Parkı, (Ankara) 21.6.1977, 2 exs. on *Ulmus* sp. (HK). Seyhan Barajı (Adana), 12.5.1978 leg. A. Beyarslan, 4 exs.; Çamlıyayla - Sarız Köyü (Mersin), 8.6.1978, leg. Ç. Şengonca, 4 exs., (HK).

Occurrence : Not common.

*Labidostomis* (s. str.) *mesopotamica* Heyden, 1886

Synonymy : *Labidostomic Escherichi* Weise, 1897

*Labidostomis iconiensis* Weise, 1900

*Labidostomis frontalis* Weise, 1900

*Escherichi* = *mesopotamica*: Warchalowski, 1985 : 700

*iconiensis* = *mesopotamica*: Warchalowski, 1985 : 700

*frontalis* = *mesopotamica*: Warchalowski, 1985 : 700

Locus typicus : Malatya (Turkey)

Distribution : Turkey and N. Syria (Warchalowski : 1985). Previous records from Turkey : Konya, Toros Dağları, Ankara, Niğde, Bolkar Dağı - Maden, Nevşehir, Göreme, Kocaeli, Eskişehir, Bursa, Bilecik, Malatya, (Hyden, 1886; Weise, 1897, 1900; Warchalowski, 1985).

Material examined : Ankara, 1895 leg. Escherich 1 ♂ Lectotype, *L. escherichi* (BZM). Beytepe Köyü (Ankara), 25.5.1977, 1 ex.; Söğütözü (Ankara), 1.5.1979, 3 exs. on *Alyssum lepidonotum*; Gıcık (Ankara), 16.5.1977, 6 exs. on *Anchusa* sp.; Ayaş (Ankara), 28.5.1977, 3 exs. on *Salix* sp.; Şereflikoçhisar (Ankara), 19.5.1978, 3 exs.; Selimağa Köyü (Kaman, Kırşehir), 13.5.1979, 2 exs.; Yahyalı Köyü (Yerköy, Yozgat), 19.5.1975, leg. A. Demirsoy, 2 exs.; Boğazlyan (Yozgat), 21.5.1978, 2 exs.; Sivas, 18.6.1978, 12 exs. (HK). Konya, 1899 leg. Korb. ex. col. J. Weise 1 ♂ 1 ♀ Syntype, *L. escherichi* (BZM). Eskişehir, 7.5.1906, 1 ex. (MZS). Bilecik, leg. Bodemeyer ex. col. J. Weise 1 ♂ Syntype, *L. escherichi* (BZM).

Occurrence : Rather common.

Discussion : Before receiving the paper of Warchalowski (1985), the author had examined the type material of *L. escherichi* and topotypes of *L. iconiensis* and *L. frontalis* (type locality of both species is Konya) but had no chance to examine those of *L. mesopotamica*, concluding that at least *L. iconiensis* and *L. frontalis* should be synonyms of *L. escherichi* (Kasap, 1982). Diagnostic features of these species given in their original descriptions were of rather wide range and it was here found that these features were almost variable between types and other material.

Thus it is believed that Warchalowski (l. c.) reached a right solution.

It may also be worth recording our observation that yellow spots on elytral shoulders of alive specimens get paler or even entirely disappear after death.

*Labidostomis* (s. str.) *karamanica* Weise, 1900

Synonymy : *Labidostomis cyprius* Lopatin, 1962

*cyprius* = *karamanica* : Warchalowski, 1985 : 635

Locus typicus : Toros Mnts. (S. Turkey).

Distribution : Cyprus, Turkey, N. W. Syria (Warchalowski, 1985). Previous records from Turkey : Konya, Bolkar Dağı, Maden Dağı, Burna, Mağara (Bolkar Dağı), Adana, Toros Dağları, Gözne (İçel) (Weise, 1900; Tomov and Gruev, 1975; Warchalowski, 1985).

Material examined : Zanapa = Halkapınar (Konya), 1 ex. (OT). Konya, 1899 leg. Korb 2 exs. and Bolkar Mnt. - Mağara, 1900 leg. Bodomeyer 1 ex. (MZS).

Occurrence : Rare

*Labidostomis* (s. str.) *krobi* Weise, 1901

Locus typicus : Akşehir (Konya, Turkey)

Distribution : This is an endemic species known only from the type locality. Previous records : Akşehir (Konya) (Weise, 1901; Warchalowski, 1985).

Material examined : Akşehir, 1900 leg. Korb. 2 exs. (MZS) : Weise (1901) in the original description of this species did not designate the type material, thus the two specimens examined here might probably come from type series.

Occurrence : Very rare.

*Labidostomis (s. str.) longimana* (Linnaeus, 1761)

Synonymy : *Melolontha pallida* Fourcroy, 1785; *Labidostomis dalmanina* Lacordaire, 1848; *Clytra urolensis* Lacordaire, 1848; *Labidostomis glycyrrhizae* Becher, 1880.

Locus typicus : Not designated in the original description.

Distribution : From France to Mongolia (Warchalowski, 1985). Previous records from Turkey : Kunduz, Ovacık (Samsun), Kızılcahamam - Ankara (Tomov and Gruev, 1975; Gruev and Tomov 1979).

Material examined : Beytepe Köyü (Ankara), 21.6.1978, 2 exs.; Bağlum Köyü (Ankara), 9.9.1977, 2 exs.; Ayaş (Ankara), 12.7.1978, 6 exs.; Beynam (Ankara), 26.6.1977, 2 exs.; Kızılcahamam (Ankara), 18.6.1977, 29 exs.; Karagöl (Ankara), 20.6.-7.7.1978, 31 exs.; Nevşehir, Araplı 1500 m., 20.6.1978, 1 ex.; Yozgat, 12.7.1978, 2 exs.; Bünyan (Kayseri), 19.6.1978, 138 exs.; Pınarbaşı (Kayseri), 19.6.1978, 1 ex.; Yıldızeli (Sivas), 14.6.1978, 19 exs.; 14.7.1979, 2 exs.; Hafik Gölü (Sivas), 14.7.1979, 2 exs., (HK). Kızılcahamam (Ankara), 24.6.-5.7.1969, leg. Seidenstuecker, 2 exs. (MZS).

Occurrence : Common, usually found in large numbers in vegetation thus easily collected with sweeping net. Thus the material examined represents the sampled material rather than collected in total.

*Labidostomis (s. str.) maculipennis* Lefevre, 1870

Synonymy : *Labidostomis kindermanni* Kraatz, 1872

Locus typicus : Turkey

Distribution : Asia Minor, Caucasia, Lebanon (Warchalowski, 1985). Previous records from Turkey : Amasya, Bozdağ (Izmit), Beypazarı (Ankara), Ankara (Lefèvre, 1872; Kraatz, 1872; Weise 1884; Tomov and Gruev, 1975; Warchalowski, 1985).

Material examined : Beytepe Köyü (Ankara), 20.6.1977, 1 ex.; Yıldızeli (Sivas), 14.6.1978, 2 exs. (HK). Van, 1912, leg. Kulzer 2 exs.; Ankara, leg. Escherich, 6 exs. (MZS).

Occurrence : Rare

*Labidostomis (s. str.) oartzeni* Weise, 1899

Synonymy : *Labidostomis heteromalla* Lefèvre, 1899

*Labidostomis villosula* Weise, 1900

*heteromalla* = *oartzeni* : Medvedev, 1983 : 136

*villosula* = *oartzeni* : Warchalowski, 1985 : 709

Locus typicus : Kastelo, Rhodus, Sporaden, Greece.

Distribution : S. Yugoslavia, Bulgaria, Greece and Asia Minor (Warchalowski, 1985). Previous records from Turkey : Asia Minor, Izmir, Kirklareli, Amasya, Mardin, Ispir (Erzurum) (Clavereau, 1913, Winkler, 1932 and Tomov and Gruev, 1975, *L. villosula*; Medvedev 1983; Warchalowski, 1985).

Material examined : Beytepe Köyü, Lalahan and Beynam, (Ankara). 7-27.6.1978, 3 exs. on *Salix* sp. (HK). Kadıköy (Istanbul), J. Breit coll., 1 ex. (OT). «Rhodos, Klost., Artemidi, leg. V. Oertzen 1 ♂ Type 1 ♀ Paratype; *L. oertzeni*» (BZM). «Izmir, Juni 1888, leg. Delagrangei, ex. Museo Lefèvre 1 ♂ Type, 1 ♂ 2 ♀♀ Paratype, *L. heteromalla*» (PM).

Occurrence : Not common.

Discussion : Morphological characteristics and structure of aedeagus and spermateca of the type material of *L. oartzeni* and *L. heteromalla* studied here showed no diagnostic differences between these two forms. Thus, I entirely agree with the new status of *L. heteromalla* as new synonym of *L. oartzeni*, as designated by Medvedev (1983).

*Labidostomis* (s. str.) *pallidipennis* (Gebler, 1830)

Synonyms : *Clytra chalybeicornis* Brulle, 1832; *Labidostomis longipennis* Gebler, 1841; *Labidostomis distinguenda* Rosenhauer, 1847; *Clytra pilicollis* Lacordaire, 1848; *Clytra elongata* Lacordaire, 1848; *Labidostomis sicula* Kraatz, 1872.

Locus typicus : Loktevsk (Russia).

Distribution : From Spain, through Asia Minor to Altai in Central Asia (Warchalowski, 1985). Previous records from Turkey : Sarayköy (Denizli) (Sahlberg, 1913).

Material examined : Demetevler - Atatürk Orman Çiftliği (Ankara), 8-18.6.1977, 9 exs. on *Salix* sp.; Beytepe Köyü (Ankara), 21.6.1978, 2 exs. on *Onopordon turcicum*; Beynam (Ankara), 21-26.6.1979, 2 exs.; Ayaş (Ankara), 12.7.1978, 1 ex.; Kızılcahamam (Ankara), 18.6.1977, 1 ex., (HK). Istanbul, J. Breit coll., 1 ex. (MZS).

Occurrence : Not common.

*Labidostomis* (s. str.) *propinqua* Faldermann, 1837

Synonyms : *Clytra binotata* Wärtl, 1838; *Clytra stevenii* Lacordaire, 1848; *Labidostomis arnoldii* Medvedev, 1982.

*Arnoldii* = *propinqua* : Iablakoff - Khnzerian, 1966 : 259.

*Locus typicus* : Caucasia.

Distribution : S. Yugoslavia, Bulgaria, Greece, Asia Minor, Caucasia and N. Iran (Warchalowski, 1935). Previous records from Turkey : Trace (Turkey), Istanbul, Bolu, Sapanca, Izmit, Adapazarı, Samsun, Bafra, Amasya, Trabzon, Gümüşhane, Ispir (Erzurum), Boz Dağı, Bolkar Dağı, Külek, Burna (Kraatz, 1872; Weise 1884; Bodemeyer, 1900; Medvedev, 1970; Gül-Zümreoğlu, 1972; Tomov and Gruev, 1975; Warchalowski, 1985).

Material examined : Bayındır Brj. (Ankara), 2 exs. on *Ranunculus constantinopolitanus*, Ayaş, Lalahan, Kalecik (Ankara), 14.5-12.6.1978, 19 exs.; Bünyan (Kayseri), 18.6.1978, 2 exs. on *Amelanchias* sp.; Kangal (Sivas), 25.5.1978, 4 exs.; Merzifon (Amasya), 25.5.1978, 13 exs. (HK). Amasya, 1 ex. Ankara, 1895 leg. Escherich, 1 exs.; Konya, 1897 leg. Escherich, 5 exs.; Hacılar (Kayseri), 10 exs.; Üsküdar (Istanbul), 8 exs. (MZS). Kadıköy (Istanbul), J. Breit coll., 2 exs. (OT).

Occurrence : Rather common.

*Labidostomis* (*s. str.*) *rufa* (Waltl, 1838)

*Locus typicus* : Istanbul (Turkey).

Distribution : S. Yugoslavia, Bulgaria, Greece, Asia Minor (Warchalowski, 1935). Previous records from Turkey : Asia Minor, Istanbul, Bilecik, Amasya, Göynücek and Ezinepazarı (Amasya), Ankara, Bozdağ and Yamanlar Dağı (Izmir), Sultandağı (Afyon), Külek (Adana) (Lefèvre, 1872; Weise, 1884; Bodemeyer, 1900, 1906; Sahlberg, 1913; Medvedev, 1970; Tomov and Gruev, 1975; Gruev and Tomov, 1979).

Material examined : Lalahan, Ayaş, Beynam (Ankara), 14.5-7.6.1978, 10 exs. on *Salix* sp.; Nevşehir, 20.5.1978, 1 ex., (HK). Akşehir (Konya), 1900 leg. Korb 21 exs.; Çubuk Brj. 1-10.6.1969, leg. Seidenstuecker, 1 ex. (MZS).

Occurrence : Not common.

*Labidostomis* (*s. str.*) *sulcicollis* Lacordaire, 1848

Synonymy : *Labidostomis kaszabi* Medvedev, 1962

*kaszabi* = *sulcicollis* : Warchalowski, 1985 : 732

*Locus typicus* : Istanbul (Turkey).

Distribution : Known only from Turkey : Asia Minor, Istanbul, Konya, Aras (East Anatolia), Burna (Toros Mnts.) (Lefèvre, 1872; Kraatz, 1872; Bodemeyer, 1906; Heyden et al., 1906; Claverau, 1913).

Material examined : Ankara-Konya high way 60 km., 19.5.1979, 4 exs.; Şereflikoçhisar (Ankara), 19.5.1978, 1 ex., Boğazlıyan (Yozgat), 21.5.1978, 9 exs.; Kozaklı (Nevşehir), 21.5.1978, 1 ex. (HK). Konya, 1899 leg. Korb, 12 exs. (MZS). Ankara, leg. V.M. Duchon, 1 ex. (OT).

Occurrence : Not common.

*Lachnaea serpunctata* (Scopoli, 1763)

Synonymy : *Cryptocephalus longipes* Fabricius, 1775; *Lachnaia brachialis* Kuester, 1844; *Lachnaea glabricollis* Suffrian, 1851.

Locus typicus : Central Europe.

Distribution : England, Central and Southern Europe, Turkey (Claverau, 1913; Winkler 1932). Previous records from Turkey : Bolkar Dağı, Maden (Toros Mnts.), Bilecik, Kaynarca, Iznik, Hasanoglan (Ankara) (Bodemeyer, 1900, 1906; Medvedev, 1970; Tomov and Gruev, 1975).

Material examined : Çekerek (Yozgat), 13.5.1978, 4 exs.; Sungurlu (Çorum), 25.5.1978, 3 exs.; Koparan (Çorum) 1200 m., 25.5.1978, 1 ex; Alaca (Çorum), 12.6.1978, 4 exs.; Seydişehir Küpe Dağı, 1250 m., 15.6.1980, 1 ex., (HK), all specimens collected on *Quercus* and *Salix* spp., Akşehir (Konya), 1900 leg. Korb 2 exs. (MZS).

Occurrence : Not common.

*Antipus macropus* Illiger, 1880

Locus typicus : Spain.

Distribution : Tunisia, Spain, Austria, S. Russia, Syria, Turkey (Clavereau, 1913; Winkler 1932). Previous records from Turkey : Konya, Menderes River (Bodemeyer, 1900; Sahlberg, 1913).

Material examined : Beytepe Köyü (Ankara), 26.6.1978 1 ex.; Sivas, 17.6.1978, 2 exs., (HK). Konya, 1900 leg. Korb, 1 ex.; Göle (Kars), 9.8.1965, leg. Achteilung and Naumann, 2 exs. (MZS).

Occurrence : Not common.

*Coptocephala unifasciata* (Scopoli, 1763)

Synonymy : *Chrysomela quadrimaculata* Linnaeus, 1767.

Locus typicus : Europe (? Italy).



Distribution : Europe, Siberia, Russia, Turkestan, Greece, Turkey, Syria (Clavereau, 1913). Previous records from Turkey : Mersin, Iskenderun, Antakya, Ankara, (Weise, 1889; Tomov and Gruev, 1975).

Material examined Beytepe Köyü (Ankara), 4.9.1977, 3 exs., Güvercinlik, Ayaş, Kızılcahamam (Ankara), 2-13.7.1978, 26 exs. on *Daucus* sp.; Paşabahçe (Sivas), 15.7.1979, 2 exs. on *Graminae* sp., (HK). Yılanlıdağ (Kayseri), 25.6.1969, 2 exs.; Kızılcahamam (Ankara), 24.6.-5.7.1969 leg. Seidenstuecker, 1 ex. (MZS).

*Coptocephala gebleri* (Gebler, 1841)

Locus typicus : S. Russia.

Distribution : S. Russia, Caucasia, Turkestan, Greece and Turkey. Previous records from Turkey : Sardarbulak (Kars), Niksar (Tokat) (Tomov and Gruev, 1975).

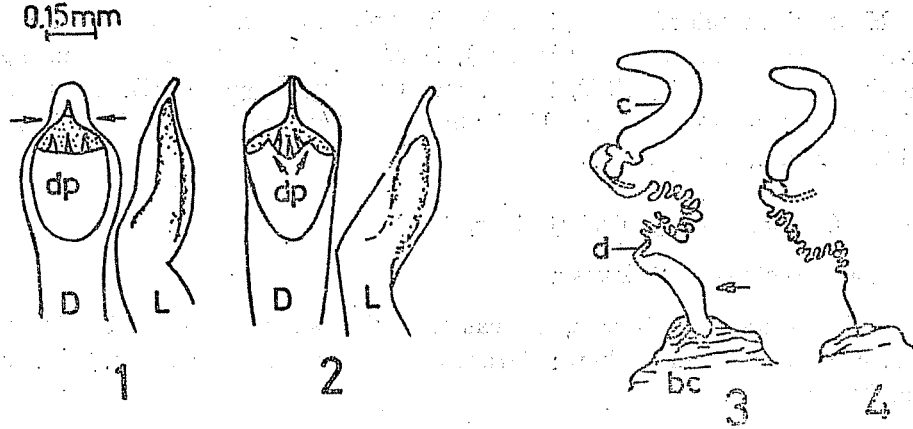
Material examined : Beytepe Köyü (Ankara), 15.7.1977, 2 exs., (HK). Göle (Kars), 2.9.1965, 2 exs. (MZS). Balcalı (Adana), 28.6.1978, 5 exs., (HK).

Occurrence : Not Common.

Discussion : Lefèvre (1872) and Jacobson (1839) distinguished *C. gebleri* from *C. unifasciata* with the colouration of legs and head (except for vertex), are yellowish - brown in *C. gebleri* but dark green in *C. unifasciata*. Reineck (1908) remarked the differences in the structure of aedeagi of *C. coptocephala* and *C. unifasciata*. However Weise (1908) found no difference in the aedeagi of these two forms and suggested that *C. gebleri* should be a local variation of *C. unifasciata* thus Clavereau (1913) and Winkler (1932) catalogued it as «*C. unifasciata* var. *gebleri*». But Tomov and Gruev (1975) took it as a good species. In Beytepe (Ankara), in September 1977 both forms collected together, which meant they were truly sympatric. According to 9 exs. of *C. gebleri*, 34 exs. of *C. unifasciata* examined here, these forms were distinct species for the diagnostic features of colouration of head and coxae, size of the body and the structure of aedeagus (Cf. Figs. 1 and 2) and spermatheca (Cf. Figs. 3 and 4) as indicated in the identification key below :

1. Head, except for vertex, and coxae yellowish brown, aedeagus narrowed at apex and anterior margin of dorsal plate almost straight in dorsal view (Fig. 1); spermathecal duct widened distally (Fig. 3); ♂♂ 6.1 - 6.8, ♀♀ 5.2 - 5.9 mm in length .....  
..... *C. gebleri* (Gebler)
- Head, except for mandibles, and coxae black; aedeagus widened at apex and anterior margin of dorsal plate crenated in dorsal

view (Fig. 2), spermathecal duct not widened distally (Fig. 4);  
♂♂ 4.3-5.6. ♀♀ 3.5-4.7 mm in length ..... *C. unifasciata* (Scopoli).



Figs. 1-2. Aedeagus (D. dorsal, L. lateral view) of  
(1) *C. gebleri*, (2) *C. unifasciata* and spermatheca of *C. gebleri*, (4) *C. unifasciata*, bc bursa capulatrix, c. spermathecal capsul, d. spermathecal duct, dp. dorsal plate. Distinctive diagnostic features cited in text are indicated by arrows.

### Özet

Türkiye'den bazı Clytrinae (Col. : Chrysomelidae) türleri.  
**Labidostomis, Lachnaea, Antipa, Coptocephala** (Kısım I)

Yazar çoğunu İç Anadolu'dan topladığı, ayrıca Münih ve D. Berlin Zooloji Müzeleri ile O. Tokmakoglu'nun Ankara Şeker Enstitüsünde bulunan Türkiye Clytrinae örneklerini içeren *Labidostomis*, *Lachnaea*, *Antipa* ve *Coptocephala* cinslerinden 16 türü incelemiştir. Kayıtlardan çoğu, türlerin Türkiye'deki yayılış alanları için yenidir. Her tür için, varsa sinonimleri, tip yeri, genel yayılışı, yeni materyal'in toplandığı yer, tarih ve konukçu bitkisi belirtilmiş, bazı türlerin taksonomik durumları tartışılmıştır.

### References

- Bodemeyer, H. E. V., 1903. Quer durch Kleinasien, in den Bulghar Dagh : Eine Naturwissenschaftliche Studien-Reise, 193 pp.  
\_\_\_\_\_, 1903. Beitrage zur Käferfauna von Klein-Asien. *Dtsch. ent. Z.*, 2 : 417-437.  
Clavereau, H. in Junk, W.-Schenkling, S., 1913. *Coleopterorum Catalogus, Pars 53. Chrysomelidae : 7. Clytrina p. : 20-278.*

- Gruev, B. und V. Tomov, 1979. Zur Kenntnis einiger in der Türkei, Jugoslawien und Griechenland vorkommender Arten der Familie Chrysomelidae (Coleoptera) aus der zoologischen Staatssammlung München. *Spixina*, 93 : 259-267.
- Gruev, B. and H. Kasap, 1985. A list of some Alticinae from Turkey with descriptions of two new species (Col., Chrysomelidae). *Dtsch. ent. Z., N. F.* (1-3) : 59-73.
- Gül-Zümreoğlu, S., 1972. İzmir Bölge Ziraî Mücadele Araştırma Enstitüsü Böcek ve Genel Zararlılar Katoloğu 1928-1969 (I. Kısım). Bölge Ziraî Mücadele Araş. Ens., Bornova, 119 s.
- Heyden, V. L., 1906. Neue Käferarten aus Malatya (im südlichen Kleinasien). *Dtsch. ent. Z. Berlin*, 30 : 278-280.
- Heyden, V. L., E. Reitter, J. Weise, 1906. *Catalogus Coleopterorum Europe, Caucasus et Armaniae Rossicae*. Berlin.
- Iablokoff-Khinzorian, S. M., 1968. Notes sur les Chrysomelidae de l'Arménie Soviétique (Col.). *Ann. Soc. ent. Fr., N. S.*, 4 (2) : 259-277.
- Jacobson, G., 1839. *Coptocephala gebleri* Gebl. *Horae ent. Ross.*, 27 : 125.
- Kasap, H., 1982. İç Anadolu Clytrinae ve Chrysomelinae (Col., Chrysomelidae) lerinin Taksonomik durumları, Adana (Unpublished Project TÜBİTAK, TBAG 327 report).
- Kraatz, G., 1872. Bemerkungen über Europäische Clytriden. *Berlin ent. Z.*, 16 : 192-232.
- Lefèvre, M. E., 1872. Clytrides d'Europe. *Ann. Soc. Ent. Fr.*, 5 (2) : 75-81.
- Medvedev, L. N., 1961. Obzër palearkticeskih vidov roda *Clytra* Laich. Col., Chrysomelidae). *Entom. Obozr.*, 40 (3) : 630-651.
- , 1970. A list of Chrysomelidae collected by Dr. W. Wittmer in Turkey (Coleoptera), *Rev. Suis. Zool.* 77, 2 (22) : 309-319.
- , 1933. Chrysomelidae from Iran (Insecta : Coleoptera). *Senckenb. Frankfurt a.M.*, 64 (1-3) : 133-140.
- Rapilly, M., 1984. Révision des Labidostomis d'Iran (Col., Chrysomelidae, Clytrinae). *Ann. Soc. ent. Fr. N. S.*, 20 (2) : 215-230.
- Reineck, G., 1908. Eine neue palaearktische *Coptocephala*-Art (Col.) *Dtsch. ent. Z.*, : 363.
- Sahlberg, J., 1913. Coleoptera mediterranea orientalis que in Aegypto, Palestina, Syria, Caramania at que in Anatolia occidentali anno 1904. Öfversigt af Finska Vatenkaps.-Soc. Förhandlingar 55 (a), 19 : 1-281 (1912-1913).
- Tomov, V. and B. Gruev, 1975. Chrysomelidae (Coleoptera) Collected by K.M. Guichard in Turkey, Greece and Yugoslavia. *Univ. Plovdiv «Paissi Hilendarski»*, 13 (4) : 134-150.
- Tuatay, N., A. Kalkandelen ve N. Aysev, 1972. Nebat Koruma Müzesi Böcek Katoloğu, T.C. Tarım Bakanlığı, Ziraî Mücadele ve Ziraî Karantina Gen. Müd. Yayınları, Ankara, 119 s.

- Warchalowski, A., 1935. Revision der Gattung *Labidostomis* Germar, 1824 (Col. Chrysomelidae, Clytrinae). *Pol. Pismo ent.*, 55 : 621-765.
- Weise, J. in Erichson, W. F., (1882-1893). *Naturgeschichte der Insekten Deutschlands*. VI, Berlin, 1161 pp.
- \_\_\_\_\_, 1884. Beitrag zur Chrysomeliden-Fauna von Amasia. *Dtsch. ent. Z.*, 28 (1) : 157-160.
- \_\_\_\_\_, 1889. Zwei neue Deutsche Chrysomeliden-varietäten. *Dtsch. ent. Z.*, 1 : 128.
- \_\_\_\_\_, 1897. Nachtrag neue Chrysomeliden aus Angora. *Steet. ent. Zeit.*, 58 : 62-69.
- \_\_\_\_\_, 1900. Neue Coleopteres aus Kleinasien. *Dtsch. ent. Z.*, 1 : 132-140.
- \_\_\_\_\_, 1901. Nachtrag zum Verzeichnisse Kleinasiatischer Coleopteres. *Dtsch. ent. Z.*, II : 203-205.
- \_\_\_\_\_, 1908. Coleopterologische Notiz. *Wien. ent. Zeit.*, 27 : 218.
- Winkler, A., 1932. *Catalogus Coleopterorum Palearcticae*, I, II, (1927-1932), Wien