

Original araştırma (Original article)

Contribution to the Ichneumoninae (Hymenoptera, Ichneumonidae) fauna of Turkey, with description of three new species

Matthias RIEDEL¹

Saliha ÇORUH²

Hikmet ÖZBEK^{2*}

Summary

The present study comprises 91 Ichneumoninae species in 34 genera, mainly collected from Eastern part of Turkey (total 390 specimens). Of these, 53 species and 12 genera were new records for the Turkish fauna. Additionally, three species, *Coelichneumon nigritor* sp. nov., *Coelichneumon problematicus* sp. nov. and *Ichneumon sexcinctoides* sp. nov., were described as new for the science. With this study the known Turkish Ichneumoninae increases to 156 species. For the known species, our findings indicate a much wider distribution area than was hitherto known.

Key words: Ichneumonidae, Ichneumoninae, new records, new species, Turkey

Anahtar sözcükler: Ichneumonidae, Ichneumoninae, yeni kayıt, yeni türler, Türkiye

Introduction

Hymenopterists, in particular, and entomologists, in general, are well aware of the Turkish insect fauna, propitiated by the privileged geographical situation of the country. The Ichneumonidae represent one of the largest families of the Hymenoptera. Despite their important role in the biological pest control, the taxonomy, ecology, and geographical distribution of many groups of Ichneumonidae remain insufficiently known, even in well studied areas, such as Europe.

The subfamily Ichneumoninae is a very large group of Ichneumonidae with more than 1700 described species in the Palaearctic region (Yu et al., 2005). The

1 Amselweg 9 A D-29683 Bad Fallingbostel, Germany

2 Atatürk University, Faculty of Agriculture, Department of Plant Protection, 25240 Erzurum, Turkey

* Sorumlu yazar (Corresponding author) e-mail: hozbek@atauni.edu.tr

Alınış (Received): 28.09.2009 Kabul ediliş (Accepted): 13.01.2010

members of this subfamily mainly parasitize lepidopteran larvae and pupae; the offspring always emerges from the pupa. Although a rich fauna of Ichneumonidae can be expected for Turkey (Özbek et al., 2003), our knowledge of the Turkish Ichneumoninae is still fragmentary. A recent lists report 93 species in 40 genera for Turkey (Özbek et al., 2003; Çoruh et al., 2005), more recently Riedel (2008 a) added seven species for the Turkish fauna and described three new species from Turkey, *Coelichneumon pararudis* Riedel, 2008, *Coelichneumon paraviolaceiventris* Riedel, 2008, and *Coelichneumon rufigaster* Riedel, 2008. Although present study increases the known Turkish Ichneumoninae to 156 species, it should be mentioned that we are still some way far from having a complete knowledge of Ichneumoninae species possibly existing in Turkey.

Material and Methods

The Ichneumoninae recorded in this paper were collected during 1966- 2005 by the use of sweep netting, mainly in Eastern Turkey, total 390 specimens. Some specimens were also obtained from Malaise traps. To avoid misinterpretations, we excluded the specimens which have not been identified with certain accuracy, e.g. some species of the subtribe Amblytelina (sensu Heinrich). These specimens should to be studied in more comprehensive revisions of several genera of Ichneumoninae in the future. Material of the tribe Phaeogenini was not included in this contribution.

Most of the reference material is housed in the collection of the Entomology Museum Erzurum, Turkey (EMET), holotypes of *Coelichneumon nigritor* sp. nov. and *Coelichneumon problematicus* sp. nov. in the Zoologische Staatssammlung, Munich, Germany, and the paratypes of *Ichneumon sexcinctoides* sp. nov. and *C. nigritor* in the personal collection of the first author. The tribes, genera, and species are listed in the alphabetic order according the recent Interactive Catalogue of World Ichneumonidae (Yu et al., 2005). The distributional records were also used from this catalogue.

Results and Discussion

Heresiarchini

Amblyjoppa fuscipennis (Wesmael, 1845)

Material examined: Erzurum: Atatürk University Fields, 9.VII.1996, 1 ♀, leg. S. Çoruh, Palandöken, 2400 m, 6.VI.1996, 2 ♀♀, 2 ♂♂, leg. E. Yıldırım, 1 ♀, 2 ♂♂, S. Çoruh, 1.VII.1997, 4 ♂♂, 23.VII.1997, 3 ♀♀, 4 ♂♂, leg. S. Çoruh, 7.VII.1996, 1 ♂, 23.VIII.1996, 1 ♂, leg. E. Yıldırım.

Distribution: Palaearctic, known from Turkey (Fahringer, 1922, Kolarov, 1995; Özbek et al., 2003).

***Coelichneumon bohemani* (Holmgren, 1864)**

Material examined: Erzurum: Pasinler, Çalıyazı, 2400 m, 11.VII.1997, 1 ♂, leg. S. Çoruh, Pazaryolu, Karataş, 2200 m, 05.VII.2000, 1 ♂, leg. Ö. Çalmaşur.

Distribution: Western Palearctis, new for Turkey.

***Coelichneumon comitator* (Linnaeus, 1758)**

Material examined: Erzurum: Şenkaya, Gaziler, Çakırbaba Pass, 2450 m, 9.VIII.2003, 1 ♀, leg. S. Çoruh, 14.VIII.1998, 1 ♀, leg. E. Yıldırım.

Distribution: Palaeearctis, known from Turkey (Özbek et al., 2003).

***Coelichneumon dorsosignatus* (Berthoumieu & Eversmann, 1894)**

Material examined: Artvin: Genya Mountain, 1900 m, 14.VII.2003, 1 ♂, leg. C. Güçlü; Erzurum: Konaklı, 2000 m, 11.VII.2003, 1 ♂, leg. E. Yıldırım, Palandöken, 2400 m, 23.VIII.1987, 1 ♂, leg. H. Özbek.

Distribution: Palaeearctis, known from Turkey (Kolarov, 1994).

***Coelichneumon nudicoxator* Aubert, 1966**

Material examined: Erzurum: Atatürk University Fields, 1850 m, 15.VI.1994, 1 ♀, leg. E. Yıldırım, Oltu, Çamlıbel, 1750m, 2.VII.1997, 1 ♀, leg. E. Yıldırım.

Distribution: Eastern Mediterranean, known from Turkey (Riedel, 2008 a).

***Protichneumon fusorius* (Linnaeus, 1761)**

Material examined: Artvin: Yusufeli, 2-8 km SW Altıparmak 1300 m, 25-27.VII.2005, 1 ♀, leg. H. Özbek; Erzurum: Konaklı, 2000 m, 11.VII.2003, 1 ♂, leg. E. Yıldırım, Palandöken, 2400 m, 23.VII.1997, 1 ♂, leg. S. Çoruh, Pazaryolu, 27.VIII.1997, 1 ♀, 1 ♂, leg. E. Yıldırım, Şenkaya, Akşar, 1200 m, 22.VIII.1997, 1 ♀, leg. E. Yıldırım, Tortum, Şenyurt, 23.VI.1996, 1 ♀, leg. E. Yıldırım, .Uzundere, Balıklı, 1040 m, 29.VI.2003, 1 ♂, leg. S. Çoruh.

Distribution: Palaeearctis, known from Turkey (Kolarov, 1995; Özbek et al., 2003).

***Syspasis carinator* (Fabricius, 1798)**

Material examined: Kars: Sarıkamış, Karakurt, Karayolları Çesmesi 1500 m, 9-27.VIII.2004, 1 ♂, obtained from Malaise trap.

Distribution: Western Palearctis, genus and species new for Turkey.

***Syspasis scutellator* (Gravenhorst, 1829)**

Material examined: Erzurum: Atatürk University Fields, 1850 m, 20-29.VII.2003, 1 ♂, obtained from malaise trap; Kars: Sarıkamış, Akkurt, 1500 m, 19.VI.2004, 1 ♀, leg. H. Özbek.

Distribution: Palaearctis, new for Turkey.

Listrodromini

***Anisobas cingulatellus* Horstmann, 1997**

Material examined: Erzurum: Ilıca, Rizekent 2200 m, 30.VII.1998, 1 ♀, leg. E. Yıldırım; Oltu, Çamlıbel, 1500 m, 2.VII.1997, 1 ♀, 1 ♂, leg. E. Yıldırım..

Distribution: Palaearctis, known from Turkey (Yurtcan et al., 1999).

***Anisobas hostilis* (Gravenhorst, 1820)**

Material examined: Kars: Sarıkamış, Karakurt, Karayolları Çesmesi, 1500 m, 27.VI.2006, 1 ♂, leg. C. Güçlü.

Distribution: Palaearctis, known from Turkey (Yurtcan et al, 1999; Özbek et al., 2003).

***Anisobas rebellis* Wesmael, 1845**

Material examined: Artvin: Yusufeli, İşhan 1100 m, 15.VI.2006, 1 ♀, leg. H. Özbek, 26.X.2004, 1 ♀, leg. H. Özbek; Bingöl: Karlıova, Soğukçeşme, 1415 m, 10.VIII.2004, 1 ♀, leg. S. Çoruh; Erzurum: Atatürk University Fields, 1850 m, 12.VI.1966, 1 ♀, leg. H. Özbek; Konya: Gurağaç, Güneysınır, 28.VII.2000, 1 ♀, leg. M. Kesdek.

Distribution: Western Palaearctis, new for Turkey.

***Listrodromus nyctheremus* (Gravenhorst, 1820)**

Material examined: Erzurum: Olur, Yeşilbağlar, 1000 m, 29.VI.2003, 1 ♀, leg. S. Çoruh.

Distribution: Palaearctis, known from Turkey (Özbek et al., 2003).

***Neotypus coreensis* Uchida, 1930**

Material examined: Erzurum: Olur, Süngübayır, 20.VII.1994, 1 ♀, leg. İ. Aslan.

Distribution: Holarctis, new for Turkey.

Remark: although this species has large distribution only one specimen has been found in Turkey so far.

Ichneumonini

***Baranisobas ridibundus* (Gravenhorst, 1829)**

Material examined: Erzurum: Palandöken 2300 m, 1.VII.1996, 1 ♂, leg. S. Fırat, Şenkaya, Turnalı, 1750 m, 29.VII.1996, 1 ♂, leg. E. Yıldırım.

Distribution: Western Palaearctis, genus and species new for Turkey.

***Barichneumon albicaudatus* (Fonscolombe, 1847)**

Material examined: Erzurum: Palandöken, 2400 m, 23.VII.1996, 1 ♀, leg. S. Çoruh.

Distribution: Palaearctis, known from Turkey (Özdemir, 1996).

***Barichneumon bilunulatus* (Gravenhorst, 1829)**

Material examined: Erzurum: Atatürk University Fields, 1850 m, 11.VI.1980, 1 ♂, leg. H. Özbek, Köprüköy, 19.VII.1990, 1 ♀, leg. E. Yıldırım, Aşkale, 1700 m, 23.V.2000, 1 ♂, leg. Ö. Çalmaşur, Oltu, Sarısaz, 1450 m, 24.V.2000, 1 ♂, leg. C. Güçlü; Kars: Sarıkamış, Akkurt, 19.VI.2004, 1 ♂, leg. H. Özbek, Karakurt, Karayolları Çeşmesi, 40°07'870''N 42°31'855''E, 1500 m, 2.V.2000, 1 ♂, leg. Ö. Çalmaşur, 15.VIII.2005, 1 ♂, leg. H. Özbek; 7.X.2005, 1 ♂, leg. H. Özbek.

Distribution: Palaearctis, known from Turkey (Aubert, 1993).

***Barichneumon chionomus* (Wesmael, 1845)**

Material examined: Kars: Sarıkamış, Kalebaşı, 25.VIII.1997, 1 ♂, leg. E. Yıldırım.

Distribution: Western Palaearctis, known from Turkey (Özdemir, 1996).

***Barichneumon plagarius* (Wesmael, 1848)**

Material examined: Erzurum: İspir, Madenköprübaşı, 1450 m, 1.VII.1996, 1 ♀, leg. E. Yıldırım.

Distribution: Western Palaearctis, new for Turkey.

Remark: although this species has large distribution only one specimen has been found in Turkey so far.

***Cratichneumon fugitivus* (Gravenhorst, 1829)**

Material examined: Erzincan: Üzümlü, Avcılar, 1330 m, 25.V.2005, 1 ♂, leg. C. Güçlü.

Distribution: Western Palaearctis, new for Turkey.

***Ctenichneumon castigator* (Fabricius, 1793)**

Material examined: Erzurum: Palandöken, 2400 m, 29.VII.1996, 1 ♂, leg. S. Çoruh.

Distribution: Palaearctis, new for Turkey.

Remark: although this species has large distribution only one specimen has been found in Turkey so far.

***Ctenichneumon divisorius* (Gravenhorst, 1820)**

Material examined: Ardahan: Çıldır, 20.VIII.1996, 1 ♂, leg. M. Şirin; Erzurum: Pasinler, Pelitli 2200 m, 1 ♂, 14.VII.1998, leg. E. Yıldırım; Manisa: 1.IX.1996, 1 ♀, leg. Y. Çınar.

Distribution: Palaearctis, new for Turkey.

***Ctenichneumon funereus* (Geoffroy, 1785)**

Material examined: Erzurum: Uzundere, 1000 m, 8.IX.2005, 1 ♂, leg. S. Çoruh.

Distribution: Palaearctis and Orientalis, new for Turkey.

Remark: although this species has large distribution only one specimen has been found in Turkey so far.

***Ctenichneumon inspector* (Wesmael, 1845)**

Material examined: Erzurum: Palandöken, 2400 m, 9.VII.1996, 2 ♂♂, leg. E. Yıldırım, 23.VII.1996, 1 ♀, 29.VII.1996, 1 ♀, leg. S. Çoruh..

Distribution: Palaearctis, new for Turkey.

***Ctenichneumon melanocastanus* (Gravenhorst, 1820)**

Material examined: Bayburt: Kopdağı, 2400 m, 13.VIII.1997, 1 ♂, leg. Çalmaşur; Erzurum: Palandöken, 2400 m, 23.VII.1996, 1 ♂, 1 ♀, leg. S. Çoruh; Kars: Sarıkamış, Karakurt, Karayolları Çesmesi, 1500 m, 40°07'870''N 42°31'855'' E, 8-23.VI.2005, 1 ♂, obtained from Malasia trap.

Distribution: Palaearctis, known from Turkey (Çoruh et al., 2005).

***Ctenichneumon panzeri* (Wesmael, 1845)**

Material examined: Erzurum: Atatürk University Fields, 1850 m, 20-29.VII.2003, 1 ♂, obtained from Malaise trap, Oltu, 25.VIII.1993, 1 ♂, leg. G. Tozlu, Palandöken 2400 m, 1.VII.1996, 1 ♂, leg. E. Yıldırım, Şenkaya, Turnalı, 12.VI.1992, 1 ♂, leg. E. Yıldırım.

Distribution: Palaearctis and Orientalis, new for Turkey.

***Ctenichneumon repentinus* (Gravenhorst, 1820)**

Material examined: Bayburt: Kopdağı, 2400 m, 13.VIII.1992, 1 ♂, leg. I. Aslan; Erzurum: Horasan, 1 ♀, 11.V.1973, leg. M. Doğanlar, Oltu, Çamlıbel, 1750 m, 2.VII.1997, 1 ♂, leg. E. Yıldırım, Sütkans, 25.VI.1996, 1 ♂, leg. E. Yıldırım, Palandöken 2400 m, 7.VII.1996, 1 ♂, leg. E. Yıldırım, 9.VII.1996, 1 ♂, leg. E. Yıldırım.

Distribution: Palaearctis, new for Turkey.

***Diphyus amatorius* (Müller, 1776)**

Material examined: Erzincan: Bahçe Kültürleri Araştırma Enstitüsü, 1250 m, 25.VI.1994, 1 ♂, leg. E. Yıldırım; Erzurum: Süngübayır, Olur, 1850 m, 30.VII.1999, 1 ♀, leg. İ. Aslan, 20.VII.1994, 1 ♂, leg. İ. Aslan, Şenkaya, Turnali, 1750 m, 25.VII.1996, 1 ♂, leg. E. Yıldırım.

Distribution: Palaearctis, known from Turkey (Özbek et al., 2003).

***Diphyus mercatorius* s.str. (Fabricius, 1793)**

Material examined: Erzurum: Atatürk University Fields, 1850 m, 13.VII.1996, 1 ♂, S. Çoruh, 22.VII.1999, 1 ♂, leg. S. Çoruh; Dutçu, Komyolu, 19.VIII.1998, 3 ♂♂, leg. S. Çoruh, Palandöken, 2400 m, 1.VII.1996, 1 ♂, 7.VII.1996, 1 ♂, 9.VII.1996, 1 ♀, 1 ♂, 23.VII.1996, 2 ♂♂, leg. E. Yıldırım,, Ilıca, Atlıkonak, 2000 m, 29.VI.1999, 1 ♂, leg. Ö. Çalmaşur, Hınıs, Söylemez 1650 m, 24.VI.2005, 1 ♂, leg. E. Yıldırım, Horasan, Aras Vadisi, 4.VI.2000, 1 ♂, leg. H. Özbek, Oltu, Başaklı, 18.IV.1972, 1 ♀, leg. H. Özbek, Çamlıbel, 1750 m, 2.VII.1997, 1 ♀, 1 ♂, leg. E. Yıldırım, Karakol, 2.VII.2000, 1 ♂, leg. Ö. Çalmaşur, Pasinler, Çalıyazı, 2400 m, 11.VII.1997, 1 ♂, leg. S. Çoruh, Şenkaya, Gaziler, Soğanlı Mountain, 2450 m, 4.VIII.2005, 1 ♂, leg. S. Çoruh, Tekman Plateau, 2450 m, 19.VII.2005, 1 ♀, leg. C. Güçlü, Tortum, Aşağısivri, 18.VIII.1998, 1 ♂, leg. Ö. Çalmaşur; Kars: Sarıkamış, Karakurt, 1600 m, 23.VI.2005, 1 ♂, leg. E. Yıldırım, Karayolları Çeşmesi, 1500 m, 19.VI.2004, 1 ♀, leg. H. Özbek.

Remaks: In the Turkish material we found 3 ♂♂ specimens with a black instead of yellow flagellum. Since we do not find other differences, we suppose these specimens as conspecific to *D. mercatorius*.

Material examined: Erzurum: Oltu, Çamlıbel, 1750 m, 2.VII.1997, 2 ♂♂, leg. E. Yıldırım, Pazaryolu, Akbulut, 3.VII.1997, 1 ♂, leg. E. Kılıç.

Distribution: Palaearctis, known from Turkey (Heinrich, 1978; Kolarov, 1995; Özbek et al., 2003).

***Diphyus ochromelas* (Christ, 1790)**

Material examined: Erzurum: Oltu, Başaklı, Karadağ, 2100 m, 24.VII.2005, 1 ♂, leg. H. Özbek, Şenkaya, Gaziler, Çakırbaba Pass, 2450 m, 9.VIII.2003, 1 ♀, leg. S. Çoruh, Tortum, Aksu Yaylası, 2250 m, 14.VII.1996, 2 ♂♂, leg. E. Yıldırım.

Distribution: Palaearctis, known from Turkey (Fahringer, 1922, Kolarov, 1995).

***Diphyus palliatorius* (Gravenhorst, 1829)**

Material examined: Artvin: Genya Mountain, 1860 m, 28.VII.2004, 1 ♀, leg. H. Özbek.

Distribution: Palaearctis, known from Turkey (Fahringer, 1922, Kolarov, 1995).

***Diphyus pseudomercator* s.str. Heinrich, 1978**

Material examined: Erzurum: Atatürk University Fields,, 1850 m, 26.VII.1966, 2 ♂♂, leg. H. Özbek, 6.VI.1971, 1 ♂, leg. M. Doğanlar, Dutçu, Komyolu, 18.VII.1999, 1 ♂, leg. S. Çoruh, Palandöken 2400 m, 7.VII.1996, 3 ♀♀, leg. E. Yıldırım, 9.VII.1996, 1 ♂, leg. S. Çoruh, 23.VII.1997, 2 ♂♂, 1 ♀ leg. S. Çoruh, Horasan, 15.VI.1973, 1 ♀, leg. M. Doğanlar, Ilıca, Rizekent 2200 m, 30.VII.1998, 1 ♂, leg. E. Yıldırım Pasinler, Serçeboğazı 1750 m, 15.VI.2002, 1 ♀, leg. H. Özbek, Şenkaya, Turnalı, 12.VI.1992, 1 ♀, leg. E. Yıldırım, Tortum, Aşağı Meydanlar, 1700 m, 1.IX.2001, 1 ♂, leg. H. Özbek, Tafta, 1900 m, 14.VII.1996, 1 ♂, leg. E. Yıldırım.

Distribution: Western Palaearctis, known from Turkey (Heinrich, 1978, Özbek et al., 2003).

***Diphyus pseudomercator* ssp. *hexaleucos* Heinrich, 1978**

Material examined: Erzurum: Atatürk University Fields, 1850 m, 21.VII.1966, 1 ♀, leg. H. Özbek, Dumlu, 1800 m, 28.VII.1994, 1 ♂, leg. Y. Kansul, Güngörmez, 4.VIII.1990, 1 ♂, leg. E. Yıldırım, Palandöken, 2400 m, 1.VII.1996, 1 ♂, leg. E. Yıldırım, Tekman Plateau, 2450 m, 19.VII.2005, 1 ♂, leg. C. Güçlü.

Distribution: Western Palaearctis, known from Turkey (Heinrich, 1978, Özbek et al., 2003).

***Diphyus quadripunctorius* (Müller, 1776)**

Material examined: Artvin: Yusufeli, Darıca, 895 m, 15.VI.2006, 1 ♂, leg. H. Özbek; Erzurum: Oltu, Subatık 1400 m, 12.IV.2003, 1 ♀, leg. H. Özbek, Pasinler, Pelitli, 2200 m, 14.VII.1998, 1 ♂, leg. E. Yıldırım.

Distribution: Palaearctis, known from Turkey (Fahringar, 1922, Kolarov, 1989).

***Eutanyacra glaucatoria* (Fabricius, 1793)**

Material examined: Kars: Sarıkamış, Yeniköy, 1950 m, 1 ♂, 17.VIII.1998, 1 ♂, leg. İ. Aslan.

Distribution: Palaearctis, genus and species new for Turkey.

Remark: Although this species has large distribution only one specimen has been found in Turkey so far.

***Eutanyacra picta* (Schrank, 1776)**

Material examined: Erzurum: Atatürk University Fields, 1850 m, 2.VII.1970, 1 ♂, leg. H. Özbek.

Distribution: Palaearctis and Orientalis, new for Turkey.

Remark: although it has very large distribution in the world, only one specimen has been found in Turkey so far.

***Exephanes ischioxanthus* (Gravenhorst, 1829)**

Material examined: Erzurum: Atatürk University Fields, 1850 m, 13.VII.1996, 1 ♂, leg. S. Tosun, 20-29.VII.2003, 1 ♂, obtained from Malaise trap, Olur, Süngübayır 1850 m, 30.VII.1999, 1 ♂, leg. İ. Aslan, Pasinler, Büyükdere, 1780 m, 11.VII.1996, 1 ♂, leg. E. Yıldırım.

Distribution: Western Palaearctis, new for Turkey.

***Hepiopelmus melanogaster* (Gmelin, 1790)**

Material examined: Artvin: Yusufeli, Altıparmak, 1100 m, 1 ♂, 5.VII.1994, leg. E. Yıldırım; Erzurum: Pasinler, Rabat, 2400 m, 11.VII.1996, 1 ♂, leg. S. Çoruh.

Distribution: Palaearctis, genus and species new for Turkey.

***Homotherus locutor* (Thunberg, 1824)**

Material examined: Erzurum: Şenkaya, Turnalı, 1750 m, 25.VII.1996, 1 ♂, leg. E. Yıldırım.

Distribution: Palaearctis, genus and species new for Turkey.

Remark: although this species has large distribution only one specimen has been found in Turkey so far.

***Hoplismenus bidentatus* (Gmelin, 1790)**

Material examined: Erzurum: Atatürk University Fields, 1850 m, 24.VI.1997, 1 ♀, leg. Ö. Çalmaşur, Tortum, Esendurak, 1450 m, 3.VIII.2004, 1 ♀, leg. H. Özbek.

Distribution: Palaearctis, known from Turkey (Kolarov, 1989).

***Ichneumon balteatus* Wesmael, 1845**

Material examined: Erzurum: Oltu, 25.VI.1996, 1 ♀, leg. E. Yıldırım, Şenkaya, Turnalı, 1750 m, 10.VIII.1997, 1 ♂, leg. E. Yıldırım.

Distribution: Palaearctis, known from Turkey (Özdemir, 1996).

***Ichneumon bucculentus* Wesmael, 1845**

Material examined: Bayburt: Kopdağı, 2400 m, 25.VI.2004, 1 ♂, leg. Ö. Çalmaşur; Erzurum: Duççu, Komyolu, 2000 m, 18.VII.1999, 1 ♂, leg. S. Çoruh, Oltu, Çamlıbel 1700 m, 14.VII.1996, 1 ♀, 2.VII.1999, 1 ♂, leg. E. Yıldırım.

Distribution: Palaearctis, known from Turkey (Fahringer, 1922, Hilpert, 1992).

***Ichneumon cessator* Müller, 1776**

Material examined: Erzurum: İspir, Çayırözü, 2000 m, 21.VI.1997, 1 ♀, leg. E. Kılıç, Olur, Süngübayır, 30.VII.1999, 1 ♂, leg. İ. Aslan.

Distribution: Palaearctis, new for Turkey.

***Ichneumon confusor* Gravenhorst, 1820**

Material examined: Kars: Sarıkamış, 1900 m, 23.VI.2005, 1 ♀, leg. E. Yıldırım.

Distribution: Palaearctis, new for Turkey.

Remark: although this species has large distribution only one specimen has been found in Turkey so far.

***Ichneumon coniger* Tischbein, 1876**

Material examined: Erzurum: Oltu, Çamlıbel, 1750 m, 2.VII.1997, 1 ♀, leg. E. Yıldırım, Şenkaya, Turnalı, 12.VI.1992, 1 ♀, leg. E. Yıldırım.

Distribution: Western Palaearctis, new for Turkey.

***Ichneumon erythromerus* Wesmael, 1857**

Material examined: Erzurum: Oltu, Sütkans, 1900 m, 25.VI.1996, 1 ♀, leg. E. Yıldırım.

Distribution: Western Palaearctis, new for Turkey.

Remarks: The specimen differs from the typical European material (Hilpert, 1992) by its flagellum with 41 segments and the very scattered punctures on the lower half of femur III. Additionally, although it has large distribution in the world only one specimen has been found in Turkey.

***Ichneumon exilicornis* Wesmael, 1857**

Material examined: Erzurum: Atatürk University Fields, 1850 m, 9.VII.1996, 2 ♂♂, S. Çoruh, Palandöken, 2200 m, 9.VII.1996, 1 ♀, leg. E. Yıldırım, Aşkale, 1950 m, 14.VII.1999, 1 ♀, leg. S. Çoruh, Pasinler, 19.VI.1996, 1 ♀, leg. E. Yıldırım.

Distribution: Western Palaearctis, new for Turkey.

***Ichneumon extensorius* Linnaeus, 1758**

Material examined: Artvin: Genya Mountain, 1600 m, 1 ♂, 10.VI.2005, leg. C. Güçlü.

Distribution: Palaearctis, known from Turkey (Fahringer, 1922; Kolarov, 1995).

***Ichneumon fulvicornis* Gravenhorst, 1829**

Material examined: Bayburt: Kopdağı, 2300 m, 25.VI.2004, 2 ♀♀, leg. S. Çoruh; Erzurum: Tortum, Aksu Yaylası, 1800 m, 17.V.2004, 1 ♀, leg. M. Kesdek.

Distribution: Western Palaearctis, new for Turkey.

***Ichneumon gracilicornis* Gravenhorst, 1829**

Material examined: Erzurum: İspir, Çayırözü 2000 m, 23.VII.1998, 1 ♀, leg. E. Yıldırım, Palandöken 2400 m, 23.VII.1997, 1 ♀, leg. S. Çoruh.

Distribution: Palaearctis, known from Turkey (Hilpert, 1992)

***Ichneumon gratus* Wesmael, 1855**

Material examined: Erzurum: Atatürk University Fields, 1850 m, 6.VI.1971, 1 ♂, leg. M. Doğanlar.

Distribution: Palaearctis, new for Turkey.

Remark: although this species has large distribution only one specimen has been found in Turkey so far.

***Ichneumon haematofemur* Heinrich, 1980**

Material examined: Bayburt: Kopdağı, 2300 m, 25.VI.2004, 1 ♀, leg. Ö. Çalmaşur.

Distribution: Southeastern Europe, Turkey (Heinrich, 1980).

***Ichneumon ignobilis* Wesmael, 1855**

Material examined: Erzurum: Oltu, Çamlıbel, 1500 m, 2.VII.1997, 1 ♀, leg. E. Yıldırım.

Distribution: Western Palaearctis, new for Turkey.

Remark: although this species has large distribution only one specimen has been found in Turkey so far.

***Ichneumon languidus* Wesmael, 1845**

Material examined: Erzurum: Oltu, Sütkans, 1700 m, 18.VI.1996, 1 ♀, leg. E. Yıldırım.

Distribution: Western Palaearctis, new for Turkey.

***Ichneumon lautatorius* Desvignes, 1856**

Material examined: Erzurum: Palandöken, 1.VII.1996, 1 ♂, leg. E. Yıldırım, Ilıca, Atlıkonak, 2000 m, 11.VII.2000, 1 ♂, leg. E. Yıldırım, İspir, Madenköprübaşı, 7.VII.1996, 1 ♀, leg. E. Yıldırım, Oltu, Sütkans 1700 m, 25.VI.1996, 1 ♀, leg. E. Yıldırım, Pasinler, 13.VI.1999, 1 ♀, leg. E. Yıldırım, 12.VI.1996, 1 ♀, leg. S. Çoruh, Pelitli, 14.VII.1998, 1 ♀, leg. E. Yıldırım, Tortum, Aşağısivri 1700 m, 19.VIII.1998, 1 ♀, leg. Ö. Çalmaşur; Iğdır: Bayraktutan, 40°00'949''N 43°55'105''E 890 m, 17.VIII.2005, 1 ♀, leg. H. Özbek; Muğla: 1.IX.1983, 1 ♀, leg. H. Padem.

Distribution: Palaearctis, new for Turkey.

***Ichneumon minutorius* Desvignes, 1856**

Material examined: Artvin: Şavşat, 1300 m, 19.VIII.2004, 1 ♀, leg. H. Özbek, Erzurum: Atatürk University Fields, 1850 m, 15.VII.1996, 1 ♂, leg. E. Yıldırım.

Distribution: Palaeoarctis, known from Turkey (Hilpert, 1992).

***Ichneumon ostentator* Heinrich, 1978**

Material examined: Erzurum: Atatürk University Fields, 1850 m, 5.VII.1997, 1 ♂, leg. S. Çoruh, Palandöken 2400 m, 22.VI.1966, 1 ♂, leg. H. Özbek, 23.VII.1996, 1 ♀, leg. S. Çoruh, Pasinler, Rabat 2400 m, 13.VI.1996, 1 ♀, leg. E. Yıldırım, Uzundere, Dikyar, 1000 m, 24.V.1994, 1 ♀, leg. İ. Aslan.

Distribution: Western Palaeoarctis, known from Turkey (Heinrich, 1978, Hilpert, 1992).

***Ichneumon phaeostigmus* Wesmael, 1857**

Material examined: Erzurum: Pasinler, Çalıyazı 2400 m, 1 ♀, 11.VII.1997, leg. S. Çoruh.

Distribution: Western Palaeoarctis, new for Turkey.

***Ichneumon proletarius* Wesmael, 1848**

Material examined: Ardahan: Posof, Aşıkzulali 1960-2200 m, 26.VII.2005, 1 ♀, leg. C. Güçlü, Ilgar Mountain, 2050 m, 18.VIII.2004, 2 ♀♀, C. Güçlü; Artvin: Genya Mountain, 1860 m, 28.VII.2004, 3 ♀♀, leg. C. Güçlü; Erzurum: Atatürk University Fields, 1850 m, 8.IX.1980, 1 ♀, leg. H. Özbek, Köşk, 1900 m, 20.VI.1996, 1 ♀, leg. İ. Aslan, Palandöken 2200 m, 6.VIII.1996, 1 ♂, leg. E. Yıldırım, Ilıca, Rizekent 2200 m, 30.VII.1998, 1 ♀, leg. E. Yıldırım, Sorkumlu 1850 m, 30.VII.1998, 1 ♀, leg. E. Yıldırım, Pasinler 1650 m, 13.VIII.1992, 1 ♀, 13.VI.1996, 1 ♀, leg. E. Yıldırım, Şenkaya, Gaziler 1700 m, 14.VIII.1998, 1 ♂, leg. E. Yıldırım, Turnalı, 2000 m, 2.IX.1988, 1 ♀, leg. E. Yıldırım, Tortum, Aksu 1750 m, 12.VIII.1998, 1 ♂, leg. E. Yıldırım; Kars: Sarıkamış, Yeniköy 1950 m, 17.VIII.1998, 1 ♀, leg. İ. Aslan.

Distribution: Palaeoarctis, known from Turkey (Hilpert, 1992).

***Ichneumon sarcitorius* s. str. Linnaeus, 1758**

Material examined: Bayburt: Kopdağı, 2300 m, ♂, 25.VI.2004, 1 ♂, 6.VIII.2003, 1 leg. S. Çoruh; Erzurum: Atatürk University Fields, 1850 m, 6.VI.1971, 1 ♂, leg. M. Doğanlar, 22.VI.1966, 1 ♂, leg. H. Özbek, Palandöken, 2400 m, 1.VII.1996, 1 ♂, 6.VIII.1996, 1 ♂, 9.VII.1996, 1 ♂, leg. S. Çoruh, Oltu, Başaklı, 1700 m, 7.IX.1988, 1 ♂, leg. H. Özbek, Çamlıbel 1750 m, 2.VII.1997, 1 ♂, leg. E. Yıldırım, Şenkaya, Turnalı 1750 m, 23.VII.1996, 1 ♂, leg. E. Yıldırım, Tortum 1600 m, 27.VII.1998, 1 ♂, leg. E. Yıldırım.

Distribution: Palaearctis, known from Turkey (Hilpert, 1992; Kolarov et al., 1997).

***Ichneumon sexcinctus* Gravenhorst, 1829**

Material examined: Erzurum: Atatürk University Fields, 1850 m, 7.VI.1996, 1 ♀, leg. E. Yıldırım.

Distribution: Palaearctis, new for Turkey.

Remark: although this species has large distribution only one specimen has been found in Turkey so far.

***Ichneumon stramentarius* Gravenhorst, 1820**

Material examined: Bayburt: Kopdağı 2400 m, 13.VII.1997, 1 ♂, leg. Ö. Çalmaşur.

Distribution: Palaearctis, known from Turkey (Fahringer; 1922, Kolarov, 1995).

***Ichneumon suspiciosus* Wesmael, 1845**

Material examined: Erzurum: Tortum, Aksukapı, 11 km N 1250 m, 29.VI.2003, 1 ♂, leg. S. Çoruh.

Distribution: Palaearctis, new for Turkey.

Remark: although this species has large distribution only one specimen has been found in Turkey so far.

***Ichneumon terminatorius* Gravenhorst, 1820**

Material examined: Erzincan: Bahçe Kùltürleri Araştırma Enstitüsü, 1250 m, 14.VII.1996, 1 ♂, leg. S. Çoruh; Erzurum: Atatürk University Fields, 1850 m, 1.VII.1994, 1 ♂, leg. E. Yıldırım, Pasinler, Pelitli, 14.VII.1996, 1 ♂, leg. E. Yıldırım, Şenkaya, Turnalı, 1700m, 28.VII.1993, 1 ♂, leg. E. Yıldırım.

Distribution: Palaearctis, known from Turkey (Fahringer & Friese, 1921, Fahringer, 1922, Hilpert, 1992).

***Ichneumon tuberculipes* Wesmael, 1848**

Material examined: Amasya: 14.VII.1989, 1 ♀, leg. A. Tülün.

Distribution: Palaearctis, new for Turkey.

Remark: The specimen differs from typical ones (Hilpert, 1992) by dark reddish-brown legs and reddish-brown tergites 2-5.

***Ichneumon vafer meridionalis* Heinrich, 1929**

Material examined: Erzurum: Palandöken, 28.VI.1997, 1 ♀, leg. S. Çoruh, Ilica, Atlıkonak, 1750 m, 11.VI.2000, 1 ♀, leg. E. Yıldırım.

Distribution: This subspecies was previously only known from Iran, new for Turkey.

Remark: Flagellum with 42 segments.

***Limerodops subsericans* (Gravenhorst, 1820)**

Material examined: Artvin: Şavşat, Yavuzköy 1490 m, 41°13'729'' N 42°23'169''E, 11.VII.2005, 1 ♂, leg. C. Güçlü; Kars: Sarıkamış 1900 m, 23.VI.2005, 1 ♂, leg. E. Yıldırım.

Distribution: Palaearctis, genus and species new for Turkey.

***Obtusodonta equitatoria* (Panzer, 1786)**

Material examined: Erzurum: Atatürk University Fields, 1850 m, 6.VI.1971, 1 ♀, leg. M. Doğanlar, İspir, Madenköprübaşı, 1250 m, 7.VII.1996, 1 ♂, leg. S. Çoruh, Oltu, Çamlıbel, 1750 m, 2.VII.1997, 1 ♀, leg. E. Yıldırım.

Distribution: Palaearctis, known from Turkey (Kolarov, 1989; Özdemir, 1996; Yurtcan et al., 1999).

***Platylabops humilis* (Wesmael, 1857)**

Material examined: Erzurum: Atatürk University Fields, 1850 m, 9.VII.1996, 1 ♀, leg. S. Çoruh, 14.VII.1996, 1 ♂, leg. S. Çoruh, Palandöken 2400 m, 6.VII.1996, 1 ♂, leg. E. Yıldırım, 23.VII.1996, 3 ♂♂, 6.VIII.1996, 2 ♂♂, leg. S. Çoruh, Aşkale, Kopdağı, 16.VI.2000, 1 ♂, leg. Ö. Çalmaşur, Oltu, Tutmaç, 2.VII.2000, 1 ♂, leg. H. Özbek; Kars: Sarıkamış, Karakurt, 1500 m, 2.V.2000, 1 ♂, leg. C. Güçlü.

Distribution: Western Palaearctis, genus and species new for Turkey.

***Probolus crassulus* Horstmann, 2000**

Material examined: Bayburt: Maden, 1650 m, 16.VI.2000, 1 ♂, leg. S. Çoruh; Erzurum: Aşkale, Kopdağı, 2200 m, 16.VI.2000, 1 ♂, leg. Ö. Çalmaşur, Narman, Kireçli, 2.VII.2000, 1 ♂, leg. C. Güçlü, Oltu, Çamlıbel, Karakol, 1.VII.2000, 1 ♂, leg. Ö. Çalmaşur; Rize: 10.VIII.1999, 1 ♀, leg. Binnel; Trabzon: Hanka, 28.VII.1996, 1 ♀, leg. E. Babillioğlu.

Distribution: Western Palaearctis, known from Turkey (Horstmann, 2000).

***Pseudoamblyteles homocerus* Wesmael, 1854**

Material examined: Erzurum: Atatürk University Fields, 1850 m, 2.VII.1968, 1 ♀, leg. H. Yüksel, 20-29.VII.2003, 1 ♂, leg. H. Özbek, 25.VIII.1987, 1 ♂, leg. H. Özbek, Tortum, 1600 m, 27.VII.1998, 1 ♂, leg. E. Yıldırım.

Distribution: Palaearctis, known from Turkey (Özdemir, 1996; Özbek et al., 2003).

***Rictichneumon lombardi* (Berthoumieu, 1897)**

Material examined: Erzurum: Palandöken 2400 m, 23.VII.1996, 4 ♀♀, leg. S. Çoruh, Horasan, Yukarıbademözü, 1600 m, 24.VI.1999, 1 ♂, leg. Ö. Çalmaşur, Ilica, Atlıkonak, 1700 m, 29.VI.1999, 1 ♂, leg. Ö. Çalmaşur, 1900 m, 11.VI.2000, 1 ♀, leg. Ö. Çalmaşur, 21.VII.1998, 1 ♀, leg. Ö. Çalmaşur, 1750 m Oltu, Tutmaç-Başaklı, 1900 m, 1.VII.2000, 1 ♀, leg. Ö. Çalmaşur, Pasinler, Pelitli 2200 m, 14.VII.1998, 1 ♀, leg. E. Yıldırım.

Distribution: Western Palaearctis, known from Turkey (Özbek et al., 2003).

***Spilichneumon occisor* (Fabricius, 1793)**

Material examined: Erzurum: Atatürk University Fields, 1850 m, 30.IX.1995, 1 ♂, leg. A. Aydın, Ilica, Atlıkonak, 2000 m, 16.VI.2000, 1 ♂, leg. M. Kesdek, 2100 m, 21.VI.2004, 2 ♀♀, leg. S. Çoruh; Ilica, Ağzıaçık Pass, 2000 m, 19.VII.2003, 1 ♀, leg. H. Özbek, Pasinler, 17.VII.1992, 1 ♂, leg. M. E. Şahin, Pazaryolu, Karataş Yaylası, 2500 m, 5.VII.2000, 1 ♂, leg. S. Çoruh; Isparta: Deremahallesi 1150 m, 24.V.2005, 1 ♀, leg. H. Özbek; Kars: Sarıkamış, Karakurt, Karayolları Çesmesi, 1500 m, 9.VII.2003, 1 ♀, leg. S. Çoruh.

Distribution: Palaearctis, known from Turkey (Özdemir, 1996; Özbek et al., 2003).

***Spilothyrates illuminatorius* (Gravenhorst, 1820)**

Material examined: Erzurum: Atatürk University Fields, 1850 m, 19.VII.1997, 1 ♀, leg. S. Çoruh.

Distribution: Palaearctis, known from Turkey (Özdemir, 1996; Kolarov et al., 1997; Özbek et al., 2003).

***Spilothyrates nuptatorius* (Fabricius, 1793)**

Material examined: Erzurum: Pasinler, Çalıyazı 2400 m, 11.VII.1997, 1 ♂, leg. S. Çoruh; Iğdır: 6.V.1969, 1 ♀, leg. O. Ecevit.

Distribution: Western Palaearctis, new for Turkey.

***Stenichneumon culpator* (Schrank, 1802)**

Material examined: Erzurum: Uzundere 1000 m, 8.IX.2005, 1 ♀, leg. S. Çoruh.

Distribution: Holarctis, genus and species new for Turkey.

***Thyrateles camelinus* (Wesmael, 1845)**

Material examined: Ardahan: 8.VI.1974, 1 ♂, leg. M. Doğanlar; Artvin: Yusufeli, 15.VIII.1996, 1 ♂, leg. Ş. Aydemir; Erzurum: Dutçu, Komyolu, 2000 m, 18.VI.1999, 2 ♀♀, 1 ♂, leg. S. Çoruh, Horasan, Yukarıbademözü, 24.VI.1999, 1 ♀, leg. Ö. Çalmaşur, 1600 m, 1 ♂, leg. Ö. Çalmaşur, Oltu, Çamlıbel 1750 m, 1 ♀, 2.VII.1997, leg. E. Yıldırım; Kars: Sarıkamış, Karakurt, Karayolları Çeşmesi, 1500 m, 27.VIII-16.IX.2004, 1 ♂, leg. H. Özbek.

Distribution: Palaearctis, new for Turkey.

Remark: *T. camelinus* was reared from *Arctia hebe* (L.) Lepidoptera: Arctiidae).

***Virgichneumon albosignatus* (Gravenhorst, 1829)**

Material examined: Bayburt: Kopdağı, 2400 m, 13.VII.1999, 1 ♂, leg. Ö. Çalmaşur; Erzurum: Atatürk University Fields, 1850 m, 13.VIII.1999, 1 ♀, leg. S. Çoruh, Palandöken 2400 m, 1.VII.1996, 1 ♂, leg. E. Yıldırım, 23.VIII.1996, 1 ♂, leg. S. Çoruh, 28.VI.1997, 1 ♀, leg. S. Çoruh, Şenkaya, Turnalı 1750 m, 28.VII.1993, 1 ♂, leg. E. Yıldırım.

Distribution: Palaearctis, genus and species new for Turkey

***Virgichneumon callicerus* (Gravenhorst, 1820)**

Material examined: Bayburt: Maden, 1650 m, 16.VI.2000, 1 ♂, leg. Ö. Çalmaşur, Kopdağı 2400 m, 13.VIII.1997, 1 ♂, leg. Ö. Çalmaşur; Bingöl: Karlıova Çobantaşı, 1455 m, 10.VII.2004, 1 ♀, leg. H. Özbek; Erzincan: 30.IX.1981, 1 ♂, leg. H. Özışık; Erzurum: Atatürk University Fields, 1850 m, 24.III.1990, 1 ♀, leg. H. Özbek, 7.VI.2003, 1 ♂, leg. H. Özbek, Güngöründü, 21.VIII.1992, 1 ♂, leg. H. Özbek, Palandöken 2200 m, 6.VIII.1996, 2 ♀♀, leg. S. Tosun, 10.VIII.1993, 1 ♀, leg. G. Tozlu, Oltu, Sütkans, 23.VI.1996, 1 ♀, leg. E. Yıldırım, Olur, Süngübayır, 20.VII.1994, 1 ♂, leg. I. Aslan,.

Distribution: Palaearctis, new for Turkey.

***Virgichneumon digrammus* (Gravenhorst, 1820)**

Material examined: Erzurum: Aşkale, 1950 m, 14.VII.1999, 1 ♂, leg. S. Çoruh, Palandöken, 2400 m, 6.VIII.1996, 1 ♂, leg. S. Çoruh, Şenkaya, Turnalı, 1750 m, 12.VI.1992, 1 ♀, leg. E. Yıldırım.

Distribution: Palaearctis, new for Turkey.

***Virgichneumon maculicauda* (Perkins, 1953)**

Material examined: Bayburt: Maden, 1650 m, 16.VI.2000, 1 ♂, leg. Ö. Çalmaşur; Erzurum: Palandöken 2400 m, 28.VI.1997, 13 ♂♂, 1.VII.1996, 3 ♂♂, 7.VII.1996, 1 ♂, leg. E. Yıldırım, 9.VII.1996, 3 ♂♂, 23.VII.1996, 4 ♂♂, leg. S. Çoruh

Ilıca, Atlıkönak, 8.VII.1996, 1 ♂, leg. Ö. Çalmaşur, Rizekent 2200 m, 1 ♂, 30.VII.1998, 1 ♂, leg. E. Yıldırım,.

Distribution: Western Palaearctis and Azerbaijan, new for Turkey.

***Vulgichneumon deceptor* (Scopoli, 1763)**

Material examined: Erzurum: , Palandöken, 2400 m, 7.VII.1996, 1 ♂, leg. E. Yıldırım, Aşkale, Kopdağı, 16.VI.2000, 1 ♂, leg. Ö. Çalmaşur, Oltu, Sarısaz, 18.V.2000, 1 ♂, leg. S. Çoruh Şenkaya, Turnalı 2000 m, 6.VIII.1988, 1 ♂, 23.VII.1996, 1 ♂, 10.VII.1997, 1 ♂, leg. E. Yıldırım.

Distribution: Palaearctis, known from Turkey (Özdemir, 1996).

***Vulgichneumon saturatorius* (Linnaeus, 1758)**

Material examined: Ardahan: Posof, Aşıkzülali 1960-2200 m, 26.VII.2005, 1 ♂, leg. C. Güçlü; Erzurum: Oltu, Sarısaz, 18.V.2000, 1 ♂, leg. S. Çoruh,

Distribution: Palaearctis and Orientalis, new for Turkey.

***Vulgichneumon suavis* (Gravenhorst, 1820)**

Material examined: Erzurum: Şenkaya, Turnalı 1750 m, 10.VIII.1997, 1 ♂, leg. E. Yıldırım.

Distribution: Palaearctis, new for Turkey.

Remark: Although this species has large distribution only one specimen has been found in Turkey so far.

Joppocryptini

***Pseudoplatylabus violentus* (Gravenhorst, 1829)**

Material examined: Iğdır: Bayraktutan, 890 m, 40°00'949"N 43°55'105"E, 17.VIII.2005, 1 ♀, leg. H. Özbek.

Distribution: Palaearctis, genus and species new for Turkey.

Remark: Although this species has large distribution only one specimen has been found in Turkey so far.

Platylabini

***Apaeleticus bellicosus* Wesmael, 1845**

Material examined: Bayburt: Kopdağı 2400 m, 13.VII.1997, 1 ♂, leg. Ö. Çalmaşur; Erzurum: Atatürk University Fields, 1850 m, 11.VI.1990, 3 ♂♂, 23.VI.1979, 1 ♀, 1 ♂, leg. H. Özbek, 23.VI.1980, 1 ♀, leg. H. Özbek, Oltu, Sarısaz, 1450 m, 18.V.2000, 1 ♂, leg. S. Çoruh.

Distribution: Western Palaearctis, genus and species new for Turkey.

***Cyclolabus pactor* (Wesmael, 1845)**

Material examined: Erzurum: Oltu, Başaklı, Karadağ 2100 m, 24.VII.2005, 1 ♀, leg. H. Özbek.

Distribution: Palaearctis, genus and species new for Turkey.

Remark: although this species has large distribution only one specimen has been found in Turkey so far.

***Platylabus iridipennis* (Gravenhorst, 1829)**

Material examined: Erzurum: Aşkale, 1700 m, 23.V.2000, 1 ♂, leg. Ö. Çalmaşur, Oltu, Sarısaz, 1450 m, 18.V.2000, 2 ♂♂, leg. S. Çoruh; Kars: Sarıkamış, Karakurt, 2.V.2000, 1 ♂, leg. Ö. Çalmaşur, 2.V.2000. 1 ♂, leg. C. Güçlü.

Distribution: Palaearctis, new for Turkey.

***Platylabus oehlkei* (Heinrich, 1972)**

Material examined: Erzurum: Atatürk University Fields, 1850 m, 5.VII.1997, 1 ♀, leg. S. Çoruh.

Distribution: Western Palaearctis, new for Turkey.

Taxonomic Remark: This female has the characteristic elevated epicnemia and a very slender flagellum (all segments clearly longer than wide), but differs from the European material (see Riedel, 2008 b) by its coloration with an ivory spot on the hind edge of pronotum, ivory stripe on outer orbits and ivory markings on tegula, femur III darkened in the apical 0.3.

***Platylabus tricingulatus* (Gravenhorst, 1820)**

Material examined: Artvin: Borçka, 12.V.2000, 1 ♂, leg. Ö. Çalmaşur.

Distribution: Palaearctis, known from Turkey (Özdemir, 1996).

Descriptions of the new species

***Coelichneumon nigritor* sp. nov.**

Holotypus: Female, Azerbaijan, Talysch, Suwant, Gosmolian 1600-1800m, 22.-26.V.1999, leg. W. Dolin (Zoologische Staatssammlung München); Paratypus: female, Erzurum, Olur, Süngübayır 2200 m, 24 VII 1996, leg. İ. Aslan (Erzurum, EMET), Paratypus: female, Erzurum, Palandöken 2400 m, 23.VII.1997, leg. S. Çoruh (Collection Riedel).

Female (Fig. 1d-e): Body length 16 mm. Flagellum with 53 segments, first segment 2.0 times and the second 1.7 times as long as wide, together 0.51 times as long as the compound eyes, widest segments about 1.3-1.5 times wider than long. Temples behind the eyes with almost parallel sides. Ocelli rather small, distance of lateral ocellus to compound eye about 1.2 times as long as its diameter.

Malar space 0.5-0.6 times as long as the width of mandibular base. Mesosoma with brownish hairs. Scutellum without lateral carinae, area superomedia horseshoe-like, about as long as wide, costulae indistinct, behind the middle auf area superomedia. Coxa II with scattered puncture, coxa III with scattered punctures in the apical half, with large scopa. Femur III with scattered punctures in the lower third, 3.5-3.6 times longer than high. Third segment of tarsi II 1.5-1.6 times as long as wide. Postpetiole with wide lateral fields, each about 0.9 times as wide as the middle field, middle field with about 8 longitudinal striae. Gastrocoeli large, thyridiae transverse, each about 1.1 times wider than their interval. Tergite 2 about 0,9 times as long as wide, visible parts of ovipositor sheaths about 0.5 times as long as the tergite 7.

Colour black. Ivory are narrow frontal orbits, small markings of outer orbits, markings on vertex; mesosoma and metasoma black, the latter with slightly bluish shine; femora I apically and tibiae I in front yellow-brown; pterostigma black.

Male unknown.

Taxonomic remarks: Females of this new species can be differentiated from all other Palaearctic *Coelichneumon*-species with distinct scopa on coxa III by the combination of black flagellum without ivory stripes, completely black mesosoma and legs, and the high number of flagellomeres.

***Coelichneumon problematicus* sp. nov.**

Holotypus: Female, Iran (Teher.) Rayne 6-IX-1955 F. Schmid (Zoologische Staatssammlung München); Paratypus: Female, Erzurum, Karagöbek Mountains, 2200 m, 5.VII.1983 leg. H. Özbek (Erzurum, EMET); Paratypus: Male, Erzurum, Pasinler, Pelitli 2200 m, 14.VII.1998 leg. E. Yıldırım (Erzurum, EMET)

Female (Fig. 1 a-c, fig. 2): Body length 16 mm. Flagellum with 47 segments, first segment 2.1 times and the second 1.8 times as long as wide, about the twelfth square, together 0.47 times as long as the compound eyes, widest segments about 1.3 times wider than long. Temples behind the eyes roundly narrowed. Ocelli rather small, distance of lateral ocellus to compound eye about 1.0 times as long as its diameter. Malar space 0.25 times as long as the width of mandibular base. Mesosoma with scattered brownish hairs. Scutellum with lateral carinae in the basal 0.3, area superomedia halfmoon-like, about as long as wide, costulae distinct, behind the middle auf area superomedia. Coxa II with very scattered punctures, coxa III with very scattered punctures in the apical half, without scopa. Femur III with very scattered punctures in the lower two-third, 3.8 times longer than high. Third segment of tarsi II 1.7 times longer thane wide. Postpetiole with wide lateral fields, each about 0.8 times as wide as the middle field, middle field with about 9 strong longitudinal striae. Gastrocoeli large, thyridiae transverse, each about 1.0 times wider than their interval. Tergite 2 about 0.9 times as long as wide, visible parts of ovipositor sheaths about 0.5 times as long as the tergite 7.

Colour black. Ivory are narrow frontal orbits, small markings of outer orbits, markings on vertex. Mesosoma and metasoma black, the latter with slightly bluish shine, femora III dark brown to black, tibia I yellow-brown in front. Pterostigma black, wings infusate.

Male: Body length 15 mm. Flagellum with 49 segments, first segment 2.5 times, the second 1.6 times as long as wide, together 0.53 times as long as the compound eyes, oval tyloids on segments 9 to 24, maximally about 0.7 times as long as its segment. Temples behind the eyes slightly narrowed. Mesosoma with light brownish hairs. Scutellum with lateral carinae in the basal 0.3, area superomedia heart-like, somewhat wider than long, costulae distinct, behind the middle auf area superomedia. Coxae and femora with dense punctures, femur III 4.1 times longer than high. Metatarsus I without apical tooth. Postpetiole with wide lateral fields, each about 1.0 times as wide as the middle field, middle field with about 8 longitudinal striae. Gastrocoeli large, thyridiae slightly oblique, each about 1.3 times wider than their interval. Tergite 2 about 0,95 times as long as wide.

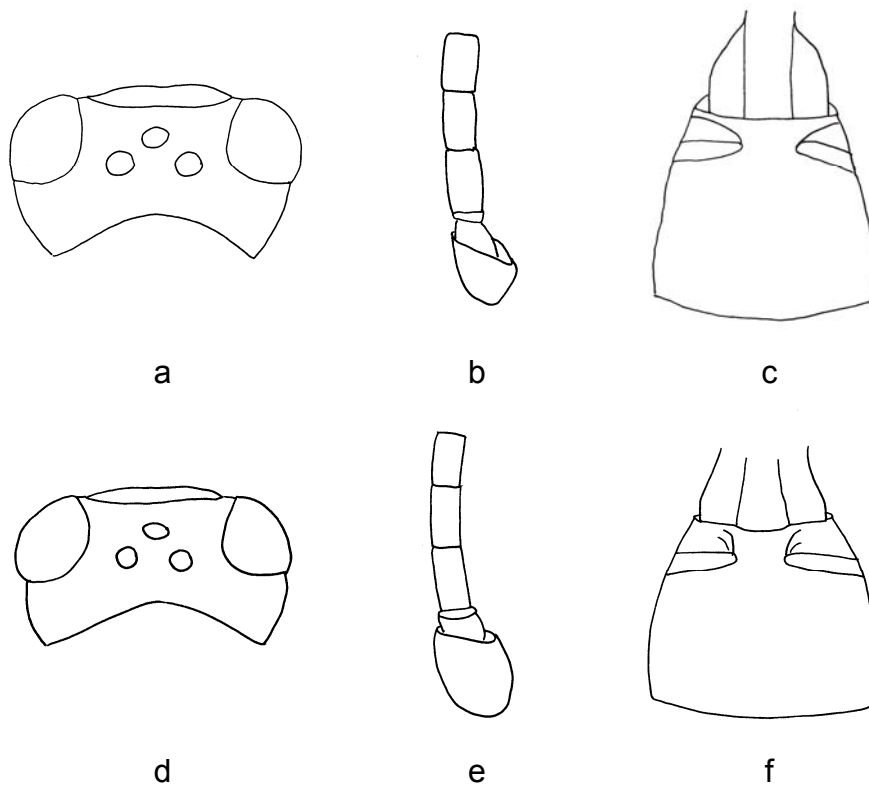


Figure 1. Head, base of flagellum, and second tergite: (a-c): *Coelichneumon problematicus* sp. nov. Riedel, Çoruh & Özbek, 2010; (d-e): *Coelichneumon nigritor* sp. nov. Riedel, Çoruh & Özbek, 2010.

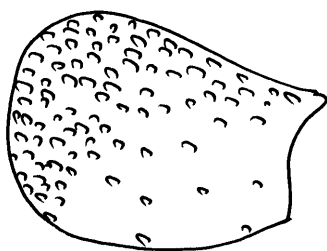


Figure 2. Coxa III of *Coelichneumon problematicus* sp. nov. Riedel, Çoruh & Özbek, 2010 (from lateral).

Colour: black. Ivory are sides of clypeus ivory, facial and frontal orbits, markings of outer orbits, spots on vertex, upper hind edges of pronotum, markings on subalar ridges. Tibiae I yellowish-brown in front yellow-brown; pterostigma black, wings strongly darkened.

Taxonomic remarks: The female differs from other *Coelichneumon*-species without scopa on coxa III by its black mesosoma and legs. In this respect, it resembles *Coelichneumon funebrator* Horstmann, but differs by the very scattered punctures on coxae II and III, black flagellum and pterostigma (coxae densely punctured, flagellum with ivory stripe, and pterostigma reddish in *C. funebrator*).

The male that we associate with the female belongs to a group of *Coelichneumon* characterized by their black legs and meso- and metasoma. The strongly infusate wings brings it close to *C. merula* (Berthoumieu), it cannot be differentiated from that species certainly.

***Ichneumon sexcinctoides* sp. nov.**

Holotypus: Female, Erzurum, Atatürk University Fields, 1850 m, 1.VII.1994, E. Yıldırım (Erzurum, EMET); Paratypes: Male, Erzurum, Palandöken 2400 m, 9.VII.1996 E. Yıldırım (Collection Riedel); male, Erzurum, Palandöken, 2400 m, 23.VII.1996, S. Çoruh (Erzurum, EMET)

Female (fig. 3 a-d): Body length 13 mm. Flagellum with more than 42 segments (tips broken off), the first segment 1.7 times, the second one 1.4 times longer than wide, the eighth about quadrate. Temples moderately narrowed behind the eyes, clypeus smooth and shining, with coarse and moderately dense punctures, area supermedia about square, costulae indistinct, coxae III with dense punctures, without scopa, femora III 3.2 times longer than high, in the lower third with scattered punctures. Gastrocoeli small with longitudineal ridges, thyridiae oblique, each about 0,5 times as wide as their interval, hypopygium about as long as the ovipositor (metasoma therefore seemingly semiamblypygous - probably hypopygium artificially exposed in the holotype!). Structure otherwise as in *Ichneumon sexcinctus*.

Colour black. Red are mandibles in center, clypeus (with black upper margin), whole face, wide orbital margins completely, transverse stripe on occiput behind the ocelli, scapi, pedicelli, basal flagellar segments (1-14), collare, mesoscutum, tegulae, upper margins of pronotum (mixed with yellow), all femora, tibiae, and tarsi. Yellow stripes on flagellar segments 7-14, upper pronotal margins in part, subalar ridges, scutellum, hind margin of postpetiole (partly reddish in the anterior part), wide apical transverse bands on tergites 2-7, and small spot on coxa III dorsally; pterostigma brownish.

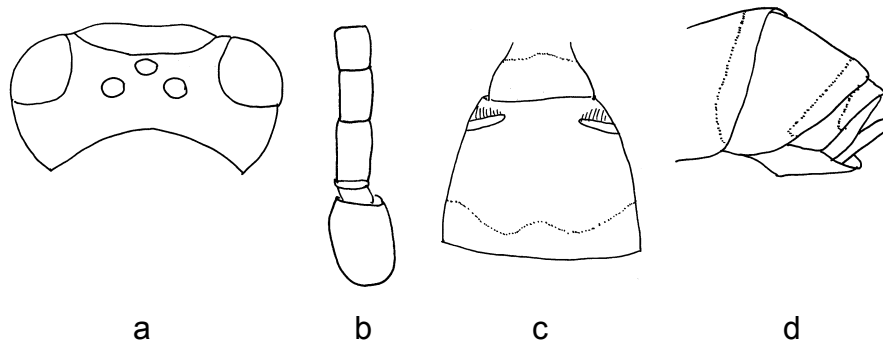


Figure 3. *Ichneumon sexcinctoides* sp. nov. Riedel, Çoruh & Özbek, 2010 female holotype: a: head (from dorsal), b: base of flagellum, c: second tergite (from dorsal), d: apex of metasoma (from lateral).

Male: Body length 14-15 mm. Flagellum with 44 segments, tyloids on segments 6-16/18, black, long oval, situated basally, maximally 0.8 times as long as the segment. Temples moderately narrowed behind the eyes, area superomedia rectangular, wider than long, costulae indistinct, coxae III with dense punctures, femora III 3.8-3.9 times longer than high. Gastrocoeli and thyridiae as in the female. Sternites 12-4 with longitudineal fold in the center, apex of hypopygium rounded, not distinctly protruding in the middle.

Colour black. Yellow are mandibles in center, clypeus, facial orbits or whole face, narrow frontal orbits in the lower half, collare, markings on upper hind edge and lower lateral margin of pronotum, tegulae, subalar ridges, scutellum, postscutellum, lateral markings on propodeum (at hind part of areae dentiparae, sometimes fused in the middle), ventral markings on coxae I and II, dorsal marking on coxa III (in one specimen), hind margins of tergites 1-6 (about 1/3-1/4 of length of tergites). Reddish are scape beneath, sometimes center of tergite 2 and two longitudineal stripes on mesoscutum. All femora, tibiae and tarsi red; hind tibia somewhat yellowish in the basal half; pterostigma brownish.

Taxonomic remarks: The species belongs to *Ichneumon* group A (Hilpert, 1992) and seems to be closest related to *Ichneumon sexcinctus* Gravenhorst, 1829. The female differs from that species by its longer basal flagellar segments (first segment only 1.3 times longer than wide in *I. sexcinctus*), the red pattern of

femur III, head, and mesosoma (lacking in *I. sexcinctus*), and the brownish pterostigma (yellowish in *I. sexcinctus*). The male can be differentiated from other species of group A by its black flagellum, brownish pterostigma, and red femora.

Özet

Türkiye'nin Ichneumoninae (Hymenoptera: Ichneumonidae) faunasına katkılar ve üç yeni türün tanınması

Bu çalışmada, Ichneumoninae faunasına ait çoğunlukla Türkiye'nin doğusundan toplanmış (toplam 390 örnek), 34 cinse ait 91 tür tespit edilmiştir. Bunlardan 12 cins ve 53 tür Türkiye faunası için yeni kayıttır. Bunlara ek olarak bilim dünyası için yeni olan *Coelichneumon nigrator* sp. nov., *Coelichneumon problematicus* sp. nov. ve *Ichneumon sexcinctoides* sp. nov. türlerinin tanınması yapılmıştır. Bu çalışma ile Türkiye'deki Ichneumoninae tür sayısı 156'ya yükselmiştir. Bilinen türler için ise yeni dağılım alanları belirlenmiştir.

Acknowledgement

The authors would like to thank following persons who kindly help in the collection of the material: Dr. Hasan YÜKSEL (decedent), Dr. Osman ECEVİT (retired), Dr. Mikat DOĞANLAR (University of Mustafa Kemal, Hatay), Dr. Hüseyin PADEM (University of Süleyman Demirel, Isparta), Dr. Erol YILDIRIM, Dr. İrfan ASLAN, Dr. Göksel TOZLU, Dr. Önder ÇALMAŞUR, Dr. Coşkun GÜÇLÜ (University of Atatürk, Erzurum), Dr. Engin KILIÇ (University of Erzincan, Erzincan), A. AYDIN, S. FIRAT, A. TÜLÜN, E. BABİLLİOĞLU, S. TOSUN (Students of Atatürk University, Erzurum), W. DOLIN and F. SCHMID (Zoologische Staatssammlung München)

References

- Aubert, J. F., 1993. Note preliminaire sur quelques *Barichneumon* Ths. tricolores. **Bulletin Societe Entomologique Mulhouse**, 37-44.
- Çoruh, S., H. Özbek & J. Kolarov, 2005. A contribution to the knowledge of Ichneumoninae (Hymenoptera) from Turkey. **Journal of the Entomological Research Society**, 7 (3): 53-57.
- Fahringer, J. & H. Friese, 1921. Eine Hymenopteren-Ausbeute aus dem Amanusgebirge (Kleinasien und Nord-Syrien, südl. Armenien). **Archiv für Naturgeschichte**, A, 87: 150-176.
- Fahringer, J., 1922. Hymenopterologische Ergebnisse einer wissenschaftlichen Studienreise nach der Türkei und Kleinasien (mit Ausschluß des Amanusgebirges). **Archiv für Naturgeschichte**, A, 88: 149-222.
- Heinrich, G., 1978. Eastern Palaearctic Ichneumoninae (in Russian). Leningrad: 1-80.
- Hilpert, H., 1992. Zur Systematik der Gattung *Ichneumon* Linnaeus, 1758 in der Westpalaearktis. **Entomofauna Suppl** 6: 1-389 OR.

- Horstmann, K., 2000. Die europäischen Arten von *Probolus* Wesmael, 1845 (Hymenoptera, Ichneumonidae). **Entomofauna**, **21**: 293-300.
- Kolarov, J., 1989. Ichneumonidae (Hymenoptera) from Balkan Peninsula and some adjacent regions. **Türkiye Entomoloji Dergisi**, **13**: 131-140.
- Kolarov, J., 1994. Nocturnal Ichneumonidae from Bulgaria and Turkey with description of a new species. **Entomofauna**, **15**: 93-97.
- Kolarov, J., 1995. A catalogue of the Turkish Ichneumonidae (Hymenoptera). **Entomofauna**, **16**: 137-188.
- Kolarov, J., A. Beyarslan & M. Yurtcan, 1997. Ichneumonidae (Hymenoptera) from the Gokceada and Bozcaada Islands - Turkey. **Acta Entomologica Bulgarica**, **3** (4): 13-16.
- Özbek, H., S. Çoruh & J. Kolarov, 2003. A contribution to the Ichneumonidae fauna of Turkey. Subfamily Ichneumoninae (Hymenoptera). **Entomofauna**, **24**: 157-163.
- Özdemir, Y., 1996. Species of ichneumonid wasps of the subfamilies Banchinae and Ichneumoninae (Hym.: Ichneumonidae) from Central Anatolia. **Bitki Koruma Bülteni**, **36**: 91-103.
- Riedel, M., 2008 a. Die *Coelichneumon*-Arten (Hymenoptera, Ichneumonidae, Ichneumoninae) des Biologiezentrums Linz, Austria. **Linzer Biologische Beiträge**, **40** (2): 1839-1859.
- Riedel, M., 2008 b. Revision der westpaläarktischen Platylabini 1. Die Gattung *Platylabus* (Wesmael, 1845). **Spixiana**, **31**: 105-172.
- Townes, H. K., S. Momoi & M. Townes, 1965. A catalogue and reclassification of the Eastern Palearctic Ichneumonidae. **Memoirs of the American Entomological Institute**, **5**: 1-661.
- Yu, D., K. Van Achterberg & K. Horstmann, 2005. World Ichneumonoidea 2004. CD-ROM, Taxapad, Vancouver.
- Yurtcan, M., A. Beyarslan & J. Kolarov, 1999. Investigations on the Ichneumonidae (Hymenoptera) fauna of Turkey. V. Diplazontinae and Ichneumoninae. **Acta Entomologica Bulgarica**, **5** (1): 34-36.