

Orijinal araştırma (Original article)

Molecular identification of root-knot nematode *Meloidogyne incognita* from kiwi fruit orchards in Ordu province, Turkey¹

Ordu ili kiwi bahçelerinde görülen kök-ur nematodu *Meloidogyne incognita*'nın moleküler teşhisi

Faruk AKYAZI^{2*}

Anıl Fırat FELEK²

Summary

Root-knot nematodes (*Meloidogyne* spp.) are one of the major groups of nematodes identified on kiwi fruit (*Actinidia deliciosa* Chev.). This investigation was conducted to identify root-knot nematodes encountered the in kiwi fruit orchards in the Ordu province of Turkey by means of Polymerase Chain Reaction (PCR). For this purpose, infected plant root samples were collected from 17 kiwi fruit orchards located in Center, Perşembe, Ünye, Gülyalı, İkizce and Ulubey districts of the province during the years 2011-2012. Females directly obtained from the infected roots of orchard populations were used for the molecular identifications. It was carried out with an identification key using ribosomal DNA (rDNA) region, Intergenic Spacer (IGS-2) region between 5S-18S genes, and the species-specific Sequence Characterized Amplified Region (SCAR) markers. All samples from the districts of Ordu province were identified as *Meloidogyne incognita* by the exact size of 502 bp amplicons by SEC1F/SEC1R scar primers. This study was the first detailed investigation both in the province and country on kiwi fruit.

Key words: *Actinidia deliciosa*, Kiwi, *Meloidogyne incognita*, rDNA, Root-knot nematodes, SCAR

Özet

Kök-ur nematodları, kiwi bitkisi (*Actinidia deliciosa*)'nde zararlı olan önemli nematod gruplarından birisidir. Bu çalışma, Ordu ili kiwi bahçelerinde görülen kök-ur nematodlarının, PCR (Polymerase Chain Reaction) yöntemi ile teşhisini gerçekleştirmek için yapılmıştır. Bu amaçla 2011-2012 yıllarında Ordu ili Merkez, Perşembe, Ünye, Gülyalı, İkizce, Ulubey ilçelerini kapsayacak şekilde 17 farklı kiwi bahçesinden bulaşık kök örnekleri toplanmıştır. Kök-ur nematodu ile enfekteli kiwi köklerinden elde edilen dişiler doğrudan teşhis için kullanılmıştır. Moleküler teşhisler, teşhis anahtarı kapsamında sunulan 5S-18S genleri arasındaki rDNA bölgesi IGS-2 için kullanılan primerler ve türe özgü SCAR primerlerinin kullanılması suretiyle gerçekleştirilmiştir. Ordu ili kiwi bahçelerinden elde edilen bütün örneklerin teşhisi sonucunda tespit edilen tür *Meloidogyne incognita* olmuş ve SEC1F/SEC1R türe özgü primerleri 502 bp değerinde amplicon vermiştir. Bu çalışma, kiwi bitkisi üzerinde ilk detaylı çalışma niteliğindedir.

Anahtar sözcükler: *Actinidia deliciosa*, Kiwi, *Meloidogyne incognita*, rDNA, Root-knot nematodes, SCAR

¹ This research is a part of Msc thesis the second author at Plant Protection Department of Ordu University, Turkey

² Department of Plant Protection, Faculty of Agriculture, Ordu University, 52200 Ordu, Turkey

* Sorumlu yazar (Corresponding author) e-mail: farukakyazi@hotmail.com

Alınış (Received): 03.07.2013

Kabul ediliş (Accepted): 26.09.2013

Introduction

Kiwi fruit (*Actinidia deliciosa* A. Chev.) has become one of the popular perennial horticultural plant species in Turkey where it is a relatively new commercial fruit crop. Recently, It has also become very popular in the Ordu area of the Black Sea Region of Turkey. The attempts to introduce it as an alternative crop to hazelnut have been supported government's subsidization programme in the region. On the other hand, kiwi fruit production is an important and profitable element of pomology in other countries such as: China, Italy, New Zealand, Chile, Greece, France, USA, Iran, Japan and Portugal (ZhengWhang *et al.*, 2009). The Turkish kiwi fruit production in 2011 was 29,321 tons, out of which the Ordu province produced 5,951 tons, i.e. 20.4% of the total production (Anonymous, 2013).

Kiwi fruit is susceptible to several pests including insects, mites and nematodes (Tomkins 1996; Steven *et al.*, 1997; El-Borai & Duncan 2005; Hill *et al.*, 2008; McKenna *et al.*, 2009). As for the plant-parasitic nematodes, the root-knot nematodes (*Meloidogyne* spp.) are the one major groups found on kiwi fruit. The important root-knot nematode species of kiwi fruit are *Meloidogyne incognita*, *M. javanica*, *M. arenaria*, *M. hapla* and *M. ethiopica* (Carneiro *et al.*, 2004; Ma *et al.*, 2007; Ploetz, 2011). They are considered as an economically important, polyphagous group of highly adapted obligate plant parasites. They are distributed worldwide and, reportedly, parasitize nearly every species of higher plant (Moens *et al.*, 2009). Four species of them: *M. incognita*, *M. javanica*, *M. arenaria* and *M. hapla*, according to the literature, account for 95% of all root-knot nematode infestations in all agricultural lands. These important pathogens cause an estimated average crop loss of 5% worldwide (Hussey & Janssen, 2002). Moreover, *M. incognita* has been reported to be the most economically important species (Haygood *et al.*, 1990; Carneiro *et al.*, 2004; Ma *et al.*, 2007; Ploetz, 2011). *Meloidogyne hapla* and *M. incognita* are both widespread in kiwi orchards in Chile (Philippi *et al.*, 1996). This species was also reported as widespread on kiwi fruit in the eastern US (Haygood *et al.*, 1990).

Recently, a number of studies have been conducted on root-knot nematodes in Turkey. However, so far, a comprehensive study has not been done on the identification of the root-knot nematodes on kiwi fruit in the country. There were few literature records about plant parasitic nematodes on kiwi fruit in the Turkey. *Pratylenchoides bacilliformis* Sher, 1970 and *P. camachoi* Barcina, Castillo and Pais, 1990 were reported by Kepenekci & Öztürk (1999) and Kepenekci & Öztürk (2000) on *Actinidia deliciosa* cv. Hayward in the Black Sea region. Despite all this information, relatively little attention regarding horticultural practices has been paid to this problem.

Therefore, the main goal of this study was to identify root-knot nematodes (*Meloidogyne* spp.) collected from different kiwi fruit orchards in the Ordu province of Turkey by using molecular methods, including species-specific primers.

Material and Methods

Nematode sampling

Kiwi fruit root samples were collected from 17 kiwi fruit orchards located (Table 1) in the Center, Perşembe, Ünye, Gülyalı, İkizce and Ulubey districts of Ordu city in the years 2011-2012. To carry out the root sampling for identification of females, a total of 5-10 kiwi fruit vines from each orchard were selected and sampled by cutting roots from four sides of the trunk of each vine. Then, the infected roots and soil were put into polythene bags, labeled and brought to the laboratory of the Plant Protection Department, Agricultural Faculty, Ordu University, for identification of root-knot nematode species.

Table 1. The sampled districts of Ordu province and the coordinates of the locations

District	Code	Location	Coordinates (latitude - longitude)
Merkez	M1	Emen	40° 92'191 N - 38° 00'119 E
Merkez	M2	Emen	40° 92'730 N - 38° 00'305 E
Merkez	M3	Şenocak	40° 87'615 N - 37° 94'831 E
Merkez	M4	Kayabaşı	40° 57'422 N - 37° 56'252 E
Merkez	M5	Kayabaşı	40° 56'580 N - 37° 56'122 E
Perşembe	P-1	Merkez	41° 04'363 N - 37° 45'988 E
Gülyalı	G-1	Turnasuyu	40° 95'474 N - 38° 00'221 E
Gülyalı	G-2	Turnasuyu	40° 95'496 N - 38° 00'298 E
Gülyalı	G-3	Turnasuyu	40° 95'877 N - 38° 00'037 E
İkizce	İ-1	Merkez	41° 05'835 N - 37° 07'982 E
İkizce	İ-2	Merkez	41° 06'337 N - 37° 08'913 E
İkizce	İ-3	Düzpelit Mah.	41° 05'907 N - 37° 08'841 E
Ulubey	U-1	Kömürocağı Mah.	40° 81'732 N - 37° 78'897 E
Ulubey	U-2	Sokak Mah.	40° 82'212 N - 37° 80'307 E
Ulubey	U-3	Dölbentli Mah.	40° 83'427 N - 37° 81'189 E
Ünye	Ü-1	T. İlçe deneme bahçesi	41° 10'429 N - 37° 38'427 E
Ünye	Ü-2	Ataköy	

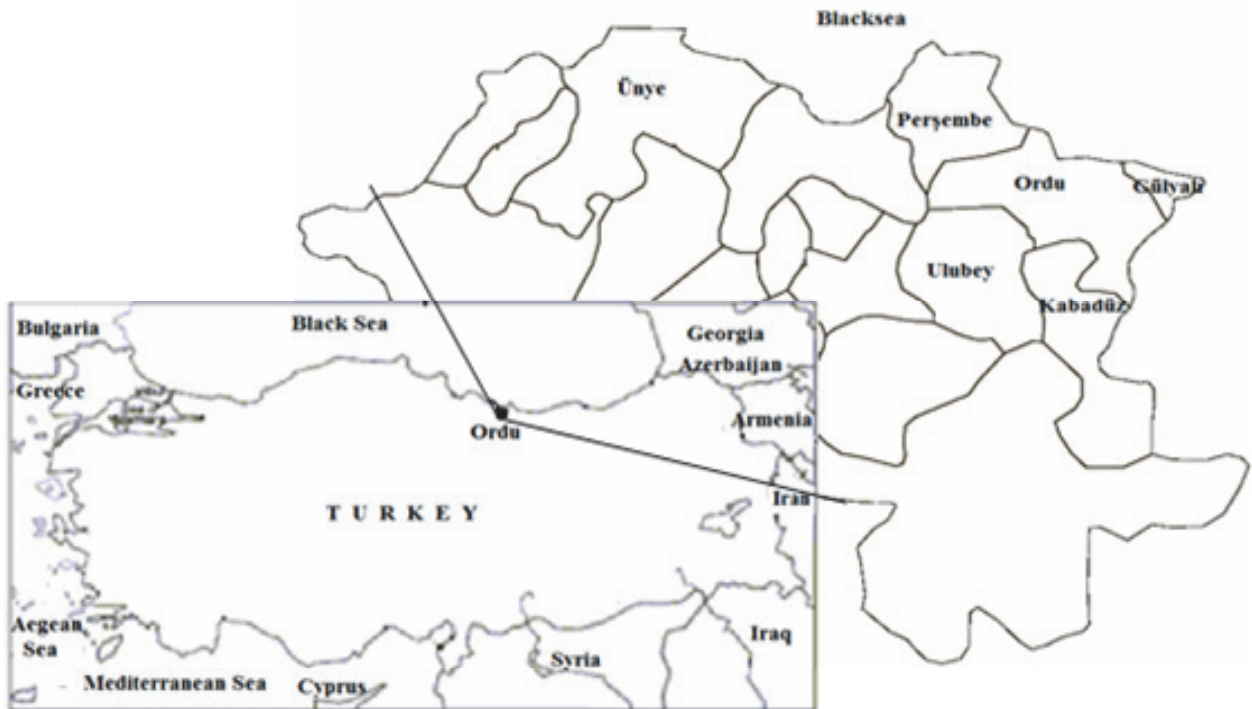


Figure 1. Map of Turkey showing sampled districts of Ordu province.

Extraction of females

Meloidogyne incognita females were dissected from infected kiwi fruit roots using a nematode needle under a stereomicroscope (Leica, S8APO) at 40x magnification.

Extraction of DNA

Nematode DNA was extracted from a single female using a DNeasy Blood & Tissue kit (Qiagen, Maryland, USA). The final volume extracted from each sample was 50 µl in AE buffer. DNA samples in 50 µl in AE buffer were separately kept -20 °C until identification.

Molecular analyses

Molecular analyses were followed by the RKN Molecular Diagnostic Key (Table 2) (Adam *et al.*, 2007). All primers used in our investigation were selected from recommended citations of Adam *et al.* (2007) and Devran & Söğüt (2009). Two pairs of primers were used to carry out PCR assays to specifically identify *M. incognita*. Primers used in this study are listed in Table 3. Primers 194 and 195 were used to amplify the IGS-2 (5S-18S) region of the ribosomal DNA (Blok *et al.*, 1997). For reactions of the species-specific primers SEC1F and SEC1R were used to obtain species specific primer amplicons (Tesarova *et al.*, 2003).

IGS and species-specific SCAR amplicons were obtained by using a total of 20 µl of PCR reaction mixture with 10 units of PCR Master Mix kit (APEX), 0.5 µl of 10 pM primers, 4 µl of PCR water (Sigma, St. Louis, MO, USA), and 5 µl of genomic DNA. The PCR amplification conditions of primers are described in Table 4. Amplification products were separated by electrophoresis in 1.8 % Tris borate buffer agarose gel under 120 V for 30 minutes. Products were visualized with UV illumination after ethidium bromide staining (Sambrook *et al.*, 1989).

Table 2. Steps to identify the root-knot nematode *Meloidogyne incognita* (modified from Adam *et al.*, 2007)

1. Amplify the IGS2 between 5S and 18S ribosomal genes using 194/195 primers	
a. 720-bp.....	Tropical species..... Go to (2)
2. Tropical RKN specific SCAR Primers	
2.1. SEC-1F and SEC-1R primers	
502-bp.....	<i>M. incognita</i>

Table 3. Primers used for molecular identification of root-knot nematode *Meloidogyne incognita*

Locus	Name of Primer	Species	Fragment (bp)	Primer sequences (5'-3')	References
IGS-2	194	<i>M. incognita</i>	720	TTAACTTGCCAGATCGGACG	Blok <i>et al.</i> , 1997
	195	<i>M. arenaria</i> <i>M. javanica</i>		TCTAATGAGCCGTACGC	
	SEC1F	<i>M. incognita</i>	502	GGGCAAGTAAGGATGCTCTG	Tesarova <i>et al.</i> , 2003
	SEC1R			CGTGGCTATGAAAGAGGTGC	

Table 4 . PCR amplification conditions of primers used to identify *Meloidogyne incognita* (Adam *et al.*, 2007; Devran & Söğüt, 2009)

Name of Primer	Amplification Conditions		
194/195	94 °C	3 min.	
	94 °C	30 secs	
	58 °C	30 secs	35 cycles
	72 °C	90 secs	
	72 °C	5 min	
SEC1F/SEC1R	94 °C	3 min.	
	94 °C	30 secs	
	54 °C	30 secs	45 cycles
	72 °C	90 secs	
	72 °C	5 min	

Results and Discussion

In this investigation, gene specific and SCAR primers were used for identification of the root-knot nematode *M. incognita*. Orchard populations were used directly for identification. In total, 17 *Meloidogyne* populations on kiwi fruit were determined. An SEC1F/SEC1R primer set produced a 502 bp amplicon. The species specific SCAR primers Fjav/Rjav for *M. javanica* and Far/Rar for *M. arenaria* did not provide any PCR amplification products. Two different primer sets were used for diagnosis of *M. incognita* (Table 3). Firstly, PCR reaction for the IGS-2 region to provide different size amplicons for different RKN species was performed. For this purpose, amplicons of the IGS-2 region between 5S-18S genes of the rDNA were obtained by using the primers 194/195. The amplification results with 194/195 for all populations were only 720 bp amplicon size, which is expected for the common species *M. javanica*, *M. incognita* and *M. arenaria*, and consistent with Adam *et al.* (2007) and Wishard *et al.*, (2002). After getting amplicons of IGS-2 for the populations, the band size 720 bp of the IGS-2 indicated the second step in the key to use species specific SCAR primers (Figure 2). The results of additional PCR reactions with species specific SCAR primers showed that the unknown *Meloidogyne* species populations from Ordu province were only *M. incognita* by the exact size of 502 bp amplicons by SEC1F/SEC1R primers (Figure 2). In this study, 502 bp amplicon size concurred with the results of Tesarova *et al.*, (2003) and Devran & Söğüt (2009).

Identification of *Meloidogyne* species is important to design effective nematode management practices such as crop rotation and plant resistance (Hussey, 1990; Cenis, 1993; Zijlstra *et al.*, 2000; Zijlstra & Van Hoof, 2006). Molecular techniques for identification of *Meloidogyne* species using DNA are being developed using polymerase chain reaction (PCR) technology, which allows analysis on a single nematode (Hussey & Janssen, 2002). In order to identify the most common and important *Meloidogyne* species, *M. arenaria*, *M. incognita*, *M. hapla* and *M. javanica*, the RKN molecular diagnostic key of Adam *et al.* (2007) was employed step by step. These results showed that the unknown nematode populations were only *M. incognita*. *Meloidogyne incognita* is the most common root-knot nematode species according to the sampling results of the international *Meloidogyne* project (Taylor *et al.*, 1982). Investigations at different times and in different countries also showed that *M. incognita* is the most encountered species (Khan & Ahmad, 2000; Guzman-Plazola *et al.*, 2006; Anwar & McKenry, 2010; Kayani *et al.*, 2013).

Results of this investigation suggest that only *M. incognita* occurs in the kiwi fruit orchards in the Ordu. However, several *Meloidogyne* species such as *M. incognita*, *M. javanica*, *M. arenaria*, *M. hapla* and *M. ethiopica* (Carneiro *et al.*, 2004; Ma *et al.*, 2007; Ploetz, 2011) were reported to attack worldwide. The original research in different regions of Turkey showed that *M. incognita* was the most common species on various cultivated plants in the country (Elekçioğlu & Uygun, 1994; Elekçioğlu *et al.*, 1994; Mennan & Ecevit, 1996; Kaşkavalcı & Öncüer, 1999; Söğüt & Elekçioğlu, 2000, Örümlü, 2003; Katı, 2006; Özarslandan, 2009). In addition to these results, the detailed investigation by Yüksel (1974) revealed that the Black Sea, Marmara, Aegean and Mediterranean Regions in Turkey have *M. incognita* as the most common species on cultivated plants. Especially, the annual and perennial agricultural plants grown in the eastern part of Samsun Province in Black Sea region were pointed out as the plants damaged by only *M. incognita*, according to the results of Yüksel (1974). It is therefore clear that *M. incognita* is a widespread species adapted to different ecological conditions worldwide.

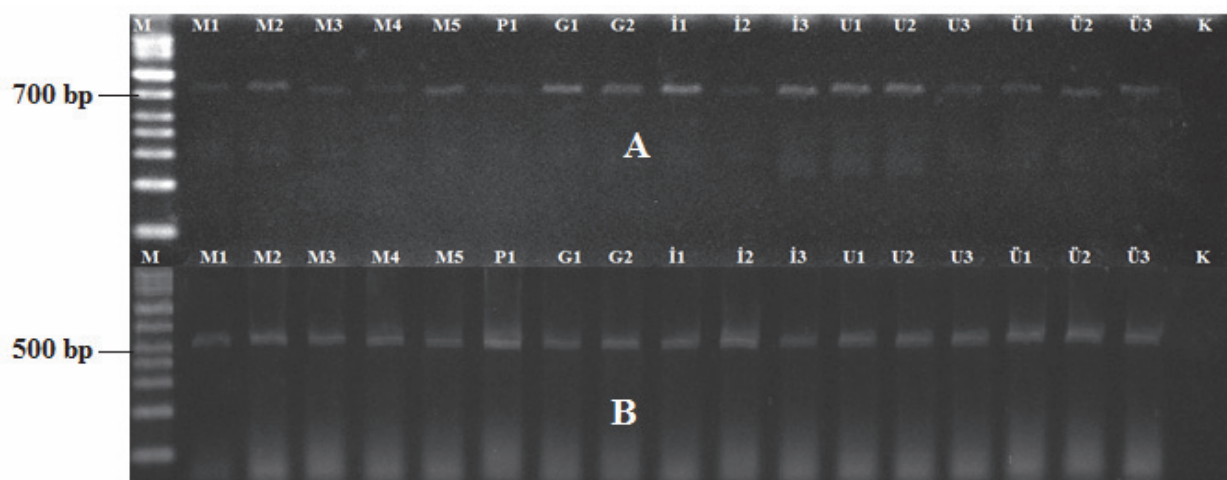


Figure 2. Amplification products of M1-Ü3 orchards. Each well contains only a single female's DNA performed with PCR.

A: Amplicons of IGS-2 (720 bp) region between 5S-18S rDNA with 194/195 primers.

B: Amplicons of *Meloidogyne incognita* species-specific SEC1F/SEC1R primers (502 bp).

M: Marker (Qiagen (1kb+).

K: Water.

Acknowledgements

This research was partly funded by a scholarship of the Council of Higher Education of Turkey and Ordu University (The Scientific and Research Council of Ordu University; Project No:TF-1207). Special thanks go to Assistant Prof. Dr. Tesfamariam Mekete Mengistu at the Entomology and Nematology Department of the University of Florida, USA and Assistant Prof. Dr. Zeynep KOLÖREN at the Biology Department of Ordu University in Turkey who both provided laboratory facilities for the identification process.

References

- Adam, M. A. M., M. S., Phillips & V.C., Blok, 2007. Molecular diagnostic key for identification of single juveniles of seven common and economically important species of root-knot nematode (*Meloidogyne* spp.). *Plant Pathology*, 56: 190-197.
- Anonymous, 2013. Turkish Statistical Institute. <http://rapor.tuik.gov.tr>. (Date accessed 29.03.2013)
- Anwar, S. A. & M. V., McKenry, 2010. Incidence and reproduction of *Meloidogyne incognita* on vegetable crop genotypes. *Pakistan Journal of Zoology*, 42: 135-141.
- Blok, V. C., M. S., Phillips & M., Fargette, 1997. Comparison of sequences from the ribosomal DNA intergenic region of *Meloidogyne mayaguensis* and other major tropical root-knot nematodes. *Journal of Nematology* 29: 16-22.

- Carneiro, R. M. D. G., Randig, O., M. R. A., Almeida & A. C. M. M., Gomes, 2004. Additional information on *Meloidogyne ethiopica* whitehead, 1968 (Tylenchida: Meloidogynidae), a root-knot nematode parasitising kiwi fruit and grape-vine from Brazil and Chilei. *Nematology*, 6: 109–123.
- Cenis, J. L. 1993. Identification of four major *Meloidogyne* spp. by random amplified polymorphic DNA (RAPDPCR). *Phytopathology*, 83: 76-78.
- Devran, Z. & M. A., Söğüt, 2009. Distribution and identification of root-knot nematodes from Turkey. *Journal of Nematology*, 41: 128-133.
- El-Borai, F. E. & L. W., Duncan 2005. Nematode Parasites of Subtropical and Tropical Fruit Tree Crops: Plant Parasitic Nematodes in Subtropical and Tropical Agriculture, 2nd Edition, Ed: Luc, M., Sikora, R.A., Bridge, J., CABI Publishing, UK, pp: 46-492.
- Elekçioğlu, I. H., & N., Uygun, 1994. Occurrence and distribution of plant-parasitic nematodes in cash crop in Eastern Mediterranean region of Turkey. *Proceeding of 9th Congress of The Mediterranean Phytopathological Union, Kuşadası -Turkey* 409–410.
- Elekçioğlu, I. H., B., Ohnesorge, G., Lung, & N., Uygun, 1994. Plant parasitic nematodes in the Mediterranean region of Turkey. *Nematologia Mediterranea* 22:59–63.
- Guzman-Plazola, R. A., J. D. J., Navas, E., Caswell-Chen, E., Zavaleta-Mejía & I. C., del Prado-Vera, 2006. Spatial distribution of *Meloidogyne* species and races in the tomato (*Lycopersicon esculentum* mill.) producing region of morelos, Mexico. *Nematologica*, 36: 215-229.
- Haygood R. A., J. A., Saunders & R. W., Miller, 1990. Widespread occurrence of *Meloidogyne incognita* on kiwifruit in the coastal areas of South Carolina. *Plant Disease* 74. pp:81. Disease Note.
http://www.apsnet.org/publications/PlantDisease/BackIssues/Documents/1990Abstracts/PD_74_81F.htm.
- Hill, M. G., N. A., Mauchline & K. A., Stannard, 2008. Predicting armoured scale insect (Homoptera: Diaspididae) phenology on kiwifruit (*Actinidia* sp.). *New Zealand Journal of Crop and Horticultural Science*, 36: 253-262.
- Hussey R. S., 1990. Biochemical and molecular methods of identifying *Meloidogyne* species: Symposium introduction. *Journal of Nematology*, 22: 8-9.
- Hussey, R. S., & G. J. W. Janssen, 2002. "Root-Knot Nematodes: *Meloidogyne* Species, 43-70". In: *Plant Resistance to Parasitic Nematodes* (Eds: J.L. Starr, R. Cook & J. Bridge). CABI publishing, Printed and bound in the UK by Biddles Ltd, 258 pp.
- Kaşkavalcı, G. & C. Öncüer, 1999. Aydın İli'nin yazlık sebze yetiştirilen önemli bölgelerinde bulunan *Meloidogyne* Goeldi, 1887 (Tylenchida: Meloidogynidae) türlerinin yayılışları ve ekonomik önemleri üzerinde araştırmalar. *Türkiye Entomoloji Dergisi*, 23(2): 149-160.
- Kepenekci, I. & G. Öztürk 1999. New species nematoda fauna of the Turkey belonging to *Scutylenchus* (Dolichodoroidea: Tylenchida) genus. *Plant Protection Bulletin*, 39: 23-33.
- Kepenekci, I. & G. Öztürk 2000. Two new species belonging to *Pratylenchoides* Winslow, 1958 (Nematoda: Pratylenchidae) genus for the Nematoda fauna of Turkey. *Turkish Journal of Entomology*, 24: 125-132.
- Katı, T., 2006. Research on Distribution and Infestation Ratio with Species and Race Determination of Root-Knot Nematodes (Nematoda: Meloidogynidae: *Meloidogyne* spp.) of Greenhouses in Bafra and Çarşamba Province in Samsun. *Ondokuz Mayıs University, Msc thesis, Department of Plant Protection, Samsun*. 71 pp.
- Kayani, M. Z., T., Mukhtar, M. A., Hussain & Ul-Haque, M. I. 2013. Infestation assessment of root-knot nematodes (*Meloidogyne* spp.) associated with cucumber in the pothowar region of Pakistan. *Crop Protection* 47: 49-54.
- Khan, H., & R., Ahmad, 2000. Geographical distribution and frequency of occurrence of root-knot nematodes in Punjab–Pakistan. *International Journal of Agriculture and Biology*, 2: 354-355.
- Ma, K. C., Y. S., Jo, B. H., Kim & D. G., Lim, 2007. Seasonal occurrence and aspects of root-knot nematodes in major kiwifruit cultivation areas of Korea. 753: VI International Symposium on Kiwifruit, Rotorua (New Zealand). *Acta Horticulturae (ISHS)* 753:719-724.
- Mennan, S. & O. Ecevit, 1996. Studies on biology, distribution and the ratio of infestation of root-knot nematodes (*Meloidogyne* spp.) in summer vegetable growing area in Bafra and Çarşamba plains. *Proceedings of the Third Turkish National Congress of Entomology* 700–705.

- Mckenna, C. E., S. J., Dobson & J. M., Phare, 2009. The insect pest complex of *Actinidia arguta* kiwifruit, New Zealand, Plant Protection 62: 262-267.
- Moens, M., R. N. & Perry, J. L., Starr, 2009. "Meloidogyne species a Diverse Group of Novel and Important Plant Parasites" pp: 1-17. In: Root Knot Nematodes (Eds: R. N., Perry, M., Moens, J. L., Starr, MPG Books Group, UK. 488 pp.
- Örümlü, A. E., 2003. Investigations on the nematological problems of fruit nurseries in Bademli (Ödemiş-Izmir) district. Phd thesis, Ege University, Graduate school of natural and applied sciences, Izmir. Pp. 69.
- Özarslandan, A., 2009. Identification of *Meloidogyne* Species Collected From Different Parts of Turkey and Determination of Virulence of Some Root-Knot (*Meloidogyne* spp.) Populations. Phd Thesis, University of Çukurova, Institute of Natural applied sciences, Adana. 84 pp.
- Philippi, I., B. A., Latorre, G. F., Perez & L. Castillo, 1996. Identification of the root-knot nematodes (*Meloidogyne* spp.) on kiwifruit by isoenzyme analysis in Chile. Fitopatologia 31, 96–101.
- Ploetz, R. C. 2011. Tropical Fruit Crops and the diseases that affect their production. Tropical Biology and Conservation Management, Vol:III. (<http://www.eolss.net/ebooks/Sample%20Chapters/C20/E6-142-TA-05.pdf> (Date accessed 25.01.2012).
- Söğüt, M. A. & I. H., Elekçioğlu, 2000. Determination of *Meloidogyne* spp. Goeldi, 1892 (Nemata: Heteroderidae) species races found in vegetable growing areas of the Mediterranean region of Turkey. Turkish Journal of Entomology 24:33–40.
- Steven, D., Valenzuela, L. & R. H., Gonzalez, 1997. Kiwifruit pests in chile. III International Symposium on Kiwifruit, Thessaloniki (Greece). Acta Horticulturae, (ISHS) 444: 773-778.
- Taylor, A. L., J. N., Sasser, & L. A., Nelson, 1982. Relationship of Climate and Soil Characteristics to Geographical Distribution of *Meloidogyne* Specis in Agricultural Soils. International *Meloidogyne* Project. Cooperative Publication of The Department of Plant Pathology, North Carolina State University and the United States Agency For International Development. Designed and Printed by North Carolina State University Graphics Raleigh, North Carolina 27650 United States of America, 65 pp.
- Tesarova, B., M., Zouhar & P., Rysanek, 2003. Development of PCR for specific determination of root-knot nematode *Meloidogyne incognita*. Plant Protection Science, 39: 23–28.
- Tomkins, A. R., 1996. Pest control on kiwifruit with an insecticidal soap. New Zealand Plant Protection Society, Proc. 49th N.Z. Plant Protection Conference, Nelson, New Zealand, 49: 6-11.
- Wishart, J., M. S. Phillips & V. C., Blok, 2002. Ribosomal intergenic spacer: A polymerase chain reaction diagnostic for *Meloidogyne chitwoodi*, *M. fallax*, and *M. hapla*. Phytopathology, 92: 884-892.
- Yüksel, H., 1974. Kök-ur nematodlarının (*Meloidogyne* spp) Türkiye'deki durumu ve bunların populasyon problemleri üzerinde düşünceler. Atatürk Üniversitesi Ziraat Fakültesi Dergisi, 5: 83-105.
- Zijlstra, C., D. T. H. M., Donkers-venne & M., Fargette, 2000. Identification of *Meloidogyne incognita*, *M. javanica* and *M. arenaria* using sequence characterised amplified region (SCAR) based PCR assays. Nematology, 2: 847-853.
- Zijlstra C. & R. A., Van Hoof, 2006. A multiplex real time polymerase chain reaction (TaqMan) assay for the simultaneous detection of *Meloidogyne chitwoodi* and *M. fallax*. Phytopathology, 96: 1255-1262.
- ZhengWang, J., H., HongWen, Z., CaiHong, Z., ZhongHui & W., ShengMei, 2009. The development of the chinese kiwifruit industry. IX Convegno Nazionale dell'Actinidia, Viterbo-Latina, Italia, 6-8 Ottobre 2009. Italus Hortus, 16: 245-251.