

**Case Report / Olgu Sunusu**

**A Case of Prolonged Asystole During Head-up Tilt Testing**

**Title in Turkish is absent !!!!**

Orhan Dogdu<sup>1</sup>, Mehmet Tugrul Inanc<sup>2</sup>, Mikail Yarlioglu<sup>2</sup>, Mehmet Gungor Kaya<sup>2</sup>

<sup>1</sup> Yozgat State Hospital,  
Yozgat, TURKEY

<sup>2</sup>Erciyes University School  
of Medicine, Department of  
Cardiology, Kayseri,  
TURKEY

**ÖZET**

Tilt testi nörokardiyojenik senkoplu hastalarda kullanılan bir yöntemdir. 31 yaşında kadın hasta, son iki aydır bulantı ve terlemeyi takiben ortaya çıkan üç senkop atağı nedeniyle kardiyolojik açıdan incelendi. Hastanın elektrokardiyografi ve ekokardiyografi de dahil tüm sistem incelemeleri normal bulundu. Bunun üzerine, hastaya eğimi 60 dereceye ayarlanan tilt testi uygulandı. Testin yaklaşık 8. dakikasında hastada bradikardi ve asistolün eşlik ettiği senkop gelişti. Hipotansiyonla birlikte 20 saniye süren ventriküler asistol ve bilinç kaybı görülmesi üzerine hasta sırtüstü pozisyonda yatırıldı ve kalp mesajına başlandı. Yaklaşık 20 saniye sonra hasta yavaş yavaş sinüs ritmine döndü ve ardından bilinci yerine geldi. Tedavi olarak hastaya iki odacıklı kalp pili takıldı. Bir yıllık izlemi içinde hastanın semptomlarında herhangi bir tekrarlamaya olmadı

**Anahtar Kelimeler:** Tilt testi, vazovagal senkop, asistoli

**ABSTRACT**

Head-up tilt test is used for evaluating patients with neurocardiogenic syncope (NCS) and syncope of unknown etiology. A 31-year-old woman was examined for three syncopal episodes during the past two months, all of which preceded by nausea and sweating. Examinations including electrocardiography and echocardiography showed normal findings. A head-up tilt table testing was performed at an angle of 60 degrees. At about 8 minutes, syncope associated with bradycardia and asystole was observed. She became hypotensive, and there was a ventricular asystolic pause lasting 20 seconds, associated with loss of consciousness. She was placed in the supine position and cardiac massage was started. After 20 seconds, she slowly returned to sinus rhythm and regained consciousness. The patient was treated with dual-chamber (DDD-R) pacemaker implantation. During six months of follow-up, no major events occurred.

**Key words:** Head-up tilt test, vasovagal syncope, asystole

Corresponding Author:

Orhan DOGDU, MD

Yozgat State Hospital  
Department of Cardiology  
66100, Yozgat TURKEY  
Telephone: +90 533 504 50  
65

Fax : +90 352  
4373408

**e-mail:**

orhandogdu@yahoo.com

Başvuru Tarihi/Received :

11-03-2012

Kabul Tarihi/Accepted:

23-03-2012

### Introduction

Head-up tilt testing (HUT) is used as an in establishing for the diagnosis of neurocardiogenic syncope (NCS) and syncope of unknown etiology (1-3). The monitoring usually consist of heart rate and blood pressure measurements. Prolonged asystole is occasionally demonstrated during HUT and a subset of neutrally mediated syncope (4). The label 'malignant vasovagal syndrome' has been used some reports (4,5). The incidence of prolonged asystole during HUT is about 18% (>3 sec) and 9% (>5 sec) in patients with NCS (6,7). However, there are only a few reports describing asystole longer than 10 seconds (8-11).

We demonstrate an adult female patient with frequent episodes of syncope in whom HUT was positive for a cardioinhibitory response with a prolonged asystole of 20 seconds.

### Case Report

A 31-year-old woman was referred because of three syncopal episodes during the past two months, all of which preceded by nausea and sweating. The initial work-up including physical examination, chest X-ray, electrocardiogram (ECG), complete blood count, serum electrolytes, fasting blood sugar, thyroid function studies, echocardiography, exercise stress test, neurological consultation, and Holter-ECG monitoring showed normal findings. She was not on any medication. Carotid sinus massage performed to exclude carotid sinus hypersensitivity was normal. A head-up tilt table testing was performed (3). The patient was subjected to an HUT at an angle of 60 degrees. At about 8 minutes of the test, syncope associated with bradycardia and asystole was showed without sublingual nitroglycerin stimulation. At the beginning of the test, his heart rate was 86/min. She became bradycardic and hypotensive (70/45 mmHg), and there was a ventricular

asystolic pause lasting 20 seconds, associated with loss of consciousness. She recovered after being placed in the supine position and external cardiac massage was started. After about 20 seconds, she slowly returned to sinus rhythm and regained consciousness a few seconds later. The patient was treated with dual-chamber pacemaker (DDD-R) implantation. During six months of follow-up, no major events occurred and symptoms were controlled.

### Discussion

We describe a case of an adult female with frequent episodes of syncope, in whom HUT was positive for a cardioinhibitory response with a prolonged asystole of 20 seconds, which is not common in the literature (8-11). The incidence of prolonged asystole during HUT is about 18% (>3 sec) and 9% (>5 sec) in patients with NCS (6-7). The longest period of reported asystole during HUT is 70 seconds, which occurred with clomipramine (12).

Vasovagal syncope is considered to have a good prognosis, although less is known about patients who are severely symptomatic, whose condition has been termed "malignant"<sup>13</sup>. In a review of patients with asystole, it was demonstrated that (*first*) asystole during HUT did not necessarily imply a malignant outcome despite recurrences, (*second*) pacemaker or drug therapy did not influence outcome significantly, and (*third*) tilting protocol (angle) might influence time to and incidence of asystole during HUT (8). Milstein et al. suggested that life threatening cardiac asystole might occur in patients with the malignant form of NCS, and that this possibility should be considered when studying survivors of asystolic sudden cardiac arrest (4). In their study, all six survivors of suspected asystolic arrest with normal conventional baseline electrophysiological evaluation developed syncope during upright tilt provocation, with pauses of 16 and 20 seconds in two of them, respectively (4).

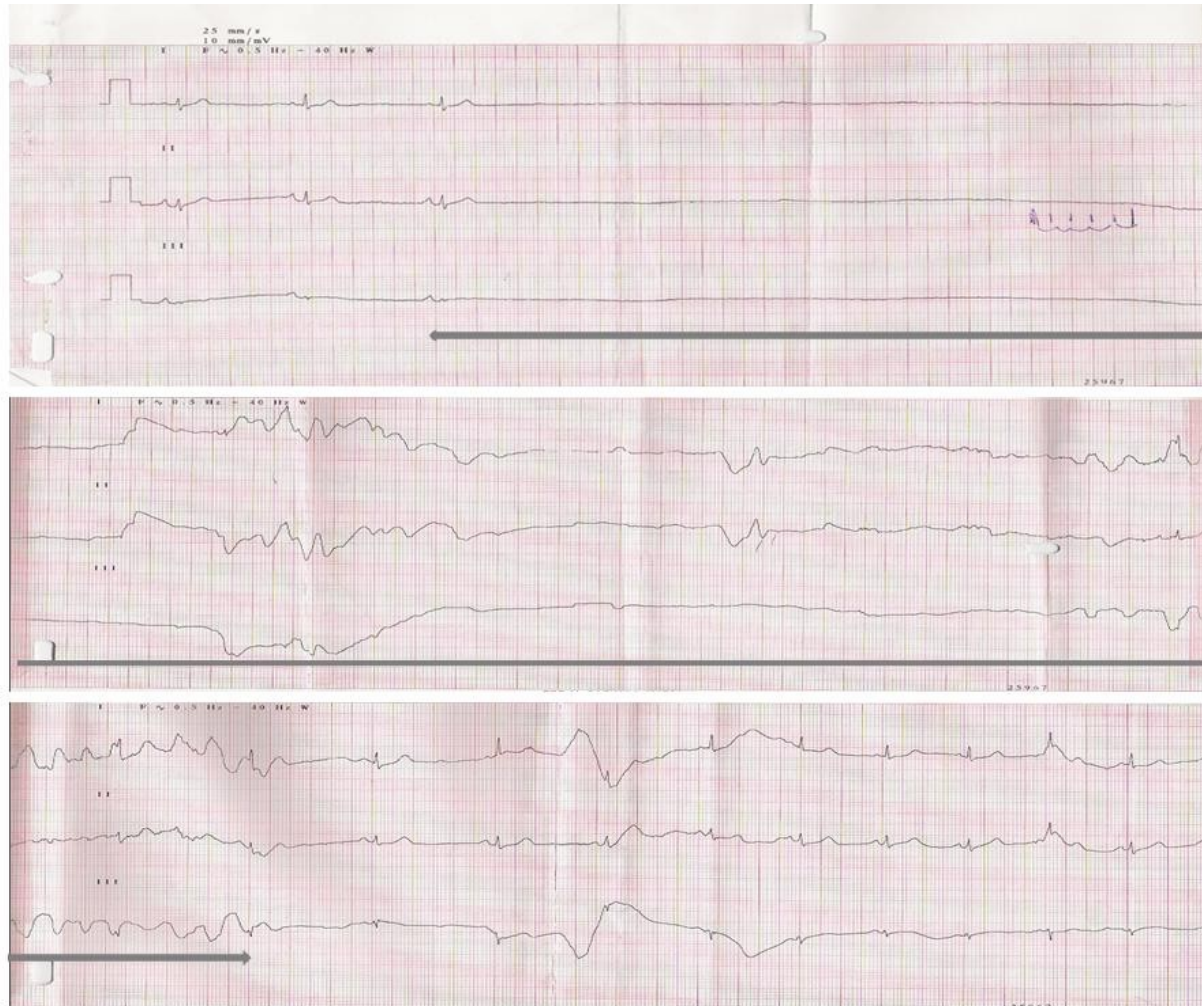


Figure1. Legend of the figure must be added !!!!!

Head-up tilt testing is performed for the evaluation of NCS. The exact pathophysiological mechanism underlying HUT-induced asystole is not completely known. If prolonged asystole occurs during HUT, as seen in our case, external cardiac massage should be initiated without any delay to preserve irreversible ischemic damage (12). Although HUT is valuable in the assessment of syncope, it should be noted that it can yield false positive results especially in healthy young adults (14).

Tilt-induced prolonged asystole has been suggested to identify a distinct subgroup of patients with neurally mediated syncope, for whom management including permanent pacemaker implantation has been recommended. Several studies demonstrated improvement in the prevention of vasovagal syncope following pacemaker implantation (15-17).

In a randomized, controlled study, pacemakers were found to be superior to beta-blocker treatment in preventing syncopal recurrences (18). In our case, treatment with dual-chamber pacemaker (DDD-R) implantation resulted in improvement and during a follow-up of six months no major events occurred.

Although HUT is a very useful in diagnosis of patients with unexplained syncope, physicians should be aware of its potential complications such as prolonged asystole.

#### References.

1. Almquist A, Goldenberg IF, and Milstein S. Provocation of bradycardia and hypotension by isoproterenol and upright posture in patients with unexplained syncope. *N Engl J Med.* 1989 Feb 9;320(6):346-51.
2. Kapoor WN. Syncope. In: Rosendorff C, ed. *Essential Cardiology: Principles and Practice.* Philadelphia, Pennsylvania: WB Saunders Co, 2001; Chapter 18: 332-44
3. Benditt DG, Ferguson DW, Grubb BP. ACC Expert Consensus Document.: Tilt table testing for assessing syncope. *J Am Coll Cardiol* 1996; 28:263-75
4. Milstein S, Buetikofer J, Lesser J, et al. Cardiac asystole: a manifestation of neurally mediated hypotension-bradycardia. *J Am Coll Cardiol* 1989;14:1626-32.

5. Grubb BP, Temesy-Armos P, Moore J. Head-upright tilt-table testing in evaluation and management of the malignant vasovagal syndrome. *Am J Cardiol.* 1992 Apr 1;69(9):904-8
6. Brignole M, Menozzi C, Gianfranchi L et al. The clinical and prognostic significance of the asystolic response during the head-up tilt test. *Eur J Cardiac Pacing Electrophysiol* 1992;2:109-13.
7. Dhala A, Natale A, Sra J. Relevance of asystole during head-up tilt testing. *Am J Cardiol* 1995;75:251-4.
8. Van Dijk N, Velzeboer SC, Destrée-Vonk A, et al. Psychological treatment of malignant vasovagal syncope due to bloodphobia. *Pacing Clin Electrophysiol* 2001;24:122-4.
9. Maloney JD, Jaeger FJ, Fouad-Tarazi FM. Malignant vasovagal syncope: prolonged asystole provoked by head-up tilt. Case report and review of diagnosis, pathophysiology, and therapy. *Cleve Clin J Med* 1988;55:542-8.
10. Barón-Esquivias G, Pedrote A, Cayuela A, et al. Long-term outcome of patients with asystole induced by head-up tilt test. *Eur Heart J* 2002;23:483-9.
11. Sucu M, Sari I, Davutoglu V. A case of prolonged asystole during head-up tilt testing. *Turk Kardiyol Dern Ars.* 2009 Jul;37(5):345-7.
12. Leftheriotis DI, Theodorakis GN, Kremastinos DT et al. Prolonged asystole during head-up tilt testing with clomipramine infusion. *Europace* 2003;5:313-5.
13. Sutton R. Vasovagal syndrome-could it be malignant? *Eur J Cardiac Pacing Electrophysiol* 1992;2:89.
14. Petersen ME, Williams TR, Gordon C, et al. The normal response to prolonged passive head up tilt testing. *Heart* 2000;84:509-14.
15. Benditt DG, Petersen M, Lurie KG, et al. Cardiac pacing for prevention of recurrent vasovagal syncope. *Ann Intern Med* 1995;122:204-9.
16. Benditt DG, Sutton R, Gammage M, et al. "Rate-drop response" cardiac pacing for vasovagal syncope. Rate-Drop Response Investigators Group. *J Interv Card Electrophysiol* 1999; 3:27-33.
17. Petersen ME, Chamberlain-Webber R, Fitzpatrick AP, et al. Permanent pacing for cardioinhibitory malignant vasovagal syndrome. *Br Heart J* 1994;71:274-81.
18. Ammirati F, Colivicchi F, Santini M, et al; Syncope Diagnosis and Treatment Study Investigators. Permanent cardiac pacing versus medical treatment for the prevention of recurrent vasovagal syncope: a multicenter, randomized, controlled trial. *Circulation* 2001;104:52-7.