



## RESEARCH ARTICLE

### Association between the Crab, *Nepinnotheres pinnotheres* (Linnaeus, 1758), and the Endangered Species Fan Mussel, *Pinna nobilis* (Linnaeus, 1758), from the Aegean Sea, Turkey

Sefa Acarlı<sup>1</sup> • Pervin Vural<sup>2</sup> • Ahmet Öktener<sup>3\*</sup>

<sup>1</sup>Çanakkale Onsekiz Mart University, Faculty of Marine Sciences and Technology, Çanakkale/Turkey

<sup>2</sup>Çanakkale Onsekiz Mart University, Bayramiç Vocational School, Department of Aquaculture, Çanakkale/Turkey

<sup>3</sup>Sheep Research Institute, Department of Fisheries, Çanakkale Street 7km, Bandırma, Balıkesir/Turkey

#### ARTICLE INFO

##### Article History:

Received: 24.05.2019

Accepted: 18.09.2019

Available Online: 26.12.2019

##### Keywords:

*Nepinnotheres*

*Pinna nobilis*

Pea crab

Endangered species

Turkey

#### ABSTRACT

*Pinna nobilis*, commonly known as the fan mussel or pen shell, is an endemic species in the Mediterranean Sea. The fan mussel population has recently been significantly endangered along the Mediterranean coast, mainly due to diseases. However, it has a critical role in the ecological system of the throughout the coasts of the Mediterranean. Therefore, it is important to investigate the interactions between *P. nobilis* and their enemies, parasites, symbiont in the ecological environment. Pea crabs are small crustacean and symbionts in a variety of invertebrates. They inhabit the mantle cavities of bivalve. The association between the pea crab, *Nepinnotheres pinnotheres* (Decapoda), and *P. nobilis* (Bivalvia) from the Aegean Sea, Turkey was examined in this study. The crab samples were collected off Urla Karantina Island, Izmir Bay, Aegean Sea. The biometric characteristics of bivalve and crab in this coexistence were analyzed. 80% of *P. nobilis* was occupied by *N. pinnotheres*. The weight of pea crabs was recorded between 0.01 g and 3.87 g.

#### Please cite this paper as follows:

Acarlı, S., Vural, P. and Öktener, A. (2019). Association between the Crab, *Nepinnotheres pinnotheres* (Linnaeus, 1758), and the Endangered Species Fan Mussel, *Pinna nobilis* (Linnaeus, 1758), from the Aegean Sea, Turkey. *Alinteri Journal of Agriculture Sciences*, 34(2): 169-174. doi: 10.28955/alinterizbd.639029

#### Introduction

Commonly known as fan mussel, pen shell, or wings shell, *Pinna nobilis* is the largest bivalve (shell length growing up to 120 cm) and a species endemic to the Mediterranean (Zavodnik et al., 1991). Fan mussel shell length usually varies between 20 and 40 cm (Fischer et al., 1987). They live at depths from 0.5 to 60 m (Zavodnik et al., 1991; Theodorou et al., 2017) and have a long life (27 years) (Galiniou-Mitsoudi et al., 2006). It is an infaunal distributed in mud, sandy mud, silt, rocks bottom, and holds on to small gravel or pieces of shells by its byssus (Tebble, 1966; Theodorou et al., 2015). Furthermore, *Posidonia oceanica* meadows can be seen intensively in the

habitats of fan mussel (García-March et al., 2006). *P. nobilis* is filter feeding organisms that feed on suspended organic matter, inorganic matter, zooplankton, phytoplankton, bacteria, and viruses from the water column (Gosling, 2003; Davenport et al., 2011). Thus, it contributes to an increase in water quality. Because of this, it has a vital role in the ecological system of the Mediterranean Sea (Natalotto et al., 2015).

The fan mussel population has recently become dramatically reduced on the Mediterranean seashore, particularly in countries such as France, Greece, Spain, Italy, and Croatia (Vicente and Moretau, 1991; Catanese et al.,

\* Corresponding author

E-mail address: ahmetoktener@yahoo.com

2018). In some regions, the population density has dropped from 17 individuals per 100 m<sup>2</sup> (Richardson et al., 1999) to 1 individual per 100 m<sup>2</sup> (Katsanevakis and Thessalou-Legaki, 2009). Nowadays, in some areas in the western Mediterranean and the Tyrrhenian Sea, Italy, 100% of deaths occurred (Catanese et al., 2018; Carella et al., 2019). Moreover, Katsanevakis et al. (2019) carried out a study about the mass mortalities of the *Pinna nobilis* in the Lesvos Island, northern Aegean Sea. They identified the occurrence of parasite *Haplosporidium pinnae* with 100% prevalence as histopathological and molecular analysis examinations. *P. nobilis* is under threat of extinction due to damage to coastal habitat, increased water pollution, the destruction caused by fishing activities, harvesting for the decorative use, the damage made by dragging anchors of recreational boats, the presence of a haplosporidian parasite in the digestive tract, and anthropological activities (Vincente and Moreteau, 1991; Ayaz et al., 2006; Hendriks et al., 2013; Deudero et al., 2015; Capó et al., 2015; Dariba, 2017). Due to these causes, *P. nobilis* has been listed as an endangered species in the Mediterranean ecosystem and has been under strict protection according to Annex II of the Barcelona Convention (SPA/BD Protocol 1995) and the European Council Directive 92/43/EEC (Annex IV). In Turkey, *P. nobilis* has been under protection since 1998 when Directorate of Food and Control, Ministry of Food Agriculture and Livestock issued a regulation, circulation No. 32/1, on Marine and Inland Commercial Fisheries.

Pea crabs live either parasitic or in commensal association with an array of marine organisms and are ubiquitous throughout the world. They inhabit the mantle cavity of bivalves (Palmer, 1995) and gastropods (Geiger and Martin, 1999), in the tubes of polychaetous worms (Grove and Woodin, 1996), in the gut cloaca, and respiratory trees of holothurians (Hamel et al., 1999), the oral surface of sea urchins, and pharyngeal cavity of tunicates (Reeves and Brooks, 2001). Pinnotherid crabs are used as a permanent shelter and often as a food source by the breeding female (Becker and Türkay, 2017).

*Nepinnotheres pinnotheres* (described as *Cancer pinnotheres* Linnaeus, 1758) is known as pinna pea crab with brown color. Carapace average length is 7 mm for male and 12 mm for female (Hayward and Ryland, 1995). This species is parasitic and found in the mantle cavity of the *P. nobilis* and also in ascidians (Becker and Türkay, 2017). It is thought that *N. pinnotheres* live in *P. nobilis* as an impermanent refuge. Therefore, more than one male is encountered in the same *P. nobilis* (Rabaoui et al., 2008).

At present, the population of *P. nobilis* is under significant threat on the Mediterranean coasts. Moreover, little information on the behavior, morphology, ecology, enemies, and diseases of *P. nobilis* is known and there is need of detailed investigations. This study examines the association between the fan mussel, *P. nobilis* and the pea crab, *N. pinnotheres*.

## Materials and Methods

This study was carried out with individuals sampled during the investigation of reproductive cycle biochemical

composition of *P. nobilis* between March 2008 and February 2009 by Acarlı et al. (2018). The materials were obtained monthly and a total of one hundred and fifteen individuals of fan mussels were examined throughout the study. The study area is shallow coastal water with a depth from 5 to 20 m. The bottom is primarily composed of muddy sand and covered with meadows (Figure 1).

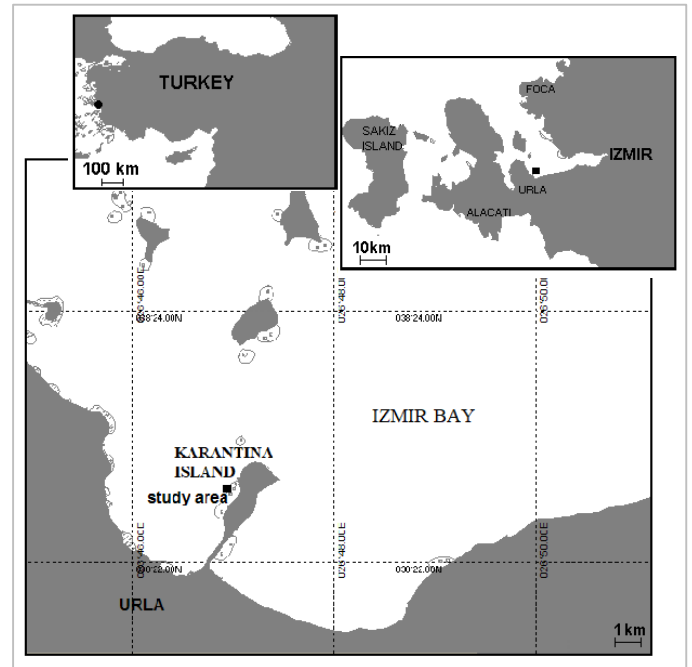


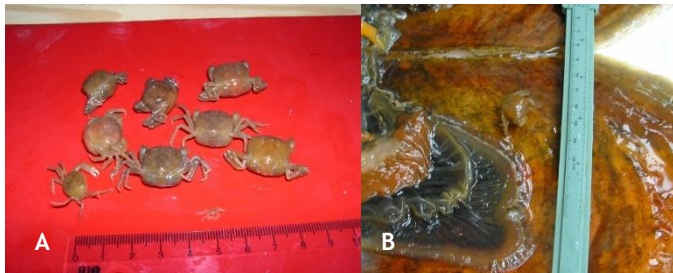
Figure 1. Map showing the study area

Fan mussels were transported to the Shellfish Laboratory of Fisheries Faculty (Ege University, Izmir, Turkey). Biofouling and other adherence were entirely removed from samples that then were for biological parameters such as shell length and total weight. Total weight and shell length were measured with a caliper and an electronic scale, respectively. Anterior and posterior adductors of *P. nobilis* were cut by a knife, and then its shells were opened. Careful examination for pea crabs was made inside fan mussels, and species were determined using the key of Silas and Alagarwami (1965). The monthly distribution of infested individuals was identified during the study period. Each pea crab was weighed during the study period. The Kolmogorov-Smirnov Test was applied to determine the normality of the data. According to the results of this test, Pearson's correlation analysis was used to assess the degree of association between host size and weight of pea crab. Data were analyzed using SPSS 13.0 for Windows.

## Results and Discussion

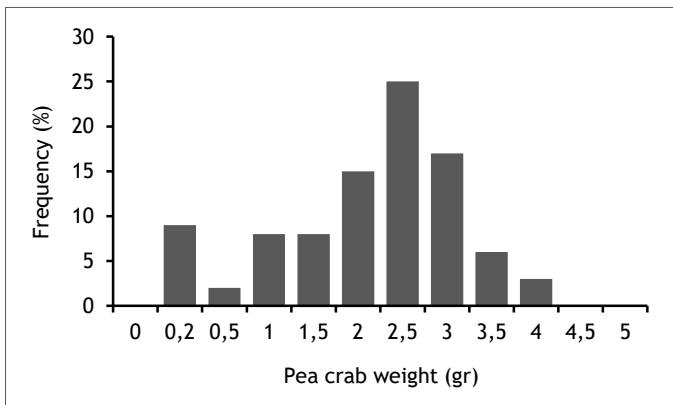
The shell length of *P. nobilis* from the Aegean Sea was recorded as 51.45 cm (min. 36.5- max. 73.5), and width as 17.36 cm (min.12.5- max.24.5). The weight and thickness were recorded as 2076.4 g (min.864.9- max.4533.9) and 6.11 cm (min.3.9- max.12), respectively.

The crab samples were found in the mantle of the fan mussel (Figure 2). A total of 93 pea crabs were found in 84 *P. nobilis* individuals. 73% of the population was infected.

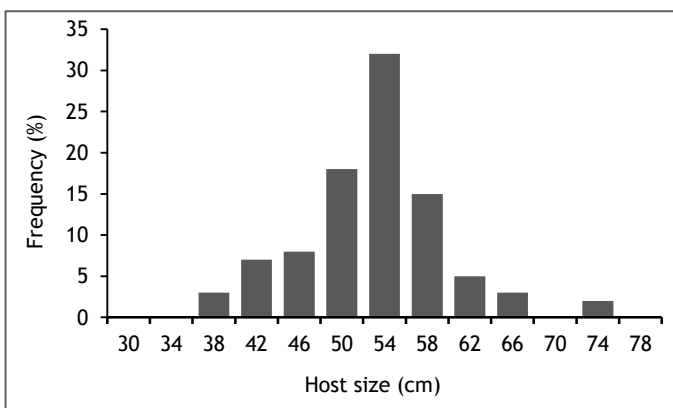


**Figure 2.** Photographs showing pea crabs (A) and pea crab on the *P. nobilis* shell (B)

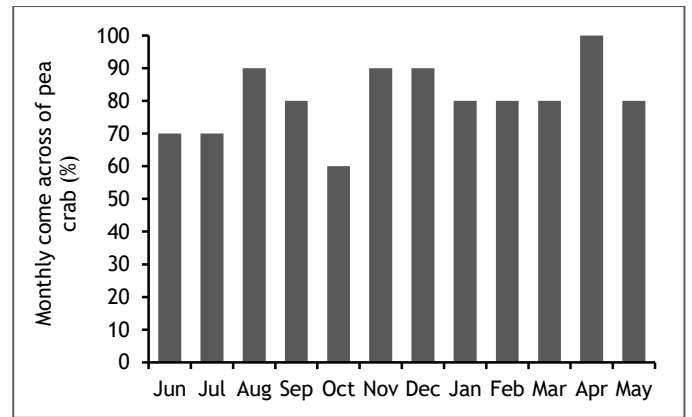
Seventy-eight fan mussels were occupied by one crab, one fan mussel by three crabs, four fan mussels by two crabs, and one fan mussel by four crabs. The weight of pea crabs was recorded as between 0.01 g and 3.87 g (Figure 3). The shell length of infested fan mussels ranged between 38 cm and 73.5 cm (Figure 4). When the association rate of *N. pinnotheres* and *P. nobilis* seasonally is examined, infested fan mussels were observed throughout the year, reaching the highest value with %100 in April. The lowest value was found to be in October with 70% infestation (Figure 5). No correlation was found between the weight of the pea crab and host size ( $P>0.05$ ) (Figure 6).



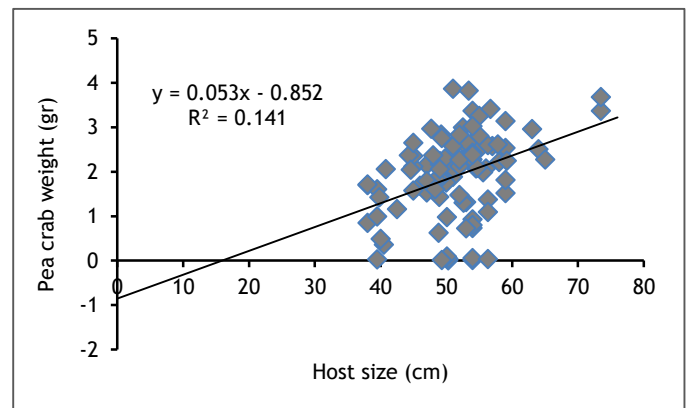
**Figure 3.** Weight frequency of pea crab, *Nepinnotheres pinnotheres*



**Figure 4.** Length frequency of infested *Pinna nobilis* population of Urla Karantina Island



**Figure 5.** Monthly variation of infested *Pinna nobilis* (%)



**Figure 6.** Relationship between infested *Pinna nobilis* (cm) and pea crab, *Nepinnotheres pinnotheres*

*N. pinnotheres* were reported especially on fan mussel *Pinna nobilis* (Rabaoui et al., 2008; Becker and Türkay, 2010; Cabanellas-Reboredo et al., 2010; Akyol and Ulaş, 2015; Trigou and Vicente, 2018), *Atrina pectinata* (Delongueville and Scaillet, 2002), *Perna canalicus*, *Mytilus edulis*, *Macra oata* (Stevens, 1990), and ascidians such as *Halocynthia papillosa*, *Microcosmus* spp. (Becker and Türkay, 2017), and *Ascidia mentula* (Lutzen, 1967; Becker and Türkay 2017).

There is no detailed study on the association between the crab, *N. pinnotheres* and *P. nobilis*. Only, Rabaoui et al. (2008) found an association of 56.7% between *N. pinnotheres* and *P. nobilis* from StahJaber. Cabanellas-Reboredo et al. (2010) identified *N. pinnotheres* in 8.3% of the fan mussel samples they examined. The association rate of *N. pinnotheres* in *P. nobilis* in the Aegean Sea is found to be higher than those reported in those studies. This difference possibly may be explained with environmental factors such as tide, flow, sediment structure, amount of nutrition, mollusk status (length of buried shell and age of mussel), or amount of fan mussel examined by researchers.

There are several studies about epibionts (Giacobbe, 2002, Cosentino and Giacobbe 2007, Rabaoui et al., 2009, Addis et al., 2009) and commensals (Richardson et al., 1997; Kennedy et al., 2001, Calafiore et al., 1991, Laganà et al., 2007; Rabaoui et al., 2008, Rada and Milat, 2009; Cabanellas-Reboredo et al., 2010, Akyol and Ulaş, 2015) of fan mussel. Acarlı et al. (2010) and Basso et al. (2015) stated that fan

mussel has a rich biodiversity that is composed of macrobenthos, epibionts, and commensal species.

Vázquez-Luis et al. (2015) examined the mass mortalities of the bivalve *P. nobilis* with mortality rates up to 100% in the Spanish Mediterranean Sea. Their histological examinations indicated that a haplosporidian-like parasite living in the digestive gland is responsible for these mortalities. Darriba (2017) reported that a parasite belonging to the haplosporidian group infected *P. nobilis* and caused mortality in Alicante (Spain, Western Mediterranean). On the Spanish coasts of the Western Mediterranean Sea, *Haplosporidium pinnae* are most likely responsible for the mass mortality of *P. nobilis* (Catanese et al., 2018). In Campania and Sicily, large scale mortality of *P. nobilis* population was noticed pen shells of all sizes because of mycobacterial diseases (Carella et al., 2019).

Trottier (2012) indicated that pea crab *Nepinnotheres novaezelandiae* (Filhol, 1885) caused a significant loss of production on aquaculture in New Zealand green-lipped mussels, *Perna canaliculus*. Pea crabs lead to a variety of negative effects such as gill damage, shell distortion, nodule formation, and decrease in condition index to their host (Trottier, 2014). Becker and Türkay (2017) indicated that larger hosts were probably preferred due to more significant food resources. Consequently, it might be expected that *P. nobilis* is a highly infested host. There was a relationship between damage to hosts and host size. Thus, small individuals infested with pinnotherids may be more severely affected than older individuals.

## Conclusion

In this study, the damage to the tissue of the infested fan mussel was inconspicuous during the whole study period. We think that *N. pinnotheres* is not directly effective on the healthy *P. nobilis* population. On the other hand, with adverse environmental conditions or the spread of infectious diseases of bivalve such as a mycobacterial and a haplosporidian parasite, it may threaten its physical condition.

## References

- Acarlı S., Lök A., Acarlı D., Serdar S., Küçükdermenci A., Yiğitkurt S. Kırtık, A., and Güler, M., 2010. Urla karantina adası civarında dağılım gösteren pına (*Pinna nobilis*, Linnaeus 1758) kabukları üzerine tutunan makrobentik türler. Türkiye' nin Kıyı ve Deniz Alanları (KAY) VIII. Ulusal Konferansı, Trabzon, Türkiye, 27 Nisan-1 Mayıs, 741-746.
- Acarlı, S., Lök, A., Acarlı, A., and Kırtık, A., 2018. Reproductive cycle and biochemical composition in the adductor muscle of the endangered species fan mussel (*Pinna nobilis*, Linnaeus 1758) from the Aegean sea, Turkey. Fresenius Environmental Bulletin 10:6506-6518.
- Addis, P., Secci, M., Brundu, G., Manunza, A., Corrias, S., and Cau, A., 2009. Density, size structure, shell orientation and epibiotic colonization of the fan mussel *Pinna nobilis* L. 1758 (Mollusca: Bivalvia) in three contrasting habitats in an estuarine area of Sardinia (W Mediterranean). Scientia Marina 73: 143-152.
- Akyol, O., and Ulaş, A., 2015. Two decapod crustacean species, pontoniapinnophylax (Otto, 1821) and *Nepinnotheres pinnotheres* (Linnaeus, 1758), living inside *Pinna nobilis* Linnaeus, 1758 in Izmir Bay (Aegean Sea, Turkey). Turkish Journal of Maritime and Marine Sciences 1(2): 102-106.
- Ayaz, A., Acarlı, D., Altınağaç, U., Özekinci, U., Kara, A., and Özen, Ö., 2006. Ghost fishing by monofilament and multifilament gillnets in Izmir Bay, Turkey. Fisheries Research 79: 267-271. doi: 10.1016/j.fishres.2006.03.029
- Basso, L., Vázquez-Luis, M., Gracia-March, J.R., Deudero, S., Álvarez, E., Vicente, N., Duarte, C.M., and Hendriks, I.E., 2015. Chapter three- the Pen Shell, *Pinna nobilis*: a review of population status and recommended research priorities in the Mediterranean Sea. Advance Marine Biology 71: 109-160. doi: 10.1016/bs.amb.2015.06.002
- Becker, C., and Türkay, M., 2010. Taxonomy and morphology of European pea crabs (Crustacea: Brachyura: Pinnotheridae). Journal of Natural History 44: 25-26. doi: 10.1080/00222931003760020
- Becker, C., and Türkay, M., 2017. Host specificity and feeding in European pea crabs (Brachyura: Pinnotheridae). Crustaceana 90: 819-844. doi: 10.1163/15685403-00003661
- Cabanellas-Reboredo, M., Blanco, A., Deudero, S., and Tejada, S., 2010. Effects of the invasive macroalga *Lophocladia lallemandii* on the diet and trophism of *Pinna nobilis* (Mollusca: Bivalvia) and its guests *Pontonia pinnophylax* and *Nepinnotheres pinnotheres* (Crustacea: Decapoda). Scientia Marina 74: 101-110. doi: 10.3989/scimar.2010.74n1101
- Calafiore, N., Costanzo, G., and Giacobbe, S., 1991. Mediterranean species of the genus *Pontonia* Latreille, 1829. I. Developmental stages of *Pontonia pinnophylax* (Otto, 1821) (Decapoda, Natantia, Pontoniinae) reared in the laboratory. Crustaceana 60: 52-75. doi: 10.1163/156854091X00263
- Carella, F., Aceto, S., F., Polloro, Miccio, A., Laria, C., Carasco, N., Prado, P., and De Vico, G., 2019. A mycobacterial disease is associated with the silent mass mortality of the pen shell *Pinna nobilis* along the Tyrrhenian coastline of Italy. Scientific Reports 9(2725): 1-12.
- Catanese, G., Graua, A., Valenciaa, J.M., Garcia-Marchc, J.R., Vázquez-Luisd, M., Alvarez, E., Deudero, S., Darriba, S., Carballalf, M.J., and Villalbf, A., 2018. Haplosporidium pinnae sp. nov., a haplosporidian parasite associated with mass mortalities of the fan mussel, *Pinna nobilis*, in the Western Mediterranean Sea. Journal of Invertebrate Pathology 157: 9-24. doi: 10.1016/j.jip.2018.07.006
- Capó, X., Tejada, S., Boxc, A., Deudero, S., and Sureda, A., 2015. Oxidative status assessment of the endemic bivalve *Pinna nobilis* affected by the oil spill from the sinking of the Don Pedro. Marine Environmental Research 110: 19-24. doi: 10.1016/j.marenvres.2015.07.013

- Cosentino, A., and Giacobbe, S., 2007. Aspects of epizootic mollusc assemblages on *Pinna* shells. I. Composition and structure. *Cahiers de Biologie Marine* 48: 187-197.
- Darriba, S., 2017. First haplosporidan parasite reported infecting a member of the Superfamily Pinnoidea (*Pinna nobilis*) during a mortality event in Alicante (Spain, Western Mediterranean). *Journal of Invertebrate Pathology* 148: 14-19. doi: 10.1016/j.jip.2017.05.006
- Davenport, J., Ezgeta-Balić D., Peharda M., Skejic, S., Gladon, Ž.N., and Matijevic, S., 2011. Size-differential feeding in *Pinna nobilis* L. (Mollusca: Bivalvia): exploitation of detritus, phytoplankton and zooplankton. *Estuarine, Coastal and Shelf Science* 92: 246-254. doi: 10.1016/j.ecss.2010.12.033
- Delongueville, C., and Scaillet, R., 2002. Bivalves et Crustacés - illustrations d'une association. *Novapex / Société*, 3(2-3): 51-55
- Deudero, S., Vázquez-Luis, M., and Álvarez, E., 2015. Human stressors are driving coastal benthic long-lived sessile fan mussel *Pinna nobilis* population structure more than environmental stressors. *PLoS ONE*, 10:e0134530. doi: 10.1371/journal.pone.0134530
- Fischer, W., Bauchot, M.L., and Schneider, M., 1987. Méditerranée et mer Noire, Zone de pêche 37. Revision 1, Vol. 1 Vegetaux et Invertébrés, p. 631, Rome.
- Galinou-Mitsoudi, S., Vlahavas, G., and Papoutsi, O., 2006. Population study of the protected bivalve *Pinna nobilis* (Linnaeus, 1758) in Thermaikos Gulf (North Aegean Sea). *Journal of Biology Research* 5: 47-53.
- García-March, J.R., Rafael, J., and Vicente, N., 2006. Protocol to study and monitor *Pinna nobilis* populations within marine protected areas. *Malta Environment and Planning Authority (MEPA)*, 62pp.
- Geiger, D., and Martin, J.W., 1999. The pea crab *Orthothes* *haliotidis* new species (Decapoda: Brachyura: Pinnotheridae) in the Australian abalone *Haliotis asinina* Linnaeus, 1758 and *Haliotis squamata* Reeve, 1846 (Gastropoda: Vetigastropoda: Haliotidae). *Bulletin of Marine Science* 64: 269-280.
- Giacobbe, S., 2002. Epibiotic mollusc communities on *Pinna nobilis* L. (Bivalvia, Mollusca). *Journal of Natural History* 36: 1385-1396. doi: 10.1080/00222930110056892
- Grove, M. W., and Woodin, S. A., 1996. Conspecific Recognition and Host Choice in a Pea Crab, *Pinnixa chaetoptera* (Brachyura: Pinnotheridae). *Biological Bulletin* 190: 359-366. doi: 10.2307/1543028.
- Gosling, E., 2003. *Bivalve Mollusks Biology-Ecology and Culture*. Fishing News Books, Oxford, UK.
- Hamel, J. F., Ng, P. K. L., and Mercier, A., 1999. Life cycle of the pea crab *Pinnotheres halingi* sp. Nov. an obligate symbiont of the sea cucumber *Holothuria scabra* Jaeger. *Ophelia* 50 (3): 149-175. doi: 10.1080/00785326.1999.10409393
- Hayward, P. J., and Ryland, J. S., 1995. *Handbook of the Marine Fauna of North-West Europe*. Oxford University Press 706p.
- Hendriks, I. E., Tenan, S., Tavecchia, G., Marbà, N., Jordà, G., Deudero, S., Álvarez, E., and Duarte, C. M., 2013. Boat anchoring impacts coastal populations of the pen shell, the largest bivalve in the Mediterranean. *Biological Conservation* 160: 105-113. doi: 10.1016/j.biocon.2013.01.012
- Katsanevakis, S., and Thessalou-Legaki, M., 2009. Spatial distribution, abundance and habitat use of the protected fan mussel *Pinna nobilis* in Souda Bay, Crete. *Aquatic Biology* 8: 45-54. doi: 10.3354/ab00204
- Katsanevakis, S., Tsirintanis, K., Tsaparis, D., Doukas, D., Sini, M., Athanassopoulou, F., Nikolaos Kolygas, M., Tontis, D., Koutsoubas, D., and Bakopoulos, V., 2019. The cryptogenic parasite *Haplosporidium pinnae* invades the Aegean Sea and causes the collapse of *Pinna nobilis* populations. *Aquatic Invasions* 14 (2): 150-164. doi: 10.3391/ai.2019.14.2.01
- Kennedy, H., Richardson, C. A., Duarte, C. M., and Kennedy, D. P., 2001. Diet and association of *Pontonia pinnophylax* occurring in *Pinna nobilis*: insights from stable isotope analysis. *Journal of the Marine Biological Association of the United Kingdom* 81: 177-178. doi: 10.1017/S0025315401003575
- Laganà, G., Giacobbe, S., Bellucio, E., Mannuccic, C., Galtieri, A., Ficarra, S., Kotyk, A., and Leuzzi, U., 2007. Lactate and malate dehydrogenase in the fan-shell associated shrimp, *Pontonia pinnophylax* (Otto): effects of temperature and urea. *Journal of Experimental Marine Biology and Ecology* 349(1): 27-34. doi: 10.1016/j.jembe.2007.03.017
- Lutzen, J. G., 1967. *Danmarks Fauna. Illustrerede Handbøger Over Den Danske Dyreverden Med Statsunderstøttelse Udgiven af Dansk Naturhistorisk Forening. Bd. 75 (Sækdyr)*. I Kommission Hos Gec Gads Forlag, København, 267p
- Natalotto, A., Sureda, A., Maisano, M., Spanó, N., Mauceri, A., and Deudero, S., 2015. Biomarkers of environmental stress in gills of *Pinna nobilis* (Linnaeus 1758) from Balearic Island. *Ecotoxicology and Environmental Safety* 122: 9-16. doi: 10.1016/j.ecoenv.2015.06.035
- Palmer, P., 1995. Occurrence of a New Zealand pea crab, *Pinnotheres novaezelandiae*, in five species of surf clam. *Marine and Freshwater Research* 46: 1071-1075. doi: 10.1071/MF9951071
- Rabaoui, L., Zouari, S.T., and Ben Hassine, O.K., 2008. Two species of Crustacea (Decapoda) associated with the fan mussel, *Pinna nobilis* Linnaeus, 1758 (Mollusca, Bivalvia). *Crustaceana* 8: 433-446. doi: 10.1163/156854008783797507
- Rabaoui, L., Tlig-Zouari, S., Cosentino, A., and Ben Hassine, O.K., 2009. Associated fauna of the fan shell *Pinna nobilis* (Mollusca: Bivalvia) in the northern and eastern Tunisian coasts. *Scientia Marina* 73: 129-141.
- Rada, B., and Milat, T., 2009. The first record of the Decapod, *Pontonia Pinnophylax*, in *Pinna nobilis* from the

- Southern Adriatic (Croatia) (Decapoda, Natantia). *Crustaceana* 82: 1383-1392. doi: 10.1163/001121609X12475745628469
- Reeves, M.N., and Brooks, W.R., 2001. Host selection, chemical detection, and protection of the symbiotic pinnotherid crabs *Dissodactylus crinitichelis* and *Clypeasterophilus rugatus* associated with echinoderms. *Symbiosis* 30: 239-256.
- Richardson, C. A., Kennedy, H., Duarte, C. M., Kennedy, D. P., and Proud, S. V., 1997. The occurrence of *Pontonia pinnophylax* (Decapoda: Natantia: Pontoninae) in *Pinna nobilis* (Mollusca: Bivalvia: Pinnidae) from the Mediterranean. *Journal of the Marine Biological Association of the United Kingdom* 77: 1227-1230. doi: 10.1017/S0025315400038741
- Richardson, C.A., Kennedy, H., Duarte, C.M., Kennedy, D.P., and Proud, S.V., 1999. Age and growth of the fan mussel *Pinna nobilis* from south-east Spanish Mediterranean seagrass (*Posidonia oceanica*) meadows. *Marine Biology* 133, 205-212. doi: 10.1007/s002270050
- Silas, E.G., and Alagarswami, K., 1965. On an instance of parasitisation by the pea-crab (*Pinnotheres* sp.) on the backwater clam (*Meretrix casta* (Chemnitz) from India, with a review of the work on the systematics, ecology biology and ethology of pea crabs of the genus *Pinnotheres latreille*. *Proceedings of the Symposium on Crustacea Held at Ernakulam*, pp.1163-1227.
- Stevens, P.M., 1990. Specificity of host recognition of individuals from different host races of symbiotic pea crabs (Decapoda: Pinnotheridae). *Journal of Experimental Marine Biology and Ecology* 143: 193-207. doi: 10.1016/0022-0981(90)90070-5
- Tebble, N., 1966. *British bivalve seashells a hand book identification*. Trustees of the British Museum, p. 213, London, U.K.
- Theodorou, J.A., James, R., Tzovenis, I., and Hellio, C., 2015. The recruitment of the endangered fan mussel (*Pinna nobilis* L.1758) on the ropes of a Mediterranean mussel long line farm. *Journal Shellfish Research* 34(2): 409-414. doi: 10.2983/035.034.0224
- Theodorou, J.A., James, R., Tagalis, D., Tzovenis, I., Hellio, C., and Katselis, G., 2017. Density and size structure of the endangered bivalve *Pinna nobilis*, (fan mussel) in the shallow water zone of Maliakos Gulf, Greece. *Acta Adriatica* 58(581): 63-76. doi: 10.32582/aa.58.1.5
- Trigos, S., and Vicente, N., 2018. Occurrence of Association of *Pinna nobilis* with Two Decapod Species in Mediterranean French Waters. *Thalassas: An International Journal of Marine Sciences* 35(1): 151-154. doi: 10.1007/s41208-018-0103-0
- Trottier, O., and Jeffs, A. G., 2012. Biological characteristics of parasitic *Nepinnotheres novaezelandiae* within a *Perna canaliculus* farm. *Diseases Aquatic Organisms* 101(1): 61-68. doi: 10.3354/dao02504.
- Trottier, O.J., 2014. *Biology and impact of the New Zealand pea crab (Nepinnotheres novaezelandiae) in aquacultured green lipped mussels (Perna canaliculus)*. PhD Thesis, University of Auckland, New Zealand, 154p.
- Vázquez-Luis, M., Borg, J. A., Morell, C., Banach-Esteve, G., and Deudero, S., 2015. Influence of boat anchoring on *Pinna nobilis*: a field experiment using mimic units. *Marine and Freshwater Research* 66 (9): 786-794. doi: 10.1071/MF14285
- Vicente, N., and Moreteau, J.C., 1991. Statust of *Pinna nobilis* L. en Méditerranée (Mollusque Eulamellibranche),” in *Les Espèces Marines à Protégeren Méditerranée*, eds C. F. Boudouresque, M. Avon, and M. Garvez (Marseille: GIS Posidonie Publ.), pp.159-168.
- Zavodnik, D., Hrs-Brenko, M., and Legac, M., 1991. Synopsis on the fan shell *Pinna nobilis* L. in the eastern Adriatic Sea. In: *Boudouresque, C.F., Avon, M., Gravez, V. (Eds.), Les Espèces Marines à Protégeren Méditerranée*. GIS Posidonie publications, Marseille, pp. 169-178.