

Araştırma Makalesi / Research Article

A Contribution to the Flora of the Region Between İnceburun (Kaş) and Çayağzı (Demre) (Antalya-Turkey)Özal GÜNER¹, Özlem ÇETİN^{2*}¹Gazi University, Faculty of Science, Department of Biology, Ankara, Turkey.²Selçuk University, Science Faculty, Biotechnology, Konya, Turkey.

* Corresponding author e-mail: ozlemcetin8419@gmail.com ORCID ID: <http://orcid.org/0000-0003-2886-3409>
ozalgnr57@hotmail.com ORCID ID: <http://orcid.org/0000-0002-5998-8530>

Geliş Tarihi: 06.03.2020

Kabul Tarihi: 04.10.2020

Abstract

This study includes the flora of İnceburun (Kaş) and Çayağzı (Demre) regions, which comprises one of the important tourism centers in Turkey. Twelve field trips were made to study area at different times of the year 2018-2019. The collected plant species were pressed and dried according to herbarium procedures and stored after plant identification. In this area, a total of 414 plant taxa and 266 genera, belonging to 66 families, were determined. The number of endemic and rare taxa found in the research area is 28. The family represented by the highest number of taxa was Fabaceae (49 taxa), followed by Asteraceae (48 taxa), Lamiaceae (32 taxa), Poaceae (23 taxa), Apiaceae (18 taxa), Caryophyllaceae (15 taxa), Brassicaceae (14 taxa), Orchidaceae (14 taxa), Boraginaceae (12 taxa), and Plantaginaceae (12 taxa). According to National Red Lists based on criteria and categories of the IUCN, one taxon is critically endangered (CR), two taxa are endangered (EN), eleven taxa are vulnerable (VU), seven taxa are conservation dependent (CD), three taxa are near threatened (NT), four taxa are least concern (LC), of these, *Ophrys argolica* H.Fleischm. is assessed as VU at a global level. Fifteen taxa are included under CITES Appendix II and two species are also protected under Appendix I of the Bern Convention. Maquis, phrygana, forest, rocky, halophytic, and sand dune are the main vegetation types in the area.

© Afyon Kocatepe Üniversitesi

İnceburun (Kaş) ve Çayağzı (Demre) (Antalya-Türkiye) Arasındaki Bölge Florasına Katkıları**Öz**

Bu çalışma, Türkiye'nin önemli turizm merkezlerinden birisi olan İnceburun (Kaş) ve Çayağzı (Demre) arasındaki bölgenin florasını içermektedir. Çalışma alanına 2018-2019 yıllarında oniki arazi çalışması yapılmıştır. Toplanan bitki örnekleri standart herbarium prosedürlerine göre preslenip kurutulduktan sonra bitki teşhisleri yapılarak saklanmıştır. Bu alanda 66 familyaya ait toplam 414 takson ve 266 cins tespit edilmiştir. Endemik ve nadir bitki taksonlarının sayısı 28'dir. En fazla taksonla temsil edilen familyalar sırası ile; Fabaceae (49 takson), Asteraceae (48 takson), Lamiaceae (32 takson), Poaceae (23 takson), Apiaceae (18 takson), Caryophyllaceae (15 takson), Brassicaceae (14 takson), Orchidaceae (14 takson), Boraginaceae (12 takson) ve Plantaginaceae (12 takson)'dir. IUCN kriterlerine ve kategorilerine dayalı Ulusal Kırmızı Listeye göre, bir tür kritik kategoride, iki taksondan tehlikede kategorisinde (EN), onbir takson duyarlı kategorisinde (VU), yedi takson korumaya tabi kategorisinde (CD), dört takson ise düşük riskli kategorisinde (LC), üç takson tehlikeye yakın kategorisinde (NT) yer almaktadır. *Ophrys argolica* H.Fleischm türü küresel seviyede VU kategorisinde değerlendirilmektedir. CITES listesinde yer alan 15 takson ve Bern sözleşmesinde yer alan 2 takson çalışma alanı içerisinde yayılışa sahiptir. Çalışma alanındaki vejetasyon tipleri maki, frigana, orman, kaya, halofitik ve kumuldur.

© Afyon Kocatepe Üniversitesi

Keywords

Antalya; Endemizm;
Floristik Study;
Mediterranean Region

Anahtar kelimeler

Antalya; Endemizm;
Floristik Çalışma;
Akdeniz Bölgesi

1. Introduction

In terms of plant biodiversity, Antalya is one of Turkey's richest provinces. The presence of sudden altitude changes within short distances, climatic variations from coastal to inland areas, as well as variable topography contribute to its rich diversity of species (Deniz *et al.* 2015). Several floristic studies have been conducted in various part of Antalya. These studies ensure that the list of plant taxa distributed in Antalya and the endemism ratio are continuously updated. Flora of the Phaselis region have been published in a series of papers by Göktürk (2015, 2016, 2017), titled the *Flora of the Ancient City of Phaselis I, II and III*. The last study listed 631 taxa belonging to 360 genera and 84 families from this province. A floristic study was carried out in the Kıbrıs River wildlife development area by Fener and Aykurt (2019), which listed 538 taxa belonging to 276 genera and 73 families. The Kaş-Kekova Specially Environmental Protected Area (SEPA) Determination of Biodiversity Project was carried out in 2010, and 272 species were identified by project team (IntKyn. 1).

The aim of the present study was to contribute to the flora of the area between İnceburun and Çayağzı. The study area is found in the C2 square according to the grid square system of Davis (1965-1985) and is located within the Mediterranean phytogeographical zone. We consider that floristic studies are still necessary for the development of conservation strategies and the management of the unique Mediterranean maquis in Antalya.

2. Material and Method

2.1 Study area

In this study, the flora of the area between İnceburun and Çayağzı was examined (Figure 1). The study area comprises Çayağzı region (Demre) and Kaş-Kekova SEPA, and is located in the province of Antalya and the western Mediterranean coast of Turkey. Kekova Island and the surrounding coast were declared a Specially Protected Area in 1990 to protect the biological diversity and cultural richness. As a result of some projects carried out between 2002 and 2006, and with the decision of the Council of Ministers, the

boundaries of Kekova Specially Protected Area have been extended to include the coastline and the islands in the west, up to İnceburunin Kaş. The protected area has been renamed as the Kaş-Kekova Specially Environmental Protected Area (Official Gazette dated 2006). The SEPA covers a total area of 258.3 km² and it is composed of 166 km² of marine area and 92 km² of terrestrial area, with 107km coastline (Akça *et al.* 2012). SEPA consists of three villages, Kapaklı, Çevreli and Üçağzı, and it also includes some parts of Bayındır, Belenli, Boğazcık, and Sahilkılınçlı. Kale-Üçağzı, Çevreli, and Kapaklı villages administratively fall within the Demre District to the east of the SEPA.

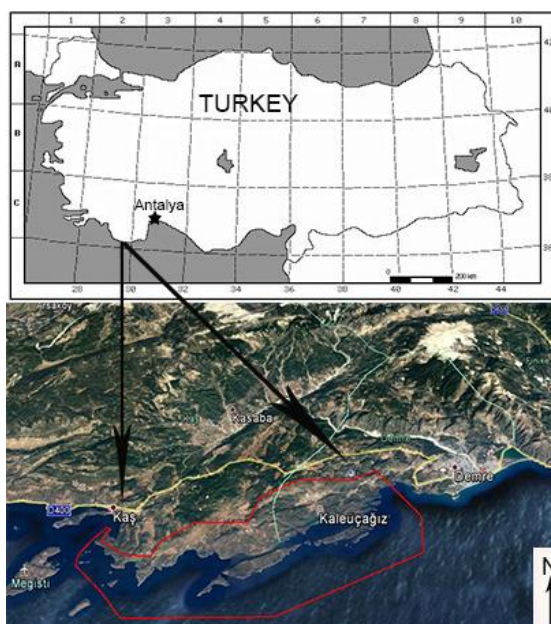


Figure 1. Map of study area (Between İnceburun and Çayağzı, Antalya -Turkey)

2.2 Climate

Meteorological data were obtained from Kaş and Kale-Demre Meteorological stations (DMİ 2015). According to Kaş Meteorological stations data, the annual average rainfall is 64,5 mm, the most rainy month is January (43,9 mm) and the average temperature is 20 °C, January is the coldest month, with temperatures averaging 12.6 °C, August is the hottest month, with temperatures averaging 28.6 °C in Kaş. According to Kale-Demre Meteorological stations data, the annual average rainfall is 64.5 mm, the most rainy month is December and the average temperature is 18.8 °C, January is the coldest month, with temperatures averaging 10.1

°C, August is the hottest month, with temperatures averaging 28.1 °C in Demre (Figure 2).

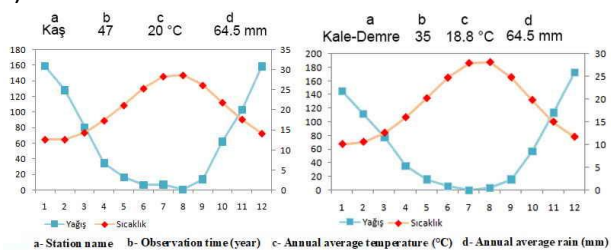


Figure 2. Thebioclimaticdiagram of Kaş and the Kale-Demre

2.3 Field survey

Twelve field trips were made to study area at different times of the year 2018-2019. The collected plant species were pressed and dried according to herbarium procedures and stored after plant identification. The Flora of Turkey and East Aegean Islands (Davis 1965-1985, Davis *et al.* 1988, Güner *et al.* 2000), Flora of Cyprus (Meikle 1977, 1985) and Flora of Europea (Tutin *et al.* 1964–1980) were used for the plant identification. The author citations for species name follow Brummitt and Powell (1992) and as updated database of the International Plant Names Index (IPNI). The names of taxa are arranged according to the Turkey Plant List (VascularPlants). Family, genus and taxa names are given in an alphabetical order on the floristic list.

3. Results and Discussion

3.1 Floristic Results

During this project, 369 plant taxa belonging to 245 genera and 66 families were collected, observed, and photographed in the study area. The literature survey revealed that 272 taxa were previously recorded from the Kaş-Kekova SEPA (IntKyn. 1). According to our field studies, examination of herbarium (GAZI) and screening of literature (only based on previous studies and were not examined by us), the total number reached 414 plant taxa belonging to 266 genera and 66 families. The number of endemic and rare plants found in the research area is 28 (Figure 3). Additions to the flora of the area, either from new records generated in the field study, or from recent literature, are reported in Appendix 1.

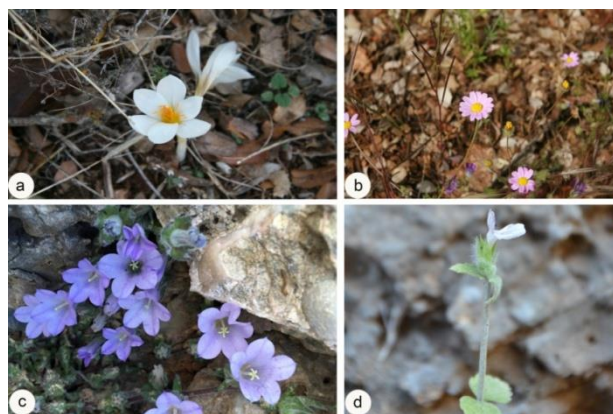


Figure 3. Endemic plants distributed in study area. a- *Crocus cancellatus* subsp. *lycius*, b- *Anthemis rosea* subsp. *carnea*, c- *Campanula aktascii*, d- *Stachys bombycine*

The richest families in terms of plant genus were identified as Asteraceae (12.26%; 32 genera) and Fabaceae (9.19%; 24 genera), Poaceae (7.66%; 20 genera), Lamiaceae (7.27%; 19 genera), Apiaceae (5.74%; 15 genera), Brassicaceae (5.36%; 14 genera), Caryophyllaceae (3.06%; 8 genera), Boraginaceae (3.06%; 8 genera), Asparagaceae (2.63%; 7 genera), Orchidaceae (1.91%; 5 genera) respectively (Figure 4).

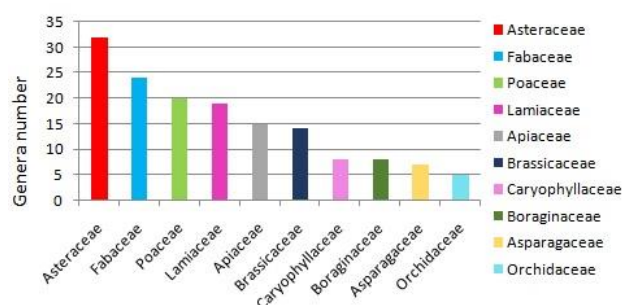


Figure 4. The largest 10 families based on the genus number in the study area

The family represented by the highest number of taxa was Fabaceae (49 taxa), followed by Asteraceae (48 taxa), Lamiaceae (32 taxa), Poaceae (23 taxa), Apiaceae (18 taxa), Caryophyllaceae (15 taxa), Brassicaceae (14 taxa), Orchidaceae (14 taxa), Boraginaceae (12 taxa), and Plantaginaceae (12 taxa) (Figure 5).

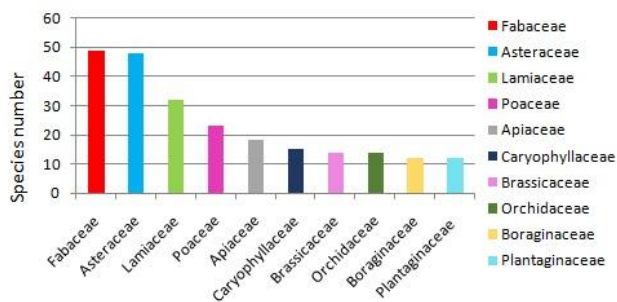


Figure 5. The largest 10 families based on the species number in the study area

In the chorological spectrum the Mediterranean elements predominates, which highlighting the geographical position and climatic characteristics of the study area. Mediterranean elements regarded as first with 50.43%, followed by Irano-Turanian elements (1.58%) and Euro-Siberian elements (1.12%). 46.87% of the taxa are multi-regional, or of unknown phytogeographic region (Figure 6).

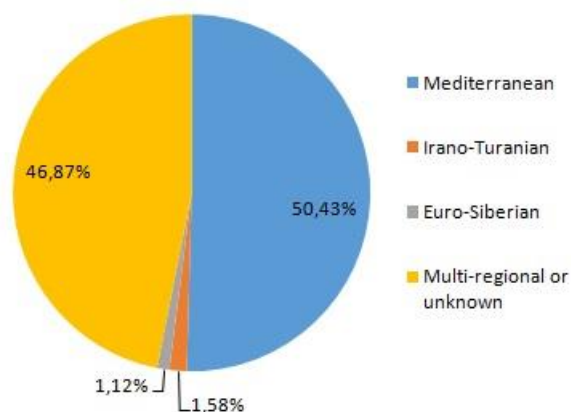


Figure 6. Phytogeographic distribution of taxa in studied area

3.2 Conservation status

Taxa collected in the field works have been evaluated with conservation and risk status. According to National Red Lists based on criteria and categories of the IUCN (Int Kyn. 2), one taxon is Critically endangered (*Campanula aktascii*), two taxa are endangered (*Campanula lycica*, *Ophrys lycia*), eleven taxa are vulnerable (*Aristolochia guichardii*, *Arenaria luschanii*, *Arenaria pamphylica*, *Silene delicatula*, *Erica bocquetii*, *Teucrium montbretii* Benth. subsp. *pamphylicum*, *Galium pseudocapitatum*, *Limonium effusum*, *Narcissus serotinus*, *Biarum pyrami*, *Barlia robertiana*), seven taxa are conservation dependent (*Anthemis rosea*

subsp. *carnea*, *Alkanna macrosiphon*, *Medicago carica*, *Quercus aucheri*, *Ballota glandulosissima*, *Sideritis albiflora*, *Allium sandrasicum*), four taxa are of least concern (*Bufonia calyculata*, *Scutellaria brevibracteata* subsp. *brevibracteata*, *Rosularia globulariifolia*, *Galium brevifolium* subsp. *brevifolium*), three taxa are near threatened (*Ajuga bombycina*, *Stachys bombycina*, *Crocus cancellatus* subsp. *lycius*), of these, *Ophrys argolica* H.Fleischm. is assessed as VU at a global level. Furthermore, three taxa are included in the Appendix of the Bern Convention, and 16 taxa are included in Appendices II of CITES. More specifically, *Ophrys argolica* and *Ophrys lycia* Renz&Taubenheim are included in the BERN and CITES Convention. *Anacamptis pyramidalis* (L.) Rich., *Barlia robertiana* (Loisel.) Greuter, *Ophrys holoserica* (Burm.f.) Greuter, *Orchis anatolica* Boiss., *Orchis coriophora* L., *Orchis laxiflora* Lam., *Orchis mascula* (L.) L., *Orchis papilionacea* L., *Orchis quadripunctata* Cyr. ex Ten., *Orchis sancta* L., *Serapias bergonii* E.G.Camus, *Serapias orientalis* (Greuter) H.Baumann & Künkele, *Euphorbia dendroides* L., *Cyclamen graecum* Link. Are included in the CITES Convention (Figure 7).

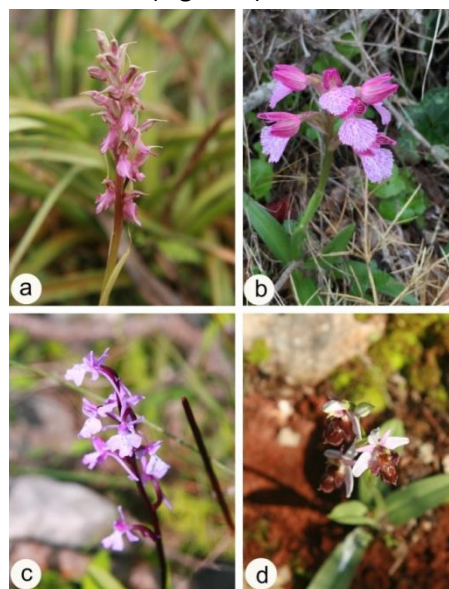


Figure 7. Plants protected by CITES Appendix II in study area. a- *Orchis sancta*, b- *Orchis papilionacea*, c- *Orchis anatolica*, d- *Ophrys holoserica*

3.3 Vegetation of Study Area

Maquis, phrygana, forest, rocky, halophytic and sand dune are the main vegetation types in the study area (Figure 8). Maquis is a natural habitat

and composed primarily of leathery leaved and evergreen shrubs, semi-shrubs, and small trees (Aksoy 2006). Maquis elements have a deep root system, allowing them to occur even in areas with thin soil cover or stony-rock areas (Atalay and Efe 2010). Maquis species are widespread in the area, and its dominant species are *Quercus aucheri* Jaub. & Spach, *Olea europaea* L., *Arbutus andrachne* L., *Pistacia terebinthus* L., and *Phillyrea latifolia* L.



Figure 8. General view of study area a-Okçuöldüğü, b-Çevreli, c-Kale, d- Çayağzı

Pinus brutia Ten. is one of the important forest trees of the Mediterranean region, reaching its greatest distribution in southern Turkey (Gezer 1986). *Pinus brutia* forests spread on restricted areas in the southern slopes of Kapaklı, northern slopes of Kekova island, and between Kapaklı and Çevreli villages. In some parts of the study area, maquis and *P. brutia* forests are also found together.

Phrygana (garrigue) species are common in the areas where shrubs were destroyed. They have needles and deep roots, and they require less humidity to survive. Phrygana species have small, thick, and leathery leaves and can resist hot and dry climate (Atalay 1983, Efe and Greenwood 2007, İlseven 2017). *Sarcopoterium spinosum* (L.) Spach, *Genista acanthoclada* DC., and *Euphorbia acanthothamnus* Heldr. & Sart. ex Boiss. are frigana species that commonly occur in the study area. The northwestern regions of Çevreli village, eastern region of Kale village, region between Sahilkılıçlı and Çevreli, and coastal low-lands of Kekova and Akvaryum islands are the areas where phrygana is widely seen.

In several coastal localities, a number of shallow areas fill up with water during the winter, forming muddy, saline marshlands. As the brackish water evaporates in the summer, the salinity dramatically increases, and some marshlands may even dry up, leaving behind a pool rich in mud and salt. There is a saline area such as this one in the Alan region. *Salicornia perennans* Wild., *Halocnemum strobilaceum* (Pall.) M.Bieb. and *Halimione portulacoides* (L.) Aellen are seen in this area.

As a result of the geological formation of the region, the coasts in the study area are mainly characterized by rocky shores and cliffs that can sharply rise to slopes that eventually reach 550 m altitude (Demir 2011). Vegetated sea cliffs of the coast contain *Ptilostemon chamaepeuce* (L.) Less., *Inula heterolepis* Boiss., and *Crithmum maritimum* L. vegetated calcareous inland cliffs present great regional diversity, with many endemic plant species, such as *Teucrium montbretii* Benth. subsp. *pamphylicum* P.H.Davis, *Ballota glandulosissima* Hub-Mor. & Patzak, and *Erica bocquetii* (Peşmen) P.F.Stevens. *Ferula tingitana* L. is also found in this habitat.

The olive tree (*Olea europaea* L. subsp. *europaea*) is the most symbolic species in the Mediterranean Basin due to its ecological, economic, and cultural importance (Anestiadou *et al.* 2017). The culture of olives and olive oil is important for the whole Mediterranean Basin, and olive oil production has been undertaken for many years in the Mediterranean region of Turkey. Pomegranates, grapes, figs, almonds, and olives were discovered in a sunken ship speculated to belong to the Early Bronze Age period, found in Uluburun, in the vicinity of Kaş-Antalya (Efe *et al.* 2011). Also, the existence of candidate monumental olive trees in the region is evidence that olive has been cultivated for thousands of years in the study area. There are at least five candidate monumental olive trees in Ucağzı and Sahilkılıçlı villages.

The most beautiful forest of Boz pınal oak (*Quercus aucheri*), which is endemic to the Eastern Mediterranean, grows in the study area. *Quercus aucheri* was recorded for C1, C2 and C3 squares, which are in the southwest part of Turkey. In this area, the species has a scattered expansion due to

fragmentation of its area (Özel 2003). The *Mediterranean Oaks Networks Reports* pointed out that *Q. aucheri* trees have been degraded by local people in southwest Anatolia in different ways, such as cutting, overgrazing, acorn collecting, etc., suggesting that the distribution area should be protected. Conservation of *Q. aucheri* in the natural habitat is very important to protect genetic resources and biodiversity (Özel 2003).

The study area covers part of the distribution area of the *Ophrys lycia*, which is endemic to Kaş (Antalya) and is only known from its type locality. Orchidaceae is a large family consisting of over 1000 genera; most orchid genera contain one or more threatened or endangered species. Many terrestrial orchids are rare, with specialized habitat requirements, making them particularly susceptible to habitat fragmentation and modification. They have often been used as flagship species in conservation initiatives because of their uniqueness and rarity and, additionally, are often touted as important early warning bioindicators for ecosystem health given their sensitivity to environmental degradation (Wang *et al.* 2015). Like other endangered orchid species, *O. lycia* and its habitat are under threat. The species was previously classified as endangered (Ekim *et al.* 2000), then proposed to be critically endangered (CR) by Deniz (2013). In order to protect the population and ensure the survival of this species,

4. References

Akça, N., Araç, N. and Oruç, A., 2012. Kaş-Kekova specially protected area marine management plan and its implementation—MedPAN South Pilot Project Turkey, WWF, İstanbul, 1-18.

Aksoy, N., 2006. Maki. In: Eken, G., Bozdoğan, M., İsfendiyaroğlu, S., Kılıç, D.T. and Lise, Y. (eds.), Türkiye'nin önemli doğa alanları-I, Doğa Derneği, 40–42.

Anestiadou, K., Nikoloudakis, N., Hagidimitriou, M. and Katsiotis, A., 2017. Monumental olive trees of Cyprus contributed to the establishment of the contemporary olive germplasm. *PlosOne*, **12(11)**, e0187697.

a conservation and research project, *Ophrys lycia* (Lycian Kaş Orchid) Conservation Project, was created by Deniz *et al.* (2016).

The Mediterranean flora of West Anatolia shows many affinities with that of the East Aegean islands and even with Greek mainland (Ekim and Güner 2000). *Ricotia carnosula* Boiss. &Heldr., *Veronica stamatiadae* M.A.Fisch. &Greuter, *Campanula podocarpa* Boiss., *Campanula hagielia* Boiss., *Phlomis lycia* D.Don, *Fritillaria elwesii* Boiss., and *Alkanna tubulosa* Boiss. are endemic to the Eastern Mediterranean, and they are distributed in the east Aegean Islands and western Anatolia.

According to information was obtained from local people, leaves and flowers of *Origanum onites* and leaves of *Salvia fruticosa* and *Laurus nobilis* are consumed as spices, teas and herbal drugs.

Acknowledgements:

This study was in partial of the Kaş-Kekova Special Environmental Protection Area Biological Diversity Research Project (2019) which was supported financially by ministry. We are grateful to Ministry of Environment and Urbanization, General Directorate for Protection of Natural Assets for granting this research project. We thanks to Prof. Dr. Varol Tok for project management and coordination. We also thank the Nevin Kurt Karakaya, Şöhret Kumcu, Rızvan Tunç, Emre Keskin, Lale Aktay and Turunç Peyzaj for help in field work and supports.

Atalay, İ. and Efe, R., 2010. Structural and distributional evaluation of forest ecosystems in Turkey. *Journal of Environmental Biology*, **31**: 61–70.

Atalay, İ., 1983. Türkiye vejetasyon coğrafyasına giriş. Ege University Press, 130.

Brummitt, R.K. and Powell, C.E., 1992. Authors of plant names. Royal Botanic Gardens, Kew, 1-732.

Davis, P.H., Mill, R.R. and Tan, K., 1988. Flora of Turkey and the East Aegean Islands, vol. 10, Edinburgh University Press, 1-550.

Davis, P.H., 1965-1985. Flora of Turkey and the East Aegean Island vols. 1–9. Edinburgh University Press.

- Demir, V., 2011. Marine biological diversity assessment for marine conservation planning in Antalya-Kaş using decision support systems. Doktora Tezi, Deniz Bilimleri ve İşletmeciliği Enstitüsü, İstanbul Üniversitesi, 105.
- Deniz, İ.G., 2013. Critically Endangered (CR) *Orchid* species of Antalya province of Turkey, *Acta Horticulturae*, **1002**, 37–41.
- Deniz, İ.G., Aykurt, C. and Başaran, M.A., 2015. Taxonomic and ecologic properties of the endangered *Iris pamphylica* (Iridaceae) endemic to S.W. Anatolia. *Journal of Applied Biological Sciences*, **9(2)**, 01–06.
- Deniz, İ.G., Vural, M., Kara, Ö., Aykurt, C., Cappellaro, E., Başaran, M.A., Ülküdar, M., Kilis, B.T. and Kısa, A., 2016. *Ophrys lycia* (Likya Orkidesi, Kaş Orkidesi) koruma projesi, Tubitak Project No: 111T834.
- Efe, R. and Greenwood, M. 2007. Vegetation zonation patterns on the Göksu Delta (Southern Turkey). *Journal of Applied Science*, **7**, 2277–2284.
- Efe, R., Soykan, A., Cürebal, İ. and Sönmez, S., 2011. Olive and Olive Oil Culture in the Mediterranean Basin. In: Efe, R., Öztürk, M. and Ghazanfar, S. (eds.), *Environment and Ecology in the Mediterranean Region*. Cambridge Scholars Publishing, 51-62.
- Ekim, T. and Güner, A., 2000. The floristic richness of Turkey. *Curtis's Botanical Magazine*, **17(2)**, 48–59.
- Ekim, T., Koyuncu, M., Vural, M., Aytaç, Z. and Adigüzel, N., 2000. Red data book of Turkish plants (Pteridophyta and Spermatophyta). Turkish Association for the Conservation of Nature, Ankara, Turkey, 1-246.
- Fener, D. and Aykurt, C., 2019. The flora of Kıbrıs River wild life development area (Kaş-Antalya/Turkey). *Biological Diversity and Conservation*, **12(1)**, 107–121.
- Gezer, A., 1986. The silviculture of *Pinus brutia* in Turkey, *Options Mediterraneennes*, **1**, 55–66.
- Appendix 1. The abbreviations used in the text and floristic list are as follows: CR: critically endangered, EN: endangered, LC: least concern, VU: vulnerable, Medit: Mediterranean, E.Medit: East Mediterranean, Göktürk, R.S., 2015. Phaselis Antik Kenti Florası I. *Phaselis*, **1**, 81–131.
- Göktürk, R.S., 2016. Phaselis Antik Kenti Florası II. *Phaselis*, **2**, 57–101.
- Göktürk, R.S., 2017. Phaselis Antik Kenti Florası III. *Phaselis*, **3**, 187–224.
- Güner, A., Özhatay, N., Ekim, T. and Başer, K.H.C., 2000. Flora of Turkey and the East Aegean Islands, vol. 11. Edinburgh University Press, 1-656.
- İlseven, S., 2017. Analysis of maquis and garrigue communities on the island of Cyprus and comparison with Calabrian pine communities in terms of ecological characteristics, *Journal of Environmental Biology*, **38**, 955–960.
- Meikle, R.D., 1977. Flora of Cyprus, vol. 1. Kew, The Bentham-Moxon Trust Royal Botanic Gardens, 1-832.
- Meikle, R.D., 1985. Flora of Cyprus, vol. 2. Kew, The Bentham-Moxon Trust Royal Botanic Gardens, 1-1969.
- Özel, N., 2003. Country report: Turkey. In: Bozzano, M. and Turok, J. (eds.), *Mediterranean Oaks Network, Report of the second meeting*, International Plant Genetic Resources Institute, Rome, 48–50.
- Tutin, T., Heywood, V., Burges, N., Valentine, D., Walters, S. and Webb, D. 1964-1980. *Flora Europaea*, vol 1–5, Cambridge University Press.
- Wang, H.H., Wonkka, C.L., Treglia, M.L., Grant, W.E., Smeins, F.E. and Rogers, W.E., 2015. Species distribution modelling for conservation of an endangered endemic Orchid. *AoB PLANTS*, **7**, 1-12.

İnternet kaynakları

1. https://webdosya.csb.gov.tr/db/destek/icerikler/kas_kekova_ockb_biyolojik_cesitliliğin_tespit-projesi-20191127153326.pdf (13.03.2029)
2. <http://www.tehditalindabitkiler.org.tr/v2/>

Euro-Sib: Euro-Siberian, Ir.-Tur.: Irano-Turanian, **End.:** Endemic, IUCN: International Union for the Conservation of Nature and Natural Resources. Localities number: 1- Kapaklı village and its

surrondings, 2- between Kapaklı and Çevreli, 3- Kapaklı canyon, 4- Çevreli village and northern slopes, 5- between Üçağzı and Çevreli, 6- Alan, 7- Kale, 8- Sahilkılınçlı and its surrondings, 9- Okçuöldüğü, 10- Üzüm İskelesi, 11- Sıcak Peninsula, 12-Kocakarı cove, 13- Kekova island, 14- Kişneli island, 15- Çayağzı, 16- western part of Okçuöldüğü, 17- southwest of Boğazcık, 18- Boğazcık, 19- northern side of Okçuöldüğü

FLORISTIC LIST

PTERIDOPHYTA

ASPLENIACEAE

Asplenium ceterach L., 9, 01.11.2018, Ö.Çetin 2056 &Ö.Güner

PTERIDACEAE

Cheilanthes pteridioides (Reich.) C.Chr., 9, 01.11.2018, Ö.Güner 3400 &Ö.Çetin

SPERMATOPHYTA

GYMNOSPERMAE

PINACEAE

Pinus brutia Ten., 2, 28.04.2019, Ö.Çetin 1991 &Ö.Güner

ANGIOSPERMAE

DICOTYLEDONEAE

AMARANTHACEAE

Halimione portulacoides (L.) Aellen, Literature

Halocnemum strobilaceum (Pall.) M.Bieb., Literature

Salicornia perennans Wild., 6, 01.11.2018, Ö.Çetin 2060 &Ö.Güner

ANACARDIACEAE

Pistacia lentiscus L., 1, 2, 25.05.2018, Ö.Çetin 2011 &Ö.Güner

Pistacia terebinthus L. subsp. *terebinthus*, Medit., 1, 6, 7, 25.05.2018, Ö.Çetin 2015 &Ö.Güner

APIACEAE

Anethum graveolens L., 9, 06.04.2019, Ö.Çetin 2255 &Ö.Güner

Artemisia squamata L., 1, 04.04.2019, Ö.Çetin 2217 &Ö.Güner

Bunium ferulaceum Sm., Medit., 1, 04.04.2019, Ö.Çetin 2205 &Ö.Güner

Bupleurum gracile d'Urv., E. Medit., 9, 04.04.2019, Ö.Çetin 2324 &Ö.Güner

Caucalis platycarpus L., 8, 24.04.2019, Ö.Çetin 2286 &Ö.Güner

Crithmum maritimum L., 16, 26.04.2019, Ö.Güner 3481 &Ö.Çetin

Daucus conchitae Greuter, 7, 25.05.2018, Ö.Çetin 2030 &Ö.Güner

Eryngium falcatum F.Delaroche, E. Medit., 10, 17.05.2019, Ö.Çetin 2340 &Ö.Güner

Ferula tingitana L., Medit., 1, 13, 14, 27.04.2019, Ö.Çetin 2329 &Ö.Güner

Lagoecia cuminoides L., Medit., 1, 4, 10, 24.04.2019, Ö.Çetin 2280 &Ö.Güner

Scaligeria napiformis (Willd.) Grande, E. Medit., 10, 24.04.2019, Ö.Çetin 2272 &Ö.Güner

Scandix pecten-veneris L., 7, 8, 05.04.2019, Ö.Çetin 2244 &Ö.Güner

Smyrniolimon olusatrum L., Medit., 5, 23.02.2019, Ö.Çetin 2115 &Ö.Güner

Tordylium apulum L., Medit., 7, 25.05.2018, Ö.Çetin 2016 &Ö.Güner

Tordylium trachycarpum (Boiss.) Al-Eisawi, E. Medit., 1, 04.04.2019, Ö.Çetin 2196 &Ö.Güner

Torilis leptophylla (L.) Rchb.f., 1, 04.04.2019, Ö.Çetin 2192 &Ö.Güner

Torilis nodosa (L.) Gaertn., 18, 27.04.2019, Ö.Çetin 2330 &Ö.Güner

Torilis tenella (Delile) Rchb.f., 18, 27.04.2019, Ö.Çetin 2320 &Ö.Güner

APOCYNACEAE

Nerium oleander L., Medit., 1, 25.05.2018, Ö.Çetin 2014 &Ö.Güner

ARISTOLOCHIACEAE

Aristolochia guichardii P.H.Davis&M.S.Khan, Medit., **End.**, 7, 25.04.2019, Ö.Çetin 2294 &Ö.Güner

Aristolochia parvifolia Sibth. &Sm, Medit., 1, 7, 15.03.2019, Ö.Çetin 2129 &Ö.Güner

ASTERACEAE

Aetheorhiza bulbosa (L.) Cass., Medit., 7, 15.03.2019, Ö.Güner 3998 &Ö.Çetin

Anthemis chia L., E. Medit., 7, 15.03.2019, Ö.Çetin 2128 &Ö.Güner

Anthemis rosea Sm. subsp. *carnea* (Boiss.) Grierson, E. Medit., **End.**, 9, 25.04.2019, Ö.Çetin 2293 &Ö.Güner

Asteriscus aquaticus (L.) Less, Medit., 10, 17.05.2019, Ö.Çetin 2341 &Ö.Güner

Asteriscus spinosus (L.) Sch.Bip., Medit., 7, 17.05.2019, Ö.Çetin 2342 &Ö.Güner

Atractylis cancellata L., Medit., 1, 25.05.2018, Ö.Çetin 2037 &Ö.Güner

Bellis annua L., Medit., 7, 15.03.2019, Ö.Çetin 2144 &Ö.Güner

*Bellis perennis*L., Euro-Sib., 8, 01.11.2018, Ö.Çetin 2061 &Ö.Güner

*Bellis sylvestris*Cirillo, Medit., 8, 01.11.2018, Ö.Güner 3401 &Ö.Çetin

Calendula arvensis (Vaill.) L., 1, 9, 16.03.2019, Ö.Çetin 2161 &Ö.Güner

Carduus argentatus L., Medit., 18, 17.05.2019, Ö.Çetin 2343 &Ö.Güner

Carduus nutans L. subsp. *nutans*, 4, 17.05.2019, Ö.Çetin 2345 &Ö.Güner

Carduus pycnocephalus L., 2, 25.05.2018, Ö.Çetin 2013 &Ö.Güner

*Carduus rechingerianus*Kazmi, Medit., 3, 25.04.2019, Ö.Çetin 2299 &Ö.Güner

*Centaurea iberica*Trev. exSprengel, Literature

Cichorium intybus L., 1, 25.05.2018, Ö.Çetin 2012 &Ö.Güner

Cichorium pumilum Jacq., E. Medit., 11, 26.04.2019, Ö.Çetin 2315 &Ö.Güner

Cirsium creticum d'Urv subsp. *creticum*, Medit., 1, 25.05.2018, Ö.Çetin 2010 &Ö.Güner

Cirsium vulgare (Savi) Ten., Literature

Conyza bonariensis (L.) Cronquist, 7, 21.07.2019, Ö.Çetin 2352 & Ö.Güner
Cota tinctoria (L.) J.Gay var. *tinctoria*, 1, 25.05.2018, Ö.Çetin 2009 & Ö.Güner
Crepis reuteriana Boiss. & Heldr. subsp. *reuteriana*, E. Medit., 7, 05.04.2019, Ö.Çetin 2231 & Ö.Güner
Crepis sancta (L.) Bornm., 9, 16.03.2019, Ö.Çetin 2188 & Ö.Güner
Crupina crupinastrum (Moris) Vis., 9, 04.04.2019, Ö.Çetin 2267 & Ö.Güner
Echinops spinosissimus Turra. subsp. *spinosissimus*, 1, 25.05.2018, Ö.Çetin 2008 & Ö.Güner
Filago arvensis L., 2, 25.05.2018, Ö.Çetin 2007 & Ö.Güner
Filago eriocephala Guss., E. Medit., 2, 26.04.2019, Ö.Çetin 2276 & Ö.Güner
Geropogon hybridus (L.) Sch.Bip, Medit., 9, 06.04.2019, Ö.Güner 3461 & Ö.Çetin
Glebionis coronaria (L.) Spach, Medit., 1, 7, 04.04.2019, Ö.Çetin 2198 & Ö.Güner
Glebionis segetum (L.) Four., Medit., 1, 7, 04.04.2019, Ö.Çetin 2201 & Ö.Güner
Hyoseris scabra L., Medit., Literature
Inula crithmoides L., 15, 23.02.2019, Ö. Güner 3418 & Ö.Çetin
Inula graveolens (L.) Desf., Medit., 17, 1, 01.11.2018, Ö. Güner 3402 & Ö. Çetin
Inula heterolepis Boiss., E. Medit., 2, 7, 26.05.2018, Ö.Çetin 2034 & Ö.Güner
Lamyropsis cynaroides (Lam.) Dittrich, E. Medit., Literature
Notobasis syriaca (L.) Cass, Medit., 6, 28.04.2019, Ö.Çetin 2336 & Ö.Güner
Onopordum rhodense Boiss. ex Rech. F., 5, 7, 25.05.2018, Ö.Çetin 2006 & Ö.Güner
Phagnalon graecum Boiss. & Heldr., E. Medit., 9, 16.03.2018, Ö.Çetin 2163 & Ö.Güner
Picnomon acarna (L.) Cass., Medit., 1, 25.05.2018, Ö.Çetin 2005 & Ö.Güner
Ptilostemon chamaepeuce (L.) Less., E. Medit., 9, 1, 25.05.2018, Ö.Çetin 2004 & Ö.Güner
Rhagadiolus stellatus (L.) Gaertn., Medit., 1, 04.04.2019, Ö.Çetin 2169 & Ö.Güner
Scorzonera elata Boiss., D.Akd, 9, 06.04.2019, Ö.Güner 3462 & Ö.Çetin
Senecio vernalis Waldst. & Kit., 5, 23.02.2019, Ö.Çetin 2117 & Ö.Güner
Senecio vulgaris L., 1, 05.04.2019, Ö.Çetin 2230 & Ö.Güner
Sonchus asper (L.) Hill. subsp. *glaucescens* (Jord.) Ball, 7, 23.02.2019, Ö. Güner 3419 & Ö.Çetin
Tragopogon buphthalmoides (DC) Boiss., Ir.-Tur., 9, 06.04.2019, Ö.Çetin 2259 & Ö.Güner
Tragopogon porrifolius L. subsp. *longirostris* (Sch.Bip.) Greuter, 9, 25.04.2019, Ö.Çetin 2292 & Ö.Güner
Urospermum picroides (L.) Scop. ex F.W.Schmidt, Medit., 1, 7, 04.04.2019, Ö.Çetin 2207 & Ö.Güner
BORAGINACEAE

Alkanna areolata Boiss. var. *areolata*, E. Medit., Literature
Alkanna macrosiphon Boiss. & Heldr., **End.**, Literature
Alkanna tubulosa Boiss., E. Medit., 9, 22.02.2019, Ö. Güner 3410 & Ö.Çetin
Anchusa azurea Mill. var. *azurea*, Literature
Anchusa hybrida Ten, Medit., Literature
Buglossoides arvensis (L.) I.M. Johnst., 8, 05.04.2019, Ö.Güner 3451 & Ö.Çetin
Echium parviflorum Moench, Medit., 1, 15, 26.05.2018, Ö.Çetin 2042 & Ö.Güner
Echium plantagineum L., Medit., 6, 05.04.2019, Ö.Çetin 2234 & Ö.Güner
Heliotropium hirsutissimum Grauer, E. Medit., 1, 25.05.2018, Ö.Çetin 2021 & Ö.Güner
Hormuzakia aggregata (Lehm.) Guşul., Medit., 15, 15.03.2019, Ö. Güner 3424 & Ö.Çetin
Myosotis ramosissima Rochel, 18, 01.12.2018, Ö. Güner 3425 & Ö.Çetin
Onosma frutescens Lam., E. Medit., 2, 7, 9, 10, 22.02.2019, Ö.Çetin 2081 & Ö.Güner
BRASSICACEAE
Alyssum strigosum Banks & Sol, 1, 04.04.2019, Ö.Çetin 2174 & Ö.Güner
Arabis verna (L.) R.Br., Medit., 8, 05.04.2019, Ö.Çetin 2254 & Ö.Güner
Biscutella didyma L., 1, 7, 15.03.2019, Ö.Çetin 2138 & Ö.Güner
Bunias erucago L., 1, 25.05.2018, Ö.Çetin 2000 & Ö.Güner
Cakile maritima Scop, 15, 25.05.2018, Ö.Çetin 2003 & Ö.Güner
Capsella bursa-pastoris (L.) Medik, 1, 8, 25.05.2018, Ö.Çetin 2017 & Ö.Güner
Cardamine hirsuta L., 8, 15, 15.03.2019, Ö.Çetin 2134 & Ö.Güner
Clypeola jonthlasi L., 7, 15.03.2019, Ö.Çetin 2135 & Ö.Güner
Draba verna L., 8, 22.02.2019, Ö.Çetin 2093 & Ö.Güner
Malcolmia chia (L.) DC., Medit., 1, 9, 18, 04.04.2019, Ö.Çetin 2184 & Ö.Güner
Maresia nana (DC) Batt, 15, 24.02.2019, Ö.Çetin 2122 & Ö.Güner
Microthlaspi perfoliatum (L.) F.K.Mey, 8, 22.02.2019, Ö.Çetin 2092 & Ö.Güner
Ricotia carnosula Boiss. & Heldr., E. Medit., 1, 7, 8, 9, 11, 12, 13, 22.02.2019, Ö.Çetin 2086 & Ö.Güner
Sinapis arvensis L., 15, 25.05.2019, Ö.Çetin 1988 & Ö.Güner
CAMPANULACEAE
Campanula aktascii Aytaç & H.Duman, E. Medit., **End.**, 19, 24.04.2019, Ö.Çetin 2278 & Ö.Güner
Campanula delicatula Boiss., E. Medit., 1, Ö.Çetin & Ö.Güner
Campanula drabifolia Sibth. & Sm., E. Medit., 2, 05.04.2019, Ö.Çetin 2223 & Ö.Güner
Campanula hagielia Boiss., E. Medit., 1, 27.04.2019, Ö.Çetin 2321 & Ö.Güner
Campanula lycica Kit Tan & Sorger, **End.**, Literature

Campanula podocarpa Boiss., E. Medit, Literature

CAPPARACEAE

Capparis spinosa L., 8, 25.05.2018, Ö.Çetin 1978 &Ö.Güner

CAPRIFOLIACEAE

Knautia integrifolia (L.) Bert., 9, 25.04.2019, Ö.Çetin 2291 &Ö.Güner

Scabiosa rotata Bieb., 9, 26.05.2018, Ö.Çetin 2028 &Ö.Güner

Valerianella discoidea (L.) Loisel., Medit., 1, 04.04.2019, Ö.Çetin 2183 &Ö.Güner

CARYOPHYLLACEAE

Arenaria luschanii McNeill, E. Medit., **End.**, 1, 11, 13, 26.04.2019, Ö.Çetin 2302 &Ö.Güner

Arenaria pamphylica Boiss. & Heldr. subsp. *pamphylica*, Medit., **End.**, Literature

Bufonia calyculata Boiss. & Balansa, **End.**, Literature

Dianthus tripunctatus Sm., Medit., 1, 26.05.2018, Ö.Çetin 2040 &Ö.Güner

Minuartia hybrida (Vill.) Schischk. subsp. *hybrida*, 9, 05.04.2019, Ö.Çetin 2253 &Ö.Güner

Minuartia mesogitana (Boiss.) Hand.-Mazz. subsp. *mesogitana*, Medit., Literature

Moenchia coerulea Boiss., Literature

Petrorhagia dubia (Raf.) G.López&Romo, 1, 8, 05.04.2019, Ö.Çetin 2247 &Ö.Güner

Silene behen L., 1, 5, 04.04.2019, Ö.Çetin 2203 &Ö.Güner

Silene delicatula Boiss. subsp. *pisidica* Coode&Cullen, **End.**, Literature

Silene discolor Sibth. & Sm, E. Medit., 15, 24.02.2019, Ö.Çetin 2126 &Ö.Güner

Silene heldreichii Boiss., E.Medit., 3, 25.04.2019, Ö.Çetin 2296 &Ö.Güner

Silene nocturna L., Medit., 7, 05.04.2019, Ö.Güner 3452 &Ö.Çetin

Silene vulgaris (Moench) Garcke, 1, 5, 05.04.2019, Ö.Çetin 2227 &Ö.Güner

Stellaria media (L.) Vill., 9, 22.02.2019, Ö.Çetin 2091 &Ö.Güner

CISTACEAE

Cistus creticus L., Medit., 1, 5, 6, 25.05.2018, Ö.Çetin 2002 &Ö.Güner

Cistus salviifolius L., 5, 6, 26.05.2018, Ö.Çetin 2043 &Ö.Güner

Fumana arabica (L.) Spach, 9, 06.04.2019, Ö.Çetin 2257 &Ö.Güner

Fumana thymifolia (L.) Spach, 11, 26.04.2019, Ö.Çetin 2303 &Ö.Güner

CONVOLVULACEAE

Convolvulus arvensis L., 1, 21.07.2019, Ö.Çetin 2351 &Ö.Güner

Convolvulus pentapetaloides L., Medit., 12, 27.04.2019, Ö.Çetin 2331 &Ö.Güner

Convolvulus siculus L., Medit., 1, 04.04.2019, Ö.Çetin 2212 &Ö.Güner

Ipomoea purpurea (L.) Roth, 7, 15.03.2019, Ö. Güner 3426 &Ö.Çetin

CRASSULACEAE

Rosularia globulariifolia (Fenzl) Berger, E. Medit., **End.**, 1, 04.04.2019, Ö.Güner 3444 &Ö.Çetin

Sedum hispanicum L., Ir-Tur., 11, 23.04.2019, Ö.Çetin 2304 &Ö.Güner

Sedum litoreum Guss., Medit., 10, 26.04.2019, Ö.Çetin 2271 &Ö.Güner

Sedum pallidum M.Bieb., 9, 15.03.2019, Ö. Güner 3428 &Ö.Çetin

Sedum rubens L., Medit., 8, 15.03.2019, Ö. Güner 3427 &Ö.Çetin

Umbilicus horizontalis DC., Medit., 7, 8, 9, 16.11.2018, Ö. Güner 3408 &Ö.Çetin

DIOSCOREACEAE

Dioscorea communis (L.) Caddick&Wilkin, 3, 04.04.2019, Ö.Güner 3442 &Ö.Çetin

ERICACEAE

Arbutus andrachne L., 2, 4, 25.05.2018, Ö.Çetin 2001 &Ö.Güner

Erica bocquetii (Peşmen) P.F.Stevens, Medit., **End.**, 2, 15.03.2019, Ö.Çetin 2152 &Ö.Güner

EUPHORBIACEAE

Chrozophora tinctoria (L.) A.Juss., 8, 25.05.2018, Ö.Çetin 1977

Euphorbia characias L. subsp. *wulfenii* (Hoppe&W.D.J.Koch) Radcl.-Sm., E. Medit., 1, 7, 8, 9, 17, 25.05.2018, Ö.Çetin 1985 &Ö.Güner

Euphorbia dendroides L., Medit., 16, 05.04.2019, Ö.Çetin 2237 &Ö.Güner

Euphorbia falcata L., 7, 04.04.2019, Ö.Çetin 2210 &Ö.Güner

Euphorbia helioscopia L., 7, 2, 05.04.2019, Ö.Çetin 2240 &Ö.Güner

Euphorbia peplus L., 7, 05.04.2019, Ö.Çetin 2238 &Ö.Güner

Euphorbia stricta L., 1, 15.03.2019, Ö.Çetin 2132 &Ö.Güner

Mercurialis annua L., 18, 25.05.2018, Ö.Çetin 1996 &Ö.Güner

Ricinus communis L., 1, 25.05.2018, Ö.Çetin 1999 &Ö.Güner

FABACEAE

Anagyris foetida L., Medit., 7, 25.05.2018, Ö.Çetin 1993 &Ö.Güner

Anthyllis vulneraria L. subsp. *praepropera* (Kerner) Bornm., Medit., 7, 06.04.2019, Ö.Çetin 2261 &Ö.Güner

Astragalus hamosus L., 11, 26.04.2019, Ö.Çetin 2309 &Ö.Güner

Bituminaria bituminosa (L.) C.H.Stirt., Medit., 1, 25.05.2018, Ö.Çetin 1998 &Ö.Güner

Calicotome villosa (Poir.) Link, Medit., 9, 25.05.2018, Ö.Çetin 1995 &Ö.Güner

Ceratonia siliqua L., Medit., 1, 2, 3, 9, 11, 25.05.2018, Ö.Çetin 1990 &Ö.Güner

Genista acanthoclada DC., E. Medit., 1, 2, 4, 5, 6, 7, 8, 9, 12, 27.05.2018, Ö.Çetin 2045 &Ö.Güner

Hymenocarpus circinnatus (L.) Savi, 7, 27.05.2018, Ö.Çetin 2046 &Ö.Güner

Lathyrus aphaca L., 3, 25.04.2019, Ö.Güner 3468 &Ö.Çetin

- Lathyrus setifolius* L., *Medit.*, 5, 23.02.2019, Ö.Çetin 2114 & Ö.Güner
Lotus ornithopodioides L., *Medit.*, 7, 05.04.2019, Ö.Güner 3469 & Ö.Çetin
Lupinus angustifolius L., 7, 15.03.2019, Ö. Güner 3429 & Ö.Çetin
Medicago arabica (L.) Huds., 1, 04.04.2019, Ö.Güner 3445 & Ö.Çetin
Medicago brachycarpa M.Bieb., Ir-Tur., 2, 27.04.2019, Ö.Güner 3503 & Ö.Çetin
Medicago carica (Hub.-Mor.) E.Small, *Medit.*, **End.**, 18, 27.04.2019, Ö.Çetin 2334 & Ö. Güner
Medicago disciformis DC. *Medit.*, 2, 28.04.2019, Ö.Güner 3492 & Ö.Çetin
Medicago granadensis Willd., E. *Medit.*, 1, 06.04.2019, Ö.Çetin 2263 & Ö.Güner
Medicago littoralis Rohde ex Lois., Literature
Medicago marina L., 15, 24.02.2019, Ö.Çetin 2123 & Ö.Güner
Medicago minima (L.) Bartal., Literature
Medicago orbicularis (L.) Bartal., 1, 15, 04.04.2019, Ö.Çetin 2193 & Ö.Güner
Medicago rigidula (L.) All., 11, 26.04.2019, Ö.Güner 3482 & Ö.Çetin
Melilotus elegans Salzm. ex Ser., *Medit.*, Literature
Melilotus indicus (L.) Lam., *Medit.*, 14, 26.04.2019, Ö.Çetin 2301
Melilotus officinalis (L.) Desr., 9, 25.04.2019, Ö.Çetin 2300 & Ö.Güner
Onobrychis caput-galli (L.) Lam., *Medit.*, 2, 28.04.2019, Ö.Güner 3501 & Ö.Çetin
Ononis natrix L., *Medit.*, 15, 27.04.2019, Ö.Güner 3487 & Ö.Çetin
Ononis reclinata L., *Medit.*, 2, 28.04.2019, Ö.Güner 3489 & Ö.Çetin
Pisum fulvum Sibth. & Sm., E. *Medit.*, 1, 04.04.2019, Ö.Güner 3446 & Ö.Çetin
Pisum sativum L. subsp. *elatius* Aschers. & Graebn. var. *elatius*, *Medit.*, 16, 06.04.2019, Ö.Çetin 2258 & Ö.Güner
Scorpiurus subvillosus L. var. *subvillosus*, 1, 24.04.2019, Ö.Çetin 2281 & Ö.Güner
Securigera varia (L.) Lassen, E. *Medit.*, 1, 05.04.2019, Ö.Çetin 2236 & Ö.Güner
Spartium junceum L., *Medit.*, 16, 25.05.2018, Ö.Çetin 1984 & Ö.Güner
Tetragonolobus requienii (Sanguin.) Sanguin., 2, 27.04.2019, Ö.Çetin 2325 & Ö.Güner
Trifolium angustifolium L., 9, 27.04.2019, Ö.Çetin 2328 & Ö.Güner
Trifolium campestre Schreb., 1, 27.04.2019, Ö.Çetin 2327 & Ö.Güner
Trifolium clypeatum L., E. *Medit.*, 7, 15.03.2019, Ö.Çetin 2137 & Ö.Güner
Trifolium grandiflorum Schreb., E. *Medit.*, 9, 06.04.2019, Ö.Çetin 2266 & Ö.Güner
Trifolium hirtum All., *Medit.*, 1, 27.04.2019, Ö.Çetin 2326 & Ö.Güner
Trifolium pilulare Boiss., 7, 21.07.2019, Ö.Çetin 2355 & Ö.Güner
Trifolium purpureum Lois., *Medit.*, 1, 28.04.2019, Ö.Güner 3490 & Ö.Çetin
Trifolium stellatum L., 1, 7, 04.04.2019, Ö.Çetin 2176 & Ö.Güner
Trifolium tomentosum L., 7, 05.04.2019, Ö.Çetin 2221 & Ö.Güner
Trigonella cariensis Boiss., *Medit.*, 7, 18, 17.05.2019, Ö.Çetin 2339 & Ö.Güner
Trigonella monspeliaca L., *Medit.*, 8, 27.04.2019, Ö.Güner 3504 & Ö.Çetin
Trigonella spicata Sibth. & Sm., E. *Medit.*, 9, 06.04.2019, Ö.Güner 3463 & Ö.Çetin
Tripodion tetraphyllum (L.) Fourr., *Medit.*, 9, 06.04.2019, Ö.Çetin 2261 & Ö.Güner
Vicia faba L., 1, 23.02.2019, Ö. Güner 3420 & Ö.Çetin
Vicia hybrida L., 7, 15, 15.03.2019, Ö. Güner 3430 & Ö.Çetin
FAGACEAE
Quercus aucheri Jaub. & Spach, E. *Medit.*, **End.** 8, 25.05.2018, Ö.Çetin 2019 & Ö.Güner
Quercus coccifera L., *Medit.*, 8, 25.05.2018, Ö.Çetin 2018 & Ö.Güner
GENTIANACEAE
Blackstonia perfoliata (L.) Huds. subsp. *perfoliata*, 11, 24.04.2019, Ö.Çetin 2284 & Ö.Güner
Centaurium erythraea Rafn. subsp. *rhodense* (Boiss. & Reut.) Melderis, *Medit.*, 9, 10, 25.05.2018, Ö.Çetin 2026
Centaurium pulchellum (Sw.) Druce, 9, 24.04.2019, Ö.Çetin 2285 & Ö.Güner
GERANIACEAE
Erodium acaule (L.) Becherer & Thell., *Medit.*, 9, 22.02.2019, Ö.Çetin & Ö.Güner
Erodium ciconium (L.) L Her., 9, 16.03.2019, Ö. Güner 3439 & Ö.Çetin
Erodium cicutarium (L.) L Hér., 15, 16.03.2019, Ö.Güner 3502 & Ö.Çetin
Erodium gruinum (L.) L Hér., E. *Medit.*, 7, 23.02.2019, Ö.Güner 3503 & Ö.Çetin
Erodium malacoides (L.) L Her, *Medit.*, 8, 15.03.2019, Ö.Güner 3504 & Ö.Çetin
Geranium lucidum L., 1, 15.03.2019, Ö. Güner 3431 & Ö.Çetin
Geranium molle L., 1, 16.03.2019, Ö. Güner 3433 & Ö.Çetin
Geranium purpureum Vill., 1, 7, 9 15.03.2019, Ö. Güner 3432 & Ö.Çetin
LAMIACEAE
Ajuga bombycina Boiss., E. *Medit.*, **End.**, 8, 16.11.2018, Ö.Güner 3464 & Ö.Çetin
Ajuga chamaepitys (L.) Schreb. subsp. *chia* (Schreb.) Arcang., 8, 16.11.2018, Ö. Güner 3409 & Ö.Çetin
Ajuga orientalis L., 7, 23.02.2019, Ö. Güner 3421 & Ö.Çetin
Ballota glandulosissima Hub-Mor. & Patzak, E. *Medit.*, **End.**, 5, 13, 22.07.2019, Ö.Çetin 2359
Clinopodium suaveolens (Sm.) Kuntze, Euro-Sib., 17, 02.11.2018, Ö. Güner 3408 & Ö.Çetin

- Lamium amplexicaule* L., 8, 9, 23.02.2019, Ö.Çetin 2109 & Ö.Güner
Lamium moschatum Mill. subsp. *moschatum*, 1, 17.05.2019, Ö.Çetin 2344
Marrubium vulgare L., Medit., 2, 15.03.2019, Ö. Güner 3434 & Ö.Çetin
Mentha longifolia (L.) L. subsp. *typhoides* (Briq.) Harley, 4, 21.07.2019, Ö.Çetin 2357
Micromeria myrtifolia Boiss. & Hohen., 1, 9, 26.05.2018, Ö.Çetin 2036
Origanum onites L., E. Medit., 1, 2, 7, 25.05.2018, Ö.Çetin 1979
Phlomis lycia D. Don, E. Medit., 1, 7, 15.03.2019, Ö.Çetin 2136
Prasium majus L., Medit., 1, 7, 23.02.2019, Ö.Çetin 2097
Rosmarinus officinalis L., 7, 1, 15.03.2019, Ö. Güner 3435 & Ö.Çetin
Salvia fruticosa Mill., E. Medit., 1, 7, 15.03.2019, Ö. Güner 3436 & Ö.Çetin
Salvia verbenaca L., Medit., 7, 8, 05.04.2019, Ö.Çetin 2249
Salvia viridis L., 9, 16.03.2019, Ö.Çetin 2162
Satureja thymbra L., E. Medit., 9, 06.04.2019, Ö.Çetin 2256
Scutellaria brevibracteata Stapf subsp. *brevibracteata*, E. Medit., **End.**, Literature
Sideritis albiflora Hub.-Mor., E. Medit., **End.**, 3, 17.05.2019, Ö. Güner 3494 & Ö.Çetin
Sideritis romana L. subsp. *curvidens* (Stapf) Holmboe, E. Medit., 1, 7, 04.04.2019, Ö.Çetin 2179
Stachys arvensis (L.) L., 6, 7, 15, 15.03.2019, Ö. Güner 3495 & Ö.Çetin
Stachys bombycina Boiss., E. Medit., **End.**, 3, 22.07.2019, Ö.Çetin 2356
Stachys cretica L. subsp. *smyrnaea* Rech.f., E. Medit., Literature
Stachys germanica L., E. Medit., Literature
Stachys spinulosa Sm., E. Medit., 1, 04.04.2019, Ö. Güner 3447 & Ö.Çetin
Teucrium brevifolium Schreber, E. Medit., 9, 10, 22.02.2019, Ö.Çetin 2080
Teucrium divaricatum Sieber, Medit., 2, 25.05.2018, Ö.Çetin 2031
Teucrium montbretii Benth. subsp. *pamphylicum* P.H. Davis, Medit., **End.**, 7, 02.11.2018, Ö. Güner 3621 & Ö.Çetin
Teucrium polium L., 2, 25.05.2018, Ö.Çetin 2032
Thymbra spicata L., 2, 25.05.2018, Ö.Çetin 2023
Vitex agnus-castus L., Medit., 10, 25.05.2018, Ö.Çetin 1980
LAURACEAE
Laurus nobilis L., Medit., 13, 26.04.2019, Ö. Güner 3483 & Ö.Çetin
LINACEAE
Linum strictum L., 11, 26.04.2019, Ö.Çetin 2312
Linum trigynum L., Medit., 9, 24.04.2019, Ö.Çetin 2279
LYTHRACEAE
Lythrum maritimum Kunth, 6, 21.07.2019, Ö.Çetin 2358
Punica granatum L., 6, 25.04.2019, Ö. Güner 3470 & Ö.Çetin
MALVACEAE
Alcea striata (DC) Alef., 3, 25.04.2019, Ö. Güner 3471 & Ö.Çetin
Althaea hirsuta L., 18, 17.05.2019, Ö. Güner 3496 & Ö.Çetin
Lavatera punctata All., 7, 17.05.2019, Ö.Çetin 2338
Malope malacoides L., E. Medit., L.
Malva cretica Cav., Medit., 9, 24.04.2019, Ö. Güner 3467 & Ö.Çetin
Malva linnaei M.F. Ray, 6, 26.04.2019, Ö. Güner 3484 & Ö.Çetin
Malva nicaeensis All., 6, 05.04.2019, Ö. Güner 3453 & Ö.Çetin
MORACEAE
Ficus carica L., Medit., 6, 25.04.2019, Ö. Güner 3472 & Ö.Çetin
Morus alba L., 6, 25.04.2019, Ö. Güner 3473 & Ö.Çetin
MYRTACEAE
Myrtus communis L., 15, 24.02.2019, Ö. Güner 3454 & Ö.Çetin
OLEACEAE
Olea europaea L., Medit., 1, 8, 25.05.2018, Ö. Çetin 1976
Phillyrea latifolia L., 1, 01.11.2018, Ö. Güner 3403 & Ö. Çetin.
OROBANCHACEAE
Orobanche caryophyllacea Sm., 1, 04.04.2019, Ö.Çetin 2206
Orobanche ramosa L., 1, 04.04.2019, Ö.Çetin 2216
Parentucellia latifolia (L.) Caruel, 8, 15.03.2019, Ö.Çetin 2149
Parentucellia viscosa (L.) Caruel, Medit., 7, 05.04.2019, Ö. Güner 3506 & Ö.Çetin
OXALIDACEAE
Oxalis pes-caprae L., 9, 16.03.2019, Ö. Güner 3440 & Ö.Çetin
PAPAVERACEAE
Fumaria macrocarpa Parl., 1, 04.04.2019, Ö.Çetin 2171
Fumaria capreolata L., 1, 04.04.2019, Ö.Çetin
Papaver gracile Aucher ex Boiss., Medit., 3, 25.04.2019, Ö.Çetin 2297
Papaver rhoeas L., 1, 25.05.2018, Ö.Çetin 1975
PHYLLANTHACEAE
Andrachne telephioides L., 9, 24.04.2019, Ö.Çetin 2288
PLANTAGINACEAE
Cymbalaria longipes (Boiss. & Heldr.) A. Chev., E. Medit., 5, 23.02.2019, Ö.Çetin 2119
Kickxia commutata (Rchb.) Fritsch subsp. *commutata*, Medit., 9, 26.05.2018, Ö.Çetin 2035
Misopates orontium (L.) Raf., 7, 05.04.2019, Ö. Güner 3455 & Ö.Çetin
Plantago cretica L., E. Medit., 8, 05.04.2019, Ö.Çetin 2252
Plantago lagopus L., Akd, 8, 16.03.2019, Ö.Çetin 2158

- Plantago lanceolata* L., 7, 15.03.2019, Ö. Güner 3437 & Ö.Çetin
Plantago major L. subsp. *intermedia* (Gilib.) Lange, 1, 15.03.2019, Ö. Güner 3438 & Ö.Çetin
Plantago scabra Moench, 1, 04.04.2019, Ö.Çetin 2175
Veronica cymbalaria Bodard, *Medit.*, 9, 16.03.2019, Ö.Çetin 2167
Veronica hederifolia L., 9, 22.02.2019, Ö. Güner 3411 & Ö.Çetin
Veronica stamatiadae M.A.Fisch. & Greuter, *Medit.*, 9, 16.03.2019, Ö.Çetin 2166
Veronica syriaca Roem. & Schult., *Medit.*, 8, 05.04.2019, Ö. Güner 3456 & Ö.Çetin
PLATANACEAE
Platanus orientalis L., 2, 26.05.2018, Ö.Çetin 1974
PLUMBAGINACEAE
Limonium effusum (Boiss.) Kuntze, *E. Medit.*, **End.**, Literature
POLYGALACEAE
Polygala supina Schreb, 3, 25.04.2019, Ö.Çetin 2295
POLYGONACEAE
Polygonum aviculare L., 11, 26.04.2019, Ö. Güner 3508 & Ö.Çetin
Polygonum equisetiforme Sibth. & Sm., 16, 15.11.2018, Ö. Güner 3457 & Ö.Çetin
Rumex crispus L., 1, 25.05.2018, Ö.Çetin 1971
Portulaca oleracea L., 1, 25.05.2018, Ö.Çetin 1972
PRIMULACEAE
Anagallis arvensis L., 1, 04.04.2019, Ö.Çetin 2213
Asterolinon linum-stellatum (L.) Duby, *Medit.*, 8, 15.03.2019, Ö. Güner 3458 & Ö.Çetin
Cyclamen graecum Link, *Medit.*, 1, 5, 6, 7, 8, 9, 10, 11, 01.11.2018, Ö.Çetin 2054
RANUNCULACEAE
Anemone coronaria L., 1, 5, 6, 7, 8, 9, 11, 23.02.2019, Ö.Çetin 2118
Clematis cirrhosa L., 4, 10.11.2018, Ö.Çetin 2070
Clematis vitalba L., 8, 25.05.2018, Ö.Çetin 1970
Ranunculus chius DC., *E. Medit.*, 6, 26.04.2019, Ö.Çetin 2310
Ranunculus constantinopolitanus (DC.) d'Urv., Literature
Ranunculus peltatus Schrank subsp. *fucoides* (Frey) Muñoz Garm., 6, 23.02.2019, Ö.Çetin 2101
Staphisagria macrosperma Spach, *Medit.*, 8, 21.07.2019, Ö.Çetin 2353
RHAMNACEAE
Rhamnus lycioides L. subsp. *oleoides* (L.) Jahandiez & Maire, 1, 22.02.2019, Ö. Güner 3413 & Ö.Çetin
ROSACEAE
Amygdalus graeca Lindl., 9, 22.02.2019, Ö. Güner 3412 & Ö.Çetin
Sanguisorba minor L., 7, 25.05.2018, Ö.Çetin 1973
Sarcopoterium spinosum (L.) Spach, 4, 25.05.2018, Ö.Çetin 1982
RUBIACEAE
Crucianella angustifolia L., *Medit.*, Literature
Crucianella latifolia L., *Medit.*, 1, 04.04.2019, Ö.Çetin 2218
Galium aparine L., 2, 15.03.2019, Ö.Çetin 2153
Galium brevifolium Sm. subsp. *brevifolium*, **End.**, Literature
Galium graecum L., *E. Medit.*, 1, 10.11.2018, Ö.Çetin 2069
Galium pseudocapitatum Hub.-Mor. ex Ehrend. & Schönb.-Tem., *E. Medit.*, **End.**, 1, 27.05.2018, Ö.Çetin 2048
Galium setaceum Lam., 1, 04.04.2019, Ö.Çetin 2190
Rubia rotundifolia Banks & Sol., *E. Medit.*, 1, 06.04.2019, Ö.Çetin 2264
Rubia tenuifolia d'Urv., 9, 04.04.2019, Ö.Çetin 2204
Sherardia arvensis L., *Medit.*, 1, 8, 9, 04.04.2019, Ö.Çetin 2187
Valantia hispida L., *Medit.*, 8, 9, 16.03.2019, Ö.Çetin 2165
RUTACEAE
Ruta chalepensis L., 1, 13, 27.04.2019, Ö.Çetin 2333
SCROPHULARIACEAE
Scrophularia lucida L., *Medit.*, 16, 16.03.2019, Ö.Çetin 2164
Scrophularia peregrina L., *Medit.*, 1, 7, 15.03.2019, Ö.Çetin 2130
Scrophularia pinardii Boiss., *E. Medit.*, 5, 7, 23.02.2019, Ö.Çetin 2113
Verbascum levanticum I.K.Ferguson, *E. Medit.*, 3, 27.04.2019, Ö.Çetin 2332
Verbascum sinuatum L., *Medit.*, 1, 25.05.2018, Ö.Çetin 2033
SMILACACEAE
Smilax aspera L., 3, 25.05.2018, Ö.Çetin 1983
Smilax excelsa L., 3, 25.04.2019, Ö. Güner 3474 & Ö.Çetin
SOLANAECAE
Hyoscyamus aureus Bertol., *E. Medit.*, 3, 25.04.2019, Ö.Çetin 2298
Mandragora autumnalis Bertol., *Medit.*, 9, 22.02.2019, Ö.Çetin 2084 & Ö. Güner
Solanum americanum Mill., 9, 25.05.2018, Ö.Çetin 2039
STYRACACEAE
Styrax officinalis L., 1, 04.04.2019, Ö. Güner 3448 & Ö.Çetin
THYMELAEACEAE
Daphne gnidioides Jaub. & Spach, 1, 2, 16.11.2018, Ö.Çetin 2075
Thymelaea hirsuta (L.) Endl., *Medit.*, 15, 24.02.2019, Ö.Çetin 2125
URTICACEAE
Parietaria lusitanica L., *Medit.*, 7, 18, 25.04.2019, Ö.Çetin 2290
Urtica pilulifera L., 9, 16.03.2019, Ö.Çetin 2159
ZYGOPHYLLACEAE
Tribulus terrestris L., 7, 16.11.2018, Ö.Çetin 2074
MONOCOTYLEDONEAE
AMARYLLIDACEAE

- Allium amethystinum* Tausch, *Medit.*, 7, 17.05.2019, Ö.Güner 3493 & Ö.Çetin
Allium junceum Sm. subsp. *junceum*, *E. Medit.*, 7, 24.04.2019, Ö.Çetin 2282 & Ö.Güner
Allium myrianthum Boiss., *Ir.-Tur.*, 10, 24.04.2019, Ö.Güner 3465 & Ö.Çetin
Allium nigrum L., *Medit.*, 6, 05.04.2019, Ö.Güner 3450 & Ö.Çetin
Allium sandrasicum Kollmann, Özhatay & Bothmer, *E. Medit.*, **End.**, Literature
Allium scorodoprasum L. subsp. *rotundum* (L.) Stearn, 9, 24.04.2019, Ö.Güner 3466 & Ö.Çetin
Allium subhirsutum L., 7, 15.03.2019, Ö. Güner 3422 & Ö.Çetin
Narcissus serotinus L., 17, 23.02.2019, Ö. Güner 3413 & Ö.Çetin
Narcissus tazetta L., 16, 16.11.2018, Ö.Çetin 2072 & Ö.Güner
ARACEAE
Arum dioscoridis Sm. var. *dioscoridis*, *E. Medit.*, 1, 25.05.2018, Ö.Çetin 1989 & Ö.Güner
Biarum pyrami (Schott) Engl., 2, 01.11.2018, Ö.Çetin 2059 & Ö.Güner
Arisarum vulgare O.Targ.Tozz, *Medit.*, 16, 16.11.2018 Ö.Çetin 2073 & Ö.Güner
Dracunculus vulgaris Schott, *E. Medit.*, 6, 25.05.2018, Ö.Çetin 1987 & Ö.Güner
ASPARAGACEAE
Asparagus acutifolius L., *Medit.*, 6, 25.05.2018, Ö.Çetin 1986 & Ö.Güner
Bellevalia trifoliata (Ten.) Kunth, *Medit.*, 7, 15.03.2019, Ö.Güner 3423 & Ö.Çetin
Drimia maritima (L.) Stearn, 1, 10, 25.05.2018, Ö.Çetin 1997 & Ö.Güner
Muscari comosum (L.) Mill., *Medit.*, 8, 05.04.2019, Ö.Çetin 2251 & Ö.Güner
Muscari parviflorum Desf., *Medit.*, 6, 02.11.2018, Ö.Güner 3404 & Ö.Çetin
Ornithogalum narbonense L., *Medit.*, 14, 26.04.2019, Ö.Güner 3473 & Ö.Çetin
Ornithogalum pyrenaicum L., 11, 23.02.2019, Ö.Güner 3414 & Ö.Çetin
Ornithogalum umbellatum L., 10, 23.02.2019, Ö.Güner 3415 & Ö.Çetin
Prospero autumnale (L.) Speta, *Medit.*, 9, 01.11.2018, Ö.Çetin 2058 & Ö.Güner
Ruscus aculeatus L., 18, 25.05.2018, Ö.Çetin 1994 & Ö.Güner
COLCHICACEAE
Colchicum stevenii Kunth, *E. Medit.*, 1, 2, 9, 02.11.2018, Ö.Çetin 2062 & Ö.Güner
CYPERACEAE
Bolboschoenus maritimus (L.) Palla subsp. *maritimus*, 11, 26.04.2019, Ö.Güner 3474 & Ö.Çetin
Carex remota L. subsp. *remota*, 11, 26.04.2018, Ö.Güner 3475 & Ö.Çetin
IRIDACEAE
Crocus cancellatus Herb. subsp. *lycius* B.Mathew, *E. Medit.*, **End.**, 4, 10.11.2018, Ö.Çetin 2071 & Ö.Güner
Gladiolus italicus Mill., 1, 04.04.2019, Ö.Güner 3441 & Ö.Çetin
Gynandris sisyrinchium (L.) Parl, 1, 04.04.2019, Ö.Güner 3442 & Ö.Çetin
Romulea bulbocodium (L.) Sebast. & Mauri, Literature
Romulea tempskyana Freyn, *E. Medit.*, 9, 15, 22.02.2019, Ö.Çetin 2083 & Ö.Güner
JUNCACEAE
Juncus heldreichianus T.Marsson ex Parl., *E. Medit.*, 11, 26.04.2019, Ö.Güner 3476 & Ö.Çetin
LILIACEAE
Fritillaria elwesii Boiss., *E. Medit.*, 1, 23.02.2019, Ö.Çetin 2106 & Ö.Güner
Gagea fibrosa (Desf.) Schult. & Schult.f., 8, 23.02.2019, Ö.Çetin 2112 & Ö.Güner
Gagea graeca (L.) Irmsch., *E. Medit.*, 8, 18, 15.03.2019, Ö.Çetin 2150 & Ö.Güner
Gagea peduncularis (C.Presl) Pascher, *Akd.*, 9, 23.02.2019, Ö. Güner 3415 & Ö.Çetin
ORCHIDACEAE
Anacamptis pyramidalis (L.) Rich., 1, 04.04.2019, Ö.Çetin 2195 & Ö.Güner
Barlia robertiana (Loisel.) Greuter, *Medit.*, Literature
Ophrys argolica H.Fleischm., 18, 23.02.2019, Ö.Çetin 2111 & Ö.Güner
Ophrys holoserica (Burm.f.) Greuter, 10, 24.04.2019, Ö.Çetin 2274 & Ö.Güner
Ophrys lycia Renz & Taubenheim, *Medit.*, **End.**, Literature
Orchis anatolica Boiss., *E. Medit.*, 8, 15.03.2019, Ö.Çetin 2147 & Ö.Güner
Orchis coriophora L, 10, 24.04.2019, Ö. Çetin 2273 & Ö.Güner
Orchis laxiflora Lam. subsp. *laxiflora*, *Medit.*, Literature
Orchis mascula (L.) L. subsp. *pinetorum* (Boiss. & Kotschy) G.Camus, *E. Medit.*, Literature
Orchis papilionacea L., 7, 23.02.2019, Ö.Çetin 2098 & Ö.Güner
Orchis quadripunctata, Cyr. ex Ten., *E. Medit.*, 4, 26.04.2019, Ö.Çetin 2306 & Ö.Güner
Orchis sancta L, *E. Medit.*, 12, 25.05.2019, Ö.Çetin 2314 & Ö.Güner
Serapias bergonii E.G.Camus, *Medit.*, 12, 26.04.2019, Ö.Güner 3477 & Ö.Çetin
Serapias orientalis (Greuter) H.Baumann & Künkele, *Medit.*, Literature
POACEAE
Aegilops umbellulata Zhuk., *Ir.-Tur.*, 12, 26.04.2019, Ö.Güner 3478 & Ö.Çetin
Aeluropus littoralis (Gouan) Parl., 12, 26.04.2019, Ö.Güner 3479 & Ö.Çetin
Alopecurus myosuroides Huds., *Euro-Sib.*, 1, 02.11.2018, Ö. Güner 3405 & Ö.Çetin
Avena barbata Pottex Link, 3, 17.05.2019, Ö.Güner 3498 & Ö.Çetin
Brachypodium distachyon (L.) P.Beauv., *Medit.*, 1, 04.04.2019, Ö.Güner 3443 & Ö.Çetin
Briza maxima L., 10, 24.04.2019, Ö.Çetin 2277 & Ö.Güner

Briza minor L., 9, 25.05.2018, Ö.Çetin 1992 &Ö.Güner
Bromus diandrus Roth, 12, 26.04.2019, Ö.Güner 3480
&Ö.Çetin
Bromus japonicus Thunb., Literature
Bromus tectorum L., Literature
Chrysopogon gryllus (L.) Trin., 6, 02.11.2018, Ö. Güner
3407 &Ö.Çetin
Cynosurus effusus Link, Literature
Dactylis glomerata L. subsp. *hispanica* (Roth) Nyman,
Literature
Henrardia persica (Boiss.) C.E.Hubb., Literature
Lolium perenne L., Literature
Oryzopsis miliacea (L.) Asch. &Schweinf., 6,
10.11.2018, Ö. Güner 3408 &Ö.Çetin
Phleum bertolonii DC., 9, 02.11.2018, Ö.Güner 3406
&Ö.Çetin

Phragmites australis (Cav.) Trin. exSteud., 15,
28.04.2019, Ö.Güner 3491 &Ö.Çetin
Poa bulbosa L., Literature
Polypogon monspeliensis (L.) Desf., Literature
Psilurus incurvus (Gouan) Schinz&Thell., 1, 04.04.2019,
Ö.Güner 3448 &Ö.Çetin
Stipa bromoides (L.) Dörfl., Medit., Literature
Taeniatherum caput-medusae (L.) Nevskisubsp.
crinitum(Schreb.) Melder, Literature
XANTHORRHOEACEAE
Asphodeline lutea (L.) Rchb., Literature
*Asphodelus aestivus*Brot., 5, 23.02.2019, Ö. Güner
3416 &Ö.Çetin
Asphodelus fistulosus L., 18, 23.02.2019,Ö. Güner 3417
&Ö.Çetin