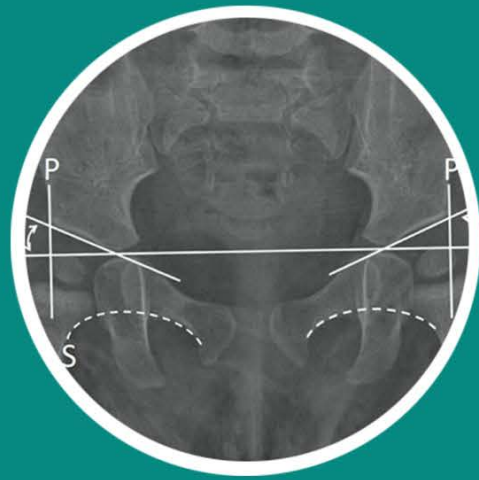
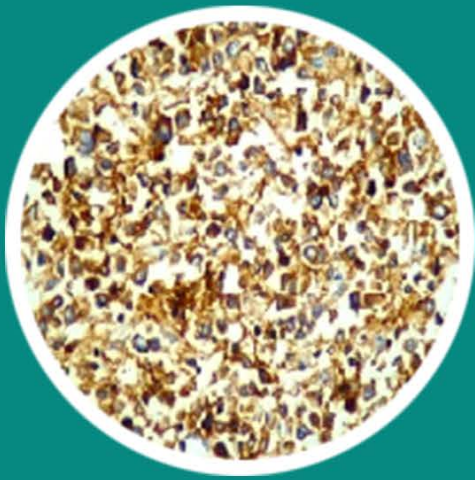




Volume 5 Issue 6 November 2019

e-ISSN: 2149-3189

# The European Research Journal



Copyright © 2019 by The Association of Health Research & Strategy

Available at <http://dergipark.org.tr/eurj>



# The European Research Journal

## Aim and Scope

The European Research Journal (EuRJ) is an international, independent, double-blind peer reviewed, Open Access and online publishing journal, which aims to publish papers on all the related areas of basic and clinical medicine.

Editorial Board of the European Research Journal complies with the criteria of the International Council of Medical Journal Editors (ICMJE), the World Association of Medical Editors (WAME), and Committee on Publication Ethics (COPE).

The journal publishes a variety of manuscripts including original research, case reports, invited review articles, technical reports, how-to-do it, interesting images and letters to the editor. The European Research Journal has signed the declaration of the Budapest Open Access Initiative. All articles are detected for similarity or plagiarism. Publication language is English. The journal does not charge any article submission or processing charges.

EuRJ recommends that all of our authors obtain their own ORCID identifier which will be included on their article.

The journal is published bimonthly (January, March, May, July, September, and November).

## Abstracting and Indexing

The journal is abstracted and indexed with the following: TR Index (ULAKBİM TR Dizin), Google Scholar, Index Copernicus (ICV 2018: 100), EMBASE, ProQuest Central, ROAD, SciLit, MIAR, J-Gate, SHERPA/RoMEO, BASE, EZB, CrossRef, JournalTOCs, WorldCat, TURK MEDLINE, Turkish Citation Index.

## Publisher

The European Research Journal (EuRJ)  
The Association of Health Research & Strategy  
Kırcaali Mah. Fevziçakmak Cd. Göktaş İş Mrk. Kat:3 No:62/12  
Osmangazi/BURSA-TURKEY  
[www.dergipark.org.tr/eurj/](http://www.dergipark.org.tr/eurj/)

**e-ISSN: 2149-3189**

The European Research Journal, hosted by Turkish JournalPark ACADEMIC, is licensed under a Creative Commons Attribution-NonCommercial-NoDerivatives 4.0 International License.



# Editorial Board

## FOUNDER EDITOR

**Rustem ASKIN, MD,**

Professor,

University of Health Sciences, International School of Medicine,

Department of Psychiatry, Istanbul, Turkey

Head of the Association of Health Research & Strategy, Bursa, Turkey

## EDITOR-IN-CHIEF

**Senol YAVUZ, MD,**

Professor,

University of Health Sciences, Bursa Yuksek Ihtisas Training and Research Hospital,

Department of Cardiovascular Surgery,

Bursa, Turkey,

## EDITORS

### Surgical Sciences

**Davut AKDUMAN, MD,**

Associate Professor,

University of Health Sciences, Keçiören Training & Research Hospital

Department of Otorhinolaryngology,

Ankara, Turkey

### Medical Sciences

**Nizameddin KOCA, MD,**

Assistant Professor,

University of Health Sciences, Bursa Yuksek Ihtisas Training & Research Hospital,

Department of Internal Medicine,

Bursa, Turkey

## ASSOCIATE EDITORS

**Soner CANDER, MD,**

Associate Professor,

Uludag University School of Medicine,

Department of Endocrinology & Metabolism,

Bursa, Turkey

**Omer SENORMANCI, MD**

Associate Professor,

University of Health Sciences, Bursa Yuksek Ihtisas Training & Research Hospital,

Department of Psychiatry,

Bursa, Turkey

**Evren DILEKTASLI, MD,**  
Associate Professor,  
The Life Hospital,  
Department of General Surgery,  
Bursa, Turkey

**Rahmi DUMAN, MD,**  
Associate Professor,  
Ankara LIV Hospital,  
Department of Ophthalmology,  
Ankara, Turkey

**Ali ASAN, MD**  
Associate Professor,  
University of Health Sciences, Bursa Yuksek Ihtisas Training & Research Hospital,  
Department of Infectious Disease,  
Bursa, Turkey

**Meliha KASAPOGLU AKSOY, MD**  
Associate Professor,  
University of Health Sciences, Bursa Yuksek Ihtisas Training and Research Hospital,  
Department of Physical Therapy & Rehabilitation,  
Bursa, Turkey

#### **STATISTICS EDITOR**

**Gokhan OCAKOGLU, PhD,**  
Associate Professor,  
Uludag University School of Medicine,  
Department of Biostatistics,  
Bursa, Turkey

#### **LANGUAGE EDITOR**

**Nazmi ZENGİN, MD,**  
Professor,  
Necmettin Erbakan University School of Medicine,  
Konya, Turkey

#### **EDITORIAL ASSISTANT**

**Ugur BOLUKBAS**

## INTERNATIONAL EDITORIAL BOARD MEMBERS

### **Ahmet KIZILAY, MD**

Professor,  
Inönü University School of Medicine,  
Department of Otorhinolaryngology, Malatya, Turkey

### **Alparslan ERSOY, MD**

Professor,  
Uludag University School of Medicine  
Department of Nephrology & Transplantation Bursa, Turkey

### **Ayse TOPCU AKDUMAN, MD**

Ataturk State Hospital  
Department of Obstetrics & Gynecology Duzce, Turkey

### **Aron Frederik POPOV, MD**

Professor,  
University of Frankfurt,  
Department of Cardiothoracic Surgery, Frankfurt, Germany

### **Canan CELIK, MD**

Professor,  
Giresun University School of Medicine  
Department of Physical Medicine & Rehabilitation, Giresun, Turkey

### **Cristina Florescu, MD**

Associate Professor,  
University of Craiova,  
Department of Medicine & Pharmacy, Romania

### **Cuma Bulent GUL, MD**

Associate Professor,  
University of Health Sciences, Bursa Yuksek Ihtisas Training & Research Hospital,  
Department of Nephrology & Transplantation, Bursa, Turkey

### **Demet CANSARAN DUMAN, PhD**

Associate Professor,  
Ankara University  
Department of Biology, Ankara, Turkey

### **Elif EKINCI, MD**

MBBS, FRACP, PhD  
University of Melbourne  
Department of Medicine, Melbourne, Australia

### **Emel YILMAZ, MD**

Professor,  
Uludag University School of Medicine,  
Department of Infectious Disease, Bursa, Turkey

### **Emin USTUNYURT, MD**

Associate Professor,  
University of Health Sciences, Bursa Yuksek Ihtisas Training & Research Hospital,  
Department of Obstetrics & Gynecology, Bursa, Turkey

### **Ender GUCLU, MD**

Professor,  
Medipol University School of Medicine,  
Department of Otorhinolaryngology, Istanbul, Turkey

**Erdem CUBUKCU, MD**

Associate Professor,  
Uludag University School of Medicine,  
Department of Medical Oncology, Bursa, Turkey

**Essam M MAHFOUZ, MD**

Professor,  
University of Mansoura School of Medicine  
Department of Cardiology, Mansoura, Egypt

**Francesco CARELLI, MD**

Professor,  
University of Milan School of Medicine,  
Department of Family Medicine, Milan, Italy

**Gary TSE, MD, PhD**

Assistant Professor,  
The Chinese University of Hong Kong,  
Department of Medicine and Therapeutics, Hong Kong, China

**Haci Murat CAYCI, MD,**

Associate Professor,  
University of Health Sciences, Bursa Yuksek Ihtisas Training & Research Hospital,  
Department of Gastrointestinal Surgery Bursa, Turkey

**Hasan ARI, MD,**

Associate Professor,  
University of Health Sciences, Bursa Yuksek Ihtisas Training & Research Hospital,  
Department of Cardiology, Bursa, Turkey

**Ibrahim TAYMUR, MD,**

Associate Professor,  
University of Health Sciences, Bursa Yuksek Ihtisas Training and Research Hospital,  
Department of Psychiatry, Bursa, Turkey

**Kendra J. GRUBB, MD, MHA, FACC**

Assistant Professor,  
Emory University School of Medicine,  
Department of Cardiovascular Surgery, Atlanta, GA, USA

**Koray AYAR, MD**

Assistant Professor,  
University of Health Sciences, Bursa Yuksek Ihtisas Training and Research Hospital,  
Department of Rheumatology, Bursa, Turkey

**Metin GUCLU, MD**

Associate Professor,  
University of Health Sciences, Bursa Yuksek Ihtisas Training & Research Hospital,  
Department of Endocrinology & Metabolism, Bursa, Turkey

**Muhammet GUZELSOY, MD**

Associate Professor,  
University of Health Sciences, Bursa Yuksek Ihtisas Training & Research Hospital,  
Department of Urology Bursa, Turkey

**Muzaffer DEMIR, MD**

Professor,  
Trakya University School of Medicine,  
Department of Hematology, Edirne, Turkey

**Nader D NADER, MD**

Professor,  
University of Buffalo School of Medicine  
Department of Anesthesiology, NY, USA

**Nesrin COBANOGLU, MD**

Professor,  
Gazi University School of Medicine  
Department of Medical Ethics and History, Ankara, Turkey

**Omer Fatih OLMEZ, MD**

Associate Professor,  
Medipol University School of Medicine,  
Department of Medical Oncology, Istanbul, Turkey

**Omer YALCIN, MD**

Professor,  
Kütahya University of Health Sciences, School of Medicine,  
Department of Pathology, Kütahya, Turkey

**Ozen OZ GUL, MD,**

Associate Professor,  
Uludag University School of Medicine,  
Department of Endocrinology & Metabolism, Bursa, Turkey

**Ozkan KANAT, MD,**

Professor,  
Uludag University School of Medicine,  
Department of Medical Oncology, Bursa, Turkey

**Safa KAPICIOGLU, MD**

Professor,  
Yildirim Bayezid University School of Medicine,  
Department of Orthopedics & Traumatology, Ankara, Turkey

**Sait Ait BenAli, MD**

Professor,  
Cadi Ayyad University School of Medicine,  
Department of Neurosurgery, Marrakech, Morocco

**Sedat ALTIN, MD**

Professor,  
University of Health Sciences, Yedikule Training & Research Hospital,  
Department of Chest Diseases, Istanbul, Turkey

**Semih HALEZEROGLU, MD, FETCS**

Professor,  
Acibadem University School of Medicine,  
Department of Thoracic Surgery, Istanbul, Turkey

**Veysel TAHAN, MD, FACP, FACG, FESBGH**

Assistant Professor,  
University of Missouri,  
Division of Gastroenterology and Hepatology, Columbia, Missouri, USA

**Yenal DUNDAR, MD**

University of Liverpool School of Medicine,  
Department of Psychiatry, Liverpool, UK

# Table of Contents

## Original Articles

- Diagnostic utility of clinical and epidemiologic features in fever of unknown origin** 928-938  
*Victor Roca Campaña, Rosa Eugenia Jiménez Paneque, Héctor Manuel Rodríguez Silva*
- The relationship between exercise dependence, cognitive style and personality characteristics in candidates participating in physical education and sports school special talent examination** 939-947  
*Güliz Şenormancı, Ayşe Semra Demir Akca, Ömer Şenormancı, Fatih Akca, Mustafa Gümüş, Fürüzan Köktürk, Rüstem Aşkın*
- Thiol/disulphide homeostasis in Helicobacter pylori infected patients** 948-956  
*Ahmed Ramiz Baykan, Cemile Biçer, Emre Gerçeker, Özcan Erel, Serkan Cerrah, Bülent Albayrak, Mustafa Utlü, Ayşe Kargılı*
- Family history in developmental dysplasia of the hip: should we follow-up?** 957-961  
*Sonay Aydın, Erdem Fatihoglu*
- Autism spectrum disorders among adolescents and adults and comparison with schizophrenia** 962-968  
*Aylin Küçük, Fulya Maner, Mehmet Emin Ceylan*
- Role of B-type natriuretic peptide in diagnosis of coronary artery disease** 969-976  
*Bedrettin Boyraz, Ferit Onur Mutluer, Hakan Çakır, Dursun Topal, Mehmet Demir, Fahri Er, Tezcan Peker, Mustafa Yılmaz, Alkame Akgümüş, Erhan Tenekecioğlu*
- Neovascular age-related macular degeneration: 18-month outcomes of aflibercept treatment in patients resistant to ranibizumab** 977-980  
*Elif Ertan, Mustafa Doğan*
- The relationship between emotional appetite and bipolar features in obese and non-obese individuals** 981-989  
*Ersin Budak, İbrahim Taymur, Sinay Önen, Hacı Murat Çaycı, Güliz Şenormancı*
- The efficacy of bleb needling revision with 5-fluorouracil in encapsulated bleb after unsuccessful trabeculectomy** 990-995  
*Mehmet Okka, Enver Mirza, Refik Oltulu, Selman Belviranlı, Mehmet Kemal Gündüz*
- Study of biofilm formation in Salmonella species isolated from food** 996-1000  
*Mohammad Mehdi Soltan Dallal, Mohammad Khalifeh-Gholi, Hojjat Rahmani, Sara Sharifi-yazdi, Shabnam Haghghat Khajavi, Mohammad Kazem Sharifi Yazdi*
- Clinical significance of mean platelet volume/lymphocyte ratio and mean platelet volume/platelet ratio in the exacerbation of chronic obstructive pulmonary disease** 1001-1006  
*Emine Özseri, Mehmet Zahid Koçak*
- The relation between performance and oral health in male athletes** 1007-1013  
*Hakan Yapıcı, Oğuz Eroğlu, Sinan Ayan, Serdar Bağlar, Uğur Altay Memiş, Ali Ahmet Doğan*
- Effect of cardiac rehabilitation on neutrophil-to-lymphocyte ratio and platelet-to-lymphocyte ratio in ST elevation myocardial infarction patients** 1014-1019  
*İsmet Zengin, Selma Arı*



## Case Reports

### **Unusual uterine metastasis of plasmablastic lenfoma: a case report**

*Suat Karataş, Tayfur Çift, Veysel Şal, Meltem Tekeliođlu, Özlem Ton*

1020-1023

### **A new etiology for variant of Guillain-Barré syndrome: bariatric surgery**

*Şevki Şahin, Miruna Florentina Ateş, Nilgün Çınar, Sibel Karşıdağ*

1024-1027

### **Toxic effects of herbal medicines: Teucrium polium and acute kidney injury**

*Selin Aktürk Esen, Serdar Kahveciođlu, Cuma Bülent Gül, Nimet Aktaş, İrfan Esen*

1028-1030

### **Rectus femoris tendinopathy: a case report**

*Filiz Özdemir, Fatma Kızılay, Şeyma Toy, Zühal Altay*

1031-1035