



















































































































and TS have been used to assist with the design of single forest roads, but the possibility for using them to optimize forest road networks also presents an area of future research. Within the forest planning studies, these techniques have been used for timber management options, while shortest path algorithms have been used to optimize road networks.

The second researchable question relates to the design of optimal road networks in roadless areas. While many current "roadless areas" in North America may never be developed, areas can be found where the road network is not very dense, and the in-fill of roads is possible for timber production purposes. Here, one might apply the SA approach by Akay (2004) to an entire proposed network, where the initial road paths are generated, and vertical alignment is then optimized. Single road optimization processes could also be developed to utilize GIS techniques without any proposal of new roads, to identify the best transportation network of a given road density for a landscape. These methods could be used in conjunction with shortest path or other techniques to reduce the proposed roads to a network that is appropriate given the timber production or recreation activities proposed, or so that other environmental impacts measured at larger scales (i.e., sediment production, wildlife habitat) are minimized.

The third researchable topic is to design a smaller, more effective forest transportation network in areas where roads exist, yet new road construction will not be considered. A management goal may be to reduce the density of roads for wildlife, aquatic resource, or visual quality reasons. Bettinger *et al* (1998) provided a method to reduce the network given sediment concerns. However, a more in-depth analysis of road profiles and landscape conditions (as used in the individual road design problem) may help in the assessment of road network alternatives. Combining these processes with a forest road network optimization process would allow one to evaluate contemporary land management options.

Most of the recent advances in optimization models for single forest roads rely highly on DEMs and other GIS databases (soils, streams, etc.). The fourth researchable question relates to resolution of DEM and accuracy of the attribute data that directly affect the performance of the optimization process. Tan (1999) notes that cell sizes that are too small bog down the processing associated with network nodes, and cell sizes that are too large result in accuracy levels that may be unacceptable. Thus, the trade-offs related to the input databases require some thought. Available attribute data in forested areas may also not represent the actual conditions well; however, the quality of GIS data keeps improving as GIS technologies advance. These advances include improved data sources for generating high-resolution and accurate DEMs using the latest technology (LIDAR), highly developed GIS techniques to store, analyze, and display spatial data, and advanced features of sophisticated computer software languages to display and render high-resolution 3D images on personal computers.

The fifth researchable topic is the verification of the optimal road design systems. To improve their performances in the future, the solution obtained from these optimization systems should be further tested by comparing them with current forest road design systems for the same area. Finally, office and field road design can be better linked. Although, the optimization systems do not provide a designer with a decision tool that locates the final route alignment, they can be enhanced by integrating it with Global Positioning Systems (GPS) extensions to help the designer evaluate the model solutions on the ground.

## 5. Conclusions

Computer-aided road design systems, using optimization techniques, provide land managers with a decision support tool that quickly evaluate alternatives. A number of approaches have been used to optimize the placement (vertical and horizontal) of individual forest roads. Enabling the optimization of entire networks of roads across a landscape, while considering broader-scale issues such as sedimentation and wildlife habitat, remains an issue to be addressed. In addition, assessing the design of optimal transportation networks from the suite of roads currently available seems to be a fruitful area of research, particularly if the algorithms used to delineate single forest roads can be used to assess which current roads should be eliminated from the network. Optimization of entire road networks with shortest path algorithms has received considerable attention in the forestry literature. Whether heuristics or exact algorithms can improve on the efficiency of shortest path algorithms remains to be seen. However, advances in computer-aided optimal road design and road network

management have provided land managers, researchers, and others the ability to make more informed management decisions.

## References

- AASHTO 1990. American Association of State Highway and Transportation Officials. A Policy on Geometric Design of Highway S and Streets, Washington, D.C.
- Akay, A. E. 2004. A New Method of Designing Forest Roads. *Turkish Journal of Agriculture and Forestry*. 28: 273-279.
- Akay, A. E. and Sessions J. 2005. Applying the Decision Support System, TRACER, to Forest Road Design. *Western Journal of Applied Forestry*. 20 (3): 184-191.
- Akay, A. E. 2006. Minimizing Total Costs of Forest Roads with Computer-Aided Design Model. *Academy Proceedings in Engineering Sciences (SADHANA)*. 31(5): 621–633.
- Akay, A. E., Erdas, O., Reis, M., Yuksel, A. 2008. Estimating Sediment Yield from A Forest Road Network by Using A Sediment Prediction Model and GIS Techniques. *Building and Environment*. 43(5): 687-695.
- Anderson, A. E and Nelson, J. D. 2004. Projecting Vector Based Road Networks With A Shortest Path Algorithm. *Can. J. For. Res.* 34 (7): 1444-1457.
- Aruga, K., Sessions, J., Akay, A., Chung, W. 2004. Optimizing Horizontal and Vertical Alignments of Forest Roads Using A High Resolution DEM. *Proceedings of the International Mountain Logging and 12th Pacific Northwest Skyline Symposium, Vancouver, British Columbia, June.*
- Aruga, K., Sessions, J., Akay, A. E. 2005. Heuristic Techniques Applied to Forest Road Profile. *Japanese Forestry Society, Journal of Forest Research*. 10 (2): 83-92.
- Bailenson, J. M., Shum, M. S., Uttal, D. H. 1998. Road Climbing: Principles Governing Asymmetric Route Choices on Maps. *Journal of Environmental Psychology*. 18: 251-64.
- Barreto, P., Amaral, P., Vidal, E., Uhl, C. 1998. Costs and Benefits of Forest Management for Timber Production in Eastern Amazonia. *Forest Ecology and Management*. 108: 9-26.
- Beasley, J., Dowsland, K., Glover, F., Manuel, L., Peterson, C., Reeves, C., Soderberg, B. 1993. *Modern Heuristic Techniques for Combinatorial Problems*. Halsted Press: An Imprint John Wiley and Sons, Inc. New York. 320 p.
- Bettinger, P., Sessions, J., Johnson, K. N. 1998. Ensuring the Compatibility of Aquatic Habitat and Commodity Production Goals in Eastern Oregon with a TabuS Procedure. *Forest Science*. 44: 96-112.
- Bowman, E. H. and Fetter, R. B. 1967. *Analysis for Production and Operations Management*. Irwin Series in Quantitative Analysis for Business. Yale University. 870 p.
- Christian, J. and Caldera, H. 1988. Earthmoving Cost Optimization by Operational Research. *Canadian Journal of Civil Engineering*. 51: 679-684.
- Church, R. L., Murray, A. T., Weintraub, A. 1998. Locational Issues in Forest Management. *Location Science*. 6: 137-53.

- Clark, M. M., Meller, R. D., McDonald, T. P. 2000. A Three-Stage Heuristic for Harvest Scheduling with Access Road Network Development. *Forest Science*. 46: 204-18.
- Cormen, T. H., Leiserson, C. E., Rivest, R. L. 1990. *Introduction to Algorithms*. MIT Press. ISBN 0-262-03141-8.
- Dijkstra, E. W. 1959. A Note on Two Problems in Connection with Graphs. *Num. Math* 1: 269–271.
- Easa, S. M. 1988. Selection of Roadway Grades That Minimize Earthwork Cost Using Linear Programming. *Transportation Research*. 22A (2): 121-136.
- Elnagar, A. and Hussein, A. 2000. On Optimal Constrained Trajectory Planning in 3D Environments. *Robotics and Autonomous Systems*. 33: 195-206.
- Erdas, O. 1997. *Forest Roads*. Blacksea Technical University, Faculty of Forestry, Trabzon. Turkey. 405 p.
- Gipps, P. G., Gu, K. Q., Held, A., Barnett, G. 2001. New Technologies for Transport Route Selection. *Transportation Research Part C*. 9: 135-54.
- Glover, F. 1989. Tabu Search-Part I. *ORSA J. Computing*. 1: 190-206.
- Gullison, R. E and Hardner, J. J. 1993. The Effects of Road Design and Harvest Intensity on Forest Damage Caused by Selective Logging: Empirical Results and A Simulation Model From the Bosque Chimanes, Bolivia. *Forest Ecology And Management*. 59: 1-14.
- Holland, J. H. 1975. *Adaptation in Natural and Artificial Systems*. University of Michigan Press, Ann Arbor.
- Ichihara, K., Tanaka, T., Sawaguchi, I., Umeda, S., Toyokawa, K. 1996. The Method for Designing The Profile of Forest Roads Supported by Genetic Algorithm. *The Japanese Forestry Society, Journal of Forest Research*. 1: 45-49.
- Jha, M. K. and Schonfeld, P. 2004. A Highway Alignment Optimization Model Using Geographic Information Systems. *Transportation Research Part A*. 38: 455-81.
- Jong, J. C. and Schonfeld, P. 2003. An Evolutionary Model for Simultaneously Optimizing Three-Dimensional Highway Alignments. *Transportation Research Part B*. 37: 107-128.
- Kanzaki, K. 1973. On the Decision of Profile Line of Forest Road by Dynamic Programming. *Journal of Japanese Forestry Society*. 55: 144-148.
- Kirby, M. W., Hager, W. A., Wong, P. 1986. Simultaneous Planning of Wildland Management and Transportation Alternatives. *TIMS Studies In The Management Sciences*. 21: 371-87.
- Kirkpatrick, S., Gelatt, C. D., Vecchi, M. P. 1983. Optimization by Simulated Annealing, *Science*. 220: 671-680.
- Kramer, B. W. 1993. *A Road Design Process for Low Volume Recreation and Resource Development Roads*. Oregon State University, Corvallis. 98 p.
- Kramer, B. W. 2001. *Forest Road Contracting, Construction, and Maintenance for Small Forest Woodland Owners*. Oregon State University, Forest Research Laboratory, Research Contribution 35. 79 p.

- Lanthier, M., Nussbaum, D., Sack, J. R. 2003. Parallel Implementation of Geometric Shortest Path Algorithms. *Parallel Computing*. 29: 1445-79.
- Liatsis, P. and Tawfik, H. M. 1999. Two-Dimensional Road Shape Optimisation Using Genetic Algorithms. *Mathematics and Computers in Simulation*. 51: 19-31.
- Lugo, A. E. and Gucinski, H. 2000. Function, Effects, and Management of Forest Roads. *Forest Ecology and Management*. 133: 249-62.
- Mayer, R. and Stark, R. 1981. Earthmoving Logistics. *Journal of Const. Div.* 107(CO2): 297-312.
- Metropolis, N., Rosenbluth, A., Rosenbluth, M., Teller, A., Teller, E. 1953. Equation of State Calculations by Fast Computing Machines. *Journal of Chemical Physics*. 21: 1087-1101.
- Oglesby, C. and Hicks, R. 1982. *Highway Engineering*, John Wiley and Sons, New York.
- Olsson, L. and Lohmander, P. 2005a. Optimal Forest Transportation With Respect to Road Investments. *Forest Policy and Economics*. (In Press).
- Olsson, L. 2005b. Road Investment Scenarios in Northern Sweden. *Forest Policy and Economics*. (In press).
- O'Mahony, M. J., Ueberschaer, A., Owende, P. M. O., Ward, S. M. 2000. Bearing Capacity of Forest Access Roads Built on Peat Soils. *Journal of Terramechanics*. 37: 127-38.
- Parker, N. A. 1977. Rural Highway Route Corridor Selection. *Transportation Planning Techniques*. 3: 247-256.
- Pearce, J. K. 1974. *Forest Engineering Handbook, a Guide for Logging Planning and Forest Road Engineering*, Bureau of Land Management, Oregon State Office, US Department of the Interior. Divisions 100-800, pp. 220.
- Pérez de al Cruz, J. L., Conejo-Muñoz, R., Morales-Bueno, R, Puy-Huarte, J. 1995. Highway Design by Constraint Specification. *Artificial Intelligence in Engineering*. 9: 127-39.
- Peters, P. A. 1978. Spacing of Roads and Landings to Minimize Timber Harvest Cost. *Forest Science*. 24: 209-17.
- Richard, M. J., Huang, M. Z., Bouazara, M. 2004. Computer Aided Analysis and Optimal Design of Mechanical Systems Using Vector-Network Techniques. *Applied Mathematics and Computation*. 157: 175-200.
- Sessions, J. and Sessions, J. B. 1991. *Scheduling and Network Analysis Program (SNAP II): User's Guide*. Department of Forest Engineering, Oregon State University, Corvallis, OR.
- Tan, J. 1999. Locating Forest Roads Bby A Spatial and Heuristic Procedure Using Microcomputers. *International Journal of Forest Engineering*. 10 (2): 91-100.
- Tan, J. 2000. Application of Dynamic Programming to Optimum Location of A Forest Road. *International Journal of Forest Engineering*. 11 (2): 33-42.
- Teasley, R. L. 2002. Managing Forest Road Removal Using Dynamic Programming: A Pilot Study. *American Journal of Undergraduate Research*. 1 (2): 23-30.

- Turner, A. K. 1978. A Decade of Experience in Computer Aided Route Selection. *Photogrammetric Engineering And Remote Sensing*. 44: 1561-1576.
- Weintraub, A., Jones, G., Magendzo, A., Meacham, A., Kirby, M. 1994. A Heuristic System to Solve Mixed Integer Forest Planning Models. *Operations Research*. 42: 1010-1024.
- Weintraub, A., Jones, G., Meacham, M., Magendzo, A., Magendzo, A., Malchuk, D. 1995. Heuristic Procedures for Solving Mixed-Integer Harvest Scheduling - Transportation Planning Models. *Canadian Journal of Forest Research*. 25: 1618-26.
- Weintraub, A., Church, R. L., Murray, A. T., Guignard, M. 2000a. Forest Management Models and Combinatorial Algorithms: Analysis of State of the Art. *Annals of Operations Research*. 96: 271-85.
- Weintraub, A. P., Epstein, R., Murphy, G., Manley, B. 2000b. The Impact of Environmental Constraints on Short Term Harvesting: Use of Planning Tools and Mathematical Models. *Annals of Operations Research*. 95: 41-66.
- Zhan, F. B. 1997. Three Fastest Shortest Path Algorithms on Real Road Networks: Data Structures and Procedures. *Journal of Geographic Information and Decision Analysis*. 1: 70-82.



# DETERMINATION OF THE PRODUCT CONDITIONS OF PULP AND PAPER FROM WHITE MULBERRY (*Morus alba* L.) BY KRAFT METHOD

Ayhan GENÇER<sup>1</sup>, Göksu ŞİRİN<sup>2</sup>, Hülya GÜL<sup>1</sup>, Ufuk ÖZGÜL<sup>1</sup>

<sup>1</sup>BÜ Faculty of Forestry, Department of Forest Industry Engineering, 74100 Bartın

<sup>2</sup>GÜ Almus MYO, Almus / Tokat

## ABSTRACT

In this study, 3 different cooking were performed from white mulberry by kraft process, under the conditions such as; Active Alkali / Sülfidite rates, 16/20, 18/20 and 20/22, the temperature at 180°C for 170 minutes. Physical and mechanical properties of the papers, produced at 20SR°, 35SR° and 50SR° were carried out. Physical properties were improved when the beating degree was increased at the same cooking conditions. Bursting and tearing resistance were increased. Paper pulp yield decreased with increasing the amount of total alkali.

**Keywords:** White mulberry (*Morus alba* L.), kraft method, pulp production

## 1. INTRODUCTION

White mulberry wood is native to China. It is distributed in Japan, Korea, Manchuria, India, Pakistan, Iran, North Europe and the Mediterranean countries. Capable of up to 15 m length, thick branches of a large tree that canopy. It is easy grown in deep soils, as well as in dry, sandy and chalky soils, endurance salt and cold weather conditions as a fast-growing species and usually likes warmer climate zones (Gökmen, 1973). It exists mostly in Erzincan followed by Elazığ, Ankara, Malatya and Tunceli, even can grow in every region. (Anon., 2002). Mulberry wood involves the colors from light brown to greenish brown, dark brown, brown or black and violet-colored, and has heartwood with (Merev, 1988). Chocolate Brown color yellowish-brown. The other properties are known that the annual ring limits are apparent, air-dry weight is 0.65 g/cm<sup>3</sup> (Bozkurt and Erdin, 1995), contents thyll formation as the same in other ring pored trees (Örs and Keskin, 2001).

---

\*Yazışma yapılacak yazar: agencer@bartin.edu.tr

Makale metni 28.05.2013 tarihinde dergiye ulaşılmış, 30.06.2013 tarihinde basım kararı alınmıştır

When wood treated with cold and dilute alkali solution only a small amount lignin can be dissolved however, for the solubility of the lignin in wood significantly, if the wood chips are heated with NaOH solution under pressure, to 160-180 °C, most of the lignin is removed. This process is the base of the general commercial soda method (Browning, 1967). Alkali used in the methods alkali is consumed in lignin reactions, the solubilization of carbohydrates, naturally found in wood and neutralize organic acids formed during cooking, resinous substances and tannin reactions. (Tank, 1980). Mulberry tree has an important role in the history of the paper. The Chinese produced the paper from mulberry tree by peeling the inner bark, and by using lime and ash having alkaline property dissolved in water producing pulp which was beated in a mortar (Eroğlu, 1990).

Fiber length shows correlation with the properties of sound paper. For this reason, the first that comes to mind for the production of pulp of wood of coniferous trees. However, the strength of the paper is decreased after a certain point since the fiber length deform the paper formation. Therefore, short and thin-leaved wood fibers are preferred for many types of paper (Eroğlu, 2003). White mulberry belongs to ring pored trees in terms of sequence of trahe (Berkel, 1970). The average fiber width and lumen diameter of White Mulberry trunk wood was averages 15.33 µm, 52 µm (Şirin, 2006). Based on these results;

Runkel ratio = (Fibre wall thickness x 2) / lumen diameter (Kırcı, 2003), the formula

$$\text{Runkel ratio} = (8.81 \times 2) / 6.52 = 2.702 > 1$$

It was included in coarse fibers group

Some chemical properties of White Mulberry wood were investigated (Şirin, 2006) and the values determined were given in Table 1.

Table 1. Chemical analysis of trunk wood and branches of White mulberry (*Morus alba* L.) (Şirin, 2006).

The analysis	Results (%)
Cold water solubility	6,04
Hot water resolution	14,83
Resolution 1% NaOH	14,83
Alcohol resolution	11,13
Holocellulose rate	85,98
Cellulose ratio	53,08
Lignin ratio	21,30

It is suitable for the pulp production in terms of the cellulose ratio the same as it was in many broadleaved species.

## 2. MATERIALS AND METHODS

The test specimen was obtained from Inozu district of Ankara (Beypazarı) region located at 1000 m altitude, and the North-West direction. White mulberry wood first was chipped, and moisture content was determined, then weigh to 700 g oven dry, afterwards stored in polyethylene bags. It is a fact that there is no available literature in relation to pulp production with mulberry wood previously. Since the kraft method is suitable for all types of wood it was chosen in this study. Pulp production was performed in a cylindrical boiler which is working with heating and resistant to pressure, rotating 2 cycles for per minute. Literature findings were based on the determination of the cooking conditions as well as temperature was maintained at 170 ° C. Cooking conditions are given in Table 2.

Table 2: Cooking conditions used in the study.

Active Alkali / Sulfite (%)	16/20(I)	18/20 (II)	20/22 (III)
Solids (%)	20.88	23.87	27.27
Solid content ( g )	271	256.15	242.76
Moisture ratio (%)	12	12	12

The unbeaten paper was produced with 35 SR° and 50 SR° from the pulp, then, the paper thickness, surface smoothness, air permeability, tear resistance, and burst resistance properties were determined.

Test papers were conditioned under the temperature at 23±1 and relative humidity with 65 % according to TAPPI T402 om-88 standard for 24 hours in the room, followed by subjected to the tests given below. TAPPI T402 om-88 standard test papers obtained by the temperature and relative humidity of 23 ± 65% of the air in the first 24 hours after conditioning were subjected to the following tests,

1. According to TAPPI 410 om-88 standard weight,
2. According to TAPPI 411 om-89 standard, thickness, density and volume,
3. Moisture according to TAPPI 412 om-90,
4. According to TAPPI 220 om-88 standard test paper cutting,
5. According to TAPPI 410 om-88, expressed in grams of 4-fold paper with founding tear resistance,  
Tear resistance index =  $x (16/4) \times 9.81 / \text{weight}$ ,  
Formula  $\text{mN.m}^2 / \text{g}$  calculated,
6. TAPPI 403 om-91 standards, determined by the bursting strength in  $\text{kg/cm}^2$ ,  
Index =  $1000 \times 0.0981 \times \text{Bursting resistance} / \text{Weight formula kPa.m}^2 / \text{g}$ , respectively.

### 3. RESULTS AND DISCUSSIONS

Cook the paper pulp screened yield values obtained is given in Table 3.

Table 3: White mulberry wood screened pulp produced in yields.

Active Alkali / Sulfite (%)	16/20 (I)	18/20 (II)	20/22 (III)
Elimination yield (%)	38.44	36.60	34.68
Screen surplus (%)	2.00	0.61	0.70
Total yield (%)	40.44	37.20	35.38

In the first cooking, active alkali and sulfidity were chosen 16 % and 20 % respectively, the eliminated yield was determined to be 38.44 %. The eliminated yield values were given in Table 3.

The eliminated yield was determined to be 36.60 %. Active alkali was increased to 18 % and sulfidity to 22 % because of the decline in yield, and eliminated yield was calculated to be 34.70 %. Because the decline in the yield was taken in to account, active alkali and sulfidity were not increased, therefore re cooking was not done. Table 4 shows some of the features white mulberry wood manufactured hand made sheets.

Table 4: White mulberry wood essay papers produced some of the features.

Cooking	SR°	Surface Smoothness (ml/min)	Air Permeability (ml/min.)	Thickness (µm)	Tear index (nM. m <sup>2</sup> /g)	Burst index (kPa.m <sup>2</sup> / g)
I (16/20)	20	781	>5000	176	102	0.53
	35	580	1925	131	281	1.77
	50	492	420	126	229	2.32
II (18/20)	18	829	>5000	180	121	0.52
	35	506	2443	142	255	1.76
	50	340	470	125	227	2.28
III (20/22)	20	717	>5000	176	125	0.54
	35	521	1757	140	280	2.06
	50	395	499	125	234	2.42

The paper testing is done based on the produced paper beating 50 SR° When the paper produced 50 SR° was examined for surface smoothness it was seen that decreased when NaOH ratio increased from 16 % to 18 % and air permeability increased at constant sulfidity 20 %. It may be caused by weakening of the fibers with burning affect of NaOH. Tear and burst resistance decreased at fixed sulfidity 20 %, when NaOH ratio increased from 16 % to 18 % However, it increased when the sulfidity was increased to 22 % at the same conditions. The

decline in the yield indicates that it is not possible to produce paper without giving loss in the part of carbohydrate with sulphate cooking solution. Hemicelluloses fractions having low molecular weight and labile to alkali merge in to cooking solution at the beginning of the cooking. Although cellulose component is the most durable polymer against alkali attack, 5 % of cellulose is dissolved during kraft cooking and merge in to cooking solution (Kırcı, 2003).

The loss in the yield caused from increased total alkali quantity might be resulted from cellulose degradation by alkali attack. Therefore, viscosity should be monitored in cooking by using lower alkali in the further experiments.

## 5. CONCLUSIONS

White mulberry has a high potential resource since it is distributed in a broad area in Turkey. It has sound wood, as well as can be used in the production of pulp and paper because of the high cellulose content. Although kraft method is used in this study, further studies based on chemical, semi-chemical and mechanical methods are needed to get precise finding whether white mulberry suitable for pulp and paper.

## REFERENCES

- Berkel, A., 1970, Ağaç Malzeme Teknolojisi, İstanbul Üniversitesi Orman Fakültesi, Yayın No: 1448, İstanbul
- Bozkurt, Y., Erdin, N., 1995. İğne Yapraklı ve Yapraklı Ağaç Odunlarında Tanıma Özellikleri, İstanbul.
- Browning, B. L. 1967. Methods of Wood Chemistry. Institute of Paper Chemistry Appleton, Wisconsin, Amerika.
- Eroğlu, H., 2003, Kağıt Hamuru ve Kağıt Fiziği Ders Notları, Zonguldak Karaelmas Üniversitesi, Yayın No:27, Bartın.”
- Eroğlu, H., 1990, Kağıt Hamuru ve Kağıt Fiziği Karadeniz Teknik Üniversitesi, 2.Baskı,Yayın No:90, Trabzon.”
- Gökmen, H. 1973, Kapalı Tohumlular, Şark Matbaası, I. Cilt.p.186-190, Ankara.
- Gündüz, G., Yıldırım, N., Şirin, G., Onat, S. M. 2009 Ak Dut Ağacının Anatomik, Kimyasal, Fiziksel ve Mekanik Özellikleri, Düzce Üniversitesi Orman Fakültesi, Cilt:5, Sayı:1
- Kırcı, H. 2003 Kağıt Hamuru Endüstrisi Ders NotlarıKaradeniz Teknik Üniversitesi Orman Fakültesi Yayın No:72, Trabzon.
- Merev, N.,1988, Odun Anatomisi ve Odun Tanıtımı, Ders Notları, Karadeniz Teknik Üniversitesi, Orman Fakültesi, Yayın No:306, Trabzon.”

- o Örs, Y., Keskin, H., 2001,Ağaç Malzeme Bilgisi,T.C. Sanayi Ve Ticaret Bakanlığı KOSGEB Yayınları, ISBN: 975-7608-87-4, Ankara.
- o Şirin, G., Ak Dut (*Morus alba L.*) Ağacının Bazı Anatomik ve Kimyasal Özellikleri, Zonguldak Karaelmas Üniversitesi Fen Bilimleri Enstitüsü.
- o Tank, T., 1980, Lif ve Selüloz Teknolojisi I, İstanbul Üniversitesi Orman Fakültesi, Yayın No: 272, 159 s,İstanbul.



# IMPACTS OF FOREST HARVESTING OPERATIONS ON SOIL COMPACTION IN SCOTCH PINE-FIR MIXED STANDS (ÇANKIRI SAMPLE)

**Kayhan MENEMENCİOĞLU<sup>1</sup>, Ender BUĞDAY<sup>1</sup>, İlker ERCANLI<sup>1</sup>**

<sup>1</sup>Çankırı Karatekin University, Faculty of Forestry, Forest Engineering Department,  
18200, Çankırı/TURKEY

## ABSTRACT

This study investigated soil compaction, caused by tree felling and ground based forest harvesting operations, in sandy loamy brown forest soil, located in mixed forest stand harvesting units. In the study area, conventional forest harvesting is still practiced and this resulted in considerable soil compaction. As the forests are on the mountainous landscape, ground skidding is carried out by human, animal or tractor power. The impacts of harvesting operations in felling and skidding areas on soil compaction were assessed in this study. Thirty nine sample areas were taken for two soil depths (0-5 cm and 5-10 cm) before and after tree felling and ground skidding activities measuring 7 samples for each, in four different stands. Soil compactions at logged areas were nearly two times greater than the unlogged areas, except tree felling values at 5-10 cm depth.

**Keywords:** Soil compaction, brown forest soil, tree felling, ground skidding, penetrometer

## INTRODUCTION

Forest harvesting operations (FHO) can cause considerable soil disturbances as removal and mixing of topsoil, compaction of soil layers (Jurgensen et al., 1997; Kozłowski, 1999; Agherkakli et al., 2010). Disturbance can negatively affect soil physical properties via increased soil compaction (Tan et al., 2005; Naghdi, et al., 2007; Gebauer et al 2012). Soil compaction increases bulk density (Van Rees et al 2001; Ares et al. 2005; Demir et al. 2007; Makineci et al. 2007; Lotfalian and Bahmani, 2011), decreases porosity, infiltration capacity (Kozłowski, 1999; Grigal 2000; Startsev and McNabb 2000; Özgöz and Okursoy 2001; Rohand et al. 2004; Ares et al. 2005; Ampoorter et al. 2007; Demir et al. 2007), saturated hydraulic conductivity (Wood et al. 2003; Grace et al. 2006; Ampoorter et al. 2007) and microbial activities (Jordan et al 2003; Ares et al. 2005; Tan et al. 2008). The soil compaction can reduce tree root volume by increasing soil resistance to root growth or decreasing oxygen and water supply to plant roots (Murphy et al., 2004). These characteristics have potential to mitigate plant and tree growth (Corns 1998; Murphy et al 2004; Lotfalian and Bahmani, 2011; Gebauer et al 2012). Besides soil compaction, soil mixing, puddling, and rutting are important types of soil disturbances that can cause a disruption of matter flow of disturbance (Agherkakli et al., 2010). In addition, degree of hazard caused by FHO depends on several factors such as soil moisture content (Ampoorter 2011; Ares et al 2005; Eliasson 2005; Korb 2011; Naghdi et al 2007), topography, operation method (clear-cut, single-tree selection, group selection), harvesting method (ground based logging, skyline or even helicopter systems) (Lister 1999; Donagh et al 2010; Ampoorter 2011), type of machinery used and the number of machinery passes (Donagh et al 2010; Eliasson 2005; Gebauer 2012; Hutchings 2002; Junior et al 2007). When all adverse effects on forest soil and environment were considered, the timber harvesting may be considered as an disturbance activity all over the world (Najafi et. al., 2009).

The objective of this study was to assess the soil disturbance and compaction caused by FHO in Ilgaz Forests, located in north central of Turkey. For this purpose, we measured soil compaction before and after tree felling and ground skidding with rubber-tyred tractors in highly productive Scotch Pine-Fir Stands.

\* Yazışma yapılacak yazar: [kmenemen@karatekin.edu.tr](mailto:kmenemen@karatekin.edu.tr)

Makale metni 01.06.2013 tarihinde dergiye ulaştırılmış, 15.06.2013 tarihinde basım kararı alınmıştır.

## MATERIALS AND METHODS

### Study area

This study was carried out in Scotch Pine-Fir Stands located in Yenice Forest District, Ilgaz Forest Management Directorate, approximately 100 km northeast of Çankırı Province ( $41^{\circ} 02' 20''$ - $41^{\circ} 02' 10''$ N latitudes and  $33^{\circ} 46' 24''$ - $33^{\circ} 47' 45''$ E longitudes) in north central Turkey (Figure 1).

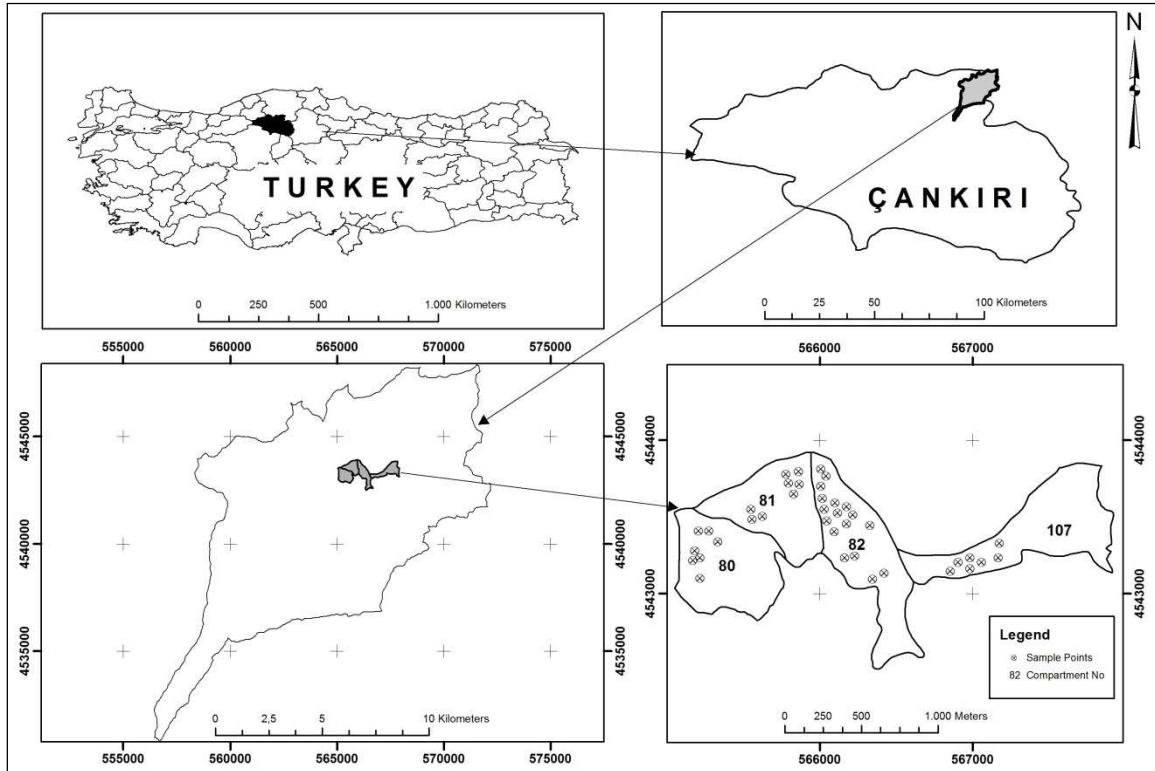


Figure 1. Location of the samples in the study area in Çankırı-Turkey

The elevation in the study area ranges from 1380 m to 1620 m with average of 1460 m (Figure 2) and average slope is 30-35% according to the IUFRO slope classification (Figure 3).

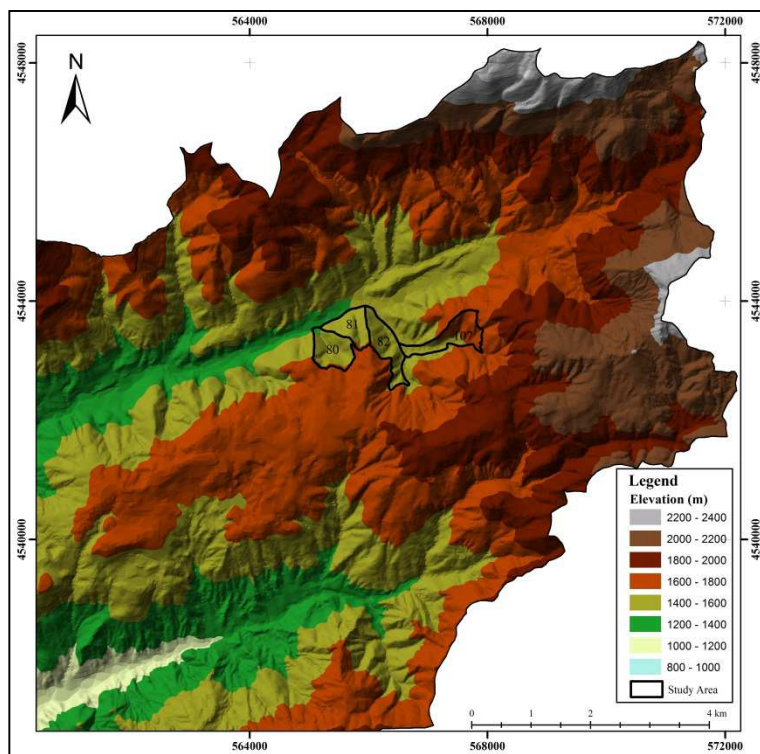


Figure 2. Elevation map of the study area

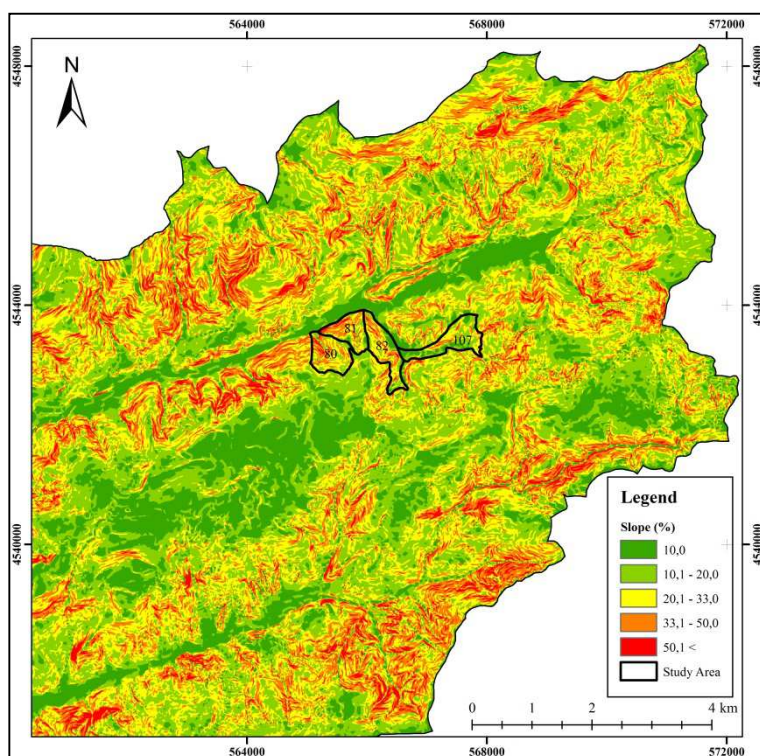


Figure 3. Slope map of the study area

The climate in the study area is continental-coastal type, with the mean annual temperature of 8.2 °C. Mean annual precipitation is 410 mm, approximately half of which occurs as snow, and the rest as of rainfall occurs in the growing season between May and October (Anonymous, 2008). Prior to harvest, the forest stand was

dominated by Scotch Pine (*Pinus sylvestris* L.) and Fir trees (*ağabeyes nordmanniana* subsp. *Bornmulleriana* Mattf.), and some Austrian-pine (*Pinus nigra* Arnold). Brown forest soil is the main soil type (sandy loam and sand) in the study area (Göl et al. 2010). Single-tree selection harvesting system is implemented, individual trees that are ready for harvest are removed in the study area. The total volume of production at the studied compartments (80, 81, 82 and 107) was 3320 m<sup>3</sup> and extraction of logs from the stump area to roadside landing was achieved by a ground-based skidding system. The use of the farm tractor is widespread throughout Turkey with the advantages of assembling appropriate technical equipment for the terrain conditions and several items of forestry equipment (loading, skidding and road surface smoothing equipment) (Melemez et al 2013). Rubber-tyred farm tractor was used in the study area to skid logs to a landing point for loading onto trucks is conventionally carried out in the areas where slope was less than 30% and this method is known as the worst method causing soil disturbance.

### Data preparation

We studied the impact of FHO on soil compaction in four different compartments (Figure 1). Soil compaction was measured before and after tree felling and ground skidding activities at different sample points. Trees were felled and branches were cut by using power saw. Hand-held cone (30°) penetrometer was used to examine the impact of tree felling and ground skidding activities on soil compaction. Herbaceous, litters and debris at measurement points were cleaned and measurements were taken by placing the cone on the soil surface with the shaft upright. The cone was pressed into the soil until the soil is level with the base of the cone to minimize variability in starting depth (Figure 2). Soil compaction was measured at 39 sample areas, measuring 7 different points for each on felling direction for two soil depths (down to 0-5 cm and 5-10 cm depth). To examine the impact of skidding on the skid road, soil compaction was also measured on skid roads, before and after ground skidding at the same sample areas, measuring 7 different points for each for the same soil depths.



Figure 2. Hand-held cone (30°) penetrometer

## Data Analysis

Soil compaction values measured in two different depths and areas were compared to determine the effect of tree felling and ground skidding activities in soil compaction by using analysis of student's t test. The student's t test was performed by using SPSS version 15.0 (SPSS Institute Inc., 2008) to evaluate whether there is enough evidence that the means of soil compaction measurements differ at 95% significance levels for before and after tree felling and ground skidding activities.

## RESULTS AND DISCUSSION

In Table 1, some descriptive statistics were presented for soil compactions measured for different logging activities and soil depths. The logged and unlogged areas have statistically significant different soil compaction values at 95% significant levels (Table 2). The mean soil compactions measured, before and after tree felling are; 2.1464 kgf/cm<sup>2</sup> and 3.9040 kgf/cm<sup>2</sup> for 0-5 cm depth (t-value=-33.913, df=544, p<0.05), 7.3833 kgf/cm<sup>2</sup> and 8.6583 kgf/cm<sup>2</sup> for 5-10 cm depth (t-value=-26.095, df=544, p<0.05) respectively. The mean soil compactions measured, before and after ground skidding are; 6.9813 kgf/cm<sup>2</sup> and 10.2884 kgf/cm<sup>2</sup> for 0-5 cm depth (t-value=-36.444, df=544, p<0.05), 13.4926 kgf/cm<sup>2</sup> and 24.5825 kgf/cm<sup>2</sup> for 5-10 cm depth (t-value=-72.604, df=544, p<0.05) respectively. Soil compactions at logged areas were nearly two times greater than the unlogged areas, except tree felling values at 5-10 cm depth (Table 1). The results of FHO effects on soil compaction obtained in this study are similar to some studies; e.g. Ares et al. (2005); Donagh et al. (2010); Ampoorter et al. (2007); Horn et al. (2004); Makineci et al. (2007) and Demir (2007).

Table 1. The soil compaction content at the unlogged and logged areas

Depths (cm)	Felling				Skidding			
	0-5		5-10		0-5		5-10	
Statistics	Pre-Felling	Post-Felling	Pre-Felling	Post-Felling	Pre-Logging	Post-Logging	Pre-Logging	Post-Logging
Minimum	1.09	2.17	6.36	6.67	5.58	11.28	11.78	12.09
Maximum	2.95	5.43	8.22	10.08	8.61	12.71	15.19	29.30
Mean	2.1464	3.9040	7.3833	8.6583	6.9813	10.2884	13.4926	24.5825
Std. Error	0.02972	0.04246	0.02594	0.04140	0.04430	0.07919	0.05982	0.14054
Std. Deviation	0.49098	0.70160	0.42857	0.68411	0.73199	1.30851	0.98847	2.32213
Variance	0.241	0.492	0.184	0.468	0.536	1.712	0.977	5.392

Table 2. Student's t test results at 95% significant levels for soil compaction comparisons in different logged activities and soil depth

Logging activities and soil depth	df	t-value	p
Soil compactions measured in 5 cm soil depth for felling activities	544	-33.913	<0.05
Soil compactions measured in 10 cm soil depth for felling activities	544	-26.095	<0.05
Soil compactions measured in 5 cm soil depth for skidding activities	544	-36.444	<0.05
Soil compactions measured in 10 cm soil depth for skidding activities	544	-72.604	<0.05

## CONCLUSIONS

Forest harvesting activities, carried out in Yenice Forest District, increased compaction of soil layers; 82% for 0-5 cm depth and 17% for 5-10 cm depth at tree felling, 47% for 0-5 cm depth and 82% for 5-10 cm depth at ground skidding. Tree felling activities caused higher soil compaction effect at topsoil layer (0-5 cm) than lower ones. However, ground skidding activities engendered lower soil compaction effect at topsoil layer (0-5 cm) than lower ones. These relationships can be explained by tree felling direct impact on topsoil, and by splitting of the upper soil layer at ground skidding. Placement of harvesting waste in places of forwarders' and harvesters' passages might be a good solution to minimise soil compaction (Gebauer et al. 2012).

## ACKNOWLEDGEMENT

This study was supported financially by the Scientific Research Projects Fund of Çankırı Karatekin University (Project No: BAP-2011-02).

## REFERENCES

- Agherkakli, B., Najafi, A. and Sadeghi, S.H. 2010. Ground based operation effects on soil disturbance by steel tracked skidder in a steep slope of forest. *Journal of Forest Science*, 56 (6): 278–284.
- Ampoorter, E., Goris, R.W.M., Cornelis, W.M. and Verheyen, K. 2007. Impact of mechanized logging on compaction status of sandy forest soils. *Forest Ecology and Management*, 241: 162–174.
- Ampoorter, E. 2011. Soil compaction due to mechanized forest harvesting: quantification of ecosystem effects and exploration of recovery potential. PhD thesis, Ghent University, Ghent, Belgium. ISBN-number: 978-90-5989-430-3, 189 p.
- Anonymous, 2008. Ankara Orman Bölge Müdürlüğü, Ilgaz Orman İşletme Müdürlüğü, Yenice Orman İşletme Sefliği Amenajman Planı (1996-2015).
- Ares, A., Terry, T.A., Miller, R.E., Anderson, H.W. and Flaming, B.L. 2005. Ground-based forest harvesting effects on soil physical properties and Douglas-fir growth. *Soil Science Society of American Journal*, 69: 1822–1832.
- Corns, I.G. 1998. Compaction by forestry equipment and effects on coniferous seedling growth on four soils in the Alberta foothills. *Canadian Journal of Forest Research*, 18: 75–84.
- Demir, M., Makineci, E. and Yılmaz, E. 2007. Investigation of timber harvesting impacts on herbaceous cover, forest floor and surface soil properties on skid road in an oak (*Quercus petraea* L.) stand. *Building and Environment*, 42: 1194–1199.
- Donagh, P.M., Rivero, L., Garibaldi, J., Alvez, M., Cortez, P., Marek, M., Erbetta, D., Fernández, R., Phar, N. and Toma, T. 2010. Effects of selective harvesting on traffic pattern and soil compaction in a subtropical forest in Guarani, Misiones, Argentine. *Scientia Forestalis*, 38 (85): 115-124.
- Eliasson, L. 2005. Effects of forwarder tyre pressure on rut formation and soil compaction. *Silva Fennica* 39 (4): 549–557.
- Gebauer, R., Neruda, J., Ulrich, R. and Martinková, M. 2012. Soil compaction - impact of harvesters' and forwarders' passages on plant growth, *Sustainable Forest Management - Current Research*, Dr. Julio J. Diez (Ed.), ISBN: 978-953-51-0621-0, 454 p.
- Grace, J.M.I., Skaggs, R.W. and Cassel, D.K. 2006. Soil physical changes associated with forest harvesting operations on an organic soil. *Soil Science Society of America Journal*, 70: 503–509.
- Göl, C., Çakır, M. and Baran, A. 2010. Comparison of soil properties between pure and mixed Uludağ fir (*Abies nordmanniana* ssp. *Bornmülleriana* Mattf.) stands in Ilgaz Mountain National Park. *Ekoloji*, 75: 33-40.
- Grigal, D.F. 2000. Effects of extensit forest management on soil produktivity. *Forest Ecology and Management*, 138:167-185.
- Hutchings, T.R., Moffat, A.J. and French, C.J. 2002. Soil compaction under timber harvesting machinery: a preliminary report on the role of brush mats in its prevention. *Soil Use and Management*, 18: 34-38.
- Jordan, D., Ponder, F. Jr. and Hubbard, V.C. 2003. Effects of soil compaction, forest leaf litter and nitrogen fertilizer on two oak species and microbial activity. *Applied Soil Ecology*, 23: 33–41.
- Junior, M.S.D, Fonseca, S., Júnior, C.F.A. and Silva, A.R. 2007. Soil compaction due to forest harvest operations. *Pesq. agropec. bras.*, Brasília, 42 (2): 257-264.
- Jurgensen, M.F., Harvey, A.E., Graham, R.T., Page-Dumroese, D.S., Tonn, J.R., Larsen, M.J. and Jain, T.B., 1997. Impacts of timber harvesting on soil organic matter, nitrogen, productivity, and health of Inland Northwest Forests. *Forest Science*, 43: 234-251.
- Korb, J.E. 2011. The effect of tree harvesting on soil resistance to penetration (Compaction): Bio Fuel Project, Pagosa Springs Ranger District, San Juan National Forest, Colorado, Pre-Treatment Report, 30 p.
- Kozłowski, T.T. 1999. Soil compaction and growth of woody plants. *Scandinavian Journal of Forest Research*, 14 (6): 596-619.

- Lister, T.W. 1999. Forest harvesting disturbance and site preparation effects on soil processes and vegetation in a young pine plantation. MSc-Thesis, Faculty of the Virginia Polytechnic Institute and State University, 104 p.
- Lotfalian, M. and Bahmani, H. 2011. Effects of ground based skidding system on soil compaction and herbaceous species in a Hyrcanian Forest. *European Journal of Scientific Research*, 61 (4): 601-606.
- Lousier, J.D. 1990. Impacts of forest harvesting and regeneration on forest sites. Land Management Report Number 67, ISSN 0702-9861, ISBN 0-7718-8927-5, Research Branch, Ministry of Forests, 31 Bastion Square, Victoria, B.C. 92 p.
- Makineci, E., Demir, M., Comez, A. and Yilmaz, E. 2007. Long-term harvesting effects on skid road in a fir (*Abies bornmulleriana* Mattf.) plantation forest. *Building and Environment*, 44: 1538–1543.
- Melemez, K., Tunay, M. and Tuna, E. 2013. A comparison of productivity in five small-scale harvesting systems. *Small-scale Forestry*, 12 (1), ISSN 1873-7617 DOI:10.1007/s11842-013-9239-1, 371 p.
- Murphy, G., Firth, J.G. and Skinner, M.F. 2004. Long-term impacts of forest harvesting related soil disturbance on log product yields and economic potential in a New Zealand forest. *Silva Fennica* 38 (3): 279–289.
- Naghdi, R., Bagheri, I., Akef, M. and Mahdavi, A. 2007. Soil compaction caused by 450C Timber Jack wheeled skidder (Shefarood forest, northern Iran). *Journal of Forest Science*, 53 (7): 314–319.
- Najafi, A., Solgi, A. and Sadeghi, S.H. 2009. Soil disturbance following four wheel rubber skidder logging on the step trail in the north mountainous forest of Iran. *Soil & Tillage Research*, 103: 165–169.
- Özgöz, E. and Okursoy, R. 2001. Relations between tractor rubber tire pressure and soil compaction. *Tarım Bilimleri Dergisi*, 7 (4): 75-82.
- Rohand, K., Al Kalb, A., Herbauts, J. and Verbrugge, J.C. 2004. Changes in some mechanical properties of loamy soil under the influence of mechanized forest exploitation in a beech forest of central Belgium. *Journal of Terramechanics*, 40: 235–253.
- Startsev, A.D. and McNabb, D.H. 2000. Effects of skidding on forest soil infiltration in west-central Alberta. *Canadian Journal of Soil Science*, 80: 617–624.
- Tan, X., Chang, S. X. and Kabzems, R. 2005. Effects of soil compaction and forest floor removal on soil microbial properties and N transformations in a boreal forest long-term soil productivity study. *Forest Ecology and Management* 217: 158–170.
- Tan, X., Chang, S.X. and Kabzems, R. 2008. Soil compaction and forest floor removal reduced microbial biomass and enzyme activities in a boreal aspen forest soil. *Biology and Fertility of Soils*, 44: 471–479.
- Van Rees, K.C.J., Pennock, D.J. and Block, R. 2001. Impacts of forest harvesting on soil compaction and disturbance in north-central Saskatchewan, Final Report, Department of Soil Science 51 Campus Drive University of Saskatchewan Saskatoon, Saskatchewan S7N 5A8, 38 p.
- Wood, M.J., Caring, P.A. and Mofat, A.J. 2003. Improving the design of slash roads used to reduce soil disturbance during mechanized harvesting of coniferous forest plantations in the UK. *Journal of Forest Engineering*, 14: 11–23.



# RELATIONSHIPS BETWEEN EASTERN BEECH FORESTS STAND PARAMETERS AND LANDSAT ETM SPECTRAL RESPONSES IN TURKEY

Ayhan ATEŞOĞLU<sup>1</sup>, Metin TUNAY<sup>1</sup>

<sup>a</sup>Department of Forest Engineering, Faculty of Forestry, Bartın University, 74100, Bartın, Turkey

## ABSTRACT

This paper explores relationships between forest stand parameters and Landsat Enhancement Thematic Mapper (ETM), atmospheric correction applied, spectral responses thorough analyses of study area in Mugada, Bartın and its vicinity where natural beech (*Fagus orientalis* L.) stands. ETM bands and many vegetation indices were examined thorough integration of spectral responses and field vegetation inventory data. Pearson's correlation coefficients were used to interpret relationships between forest stand parameters and TM data. Besides, regression analysis method for the development of multi linear regression models was used. This study concludes that vegetation indices such as KT2 (greenness of the tasselled transform), Leaf Area Index (LAI), Fraction of Photosynthetically Active Radiation (FPAR), Soil Adjusted Vegetation Index (SAVI) and PC1 (the first component in a principal components analysis) were significantly correlated with forest stand parameters. Some vegetation indices, such as Normalized Difference Vegetation Index (NDVI) and KT3 (Wetness of the tasselled transform), were not significantly with selected forest stand parameters. To estimate the stand parameters by making use of the relations between stand parameters and remote sensing data multiple linear regression models were formed using stepwise regression analysis method. As the resulting product, thematic maps were produced concerning basal area, tree height and volume.

**Key words:** Atmospheric correction, *Fagus orientalis* L., forest stand parameters, spectral response, vegetation indices

## INTRODUCTION

It is important to determine the existing potential of natural and cultural resources. In order to determine this potential, it is necessary to reveal the natural values of the area. Thus, the fact of utilizing areas will be able to be assessed by the demands of the society and with sustainable approaches. Nowadays a total 17.5% of a forest ecosystem of 20.7 million hectare, of which nearly half is fertile, is evaluated as protected area, whereby biological diversity constitutes 1.8% of it (Konukçu, 2001; İnan, 2004). Natural resources rapidly decrease as a result of the increase of consumption in relation to economical development. Forest stand parameters, such as volume, diameter and height are important data needed to assess forest resources. In this context, in projects regarding the determination of forest stands and the actual presence and potential of related resources, the usage of purpose conforming remote sensing data will ensure the acquisition of fast and low-cost data/information (Kachhwala, 1985).

Stand diameter and volume are the characteristics of a forest have most commonly been estimated using computational remote sensing methods. The correctness of the performed image processing methods is very important in the determination of the relation between the features of a stand by the aid of satellite image data. As a method, it is targeted to achieve the desired results by the models, established by using the statistical relations between satellite image data and ground methods. Using segmentation 3 × 3 pixel windows, Hall et al., (2006) image height model had an adjusted R<sup>2</sup> of 0.65 and in parallel with the stand volume was within 4 m<sup>3</sup>/ha of field plot values and Lu et al., (2004) found strongly correlated between forest stand parameters and six Thematic Mapper (TM) bands, many vegetation indices such as Principal Component Analysis, Tasselled Cap Transform, Albedo etc. In another study (Freitas et al., 2005), three vegetation indices (Normalized Difference

\*Yazışma yapılacak yazar: aatesoglu@yahoo.com

Makale metni 12.06.2013 tarihinde dergiye ulaşılmış, 02.07.2013 tarihinde basım kararı alınmıştır.

Vegetation Index (NDVI), Moisture Vegetation Index (MVI) were correlated with measurements of forest structure (tree diameter, tree height and basal area). The vegetation indices are most often used in many applications relevant to analysis of forest stand parameters, however depending on the use of specific biophysical parameters and the characteristics of the study area (Gong et al., 1995; Roy and Ravan, 1996; Eklund et al., 2001)

By the increase of the geometric resolutions of satellite image data, more accurate and effective information containing satellite images are concentrated in particularly biomass mapping and the determination of biophysical parameters of stands. The results of the specifications of the stand, obtained by ground methods, acquired by statistical associations, using different satellite images and corrections, have opened the way for remote sensing techniques and calculations of forest stand parameters in particular. Aboveground biomass (AGB) was strongly related to near-infrared reflectance and NDVI using Landsat 7 Enhancement Thematic Mapper (ETM) data through multiple regression analyses to produce an initial biomass map (Zheng et al., 2004). Fazakas et al., (1999) was used Landsat TM to estimate tree biomass and volume. This estimation method is *k*NN method (Reese et al., 2002; Makale and Pekkarinen, 2004; McRoberts and Tomppo, 2007). Using high spatial resolution images, Astola et al., 2003 found relationship of belonging to stem volume, average stem diameter, stem number and tree species proportions. Besides, using lidar and radar systems, it was predicted forest stand parameters and constructed regression models (Holmgren et al., 2003; Lefsky et al., 2005; Holström and Fransson 2003)

In this study, a geometric correction process is applied to the ETM satellite image of July 4th 2000 and converted into the related projection system. In the work, an atmospheric correction process was applied regarding all areas, in which remote sensing data was used, which could also eliminate the negative effects due to the atmosphere on the image data and negative effects of the topography due to the inclination and aspects. For the work area, a basin with a weighted natural beech (*Fagus orientalis* L.) stand was selected. In this study, the relationships between forest stand parameters and Landsat ETM spectral responses thorough analyses of study area was explored and the results were evaluated

## **MATERIALS AND METHODS**

The study area comprises 1750 hectares in the north of the Western Black-Sea Region and 13 km northwest of Bartın province centre located at 41° 37' 44" northern latitude and 32° 11' 59" eastern longitude. (Figure 1). The summers are calm and the winters are snowy and rainy in the region. The vegetation term (the warm period, during which the average temperature is +10 °C and above according to Rubner (1960)) lasts seven months (April-October). The relative humidity of the study area, which has a rather humid climate, is about 80%.

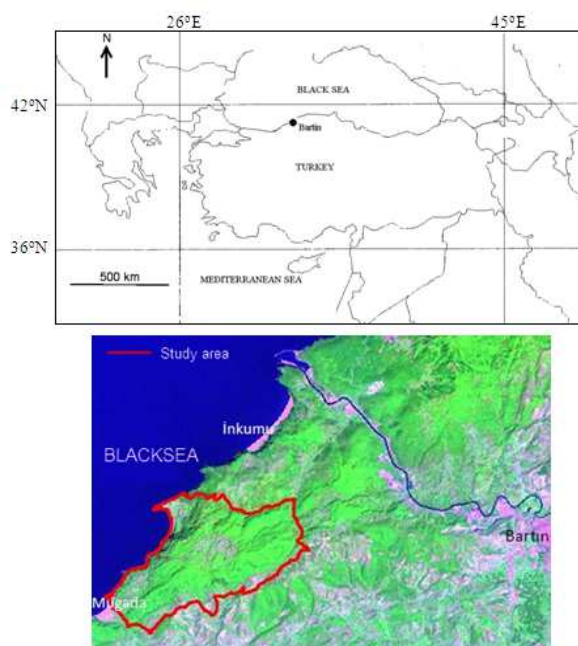


Figure 1. Study area and Thematic Mapper images.

The average altitude of the study area is 200 m. Examining the elevation distribution of the study area according to Özhan (1991), 40% of the area is sloped, 33% is steep and 19% is very steep. Respecting the aspect groups, it is seen that the area has nearly equal areal distribution regarding each aspect. Nearly 85% of the study area is covered with forests, constituted by the dominant Beech (*Fagus orientalis* L.), followed by, depending particularly on the aspect, horn beech, sporadic chestnut and lime trees along with pseudo-maquis (Table 1).

Table 1. Biophysical and land use characteristic in study area.

Soil types	Principal geological formations of research area consist of limestone and andesite rock. These parent materials are quickly dissociated and rich in Ca. the soil of the area is fine-texture and soil type is clay.
Landscape characteristics	Due to take place in the Black Sea coastal region, study area and close district extensive deforestation occurred in past 30-40 years. Mature <i>Fagus orientalis</i> L. forests are distributed along rugged terrain
Main tree species	<i>Fagus orientalis</i> , <i>Castanea sativa</i> (individual case), <i>Tilia tomentosa</i> (individual case), <i>Quercus sp.</i> (southern aspect)
Average vegetation age	Most successional vegetations are between 35 and 50 years.
Vegetation stand structure	Relatively simple
Average periodic increment (10 years)	About 24.30 m <sup>3</sup> /ha
Climate conditions	Rainfall: 1023.6 mm Rainy Season: September-February
Topographic variability	Rugged terrains. The elevation bands from 50 to 400 m.

**Reference data and analysis:** In the study, two topographic maps of the scale 1:25000 (Zonguldak E28-d2, E28-d3) and stand type maps of the Central Forestry Department of the Bartın Forestry Directorate were used. The maps were used at the control of the ground method data and the geometric correction of satellite images. Landsat ETM+ satellite data (WRS: Path 178 and Row 31) was acquired for July 4, 2000, georeferenced to UTM zone 36 projection based on the ED50 datum. Atmospheric correction procedure was applied to all Landsat ETM+ bands except the thermal. In order to generate the numeric terrain model of the study area, the contour lines at each 10 m on the topographic map were digitized. The altitude values of the contour lines were entered into a computer environment. By utilizing the contour lines the Digital Terrain Model (DTM) was generated for atmospheric correction (Figure 2).

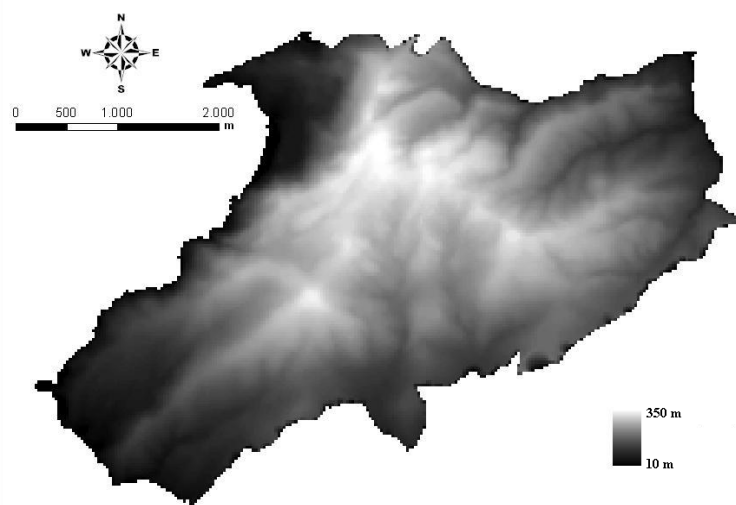


Figure 2. Digital terrain model.

In order to collect ground inventory data, the systematic sampling method was used and in distances of  $300 \times 300$  m at a size of total  $400 \text{ m}^2$ , it was planned to take 64 samples in total. However, during the field studies, performed in July-August 2007, a total of 23 sample areas were cancelled due to the topography and the disturbance of the present homogeneity (as a result of illegal cuts) at some of the selected trial areas, and the measurement of a total of 1600 trees at 41 sample areas was performed (Figure 3). The centre coordinates of each sample area were recorded in the respective coordinate system and datum by the aid of GPS (Global Positioning System). The correctness of each coordinate value obtained from the terrain was controlled on topographic maps of 1:25000, a stand map of the same scale and geometric corrected satellite image data. Since the study to be performed will be realized based on spectral reflection values with a  $3 \times 3$  window size (surrounding the field plot), care was taken that the close proximity regarding each sample area has similar features, meaning on the homogeneity of the vegetation structure.

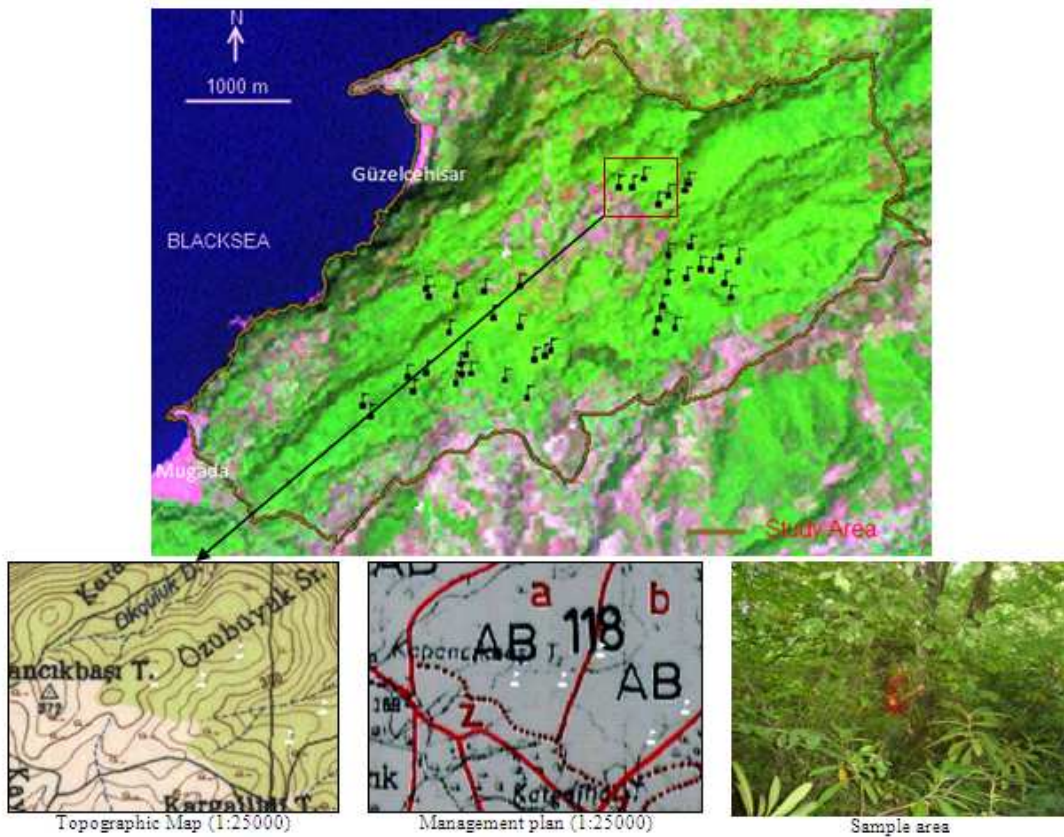


Figure 3. Positions of the sample areas.

In the measurement of stands, the stand or stand type at a definite location is deemed to be a population. The units of the population are constituted by trees. Forest stand is determined by features like the number of trees and their distribution, basal area, tree volume, mean diameter etc. (Kalıpsız, 1993). The trees within each sample were identified. Diameter at Breast Height (DBH) of all trees in the sample areas a diameter higher than 8 cm (DBH  $\geq 8$  cm) were measured. DBH was measured with a tree calliper bilaterally and averaged. Besides, the height of the trees in the trial area was determined by utilizing the “Blume Leiss” height gauge. Tree heights at each diameter step were attempted to be measured at as equal a number as possible. Five forest stand parameters were calculated using following formulas.

$$\text{Number of trees (NUM): } \text{Number of trees} = \sum \text{Number of trees} \times A \text{ (N/ha)} \quad (1)$$

$$\text{Average Stand Diameter (ASD): } \bar{d} = \frac{\sum d_i}{n} \text{ (cm)} \quad (2)$$

$$\text{Basal Area (BA): } G_{1.30} = \sum \frac{\pi}{4} d_{1.30}^2 \text{ (m}^2/\text{ha)} \quad (3)$$

$$\text{Average Stand Height (ASH): } \bar{h} = \frac{\sum h_i}{n} \text{ (m)} \quad (4)$$

$$\text{Stand Volume (VOL): } V = \sum V_i \text{ (m}^3/\text{ha)} \quad (5)$$

**Image pre-processing and advance of vegetation indices:** Geometrical rectifications, radiometric and atmospheric correction of remotely sensed data are often required for many applications (Lu et al., 2002). The satellite images used in the study were received with only the failures due to the sensor being corrected, but the environmental caused failures due to the atmosphere and topography and due to the object were not corrected. For this purpose, geometric correction process was performed in order to establish the balancing model of the relation between the image coordinate system and earth coordinate system (Lillesand and Kiefer, 2004). In this research, ETM image were geometrically rectified into UTM projection using control points taken from topographic maps at 1:25000 scale. The nearest neighbourhood method was used and a root-mean square error of

less than 0.8 pixel was obtained for ETM image. Due to the fact that as the sampling method the pixels obtained from the original image were associated to the nearest pixel location on the numerical corrected image, nearest neighbourhood resampling technique affecting the original pixels the least was applied.

The Atmospheric Correction was applied to ETM image data (Chaves, 1996; Ouaidrari et al., 1999; Zhang et al., 1999; Song et al., 2000; Liang et al., 2001) which method is suitable for a specific project depends on the objective of the study and atmospheric data available. The most valuable data to be obtained from remote sensing sensors is sun radiation within a definite band, reflected from any object on the Earth's surface or the emitted thermal radiation (Sarikaya, 2006). Atmospheric correction is an application in order to obtain data regarding the real reflection values of surface temperatures and objects on satellite images. The atmospheric correction software (ATCOR), used in the study, has been developed by Dr. R. Richter from the German Aerospace Centre (Richter 1996; Richter 1998; Richter 2008). The terrains in this study area are dominantly rugged, hence, the ATCOR-3 module of the PCI Geomatica 9.1® was used (PCI Guide, 2005). The gain and offset, and sun elevation angle were obtained from the ETM image header file. Looking at the configuration of the atmospheric correction parameters (ATCOR-3) used in the study, the parameters; aerosol types, atmospheric definition, solar zenith and azimuth, visibility, adjacency and calibration (Table 2).

Table 2. Used to study the technical characteristics of Landsat ETM+ and parameters of atmospheric correction procedures.

Acquisition Date	2000-07-04
Sensor	Landsat-7 ETM+
Band Combination	1,2,3,4,5,7
Location	Ul Lat = 42.7243004 Ul Lon = 31.1021290 Ur Lat = 42.3644676 Ur Lon = 33.5827637 Ll Lat = 41.1399345 Ll Lon = 30.7223053 Lr Lat = 40.7881851 Lr Lon = 33.1447487
Sun_Azimuth	127.7101082
Sun_Elevation	63.1439777
DTM	10 m
Aerosol Type	Rural
Atmospherical Condition	Humid
Calibration File	Geomatica_V91\Atcor\Cal\Landsat7\ Etm_Std1
Visibility	25 km

After geometric rectification and atmospheric correction, a variety of vegetation indices were calculated for study area. These vegetation indices are summarized in Table 3. These included, SAVI, NDVI, LAI, FPAR (Baret and Guyot, 1991; Choudury, 1994), Surface Albedo, PCA and KT (Crist and Kauth, 1986) were applied (Table 3).

**Merging of field data end ETM spectral responses:** The sample data can be linked to ETM individual bands or the vegetation indices derived from ETM image to extract the spectral responses for each field plot. A plot size from the field was about 0.45 times image pixel size. In calculations in this study, the arithmetic means of radiance values within  $3 \times 3$  pixel window surrounding the target pixel were used for each Landsat ETM+ band and vegetation indices. It is provided that the mean pixel value for each image band and vegetation indices was computed from these homogeneous pixels. The Pearson's correlation coefficient analysis was utilized in the analysis of the relations between the forest stand parameters and ETM+ spectral response relationships. In order to be able to establish a model of the stand parameters, determined with measurements on the terrain, and independent variables, which were spectral reflection values of satellite image data, a multiple linear regression modelling was performed with the package statistics software SPSS 15.0. ® The models producing the highest adjusted  $R^2$  were determined as the best function to model stand structure.

Table 3. Selected remote sensing vegetation used in research

Vegetation Indices	Formula
NDVI	$\text{NIR-RED} / \text{NIR+RED}$
SAVI	$(\text{NIR-RED})/(\text{NIR+RED+L})(1+L)$ , $L=0.5$
PCA	-
KT Brightness (KT1)	$0.3037\text{ETM1}+0.2793\text{ETM2}+0.4743\text{ETM3}+0.5585\text{ETM4}+0.5082\text{ETM5}+0.1863\text{ETM7}$
Grenness (KT2)	$-0.2848\text{ETM1}+-0.2435\text{ETM2}+-0.5436\text{ETM3}+0.7243\text{ETM4}+0.0840\text{ETM5}+-0.1800\text{ETM7}$
Wetness (KT3)	$0.1509\text{ETM1}+0.1973\text{ETM2}+0.3279\text{ETM3}+0.3406\text{ETM4}+-0.7112\text{ETM5}+-0.4572\text{ETM7}$
LAI	$-1/a_2 \ln(a_0 - VI/a_1)$ , $(VI=SAVI)$ , $a_0=0.5$ , $a_1=0.65$ , $a_2=0.60$
FPAR	$C[1-A \exp(-B \text{LAI})]$ $A=1$ , $B=0.4$ , $C=1$
ALBEDO	$\text{ETM1}+\text{ETM2}+\text{ETM3}+\text{ETM4}+\text{ETM5}+\text{ETM7}$

## RESULTS

The correlation between the reflection values in the visible spectrum of ETM+ satellite was higher. Therefore, the red band, important for the vegetation indices, and infrared bands reflection values were used in the statistical analysis. Selected forest stand parameters were significantly related to some vegetation indices but no related ETM bands depending on the characteristics of the study areas. All of the data contained in the six bands ETM, except the thermal band, was squeezed into the three band component for PCA (Lillesand and Kiefer, 2004). Due to the fact that the information content of the first band resulted in 84% after the conversion of the PCA, the first band was used in this study. Selected forest stand parameters have correlations with ETM and vegetation indices reflectance values (for the full  $3 \times 3$  window) depending on the characteristics of the study area. Table 4 summaries the correlation coefficients between the selected stand parameters and ETM bands, vegetation indices in the study area.

Table 4. Correlation coefficients between forest stand parameters and ETM band, vegetation indices in the study area

	ETM 3	ETM 4	ETM 5	ETM 7	SAVI	NDVI	PCA
ASD	-.091	.067	-.040	-.058	.424(**)	.123	.355(*)
BA	-.029	.290	.183	.138	.693(**)	.116	.669(**)
ASH	.003	.189	.048	-.035	.570(**)	.074	.499(**)
CRC	.018	.207	.244	.191	.134	.006	.251
NUM	.080	.281	.244	.217	.497(**)	-.029	.505(**)
VOL	-.040	.243	.161	.123	.643(**)	.123	.590(**)
	KT1	KT2	KT3	ALBEDO	LAI	FPAR	
ASD	.457(**)	.487(**)	-.020	.411(**)	.392(*)	.380(*)	
BA	.590(**)	.792(**)	-.223	.708(**)	.761(**)	.755(**)	
ASH	.498(**)	.690(**)	-.066	.549(**)	.670(**)	.652(**)	
CRC	.087	.080	-.240	.220	.264	.276	
NUM	.359(*)	.513(**)	-.217	.500(**)	.570(**)	.569(**)	
VOL	.541(**)	.720(**)	-.220	.651(**)	.696(**)	.690(**)	

\*:  $P < 0.05$ , \*\*:  $p < 0.01$

The visible, near and middle infrared wavelengths were not significantly correlated with forest stand parameters; however, vegetation indices most and strong correlations correlation with selected stand parameters. Vegetation indices were most correlated with BA, ASH, VOL and NUM, but NDVI and KT3 were not significantly correlated with forest stand parameters. NDVI and KT3 have weak correlation with forest stand parameters due to homogeneity vegetation structure, land-use and canopy homogeneities in the study area. SAVI was



devotion (Std. Dt.) of 53.28 (Table 6). The models ( $R^2 \geq 50.00$ ) presented in Table 6 were used to generate basal area, stand height and stand volume image output (Figure 4).

Table 6. Regression models for estimation stand parameters

Regression Parameters ( $Y = B_0 + B_1X_1 + \dots B_nX_n$ )					
	$B_0$	$B_1X_1$	$B_2X_2$	$B_3X_3$	$B_4X_4$
ASD	-8.260	0.127(KT2)			
BA	-78.677	0.53(KT2)			
	-77.638	0.623(KT2)	-0.112(ETM4)		
	-67.067	0.467(KT2)	-0.152(ETM4)	0.168(ALBEDO)	
	-82.592	0.376(KT2)	-0.154(ETM4)	0.252(ALBEDO)	0.116(NDVI)
ASH	-18.781	0.170(KT2)			
	-17.718	0.196(KT2)	-0.051(ETM7)		
	-11.274	0.066(KT2)	-0.068(ETM7)	0.118(LAI)	
	-6.805	0.073(ETM7)	0.167(LAI)		
	-9.373	-0.115(ETM7)	0.179(LAI)	0.058(ETM3)	
NUM	-976.183	11.394(LAI)			
VOL	-576.479	3.73(KT2)			

## DISCUSSION

While BA, ASH and VOL of natural beech (*Fagus orientalis* L.) stands were significantly correlated to Landsat ETM+ band 3, 4, 7 and vegetation indices KT2, LAI, ALBEDO and NDVI (Table 5). Some vegetation indices, such as NDVI and KT3, were not significantly with selected forest stand parameters. Lu et al., (2004) concluded that linear transformed indices such as PC1, KT1 and ALBEDO were most strongly correlated with forest stand parameters (BA, ASD and ASH). In parallel to this work, NDVI and KT3 were weakly and not significantly correlated with selected forest stand parameters. Also, Lu et al., (2004) concluded that SAVI was not significantly correlated except with selected forest stand parameters (ASD and ASH) in Bragantina study area. But, SAVI was significantly correlated with selected forest stand parameters in this study. So, the SAVI was used for the generation of the LAI. For mapping of aboveground biomass and stand volume the pixel values within the  $3 \times 3$  pixel window surrounding the centre pixel of the field plot were averaged for each Landsat ETM+ band (Hall et al., 2006). The image height model had an adjusted  $R^2$  of 0.65 from ETM+ bands 3, 4 and 5. Also, correlation coefficients generated from tassle cap brightness, greenness and wetness were respectively  $R$ -values of -0.52, -0.53 and 0.45 (Statistically significant at  $p=0.05$ ). In this study, image height model had an adjusted  $R^2$  of 0.653 from ETM+ bands 3, 7 and vegetation indices LAI and correlation coefficients generated from tassle cap brightness, greenness and wetness were respectively  $R$ -values of 0.498, 0.69 and -0.066 (Statistically significant at  $p=0.05$ ). Hall et al., (2006) concluded that the study focused on method development to estimate stand parameters for conifer component due to the obvious dominance of conifer species. This study focused on method development to estimate select forest stand parameters for the deciduous component (dominance of deciduous species, mostly *Fagus orientalis* L.). The ratio and aspect of  $R$  values regarding tassle cap culminated in different due to the fact that site conditions and tree species.

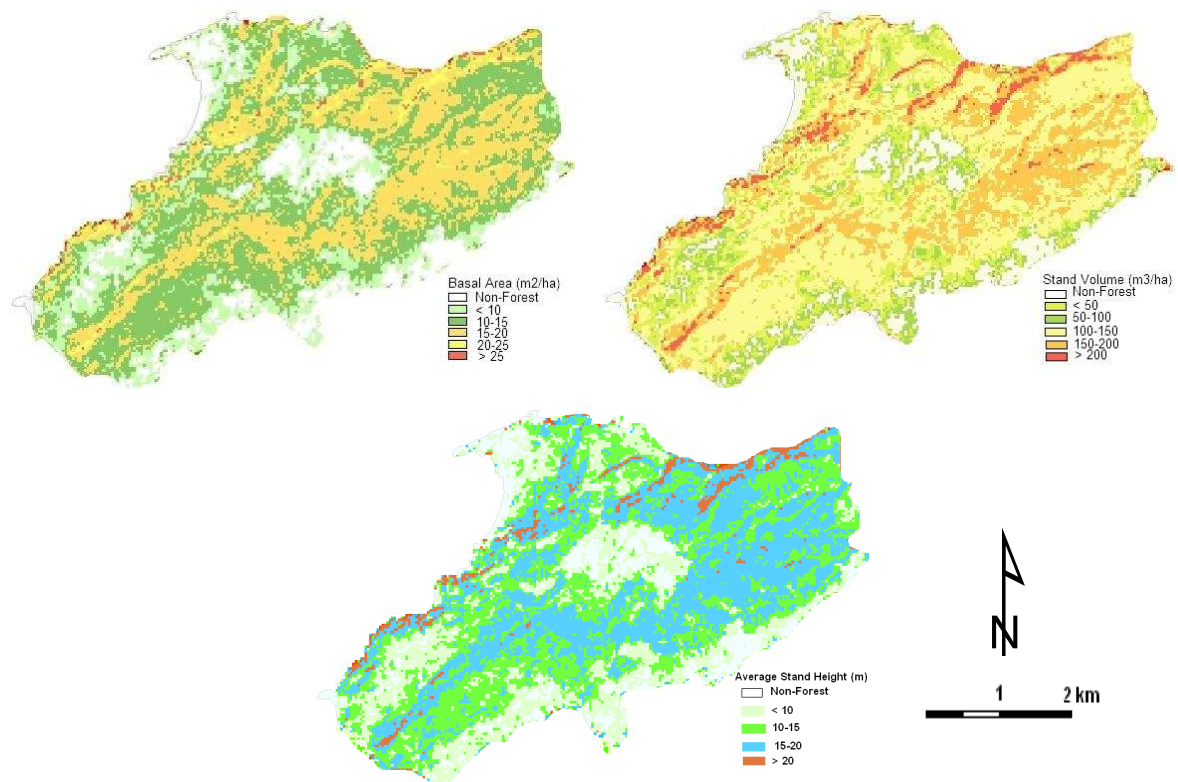


Figure 4. Modelled Basal Area, Stand Volume and Height estimates for the study area.

Freitas et al., (2005) concluded that three vegetation indices (normalized difference vegetation index (NDVI), moisture vegetation index using Landsat's band 5 (MVI5) and moisture vegetation index using Landsat's band 7 (MVI7)) were correlated with measurements of forest structure and models were also developed. At the same time, NDVI was not significantly with selected forest stand parameters for humid and dry seasons. In this study, despite its weak statistical relationships with forest stand parameters, NDVI contributed the established model. The accuracy of elevation and aspect analysis (Carter, 1992) used for atmospheric correction procedure depends on the DTM. In general, DTM resolution 0.25 times the geometric resolution of the satellite image data is enough (Goodenough et al., 1990). In this study, DTM resolution was ~0.35 times the geometric resolution of the Landsat ETM+. The desired DTM resolution ratio increases the accuracy of the results.

## CONCLUSION

By the utilization of the Landsat 7 ETM+ image data, vegetation indices KT2 (greenness of the tasselled transform), Leaf Area Index (LAI), Fraction of Photosynthetically Active Radiation (FPAR), ALBEDO, Soil Adjusted Vegetation Index (SAVI) and PC1 (the first component in a principal components analysis) were significantly correlated with forest stand parameters (especially as Basal Area, Average Stand Height and Stand Volume). In order to be able to make definitions regarding the forest stand based on the relations between remote sensing data and the stand parameters, spectral based regression models were developed. Multiple linear regression models were generated by using the staged regression analysis (Stepwise Selection) method regarding the estimation of stand parameters by the utilization of the relations between the stand parameters and remote sensing data. Models developed for small sampling land plots were applied on the whole of the study area. In future, the study for beech (*Fagus orientalis* L.) stands is going to set an example in ways: providing faster and less expensive observation or measurement, providing inventory estimates, and producing forest thematic maps. The accuracy and practicability of the study depends to different biophysical environment of study area. Also, the deficiencies of available data –especially DEM data used as template in atmospheric correction- were factor in the accuracy study. It is a fact that forest inventory studies at regional and global scales will be valuable by this method regarding time and costs.

## REFERENCES

- Astola, H., Bounsaythip, C., Ahola, J., Häme, T., Parmes, E., Sirro, L., Veikkanen, B., 2004. HighForest – Forest parameter estimation from high resolution remote sensing data. In: The International Archives of the Photogrammetry, Remote Sensing and Spatial Information Sciences, Istanbul, Turkey, Vol. XXXV, Part B, pp. 335-341.
- Baret, F., Guyot, G., 1991. Potentials and limits of vegetation indexes for LAI and APAR assessment. *Remote Sensing of Environment*, 35 (2–3), 161–173.
- Chaves, S., 1996. Image-based atmospheric corrections revisited and improved. *Photogrammetric Engineering & Remote Sensing*, 62, 1025–1036.
- Choudhury, B.J., 1994. Synergism of multispectral satellite observation for estimating regional land surface evaporation. *Remote Sensing of Environment*, 49, 264-274.
- Crist, E.P., Kauth, R.J., 1986. The tasseled cap demystified. *Photogrammetric Engineering and Remote Sensing*, 52 (1), 81-86.
- Eklundh, L., Harrie, L., Kuusk, A., 2001. Investigating relationships between Landsat ETM sensor data and leaf area index in a boreal conifer forest. *Remote Sensing of Environment*, 78, 239–251.
- Fazakas, Z., Nilsson, M., Olsson, H., 1999. Regional forest biomass and wood volume estimation using satellite data and ancillary data. *Agricultural Forest meteorology*, 98-99, 417-425.
- Freitas, S.R., Mello, M.C.S., Cruz, C.B.M., 2005. Relationship between forest structure and vegetation indices in Atlantic Rainforest. *Forest Ecology and Management*, 218, 353-362.
- Gong, P., Pu, R., Miller, J.R., 1995. Coniferous forest leaf area index estimation along the Oregon transects using compact airborne spectrographic imager data. *Photogrammetric Engineering & Remote Sensing*, 61, 1107–1117.
- Goodenough, D.G., Deguisel, J., Robson, M.A., 1990. Multiple expert systems for using digital terrain models. In: *Proceedings of IGARS'90*, Washington, pp. 96.
- Hall, R., J., Skakun, R., S., Arsenault, E., J., Case, B., S., 2006. Modelling forest stand structure attributes using Landsat ETM data: Application to mapping of aboveground biomass and stand volume. *Forest Ecology and Management*, 225, 378-390.
- Holmgren, J., Nilsson, M., Olsson, H., 2003. Estimation of tree height and stem volume on plots using airborne laser scanning. *Forest Science*, 49, 419–428.
- Holström, H., Fransson, J.E., 2003. Combining remotely sensed optical and radar data in kNN-estimation of forest variables. *Forest Science*, 49, 409–418.
- İnan, M., 2004. Remote sensing data for determining forest resources. Ph. D. Thesis. İstanbul University.
- Kachhwala, T.S., 1985. Temporal monitoring of forest land for change detection and forest cover mapping through satellite remote sensing. In: *Proceedings of the International 6th Asian Conference on Remote Sensing*, Hyderabad, pp. 77-83.
- Kalıpsız, A., 1993. Forest mensuration. Forest Faculty, No: 3793, İstanbul University.
- Konukçu, M., 2001. Forests and Forestry. T. R. Ministry of Development, No: 2630.
- Lefsky, M.A., Hudak, A.T., Cohen, W.B., Acker, S.A., 2005. Patterns of covariance between forests stand and canopy structure in the Pacific Northwest. *Remote Sensing of Environment*, 95, 517-531.
- Liang, S., Fang, H., Chen, M., 2001. Atmospheric correction of Landsat ETM+ land surface imagery—part 1: methods. *IEEE Transactions on Geosciences and Remote Sensing*, 39, 2490-2498.
- Lillesand, T.M., Kiefer, R.W., 2004. Remote sensing and image interpretation. New York: John Wiley & Sons.

- Lu, D., Mausel, P., Brondizio, E., Moran, E., 2004. Relationships between forest stand parameters and Landsat TM spectral responses in the Brazilian Amazon basin. *Forest Ecology and Management*, 198, 149-167.
- Makela, H., Pekkarinen, A., 2004. Estimation of forest stands volumes by Landsat TM imagery and stand-level field-inventory data. *Forest Ecology and Management*, 196, 245–255.
- McRoberts, R.E., Tomppo, E.O., 2007. Remote sensing support for National Forest Inventories. *Remote Sensing of Environment*, 110 (4), 412-419.
- Özhan, S., 1991. Land-use technique. M. Sc. Thesis. Istanbul University.
- PCI Guide, 2005. *Geomatica focus user guide*. Canada: PCI Geomatica.
- Quaidrari, H., Vermote, E.F., 1999. Operational atmospheric correction of Landsat TM data. *Remote Sensing of Environment*, 70, 4-15.
- Reese, H., Nilsson, M., Sandstrom, P., Olsson, H., 2002. Applications using estimates of forest parameters derived from satellite and forest inventory data. *Computers and Electronics in Agriculture*, 37, 37-55.
- Richter, R., 1996. A spatially adaptive fast atmospheric correction algorithm. *International Journal Remote Sensing*, 17, 1201-1214.
- Richter, R., 1998. Correction of satellite imagery over mountainous terrain applied. *Optics*, 37, 4004-4015.
- Richter, R., 2008. Atmospheric/Topographic correction for satellite imagery. *ATCOR-2/3 user guide*. Wessling: DLR IB 565-01/08.
- Roy, P.S., Ravan, S.A., 1996. Biomass estimation using satellite remote-sensing data—an investigation on possible approaches for natural forest. *Journal of Biosciences*, 21, 535–561.
- Rubner K (1960) *Die pflanzengeographischen grundlagen des waldbaues*. Berlin: Neumann Verlag.
- Sarıkaya, Ö.V., 2006. Water quality analysis in the Golden Horn (Haliç) with the help of Ikonos imagery. M. Sc. Thesis. Istanbul University.
- Song, C., Woodcock, C.E., Seto, K.C., Lenney, M.P., Macomber, S.A., 2001. Classification and change detection using Landsat TM data: When and how to correct atmospheric effects? *Remote Sensing of Environment*, 75, 230-244.
- Zhang, M., Carder, K., Muller-Karger, F.E., Lee, Z., Goldgof, D.B., 1999. Noise reduction and atmospheric correction for coastal applications of Landsat Thematic Mapper imagery. *Remote Sensing of Environment*, 70, 167-180.
- Zheng, D., Rademacher, J., Chen, J., Crow, T., Bresee, M., Le Moine, J., Ryu, S., 2004. Estimating aboveground biomass using Landsat 7 ETM+ data across a managed landscape in northern Wisconsin, USA. *Remote Sensing of Environment*, 93, 402-411.



# THE FACTORS AFFECTING THE SUCCESS OF NATURAL REGENERATION EFFORTS IN KASTAMONU-ARAÇ REGION'S BLACK PINE (*Pinus nigra* Arnold. subsp. *pallasiana* (Lamb.) Holmboe) STANDS

İlhan YAZGAN<sup>1</sup>, \*Halil Barış ÖZEL<sup>2</sup>

<sup>1</sup>Forest Engineering, İznik Forest Range District, İznik/Bursa

<sup>2</sup>University of Bartın, Faculty of Forestry, Department of Silviculture, Bartın-TURKEY

\*Corresponding author: [halilbarisozel@yahoo.com](mailto:halilbarisozel@yahoo.com)

## ABSTRACT

In this study, where the habitat and the factors affecting the success of natural regeneration efforts performed in different years in Araç region have been investigated has been completed in year 2012.

Within the scope of research, in order to determine the most important factors affecting the success of the black pine natural regeneration efforts, the factor analysis was utilized. As a result of factor analysis, it has been found that physiographic conditions, physical soil properties, organic matter, climate, and outer soil status factors affect the success of regeneration efforts.

**Keywords:** Black pine, natural regeneration, regeneration success

## 1. INTRODUCTION

Because of increasing population and the industrialization, the decrease of natural forest resources still continue in 21<sup>st</sup> century. Especially for satisfying the high amount of demand increase especially for wood raw material, 180 million hectare of natural forests and plantation forests of developing countries have been destroyed between 1980 and 1995 as a result of excessive usage from forest resources. This amount has reached 200 million hectare nowadays (İlter and Ok 2004).

Because of various habitat conditions depending on existence of various climate and physiographic conditions, our country has biologically and economically rich pure and mixed natural forest resources in terms of both of tree species and stand establishments. According to data of year 2004, total forest surface area of our country is 21,188,747 ha. This equals 27.2% of total surface area of our country and is a very important amount. From the qualitative aspect; 50% of our forest resources (10,621,221 ha) is normal bosket and normal coppice forest, and 50% (10,567,526 ha) ruined bosket and coppice forest (Anon. 2006). As can be understood from those data, most of our forest resources have been spoiled as a result of biotic and abiotic factors such as excessive usage, wrong technical interventions, fires, snow, and disaster damages. So their productivity has been decreased. Depending on that decrease in productivity of our natural forest resources, the amount of product obtained from them has gradually decreased year by year. According to recent data, 15-15 million m<sup>3</sup> products can be obtained from forests of our country. This value means an increase of 0.750-0.800 m<sup>3</sup>/ha per year. When comparing that value with that of countries such as Romania (2.6 m<sup>3</sup>/ha), Greece (2.1 m<sup>3</sup>/ha) and old Yugoslavia (2.7 m<sup>3</sup>/ha), it is very low (Ürgenç 1998). The significant increase of this rate and consequently the ability to increase the share of forestry industry in our national income can only be possible through successful regeneration (natural and artificial) efforts on our ruined natural forest resources of which the productivity has been decreased, their rehabilitation in terms of quality and quantity, and making unproductive forest areas more productive via forestation efforts. This point takes place in definition of silviculture which is adopted by many scientists as

\* Yazışma yapılacak yazar: [halilbarisozel@yahoo.com](mailto:halilbarisozel@yahoo.com)

Makale metni 03.07.2013 tarihinde dergiye ulaşılmış, 28.07.2013 tarihinde basım kararı alınmıştır

“planned establishment of new forests and sustainment of (keeping) them with ones existing in nature, and regenerating them and sustaining their existence in best form” (Saatçioğlu 1969; Ata 1995; Odabaşı et al. 2004).

The existence of wide range of species diversity and stand establishments in Turkey depending on various habitat conditions play direct role in determination of techniques to be used in regeneration and keeping efforts to be made, and also in their success. That's why; it is very important to determine the regional habitat conditions (climatic, edaphic, and physiographic conditions) and stand properties (stand type, closure, density, layeredness, mixture rate, and etc.) in details in forest area where the silvicultural intervention will be performed (Çepel 1966; Daşdemir 1987; Oliver and Larson 1996; Çolak and Odabaşı 2004). In order to provide that information, the habitat researches and stand structure analyses should be done (Saatçioğlu 1969; Smith et al. 1997; Bachofen and Zingg 2001; Wehrli et al. 2005). Even though the information about habitat conditions and stand properties are very important, they are not enough for the success of regeneration and keeping efforts by themselves. Besides the information obtained from performed researches and stand analyses, also the species to be intervened and the silvicultural requirements of those species should be known (Özel 2007).

The black b-pine populations in our country includes some important criteria such as volume productivity, height increase, diameter increase, wood quality, and seed productivity, and they sustain their existence by adopting themselves to their habitat as a result of natural selection which nature has sustained for hundreds of years. The black pine is one of the leading species spreading all over the world. Besides being the specie objected to many researches in different countries, black pine is also a specie which has engaged botanists' attention for many years, and there are some debates about its systematic. According to the recently used and valid classification, black pine is distributed into 5 sub-classes (Alptekin 1986; Yaltrık 1988; Ertekin 2006). Those sub-classes and their habitats are given below.

- a. *Pinus nigra* Arnold. Subsp. *nigra*: Austrian black pine, (Syn: *Pinus nigra* Arnold var. *austriaca* (Hoess.) Badaux.), from Austria to middle Italy, naturally develops in Greece and Yugoslavia.
- b. *Pinus nigra* Arnold. Subsp. *larico* (Poiret) Maire: Corsica black pine, (Syn: *Pinus nigra* Arnold var. *corsicana* Suring), exists in Southern Italy, Corsica and Sicilia.
- c. *Pinus nigra* Arnold. Subsp. *dalmatica* (Vis.) Franco: Dalmatian black pine, spreads over northwestern coasts and islands of Yugoslavia.
- d. *Pinus nigra* Arnold. Subsp. *salzmannii* (Dunal) Franco: Pyrene black pine, (Syn: *Pinus nigra* Arnold var. *cabennensis*), seen in middle and southern Spain and over Pyrene mountains.
- e. *Pinus nigra* Arnold. Subsp. *pallasiana* (Lamb.) Holmboe: Anatolian black pine, (Syn: *Pinus nigra* Arnold var. *caramanica*, *Pinus nigra* Arnold var. *pallasiana* Schneid.), spreads over Balkans, Southern Carpathians, Crimean, Turkey, Cyprus, and Syria.

About 30-35 m height, Anatolian black pine is among first class forest trees. They have thick peels, and their old bodies have deep cracks. They have thicker branches than Scotch pine. The resinous gemmas are cylindrical, their tips become sharp suddenly. 8–15 cm length needle-leaves are dark green and hard. As they head through gemma at sucker tips, they create a gap like a pot, and that property of them differs from Scotch pine (Anşın 1994; Ertekin 2006).

Being in second place after Turkish pine in our needle-leaved tree species, black pine is resistant against both drought and winter colds, and its habitat spreads over 3,328,730 ha in our country. The habitat of black pine are Thrace, Northern, Western, Southern and Central Anatolia. They don't exist in marine climate regions of eastern Black Sea region only. This situation is very important from the aspect of evaluation of habitat requirements of this specie. Black pines create pure forests at 400-1400 m altitudes in Black Sea region, except eastern part. They exist at 1400–1700 m altitudes together with Scotch pines and in smaller surface areas. They create mixed stands in western parts of Black Sea region, especially with abies and oaks. Being leading specie in western Anatolia with its large and pure forests, it dominates in higher altitudes. They spread over valleys through shoulders facing the sea. The specie spreading into the steps at most in Anatolia is black pine. It creates its most valuable stands in Kütahya-Tavşanlı, Dursunbey-Alaçam, Adana-Pos, Kastamonu-Boyabat-Elekdağ, Çorum-Kargı, Tosya and Karabük-Yenice. The most typical property of black pine is to prefer the locations facing against the sea such as south parts in northern and central Anatolia, northern shoulders and narrow valleys in Toros mounts; black pine prefers extreme climate conditions. On the other hand, black pine has wide variation in Anatolia. Despite it grows in hot and dry climates, it is also specie which can resist against winter colds. Black pine is a

half-light tree. This property of them continues to half-shadow tree property under optimum regional conditions. The black pine is very abstinent in terms of soil requirements, and creates taproot. Because of its resistance against drought and frost, rapid growth, valuable wood, and being the specie closest to step, the black pine is the first tree coming to the mind during forestation efforts in our country (Saatçioğlu 1976; Yaltırık 1988; Anşın and Özkan 1993; Ertekin 2006).

In this study, by using the Large Field Cover Method (LFCM), it was aimed to determine the success level of black pine regeneration efforts in Kastamonu-Araç region. Within this context, 5 parts of fields where 1<sup>st</sup> Forest Sub-District Directorate (affiliated with Araç Forest District Directorates) has conducted natural regeneration efforts in different years (2004, 2005, and 2007) have been chosen as research site. In order to achieve the goal of this research, the determinations and evaluations specified below have been made during 2 years in experiment sites from black pine regeneration fields:

- a. The habitat conditions (climatic, edaphic, and physiographic factors) of stands where natural regeneration efforts have been made have been determined,
- b. During 2 years of study (2011-2012), the changes in numbers of youth beeches in unit of area (m<sup>2</sup>) in regeneration fields and the changes in their development (length and tree root neck diameter (the status of tip and the color of leaves) have been investigated,
- c. The effect levels of many factors affecting the success of regeneration effort have been determined via multi-dimensional statistical analyses, and the most important factors affecting the success of regeneration have been stated.

## 2. MATERIAL - METHOD

### 2.1 Material

#### 2.1.1 General Introduction of Research Sites

Located within the borders of Araç district of Kastamonu and administratively affiliated with Araç Forest District Directorate, Araç (Central) Forest Sub-District Directorate is located in the E26-a3, E26-a4, F28-b3 and F28-b4 sections of 1/25000 scaled topographic Kastamonu map. Having a rough terrain in general, the Araç Forest Sub-District Directorate's mean altitude is 1150 m, while the lowest point is Brook Aydın and the highest point is Çandarlı hill (Anon. 2011).

From the forest populations, the research site is located in *northwestern euxin* sub-zone of *euxin* forest zone (Mayer and Aksoy 1998). In Araç planning unit, according to the inventory studies completed in 2011, there are totally 12,143 ha forest field. Of this field; 62.6% is normal, and the rest has the characteristic of ruined forest. According to the forestry being implemented, the forest sub-district directorate has been separated into 3 process units. In harmony with that, the distribution of forests in planning unit in terms of area, tree wealth, and increase is shown in Table 1 (Anon. 2011).

Table 1. The status of forests of Araç Forest Sub-District Directorate in terms of area and tree wealth by process units

Process Units	Area (ha)	Total Wealth (m <sup>3</sup> )
AA-Process unit of bad habitat fields	2,465.6	458,976
AB-Black pine process unit	8,473.4	2,796,165
AC-Rehabilitation sites process unit	1,204.6	1,345,897
<b>General Total</b>	<b>12,143.6</b>	<b>4,601,038</b>

Evaluating the forests in Araç region in terms of stand organization, most of forests of sub-district directorate (56.6%) are in mixed-stand organization. In mixed forests in planning unit, the bipartite and tripartite mixed stand types such as black pine+Scotch pine, black pine+Scotch pine+abies, black pine+oak, black pine+beech,

black pine+beech+abies, and abies+black pine dominate the region. The pure forests of region consist of pure beech stands (Anon. 2011).

According to the micro-climate types classification, Araç region is under the effect of Western Black Sea sub-climate type (IIc) (Saatçioğlu 1969; Özyuvacı 1999). There isn't any meteorology station in research site. For having general information about climate of a region having no meteorology station but having known altitude, Çepel (1995) and Özyuvacı (1999) suggest the interpolation of precipitation and temperature values of a meteorology station of which the altitude is known via using Schreiber and Lapse-Rate formulas. That's why, for drawing the climate diagram of the site according to the Walter method, the long-term (73 years) mean values of Kastamonu Meteorology Station (which is the closest one) have been utilized. For this purpose, the precipitation and temperature values obtained from Kastamonu Meteorology Station have been interpolated for Araç region via Schreiber and Lapse-Rate formulas. The climate diagram of Araç region prepared according to Walter method is given in Figure 1.

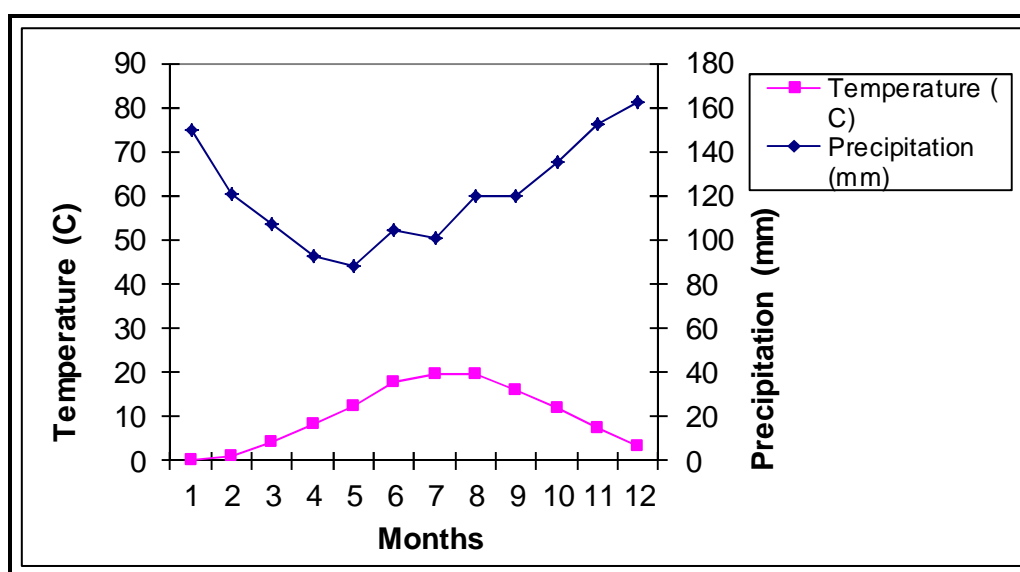


Figure 1. Araç region's climate diagram prepared with Walter Method

### 2.1.2 The Implementations in Experiment Sites

According to the actual forestry plan, 54b, 63c and 76a parts of Araç are within III. bonitet class, and the actual stand type is showed to be Çkcd<sub>2</sub> (Anon. 2011). The parts located in AB-Black Pine process unit are northward and northeastward in general, and their altitudes are 935m, 943m and 910m while the land grade varies between 20% and 35%. The natural regeneration efforts have been made in those segments in 2003, 2005 and 2007 over 10ha, 13,5ha and 8,7ha areas via LFCM method, respectively. For this purpose, seeding-cutting has been performed in Septembers of related years (Figure 2). In that operation, finally 675,356 m<sup>3</sup> revenue etas have been obtained from black pines in all segments. After seeding-cutting, a land preparation consisting of living cover removal and soil processing has been performed on field. During living cover removal process, the pasture brake and blackberry existing densely in field have been removed by cutting in whole surface, and the obtained cutting residuals have been massed in 1-m diameter field. In all segments, because young black pines got their independencies, the removal cutting has been done in November 2010, and totally 788,649 m<sup>3</sup> final revenue etas have been obtained (Anon. 2010).



Figure 2. A general view from research site after seeding-cutting in 2003

## 2.2 METHOD

### 2.2.1 Conditions of Experiment Sites

In this study, where various measurement and determinations have been performed about the young black pines, the research sites have been derived in various sizes from total 5 natural regeneration segments of Araç Forest Sub-District Directorate in 2011 within the context of implemented model forestry plans.

The determination of sampling size plays an important role on reliability of the results of a scientific research. In our country, scientists working on similar objects have taken various sampling sizes as bases for determining the stand organizations and youth biology. For example; Pamay (1962, 1967) has worked on 4x16 m, 10x50 m and 20x100 m of experiment site sized depending on the situation to be determined in stand. Saatçioğlu (1971), in his study on natural regeneration of beech in Forest Belgrad, has worked on experiment site sizes varying between 2116 m<sup>2</sup> and 3625 m<sup>2</sup>. Odabaşı (1976), in his research on coppice forest and copse forests, has taken various sizes varying between 10x20 m and 20x50 m. Ata (1975), Aksoy (1978), Bozkuş (1987) and Özalp (1989), have generally worked on 10x50 m of experiment site sizes. Suner (1978), in his pure oriental beech study in Düzce, Cide and Akkuş regions, has worked on 90x90 m experiment area size. In this study conducted in Araç Forest Sub-District Directorate, considering the duration and object of study, work resources, and land conditions, the size of experiment sites has been determined as 25x40 m (1000 m<sup>2</sup>).

The shape of experiment sites is very important from the aspect of easy and appropriate implementation of borders to land. Taking experiment sites in circle form is an appropriate method because of minimization of the number of trees located on borders and leading to failures. But because of difficulty of implementation of 0.1 h and smaller experiment areas to land due to inclination, it is not used in order to avoid form increasing the suspected trees on border line. In those situations, it is recommended to use square- or rectangle-formed experiment sites (Kalıpsız 1993; Atıcı 1998; Carus 1998). In this study, considering the points such as detail measurements and countings in youth period, we have decided to take rectangular experiment sites.

The determination of the number of samples is very important during planning the research. Excessive amount of samples leads the waste of time and resources. On the other hand, the deficient amount of samples will lead people to estimate the population parameters within a very large range. That's why; the sampling size should be the optimum for representation of the population in best way (Kalıpsız 1976, 1994; Ercan 1997). In our country, various sampling sized have been utilized in studies about comparing the forest populations, determining the growth relationships and adaptation capabilities of various species and origins. For example; Saatçiođlu (1970), in his study on natural regeneration of beech, has established a 7 experiment sites (total area of 2.5 ha) within a beech area with total surface area of 7.6 ha. Within general habitat of Kazdađı abies over 512 ha, Ata (1975) has taken total of 30 experiment sites. And Bozkuş (1987), in his study about natural spread and silvicultural properties of Toros abies, have taken totally 48 experiment sites among the specie's natural habitat which he determined as 350,000 h. Daşdemir (1987), in his study where he has investigated the relationship between habitat factors and productivity of oriental beech, has used the data obtained from 66 experiment sites. Karadađ (1999), in his study on black pine, has carried out his investigation on 14 experiment sites. alıřkan et al. (2004), in their study on regeneration of oak, have worked on 3 groups containing different amounts of oak seed trees. In this study, where various measurements and determination have been done, the surface areas of regeneration experiment sites have been taken as main criterion during determining the number of experiment sites in terms of segments. Within the scope of mentioned points, the numbers of experiment sites are given in Table 2.

Table 2.Introduction of experiment sites

Sub-district directorate	Segment	Experiment Site Nr.	Altitude (m)	Exposure	Slope (%)	Shoulder Status
Araç	54b	1	810	North	25	Top
		2	835	North	32	Middle
		3	846	Northwest	20	Bottom
		4	850	North	18	Bottom
		5	852	Northwest	23	Middle
		6	855	Northwest	27	Top
		7	861	North	20	Middle
		8	874	North	22	Bottom
		9	892	North	26	Middle
		10	896	North	17	Middle
	63c	1	910	Northeast	34	Bottom
		2	913	Northeast	30	Middle
		3	918	Northeast	33	Top
		4	924	North	35	Bottom
		5	930	North	30	Middle
		6	932	Northeast	32	Top
		7	944	Northeast	36	Top
		8	958	Northeast	31	Middle
		9	963	Northeast	32	Bottom
		10	968	Northeast	30	Bottom
	76a	1	910	North	28	Bottom
		2	912	North	24	Middle
		3	916	Northwest	26	Top
		4	910	North	25	Top
		5	918	Northeast	21	Middle
		6	915	Northeast	25	Bottom
		7	914	North	30	Middle
		8	910	North	27	Bottom
		9	914	North	26	Top
		10	910	Northeast	22	Middle

2.2.2

### Determination of Habitat Conditions in Experiment Sites

Forests are living creatures, and have a very special ecosystem occurring as a result of under many factors. This life cooperation which is named "Forest Ecosystem" can show significant variation among regions and even in same region depending on changes in factor or factors forming the forests (Çepel 1966, 1995). That's why; in order to be successful in silvicultural efforts (regeneration, keeping, and forestation) for ensuring the sustainability of the forests, it is very important to know the habitat conditions. For this purpose, we have performed some measurement and determinations on experiment sites about climatic, edaphic and physiographic properties being effective on development of black pine regeneration habitat condition. Those properties have been evaluated as a separated factor in analyses.

#### 2.2.2.1 Determination of Climatic Factors

The climatic factors such as mean annual precipitation, mean annual temperature, and light intensity of experiment sites from natural regeneration areas have been determined. As there was no meteorology station in

research sites, the mean annual precipitation and mean annual temperature values in research sites have been determined via interpolation from mean annual precipitation and mean annual temperature values measured in Kastamonu meteorology station. For interpolating the mean annual precipitation and mean annual temperature values to experiment sites, the Schreiber and Lapse-rate formulas have been utilized.

Within the scope of this study, in order to determine how much of full light in regeneration area penetrates into stand and to include it into analyses, the light intensity of research sites have been calculated. For this purpose, in noon hours when the sunlight reaches earth vertically, the light measurements have been carried out with 2 lux-meters with 240.000 lux capacity synchronously in stand and open area.

### 2.2.2.2 Determination of Edaphic Factors

In order to investigate the soil properties of regeneration fields, soil profiles have been opened. The numbers and locations of soil profiles vary depending on soil investigation aim and the sampling methods. When one wants to determine the soil properties of a segment, part or experiment site, according to randomized sampling method, it is enough to open profile in points where the physiographic conditions obviously change (exposure, altitude, slope, relief, and etc.) in parts or segments, and in middle point or near it in experiment sites (Irmak 1972; Çepel 1966; Kantarcı 2000; Scheffer and Schachtschabel 2001). The determination of the number of soil profiles has been performed differently by various researchers. For example, Çepel et al. (1977), in their study about Scotch pine in important habitats of Turkey, have opened soil profiled in all of 187 experiment sites with sizes varying from 150 m<sup>2</sup> and 870 m<sup>2</sup> and obtained from 14 forest district directorates. Eruz (1980), in his study in Forest Belgrad, has opened 46 soil profiles over 5441.7 h of research site. Akgül and Aksoy (1976), in their research in Bolu-Şerif Yüksel Research Forest, have carried out their research on totally 440 soil profiles opened in 1544 h of research area. Pamay (1962), in his research on natural regeneration of Scotch pine, considering the differences in exposure in altitude, has opened 12 soil profiles in total. Karadağ (1999), in his study on natural regeneration conditions of black pine, has opened 8 soil profiles on process segments with size of 5600 m<sup>2</sup> in total. As a result of performed assessments, it has been appropriate to open total of 9 soil profiles (3 in each segment) in order to determine the soil properties of natural regeneration area.

While opening the soil profiles, the rules stated by Çepel (1996) have been taken into account. In those profiles, the absolute and physiologic soil depths have been measured, and determinations have been made about root distribution and structure type. But, about the research topic, we focused on properties of top soil being effective on the number and development of young black pines, and the values about this property have been statistically analyzed.

For smooth penetration of roots and rain waters into the soil, improved aspiration in soil, and high nutrient exchange, the best structure type is clastic structure. Because, the plants can distribute their roots through a wider range in soils having clastic structure, and can profit the nutrient medium better. This situation significantly smooths the profiting of small rootlets from water and nutrients in early years of natural and artificial regeneration efforts (Çepel 1995). In this point, it has been found that the best developments of Scotch pine, black pine, Turkish pine, oak, Uludağ abies and Toros abies have occurred in clastic-structured soils having better aspiration and water-retention capabilities (Pamay 1962; Özdemir 1977; Çepel et al. 1977; Kantarcı 1978; Bozkuş 1987; Karadağ 1999). Under the light of those information, it has been determined that the structure type is important for development of young black pines, and the data about this variable has been included in analyses, as mentioned in Table 3.

Table 3 The numerical values of structure type in statistical analyses

Structure type	Numeric value
Granular structure	1
Clastic structure	2

There is no close relationship between the numbers of rootlets (< 2mm) in topsoil and soil productivity. The increase in number of rootlet creates positive effect on development of youth. That's why; the number of rootlets having diameter less than 2mm has been determined as mentioned in Table 4, and has been added into statistical analyses as a variable.

Table 4 The numerical value of rootlet status in statistical analyses

Definition of rootlet status	The number of thin rootlet per 1 dm <sup>2</sup> (Ø < 2 mm)	Numeric value
None	0	1
Very weak	1 – 2	2
Weak	2 – 5	3
Middle	5 – 10	4
Strong	10 – 20	5
Very strong	20 – 50	6
Root network	50 <	7

The soil samples taken from soil profiles according to the horizons have been analyzed in laboratories for determination of physical and chemical properties according to certain principles (Çepel 1996; Kacar 1996; Scheffer and Schachtschabel 2001), and soil properties such as soil reaction (pH), soil texture, organic matter, and macro plant nutrient elements (N, P, K) have been determined.

Soil texture is an important soil factor having important effect on nourishment of forest trees. From this aspect, sandy soils are poor in terms of water and nutrient matters. That's why; the tree species having high organic matter requirements cannot show good development in sandy soils. On the other hand, the clayed soils retain more water and this leads to oxygen deficiency in tree roots. Also, despite the clayed soils retain high amount of water, the plants cannot profit from that water well. That's why; the most appropriate soil types for plant development are sandy loam, loam, and sandy clayed loam where the water and air economy is optimum (Brady 1990; Çepel 1995; Scheffer and Schachtschabel 2001). Also, the soil type is an important factor affecting the regeneration success (Çepel 1982). That's why; the determinations have been made in opened soil profiles about texture of top soil, which is important for the number and development of youth, the numerical values have been obtained and those values have been used in statistical analyses.

Table 5 Numeric values of soil texture (type) in statistical analyses

Soil type (Texture)	Numeric value
Clay	1
Clayed loam	2
Sandy clay	3
Sandy clayed loam	4
Sandy loam	5

Soil reaction (pH) is an important soil property in terms of plant's nutrient intake. Hence, this situation has been proved in various researches of many researchers (Çepel et al. 1977; Kantarcı 1978; Eruz 1980; Kerr 1995). That's why; it is thought that there may be a relationship between the number of youth and pH value of top soil. In parallel with that, the pH value of top soil determined under laboratory conditions are given in Table 6, and those numeric values have been used in statistical analyses.

Table 6 Numeric value of soil reaction (pH) in statistical analyses

pH	Soil reaction	Numeric value
< 3.5	Extremely acidic	1
3.5 – 4.5	Severely acidic	2
4.5 – 5.5	Mildly acidic	3
5.5 – 6.5	Weakly acidic	4
6.5 – 7.2	Neutral	5
7.2 – 8.5	Alkaline	6
> 8.5	Severely alkaline	7

Organic matters in soil play important role in disintegration of soil minerals and creation of clastic soil texture, so affect the soil development. Also, because they include the nutrients required for plants, they are important for mineral circulation. Besides them, they create the nutrient medium for soil micro-organisms, so it is an important factor affecting the soil biology (Çepel 1995; Kantarcı 2000).

About the amount of organic matter being effective on physical and chemical structure of soil, Çepel et al. (1977), in their research on Scotch forests, have found a relationship between organic matter in forests in Eastern Anatolia and increase. In another research conducted by Eruz (1980), it has been determined that the organic matter content in beech stands in Forest Belgrad varies significantly depending on soil type. In parallel with those explanations, it has been thought in this study about evaluation of natural black pine regeneration efforts that organic matter content in soil may be a factor on youth success, and that factor has been added into statistical analyses as stated in Table 7.

Table 7 The numeric values of organic matter content of soil in statistical analyses

Organic matter amount	Numeric value
% 1 – 2 (Low)	1
% 2 – 5 (Medium)	2
% 5 – 10 (High)	3
% 10 – 15 (Very high)	4

The macro nutrient elements of azote, phosphor and potassium are the most important elements required for normal development of the plants (Irmak 1972; Brady 1990; Çepel 1995; Smith et al. 1997; Türüdü 1997; Scheffer and Schachtschabel 2001).

Many researches investigating the relationship between azote, potassium and phosphor macro nutrient elements and plant development have been made, and very interesting results have been obtained in those researches. For example; Çepel et al. (1977), in their study on pure Scotch pine forests in important habitats, have significant relationships between reserve values of azote, phosphor and potassium elements and top heights of stands. Eruz (1980), in his research on beech and oak stands, has found that the diameters and heights of beech and oak trees increase in direct proportion to increase in amounts of especially azote and potassium in top soil. Uğurlu and Çevik (1990), in their study on coppice oak forests, have revealed that there is a linear relationship between potassium, magnesium and calcium elements in soil and sucker lengths. According those explanations, with thought of that the azote, phosphor and potassium content in top soil segment (Ah) may be effective on regeneration success in natural black pine regeneration efforts, including them into statistical analyses as stated in Table 8 has been considered to be suitable.

Table 8 Numeric values of azote, phosphor and potassium elements in statistical analyses

Nutrient matters	Limit values	Levels	Numeric value
Azote (%)	< 0.70	Low	1
	0.70 – 1.60	Medium	2
	> 1.60	High	3
Phosphor (ppm)	< 65	Low	1
	65 – 130	Medium	2
	> 130	High	3
Potassium (ppm)	< 80	Low	1
	80 – 160	Medium	2
	> 160	High	3

An increase in level of soil saltiness which has direct and indirect effects on creation of various physical properties of soils and plant nourishment affects the physical properties (structure, texture, and etc.) negatively, and the plants cannot obtain the nutrients required for their development from soil adequately as a result of that (Kacar 1996). Hence, DüNDAR (1973), in his study on relationship between dryness seen in black pine and Scotch pine stands and the concentration levels of nutrient matter in soil, has revealed that water-soluble total salt content was high in soils of experiment sites where black pine and Scotch pine stands exist. On the other hand, Eruz (1980), in his study in beech and oak stands' soils, has determined that there are high level of salt content, but in accumulation horizon where the saltiness is slightly higher than other soil horizons, the cation exchange capacity decreases and consequently the density of plant root density decreases in that horizon. Considering that saltiness level of top soil layer where the root development of youth occur may affect the number and development of youth, the level of saltiness in taken soil samples has been determined and the values about saltiness of top soil have been directly used in statistical analyses.

The main resource of macro and micro nutrient matters in soil is the litter. The litter generally consists of leaf, thin branch, peel, cone scale and organism residuals. The litter consists of 3 main layers of leaf, molds, and humus. That's why; for introducing the latter well, it is necessary to determine the changes in thickness of those 3 layers (Çepel 1995). In this study, in order to make detail measurements in youth and to count youth, the thicknesses of latter layers (leaf, mold, humus) have been measured in total of 20 sample sites with 5x5 m size (25 m<sup>2</sup>) established in research site with dimensions of 25x40 m.

Besides establishing the most important nutrient resource of the soil, latter has important effects on temperature, moisture, aspiration, permeability, and acidity (reaction) of the soil (Saatçioğlu 1969; İrmak 1972, 1974; Çepel 1995, 1996).

It is possible to define the living cover (plant cover of soil) as a living layer consisting of annual and perennial plants existing over forest soil. From this aspect, the living cover, with latter, is a factor characterizing the status of outer soil (Çepel, 1995). Besides many physical and chemical properties of soil, the living cover layer has also direct and indirect effects on plant development. That's why; the interventions in forests during regeneration efforts to be made should be made by considering the density of living cover layer. In parallel with that information, the living cover density has been determined in sample areas with size of 25 m<sup>2</sup>. The living cover density has been added into statistical analyses in accordance with determined numeric values.

### 2.2.2.3 Determination of Physiographic Factors

One of the important factors affecting the creation of habitat conditions is physiographic factors. Physiographic factors include various characteristics about geographic and geomorphologic properties. The presentation of physiographic characteristics of any region means specific local conditions belonging to that region. And the presentation of special location properties is carried out via altitude, exposure, land slope level, and land surface form (shoulder status) variables. So, the presentation of physiographic properties of a forest ecosystem can be possible only with variables used in presentation of specific location (Çepel 1966, 1995; Smith et al. 1997). In order to define the physiographic factors of stands where the experiment sites have been taken from, the

measurements and determinations have been made for specific location conditions such as altitude, exposure, land slope and shoulder status.

The altitude (height from sea level) is an important factor affecting the climate, soil properties and vegetation structure. The low temperature and high moisture conditions in higher altitudes lead significant changes in soil properties. In parallel with those explanations, with the thought that the altitude may be a factor affecting the number and development of young black pines, the altitudes of experiment sites have been measured via altimeter and those values have been added into statistical analyses as variable.

The exposure of a land affects especially the temperature and precipitation climate of that place. In our country, the shadowed exposures (north, northeast, northwest, and east) are colder, sunny exposures (southeast, south, southwest, and west) are warmer. The reason is that the hours and strength of sunshine in sunny exposures are higher in north hemisphere. The shoulders facing the winds bringing the moisture get more precipitation. As their evapotranspiration is less because of coolness, the soil in shadowed exposures is moister than those in sunny exposures in same region. Because of excessive warming in days on one hand and excessive water loss in nights on the other hand, the frost danger in sunny exposures is more than that in shadowed exposures. The existence of snow cover in shadowed exposures more than in sunny exposures plays important role in this point. From this aspect, this characteristic must be considered in natural regeneration and forestation efforts (Çepel 1995). But Kapucu (1978) has reported that site quality is higher in shadowed exposures of spruce tree + Scotch pine + abies + beech stands than in sunny exposures. In a study of Daşdemir (1987) conducted in order to determine the factors affecting the productivity of *fagus orientalis* forests, it has been reported that there is no significant relationship between exposure and site quality index, but the shadowed exposures have more appropriate conditions for oriental beech stands' development than sunny exposures because of negative relationship between the variables. Bozkuş (1987), in his study on Toros abies, has reported that this specie creates its best stands in shadowed exposures. Çalışkan (1991) and Demirci (1991), in their researches on Scotch pine + abies + beech and spruce + beech mixed stands, have reported that the stand development is better in shadowed exposures than sunny exposures. That's why; the exposure of research sites has been determined via compass, and added into analyses as a variable after being given a numeric value.

The land slope has an important factor affecting the local climate and soil properties of any place and the styles of profiting the land. As land slope increases, the surficial flow and consequently the erosion severity increase and soil depth decreases. So, in sloped locations, shallow and droughty soil conditions having rich skeleton structure occurs. But in lowly sloped places, there are deep, moist and appropriate soil textures with low skeleton content. Also the land slope is an important factor affecting the nutrient economy of the soil. But biologic activity increased in lowly sloped lands with appropriate moisture and temperature conditions of soils, consequently the soil obtains high nutrient matter capacity as a result of better disintegration of organic matter (latter) (Çepel 1995; Kantarcı 2000; Scheffer and Schachtschabel 2001). According to the results obtained from various researches, the land slope is an important physiographic factor affecting the habitat productivity. That's why; with the thought that land slope can be factor affecting the natural regeneration efforts on black pine, this variable has been measured as percentage (%) via an abney level. Then the results have been added into statistical analyses.

Different land forms have various ecological properties. That's why; the land form (shoulder status) is an important physiographic factor affecting the local climate characteristics and soil conditions. Indeed, annual and daily temperature changes in parts of shoulder at and near the ridge are higher than those in flat lands at same altitude. Also, the damages of leaching and wind are more in ridge lands. The soil depth is higher in ridge and top shoulder lands are lower than that in middle ridge and bottom ridge lands (Çepel 1966; Brady 1990; Çepel 1995; Smith et al. 1997). In various researches on this topic, it has been determined that the ridge lands are the most unproductive sites for stand development, and the increase increases from upper parts of shoulders to lower parts, and then the most productive sites are the flat areas (Çepel et al. 1977; Kapucu 1978; Daşdemir 1987; Bozkuş 1987; Çalışkan 1991; Demirci 1991; Boydak et al. 2006). For this purpose, the land forms (shoulder status) of land where the experiment sites are located have been grouped into 3 groups, and those groups have been added into statistical analyses after being given a numeric value as stated in Table 9.

Table 9. The numeric values of land forms of experiment sites in statistical analyses

Land Form (Shoulder Status)	Numeric Value
Upper shoulder	1
Middle shoulder	2
Bottom shoulder	3

## 2.2.4 Counting, Measurement and Determinations about Juvenility

### 2.2.4.1 Juvenility Countings

The most important criterion used in determination of success of natural regeneration effort is the number of youth in square meter (Baker 1934; Smith 1962; Pamay 1962; Saatçioğlu 1979; Atay 1982; Smith et al. 1997; Nyland 2002; Odabaşı et al. 2004). Hence, in many researches conducted in order to determine the success of natural regeneration efforts performed on various species, the number of youth in square meter (pcs/m<sup>2</sup>) has been considered to be a success criterion (Saatçioğlu 1970; Atay 1971; Sevimsoy 1984; Eyüboğlu et al. 1995; Umut et al. 1996; Karadağ 1999; Agestam et al. 2003; Pariona et al. 2003; Çalışkan et al. 2004). In practice, the number of youth in m<sup>2</sup> is considered while evaluating the success of natural regeneration efforts (Anon. 2006; Genç 2006). In this study, the number of youth in m<sup>2</sup> is considered to be a success criterion. For this purpose, the number of young black pines in square meter has been calculated.

Used in determination of the number of youth in square meter considered as an indicator of the success of natural regeneration efforts, the sampling method has great importance from the aspect of accuracy of the results. In practice, the method called "40 steps method" is used for determining the success of natural regeneration efforts. In this method, a rectangle (2 m<sup>2</sup>) or a circle (160 cm diameter) is placed after each 40 steps in parallel with leveling lines, and then the youth counting is performed. In sapling counting sheets prepared during those countings, the sampling sites where there is no young tree is given a value of 0, while the number of young trees is written besides the sampling sites where there are young trees. After those processes, while calculating the youth success, the total number of points where there are young trees is divided to total number of calculation sites, and the result is multiplied with 100 in order to determine the number of youth in percentage. In youth success calculations, the sites having at least 70% youth regeneration success are considered to be successful, while complementation is made in sites below 70% (Anon. 2006). But Kalıpsız (1988) has suggested to repeat the countings of cones, seeds and saplings in 1-4 m<sup>2</sup> experiment sites for 30-100 times. Saatçioğlu (1970), in his study in natural regeneration of beech, has carried out youth countings on experiment sites with varying areas from 1696 m<sup>2</sup> to 3625 m<sup>2</sup>. Suner (1978), in his study on natural regeneration of beech, has carried out those countings on parcels with dimensions of 30x30m in 90x90m blocks. Umut et al. (1996), in their natural regeneration study in Turkish pine, have conducted countings on 25x10 m sampling areas and repeated for 48 times. Kaymakçı et al. (2002), in their study in regeneration of high-zone black pine forests, have carried out the countings on 10x25 m experiment sites and repeated for 9 times. In a study conducted between 2004 and 2006, the youth countings have been performed on 5x5m sized sites established in grid form on 25x40 m sized area. So, through the sampling method applied in research, the youth countings have been conducted on total of 20 experiment sites (500 m<sup>2</sup>). Using the data obtained in countings in sampling sites on experiment areas, the number of youth per m<sup>2</sup> has been calculated via formulas below.

$$GS = \frac{\sum GS_i}{\sum \ddot{O}B}$$

where;

GS : the number of youth per square meter (pcs/m<sup>2</sup>),

$\sum GS_i$  : Total number of youth in sampling sites (pcs/500 m<sup>2</sup>),

$\sum \ddot{O}B$  : Total of sampling area (500 m<sup>2</sup>).

#### 2.2.4.2 Measurement of Juvenility Height

The height of youth is one of the most important criteria used for determination of growth of youth since first years (Saatçiođlu 1979; Atay 1982, 1987; Ata 1995; Oliver and Larson 1996; Smith et al. 1997; Nyland 2002; Odabaşı et al. 2004). That's why; in many studies conducted on natural regeneration of various species, the height measurements have been carried out since first years in order to determine the changes (Sevimsoy 1984; Tosun and Gülcan 1985; Eyübođlu et al. 1995; Umut et al. 1996; Karadađ 1996; Dünder et al. 2002; Kaymakçı et al. 2002; Çalıřkan et al. 2004). For this purpose, the height values of young black pines during 2 years have been determined for each of experiment sites.



Figure 4. Measurement of youth height

As a result of height measurements carried out in black pine youths in sample sites during the study, the average of obtained results has been calculated via the formula below, and the mean annual growth values of black pine youths have been calculated. The mean height values of young black pines determined in each experiment site have been included in statistical analyses as individual variables.

$$\bar{h}_g = \frac{\sum h_{gi}}{n}$$

where;

- $\bar{h}_g$  : mean height of young black pines in experiment site (cm),
- $\sum h_{gi}$  : Total height of young black pines in experiment site (cm),
- $n$  : Total number of young black pines in experiment site (pcs).

### 2.2.4.3 Measurement of Root Collar Diameter of Juvenilities

Another variable used for determining the growth in youth in terms of years is the root collar diameter. The root collar diameter is also an important criterion for determination whether newly germinated seedlings could develop their root systems. Hence, it has been found as a result of researches on some species that there is an important relationship between root neck diameter and the opportunities of seedlings for profiting the water and nutrient elements in soil (Dündar et al. 2002). That's why; the determination of root neck diameters of young natural black pines has been considered to be important from the aspect of revealing the opportunities of seedlings for profiting the actual soil conditions.

$$\overline{KBÇ} = \frac{\sum KBÇ_i}{n}$$

where;

$\overline{KBÇ}$  : The mean root collar diameter of young black pines in experiment site (mm),

$\sum KBÇ_i$  : Total mean root collar diameter of young black pines in experiment site (mm),

$n$  : Total number of young black pines in experiment site (pcs).

### 2.2.5 Statistical Analyses Used in Research

For statistical analysis of data obtained as a result of research, SPSS (Statistical Package for Social Science) 9.0 package software has been utilized. In order to determine whether data used in statistical analyses show normal distribution, the Kolmogorof Simirnov test has been utilized (Kalıpsız 1994; Batu 1995; Ercan 1997; Özdamar 2004).

In natural regeneration implementations, there are individual and cooperative effects of many factors on regeneration success (the number of youth per square meter), development of youth (height increase and root neck diameter development) and some morphologic characteristics (the status of tip and leaf color) (Pamay 1962; Atay 1971; Saatçioğlu 1979; Çepel 1982). Especially the number of youth per square meter which is used for determining the success of regeneration efforts is significantly affected by environmental factors, genetic factors and implemented silvicultural techniques. So, it is recommended to utilize multi-dimensional statistical analyses for determining the factors affecting the quantitative character such as youth number (Oliver and Larson 1996; Madsen and Larsen 1997; Tegemark 1998; Beck 2000; Elliott and Knoepp, 2005).

The multi-dimensional statistical analyses are techniques where many different variables being in relationship with each other are handled and evaluated (Daşdemir 1987, 1995). In this study, the multi-dimensional factor analysis and multiple regression analysis from statistical analyses have been utilized for assessment of factors affecting the success of youth.

Firstly, the correlation analysis has been utilized in order to determine the level and direction of mutual relationships between variables. As a result of analysis, it has been evaluated if the mutual linear correlation coefficients between variables are significant at confidence levels of, 0.05 and 0.01. The factor analysis has been utilized according to correlation coefficients between variables. After preparing the data table related with factor analysis, among widely used factor creation methods, Principal Components Analysis has been taken as base for determining the factors explaining the variance at best way. So, the variables having high correlation coefficients among each other have formed factors by gathering. For determining the number of factor to represent the relationship between variables at highest level, "Kaiser" and "Scree Test" criteria are used. In this study, the Kaiser method based on creation of factors having eigenvalue statistics higher than 1 has been utilized.

In order to name factors and smooth the interpretation, the factor matrix which has been obtained via Principal Component Analysis but not transformed must be rotated. For this purpose, by choosing the orthogonal rotation

based on zero correlation between factors, *Varimax* technique has been implemented and the transformed factor matrix has been obtained.

The naming and interpretation of factors can be performed according to common feature of one or more variable having high factor load. Sometimes, the variable having highest factor load can be taken as factor standard (Kalıpsız 1994). Considering the aim of the study, common factors are named in 3 ways. Those are symbolic names, descriptive names, and causal names (Daşdemir 1987). In this study, the naming and interpretation of factors have been carried out generally based on variable with highest factor load. But in some situations, the common reasons lying behind the variables seeming to be in relationship with factor have been taken into account.

In this research, it has been thought to create an opinion about the variables (climatic, edaphic, and physiographic variables) determined during 3 years on the number of young trees. For this purpose, in order to determine the effects of all of the variables on the number of youth, the number of young black pines per square meter determined in 2006 has been taken as base in multiple regression analysis. As the independent variable in multiple regression analysis, the most important factor found as a result of factor analysis (eigenvalue higher than 1) was used. *Enter* method has been chosen for implementation of multiple regression analysis.

### **3. FINDINGS**

#### **3.1 FINDINGS ABOUT THE HABITAT CONDITIONS**

##### **3.1.1 Findings About the Climatic Factors**

The mean annual precipitation and mean annual temperature values of experiment sites have been obtained via interpolation. During those interpolations in precipitation and temperature values, the annual increases and decreases in mean precipitation and temperature values in meteorology stations in same years with research have been taken into account (Table 10).

Table 10. Mean annual precipitation and mean annual temperature values of experiment sites

Sub-District Directorate	Parcel Nr	Experiment Site Nr	Year 2012	
			Mean Precipitation (mm)	Mean Temperature (°C)
Araç	54b	1	853.6	13.6
		2	862.5	14.2
		3	843.2	13.8
		4	875.9	13.5
		5	883.2	13.7
		6	887.5	13.2
		7	881.4	14.5
		8	886.3	14.8
		9	880.5	13.6
		10	883.6	13.4
	63c	1	945.2	12.4
		2	943.5	12.2
		3	937.8	12.0
		4	948.6	11.8
		5	952.5	12.3
		6	965.7	12.5
		7	973.8	12.8
		8	971.5	12.0
		9	955.3	11.7
		10	942.6	11.5
	76a	1	894.5	14.2
		2	892.6	14.5
		3	891.4	14.6
		4	890.2	14.3
		5	897.6	14.5
		6	898.3	14.2
		7	887.6	14.4
		8	890.1	14.6
		9	892.4	14.3
		10	898.7	13.6

Evaluating the mean annual precipitation and mean annual temperature values obtained via interpolation and showed in Table 10, it has been found that the mean annual precipitation value of year 2012 in Araç region where the research has been conducted has varied between 880.5 and 973.8mm, while the mean temperature value has varied between 11.5 and 14.8°C.

Another factor taken into account within the climate conditions is the light intensity. For this purpose, in order to determine the light intensity, light measurements have been carried out simultaneously in an out of stand under open air (cloudless) conditions. As a result of conducted light measurements, the light intensity values obtained as a result of proportioning the light measurements in and out of the stand are stated in Table 11.

Table 11. Light intensities in experiment sites

Sub-District Directorate	Parcel Nr	Experiment Site Nr	Light Intensity (%)
Araç	54b	1	56
		2	58
		3	52
		4	63
		5	65
		6	62
		7	68
		8	67
		9	59
		10	61
	63c	1	68
		2	72
		3	75
		4	74
		5	73
		6	76
		7	75
		8	73
		9	71
		10	70
	76a	1	63
		2	62
		3	64
		4	65
		5	68
		6	63
		7	65
		8	66
		9	69
		10	71

### 3.1.2 Findings About The Edaphic Factors

The findings determined as a result of investigations conducted in 9 soil profiles opened in 3 parcels of regeneration implementation site are given in Table 12.

Table 12. The results of measurement and determinations in soil profiles.

Sub-District Directorate	Parcel Nr	Profile Nr	Physiologic Depth (cm)	Absolute Depth (cm)	Rootlet Status	Structure Type
Araç	54b	1	88	100	Medium	Granular
		2	86	75	Medium	Granular
		3	82	88	Medium	Granular
	63c	1	76	64	Medium	Clastic
		2	79	73	Frequent	Clastic
		3	75	53	Weak	Granular
	76a	1	81	38	Weak	Granular
		2	87	50	Frequent	Clastic
		3	84	87	Weak	Granular

The second phase of investigations of edaphic conditions consists of various physical and chemical analyses on soil samples taken from soil profiles in terms of horizons under laboratory conditions. In those analyses, important soil characteristics such as pH, organic matter content, total azote, phosphor, potassium and saltiness have been investigated. The minimum and maximum values of chemical analysis results determined in terms of trabeculas are given in Table 13.

Table 13. Maximum and minimum values of chemical analysis results of soil samples

Sub-District Directorate	Trabecula Nr	pH		Organic Matter (%)		Azote (N) (%)		Phosphor (P) (ppm)		Potassium (K) (ppm)		Saltiness (dS/m)	
		Min.	Max.	Min.	Max.	Min.	Max.	Min.	Max.	Min.	Max.	Min.	Max.
Araç	54b	6.20	6.80	5.53	7.28	0.45	1.25	12.0	36.0	79.0	228.0	0.17	0.84
	63c	6.15	7.26	8.56	9.18	0.56	1.35	7.0	27.0	65.0	210.0	0.23	0.65
	76a	6.35	7.11	9.23	10.21	0.46	0.72	8.0	32.0	58.0	165.0	0.35	0.72

### 3.2 FINDINGS ABOUT JUVENILITY

#### 3.2.1 Findings About the Number of Juvenilities

The most important criterion in determining the success of natural regeneration is the number of young trees per square meter. That's why; the number of young trees per square meter in research site is given in Figure 5.

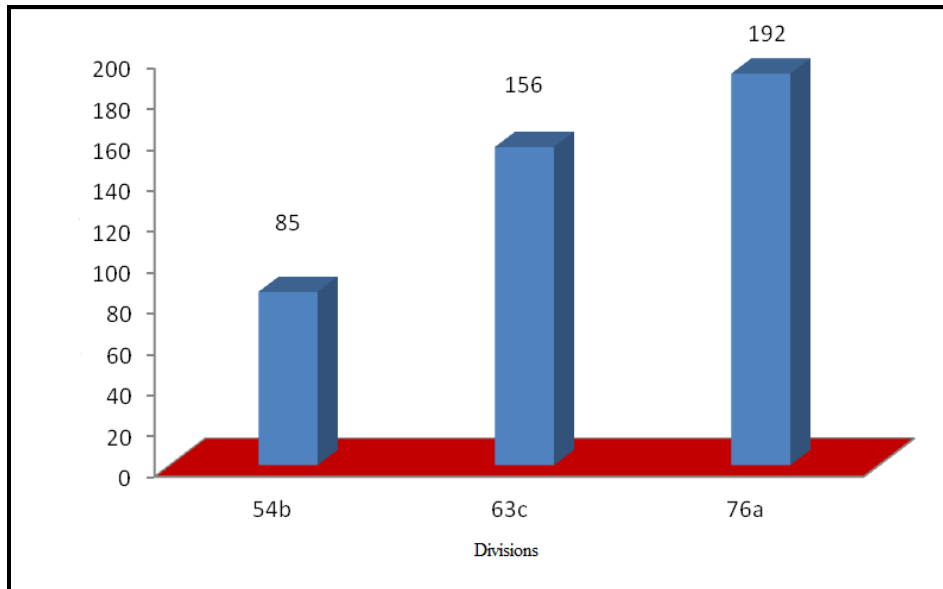


Figure 5. Mean number of young black pines by trabecula

#### 3.2.2 Findings about the Height Growth of Young Black Pines

The most important criterion used in determining the growth of young trees in first years of regeneration studies is the youth height. That's why; height measurements have been carried out on natural young black pines with different heights in 25 m<sup>2</sup> sample sites. The values of height measurements are given in Figure 6.

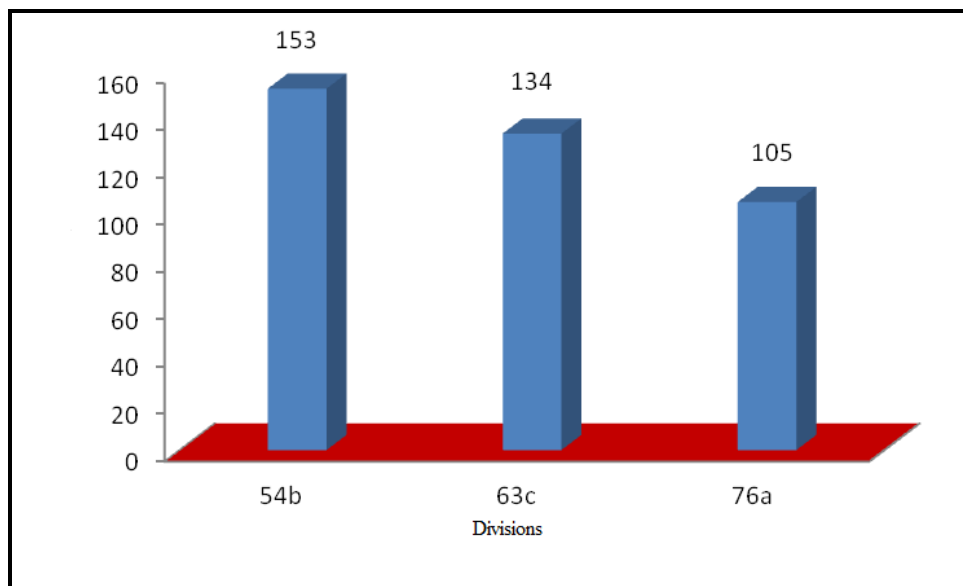


Figure 6. Mean heights of young black pines by trabeculas

### 3.2.3 Findings about the Root Collar Diameters of Young Black Pines

One of the variables used for tracking the growth in first years of young trees in regeneration studies is the root collar diameter growth of youth. That's why; the root collar diameter measurements have been carried out on young black pines in research site, and the results obtained are given in Figure 7.

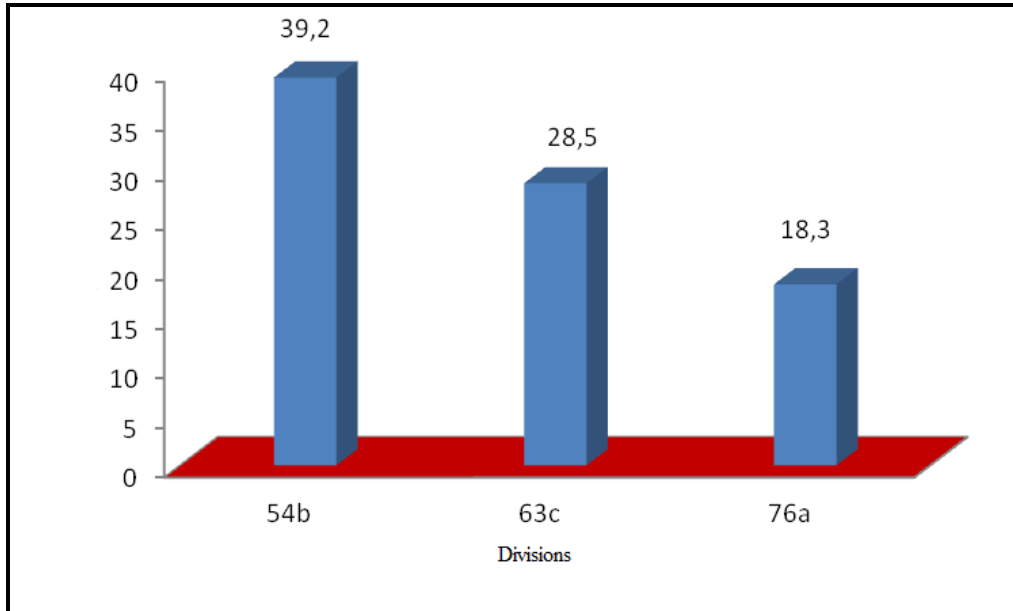


Figure 7. Mean root collar diameters of young black pines by trabeculas

### 3.3 FACTORS AFFECTING THE SUCCESS OF REGENERATION

In order to determine various factors which may be effective in regeneration success of natural black pine regeneration studies, the factor analysis has been utilized. For this purpose, the measurement units and analysis symbols of 19 variables investigated and taken into analyses are given in Table 14.

Table 14. Variables investigated within the scope of research

Nr	Variables	Unit	Symbol in analysis
1	Altitude of experiment sites	m	RAKIM
2	Exposure of experiment sites	---	BAKI
3	Slope of experiment sites	%	EGİM
4	Shoulder status of experiment sites	---	YD
5	Absolute soil depth	cm	MD
6	Physiographic soil depth	cm	FD
7	Rootlet status	---	KOKD
8	Structure type	---	STRT
9	Soil type	---	TOPT
10	Soil reaction in top soil layer (Ah)	---	PH
11	Organic matter content in top soil layer (Ah)	%	ORGM
12	Azote amount in top soil layer (Ah)	%	AZOT
13	Phosphor amount in top soil layer (Ah)	ppm	FSFR
14	Potassium amount in top soil layer (Ah)	ppm	PTSYM
15	Saltiness of top soil layer(Ah)	dS/m	TUZ
16	Precipitation of 2012	mm	YAG12
17	Mean temperature in 2012	°C	SIC12
18	Thickness of litter in 2012	cm	OLUORT12
19	Living cover density in 2012	%	DORT12

As the measure of regeneration success, the number of young black pines per square meter in 2012 has been taken, and the factors affecting it have been investigated.

To explain the mutual relationship of variables mentioned above and affecting the number of young black pines is not enough for determining the combined effect on young black pines. That's why; the factor analysis has been utilized in order to group the variables having high correlation in that complex structure and to reveal variable groups transparently. The Principal Component Analysis model and Kaiser criteria have been taken as base, and 5 common (basic) factors have been derived (Table 15).

Table 15. The explanation of total variance according to factor analysis results

Factors	Initial eigenvalues			Square of Untransformed Factor Loads Before Rotation			Square of Transformed Factor Loads After Rotation		
	Total	Variance (%)	Accumulated Variance (%)	Total	Variance (%)	Accumulated Variance (%)	Total	Variance (%)	Accumulated Variance (%)
1	16.129	32.321	32.321	16.129	32.321	32.321	16.129	23.176	<b>39.40</b>
2	7.782	16.557	55.066	7.782	16.557	55.066	9.127	19.419	<b>41.56</b>
3	5.153	10.964	66.030	5.153	10.964	66.030	4.571	9.725	63.44
4	2.894	6.156	72.187	2.894	6.156	72.187	4.167	8.865	69.73
5	2.355	5.010	77.197	2.355	5.010	77.197	2.356	5.013	<b>72.96</b>
6	2.026	4.310	81.507						
7	1.208	2.570	84.077						
8	1.163	2.475	86.552						
9	1.086	2.310	88.862						
10	0.881	1.874	90.736						
11	0.657	1.398	92.134						
12	0.628	1.337	93.470						
13	0.573	1.220	94.690						
14	0.443	0.942	95.632						
15	0.370	0.788	96.420						
16	0.320	0.682	97.102						
17	0.251	0.534	97.636						
18	0.219	0.465	98.101						
19	0.179	0.380	98.480						
20	0.149	0.318	98.798						
21	0.146	0.310	99.108						
22	0.120	0.256	99.364						
23	8.325E-02	0.177	99.542						
24	6.480E-02	0.138	99.679						
25	4.231E-02	9.001E-02	99.769						
26	3.982E-02	8.472E-02	99.854						
27	2.971E-02	6.321E-02	99.917						
28	2.370E-02	5.042E-02	99.968						
29	8.818E-02	1.876E-02	99.987						
30	6.324E-02	1.346E-02	100.00						
31	1.694E-15	3.604E-15	100.00						
32	7.177E-16	1.527E-15	100.00						
33	4.005E-16	8.521E-16	100.00						
34	3.324E-16	7.072E-16	100.00						
35	3.001E-16	6.385E-16	100.00						
36	2.441E-16	5.194E-16	100.00						
37	1.048E-16	2.229E-16	100.00						
38	7.043E-18	1.498E-17	100.00						
39	-7.625E-17	-1.622E-16	100.00						
40	-1.007E-16	-2.143E-16	100.00						
41	-2.037E-16	-4.335E-16	100.00						
42	-3.172E-16	-6.748E-16	100.00						
43	-3.896E-16	-8.289E-16	100.00						
44	-5.771E-16	-1.228E-15	100.00						
45	-6.922E-16	-1.473E-15	100.00						
46	-8.352E-16	-1.777E-15	100.00						
47	-1.448E-15	-3.081E-15	100.00						

**Extraction Method:** Principal Component Analysis

As seen in Table 15, 5 factors having eigenvalue statistics higher than 1 have been derived. The 1<sup>st</sup> factor explains 39.40% of the variance. 1<sup>st</sup> and 2<sup>nd</sup> factor, together, explain 41.56% of variance. The 5 factors derived explain 72.96% of total variance.

In order to name the factors and smooth the interpretation, the transformed factor matrix has been taken as base (Table 16). In order to make interpretations and naming easier, the factor loads lower than 0.5 are not included in this chart.

Table 16. Transformed Factor Matrix

Variables	Factors				
	1	2	3	4	5
RAKIM	-0.975				
BAKI	0.963				
EGİM	0.958				
YD	-0.943				
MD		0.932			
FD		0.926			
KOKD		0.923			
STRT		0.921			
TOPT		0.917			
PH			0.883		
ORGM			-0.872		
AZOT			0.864		
FSFR			0.851		
PTSYM			0.842		
TUZ			-0.824		
YAG12				0.792	
SIC12				0.781	
OLUORT12					0.754
DORT12					0.743

**Extraction Method:** Principal Component Analysis

**Rotation Method:** Varimax with Kaiser Normalization

As seen in transformed factor matrix; the correlations among 19 variables are represented with total of 5 factors. The variable having the highest correlation has taken the first rank in each of factors. So, the 1<sup>st</sup> factor's first variable is altitude (effective in negative direction), 2<sup>nd</sup> factor's first variable is absolute soil depth, 3<sup>rd</sup> factor's first variable is top soil reaction, 4<sup>th</sup> factor's first variable is mean precipitation of year 2012, and 5<sup>th</sup> factor's first variable is latter thickness.

As seen in chart 3.29; all of the 4 variables in 1<sup>st</sup> factor are related with physiographic conditions. Consequently, 1<sup>st</sup> factor has been named "**PHYSIOGRAPHIC CONDITIONS**". In order to represent this group in multiple regression analysis, **ALTITUDE** having the highest factor load (-0.975) has been chosen.

All of the 5 variables in 2<sup>nd</sup> factor are related with soil conditions. Consequently, 1<sup>st</sup> factor has been named "**PHYSICAL SOIL PROPERTIES**". In multiple regression analysis, **MD** having the highest factor load (0.932) has been chosen as representative of this factor.

In 3<sup>rd</sup> factor, there are 6 variables. All of those variables are related with organic matter content and macro nutrient elements. That's why; this factor is named "**ORGANIC MATTER**". 3<sup>rd</sup> factor has been represented with **ORGM** in regression analyses.

There are 2 variables in 4<sup>th</sup> factor. All of the variables are related with climate conditions of regeneration site. Within this context, 4<sup>th</sup> factor has been named "**CLIMATE**" and in order to represent this group in multiple regression analysis, **YAG12** having the highest factor load (0.792) has been chosen.

The variables in 5<sup>th</sup> factor are related with outer soil condition. That's why; 5<sup>th</sup> factor has been named "**OUTER SOIL CONDITION**" and in order to represent this group in multiple regression analysis, **OLUORT12** having the highest factor load (0.754) has been chosen.

In order to investigate the effects of 9 most important factors (independent variables) determined as a result of factor analyses on the number of young black pines, the multiple regression analysis has been carried out. As dependent variable in performed multiple regression analysis, the number of young black pines per square meter in 2012 (KGS06) has been used. The result of analysis performed via enter method are given in Table 17.

Table 17. Multiple regression analysis results

Independent Variables	Regression Coefficients	Standard Failure	F	R <sup>2</sup>
(Fixed)	0.683	0.617		
RAKIM	-0.815*	0.105	8.536***	0.78
MD	0.00582	0.002		
PH	-0.00367	0.001		
YAG12	0.380*	0.005		
OLUORT12	0.0122	0.006		

**Dependent Variable:** KGS.12

(\*\*): Significance level is P=0.01

(\*\*\*): Significance level is P=0.001

According to the regression analysis results, 78% of the success of regeneration in research site originates in those 5 factors. But the most important ones of those factors are RAKIM and YAG12. The multiple regression model can be written as follows in parallel with obtained results;

$$Y_{(KGS12)} = 0.683 - 0.815X_{(RAKIM)} + 0.00582X_{(MD)} - 0.00367X_{(PH)} + 0.380X_{(YAG12)} + 0.0122X_{(OLUORT12)}$$

But these results obtained are not enough for making an absolute decision about the factors affecting the success of natural regeneration efforts on black pine. In order to obtain more reliable results in this topic, it is required to investigate the data covering much longer time (10-20 years). This analysis can give only a pre-understanding about the determination of the most effective factors on success of natural regeneration efforts.

#### 4. DISCUSSION, RESULT AND SUGGESTIONS

##### 4.1 The Quantitative Properties of Black Pines Juvenilities

Through the height and root neck diameter measurements in 6<sup>th</sup>, 8<sup>th</sup> and 10<sup>th</sup> years, the changes in growth of young black pines in research site have been determined. The mean height increase of young black pines determined at the end of 6<sup>th</sup> year is 105cm. On the other hand, the mean height increase determined at the end of 8<sup>th</sup> year is 134 cm and the value determined at the end of 10<sup>th</sup> year is 153 cm. These results indicate the accuracy of location choice for regeneration sites and that the plants could profit better from organic matter and other nutrient elements (N, P and K) which exist in top soil layer and are important for plant nourishment. Hence, according to the measurement and determinations made in soil profiles, the medium and frequent rootlet densities indicate that young trees profit better from water, organic matter and nutrient elements located especially in top soil layer. In this topic, Karadağ (1999) has revealed in his research on points to pay attention during black pine regeneration efforts in Bolu region that the organic matter content in top soil layer and soil moisture have direct effect on development of young black pines. In a study conducted in Kütahya and Muğla regions in order to determine the factors affecting the success level of natural regeneration studies in black pine forest of those regions, it has been found that the mean height value of young trees varies between 96 and 112 cm (Çelik et al. 2000). Tüfekçioğlu et al. (2002), have found that as biomass increases in black pine, it can profit more from water and nutrient content of soil, and it contributes to development significantly.

The root collar diameter development of young black pines at the end of 10<sup>th</sup> year was 39.2 mm, that determined at the end of 8<sup>th</sup> year was 28.5mm and the mean root collar diameter development at the end of 6<sup>th</sup> year was 18.3mm. As well as in height development, this result in root collar diameter development indicates the adequate profiting from water, organic matter content and other nutrient elements in top soil layer. Different results have been obtained in studies on this topic in our country. According to that, in a study on natural black pine youth in Forest Belgrad, the mean root neck diameter has been determined to be 15.6 mm at the end of 5<sup>th</sup> year (Atahan, 1986). In another study conducted on young black pines in Bolu region, it has been stated that the height and root neck diameter are important criteria for evaluating the adhesion of youth over the region (Karadağ 1999).

##### 4.1.2 The Number of Juvenility

In this study, the number of young black pines per square meter (pcs/m<sup>2</sup>) in regeneration site has been determined. During the countings in experiment sites, the mean number of 6 years-old young trees was 192 pcs/m<sup>2</sup>, that of 8 years-old young trees was 156 pcs/m<sup>2</sup> and the same value of 10 years-old young trees was 85 pcs/m<sup>2</sup>. In studies on this topic in our country, it has been determined that the number of 3 years-old young black pines varies between 182.000 and 225.000 pcs/ha (Karadağ 1999). In another study in Kütahya and Muğla regions, it has been determined that the number of 5 years-old black pines varies between 65.000 and 132.500

pcs/ha (Çelik et al. 2000). Comparing those results with the results of this study, it can be seen that the number of young trees in research site is low. Many factors have effect on this situation. The leading one of those factors is thought to be that it wasn't a productive year in terms of black pine seeds. Another reason of unsuccessfulness in natural regeneration efforts is the lowness of habitat productivity (site quality) of the region where the natural black pine regeneration efforts have been made via LFCM. Because, the regeneration sites are within 3<sup>rd</sup> site quality class in general. One of the important reasons of low number of young black pines in natural black pine regeneration site is that the living cover removal and soil processing implementations performed in 2003, 2005 and 2007 in those sites haven't been applied in appropriate density and in harmony with the right technique. As a result of determinations during 2 years, it has been determined that the thicknesses of latters in natural regeneration sites were excessive. These thickness values of latter layer indicate that the soil processing has not been applied in right density while opening the group sites. Hence, in natural and artificial regeneration efforts, it is known that the maintenances performed in right time and with right technique after youth is brought into region create positive effects on the number and development of young trees (Atay 1978; Ata 1995).

#### **4.2 The Factors Affecting the Success of Regeneration**

As a result of factor analysis applied to 19 variables in order to determine the factors affecting the regeneration success I natural black pine regeneration studies, 5 factors have been obtained.

As a result of analysis, the obtained factors affecting the regeneration success are Physiographic Conditions, Physical Soil Properties, Organic Matter, Climate, and Outer Soil Condition, respectively.

The first factor determined to be effective on regeneration success as a result of factor analysis is physiographic conditions. This factor is represented by variable "Altitude" having the highest factor load. Hence, as altitudes of natural black pine regeneration sites' altitude increased, the number of youth decreased. The altitude is an important physiographic variable affecting the local habitat conditions. Depending on changes in altitude, the micro-climatic and edaphic conditions significantly change (Çepel 1995). Within this context, the implementation of natural regeneration studies in stands at the optimal spreading altitude of black pine increases the success of regeneration (Karadağ 1999; Atalay and Efe 2010)

Second factor affecting the success of natural black pine regeneration efforts is physical soil properties. As absolute and physiologic soil depth and top soil type change from rough textured soils (clay, loam, clayed loam, loamed clay) to more shallow and thinner textured soils (sandy clay, sandy clayed loam), the number of young black pines decreases. Depending on depth and soil type (texture), the plants' capability of profiting from water and nutrient elements in soil through their roots varies. Hence, the thinner textured (sand, sandy clay, sandy clayed loam) soils having better aspiration and higher cation exchange capacity have better water and nutrient element conditions than rough textured soils (clay, clayed loam, loamed clay) (Çepel, 1966, 1996). Within this context, various researchers have stated that the most appropriate soil type for development of black pine is the soils with sandy clay or sandy clayed loam texture having clastic structure (Saatçioğlu 1969; Atalay and Efe 2010).

The third factor affecting the success of natural black pine regeneration efforts in this study is determined as organic matter level. Organic matter content plays important role in development of plants and their adaptation to field conditions. Although the black pine is a half-light tree, the organic matter content and soil moisture have great importance in adhesion of young black pines in first years (Karadağ 1999). The need for organic matter content in soil increases especially in advancing years. The most important reason of that is the seed production. In a study where the first results of origin experiments on Scotch pine in Turkey, it has been determined that the successful origins in terms of seed efficiency are the origins which have profited more from the soil moisture. Within this context, in a comprehensive research study on seed field of Yenice-Bakraz-origin black pine in Bartın region, it has been determined that the soil fertility and maintenance have significant importance on seed productivity of black pine clones (Ertekin 2006).

According to the results obtained from factor analysis implemented in study, the fourth factor affecting the success of natural black pine regeneration efforts is climate factor. The unexpected changes especially in precipitation and temperature parameters may lead to various effects on creation and development of youth. Although black pine is the specie which can penetrate into the anthropogenic step site at most, it is also a forest tree which can be affected negatively from climate changes as well as other tree species. Especially the excessive summer temperatures experiences in our country in summer 2012 and long drought period seen as a result of that have led an important portion of young black pines to move away from the site by drying out. In a study on ecology of black pine and its seed transfer regioning, it is stated that the long durations of drought period affect the black pine negatively even though it is abstinent specie (Atalay and Efe 2010).

The last factor affecting the success of natural black pine regeneration efforts has been determined to be outer soil conditions. The outer soil conditions consist of litter accumulation and living cover density. In experiment sites of natural black pine regeneration area, the adequate amount of young black pines couldn't develop as a result of inadequate contact with mineral soil in parts where the litter accumulation is relatively thicker. Also the dense and strong living cover layer has created negative effects on success of natural regeneration efforts. Especially in parts of stands where there are dense living cover consisting of sword fern and blackberry, the youth has choked and be selected from the site. Similar findings have been found by Karadağ (1999) and Çelik et al. (2000) too.

In this study where the habitat conditions, youth development and regeneration success in natural black pine regeneration efforts within the scope of implemented model forestry plans in Araç region have been investigated, the measurements and determinations have been carried out on the research site consisting of 30 parts and 3 parcels.

As a result of investigations about the habitat conditions, it has been determined that the habitat productivity in regeneration sites is low, and the stands where those sites are located are within 3<sup>rd</sup> site quality class.

Within the context of this study, it has been determined during the investigations about the litter cover thickness and living cover density that the litter cover thickness and living cover density have increased significantly by years and the regeneration sites has started to become wild.

The mean numbers of natural young black pines determined in experiment sites are 192 pcs/m<sup>2</sup> at 6<sup>th</sup> year, 156 pcs/m<sup>2</sup> at 8<sup>th</sup> year and 85 pcs/m<sup>2</sup> at 10<sup>th</sup> year. According to those results, it can be seen that the number of young black pines has significantly decreased in natural regeneration sites.

The mean height growth values of young black pines are 105 cm at 6<sup>th</sup> age, 134 cm at 8<sup>th</sup> age and 153 cm at 10<sup>th</sup> age. The root neck diameter growth values of youth are 18.3 mm at 6<sup>th</sup> age, 28.5 mm at 8<sup>th</sup> age and 39.2 mm at 10<sup>th</sup> age. According to those values, it has been determined that the height and root neck diameter values of young black pines are significantly low.

In order to improve the success of natural regeneration studies on black pine which is one of the important species of our country, following suggestions should be considered;

1. The fertile seed years in regeneration sites should be determined accurately.
2. The regeneration studies should be carried out on optimum spread sites of specie and in normal organization stands.
3. Before seeding in regeneration site, the living cover layer especially consisting of rhododendron should be removed completely by rooting away, and the litter cover layer should be adequately mixed with mineral soil via intensive soil processing.
4. After taking young black pines in research site, until those young trees will obtain their biological independencies, the youth caring measures, especially the struggle with living cover layer, must be taken at right time and in right density.

## ACKNOWLEDGEMENT

This study which has been prepared as post-graduate thesis by İlhan YAZGAN with counseling of Associate Prof. Dr. Halil Barış ÖZEL has been totally funded with the code number of **BAP-2011-2-22** by Bartın University's Research Project Directorate within the scope of post-graduate thesis projects. Herewith, we thank all of the contributors making effort for accomplishment of this study and supporting the post-graduate thesis.

## REFERENCES

- **Agestam, E.** (1995) Natural regeneration of beech in Sweden (Some results from a field trial, Genetics and Silviculture of Beech, *In Proceedings from the 5th Beech Symposium of the IUFRO Project Group* P1.10-00, Denmark, pp.117-125.

- **Akgül, E. ve Aksoy, C.** (1976) Bolu-Şerif Yüksel araştırma ormanının toprak karakterleri ve toprak haritaları, Ormançılık Araştırma Enstitüsü, Teknik Bülten Serisi No: 95, Ankara, 52 s.
- **Aksoy, H.** (1978) *Karabük-Büyükdüz Araştırma Ormanındaki Orman Toplulukları ve Bunların Silvikültürel Özellikleri Üzerine Araştırmalar*, İ.Ü Orman Fakültesi, Doçentlik Tezi, Fakülte Yayın No: 2332/237, İstanbul, 130 s.
- **Anon.** (2010) Araç Orman İşletme Müdürlüğü, Araç Orman İşletme Şefliği Model Amenajman Planı, Ankara, 236 s.
- **Anon.** (2011) Araç Orman İşletme Müdürlüğü, Araç Orman İşletme Şefliği Detay Silvikültür Planı, Bartın, 55 s.
- **Anon.** (2006) Orman Varlığımız, Çevre ve Orman Bakanlığı, Orman Genel Müdürlüğü, OGM Matbaası, Ankara, 152 s.
- **Anşin, R. ve Özkan, Z.C.** (1993) *Tohumlu Bitkiler (Spermatophyta)*, K.T.Ü Orman Fakültesi, Genel Yayın No: 167, Fakülte Yayın No: 19, Trabzon, s.320-325.
- **Ata, C.** (1975) Kazdağı Göknaarı (*Abies equi-trojani* Aschers et Sinten)'nın Türkiye'deki Yayılışı ve Silvikültürel Özellikleri, İ.Ü Orman Fakültesi, Silvikültür Kürsüsü, Doktora Tezi (yayımlanmamış), İstanbul, 155 s.
- **Ata, C.** (1981) Doğal ve Yapay Gençleştirimin Koşulları, *K.T.Ü Orman Fakültesi Dergisi*, Cilt: 4, Sayı: 1, Trabzon, s.80-97
- **Ata, C.** (1995) *Silvikültür Tekniği*, Z.K.Ü Bartın Orman Fakültesi, Üniversite Yayın No: 4, Fakülte Yayın No: 3, Bartın, 453 s.
- **Atalay, İ. ve Efe, R.** (2010) Anadolu Karaçamı (*Pinus nigra* Arnold. subsp. *pallasiana* (Lamb.) Holmboe)'nın Ekolojisi ve Tohum Nakli Açısından Bölgelere Ayrılması Orman Bakanlığı, Orman Ağaçları ve Tohumları İslah Araştırma Müdürlüğü, Yayın No: 4-424/37, Ankara, 272 s.
- **Atay, İ.** (1971) Tabii Gençleştirimin Başarılı ve Başarısız Oluşuna Etki Yapan En Önemli Faktörler Üzerine Açıklamalar, *İ.Ü Orman Fakültesi Dergisi*, B Serisi, Cilt: 2, Sayı: 3, İstanbul, s. 7-20.
- **Atay, İ.** (1987) *Doğal Gençleştirme Yöntemleri I-II*, İ.Ü Fen Bilimleri Enstitüsü, İ.Ü Yayın No: 3461, F.B.E Yayın No: 1, İstanbul, 290 s.
- **Atay, İ., Odabaşı, T., Aksoy, H. ve Ata, C.** (1989) Karışık ormanlarda doğal gençleştirimin planlanması esasları, *Ormançılık Araştırma Enstitüsü Dergisi*, No: 169, Ankara, s.7-26.
- **Avşar, M.D.** (1999) Kahramanmaraş-Başkonuş Dağı Ormanlarında Başlıca Meşcere Kuruluşları ve Silvikültürel Öneriler, K.T.Ü. Fen Bilimleri Enstitüsü, Orman Mühendisliği Anabilim Dalı, Silvikültür Programı, Doktora Tezi (yayımlanmamış), Trabzon, 211 s.
- **Ayhan, A.Ş.** (2002) Kızılçamın (*Pinus brutia* Ten.) Doğal Yolla Gençleştirilmesi, *Orman Mühendisliği Dergisi*, Sayı: 3-4, Ankara, s. 5-8.
- **Baker, F.S.** (1934) *Principles of silviculture*, McGraw-Hill Book Company, New York, 413 p.
- **Barnes, B.V., Zak, D.R., Denton, S.R. and Spurr, S.H.** (1998) *Forest Ecology*. John Wiley and Sons, Inc. 774 p.
- **Batu, F.** (1995) *Uygulamalı İstatistik Yöntemler*, K.T.Ü Orman Fakültesi, Genel Yayın No: 179, Fakülte Yayın No: 22, Trabzon, 312 s.
- **Beck, W.** (2000) Silviculture and Stand Dynamics of Scots Pine in Germany, Invest. Agr. Sist. Recur. For. Serie No: 1, Germany, pp. 199-212.
- **Brady, N.C.** (1990) *The Nature and Properties of Soils*, Macmillan Publishing company, 10th Edition, New York, 620 p.
- **Boydak, M.** (1993) Kızılçamın silvikültürel özellikleri, uygulanabilecek gençleştirme yöntemleri ve uygulama esasları. *Uluslararası Kızılçam Sempozyumu Bildirileri*, Orman Bakanlığı Yayını, Ankara, s.146-158.
- **Boydak, M.** (2003a) Problems and Recommendations Related to Plantations of Fast Growing Tree Species in Turkey. In *Proceedings of Establishment of Industrial Plantation in Turkey, International Workshop*, TEMA and Ministry of Environment and Forestry, Poplar and Fast Growing Forest Tree Research Institute, İzmit, pp. 4-14.
- **Boydak, M.** (2003b) Regeneration of Lebanon Cedar (*Cedrus libani* A. Rich.) on Karstic Lands in Turkey. *Forest Ecology and Management*, Vol: 178, pp. 231-243.
- **Bozkuş, H.F.** (1987) Toros göknaarı (*Abies cilicica* Carr)'nın Türkiye'deki doğal yayılışı ve Silvikültürel Özellikleri, Orman Genel Müdürlüğü, Yayın No: 660, Seri No: 60, Ankara, 166 s.
- **Cairns, E.** (2001) How could continuous cover forestry work in New Zealand? *N. Z. Tree Grower* 22, New Zealand, pp. 42-43.
- **Çalışkan, A.** (1991) Karabük-Büyükdüz Araştırma Ormanının Sarıçam (*Pinus sylvestris* L.)-Göknaar (*Abies bornmülleriana* Mattf.)-Kayın (*Fagus orientalis* Lipsky) Karışık Meşcerelerinde Büyüme

- İlişkileri ve Gerekli Silvikültürel İşlemler, İ.Ü. Fen Bilimleri Enstitüsü, Orman Mühendisliği Anabilim Dalı, Silvikültür Programı, Doktora Tezi (yayımlanmamış), İstanbul, 283 s.
- **Çalışkan, A., Özalp, G. ve Karadağ, M.** (2004) Karabük-Büyükdüz Araştırma Ormanında Karaçam+Meşe+Göknar+Kayın Karışık Meşcerelerinde Meşenin Gençleştirilmesi, Çevre ve Orman Bakanlığı, Batı Karadeniz Ormancılık Araştırma Enstitüsü Müdürlüğü, Teknik Bülten No: 10, Bolu, 59 s.
  - **Çanakçıoğlu, H.** (1995) *Orman Entomolojisi (Genel Bölüm)*, Üniversite Yayın No: 2, Fakülte Yayın No: 2, Bartın, 385 s.
  - **Çelik, O., Umut, B., Kaymakçı, E., DüNDAR, M., Ayhan, Ş.** (2000). Karaçam (*Pinus nigra* Arnold. ssp. *pallasiana* (Lamb.) Holmboe) Doğal Gençleştirilmesi Üzerine Araştırmalar, İç Anadolu Ormancılık Araştırma Enstitüsü Teknik Bülten No:280, Ankara, 90 s.
  - **Çepel, N.** (1966) *Orman Yetiştirme Muhiti Tanıtımının Pratik Esasları ve Orman Yetiştirme Muhiti Haritalığı*, Kutulmuş Matbaası, İstanbul, 187 s.
  - **Çepel, N., DüNDAR, M. ve Günel, A.** (1977) Türkiye'nin Önemli Yetiştirme Bölgelerinde Saf Sarıçam Ormanlarının Gelişimi İle Bazı Edafik ve Fizyografik Etkenler Arasındaki İlişkiler, Türkiye Bilimsel ve Teknik Araştırma Kurumu (TÜBİTAK), Tarım ve Ormancılık Araştırma Grubu, Ankara, 165 s.
  - **Çepel, N.** (1982) Doğal Gençleştiriminin Ekolojik Koşulları, *İ.Ü Orman Fakültesi Dergisi*, B Serisi, Cilt: 32, Sayı: 2, İstanbul, s. 6-27.
  - **Çepel, N.** (1995) *Orman Ekolojisi*, İ.Ü Orman Fakültesi, 4. Baskı, İstanbul, 536 s.
  - **Çepel, N.** (1996) *Toprak İlimi*, İ.Ü. Orman Fakültesi, Üniversite Yayın No: 3945, O.F. Yayın No: 438, İstanbul, 288 s.
  - **Çepel, N.** (2003) *Ekolojik Sorunlar ve Çözümleri*, Türkiye Bilimsel ve Teknik Araştırma Kurumu (TÜBİTAK), Popüler Bilim Kitapları, Aydoğdu Matbaası, Ankara, 183 s.
  - **Çiçek, E.** (2002) Adapazarı-Süleymaniye Subasar Ormanında Meşcere Kuruluşları ve Gerekli Silvikültürel Önlemler, İ.Ü Fen Bilimleri Enstitüsü, Orman Mühendisliği Anabilim Dalı, Silvikültür Programı, Doktora Tezi (yayımlanmamış), İstanbul, 137s.
  - **Çolak, A.H. ve Pitterle, A.** (1999) *Yüksek Dağ Silvikültürü (Genel Prensipler)*, Orman Genel Müdürlüğü Personelini Güçlendirme Vakfı (OGEM-VAK), Ankara, 369 s.
  - **Çolak, A.H.** (2001) *Ormanda Doğa Koruma* (Kavramlar, Prensipler, Stratejiler, Önlemler), Orman Bakanlığı, Milli Parklar ve Av-Yaban Hayatı Genel Müdürlüğü, Ankara, 354 s.
  - **Çolak, A.H., Rotherham, I.D. and Çalikoğlu, M.** (2003) Combining "Naturalness Concepts" with close-to-nature silviculture, *Forstw. Cbl.* 122, Germany, pp. 421-431.
  - **Çolak, A.H. ve Odabaşı, T.** (2004) *Silvikültürel Planlama*, İ.Ü Fen Bilimleri Enstitüsü Yayınları, Rektörlük Yayın No: 4514, F.B.E Yayın No: 14, İstanbul, 326 s.
  - **Daşdemir, İ.** (1987) Türkiye'deki Doğu Ladini (*Picea orientalis* L. Carr) Ormanlarında Yetiştirme Ortamı Faktörleri-Verimlilik İlişkisi, İ.Ü. Fen Bilimleri Enstitüsü, Orman Mühendisliği Anabilim Dalı, Orman Ekonomisi Programı, Yüksek Lisans Tezi (yayımlanmamış), İstanbul, 122 s.
  - **Daşdemir, İ.** (1995) Orman İşletmelerinin Başarı Düzeylerinin Belirlenmesi (Kuzeydoğu Anadolu ve Doğu Karadeniz Bölgesi Örneği), Orman Bakanlığı, Doğu Anadolu Ormancılık Araştırma Müdürlüğü, Teknik Bülten Yayın No: 1, Erzurum, 162 s.
  - **Demirci, A.** (1991) Doğu Ladini (*Picea orientalis* (L.) Link.)-Doğu Kayını (*Fagus orientalis* Lipsky.) Karışık Meşcerelerinin Gençleştirilmesi, K.T.Ü Fen Bilimleri Enstitüsü, Orman Mühendisliği Anabilim Dalı, Silvikültür Programı, Doktora Tezi (yayımlanmamış), Trabzon, 223 s.
  - **Durkaya, A.** (1996) Şimşirdere Orman İşletme Şefliğine Ait Normal Amenajman Planı İle Türk-Alman Ormancılık Projesi Çerçevesinde Düzenlenen Model Amenajman Planının Kıyaslanması, Z.K.Ü Fen Bilimleri Enstitüsü, Orman Mühendisliği Enstitü Anabilim Dalı, Yüksek Mühendislik Tezi (yayımlanmamış), Bartın, 144 s.
  - **DüNDAR, M.** (1973) Ankara Civarındaki Bazı Karaçam ve Sarıçam Kültürlerinde Görülen Kurumalarla İğne Yapraklardaki Besin Maddeleri Konsantrasyon Seviyeleri Arasındaki İlişkiler, Ormancılık Araştırma Enstitüsü, Teknik Bülten Serisi No: 53, Ankara, 101 s.
  - **DüNDAR, M., Çelik, O., Umut, B. ve Ayhan, Ş.** (2002) Batı Karadeniz Kayın (*Fagus orientalis* Lipsky.) Meşcerelerinin Gençleştirilmesinde Sürgünden Gelen Gençliklerden Yararlanma İmkanlarının Araştırılması, İç Anadolu Ormancılık Araştırma Enstitüsü, Teknik Bülten No: 278, Ankara, 37 s.
  - **Efendioğlu, M.** (1999) Türk-Alman ormancılık projesi çerçevesinde düzenlenen amenajman planları ve ülkemizde uygulama olanakları, *Orman Mühendisliği Dergisi*, Sayı: 4, Ankara, s. 27-32.
  - **Eler, Ü., Genek, A. ve Yıldırım, K.** (1989) Karaçam (*Pinus nigra* Arnold.) Gençliklerinde Erken Boşaltma ve Seyreltmenin Fidan Büyümesi Üzerine Etkileri, Ormancılık Araştırma Enstitüsü, Teknik Raporlar Serisi, No: 36-39, Ankara, 20 s.

- **Eler, Ü.** (1990) Antalya Yöresinde Doğal Sedir (*Cedrus libani* A. Rich.) Meşcerelerinde Gecikmiş Aralama Kesimlerinin Gelişme Üzerine Etkileri, Ormancılık Araştırma Enstitüsü, Teknik Raporlar Serisi No: 44, Ankara, 24 s.
- **Elliott, K.J. and Knoepp, J.D.** (2005) The effects of three regeneration methods on plant diversity and soil characteristics in the southern Appalachians, *Forest Ecology and Management*, Vol: 211, pp. 296-317.
- **Emborg, J.** (1999) Research in forest reserves in Denmark, In Proceedings Research in Forest Reserves and Natural Forests in European Countries, European Forest Institute, Finland, pp 72-83.
- **Eraslan, İ., Yüksel, Ş. ve Giray, N.** (1984) *Batı Karadeniz Bölgesindeki Değişikyaşlı Koru Ormanlarının Optimal Kuruluşları Hakkında Araştırmalar*, Tarım Orman ve Köy İşleri Bakanlığı, Orman Genel Müdürlüğü, Sıra No: 650, Seri No: 58, Ankara, 161 s.
- **Eraslan, İ ve Şad, H.C.** (1993) *Orman Amenajmanı*, İ.Ü Orman Fakültesi, İ.Ü Yayın No: 3742, O.F. Yayın No: 123, İstanbul, 420 s.
- **Ercan, M.** (1997) *Bilimsel Araştırmalarda İstatistik*, Orman Bakanlığı, Kavak ve Hızlı Gelişen Tür Orman Ağaçları Araştırma Müdürlüğü, İzmit, 225 s.
- **Ertekin, M.** (2006) Yenice-Bakraz Orijinli Karaçam (*Pinus nigra* Arnold. subsp. *pallasiana* (Lamb.) Holmboe) Tohum Bahçesinde Çiçeklenme, Kozalak Verimi ve Tohum Özellikleri Açısından Klonal Farklılıklar, Z.K.Ü Fen Bilimleri Enstitüsü, Orman Mühendisliği Anabilim Dalı, Silvikültür Programı Doktora Tezi (yayımlanmamış), Bartın, 191 s.
- **Eruz, E.** (1980) *Belgrad Ormanı'ndaki Meşe ve Kayın Ekosistemlerinin Bazı Önemli Kimyasal ve Fiziksel Toprak Özelliklerine İlişkin Araştırmalar*, İ.Ü Orman Fakültesi, İ.Ü Yayın No: 2641, Orman Fakültesi Yayın No: 280, İstanbul, 239 s.
- **Eyüboğlu, A.K., Atasoy, H. ve Küçük, M.** (1995) Saf Doğu Ladini (*Picea orientalis* (L.) Link) Meşcerelerinin Doğal Yolla Gençleştirilmesi Üzerine Çalışmalar, Ormancılık Araştırma Enstitüsü, Teknik Bülten No: 248, Ankara, 40 s.
- **Falcone, P.** (1999) Research in forest reserves in France, In Proceedings Research in Forest Reserves and Natural Forests in European Countries, European Forest Institute, Finland, pp 98-109.
- **FAO** (2001) State of The World's Forests, Rome, 169 pp.
- **FAO** (2005) State of The World's Forests, Rome, 305 pp.
- **Finkeldey, R. and Ziehe, M.** (2004) Genetic implications of silvicultural regimes, *Forest Ecology and Management*, Vol: 197, pp. 231-244.
- **Gadow, K.** (2001) Orientation and control in CCF systems, In Proceedings of the *International IUFRO Conference on Continuous Cover Forestry*, Assessment, Analyses, Scenerios, University of Göttingen, Germany, pp. 211-217.
- **Gadow, K., Nagel, J. and Saborowski, J.** (2002) Continuous cover forestry, Assesment, Analysis, Scenarios, Dordrecht, pp. 46-48.
- **Gamborg, C. and Larsen, J. B.** (2003) "Back to nature" a sustainable future for forestry? *Forest Ecology and Management*, Vol: 179, pp. 559-571.
- **Gärtner, S. and Reif, A.** (2005) The response of ground vegetation to structural change during forest conversion in the southern Black Forest, *European Journal of Forest Research*, Vol: 124, pp. 221-231.
- **Genç, M.** (2004) *Silvikültür Tekniği*, S.D.Ü Orman Fakültesi, Yayın No: 46, Isparta, 357s.
- **Genç, M.** (2006) *Silvikültürel Uygulamalar*, S.D.Ü Orman Fakültesi, Yayın No: 68, Isparta, 357 s.
- **Güner, S.** (2000) Artvin-Genya Dağı'ndaki Orman Toplulukları ve Silvikültürel Özellikleri, K.T.Ü Fen Bilimleri Enstitüsü, Orman Mühendisliği Anabilim Dalı, Silvikültür Programı, Doktora Tezi (yayımlanmamış), 126 s.
- **Häusler, A., Scherer, L. and Lorenzen, M.** (2001) Sustainable forest management in Germany: the ecosystem approach of the biodiversity convention reconsidered, Germany, 65 p.
- **Hüttl, R.F. and Schneider, B.U.** (1998) Forest Ecosystem Degradation and Rehabilitation, *Ecological Engineering*, Vol: 10, Germany, pp.19-31.
- **Irmak, A.** (1972) *Toprak İlimi*, İ.Ü. Orman Fakültesi, Üniversite Yayın No: 1268, O.F. Yayın No: 121, İstanbul, 299 s.
- **İlter, E. ve Ok, K.** (2004) *Ormancılık ve Orman Endüstrisinde Pazarlama İlkeleri ve Yönetimi*, Form Ofset Matbaacılık, Ankara, 488 s.
- **Kacar, B.** (1996) *Toprak Analizleri*, A.Ü Ziraat Fakültesi, Araştırma ve Geliştirme Vakfı Yayınları, No: 3, Ankara, 705 s.

- **Kalipsız, A.** (1976) *Bilimsel Araştırma*, İ.Ü.Orman Fakültesi, İ.Ü. Yayın No: 2076 O.F. Yayın No: 216, İstanbul, 187 s.
- **Kalipsız, A.** (1988) *Orman Hasılat Bilgisi*, İ.Ü Orman Fakültesi, İ.Ü Yayın No: 3516, O.F. Yayın No: 397, İstanbul, 347 s.
- **Kalipsız, A.** (1993) *Dendrometri*, İ.Ü. Orman Fakültesi, Üniversite Yayın No: 3793, Fakülte Yayın no: 426, İstanbul, 91 s.
- **Kalipsız, A.** (1994) *İstatistik Yöntemler*, İ.Ü. Orman Fakültesi, Üniversite Yayın No: 3835, Fakülte Yayın No: 427, İstanbul, 558 s.
- **Kantarci, M.D.** (2000) *Toprak İlimi*, İ.Ü Orman Fakültesi, Üniversite Yayın No: 4261, O.F. Yayın No: 462, İstanbul, 420 s.
- **Kapucu, F.** (1978) Doğu Karadeniz bölgesindeki Doğu ladini (*Picea orientalis* L. Carr), sarıçam (*Pinus silvestris* L.), Doğu karadeniz göknarı (*Abies nordmanniana* Spach) ve Doğu kayını (*Fagus orientalis* Lipsky) doğal karışık meşcerelerinin kuruluşları-amenajman yönünden değerlendirilmesi üzerine araştırmalar, K:T.Ü. orman Fakültesi, Orman amenajmanı bilim Dalı, Doçentlik Tezi (yayımlanmamış), Trabzon, 170 s.
- **Karadağ, M.** (1999) Batı Karadeniz Bölgesinde Karaçam (*Pinus nigra* Arnold. subsp. *pallasiana* (Lamb.) Holmboe) Doğal Gençleştirme Koşulları Üzerine Araştırmalar, Orman Bakanlığı, Batı Karadeniz Ormancılık Araştırma Enstitüsü Müdürlüğü, Teknik Bülten No: 4, Bolu, 226 s.
- **Kassioumis, K., Chatziphilippidis, G. Trakolis, D. and Vergos, S.** (1999) Research in forest reserves in Greece, In Proceedings Research in Forest Reserves and Natural Forests in European Countries, European Forest Institute, Finland, pp 118-133.
- **Kaymakçı, E., Erkuloğlu Ö.S. ve Eronat, A.F.** (2002) Ege Bölgesinde Çeşitli Nedenlerle Bozulmuş Yüksek Zon Karaçam (*Pinus nigra* Arnold.) Ormanlarının Gençleştirilmesi Üzerine Araştırmalar, Orman Bakanlığı, Ege Ormancılık Araştırma Müdürlüğü, Teknik Bülten No: 18, İzmir, 22 s.
- **Kelty, M.J., Larson, B.C. and Oliver, C.D.** (1992) *The Ecology and Silviculture of Mixed-Species Forests*, Kluwer Academic Publishers, Netherlands, 287 p.
- **Kozłowski, T.T.** (2002) Physiological ecology of natural regeneration of harvested and disturbed forest stands: implications for forest management, *Forest Ecology and Management*, Vol: 158, pp. 195-221.
- **Larsson, T. B., Ranneby, B. and Sjöberg, K.** (1999) Research in forest reserves in Sweden, In Proceedings Research in Forest Reserves and Natural Forests in European Countries, European Forest Institute, Finland, pp 244-253.
- **Linder, P., Elfving, B. and Zackrisson, O.** (1997) Stand structure and successional trends in virgin boreal forest reserves in Sweden, *Forest Ecology and Management*, Vol: 98, pp.17-33.
- **Ling, K.A. and Ashmore, M.R.** (1999) Influence of tree health on ground flora in the Children Beechwoods, *Forest Ecology and Management*, Vol: 119, pp. 77-88.
- **Long, J. N., Dean, T.J. and Roberts, S. D.** (2004) Linkages between silviculture and ecology: examination of several important conceptual models, *Forest Ecology and Management*, Vol: 200, pp. 249-261.
- **Madsen, P. and Larsen, J.B.** (1997) Natural regeneration of beech (*Fagus sylvatica* L.) with respect to canopy density, soil moisture, and soil carbon content, *Forest Ecology and Management*, Vol: 97, pp. 95-105.
- **Mason, W.L., Kerr, G. and Simpson, J.M.S.** (1999) What is CCF?, Forestry Commission Information Note: 29, *Forestry Commission*, Edinburg, 4 p.
- **Mayer, H. ve Aksoy, H.** (1998) *Türkiye Ormanları*, Orman Bakanlığı, Batı Karadeniz Ormancılık araştırma Enstitüsü Müdürlüğü, Muhtelif Yayın no:1, Bolu, 291 s.
- **McEvoy, T.J** (2000) *Introduction to Forest Ecology and Silviculture*, Natural Resource, Agriculture and Engineering Service (NRAES) Cooperative Extension, New York, 88 p.
- **Merev, N.** (2003) *Odun Anatomisi*, K.T.Ü Orman Fakültesi, Genel Yayın No: 209, Fakülte Yayın No: 31, Trabzon, 246 s.
- **Mielikäinen, K. and Hynynen, J.** (2003) Silvicultural management in maintaining biodiversity and resistance of forests in Europe-boreal zone: case Finland, *Journal of Environmental Management* Vol: 67, Germany, pp. 47-54.
- **Mountford, E.P.** (2001) Natural canopy gap characteristics in European beech forests, Nature-Based Management of Beech in Europe Project (NAT-MAN), Working Report 6, France, 29 p.
- **Mountford, E.P. and Groome, G.** (2003) Changes in ground vegetation at Noar Hill Hanger beechwood, Nature-Based Management of Beech in Europe Project (NAT-MAN), Working Report 20, England, 12 p.

- **Mountford, E.P.** (2003) Long-term changes in the vegetation of Denny Wood, an ancient wood pasture in the new forest, Nature-Based Management of Beech in Europe Project (NAT-MAN), Working Report 20, England, 31 p.
- **Mountford, E.P., Savill, P.S. and Bebbler, D.P.** (2006) Patterns of regeneration and ground vegetation associated with canopy gaps in a managed beechwood in southern England, *Forestry*, Vol: 79 (4), pp. 389-408.
- **Nyland, R.D.** (2002) *Silviculture (Concepts and Applications)*, The McGraw-Hill Company, New York, 682 p.
- **Odabaşı, T. ve Özalp, G.** (1998) *Doğaya Uygun Ormancılık Anlayışı*, Orman Bakanlığı, Orman Genel Müdürlüğü, Silvikültür Daire Başkanlığı, Ankara, 28 s.
- **Odabaşı, T.** (1976) *Türkiye’de baltalık ve korulu baltalık ormanları ve bunların koruya dönüştürülmesi olanakları üzerine araştırmalar*, İ.Ü. Orman Fakültesi, İ.Ü. Yayın No: 2079, O.F. Yayın no: 218, İstanbul, 192 s.
- **Odabaşı, T. ve Özalp, G.** (1994) Ormanların İşletilmesi Yöntemleri ve Doğaya Uygun Ormancılık Anlayışı, *İ.Ü Orman Fakültesi Dergisi*, Seri: B, Cilt: 44, Sayı: 1-2, İstanbul, pp.35-47.
- **Odabaşı, T., Bozkuş, H.F. ve Çalışkan, A.** (2004) *Silvikültür Tekniği*, İ.Ü Orman Fakültesi, İ.Ü Yayın No: 4459, O.F Yayın No: 475, İstanbul, 314 s.
- **Oliver, C.D. and Larson, B.C.** (1996) *Forest Stand Dynamics*, Update edition, John Wiley & Sons, New York, 520 p.
- **O’Sullivan, A.** (1999) Research in forest reserves in Ireland, In Proceedings Research in Forest Reserves and Natural Forests in European Countries, European Forest Institute, Finland, pp 144-163.
- **Özalp, G.** (1989) Çitdere (Yenice-Zonguldak) Bölgesindeki Orman Toplulukları ve Silvikültürel Değerlendirilmesi, İ.Ü Fen Bilimleri Enstitüsü, Orman Mühendisliği Anabilim Dalı, Doktora Tezi (yayımlanmamış), İstanbul.
- **Özdamar, K.** (2004) *Paket Programlar İle İstatistiksel Veri Analizi*, Genişletilmiş 5. Baskı, Kaan Kitabevi, Eskişehir, s.517-520.
- **Özel H.B** (2007) Bartın ve Devrek Yörelere Doğu Kayını (*Fagus orientalis* Lipsky.) Ormanlarında Meşcere Kuruluşları ve Gençleştirme Başarısını Etkileyen Faktörler, ZKÜ Fen Bilimleri Enstitüsü, Doktora (yayımlanmamış) Tezi, Bartın, 272 s.
- **Özdemir, T.** (1993). Kızılçamın Doğal Gençleştirilmesi, Uluslararası Kızılçam Sempozyumu Bildirisi, Orman Bakanlığı Yayını, Ankara, s. 159-166.
- **Özer, N.** (1989) Türk-Alman Ormancılık Projesinin Hedefleri, *Yapraklı Ormanlarda Modern Silvikültür Tekniklerinin Uygulanması Semineri*, Orman Genel Müdürlüğü ve Türk-Alman Ormancılık Projesi, Zonguldak, s. 1-4.
- **Özyuvacı, N.** (1999) *Meteoroloji ve Klimatoloji*, İ.Ü Orman Fakültesi, Rektörlük Yayın No: 4196, Fakülte Yayın No: 460, İstanbul, 369 s.
- **Pamay, B.** (1962) *Türkiye’de Sarıçam (Pinus silvestris L.) Tabii Gençleşmesi İmkanları Üzerine Araştırmalar*, Tarım Bakanlığı, Orman Genel Müdürlüğü, Sıra No: 337, Seri No: 31, İstanbul, 196 s.
- **Pamay, B.** (1967) Demirköy-İğneada Longos Ormanlarının Silvikültürel Analizi ve Verimli Hale Getirilmesi İçin Alınması Gereken Silvikültürel Tedbirler Üzerine Araştırmalar, Orman Genel Müdürlüğü Yayınları, Sıra No: 451, Seri No: 43, 82 s.
- **Pariona, W., Fredericksen, T.S. and Licon, J.C.** (2003) Natural regeneration and liberation of timber species in logging gaps in two Bolivian tropical forests, *Forest Ecology and Management*, Vol: 181, pp. 313-322.
- **Parviainen, J.** (1999) European close to nature silviculture – effort to enhance biodiversity, The Finnish Forest Research Institute, Finland, 17 p.
- **Parviainen, J., Päivinen, R., Uutera, J. And Varmola, M.** (1999) Research in forest reserves in Finland, In Proceedings Research in Forest Reserves and Natural Forests in European Countries, European Forest Institute, Finland, pp 83-99.
- **Piussi, P. and Farrell, E.P.** (2000) Interactions between society and forest ecosystems: challenges for the near future, *Forest Ecology and Management*, Vol: 132, pp. 21-28.
- **Piussi, P.** (2001) Nature Oriented Silviculture in the South-Eastern Alps, Selvinat Socrates Schema Nuovo 28.7-01. Dipartimento di Scienze e Tecniche Ambientali Forestali, Università degli Studi Firenze., Italy 2 p.
- **Podlaski, R.** (2002) Relationship between crown characteristics and the radial increment of beech (*Fagus sylvatica* L.) the Swietokrzyski National Park (Poland), *Journal of Forest Science* (48), pp. 93-99.

- **Pommerening, A. and Murphy, S.T.** (2004) A review of the history, definitions and methods of continuous cover forestry with special attention to afforestation and restocking, *Forestry*, Vol: 77, No: 1, pp. 27-44.
- **Rojo, J.M.T and Orois, S.S.** (2005) A decision support system for optimizing the conversion of rotation forest stands to continuous cover forest stands, *Forest Ecology and Management*, Vol: 207, pp. 109-120.
- **Rosset, C. and Schütz, J. P.** (2003) A DSS as a tool for implementation and monitoring of multiple purpose, near the nature silviculture, *Decision Support for Multiple Purpose Forestry*, Austria, pp. 2-11.
- **Saatçioğlu, F.** (1954) *Bahçeköy ve Ayancık Ormanlarında Yapılan Silvikültür Tatbikatları, Ekskürsiyon Mevzuları*, Ziraat Vekaleti, Orman Umum Müdürlüğü, Yayın No: 140, Seri No: 23, İstanbul, 118 s.
- **Saatçioğlu, F.** (1969) *Silvikültürün Biyolojik Esasları ve Prensipleri*, İ.Ü Orman Fakültesi, İ.Ü Yayın No: 1429, O.F Yayın No: 138, İstanbul, 323 s.
- **Saatçioğlu, F.** (1971a) *Orman Ağacı Tohumları*, İ.Ü Orman Fakültesi, İ.Ü Yayın No: 1649, O.F Yayın No: 173, 3. Baskı, İstanbul, 226 s.
- **Saatçioğlu, F.** (1971b) *Orman Bakımı*, İ.Ü Orman Fakültesi, İ.Ü Yayın No: 1636, O.F Yayın No: 160, İstanbul, 118 s.
- **Saatçioğlu, F.** (1979) *Silvikültür II (Silvikültürün Tekniği)*, İ.Ü Orman Fakültesi, İ.Ü Yayın No: 1648, O.F Yayın No: 172, İstanbul, 562 s.
- **Saraçoğlu, Ö.** (1988) *Karadeniz Yöresi Gökmar Meşcerelerinde Artım ve Büyüme*, İ.Ü. Orman Fakültesi, Orman Hasılatı ve biyometri bilim dalı, İstanbul, 312 s.
- **Saraçoğlu, N.** (1999) *Orman Hasılat Bilgisi (Ders Notu)*, Z.K.Ü Bartın Orman Fakültesi, Üniversite Yayın No: 5, Fakülte Yayın No: 4, Bartın, 152 s.
- **Sarıyıldız, T.** (2002) Ölü örtünün ayrışmasının önemi ve ölü örtü ayrışmasında ölü örtü bileşenlerinin etkisi konusunda yapılan çalışmalara genel bir bakış, *II. Ulusal Karadeniz Ormanlık Kongresi Bildiriler Kitabı*, Artvin, s. 807-819.
- **Sarıyıldız, T. ve Küçük, M.** (2005) Kayın (*Fagus orientalis* Lipsky.) Yapraklarının ve Ladin (*Picea orientalis* L.) İbrelinin Ayrışma Oranları Üzerinde Orman Gülünün (*Rhododendron ponticum* L.) Etkisi, Gazi Üniversitesi, *Orman Fakültesi Dergisi*, Cilt: 5, No: 1, Kastamonu, s.55-70.
- **Scheffer, F. and Schachtschabel, P.** (2001) *Toprak Bilimi* (Çevirenler: H. Özbek, Z. Kaya, M. Gök, H. Kaptan), Ç.Ü Ziraat Fakültesi, Genel Yayın No: 73, Ders Kitapları Yayın No: A-16, Adana, 816 s.
- **Schnitzler, A. and Borlea, F.** (1998) Lessons from natural forest as keys for sustainable management and improvement of naturalness in managed broadleaved forests, *Forest Ecology and Management*, Vol: 109, pp. 293-303.
- **Schütz, J.P** (1999) Close-to Nature Silviculture: Is This Concept Compatible with Species Diversity, *Forestry* Vol: 72, No: 4, pp.359-366.
- **Schütz, J. P.** (2002) Silvicultural Tools to Develop Irregular and Diverse Forest Structure, *Forestry* Vol: 75, No: 4, pp.329-337.
- **Sezgin, M. ve Avcı, H.B.** (1990) Batı Karadeniz Bölgesindeki Yapraklı Ormanlarda Uygulanan Aralama Çalışmalarının Sorunları İle Öngörülecek Tedbirler, *Bakım ve Aralama Çalışmalarında Silvikültürel ve Ekonomik Görüşler, Yapraklı Ormanlarda Modern Bakım ve Aralama Teknikleri Semineri*, Orman Genel Müdürlüğü ve Türk-Alman Ormanlık Projesi, Kdz. Ereğli, s. 14-53.
- **Sevimsoy, M.** (1984) Göle-Sarıkamış yöresinde saf sarıçam (*Pinus silvestris* L.) ormanlarında doğal gençleştirme yöntemlerinin saptanması, Ormanlık araştırma enstitüsü, Teknik bülten serisi No: 121, Ankara, 48 s.
- **Sivacioğlu, A.** (1996) Sarıçam (*Pinus silvestris* L.), Karaçam (*Pinus nigra* Arnold. subsp. *pallasiana* (Lamb.) Holmboe), Uludağ Gökmarı (*Abies bornmülleriana* Mattf.), Doğu Kayını (*Fagus orientalis* Lipsky.) ve Meşe (*Quercus sp.*) Türlerinin Işık İhtiyacı, Z.K.Ü Fen Bilimleri Enstitüsü, Orman Mühendisliği Anabilim Dalı, Silvikültür Programı, Yüksek Lisans Tezi (yayımlanmamış), Bartın, 60 s.
- **Sivacioğlu, A.** (2002) Sarıçam (*Pinus sylvestris* L.)-gökmar (*Abies bornmülleriana* Mattf.) karışık meşcerelerinde gençleştirme sorunları, *II. Ulusal Karadeniz Ormanlık Kongresi Bildiriler Kitabı*, Artvin, s. 446-455.
- **Smith, D. M., Larson, B. C., Kelty, M. J. and Ashton, P. M. S.** (1997) *The practice of silviculture: Applied Forest Ecology*, 9th edition John Wiley & Sons, New York, 537p.
- **Tegelmark, D.O.** (1998) Site factors as multivariate predictors of the success of natural regeneration in Scots pine forests, *Forest Ecology and Management*, Vol: 109, pp. 231-239.
- **Tosun, S., Özpaya, Z., Serin, M. ve Karatepe, H.** (2002) Doğu Kayını (*Fagus orientalis* Lipsky.) ve Meşe (*Quercus petraea* (Matt.) Lieb., *Quercus hartwissiana* Stev.) Türlerinde Boylu Fidan Üretimi ve Plantasyon Tekniğinin Araştırılması, Orman Bakanlığı, Batı Karadeniz Ormanlık Araştırma Enstitüsü Müdürlüğü, Teknik Bülten No: 6, Bolu, 53 s.

- **Tulukçu, M., Tunçtaner, K., Toplu, F. ve Akçidem, E.** (1992) Geniş Yapraklı Orman Ağacı Türlerinin Marmara Bölgesine Uyumluluğu Üzerine Araştırmalar, Orman Bakanlığı, Kavak ve Hızlı Gelişen Yabancı Tür Orman Ağaçları Araştırma Enstitüsü, Teknik Bülten No: 157, İzmit, 34 s.
- **Tunçtaner, K.** (2007) *Orman Genetiği ve Ağaç Islahı*, Zonguldak Karaelmas Üniversitesi, Bartın Orman Fakültesi (yayımlanmamış ders kitabı), Bartın, 364 s.
- **Tunçtaner, K. and Özel, H.B.** (2007) Oriental beech (*Fagus orientalis* Lipsky.) natural regeneration practices in Turkey (Case study at Bartın-Yenihan forest district) (unpublished), University of ZKÜ, Faculty of Forestry, Bartın.
- **Turkheim, B.** (1993) The Techniques and Economic Basis of Close-to Nature Silviculture, European Union of Foresters Advocating Close-to Nature Management (PRO SILVA), *First European Congress Proceedings*, France, pp. 63-82.
- **Tüfekçioğlu, A., Güner, S., Altun, L. ve Kalay, Z.** (2002) Kayın ve ladin meşcerelerinde ince ve kılcal kök biyokütlelerinin karşılaştırılması, *II. Ulusal Karadeniz Ormancılık Kongresi Bildiriler Kitabı*, Artvin, s. 712-717.
- **Türüdü, Ö.A.** (1997) *Bitki Beslenmesi ve Gübreleme Tekniği*, K.T.Ü Meslek Yüksek Okulları, Genel Yayın No: 171, M.Y.O Yayın No: 13, Trabzon, 257 s.
- **Uğurlu, S. ve Çevik, İ.** (1990) Bingöl Yöresi Bozuk Meşe Baltalıklarının Verimliliştirilmesi Çalışmalarında Başarıyı Etkileyen Yetiştirme Yeri Faktörleri, Ormancılık Araştırma Enstitüsü, Teknik Bülten No: 211, Ankara, 76 s.
- **Umut, B., DüNDAR, M., Çelik, O. ve Yılmaz, A.** (1996) Bursa-Orhaneli işletmesi kızılçam (*Pinus brutia* Ten.) doğal gençleştirme alanlarındaki başarısızlık nedenlerinin tespiti, Ormancılık Araştırma Enstitüsü Müdürlüğü, Teknik Bülten No: 253, Ankara, 32 s.
- **Umut, B., DüNDAR, M. ve Çelik, O.** (2000) Sıklık Çağındaki Kayın (*Fagus orientalis* Lipsky.) Meşcerelerinin Bakımı Üzerine Araştırmalar, İç Anadolu Ormancılık Araştırma Enstitüsü, Teknik Bülten No: 274, Ankara, 23 s.
- **Üçler, A.Ö., Demirci, A., Ölmez, Z. ve Güner, S.** (2001) Artvin-Kafkasör Yöresindeki Bir Doğu Ladini (*Picea orientalis* L. Mirt.)-Doğu Karadeniz Göknarı (*Abies nordmanniana* Spach.) Karışık Meşceresinde Doğal Gençleştiriminin İncelenmesi, Kafkas Üniversitesi, *Artvin Orman Fakültesi Dergisi*, Sayı: 1, Artvin, s. 2-14.
- **Ürgenç, S.** (1998) *Ağaçlandırma Tekniği*, İ.Ü Orman Fakültesi, İ.Ü Rektörlük Yayın No: 3994, Orman Fakültesi Yayın No: 441, Emek Matbaacılık, İstanbul, 600 s.
- **Yaltırık, F.** (1993) *Dendroloji II (Angiospermae)*, İ.Ü Orman Fakültesi, İ.Ü Yayın No: 3767, O.F. Yayın No: 420, İstanbul, s.109-113.



## LIPOPHILIC CONSTITUENTS OF SOME CONIFEROUS CONES

Ayben KILIÇ<sup>1\*</sup>, Harzemsah HAFIZOĞLU<sup>1</sup>, İlhami Emrah DONMEZ<sup>2</sup>, İbrahim TÜMEN<sup>1</sup>, Hüseyin SİVRİKAYA<sup>1</sup>, Jarl HEMMING<sup>3</sup>, Markku REUNEN<sup>3</sup>

<sup>1</sup> Faculty of Forestry, Bartın University, Bartın, Turkey.

<sup>2</sup> Faculty of Forestry, Süleyman Demirel University, Isparta, Turkey.

<sup>3</sup> Laboratory of Wood and Paper Chemistry, Åbo Akademi University, Turku, Finland.

\*Corresponding author

Bartın University, Faculty of Forestry, 74100, Bartın, Turkey

E-mail: ayben67@yahoo.com; Fax: 03782235062, Tel: 03782235089

### ABSTRACT

The lipophilic constituents of cones, a renewable natural resource, from *Picea orientalis*, *Cedrus libani* L. and four different *Abies* species namely *A. equi-trojani*, *A. cilicica*, *A. nordmanniana* and *A. bornmülleriana*, were determined after n-hexane extraction. The amount of lipophilics, identified by GC and GC-MS from the cones of *A. cilicica* (154.6 mg g<sup>-1</sup>) and *A. bornmülleriana* (131.8 mg g<sup>-1</sup>) was significantly different from others. The lowest value was obtained from the cones of *P. orientalis* (25.14 mg g<sup>-1</sup>). Abietic, neoabietic, sandaracopimaric and hydroxylated resin acids constituted the major compounds in the cones. Free fatty acids, resin aldehydes, resin hydrocarbons and sterols were the other chemical groups found in the composition.

**Key words:** *Abies*, *Cedrus libani* L, cone, lipophilics, *Picea orientalis*.

### INTRODUCTION

Cone is the part protecting the seeds in the coniferous species till seeds are matured. The size and the shape of cone are changing from species to species. *Cedrus libani* L. (Lebanon cedar), the native species to south central Turkey, has 8-10 cm long and 4-6 cm wide cone with barrel shape. It matured in 24 months and the surface is resinous. More stable and smaller cone is belonging to *Picea orientalis* (oriental spruce) with 5-9 cm long and 1.5 cm broad size. It has smooth, stiff and dark brown rounded scales. Even after the maturation, scales are not disintegrated and keep attaching to axis. There is four different *Abies* species growing natively in Turkey; *A. equi-trojani* (Kazdağı fir), *A. cilicica* (Toros fir), *A. nordmanniana* (Silver fir) and *A. bornmülleriana* (Uludağ fir). Fir has the biggest cone in between coniferous species. It is between 15-20 cm long and 4-6 cm wide. Matured fir cone is brown and has 150-200 scales, each scale with two winged seeds. Like cedar, the surface of fir cones is resinous (Ansin and Ozkan 1993; Yaltırık 1993). Each year great amounts of cones are produced during conifer regeneration. Nonetheless this renewable natural product did find a limited industrial usage. The cones of *Pinus pinea* L. was tested in the production of medium density fiberboard with urea-formaldehyde and was proposed as an alternative biological formaldehyde catcher (Ayrilmis et al. 2009). Mainly the bioactivity of pine cone extracts and also its chemical composition are studied (Eberhard et al.1994; Eberhard et al.1996; Villagomez et al.2005; Barrero et al. 2005; Unaldi and Toroglu 2009. Kilic et al.2011).

Lipophilics, the non-polar compounds, are forming 1-3 % of wood extractives and can be in higher contents in tropical trees and some other parts of tree (e.g. in knots, heartwood). It composed mainly resin acids, some other diterpenoids, fats and steryl esters. The function of resin acids and other diterpenoids is to protect a tree against insect and fungal attacks. Fats and steryl esters are the energy sources and cell membrane components (Sunderberg and Holmbom 2005).

In the last decade there has been a big interest in the use of natural products not only in pharmacy but also in food industry. From this aspect could cones be a suitable natural source? The first step of the answer is to know the chemical composition of this natural resource. In the present paper, the chemical composition of lipophilic

\*Yazışma yapılacak yazar: ayben\_kilic@hotmail.com

compounds from cones of *A. cilicica*, *A. bornmülleriana*, *A. nordmanniana*, *A. equi-trojani*, *C. libani* and *P. orientalis* which up to our knowledge has not been addressed before were studied.

## MATERIAL AND METHODS

### Plant material and Reagents

The study was carried out using the cones of *P. orientalis*, *C. libani* and four different *Abies* species (*A. equi-trojani*, *A. cilicica*, *A. nordmanniana*, *A. bornmülleriana*). Sampling data are listed in Table 1. For each species 5 kg of cones were collected from the trees just at the time of maturity and stored at -24 °C until analysis. After disintegrating into small pieces, the cones were freeze-dried and ground in a Wiley mill down to the size of 1 mm. n-Hexane, and pyridine were obtained in analytical grade purity from Merck (Turku, Finland). *N-O*-Bis(trimethylsilyltrifluoro-acetamide) (BSTFA), heneicosaic acid, heptadecanoic acid and trimethylchlorosilane (TMCS) were purchased from Fluka (Turku, Finland). Betulinol was obtained from a private paper factory in Finland.

Table 1. Species and sampling locations

Species	Sampling location (Turkey)
<i>Abies bornmülleriana</i>	Bartın
<i>Abies cilicica</i>	Adana
<i>Abies equi-trojani</i>	Edremit
<i>Abies nordmanniana</i>	Trabzon
<i>Picea orientalis</i>	Trabzon
<i>Cedrus libani</i>	Adana

### Extraction

About 5 g of grounded cone samples were extracted with n-hexane in an accelerated solvent extractor (ASE; Dionex Inc. ASE 200) apparatus (solvent temperature 90°C, pressure 13.8 MPa, 3x5 min. static cycles). 2 ml of internal standard (heneicosanic acid, heptadecanoic acid and betulinol) was added to aliquots of extracts and the mixtures were evaporated under nitrogen. 150 µl of pyridine:BSTFA:TMCS (1:5:1) mixture was added to the extracts and silylated at 70°C for 35 min. Silylated samples were injected to GC and GC-MS for the determination of lipophilic constituent.

### Chromatographic Conditions

Chromatographic analyses were performed with a PelkinElmer AutosystemXL gas chromatograph equipped with a long column of HP-1 (J&W) 25 m x 0.2 mm (0.11 µm film thickness); column and a flame ionization detector with H<sub>2</sub> as the carrier gas (0.8 ml min<sup>-1</sup>). The temperature program was initiated at 120 °C min<sup>-1</sup> with a ramp of 6 °C min<sup>-1</sup> up to 320 °C, injector temperature was 260 °C and FID temperature 320 °C. 1 µl sample was injected (split ratio: 1 : 24). For Sterlyesters and triglycerides a short column (HP-1 (J&W) 5 m x 0.53 mm, 0.15 µm film thickness) was used with the temperature program of 80 °C (0.1 min), 110 °C (15 °C min<sup>-1</sup>), 340 °C (7 min). The identification of the individual compounds was performed by HP 6890-5973 gas chromatograph/mass spectrometry instrument equipped also with an HP-1 capillary column. The temperature program was set to be the same as in the long column. Identification was based on both the mass spectra and the comparison of the samples to compounds present in the spectral library.

## RESULTS

Silylated lipophilic extracts from oriental spruce, Lebanon cedar and four different fir species were analyzed by GC and GC-MS using short and long capillary columns. The composition of lipophilic extractives is presented in Table 2. The limit of quantification was 1/100 and precision of determination  $\pm 5\%$ . The most predominant lipophilic compounds present in the cones were resin acids, followed by resin alcohols, resin aldehydes, fatty acids and sterols. Also, lower amounts of sterylesters and triglycerides were determined with short column.

As mentioned before, resin acids are obtained mainly from coniferous species. The results of cone extractives in this study reveal this one more time. In the fir species 75 %, in Lebanon cedar 51 % and in spruce 23 % of total identified compounds was resin acids. The most abundant resin acid in all cones was the abietic acid (50.2-2.72 mg g<sup>-1</sup>). Neoabietic acid was found to be more than 23 mg g<sup>-1</sup> both in *A. cilicica* and *A. bornmülleriana* taking the place as the second important acid. However, in the cones of the other two fir species (*A. nordmanniana* and *A. equi-trojani*) and in the oriental spruce cone, hydroxylated resin acids, a group formed by crystalline resins, was the second dominant acid. The amount of this group was found to be very low in Lebanon cedar (0.18 mg g<sup>-1</sup>). Sandaracopimaric, levopimaric and palustric acids were other detectable acids found in the cones. Isopimaric acid (1.80 mg g<sup>-1</sup>) and cupressic acid (0.10 mg g<sup>-1</sup>) was determined only in the Lebanon cedar. Abietol, the alcohol form of abietic acid, and abietal, the aldehyde form, were also important compounds in the lipophilic structure of cones especially in *A. cilicica* and *A. bornmülleriana*. Resin hydrocarbons e.g. abieta-8,11,13-triene and palustradiene, were detected abundantly in Lebanon cedar cones, while it was in trace amounts or even not detected in other species. Campesterol and sitosterol were the two sterols found in cones and campesterol was determined only in the cones of fir species.

The last group found in cones was free fatty acids and triglycerides. Generally, the structure of free fatty acids determined in the cones of fir species were the same despite various amounts. Triglycerides was determined by using a short column. A clear difference can be seen between fir species, Lebanon cedar and oriental spruce cones regarding to the total amount of triglycerides. The total amount of free fatty acids was found to be larger than the amount of triglycerides in fir cones. On the contrary, in oriental spruce and Lebanon cedar cones the amount of triglycerides was found to be higher (14.8 mg g<sup>-1</sup> and 11.6 mg g<sup>-1</sup>).

Table 2 Lipophilic constituents of cones (mg g<sup>-1</sup> in dry weight).

	<i>A. equi-tro.</i>	<i>A. cilicica</i>	<i>A. nordman.</i>	<i>A. bornmuller.</i>	<i>P. orientalis</i>	<i>C. libani</i>
<b>Fatty acids</b>						
16:0 +(Abieta-7,13-diene)*	0.32	2.09	0.33	0.98	0.24	2.34*
17:0	0.35	0.94	0.33	0.64	-	-
18:3	-	-	-	-	0.38	-
18:2	0.14	1.08	0.02	0.06	0.12	-
18:2 conj.	0.48	0.62	0.31	0.08	1.05	-
9-18:1	0.48	1.34	0.09	0.53	0.41	-
11-18:1	0.21	0.47	0.21	0.46	-	-
18:0	0.1	0.1	0.09	0.22	0.03	-
24:0	0.08	0.23	0.13	0.13	-	-
26:0	0.1	0.19	0.14	0.14	-	-
28:0	0.15	0.43	0.24	0.27	-	-
<b>Resin aldehydes</b>						
Palustral	-	-	-	-	-	0.25
Levopimaral	-	tr	-	0.84	-	-
Dehydroabietal	0.11	1.06	0.1	0.37	-	-
Abietal	0.96	8.49	0.99	5.17	0.49	0.44
Neoabietal	0.06	0.11	0.05	0.08	-	0.09
<b>Resin hydrocarbons</b>						
Abieta-7,13-diene	0.04	tr	tr	0.13	-	*
Abieta-8,11,13-triene	-	-	-	-	-	0.47
Palustradiene	-	-	-	-	-	0.54
Neoabietadiene	-	-	-	-	-	0.62
<b>Resin alcohols</b>						
Dehydroabietol	0.27	1.53	0.18	0.98	0.21	0.21
Abietol	1.29	12.5	1.43	8.15	0.83	-
Neoabietol	0.35	3.37	0.24	2.01	-	0.33
<b>Resin acids</b>						
Sandaracopimaric acid	2.21	2.51	0.52	2.42	0.45	5.83
Isopimaric acid	-	-	-	-	-	1.80
Palustric acid	0.13	6.69	0.18	1.20	-	0.54
Levopimaric acid	0.71	6.50	0.35	8.67	-	0.33
Dehydroabietic acid	2.46	9.23	1.71	7.76	-	-
Abietic acid	7.95	50.2	8.38	42.3	2.72	5.22
Neoabietic acid	3.73	23.5	5.0	24.6	0.18	4.12
Isomeric dehydroabietic acid	0.78	1.67	0.66	2.05	0.11	0.16
Hydroxylated resin acids	6.06	12.6	5.81	16.7	2.37	0.18
Abietatetraenoic acid	0.56	2.03	0.53	1.69	0.03	-
Secodehydroabietic acid	0.06	0.21	0.07	0.11	-	-
Cupressic acid	-	-	-	-	-	0.10
<b>Sterols</b>						
Campesterol	0.20	0.35	0.25	0.34	-	-
Sitosterol	0.81	1.81	0.91	1.08	0.20	0.25
<b>Sterlyesters</b>						
	0.22	0.91	0.34	0.49	0.52	0.62
<b>Triglycerides</b>						
	1.38	1.84	0.62	1.17	14.8	11.6
<b>Total identified amount</b>	<b>32.7</b>	<b>154.6</b>	<b>30.2</b>	<b>131.8</b>	<b>25.1</b>	<b>36.0</b>

- : Not detected; tr: trace amount; \*:overlapped;

## DISCUSSION

The knowledge of the chemical composition of lipophilic components of cones will assist for the utilization of this natural product. In general terms, remarkable differences were detected among the cones of fir species. While, *A. cilicica* (154.6 mg g<sup>-1</sup>) and *A.nordmanniana* (131.8 mg g<sup>-1</sup>) have the highest amount of lipophilic compounds the two other fir species (*A.bornmülleriana* (32.7 mg g<sup>-1</sup>), *A.equi-trojani* 30.2 (mg g<sup>-1</sup>)) had similar results with Lebanon cedar (36 mg g<sup>-1</sup>) and oriental spruce (25.1 mg g<sup>-1</sup>) cones.

Abietane type resin acids was the dominant group in all cones within different amounts. Hafizoglu and Reunanen (1994) found similar results for the cone resin of *A. nordmanniana* and oriental spruce. In that study, abietic acid was determined approximately 20 % and neoabietic acid 10 % . Nevertheless, in the wood part of *A. nordmanniana* both of these acids were found to be in trace amounts while in oriental spruce dehydroabietic, palustric and levopimaric acids were dominant (Ucar 2005). In Lebanon cedar cone sandaracopimaric acid, a pimarane type, was found to in high amounts ( 5.83 mg g<sup>-1</sup>) with abietic acid (5.22 mg g<sup>-1</sup>). Similar data was obtained in the oleoresin of the cedrus cone (Hafizoglu and Holmbom, 1987). In the wood part, beside these two compounds isopimaric acid also indicated as an important acid in Lebanon cedar (Hafizoglu 1987).

Resin acids, has antimicrobial and antifungal activities. Micales *et al.*, (1994) indicated that while abietane-type compounds (levopimaric, dehydroabietic, abietic and neoabietic acids) inhibited the mycelia growth in various fungi, the pimaric, isopimaric and sandracopimaric acids of the pimarane-type resin acids displayed only limited activity. In another study (Smith *et al.*2005) the diterpene isopimaric acid from the extract of immature pine cone was assayed against multidrug resistant (MDR) and methicillin-resistant *Staphylococcus aureus* (MRSA). Kopper *et al.* (2005) also reported abietic and isopimaric acids as inhibitors for *Ophiostoma ips*, a conifer pathogenic fungus. A linear correlation between bioactivity against Gram-positive bacteria and lipophilicity degree was determined by San Feliciano *et al.* (1993). In the same study a reverse situation was observed for Gram-negative bacteria. Compared to common diterpen acids 7-oxo-dehydroabietic acid and 7-hydroxy-dehydroabietic acid, were found to be more active against inhibition of fungal growth (Savluchinke Feio *et al.*2006). From this point of view, extracts from the mature fresh cones especially from some fir species could be considered as a renewable resource for biological activities.

## Acknowledgements

Special thanks to Prof. Bjarne Holmbom for his scientific supports, Laboratory of Wood and Paper Chemistry, Åbo Akademi, Turku, Finland. This work is a part of a project supported by Scientific and Technical Research Council of Turkey (TÜBİTAK).

## REFERENCES

- Ansin R, Ozkan C (1993) Tohumlu Bitkiler, Odunsu Taksonlar. Blacksea Technical University, Forestry Faculty, Yayın no:167/19, Trabzon.
- Ayırlımis N, Buyuksari U, Avci Koc E (2009) Ultilkization of pine (*Pinus pinea* L.) cone in manufacture of wood based composite. Forest Ecology and Management, 259: 65-70.
- Barrero A F, Quilez del Moral J, Herrador M Mar, Arteaga JF, Akssira M, Benharref A, Dakir M (2005) Abietane diterpenes from the cones of *Cedrus atlantica*. Phytochemistry 66: 105-111.
- Eberhard TL, Han J, Micales JA, Young RA (1994) Decay Resistance in conifer seed cones: Role of Resin acids as inhibitors of decomposition. *Holzforschung* 48: 278-284.
- Eberhard T L, Young RA (1996) Characterization of conifer seed cone polysaccharides and lignin. *Holzforschung* 50: 401-407.
- Hafizoglu H (1987) Studies on the chemistry of *Cedrus* A.Rich. I.Wood extractives of *Cedrus libani*. *Holzforschung* 41:27-38.
- Hafizoglu H, Holmbom B (1987) Studies on the chemistry of *Cedrus* A.Rich. III.Oleoresin composition of Cones and Bark From *Cedrus Libani*. *Holzforschung* 41:141-145.

- Hafızoglu H, Reunanen M (1994) Composition of oleoresins from bark and cones of *Abies nordmanniana* and *Picea orientalis*. *Holzforschung* 48:7-11.
- Kilic A, Hafızoglu H, Dönmez IH, Tümen I, Sivrikaya H, Reunanen M, Hemming J (2011) Extractives in the cones of *Pinus* species. *Eur J Wood Prod* 69:37-40.
- Kusumoto N, Ashitani T, Hayasaka Y, Murayama T, Ogiyama K, Takahashi K (2009) Antitermic activities of abietane-type diterpenes from *Taxodium distichum* cones. *J Chem Ecol* 35: 635-642.
- Micales J A, Han J S, Davis J L, Young R A (1994) Chemical composition and fungitoxic activities of pine cone extractives. In: *Biodeterioration Research*, (Ed. GC Llewellyn, W.V.Dashek, C.E. O'Rear), Plenum Press.
- San Feliciano A, Gordaliza M, Salinero M, Del Corral DJ (1993) Abietane acids: sources, biological activities and therapeutic uses. *Planta Med* 5: 485-490.
- Smith E, Williamson E, Zloh M, Gibbons S (2005) Isopimaric acid from *Pinus nigra* shows activity against Multidrug-resistant and EMRSA strains of *Staphylococcus aureus*. *Phototherapy Research* 19: 538-542.
- Savluchinke Feio S, Curto MJM, Gigante B, Roseiro JC (2006) Antimicrobial activity of resin acid derivatives. *Appl Microbiol Biotechnol* 72: 430-436.
- Sundberg A, Holmbom B (2005) *Wood and Fiber Chemistry*. Åbo Akademi, Laboratory of Wood and Paper Chemistry.pp:37-38.
- Ucar MB (2005) A comparative study on the chemical composition of the oriental spruce woods *Picea orientalis* from planted and natural forests. *Chemistry of Natural Compounds*. 41: 5.
- Unaldi UE, Toroglu S (2009) Studies on antimicrobial activity of pyramidal black pine: An endemic plant close to become extinct. *J Environ Biol* 30(2): 197-204.
- Villagomez HZ, Peterson DM, Herrin L, Young RA (2005) Antioxidant activity of different components of pine species. *Holzforschung* 59(2): 156-162.
- Yaltirik F (1993) *Dendroloji Ders Kitabı I.Gymnospermae*, 2nd ed. Istanbul University, Forestry Faculty, Yayın no: 3443/386.